

# 기록물을 통해 본 광복 전후 이영춘과 농촌위생연구소

## A Study on Lee Young-choon and the Institute for Rural Health Before and After Liberation Through Records

Kim, Dong-Yeol

### Abstract

This study examined the operation and facility changes of the Institute for Rural Health, which was established to provide medical and health care in rural areas of Jeollabuk-do from 1935 to the 1960s, and its founder, Dr. Lee Young-chun, based on records. The research institute, established for the purpose of providing medical care and hygiene to farmers in Jeollabuk-do, began in 1935 when Lee Young-chun opened a clinic as a farm doctor. The time when a separate corporation was established as a research institute to seriously promote medical care and hygiene was 1942, as can be seen from records from that time. However, the above plan was not realized at the time for various reasons, and after liberation, due to insufficient financial support, it was launched as the Institute for Rural Health in 1948. The Institute for Rural Health, established in 1948, continuously expanded its facilities to achieve its founding purpose. These facilities can be divided into the Ungbon Farm, the US military government (Shinhan Corporation), the Ministry of Agriculture, Food and Rural Affairs, and the Ministry of Health and Social Affairs, depending on the entity that subsidized the operating expenses of the institute. However, the Institute for Rural Health was excluded from the operation of the Seagrave Hospital, which was established with the Korea-America Foundation in the 1970s, due to debt borrowed to supplement operating expenses after 1956, and thereafter lost its actual medical and sanitation activities.

Keywords : Institute for Rural Health, Rural Health, Lee Young-choon, Historical consideration

1. 가 , 가 1899 가 1935 가 20,000 , 1945 1980 1) ( , 2023) ( , 2014), ( , 2003, 2009) 가 , 가 1935 가 가 1970 가

\* (Corresponding author : Wanju National Research Institute of Cultural Heritage, nuch01@korea.kr)

1) 1980 11

2), , 3)

가 가

Table 1. List of Research on the Institute for Rural Health

(2023)		
(2014)		
(2009)	1940-60	
(2003)		
(1994)		

Table 2. List of research materials

( )		
1.		(1938)
2.		,
3.	(1942)	
4.	(1943)	
5.		(1969)
6.	(1939)	
7.	1947	(1946)
8.		(1948)
9.	( )	
10.		(1969)
11.	(1969)	
12.	(1969)	
13.		(1970)
14.	(1967)	
15.		(BA0046214)
16.		(BA0131174)
17.	가	(BA0230456)
18.		(BA0230456)
19.	가	(BA020456)
20.	가	(BA0064217)
21.	( )	
22.		

2.

1935  
가

2) , , 2004  
3) 가

, 1930 가  
(公醫)

20,000 가

Table 3. Newspaper articles related to Dr. Lee Young-chun

	( )
1933.3.14.	春) (醫院長) (李永春氏) (永

Sources : <https://newslibrary.naver.com>

1935

1 1 4  
6,574 1939  
가 가 1

Table 4. Schedule of medical treatment by farm(1930s)

10	3, 4, 7, 9, 13, 14, 17, 19, 27, 29
9	1, 2, 6, 11, 12, 16, 21, 22, 26
5	5, 10, 15, 20, 25
3	8, 18, 28
1	30 31

Sources : , , 1993, p.362

Table 5. Clinic staff and patient status(1935-1945)

1935	1	1	1	2	6,574
1936	1	1	1	2	9,278
1937	1	1	3	4	10,102
1938	1	1	3	4	10,489
1939	3	3	6	9	13,071
1940	3	3	8	11	17,111
1941	3	2	8	10	26,049
1942	3	3	13	16	28,286
1943	3	3	13	16	33,972
1944	3	3	16	19	35,060
1945	3	3	16	19	26,425

Sources : (1936, 가 , )

(1943) 「 (1953) 」

Table 6. Schedule of medical treatment by farm(1930s)

	( )
-	: 1 / :1 / :1 :1 / :5
-	: 1 / :1 / :1 :1 / :4
-	: 9,899 , :10,109 , :2,857 , :32,865
1939	1940 , (西) 3 ( ) ( 8 ) ( )

\*Sources : (1943, )

Table 7. Clinic Patient List(1943)

	20	36	-	-	7	43	27	79
	2,271	3,096	3,074	4,787	3,844	3,911	9189	11,794
	204	810	58	105	279	970	541	1,885
	132	307	81	400	581	1339	794	2,046
	27	47	33	61	182	339	242	447
	258	785	142	409	342	733	742	1,927
	172	365	94	405	-	-	266	770
	119	386	39	75	-	-	158	461
	-	-	-	-	-	-	-	-
	393	471	176	170	56	231	625	872
	423	1,258	185	571	468	1,352	1,076	3,181
	3,173	5,045	3,512	5,841	4,823	6,214	11,508	17,100
	9,899	10,109	12,857	32,865				

\* =新, =崔旧, =內( ), =鮮( )

\*Sources : (1943, )

1943 ,  
( ), ( ), ( ) 3 ,  
2 , 1 , 1 , (他給仕) 1 ,  
5 10 , 1 , 1 ,  
1 , 1 , 4 8  
가 가 가  
, 9,899 , 10,109 ,  
12,857  
가 가

Table 7

1941 , 3  
1940  
340 ,

Table 8. List of buildings related to medical and preventive activities

1935.4.	- (一遇) 4 ( , (日割) 가
1935.8.	-
1935.10.	-
1938.6.	- 4 (巨)
1939.3.	- 3
1939.10.	-
1939.11.	- , , , ( , , ), ( , , )
1939.11.	- ( )
1939.11.	-
1940.2.	- 340 (3 )
1940.5.	- 9 6 1 (免療) (TAC) ( )
1941.6.	- ( )
1941.12.	- ( 20 , )
1942.6.	- (前 ) (謝意) (來到)
1942.8.	- ( 20 , )
1942.10.	- 40
1945.3.	- 1,500 가 (所謂) 가
1945.8.	-

Sources : (1953, 가 )



Fig. 1. Clinic staff and school hygiene(Sources : Table 2. 22 )

3.

1946  
1948  
1942  
「  
(1942)」가

Table 9. Research Institute Establishment Plan(1942)

-	가
-	( )
-	( , ( ))
-	( , , , )
-	2 , ( ), ( , )
-	1 , 1 , , ,
-	( ), ( ), ( )
-	:
-	: , ,
-	: 20
-	: 4 ( 1 , 1 )
-	: , ,
-	: 150
-	: 1
-	: 1
-	, / - (充實),
-	/ -
-	/ -

\*Sources :  
(1942, )  
가  
( , ),

( 2 ,  
) , 2 ( 1 , 1 ) , ,  
20  
1945 3  
1,500  
가  
(不急) (戰後)  
8.15 4)  
가 100%  
1948 「  
「1947  
」가

Table 10. Research Institute Establishment Plan(1946)

-	가
-	가
-	가 가 ( )
-	가 ( )
-	가 ( )
-	가 가 ( )
-	가 가 ( )
-	가 ( )
-	/ /
-	/
-	( , 2 (115 ))
-	( , 1 (120 ))
-	( , 2 (127 , 23.5 ))
-	( , , , ( ))

\*Sources : 1947 (1946,  
)

4) , , 2004, pp.41-42



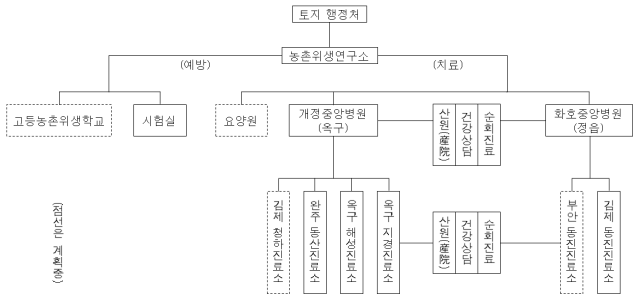


Fig. 2. Organization of the Institute for Rural Health(1948)

(Sources : , , 2023, p.107 2)

4.

1960

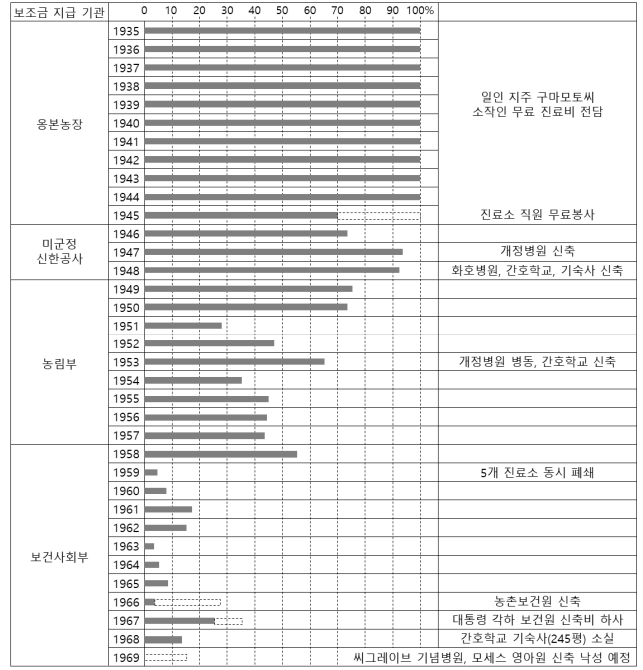


Fig. 3. Status of subsidies by year (Sources : Table 2. 12 )

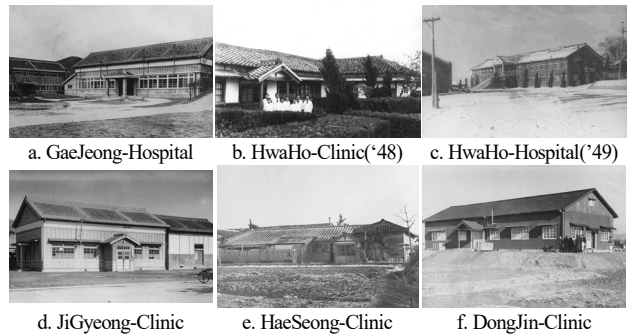


Fig. 4. The laboratory's facilities in the 1948s(Sources : Table 2. 22 )

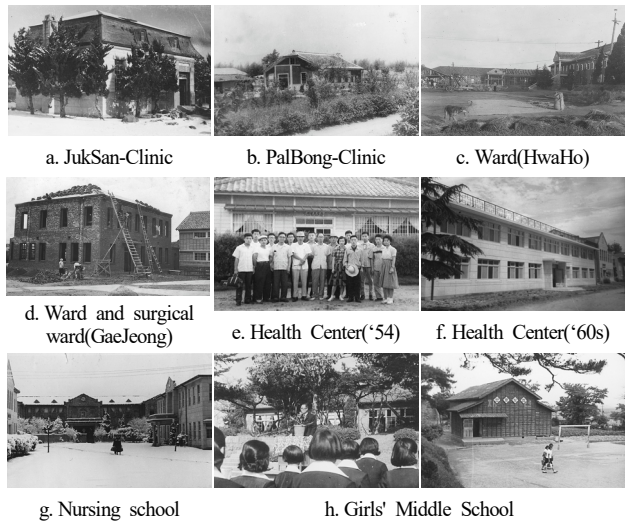


Fig. 5. The laboratory's facilities(1949-1956) (Sources : Table 2. 22 )

기관명	일인농장 소작인 무료진료										미군정		농림부										보건사회부																
	1935	36	37	38	39	40	41	42	43	44	45	46	47	48	49	50	51	52	53	54	55	56	57	58	59	60	61	62	63	64	65	66	67	68	69	70			
개정진료소 병원(옥구)	[Bar chart showing expansion from 1935 to 1969]																																						증합병원 승격
화호진료소 병원(정읍)	[Bar chart showing expansion from 1935 to 1969]																																						증합병원 승격
이리병원(이리)	[Bar chart showing expansion from 1935 to 1969]																																						
개정뇌병원(옥구)	[Bar chart showing expansion from 1935 to 1969]																																						
지경진료소(옥구)	[Bar chart showing expansion from 1935 to 1969]																																						
해성진료소(옥구)	[Bar chart showing expansion from 1935 to 1969]																																						
임피진료소(옥구)	[Bar chart showing expansion from 1935 to 1969]																																						
청하진료소(김제)	[Bar chart showing expansion from 1935 to 1969]																																						
광활진료소(김제)	[Bar chart showing expansion from 1935 to 1969]																																						
죽산진료소(김제)	[Bar chart showing expansion from 1935 to 1969]																																						
동산진료소(완주)	[Bar chart showing expansion from 1935 to 1969]																																						
팔봉진료소(익산)	[Bar chart showing expansion from 1935 to 1969]																																						
군산치과진료소(군산)	[Bar chart showing expansion from 1935 to 1969]																																						
신태인진료소(정읍)	[Bar chart showing expansion from 1935 to 1969]																																						
개정간호학교(옥구)	[Bar chart showing expansion from 1935 to 1969]																																						
개정농촌보건원(옥구)	[Bar chart showing expansion from 1935 to 1969]																																						
일심영아원(옥구)	[Bar chart showing expansion from 1935 to 1969]																																						
일맥영아원(군산)	[Bar chart showing expansion from 1935 to 1969]																																						
화호여자중학교(정읍)	[Bar chart showing expansion from 1935 to 1969]																																						
화호여자고등학교	[Bar chart showing expansion from 1935 to 1969]																																						

Fig. 6. Changes in institutions under the Institute for Rural health from 1935 to 1969 (Sources : Table 2. 12 )

가 가 .  
 , , (1949), (1951),  
 (1951) ,  
 (1950)  
 .  
 ( ) (1951) .  
 (1952) ,  
 (1953), ( ) (1952-54),  
 ( ) (1952) ,  
 ,  
 10%  
 . 가  
 가 .  
 8)  
 1959 1935  
 , , , ,  
 1950  
 가  
 (1961),  
 (1961)

Table 13. List of expansion of laboratory facilities by year

	-
1948.3.	-
1948.9.	- , ( ) ,
1948.11.	-
1949.1.	-
1949.8.	-
1950.6.	- 2 ( 2 109 ) ( 2 210 )
1951.6.	- ( ) , ( )
1951.7.	- 가 7 2 1 31
1951.12.	- ( )
1952.2.	- ( )
1952.3.-5.	- (3 )
1952.5.	-
1952.7.	- ( 150 ) ( 92 )
1953.11.	- ( 150 2 ) (35 )
1954.8.	- ( )
1955.3.	- 가(舊 )
1957.8.	-
1961.5.	-
1965.5.	- ( )

Sources : (1953, 가 ), pp.21-25

, ( ) , 1993, pp.400-403

8)

가 .

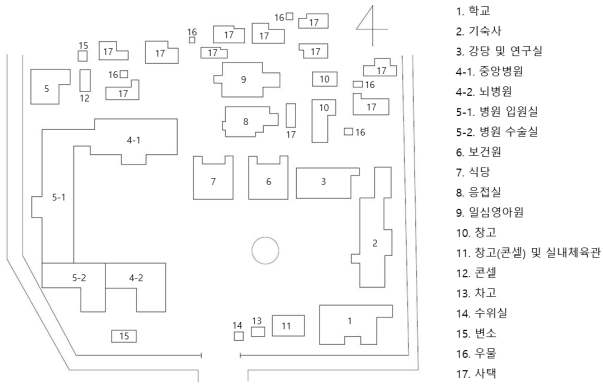


Fig. 7. Laboratory layout in 1967(GaeJeong)(Sources : Table 2. 14 )



Fig. 8. Distribution of research institute facilities after liberation

5.

1935 1960

1935

1942

1948

1948

1. , , 7(1), 2003.
2. , 1940-60 , 72, 2009.
3. , , 129, 2014.
4. , , 19, 1994.
5. , , 2004.
6. , , 26(2), 2023.
7. , ( ) , 1993.
- 8.
- 9.
10. 가 , <https://www.archives.go.kr>
11. , <https://newslibrary.naver.com>

: 2024. 10. 08

: 2024. 10. 31

( 1 ) : 2024. 11. 06

: 2024. 11. 06