

## Original Research



# *Carthamus tinctorius* seeds–*Taraxacum coreanum* combination attenuates scopolamine-induced memory deficit through regulation of inflammatory response and cholinergic function

## OPEN ACCESS

**Received:** May 29, 2024  
**Revised:** Jul 19, 2024  
**Accepted:** Jul 30, 2024  
**Published online:** Aug 12, 2024

### \*Corresponding Authors:

#### Hyun Young Kim

Department of Food Science and Nutrition,  
Gyeongsang National University, 33 Dongjin-  
ro, Jinju 52725, Korea.

Tel. +82-55-772-3277

Fax. +82-55-722-1439

Email. hyunyoung.kim@gnu.ac.kr

#### Eun Ju Cho

Department of Food Science and Nutrition,  
Pusan National University, 2 Busandaehak-ro  
63beon-gil, Geumjeong-gu, Busan 46241,  
Korea.

Tel. +82-51-510-2837

Fax. +82-51-583-3648


Email. ejcho@pusan.ac.kr

©2024 The Korean Nutrition Society and the  
Korean Society of Community Nutrition  
This is an Open Access article distributed  
under the terms of the Creative Commons  
Attribution Non-Commercial License ([https://  
creativecommons.org/licenses/by-nc/4.0/](https://creativecommons.org/licenses/by-nc/4.0/))  
which permits unrestricted non-commercial  
use, distribution, and reproduction in any  
medium, provided the original work is properly  
cited.


### ORCID iDs

Mei Tong He 


<https://orcid.org/0000-0001-5766-6178>

Yu-Su Shin 

<https://orcid.org/0000-0002-2624-6397>

Hyun Young Kim 

<https://orcid.org/0000-0003-2241-2877>

Eun Ju Cho 

<https://orcid.org/0000-0003-4282-3219>

Mei Tong He <sup>1</sup>, Yu-Su Shin <sup>2</sup>, Hyun Young Kim <sup>3§</sup>, and Eun Ju Cho <sup>4,5§</sup>

<sup>1</sup>College of Korean Medicine, Gachon University, Seongnam 13120, Korea

<sup>2</sup>Department of Ginseng and Medicinal Herb, National Institute of Horticulture Herbal Science, Rural  
Development Administration, Eumseong 27709, Korea

<sup>3</sup>Department of Food Science and Nutrition, Gyeongsang National University, Jinju 52725, Korea

<sup>4</sup>Department of Food Science and Nutrition, Pusan National University, Busan 46241, Korea

<sup>5</sup>BK21 FOUR Program: Precision Nutrition Program for Future Global Leaders, Pusan National University,  
Busan 46241, Korea

## ABSTRACT

**BACKGROUND/OBJECTIVES:** There is growing interest in herbal medicines for managing age-related diseases, such as Alzheimer's and Parkinson's. Safflower seeds (*Carthamus tinctorius* L. seeds, CTS) and dandelions (*Taraxacum coreanum*, TC) are widely used to treat bone- or inflammation-related diseases in Oriental countries. This study investigated the protective effect of the CTS–TC combination on scopolamine (Sco)-induced memory deficits through inflammatory response and cholinergic function. Moreover, marker components such as serotonin, *N*-(*p*-coumaroyl) serotonin, *N*-feruloylserotonin, chlorogenic acid, and chicoric acid in the CTS–TC combination were analyzed for their potential benefits on memory function.

**MATERIALS/METHODS:** Water extracts of CTS, TC, and the CTS–TC combination at various ratios (4:1, 1:1, and 1:4) (100 mg/kg) were orally administered to mice for 14 days. Sco (1 mg/kg) was intraperitoneally injected into the mice before each behavioral test. T-maze and novel object recognition tests were conducted to monitor behavioral changes after the treatment. Western blotting was performed to detect protein expression. In addition, the presence of 5 biomarkers, serotonin, *N*-(*p*-coumaroyl) serotonin, *N*-feruloylserotonin, chlorogenic acid, and chicoric acid, was analyzed using high-performance liquid chromatography (HPLC).

**RESULTS:** Behavioral tests showed that the CTS–TC combination enhanced memory function in Sco-injected mice. Inflammation-related proteins (inducible nitric oxide synthase, cyclooxygenase-2, and glial fibrillary acidic protein) were downregulated after treatment with the CTS–TC combination. The acetylcholinesterase protein expression was also downregulated. HPLC analysis revealed that *N*-feruloylserotonin and chicoric acid were the predominant components, followed by *N*-(*p*-coumaroyl) serotonin, chlorogenic acid, and serotonin.

**CONCLUSION:** These findings suggest that the CTS–TC combination protects against Sco-induced memory deficits by inhibiting inflammatory responses and cholinergic dysfunction. *N*-feruloylserotonin and chicoric acid, along with *N*-(*p*-coumaroyl) serotonin, chlorogenic acid, and serotonin, might be biomarkers for the CTS–TC combination, and their effects on memory protection warrant further study.

**Conflict of Interest**

The authors declare no potential conflicts of interests.

**Author Contributions**

Conceptualization: He MT, Kim HY, Cho EJ;  
 Formal analysis: He MT, Shin YS; Investigation: He MT, Kim HY; Methodology: He MT, Shin YS, Cho EJ; Software: He MT, Shin YS; Writing - review & editing: He MT, Kim HY, Cho EJ.

**Keywords:** Dandelion; memory deficit; safflower; scopolamine

**INTRODUCTION**

Neurodegenerative diseases such as Alzheimer’s disease (AD) and Parkinson’s disease are frequently observed in older populations. AD is a complex disease characterized by cognitive dysfunction in learning and memory [1]. Pathological characteristics of AD include astrogliosis and microglial activation, which are associated with inflammatory responses and cholinergic dysfunction. These pathological processes lead to neurodegeneration and synaptic and neuronal loss [2].

Inflammation is a harmful stimulus that causes tissue damage, including the release of inflammatory mediators, such as inducible nitric oxide synthase (iNOS) and cyclooxygenase-2 (COX-2) [3]. Neuroinflammation has been observed in AD brains due to the release of pro-inflammatory factors [4]. Astrocytes in the central nervous system form an integral part of the blood-brain barrier (BBB) [5]. Astrocytes interact with other cells including neurons and play a role in maintaining tissue homeostasis, supporting neuronal development, and inflammatory modulation [5,6]. Glial fibrillary acidic protein (GFAP) is an astrocyte marker [7]. High level of GFAP release was related to worse memory in AD animal studies [8]. Thus, the inhibition of the inflammatory response may protect against memory loss.

Acetylcholinesterase (AChE) inhibitors have been developed based on the cholinergic hypothesis, which explains the pathogenesis of AD associated with cholinergic activities [9,10]. In patients with AD, cholinergic neurons are lost with a reduction in M2 muscarinic receptors, which regulate the release of acetylcholine [11]. Enhancement of cholinergic signaling in the central nervous system improves memory function [9]. Moreover, the regulation of acetylcholine by AChE can attenuate inflammation [12]. Thus, controlling cholinergic activity may prevent AD.

Scopolamine (Sco) is a muscarinic acetylcholine receptor antagonist that reduces neurotransmission in the central nervous system and induces cognitive dysfunction including memory loss [13,14]. Sco can readily permeate the BBB and induce cognitive disorders. In addition, Sco can mimic AD conditions and has been considered a potent model of AD [9,15]. Thus, Sco has been widely used as an experimental model of cognitive impairment in neuroscience-related studies [16].

Herbal medicines are marked by multiple components and effects, and play important roles in the development of new therapies with several advantages over conventional chemical compound-based medications [17]. Both safflower (*Carthamus tinctorius* L.) and dandelion (*Taraxacum coreanum*, TC) belong to the *Asteraceae* family and have been widely used as folk medicines, exerting strong anti-inflammatory, antioxidant, hepatoprotective, and antimicrobial activities [18]. Seeds of safflower (*Carthamus tinctorius* L. seeds, CTS) are used to treat osteoporosis and rheumatism in Korea [19], and TC is a plant native to Korea with antioxidative and anticancer activities [20,21]. In addition, it has been reported that the pharmacological activities of these herbs are attributed to their various phytochemical components, such as phenolic acids, polyphenolic compounds, polysaccharides, and lignans [18]. According to the previous studies, herbal medicines are often used in compatibility rather than being used in single, to promote effects and to reduce adverse reactions [22]. The most common and highest frequency

of compatibility among herbal pairs is 1:1 [22,23]. A proportion test design method, called the increase-decrease baseline geometric proportion design method, is commonly used for studying the ratio between 2 herbal medicines to explore whether the combination has a synergistic effect or to screen the best ratio for the combination [24-26]. According to this method, when one herb is combined with another, herb A increases by 10–30% while herb B decreases by 10–30% until the maximum compatibility of these 2 herbs is reached, which means herb A alone and vice versa [24]. Therefore, in this study, the ratio of the CTS–TC combination was set to 1:4, 1:1, and 4:1, and the limit of the ratio was CTS and TC alone, to investigate whether these ratios have protective effects against memory deficits induced by Sco. Additionally, we determined the potential active components of the CTS–TC combination using high-performance liquid chromatography (HPLC). Previous studies have identified various phytochemicals in safflower and TC and have indicated the pharmacological activities of each plant. For example, hydroxysafflor yellow A from the flower of safflower has been found to exert anti-inflammatory, anti-cancer, vascular, brain, and liver disease effects, as well as cell proliferation and inhibition effects [27]. TC is rich in compounds such as chicoric acid, chlorogenic acid, caffeic acid, and luteolin, which show hepatoprotective, anti-inflammatory, antiviral, and antidepressive effects [28,29]. Recent studies have demonstrated that serotonin derivatives from CTS may exert antioxidant and cholinergic improvement effects [30]. Therefore, we chose serotonin and its derivatives (*N*-feruloylserotonin and *N*-(*p*-coumaroyl) serotonin) from CTS and the abundant compounds from TC (chicoric acid and chlorogenic acid) for HPLC analysis to explore the contents of these compounds in combination with CTS and TC.

## MATERIALS AND METHODS

### Sample preparation

Water extracts of CTS, TC, and the CTS–TC combination at ratios of 4:1, 1:1, and 1:4 were obtained through a series of processes including pulverization, extraction, concentration, and drying. Briefly, CTS and the aerial part of TC were dried, pulverized, and then mixed according to the design proportions (CTS:TC at 4:1, 1:1, and 1:4). Subsequently, CTS, TC, and their mixtures were placed in an extraction tank, and purified water was added 20 times. Heat extraction was conducted at 90°C for 8 h and then filtered using a 200-mesh filter. The extracts were concentrated under a temperature at 60°C and then freeze-drying for 48 h. The water extracts of CTS and TC yielded 8.4% and 30.6%, respectively, of the original herbs, and the water extracts of the CTS–TC combination at 4:1, 1:1, and 1:4 ratios yielded 16.0%, 26.3%, and 34.0%, respectively, of the original mixtures.

### HPLC analysis

An aliquot of the aqueous extract (10 mg) of CTS–TC combination (at the ratio of 4:1, 1:1, and 1:4, respectively) was dissolved in 10 mL of 50% methanol and passed through a Dismic-25 JP membrane filter (Advantec Toyo, Tokyo, Japan; pore diameter: 5 µm). Next, 10 µL of the sample was injected into a reverse-phase HPLC system with a YMC-Pack ODS-AM (4.6 × 250 mm, 5 µm pore size, YMC, Kyoto, Japan) column at 35°C. The mobile phase consisted of a 0.1% aqueous solution of formic acid and acetonitrile and the following gradient conditions were used: 0 min, 0% B; 4 min, 0% B; 10 min, 6% B; 14 min, 22% B; 60 min, 28% B; and 70 min, 100% B. The flow rate was 0.8 mL/min. UV absorbance at 280 nm was monitored using an Agilent 1260 series diode array detector (Agilent Technologies, Waldbronn, Germany). All peaks were assigned through co-injection tests with authentic samples and by comparison with the UV spectral data. All measurements were performed in triplicate.

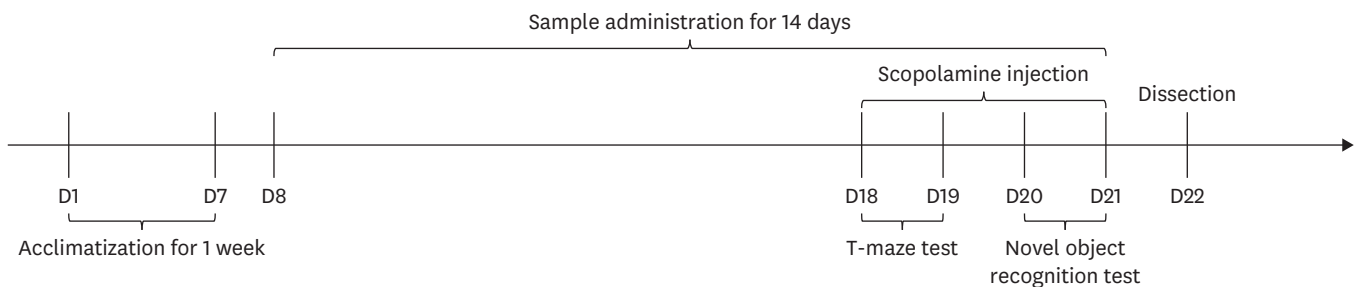
### Animal experiment

Five-week-old male ICR mice (Orient Inc., Seongnam, Korea) that weighed 26–28 g were housed in an environment with a 12 h light/dark cycle, a constant temperature of  $22 \pm 2^\circ\text{C}$ , and humidity of  $50 \pm 10\%$ . The animal experimental procedures followed the Animal Research: Reporting of In Vivo Experiments guidelines 2.0, and the experimental protocol was approved by the Pusan National University Institutional Animal Care and Use Committee (approval number: PNU-2018-1873). The mice were fed a standard laboratory diet and had free access to water.

The experimental schedule is illustrated in **Fig. 1**. After one week of acclimatization, the mice were randomly divided into 7 groups of similar average weights. The experiment groups are as follows: 1) Normal (Nor) = water + 0.9% NaCl; 2) Sco = water + Sco; 3) CTS = CTS + Sco; 4) TC = TC + Sco; 5) 4:1 = CTS–TC combination at a ratio of 4:1 + Sco; 6) 1:1 = CTS–TC combination at a ratio of 1:1 + Sco; 7) 1:4 = CTS–TC combination at a ratio of 1:4 + Sco. Samples (100 mg/kg, 100  $\mu\text{L}/\text{day}$ ) dissolved in water were orally administered to mice by using an oral gavage needle for 14 consecutive days, while those in the Sco group received water on the same schedule. To induce memory deficits, mice (Sco, CTS, TC, and CTS–TC combination groups) were received 1 mg/kg of Sco injection (intraperitoneal injection, 100  $\mu\text{L}/\text{day}$ ) 30 min before each behavioral test, while the Nor group received 0.9% NaCl solution [31]. The animals were sacrificed on the day of behavioral tests. The whole brains of the mice were quickly removed and stored at  $-80^\circ\text{C}$ .

### T-maze test

To investigate spatial working memory, the T-maze test was conducted using the method described by Montgomery [32], with a slight modification. The black-painted T-shaped equipment contained 3 regions: start arm, left arm, and right arm (70 cm total width of the maze, 65 cm total length, and 7 cm height). A clapboard separated the left and right arms. Behavioral experiments were conducted over 2 days. On the first day, during the training session, each mouse explored from the start arm to the left arm for 4 min while the right arm was blocked. After the training, the mice rested in their cages for 24 h. The next day, during the test session, the arms were opened, and the mice were allowed to explore both arms for 4 min. The frequency of exploring each arm was recorded, and the space perceptive ability (%) was calculated as the ratio of the frequency of exploring the left or right arm to the total number of explorations, multiplied by 100.



**Fig. 1.** Time schedule of the animal experiment. Mice were acclimatized for 1 week. Samples including CTS, TC, and CTS–TC combination (100 mg/kg/day) were orally administered to the mice for 14 days. Scopolamine (1 mg/kg) was intraperitoneal injected to the mice 30 min before each behavioral test. CTS, *Carthamus tinctorius* L. seeds; TC, *Taraxacum coreanum*.

### Novel object recognition test

The recognition memory of mice was determined using the novel object recognition test [33]. The test was performed using a black-painted open-field square apparatus (40 cm × 40 cm × 40 cm). In the training session, 2 identical objects (A and A) were placed at a fixed distance in the apparatus, and the mice were allowed to move and touch each object for 4 min. The test session started after 24 h and allowed the mice to explore the objects for 4 min; however, one of the objects used in the training session was replaced with a completely different object (A and B). Cognitive function in mice was measured as object cognitive ability (%), which describes the ratio of the number of touches of the familiar object (training session) to the novel object (test session) over the entire exploration time.

### Western blot analysis

To observe protein expression changes, mouse brain tissue was homogenized in lysis buffer (radioimmunoprecipitation assay buffer mixed with protease inhibitor cocktail) and the tissue homogenate was centrifuged at 12,000 rpm at 4°C for 20 min. Protein concentration was determined using the Bradford Protein Assay Kit (Bio-Rad, Hercules, CA, USA) in accordance with the manufacturer's instructions. Several dilutions of protein standard range 0–500 µg/mL was prepared using a known concentration of bovine serum albumin (1 mg/mL), to generate a standard curve. The 200 µL of Bradford working reagent (Bio-Rad) was added to standards and samples, mixed and then recorded the absorbances at 595 nm. The amount of protein in each sample was determined using a standard curve. Equal amounts (15 µg/lane) of samples were separated by 10% sodium dodecyl sulfate polyacrylamide gel electrophoresis. Proteins were then transferred onto polyvinylidene fluoride membranes. A skim milk solution (5%) was used to block nonspecific binding sites on the membranes. Then the membranes were incubated with primary antibodies including AChE (sc-373901; Santa Cruz Biotechnology, Santa Cruz, CA, USA), iNOS (#13120; Cell Signaling, Danvers, MA, USA), COX-2 (#12282; Cell Signaling), GFAP (#12389; Cell Signaling), and β-actin (#8457; Cell Signaling) overnight at 4°C. The membranes were washed and incubated with secondary antibodies (anti-rabbit and anti-mouse, #7074 and #7076, respectively; Cell Signaling Technology). An enhanced chemiluminescence solution mix was used to visualize the bands using a chemiluminescent imaging system (Davinch Chemi, Seoul, Korea).

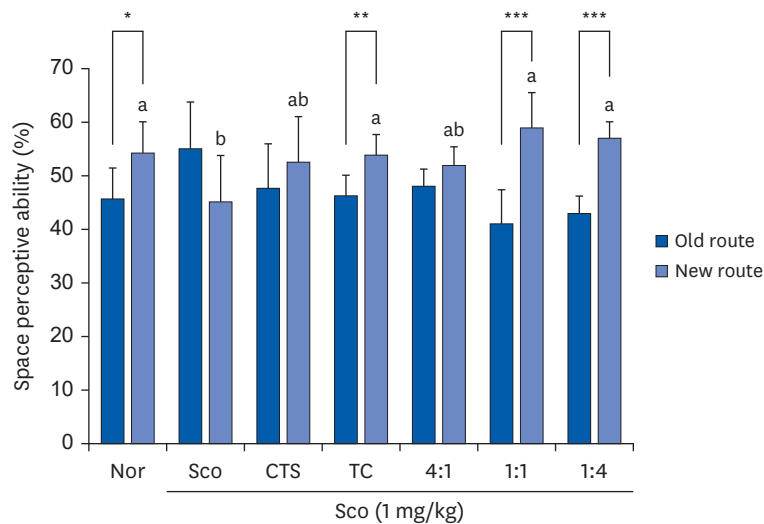
### Statistical analysis

Data were presented as the mean ± SD. Statistical analyses were conducted using SPSS 23.0 (SPSS Inc., Chicago, IL, USA). For comparisons among groups, data were analyzed using a 1-way analysis of variance, followed by Duncan's post-hoc test. The comparison between the old route (familiar object) and the new route (novel object) was conducted using the Student's *t*-test. Statistical significance was set at  $P < 0.05$  or less.

## RESULTS

### Effect of CTS–TC combination on spatial working memory in Sco-injected mice

As shown in **Fig. 2**, no significant difference was observed between mice approaching the old and new routes in the Sco group, indicating that a cognitive deficit was induced by Sco. In contrast, significant differences were observed between the old and new routes in the groups of TC (46.2% vs. 53.8%,  $P = 0.008$ ), 1:1 (41% vs. 59%,  $P = 0.001$ ), and 1:4 (43% vs. 57%,  $P < 0.001$ ). In the new route, ratios of 1:1 and 1:4 showed more frequent entries after training compared to CTS or TC treatment alone.



**Fig. 2.** Effects of CTS–TC combination on T-maze test in Sco-injected mice. Mice were allowed to explore one arm (one arm was blocked) for 4 min and then returned to their home cage. One day after training, 2 arms were opened and allowed the mice to explore for 4 min. The times for the mice to enter each arm were recorded.

Values are expressed as mean  $\pm$  SD ( $n = 6/\text{group}$ ).

The experiment groups are as follows: Nor = 0.9% NaCl + water; Sco = Sco + water; CTS = CTS + Sco; TC = TC + Sco; 4:1 = CTS–TC combination at 4:1 ratio + Sco; 1:1 = CTS–TC combination at 1:1 ratio + Sco; 1:4 = CTS–TC combination at 1:4 ratio + Sco.

Nor, normal; Sco, scopolamine; CTS, *Carthamus tinctorius* L. seeds; TC, *Taraxacum coreanum*.

\* $P < 0.05$ , \*\* $P < 0.01$ , \*\*\* $P < 0.001$  are significantly different between old and new routes by Student's *t*-test.

<sup>a,b</sup>Significantly different ( $P < 0.05$ ) among the groups by Duncan's multiple range test.

### Effect of CTS–TC combination on object recognition memory in Sco-injected mice

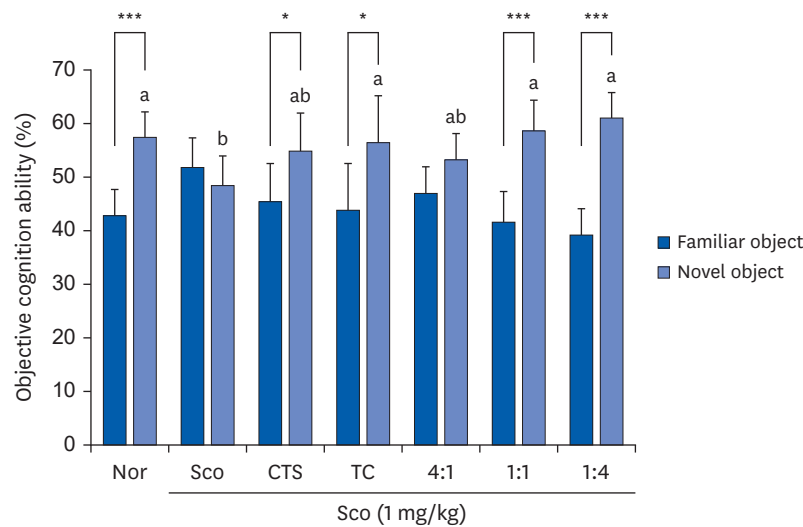
No significant differences were observed between the groups during the training sessions. In the test session (**Fig. 3**) using 2 different objects (A and B), the Nor group showed higher exploration of the novel object than the familiar object. However, Sco significantly induced cognitive deficits in the Sco group, with no significant difference between the novel and familiar objects. Significant differences between familiar and novel objects were found for CTS (45.3% vs. 54.8%,  $P = 0.046$ ), TC (43.7% vs. 56.3%,  $P = 0.032$ ), 1:1 (41.5% vs. 58.5%,  $P < 0.001$ ), and 1:4 (39.2% vs. 60.8%,  $P < 0.001$ ).

### Effect of CTS–TC combination on AChE protein expression in Sco-injected mice

As shown in **Fig. 4**, the highest AChE protein expression was observed in the Sco group after Sco injection. However, the administration of CTS or TC alone and the CTS–TC combination significantly downregulated the expression of AChE. Interestingly, the CTS–TC combination at all ratios downregulated AChE protein expression more effectively than CTS or TC alone, especially at a 1:1 ratio, and decreased AChE protein expression by approximately 2-fold compared to CTS or TC alone.

### Effect of the CTS–TC combination on iNOS, COX-2, and GFAP protein expressions in Sco-injected mice

The effect of the CTS–TC combination on inflammation-related factors was evaluated (**Fig. 5**). iNOS and COX-2 protein expression was significantly upregulated by Sco compared to the Nor group. However, the groups administered CTS or TC alone and the CTS–TC combination significantly downregulated the expression of iNOS and COX-2. The expression of GFAP was increased in the Sco group; however, it was reversed after the administration of CTS and TC, as well as the CTS–TC combination. Moreover, the CTS–TC combination at all ratios effectively downregulated the expression of these proteins compared with CTS or TC alone.



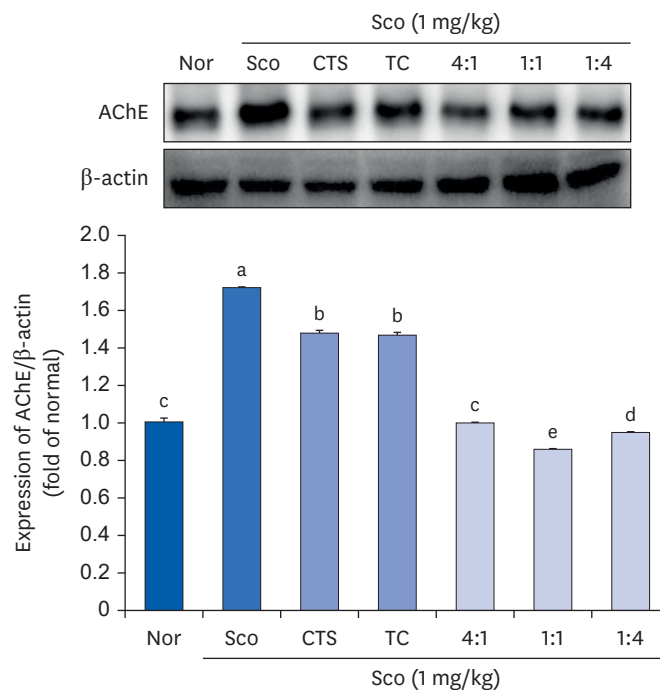
**Fig. 3.** Effects of CTS–TC combination on novel object recognition test in Sco-induced mice. Mice were allowed to explore the same objects (A and A') for 4 min and then returned to their home cage. One day after training, one of the objects was replaced (A and B) and allowed the mice to explore for 4 min. The times for the mice to contact each object were recorded. Values are expressed as mean ± SD (n = 6/group).

The experiment groups are as follows: Nor = 0.9% NaCl + water; Sco = Sco + water; CTS = CTS + Sco; TC = TC + Sco; 4:1 = CTS–TC combination at 4:1 ratio + Sco; 1:1 = CTS–TC combination at 1:1 ratio + Sco; 1:4 = CTS–TC combination at 1:4 ratio + Sco.

Nor, normal; Sco, scopolamine; CTS, *Carthamus tinctorius* L. seeds; TC, *Taraxacum coreanum*.

\* $P < 0.05$ , \*\*\* $P < 0.001$  are significantly different between familiar and novel objects by Student's *t*-test.

<sup>a,b</sup>Significantly different ( $P < 0.05$ ) among the groups by Duncan's multiple range test.

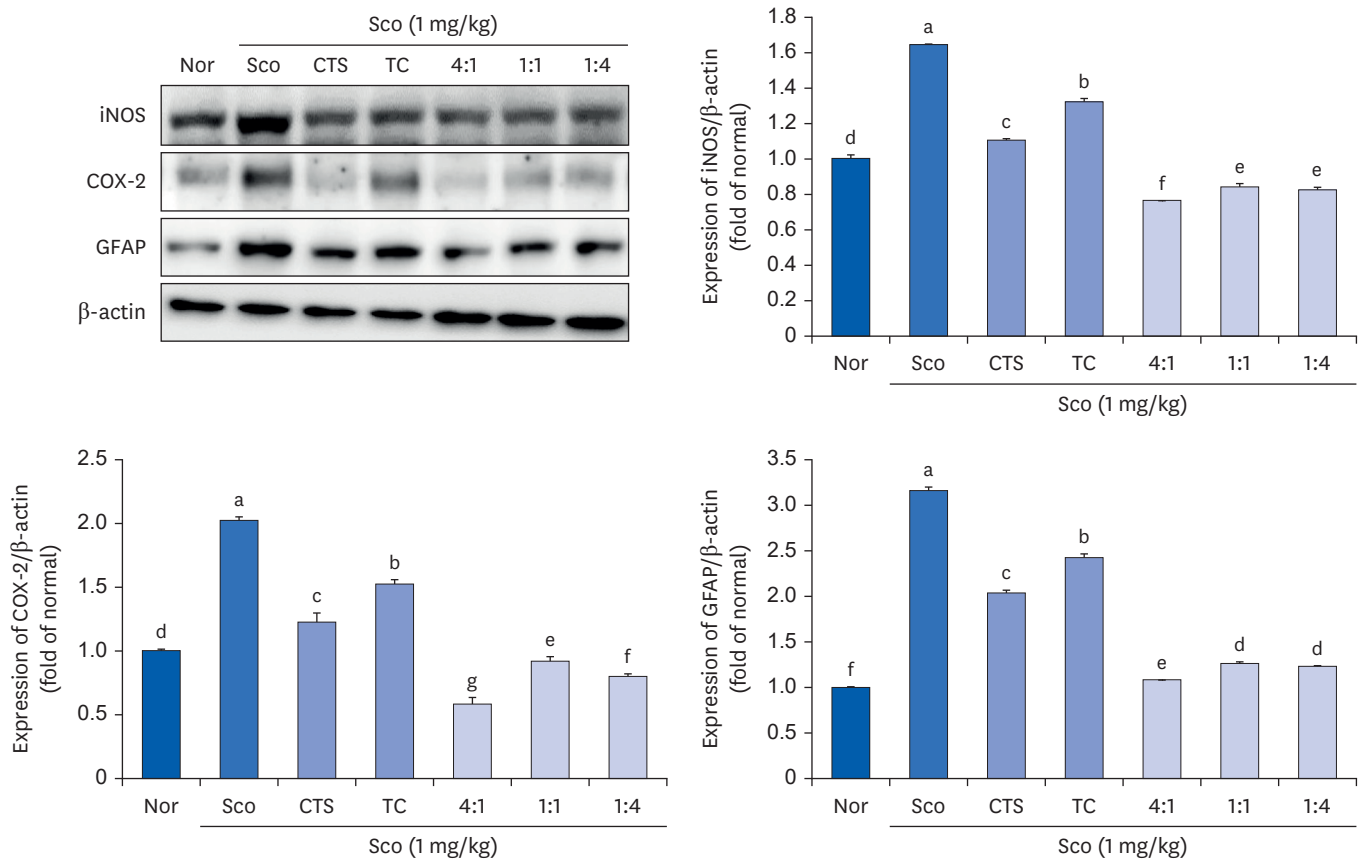


**Fig. 4.** Effect of CTS–TC combination on AChE protein expression in Sco-induced mice. The whole brain lysate was electrophoresed and immunoblotted with AChE antibody. The protein level was quantitated using Image J and normalized with β-actin. Values are expressed as mean ± SD.

The experiment groups are as follows: Nor = 0.9% NaCl + water; Sco = Sco + water; CTS = CTS + Sco; TC = TC + Sco; 4:1 = CTS–TC combination at 4:1 ratio + Sco; 1:1 = CTS–TC combination at 1:1 ratio + Sco; 1:4 = CTS–TC combination at 1:4 ratio + Sco.

Nor, normal; Sco, scopolamine; CTS, *Carthamus tinctorius* L. seeds; TC, *Taraxacum coreanum*; AChE, acetylcholinesterase.

<sup>a-e</sup>Significantly different ( $P < 0.05$ ) among the groups by Duncan's multiple range test.



**Fig. 5.** Effect of CTS–TC combination on iNOS, COX-2, and GFAP protein expression in Sco-induced mice. The whole brain lysate was electrophoresed and immunoblotted with iNOS, COX-2, and GFAP antibodies. The protein level was quantitated using Image J and normalized with β-actin.

Values are expressed as mean ± SD.

The experiment groups are as follows: Nor = 0.9% NaCl + water; Sco = Sco + water; CTS = CTS + Sco; TC = TC + Sco; 4:1 = CTS–TC combination at 4:1 ratio + Sco; 1:1 = CTS–TC combination at 1:1 ratio + Sco; 1:4 = CTS–TC combination at 1:4 ratio + Sco.

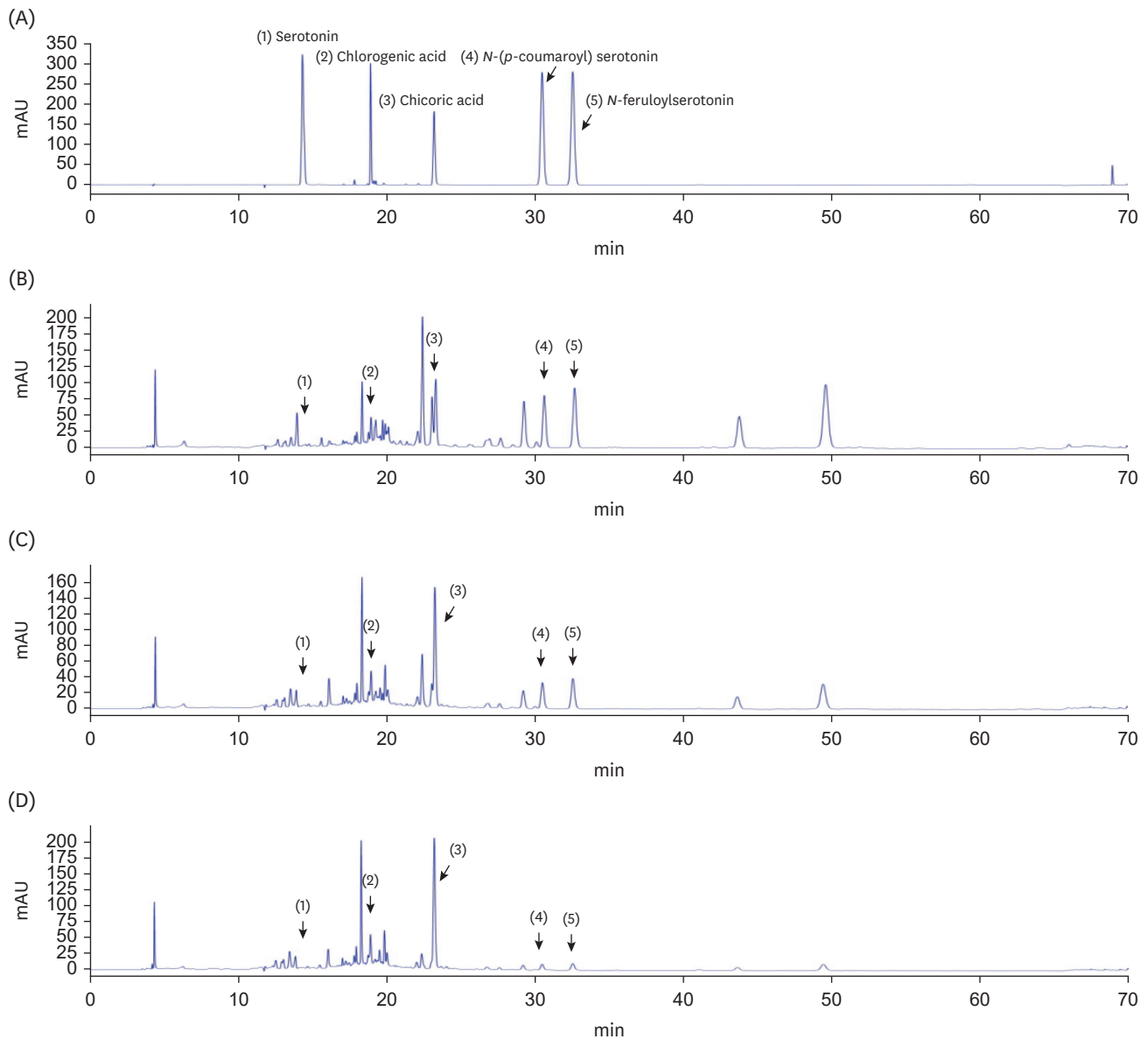
iNOS, inducible nitric oxide synthase; COX-2, cyclooxygenase-2; GFAP, glial fibrillary acidic protein; Nor, normal; Sco, scopolamine; CTS, *Carthamus tinctorius* L. seeds; TC, *Taraxacum coreanum*.

<sup>a</sup>Significantly different ( $P < 0.05$ ) among the groups by Duncan's multiple range test.

### Identification and quantification of the compounds of CTS–TC combination

The 5 major components, chlorogenic acid, chicoric acid, serotonin, *N*-(*p*-coumaroyl) serotonin, and *N*-feruloylserotonin, in the CTS–TC combination were qualitatively analyzed (Fig. 6). The order of elution was as follows: serotonin > chlorogenic acid > chicoric acid > *N*-(*p*-coumaroyl) serotonin > *N*-feruloylserotonin. A calibration equation for each standard compound was constructed by plotting the peak area ( $y$ ) against the concentration of the compound ( $x$ ) (Table 1). The concentrations of these components differed depending on the ratio of CTS to TC. At 4:1 ratio, chicoric acid ( $0.937 \pm 0.017$  mg/g) was the most abundant, followed by *N*-feruloylserotonin, *N*-(*p*-coumaroyl)serotonin, chlorogenic acid, and serotonin ( $0.559 \pm 0.009$ ,  $0.491 \pm 0.009$ ,  $0.132 \pm 0.006$ , and  $0.028 \pm 0.000$  mg/g, respectively); at 1:1 ratio, chicoric acid ( $2.297 \pm 0.021$  mg/g) was the most abundant, followed by *N*-feruloylserotonin, *N*-(*p*-coumaroyl)serotonin, chlorogenic acid, and serotonin ( $0.405 \pm 0.005$ ,  $0.353 \pm 0.004$ ,  $0.275 \pm 0.004$ , and  $0.043 \pm 0.000$  mg/g, respectively); and at 1:4 ratio, chicoric acid ( $3.875 \pm 0.081$  mg/g) also the most abundant, followed by chlorogenic acid, *N*-feruloylserotonin, *N*-(*p*-coumaroyl)serotonin, and serotonin ( $0.459 \pm 0.016$ ,  $0.185 \pm 0.002$ ,  $0.180 \pm 0.001$ , and  $0.042 \pm 0.000$  mg/g, respectively) (Table 2).





**Fig. 6.** High-performance liquid chromatography chromatograms of CTS-TC combination at different ratios. Serotonin (1), chlorogenic acid (2), chicoric acid (3), *N*-(*p*-coumaroyl) serotonin (4), and *N*-feruloylserotonin (5) in mixed standards (A), CTS-TC combination at 4:1 ratio (B), CTS-TC combination at 1:1 ratio (C), and CTS-TC combination at 1:4 ratio (D).

CTS, *Carthamus tinctorius* L. seeds; TC, *Taraxacum coreanum*.

## DISCUSSION

While previous studies have reported the various pharmacological effects of CTS and TC extracts and have documented the effects of different parts of safflower on the nervous system, the neuroprotective effects of CTS have not yet been fully investigated. One of the most widely used forms of CTS is CTS oil, which has been shown to have positive effects on hypothalamic proliferation and neurogenesis in young adult mice [34]. A recent study by Liang and Wang [35] has reviewed the benefits of safflower, including CTS and its active constituents, for AD treatment. Kim *et al.* [30] previously reported that CTS contains various cholinergic-improving compounds, such as serotonin and its derivatives. CTS

**Table 1.** Retention time, calibration equation, and correlation coefficient values

Compound (mg/g)	Retention time (min)	Calibration equation	Correlation coefficient ( $r^2$ )
Serotonin	14.26	$y = 33.312x - 22.383$	0.997
<i>N</i> -( <i>p</i> -coumaroyl) serotonin	30.40	$y = 41.397x - 55.346$	0.998
<i>N</i> -feruloylserotonin	32.47	$y = 46.351x - 77.917$	0.999
Chlorogenic acid	18.86	$y = 13.54x + 116.93$	0.999
Chicoric acid	23.13	$y = 17.104x - 35.308$	0.998

*y*, peak area; *x*, concentration of standards.

**Table 2.** Contents of the active compounds in CTS–TC combination

Compounds (mg/g)	4:1	1:1	1:4
Serotonin	0.028 ± 0.000	0.043 ± 0.000	0.042 ± 0.000
<i>N</i> -( <i>p</i> -coumaroyl) serotonin	0.491 ± 0.009	0.353 ± 0.004	0.180 ± 0.001
<i>N</i> -feruloylserotonin	0.559 ± 0.009	0.405 ± 0.005	0.185 ± 0.002
Chlorogenic acid	0.132 ± 0.006	0.275 ± 0.004	0.459 ± 0.016
Chicoric acid	0.937 ± 0.017	2.297 ± 0.021	3.875 ± 0.081

Values are presented as the mean ± SD.

The experiment groups are as follows: 4:1 = CTS: TC combination at 4:1 ratio; 1:1 = CTS:TC combination at 1:1 ratio; 1:4 = CTS:TC combination at 1:4 ratio.

CTS, *Carthamus tinctorius* L. seeds; TC, *Taraxacum coreanum*.

extract-administered mice have been shown to improve memory function by suppressing AChE expression, with an improvement in cholinergic dysfunction [30]. The combination of CTS and TC improves cognitive dysfunction [36]. Moreover, dandelion, a good candidate for food and medical use, has been reported to show neuroprotective effects indirectly due to its antioxidant and anti-inflammatory activities [37,38]. Both the aerial and root parts of TC have been shown to exert neuroprotective effects in glutamate-induced mouse hippocampal HT22 cells by increasing the expression of heme oxygenase-1 and nuclear factor erythroid 2 like 2 [39]. In an AD mouse model, TC extract has been shown to prevent oxidative stress on amyloid- $\beta$  (A $\beta$ )-induced memory function by reducing lipid peroxidation level and NO production [40]. Sohn and Shin [41] have demonstrated that TC extract had an inhibitory effect on AChE activity, and significant behavioral changes were observed in passive avoidance, Y-maze, and water maze tests in a Sco-induced amnesia mouse model. In an A $\beta$ -injected mouse model, administration of CTS and TC combination attenuated amyloidogenesis by promoting A $\beta$  clearance and degradation, as well as improved mouse behavior, as evaluated in T-maze, novel object recognition, and Morris water maze tests [36]. Therefore, CTS and TC extracts alone or in combination may have protective effects within the nervous system, and the CTS–TC combination might exert synergistic effects on neuroprotection.

The present study demonstrated the protective effect of the CTS–TC combination against Sco-induced memory impairment through the regulation of pathways related to inflammatory and cholinergic signaling. The components in the extract of the CTS–TC combination were chromatographed and quantified, suggesting that these compounds may be the major phytochemicals in the CTS–TC combination responsible for memory protection.

The T-maze test is commonly used to evaluate the spatial working memory [42]. It has been reported that working memory performance is sensitive to central muscarinic blockade induced by Sco [43]. A previous study using the Arena task revealed that Sco disrupts spatial memory in humans using an Arena task [44]. Memory loss and cognitive dysfunction also have been observed in the Sco-injected mice [45]. Consistent with a previous study, Sco decreased space perceptive ability, which was reversed by the CTS–TC combination. Moreover, it was found that the greater the amount of TC in the combination, the higher the space perceptive ability. In addition to the T-maze test, a novel object recognition test was

conducted to assess non-spatial object memory [46]. A previous study reported that Sco-induced central cholinergic dysfunction contributes to memory impairment in rodents; thus, Sco induction is a useful model for evaluating object recognition memory [47]. The ability to discriminate an item that has been previously exposed depends on the integrity of the hippocampus and the medial temporal lobe [46,48]. In this study, the CTS-TC combination increased novel object recognition ability, which was reduced by Sco. These results suggest that the CTS-TC combination potentially improves spatial memory dysfunction and object cognition impairment induced by Sco.

Activation of AChE has been observed in the brains of patients with AD [49]. AChE blocks cholinergic transmission by hydrolyzing acetylcholine, which has been implicated in learning and memory [50]. Inhibiting AChE is thought to block the hydrolysis of acetylcholine to protect cognitive functions. Choi *et al.* [51] indicated that the CTS extract significantly decreased alcohol-induced AChE activity in the brain. Moreover, the inhibited AChE activity in mouse whole brain has been shown by the water extract of *Taraxacum platycarpum* [52]. In the present study, CTS, TC, and the CTS-TC combination decreased Sco-induced upregulation of AChE protein expression. In particular, the CTS-TC combination at all ratios (4:1, 1:1, and 1:4) synergistically reduced the AChE protein level compared with CTS or TC alone, indicating that the CTS-TC combination has a better effect on AChE suppression. These results suggest that the cholinergic system can be modulated by CTS-TC through suppression of AChE protein expression.

As indicated by clinical and preclinical studies, Sco can damage learning and memory functions in humans and animal models, disrupting cholinergic neurotransmission and triggering inflammatory responses in the brain [53,54]. Brain inflammation has been linked to the overproduction of pro-inflammatory molecules, including nitric oxide (NO), which can initiate neurodegeneration [55]. Moreover, NO production is largely regulated by iNOS in inflammatory conditions as demonstrated previously [56]. Intraperitoneal administration of Sco (1 mg/kg) increased the total nitrite content by approximately 2-fold in the brains of Swiss mice compared to that in the control [57]. In specific pathogen-free C57BL/6N male mice, Sco injection at 2 mg/kg increased hippocampal NO levels and iNOS gene expression by approximately 1.5-fold and 1.6-fold, respectively [58]. COX, including 2 isoforms (COX-1 and COX-2), is an important enzyme in prostaglandins (PGs) synthesis. COX-1 plays a role in PGs production with a homeostatic function, whereas COX-2 promotes the production of pro-inflammatory PGs [59]. Previous studies have shown a significant elevation in COX-1 and COX-2 activities after treatment with 1 mg/kg Sco in the brains of rats [53]. It has been indicated that COX-2 was barely detected in normal conditions but highly expressed during inflammatory responses [60]. The administration of Sco (1 mg/kg) increased COX-2 mRNA levels by approximately 3-fold in ICR male mice [61]. Cho *et al.* [62] demonstrated that hot water extracts of TC significantly inhibited lipopolysaccharide-induced COX-2 protein expression in mice. GFAP is a biomarker of activated astrocytes that links neuroinflammatory responses and neurodegeneration [63,64]. Many reactive astrocytes are associated with cognitive dysfunction in neurodegenerative diseases [6]. Sco increased the proliferation of reactive astrocytes and GFAP expression in the cerebellum and hippocampus of rats [64]. A previous study has shown increased GFAP expression in mouse brains injected with Sco [65]. In the present study, the CTS-TC combination (4:1, 1:1, and 1:4) significantly inhibited the protein expression of iNOS, COX-2, and GFAP, showing a synergistic inhibitory effect compared to CTS or TC alone. Interestingly, it was found that the greater the amount of CTS in combination, the greater the downregulation of these proteins. These results

suggest a potential anti-inflammatory effect of the CTS–TC combination in Sco-induced mice. Focusing on iNOS, COX-2, and GFAP expression after Sco treatment may be helpful in developing targeted therapies for inflammation-related diseases. In addition, recent studies have suggested that plasma GFAP levels can be used as an early marker related to A $\beta$  pathology in AD [66]. Serum GFAP has been used to diagnose and predict mild cognitive impairment-AD [67]. Therefore, GFAP levels in body fluids, including blood, could serve as a valuable biomarker for AD, reflecting the underlying neuroinflammatory processes. However, in this study, GFAP protein levels were only observed in the brain tissue. Regarding this limitation, GFAP levels will be detected in the brain tissue, plasma, serum, and human blood in the near future.

In the present study, 5 components of the CTS–TC pair were analyzed by chromatography and quantitation. High concentrations of chicoric acid and *N*-feruloylserotonin were found in the CTS–TC combination; *N*-(*p*-coumaroyl) serotonin and chlorogenic acid were second, and serotonin was present in a small amount. Many studies have indicated that chicoric and chlorogenic acids from the genus *Taraxacum* exert anti-inflammatory and neuroprotective effects [68,69]. Liu *et al.* [68] demonstrated that chicoric acid prevents inflammation-induced memory impairment by reducing the levels of inflammatory mediators and increasing acetylcholine levels and choline acetyltransferase activity in the mouse brain, suggesting a potential anti-inflammatory effect of chicoric acid. Chlorogenic acid suppresses AChE activity in the hippocampus and frontal cortex [70]. Serotonin is a well-known neurotransmitter with multiple functions, including the regulation of mood, memory, cognition, and sleep [71]. *N*-feruloylserotonin and *N*-(*p*-coumaroyl) serotonin have been isolated and identified as 2 bioactive conjugated serotonins in CTS [72]. Previous studies reported that *N*-feruloylserotonin and *N*-(*p*-coumaroyl) serotonin negatively affect neuronal oxidative stress [73], inflammation [74], and adipogenesis [75]. Kim *et al.* [74] reported that both *N*-feruloylserotonin and *N*-(*p*-coumaroyl) serotonin inhibit lipopolysaccharide-induced inflammatory responses in macrophages by reducing the levels of NO and pro-inflammatory cytokines. *N*-feruloylserotonin suppresses the inflammatory response by neutralizing the activity of the chemokine CCL22 and inhibiting the level of COX-2 [76]. Moreover, *N*-feruloylserotonin and *N*-(*p*-coumaroyl) serotonin isolated from CTS may exert anti-arthritis effects by blocking the nuclear factor- $\kappa$ B signaling pathway [77]. Although the memory improvement effects of CTS–TC combination against Sco may be attributed to these active components, the exact mechanism remains to be explored.

However, in the present study, animal models were used at the age of 6 weeks, which is a period of neural development. Despite the refinement of synaptic connections and myelination during this period, mice are not fully mature, and their neurons proliferate and migrate to their general locations [78]. Another study reported the onset of myelination, including in the hippocampus and corpus callosum, mostly at 2 weeks of age, and mouse neurons progressively upregulated maturation markers over 20 days [79,80]. A previous study related to Parkinson's disease demonstrated that adolescent mice (1-month-old) also induced dramatic spine elimination and formation by 1-methyl-4-phenyl-1,2,3,6-tetrahydropyriding (a neurotoxin that leads to the selective loss of dopaminergic neurons), and this result was significantly increased in the motor cortex of adult mice, indicating that both young and adult mice can effectively mimic the disease [81]. Therefore, rodents at 6 weeks of age can be chosen for neurodegenerative disease models, with the reason that they can significantly represent a critical developmental period and allow researchers to observe disease progression and develop therapeutic interventions in an early stage of the disease. The

present study explored neurodegenerative disease as an early disease mechanism; however, further studies are required to investigate later-stage pathology in adult animal models.

The present study showed that the CTS–TC combination improved Sco-induced memory impairment, as demonstrated by behavioral tests, including the T-maze and novel object recognition tests. Moreover, the CTS–TC combination synergistically downregulated the expression of inflammation-related proteins (iNOS, COX-2, and GFAP) and inhibited AChE protein expression in Sco-treated mice. These protective effects may be supported by the presence of active compounds (chicoric acid, *N*-feruloylserotonin, *N*-(*p*-coumaroyl) serotonin, chlorogenic acid, and serotonin) in the CTS–TC combination, which exert potential activities in modulating cholinergic function and inflammation. Thus, The CTS–TC combination may be considered a potential agent for memory improvement. Considering these limitations, mechanistic studies of CTS–TC combinations in different signaling pathways need to be conducted.

## ACKNOWLEDGMENTS

This work was carried out with the support of “Cooperative Research Program for Agriculture Science & Technology Development (Project No. PJ01312301), Rural Development Administration, Republic of Korea.

## REFERENCES

1. Mucke L. Neuroscience: Alzheimer’s disease. *Nature* 2009;461:895-7. [PUBMED](#) | [CROSSREF](#)
2. Lane CA, Hardy J, Schott JM. Alzheimer’s disease. *Eur J Neurol* 2018;25:59-70. [PUBMED](#) | [CROSSREF](#)
3. Chang EH, Chavan SS, Pavlov VA. Cholinergic control of inflammation, metabolic dysfunction, and cognitive impairment in obesity-associated disorders: mechanisms and novel therapeutic opportunities. *Front Neurosci* 2019;13:263. [PUBMED](#) | [CROSSREF](#)
4. Block ML, Hong JS. Microglia and inflammation-mediated neurodegeneration: multiple triggers with a common mechanism. *Prog Neurobiol* 2005;76:77-98. [PUBMED](#) | [CROSSREF](#)
5. Abdelhak A, Foschi M, Abu-Rumeileh S, Yue JK, D’Anna L, Huss A, Oeckl P, Ludolph AC, Kuhle J, Petzold A, et al. Blood GFAP as an emerging biomarker in brain and spinal cord disorders. *Nat Rev Neurol* 2022;18:158-72. [PUBMED](#) | [CROSSREF](#)
6. Jurga AM, Paleczna M, Kadluczka J, Kuter KZ. Beyond the GFAP-astrocyte protein markers in the brain. *Biomolecules* 2021;11:1361. [PUBMED](#) | [CROSSREF](#)
7. Zhang S, Wu M, Peng C, Zhao G, Gu R. GFAP expression in injured astrocytes in rats. *Exp Ther Med* 2017;14:1905-8. [PUBMED](#) | [CROSSREF](#)
8. Bettcher BM, Olson KE, Carlson NE, McConnell BV, Boyd T, Adame V, Solano DA, Anton P, Markham N, Thaker AA, et al. Astroglialosis and episodic memory in late life: higher GFAP is related to worse memory and white matter microstructure in healthy aging and Alzheimer’s disease. *Neurobiol Aging* 2021;103:68-77. [PUBMED](#) | [CROSSREF](#)
9. Tang KS. The cellular and molecular processes associated with scopolamine-induced memory deficit: a model of Alzheimer’s biomarkers. *Life Sci* 2019;233:116695. [PUBMED](#) | [CROSSREF](#)
10. Anand P, Singh B. A review on cholinesterase inhibitors for Alzheimer’s disease. *Arch Pharm Res* 2013;36:375-99. [PUBMED](#) | [CROSSREF](#)
11. Pepeu G, Grazia Giovannini M. The fate of the brain cholinergic neurons in neurodegenerative diseases. *Brain Res* 2017;1670:173-84. [PUBMED](#) | [CROSSREF](#)
12. Rosas-Ballina M, Tracey KJ. Cholinergic control of inflammation. *J Intern Med* 2009;265:663-79. [PUBMED](#) | [CROSSREF](#)
13. Bajo R, Pusil S, López ME, Canuet L, Pereda E, Osipova D, Maestri F, Pekkonen E. Scopolamine effects on functional brain connectivity: a pharmacological model of Alzheimer’s disease. *Sci Rep* 2015;5:9748. [PUBMED](#) | [CROSSREF](#)

14. Choi JH, Lee EB, Jang HH, Cha YS, Park YS, Lee SH. Allium hookeri extracts improve scopolamine-induced cognitive impairment via activation of the cholinergic system and anti-neuroinflammation in mice. *Nutrients* 2021;13:2890. [PUBMED](#) | [CROSSREF](#)
15. Klinkenberg I, Blokland A. The validity of scopolamine as a pharmacological model for cognitive impairment: a review of animal behavioral studies. *Neurosci Biobehav Rev* 2010;34:1307-50. [PUBMED](#) | [CROSSREF](#)
16. Chen WN, Yeong KY. Scopolamine, a toxin-induced experimental model, used for research in Alzheimer's disease. *CNS Neurol Disord Drug Targets* 2020;19:85-93. [PUBMED](#) | [CROSSREF](#)
17. Wang S, Hu Y, Tan W, Wu X, Chen R, Cao J, Chen M, Wang Y. Compatibility art of traditional Chinese medicine: from the perspective of herb pairs. *J Ethnopharmacol* 2012;143:412-23. [PUBMED](#) | [CROSSREF](#)
18. Rolnik A, Olas B. The plants of the Asteraceae family as agents in the protection of human health. *Int J Mol Sci* 2021;22:3009. [PUBMED](#) | [CROSSREF](#)
19. Bessada SM, Barreira JC, Oliveira MB. Asteraceae species with most prominent bioactivity and their potential applications: a review. *Ind Crops Prod* 2015;76:604-15. [CROSSREF](#)
20. Lee HH, Lee SY. Cytotoxic and antioxidant effects of *Taraxacum coreanum* Nakai. and *T. officinale* WEB. extracts. *Korean J Med Crop Sci* 2008;16:79-85.
21. Park MS, So JS, Bahk GJ. Antioxidative and anticancer activities of water extracts from different parts of *Taraxacum coreanum* Nakai cultivated in Korea. *J Korean Soc Food Sci Nutr* 2015;44:1234-40. [CROSSREF](#)
22. Jin Y, Qu C, Tang Y, Pang H, Liu L, Zhu Z, Shang E, Huang S, Sun D, Duan JA. Herb pairs containing *Angelicae Sinensis Radix* (Danggui): a review of bio-active constituents and compatibility effects. *J Ethnopharmacol* 2016;181:158-71. [PUBMED](#) | [CROSSREF](#)
23. Jiang M, Zhao S, Yang S, Lin X, He X, Wei X, Song Q, Li R, Fu C, Zhang J, et al. An "essential herbal medicine"-licorice: a review of phytochemicals and its effects in combination preparations. *J Ethnopharmacol* 2020;249:112439. [PUBMED](#) | [CROSSREF](#)
24. Shang H, Zhang B, Wang Y, Gao X, Zhao Y. A method for proportion screening of TCM small prescriptions. *Chin J Exp Tradit Med Formulae* 2003;3:1-3.
25. Sheng YM, Chen L, Xie XL. Optimization of the best ratio of Astragalus polysaccharide and Astragalus saponin for immunomodulation based on increase-decrease baseline geometric proportion design method. *Chin J Hosp Pharm* 2016;36:59-62.
26. Chen CC, Qin XM, Du GH, Zhou YZ. The "compatible art" of effective components from traditional Chinese medicine: research on the compatibility and proportion of effective components. *Acta Pharm Sinica* 2019;54:808-17.
27. Mani V, Lee SK, Yeo Y, Hahn BS. A metabolic perspective and opportunities in pharmacologically important safflower. *Metabolites* 2020;10:253. [PUBMED](#) | [CROSSREF](#)
28. Akhtar U, Wankhade AM, Vyas JV, Paithankar VV. A review on: phytoconstituents, traditional and medicinal uses of *Taraxacum officinale* (Dandelion). *J Pharmacogn Phytochem* 2023;15:139-44. [CROSSREF](#)
29. Mahboubi M, Mahboubi M. Hepatoprotection by dandelion (*Taraxacum officinale*) and mechanisms. *Asian Pac J Trop Biomed* 2020;10:1-10. [CROSSREF](#)
30. Kim JH, He MT, Kim MJ, Yang CY, Shin YS, Yokozawa T, Park CH, Cho EJ. Safflower (*Carthamus tinctorius* L.) seed attenuates memory impairment induced by scopolamine in mice via regulation of cholinergic dysfunction and oxidative stress. *Food Funct* 2019;10:3650-9. [PUBMED](#) | [CROSSREF](#)
31. Kim EJ, Jung IH, Van Le TK, Jeong JJ, Kim NJ, Kim DH. Ginsenosides Rg5 and Rh3 protect scopolamine-induced memory deficits in mice. *J Ethnopharmacol* 2013;146:294-9. [PUBMED](#) | [CROSSREF](#)
32. Montgomery KC. A test of two explanations of spontaneous alternation. *J Comp Physiol Psychol* 1952;45:287-93. [PUBMED](#) | [CROSSREF](#)
33. Bevins RA, Besheer J. Object recognition in rats and mice: a one-trial non-matching-to-sample learning task to study 'recognition memory'. *Nat Protoc* 2006;1:1306-11. [PUBMED](#) | [CROSSREF](#)
34. Barmak MJ, Nouri E, Shahraki MH, Ghalamfarsa G, Zibara K, Delaviz H, Ghanbari A. Safflower seed oil, a rich source of linoleic acid, stimulates hypothalamic neurogenesis *in vivo*. *Anat Cell Biol* 2023;56:219-27. [PUBMED](#) | [CROSSREF](#)
35. Liang Y, Wang L. *Carthamus tinctorius* L.: a natural neuroprotective source for anti-Alzheimer's disease drugs. *J Ethnopharmacol* 2022;298:115656. [PUBMED](#) | [CROSSREF](#)
36. He MT, Kim JH, Kim JH, Park CH, Cho EJ. Combination of *Carthamus tinctorius* L. seed and *Taraxacum coreanum* exerts synergistic effects on learning and memory function by regulating metabolism of amyloid beta in mice. *J Funct Foods* 2020;72:104048. [CROSSREF](#)
37. Dongare PN, Kadu TB, Pohane AL, Dighade SJ, Patil PG. Review on Pharmacognosy, phytochemistry and pharmacological activity of *Taraxacum officinale* (Dandelion plant). *World J Adv Res Rev* 2021;12:212-8. [CROSSREF](#)

38. Jalili C, Taghadosi M, Pazhouhi M, Bahrehmand F, Miraghaee SS, Pourmand D, Rashidi I. An overview of therapeutic potentials of *Taraxacum officinale* (dandelion): a traditionally valuable herb with a reach historical background. *World Cancer Res J* 2020;7:e1679.
39. Yoon CS, Ko W, Lee DS, Kim DC, Kim J, Choi M, Beom JS, An RB, Oh H, Kim YC. *Taraxacum coreanum* protects against glutamate-induced neurotoxicity through heme oxygenase-1 expression in mouse hippocampal HT22 cells. *Mol Med Rep* 2017;15:2347-52. [PUBMED](#) | [CROSSREF](#)
40. Lee AY, Yamabe N, Kang KS, Kim YH, Lee S, Cho EJ. Cognition and memory function of *Taraxacum coreanum* in an in vivo amyloid- $\beta$ -induced mouse model of Alzheimer's disease. *Arch Biol Sci* 2014;66:1357-66. [CROSSREF](#)
41. Sohn MK, Shin YW. A comparative study of memory improving effects of *Taraxaci* Herba on scopolamine-induced amnesia in mouse. *Kor J Herbology* 2012;27:27-35. [CROSSREF](#)
42. van Asselen M, Kessels RP, Neggers SF, Kappelle LJ, Frijns CJ, Postma A. Brain areas involved in spatial working memory. *Neuropsychologia* 2006;44:1185-94. [PUBMED](#) | [CROSSREF](#)
43. Falsafi SK, Deli A, Höger H, Pollak A, Lubec G. Scopolamine administration modulates muscarinic, nicotinic and NMDA receptor systems. *PLoS One* 2012;7:e32082. [PUBMED](#) | [CROSSREF](#)
44. Antonova E, Parslow D, Brammer M, Simmons A, Williams S, Dawson GR, Morris R. Scopolamine disrupts hippocampal activity during allocentric spatial memory in humans: an fMRI study using a virtual reality analogue of the Morris Water Maze. *J Psychopharmacol* 2011;25:1256-65. [PUBMED](#) | [CROSSREF](#)
45. Yamazaki M, Okabe M, Yamamoto N, Yarimizu J, Harada K. Novel 5-HT<sub>2A</sub> receptor antagonists ameliorate scopolamine-induced working memory deficit in mice and reference memory impairment in aged rats. *J Pharmacol Sci* 2015;127:362-9. [PUBMED](#) | [CROSSREF](#)
46. Antunes M, Biala G. The novel object recognition memory: neurobiology, test procedure, and its modifications. *Cogn Process* 2012;13:93-110. [PUBMED](#) | [CROSSREF](#)
47. Can MV, Tran AH, Pham DM, Dinh BQ, Le QV, Nguyen BV, Nguyen MT, Nguyen HX, Nguyen NT, Nishijo H. *Willughbeia cochinchinensis* prevents scopolamine-induced deficits in memory, spatial learning, and object recognition in rodents. *J Ethnopharmacol* 2018;214:99-105. [PUBMED](#) | [CROSSREF](#)
48. Brown MW, Aggleton JP. Recognition memory: what are the roles of the perirhinal cortex and hippocampus? *Nat Rev Neurosci* 2001;2:51-61. [PUBMED](#) | [CROSSREF](#)
49. Lee YK, Yuk DY, Kim TI, Kim YH, Kim KT, Kim KH, Lee BJ, Nam SY, Hong JT. Protective effect of the ethanol extract of *Magnolia officinalis* and 4-O-methylhonokiol on scopolamine-induced memory impairment and the inhibition of acetylcholinesterase activity. *J Nat Med* 2009;63:274-82. [PUBMED](#) | [CROSSREF](#)
50. Deng G, Wu C, Rong X, Li S, Ju Z, Wang Y, Ma C, Ding W, Guan H, Cheng X, et al. Ameliorative effect of deoxyvasicine on scopolamine-induced cognitive dysfunction by restoration of cholinergic function in mice. *Phytomedicine* 2019;63:153007. [PUBMED](#) | [CROSSREF](#)
51. Choi SH, Lee AY, Park CH, Shin YS, Cho EJ. Protective effect of *Carthamus tinctorius* L. seed on oxidative stress and cognitive impairment induced by chronic alcohol consumption in mice. *Food Sci Biotechnol* 2018;27:1475-84. [PUBMED](#) | [CROSSREF](#)
52. Kwon Y, Park HJ, Shin BY, Ryu JH. Ameliorating effect of *Taraxacum platycarpum* extract in the scopolamine-induced cholinergic blockade mouse model. *Korean J Pharmacogn* 2017;48:119-24.
53. Ahmad A, Ramasamy K, Jaafar SM, Majeed AB, Mani V. Total isoflavones from soybean and tempeh reversed scopolamine-induced amnesia, improved cholinergic activities and reduced neuroinflammation in brain. *Food Chem Toxicol* 2014;65:120-8. [PUBMED](#) | [CROSSREF](#)
54. Li SP, Wang YW, Qi SL, Zhang YP, Deng G, Ding WZ, Ma C, Lin QY, Guan HD, Liu W, et al. Analogous  $\beta$ -carboline alkaloids harmaline and harmine ameliorate scopolamine-induced cognition dysfunction by attenuating acetylcholinesterase activity, oxidative stress, and inflammation in mice. *Front Pharmacol* 2018;9:346. [PUBMED](#) | [CROSSREF](#)
55. Agostinho P, Cunha RA, Oliveira C. Neuroinflammation, oxidative stress and the pathogenesis of Alzheimer's disease. *Curr Pharm Des* 2010;16:2766-78. [PUBMED](#) | [CROSSREF](#)
56. Aktan F. iNOS-mediated nitric oxide production and its regulation. *Life Sci* 2004;75:639-53. [PUBMED](#) | [CROSSREF](#)
57. Khurana K, Kumar M, Bansal N. Lacidipine prevents scopolamine-induced memory impairment by reducing brain oxido-nitrosative stress in mice. *Neurotox Res* 2021;39:1087-102. [PUBMED](#) | [CROSSREF](#)
58. Lee JS, Kim HG, Lee HW, Han JM, Lee SK, Kim DW, Saravanakumar A, Son CG. Hippocampal memory enhancing activity of pine needle extract against scopolamine-induced amnesia in a mouse model. *Sci Rep* 2015;5:9651. [PUBMED](#) | [CROSSREF](#)
59. Khan AA, Iadarola M, Yang HY, Dionne RA. Expression of COX-1 and COX-2 in a clinical model of acute inflammation. *J Pain* 2007;8:349-54. [PUBMED](#) | [CROSSREF](#)

60. Cui J, Jia J. Natural COX-2 inhibitors as promising anti-inflammatory agents: an update. *Curr Med Chem* 2021;28:3622-46. [PUBMED](#) | [CROSSREF](#)
61. Xian YF, Ip SP, Mao QQ, Su ZR, Chen JN, Lai XP, Lin ZX. Honokiol improves learning and memory impairments induced by scopolamine in mice. *Eur J Pharmacol* 2015;760:88-95. [PUBMED](#) | [CROSSREF](#)
62. Cho BJ, Kim M, Song YO. Effects of root of *Taraxacum coreanum* Nakai on the inhibition of inflammation and oxidative stress induced by lipopolysaccharide in ICR Mice. *J Korean Soc Food Sci Nutr* 2015;44:1763-70. [CROSSREF](#)
63. Kassubek R, Gorges M, Schocke M, Hagenston VA, Huss A, Ludolph AC, Kassubek J, Tumani H. GFAP in early multiple sclerosis: a biomarker for inflammation. *Neurosci Lett* 2017;657:166-70. [PUBMED](#) | [CROSSREF](#)
64. Memudu AE, Adewumi AE. Alpha lipoic acid ameliorates scopolamine induced memory deficit and neurodegeneration in the cerebello-hippocampal cortex. *Metab Brain Dis* 2021;36:1729-45. [PUBMED](#) | [CROSSREF](#)
65. Konar A, Shah N, Singh R, Saxena N, Kaul SC, Wadhwa R, Thakur MK. Protective role of *Ashwagandha* leaf extract and its component withanone on scopolamine-induced changes in the brain and brain-derived cells. *PLoS One* 2011;6:e27265. [PUBMED](#) | [CROSSREF](#)
66. Pereira JB, Janelidze S, Smith R, Mattsson-Carlgrén N, Palmqvist S, Teunissen CE, Zetterberg H, Stomrud E, Ashton NJ, Blennow K, et al. Plasma GFAP is an early marker of amyloid- $\beta$  but not tau pathology in Alzheimer's disease. *Brain* 2021;144:3505-16. [PUBMED](#) | [CROSSREF](#)
67. Oeckl P, Anderl-Straub S, Von Arnim CA, Baldeiras I, Diehl-Schmid J, Grimmer T, Halbgebauer S, Kort AM, Lima M, Marques TM, et al. Serum GFAP differentiates Alzheimer's disease from frontotemporal dementia and predicts MCI-to-dementia conversion. *J Neurol Neurosurg Psychiatry* 2022;93:659-67. [PUBMED](#) | [CROSSREF](#)
68. Liu Q, Chen Y, Shen C, Xiao Y, Wang Y, Liu Z, Liu X. Chicoric acid supplementation prevents systemic inflammation-induced memory impairment and amyloidogenesis *via* inhibition of NF- $\kappa$ B. *FASEB J* 2017;31:1494-507. [PUBMED](#) | [CROSSREF](#)
69. Naveed M, Hejazi V, Abbas M, Kamboh AA, Khan GJ, Shumzaid M, Ahmad F, Babazadeh D, FangFang X, Modarresi-Ghazani F, et al. Chlorogenic acid (CGA): a pharmacological review and call for further research. *Biomed Pharmacother* 2018;97:67-74. [PUBMED](#) | [CROSSREF](#)
70. Kwon SH, Lee HK, Kim JA, Hong SI, Kim HC, Jo TH, Park YI, Lee CK, Kim YB, Lee SY, et al. Neuroprotective effects of chlorogenic acid on scopolamine-induced amnesia via anti-acetylcholinesterase and anti-oxidative activities in mice. *Eur J Pharmacol* 2010;649:210-7. [PUBMED](#) | [CROSSREF](#)
71. Mohammad-Zadeh LF, Moses L, Gwaltney-Brant SM. Serotonin: a review. *J Vet Pharmacol Ther* 2008;31:187-99. [PUBMED](#) | [CROSSREF](#)
72. Sakamura S, Terayama Y, Kawakatsu S, Ichihara A, Saito H. Conjugated serotonins and phenolic constituents in safflower seed (*Carthamus tinctorius* L.). *Agric Biol Chem* 1980;44:2951-4. [CROSSREF](#)
73. He M, Park C, Shin Y, Kim J, Cho E. *N*-feruloyl serotonin attenuates neuronal oxidative stress and apoptosis in A $\beta_{25-35}$ -treated human neuroblastoma SH-SY5Y cells. *Molecules* 2023;28:1610. [PUBMED](#) | [CROSSREF](#)
74. Kim DH, Moon YS, Park TS, Son JH. Serotonins of safflower seeds play a key role in anti-inflammatory effect in lipopolysaccharide-stimulated RAW 264.7 macrophages. *J. Plant Biotechnol* 2015;42:364-9. [CROSSREF](#)
75. Jung ES, Kim SB, Kim MH, Shin SW, Lee JS, Park DH. Inhibitory effects of serotonin derivatives on adipogenesis. *J Soc Cosmet Sci Korea* 2011;37:171-6.
76. Carola C, Salazar A, Rakers C, Himbert F, Do QT, Bernard P, von Hagen J. A Cornflower extract containing *N*-feruloylserotonin reduces inflammation in human skin by neutralizing CCL17 and CCL22 and inhibiting COX-2 and 5-LOX. *Mediators Inflamm* 2021;2021:6652791. [PUBMED](#) | [CROSSREF](#)
77. Han SJ, Lim MJ, Lee KM, Oh E, Shin YS, Kim S, Kim JS, Yun SP, Kang LJ. Safflower seed extract attenuates the development of osteoarthritis by blocking NF- $\kappa$ B signaling. *Pharmaceuticals (Basel)* 2021;14:258. [PUBMED](#) | [CROSSREF](#)
78. Gottlieb A, Keydar I, Epstein HT. Rodent brain growth stages: an analytical review. *Biol Neonate* 1977;32:166-76. [PUBMED](#) | [CROSSREF](#)
79. Chen VS, Morrison JP, Southwell MF, Foley JF, Bolon B, Elmore SA. Histology atlas of the developing prenatal and postnatal mouse central nervous system, with emphasis on prenatal days E7.5 to E18.5. *Toxicol Pathol* 2017;45:705-44. [PUBMED](#) | [CROSSREF](#)
80. Ciceri G, Baggolini A, Cho HS, Kshirsagar M, Benito-Kwiecinski S, Walsh RM, Aromolaran KA, Gonzalez-Hernandez AJ, Munguba H, Koo SY, et al. An epigenetic barrier sets the timing of human neuronal maturation. *Nature* 2024;626:881-90. [PUBMED](#) | [CROSSREF](#)
81. Guo L, Xiong H, Kim JI, Wu YW, Lalchandani RR, Cui Y, Shu Y, Xu T, Ding JB. Dynamic rewiring of neural circuits in the motor cortex in mouse models of Parkinson's disease. *Nat Neurosci* 2015;18:1299-309. [PUBMED](#) | [CROSSREF](#)