



Growth performance, non-specific immune activity, and resistance against *Vibrio parahaemolyticus* of whiteleg shrimp fed dietary *Chromolaena odorata* leaf flour components

Harlina Harlina^{1,*}, Rosmiati Rosmiati², Andi Hamdillah¹, Syahrul Syahrul¹, Yosie Andriani³

¹ Aquaculture Study Program, Faculty of Fisheries and Marine Sciences, Universitas Muslim Indonesia, Makassar 90121, Indonesia

² Research Center for Fisheries, National Research and Innovation Agency, Bogor 16911, Indonesia

³ Institute of Climate Adaptation and Marine Biotechnology, Universiti Malaysia Terengganu, Terengganu 21030, Malaysia

Abstract

The efficacy of *Chromolaena odorata* leaf flour components (CO) to increase the growth performance, non-specific immune activity, and resistance against *Vibrio parahaemolyticus* of whiteleg shrimp (*Litopenaeus vannamei*) culture was evaluated. To this purpose, whiteleg shrimp post larvae were fed on diets supplemented with 0 and a 1.5 g CO/kg diet for 45 days in a pond. After feeding trials, the shrimps were identified for their growth parameters, collected, and injected with *V. parahaemolyticus*, then their non-specific immune activity and resistance to *V. parahaemolyticus* was observed for 14 days. Findings showed that CO increased the average body weight (7.71 g, 37%), weight gain (7.69 g, 40%), and specific growth rate (13.23%/day, 5.7%) as compared to the control. In addition, CO supplementation also increases shrimp's hematologic and immune activity (total hemocyte counts [6.8×10^7 CFU/mL, 242.9%], differential hemocyte counts [27%, 142.1%], and prophenoloxidase activity [0.085%, 566.7%]). Finally, shrimp resistance to *V. parahaemolyticus* infection also increased after CO supplementation, with survival rates of 73.33% as compared to 23.33% for the control. It suggests that *C. odorata* leaf flour component supplementation at an optimal dose in the diet may be an effective strategy to increase growth and resistance to bacterial disease with reduced mortality in shrimp farms.

Keywords: Acute Hepatopancreatic Necrosis Disease (AHPND), *Chromolaena odorata*, Immune response, *Litopenaeus vannamei*, *Vibrio parahaemolyticus*

Received: Jan 3, 2024 Revised: Feb 24, 2024 Accepted: Mar 10, 2024

*Corresponding author: Harlina Harlina

Aquaculture Study Program, Faculty of Fisheries and Marine Sciences, Universitas Muslim Indonesia, Makassar 90121, Indonesia

Tel: +62-81243868134, E-mail: harlina.harlina@umi.ac.id

This is an Open Access article distributed under the terms of the Creative Commons Attribution Non-Commercial License (<http://creativecommons.org/licenses/by-nc/4.0/>) which permits unrestricted non-commercial use, distribution, and reproduction in any medium, provided the original work is properly cited.

Copyright © 2024 The Korean Society of Fisheries and Aquatic Science

Introduction

The whiteleg shrimp, *Litopenaeus vannamei*, is a widely cultured species of high economic value. The whiteleg shrimp is very popular because of its high-quality meat, good taste, good nutritional content, and easy cooking (Li et al., 2021). Whiteleg shrimp is also one of the most successful cultured species in aquaculture, accounting for up to 80% of shrimp production (Rosilan et al., 2023). Whiteleg shrimp has been cultivated with intensive to super-intensive technology (Mustafa et al., 2023).

However, whiteleg shrimp have several challenges from various diseases, including Acute Hepatopancreatic Necrosis Disease (AHPND), a bacterial disease also known as Early Mortality Syndrome (EMS) (Rosilan et al., 2023). AHPND has caused significant economic losses for shrimp (Ha et al., 2023). *Vibrio parahaemolyticus* is a well-known causative agent of AHPND in penaeid shrimp farming worldwide (Velázquez-Lizárraga et al., 2019). *V. parahaemolyticus*, a Gram-negative bacterium that lives in marine and estuary environments, becomes pathogenic in shrimp at concentrations greater than 10^4 CFUs/mL (Soto-Rodriguez et al., 2022).

The use of immunostimulants to enhance immune responses is one of the important steps that can be taken to prevent disease in shrimp aquaculture (Kumar et al., 2022). Immunostimulants are substances that can activate or enhance the activity of the immune system, used to help the body's immune response in combating infections (Di Sotto et al., 2020). Immunostimulants are considered an attractive and promising agent for preventing diseases in fish and shellfish. Increasing the ability of shrimp bodies to fight disease by administering immunostimulants can be indicated by several parameters, including prophenoloxidase (proPO), total hemocyte counts (THC), and differential hemocyte counts (DHC). When selecting these therapeutic agents, it's important to think about the safety of consumers, the environment, and the shrimp.

Immunostimulants derived from plants are organic, free from side effects, environmentally friendly, and safe to use to improve the immune system of shrimp (Kumar et al., 2022). *C. odorata*, also known as Siam weed (Eze & Jayeoye, 2021) is a rapidly growing perennial herb that can grow up to 2.5 m (100 inches) tall in open areas and up to 10 m (33 feet) tall in shady areas where it behaves as a creeper, growing on other vegetation. When crushed, the plant is hairy and glandular; the leaves give off a pungent, aromatic odor. Some of the benefits of *C. odorata* are that it can improve soil fertility, crop production, protection,

nutrition, and ethnopharmacology (Mugwedi, 2020). *C. odorata* has been reported to have antibacterial, anti-inflammatory, antioxidant, anthelmintic, antifungal, cytotoxic, anticonvulsant, antiprotozoal, and wound-healing properties (Mugwedi, 2020). This antioxidant and antibacterial property could help protect aquatic animals from oxidative stress and bacterial infection caused by environmental factors (Eze & Jayeoye, 2021).

Different plant seasons or life cycle stages can give different results in analyzing bioactive compounds. The leaves of *C. odorata* contain phytochemicals such as tannins, alkaloids, flavonoids, saponins, terpenoids and other phenolic compounds, which produce a physiological action in the body (Rasyid et al., 2020; Zahara, 2019). The presence of these components in *C. odorata* leaf extract has shown that it can be a source of immunostimulant to improve shrimp antibacterial activity. Various factors, including the environmental condition, can influence shrimp's growth and immune response. In the earlier study, in controlled testing, *C. odorata* leaf flour components (CO) enhanced immune responses and Survival Rate (SR) in tiger shrimp infected with *V. harveyi* (Harlina et al., 2019). However, the impact of CO use in improving the growth and health of farm-farmed whiteleg shrimp *L. vannamei* is still an area of research that has not been revealed. Thus, this study examines the effectiveness of CO at the optimal dose to increase the growth performance, non-specific immune activity, and resistance against *V. parahaemolyticus* of whiteleg shrimp *L. vannamei* culture in the pond.

Materials and Methods

Sample preparation

The old leaves of *C. odorata* were collected in the rainy season around a pond in Marana Village, Maros, Indonesia. followed by cleaning under running water and then cut into small cube-like pieces. The resulting leaf pieces were then dried using a drying cabinet at 40 °C. The dried leaves were then turned into flour with the help of a kitchen blender. The leaf flour was then divided into two parts; some were used for phytochemical tests, while the other was mixed into feed as part of experiments.

Phytochemical test

Approximately 10 g of *C. odorata* leaf flour was extracted with 200 mL of methanol (MeOH) while stirring using a shaker for 24 hours at room temperature. The MeOH extract was filtered using Whatman No.4 filter paper. The MeOH extract was then

concentrated using a rotary evaporator set at 37 °C to obtain concentrated MeOH extract. Phytochemical tests were conducted to confirm the uniformity of compound content in *C. odorata* leaves used in this study with compound content in *C. odorata* leaves that had been investigated previously (Harlina et al., 2013). The components present were identified through the observation of color changes or the formation of visually visible deposits.

The flavonoid analysis involved combining 1–2 mL of warm 50% MeOH with 1 mL of MeOH extract, then introducing magnesium and 0.5 mL of concentrated hydrochloric acid. The presence of flavonoids was indicated by the appearance of an orange color. Dragendorff's and Mayer's tests were performed for alkaloid detection. A mixture was created by combining 1 mL of MeOH extract with 0.5 mL of 2% hydrochloric acid. The resultant acidic solution was subsequently divided into two tubes. In Tube I, three drops of Dragendorff solution were added, while in Tube II, three drops of Mayer solution were introduced. Verification of the existence of alkaloids was established through the observation of a red or orange residue in Tube I and a whitish precipitate in Tube II. In terpenoid testing, MeOH extract (1 mL) was mixed with 0.5 mL of chloroform and then added with 0.5 mL of anhydrous acetic acid. After that, the mixture was carefully fed into a test tube with 1–2 mL of concentrated H₂SO₄, which presents a brownish or purple ring if triterpenoids are present.

After that, the mixture was carefully poured into a test tube, and 1–2 mL of concentrated H₂SO₄ was added. The Liebermann-Burchard reagent was used to test the presence of steroids by mixing MeOH (1 mL) with n-hexane (2 mL) and allowed to stand until two layers formed. The n-hexane layer was removed, and five drops of Liebermann-Burchard reagent were added. The presence of blue color indicated the presence of steroids. Saponins were identified through the combination of 2 mL of MeOH extract with 2 mL of distilled water, followed by allowing the mixture to stand for one minute. The addition of two drops of 1 N hydrochloric acid was performed, and the presence of saponins in the MeOH leaf extract was confirmed if foam developed and remained stable for 10 minutes.

Experimental diets

The diet preparation and proximate composition process were explained elsewhere in Table 1. CO leaf powder was added to diets in the optimal dose (1.5 g/kg diet). This optimal dose was chosen based on the earlier study on tiger shrimp with a dietary

Table 1. The Basal ingredients and proximate composition of experimental diet

Ingredients	Treatments	
	Control diet (T1)	CO supplementation diet (T2)
Fish flour (%)	40	40
Shrimp head flour (%)	10	10
Copra cake (%)	9	9
Corn flour (%)	12	12
Soybean flour (%)	17	17
Wheat flour (%)	10	10
Vitamin and minerals (%)	2	2
<i>Chromolaena odorata</i> leaves (g/kg feed)	0	1.5
Total (%)	100	100
Proximate composition		
Crude protein (%)	38.31	38.31
Crude lipid (%)	9.27	9.27
Crude fibre (%)	4.52	4.52
Ash content (%)	12.48	12.48
NFE (%)	32.86	32.86
Total energy (kcal/kg feed)	1,646	1,646

NFE, nitrogen free extract.

proximate composition consisting of crude protein (38.21%), crude lipids (9.7%), crude fiber (4.52%), crude ash (12.48%), nitrogen-free extracts (32.86%), and total energy (16.46 kcal/kg).

Shrimp and husbandry trial

This experiment was done at the farmer's pond in Bonto Lengkasa Village, Pangkep Regency, South Sulawesi, Indonesia. Post larvae (PL) shrimp in size 0.02 ± 0.02 g were purchased from a local hatchery. Then, shrimp was distributed to experimental ponds (500 m²) (170 shrimp/m², duplicate) (Purnamasari et al., 2017). The stocking of PL was carried out in the morning, which begins with the acclimatization of PL first, especially at temperature and salinity. Once the temperature and salinity of the water within the PL plastic bag were either equivalent or exhibited minimal variation compared to the pond water, the gradual introduction of PL into the experimental ponds could be initiated. The shrimp were fed with a control and treatment diet for 45 days, followed by control feeding on both treatments, handed over to local farmers, and observation stopped. Before being used, the intensive ponds were prepared in accordance with the established procedures outlined in the REBAFE standard operating protocols. The trial feeding of 3% of body weight

was carried out twice daily in the morning and evening for 45 days.

Growth performance

The shrimp were separately sampled to determine the shrimp growth performance during feeding. The collection of shrimp samples was conducted utilizing anchovy sampling technique. Anchovy sampling ($n = 30$) was conducted in the morning on the 45th day of the rearing period. Growth performance was evaluated by the following parameters: average body weight (ABW) (g) was measured by weighing the body weight of the sampling shrimp. Weight gain (g) = $w_t - w_0$, SGR (%/day) = $100 \% \times ([\ln w_t - \ln w_0] / t)$ where w_0 is the initial mean body weight (g), w_t is the sampling mean body weight (g), while t is rearing time (day).

Challenge test with *Vibrio parahaemolyticus*

Whiteleg shrimp that had been given a control diet (T1) and those fed a CO-supplemented diet (T2) for 45 days in the ponds were challenged with *V. parahaemolyticus* for 14 days. The shrimps from groups T1 and T2 were respectively selected 80 individuals each with an average weight of 7.0 ± 0.02 g and randomly assigned to control group (T1) and treatment group (T2) to evaluate the effects of CO on *V. parahaemolyticus* infection in shrimp. The experiment was conducted in eight rectangular plastic tanks ($80 \times 57 \times 42$ cm, capacity 150 L), each containing 20 shrimp. Each type of treatment was carried out four times (three for immune response and one for survival observation). The Fish Health and Management Lab of the Research Institute for Brackishwater Aquaculture and Fisheries Extension in Maros, Indonesia, supplied the pathogenic bacterium *V. parahaemolyticus* for the study. Determination of the density of *V. parahaemolyticus* reaching 10^4 CFUs/mL referred to Abdel-Tawwab et al. (2021) method. Whiteleg shrimps were infected with *V. parahaemolyticus* by injecting 0.1 mL intramuscularly into the ventral sinus. During the challenge test, the experimental diets were given twice daily in the morning and evening as much as 3% of body weight. To investigate how CO affect the growth of *V. parahaemolyticus*, the population of *V. parahaemolyticus* in the shrimp was determined using thiosulfate citrate bile sucrose agar media at 3, 6, 12, 24, and 48 hours after the challenge test.

Observation of immune responses and survival rate

Hemolymph samples were gathered both prior to the challenge test and at specific intervals post-challenge, specifically on the

2nd, 4th, 8th, and 14th days. The daily monitoring of the SR of whiteleg shrimp was conducted throughout the challenge test. The calculation of SR was performed using the formula as documented by Herawati et al. (2020). Prior to hemolymph collection, the shrimp were subjected to cold anesthesia. Hemolymph retrieval followed guidelines provided by Morales-Covarrubias et al. (2023) by using an anticoagulant solution instead of the modified alsever solution. The anticoagulant solution (100 μ L) was inserted into a sterile syringe with a capacity of 1 mL. Then, with caution, the anticoagulant was mixed with hemolymph by taking 100 μ L of hemolymph from the shrimp ventral sinuses on the base of the first abdominal segment. After hemolymph retrieval, the ventral sinus area of the shrimp was cleaned with a cotton swab that was soaked in 70% ethanol to prevent contamination. A mixture of hemolymph and anticoagulant (1:1) was placed in a 1.5 mL microcentrifuge tube by gently pipette up and down to prevent cell clumping. Next, trypan blue (0.5% in 2.6% NaCl) was used to dilute hemocytes. Hemocytes were examined under a light microscope (DP21, Olympus, Tokyo, Japan) at 10 \times magnification, employing a hemocytometer and introducing 10 μ L of a diluted hemolymph sample. The THC (Fig. 1) was calculated according to the formula proposed by Braak (2002).

To calculate DHC, a microscope glass slide was prepared, and then 20 μ L hemolymph from each shrimp (the remaining hemolymph was used to calculate THC) was placed on the slide. Hemocytes were allowed to flatten themselves and dry at room temperature, washed with pure MeOH for 15 minutes, and dried again at room temperature. Next, hemocytes were stained with Giemsa-Rosenfeld as much as 10%. Slide cleaning was carried out under running water for 30 seconds. Following the drying process, the slides were employed for the morphological characterization of distinct hemocyte types, as outlined by Chang & Chang (2022), utilizing a light microscope (DP21, Olympus) at a magnification of 40 \times . Diverse shrimp hemocytes, including hyaline, granular, and semi-granular, were recognized and quantified using the methodology described by Braak (2002). The DHC result (Fig. 2) was then calculated as the average of each hemocyte type in the total cells counted.

The activity of proPO was measured with the help of a spectrophotometer. L-dihydroxyphenylalanine was used as the base material to record dopachrome formation. To perform a proPO test, the following steps were performed. First, the prepared 100 μ L of hemolymph was separated by centrifugation at 7000 rpm for 20 minutes at 40 $^{\circ}$ C, and the supernatant was

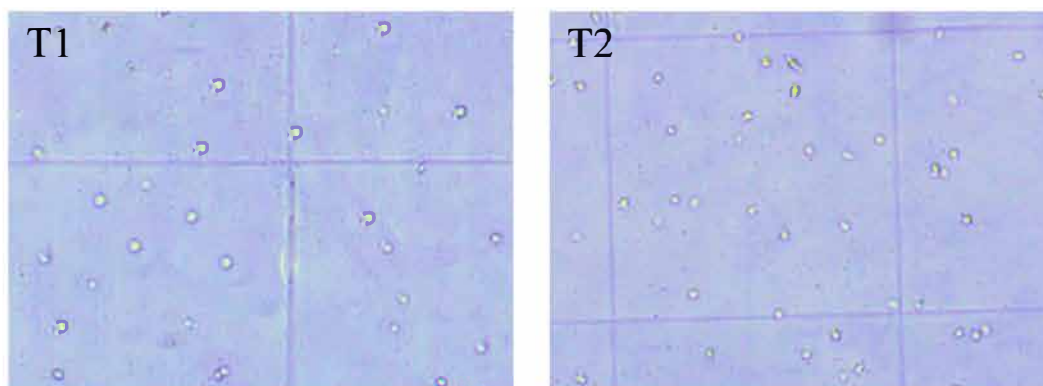


Fig. 1. Hemocyte counts image of control diet (T1) and CO supplementation diet (T2) (original magnification 10x).

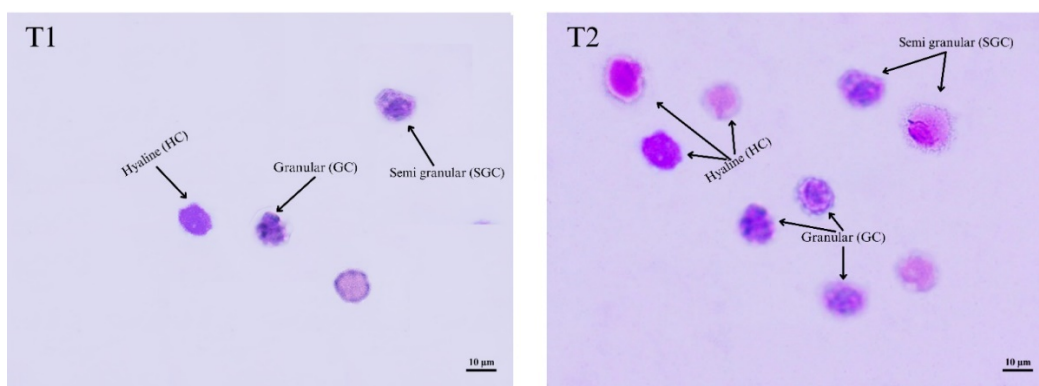


Fig. 2. Different shapes of hemocytes of the control diet (T1) and CO supplementation diet (T2) (original magnification x40).

discarded. Then, a hemolymph precipitate was added to 100 µL of cacodylate citrate buffer solution (0.1 M $C_2H_{12}AsNaO_5$, 0.45 M NaCl, and 0.01 M $Na_3C_6H_5O_7$) and then separated again in the same way. Next, the precipitate was resuspended in cacodylate buffer (100 µL) and homogenized. After that, 100 µL of the mixture was piped into a 96-well microplate (R-BioPharm AG, Darmstadt, Germany) and mixed with 100 µL of trypsin (Sigma-Aldrich, St. Louis, MO, USA). The mixture was then suspended and incubated at 25°C for 10 minutes. Enzymatic activity was measured by comparing the dopachrome's absorbance and blanks containing trypsin (200 µL) and l-DOPA (50 µL, containing 1 mg/mL trypsin) at a wavelength of 490 nm.

Water quality observation

During the experimental period, salinity, pH, Dissolved Oxygen (DO), and water temperature were measured every 10 days of the feeding trial at 08:00–10:00 Indonesian time using YSI

6920 V2-2 Multiparameter Water Quality Sonde (YSI, Yellow Springs, OH, USA).

Data analysis

Growth parameters, immune response (THC and proPO activity), and SR were evaluated through t-student test analysis using SPSS software version 20.0 (SPSS, IBM, Chicago, IL, USA) at a confidence level of 0.05 ($p < 0.05$), while DHC and water quality were presented in descriptive form. All Figures were reorganized using a Graphpad Prism versi 10 (GraphPad Software, San Diego, CA, USA).

Results

Phytochemical identification

The examination of phytochemical constituents confirmed the presence of flavonoids, alkaloids, triterpenoids, and steroids in

the leaves of *C. odorata*. However, the MeOH extracts of *C. odorata* leaves did not exhibit the presence of saponins, as indicated in Table 2.

Growth parameters

This experiment showed that dietary CO supplementation had a positive impact in increasing the growth of whiteleg shrimp. Significant improvements ($p < 0.05$) in all growth parameters tested (Table 3) were shown by shrimp fed a CO-supplemented diet compared to shrimp fed a control diet after 45 days of feeding experiments with ABW of 7.71 ± 0.24 and 5.61 ± 0.22 g, respectively. A higher SGR of $13.23 \pm 0.14\%$ was noted in shrimp fed a CO-supplemented diet (T2), but a relatively low SGR ($12.52 \pm 0.17\%$) was recorded in shrimp fed a control diet (T1). The growth parameters measured were ABW, weight gain, and SGR. It suggests that CO can be used to improve the growth of whiteleg shrimp.

Water quality

Based on the supplied data, the water quality obtained during the feeding trial was normal for whiteleg shrimp *L. vannamei* growth in the pond. The water quality measured consisting of salinity (ppt), pH, temperature ($^{\circ}\text{C}$), and DO (ppm) was summarized in Table 4.

Vibrio parahaemolyticus population

The treatment with CO (T2) had a significant impact on the growth of *V. parahaemolyticus* in the shrimp. As shown in Fig.

3, the population of *V. parahaemolyticus* ($n = 3$) in the shrimp fed a CO-supplemented diet exhibited a continuous decrease over time. After 48 hours of the challenge test, the population of *V. parahaemolyticus* decreased by 45.58%. In contrast, in the control group (T1), the population of *V. parahaemolyticus* in shrimp also experienced a decrease up to 6 hours after the challenge test, followed by an increase reaching its peak after 12 hours of the challenge test, and subsequently declined again but remained higher than the initial bacterial population.

Total haemocyte counts (THC)

THC is a useful tool for assessing the health status of shrimp in aquaculture (Morales-Covarrubias et al., 2023). Fig. 4 shows

Table 4. The overall and range values (minimum, maximum) of water quality parameters of experimental diets during the 45-day rearing time (means \pm SD, $n = 3$)

Parameter	T1	T2	The suitable value
Salinity (ppt)	22.5 ± 0.1 (20.1, 25.0)	23.1 ± 0.1 (20.1, 25.1)	10–25
pH	7.81 ± 0.05 (7.53, 8.43)	7.75 ± 0.01 (7.54, 8.13)	7.5–8.5
Temperature ($^{\circ}\text{C}$)	27.9 ± 0.06 26.5, 29.9	27.8 ± 0.07 26.4 \pm 29.9	20–30
DO (ppm)	7.83 ± 0.05 (7.39, 8.13)	7.67 ± 0.09 (7.47, 7.91)	5–20

T1, control diet; T2, CO-supplemented diet.

Adapted from Nguyen et al. (2002) with CC-BY-NC.

Table 2. Result of phytochemical test of *Chromolaena odorata* L. methanol extract

Methanol extract	Flavonoid	Alkaloid		Triterpenoid	Steroid	Saponin
		Dragendorff	Meyer			
<i>C. odorata</i> L.	+	+	+	+	+	-

A (+) sign indicates a positive reaction, while a (-) sign indicates a negative reaction.

Table 3. Mean \pm SD ($n = 30$) growth of whiteleg shrimp *Litopenaeus vannamei* after 45 days of feeding trial

Parameters	T1	T2
Average body weight (ABW) (g)	5.61 ± 0.22	$7.71 \pm 0.24^*$
Weight gain (g)	5.59 ± 7.78	$7.69 \pm 0.08^*$
Specific growth rate (SGR) (%/day)	12.52 ± 0.17	$13.23 \pm 0.14^*$

* A significant difference ($p < 0.05$).

T1, control diet; T2, CO-supplemented diet.

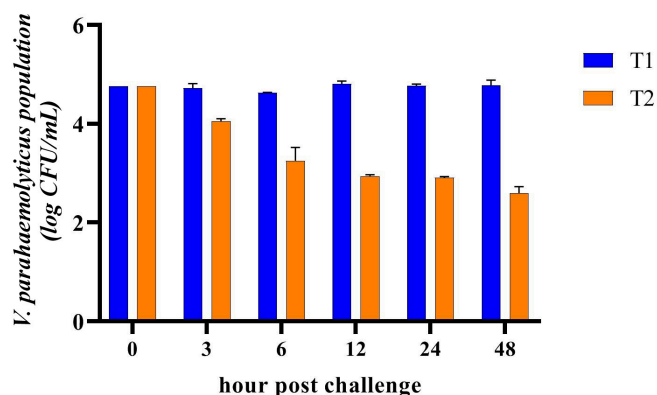


Fig. 3. *Vibrio parahaemolyticus* population (Log CFU/mL) ($n = 3$) in the shrimp at the beginning and after 3, 6, 12, 24, and 48 hours unchallenged (T1) and challenged with *Chromolaena odorata* leaf flour components (CO) (T2).

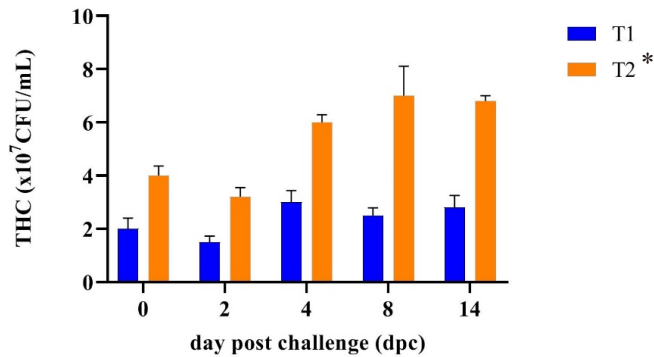


Fig. 4. Mean ± SD total hemocyte counts (THC) (n = 3) of whiteleg shrimp before, 2nd, 4th, 8th, and 14th day post-challenge. T1, control diet; T2, CO-supplemented diet; *, a significant difference ($p < 0.05$).

that after a feeding trial for 45 days of farmed rearing, whiteleg shrimp fed a CO supplementation diet (T2) significantly increased their THC value (4×10^7 CFU/mL) compared to that (2×10^7 CFU/mL) of shrimp fed a control diet (T1). The result of the THC observation indicated that a higher THC in shrimp fed the CO-supplemented diet (T2) had been shown before the challenge test compared with the control shrimp (T1). THC levels were greatly reduced in shrimp fed the control diet may be because there had been an infection caused by pathogenic bacteria or viruses since being farmed.

Differential hemocyte counts (DHC)

After whiteleg shrimp were fed a CO-supplemented diet (T2) and control diet (T1) and challenged with *V. parahaemolyticus*, the proportions of the three hemocyte types changed (Table 5 and Fig. 5), and the percentage of GC increased dramatically. The pattern of changes in GC values in whiteleg shrimp in both treatments had the same tendency; however, GC values in shrimp fed diet T1 were always lower than GC values in shrimp fed diet T2. On the 2nd dpc, the granular cell number decreased in the T2 treatment and increased in the T1 treatment. Furthermore, on the 4th, 8th, and 14th dpc, the granular cell number decreased to the GC values lower than the baseline values in both shrimp treatments. The hyaline in the T1 treatment decreased on the 2nd dpc, then increased on the 4th, 8th, and 14th dpc. Unlike hyaline in the shrimp group (T1), the shrimp group (T2) increased on the 2nd dpc, then decreased on the 4th, 8th, and 14th dpc. Since the 2nd dpc, semi-granular in the T1 treatment decreased; conversely, semi-granular in the T2 treatment

Table 5. DHC (n = 3) of whiteleg shrimp before, 2nd, 4th, 8th, and 14th day post-challenge

Treatment	Parameter	Initial	2nd dpc	4th dpc	8th dpc	14th dpc
Diet T1	Hyaline (%)	31.00	28.00	33.00	35.00	50.00
	Granular (%)	45.00	49.00	45.00	43.84	31.00
	Semi-granular (%)	24.00	23.00	22.00	21.16	19.00
Diet T2	Hyaline (%)	29.00	30.00	27.00	26.00	25.00
	Granular (%)	61.00	56.90	49.67	48.30	48.00
	Semi-granular (%)	10.00	13.10	23.33	25.70	27.00

T1, control diet; T2, CO supplementation diet.

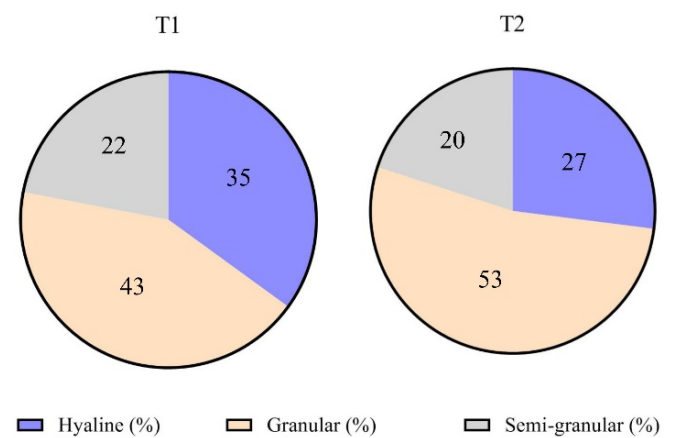


Fig. 5. The average differential hemocyte counts (DHC) (n = 3) of whiteleg shrimp before, 2nd, 4th, 8th, and 14th day post-challenge. T1, control diet; T2, CO supplementation diet.

increased. The proportion change of the three hemocyte types was summarized in Table 5.

Prophenoloxidase (proPO)

The current study found that the average proPO activity in shrimp fed the CO-supplemented diet (0.068) (T2) was higher and significantly different ($p < 0.05$) than that in shrimp fed the control diet (0.017) (T1). The proPO activity in the treatment shrimp (T2) decreased on the 2nd dpc, but their proPO activity was still higher than that in the control shrimp (T1) and then dramatically increased on the 8th dpc and remained relatively stable until the 14th dpc. In contrast, the proPO activity in control shrimp remained stable and lower than that of treatment shrimp during the challenge test (Fig. 6).

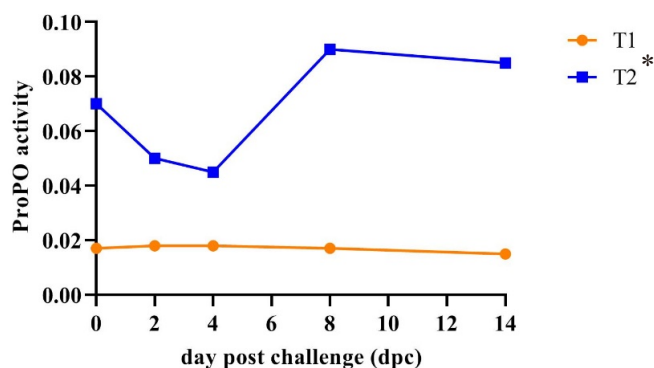


Fig. 6. proPO activity (n = 3) of whiteleg shrimp before, 2nd, 4th, 8th, and 14th dpc. T1, control diet; T2, CO supplementation diet; *, a significant difference ($p < 0.05$).

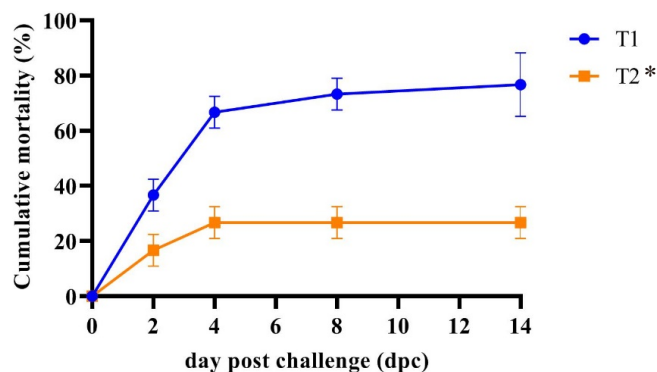


Fig. 7. Mean ± SD (n = 3) cumulative mortality of whiteleg shrimp before, 2nd, 4th, 8th, and 14th after *Vibrio parahaemolyticus* injection. T1, control diet; T2, CO-supplemented diet; *, a significant difference ($p < 0.05$).

Survival rate (SR)

The mortality rate of shrimp receiving the control diet (T1) exhibited a sharp increase on the 2nd day post-challenge (dpc) and persisted until the end of the study, as illustrated in Fig. 7. Conversely, a consistently high survival trend was observed in shrimp fed the CO-supplemented diet (T2) from the 2nd dpc onward. By the 14th dpc, nearly all shrimp fed the control diet (T1) had succumbed. Between the 4th and 14th dpc, shrimp provided with the CO-supplemented diet (T2) demonstrated significantly greater resistance ($p < 0.05$) to *V. parahaemolyticus* infection ($73.33 \pm 5.77\%$ SR) compared to those fed the control diet (T1) ($23.33 \pm 5.77\%$ SR). This data indicated the increased survival of shrimp fed the CO-supplemented diet by 50%, which may be the effect of *C. odorata* leaf bioactive compounds.

Discussion

The study found that the MeOH extract of *C. odorata* leaves contains natural ingredients such as flavonoids, alkaloids, triterpenoids, and steroids. The specific chemical composition of *C. odorata* may vary depending on the species, season, and plant location. The presence of phytochemical compounds such as alkaloids, flavonoids, terpenoids, and steroids in the leaves of *C. odorata* was suspected to increase the immune parameters of crustaceans such as shrimp.

In this study, *C. odorata* leaf meal showed its efficacy in reducing *V. parahaemolyticus* population at 3 hours to 48 hours after the challenge test. The population of *V. parahaemolyticus* in the shrimp decreased by 45.58% or 3.90×10^2 CFU/mL after 48 hours of challenge testing (Fig. 3). Flavonoids modulate the

immune system to enhance its function, whereas alkaloids serve as both immunostimulants and antibacterial agents, as documented by Idris Affandi et al. (2019). A similar result was also obtained by Behl et al. (2021) that the content of phytochemicals consisting of alkaloids, tannins and phenols has activity as an immunostimulant that can improve the quality of host immune cells. Flavonoids, alkaloids, and saponins have been shown to have pharmacological activity that can help protect whiteleg shrimp from bacterial diseases caused by *Vibrio* sp., called vibriosis (Nur et al., 2020; Santiago et al., 2021). Alkaloids, for example, boost shrimp's immune system by enhancing the activity of macrophage cells, which can engulf and destroy pathogens.

After 45 days of rearing shrimp was farmed, the whiteleg shrimp fed with a CO-supplemented diet (T2) had a higher ABW, body weight gain, and SGR than those in the shrimp fed a control diet (T1). The shrimp increased its growth parameter because the CO-supplemented diet contained nutrients such as carbohydrates, protein, lipids, minerals, and bioactive compounds (Table 3) that promote growth (Aziz et al., 2020). *C. odorata* also contains bioactive compounds that function as antiseptic substances that can inhibit bacterial growth (Rasyid et al., 2020). The presence of flavonoids and alkaloids in the leaves of *C. odorata*, which have antioxidant and antibacterial properties, could help protect aquatic animals from oxidative stress and bacterial infection caused by environmental factors (Eze & Jayeoye, 2021). *C. odorata* leaf flour can be used as a food supplement for Bali cattle, as it contains nutrients that improve their consumption, digestibility, pH, N-ammonia, volatile

fatty acids (VFA), and growth. Grape extract has been found to improve white shrimp's antioxidant activity and growth performance, specifically *L. vannamei* (Chien et al., 2023a). The shrimp fed the CO-supplemented diet showed a weight after 45 days of rearing in the pond of 7.71 ± 0.24 grams (ABW). This ABW was higher than that (around 5.00 g) reported by Purnamasari et al. (2017). The daily growth rate (SGR) in this study reached $13.23 \pm 0.14\%$ /day, which was higher than the growth of whiteleg shrimp after being fed dry grape extract of $2.76 \pm 0.06\%$ /day (Chien et al., 2023b) and Seaweed Polysaccharide (7.59 ± 0.33) (Abbas et al., 2023). Several plant extract applications, such as *Boesenbergia pandurata*, *Solanum ferox* extract (Hardi et al., 2022), and *Phyllanthus amarus* extract, have been reported to enhance the growth of shrimp (Ngo et al., 2020). The increased growth rate of whiteleg shrimp obtained after 45 days of rearing could also come from pond water quality under normal conditions, as noted in Table 4.

Bioactive compounds in *C. odorata* increased immune responses (Harlina et al., 2019). The increased formation of phagocytic cells is essential in controlling the attack of microorganisms. Elevated THC levels are associated with increased cellular and humoral immune responses (Braak, 2002; Mulyadi & Iba, 2020). In this study, THC shrimp fed the CO-supplemented diet before facing the challenge test showed an increase in hemocyte counts compared to shrimp that were only given a control diet. It indicates a proliferation of hemocytes, hinting that the shrimp's immune system has improved, making it better prepared to deal with pathogenic infections.

The average value of the THC post-challenge test of whiteleg shrimp fed the CO-supplemented diet (T2) (5.40×10^7 cells/mL) was significantly higher ($p < 0.05$) than whiteleg shrimp fed the control diet (T1) (2.36×10^7 cells/mL). This study showed that CO may have a better effect on whiteleg shrimp blood parameters after being challenged with *V. parahaemolyticus* than without CO. Decreased and increased THC levels can occur rapidly after a bacterial infection due to the body's defence response. THC levels decreased on the 2nd day after a bacterial infection was detected and then increased again on the 4th day as part of the shrimp's natural immune system recovery process as described in the study of Risjani et al. (2021). If the number of shrimps hemocytes increases, the body's defences also increase to avoid infection. Conversely, hemocyte numbers decrease because many die after destroying foreign macromolecules when the infection is overcome and resistance to foreign bodies is achieved.

The high amount of shrimp THC after being challenged with *V. parahaemolyticus* showed that the *C. odorata* bioactive compound could increase the immune response by stimulating the production of immune cells and molecules, such as cytokines and antibodies (Vijayaram et al., 2022) and growth promotion. Shrimp are not equipped with adaptive immune systems, so they must rely on the innate immune system (Kumar et al., 2022). The high THC value found in the shrimp group (T2) could improve the disease resistance of shrimp to reduce the risk of infection, which has an impact on a higher survival (Fig. 7) in shrimp group T2 after being challenged with *V. parahaemolyticus* compared to the shrimp group T1. In the earlier study of different species, tiger shrimp given a diet supplemented with *C. odorata* leaf flour had a higher THC value than the shrimp group fed without *C. odorata* leaf flour (Harlina et al., 2019). Like the whiteleg shrimp in the current study, the THC value obtained was much higher, possibly due to the shrimp being fed a diet supplemented with CO for a longer time in the pond or different shrimp responses due to pathogens entering. THC values in shrimp before the challenge test with *V. parahaemolyticus* had shown differences. In a more general sphere, it is thought that environmental conditions play an important role in influencing crustacean immune responses and resilience, especially in shrimp farms where environmental factors such as laboratory environments are often difficult to control. Many reports have noted the use of plants to enhance non-specific immune parameters in crustacea (Hardi et al., 2022; Ngo et al., 2020).

DHC refers to the proportion of different types of hemocytes (HC, GC, and SGC) in the hemolymph of shrimp. These three hemocyte cell types played different roles in the immune system. Hyaline cells are responsible for executing the phagocytic role within the shrimp immune system, while the collaborative efforts of granular and semi-granular cells contribute to the synthesis and subsequent release of antimicrobial peptides. According to Xian et al. (2017), the presence of an immune response is indicated by changes in hemocytes. In this study, before the challenge test, shrimp fed the CO-supplemented diet (T2) during the 45-day rearing period showed lower values of semi-granular cells and hyaline cells than these values in shrimp fed without CO-supplemented diet (T1) (Table 5 and Fig. 5). The lower semi-granular cells obtained could indicate the possibility that the bioactive compounds of *C. odorata* leaf triggered the maturation of hemocyte cells more quickly than in control shrimp during the grow-out in the pond. The change in the

number of hyaline cells is closely related to the semi-granular cell number derived from late-stage hyaline cell development. Thus, a reduction in the quantity of semi-granular cells is observed, attributed to the incapacity of hyaline cells to undergo differentiation into semi-granular cells (Risjani et al., 2021).

The number of differential hemocyte cells during the challenge test changed over time, and it can be found that hyaline and granular cells may play a key role in immune system function. The smallest cell type is hyaline cells, with a high ratio between nucleus and cytoplasm and relatively few cytoplasmic granules. These cells play a crucial role in the body's immune defense system, with the quantity of hyaline cells typically rising in correlation with heightened phagocytic activity. In instances of hyaline cell infection, a notable increase is commonly observed as an initial response in the body's defense mechanisms (Risjani et al., 2021). In this study, shrimp hyaline cells in T1 treatment groups decreased on the 2nd dpc, then increased on the 4th dpc, and continued to increase until the 14th, indicating an infection in hyaline cells.

In contrast, hyaline cells in the T2 groups increased on the 2nd dpc and then decreased on the 4th, 8th, and 14th dpc; instead, semi-granular cells continued increasing, indicating shrimp recovery from the infection. The granular and semi-granular cells are involved in crustaceans' recognition and defence system. Bioactive compounds of *C. odorata* leaf flour had increased shrimp protection from *V. parahaemolyticus* infection by increasing semi-granular cells associated with continuously increasing semi-granular cells since the 2nd dpc. Similar results have been reported in the use of *Xylocarpus granatum* leaf extract, which increased the number of semi-granular cells in tiger shrimp tested with *V. harveyi* by as much as 1.55 times higher than semi-granular cells in control shrimp (Saptiani et al., 2020).

The proportion of granular cells predominates among the three hemocyte cells (Fig. 2). The shrimp fed a CO-supplemented diet had granular cells of 53%, higher than the granular cells in the shrimp fed without a CO-supplemented diet (43%). The highest percentage of granular cells, also known as neutrophils, serve as pioneers in immune defence against Gram-negative bacteria; granular cells in this study indicated that bioactive compounds of *C. odorata* leaf could increase the shrimps' immune system by inducing hemocyte improvement (Xian et al., 2017). They have several mechanisms to enhance the immune response, including phagocytosis, degranulation, and NETosis. Neutrophils can engulf and kill pathogenic bacteria through

multiple bactericidal pathways. In addition, they have granules and enzyme pathways that help to eliminate pathogenic microbes. These granules can release cytokines that activate antigen-presenting cells and amplify the immune response.

Furthermore, neutrophils can produce lysozyme, an antimicrobial enzyme that can kill certain bacteria independently of peptidoglycan hydrolytic activity and modulate the host's immune response to infection. Dietary supplementation with methionine (Met) can improve growth performance and increase the activities of antioxidant enzymes in shrimp (Huang et al., 2020). Hyaline and granular cells were the two dominant cell types that were always observed to be higher than semi-granular cells after the 4th, 8th, and 14th dpc. The same pattern on both cell types was observed using seaweed extract *Sargassum* sp. to improve immune parameters (THC and DHC) in white shrimp *L. vannamei* juveniles challenged with *V. alginolyticus* (Mulyadi & Iba, 2020).

The proPO system's activity is a key element in the immune response associated with the defence against pathogens and their removal (González-Rete et al., 2019). The proPO cascade is triggered by a small number of microbe-derived molecules such as lipopolysaccharides, β -1, 3-glucans, or peptidoglycan, which are recognized by pattern-recognition proteins. ProPO is identified as a critical element within the immune system of shrimp, serving a pivotal role in safeguarding against microbial infections. PO, a crucial enzyme of the proPO system in invertebrates, promotes humoral defence mechanisms and subsequently eliminates pathogens. The proPO activity in the shrimp fed a CO-supplemented diet during the 45-day culture period in the pond was much higher than in the shrimp fed the control diet. This result is like previous studies that obtained higher proPO activity in shrimp who received diet supplementation with herbs material/extract (Ngo et al., 2020). The proPO activity enhancement in treated shrimp hemolymph (T2) indicates an increased immune response to the pathogen, which may impact shrimp SR of 73.33%.

On the other hand, the low SR observed in the control group (23.33%) (T1) may be due to the low activity of proPO. The decreased proPO activity can cause failed phagocytosis and tissue damage. A similar finding of the proPO activity in white-leg shrimp was obtained in tiger shrimp when challenged with *V. harveyi*. The *C. odorata* leaf flour-supplemented diet significantly increased the proPO activity in the treatment tiger shrimp group compared with the control tiger shrimp group (without *C. odorata* leaf flour supplementation) (Harlina et al., 2019).

Conclusion

The leaves of *C. odorata* were confirmed to contain bioactive components such as alkaloids, flavonoids, triterpenoids, and steroids, which are suspected to improve shrimp health. *L. vannamei* that received the CO at 1.5 g/kg of diet showed improved growth parameters and enhanced resistance to *V. parahaemolyticus* infection. The heightened THC, along with increased levels of granular and semi-granular cells and proPOpost the feeding trial, are associated with the supplementation of CO in the diet. The findings of this investigation propose that these dietary components have the capacity to serve as immunostimulants in shrimp, consequently enhancing growth and bolstering the immune response, thereby augmenting the resistance of whiteleg shrimp against bacterial infection. These results provide useful information for sustainable shrimp culture and the potential use of CO as a shrimp diet additive to improve growth, survival, immune responses, and resistance to bacterial infection. To explore the future perspectives of how the specific phytochemicals in CO stimulate the immune system, further research and investigations involving the study of the mechanisms of action of these phytochemicals, their interactions with the immune system components, and their effects on immune-related gene expression or signaling pathways in shrimp are needed.

Competing interests

No potential conflict of interest relevant to this article was reported.

Funding sources

This research was supported by the Ministry of Research, Technology and Higher Education through the DIPA-042-06-0/2021 scheme.

Acknowledgements

The author would like to thank the Rector of the Indonesian Muslim University, the Director of Research and Human Resources Development for the research facilities during the research, and the Director of the Research Institute for Brackish Water Aquaculture and Fisheries Extension (RIBAFE) for facilitating research in the fish and environmental health laboratory. The authors are also grateful to Dr. Abigail Mary Moore from England for her careful and thorough language editing of this manuscript.

Availability of data and materials

Upon reasonable request, the datasets of this study can be available from the corresponding author.

Ethics approval and consent to participate

This research has been approved by the UMI Health Research Ethics Commission Number: 237/A.1/KEPK-UMI/VI/2022 (June 12, 2022).

ORCID

Harlina Harlina	https://orcid.org/0000-0002-6863-3061
Rosmiati Rosmiati	https://orcid.org/0000-0002-3289-389X
Andi Hamdillah	https://orcid.org/0000-0002-6708-315X
Syahrul Syahrul	https://orcid.org/0000-0002-5322-9699
Yosie Andriani	https://orcid.org/0000-0001-6854-6446

References

- Abbas EM, Al-Souti AS, Sharawy ZZ, El-Haroun E, Ashour M. Impact of dietary administration of seaweed polysaccharide on growth, microbial abundance, and growth and immune-related genes expression of the pacific whiteleg shrimp (*Litopenaeus vannamei*). *Life*. 2023;13:344.
- Abdel-Tawwab M, El-Ashram AM, Tahoun AA, Abdel-Razek N, Awad SMM. Effects of dietary sweet basil (*Ocimum basilicum*) oil on the performance, antioxidants and immunity welfare, and resistance of Indian shrimp (*Penaeus indicus*) against *Vibrio parahaemolyticus* infection. *Aquac Nutr*. 2021;27:1244-54.
- Aziz NA, Mohamad M, Mohsin HF, Hazalin MN, Aqmar N, Khuriah AH. The pharmacological properties and medicinal potential of *Chromolaena odorata*: a review. *Int J Pharm Nutraceuticals Cosmet Sci*. 2020;2:30-41.
- Behl T, Kumar K, Brisc C, Rus M, Nistor-Cseppento DC, Bustea C, et al. Exploring the multifocal role of phytochemicals as immunomodulators. *Biomed Pharmacother*. 2021;133:110959.
- Braak K. Haemocytic defence in black tiger shrimp *Penaeus monodon*. Wageningen: Wageningen University; 2002.
- Chang ZW, Chang CC. *In vivo* study of a novel protein kinase C that mediates immunocompetence and catecholamine biosynthesis in hemocytes of *Litopenaeus vannamei* by using its potential competitive inhibitor, bisindolylmaleimide I. *Fish Shellfish Immunol*. 2022;122:87-97.
- Chien A, Cheng YC, Sheen SS, Kirby R. Dietary grape extract

- can, at an appropriate level, improve the growth performance and antioxidant activity of the white shrimp *Litopenaeus vannamei*. *Front Mar Sci.* 2023a;10: 1104870.
- Chien A, Chou CY, Cheng YC, Sheen SS, Kirby R. The optimal dietary level of dry grape extract and its effect on the growth performance and antioxidant activity of the white shrimp *Litopenaeus vannamei*. *Aquac Rep.* 2023b;29: 101527.
- Di Sotto A, Vitalone A, Di Giacomo S. Plant-derived nutraceuticals and immune system modulation: an evidence-based overview. *Vaccines.* 2020;8:468.
- Eze FN, Jayeoye TJ. *Chromolaena odorata* (Siam weed): a natural reservoir of bioactive compounds with potent anti-fibrillogenic, antioxidative, and cytocompatible properties. *Biomed Pharmacother.* 2021;141:111811.
- González-Rete B, Salazar-Schettino PM, Bucio-Torres MI, Córdoba-Aguilar A, Cabrera-Bravo M. Activity of the prophe-noloxidase system and survival of triatomines infected with different *Trypanosoma cruzi* strains under different temperatures: understanding Chagas disease in the face of climate change. *Parasit Vectors.* 2019;12:219.
- Ha PTH, Thi QVC, Thuy NP, Luan NT. Multi-antibiotics resistance phenotype of pathogenic *Vibrio parahaemolyticus* isolated from acute hepatopancreatic necrosis disease in *Litopenaeus vannamei* farmed in the Mekong delta. *J World Aquac Soc.* 2023;54:1070-87.
- Hardi EH, Nugroho RA, Agriandini M, Rizki M, Falah MEN, Almadi IF, et al. Application of phyto-stimulants for growth, survival rate, and meat quality improvement of tiger shrimp (*Penaeus monodon*). *Pathogens.* 2022;11:1243.
- Harlina H, Prajitno A, Suprayitno E, Nursyam H. The identification of chemical compound and antibacterial activity test of kopasanda (*Chromolaena odorata* L.) leaf extract against vibriosis-causing *Vibrio harveyi* (MR 275 Rif) on tiger shrimp. *Aquat Sci Technol.* 2013;1:15-29.
- Harlina, Rosmiati, Jafar S, Sukmawati, Nurhidayah, Kamaruddin. Effect of *Chromolaena odorata* as bioactive compound in artificial diet on survival rate of tiger prawn *Penaeus monodon*. *IOP Conf Ser Earth Environ Sci.* 2019;253:012015.
- Herawati VE, Pinandoyo, Darmanto YS, Rismaningsih N, Hutabarat J, Prayitno SB, et al. Effect of feeding with *Phronima* sp. on growth, survival rate and nutrient value content of pacific white shrimp (*Litopenaeus vannamei*) post-larvae. *Aquaculture.* 2020;529:735674.
- Huang Z, Aweya JJ, Zhu C, Tran NT, Hong Y, Li S, et al. Modulation of crustacean innate immune response by amino acids and their metabolites: inferences from other species. *Front Immunol.* 2020;11:574721.
- Idris Affandi R, Fadjar M, Wilujeng Ekawati A. Active compounds on squid (*Loligo* sp.) ink extract powder as immunostimulant candidate to against shrimp disease. *Res J Life Sci.* 2019;6:150-61.
- Kumar S, Verma AK, Singh SP, Awasthi A. Immunostimulants for shrimp aquaculture: paving pathway towards shrimp sustainability. *Environ Sci Pollut Res.* 2022;30:25325-43.
- Li X, Wang Y, Li H, Jiang X, Ji L, Liu T, et al. Chemical and quality evaluation of pacific white shrimp: influence of strains on flesh nutrition. *Food Sci Nutr.* 2021;9:5352-60.
- Morales-Covarrubias MS, Ramírez-Azpilcueta BA, Rodríguez JA, Rosa RD. An *in vitro* method for the analysis of hemocyte-derived extracellular traps in shrimp. *MethodsX.* 2023;10:102220.
- Mugwedi L. Harnessing opportunities provided by the invasive *Chromolaena odorata* to keep it under control. *Sustainability.* 2020;12:6505.
- Mulyadi IN, Iba W. Efficacy of seaweed (*Sargassum* sp.) extract to prevent vibriosis in white shrimp (*Litopenaeus vannamei*) juvenile. *Int J Zool Res.* 2020;16:1-11.
- Mustafa A, Syah R, Paena M, Sugama K, Kontara EK, Muliawan I, et al. Strategy for developing whiteleg shrimp (*Litopenaeus vannamei*) culture using intensive/super-intensive technology in Indonesia. *Sustainability.* 2023;15:1753.
- Ngo HVT, Huang HT, Lee PT, Liao ZH, Chen HY, Nan FH. Effects of *Phyllanthus amarus* extract on nonspecific immune responses, growth, and resistance to *Vibrio alginolyticus* in white shrimp *Litopenaeus vannamei*. *Fish Shellfish Immunol.* 2020;107:1-8.
- Nguyen L, Phan T, Vu S, Doan D. Zooplankton composition in super-intensive whiteleg shrimp, *Litopenaeus vannamei* (Boone, 1931) culture tanks. *HAYATI J Biosci.* 2022;29:851-62.
- Nur I, Linianti, Munaeni W, Abidin LOB, Maulidiyah. Assessment of antibacterial and immunostimulating activity of black cumin (*Nigella sativa*) extract against vibriosis in white shrimp (*Litopenaeus vannamei*). *Thai J Vet Med.* 2020;50:549-57.
- Purnamasari I, Purnama D, Utami MAF. Pertumbuhan udang vaname (*Litopenaeus vannamei*) di tambak intensif. *J Enggano.* 2017;2:58-67.

- Rasyid SA, Sugireng, Surya RA, Sanatang, Rosdarni, Natalia WOR. The antibacterial activity of tembelekan leaf (*Lantana camara* L.) and kopasanda leaf (*Chromolaena odorata* L.) extracts against *Staphylococcus aureus*. *Infect Dis Rep*. 2020;12:65-7.
- Risjani Y, Mutmainnah N, Manurung P, Wulan SN, Yunianta. Exopolysaccharide from *Porphyridium cruentum* (purpureum) is not toxic and stimulates immune response against vibriosis: the assessment using zebrafish and white shrimp *Litopenaeus vannamei*. *Mar Drugs*. 2021;19:133.
- Rosilan NE, Waiho K, Fazhan H, Sung YY, Mohd Nor SA, Nor Muhammad NA, et al. Protein-protein interaction network analysis on the whiteleg shrimp *Penaeus vannamei* and *Vibrio parahaemolyticus* host-pathogen relationship reveals possible proteins and pathways involved during infection. *Aquac Rep*. 2023;30:101583.
- Santiago LÂM, Neto RNM, Santos Ataíde AC, Fonseca DCSC, Soares EFA, de Sá Sousa JC, et al. Flavonoids, alkaloids and saponins: are these plant-derived compounds an alternative to the treatment of rheumatoid arthritis? A literature review. *Clin Phytosci*. 2021;7:58.
- Saptiani G, Sidik AS, Ardhani F, Hardi EH. Response of hemocytes profile in the black tiger shrimp (*Penaeus monodon*) against *Vibrio harveyi* induced by *Xylocarpus granatum* leaves extract. *Vet World*. 2020;13:751-7.
- Soto-Rodríguez SA, Lozano-Olvera R, Ramos-Clamont Montfort G, Zenteno E, Sánchez-Salgado JL, Vibanco-Pérez N, et al. New insights into the mechanism of action of PirAB from *Vibrio Parahaemolyticus*. *Toxins*. 2022;14:243.
- Velázquez-Lizárraga AE, Juárez-Morales JL, Racotta IS, Villarreal-Colmenares H, Valdes-Lopez O, Luna-González A, et al. Transcriptomic analysis of pacific white shrimp (*Litopenaeus vannamei*, Boone 1931) in response to acute hepatopancreatic necrosis disease caused by *Vibrio parahaemolyticus*. *PLoS ONE*. 2019;14:e0220993.
- Vijayaram S, Sun YZ, Zuurro A, Ghafarifarsani H, Van Doan H, Hoseinifar SH. Bioactive immunostimulants as health-promoting feed additives in aquaculture: a review. *Fish Shellfish Immunol*. 2022;130:294-308.
- Xian JA, Zhang XX, Wang DM, Li JT, Zheng PH, Lu YP. Various cellular responses of different shrimp haemocyte subpopulations to lipopolysaccharide stimulation. *Fish Shellfish Immunol*. 2017;69:195-9.
- Zahara M. Description of *Chromolaena odorata* L. R.M King and H. Robinson as medicinal plant: a review. *IOP Conf Ser Mater Sci Eng*. 2019;506:012022.