



의사에게 요구되는 인간이해를 통합한 질병발생모델의 제안

순천향대학교 의과대학 순천향대학교 천안병원 ¹소화기내과, ²신장내과, ³호흡기알레르기내과, ⁴정신건강의학과, ⁵핵의학과, ⁶종양혈액내과, ⁷관절류마티스내과, ⁸병리과, ⁹내분비대사내과, ¹⁰순천향대학교 의과대학 순천향대학교 부천병원 소화기내과

박상흠¹ · 박삼엘² · 김진영³ · 이현아⁴ · 이상미⁵ · 이태훈¹ · 배상병⁶ ·
장성혜⁷ · 장시형⁸ · 전성완⁹ · 문종호¹⁰

Human Understanding is Expected of the Physician: Proposing a Model of Disease Development

Sang-Heum Park¹, Samel Park², Jin Young Kim³, Hyeon Ah Lee⁴, Sang Mi Lee⁵, Tae Hoon Lee¹,
Sang Byung Bae⁶, Sung Hae Chang⁷, Si Hyong Jang⁸, Sung Wan Chun⁹, and Jong Ho Moon¹⁰

¹Division of Gastroenterology, Department of Internal Medicine, ²Division of Nephrology, Department of Internal Medicine, ³Division of Respiratory Allergy and Critical Care Medicine, Department of Internal Medicine, ⁴Department of Psychiatry, ⁵Department of Nuclear Medicine, ⁶Division of Oncology and Hematology, Department of Internal Medicine, ⁷Division of Rheumatology, Department of Internal Medicine, ⁸Department of Pathology, ⁹Division of Endocrinology and Metabolism, Department of Internal Medicine, Soonchunhyang University Cheonan Hospital, Soonchunhyang University College of Medicine, Cheonan; ¹⁰Division of Gastroenterology, Department of Internal Medicine, Soonchunhyang University Bucheon Hospital, Soonchunhyang University College of Medicine, Bucheon, Korea

In Harrison's *Principles of Internal Medicine*, human understanding is emphasized as one of three necessary characteristics that a physician must have. Inflammation, which is caused by inflammatory inducers (inf-ids), is a fundamental feature of disease at the cellular and molecular levels. Inflammation protects the body, but excessive or prolonged inflammation can be damaging and can cause disease. Humans are repeatedly exposed to external and internal environmental factors that generate inf-ids throughout their lives. External environmental factors include microbial and non-microbial inf-ids, as well as stressors that inevitably arise during social interactions. Internal environmental factors include the adaptive physiological response that is present from birth. Inf-ids may also be produced by the four-step habit loop, which consists of a cue (e.g., stressor), emotions, routine act (adaptive response), and a reward. Immune cells in the circulatory system and in tissues may have positive and negative effects in inflammatory responses.

Received: 2023. 10. 5

Revised: 2023. 11. 8

Accepted: 2023. 11. 22

Correspondence to Sang-Heum Park, M.D.

Division of Gastroenterology, Department of Internal Medicine, Soonchunhyang University Cheonan Hospital, Soonchunhyang University College of Medicine, 31 Suncheonhyang 6-gil, Dongnam-gu, Cheonan 31151, Korea
Tel: +82-41-570-3892, Fax: +82-41-570-2850, E-mail: pparksh@schmc.ac.kr

Copyright © 2024 The Korean Association of Internal Medicine

This is an Open Access article distributed under the terms of the Creative Commons Attribution Non-Commercial License (<http://creativecommons.org/licenses/by-nc/3.0/>) which permits unrestricted noncommercial use, distribution, and reproduction in any medium, provided the original work is properly cited.

However, low-grade inflammation may be difficult to detect. We propose a model of disease development that integrates external and internal environmental factors from the perspective of human understanding. (Korean J Med 2024;99:84-95)

Keywords: Human understanding; Disease development; Inflammation; Four-step habit loop; Adaptive response

INTRODUCTION

Disease onset involves inflammation at the cellular and molecular levels [1-4]. Inflammation is mediated by the innate and acquired immune systems and it protects the body from infectious and non-infectious agents [1,2]. When the process progresses smoothly, inflammatory factors are removed by immune cells, and the damaged tissues are eventually repaired. However, if the inflammation is excessive or prolonged, cells and tissues can become damaged, resulting in various diseases [3,5,6]. Inflammation is an indispensable response that protects the human body, but it is also called the ‘silent killer’ because it can provoke disease [4].

The first page of Harrison’s *Principles of Internal Medicine* states that physicians require technical skill, scientific knowledge, and human understanding [7,8]. In addition to human understanding, Shakespearean breadth has now been introduced, emphasizing the need for a broader understanding of human beings as exemplified in the works of the great English playwright William Shakespeare [8]. Harrison’s *Principles of Internal Medicine* suggests that to understand the ultimate source of a disease and provide effective treatment, it is necessary to have detailed insight into the stressors that the patient has experienced, is currently experiencing, or expects to experience in the future, as well as the emotions induced by those stressors. It is important to understand that disease involves more than simply damage to the components of the human body.

In a previous report, we suggested that a human understanding of patients and diseases from the perspective of Shakespearean breadth is necessary to treat pancreaticobiliary disease, reduce the rate of recurrence, and ultimately prevent the disease [9]. The biomedical basis of human understanding has been linked to the habit loop and the adaptive response that are unconsciously and automatically activated by stressors [10-14]. Based on a previously proposed model of human understanding that was applied to pancreaticobiliary disease [9], we suggest a model of disease develop-

ment that includes inflammatory mechanisms at the cellular and molecular levels.

DISEASE AND INFLAMMATION

Diseases are conditions in which cells fail to maintain homeostasis due to molecular or structural alterations and damage caused by physical and chemical stimuli [2,15]. Various stimuli can damage cells and activate inflammatory pathways, which have four components: inducers, sensors, mediators, and target tissues (Fig. 1) [2,16-19]. Inducers stimulate the sensory receptors of immune cells, induce the secretion of inflammatory mediators (IMs), and may be classified as microbial or non-microbial [19]. Non-microbial inducers may be further classified as exogenous substances of inducers (Exo-SIs), which are introduced into the body from an external source, or endogenous substances of inducers (Endo-SIs), which are generated inside the body.

Exo-SIs generally enter the body through the nose, mouth, or skin [1]. Some Exo-SIs are harmful in any quantity, such as tobacco, air pollutants, asbestos fibers, crystalline silica, caustic substances, paraquat, coal tar, defoliants, perfluorooctanoic acid, polyethylene, and polyvinyl chloride [20-28]. Other Exo-SIs, including food and drink, may only be harmful if the body ingests more than it can process; this can result in excessive production of substances, such as cholesterol crystals, lipids, glucose, urate crystals, and acetaldehyde. Hyperlipidemia, hyperglycemia, hyperuricemia, or excessive production of aldehyde can stimulate monocytes, macrophages, endothelial cells, smooth muscle cells, mast cells, neutrophils, hepatocytes, Kupffer cells, and hepatic stellate cells, leading to the production of IMs [18,29-32]. In addition, high-fat and/or high-carbohydrate intake can elevate the levels of endotoxins, which are potent inflammatory antigens, in the blood [33-35].

Food may also be considered an Exo-SIs when consumed excessively. The lifestyles of many people have changed, and

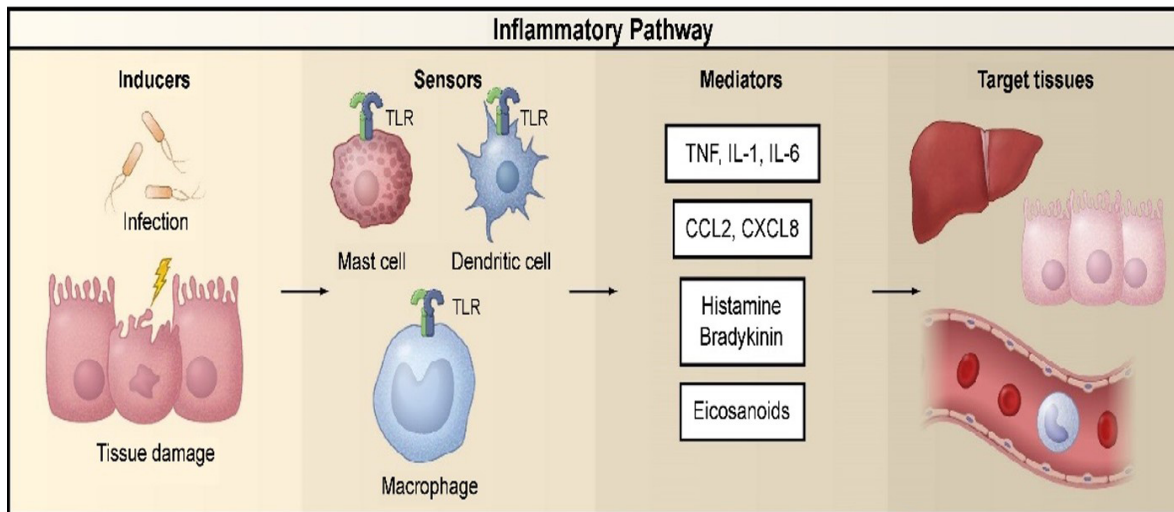


Figure 1. Inflammatory pathway components. The inflammatory pathway consists of inducers, sensors, mediators, and target tissues. Inducers initiate the inflammatory response and are detected by sensors. Sensors, such as TLRs, are expressed on specialized sentinel cells, such as tissue-resident macrophages, dendritic cells, and mast cells. They induce the production of mediators, including cytokines, chemokines, bioactive amines, eicosanoids, and products of proteolytic cascades, such as bradykinin. These inflammatory mediators act on various target tissues to elicit changes in their functional states that optimize adaptation to the noxious condition (e.g., infection or tissue injury) associated with the particular inducers that elicited the inflammatory response. The specific components shown represent only a small sample of the myriad different sensors, mediators, and target tissues involved in the inflammatory response. Reproduced from Medzhitov [2]. TLR, Toll-like receptor; TNF, tumor necrosis factor; IL, interleukin; CCL2, C-C motif chemokine ligand 2; CXCL8, C-X-C motif chemokine ligand 8.

levels of physical activity have decreased due to the mechanization of labor and transport. Consequently, calorie intake is often excessive, and obesity has become more prevalent [36-39]. Obesity results in chronic low-grade inflammation (LGI) via the following mechanisms: dysregulated secretion of adipokines; secretion of cytokines and chemokines from macrophages, endothelial cells, and other immune cells in adipose tissue; cell death and hypoxia in adipose tissue; an increase in intestinal lipopolysaccharide-containing microbiota; and a decrease in the activity of the vagus nerve, which is a vital component of the inflammatory reflex [36,38-40].

Endo-SIs include stress hormones, pathogenic substances, physiological secretions (e.g., gastric acid, pancreatic juice, and bile), and metabolites (e.g., urine, stool, and sweat). Stress hormones are generated via the hypothalamic-pituitary-adrenal (HPA) axis and sympathetic nervous system (SNS), which are activated by physical or psychological stressors [11,12,41,42]. When the HPA axis is activated, corticotropin-releasing factor is secreted from the hypothalamus, adrenocorticotropic hormone is released from

the pituitary gland, and glucocorticoids (GCs) are secreted from the adrenal cortex. Stimulation of the somatic nervous system by stressors induces the secretion of norepinephrine (NE) from the terminal nerve and epinephrine (EP) from the adrenal medulla via the pons and spinal cord. NE, EP, and GCs bind to receptors on immune cells (e.g., neutrophils, monocytes, natural killer cells, macrophages, T cells, and B cells) in the blood, tissues, and organs (e.g., bone marrow, thymus, spleen, gut-associated lymphoid tissue, bronchus-associated lymphoid tissue, and lymph nodes); this activates intracellular signaling pathways and produces various IMS [3,11,13,43-45].

Pathogenic substances are associated with necrotic cell death and tumors. Three types of pathogenic substance are associated with necrotic cell death [46]. The first type includes chromatin-associated high-mobility group box 1 proteins, heat shock proteins, and purine metabolites (e.g., adenosine triphosphate and uric acid); these are released from cells after the plasma membranes are ruptured. The second type includes hyaluronan, heparan sulfate, and biglycan, which are produced after the extracellular matrix

is degraded. The third type includes the biologically active pro-inflammatory cytokines and chemokines present in cells, including interleukin (IL)-1a and IL-33.

Pathogenic substances are also secreted by tumors or induced by cancer therapy. The tumor microenvironment consists of inflammatory cells that stimulate tumor proliferation and migration [47-50]. Tumor cells secrete cytokines and chemokines to attract leukocytes, such as neutrophils, dendritic cells, macrophages, eosinophils, mast cells, and lymphocytes. These leukocytes produce cytokines and cytotoxic mediators to further promote inflammation. Cancer therapies include chemotherapy, radiotherapy, and immunotherapy; these treatments kill tumor cells, releasing substances that stimulate inflammation [51,52].

The other Endo-SIs include enzymes (e.g., in saliva, gastric acid, pancreatic juice, and bile) and metabolites (e.g., in urine, stool, and sweat) that are involved in normal physiological and metabolic processes. These play roles in digestion and maintain balance in the internal environment [53]. However, there are two situations in which these can become Endo-SIs and cause inflammation. This may occur if the site of action is altered. For example, gastric acid and pepsin facilitate the digestion of food but can cause inflammation in the esophageal epithelium if they are refluxed into the esophagus [54,55]. In the congenital anomaly of pancreaticobiliary maljunction, digestive pancreatic juice is released into the biliary tract causing inflammation [56]. Inflammation can also occur if gastric acid, bile, pancreatic juice, or stool is released into the abdominal, retroperitoneal, or thoracic cavities following gastroduodenal or intestinal perforation or pancreatitis [57,58]. The other situation in which enzymes or metabolites can become Endo-SIs is when their excretion is impaired. Bile accumulates in the biliary tract or blood when it cannot be secreted into the duodenum due to hepatitis, gallbladder dyskinesia, sphincter of Oddi dysfunction, or a biliary obstruction. This may cause cholecystitis, hepatitis, neurotoxicity, or systemic inflammatory response syndrome [59-61]. Furthermore, various products of protein metabolism are excreted in the urine. If renal failure inhibits the excretion of these products, they accumulate in the blood and become inflammatory inducers (inf-ids) that stimulate systemic inflammation [62,63].

External environmental and internal human characteristics that induce and prolong inflammation

People are exposed to Exo-SIs and microbial inducers throughout their lifetimes [64]. They frequently eat, drink, and inhale Exo-SIs (e.g., food, cigarettes, alcohol, and air pollutants) for survival or pleasure, or even unconsciously. In particular, humans have an inherent fear of starvation and tend to overeat unknowingly [65]. In addition, microbes are always present both inside and outside the human body [1].

Psychological stress can produce Endo-SIs at various times of life [66-69]. As seen in the many plays written by William Shakespeare, stress results from conflicts when people with different backgrounds, cognitive biases, values, and goals interact. Moreover, stressors are natural and inevitable in human life. Humans have evolved the adaptive response to situations in which survival or self-esteem is threatened [11,12,70,71]. This adaptive response includes a physical (behavioral) reaction that activates the skeletal muscles and a physiological reaction that activates the internal organs [11,72,73]. These reactions are stimulated by emotions that occur when a particularly stressful situation is encountered [11,13,70,72-74]. Cannon reported that the physical fight-or-flight response is activated by anger or fear, with fighting being a response to anger and flight a response to fear [70]. Among the stress hormones that can function as Endo-SIs (EP, NE, and GCs), catecholamine (EP and NE) plays a key role in the fight-or-flight response [11,45,70,75]. Interestingly, the HPA axis and SNS are always activated simultaneously and produce stress hormones [11,41-43,45]. Thus, anger and fear stimulate the fight-or-flight response and the physiological reaction. Likewise, other emotions, such as despair, depression, sadness, or anxiety can also trigger the adaptive response [11-13,69].

Emotions are often responsible for human behaviors [76-79]. Emotions also synchronize those behaviors that introduce Exo-SIs into the human body, such as overeating, alcohol consumption, and smoking [80]. In addition, emotions may affect food choices and eating patterns. Strong emotions may inhibit food intake, but less intense emotions may have unpredictable effects on eating habits [81,82]. Sometimes, sweets and high-calorie foods are consumed in response to negative emotions. One study reported a

32% higher prevalence of depression among people who were overweight or obese compared to people of normal weight [83].

Smoking and excessive alcohol consumption may sometimes calm negative emotions [84-86]. According to a segmentation study in 1981, smoking may relieve anxiety, depressive symptoms, and stress; it may also improve self-control [87]. The tension reduction theory suggests that alcohol consumption affects the central nervous system and reduces stress [88].

Interestingly, the adaptive response is also activated by perceived threats [11,13,44,89,90]. Therefore, regardless of authenticity, if a situation is perceived as threatening, the adaptive response is triggered automatically. Furthermore, even in a genuinely threatening situation, the adaptive response may vary depending on the appraisal of the situation [11,75,89]. In fact, the adaptive response occurs only when the individual perceives and appraises a situation as a threat to survival. Finally, the adaptive response can be triggered by recollection of past events or anxiety about the future [11,12,79,91-93].

Past experiences that are associated with pain or fear, such as childhood trauma, sexual assault, war, traffic accidents, or life-threatening situations can cause schizokinesis and may be stored in long-term memory [94-96]. As demonstrated by Pavlov's conditioned reflex, the recall of invisible memories can activate a visible physiological response (e.g., saliva) [97]. Traumatic experiences in childhood can alter stress sensitivity, triggering the adaptive response under relatively low levels of stress [91,98-103]. Traumatic childhood experiences can also result in chronic activation of the adaptive response for decades, repeatedly generating Endo-SIs [102,104]. In addition, very severe childhood trauma may increase the frequency of Exo-SIs production and exacerbate problems (e.g., with alcohol consumption, smoking, physical inactivity, drug abuse, or obesity) [99,105].

Therefore, systems that are designed to maintain homeostasis can damage the human body and cause disease [2,4,11,12]. As described by Cannon, emotions have evolved to trigger and control the fight-or-flight response, which is essential for survival [70,106]. Such emotions can also maintain homeostasis and they are key components in the four-step habit loop for coping with stressors [9,77,107]. The adaptive response operates automatically in life-threatening situations [11,12,75]. Immune cells play

pivotal roles in eliminating pathogenic inducers [4,108,109]. These internal systems protect the human body from stressors, Exo-SIs, and Endo-SIs. However, inappropriate, excessive, or prolonged activation of these systems can damage the human body [2-6,11,12,17,19,107-109].

Inf-ids may be repeatedly introduced from outside the human body or produced inside the body due to habit loops that are initiated by stressors [9,10,14,110]. Habit loops are behavioral patterns that operate reflexively in response to similar situations. When emotions are triggered by stressors, the adaptive response may be activated immediately. Consequently, Exo-SIs are introduced into the body using the skeletal muscles as an alternative behavioral pattern to the fight-or-flight response; the physiological response may also be activated by stress hormones. Subsequently, emotional tension is temporarily relieved, and there is a psychological reward. Although this psychological compensation is temporary, individuals will tend to routinely repeat the same behavioral pattern when they encounter similar situations to achieve psychological relief [9,10,14,110]. Therefore, familiar stressors create a four-step habit loop involving a cue (e.g., stressor), emotions, routine act (adaptive response), and a reward [9].

A chronic protective inflammatory response can result in disease. This may occur when inf-ids persist and the inflammatory response is lower than normal [1,2,111,112]. Pathogenesis can also develop if the link between the function of the systemic anti-inflammatory response and the diffusible neural network that controls the spread of inflammation is disrupted [111,112]. Changes in the pattern of disease can also lead to persistent inflammation. In the past, many diseases were caused by acute inflammation due to infections or injuries. However, most chronic inflammatory diseases are now due to excessive food or alcohol consumption, tobacco, air pollutants, or psychosocial stress [2,15,16]. A key characteristic of chronic inflammatory diseases is the presence of LGI, in which typical inflammatory symptoms (e.g., pain, fever, erythema, and swelling) are not evident [2]. LGI involves only a two- to four-fold increase in the levels of inflammatory markers such as cytokines and acute phase proteins [113-115]. LGI differs from that observed in typical acute inflammation because the level of inflammation is relatively low and it is due to other than an infection or tissue injury. In addition, the inflammation is systemic rather than localized and

occurs over a longer period [16]. Pain, warmth, swelling, and erythema can be used to recognize and treat acute inflammation but LGI is more difficult to detect. However, if LGI persists, it may result in damage to cells and loss of organ function. LGI is characteristic of chronic diseases and is often associated with aging, hypertension, coronary heart disease, type 2 diabetes, metabolic syndrome, chronic obstructive pulmonary disease, osteoarthritis, post-traumatic stress disorder, depression, autoimmune diseases, functional dyspepsia, atrial fibrillation, and cancer [5,64,113-133].

A model of disease development that integrates human understanding

Figure 2 shows a model of disease development that integrates human understanding and involves external environmental and internal human characteristics, as described in the previous section. Stressors formed by memories, present situations, or future concerns activate the four-step habit loop. Emotions are elicited after the stressor is perceived and routine act (adaptive response) is

triggered. The emotional tension is temporarily relieved, and a psychological reward is obtained. Individuals routinely repeat the four-step habit loop whenever they encounter similar stressors.

The adaptive response of the four-step habit loop immediately activates the HPA axis and SNS, having two effects. First, the skeletal muscles are stimulated to introduce Exo-SIs (e.g., food, alcohol, or tobacco) into the body. However, excessive introduction of Exo-SIs may cause inflammation of the target tissue or produce IMs by stimulating immune cells in the blood or tissues. Second, a physiological reaction (involving GCs from the HPA axis or NE and EP from the SNS and adrenal medulla) produces IMs by stimulating immune cells. The IMs together with recruited immune cells cause inflammation in the target tissues. When inflammation is repeatedly triggered by Exo-SIs and/or Endo-SIs over a prolonged period, the target tissues are unable to recover and cells become irreversibly damaged. Eventually, organ function is impaired and disease develops.

Chronic inflammation becomes part of a vicious cycle before and after disease development. First, emotions elicited when Exo-SIs are introduced into the body reactivate the four-step

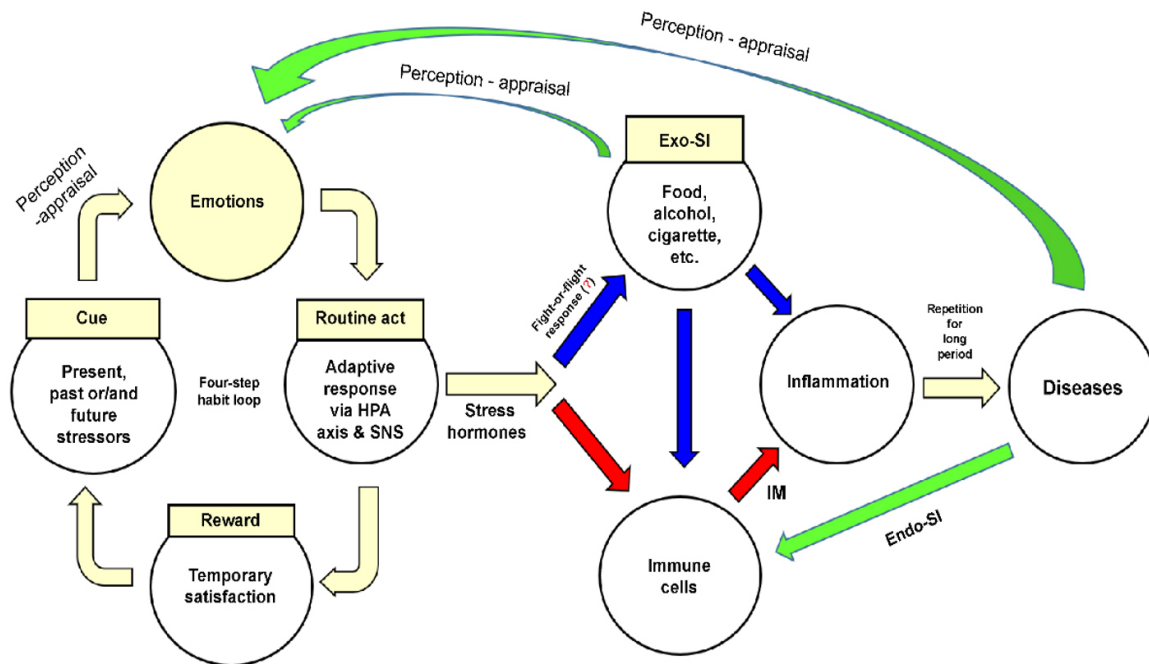


Figure 2. A model of disease development that integrates human understanding. Stress hormones mean glucocorticoids-epinephrine-norepinephrine. Exo-SI, exogenous substance of inducer; HPA, hypothalamic-pituitary-adrenal; SNS, sympathetic nervous system; IM, inflammatory mediator; Endo-SI, endogenous substance of inducer.

habit loop [134]. Second, the presence of disease is perceived as a threat, inducing negative emotions such as despair, fear, and anger [69,135], this also activates the four-step habit loop. Third, tissue necrosis due to the disease, substances secreted by tumor cells (e.g., cytokines and chemokines), and substances that have accumulated due to the disease (e.g., bile, pancreatic juice, urine, and urea) stimulate immune cells and exacerbate inflammation.

LIMITATIONS OF THE MODEL

This model has some limitations. First, the model is applicable only to diseases caused by repeated overstimulation of inf-ids over a prolonged period and may not apply to diseases caused by nutrient deficiencies. Second, the model may be less applicable to diseases that do not involve the four-step habit loop. Although diseases caused by congenital chromosomal abnormalities are due to an excess or deficiency of critical substances, they are not caused by stressors and emotions but rather by chromosomal alterations. Similarly, the model may not be applicable to diseases caused by infections because here the relationship between disease and the four-step habit loop is weak except infections associated with compulsive sexual behavior and injection drug use [136-139]. Third, the model is not suitable for understanding the impact of involuntary Exo-SIs, such as fine-particulate air and water pollutants produced in the individual's occupational environment or by industry or traffic (e.g., lead, diesel, tire particles, asbestos fibers, crystalline silica, defoliants, perfluorooctanoic acid, polyethylene, and polyvinyl chloride). Fourth, even when stressors, Exo-SIs, and/or Endo-SIs are similar, not all individuals will develop the disease, or the same disease even if they do. Such a phenomenon is also difficult to explain with this model. The incidence of disease may vary depending on individual differences, such as in the ability to perceive stressors, physical health, muscle volume, telomere length, dehydration, and microbiota [11,140-144]. For example, the same stressors may elicit different negative emotions in different individuals [11,69,145]. Essential factors of the pathogenesis of diseases usually include environmental and genetic factors [65,73,146]. In addition, personal factors, such as perception and interpretation abilities, emotion control, and/or the four-step habit loop may have an important impact on pathogenesis

[11,69,75,96,145,147]. Fifth, chronic disease development is frequently associated with LGI [113-133]. However, recognizing LGI is difficult because the signs associated with acute inflammation are absent or difficult to detect. Our model does not explain why the cellular damage that leads to disease cannot be detected early, and further studies on this topic are needed. Furthermore, diagnostic markers and tools that can detect LGI, such as the high-sensitivity C-reactive protein test, are required [148,149].

CONCLUSIONS

The requirement for human understanding means that physicians need an awareness of the external environment, as well as internal structural and functional characteristics, to monitor disease progression and provide effective treatments [9,69,91,96]. The human body is not sufficiently robust to withstand ongoing inflammation over a prolonged period, and individuals are constantly exposed to microbial and non-microbial inducers that can cause inflammation throughout their lives. Individuals have both adaptive and innate immune systems from birth, whereas the four-step habit loop and acquired immune system develop gradually thereafter. These function as protective systems that maintain homeostasis and promote survival against a background of changes in the external and internal environments. However, paradoxically, these systems may also damage the human body if they do not develop correctly or are activated for a prolonged period. They may be activated unconsciously in response to current situations but can also be triggered by recollection of past events or anxiety about the future. Importantly, the LGI that is frequently associated with chronic disease is difficult to detect.

Diseases are not simply disorders of the structural components of the human body but are also influenced by stressors experienced in the past or present, or anticipated in the future. Diseases may result from the interaction between genetic and environmental factors. Furthermore, how an individual perceives and interprets stressors, controls his or her emotions, and adjusts his or her four-step habit loop may be crucial.

The priority in treatment is recovery from the ill health caused by stimulation with microbial or non-microbial inducers. From the perspective of human understanding, treatment may be enhanced

by increasing the patient's awareness of the four-step habit loop because this mediates the repeated ingestion of Exo-SIs and/or produces Endo-SIs in response to stressors. Treatments should also be designed to reduce the likelihood of disease recurrence. Furthermore, disease development may be prevented by understanding how stress results from conflict when people with different values and goals interact, similar to the characters described in the many plays written by William Shakespeare. In conclusion, a disease development model that embraces the internal and external environmental characteristics described above is needed to prevent and treat disease. Therefore, we present a model of disease development that integrates human understanding and involves these characteristics.

중심 단어: 인간이해; 질병발생; 염증; 4단계 습관고리; 적응반응

CONFLICTS OF INTEREST

No potential conflict of interest relevant to this article was reported.

FUNDING

This review was funded by the Soonchunhyang University Research Fund.

AUTHOR CONTRIBUTIONS

Conceptualization: S.H.P; Methodology: H.A.L; Software: S.P, J.Y.K; Validation: S.W.C, S.B.B, T.H.L, J.H.M; Investigation: S.H.P, H.A.L; Resources: S.H.P, S.H.J; Writing - original draft preparation: S.H.P, S.P, J.Y.K; Writing - review and editing: J.Y.K, S.P, S.H.P; Visualization: S.M.L; Supervision: S.H.P; Project administration: S.H.P.

ACKNOWLEDGEMENTS

The authors would like to thank Shi Nae Yu, M.D., Division of Infectious Diseases, Department of Internal Medicine, Sae Hwan

Lee, M.D., Division of Gastroenterology, Department of Internal Medicine, Young Sin Cho, M.D., Division of Gastroenterology, Department of Internal Medicine, and Jin Myoung Seok, M.D., Department of Neurology, Soonchunhyang University Cheonan Hospital, Soonchunhyang University College of Medicine, Cheonan, Korea, for recommending references.

REFERENCES

1. Nathan C, Ding A. Nonresolving inflammation. *Cell* 2010; 140:871-882.
2. Medzhitov R. Inflammation 2010: new adventures of an old flame. *Cell* 2010;140:771-776.
3. Tian R, Hou G, Li D, Yuan TF. A possible change process of inflammatory cytokines in the prolonged chronic stress and its ultimate implications for health. *ScientificWorldJournal* 2014;2014:780616.
4. Kumar V, Abbas AK, Aster JC. Inflammation and repair. In: Kumar V, Abbas AK, Aster JC, eds. *Robbins & Cotran pathologic basis of disease*. 10th ed. Philadelphia: Elsevier, 2021:71-113.
5. Hotamisligil GS. Inflammation and metabolic disorders. *Nature* 2006;444:860-867.
6. Aggarwal BB, Vijayalekshmi RV, Sung B. Targeting inflammatory pathways for prevention and therapy of cancer: short-term friend, long-term foe. *Clin Cancer Res* 2009;15: 425-430.
7. Loscalzo J, Fauci A, Kasper D, Hauser S, Longo D, Jameson JL. The practice of medicine. In: Loscalzo J, Fauci A, Kasper D, Hauser S, Longo D, Jameson JL, eds. *Harrison's principles of internal medicine*. 21st ed. Vol. 1. New York: McGraw-Hill, 2022:1-8.
8. Fauci AS, Braunwald E, Isselbacher KJ, et al. The practice of medicine. In: Fauci AS, Braunwald E, Isselbacher KJ, et al., eds. *Harrison's principles of internal medicine*. 14th ed. Vol. 1. New York: McGraw Hill, 1998:1-6.
9. Park SH, Song HR, Lee SW, Lee TH. Wouldn't human understanding be necessary to treat patients with pancreaticobiliary disease more effectively? *Korean J Pancreas Biliary Tract* 2018;23:89-100.
10. Duhigg C. *The power of habit: why we do what we do in life and business*. New York: Penguin Random House, 2012.
11. McEwen BS. Protective and damaging effects of stress mediators. *N Engl J Med* 1998;338:171-179.
12. González-Díaz SN, Arias-Cruz A, Elizondo-Villarreal B, Monge-Ortega OP. Psychoneuroimmunoendocrinology: clinical implications. *World Allergy Organ J* 2017;10:19.
13. Glaser R, Kiecolt-Glaser JK. Stress-induced immune dys-

- function: implications for health. *Nat Rev Immunol* 2005;5:243-251.
14. Clear J. *Atomic habits: an easy & proven way to build good habits & break bad ones*. New York: Avery Publishing Group, 2018.
 15. Kotas ME, Medzhitov R. Homeostasis, inflammation, and disease susceptibility. *Cell* 2015;160:816-827.
 16. Rohleder N. Stimulation of systemic low-grade inflammation by psychosocial stress. *Psychosom Med* 2014;76:181-189.
 17. Marx J. Cancer research. Inflammation and cancer: the link grows stronger. *Science* 2004;306:966-968.
 18. Hansson GK. Inflammation, atherosclerosis, and coronary artery disease. *N Engl J Med* 2005;352:1685-1895.
 19. Medzhitov R. Origin and physiological roles of inflammation. *Nature* 2008;454:428-435.
 20. McCusker K. Mechanisms of respiratory tissue injury from cigarette smoking. *Am J Med* 1992;93:18S-21S.
 21. Pope CA 3rd, Ezzati M, Dockery DW. Fine-particulate air pollution and life expectancy in the United States. *N Engl J Med* 2009;360:376-386.
 22. Steenland K, Stayner L. Silica, asbestos, man-made mineral fibers, and cancer. *Cancer Causes Control* 1997;8:491-503.
 23. Fujiki H. Gist of Dr. Katsusaburo Yamagiwa's papers entitled "Experimental study on the pathogenesis of epithelial tumors" (I to VI reports). *Cancer Sci* 2014;105:143-149.
 24. Seok SJ, Gil HW, Jeong DS, Yang JO, Lee EY, Hong SY. Paraquat intoxication in subjects who attempt suicide: why they chose paraquat. *Korean J Intern Med* 2009;24:247-251.
 25. Steenland K, Fletcher T, Savitz DA. Epidemiologic evidence on the health effects of perfluorooctanoic acid (PFOA). *Environ Health Perspect* 2010;118:1100-1108.
 26. Hoffman RS, Burns MM, Gosselin S. Ingestion of caustic substances. *N Engl J Med* 2020;382:1739-1748.
 27. Kang HK, Dalager NA, Needham LL, et al. Health status of Army Chemical Corps Vietnam veterans who sprayed defoliant in Vietnam. *Am J Ind Med* 2006;49:875-884.
 28. Marfella R, Prattichizzo F, Sardu C, et al. Microplastics and nanoplastics in atheromas and cardiovascular events. *N Engl J Med* 2024;390:900-910.
 29. de Vries MA, Klop B, Janssen HW, Njo TL, Westerman EM, Cabezas MC. Postprandial inflammation: targeting glucose and lipids. *Adv Exp Med Biol* 2014;824:161-170.
 30. Perez-Ruiz F, Castillo E, Chinchilla SP, Herrero-Beites AM. Clinical manifestations and diagnosis of gout. *Rheum Dis Clin North Am* 2014;40:193-206.
 31. Gao B, Bataller R. Alcoholic liver disease: pathogenesis and new therapeutic targets. *Gastroenterology* 2011;141:1572-1585.
 32. Dunn W, Shah VH. Pathogenesis of alcoholic liver disease. *Clin Liver Dis* 2016;20:445-456.
 33. Erridge C, Attina T, Spickett CM, Webb DJ. A high-fat meal induces low-grade endotoxemia: evidence of a novel mechanism of postprandial inflammation. *Am J Clin Nutr* 2007;86:1286-1292.
 34. Ghanim H, Abuaysheh S, Sia CL, et al. Increase in plasma endotoxin concentrations and the expression of Toll-like receptors and suppressor of cytokine signaling-3 in mononuclear cells after a high-fat, high-carbohydrate meal: implications for insulin resistance. *Diabetes Care* 2009;32:2281-2287.
 35. Laugerette F, Vors C, Géloën A, et al. Emulsified lipids increase endotoxemia: possible role in early postprandial low-grade inflammation. *J Nutr Biochem* 2011;22:53-59.
 36. Gregor MF, Hotamisligil GS. Inflammatory mechanisms in obesity. *Annu Rev Immunol* 2011;29:415-445.
 37. Drake I, Sonestedt E, Ericson U, Wallström P, Orho-Melander M. A Western dietary pattern is prospectively associated with cardio-metabolic traits and incidence of the metabolic syndrome. *Br J Nutr* 2018;119:1168-1176.
 38. Balistreri CR, Caruso C, Candore G. The role of adipose tissue and adipokines in obesity-related inflammatory diseases. *Mediators Inflamm* 2010;2010:802078.
 39. Schelbert KB. Comorbidities of obesity. *Prim Care* 2009;36:271-285.
 40. Pavlov VA, Tracey KJ. The vagus nerve and the inflammatory reflex--linking immunity and metabolism. *Nat Rev Endocrinol* 2012;8:743-754.
 41. Chrousos GP. The hypothalamic-pituitary-adrenal axis and immune-mediated inflammation. *N Engl J Med* 1995;332:1351-1362.
 42. Reiche EM, Nunes SO, Morimoto HK. Stress, depression, the immune system, and cancer. *Lancet Oncol* 2004;5:617-625.
 43. Downing JE, Miyan JA. Neural immunoregulation: emerging roles for nerves in immune homeostasis and disease. *Immunol Today* 2000;21:281-289.
 44. Black PH. The inflammatory response is an integral part of the stress response: implications for atherosclerosis, insulin resistance, type II diabetes and metabolic syndrome X. *Brain Behav Immun* 2003;17:350-364.
 45. Oberbeck R. Catecholamines: physiological immunomodulators during health and illness. *Curr Med Chem* 2006;13:1979-1989.
 46. Chen GY, Nuñez G. Sterile inflammation: sensing and reacting to damage. *Nat Rev Immunol* 2010;10:826-837.
 47. Colotta F, Allavena P, Sica A, Garlanda C, Mantovani A. Cancer-related inflammation, the seventh hallmark of cancer: links to genetic instability. *Carcinogenesis* 2009;30:1073-1081.
 48. Coussens LM, Werb Z. Inflammation and cancer. *Nature* 2002;420:860-867.

49. Arneth B. Tumor microenvironment. *Medicina (Kaunas)* 2019; 56:15.
50. Mantovani A, Allavena P, Sica A, Balkwill F. Cancer-related inflammation. *Nature* 2008;454:436-444.
51. Greten FR, Grivennikov SI. Inflammation and cancer: triggers, mechanisms, and consequences. *Immunity* 2019;51:27-41.
52. de Freitas Saito R, Rangel MC, Chandler M, Beasock D, Afonin KA, Chammas R. Cancer therapy-induced inflammation and its consequences. In: de Araujo DR, Carneiro-Ramos M, eds. *Biotechnology applied to inflammatory diseases: cellular mechanisms and nanomedicine*. Berlin: Springer, 2023:49-75.
53. Hall JE, Hall ME. *Guyton and Hall textbook of medical physiology*. 14th ed. Amsterdam: Elsevier, 2020.
54. Barbera M, Fitzgerald RC. Cellular mechanisms of Barrett's esophagus development. *Surg Oncol Clin N Am* 2009;18: 393-410.
55. Vaezi MF, Richter JE. Role of acid and duodenogastroesophageal reflux in gastroesophageal reflux disease. *Gastroenterology* 1996;111:1192-1199.
56. Kamisawa T, Takuma K, Anjiki H, et al. Pancreaticobiliary maljunction. *Clin Gastroenterol Hepatol* 2009;7 Suppl 11:S84-S88.
57. Langell JT, Mulvihill SJ. Gastrointestinal perforation and the acute abdomen. *Med Clin North Am* 2008;92:599-625, viii-ix.
58. Søreide K, Thorsen K, Harrison EM, et al. Perforated peptic ulcer. *Lancet* 2015;386:1288-1298.
59. Sherman S, Lehman GA. Sphincter of Oddi dysfunction: diagnosis and treatment. *JOP* 2001;2:382-400.
60. Brites D. The evolving landscape of neurotoxicity by unconjugated bilirubin: role of glial cells and inflammation. *Front Pharmacol* 2012;3:88.
61. Pavlidis ET, Pavlidis TE. Pathophysiological consequences of obstructive jaundice and perioperative management. *Hepatobiliary Pancreat Dis Int* 2018;17:17-21.
62. Guarnieri G, Biolo G, Zanetti M, Barazzoni R. Chronic systemic inflammation in uremia: potential therapeutic approaches. *Semin Nephrol* 2004;24:441-445.
63. Cantarin MPM, Whitaker-Menezes D, Lin Z, Falkner B. Uremia induces adipose tissue inflammation and muscle mitochondrial dysfunction. *Nephrol Dial Transplant* 2017;32: 943-951.
64. Franceschi C, Capri M, Monti D, et al. Inflammaging and anti-inflammaging: a systemic perspective on aging and longevity emerged from studies in humans. *Mech Ageing Dev* 2007;128:92-105.
65. Goldman L. *Too much of a good thing: how four key survival traits are now killing us*. New York: Little, Brown Spark, 2015.
66. Kim YK, Maes M. The role of the cytokine network in psychological stress. *Acta Neuropsychiatr* 2003;15:148-155.
67. Sorrells SF, Caso JR, Munhoz CD, Sapolsky RM. The stressed CNS: when glucocorticoids aggravate inflammation. *Neuron* 2009;64:33-39.
68. Maniam J, Morris MJ. The link between stress and feeding behaviour. *Neuropharmacology* 2012;63:97-110.
69. Simonton OC, Creighton J, Simonton SM, Matthews S, Creighton JL. *Getting well again: the bestselling classic about the Simontons' revolutionary lifesaving self-awareness techniques*. New York: Bantam Books, 1992.
70. Cannon WB. The emergency function of the adrenal medulla in pain and the major emotions. *Am J Physiol* 1914;33: 356-372.
71. Varki A. Nothing in medicine makes sense, except in the light of evolution. *J Mol Med (Berl)* 2012;90:481-494.
72. Segerstrom SC, Miller GE. Psychological stress and the human immune system: a meta-analytic study of 30 years of inquiry. *Psychol Bull* 2004;130:601-630.
73. Mawdsley JE, Rampton DS. Psychological stress in IBD: new insights into pathogenic and therapeutic implications. *Gut* 2005;54:1481-1491.
74. Holmes TH, Rahe RH. The social readjustment rating scale. *J Psychosom Res* 1967;11:213-218.
75. Szabo S, Tache Y, Somogyi A. The legacy of Hans Selye and the origins of stress research: a retrospective 75 years after his landmark brief "letter" to the editor[#] of *Nature*. *Stress* 2012;15: 472-478.
76. Ekman P. *Emotions revealed: recognizing faces and feelings to improve communication and emotional life*. 2nd ed. New York: St. Martin's Press, 2007.
77. Zeelenberg M, Nelissen RMA, Breugelmans SM, Pieters R. On emotion specificity in decision making: why feeling is for doing. *Judgm Decis Mak* 2008;3:18-27.
78. Phelps EA, Lempert KM, Sokol-Hessner P. Emotion and decision making: multiple modulatory neural circuits. *Annu Rev Neurosci* 2014;37:263-287.
79. Lerner JS, Li Y, Valdesolo P, Kassam KS. Emotion and decision making. *Annu Rev Psychol* 2015;66:799-823.
80. Ulrich-Lai YM, Fulton S, Wilson M, Petrovich G, Rinaman L. Stress exposure, food intake and emotional state. *Stress* 2015;18:381-399.
81. Macht M. How emotions affect eating: a five-way model. *Appetite* 2008;50:1-11.
82. Evers C, Dingemans A, Junghans AF, Boevé A. Feeling bad or feeling good, does emotion affect your consumption of food? A meta-analysis of the experimental evidence. *Neurosci Biobehav Rev* 2018;92:195-208.
83. Pereira-Miranda E, Costa PRF, Queiroz VAO, Pereira-Santos

- M, Santana MLP. Overweight and obesity associated with higher depression prevalence in adults: a systematic review and meta-analysis. *J Am Coll Nutr* 2017;36:223-233.
84. Wills TA. Stress and coping in early adolescence: relationships to substance use in urban school samples. *Health Psychol* 1986;5:503-529.
85. Leventhal H, Cleary PD. The smoking problem: a review of the research and theory in behavioral risk modification. *Psychol Bull* 1980;88:370-405.
86. Russell JA, Mehrabian A. The mediating role of emotions in alcohol use. *J Stud Alcohol* 1975;36:1508-1536.
87. Lasser K, Boyd JW, Woolhandler S, Himmelstein DU, McCormick D, Bor DH. Smoking and mental illness: a population-based prevalence study. *JAMA* 2000;284:2606-2610.
88. Sayette MA. The effects of alcohol on emotion in social drinkers. *Behav Res Ther* 2017;88:76-89.
89. Black PH, Garbutt LD. Stress, inflammation and cardiovascular disease. *J Psychosom Res* 2002;52:1-23.
90. Szalay J. What is inflammation [Internet]. New York (NY): Live Science, c2018 [cited 2018 Oct 19]. Available from: <http://www.livescience.com/52344-inflammation.html>.
91. Harris NB. *The deepest well: healing the long-term effects of childhood adversity*. Boston: Houghton Mifflin Harcourt, 2018.
92. Schulkin J, McEwen BS, Gold PW. Allostasis, amygdala, and anticipatory angst. *Neurosci Biobehav Rev* 1994;18:385-396.
93. Schulz P, Kirschbaum C, Prübner J, Hellhammer D. Increased free cortisol secretion after awakening in chronically stressed individuals due to work overload. *Stress Med* 1998;14:91-97.
94. Gantt WH. Principles of nervous breakdown-schizokinesis and autokinesis. *Ann N Y Acad Sci* 1953;56:143-163.
95. Kandel ER. *In search of memory: the emergence of a new science of mind*. 1st ed. New York: W. W. Norton & Company, 2007.
96. Lown B. *The lost art of healing: practicing compassion in medicine*. New York: Ballantine Books, 1999.
97. Pavlov PI. Conditioned reflexes: an investigation of the physiological activity of the cerebral cortex. *Ann Neurosci* 2010;17:136-141.
98. Chaplin TM, Niehaus C, Gonçalves SF. Stress reactivity and the developmental psychopathology of adolescent substance use. *Neurobiol Stress* 2018;9:133-139.
99. Felitti VJ, Anda RF, Nordenberg D, et al. Relationship of childhood abuse and household dysfunction to many of the leading causes of death in adults. The adverse childhood experiences (ACE) study. *Am J Prev Med* 1998;14:245-258.
100. National Scientific Council. Excessive stress disrupts the development of brain architecture. *J Child Serv* 2014;9:143-153.
101. Teicher MH, Samson JA. Annual research review: enduring neurobiological effects of childhood abuse and neglect. *J Child Psychol Psychiatry* 2016;57:241-266.
102. Koss KJ, Gunnar MR. Annual research review: early adversity, the hypothalamic-pituitary-adrenocortical axis, and child psychopathology. *J Child Psychol Psychiatry* 2018;59:327-346.
103. Grasso DJ, Ford JD, Briggs-Gowan MJ. Early life trauma exposure and stress sensitivity in young children. *J Pediatr Psychol* 2013;38:94-103.
104. Danese A, Lewis SJ. Psychoneuroimmunology of early-life stress: the hidden wounds of childhood trauma? *Neuropsychopharmacology* 2017;42:99-114.
105. Schwandt ML, Heilig M, Hommer DW, George DT, Ramchandani VA. Childhood trauma exposure and alcohol dependence severity in adulthood: mediation by emotional abuse severity and neuroticism. *Alcohol Clin Exp Res* 2013;37:984-992.
106. Ekman P. Are there basic emotions? *Psychol Rev* 1992;99:550-553.
107. Chrousos GP, Gold PW. The concepts of stress and stress system disorders. Overview of physical and behavioral homeostasis. *JAMA* 1992;267:1244-1252.
108. Wright HL, Moots RJ, Bucknall RC, Edwards SW. Neutrophil function in inflammation and inflammatory diseases. *Rheumatology (Oxford)* 2010;49:1618-1631.
109. Sica A, Mantovani A. Macrophage plasticity and polarization: in vivo veritas. *J Clin Invest* 2012;122:787-795.
110. Bromberg-Martin ES, Matsumoto M, Hikosaka O. Dopamine in motivational control: rewarding, aversive, and alerting. *Neuron* 2010;68:815-834.
111. Tracey KJ. The inflammatory reflex. *Nature* 2002;420:853-859.
112. Andersson U, Tracey KJ. Neural reflexes in inflammation and immunity. *J Exp Med* 2012;209:1057-1068.
113. Brüünsgaard H, Pedersen BK. Age-related inflammatory cytokines and disease. *Immunol Allergy Clin North Am* 2003;23:15-39.
114. Tkacova R. Systemic inflammation in chronic obstructive pulmonary disease: may adipose tissue play a role? Review of the literature and future perspectives. *Mediators Inflamm* 2010;2010:585989.
115. Dinh QN, Drummond GR, Sobey CG, Chrissobolis S. Roles of inflammation, oxidative stress, and vascular dysfunction in hypertension. *Biomed Res Int* 2014;2014:406960.
116. Danesh J. Smoldering arteries? Low-grade inflammation and coronary heart disease. *JAMA* 1999;282:2169-2171.
117. Siti HN, Kamisah Y, Kamsiah J. The role of oxidative stress, antioxidants and vascular inflammation in cardiovascular disease (a review). *Vascul Pharmacol* 2015;71:40-56.

118. Danesh J, Whincup P, Walker M, et al. Low grade inflammation and coronary heart disease: prospective study and updated meta-analyses. *BMJ* 2000;321:199-204.
119. Pradhan AD, Manson JE, Rifai N, Buring JE, Ridker PM. C-reactive protein, interleukin 6, and risk of developing type 2 diabetes mellitus. *JAMA* 2001;286:327-334.
120. Duncan BB, Schmidt MI, Pankow JS, et al. Low-grade systemic inflammation and the development of type 2 diabetes: the atherosclerosis risk in communities study. *Diabetes* 2003; 52:1799-1805.
121. Fuentes E, Fuentes F, Vilahur G, Badimon L, Palomo I. Mechanisms of chronic state of inflammation as mediators that link obese adipose tissue and metabolic syndrome. *Mediators Inflamm* 2013;2013:136584.
122. Catrysse L, van Loo G. Inflammation and the metabolic syndrome: the tissue-specific functions of NF- κ B. *Trends Cell Biol* 2017;27:417-429.
123. Tajti G, Gesztelyi R, Pak K, et al. Positive correlation of airway resistance and serum asymmetric dimethylarginine level in COPD patients with systemic markers of low-grade inflammation. *Int J Chron Obstruct Pulmon Dis* 2017;12:873-884.
124. Robinson WH, Lepus CM, Wang Q, et al. Low-grade inflammation as a key mediator of the pathogenesis of osteoarthritis. *Nat Rev Rheumatol* 2016;12:580-592.
125. von Känel R, Hepp U, Kraemer B, et al. Evidence for low-grade systemic proinflammatory activity in patients with post-traumatic stress disorder. *J Psychiatr Res* 2007;41:744-752.
126. Speer K, Upton D, Semple S, McKune A. Systemic low-grade inflammation in post-traumatic stress disorder: a systematic review. *J Inflamm Res* 2018;11:111-121.
127. Dowlati Y, Herrmann N, Swardfager W, et al. A meta-analysis of cytokines in major depression. *Biol Psychiatry* 2010; 67:446-457.
128. Felger JC, Lotrich FE. Inflammatory cytokines in depression: neurobiological mechanisms and therapeutic implications. *Neuroscience* 2013;246:199-229.
129. Rönnbäck C, Hansson E. The importance and control of low-grade inflammation due to damage of cellular barrier systems that may lead to systemic inflammation. *Front Neurol* 2019;10:533.
130. Miwa H, Oshima T, Tomita T, et al. Recent understanding of the pathophysiology of functional dyspepsia: role of the duodenum as the pathogenic center. *J Gastroenterol* 2019;54: 305-311.
131. Lubbers ER, Price MV, Mohler PJ. Arrhythmogenic substrates for atrial fibrillation in obesity. *Front Physiol* 2018;9:1482.
132. Van't Klooster CC, Ridker PM, Hjortnaes J, et al. The relation between systemic inflammation and incident cancer in patients with stable cardiovascular disease: a cohort study. *Eur Heart J* 2019;40:3901-3909.
133. Ahechu P, Zozaya G, Martí P, et al. NLRP3 inflammasome: a possible link between obesity-associated low-grade chronic inflammation and colorectal cancer development. *Front Immunol* 2018;9:2918.
134. Schuckit MA. Alcohol, anxiety, and depressive disorders. *Alcohol Health Res World* 1996;20:81-85.
135. Lu Y, Jin X, Feng LW, Tang C, Neo M, Ho RC. Effects of illness perception on negative emotions and fatigue in chronic rheumatic diseases: rumination as a possible mediator. *World J Clin Cases* 2022;10:12515-12531.
136. Workowski KA, Bachmann LH, Chan PA, et al. Sexually transmitted infections treatment guidelines, 2021. *MMWR Recomm Rep* 2021;70:1-187.
137. Derbyshire KL, Grant JE. Compulsive sexual behavior: a review of the literature. *J Behav Addict* 2015;4:37-43.
138. Marks LR, Nolan NS, Liang SY, Durkin MJ, Weimer MB. Infectious complications of injection drug use. *Med Clin North Am* 2022;106:187-200.
139. Mirin SM, Meyer RE, McNamee HB. Psychopathology and mood during heroin use: acute vs chronic effects. *Arch Gen Psychiatry* 1976;33:1503-1508.
140. Tomaka J, Blascovich J, Kibler J, Ernst JM. Cognitive and physiological antecedents of threat and challenge appraisal. *J Pers Soc Psychol* 1997;73:63-72.
141. Blackburn EH, Epel ES, Lin J. Human telomere biology: a contributory and interactive factor in aging, disease risks, and protection. *Science* 2015;350:1193-1198.
142. Wolfe RR. The underappreciated role of muscle in health and disease. *Am J Clin Nutr* 2006;84:475-482.
143. Lacey J, Corbett J, Forni L, et al. A multidisciplinary consensus on dehydration: definitions, diagnostic methods and clinical implications. *Ann Med* 2019;51:232-251.
144. Johnson KVA. Gut microbiome composition and diversity are related to human personality traits. *Hum Microb J* 2020; 15:100069.
145. Sinha R. Chronic stress, drug use, and vulnerability to addiction. *Ann N Y Acad Sci* 2008;1141:105-130.
146. Anand P, Kunnumakkara AB, Sundaram C, et al. Cancer is a preventable disease that requires major lifestyle changes. *Pharm Res* 2008;25:2097-2116.
147. Blackburn E, Epel E. The telomere effect: a revolutionary approach to living younger, healthier, longer. New York: Grand Central Publishing, 2017.
148. Sproston NR, Ashworth JJ. Role of C-reactive protein at sites of inflammation and infection. *Front Immunol* 2018;9: 754.
149. Ridker PM, Hennekens CH, Buring JE, Rifai N. C-reactive protein and other markers of inflammation in the prediction of cardiovascular disease in women. *N Engl J Med* 2000;342: 836-843.