

RESEARCH NOTE

First Report of *Sarocladium strictum* Causing Sheath Rot of Rice (*Oryza sativa*) in Korea

Berrick Ochieng^{1,2}, Sung Kee Hong¹, Oliul Hassan¹, and Hyunjoo Ryu^{1*}

¹Crop Protection Division, National Institute of Agricultural Sciences, Wanju 55365, Korea

²Kenya Agricultural and Livestock Research Organization, Nairobi 57811, Kenya

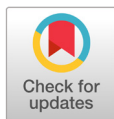
*Corresponding author: hyunjoor@korea.kr

ABSTRACT

Rice sheath rot causes yield losses of up to 85% in rice-growing areas worldwide. In September 2023, the disease was detected in rice fields at the National Institute of Agricultural Sciences in Wanju, Korea. Two isolates (FD00214 and FD00215) were collected from symptomatic rice sheaths and identified as *Sarocladium strictum* based on their morphological characteristics and molecular sequencing of two genomic regions: the internal transcribed spacer and actin. Pathogenicity tests confirmed that *S. strictum* were the cause of the disease. To our knowledge, this is the first report of rice sheath rot caused by *S. strictum* in South Korea.

Keywords: *Sarocladium strictum*, Sheath rot

Rice is the second-most important cereal food crop after wheat, with Asia accounting for 90% of rice produced worldwide [1]. In Korea, rice comprises approximately 70% of dietary cereal and grain intake [2]. Rice production faces numerous challenges because of the frequent emergence of pests and diseases. Rice sheath rot disease, an emerging rice panicle disease capable of causing yield losses of 20-85%, has been reported in almost all rice-growing areas worldwide [2]. The infected leaf sheath typically rots and turns grayish-brown or reddish-brown, depending on the rice cultivar, leading to unmerged and empty panicles. The major causative agent was identified as *Acrocyliindrium oryzae*, which was later named as *Sarocladium oryzae*. However, other studies showed that *Fusarium* spp. belonging to the *F. fujikuroi* species complex and the bacterial pathogen *Pseudomonas fuscovaginae* can also cause sheath rot in rice. These organisms produce a range of phytotoxins that induce necrosis in host plants. Pathogens in the genus *Sarocladium* (*S. oryzae*, *S. attenuatum*, *S. sparsum*, *S. strictum*) are mostly found in lowland environments, where hot and humid weather favors their establishment [3]. Under these conditions, the pathogen can survive in infected seeds, plant residues, soil, water, and weeds. The pathogen can infect rice at various growth stages by entering the plant stomata or wounds, with signs and symptoms of infection appearing during or after the booting stage. Insect and mite damage or weakening of the plant by other pathogens facilitates entry of *Sarocladium* sp. into the plant [3]. Secondary infections may be windborne when the pathogen enters the plant through injured tissues. *Sarocladium* spp. mainly use rice as a host but have also been reported to



OPEN ACCESS

pISSN : 0253-651X
eISSN : 2383-5249

Kor. J. Mycol. 2024 March, 52(1): 19-24
<https://doi.org/10.4489/kjm.520103>

Received: December 15, 2023

Revised: March 26, 2024

Accepted: March 26, 2024

© 2024 THE KOREAN SOCIETY OF MYCOLOGY.



This is an Open Access article distributed under the terms of the Creative Commons Attribution Non-Commercial License (<http://creativecommons.org/licenses/by-nc/4.0/>) which permits unrestricted non-commercial use, distribution, and reproduction in any medium, provided the original work is properly cited.

be the causal agents of bamboo blight in bamboo plants, grasses, and sedges in Bangladesh and India [3]. In China, *S. strictum* is associated with brown spots on apple [4]. In Korea, *S. oryzae* was reported to be involved in rice ear blight; however, whether *Sarocladium* sp. is involved in sheath rot disease is unknown [5]. Therefore, studies are needed to understand the impact of yield loss caused by sheath rot disease in rice and to incorporate an integrated disease management approaches in Korea.

Hence, this study was conducted to determine whether *Sarocladium* spp. is present in Korea as well as the pathogenicity and cultural characteristics of the pathogens through morphological and molecular studies. In September 2023, rice showing sheath rot was observed in rice fields at the National Institute of Agricultural Sciences, Korea (35°82'88.0"N, 127°04'44.0"E). The rice sheath had lesions with pale gray and brown centers and dark brown margins (Fig. 1A and B). To isolate the fungus, the panicles and excised lesions were disinfected with 1% sodium hypochlorite for 3 min and placed on water agar; the plates were incubated at room temperature. *Sarocladium strictum* produced mycelia and conidial chains on surface-sterilized rice sheath lesions (Fig. 1C). At 10 days post-inoculation, pure cultures were obtained by placing small agar blocks containing single hyphal tips onto potato dextrose agar (PDA) plates. Both acquired strains, FD00214 and FD00215, were preserved on PDA slants at the Plant disease Laboratory (National Institute of Agricultural Sciences, Wanju, Korea). Agar blocks were cut from the mycelial fronts of the PDA slants, placed at the center of PDA plates, and incubated at 25°C in the dark. Mycelial growth was measured at 14 days post-inoculation, followed by observation under a light microscope. Measurements and photographs were taken using slide preparations with water as the mounting medium. Morphological characteristics were examined at 14 days post-incubation at 25°C in the dark. The colonies were moist to smooth, pale orange to pink in color, and 40 mm in diameter (Fig. 2A and B). The phialides hyaline were slender, smooth walled and measured 10-32 (21.7) × 2-4 (2.7) μm in diameter (Fig. 2C). Conidia were one-celled with a slimy head and measured 3-6 (4.5) × 2-4 (2.4) μm in diameter (Fig. 2D). The morphological and culture characteristics of the isolates were similar to those previously reported for *Sarocladium* species [6,7]. The isolates FD00214 and FD00215 were cultured in 20 mL potato dextrose broth for 10 days, and DNA from representative isolates was extracted using a Maxwell® RSC PureFood GMO and Authentication Kit (Promega, Madison, WI, USA). The internal transcribed spacer (ITS) and actin gene (ACT) regions were amplified using primer pairs ITS1/ITS4 and Act1/Act4, respectively [8,9]. The PCR program was performed as follows: denaturation at 94°C for 2 min; followed by amplification for 35 cycles of 94°C for 30 s, 55°C for 30 s, and 53°C for 30 s; and 72°C for 60 s. Final extension was performed for 10 min at 72°C. The 25 μL reaction mixture contained 1 μL each F/R primer (10 pmol/μL), 2.5 μL 10x EasyTaq (buffer), 1 μL dNTPs, 0.2 μL Taq DNA polymerase, 1 μL template DNA (33 ng/μL), and 19.3 μL ddH₂O. The amplified products were purified using agarose gel electrophoresis and then sequenced. The sequences of the ITS and ACT genes were compared with those in GenBank using BLASTn (<https://blast.ncbi.nlm.nih.gov/Blast.cgi>). The resulting sequences were deposited in GenBank under accession nos. LC784015–LC784018. A BLASTn search of the ITS and ACT DNA sequences showed 99.81% and 98.32% identity to *S. strictum* isolate CBS 346.70, respectively. Reference sequences of the ITS and ACT genes were used to generate a phylogenetic tree [10]. Sequences were assembled

using the MUSCLE program (Edgar 2004) and edited manually using MEGA X [11]. The alignment consisted of seven ITS and ACT gene sequences of *Sarocladium* spp., including the reference sequences. A phylogenetic tree was constructed using the maximum likelihood method and implemented in Mega XI software with 1,000 bootstrap replications [12]. The reference sequence for *Acremonium curvulum* was used as an outgroup in the phylogenetic tree. The amplified and sequenced PCR products of *Sarocladium* sp. isolates were approximately 600 and 900 bp long for the ITS and ACT gene regions, respectively. The phylogeny inferred using the sequence data obtained in this study, together with sequence data from *Sarocladium* species previously described by Abdollahi and Fotouhifar (2016), placed our isolates together with *S. strictum* (syn. *Acremonium strictum*) isolates (Fig. 3). The results of phylogenetic analysis were consistent with the description of *S. strictum*. A pathogenicity test was conducted using the attached tiller assay inoculation technique [13]. Briefly, a seven-day old culture of *S. strictum* culture on PDA was used. The mycelial mat on the PDA medium was cut into approximately equal sizes using a sterile blade and used for inoculation. Three tillers (per plant) at the booting stage, grown in pots inside a greenhouse, were inoculated with mycelial discs, covered with sterile moistened absorbent cotton, wrapped with paraffin film, and wrapped with PDA disks without mycelia. The plants were maintained at high humidity. Symptoms were observed daily to verify that the initial symptoms of *S. strictum* were re-isolated using PDA plates for the inoculated isolates. Symptoms included lesions appearing as grayish-brown and reddish-brown, along with unmerged and empty panicles only on the inoculated leaf sheath at 14 days post-inoculation, whereas control samples remained asymptomatic (Fig. 4). The *S. strictum* isolates were re-isolated from the infected tissues of the inoculated leaves, thus fulfilling Koch's postulates. Our findings are similar to those of recent studies of the interactions between maize and *S. strictum* isolates from Cameroon, which led to detection of a species with pathogenic properties [14]. *Sarocladium strictum* was also found to cause wilting and death of strawberry plants [15]. The isolates FD00214 and FD00215 were identified as *S. strictum* based on their morphology and molecular data. This species is frequently isolated from soil and plant rhizospheres as a hyperparasitic fungus. This fungus was also recorded as *Acremonium strictum* from *Heterodera schachtii* and some plant substrates, such as *Vitis sylvestris* and *Zea mays* in Iran [16]. To the best of our knowledge, this is the first report of sheath rot of rice caused by *S. strictum* in South Korea.

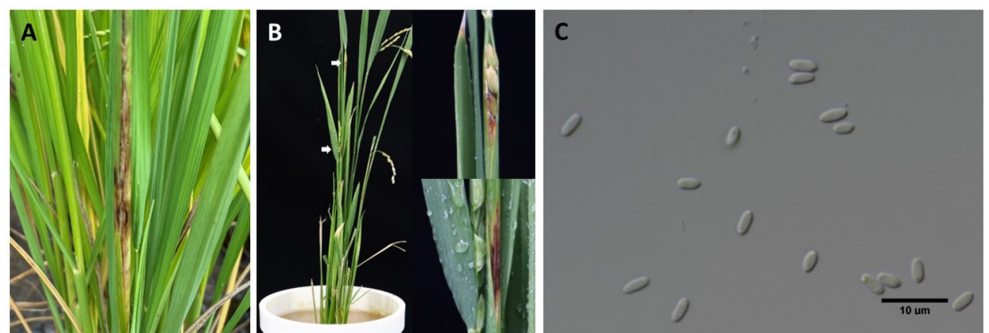


Fig. 1. Sheath rot caused by *Sarocladium strictum* on Rice (*Oryza sativa*). A, symptoms on the leaf sheath having pale grey/brown centers with dark brown margins along the sheath disrupting panicle emergence under in field condition. B, rotting of rice panicles inoculated with *S. strictum* at booting stage (White arrows=symptom in rice). C, Conidia- grouped in slimy heads. Scale bar C=10 μ m.

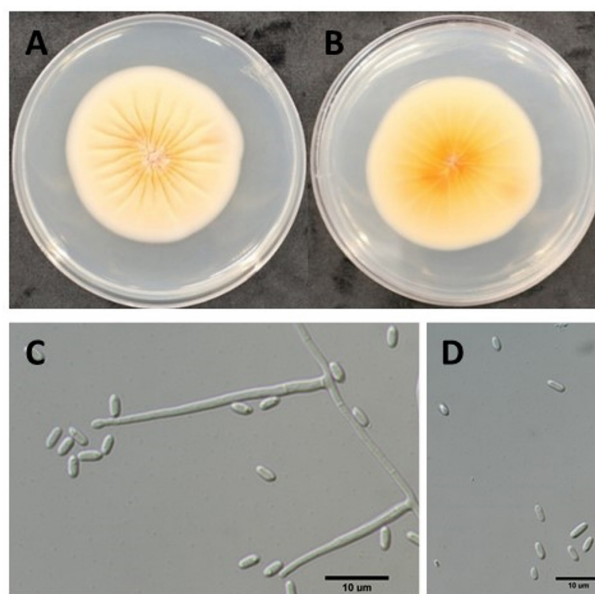


Fig. 2. *Sarocladium strictum* colony on potato dextrose agar (PDA) incubated at 25°C in the dark for fourteen days. A, observed colony. B, reverse side of the colony. C, slender smooth walled phialide hyaline. D, 1-celled, cylindrical conidia- grouped in slimy heads. Scale bar C=10 µm; D=10 µm.

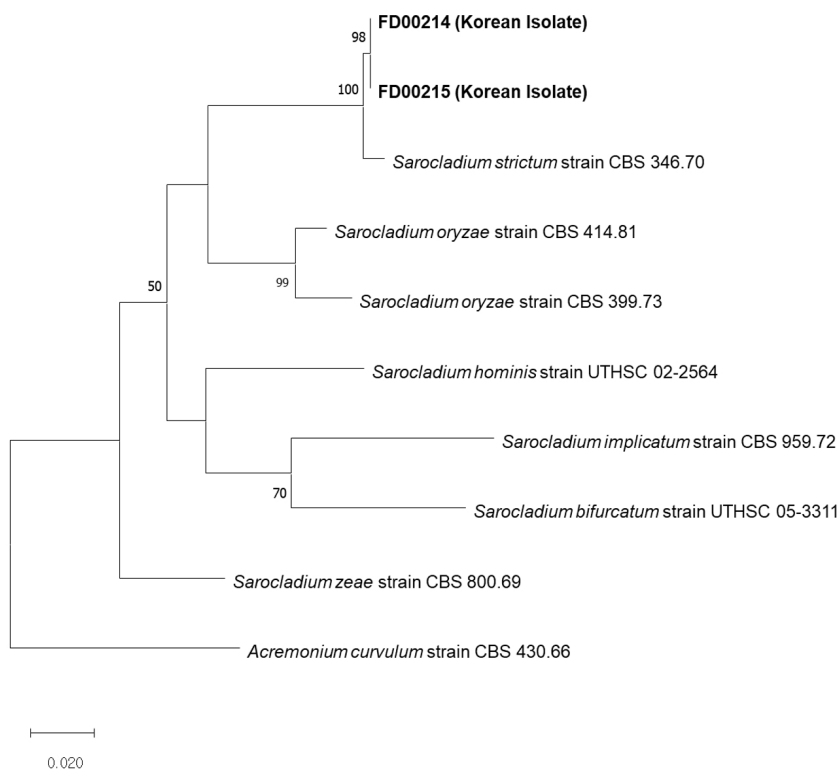


Fig. 3. Maximum likelihood phylogenetic analyses based internal transcribed spacer (ITS), and actin gene (ACT) sequence. The studied *Sarocladium* isolates are shown in bold. The isolates formed a monophyletic group with *S. strictum* isolate CBS 346.70. *Acremonium curvulum* strain CBS 430.66 was used as an outgroup. Bootstrap value under 50% is not shown.

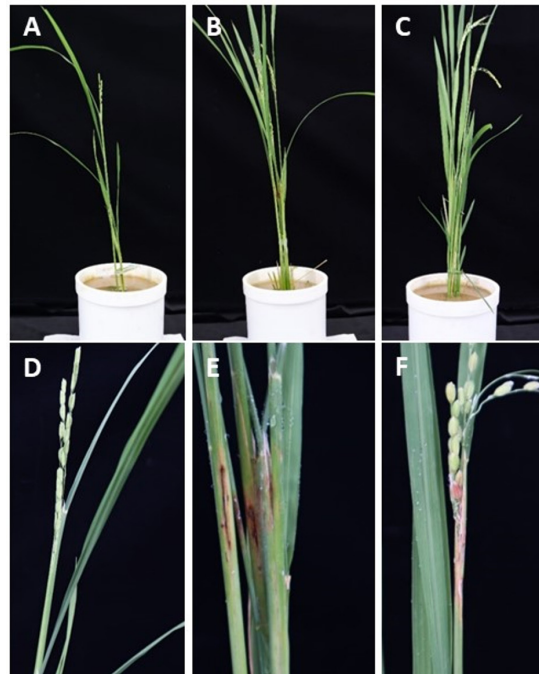


Fig. 4. Pathogenicity of *Sarocladium strictum* FD00214 and FD00215 isolates to rice (*Oryza sativa*) by tiller assay inoculation. A and D, control; B and C, the symptoms infected by *S. strictum* FD00214; E and F, the symptoms infected by *S. strictum* FD00215.

ACKNOWLEDGEMENT

Funding: This study was supported by a grant from the Agenda Program (PJ016734) of the Rural Development Administration of the Republic of Korea.

REFERENCES

1. Fahad S, Adnan M, Noor M, Arif M, Alam M, Khan IA, Ullah H, Wahid F, Mian IA, Jamal Y, et al. Major constraints for global rice production. In advances in rice research for abiotic stress tolerance. Sawston: Woodhead Publishing; 2019; p. 1-22.
2. Park JW, Choi SY, Hwang HJ, Kim YB. Fungal mycoflora and mycotoxins in Korean polished rice destined for humans. *Int J Food Microbiol* 2005;103:305-14.
3. Pearce DA, Bridge PD, Hawksworth DL. Species concept in *Sarocladium*, the causal agent of sheath rot in rice and bamboo blight. In major fungal diseases of rice: recent advances. Zuidholland: Springer Dordrecht; 2001; p. 285-92.
4. Hou YM, Zhang X, Zhang NN, Naklumpa W, Zhao WY, Liang XF, Zhang R, Sun GY, Gleason ML. Genera *Acremonium* and *Sarocladium* cause brown spot on bagged apple fruit in China. *Plant Dis* 2019;103:1889-901.
5. Shim HS, Hong SG, Hong SJ, Kim YK, Ye WH, Sung JM. Detection of fungi associated with rice ear blight from rice seeds in Korea. *Plant Dis* 2005;11:93-7.
6. Giraldo A, Gené J, Sutton DA, Madrid H, de Hoog GS, Cano J, Decock C, Crous PW, Guarro J. Phylogeny of *Sarocladium* (*Hypocreales*). *Pers Mol Phylogeny Evol Fungi* 2015;34:10-24.

7. Abdollahi AS, Fotouhifar K. New reports of endophytic fungi associated with cherry (*Prunus avium*) and sour cherry (*Prunus cerasus*) trees in Iran. *Mycol Iran* 2016;3:75-85.
8. White TJ, Bruns TD, Lee S, Taylor J. Amplification and direct sequencing of fungal ribosomal RNA genes for phylogenetics. PCR protocols: a guide to methods and applications. In: Innis MA, Gelfand DH, editors. London: Academic Press; 1990; p. 315-22.
9. Voigt K, Wöstemeyer J. Reliable amplification of actin genes facilitates deep-level phylogeny. *Microbiol Res* 2000;155:179-95.
10. O'Donnell K, Kistler HC, Cigelnik E, Ploetz RC. Multiple evolutionary origins of the fungus causing Panama disease of banana: concordant evidence from nuclear and mitochondrial gene genealogies. *Proceedings of the National Academy of Sci* 1998;95:2044-9.
11. Kumar S., Stecher G., Li M., Knyaz C., Tamura K. MEGA X: molecular evolutionary genetics analysis across computing platforms. *Mol Bio Evol* 2018;35:1547-9.
12. Tamura K., Stecher G., Kumar S. MEGA11: molecular evolutionary genetics analysis version 11. *Mol Bio Evol* 2021;38:3022-7.
13. Pushpam R, Ramamoorthy V, Nithya N, Nasrin SF, Meena E, Parthiban VK, Pillai MA. Identification of suitable rice cultivar for sheath rot disease resistance by artificial screening in the germplasm. *J Pharmacogn Phytochem* 2020;9:1533-6.
14. Tagne A, Neergaard E, Hansen HJ. The C. Studies of host—pathogen interaction between maize and *Acremonium strictum* from Cameroon. *Eur J Plant Pathol* 2002;108:93-102.
15. Racedo J, Salazar SM, Castagnaro AP, Diaz Ricci JC. A strawberry disease caused by *Acremonium strictum*. *Eur J Plant Pathol* 2013;137:649-54.
16. Ershad D, Zare R. Brief history of mycology in Iran. *Mycol Iran* 2014;1:53-63.