

***Thanatus arcticus* Thorell, 1872 (Araneae: Philodromidae) new to the Korean spider fauna**

Sue Yeon Lee¹, Jung Sun Yoo², Chang Moon Jang³ and Seung Tae Kim^{1,*}

¹Life and Environment Research Institute, Konkuk University, Seoul 05029, Republic of Korea

²Species Diversity Research Division, National Institute of Biological Resources, Incheon 22689, Republic of Korea

³Division of Life Sciences, College of Life Sciences and Bioengineering, Incheon National University, Incheon 22012, Republic of Korea

*Correspondent: stkim2000@hanmail.net

Philodromidae Thorell, 1869 is one of the most diversified and largest families comprising 522 species in 29 genera within the order Araneae Clerck, 1757. The genus *Thanatus* C. L. Koch, 1837 comprise 99 species of the family and four species of the genus *Thanatus* (Philodromidae) have been recorded in Korea: *T. coreanus* Paik, 1979, *T. miniaceus* Simon, 1880, *T. nipponicus* Yaginuma, 1969, and *T. vulgaris* Simon, 1870. Two females of *T. arcticus* Thorell, 1872 were collected by sweep net between the shrubs in mountainous mixed forests from Mt. Chiaksan National Park, Wonju-si, Gangwon-do and Mt. Naejangsan National Park, Jangseong-gun, Jeollanam-do. The present study describes *T. arcticus* with measurements and taxonomic illustrations.

Keywords: Araneae, description, Korea, Philodromidae, *Thanatus arcticus*

© 2023 National Institute of Biological Resources

DOI:10.12651/JSR.2023.12.4.277

INTRODUCTION

Philodromidae Thorell, 1869 is one of the most diversified and largest families comprising 522 species in 29 genera within the order Araneae Clerck, 1757. The genus *Thanatus* C. L. Koch, 1837 comprise 99 species of the family and four species have been recorded in Korea: *T. coreanus* Paik, 1979, *T. miniaceus* Simon, 1880, *T. nipponicus* Yaginuma, 1969, and *T. vulgaris* Simon, 1870 (Yoo *et al.*, 2015; WSC, 2023). Two females of *T. arcticus* Thorell, 1872 were collected by sweep net between the shrubs in mixed forests during the seasonal survey of mountainous spider fauna in 2018. Present study describes female of *T. arcticus* with a measurement and taxonomic illustrations. Specimens were collected by sweep net on the leaves of shrubs of and preserved in 98% ethyl alcohol and external morphology was examined under a Leica S8APO (Singapore) stereomicroscope. Images were captured with a Dhyana 400DC zoom digital camera (China) mounted on a Leica S8APO and assembled using Helicon Focus 8.2.0 image stacking software (Khmelik *et al.*, 2006). Measurements of body parts were made with an ocular micrometer and are recorded in millimeters. Internal genitalia of females were removed and treated in 10%

KOH for 2 hours before illustration. Leg measurements are shown as: Total length (femur, patella, tibia, metatarsus, tarsus). Morphological terminology follows Logunov (1996). Specimens examined are deposited in the National Institute of Biological Resources (NIBR), Incheon, South Korea.

TAXONOMIC ACCOUNT

Family Philodromidae Thorell, 1869

Genus *Thanatus* C. L. Koch, 1837

Diagnosis. Male palp: cymbium with variable spines on the ventral tip and dorsal surface; tibia rather short, retrolateral tibial apophysis (RTA) developed, ventral tibial apophysis (VTA) reduced and formed a ridge or cusp extending from the base retrolateral tibial apophysis; embolus hooked, not spirally ridged, usually originated from the distinguishable base at distal end of tegulum (except *T. vulgaris*, where the base of embolus indistinguishable). Female epigynum: median septum broad or narrow, usually flat (except *T. vulgaris*, where it is concave), lateral guide pocket situated on the both sides of median septum, with

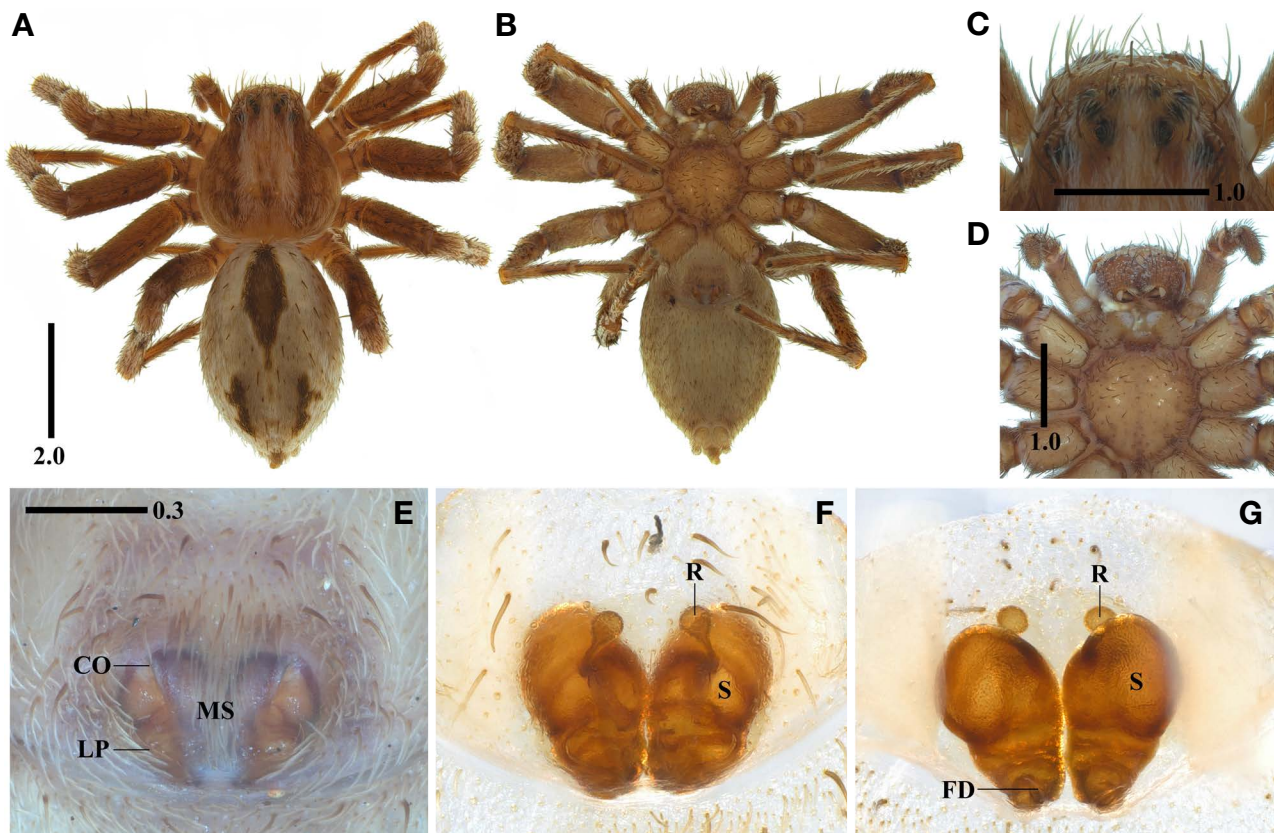


Fig. 1. *Thanatus arcticus* Thorell, 1872, female: A. Habitus, dorsal view; B. *Ditto*, ventral view; C. Eye area from above; D. Sternum; E. Epigynum, ventral view; F. Internal genitalia, ventral view; G. *Ditto*, dorsal view (CO = copulatory opening, FD = fertilization duct, LP = lateral guide pocket, MS = median septum; R = receptaculum, S = spermatheca). Scale bars in mm.

auriculate part or not; copulatory opening slit-shaped; spermatheca kidney-shaped, slender to broad, smooth or grooved; receptaculum visible anteriorly to medially on spermatheca, duct of receptaculum unfree and contained within spermatheca (Dondale *et al.*, 1964; Schick, 1965; Levy, 1977; Dondale and Redner, 1978).

Type species. *Araneus fonnycinus* Clerck, 1757.

***Thanatus arcticus* Thorell, 1872 (Fig. 1)**

북방창계거미 (신칭)

Thanatus arcticus Thorell, 1872: 157; Lenz, 1897: 76; Sørensen, 1898: 225; Fedotov, 1912: 463; Kulczyński, 1916: 24; Holm, 1958: 530; Dondale, Turnbull & Redner, 1964: 651; Holm, 1967: 81; Holm, 1968: 205; Hauge, 1976: 122; Dondale & Redner, 1978: 119; Marusik, 1991: 50; Logunov, 1996: 147; Almquist, 2006: 469; Tang & Wang, 2008: 78; Ono & Ban, 2009: 476; Pajunen, 2009: 86; Zhang, Peng & Zhang, 2022: 264; Marusik & Szűts, 2023: 95.

Thanatus mediocris Kulczyński, 1908: 66; Logunov, 1996: 135.

Thanatus lapponicus Jackson, 1932: 109.

Thanatus kolymensis Marusik, 1991: 48; Marusik &

Kovblyuk, 2011: 209.

Specimens examined. 1♀, Mt. Chiaksan National Park, Hakgok-ri, Socho-myeon, Wonju-si, Gangwon-do, 4 May 2018 (Kim S.T. & Lee S.Y. leg.); 1♀, Namchang Valley, Mt. Naejangsan National Park, Sinseong-ri, Bukhamaeon, Jangseong-gun, Jeollanam-do, 16 May 2018 (Kim S.T. & Lee S.Y. leg.).

Description. Female. Total length 6.70. Carapace: 2.83 long, 2.62 wide. AER 0.78, PER 1.19. Chelicera: 0.92 long, 0.51 wide. Endite: 0.50 long, 0.41 wide. Labium: 0.27 long, 0.44 wide. Sternum: 1.50 long, 1.38 wide. Legs: I 7.94 (2.37, 1.16, 1.82, 1.47, 1.12)/ II 8.94 (2.68, 1.29, 2.08, 1.70 1.19)/ III 7.80 (2.43, 1.15, 1.86, 1.47, 0.89)/ IV 8.76 (2.65, 1.16, 1.99, 1.86, 1.10). Palp: 2.57 (0.79, 0.49, 0.53, -, 0.76). Epigynum 0.53 long/0.67 wide.

Carapace pear-shaped, brown, clothed densely with short, recumbent, and white hairs, lateral sides dark, cervical and radial furrows distinct and dark brown, transverse fovea slightly depressed, longer than wide (Fig. 1A). Eight eyes enclosed with a dark patch in two rows, AER slightly recurved and PER strongly recurved, median

eyes slightly smaller than lateral eyes (Fig. 1C). Chelicera brown with two promarginal teeth (distal tooth larger than basal tooth). Endite pale brown, anterior margin truncated, longer than wide (Fig. 1B). Labium brown, wider than long (Fig. 1B). Sternum heart-shaped, brown with dark margin, convex, longer than wide, posterior tip round and not protruded between coxae IV, margin clothed sparsely with blackish brown recumbent bristles (Fig. 1D). Legs brown, robust and strongly developed, femora with two dark parallel lines on dorsal surface and two streaks on retrolateral surface, tibiae with a dark smudge proximally, leg spination: I (femur 0-0-0-1-1-1-2d/0v; tibia 0-1d/1-2-2v; metatarsus 0d/2-2-0v; tarsus 0d/0v); II (femur 0-1-1d/0v; tibia 0-1d/2-2-2v; metatarsus 0d/2-2-0v; tarsus 0d/0v); III (femur 0-1-1d/0v; tibia 1-2d/2-2-2v; metatarsus 0-1-3d/2-2-1v; tarsus 0d/0v); IV (femur 0-1-1d/0v; tibia 0-2-2d/1-2-2v; metatarsus 1d/2-2-3v; tarsus 0d/0v), leg formula II-IV-I-III. Abdomen ovoid, pale grayish brown, clothed densely with short white hairs, longer than wide, dorsum with a blackish brown longitudinal spear-shaped cardiac pattern occupying anterior half, a pair of blackish brown short streaks posteriorly, clothed sparsely with long blackish brown recumbent bristles (Fig. 1A), venter pale grayish brown, clothed densely with short white and brown hairs (Fig. 1B). Epigynum (Fig. 1E): round and simple, sclerotized, wider than long; median septum broad anteriorly narrowing posteriorly; lateral guide pocket auricular; anteromedial copulatory opening slit-shaped. Internal genitalia (Fig. 1F, G): spermatheca kidney-shaped and grooved posteriorly, almost contiguous each other; receptaculum spherical, approximately equal to receptaculum duct in length, protruded anteromesad.

Habitat. Mountainous mixed forest.

Distribution. Korea (new record), USA (Alaska), Canada, Greenland, Northern Europe, Russia (Europe to Far East), Kazakhstan, China, Japan.

ACKNOWLEDGEMENTS

This work was supported by a grant from the National Institute of Biological Resources (NIBR), funded by the Ministry of Environment (MOE) of the Republic of Korea (NIBR202203202).

REFERENCES

- Almqvist, S. 2006. Swedish Araneae, part 2 - families Dictynidae to Salticidae. *Insect Systematics & Evolution*, Supplement 63:285-601.
- Dondale, C.D., A.L. Turnbull and J.H. Redner. 1964. Revision of the Nearctic species of *Thanatus* C. L. Koch (Araneae: Thomisidae). *The Canadian Entomologist* 96(4):636-656. <https://doi.org/10.4039/Ent96636-4>
- Dondale, C.D. and J.H. Redner. 1978. The insects and arachnids of Canada, Part 5. The crab spiders of Canada and Alaska, Araneae: Philodromidae and Thomisidae. Research Branch Agriculture Canada Publication 1663:1-255.
- Fedotov, D. 1912. K fauně paukov Murmana i Novoj Zemli. Contribution à la faune des araignées de la côte Murmane et de Novaja Zemlja. *Ezhegodnik Zoologicheskago Muzeya Imperatorskoj Akademii Nauk* 16:449-474.
- Hauge, E. 1976. Araneae from Finnmark, Norway. *Norwegian Journal of Entomology* 23:121-125.
- Holm, Å. 1958. Spiders (Araneae) from Greenland. *Arkiv för Zoologi* 11:525-534.
- Holm, Å. 1967. Spiders (Araneae) from west Greenland. *Meddelelser om Grønland* 184(1):1-99.
- Holm, Å. 1968. A contribution to the spider fauna of Sweden. *Zoologiska Bidrag från Uppsala* 37:183-209.
- Jackson, A.R. 1932. Araneae and Opiliones. In: Results of the Oxford University Expedition to Lapland in 1930. *Proceedings of the Zoological Society of London* 1932(1):97-112.
- Khmelik, V.V., D. Kozub and A. Glazunov. 2006. Helicon Focus. Version 8.2.0. <http://www.heliconsoft.com/heliconfocus.html> [Accessed 3 March 2023].
- Kulczyński, W. 1908. Araneae et Oribatidae. Expeditionum rossicarum in insulas Novo-Sibiricas annis 1885-1886 et 1900-1903 susceptarum. *Zapiski Imperatorskoj Akademii Nauk St. Petersburg* (8) 18(7):1-97.
- Kulczyński, W. 1916. Araneae Sibiriae occidentalis arcticae. *Mémoires de l'Académie Impériale des Sciences de Petrograd* (8) 28(11):1-44.
- Lenz, H. 1897. Grönländische spinnen. *Bibliotheca Zoologica* 20(3):73-76.
- Levy, G. 1977. The philodromid spiders of Israel (Araneae: Philodromidae). *Israel Journal of Zoology* 26:193-229.
- Logunov, D.V. 1996. A critical review of the spider genera *Apollophanes* O. P.-Cambridge, 1898 and *Thanatus* C. L. Koch, 1837 in North Asia (Araneae, Philodromidae). *Revue Arachnologique* 11(13):133-202.
- Marusik, Y.M. and M.M. Kovblyuk. 2011. Spiders (Arachnida, Aranei) of Siberia and Russian Far East. KMK Scientific Press, Moscow, 344pp.
- Marusik, Y.M. and T. Szűts. 2023. On three dubious *Thanatus* species described by Władisław Kulczyński from Siberia (Aranei: Philodromidae). *Arthropoda Selecta* 32(1):94-97. <https://doi.org/10.15298/arthsel.32.1.09>
- Marusik, Y.M. 1991. Crab spiders of the family Philodromidae (Aranei) from east Siberia. *Zoologicheskii Zhurnal* 70(10):48-58.
- Ono, H. and M. Ban. 2009. Oxyopidae, Philodromidae. In: Ono, H. (ed.), *The spiders of Japan with keys to the families and genera and illustrations of the species*. Tokai University Press, Kanagawa. pp. 249-250, 476-481.
- Pajunen, T. 2009. *Thanatus arcticus* Thorell, 1872 (Araneae, Philodromidae), an addition to Finnish spider fauna. *Mem-*

- oranda Societatis pro Fauna et Flora Fennica 85:86-87.
- Schick, R.X. 1965. The crab spiders of California (Araneae, Thomisidae). Bulletin of the American Museum of Natural History 129(1):1-180.
- Sørensen, W. 1898. Arachnida Groenlandica (Acaris exceptis). Videnskabelige Meddelelser fra den Naturhistoriske Forening i Kjøbenhavn 1898:176-235.
- Tang, G.M. and J.J. Wang. 2008. One new species and two records of the genus *Thanatus* from Inner Mongolia, China (Araneae: Philodromidae). Acta Arachnologica Sinica 17: 76-80.
- Thorell, T. 1872. Om några Arachnider från Grönland. Öfversigt af Kongliga Vetenskaps-Akademiens Förhandlingar 29:147-166.
- World Spider Catalog. 2023. World Spider Catalog. Version 24. Natural History Museum Bern, online at <http://wsc.nmbe.ch>, accessed on 11 March 2023. <https://doi.org/10.24436/2>
- Yoo, J.S., S.Y. Lee, M.S. Im and S.T. Kim. 2015. Bibliographic checklist of Korean spiders (Arachnida: Araneae) ver. 2015. Journal of Species Research 1(Special Issue): 1-112. [https://doi.org/10.12651/JSR.2015.4\(S\).001](https://doi.org/10.12651/JSR.2015.4(S).001)
- Zhang, F., J.Y. Peng and B.S. Zhang. 2022. Spiders of Mt. Xiaowutai. Science Press, Beijing. 387pp.

Submitted: April 1, 2023

Accepted: August 9, 2023