

# Leptomeningeal Metastasis in Gliomas : Clinical Characteristics and Risk Factors

Jeyul Yang,<sup>1</sup> Ji-Woong Kwon,<sup>2</sup> Sang Hoon Shin,<sup>2</sup> Heon Yoo,<sup>2</sup> Kyu-Chang Wang,<sup>2</sup> Sang Heyon Lee,<sup>3</sup> Ho-Shin Gwak<sup>2,4</sup>

*Department of Neurosurgery,<sup>1</sup> Myongji Hospital, Goyang, Korea*

*Neuro-oncology Clinic,<sup>2</sup> National Cancer Center, Goyang, Korea*

*Department of Radiology,<sup>3</sup> National Cancer Center, Goyang, Korea*

*Department of Cancer Control,<sup>4</sup> Graduate School of Cancer Science and Policy, Goyang, Korea*

**Objective :** Our objective is to analyze the occurrence, clinical course and risk factors for glioma patients with leptomeningeal metastasis (LM) according to different metastasis patterns and clinical variables.

**Methods :** We retrospectively reviewed data from 376 World Health Organization (WHO) grade II–IV adult glioma patients who were treated in the National Cancer Center from 2001 to 2020. Patients who underwent surgery at other institutions, those without initial images or those with pathologically unconfirmed cases were excluded. LM was diagnosed based on magnetic resonance imaging (MRI) findings or cerebrospinal fluid (CSF) cytology. The metastasis pattern was categorized as nodular or linear according to the enhancement pattern. Tumor proximity to the CSF space was classified as involved or separated, whereas location of the tumor was dichotomized as midline, for tumors residing in the thalamus, basal ganglia and brainstem, or lateral, for tumors residing in the cerebral and cerebellar hemispheres.

**Results :** A total of 138 patients were enrolled in the study. A total of 44 patients (38%) were diagnosed with LM during a median follow-up of 9 months (range, 0–60). Among the clinical variables, tumor proximity to CSF space, the location of the tumor and the WHO grade were significant factors for LM development in univariate analysis. In multivariate analysis, the midline location of the tumor and WHO grade IV gliomas were the most significant factor for LM development. The hazard ratio was 2.624 for midline located gliomas (95% confidence interval [CI], 1.384–4.974;  $p=0.003$ ) and 3.008 for WHO grade IV gliomas (95% CI, 1.379–6.561;  $p=0.006$ ).

**Conclusion :** Midline location and histological grading are an important factor for LM in glioma patients. The proximity to the CSF circulation pathway is also an important factor for WHO grade IV glioma LM. Patients carrying high risks should be followed up more thoroughly.

**Key Words :** Glioma · Leptomeningeal metastasis · Risk factors · Magnetic resonance imaging.

• Received : July 13, 2022 • Revised : October 9, 2022 • Accepted : December 6, 2022

• Address for correspondence : **Ho-Shin Gwak**

Department of Cancer Control, Graduate School of Cancer Science and Policy, 323 Ilsan-ro, Ilsandong-gu, Goyang 10408, Korea  
Tel : +82-31-920-1666, Fax : +82-31-920-2798, E-mail : [nsghs@ncc.re.kr](mailto:nsghs@ncc.re.kr), ORCID : <https://orcid.org/0000-0001-7175-4553>

This is an Open Access article distributed under the terms of the Creative Commons Attribution Non-Commercial License (<http://creativecommons.org/licenses/by-nc/4.0>) which permits unrestricted non-commercial use, distribution, and reproduction in any medium, provided the original work is properly cited.

## INTRODUCTION

Leptomeningeal metastasis (LM) is a dissemination or invasion of tumor cells into the cerebrospinal fluid (CSF) space or the leptomeninges and usually represents a dismal prognosis<sup>7</sup>. Nevertheless, in glioma patients the clinical characteristics and risk factors for LM have not yet been revealed due to the rare occurrence<sup>10,16</sup>. Recently however, owing to prolongation of survival, technical developments such as image resolution, and more frequent testing, an increase in LM diagnoses in glioma patients has been reported<sup>2</sup>.

Regarding magnetic resonance imaging (MRI) findings, different patterns of LM in glioma patients have been reported<sup>2,21</sup>, such as disseminated or subependymal spread. However, it has not been described whether such different patterns reflect different clinical characteristics. Moreover, risk factors for LM based on clinical characteristics and interventions remain unknown. In the parenchymal brain metastasis of systemic cancer, it has been suggested that the proximity of brain metastasis or CSF contact during the operation increases the risk of LM development<sup>1,27</sup>. Thus, the location of gliomas in reference to the CSF circulation pathway might be related to the development of LM, but this question has not yet been investigated. Moreover, with the development of molecular diagnostics, a new classification of diffuse midline glioma (DMG) was created but the relationship with the development of LM has not been identified yet<sup>15</sup>.

As the treatment of choice for gliomas is primarily maximal safe resection<sup>8</sup>, numerous surgical methods are used to achieve the goal. Nevertheless, surgical spillage is one of the concerns during the surgical removal of cancer, including gliomas. Although there are controversial reports regarding whether the seeding of tumor cells is enhanced, ultrasonic aspirators are a common armamentarium used in the field<sup>9,22</sup>. Ventricular opening during tumor removal surgery is also reported to carry the risk of tumor seeding<sup>1,27,28</sup>.

In this study, we first investigated the proportional occurrence of LM in glioma patients according to both clinical and radiological characteristics and analyzed the risk factors for LM among glioma patients, especially those who were surgically treated. Second, we reviewed the clinical characteristics of LM in gliomas according to different metastasis patterns of nodular and linear spread.

## MATERIALS AND METHODS

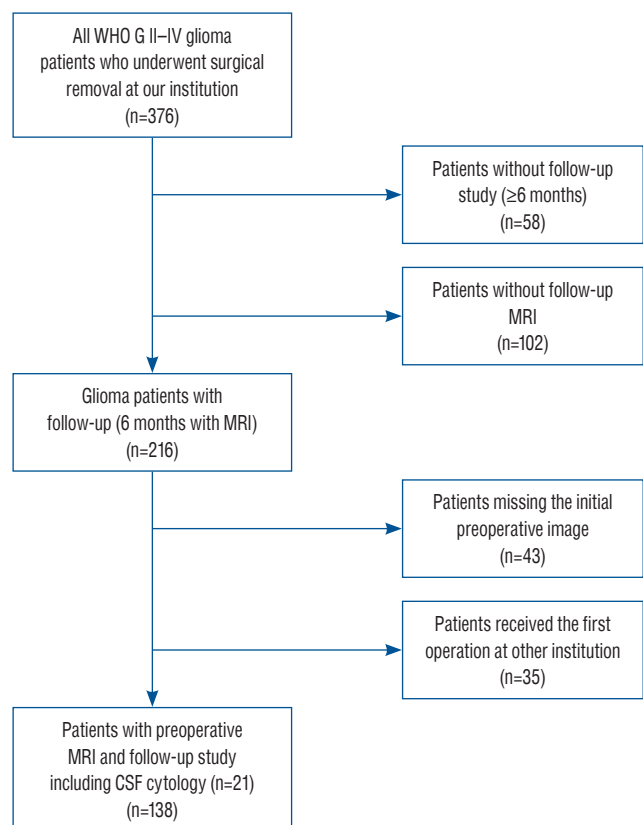
The present study was approved by the Institutional Review Board of National Cancer Center of Korea (IRB No. NCC2021-0236).

### Patient selection

We retrospectively reviewed the medical charts and radiological records of adult glioma patients who underwent surgical removal between January 2001 and December 2020 in our institution. A total of 376 World Health Organization (WHO) grade II to IV glioma patients underwent surgery for gliomas during the study period, and patients without a follow-up period of more than 6 months, those who underwent surgery at other institutions, or those whose initial images were missing were excluded (Fig. 1).

### Data collection

The data for age, sex, the Karnofsky performance scale



**Fig. 1.** Flow diagram of patient selection. WHO : World Health Organization, MRI : magnetic resonance imaging, CSF : cerebrospinal fluid.

(KPS) score<sup>18)</sup>, MRI findings, CSF cytology, the WHO grade, the time from surgery to LM diagnosis, LM-related symptoms, the extent of tumor resection, and adjuvant therapy such as chemotherapy or radiation therapy were collected and categorized for analysis. In addition, surgical factors, including the use of ultrasonic aspirators and the opening of ventricles during surgery, were reviewed as risk factors for LM, which was previously evaluated in metastatic brain tumor or glioma patients<sup>1,24)</sup>.

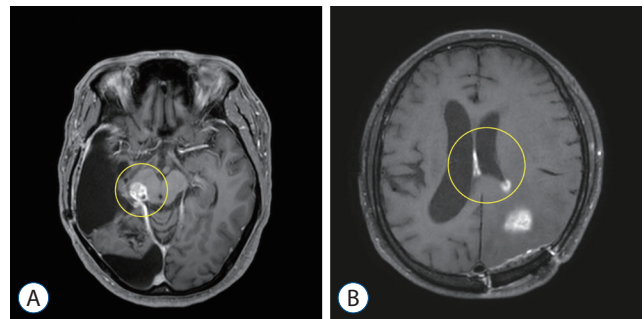
### MRI findings

Brain MRI was performed on all patients prior to surgery and images were reviewed by a neuroradiologist (S.H.L.). Spinal MRI was not routinely performed due to the low occurrence of spinal LM for gliomas<sup>4)</sup>. Only patients manifesting symptoms related to spinal LM, such as urinary difficulty or low extremity pain, were selected for spinal MRI. The MRI sequence included T1-, T2- and T1- with gadolinium enhancement. Axial, coronal and sagittal images were reviewed. The tumor proximity to the CSF circulation pathway was defined with the same criteria as a previous study<sup>1)</sup>: 1) involved: the tumor was in contact with the pial surface or ventricular wall without intervening brain parenchyma, and/or was accompanied by pial or ependymal enhancement over the tumor and 2) separated: the tumor was not in contact with the pial surface or ventricular wall and was separated by brain parenchyma, as shown in Fig. 2. The location of the tumor was dichotomized as midline for tumors residing in the thalamus, basal ganglia and brainstem, or lateral for tumors residing in the cerebral and cerebellar hemispheres. Tumor volume was calculated using the diameter

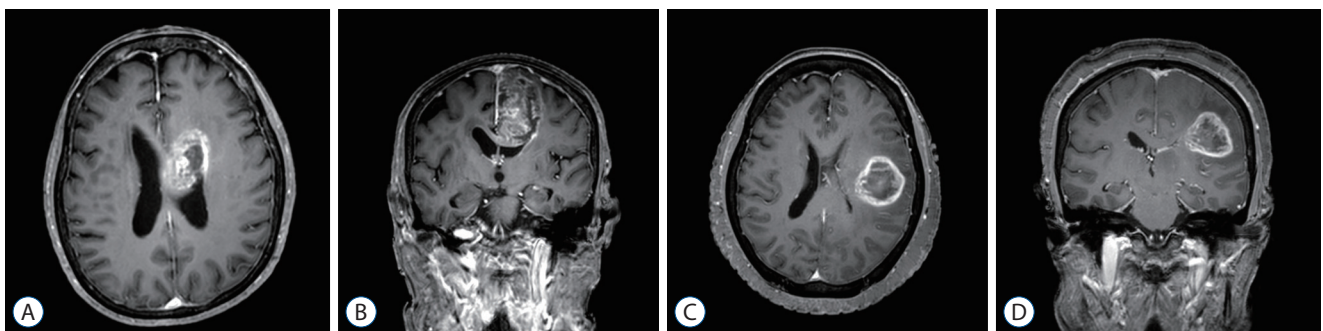
method ABC/2, which are greatest diameter of the tumor in axial plane (A), diameter of the tumor perpendicular in the axial plane (B), and multiplication value of the numbers of MRI slices and thickness of each slice (C)<sup>26)</sup>. The extent of resection (EOR) was analyzed by MRI 48 hours postoperatively and was categorized as gross total resection (GTR) or non-GTR.

### Diagnosis of LM

The diagnosis of LM was made by gadolinium-enhanced MRI<sup>12)</sup> or CSF cytology. The date of LM diagnosis was calculated from the earliest date that was noted positive by either MRI or CSF cytology. If the LM diagnosis date preceded the surgery, the date of surgery was defined as the date of LM diagnosis. The extent of LM was categorized as nodular or linear by enhancement pattern (Fig. 3). Nodular LM was defined as dot-shaped enhancement, whereas linear LM was defined



**Fig. 3.** Different leptomeningeal metastasis patterns of gliomas on magnetic resonance imaging. “Nodular” leptomeningeal metastasis shows dot-shaped enhancement (A), whereas (B) “linear” leptomeningeal metastasis shows disseminated or diffuse enhancement along the leptomeningeal surface. Lesions are circled in yellow.



**Fig. 2.** The tumor proximity to the cerebrospinal fluid pathway. Axial (A) and coronal (B) images of “involved” proximity. “Involved” proximity was defined as when the tumor was in contact with the pial surface or ventricular wall without intervening brain parenchyma and/or accompanied by pial or ependymal enhancement over the tumor. Axial (C) and coronal (D) images of “separated” proximity. “Separated” proximity was defined as when the tumor was not in contact with the pial surface or ventricular wall and was separated by brain parenchyma.

as disseminated enhancement.

LM-related symptoms were defined as symptoms that were solely caused by LM and not by other anatomical or pathological causes. Such symptoms included manifestations of increased cranial pressure caused by communicating hydrocephalus, cranial neuropathy without other space-occupying lesions, or radiculopathy that was not related to other primary spine diseases.

### Statistical analysis

SPSS Statistics version 18 (SPSS Inc., Chicago, IL, USA) was

used for statistical analyses. Comparisons were made according to the presence and extent pattern of LM. The chi-square test or Fisher's exact test was used to compare categorical and ordinal variables. Student's t test or the Wilcoxon rank sum test was used for continuous variables. Kaplan-Meier analysis was used to estimate cumulative survival. The Cox proportional hazard model was used for univariate analysis and multivariate analysis to determine risk factors for LM. All analyses were two-sided, and a *p*-value <0.05 was considered significant. Factors with a *p*-value <0.05 in univariate analyses were selected for multivariate analyses.

**Table 1.** Incidence of glioma leptomeningeal metastases according to various clinical and radiological factors

Variable	Overall (n=138)	No LM (n=94)	LM (n=44)	<i>p</i> -value
Age at operation (years)	56.5 (23–88)	59 (26–88)	53 (23–82)	0.039
Sex				0.852
Male	80 (58.0)	55 (59.0)	25 (57.0)	
Female	58 (42.0)	39 (41.0)	19 (43.0)	
KPS at operation				0.110
<70	8	3 (3.0)	5 (11.0)	
≥70	130	91 (97.0)	39 (89.0)	
WHO grade				0.042
Grade IV	81 (58.0)	49 (52.0)	31 (70.0)	
Grade II, III	57 (42.0)	45 (48.0)	13 (30.0)	
MRI findings				
Tumor proximity to CSF pathway				0.001
Separated	93 (67.0)	72 (77.0)	21 (48.0)	
Involved	45 (33.0)	22 (23.0)	23 (52.0)	
Initial tumor location				<0.001
Midline	23 (17.0)	5 (5.0)	18 (41.0)	
Lateral	115 (83.0)	89 (95.0)	26 (59.0)	
Mean tumor volume in total (cm <sup>3</sup> )	50.0	45.9	58.8	0.116
Extent of resection				0.275
GTR	31 (23.0)	24 (26.0)	7 (16.0)	
Non-GTR	107 (77.0)	70 (74.0)	37 (84.0)	
CUSA				0.707
Used	87 (63.0)	58 (62.0)	29 (66.0)	
Not used	51 (37.0)	36 (38.0)	15 (34.0)	
Ventricular opening				0.141
Opened	35 (25.0)	20 (21.0)	15 (34.0)	
Not opened	103 (75.0)	74 (79.0)	29 (66.0)	

Values are presented as median (range) or number (%). LM : leptomeningeal metastasis, KPS : Karnofsky performance scale, WHO : World Health Organization, MRI : magnetic resonance imaging, CSF : cerebrospinal fluid, GTR : gross total resection, CUSA : cavitron ultrasonic surgical aspirator

## RESULTS

### Patients' characteristics according to LM development

A total of 138 patients met the eligibility criteria (Fig. 1). The overall demographic characteristics of these patients are shown in Table 1. The median age at surgery was 56.5 years (range, 23–88). Eighty patients (58%) were male, and 58 patients (42%) were female. The median follow-up duration was 19 months (range, 6–216). Eighty-one patients (58%) were diagnosed with WHO grade IV gliomas (79 glioblastomas, two gliosarcomas), while 57 patients (42%) were diagnosed with WHO grade II (eight oligodendrogliomas, 11 oligoastrocytomas) or III gliomas (18 anaplastic astrocytomas, nine anaplastic oligodendrogliomas, 11 anaplastic oligoastrocytomas). Spinal LM was found in four patients, and all the patients had

WHO grade IV gliomas (glioblastoma).

We analyzed whether there was any significant difference in clinical and radiological variables between the non-LM and LM groups. During the follow up period, 94 patients (68%) did not develop LM, whereas 44 patients (32%) showed MRI finding compatible with LM. Among the patients with LM, nine patients (20%) had LM preoperatively at the time of glioma diagnosis. The median age of the patients without LM was 59 years (range, 26–88), which was significantly older than that of patients with LM (53 years; range, 23–82;  $p=0.039$ ). The number of patients with KPS of 70 or higher was not significantly different between non-LM and LM patients (91 vs. 39,  $p=0.110$ ). Pathological grading was significantly different between the two groups, as 49 out of 94 patients (52%) in the non-LM group had WHO grade IV gliomas, and 31 out of 44 (70%) patients with LM were WHO grade IV glioma patients

**Table 2.** Clinical and radiological characteristics according to LM patterns on MRI

Variable	Overall (n=44)	Pattern of LM		p-value
		Nodular (n=25)	Linear (n=19)	
Age at operation (years)	53 (23–82)	49 (23–78)	57 (36–82)	0.048
Sex				0.900
Male	25 (57.0)	14 (56.0)	11 (44.0)	
Female	19 (43.0)	11 (44.0)	8 (42.0)	
KPS at operation				0.149
<70	5 (11.0)	1 (4.0)	4 (21.0)	
≥70	39 (89.0)	24 (96.0)	15 (79.0)	
LM-related symptoms				0.328
No	29 (66.0)	18 (72.0)	11 (38.0)	
Yes	15 (34.0)	7 (28.0)	8 (53.0)	
WHO grade				0.797
Grade IV	31 (70.0)	18 (72.0)	13 (42.0)	
Grade II, III	13 (30.0)	7 (28.0)	6 (46.0)	
MRI findings				
Tumor proximity to CSF pathway				1.000
Separated	3 (7.0)	2 (8.0)	1 (5.0)	
Involved	41 (93.0)	23 (92.0)	18 (95.0)	
Initial tumor location				0.046
Midline	18 (41.0)	7 (28.0)	11 (58.0)	
Lateral	26 (59.0)	18 (72.0)	8 (42.0)	
Mean tumor volume in total (cm <sup>3</sup> )	58.8	49.7	70.7	0.131

Values are presented as median (range) or number (%). LM : leptomeningeal metastasis, MRI : magnetic resonance imaging, KPS : Karnofsky performance scale, WHO : World Health Organization, CSF : cerebrospinal fluid

( $p=0.042$ ).

Regarding MRI findings, both the tumor proximity to the CSF space and location of the tumor differed significantly between the two groups. Twenty-three percent of the patients without LM had a tumor involving the CSF space prior to surgery, whereas 52% of the 44 patients with LM had this finding ( $p=0.001$ ). There were a total of 23 midline located tumors, and LM was found in 78% (18 patients) of the patients whereas 23% of patients with lateral located tumors developed LM ( $p<0.001$ ). On the other hand, the tumor volume was not significantly different between the two groups.

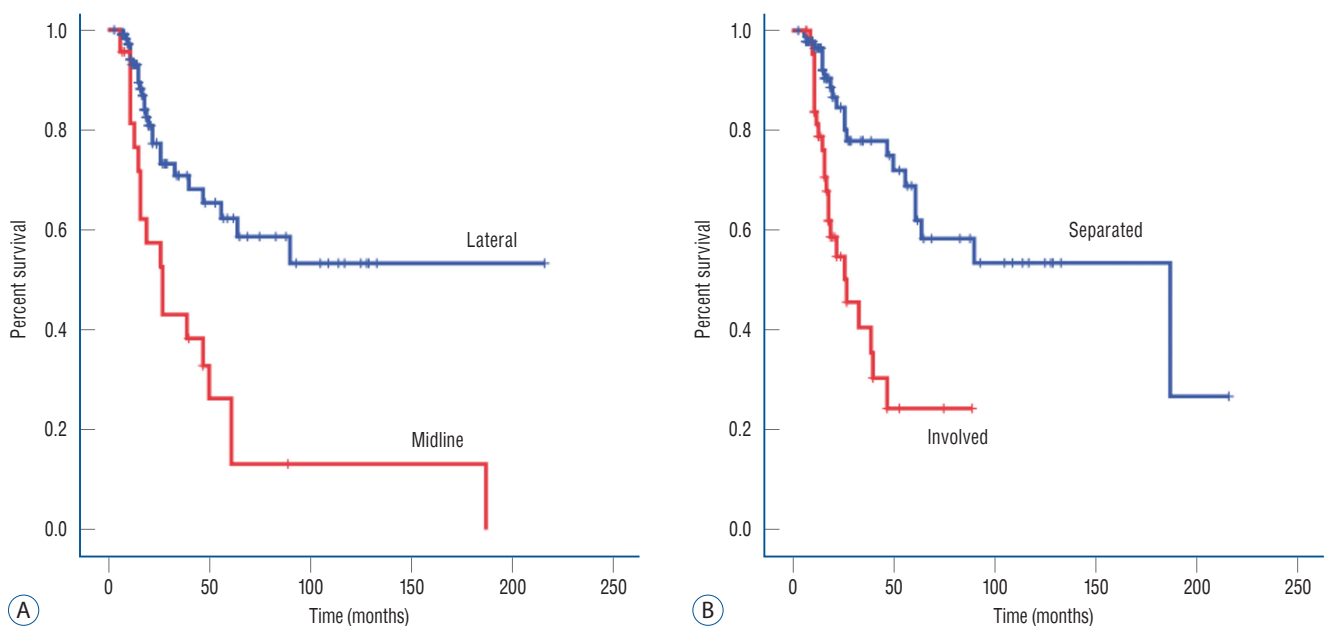
Variables such as the EOR, usage of the cavitron ultrasonic surgical aspirator (CUSA) or opening of ventricles during surgery were not significantly different between the non-LM and LM groups. GTR was achieved in 31 patients (23%), of which 24 patients (26%) developed LM and seven patients (16%) did not. The CUSA was used in 87 of overall patients (63%) : 62% (58 patients) of the patients who did not have LM and 66% (29 patients) of the patients who had LM. Among the patients without LM, 20 of the 94 patients (21%) had their ventricle opened during the surgery, whereas 15 patients (34%) with LM had their ventricle opened.

### Comparison of clinical and radiological variables according to LM pattern

For the next step, we investigated whether there was any clinical difference according to LM patterns (nodular vs. linear) in the LM group (Table 2). Among the LM patients, 25 (57%) had a nodular pattern, and 19 (43%) had a linear pattern. Patients with nodular LM were younger than the patients with linear LM (median age, 49 years vs. 57 years;  $p=0.048$ ). In addition, more gliomas with midline location showed linear LM (61%) whereas lateral located gliomas showed nodular pattern of LM more (69%,  $p=0.046$ ). However, presence of LM-related symptoms, the WHO grades (IV vs. II and III) and MRI findings such as tumor proximity to the CSF circulation pathway were not significantly different according to the metastasis pattern. LM-related symptoms were present in 15 of overall LM patients (34%), and no significant difference was found between the two groups of metastasis patterns. Common LM symptoms were cognitive impairment, headache, nausea, vomiting and gait disturbance. Other symptoms were urinary incontinence (two patients) and diplopia (one patient). Patients usually manifest multiple symptoms at presentation.

### Relative risk for LM development

Progression-free survival for LM was calculated by the time



**Fig. 4.** Kaplan-Meier survival curve of all patients for the development of leptomeningeal metastasis. Development of leptomeningeal metastasis was significantly different according to the location (A) and tumor involvement of cerebrospinal fluid space (B).

from the initial surgery to diagnosis of LM on MRI, and relative risk was compared by log rank test (Fig. 4). Among the clinical factors investigated, CSF proximity, location of the tumor and the WHO grade were significant factors for LM development in both univariate analysis (Table 3). In multivariate analysis, location of the tumor was the most significant factor affecting the LM development followed by WHO grade (95% confidence interval [CI], 1.384–4.974;  $p=0.003$ ). The midline located gliomas increased the development of LM with a hazard ratio (HR) of 2.624 (95% CI, 1.384–4.974,  $p=0.003$ ) compared with lateral located gliomas. The HR was 3.008 for WHO grade IV gliomas (95% CI, 1.379–6.561;  $p=0.006$ ).

Surgical factors such as the EOR and the use of the CUSA, did not significantly affect the risk of LM development. On the other hand, opening of the ventricle during surgery was significant in the univariate analysis ( $p=0.023$ ) but not in the multivariate analysis.

### Overall survival (OS) according to LM development and MRI patterns

The median OS after the surgery (the time of gliomas diagnosis) of the enrolled patients was 47 months (95% CI, 28.141–65.859). Patients without LM had a median survival of 62 months (95% CI, 27.572–96.428), while patients with LM had a median survival of 26 months (95% CI, 12.743–39.257), but this apparent difference failed to reach statistical significance

( $p=0.130$ ). According to the LM pattern, the median survival after LM diagnosis was 8 months for both nodular and linear metastases. However, OS after the surgery was shorter in patients with a linear metastasis pattern (26 months; 95% CI, 22.076–49.924) than in those with a nodular metastasis pattern (33 months; 95% CI, 9.124–56.876), although the difference did not reach statistical significance. In contrast, a tendency of shorter time to LM development was observed in linear metastasis pattern than nodular metastasis pattern ( $p=0.190$ ).

Considering the heterogeneity of our cohort for the WHO grade, which is known to be one of greatest factors affecting OS, we performed subgroup analysis for WHO grade IV gliomas. The median OS for WHO grade IV gliomas was 22 months (95% CI, 18.221–25.779), with 22 months for patients with LM (95% CI, 16.185–27.815) and 24 months (95% CI, 19.737–28.263) for patients without LM. The median survival after LM diagnosis was 4 months.

## DISCUSSION

### Clinical significance of LM in glioma patients

The occurrence of LM in glioma patients in the literature varies according to the definition of LM or the histological subtype/grade. Additionally, as most previous studies were a single institute retrospective studies, it is difficult to have a

**Table 3.** Overall relative risks for leptomeningeal metastasis in all gliomas (n=138)

Clinical factor	Univariate analysis			Multivariate analysis		
	HR	95% CI	p-value	HR	95% CI	p-value
Age	1.008	0.985–1.032	0.500			
Sex, male	1.073	0.586–1.962	0.820			
KPS	0.979	0.955–1.005	0.108			
Tumor volume	1.000	0.994–1.006	0.888			
Location, midline	2.979	1.621–5.472	<0.001	2.624	1.384–4.974	0.003
WHO grade, glioblastoma	3.884	1.940–7.779	<0.001	3.008	1.379–6.561	0.006
CSF proximity, involved	3.507	1.874–6.564	<0.001	1.723	0.848–3.502	0.133
EOR, GTR	0.689	0.306–1.551	0.369			
CUSA	0.920	0.492–1.719	0.794			
Ventricular opening	2.103	1.109–3.987	0.023	1.080	0.546–2.140	0.824

HR : hazard ratio, CI : confidence interval, KPS : Karnofsky performance scale, WHO : World Health Organization, CSF : cerebrospinal fluid, EOR : extent of resection, GTR : gross total resection, CUSA : cavitron ultrasonic surgical aspirator

population-based or prospectively collected LM occurrence of gliomas. The only population-based LM incidence of oligodendroglioma was reported by Roldán et al.<sup>25)</sup> and based on a population of 1.8 million over 19 years. They used the LM criteria of 2 or more of the following : 1) LM-related symptoms or signs; 2) MRI findings; and 3) CSF cytology, and 9/204 (3.9%) were diagnosed with LM from oligodendrogliomas. Recently, Andersen et al.<sup>2)</sup> reported the incidence of LM in glioma patients and different prognoses according to the histological subtype of gliomas in a single institution over 15 years period. The incidence of LM was 4.6% (188/4082 patients) using the diagnostic criteria of the clinical description of LM with either MRI findings or positive CSF cytology. Despite the fact that the interventions after LM diagnosis in these patients were not controlled, it seems obvious that the OS of the LM patients varied by original histology, as the median OS of glioblastoma patients was 3.8 months vs. that of oligodendroglioma patients, which was 10.8 months. In our study, the apparent LM occurrence was much higher than those in previous studies, as 44/138 patients (32%) were diagnosed with LM and considering the excluded patients, which mostly lacked information, the possible lowest proportional occurrence was 44/376 (12%). Another reason for our higher occurrence of LM was probably due to more generous diagnostic criteria of positive MRI findings regardless of LM-related symptoms and CSF cytology.

It has been reported that LM manifestation on MRI can be divided into linear spread (diffuse), nodular spread or mixed types. Bae et al.<sup>4)</sup> observed different MRI findings of spinal LM patients, with eight diffuse, one nodular and two mixed types, but they did not evaluate clinical differences according to MRI manifestation. Andersen et al.<sup>2)</sup> divided cerebral LM patients into two subgroups, disseminated and subependymal LM, as well as groups based on the original histology. As a result, the overall clinical characteristics, such as the time to development of LM, survival from LM diagnosis, OS after surgery and occurrence of related symptoms, did not differ between the subgroups<sup>2)</sup>. In contrast, they reported that the most important determining factor for the time to development of LM and survival of LM patients is the original histology. This is in line with our results, which showed no difference according to the metastasis pattern. The study did not analyze risk factors for LM, which was the goal of our study.

For spinal LM dissemination, the median OS after LM di-

agnosis has not increased much over the decades. Awad et al.<sup>3)</sup> reported a median survival after LM diagnosis of 3 months in 13 patients diagnosed with LM by myelogram or CSF cytology in 1986. Later, Bae et al.<sup>4)</sup> reported a median OS of 2.7±1.3 months in 11 patients with spinal leptomeningeal dissemination from various gliomas in 2011. In contrast to cerebral LM manifestations, these spinal LM patients all had LM-related symptoms, dissemination after the initial surgery for supratentorial gliomas, and dismal prognoses regardless of glioma subtype. In our study, the median OS of 3 months after diagnosis was apparently longer than those of previous studies. The difference probably came from our diagnostic criteria, and most (134/138) of our patients did not have spinal dissemination.

Prognostic factors for OS after LM diagnosis have not yet been determined. However, previous studies reported objective responses to chemotherapy or radiation in selected patients, and some of these responses lasted for quite a long period<sup>5,13,17,19)</sup>. Thus, we expected that proper treatment, including recently developed target inhibitors or immune therapy, could prolong patient OS and lessen patient suffering through future clinical trials.

### Risk factors for developing LM in glioma patients

We were able to analyze the clinical characteristics according to LM and their risk factors in glioma patients. Thirty-two percent of the patients with WHO grade II–IV gliomas developed LM in our cohort. Patients with LM were younger than non-LM patients, whereas the performance scale was equal. The younger age of LM patients compared to non-LM patients is a common feature reported in previous papers<sup>3,11,20)</sup>.

Andersen et al.<sup>2)</sup> tried to evaluate whether any clinical or molecular characteristics affect the risk for LM. However, they failed to obtain the HR of each variable for LM development and described that no variables were identified as a risk factor. Our study is the first attempt to evaluate clinical variables for the development of LM using HRs, although we could not balance these variables for comparison in this retrospective study. With regard to preoperative MRI, midline location and higher histological grade (IV vs. II/III) showed a significantly higher risk for LM. In addition, gliomas involving the CSF circulation pathway and opening of ventricles during surgery were another important factor for LM.

Previous studies have verified that surgical spillage caused



by piecemeal resection, ultrasonic aspiration or ventricular opening to be a risk factor for LM development<sup>1,27,28</sup>. Roelz et al.<sup>24</sup> reported that ventricular opening during surgery is a risk factor for LM. Similarly, Bae et al.<sup>4</sup> reported that all 11 patients who were enrolled in the study had their ventricle opened during surgery showed spinal LM. On the other hand, to see the surgical effect, surgical procedures such as those using CUSA should be included. A previous study with brain metastasis showed that surgery increased the risk of LM compared with radiosurgery<sup>14</sup>, and the use of CUSA increased the risk for LM<sup>1</sup>. However, in our study, surgical spillage-related factors of the use of the CUSA failed to show a significant influence on LM development (Table 3).

Qiu et al.<sup>23</sup> reported MRI characteristics of H3K27M-mutant DMG. Although our study could not perform molecular analysis to verify H3-K27M mutation, non-midline location of H3K27M-mutant DMGs are reported to be rare, implying high proportion of H3-K27M mutation in our cohort<sup>23</sup>. In the study, 11/66 (17%) of the patients showed CSF dissemination, which is lower than that of our cohort. This is probably due to the short time period of the study. Nevertheless, the proportion of LM in H3-K27M mutant DMG was higher compare to previous studies which is in line with our study<sup>2,6</sup>. Further study regarding the role of H3-K27M in LM development is mandatory.

Ventricular opening was significant only in the univariate analysis, but not in multivariate analysis, suggesting that the LM that were thought to be caused by ventricular opening is in fact a secondary effect by tumor proximity to CSF space. It is more likely for the ventricle to be opened if the tumor lies more closely to the ventricle. Although we cannot deny the possibility of mechanical spillage contributing to the development of LM, our present data implies that the tumor involvement to the CSF space has more influence on the development of LM than ventricular opening during surgery. Hence, based on our results, maximal safe resection of the tumor should not be avoided due to fear of LM occurrence. In this context, CSF proximity was in accordance with an increased chance of cancer cell spillage in the CSF space. Roelz et al.<sup>24</sup> verified that the distance of the tumor to the ventricle was also a significant risk factor in the univariate analysis of a previous report. This is in line with our results in that the relation of the tumor to the CSF space is important for LM progression.

## Limitations

The limitations of the current study are that it was based on a retrospective analysis in a single institution. However, the demographic characteristics in our study were similar to the trends of other reports, which supports the reliability of our results. Another limitation is that our analysis did not include molecular studies. Because majority of the patients underwent surgery before the revision of the WHO grade and the rise of molecular analysis, molecular study was not performed on routine basis. Nevertheless, because MRI is a more common and simple examination that can be performed, screening patients with a higher risk of LM by MRI findings would be more helpful in the clinical field compare to molecular studies.

## CONCLUSION

LM in glioma patients is no longer a rare complication, owing to prolonged survival. Histological grading is the most important factor for LM. The midline location, WHO grade IV gliomas, and proximity to the CSF circulation pathway and is the most important factor for the development of LM in WHO grade IV glioma patients. Clinicians should be aware of and closely follow up patients who carry a high risk for LM.

## AUTHORS' DECLARATION

### Conflicts of interest

No potential conflict of interest relevant to this article was reported.

### Informed consent

This type of study does not require informed consent.

### Author contributions

Conceptualization : HSG; Data curation : JY, SHL, HSG; Formal analysis : JY, HSG; Funding acquisition : HSG; Writing - original draft : JY; Writing - review & editing : JY, JWK, SHS, HY, KCW, SHL, HSG

### Data sharing

None

## Preprint

None

## ORCID

Jeyul Yang <https://orcid.org/0000-0002-3882-8984>  
Ji-Woong Kwon <https://orcid.org/0000-0002-5777-5398>  
Sang Hoon Shin <https://orcid.org/0000-0002-8404-1162>  
Heon Yoo <https://orcid.org/0000-0002-9223-4300>  
Kyu-Chang Wang <https://orcid.org/0000-0001-7440-6650>  
Sang Heyon Lee <https://orcid.org/0000-0002-9929-3127>  
Ho-Shin Gwak <https://orcid.org/0000-0001-7175-4553>

## • Acknowledgements

This work was supported by a grant (2210650-2) from the National Cancer Center, Korea. The sponsor had no role in the design or conduct of this research.

## References

1. Ahn JH, Lee SH, Kim S, Joo J, Yoo H, Lee SH, et al. : Risk for leptomeningeal seeding after resection for brain metastases: implication of tumor location with mode of resection. **J Neurosurg** **116** : 984-993, 2012
2. Andersen BM, Miranda C, Hatzoglou V, DeAngelis LM, Miller AM : Leptomeningeal metastases in glioma: the Memorial Sloan Kettering Cancer Center experience. **Neurology** **92** : e2483-e2491, 2019
3. Awad I, Bay JW, Rogers L : Leptomeningeal metastasis from supratentorial malignant gliomas. **Neurosurgery** **19** : 247-251, 1986
4. Bae JS, Yang SH, Yoon WS, Kang SG, Hong YK, Jeun SS : The clinical features of spinal leptomeningeal dissemination from malignant gliomas. **J Korean Neurosurg Soc** **49** : 334-338, 2011
5. Bae JW, Hong EK, Gwak HS : Response of leptomeningeal dissemination of anaplastic glioma to temozolomide: experience of two cases. **Brain Tumor Res Treat** **5** : 99-104, 2017
6. Bordignon KC, Neto MC, Ramina R, de Meneses MS, Zazula AD, de Almeida LG : Patterns of neuroaxis dissemination of gliomas: suggestion of a classification based on magnetic resonance imaging findings. **Surg Neurol** **65** : 472-477; discussion 477, 2006
7. Brower JV, Saha S, Rosenberg SA, Hullett CR, Ian Robins H : Management of leptomeningeal metastases: prognostic factors and associated outcomes. **J Clin Neurosci** **27** : 130-137, 2016
8. Bush NA, Chang SM, Berger MS : Current and future strategies for treatment of glioma. **Neurosurg Rev** **40** : 1-14, 2017
9. Cinalli G, Imperato A, Mirone G, Di Martino G, Nicosia G, Ruggiero C, et al. : Initial experience with endoscopic ultrasonic aspirator in purely neuroendoscopic removal of intraventricular tumors. **J Neurosurg Pediatr** **19** : 325-332, 2017
10. Dardis C, Milton K, Ashby L, Shapiro W : Leptomeningeal metastases in high-grade adult glioma: development, diagnosis, management, and outcomes in a series of 34 patients. **Front Neurol** **5** : 220, 2014
11. Eade OE, Ulrich H : Metastasising gliomas in young subjects. **J Pathol** **103** : 245-256, 1971
12. Freilich RJ, Krol G, Deangelis LM : Neuroimaging and cerebrospinal fluid cytology in the diagnosis of leptomeningeal metastasis. **Ann Neurol** **38** : 51-57, 1995
13. Hansen N, Wittig A, Hense J, Kastrup O, Gizewski ER, Van de Nes JA : Long survival of primary diffuse leptomeningeal gliomatosis following radiotherapy and temozolomide: case report and literature review. **Eur J Med Res** **16** : 415-419, 2011
14. Jung JM, Kim S, Joo J, Shin KH, Gwak HS, Lee SH : Incidence and risk factors for leptomeningeal carcinomatosis in breast cancer patients with parenchymal brain metastases. **J Korean Neurosurg Soc** **52** : 193-199, 2012
15. Louis DN, Giannini C, Capper D, Paulus W, Figarella-Branger D, Lopes MB, et al. : cIMPACT-NOW update 2: diagnostic clarifications for diffuse midline glioma, H3 K27M-mutant and diffuse astrocytoma/anaplastic astrocytoma, IDH-mutant. **Acta Neuropathol** **135** : 639-642, 2018
16. Mandel JJ, Yust-Katz S, Cachia D, Wu J, Liu D, de Groot JF, et al. : Leptomeningeal dissemination in glioblastoma; an inspection of risk factors, treatment, and outcomes at a single institution. **J Neurooncol** **120** : 597-605, 2014
17. Michotte A, Chaskis C, Sadones J, Veld PI, Neyns B : Primary leptomeningeal anaplastic oligodendroglioma with a 1p36-19q13 deletion: report of a unique case successfully treated with temozolomide. **J Neurol Sci** **287** : 267-270, 2009
18. Mor V, Laliberte L, Morris JN, Wiemann M : The Karnofsky performance status scale. An examination of its reliability and validity in a research setting. **Cancer** **53** : 2002-2007, 1984
19. Nandipati S, Demopoulos A : Leptomeningeal dissemination of anaplastic glioma: prolonged survival in two patients treated with temozolomide. **J Neurooncol** **105** : 663-665, 2011
20. Onda K, Tanaka R, Takahashi H, Takeda N, Ikuta F : Cerebral glioblastoma with cerebrospinal fluid dissemination: a clinicopathological study of 14 cases examined by complete autopsy. **Neurosurgery** **25** : 533-540, 1989
21. Parsa AT, Wachhorst S, Lamborn KR, Prados MD, McDermott MW, Berger MS, et al. : Prognostic significance of intracranial dissemination of glioblastoma multiforme in adults. **J Neurosurg** **102** : 622-628, 2005
22. Preston JK, Masciopinto J, Salamat MS, Badie B : Tumour cell dispersion by the ultrasonic aspirator during brain tumour resection. **Br J Neurosurg** **13** : 486-489, 1999
23. Qiu T, Chanchotisation A, Qin Z, Wu J, Du Z, Zhang X, et al. : Imaging characteristics of adult H3 K27M-mutant gliomas. **J Neurosurg** **133** : 1662-1670, 2020

24. Roelz R, Reinacher P, Jabbarli R, Kraeutle R, Hippchen B, Egger K, et al. : Surgical ventricular entry is a key risk factor for leptomeningeal metastasis of high grade gliomas. **Sci Rep** **5** : 17758, 2015
25. Roldán G, Chan J, Eliasziw M, Cairncross JG, Forsyth PA : Leptomeningeal disease in oligodendroglial tumors: a population-based study. **J Neurooncol** **104** : 811-815, 2011
26. Sreenivasan SA, Madhugiri VS, Sasidharan GM, Kumar RV : Measuring glioma volumes: a comparison of linear measurement based formulae with the manual image segmentation technique. **J Cancer Res Ther** **12** : 161-168, 2016
27. Suki D, Abouassi H, Patel AJ, Sawaya R, Weinberg JS, Groves MD : Comparative risk of leptomeningeal disease after resection or stereotactic radiosurgery for solid tumor metastasis to the posterior fossa. **J Neurosurg** **108** : 248-257, 2008
28. Suki D, Hatiboglu MA, Patel AJ, Weinberg JS, Groves MD, Mahajan A, et al. : Comparative risk of leptomeningeal dissemination of cancer after surgery or stereotactic radiosurgery for a single supratentorial solid tumor metastasis. **Neurosurgery** **64** : 664-676; discussion 674-976, 2009