

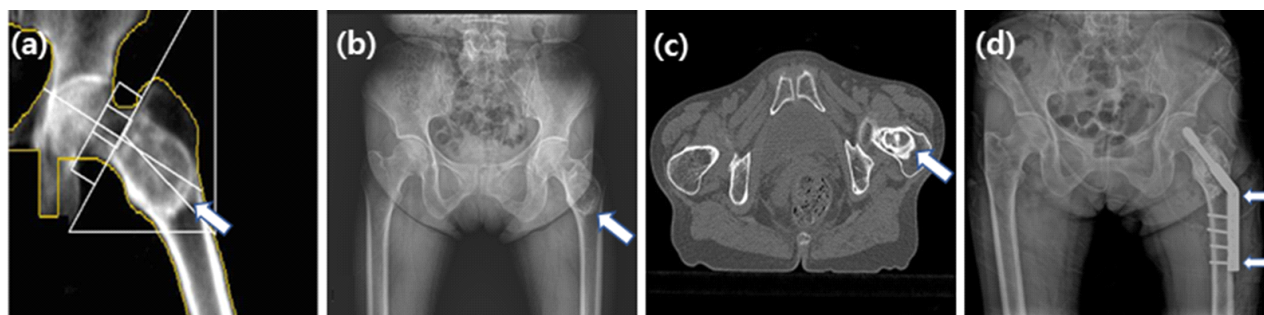
## Femoral Cystic Lesion in Bone Mineral Densitometry

Han-Kyung Seo, Do-Cheol Choi, Cheol-Min Shim and Jin-Hyeong Jo

*Department of Nuclear Medicine, Jeonbuk National University Hospital, Jeonju, Korea*

A 78-year-old female patient referred by the department of obstetrics and gynecology was recommended for orthopedic surgery because a cystic lesion was found in the left femoral proximal area in the bone mineral densitometry. CT scan and general X-ray performed in the orthopedic department found benign tumors later. Intra-medullary nail was operated. Curettage and bone graft were performed. Radiotechnologist is also important for the morphological observation of femur in the femoral BMD. It provides a lot of benefits to the patient.

**Key Words** Bone Mineral Densitometry, Cystic Lesion, Intra-Medullary Nail



**Fig. 1.** A lesion (arrow) was observed in proximal femur (a) in bone mineral densitometry conducted in December 2010. A lesion (arrow) was observed in proximal femur in the pelvis AP image (b) performed in February 2011. Probably benign bone tumor such as myxofibrous liposclerosing tumor was observed in proximal femur, intertrochanteric region in both hip CT (c) performed on March 2011. Intra-medullary nail (arrows) in the left femur neck and shaft was observed in a pelvis AP image (d) conducted on April 2011.

### REFERENCES

1. Torisu T, Chosa H, Kitano M. Rheumatoid synovial cyst of the hip joint. *Clin Orthop Relat Res* 1978; (137): 191-4.
2. Staple TW. Arthrographic demonstration of iliopsoas bursa extension of the hip joint. *Radiology* 1972; 102: 515-6.
3. Yukata K, Nakai S, Goto T, Ikeda Y, Shimaoka Y, Yamanaka I, et al. Cystic lesion around the hip joint. *World J Orthop*. 2015;6(9):688-704.
4. Feng H, Wang J, Xu J, Chen W, Zhang Y. The surgical management and treatment of metastatic lesions in the proximal femur: A mini review. *Medicine (Baltimore)*. 2016 ;95(28):1-6.
5. Henrik M, Svend S, Eilif L. Metastasis size in pathologic femoral fractures. *Acta Orthopaedica Scanddinavica*. 2009;80: 151-4.
6. Lee E, Choi JA. Associations between alpha angle and heniation Pit on MRI revisited in 185 asymptomatic hip joints. *Korean J Radiol* 2015; 16(6):1319-25.

• Corresponding Author : **Han-Kyung Seo**

• Department of Nuclear Medicine, Jeonbuk National University Hospital, 634-18 Keumam-dong, Duckjin-gu, Jeonju, Jeonbuk, 561-712, Korea

Tel: +82-63-250-2326, E-mail: shg@jbuh.co.kr

7. Guo Z, Xu L, Su YB, Cheng XG. Correlation between the prevalence of herniation pits and alpha angle of the hip:computed tomography evaluation in healthy chinese adults. BMC Musculoskelet Disord 2013;14:288.