

RESEARCH NOTE

Incidence of Beet Leaf Spot Caused by *Neocamarosporium betae* in Korea

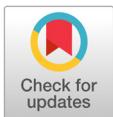
Gyo-Bin Lee, Hong-sik Shim, Weon-Dae Cho, and Wan-Gyu Kim*
Global Agro-Consulting Corporation, Suwon 16614, Korea

*Corresponding author: wgkim5121@naver.com

ABSTRACT

From June to August 2021, we surveyed diseases affecting beet (*Beta vulgaris* subsp. *vulgaris*) plants in Cheolwon, Hoengseong, and Pyeongchang regions in Gangwon Province, Korea. We observed severe leaf spot symptoms, such as brown to dark circular or irregular spots on the leaves, in plants. Disease incidence in the plant leaves in the fields investigated at the three locations ranged from 1 to 80%. Five single-spore isolates of *Phoma* sp. were obtained from the diseased leaves and identified as *Neocamarosporium betae* based on their cultural, morphological, and molecular characteristics. Three isolates of *N. betae* were subsequently tested to confirm their pathogenicity in beet plants via artificial inoculation. The tested isolates caused leaf spot symptoms in the inoculated plants, similar to those observed in the plants in the investigated fields. Therefore, our findings revealed *N. betae* as the pathogen causing beet leaf spot in Korea.

Keywords: Beet, *Beta vulgaris*, Leaf spot, *Neocamarosporium betae*



OPEN ACCESS

pISSN : 0253-651X
eISSN : 2383-5249

Kor. J. Mycol. 2023 March, 51(1): 63-68
<https://doi.org/10.4489/KJM.20230007>

Received: January 03, 2023

Revised: March 05, 2023

Accepted: March 09, 2023

© 2023 THE KOREAN SOCIETY OF MYCOLOGY.



This is an Open Access article distributed under the terms of the Creative Commons Attribution Non-Commercial License (<http://creativecommons.org/licenses/by-nc/4.0/>) which permits unrestricted non-commercial use, distribution, and reproduction in any medium, provided the original work is properly cited.

Beet (*Beta vulgaris* subsp. *vulgaris* L.), belonging to the family Amaranthaceae, is a biennial or perennial plant native to Azores, western Europe to the Mediterranean region, and India [1]. This plant is widely cultivated as a vegetable in various regions of Korea. From June to August 2021, we surveyed diseases affecting beet plants grown in Cheolwon, Hoengseong, and Pyeongchang regions in Gangwon Province, Korea. We observed severe leaf spot symptoms, such as brown to dark circular or irregular spots on the leaves, in plants (Fig. 1A and B). Three sites in each field and 100 leaves at each site were investigated to determine the disease incidence. Disease incidence on the leaves in the fields investigated at the three locations ranged from 1 to 80% (Table 1).

Leaves of beet plants with spot symptoms were collected from the investigated fields, and fungal isolates were obtained from diseased leaves, as previously described [2]. Most isolates were identified as *Phoma* sp. based on their morphological characteristics as well as those described by Boerema et al. [3]. Five single-spore isolates were obtained from the original isolates and used for further identification and pathogenicity tests.

To determine their cultural and morphological characteristics, all single-spore isolates were cultured on malt extract agar (MEA), oatmeal agar (OA), and potato dextrose agar (PDA) at 22°C for 14 days using the previously described methods [3, 4]. Average diameters of the 7-day-old colonies of the isolates grown on MEA, OA, and PDA in the dark were 5.3, 6.7, and 6.4 cm, respectively. Colonies on MEA exhibited

slightly irregular margins and olivaceous to dark olivaceous mycelia (Fig. 2A). Colonies on OA exhibited regular margins and olivaceous to grayish dark olivaceous mycelia (Fig. 2B). Colonies on PDA exhibited olivaceous to grayish olivaceous mycelia (Fig. 2C). NaOH spot test [3] results on 7-day-old MEA cultures of the isolates were negative.

Morphological characteristics of each isolate were determined using 30 pycnidia and 30 conidia from 14-day-old cultures on OA. Pycnidia were variable in size and shape, dark brown to black in color, mostly globose to subglobose, solitary or confluent, semi-immersed in media, from which a creamy conidial mass leaked (Fig. 2D and E), and measured 170–392 μm (av. 254 μm) in diameter. Conidia were aseptate, oblong to ellipsoidal (Fig. 2F), and measured 3.6–5.9 \times 2.0–4.0 μm (av. 4.7 \times 2.9 μm).

Table 1. Incidence of beet leaf spot in the investigated fields at three locations in Gangwon Province, Korea, in 2021.

| Location investigated | Period investigated | No. of fields investigated | No. of fields with disease | % diseased leaves ^a |
|-----------------------|---------------------|----------------------------|----------------------------|--------------------------------|
| Cheolwon | August | 1 | 1 | 30–80 |
| Hoengseong | June | 3 | 3 | 1–30 |
| Pyeongchang | June | 1 | 1 | 30–80 |

^aOne hundred leaves of beet plants in each field were investigated in triplicate.

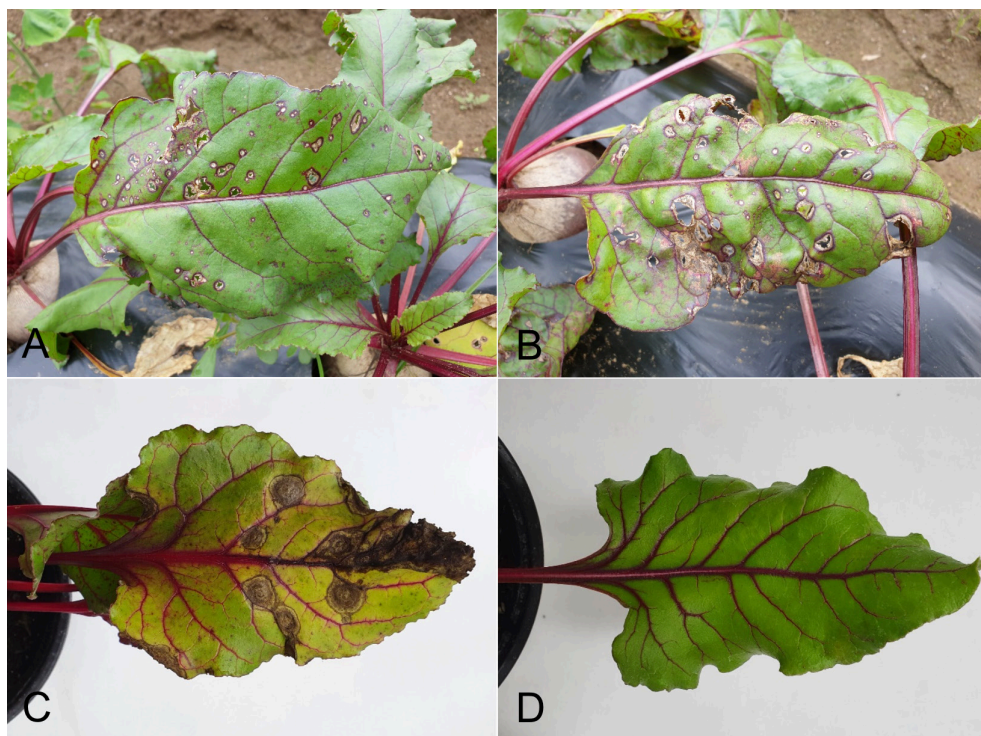


Fig. 1. Leaf spot symptoms in beet plants. A and B: Symptoms observed in the investigated fields. C: Symptoms observed in the plant artificially inoculated with a *Neocamarosporium betae* isolate in a pathogenicity test. D: A non-inoculated plant (control).

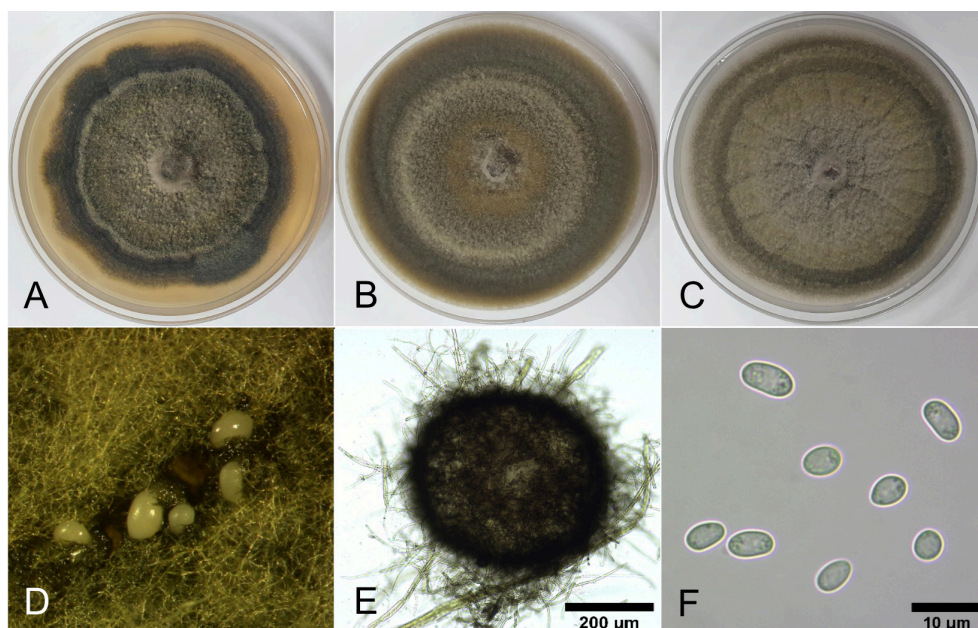


Fig. 2. Cultural and morphological features of the *Neocamarosporium betae* isolate from beet. Colonies of the *N. betae* isolate grown on malt extract agar (A), oatmeal agar (B), and potato dextrose agar (C) at 22°C for 14 days. Conidial exudate from pycnidia (D), a pycnidium (E), and conidia (F).

Cultural and morphological characteristics of all isolates were similar to those of *Phoma betae* A.B. Frank. [teleomorph: *Pleospora betae* (Berl.) Nevod.], as previously described [3]. However, a phylogenetic study reclassified *P. betae* as *Neocamarosporium betae* (Berl.) Ariyaw. and K.D. Hyde [5]. To determine the molecular characteristics of the isolates, partial large subunit nuclear ribosomal DNA (LSU) and RNA polymerase II (RPB2) regions of the isolates were investigated using LR0R [6] and LR7 [7], and RPB2-5f2 [8] and fRPB2-7cR [9], respectively. Genomic DNA of the isolates was extracted using the protocol described by Park et al. [10], with slight modifications. All polymerase chain reaction experiments were conducted as previously described [4]. Genomic DNA was sequenced using the primer sets from Bionics (Seoul, Korea). A phylogenetic tree was constructed using the neighbor-joining method with a maximum composite likelihood model including 1,000 bootstrap replicates using MEGA version 7 software [11]. Final concatenated alignments included four ingroup taxa with 1,866 characters containing gaps (1,268 for LSU and 598 for RPB2). *Coniothyrium palmarum* (CBS 400.71) was set as the outgroup taxon. The phylogenetic tree revealed that all isolates were clustered with the two strains (CBS 109410 and CBS 523.66) of *N. betae* (Fig. 3). Sequence data of LSU and RPB2 genes obtained from the five isolates were deposited in GenBank with accession numbers of OP077314–OP077318 and OP094074–OP094078, respectively.

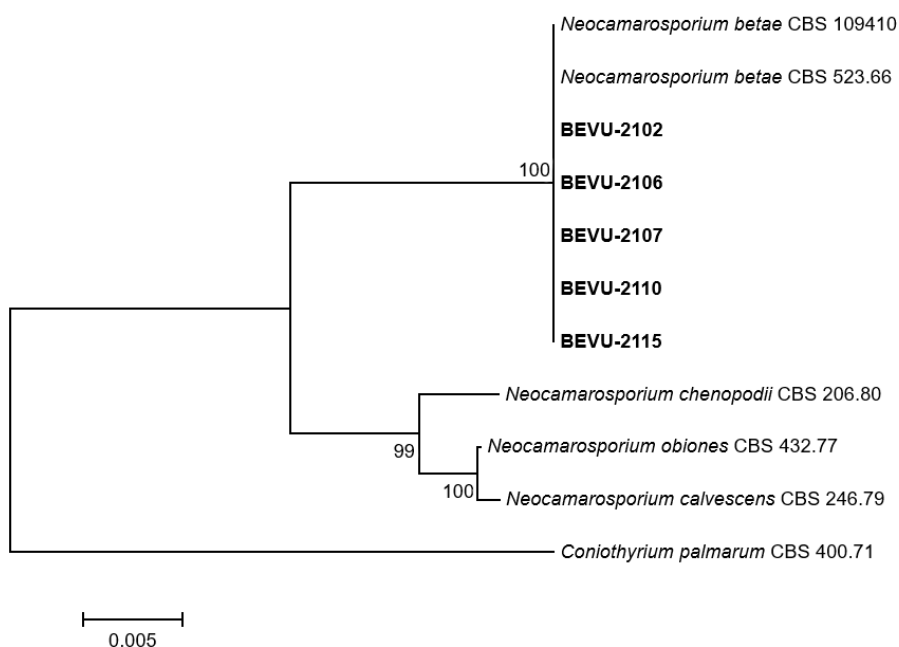


Fig. 3. Phylogenetic tree based on the concatenated sequences of partial large subunit nuclear ribosomal DNA and RNA polymerase II of the five *Neocamarosporium betae* isolates (BEVU-numbers) from beet and *Neocamarosporium* spp. Sequence data of *Neocamarosporium* spp. were obtained from the National Center for Biotechnology Information GenBank database. A phylogenetic tree was generated using the neighbor-joining method with a maximum composite likelihood model including 1,000 bootstrap replicates using MEGA version 7 software. Bootstrap support values are given at the nodes. Bar indicates the number of nucleotide substitutions per site. Tree was rooted to *Coniothyrium palmarum* CBS 400.71.

Three isolates of *N. betae* were tested to confirm their pathogenicity in beet plants via artificial inoculation. To produce conidia, isolates were cultured on PDA at 22°C in the dark for three weeks, after which they were incubated under alternating cycles of 13/11 hr NUV light/dark for two weeks. Subsequently, a conidial suspension ($1-2 \times 10^6$ conidia/mL) of each isolate was prepared from 5-week-old cultures, and 20 mL of the conidial suspension of each isolate was sprayed onto every 73-day-old beet plant grown in a plastic pot (height: 13.5 cm; upper diameter: 15 cm; lower diameter: 9 cm) in a vinyl greenhouse. A control plant was treated with 20 mL of sterile distilled water. All inoculated plants were placed in plastic boxes (71.0 × 53.5 × 40.5 cm) under 100% relative humidity at room temperature (24–26°C) for three days, removed from the boxes, and grown in a vinyl greenhouse. Then, pathogenicity of the isolates was determined based on the degree of leaf spot symptoms seven days after inoculation. An inoculation test was performed in triplicate. All tested isolates were found to cause leaf spot symptoms in the inoculated plants (Fig. 1C), whereas no symptoms were detected in the control plants (Fig. 1D). The symptoms in inoculated plants were similar to those observed in the plant leaves in the investigated fields. Re-isolation of the inoculated isolates from the lesions further confirmed this result.

N. betae (synonym: *P. betae*) causes black leg, damping-off, root rot, and leaf spot in beet (3). It also causes leaf spot of spinach in Spain (12). Beet leaf spot caused by *N. betae* has been reported in New Zealand, USA, and Italy [13, 14, 15]. Although beet leaf spot caused by *P. betae* is recorded in Korea [16], the identity and pathogenicity of the causal pathogen remain unknown. In this study, we identified *N. betae* as the pathogen causing beet leaf spot in Korea.

CONFLICT OF INTERESTS

No conflict of interest was reported by the authors.

ACKNOWLEDGEMENTS

This study was supported by a research grant (PJ014507012021) from the Rural Development Administration, Korea.

REFERENCES

1. Plants of the World Online. *Beta vulgaris* subsp. *vulgaris*. [Internet]. Kew: Royal Botanic Garden; 2022 [cited 2022 December 28]. Available from <https://powo.science.kew.org/>.
2. Lee GB, Mo YM, Cho WD, Kim WG. Leaf spot of rhubarb caused by *Didymella rhei* in Korea. *Kor J Mycol* 2021;49:555-60.
3. Boerema GH, de Gruyter J, Noordeloos ME, Hamers MEC. *Phoma* identification manual. Differentiation of Specific and Infra-specific Taxa in Culture. Oxfordshire: CABI;2004.
4. Chen Q, Jiang JR, Zhang GZ, Cai L, Crous PW. 2015. Resolving the *Phoma* enigma. *Stud Mycol* 2015;82:137-217.
5. Ariyawansa HA, Thambugala KM, Manamgoda DS, Jayawardena RS, Camporesi E, Boonmee S, Wanasinghe DN, Phookamsak R, Hongsanan S, Singtripop C, et al. Towards a natural classification and backbone tree for *Pleosporaceae*. *Fungal Divers* 2015;71:85-139.
6. Rehner SA, Samuels GJ. Taxonomy and phylogeny of *Gliocladium* analysed from nuclear large subunit ribosomal DNA sequences. *Mycol Res* 1994;98:625-34.
7. Vilgalys R, Hester M. Rapid genetic identification and mapping of enzymatically amplified ribosomal DNA from several *Cryptococcus* species. *J Bacteriol* 1990;172:4238-46.
8. Sung G-H, Sung J-M, Hywel-Jones NL. A multi-gene phylogeny of Clavicipitaceae (Ascomycota, Fungi): Identification of localized incongruence using a combinational bootstrap approach. *Mol Phylogenet Evol* 2007;44:1204-23.
9. Liu YJ, Whelen S, Hall BD. Phylogenetic relationships among ascomycetes: evidence from an RNA polymerase II subunit. *Mol Phylogenet Evol* 1999;16:1799-808.
10. Park M-J, Lee H, Ryoo R, Jang Y, Ka K-H. A rapid and universal direct PCR method for macrofungi. *Kor J Mycol* 2021;49:455-67.
11. Kumar S, Stecher G, Tamura K. MEGA7: molecular evolutionary genetics analysis version 7.0 for bigger datasets. *Mol Biol Evol* 2016;33:1870-4.
12. Bassimba DDM, Mira JL, Vicent A. First report of leaf spot of spinach caused by *Pleospora betae* in Spain. *Plant Dis* 2014;98:1583.

13. Chand N, Jones EE, Casonato S. Pathogenicity of *Phoma betae* isolates from red beet (*Beta vulgaris*) at seed farms in Canterbury, New Zealand. *N Z Plant Prot* 2019;72:21-6.
14. Garibaldi A, Gilardi G, Bertetti D, Gullino ML. First report of leaf spot and root rot caused by *Phoma betae* on *Beta vulgaris* subsp. *vulgaris* (garden beet group) in Italy. *Plant Dis* 2007;91:1515.
15. Pool VW, McKay MB. *Phoma betae* on the leaves of the sugar beet. *J Agric Res* 1915;4:169-77.
16. List of Plant Diseases in Korea. [Internet]. Seoul: Korean Society of Plant Pathology; 2022. [cited 2022 December 28]. Available from http://genebank.rda.go.kr/kplant_disease.do.