

Original Article

Bojungikgi-tang for Anorexia in Lung Cancer Patients with Treated with Chemotherapy: A Single-arm, Open-label, Single-center Trial

Im-Hak Cho^{§1}, Seong-Hoon Yoon^{§2}, So-Yeon Kim^{1,3}, Byoung-Kab Kang⁴, Chang-Seob Seo⁴,
Young-Eun Choi⁴, Hyeun Kyoo Shin^{4*}, Jun-Yong Choi^{1,3*}

¹Department of Korean Medicine, The Graduate School, Pusan National University

²Department of Internal Medicine, School of Medicine, Pusan National University Yangsan Hospital, Yangsan, Republic of Korea.

³Department of Korean Internal Medicine, School of Korean Medicine & Korean Medicine Hospital of Pusan National University

⁴Korea Institute of Oriental Medicine

Objectives: This study was to evaluate the effectiveness and safety of Bojungikgi-tang for lung cancer patients with anorexia.

Methods: This was a single-arm, open-label, and single-center trial, and suitable participants took Bojungikgi-tang (Buzhongyiqi-tang in Chinese, Hochuekki-to in Japanese) three times a day before or between meals for six weeks (42 days). After registration of clinical trials (visit 2), they visited the hospital every three weeks (visits 3 and 4) and measured or tested the effectiveness or safety evaluation variables to analyze the results. The primary outcome was the anorexia/cachexia subscale (A/CS) of functional assessment of anorexia/cachexia therapy (FAACT) score.

Results: Seventeen lung cancer patients were included in the intention-to-treat (ITT) analysis. Lung cancer patients had higher A/CS of FAACT scores after six weeks of Bojungikgi-tang administration compared to that at the baseline. This was not significant for lung cancer ($p=0.1668$). In the secondary outcomes, the visual analog scale (VAS) score of anorexia decreased significantly ($p=0.0009$), and the CD4/CD8 ratio ($p=0.0396$) and CD4 levels ($p=0.0345$) significantly increased after six weeks of treatment.

No serious adverse events were reported with Bojungikgi-tang in lung cancer patients.

Conclusions: Bojungikgi-tang can be an effective and safe treatment for anorexia in lung cancer patients undergoing chemotherapy.

Key Words : Anorexia, Bojungikgi-tang, Clinical Trial, Lung Neoplasm

• Received : 26 September 2023

• Accepted : 9 November 2023

• Correspondence to : Hyeun Kyoo Shin

Korean Medicine Science Research Division, Korea Institute of Oriental Medicine,
1672 Yuseong-daero, Yuseong-gu, Daejeon

Tel : +82-42-868-9464, E-mail address : hkshin@kiom.re.kr

• Correspondence to : Jun-Yong Choi

Department of Korean Internal Medicine, School of Korean Medicine & Korean Medicine Hospital of Pusan National University, 20 Geumo-ro, Yangsan-si, Gyeongsangnam-do

Tel : +82-55-360-5953, E-mail address : kmd@gmail.com

• This research was supported by grants from the Korea Institute of Oriental Medicine (KIOM) (grant numbers: KSN1812240, KSN2013310, and KSN2021310).

§ These authors contributed equally to this work.

Introduction

Lung cancer is the second most common cancer in the world, with more than 2.2 million new lung cancer patients in 2020¹⁾, and approximately 85% of lung cancer is non-small cell lung cancer (NSCLC)²⁾. The treatments of NSCLCs include surgical resection, chemotherapy, and radiation therapy, and the treatment method is determined by considering the stage and metastasis of cancer. Surgery is the best treatment for stage I or II NSCLC patients, and chemotherapy is recommended for stage IIIB or IV patients. Combining cisplatin with docetaxel, etoposide, gemcitabine, or vinorelbine is recommended as adjuvant therapy for locally advanced disease. Also, specific targeted therapy or immunotherapy may be performed in patients suitable for molecular and biomarker analysis³⁾. Small cell lung cancer (SCLC), which accounts for approximately 15–20% of lung cancer, reacts relatively well to chemotherapy, but it has a high recurrence rate and a low survival rate⁴⁾. In patients with SCLC, chemotherapy is the basic treatment, etoposide plus cisplatin is the first recommendation in the limited-stage, and chemotherapy plus immunotherapy are the first recommendation in the extensive stage. Combination therapy using cisplatin is also used for SCLC, and carboplatin has been commonly used due to its low nephrotoxicity and neurotoxicity while having the same effect as cisplatin⁵⁾.

Cisplatin, the primary platinum-based agent of chemotherapy, causes nausea and vomiting as a side effect. Furthermore, cisplatin releases large

amounts of serotonin binding to 5-HT receptors *in vivo*, resulting in anorexia by regulating the secretion of acyl ghrelin. Even if chemotherapy-induced nausea and vomiting are alleviated by antiemetic medication, the chemotherapy-induced anorexia persists, preventing patients from maintaining adequate nutrition and reducing their quality of life, making it difficult to complete chemotherapy^{6,7)}.

Currently, medication for cancer-related anorexia can be classified into appetite promoters, anti-inflammatory drugs, and metabolic drugs⁸⁾. An appetite promoter, megestrol acetate is mainly used for cancer-related anorexia. However, it can cause adverse effects such as thromboembolism, sexual dysfunction, and vaginal bleeding^{9,10)}. Cyproheptadine can cause sedation and drowsiness due to its antihistamine effect. However, insufficient clinical data supporting anti-inflammatory drugs has been reported, and some types may have serious adverse effects. Metabolic drugs have not been used due to severe concerns over the possibility of tumor growth and a decrease in body defense mechanisms⁸⁾.

Lung cancer patients treated with chemotherapy may be interested in safer alternative medicine to treat chemotherapy-induced anorexia, and herbal medicine treatment can be a safe alternative treatment. Bojungikgi-tang (Buzhongyiqi-tang in Chinese, Hochuekki-to in Japanese) is a widely prescribed in East Asian countries such as Korea, Japan, China, and Taiwan, and is mainly used to treat weakness and anorexia, and improve digestive function and immunity¹¹⁾. According to Korea's Ministry of Food and Drug Safety, Bojungikgi-tang is used for the following

symptoms: general weakness, fatigue, weakness after disease, anorexia, and sweating while sleeping at night. Studies reported that Bojungikgi-tang has fewer adverse effects while improving the appetite and the quality of life of lung cancer patients treated with cisplatin chemotherapy¹²⁾. As for the pharmacological mechanism of Bojungikgi-tang for the anorexia, there is a study on the effects of the constituent herbs, *Aurantii nobilis Pericarpium* and *Atractylodis Lanceae Rhizoma*. Hesperidin, an active substance of *Aurantii nobilis Pericarpium* promotes the secretion of ghrelin by antagonizing 5-HT_{2c}R, and atractyrodin, an active substance of *Atractylodis Lanceae Rhizoma*, acts on the end of the vagus nerve to strengthen the action of ghrelin¹³⁾.

Bojungikgi-tang is likely to be considered a safe treatment for cancer patients to treat chemotherapy-induced anorexia. Therefore, this study aimed to explore the effectiveness and safety of Bojungikgi-tang for anorexia in lung cancer patients treated with chemotherapy.

Methods

1. Study Design and Setting

This single-arm, open-label, and single-center trial was conducted at the Pusan National University Korean Medicine Hospital in Pusan, Korea, from January 27, 2020 to December 31, 2021. Bojungikgi-tang was administered three times a day for 42 days (6 weeks) before or during the meals to investigate its effect on chemotherapy-induced anorexia in lung cancer patients. The patients visited the hospital every three weeks after registration and underwent tests

for effectiveness and safety evaluation.

2. Participants

An advertisement was posted at the respiratory clinic of this hospital to recruit patients. Physicians interviewed the participants to confirm their clinical condition and determine whether they met the study criteria. The data required for the study were collected by the clinical research coordinator. The participants provided informed consent for voluntary participation in the trial and observing the precautions.

1.2 Inclusion Criteria

- 1) Adults aged ≥ 19 years
- 2) Participants with histologically or cytologically confirmed lung cancer (NSCLC [Ib~IV] or SCLC [extensive stage])
- 3) Participants who had received chemotherapy containing a platinum-based anticancer drug (cisplatin or carboplatin) at least one time at the screening visit and scheduled for chemotherapy at least two times after the screening visit
- 4) Participants able to ingest medicine orally
- 5) Eastern cooperative oncology group (ECOG) performance status score ≤ 2
- 6) Participants who were suffering from anorexia after chemotherapy, and score on the VAS for anorexia $\geq 40/100$ mm (100 mm is the worst anorexia score)
- 7) Participants who were not taking megestrol acetate for stimulating appetite
- 8) After hearing and fully understanding the detailed description of the clinical trial, individuals who provided written informed

consent for voluntary participation and observing the precautions

- 9) Participants who could fully communicate with their doctor about their symptoms or quality of life and who could fill out questionnaires
- 10) Participants who could follow-up during the clinical trial
- 11) Participants with a life expectancy of three months or more

1.2 Exclusion Criteria

- 1) Individuals who had hemoptysis (> 2.5 mL/day) within 2 weeks at the screening visit
- 2) Individuals who had symptomatic and uncontrolled brain or central nervous system metastasis, have other malignancies or with a history of other malignancies within five years from the screening visit (Except cured basal or squamous cell skin cancer, cervical epithelial cancer, thyroid cancer, prostate cancer or breast cancer)
- 3) Total bilirubin level higher than 2.0 mg/dL
- 4) Alanine aminotransferase (ALT) and aspartate aminotransferase (AST) levels higher than 2.5 times the upper limit for normal
- 5) Creatinine level higher than 1.5 times the upper limit for normal
- 6) Individuals who had uncontrolled hypertension (Diastolic blood pressure > 100 mmHg or systolic blood pressure > 160 mmHg), diabetes, active infection, or heart diseases such as symptomatic congestive heart failure or unstable angina
- 7) Individuals who took other herbal medicine within two weeks of the screening visit
- 8) Individuals with uncontrolled pleural effusion, ascites, pericardial effusion
- 9) Individuals who had a major psychotic disorder diagnosed by Diagnostic and Statistical Manual of Mental Disorders, Fifth Edition (DSM-V) that is taking or should be taking psychiatry medications (except insomnia)
- 10) Individuals who had alcoholism or drug dependence
- 11) Individuals with a history of serious drug allergies or who have hypersensitivity to the investigational product (the main ingredient and its components)
- 12) Individuals who had genetic problems such as galactose intolerance, lapp lactase deficiency, or glucose-galactose malabsorption
- 13) Individuals who were pregnant, breastfeeding, planning to become pregnant or women of childbearing potential who disagreed with the appropriate method of contraception
- 14) Individuals who had participated in other clinical trials within six months (180 days before screening visit) or planned to participate in other clinical trials during the trial
- 15) Individuals who had a medical condition that would have likely affected the results or who were deemed to be inappropriate to participate by an investigator
- 16) Individuals who required or received parenteral or tube nutrition

3. Sample Size

For the sample size calculation, a previous study in which Sipkeondaebotang was administered for four weeks to improve the anorexia of cancer patients was referenced¹⁴. The mean and standard deviation for the difference before and after of the A/CS scale of FAACT were 4.63 and 4.50, respectively. The value calculated by the G-power program was 13 (A two-sided paired t-test, a error : 0.050, b error : 0.10). Since this study involved the administration of drugs for six weeks, the target number of participants was calculated considering a dropout rate of 35%. Therefore, the sample size was calculated as 20.

4. Preparation of Bojungikgi-tang

The Bojungikgi-tang used in this study was provided by pharmaceutical company Hanpoong Pharm & Foods Co (Wanju-gun, Korea) under Good Manufacturing Practices. The participants were instructed to take one pack (75 mL) orally before or during their meals three times a day.

The Bojungikgi-tang reference standards used in chemical profiling were all over 98.0% and were purchased from standard manufacturers — Biopurify Phytochemicals (Chengdu, China), ChemFaces Biochemical Co. (Wuhan, China), and Fujifilm Wako Pure Chemical Co. (Osaka, Japan). Water, acetonitrile, and acetic acid were high-performance liquid chromatography (HPLC) grade and purchased from J.T. Baker (Phillipsburg, NJ, USA) and Merck (Darmstadt, Germany), respectively. Chemical profile analysis of Bojungikgi-tang drug using HPLC was conducted according to previously reported research method¹⁵. Briefly, chemical profiling was performed

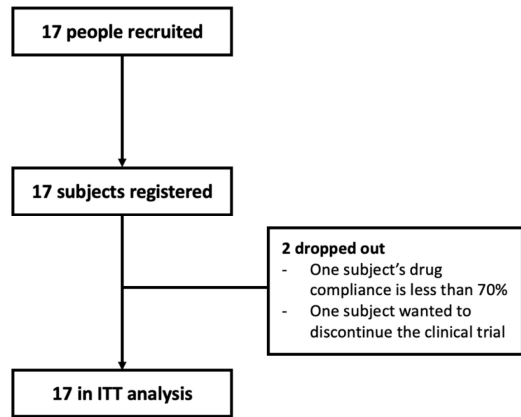


Fig. 1. Flow diagram of the participants

using a Gemini C₁₈ analytical column (250 × 4.6 mm, 5 μm, Phenomenx, Torrance, CA, USA) and a water–acetonitrile (both contain 1.0% acetic acid) mobile phase on a Shimadzu Prominence LC–20A series system (Kyoko, Japan).

5. Outcomes

The primary outcome was the functional assessment of anorexia/cachexia therapy (FAACT) anorexia/cachexia subscale (A/CS), on visits 4 (6 weeks after baseline). The secondary outcomes were FACT-G, FACT-L, visual analogue scale (VAS) of anorexia, weight, body mass index (BMI), skeletal muscle mass and CD4, CD8 as well as CD4/CD8 ratio in blood.

6. Safety

Participants who took Bojungikgi-tang more than once after registration in this clinical trial were subject to safety evaluation. Safety evaluation includes adverse reactions, clinical laboratory tests, vital signs, and physical examinations. Researchers were instructed to

explain all adverse reactions that may occur after drug administration to participants or guardians and report all symptoms after treatment. An adverse reaction is analyzed by symptom, and the frequency is recorded in the adverse event report.

7. Statistical Analysis

The main analysis is a full analysis set (FAS) analysis according to the intention-to-treat (ITT) principle, and the secondary analysis is per protocol (PP) analysis for the effectiveness evaluation. The last observation carried forward (LOCF) method was used when the missing value was found in the ITT analysis. This is to replace the missing value in visit 4 (6 weeks after baseline) with the matter in visit 2 (baseline) or 3 (3 weeks after baseline)). The statistical significance criterion for primary and secondary outcome is a significance level of 5%. For continuous data, a paired t-test is performed for normal distribution and a Wilcoxon signed rank test for not normal distribution. All analyses were performed using the SPSS 23 for Windows (SPSS inc., Chicago, IL, USA) program.

The adverse events were analyzed for each symptom and expressed as a frequency for the safety analysis.

Results

1. Baseline and Disease Characteristics of Patients

A total of 17 participants participated in this study, but two did not complete (Figure 1). The characteristics of the participants' baseline and disease are shown in Table 1.

2. Primary Outcome

The primary outcome was the A/CS of FAACT, and the mean scores on visits 2 (baseline) and 4 (6 weeks after baseline) were 30.4 ± 5.5 and 32.8 ± 7.6 , respectively. The mean difference was 2.4 ± 6.7 with no significant difference between the values at the baseline and at visit 4 (Table 2).

3. Secondary Outcomes

In FACT-G and FACT-L, no significant differences were observed between the values at the baseline and at visit 3 (3 weeks after baseline) or 4 (6 weeks after baseline). In the VAS of anorexia, no significant difference was identified between the values at the baseline and visit 3; however, the VAS score for anorexia decreased significantly at visit 4 compared with that at the baseline ($p=0.0009$). Comparing the values at visits 3 and 4 with those at the baseline, there were no significant differences in weight, BMI, and skeletal muscle mass (Table 3).

At visit 4, CD4/CD8 and CD4 levels increased significantly compared with their baseline levels ($p=0.0396$ and 0.0345 , respectively), while there was no significant difference in the CD8 levels ($p=0.0562$). There were no significant differences between the baseline and visit 4 in terms of metabolic test results and hsCRP levels (Table 4).

4. Safety

There were no serious adverse events, and all those reported during the study were alleviated. During the study period, the symptoms of adverse events in the participants included vomiting, nausea, dizziness, sweating, general weakness, heartburn, high blood pressure, headache,

Table 1. Baseline and Disease Characteristics of the Participants

Characteristics	Participants (n = 17)
Age (years)	65.2±7.6
Sex (n)	
Male	13 (76.47%)
Female	4 (23.53%)
Height (cm)	163.0±7.0
Weight (kg)	62.8±9.1
BMI (kg/m ²)	23.6±3.2
Smoking (n)	
Yes	6 (35.29%)
No	10 (58.82%)
Former smoker	1 (5.88%)
Drinking (n)	
Yes	0 (0.00%)
No	17 (100.00%)
Histology (n)	
NSCLC	
Adenocarcinoma	8 (47.06%)
Squamous cell carcinoma	8 (47.06%)
Large cell carcinoma	0 (0.00%)
SCLC	1 (5.88%)
Clinical stage (n)	
I	2 (11.76%)
II	4 (23.53%)
III	3 (17.65%)
IV	8 (47.06%)
Surgery (n)	
No	6 (35.29%)
Post-operation	11 (64.71%)
ECOG (n)	
0	0 (0.00%)
1	17 (100.00%)
2	0 (0.00%)
Antitumor agents (n)	
Cisplatin	8 (47.10%)
Carboplatin	6 (35.30%)
Carboplatin+Taxol	1 (5.90%)
Carboplatin+Gemcitabine	1 (5.90%)
Carboplatin+ALIMTA (pemetrexed)	1 (5.90%)

constipation, and bloating (Table 5).

5. HPLC Chemical Profiling of Bojungikgi-tang Drug

For simultaneous quantitative analysis of the four components (liquiritin, nodakenin, hesperidin,

and glycyrrhizin) from the Bojungikgi-tang drug using HPLC coupled with a photo-diode array detector, a previously reported regression equation was used¹⁵. Glycyrrhizin at 254 nm, liquiritin and hesperidin at 280 nm, and nodakenin at 335 nm were quantified, respectively (Figure 2). As a result, the four components (liquiritin, nodakenin, hesperidin, and glycyrrhizin) was detected at 10.79±0.15, 13.30±0.17, 58.82±0.89, and 28.91±0.68 g/mL, respectively.

Discussion

Of the total 17 patients registered in this study, 16 were NSCLC patients, excluding one SCLC patient. The stage was based on the final diagnoses at the clinical or postoperative stage; stage IV patients were the most common, with eight (47.06%). Eleven patients (64.71%) underwent chemotherapy after surgery, and all patients underwent chemotherapy with platinum-based agents. Approximately 70% of lung cancer patients are diagnosed with advanced stage, and 40% of patients are in stage IV, so chemotherapy is inevitable for advanced lung cancer patients¹⁶.

Platinum anticancer drugs have serious side effects. Cisplatin has nephrotoxicity, carboplatin has myelosuppression, and oxaliplatin has neurotoxicity. Also, there is a possibility of side effects such as hypersensitivity, cytopenia, hepatotoxicity, nausea, vomiting, diarrhea, stomatitis, and anorexia. Approximately 67% of lung cancer patients with chemotherapy suffer from anorexia, especially those who received cisplatin chemotherapy^{17,18}. The survival rate of lung cancer patients has been increasing due to

Table 2. Primary outcome: A/CS of FAACT

	Visit 2 (Baseline)	Visit 4 (6 weeks)	D(V4-V2)	P-value
A/CS of FAACT (mean±SD)	30.4±5.5	32.8±7.6	2.4±6.7	0.1668

Table 3. Secondary outcomes: FACT-G, FACT-L, VAS of anorexia, weight, BMI, and skeletal muscle mass

	Visit	Mean±SD	P-value
FACT-G	V2 (Baseline)	65.6±13.1	
	V3 (3weeks)	68.0±13.2	0.3817
	V4 (6weeks)	66.9±14.1	0.5269
FACT-L	V2 (Baseline)	15.7±3.4	
	V3 (3weeks)	16.9±2.5	0.1933
	V4 (6weeks)	18.4±8.9	0.3966 [†]
VAS of anorexia (mm)	V2 (Baseline)	65.4±14.1	
	V3 (3weeks)	51.2±29.9	0.0791
	V4 (6weeks)	43.5±24.5	0.0009*
Weight (kg)	V2 (Baseline)	63.5±9.0	
	V3 (3weeks)	63.3±9.4	0.6400
	V4 (6weeks)	63.6±9.3	0.8150
BMI (kg/m ²)	V2 (Baseline)	23.8±3.2	
	V3 (3weeks)	23.8±3.4	0.7106
	V4 (6weeks)	23.9±3.3	0.7332
Skeletal muscle mass (kg)	V2 (Baseline)	25.0±3.4	
	V3 (3weeks)	24.5±3.3	0.2512 [†]
	V4 (6weeks)	24.7±3.0	0.3749

* p < 0.001

[†] P-value was analyzed by Wilcoxon signed rank test

Table 4. Secondary outcomes: CD4/CD8 ratio, CD4, CD8, metabolic tests, and hsCRP

	Visit 2 (baseline)	Visit 4 (6 weeks)	D(V4-V2)	P-value
CD4/CD8 ratio	2.0±1.2	2.3±1.2	0.3±0.6	0.0396*
CD4 (%)	38.5±10.1	42.4±10.4	3.9±7.5	0.0345*
CD8 (%)	24.4±12.5	21.7±8.2	-2.7±8.5	0.0562
Na (mmol/L)	138.3±2.8	138.2±3.1	-0.1±1.4	0.7268
K (mmol/L)	4.2±0.4	4.2±0.4	0.1±0.4	0.4193
Cl (mmol/L)	103.9±3.1	103.2±4	-0.7±2.6	0.2866
BUN (mg/dL)	13.8±4.1	13.8±4.1	0.0±3.9	0.9660
Creatinine (mg/dL)	0.8±0.1	0.8±0.2	0.0±0.1	0.9390
hsCRP (mg/L)	1.4±1.9	1.9±4.2	0.5±3.1	0.7615

* p < 0.05

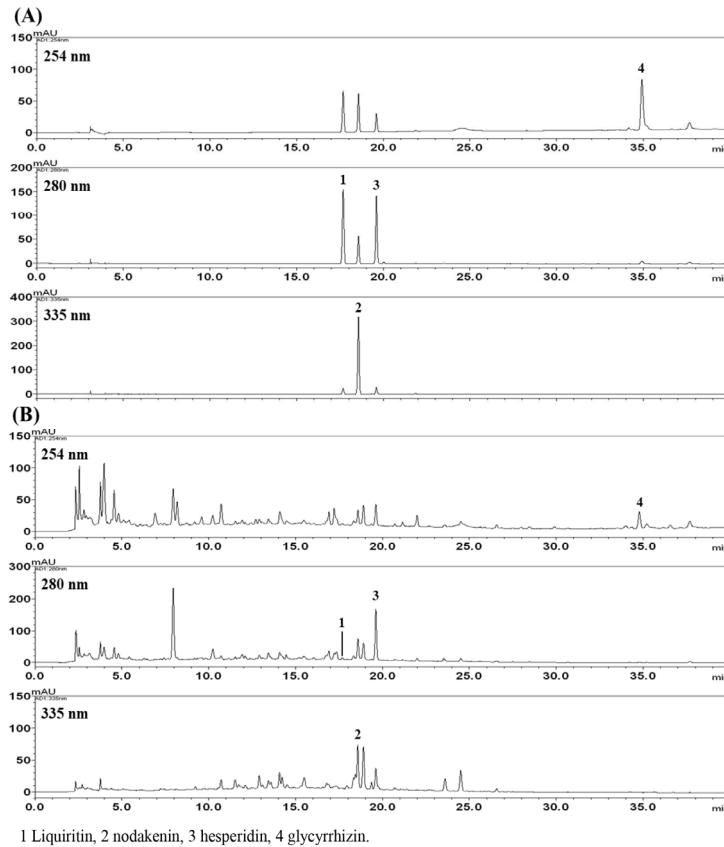


Fig. 2. HPLC chromatogram of standard solution mixed the four components (A) and Bojungikgi-tang clinical sample (B).

chemotherapy, but the quality of life is not. Therefore, the need for palliative treatment for cancer symptoms and side effects of chemotherapy is increasing^{19,20}. Consequently, it is necessary to treat cancer patients suffering from chemotherapy-induced anorexia, and we used Bojungikgi-tang as a research drug.

Bojungikgi-tang was made around the 13th century and has been used frequently in East Asian countries until now. It treats general weakness, fatigue, anorexia, indigestion, and weakened immunity²¹. In addition, there are reports that Bojungikgi-tang improves the toxic

side effects of chemotherapy. This drug is used as an adjuvant to improve the quality of life of cancer patients receiving chemotherapy²². In a study in Taiwan, lung cancer patients who received herbal medicine had a lower mortality hazard ratio than those who did not, and the most used herbal medicine was reported as Bojungikgi-tang²³. Bojungikgi-tang is also related to the resistance of patients receiving cisplatin treatment. In the in vitro experiment, it was reported that Bojungikgi-tang inhibits the growth of cisplatin-resistant lung cancer cells²⁴. Therefore, in this study, various outcomes were

set up to find out the effectiveness and safety of Bojungikgi-tang on chemotherapy-induced anorexia in lung cancer patients.

FAACT is a reliable questionnaire that evaluates the quality of life of cancer patients with anorexia/cachexia²⁵. There is no significant difference between before and after of A/CS of FAACT, the primary outcome of this study. However, referring to a study analyzing that the cut-off value of A/CS of FAACT score is less than 32 in patients with Non-small cell lung cancer²⁶, the mean score of baseline in this study is 30.4 and the mean score after six weeks of administration is 32.8, so anorexia is improved above the cut-off.

FACT-G is a questionnaire that has been used in several studies to evaluate the quality of life of lung cancer patients. It is divided into four parts (physical, social/family, emotional, and functional) and consists of 27 questions. In addition, FACT-L consists of nine additional questions that evaluate lung cancer-specific symptoms^{27,28}. In one study²⁹ comparing FACT-L between a group with traditional Chinese medicine (TCM) treatment and chemotherapy and a group with chemotherapy only, the group with TCM treatment had significantly higher scores than those of the chemotherapy group. Comparing the post anticancer score of the TCM group with that at the baseline, no significant difference was observed. However, the scores were gradually decreased in the subscales of physical well-being and lung cancer symptom, but the decrease was less than in the chemotherapy alone group. In our study, FACT-G and FACT-L also had no significant changes before and after the medication. The

results of the two questionnaires gradually improved after six weeks compared to those at the baseline, but could not be compared with a control group receiving only chemotherapy. Nevertheless, there was a significant decrease between baseline and six weeks in VAS of anorexia. This means that the anorexia that patients feel subjectively has significantly improved after taking Bojungikgi-tang.

T lymphocytes play a role in the innate anticancer immune response. In several types of cancers, the immune cells associated with clinical efficacy and survival are tumor-infiltrating CD4+ and CD8+ T cells. CD4+ T cells help the killing activity of cytotoxic CD8+ T lymphocytes and other hematopoietic cells such as NK cells, DCs, and macrophages in the immune system. CD4+ T cells are activated after receiving specific antigen peptides through the major histocompatibility complex (MHC) class II molecule of antigen presenting cells (APCs). Activated CD4+ T cells cause rapid proliferation and secretion of cytokines that regulate immune responses. The T cell receptor (TCR) of CD8+ T lymphocytes recognizes the specific antigen peptide presented by human leukocyte antigen class I (HLA-I)/beta-2-microglobulin ($\beta 2m$) complexes on the surface of the target cell. Activated CD8+ T lymphocytes play an essential role in anticancer immunity by killing tumor cells directly^{30,31}. In addition, Certain types of blood CD4+ T cells are also known as good prognostic factors in lung cancer patients³².

When the immune function of cancer patients is impaired, CD4 cells and CD4/CD8 decrease and CD8 cells increase³³. A low CD4/CD8 ratio

means that the cell-mediated immune function of cancer patients decreased³¹). Studies show an increased CD4 and CD4/CD8 ratio by administering herbal medicines to lung cancer patients. In a study by Yang et al., patients with stage III and IV lung cancer using both herbal medicine and chemotherapy showed significantly higher CD4 and CD4/CD8 than those who received chemotherapy only³⁴). In another study by Li et al., Fu-Zheng-Qu-Xie (扶正祛邪) was administered to patients with early-stage lung cancer and after administering FZQX, the recurrence rate of 3-year post-operation was significantly reduced, and the quality of life was improved. Moreover, CD4/CD8 was increased in peripheral blood tests³⁵). In addition, one study found that Bojungikgi-tang can reduce the upregulation of CD8 T cells induced by chemotherapy³⁶).

In our study, CD4 and CD4/CD8 ratio in the blood were significantly increased in patients who received both chemotherapy and Bojungikgi-tang. Whether this positively affects the patient's condition will need to be revealed through a further study of various subtype analyses of CD4 and CD8 cells.

In one randomized controlled trial (RCT) in lung cancer patients, the group that combined herbal medicine and adjuvant chemotherapy had less decrease in hemoglobin and less increase in total bilirubin compared to that in the control group. In that study, adjuvant therapy, including platinum-based anticancer agents, was used as control, and it is mentioned that the abnormal level was normalized when the anticancer cycle was completed³⁷). In our study, lung cancer patients receiving chemotherapy including

platinum-based anticancer agents, showed a decrease in hemoglobin and an increase in total bilirubin after administration compared to that before the administration of Bojungikgi-tang. This might have been due to hematological toxicity and hepatotoxicity, among various side effects that may appear in platinum-based anticancer agents¹⁸). In other safety tests, there was no significant change before and after the administration of Bojungikgi-tang. All seven patients who reported adverse events showed mild symptoms, and all of them were alleviated. A study taking herbal medicine as a supplementary treatment for lung cancer patients under chemotherapy reported constipation and mild blood pressure increase³⁸).

Our study had the following limitations. First, it was a single-group study, and included no control group, and the number of participants was not large, making it difficult to generalize the results of this study. A well-designed and large-scale comparative study is needed in the future. Second, since it was targeted at patients undergoing chemotherapy, the effect of chemotherapy on patients cannot be excluded, and it is unclear. However, this study is meaningful as no serious side effects were identified while showing effective results on appetite and improved immunity by administering Bojungikgi-tang to lung cancer patients with chemotherapy-induced anorexia.

Collectively, Bojungikgi-tang could be an effective and safe treatment without serious adverse events for anorexia in lung cancer patients undergoing chemotherapy. To confirm this, future well-designed trial for anorexia

containing immune function monitoring should be needed.

Author contributions

IH Choi and SH Yoon drafted the manuscript. SY Kim and YE Choi interpreted data. BK Kang conducted statistical analysis of clinical data. CS Seo analyzed the HPLC data of Bojungikgi-tang. JY Choi and HK Shin designed the study and supervised the research.

Conflicts of interest

The authors declare that they have no conflicts of interest.

Acknowledgment & Funding

This research was supported by grants from the Korea Institute of Oriental Medicine (KIOM) (grant numbers: KSN1812240, KSN2013310, and KSN2021310).

Ethical statement

This research was reviewed and approved by the institutional review board (IRB) of the Pusan National University Korean Medical Hospital (registration number PNUKHIRB-2019011). Informed consent was obtained from all participants.

Data availability

Because of ethical concerns, supporting data cannot be made openly available.

References

1. World Cancer Research Fund International. Lung cancer statistics. Available from: URL: <https://www.wcrf.org/cancer-trends/lung-cancer-statistics/1>.
2. Griesinger F, Korol EE, Kayaniyl S, Varol N, Ebner T, Goring SM. Efficacy and safety of first-line carboplatin-versus cisplatin-based chemotherapy for non-small cell lung cancer: A meta-analysis. *Lung Cancer* 2019;135: 196-204. 10.1016/j.lungcan.2019.07.010
3. Ettinger DS, Wood DE, Aisner DL, Akerley W, Bauman JR, Bharat A, et al. Non-Small Cell Lung Cancer, Version 3.2022, NCCN Clinical Practice Guidelines in Oncology. *J Natl Compr Canc Netw* 2022;20(5):497-530. 10.6004/jnccn.2022.0025
4. Ryu HJ, Kim YN, Gyeong SY, Park SH, An CH, Bang SM, et al. Original Articles : Carboplatin, ifosfamide, and etoposide chemotherapy for extensive-disease small cell lung cancer. *Korean J Med* 2006;70(6): 688-694. <http://www.ekjm.org/journal/view.php?number=15822>
5. Ganti AKP, Loo BW, Bassetti M, Blakely C, Chiang A, D'Amico TA, et al. Small Cell Lung Cancer, Version 2.2022, NCCN Clinical Practice Guidelines in Oncology. *J Natl Compr Canc Netw* 2021;19(12):1441-1464. 10.6004/jnccn.2021.0058
6. Hattori T, Yakabi K, Takeda H. Cisplatin-induced anorexia and ghrelin. *Vitam Horm* 2013;92:301-317. 10.1016/b978-0-12-410473-0.00012-x

7. Yoshiya T, Mimae T, Ito M, Sasada S, Tsutani Y, Satoh K, et al. Prospective, randomized, cross-over pilot study of the effects of Rikkunshito, a Japanese traditional herbal medicine, on anorexia and plasma -acylated ghrelin levels in lung cancer patients undergoing cisplatin-based chemotherapy. *Invest New Drugs* 2020;38(2):485-492. 10.1007/s10637-019-00836-x
8. Seonkyeong Y, and Hyunah K. Pharmacologic Therapy for Cancer Anorexia-Cachexia Syndrome. *J Clin Nutr* 2015;7(2):36-41. 10.15747/jcn.2015.7.2.36
9. Ruiz Garcia V, López-Briz E, Carbonell Sanchis R, Gonzalvez Perales JL, Bort-Marti S. Megestrol acetate for treatment of anorexia-cachexia syndrome. *Cochrane Database Syst Rev* 2013;2013(3):Cd004310. 10.1002/14651858.CD004310.pub3
10. Zhang X, Qiu H, Li C, Cai P, Qi F. The positive role of traditional Chinese medicine as an adjunctive therapy for cancer. *Biosci Trends* 2021;15(5):283-298. 10.5582/bst.2021.01318
11. Akita S, Namiki T, Kawasaki Y, Rikihisa N, Ogata H, Tokumoto H, et al. The beneficial effect of traditional Japanese herbal (Kampo) medicine, Hochu-ekki-to (Bu-Zhong-Yi-Qi-Tang), for patients with chronic wounds refractory to conventional therapies: A prospective, randomized trial. *Wound Repair Regen* 2019;27(6):672-679. 10.1111/wrr.12753
12. Na D. Clinical Effect and Pharmacological Analysis of Buzhongyiqi Decoction Combined with Chemotherapy on Nonsmall Cell Lung Cancer. *Clinical journal of traditional chinese medicine* 2019;31(1): 145-148. 10.16448/j.cjtc.2019.0041
13. Ming-Hua C, Bao-Hua Z, Lei Y. Mechanisms of Anorexia Cancer Cachexia Syndrome and Potential Benefits of Traditional Medicine and Natural Herbs. *Curr Pharm Biotechnol* 2016;17(13):1147-1152. 10.2174/1389201017666161018123311
14. Cheon C, Yoo J-E, Yoo H-S, Cho C-K, Kang S, Kim M, et al. Efficacy and Safety of Sipjeondaebotang for Anorexia in Patients with Cancer: A Pilot, Randomized, Double-Blind, Placebo-Controlled Trial. *Evidence-Based Complementary and Alternative Medicine* 2017;2017:8780325. 10.1155/2017/8780325
15. Seo C, Kim J, Shin H. Simultaneous determination of liquiritin, nodakenin, hesperidin and glycyrrhizin in Bojungjigi-tang using HPLC-PDA. *Yakhak Hoeji* 2013;57(3):187-193. <http://www.yakhak.org/journal/view.html?spage=187&volume=57&number=3>
16. Lemjabbar-Alaoui H, Hassan OU, Yang YW, Buchanan P. Lung cancer: Biology and treatment options. *Biochim Biophys Acta* 2015;1856(2):189-210. 10.1016/j.bbcan.2015.08.002
17. Sun LL, Lai HZ, Chen ZZ, Zhu XS, Lin LZ. Modified Liujunzi Decoction () Alleviates Chemotherapy-Induced Anorexia in Advanced Non-Small Cell Lung Cancer: A Propensity Score Matched Case-Control Study. *Chin J Integr Med* 2020;26(4): 256-262. 10.1007/s11655-020-3185-5
18. Oun R, Moussa YE, Wheate NJ. The side effects of platinum-based chemotherapy drugs: a review for chemists. *Dalton Trans*

- 2018;47(19):6645-6653. 10.1039/c8dt00838h
19. Davis MP. The emerging role of palliative medicine in the treatment of lung cancer patients. *Cleve Clin J Med* 2012;79 Electronic Suppl 1:eS51-55. 10.3949/ccjm.79.s2.11
 20. Temel JS, Pirl WF, Lynch TJ. Comprehensive symptom management in patients with advanced-stage non-small-cell lung cancer. *Clin Lung Cancer* 2006;7(4):241-249. 10.3816/CLC.2006.n.001
 21. Kuroiwa A, Liou S, Yan H, Eshita A, Naitoh S, Nagayama A. Effect of a traditional Japanese herbal medicine, hochu-ekki-to (Bu-Zhong-Yi-Qi Tang), on immunity in elderly persons. *Int Immunopharmacol* 2004; 4(2):317-324. 10.1016/j.intimp.2003.12.004
 22. QIAN Jia-nan, SUN Bo-yun, Hong-yi H. Clinical and Basic Research Progress of Buzhong Yiqi Decoction in Treatment of Malignant Tumor Diseases. *Journal of Hebei Traditional Chinese Medicine and Pharmacology* 2021;36(5):59-64. 10.16370/j.cnki.13-1214/r.2021.05.017
 23. Li TM, Yu YH, Tsai FJ, Cheng CF, Wu YC, Ho TJ, et al. Characteristics of Chinese herbal medicine usage and its effect on survival of lung cancer patients in Taiwan. *J Ethnopharmacol* 2018;213:92-100. 10.1016/j.jep.2017.10.031
 24. Yu N, Xiong Y, Wang C. Bu-Zhong-Yi-Qi Decoction, the Water Extract of Chinese Traditional Herbal Medicine, Enhances Cisplatin Cytotoxicity in A549/DDP Cells through Induction of Apoptosis and Autophagy. *Biomed Res Int* 2017;2017: 3692797. 10.1155/2017/3692797
 25. Ribaldo JM, Cella D, Hahn EA, Lloyd SR, Tchekmedyian NS, Von Roenn J, et al. Re-validation and shortening of the Functional Assessment of Anorexia/Cachexia Therapy (FAACT) questionnaire. *Qual Life Res* 2000;9(10):1137-1146. 10.1023/a:1016670403148
 26. Turcott JG, Oñate-Ocaña LF, Soca-Chafre G, Ramírez-Tirado L-A, Flores-Estrada D, Zatarain-Barrón ZL, et al. FAACT-Anorexia Cachexia Scale: Cutoff Value for Anorexia Diagnosis in Advanced Non-Small Cell Lung Cancer Patients. *Nutrition & Cancer* 2019; 71(3):409-417. 10.1080/01635581.2018.1506488
 27. Jeon H, Eo W, Shim B, Kim S, Lee S. Prognostic Value of Functional Assessment of Cancer Therapy-General (FACT-G) in Advanced Non-Small-Cell Lung Cancer Treated with Korean Medicine. *Evid Based Complement Alternat Med* 2020;2020:2845401. 10.1155/2020/2845401
 28. Yoo H, Suh C, Kim S, Eremenco S, Kim H, Kim S. Korean translation and validation of the functional assessment of cancer therapy-lung (FACT-L) version 4. *Qual Life Res* 2006;15(1): 161-166.10.1007/s11136-005- 8752-x
 29. Xiao Z, Chen Z, Han R, Lu L, Li Z, Lin J, et al. Comprehensive TCM treatments combined with chemotherapy for advanced non-small cell lung cancer: A randomized, controlled trial. *Medicine (Baltimore)* 2021; 100(18):e25690. 10.1097/md.00000000000025690
 30. Rébé C, Demontoux L, Pilot T, Ghiringhelli F. Platinum Derivatives Effects on Anticancer Immune Response. *Biomolecules* 2019;10(1). 10.3390/biom10010013

31. Yan Y, Wang X, Liu C, Jia J. Association of lymphocyte subsets with efficacy and prognosis of immune checkpoint inhibitor therapy in advanced non-small cell lung carcinoma: a retrospective study. *BMC Pulm Med* 2022;22(1):166. 10.1186/s12890-022-01951-x
32. Tay RE, Richardson EK, Toh HC. Revisiting the role of CD4+ T cells in cancer immunotherapy—new insights into old paradigms. *Cancer Gene Therapy* 2021;28(1): 5-17. 10.1038/s41417-020-0183-x
33. Zhao Z, Liao H, Ju Y. Effect of compound Kushen injection on T-cell subgroups and natural killer cells in patients with locally advanced non-small-cell lung cancer treated with concomitant radiochemotherapy. *J Tradit Chin Med* 2016;36(1):14-18. 10.1016/s0254-6272(16)30002-4
34. Zu-yi Y, Xue-mei W, Ya-long O, Ping Y, Jie L, Xiu-yun S. Effect of TCM combined with chemotherapy on immune function and quality of life of patients with non-small cell lung cancer in stage III-IV. *Chinese Journal of Integrative Medicine* 2004;10(3):181-186. 10.1007/BF02836403
35. Zhang S, Chen W, Wang Y, Wu J, Xu L, Yu Y, et al. Chinese Herbal Prescription Fu-Zheng-Qu-Xie Prevents Recurrence and Metastasis of Postoperative Early-Stage Lung Adenocarcinoma: A Prospective Cohort Study Followed with Potential Mechanism Exploration. *Oxidative Medicine and Cellular Longevity* 2021;2021:6673828. 10.1155/2021/ 6673828
36. Xu R, Wu J, Zhang X, Zou X, Li C, Wang H, et al. Modified Bu-zhong-yi-qi decoction synergies with 5 fluorouracil to inhibit gastric cancer progress via PD-1/PD- L1-dependent T cell immunization. *Pharmacol Res* 2020; 152:104623. 10.1016/ j.phrs.2019.104623
37. Jiao L, Dong C, Liu J, Chen Z, Zhang L, Xu J, et al. Effects of Chinese Medicine as Adjunct Medication for Adjuvant Chemotherapy Treatments of Non-Small Cell Lung Cancer Patients. *Sci Rep* 2017;7:46524. 10.1038/srep 46524
38. Kwon CY, Lee B, Kong M, Lee SH, Jung HJ, Kim KI, et al. Effectiveness and safety of herbal medicine for cancer-related fatigue in lung cancer survivors: A systematic review and meta-analysis. *Phytother Res* 2021;35(2): 751-770. 10.1002/ptr.6860

ORCID

- Im-Hak Cho <https://orcid.org/0000-0001-5793-3387>
Seong-Hoon Yoon <https://orcid.org/0000-0002-2075-4702>
So-Yeon Kim <https://orcid.org/0000-0001-9879-1477>
Byoung-Kab Kang <https://orcid.org/0000-0002-3016-2428>
Chang-Seob Seo <https://orcid.org/0000-0002-8156-446X>
Young-Eun Choi <https://orcid.org/0000-0001-6915-3716>
Hyeun Kyoo Shin <https://orcid.org/0000-0003-2319-6678>
Jun-Yong Choi <https://orcid.org/0000-0002-2075-4702>