

## Two New Records of Thaliacea (Chordata: Tunicata) in Korea

Su Yuan Seo<sup>1</sup>, Sun Woo Kim<sup>2</sup>, Jung Hye Won<sup>3,\*</sup>

<sup>1</sup>Natural History Museum, Ewha Womans University, Seoul 03760, Korea

<sup>2</sup>Korea Marine Environment Management Corporation, Seoul 05718, Korea

<sup>3</sup>Marine Biodiversity Institute of Korea, Seochon 33662, Korea

### ABSTRACT

Two pelagic thaliacean tunicates, *Pyrosoma atlanticum* and *Cyclosalpa quadriluminis*, with bioluminescent organ, were collected from Jeju Island and Korea Strait. In this study, the Pyrosomatida, which is holoplanktonic colonial tunicate with ascidiozooids embedded in a common test, and to which *P. atlanticum* belongs, is reported for the first time in Korea. The *Cyclosalpa* in the Salpida has a bar-shaped alimentary canal beside the branchial bar in both oozoids and blastozooids. *Cyclosalpa quadriluminis* is added to make *Cyclosalpa* species in Korea from four to five (*C. affinis*, *C. bakeri*, *C. polae*, *C. sewelli*, and *C. quadriluminis*). As a result of this study, 27 species of thaliaceans have been reported from Korea.

**Keywords:** taxonomy, pelagic tunicates, *Pyrosoma atlanticum*, *Cyclosalpa quadriluminis*, Korean fauna

### INTRODUCTION

There are three orders (Salpida Forbes, 1853; Pyrosomatida Lahille, 1888; Doliolida Delage and Hérouard, 1898) in the class Thaliacea Van der Haeven, 1850. Thaliaceans get their name from their propensity to proliferate rapidly when environmental conditions are favourable (thalia means 'blooming' in Greek) (Gershwin et al., 2014). To date, 25 species of thaliaceans in two orders (four species in Doliolida and 21 species in Salpida) have been reported from Korean waters (Rho, 1967; Kim et al., 2010a, 2010b, 2011, 2012, 2017; Seo et al., 2020).

The Pyrosomatida has its name from Greek words pyro (fire) and soma (body) because of its fiery bioluminescence. The Pyrosomatida is a monotypic order and the family Pyrosomatidae consists of eight species worldwide (Madin, 2022a). In Korea, none of them reported until now. They are holoplanktonic colonial tunicates with ascidiozooids embedded in a common test (Neumann, 1913; van Soest, 1979). *Pyrosoma atlanticum* Péron, 1804 is the commonest and the most widespread species. Its distribution is restricted to the warmer open ocean waters, between approximately 50°N and 50°S in all oceans (van Soest, 1981). It is known to form high density

blooms in the southeast Atlantic (Drits et al., 1992). However, *P. atlanticum* was rarely found in Korean waters. It was first collected from the southern sea of Jeju Island in May 2012. In May 2022, several colonies of *P. atlanticum* were found in Jeju Island and Korea Strait. All specimens of *P. atlanticum* were collected in May. The Pyrosomatida is firstly recorded from Korean waters in this study.

The Salpida also has a single family, Salpidae, consisting of 45 species in the world, with both solitary zooids (oozooids) and aggregate zooids (blastozooids) in the life cycle (Yount, 1954; WoRMS, 2022). In salps, the shape of alimentary canal and arrangement of body muscles are the main keys to determine the genus of Salpidae. The genus *Cyclosalpa* de Blainville, 1827 has body muscles interrupted ventrally and a bar-shaped alimentary canal beside the branchial bar in both oozooids and blastozooids (Chihara and Murano, 1997; Esnal and Daponte, 1999). Eleven species of *Cyclosalpa* have been reported in the world (Madin, 2022b) and four species [*C. bakeri* Ritter, 1905; *C. affinis* (Chamisso, 1819); *C. polae* Sigl, 1912; and *C. sewelli* Metcalf, 1927] were known from Korea (Kim et al., 2012). In this study, *Cyclosalpa quadriluminis* Berner, 1955 is added.

So, there are 27 species of thaliaceans in three orders (one

© This is an Open Access article distributed under the terms of the Creative Commons Attribution Non-Commercial License (<http://creativecommons.org/licenses/by-nc/3.0/>) which permits unrestricted non-commercial use, distribution, and reproduction in any medium, provided the original work is properly cited.

**\*To whom correspondence should be addressed**

Tel: 82-41-950-0810, Fax: 82-41-950-0811  
E-mail: [jhwon@mabik.re.kr](mailto:jhwon@mabik.re.kr)

species of Pyrosomatida, four species of Doliolida and 22 species of Salpida) in Korean waters.

## MATERIALS AND METHODS

Specimens of *Pyrosoma atlanticum* examined in this study were collected from the subtidal zones of southern and south-eastern waters in Jeju Island and Korea Strait by scuba diving or using a trawl net. Specimens of *Cyclosalpa quadriluminis* examined in this study were collected from the subtidal zone of Beomseom in Jeju Island by scuba diving.

After collection, all living specimens were preserved in 4% buffered formalin with seawater. For identification, each specimen was examined for morphological characteristics such as muscle, branchial aperture, atrial aperture, branchial bar, endostyle, alimentary canal and gonads. To see the muscle bands, specimens of *C. quadriluminis* were stained by hematoxylin after removing the test. Images of collected living samples were taken with a digital camera (Tough TG-6; Olympus, Tokyo, Japan). Images of preserved specimens were taken with a stereomicroscope (SMZ 745T; Nikon, Tokyo, Japan) equipped with a camera (UHCCD05000KPA; Touptek Photonics, Zhejiang, China). The size of the zooid was then measured using an image analyzer (Toupview 3.7; Touptek Photonics) and a ruler.

All specimens examined in this study were deposited at National Marine Biodiversity Institute of Korea (MABIK IV 00172414–IV00172415, MABIK IV00172755–IV00172758) and the Natural History Museum of Ewha Womans University (EWNHMAS4317, EWNHMAS4315).

## SYSTEMATIC ACCOUNTS

Class Thaliacea Van der Haeven, 1850

<sup>1</sup>\*Order Pyrosomatida Jones, 1848

<sup>2</sup>\*Family Pyrosomatidae Lahille, 1888

**Diagnosis.** Colonies holoplanktonic, bioluminescent, numerous zooids imbedded in gelatinous tube, zooids with broad and round branchial sac.

<sup>3</sup>\*Genus *Pyrosoma* Péron, 1804

<sup>4</sup>\**Pyrosoma atlanticum* Péron, 1804 (Fig. 1)

*Pyrosoma atlanticum* Péron, 1804: 440 (type locality: Pacific Ocean); van Soest, 1979: 200; 1981: 612; Chihara and Murano, 1997: 1353; Palma and Apablaza, 2004: 134; Gershwin et al., 2014: 10.

*Pyrosoma elegans*: Lesueur, 1813: 283.

*Pyrosoma giganteum*: Lesueur, 1815: 70.

*Pyrosoma rufum*: Quoy and Gaimard, 1824: 75; 1825: 329; 1826: 617.

*Pyrosoma ellipticum*: Brooks, 1906: 151.

*Pyrosoma triangulum*: Neumann, 1909: 709.

*Pyrosoma benthica*: Monniot C. and Monniot F., 1966: 368.

**Material examined.** Korea: 1 colony, Jeju Island, Seogwipo-si, Munseom, 33°13'39"N, 126°34'02"E, 16 May 2022, Park SW by SCUBA diving (MABIK IV00172414); 1 colony, Jeju Island, Seogwipo-si, Beomseom, 33°13'46"N, 126°30'47"E, 8 May 2022, Park SW by SCUBA diving (EWNHMAS4317); 1 colony, Jeju Island, Seogwipo-si, 33°24'56.94"N, 126°55'21.66"E, 24 May 2012, Kim SW by SCUBA diving (MABIK IV00172757); 1 colony, Korea Strait, 33°32'43.22"N, 127°36'56.90"E, 1 May 2022, Bycatch in a trawl net (MABIK IV00172756); 2 colonies, Korea Strait, 33°24'17.38"N, 127°46'38.96"E, 1 May 2022, Bycatch in a trawl net (MABIK IV00172755).

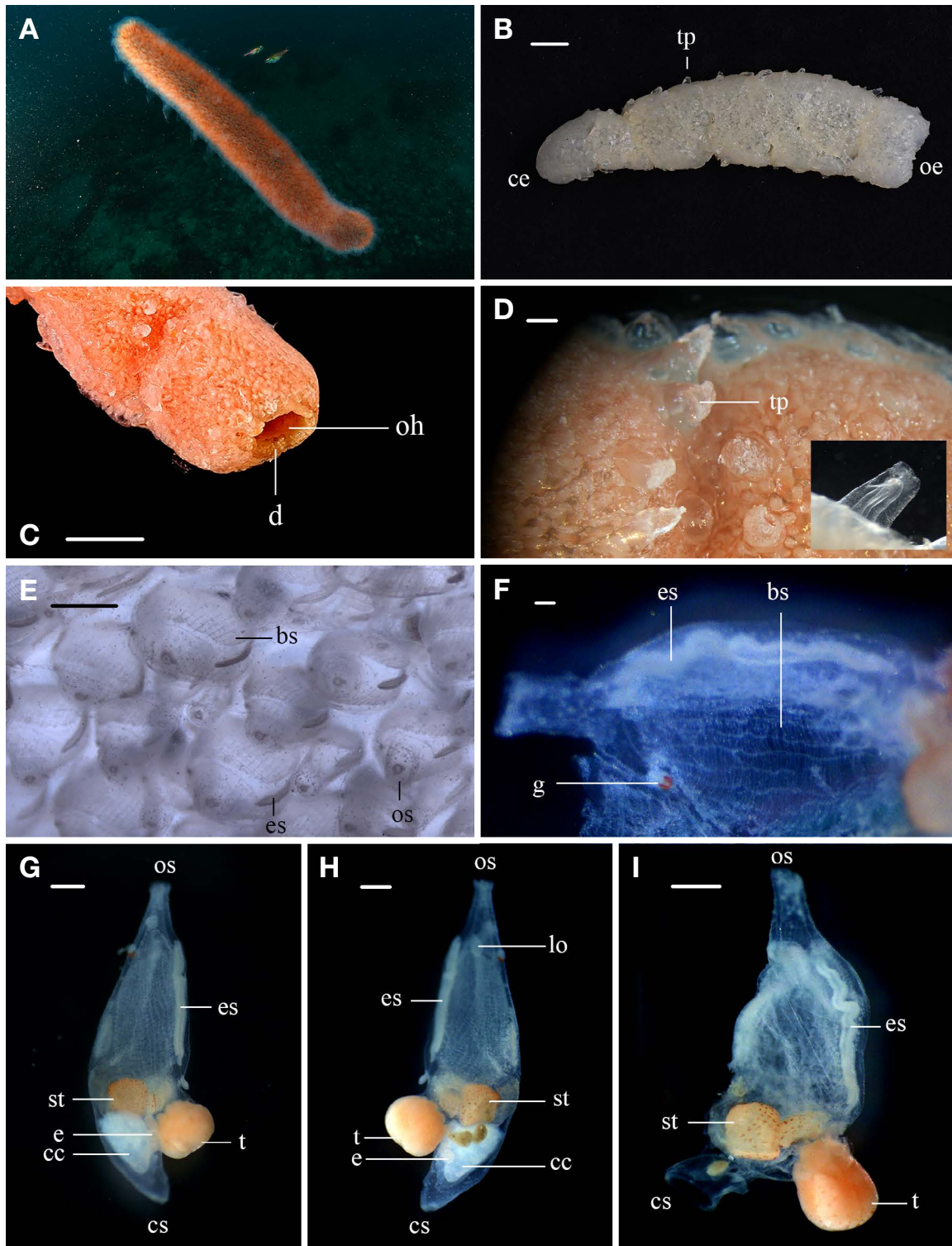
**Description.** Pelagic colonial tunicate. Colony hollow, cylindrical, finger shaped, open at one end and closed at the other narrow end. Colony about 120–140 mm long, 30 mm wide at open end and 13 mm at closed end. Colony in living and in 4% formalin reddish orange (Fig. 1A). Colony white in specimen preserved long in ethyl alcohol (Fig. 1B). Open end has strong diaphragm (Fig. 1C). Open hole of colony collected in Beomseom blocked by gastropod. Colony test very tough with some processes and fine acanthose around oral siphons. Test processes 2.8–5.5 mm long, backward pointed and a lot on surface (Fig. 1D).

Zooids closely embedded in gelatinous test. Zooids semi-transparent, 1.0–1.8 mm wide and 1.9–3.0 mm long without those of both siphons. Oral siphon 0.3–0.8 mm in length, opens upward and has round edge. Cloacal siphon 0.6–0.8 mm in length and opens obliquely downward. Ganglion simple and red. Each zooid contained light organ upper side of branchial sac. 12–15 longitudinal vessels and no folds in branchial sac. Stigmata raw 40–50. Stomach barrel shape, 0.4–0.5 mm long, yellow and red small spots in surface. Constriction between stomach and intestine. Hermaphrodite gonad on underside of body. Large testis 0.8–1.0 mm in diameter and orange. Embryo 3–4 and about 0.2 mm in diameter (Fig. 1E–I).

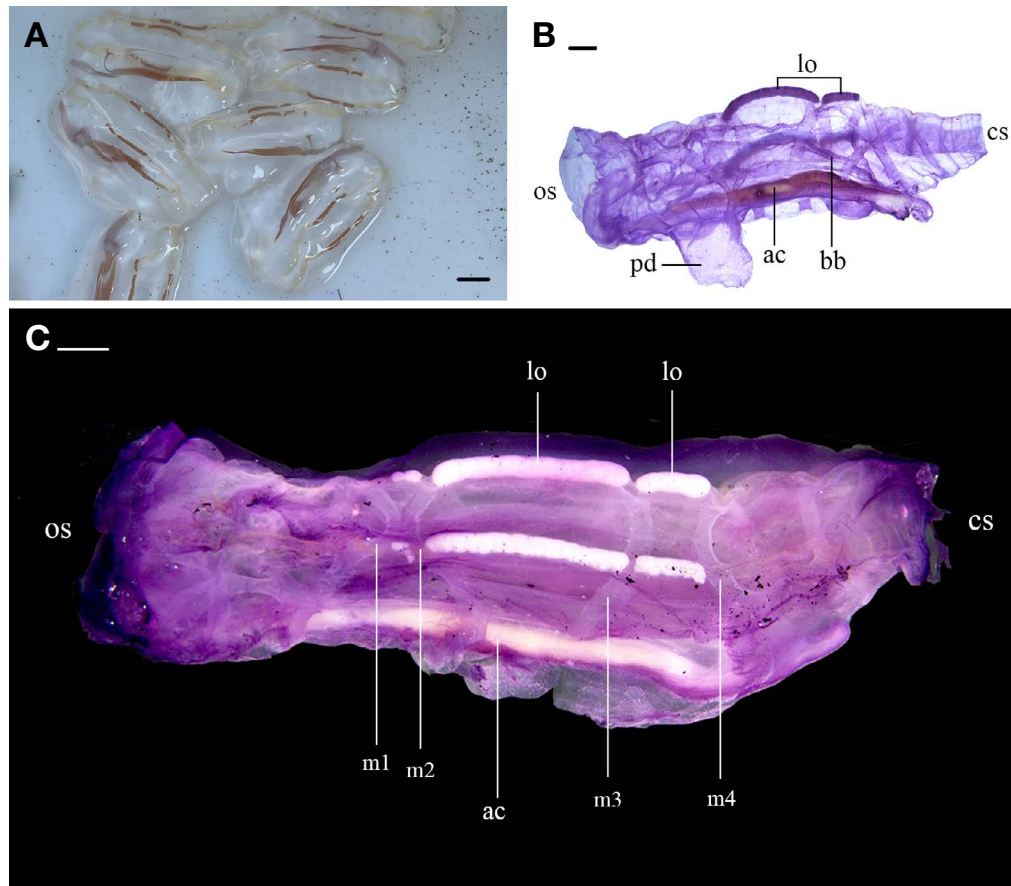
**Distribution.** Korea (present study), Pacific Ocean, Atlantic Ocean, Indian Ocean, Mediterranean Sea.

**Remarks.** *Pyrosoma atlanticum* is similar to *Pyrosoma aherniosum* Seeliger, 1895 in that the shape of colony is cylindrical (Seeliger, 1895; van Soest, 1981). However, the present species is different from *P. aherniosum* in that the size of sex-

Korean name: <sup>1</sup>\*불우렁쟁이목 (신칭), <sup>2</sup>\*불우렁쟁이과 (신칭), <sup>3</sup>\*불우렁쟁이속 (신칭), <sup>4</sup>\*불우렁쟁이 (신칭)



**Fig. 1.** *Pyrosoma atlanticum* (A-I). A, Colony in living; B, Colony in preservative; C, Open end view of colony; D, Test process of colony; E, Zooids in colony; F-I, Zooid. bs, branchial sac; cc, cloacal cavity; ce, closed end; cs, Cloacal siphon; d, diaphragm; e, embryo; es, endostyle; g, ganglion; lo, light organ; oe, open end; oh, open hole; os, oral siphon; st, stomach; t, testis; tp, test process. Scale bars: B, C=10 mm, D=0.2 mm, E=10 mm, F-I=0.5 mm.



**Fig. 2.** *Cyclosalpa quadriluminis* (A-C). A, Specimens of aggregate zooids immediately after collection; B, C, Specimen of zooid stained by hematoxylin after removing the test; B, Lateral view of specimen; C, Dorsal-lateral view showing arrangement of body muscle and light organs. ac, alimentary canal; bb, branchial bar; cs, cloacal siphon; lo, light organ; m1-m4, muscle; os, oral siphon; pd, peduncle. Scale bars: A=10 mm, B, C=3 mm.

ual mature colony is large (40–60 mm) and branchial aperture is narrower than the branchial basket (van Soest, 1981).

Class Thaliacea Van der Haeven, 1850  
Order Salpida Forbes, 1853  
Family Salpidae Lahille, 1888  
Genus *Cyclosalpa* de Blainville, 1827

<sup>1</sup>\**Cyclosalpa quadriluminis* Berner, 1955 (Fig. 2)

*Cyclosalpa pinnata* Herdman, 1888: 87; Swell, 1926: 68; Tokioka, 1937: 219; Thomson, 1948: 103; Yount, 1954: 283.

*Cyclosalpa pinnata quadriluminis*: Berner, 1955: 251; van Soest, 1974: 25.

*Cyclosalpa quadriluminis* f. *parallela*: van Soest, 1974: 25; Godeaux, 1998: 290.

*Cyclosalpa quadriluminis* f. *quadriluminis*: van Soest, 1974: 25.

*Cyclosalpa quadriluminis*: Godeaux, 1998: 290.

**Material examined.** Korea: 10 aggregated zooids, Jeju Island, Seogwipo-si, Beomseom, 33°13'46"N, 126°30'47"E, 8 May 2022, Park SW by SCUBA diving (MABIK IV00172415, MABIK IV00172758, EWNHMAS4315).

**Description.** Only aggregate forms observed. Test thick, flabby, and not solid (Fig. 2A). Zooids about 50.0 mm long and 30.1 mm wide. Peduncle about 16.7 mm long and 10.2 mm wide. Oral siphon and Cloacal siphon in opposite directions (Fig. 2B).

Body muscles four and continuous dorsally. Muscles 1 and 2 fused over dorsal midline and Muscles 3 and 4 approaching dorsally fused. Muscles 1 and 2 ventrally and extend into

Korean name: <sup>1</sup>\*네빛곧은장살파(신칭)

the peduncle (Fig. 2C). Intermediate muscles join with body muscle 1 mid-ventrally. Muscles made up of about 36 muscle fibers. Dorsal tubercle U-shaped. Branchial bar about 22.2 mm long. Alimentary canal straight and lies below endostyle. Anus anterior close to peduncle. Light organs two pairs. Two light organs long (about 10.3 mm) and present laterally between muscle 2 and muscle 3. Two light organs short (about 3.6 mm) and present laterally between muscles 3 and muscle 4 (Fig. 2C).

**Distribution.** Korea (present study), Indo-Pacific Ocean.

**Remarks.** How many pairs of light organs they have is an important key in the genus *Cyclosalpa*. *Cyclosalpa pinnata* has one pair of elongated light organs between muscle 2 and muscle 3 in aggregate form (Godeaux, 1998). However, in Siboga Expedition collection of this species, one aberrant zooid with two pairs of light organ was found (Thomson, 1948). Tokioka (1937) reported salpas in Japan and distinguished *C. pinnata* with two pairs of light organs from *C. pinnata* var. *polae* with one pair. Yount (1954) described that *C. pinnata* usually has one pair of light organs (sometimes two pairs are found in large specimens). This might be due to age difference. Berner (1955) reported this aberrant type as a new subspecies *C. p. quadriluminis*. Van Soest (1974) renamed *C. p. quadriluminis* as *C. quadriluminis quadriluminis* and described that the aggregate form of *C. quadriluminis parallela* strongly resembled *C. q. quadriluminis*. However, they were different in that *C. q. quadriluminis* had muscle 3–4 fused dorsally whereas *C. q. parallela* had muscle 3–4 approaching or touching (Godeaux, 1998). Since the difference between these two species is very weak, it might be proper to consider them as one species, *C. quadriluminis*.

## ORCID

Su Yuan Seo: <https://orcid.org/0000-0003-2597-2351>

Sun Woo Kim: <https://orcid.org/0000-0002-1592-0446>

Jung Hye Won: <https://orcid.org/0000-0002-4854-845X>

## CONFLICTS OF INTEREST

No potential conflict of interest relevant to this article was reported.

## ACKNOWLEDGMENTS

This research was supported by National Marine Biodiversity Institute of Korea (2022M00100, 2022M01100), National Institute of Fisheries Science (R2022030), and the Natural His-

tory Museum of Ewha Womans University in part. We thanks to Seung-Hwan Park (H Dive Company) for taking a picture of living thaliacean underwater.

## REFERENCES

- Berner LD, 1955. Two new pelagic tunicates from the eastern Pacific Ocean. *Pacific Science*, 9:247-253.
- Brooks WK, 1906. The affinities of the pelagic tunicates. I. On a new *Pyrosoma* (*Dipleurosoma elliptica*). *Memoirs of the National Academy of Sciences*, Washington, 10:151-155.
- Chihara M, Murano M, 1997. An illustrated guide to marine plankton in Japan. Tokai University Press, Tokyo, pp. 1-1574.
- Drits AV, Arashkevich EG, Semenova TN, 1992. *Pyrosoma atlanticum* (Tunicata, Thaliacea): grazing impact on phytoplankton standing stock and role in organic carbon flux. *Journal of Plankton Research*, 14:799-809. <https://doi.org/10.1093/plankt/14.6.799>
- Ensal GB, Daponte MC, 1999. Salpida. In: South Atlantic zooplankton (Ed., Boltovskoy D). Backhuys Publishers, Leiden, pp. 1409-1421.
- Gershwin L, Lewis M, Gowlett-Holmes K, Kloser R, 2014. The pelagic Tunicates. In: Pelagic invertebrates of South-Eastern Australia: a field reference guide. Version 1.1 CSIRO Marine and Atmospheric Research, Hobart, pp. 1-31.
- Godeaux JEA, 1998. The relationships and systematics of the Thaliacea, with key for identification. In: The biology of pelagic tunicates (Ed., Bone Q). Oxford University Press, New York, pp. 273-294.
- Herdman WA, 1888. Report upon the Tunicata collected during the voyage of H.M.S. Challenger during years 1873-76. Part III: Pelagic Tunicates. Report of the scientific results of the Voyage of HMS. Challenger during the years 1873-76: a summary of the scientific results, *Zoology*, 27:1-165.
- Kim S, Won JH, Kim CB, 2010a. A new record of *Iasis zonaria* (Salpida: Salpidae) in Korean waters. *Korean Journal of Systematic Zoology*, 26:161-163. <https://doi.org/10.5635/KJSZ.2010.26.2.161>
- Kim S, Won JH, Kim CB, 2011. Taxonomic study of the genus *Thalia* (Thaliacea: Salpida: Salpidae) from Korea. *Korean Journal of Systematic Zoology*, 27:142-150. <https://doi.org/10.5635/KJSZ.2011.27.2.142>
- Kim S, Won JH, Kim CB, 2012. Taxonomic study of genus *Cyclosalpa* (Thaliacea: Salpida: Salpidae) from Korea. *Animal Systematics, Evolution and Diversity*, 28:261-268. <https://doi.org/10.5635/ASED.2012.28.4.261>
- Kim S, Won JH, Kim CB, 2017. Report for eight species of *Salpinae* (Thaliacea: Salpida: Salpidae) from Korean waters. *Journal of Asia-Pacific Biodiversity*, 10:453-459. <https://doi.org/10.1016/j.japb.2017.09.006>
- Kim S, Won JH, Lee J, Kim CB, 2010b. A new record of *Ihleia punctata* and redescription of *Salpa fusiformis* (Salpida: Salpidae) in Korean waters. *Korean Journal of Systematic Zoolo-*

- gy, 26:353-356. <https://doi.org/10.5635/KJSZ.2010.26.3.353>
- Lesueur M, 1813. Mémoire sur quelques nouvelles espèces d'animaux mollusques et radiaires, recueillis dans la Méditerranée, près de Nice. *Nouveau Bulletin des Sciences*, Publiée par la Société Philomatique de Paris, 3:281-285.
- Lesueur M, 1815. Mémoire sur l'organisation des Pyrosomes, et sur la place qu'ils semblent devoir occuper dans une classification naturelle. *Bulletin des Sciences*, par la Société Philomatique de Paris, 1815:70-74.
- Madin L, 2022a. World list of Thaliacea. Pyrosomatida [Internet]. World Register of Marine Species, Accessed 2 Oct 2022, <<https://www.marinespecies.org/aphia.php?p=taxdetails&id=137213>>.
- Madin L, 2022b. World List of Thaliacea. Cyclosalpa de Blainville, 1827 [Internet]. World Register of Marine Species, Accessed 2 Oct 2022, <<https://www.marinespecies.org/aphia.php?p=taxdetails&id=137227>>.
- Monniot C, Monniot F, 1966. Un pyrosome benthique: *Pyrosoma benthica* n.sp. *Comptes Rendus de l'Académie des Sciences*, Paris, 263D:368-370.
- Neumann G, 1909. 3. Mitteilung über eine neue Pyrosomen Art der Deutschen Tiefsee-Expedition. *Zoologischer Anzeiger*, 33:709-711.
- Neumann G, 1913. Salpae II: Cyclomyaria et Pyrosomida. Volume 40 in *Das Tierreich Series*. R. Friedländer und Sohn, Berlin, pp. 1-36.
- Palma S, Apablaza P, 2004. First record of *Pyrosoma atlanticum* Péron, 1804 in the coastal waters of Humboldt System Current (Tunicata, Thaliacea, Pyrosomatidae). *Investigaciones Marinas*, 32:133-136. <https://doi.org/10.4067/S0717-71782004000200012>
- Péron F, 1804. Mémoire sur le nouveau genre Pyrosoma. *Annales du Muséum d'Histoire Naturelle*, 4:437-446.
- Quoy JRC, Gaimard JP, 1824-1826. Zoologie. In: *Voyage au tour du monde fait par ordre du roi sur les corvettes de S. M: l'Uranie et la Physicienne pendant les années 1817 à 1820*. (Ed., de Freycinet L). Paris, pp. 1-712.
- Rho BJ, 1967. Taxonomic studies on the Tunicata. *Korea Culture Research Institute Publication*, 10:361-371.
- Seeliger O, 1895. Die Pyrosomen der Plankton-expedition. *Ergebnisse Plankton-Expedition*, 2:3-88.
- Seo SY, Kim S, Won JH, 2020. First record of the genus and species, *Thetys vagina* (Thaliacea: Salpida: Salpidae) in Korea. *Animal Systematics, Evolution and Diversity*, 36:236-239. <https://doi.org/10.5635/ASED.2020.36.3.051>
- Sewell RS, 1926. The salpas of the Indian Seas. *Records of the Zoological Survey of India*, 28:65-126.
- Thompson H, 1948. Pelagic tunicates of Australia. Commonwealth Council for Scientific and Industrial Research, Melbourne, pp. 1-196.
- Tokioka T, 1937. Notes on salpas and doliolums occurring on the Pacific coast of middle Japan. *Annotations Zoologicae Japonenses*, 16:219-235.
- van Soest RWM, 1974. Taxonomy of the subfamily Cyclosalpininae Yount, 1954 (Tunicata, Thaliacea), with descriptions of two new species. *Beaufortia*, 22:17-55.
- van Soest RWM, 1979. Revised classification of the order Pyrosomatida (Tunicata, Thaliacea), with the description of a new genus. *Steenstrupia*, 5:197-217.
- van Soest RWM, 1981. A monograph of the order Pyrosomatida (Tunicata, Thaliacea). *Journal of Plankton Research*, 3:603-631.
- WoRMS, 2022. Salpidae Lahille, 1888 [Internet]. World Register of Marine Species, Accessed 2 Oct 2022, <<https://www.marinespecies.org/aphia.php?p=taxdetails&id=137217>>.
- Yount JL, 1954. The taxonomy of the Salpidae (Tunicata) of the central Pacific Ocean. *Pacific Science*, 8:276-330.

Received October 17, 2022  
 Revised November 23, 2022  
 Accepted November 24, 2022