



Research Article

Isolation and characterization of a lytic *Salmonella* Typhimurium-specific phage as a potential biofilm control agent

Su-Hyeon Kim^{1,2}, Mi-Kyung Park^{1,2*}

¹School of Food Science and Biotechnology, Kyungpook National University, Daegu 41566, Korea

²Food and Bio-Industry Research Institute, Kyungpook National University, Daegu 41566, Korea

Abstract This study aimed to characterize a lytic *Salmonella* Typhimurium-specific (ST) phage and its biofilm control capability against *S. Typhimurium* biofilm on polypropylene surface. ST phage was isolated, propagated, and purified from water used in a slaughterhouse. The morphology of ST phage was observed via transmission electron microscopy. Its bactericidal effect was evaluated by determining bacterial concentrations after the phage treatment at various multiplicities of infection (MOIs) of 0.01, 1.0, and 100. Once the biofilm was formed on the polypropylene tube after incubation at 37°C for 48 h, the phage was treated and its antibiofilm capability was determined using crystal violet staining and plate count method. The phage was isolated and purified at a final concentration of ~11 log PFU/mL. It was identified as a myophage with an icosahedral head (~104 nm) and contractile tail (~90-115 nm). ST phage could significantly decrease *S. Typhimurium* population by ~2.8 log CFU/mL at an MOI of 100. After incubation for 48 h, biofilm formation on polypropylene surface was confirmed with a bacterial population of ~6.9 log CFU/cm². After 1 h treatment with ST phage, the bacterial population in the biofilm was reduced by 2.8 log CFU/cm². Therefore, these results suggest that lytic ST phage as a promising biofilm control agent for eradicating *S. Typhimurium* biofilm formed on food contact surfaces.

Keywords lytic phage, *Salmonella* Typhimurium, biofilm control, biocontrol, polypropylene



OPEN ACCESS

Citation: Kim SH, Park MK. Isolation and characterization of a lytic *Salmonella* Typhimurium-specific phage as a potential biofilm control agent. Korean J Food Preserv, 30(1), 42-51 (2023)

Received: January 19, 2023
Revised: January 30, 2023
Accepted: February 01, 2023

***Corresponding author**
Mi-Kyung Park
Tel: +82-53-950-5776
E-mail: parkmik@knu.ac.kr

Copyright © 2023 The Korean Society of Food Preservation. This is an Open Access article distributed under the terms of the Creative Commons Attribution Non-Commercial License (<http://creativecommons.org/licenses/by-nc/4.0>) which permits unrestricted non-commercial use, distribution, and reproduction in any medium, provided the original work is properly cited.

1. Introduction

Salmonella is one of the most common and serious foodborne pathogens worldwide owing to its ubiquitous existence and excellent survival in agricultural environments (Oh and Park, 2017; Scallan et al., 2011). According to the Centers for Disease Control and Prevention (CDC), *Salmonella* causes approximately 1.35 million outbreaks and 26,500 hospitalizations annually in the USA (CDC, 2021). These frequent *Salmonella* outbreaks are associated with its persistent survival under environmental stress conditions in food processing facilities due to its biofilm formation on the food contact and/or food surfaces (Park et al., 2013; Reij et al., 2004; Rodrigues et al., 2011).

A biofilm is defined as “an aggregation of microorganisms embedded within a

matrix of extracellular polymeric substance (EPS)” (Vert et al., 2012). Once *Salmonella* contaminated and reversibly attached on the food contact surface, such as polypropylene (PP), rubber, and glass, it mediates an irreversible attachment by producing fimbriae (cellulose and curli) or flagella. Subsequently, the attached *Salmonella* forms bacterial aggregates and synthesizes EPS to develop the complex structure of a mature biofilm (Suslow et al., 2000). *Salmonella* biofilm formed on the industrial food facilities can lead to numerous *Salmonella* outbreaks due to its cross-contamination during food processing (Corcoran et al., 2014). Moreover, *Salmonella* embedded within its biofilm can survive during harvest, transport, processing, and storage because it plays an essential role in protecting the bacteria and reducing the efficacy of sanitizers used for washing (e.g., chlorine, hydrogen peroxide, vinegar, and iodine) (Bassam et al., 2005; Vanessa et al., 2012).

The formation and maturation of *Salmonella* biofilm are influenced by several environmental factors such as surface topology, temperature, pH, and nutrients (Zhao et al., 2017). *Salmonella* can form its biofilms on various food contact surfaces such as polyvinylchloride, polyethylene, polystyrene, glass, rubber, and PP (Garcia et al., 2017; Islam et al., 2019; Tiwari et al., 2013). In particular, PP is one of the most popular food packaging materials that has been approved by the Food and Drug Administration (FDA) (Wu et al., 2021). Thus, there is an increasing interest in searching for an effective strategy for controlling *Salmonella* biofilm on PP surface.

Bacteriophages (phages) have emerged as promising biocontrol alternatives for controlling foodborne pathogen and their biofilm due to their ubiquitous existence, specificity, and bactericidal

effect (Azeredo et al., 2021; Choi et al., 2017; Endersen et al., 2014; Sarhan and Azzazy, 2015). Phages can specifically infect desired target pathogens using the lytic cycle. Since 2006, several commercial phages have been approved by the FDA as “food additives”; e.g., SalmoFresh™ (Intralytix Inc.), PhageGuard S™ (Microcos Co., Wageningen, Netherlands), SalmoPro® (Phagelux Inc., Shanghai, China), and SalmoFREE® (LANXESS Inc, Cologne, Germany). Additionally, some phages have recently been considered as potential biocontrol candidates to control biofilm due to their lytic activity and EPS degrading ability via depolymerase activity (Fu et al., 2010; Meng et al., 2011). Despite numerous studies on phages, only few *Salmonella* phages have been reported and employed for controlling *Salmonella* biofilm (Iibuchi et al., 2010; Tiwari et al., 2013) on food contact surfaces, such as polystyrene, glass, rubber, and stainless steel. Thus, the purpose of this study was to isolate, purify, and characterize a lytic *S. Typhimurium*-specific phage as an effective biocontrol agent for *S. Typhimurium* biofilms.

2. Materials and methods

2.1. Bacterial strain and growth condition

Salmonella Typhimurium ATCC 13311 was obtained from the American Type of Culture Collection (ATCC) and was cultivated using tryptic soy broth (TSB, Difco Laboratories Inc., Sparks, MD, USA) by incubating at 37°C for 16 h. After centrifugation of the bacterial suspension at 7,000 × *g* for 4 min, the bacterial pellet was washed with phosphate- buffered saline (PBS 1×, pH 7.4, Life Technologies Co., Carlsbad, CA, USA) by repeating three times. The concentration of the bacterial suspension was adjusted to 8 log CFU/mL based on its optical density

(OD) at 600 nm.

2.2. Isolation, propagation, and purification of the phage

For phage isolation, the mixture of bacterial suspension (1%, v/v), TSB (250 mL), and the sample acquired from water used in a slaughterhouse (25 mL, Gumi, Gyeongsangbuk-do, Korea) was incubated at 37°C for 16 h. After centrifugation at 2,400 ×g for 20 min and filtration using a 0.22 μm pore size-filter (Advantec Toyo Kaisha Ltd., Tokyo, Japan), the presence of the phage in the filtrate was confirmed using plaque assay following this procedure: TA soft agar (0.4% agar) containing 100 μL of the phage suspension and 200 μL of the bacterial suspension (~8 log CFU/mL) was poured onto pre-solidified tryptic soy agar (TSA) plates and incubated at 37°C for 16 h (plaque assay). Once the plaques of ST phage were visible on the TSA plates, they were eluted with 1 mL of sodium chloride- magnesium sulfate (SM) buffer (50 mM/L Tris-HCl, 100 mM NaCl, and 10 mM MgSO₄, pH 7.5).

The isolated phage acquired from the plaques was propagated by two-step incubation procedures (Gwak et al., 2018; Kim et al., 2022). First, 1% (v/v) of *S. Typhimurium* ATCC 13311 suspension and TA broth (8 g/L nutrient broth, 5 g/L NaCl, 0.2 g/L MgSO₄, 0.05 g/L MnSO₄, and 0.15 g/L CaCl₂) was incubated at 37°C for 2 h, and then the eluted phage solution was added followed by incubation at 37°C for 2 h. After centrifugation of the mixture at 6,000 ×g for 20 min and filtration using a 0.22 μm filter, the filtered supernatant was used instead of phage solution. This propagation was rerun by increasing volumes of host bacteria and TA broth by 3, 20, and 200 mL. Afterward, the phage was purified by polyethylene glycol 6000 (Sigma-Aldrich Co., St. Louis, MO, USA) precipitation and ultracentrifugation at 7,200 ×g for 120 min based on the previously

described method (Lee et al., 2020). Finally, the obtained opalescent band was dialyzed by incubation into 2 L of SM buffer for 4 h (Kim et al., 2021). The final titer of the purified *S. Typhimurium*-specific phage (hereafter referred to as ST phage) was determined using plaque assay.

2.3. Morphological characteristics of ST phage

The morphological characteristic of ST phage was investigated by observing using transmission electron microscopy (TEM, H-7700, Hitachi Ltd., Tokyo, Japan) (Kim et al., 2021). ST phage was deposit on a copper grid by dipping into ST phage suspension for 1 min. Once ST phage was treated with 1% uranyl acetate (Sigma-Aldrich Co.), TEM analysis was conducted at a voltage of 100 kV with 10,000× magnification.

2.4. In vitro challenge assay of ST phage

To evaluate the bactericidal activity of ST phage, *S. Typhimurium* suspension (~7 log CFU/mL) was treated with ST phage at multiplicities of infection (MOIs) of 0.01, 1, and 100, and then incubated at 37°C for 10 h. SM buffer was used in the control for comparison. The viable bacterial concentration was enumerated using xylose lysine deoxycholate (XLD, Difco Laboratories Inc.) plate count method at every 2-h interval.

2.5. Biofilm control capability of ST phage against *S. Typhimurium* biofilm formed on PP surface

2.5.1. Biofilm formation on PP surface

One milliliter of overnight culture of *S. Typhimurium* (~6 log CFU/mL) was loaded into a sterilized polypropylene (PP) tube. It was incubated at 37°C for 2 days under static condition to form biofilm on PP. TSB without bacterial suspension was used as a negative control. Next, the PP tube was washed

thrice with filtered distilled water (FDW) to eliminate unattached *S. Typhimurium*. After drying the washed tube for 1 h, biofilm formation on the PP tube was confirmed via optical microscopy (Singh et al., 2016). Subsequently, the PP tube containing *S. Typhimurium* biofilm was used for phage treatment (indicated in 2.5.2. section).

2.5.2. Assessment of the antibiofilm capability of ST phage

Each PP tube was submerged into 5 mL of ST phage solution with an MOI of 100 and incubated for 2 h with gentle agitation. PBS was used instead of phage treatment as a negative control. Phage treated tube was washed thrice with FDW. *S. Typhimurium* biofilm on PP surface was stained with 2 mL of crystal violet (CV, Sigma-Aldrich Co.) followed by incubation at 22°C for 15 min. The CV complex incorporated into *S. Typhimurium* biofilm was dissolved by adding 1 mL of ethanol:acetone (8:2, v/v) solution before measuring the OD at 600 nm using a spectrophotometer (Agilent Technologies Inc., Santa Clara, CA, USA). Further, 5 mL of PBS was added to the other tube containing *S.*

Typhimurium biofilm and the tube was vortexed vigorously. The detached *S. Typhimurium* from the biofilm was enumerated using XLD (Difco Laboratories Co.) agar plate count method at 30 min intervals to determine the biofilm population.

2.6. Statistical analysis

Experiments were conducted in triplicate, and data were expressed as the mean \pm standard deviation. Statistical analysis was performed using InStat V.9 (GraphPad, San Diego, CA, USA). One-way analysis of variance was applied for the comparison of data among groups. Differences among the mean values were analyzed by the Duncan's multiple range test, and p values of <0.05 were considered to indicate statistical significance.

3. Results and discussion

3.1. Isolation, propagation, and purification of ST phage

ST phage was isolated from rinsing water obtained from rinsing water obtained from a slaughterhouse. It formed a clear round plaque with a diameter of 8.1 ± 0.7 mm after incubation (Fig. 1(A)). After phage

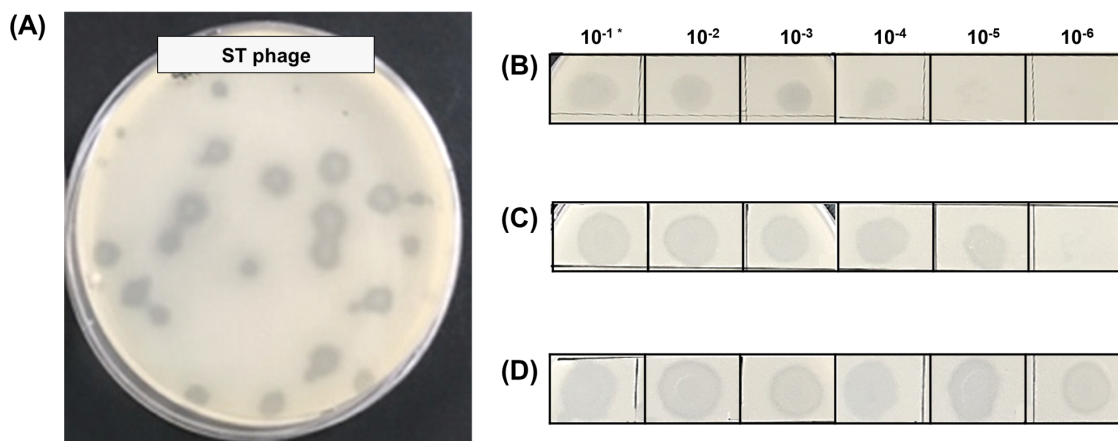


Fig. 1. (A) Plaque morphology of ST phage and its high-titer propagation by increasing the volume of the mixture of bacteria and media by (B) 3 mL, (C) 20 mL, and (D) 200 mL. The symbol (°) indicates the dilution factors of ST phage. Phage concentrations were estimated as ~ 5 , ~ 6 , and ~ 8 PFU/mL from the presence of phage plaques at various dilution factors of (B), (C), and (D), respectively.

isolation, its initial concentration was $4.2 \pm 0.2 \times 10^4$ plaque-forming unit (PFU)/mL (data not shown). After high-titer propagation, ST phage was increased to the concentration of ~ 5 (Fig. 1(B)), ~ 6 (Fig. 1(C)), and ~ 8 log PFU/mL (Fig. 1(D)) as the amount of medium and *S. Typhimurium* increased to 3 mL, 20 mL, and 200 mL. ST phage was finally propagated and purified at a high concentration of $(3.5 \pm 0.4) \times 10^{11}$ PFU/mL. TSA and XLD agar plates inoculated with the purified ST phage did not exhibit any bacterial colonies (Fig. S1). The guidelines of the United States Department of Agriculture (USDA) and FDA (21CFR 172.785) to use phages as food additives included criteria regarding the high microbial purity and production titer (>10 log PFU/mL) of the isolated lytic phages (Lang, 2006; Oliveira et al., 2012). As our propagated and purified phage met these requirements, ST phage is suitable for use as a biocontrol agent in food products.

3.2. Morphological characteristics of ST phage

TEM analysis revealed that ST phage had an icosahedral head with a length of 101.1 ± 5.7 nm and contractile tail with a length ranging from 80.2 nm to 125.5 nm (Fig. 2). Tailed phages are generally divided into several families based on their tail morphology (Zinke et al., 2022). According to the International Committee on Taxonomy of Viruses, *Podoviridae* and *Autographiviridae* have a short tail, whereas *Siphoviridae*, *Drexlerviridae*, and *Demereciviridae* have a flexible, long, and non-contractile tail. Unlike these phages, our ST phage was categorized as a myophage, which include families, such as *Myoviridae*, *Ackermannviridae*, *Chaseviridae*, and *Herelleviridae*, due to its possession of an icosahedral head and long, contractile tail (Zinke et al., 2022). The head and tail lengths of ST phage were longer than those of other *Salmonella*

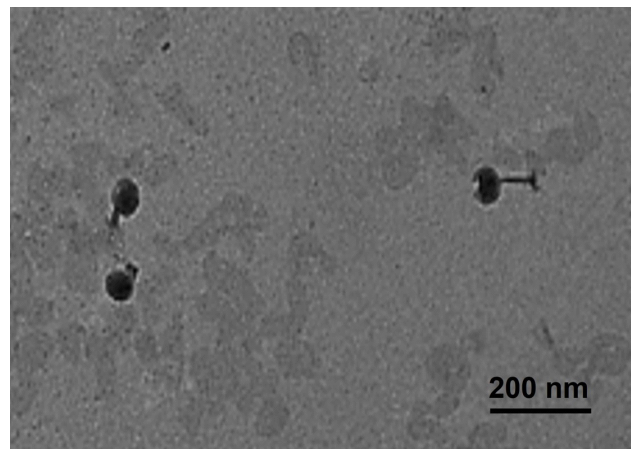


Fig. 2. Morphology of *S. Typhimurium*-specific phage observed using a transmission electron micrograph at a magnification of $\times 40$ k. The bar indicates a magnification size of 200 nm.

myophages, such as pSal-SNUABM-02 (Kwon et al., 2020), LPST94 (Islam et al., 2020), PS5 (Duc et al., 2020), and ZCSE2 (Mohamed et al., 2020). In contrast, the tail length of ST phage was shorter tail length than those of phage SPHG3 (Kalatzis et al., 2016) and LSE7621 (Liu et al., 2020). Thus, ST phage was proposed to be a newly isolated *Salmonella* phage based on its distinct morphological differences when compared to other *Salmonella* myophages.

3.3. Bactericidal activity of ST phage

To determine the ideal conditions before its application on PP surface, the bactericidal effects of ST phage were compared at various MOIs of 0.01, 1.0, and 100 (Fig. 3). After 2 h of ST phage treatment, a significant decrease in *S. Typhimurium* population was initially observed; subsequently, compared with the control, its concentration reduced by ~ 2.8 log CFU/mL at an MOI of 100 ($p < 0.05$). The overall bacterial reduction was associated with high MOI values of the phage. Then, bacterial regrowth sharply occurred until 6 h, and no significant differences were observed after 8 h ($p > 0.05$). However, the bacterial reduction by ST phage was

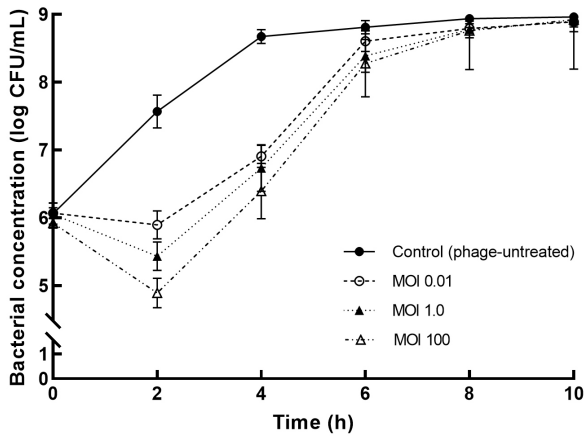


Fig. 3. *In vitro* challenge assay of *S. Typhimurium*-specific phage at various MOIs. Values are expressed as mean±SD (n=3).

greater than that by other *Salmonella* phages, such as PS5 at an MOI of 100 (reduction by 1.77 log CFU/mL) (Duc et al., 2020), SFP10 at an MOI of 10,000 (reduction by 2.00 log CFU/mL) (Park et al., 2012), and fmb-p1 at an MOI of 1 (reduction by 2.49 log CFU/mL) (Wang et al., 2017). Thus, ST phage is a potential effective biocontrol agent as it can effectively control *S. Typhimurium* over a 2 h treatment period. Because regrowth occurred after the 2 h exposure, the antibiofilm potential of the ST phage was investigated within 2 h to ensure its performance on PP surface. Thus, the ideal phage treatment conditions in a PP tube were determined to be an MOI of 100 and 2 h exposure based on the most effective bactericidal effect of ST phage.

3.4. Antibiofilm capability of ST phage against S. Typhimurium biofilm on polypropylene

The antibiofilm potential of ST phage was evaluated based on biofilm biomass, as determined using CV staining (Fig. 4), and biofilm population, as estimated using the plate count method (Fig. 5). After incubation for 24 h, the formation of *S. Typhimurium* biofilm on PP surface was confirmed

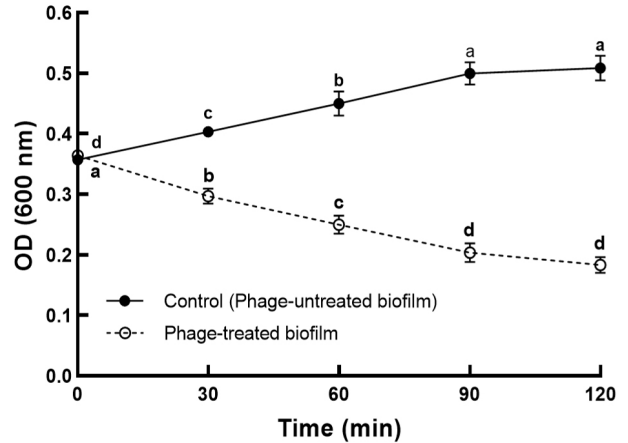


Fig. 4. Antibiofilm capability of *S. Typhimurium*-specific phage against *S. Typhimurium* biofilm on polypropylene surface, as determined using the crystal violet staining method. Values are expressed as mean±SD (n=3). Different superscript letters (^{a-d}) indicate a significant difference within each control and phage treatment group (p<0.05).

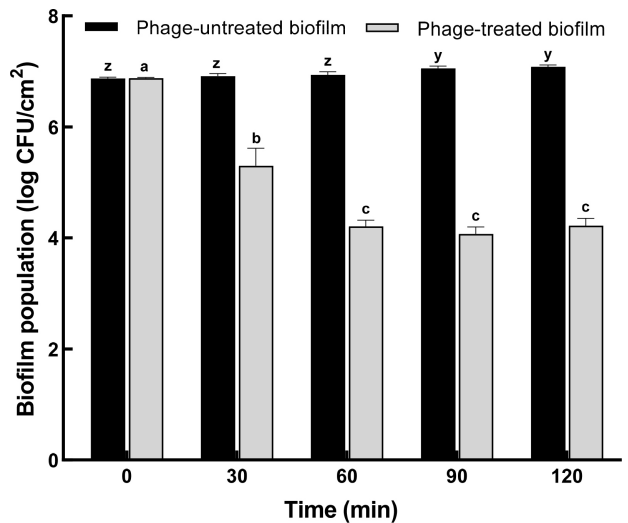


Fig. 5. Population of *S. Typhimurium* biofilm population on polypropylene surface before and after *S. Typhimurium*-specific phage treatment. Values are expressed as mean±SD (n=3). Different superscript letters within each control (^{z-y}) and phage treatment group (^{a-c}) indicate a significant difference (p<0.05).

by CV staining. Based on the result of the bactericidal effect, ST phage was added at an MOI of 100 for the control of biofilm formed on PP surface. Compared to the control, the absorbance of CV-stained biofilm on PP surface significantly

reduced until 90 min of phage treatment ($p < 0.05$) (Fig. 4). No further increase was observed over the next 90 min, indicating no biofilm regrowth on PP surface. CV staining is one of the most common methods for biofilm quantification. It provides the total biofilm biomass as CV can stain both viable and dead cells in its matrix (Azeredo et al., 2017). Furthermore, viable *S. Typhimurium* cells in biofilm (biofilm population) were determined using the XLD plate count method (Fig. 5). *S. Typhimurium* biofilm formed and matured on the PP tube surface with a biofilm population of $6.9 \pm 0.15 \log \text{ CFU/cm}^2$. Subsequently, ST phage treatment significantly reduced the biofilm population on PP surface by $1.6 \pm 0.1 \log \text{ CFU/mL}$ at 30 min and $2.8 \pm 0.12 \log \text{ CFU/mL}$ at 60 min ($p < 0.05$), and this reduction was sustained after 60 min.

So far, only few studies have been reported on controlling *Salmonella* biofilm on food contact surfaces using *Salmonella* phages. As the absorbance values obtained following the CV staining method cannot be compared objectively, the biofilm inhibition rate was used to compare the efficacy of phage treatment among different studies. Our ST phage inhibited *S. Typhimurium* biofilm formation with a capability of $\sim 63\%$ at an MOI of 100 after 2 h treatment (Fig. 4). A previous study (Islam et al., 2019) reported a comparable capability (44%–63%) of a phage cocktail comprising LPSTLL, LPST94, and LPST153 against *S. Typhimurium* biofilm on polystyrene plates. Another study (Kuźmińska-Bajor et al., 2022) reported that the phage cocktail of UPWr_S1, UPWr_S3, and UPWr_S4 exhibited high ($\sim 98\%$) or comparable ($\sim 69\%$) capabilities against *S. Enteritidis* biofilm on polystyrene or stainless steel, respectively, at an MOI of 10. Additionally, the antibiofilm potential ($\sim 2.8 \log \text{ CFU/cm}^2$) of our phage was greater than that ($> 1 \log \text{ CFU/cm}^2$) of PVP-SE2 phage

against *S. Enteritidis* biofilm on stainless steel (Milho et al., 2018) or was comparable to that ($\sim 2\text{--}3 \log \text{ CFU/cm}^2$) of a phage cocktail (BP 1,369 and BP 1,370) against *S. Typhimurium* biofilm on stainless steel and rubber (Sadekuzzaman et al., 2018). These results suggest the sufficient antibiofilm potential of ST phage for use as a biocontrol agent in the food industry.

4. Conclusion

Several studies have demonstrated the antibacterial activity of *Salmonella* phages, however, their application for controlling *Salmonella* biofilm is limited. In this study, a lytic ST phage isolated from a slaughterhouse exhibited a bactericidal effect and antibiofilm capability. Therefore, ST phage can be used as an effective biocontrol agent in the food industry. Since the relationship between antibiofilm capability of phages and phage-derived enzymes (Chang et al., 2022), the future study will focus on the genetic characterization of ST phage to identify the existence of phage-derived depolymerase and/or endolysin.

Supplementary materials

Supplementary materials are only available online from: <https://doi.org/10.11002/kjfp.2023.30.1.42>.

Acknowledgements

This research was supported by Kyungpook National University Research Fund, 2021.

Conflict of interests

The authors declare no potential conflicts of interest.

Author contributions

Conceptualization: Kim SH, Park MK. Methodology: Kim SH. Formal analysis: Kim SH. Validation: Kim SH,

Park MK. Writing - original draft: Kim SH. Writing - review & editing: Park MK.

Ethics approval

This article does not require IRB/IACUC approval because there are no human and animal participants.

ORCID

Su-Hyeon Kim (First author)

<https://orcid.org/0000-0001-9025-3543>

Mi-Kyung Park (Corresponding author)

<https://orcid.org/0000-0003-1182-6046>

References

- Azeredo J, Azevedo NF, Briandet R, Cerca N, Coenye T, Costa AR, Desvaux M, Di Bonaventura G, Hebraud M, Jaglic Z. Critical review on biofilm methods. *Crit Rev Microbiol*, 43, 313-351 (2017)
- Azeredo J, Garcia P, Drulis-Kawa Z. Targeting biofilms using phages and their enzymes. *Curr Opin Biotechnol*, 68, 251-261 (2021)
- CDC. Centers for disease control and prevention, national center for emerging and zoonotic infectious diseases, division of foodborne, waterborne, and environmental diseases. Available from: <https://www.cdc.gov/salmonella/index.html>. Accessed Dec. 12, 2022.
- Chang C, Yu X, Guo W, Guo C, Guo X, Li Q, Zhu Y. Bacteriophage-mediated control of biofilm: A promising new dawn for the future. *Front Microbiol*, 13, 825828 (2022)
- Choi IY, Lee JH, Kim HJ, Park MK. Isolation and characterization of a novel broad-host-range bacteriophage infecting *Salmonella enterica* subsp. *enterica* for biocontrol and rapid detection. *J Microbiol Biotechnol*, 27, 2151-2155 (2017)
- Corcoran M, Morris D, De Lappe N, Oconnor J, Lalor P, Dockery P, Cormican M. Commonly used disinfectants fail to eradicate *Salmonella enterica* biofilms from food contact surface materials. *Appl Environ Microbiol*, 80, 1507- 1514 (2014)
- Duc HM, Son HM, Yi HPS, Sato J, Ngan PH, Masuda Y, Honjoh KI, Miyamoto T. Isolation, characterization and application of a polyvalent phage capable of controlling *Salmonella* and *Escherichia coli* O157: H7 in different food matrices. *Food Res Int*, 131, 108977 (2020)
- Endersen L, Omahony J, Hill C, Ross RP, McAuliffe O, Coffey A. Phage therapy in the food industry. *Annu Rev Food Sci Technol*, 5, 327-349 (2014)
- Fu W, Forster T, Mayer O, Curtin JJ, Lehman SM, Donlan RM. Bacteriophage cocktail for the prevention of biofilm formation by *Pseudomonas aeruginosa* on catheters in an *in vitro* model system. *Antimicrob Agents Chemother*, 54, 397-404 (2010)
- Garcia KCDOD, De Oliveira Correa IM, Pereira LQ, Silva TM, Mioni MDSR, De Moraes Izidoro AC, Bastos IHV, Goncalves GaM, Okamoto AS, Andreatti Filho RL. Bacteriophage use to control *Salmonella* biofilm on surfaces present in chicken slaughterhouses. *Poult Sci*, 96, 3392-3398 (2017)
- Gwak KM, Choi IY, Lee J, Oh JH, Park MK. Isolation and characterization of a lytic and highly specific phage against *Yersinia enterocolitica* as a novel biocontrol agent. *J Microbiol Biotechnol*, 28, 1946-1954 (2018)
- Iibuchi R, Hara-Kudo Y, Hasegawa A, Kumagai S. Survival of *Salmonella* on a polypropylene surface under dry conditions in relation to biofilm-formation capability. *J Food Prot*, 73, 1506-1510 (2010)
- Islam MS, Zhou Y, Liang L, Nime I, Liu K, Yan T, Wang X, Li J. Application of a phage cocktail for control of *Salmonella* in foods and reducing biofilms. *Viruses*, 11, 841 (2019)
- Islam MS, Zhou Y, Liang L, Nime I, Yan T, Willis SP, Mia MZ, Bei W, Connerton IF, Fischetti VA. Application of a broad range lytic phage LPST94 for biological control of *Salmonella* in foods. *Microorganisms*, 8, 247 (2020)
- Kalatzis PG, Bastias R, Kokkari C, Katharios P.

- Isolation and characterization of two lytic bacteriophages, ϕ st2 and ϕ grn1; phage therapy application for biological control of *Vibrio alginolyticus* in aquaculture live feeds. *PloS One*, 11, e0151101 (2016)
- Kim SH, Adeyemi DE, Park MK. Characterization of a new and efficient polyvalent phage infecting *E. coli* O157: H7, *Salmonella* spp., and *Shigella sonnei*. *Microorganisms*, 9, 2105 (2021)
- Kim SH, Park YR, Jung H, Park MK. Characterization of a lytic phage kfs-ec3 infecting multiple foodborne pathogens. *Korean J Food Preserv*, 29, 1022-1034 (2022)
- Kuzminska-Bajor M, Korzeniowski P, Sliwka P, Kuczkowski M, Misic D, Milcarz A. Bacteriophage cocktail can effectively control *Salmonella* biofilm in poultry housing. *Front Microbiol*, 13, 901770 (2022)
- Kwon J, Kim SG, Kim HJ, Giri SS, Kim SW, Lee SB, Park SC. Isolation and characterization of *Salmonella* jumbo-phage pSal-SNUABM-04. *Viruses*, 13, 27 (2021)
- Lang LH. FDA approves use of bacteriophages to be added to meat and poultry products. *Gastroenterology*, 131, 1370 (2006)
- Lee C, Choi IY, Park DH, Park MK. Isolation and characterization of a novel *Escherichia coli* O157: H7-specific phage as a biocontrol agent. *J Environ Health Sci Engineer*, 18, 189-199 (2020)
- Liu A, Liu Y, Peng L, Cai X, Shen L, Duan M, Ning Y, Liu S, Li C, Liu Y. Characterization of the narrow-spectrum bacteriophage LSE7621 towards *Salmonella* Enteritidis and its biocontrol potential on lettuce and tofu. *LWT*, 118, 108791 (2020)
- Meng X, Shi Y, Ji W, Meng X, Zhang J, Wang H, Lu C, Sun J, Yan Y. Application of a bacteriophage lysin to disrupt biofilms formed by the animal pathogen *Streptococcus suis*. *Appl Environ Microbiol*, 77, 8272-8279 (2011)
- Milho C, Silva MD, Melo L, Santos S, Azeredo J, Sillankorva S. Control of *Salmonella* Enteritidis on food contact surfaces with bacteriophage PVP-SE2. *Biofouling*, 34, 753-768 (2018)
- Mohamed A, Taha O, El-Sherif HM, Connerton PL, Hooton SP, Bassim ND, Connerton IF, El-Shibiny A. Bacteriophage ZCSE2 is a potent antimicrobial against *Salmonella enterica* serovars: Ultrastructure, genomics and efficacy. *Viruses*, 12, 424 (2020)
- Oh JH, Park MK. Recent trends in *Salmonella* outbreaks and emerging technology for biocontrol of *Salmonella* using phages in foods: A review. *J Microbiol Biotechnol*, 27, 2075-2088 (2017)
- Oliveira J, Castilho F, Cunha A, Pereira M. Bacteriophage therapy as a bacterial control strategy in aquaculture. *Aquaculture Int*, 20, 879-910 (2012)
- Park M, Lee JH, Shin H, Kim M, Choi J, Kang DH, Heu S, Ryu S. Characterization and comparative genomic analysis of a novel bacteriophage, sfp10, simultaneously inhibiting both *Salmonella enterica* and *Escherichia coli* O157: H7. *Appl Environ Microbiol*, 78, 58-69 (2012)
- Park MK, Park JW, Wickle Iii HC, Chin BA. Evaluation of phage-based magnetoelastic biosensors for direct detection of *Salmonella* Typhimurium on spinach leaves. *Sens Actuators B Chem*, 176, 1134-1140 (2013)
- Reij M, Den Aantrekker E, Force IERaIMT. Recontamination as a source of pathogens in processed foods. *Int J Food Microbiol*, 91, 1-11 (2004)
- Rodrigues D, Teixeira P, Oliveira R, Azeredo J. *Salmonella enterica* Enteritidis biofilm formation and viability on regular and triclosan-impregnated bench cover materials. *J Food Prot*, 74, 32-37 (2011)
- Sadekuzzaman M, Mizan MFR, Yang S, Kim HS, Ha SD. Application of bacteriophages for the inactivation of *Salmonella* spp. in biofilms. *Food Sci Technol Int*, 24, 424-433 (2018)
- Sarhan WA, Azzazy HM. Phage approved in food, why not as a therapeutic? *Expert Rev Anti Infect*

- Ther, 13, 91-101 (2015)
- Scallan E, Hoekstra RM, Angulo FJ, Tauxe RV, Widdowson MA, Roy SL, Jones JL, Griffin PM. Foodborne illness acquired in the United States – Major pathogens. *Emerg Infect Dis*, 17, 7 (2011)
- Singh A, Gupta R, Pandey R. Rice seed priming with picomolar rutin enhances rhizospheric *Bacillus subtilis* CIM colonization and plant growth. *PLoS One*, 11, e0146013 (2016)
- Suslow T, Zunega M, Wu J, Harris L, Parnell T. Potential for Transference of Inoculated and Indigenous Bacteria from the Non-Wounded Rind of Melons to the Interior Edible Flesh. 2000 Annual Meeting, International Association of Food Protection, Atlanta, GA.
- Tiwari BR, Kim S, Kim J. A virulent *Salmonella enterica* serovar Enteritidis phage SE2 with a strong bacteriolytic activity of planktonic and biofilmed cells. *J Bacteriol Virol*, 43, 186-194 (2013)
- Vert M, Doi Y, Hellwich KH, Hess M, Hodge P, Kubisa P, Rinaudo M, Schue F. Terminology for biorelated polymers and applications (iupac recommendations 2012). *Pure Appl Chem*, 84, 377-410 (2012)
- Wang C, Chen Q, Zhang C, Yang J, Lu Z, Lu F, Bie X. Characterization of a broad host-spectrum virulent *Salmonella* bacteriophage fmb-p1 and its application on duck meat. *Virus Res*, 236, 14-23 (2017)
- Wu X, Liu P, Shi H, Wang H, Huang H, Shi Y, Gao S. Photo aging and fragmentation of polypropylene food packaging materials in artificial seawater. *Water Research*, 188, 116456 (2021)
- Zhao X, Zhao F, Wang J, Zhong N. Biofilm formation and control strategies of foodborne pathogens: Food safety perspectives. *RSC Adv*, 7, 36670-36683 (2017)
- Zinke M, Schroder GF, Lange A. Major tail proteins of bacteriophages of the order *Caudovirales*. *J Biol Chem*, 298, 101472 (2022)