

### Infectious Disease

pISSN 2466-1384 · eISSN 2466-1392  
Korean J Vet Res 2023;63(4):e37  
<https://doi.org/10.14405/kjvr.20230037>

#### \*Corresponding author:

#### Dong-Kun Yang

Viral Disease Division, Animal and Plant Quarantine Agency, Ministry of Agriculture, Food and Rural Affairs, 177 Hyeoksin 8-ro, Gimcheon 39660, Korea  
Tel: +82-54-912-0785  
E-mail: yangdk@korea.kr  
<https://orcid.org/0000-0001-5765-3043>

#### Conflict of interest:

The authors declare no conflict of interest.

**Received:** Aug 30, 2023

**Revised:** Oct 22, 2023

**Accepted:** Nov 6, 2023

# Evaluation of hemagglutination inhibition test for canine respiratory coronavirus antibodies and seroprevalence in Korean dogs

Lee-Sang Hyeon, Dong-Kun Yang\*, Yu-Ri Park, Hye Jeong Lee, Ha-Hyun Kim, Bang-Hun Hyun

Viral Disease Division, Animal and Plant Quarantine Agency, Ministry of Agriculture, Food and Rural Affairs, Gimcheon 39660, Korea

## Abstract

Canine respiratory coronavirus (CRCoV) is a significant pathogen that causes respiratory diseases in dogs, collectively known as a canine infectious respiratory disease. The virus is highly contagious and exhibits high seroprevalence worldwide. Currently, bovine coronavirus (BCoV) enzyme-linked immunosorbent assay (ELISA) kits are used to detect CRCoV antibodies. However, BCoV-ELISA kits cannot differentiate between infections caused by BCoV and those caused by CRCoV. In this study, we evaluated the hemagglutination inhibition (HI) test for CRCoV by comparing it with the virus neutralization (VN) test. Subsequently, we evaluated the seroprevalence of CRCoV in 383 dog serum samples collected from South Korea utilizing the HI test. The HI test for CRCoV showed a strong correlation with the VN test ( $R = 0.83$ ,  $p < 0.001$ ). The analysis of seroprevalence revealed that 52.2% (95% confidence interval [CI], 47.2%–57.1%) of the Korean dog serum samples were positive. The seroprevalence exhibited varied with age, with a positivity rate of 43.9% in dogs under 1 year of age and 66.7% in dogs aged 3 to 5 years (odds ratio, 2.54; 95% CI, 1.43–4.59). In conclusion, the HI test to monitor CRCoV antibody proved to be closely related to the VN test. Furthermore, over half of the dogs in Korea tested positive for CRCoV antibodies. These findings contribute to a better understanding of the sero-epidemiology of CRCoV.

**Keywords:** canine coronavirus; hemagglutination inhibition test; neutralization test; Republic of Korea

## Introduction

Canine respiratory coronavirus (CRCoV) was first discovered in 2003 in the United Kingdom, specifically in dogs with canine infectious respiratory disease (CIRD), commonly known as kennel cough [1]. This highly infectious disease primarily affects dogs in densely populated environments such as shelters and veterinary clinics. It typically manifests as a mild condition characterized by a dry, hacking cough. However, in some cases, it can progress to severe bronchopneumonia, potentially leading to fatal outcomes [2]. The pathogenesis of CRCoV is associated with single or multiple infections involving numerous viral and bacterial pathogens such as canine parainfluenza virus, canine adenovirus 2, canine herpes virus, and *Bordetella bronchiseptica* [3–6]. CRCoV is believed to play a role in the early stages of CIRD by impeding clearance in the upper airways, rendering dogs more

susceptible to secondary infections [7]. Because CRCoV is widespread across North America, Europe, and Asia, the seroprevalence has been determined in various countries, including the United States, Canada, South Korea, New Zealand, and Japan [8–11]. Among these countries, Canada and the United States reported high seroprevalence rates, with 59.1% and 54.7% of tested sera yielding positive results, respectively [8]. In contrast, South Korea recorded a CRCoV seroprevalence rate of 12.8% in 2010 [9]. Several serological tests, including virus neutralization (VN), indirect fluorescent antibody (IFA), and enzyme-linked immunosorbent assay (ELISA), have been developed to detect CRCoV infections [12]. Among these, ELISA utilizing the bovine coronavirus (BCoV) antigen has been widely utilized for CRCoV serological testing [8,10]. This approach is feasible because of the high amino acid sequence similarity (up to 96.0 %) between the spike proteins of CRCoV and BCoV [1]. In contrast, canine enteric coronavirus (CECoV) exhibits only 21% amino acid sequence identity with the spike protein, indicating low cross-reactivity. Additionally, the CECoV vaccine does not confer protection against CRCoV infection [12]. ELISA utilizing the CRCoV antigen has demonstrated slightly higher sensitivity and specificity than BCoV-ELISA, and both ELISA tests have shown an overall high agreement in results [8]. Despite the marked similarity in spike proteins, the hemagglutination inhibition (HI) test based on the BCoV antigen has shown poor sensitivity and specificity compared to BCoV-ELISA [13]. VN and IFA are accurate and useful for antibody detection; however, they are time-consuming and costly. The HI test is preferred because it does not require cell culture and is more economical than the ELISA. Currently, there are no reports of HI tests for CRCoV infection. Therefore, HI tests are required for the serological monitoring of CRCoV.

In this study, we aimed to evaluate the suitability of the CRCoV antigen-based HI test for the measurement of CRCoV antibodies and compare it with the VN test. This test was used to investigate the seroprevalence of CRCoV in the sera of 383 dogs in South Korea. Furthermore, we analyzed any possible associations between CRCoV seroprevalence and factors such as age, sex, and sample collection year.

## Materials and Methods

### Sample collection and virus

In total, 383 blood samples were collected from dogs residing in Gyeonggi and Seoul provinces of South Korea between 2019 and 2022. Dogs were randomly selected to ensure a diverse rep-

resentation of the dog population. The dog's health status at the time of blood collection showed no clinical problems with its respiratory system. None of the dogs were inoculated with the CRCoV vaccine. This vaccine has not yet been commercialized in South Korea. Approximately 3 to 5 mL of blood was collected from each dog and transferred to sterile plain vacutainer tubes. Blood samples were allowed to clot at room temperature for 30 min, followed by centrifugation at 3,000 rpm for 10 minutes to separate the serum. The collected serum was then aliquoted into labeled cryovials and stored at  $-20^{\circ}\text{C}$  until further analysis. The BCoV QIABC0516 (KVCC-VR1500040) and CRCoV SNU\_V22-9 (KVCC-VR2300007) were obtained from the Animal and Plant Quarantine Agency (Gimcheon, Korea).

### Virus identification

For the CRCoV identification, the virus was cultivated using HRT-18 cells (ATCC CCL-244, USA) in Dulbecco's modified eagle medium (DMEM) supplemented with penicillin (100 U/mL), streptomycin (100  $\mu\text{g}/\text{mL}$ ), and trypsin (0.25  $\mu\text{g}/\text{mL}$ ) at  $37^{\circ}\text{C}$  and 5%  $\text{CO}_2$  until cytopathic effects (CPE) were observed. The cell culture-grown viruses were subjected to 3 cycles of freezing and thawing. Viral RNA was extracted from the supernatant using an RNA extraction kit (QIAGEN, USA), following the manufacturer's instructions. The extracted RNA was subjected to reverse transcription polymerase chain reaction (RT-PCR) using the primer set CRCoV-SF (5'-GCAATGCTG-GTTTCGGAAGAG-3') and CRCoV-SR (5'-GTTGG-CATAGGTGAGCACTG-3') to amplify the CRCoV spike protein [14]. Amplified products were electrophoresed on a 1.5% agarose gel.

### Hemagglutination assay

Erythrocytes from mice, geese, chickens, and guinea pigs were collected from the control group of completed clinical study, and pig erythrocytes were obtained from a slaughterhouse. Erythrocytes were washed with phosphate-buffered saline (PBS, pH 7.2) and prepared at a concentration of 0.7% in PBS. The CRCoV supernatant (50  $\mu\text{L}$ ,  $10^6$  TCID<sub>50</sub>/mL) was diluted two-fold in U-96-well plates containing PBS. Subsequently, 50  $\mu\text{L}$  of washed erythrocytes were added to each well, and the plates were incubated at  $4^{\circ}\text{C}$  for 1 hour. The hemagglutination assay (HA) titer was determined by identifying the highest dilution of CRCoV that exhibited hemagglutination. To determine the optimal buffer for HA analysis, we evaluated various Sorenson buffers with pH values ranging from 6.2 to 7.2 using the same experimental procedure.

### Hemagglutination inhibition test

The HI test for CRCoV was performed as a modified version of the BCoV HI test [15]. Briefly, the dog serum samples, each of 100  $\mu$ L, were diluted in 500  $\mu$ L of PBS and mixed with 400  $\mu$ L of 25% kaolin. After shaking for 1 hour, kaolin was removed by centrifugation at 12,000 rpm for 5 minutes in a microcentrifuge. The resulting clear supernatant was mixed with 50  $\mu$ L of packed normal mouse erythrocytes. Following a 1 hour incubation at 37°C, the treated serum was separated from the mouse erythrocytes through centrifugation. For the HI test of BCoV or CRCoV, 4 HA units of BCoV or CRCoV (25  $\mu$ L) were added to 25  $\mu$ L of the treated sera in U-96-well plates. After incubation for 1 hour at 37°C, 50  $\mu$ L of 0.7% mouse erythrocytes were added. The plates were then incubated at 4°C for 2 hours. The HI titer was determined as the highest serum dilution that completely inhibited hemagglutination.

### Virus neutralization test

The VN test was used to assess the neutralizing activity of antibodies against CRCoV in the serum samples. Forty serum samples were assessed using the VN test to determine their ability to neutralize CRCoV. Briefly, HRT-18 cells were grown to confluency at 37°C with 5% CO<sub>2</sub> in a 96-well plate. Serum samples were serially diluted 2-fold in DMEM without fetal bovine serum and mixed with an equal volume of CRCoV (200 TCID<sub>50</sub>/well). The mixture was incubated at 37°C with 5% CO<sub>2</sub> for 1 hour. Following incubation, the mixture was added to the 96-well plate containing HRT-18 cells, along with trypsin (0.25  $\mu$ g/ mL). The presence or absence of CPE induced by the viral infection was observed, and the highest serum dilution that completely prevented CPE was recorded as the VN titer.

### Statistical analysis

All statistical analyses were conducted using R statistical software ver. 4.3 (www.cran.org), except for the determination of the 95% confidence interval (CI) of prevalence. The CI for prevalence was calculated using an online program (<https://epitools.ausvet.com.au/ciproportion>) and the Wilson scoring method. Spearman correlation analysis was performed on log<sub>2</sub>-transformed data for the HI and VN tests. The receiver operating characteristic (ROC) curve was used to identify the optimal cutoff for the HI test of CRCoV in relation to VN as the gold standard. Chi-square test was used to evaluate differences in seroprevalence based on sex, age, and year of sample collection. Statistical significance was set at  $p < 0.05$ . Logistic regression was used to calculate the odds ratios (ORs) for the multivariate risk factors.

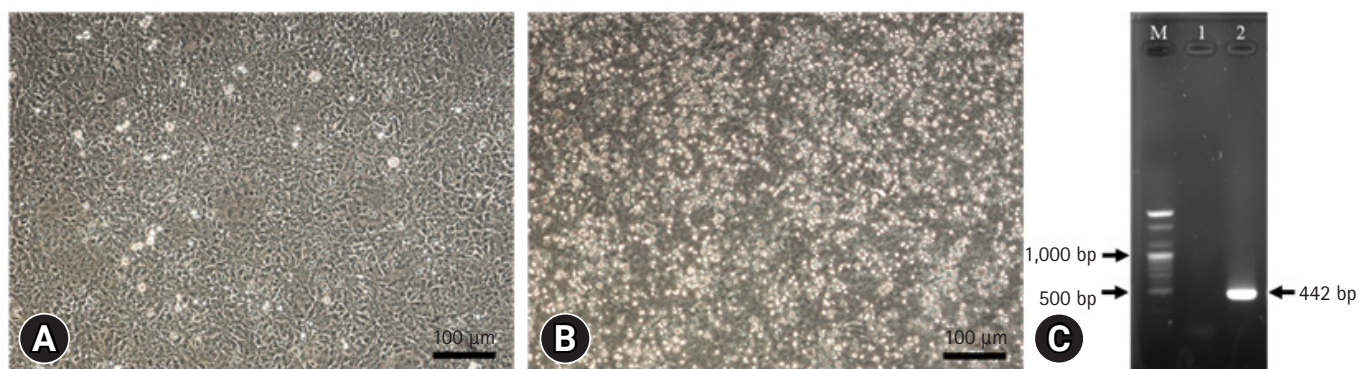
## Results

### Establishment of HI test for CRCoV

CPEs were observed in HRT-18 cells 3 days after CRCoV infection (Fig. 1A and B). CRCoV was also identified by RT-PCR, which amplified the expected size of a spike protein fragment of 442 bp (Fig. 1C). Among the 5 kinds of erythrocytes tested at 4°C, CRCoV exhibited the highest HA activity with mouse erythrocytes, exhibiting 64 HA units (Table 1). No differences were observed between the pH values of the various diluents, and the presence or absence of bovine serum albumin showed no differences. The HI test conditions were determined using mouse erythrocytes and PBS.

### Comparison between VN and HI tests

The VN test was performed using 40 dog serum samples



**Fig. 1.** A normal HRT-18 cell (A) and cytopathic effect in HRT-18 cells 3 days after infection of canine respiratory coronavirus (CRCoV), SNU\_V22-9 strain (B). Identification of CRCoV using reverse transcription polymerase chain reaction amplification (C). M, 100 bp plus ladder; lane 1, negative control; lane 2, SNU\_V22-9 strain (442 bp). Scale bars: (A) 100  $\mu$ m and (B) 100  $\mu$ m.

from CRCoV-infected HRT-18 cells to validate and compare HI results using either BCoV or CRCoV antigens. The VN test, considered the “gold standard,” was used to calculate the correlation and sensitivity/specificity/accuracy of HI assays with BCoV and CRCoV antigens. The HI test using the CRCoV antigen showed a strong correlation with VN ( $R = 0.83$ ), whereas a weaker correlation was observed when the BCoV antigen was

used ( $R = 0.40$ ) (Fig. 2). The optimal cutoff values of the CRCoV antigen for the HI test were estimated using ROC curves. ROC curve analysis was performed to determine the optimal cutoff titer (1:5.7 dilution (Fig. 3). At the optimal cutoff values, the sensitivity and specificity of the HI test were 94.7% and 81.0%, respectively. For practical convenience with two-fold dilutions, a 1:4 dilution, which closely approximated the 1:5.7 dilution, was selected as the final cutoff. At this cutoff, the clinical sensitivity, specificity, and accuracy of the HI test were 90.5%, 78.9%, and 85.0%, respectively (Table 2).

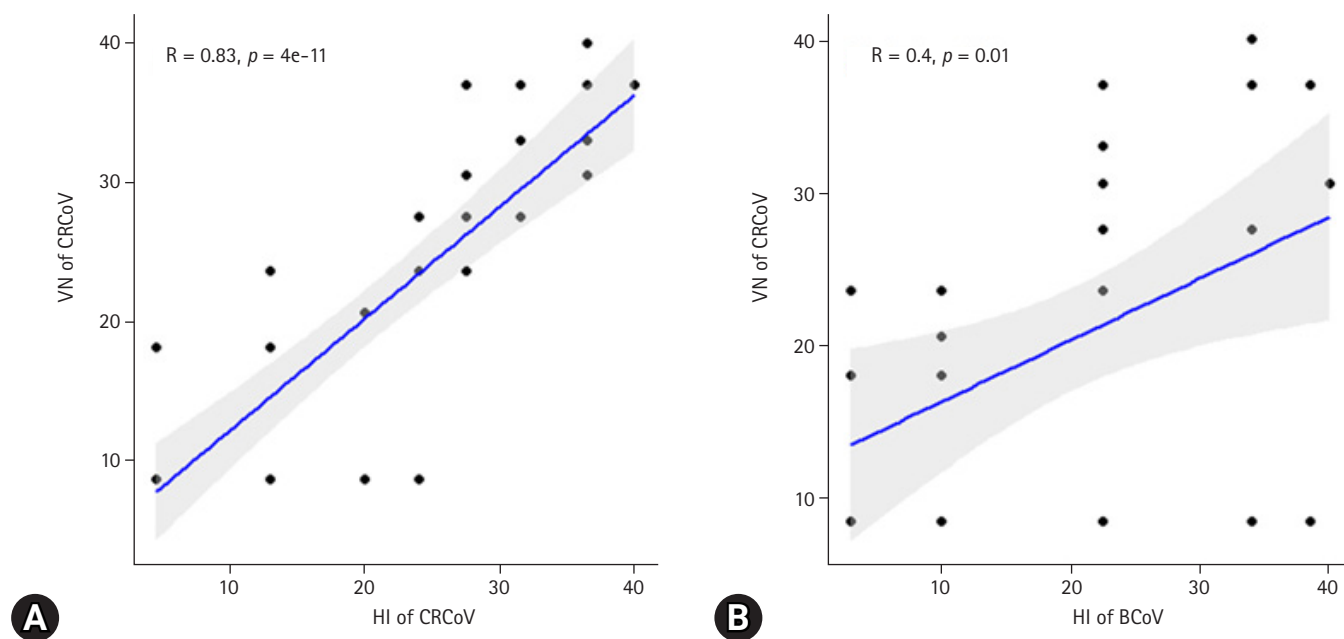
**Table 1.** Hemagglutination activity of CRCoV using erythrocytes from several animal species and various dilutions

Animal species	HA titer	Conditions
Mouse	64	
Goose	16	4°C
Pig	8	0.7% Erythrocytes in PBS (pH 7.4)
Guinea pig	4	
Chicken	4	
Buffer condition (pH)		
PBS (7.4)	64	
PBS + 0.177% BSA	64	
SB (6.2)	64	
SB (6.4)	64	4°C
SB (6.6)	64	0.7% Mouse erythrocytes
SB (6.8)	64	
SB (7.0)	64	
SB (7.2)	64	

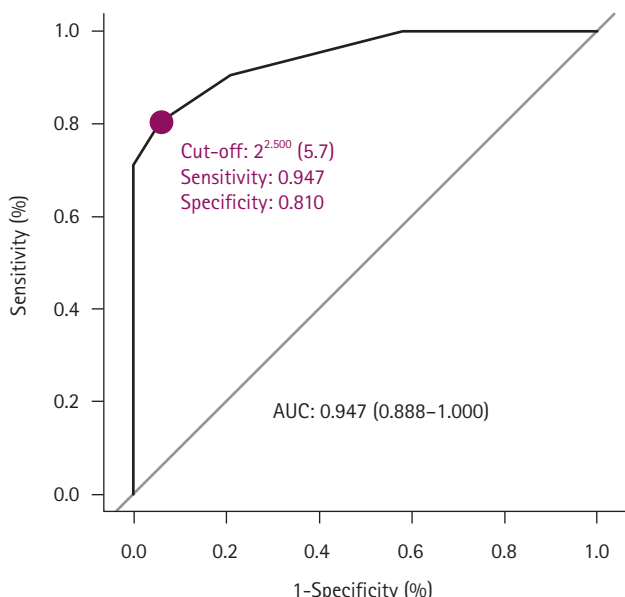
CRCoV, canine respiratory coronavirus; HA, hemagglutination assay; PBS, phosphate-buffered saline; BSA, bovine serum albumin; SB, Sorenson buffer.

**Seroprevalence of CRCoV**

Between 2019 and 2022, 383 samples were analyzed, with 98, 96, 93, and 96 samples collected in each respective year. The median age of the dogs was 2.1 years, ranging from 12 weeks to 17 years, and 205 of the 383 dogs (53.5%) were male. The overall seropositive rate in South Korea was 200 out of 383 (52.2%; 95% CI, 47.2%–57.1%). The largest proportion of seropositive samples had an HI titer of 1:40 (24.8%), and the number of seropositive samples decreased as the HI titer increased (Fig. 4). The annual seropositive rates were as follows: 59.4% (95% CI, 49.37%–68.65%) in 2022, 53.8% (95% CI, 43.68%–63.55%) in 2021, 30.2% (95% CI, 21.93%–40.01%) in 2020, and 65.3% (95% CI, 55.4%–73.99%) in 2019 (Table 3). The seropositivity for CRCoV in dogs under 1 year of age (43.9%) was similar to dogs



**Fig. 2.** Correlations of hemagglutination inhibition (HI) and virus neutralization (VN) for canine respiratory coronavirus (CRCoV) (A) and bovine coronavirus (BCoV) (B) antigen. The blue lines indicate the correlation between HI and VN titers. The gray-colored area indicates the 95% confidence interval region.



**Fig. 3.** The receiver operating characteristic curves of hemagglutination inhibition and virus neutralization titers for canine respiratory coronavirus. AUC, area under the receiver operating characteristic curve.

classified as 1 to 2 years old (46.7%) (OR, 1.12; 95% CI, 0.66–1.91). Dogs aged 3 to 5 years exhibited a significantly higher positivity rate (66.7%) than dogs aged less than 1 year (OR, 2.54; 95% CI, 1.43–4.59). Male and female dogs had similar seropositivity rates of 52.7% and 51.7%, respectively ( $p = 0.93$ ).

### Discussion

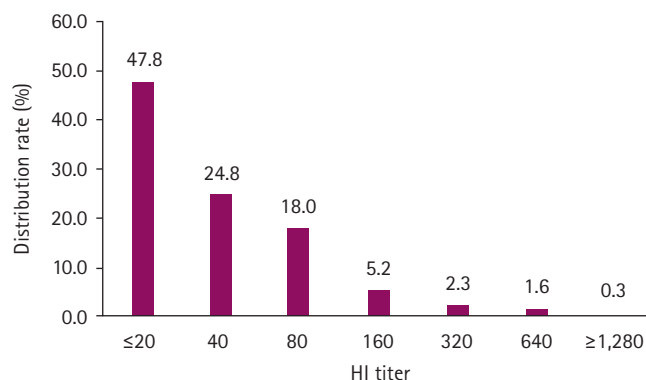
Serological tests against pathogens such as canine parvovirus and Newcastle disease virus have been conducted using the HI test [16,17]. The HI test is cost-effective and can be performed in most laboratories, making it a practical tool for measuring antibodies against pathogens. Our findings show that the HI test for CRCoV exhibits a strong correlation ( $R = 0.83, p < 0.001$ ) with the VN test and an area under the curve of 0.947 in the ROC analysis. The sensitivity and specificity of the BCoV-based HI test using dog sera, when compared to BCoV-ELISA, were 23.8% and 85.1%, respectively [13]. In our study, the BCoV antigen-based HI test exhibited a weaker correlation than the VN test ( $R = 0.4$ ). This result indicates that the HI test for detecting CRCoV antibodies demonstrated low cross-reactivity with BCoV antigens. Considering the possibility of BCoV infections in dogs and the reports of increased levels of BCoV-neutralizing antibodies in dogs infected with BCoV [18], the CRCoV antigen-based HI test provides a precise and

**Table 2.** The sensitivity, specificity, and accuracy of the HI test against canine respiratory coronavirus

Serologic test	No. of samples with VN		
	Positive	Negative	Sum
No. of samples with HI test for CRCoV			
Positive	19	4	23
Negative	2	15	17
Sum	21	19	40
Sensitivity (%)	90.5		
Specificity (%)	78.9		
Accuracy (%)	85.0		

HI, hemagglutination inhibition; VN, virus neutralization; CRCoV, canine respiratory coronavirus.

Sensitivity (%) = [(number of positives in both tests) / (number of positives in VN test)] × 100; Specificity (%) = [(number of negatives in both tests) / (number of negatives in the VN test)] × 100; Accuracy (%) = [(number of positives in both tests + number of negatives in both tests) / (total number of samples)] × 100.



**Fig. 4.** Distribution rate of hemagglutination inhibition (HI) titers against canine respiratory coronavirus (CRCoV) in 383 dogs. Based on the receiver operating characteristic curve analysis, an HI titer of up to 1:40 was considered seropositive against CRCoV.

cost-effective means of monitoring CRCoV infections in dog populations.

CRCoV is widely distributed across North America, Europe, and Asia, with reported seroprevalence rates of 59.1%, 54.7%, 36%, and 17.8% in Canada, the United States, the United Kingdom, and Japan, respectively [8,19]. Additionally, studies conducted in the United States and the United Kingdom have revealed regional variations in CRCoV seroprevalence, with higher rates observed in densely populated urban areas [8]. In the present study, we confirmed an increase in CRCoV circulation and exposure in dogs in Korea. Overall, 52.2% of dog serum samples tested positive for CRCoV antibodies, signifying a substantial increase when compared to the reported seropositivity rate of 12.8% in South Korea in 2010 [9]. The increased exposure to CRCoV in South Korea may be attributed to dog-to-dog

**Table 3.** Seropositive rates of CRCoV using hemagglutination inhibition collected from dogs residing in Gyeonggi and Seoul provinces of South Korea from 2019 to 2022

Variable	Positive/total (%)	OR (95% CI)	p-value*
Sample collection year			< 0.001
2022	57/96 (59.4)	1.00 (ref.)	
2021	50/93 (53.8)	0.79 (0.44–1.42)	
2020	29/96 (30.2)	0.29 (0.16–6.15)	
2019	64/98 (65.3)	1.28 (0.71–2.31)	
Age (y)			0.007
≤ 1	50/114 (43.9)	1.00 (ref.)	
1–2	50/107 (46.7)	1.12 (0.66–1.91)	
3–5	58/87 (66.7)	2.54 (1.43–4.59)	
≥ 6	42/75 (56.0)	1.62 (0.90–2.94)	
Sex			0.93
Male	108/205 (52.7)	1.00 (ref.)	
Female	92/178 (51.7)	0.96 (0.64–1.43)	
Total	200/383 (52.2)		

CRCoV, canine respiratory coronavirus; OR, odds ratio; CI, confidence interval; ref., reference.

\*Chi-square test p-value for differences between the groups.

contact at dog shelters and veterinary clinics. For a more comprehensive understanding, future research should expand their investigation to encompass additional regions of South Korea.

CRCoV seroprevalence varies with age. Age-related seropositivity in dogs may be attributed to an increased likelihood of continuous viral exposure as the dogs age. Conversely, dogs over 6 years of age show moderate seroprevalence, which could be due to factors such as reduced activity levels and a potential decline in immune response efficiency [20]. Similar age-related patterns were observed in studies conducted in other countries [8]. In the United States and the United Kingdom, age influences the seroprevalence of CRCoV antibodies, with dogs under 1 year of age having a higher likelihood of being seronegative for CRCoV than older dogs ( $p < 0.001$ ) [8]. In Italy, the percentage of dogs with CRCoV antibodies increases with age, reaching a peak seroprevalence of 40.0% (12/30) in 9-year-old dogs and subsequently declining [20]. In this study, the lowest seroprevalence of CRCoV was observed in dogs under 1 year of age, similar to findings in the United States and the United Kingdom. Conversely, the highest seroprevalence was identified in dogs between 3 and 5 years of age, akin to the pattern observed in Italy, and decreased among older dogs. This indicates that the seroprevalence of CRCoV in dogs in Korea varies with age.

In conclusion, the HI test has exhibited high specificity with the VN test of CRCoV. Among the study population, 52.2% of dogs in Korea were seropositive, which is comparable to rates reported in the United States. These findings imply that dogs in Korea are continuously exposed to CRCoV. In the future, the development of CRCoV-specific ELISA and vaccines will be es-

sential to prevent CRCoV infections. This information will contribute to a better understanding of the epidemiology and distribution of CRCoV and may prove invaluable for the effective prevention of CRCoV.

## Acknowledgments

The authors are grateful to Dr. Dea-Sub Song of Seoul National University for depositing canine respiratory coronavirus SNU\_V22-9 strain to Korea veterinary culture collection.

This work was supported financially by a grant (N-AD20-2010-19-01) from the Animal, and Plant Quarantine Agency, Ministry of Agriculture, Food and Rural Affairs, Republic of Korea.

## ORCID

Lee-Sang Hyeon, <https://orcid.org/0000-0002-7608-156X>

Dong-Kun Yang, <https://orcid.org/0000-0001-5765-3043>

Yu-Ri Park, <https://orcid.org/0000-0002-2829-4368>

Hye Jeong Lee, <https://orcid.org/0000-0003-2044-6176>

Ha-Hyun Kim, <https://orcid.org/0000-0001-6473-0035>

Bang-Hun Hyun, <https://orcid.org/0000-0002-3429-3425>

## References

1. Erles K, Toomey C, Brooks HW, Brownlie J. Detection of a group 2 coronavirus in dogs with canine infectious respiratory disease. *Virology* 2003;310:216–223.

2. Buonavoglia C, Martella V. Canine respiratory viruses. *Vet Res* 2007;38:355–373.
3. Appel MJ, Percy DH. SV-5-like parainfluenza virus in dogs. *J Am Vet Med Assoc* 1970;156:1778–1781.
4. Ditchfield J, Macpherson LW, Zbitnew A. Association of canine adenovirus (Toronto A 26/61) with an outbreak of laryngotracheitis (“kennel cough”): a preliminary report. *Can Vet J* 1962;3:238–247.
5. Chalker VJ, Toomey C, Opperman S, Brooks HW, Ibuoye MA, Brownlie J, Rycroft AN. Respiratory disease in kennelled dogs: serological responses to *Bordetella bronchiseptica* lipopolysaccharide do not correlate with bacterial isolation or clinical respiratory symptoms. *Clin Diagn Lab Immunol* 2003;10:352–356.
6. Karpas A, Garcia FG, Calvo F, Cross RE. Experimental production of canine tracheobronchitis (kennel cough) with canine herpesvirus isolated from naturally infected dogs. *Am J Vet Res* 1968;29:1251–1257.
7. Mitchell JA, Brooks HW, Szladovits B, Erles K, Gibbons R, Shields S, Brownlie J. Tropism and pathological findings associated with canine respiratory coronavirus (CRCoV). *Vet Microbiol* 2013;162:582–594.
8. Priestnall SL, Brownlie J, Dubovi EJ, Erles K. Serological prevalence of canine respiratory coronavirus. *Vet Microbiol* 2006;115:43–53.
9. An DJ, Jeoung HY, Jeong W, Chae S, Song DS, Oh JS, Park BK. A serological survey of canine respiratory coronavirus and canine influenza virus in Korean dogs. *J Vet Med Sci* 2010;72:1217–1219.
10. More GD, Dunowska M, Acke E, Cave NJ. A serological survey of canine respiratory coronavirus in New Zealand. *N Z Vet J* 2020;68:54–59.
11. Yachi A, Mochizuki M. Survey of dogs in Japan for group 2 canine coronavirus infection. *J Clin Microbiol* 2006;44: 2615–2618.
12. Erles K, Brownlie J. Canine respiratory coronavirus: an emerging pathogen in the canine infectious respiratory disease complex. *Vet Clin North Am Small Anim Pract* 2008; 38:815–825.
13. Decaro N, Desario C, Elia G, Mari V, Lucente MS, Cordioli P, Colaianni ML, Martella V, Buonavoglia C. Serological and molecular evidence that canine respiratory coronavirus is circulating in Italy. *Vet Microbiol* 2007;121:225–230.
14. Hong S, Lee HY, Kim O. Detection of canine respiratory coronavirus from dogs with respiratory disease. *J Biomed Res* 2015;16:19–22.
15. Sato K, Inaba Y, Matumoto M. Serological relation between calf diarrhea coronavirus and hemagglutinating encephalomyelitis virus. *Arch Virol* 1980;66:157–159.
16. Yang DK, Yoon SS, Byun JW, Lee KW, Oh YI, Song JY. Serological Survey for Canine Parvovirus Type 2a (CPV-2a) in the Stray Dogs in South Korea. *J Bacteriol Virol* 2010;40:77–81.
17. Mao Q, Ma S, Schrickel PL, Zhao P, Wang J, Zhang Y, Li S, Wang C. Review detection of Newcastle disease virus. *Front Vet Sci* 2022;9:936251.
18. Kaneshima T, Hohdatsu T, Hagino R, Hosoya S, Nojiri Y, Murata M, Takano T, Tanabe M, Tsunemitsu H, Koyama H. The infectivity and pathogenicity of a group 2 bovine coronavirus in pups. *J Vet Med Sci* 2007;69:301–303.
19. Kaneshima T, Hohdatsu T, Satoh K, Takano T, Motokawa K, Koyama H. The prevalence of a group 2 coronavirus in dogs in Japan. *J Vet Med Sci* 2006;68:21–25.
20. Priestnall SL, Pratelli A, Brownlie J, Erles K. Serological prevalence of canine respiratory coronavirus in southern Italy and epidemiological relationship with canine enteric coronavirus. *J Vet Diagn Invest* 2007;19:176–180.