



ARTICLE

## The Effect of Hot-Air Dried *Lentinula edodes* on the Quality and Organoleptic Properties of Rolled-Dumplings

Ha-Yoon Go, Sol-Hee Lee, and Hack-Youn Kim\*

Department of Animal Resources Science, Kongju National University, Yesan 32439, Korea

OPEN ACCESS

Received March 28, 2022

Revised April 29, 2022

Accepted May 9, 2022

\*Corresponding author : Hack-Youn Kim  
Department of Animal Resources Science,  
Kongju National University, Yesan 32439,  
Korea  
Tel: +82-41-330-1241  
Fax: +82-41-330-1249  
E-mail: kimhy@kongju.ac.kr

\*ORCID  
Ha-Yoon Go  
<https://orcid.org/0000-0002-0570-1995>  
Sol-Hee Lee  
<https://orcid.org/0000-0003-1124-7095>  
Hack-Youn Kim  
<https://orcid.org/0000-0001-5303-4595>

**Abstract** The effect of hot-air dried *Lentinula edodes* pileus (DLE) on the quality and organoleptic properties of rolled-dumplings was evaluated. DLE was prepared by drying at 60°C for 24 h and added (Non, 7%, and 9%) to rolled-dumplings. The proximate composition, pH, color (CIE L\*, a\*, b\*), and cooking yield were analyzed. Texture profile analysis, electronic-nose (e-nose), electronic-tongue (e-tongue), and organoleptic evaluation were also conducted. The cooking yield of dumplings with 9% DLE was significantly lower than that of the congeners without DLE, whereas 7% DLE did not lead to significant differences compared without DLE. With increasing DLE addition, the pH and lightness of the dumplings decreased significantly, whereas the redness tended to increase. The texture profile was significantly higher for the dumplings with DLE compared to those without DLE. E-nose analysis confirmed that DLE addition led to the positive odors (methanethiol: meaty, sulfurous; 3-methylbutanal: malty, toasted) and the negative odors (trimethylamine: ammoniacal; acetic acid: acidic, sour). E-tongue analysis showed that DLE addition decreased the intensity of the sourness and increased the intensity of the saltiness and umami of rolled-dumplings. DLE addition improved the overall organoleptic properties, but 9% DLE can be recognized as a foreign substance in organoleptic acceptance. Consequently, DLE has the potential to serve as a flavor and odor enhancer for rolled-dumplings, and the addition of DLE can positively improve consumer acceptance by improving the quality and organoleptic properties.

**Keywords** hot-air drying, *Lentinula edodes*, rolled-dumplings, quality properties, organoleptic properties

### Introduction

A home meal replacement (HMR) is a complete or semi-cooked product sold for immediate or simple cooking. The market for HMRs has continued to grow due to an increase in the proportion of single-person households and improvements in the variety, convenience, and taste of HMR products (Kim et al., 2017; Lee, 2017). HMRs are generally classified as ready to eat, ready to heat, ready to cook, and ready to prepare according to the cooking method (Bae et al., 2021). The proportion of livestock food,

the main ingredient in HMR, was 61% in 2020 in Korea, which increased by 7% compared to the previous year. Therefore, the release of various products, including processed meat products such as soup, stew, Jjigae, hot pot, cup rice, and frozen side dishes, is in demand (aTFIS, 2020).

Dumplings are products made by filling and molding dumpling skins made of wheat flour or buckwheat flour dough with dumpling stuffing containing meat, fat, vegetables, and other additives (Zhang et al., 2011). The types of dumplings in various recipes are tailored to a specific lifestyle by changing the ingredients. There are various dumplings such as pheasant dumplings filled with pheasant meat, mullet dumplings containing sliced mullet, and rolled-dumplings made by rolling the dumpling stuffing in flour without the dumpling skin (Kim and Ahn, 2019). Recently, dumplings with various ingredients have been released according to consumer preference, such as hotteok (Korean pancake) dumplings with tomato sauce, cream cheese, red bean, and seeds, and X.O. rolled-dumplings with Dongpo pork, shrimp, red crab meat, and mala (Chinese spice) sauce (aTFIS, 2019). These dumplings can be manufactured according to the variety of ingredients and are suitable for producing products that meet the needs of consumers.

*Letinula edodes* (*L. edodes*) is an edible mushroom that belongs to the genus *Lentinula*, family Omphalotaceae, order Agaricales, class Agaricomycetes. *L. edodes* contains nucleic acid-based seasoning ingredients such as guanylic acid and adenylic acid, which confer a unique flavor, and is used in Eastern and Western cuisines where it is consumed in various ways (Kim et al., 2012; Morales et al., 2020; Yun et al., 2020). *L. edodes* contains lentinan, a water-soluble polysaccharide, eritadenine, ergosterol, phenol, and various physiologically active substances, which lower blood pressure and blood cholesterol levels and exert antiviral and anticancer activity, and improve immunity (Liu et al., 2020; Xu et al., 2019). In addition, it is an excellent source of protein and dietary fiber and has a texture characteristic similar to that of meat, so that when applied to meat products, it does not significantly affect the existing formulation (Cerón-Guevara et al., 2020; Wang et al., 2019). In the process of drying *L. edodes*, vitamin D is activated, and the umami taste is improved due to the increased content of 5'-guanosine monophosphate, thereby improving the nutritional and organoleptic properties (Kong et al., 2019; Qin et al., 2020). In addition, the concentration of antioxidant compounds such as polyphenols liberated by the destruction of the cell wall during the hot-air drying (HAD) process also increases, and the antioxidant activity increases due to the Maillard reaction (Choi et al., 2006; Manzocco et al., 2000).

The electronic-nose (e-nose) and electronic-tongue (e-tongue) are gas and liquid sensor array systems that mimic the human senses of smell and taste, and are used to analyze volatile compounds and taste-related compounds (Buratti et al., 2018). When analyzing food quality, the organoleptic properties and processing parameters related to quality can be analyzed relatively inexpensively and quickly using the e-nose and e-tongue compared to gas chromatography–mass spectrometry, laser scattering analyzer, or high-performance liquid chromatography (Tan and Xu, 2020). Although the e-nose and e-tongue are limited for quantitative analysis, microscopic differences in the taste and smell of food caused by various factors can be specified and distinguished (Weng et al., 2021). Therefore, the e-nose and e-tongue are used in the field of analysis of various foods such as smoked and fermented meat products because it is possible to objectively analyze flavor and taste instead of direct organoleptic evaluation of food (Chen et al., 2021b; Zhang et al., 2021a; Zhang et al., 2021b).

*L. edodes* exhibits unique organoleptic properties due to the various physiologically active substances, and is thus able to improve the quality of meat products. However, *L. edodes* has been used in dumplings in only a few cases. Therefore, this study intends to analyze the effect of hot-air dried (HAD process) *L. edodes* pileus (DLE) on the quality and organoleptic characteristics of rolled-dumplings.

## Materials and Methods

### Preparation of rolled-dumplings

#### Preparation of materials

Pork hind legs were purchased from Hongjumeat (Hongseong, Korea) 24 h after slaughter and prepared by grinding with a grinder (PA-32, Mainca, Barcelona, Spain) equipped with a 3 mm plate. The ingredients for the rolled-dumplings were purchased from Hanaro Mart in Yesan, Chungnam, and salt was purchased from Hanju Salt (Ulsan, Korea). *L. edodes* was divided into the pileus and stem and dried at 60°C for 24 h in a drying oven (C-F03, Vision Scientific, Daejeon, Korea), after which the pileus was chopped into cubes (1 cm) to prepare DLE. Mushroom oil was prepared by frying the dried *L. edodes* stems with cooking oil at a ratio of 1:20, then filtering the oil with filter paper (Whatman No. 1, GE Healthcare, Chicago, IL, USA). As auxiliary ingredients, chestnuts were steam-cooked at 120°C for 20 min in a chamber (10.10ESI/SK, Alto Shaam, Menomonee Falls, WI, USA) and then pulverized with a hand blender (HR2652, Philips, Amsterdam, Netherlands). Tofu was mashed and dehydrated, and leek, cabbage, green onion, onion, and garlic were finely chopped.

#### Preparation of hot-air dried *Lentinula edodes* pileus (DLE) rolled-dumplings

Pork hind legs (50%), tofu (36%), garlic chives (7%), and cabbage (7%) were used as the main ingredients for filling the dumplings. Compared to the total weight, as auxiliary ingredients, 7% chestnut, 5% honey, 3% mushroom oil, 1% salt, 1.4% leek, onion and garlic, 0.2% isolated soy protein, 1% monosodium glutamate (MSG), and DLE (Non, 7%, and 9%) were added. After hand mixing for 2 min, the mixture was covered with plastic wrap and aged in an aging-refrigerator (DA-45, The Alesso, Seoul, Korea) at 4°C for 30 min. The prepared dumpling stuffing was weighed to about 20 g and formed into a spherical shape. Thereafter, potato starch was thinly applied to the surface and heated in a chamber (10.10ESI/SK, Alto Shaam) at 120°C for 7 min. The prepared rolled-dumplings were left to cool at 10°C for 20 min and then stored at 4°C and used in the experiments within 24 h.

### Physicochemical and organoleptic analysis of rolled-dumplings

#### Proximate compositions

The proximate compositions of the rolled-dumplings were measured and calculated by converting the moisture content (AOAC-925.10), protein content (AOAC-960.52), fat content (AOAC-2003.05), and ash content (AOAC-923.03) according to AOAC (2005). The carbohydrate content was calculated by excluding the sum of the moisture, protein, fat, and ash contents from the total content (100%) based on proximate analysis (Alakali et al., 2010).

#### pH

The dumpling stuffing before cooking was homogenized at 6,451×g for 1 min using an Ultra-turrax (HMZ-20DN, Poonglim Tech, Seongnam, Korea) instrument by adding 4 g of sample and 16 mL of distilled water, and the pH of the rolled-dumplings after cooking was measured. The pH of the homogenized sample was measured using a glass electrode pH meter (Model S220, Mettler-Toledo, Schwarzenbach, Switzerland). The pH meter was calibrated using pH 4.01, pH 7.00, and pH 10.00 buffer solutions (Suntex Instruments, New Taipei City, Taiwan).

### **Color**

The CIE L\* (lightness), a\* (redness), and b\* (yellowness) color coordinates were measured using a colorimeter (CR-10, Minolta, Tokyo, Japan) with a wide angle of 8°. The surface of the dumpling stuffing was analyzed before heating and an inner cross-sectional cut was made based on the spherical point of the rolled-dumplings 10 min after cooking. The CIE data were acquired using a standard D<sub>65</sub> light source, and a white standard plate with CIE L\*+97.83, CIE a\*−0.43, and CIE b\*+1.98 was used for the standard color.

### **Cooking yield**

The cooking yield (%) of the rolled-dumplings was calculated after cooking at 120°C for 7 min in a steam chamber (10.10ESI/SK, Alto Shaam) and cooling for 20 min at 10°C. The weight was measured before and after cooking.

$$\text{Cooking yield (\%)} = \text{Weight after cooking (g)} / \text{Weight before cooking (g)} \times 100$$

### **Texture profile analysis (TPA)**

TPA force evaluation of the rolled-dumplings was performed using a texture analyzer (TA1, Lloyd, Largo, FL, USA) for a spherical sample of Ø 3.5 cm. The spherical sample was tested by fixing it to make it immobile when a machine force was applied. For the TPA, the hardness (kg), springiness, and cohesiveness were measured, and constant values for the gumminess (kg) and chewiness (kg) were calculated using these parameters.

### **E-nose**

The e-nose analysis was performed by using a flash gas chromatography e-nose (Hercules NEO, Alpha MOS, Toulouse, France). The rolled-dumpling sample (5 g) was placed in a 20 mL head-space vial, sealed with a lid, and stirred at 80°C for 20 min; 5 mL of volatile compounds was collected through an automatic sample collector. After setting the injection rate to 125 µL/s and the injection temperature to 200°C in the injected gas chromatography injection port, the injected volatile compounds were simultaneously analyzed at a trap absorption temperature of 80°C, trap desorption temperature of 250°C, and acquisition time of 110 s in two columns (MXT-5/MXT-1701, Restek, Bellefonte, PA, USA). An alkane C<sub>6</sub>–C<sub>16</sub> standard solution was used to identify the components based on Kovat's index.

### **E-tongue**

The e-tongue analysis was performed using a taste sensor e-tongue (Astree V, Alpha MOS). A sample of rolled-dumplings (8 g) was homogenized for 1 min at 6,451×g using 32 mL of distilled water and a homogenizer (AM-5, Nissei, Tokyo, Japan). The homogenized sample was filtered with filter paper (Whatman No. 1, GE Healthcare) and the supernatant was collected. The supernatant was diluted 1,000-fold in distilled water and measured using the taste sensor e-tongue. The analysis measured the signal intensity at each sensor using taste sensors: CTS (saltiness), NMS (umami), and AHS (sourness), along with auxiliary sensors SCS and CPS, and standard sensors PKS and ANS.

### **Organoleptic evaluation**

The organoleptic evaluation was conducted by selecting a panel of eight trained personnel who were familiar with and had sufficient knowledge of the terms and evaluation criteria for the samples in accordance with the Research Deliberation

(Authority No: KNU 2020-40) of the Kongju University Institutional Review Board (IRB). For the organoleptic evaluation, the heated dumplings with different amounts of DLE were evaluated on a scale of 1–10 for each of the six major sensory characteristics, and the average value was obtained and compared. In terms of color, flavor, texture, juiciness, and overall acceptability, 10 points indicated the best quality (10=extremely good or desirable), and 1 point indicated the worst quality (1=extremely bad or undesirable). In terms of off-flavor, 10 points indicated that the off-flavor was least perceived (10=not strongly perceived), and 1 point indicated that the off-flavor was strongly perceived (1=strongly perceived).

### Statistical analysis

All experiments were repeated at least three times; the experimental results were evaluated by one way analysis of variance (ANOVA) using the statistical processing program SAS (version 9.4 for Windows, SAS Institute, Cary, NC, USA). Thereafter, significant differences ( $p < 0.05$ ) between the groups were verified by the Duncan's multiple range test. The e-nose and e-tongue data were analyzed using Alphasoft 14.2 (Alpha MOS). The difference between the e-nose data for the samples was determined through principal component analysis (PCA) and from the mean bar graphs (peak area  $\times 10^3$ , data indicating 95% or more of the discrimination power), and the e-tongue data were interpreted using a radar chart and intensity scale bar chart.

## Results and Discussion

### Proximate composition and cooking yield

Table 1 shows the proximate composition of the rolled-dumplings with various DLE (moisture:  $14.62 \pm 0.22\%$ , protein:  $14.29 \pm 1.55\%$ , fat:  $0.49 \pm 0.11\%$ , ash:  $3.68 \pm 0.46\%$ , carbohydrate:  $66.97 \pm 2.15\%$ ) contents. The moisture content decreased significantly as the amount of added DLE increased ( $p < 0.05$ ). The dietary fiber content of DLE is known to be 23.23% (Gağlarirmak, 2011). Thus, when DLE was added, the behavior was similar to that in a previous study, where the moisture content decreased when dried shiitake mushrooms with a dietary fiber content of 18.31% were added to pork sausage (Stefanello et al., 2015; Tsai et al., 2008). It is also known that *L. edodes* loses its ability to prevent water loss due to disruption of the integrity of the cell membrane when exposed to temperatures of 60°C or higher (Qiu et al., 2021). Therefore, it is considered that the decrease in the moisture content of rolled-dumplings may be due to the destruction of the cell membrane by heating, and on the other hand, the moisture content may be affected by the relative increase in the carbohydrate content. On the other hand, the protein, fat, and ash contents of the rolled-dumplings were not significantly

**Table 1.** Proximate composition of rolled-dumplings with various levels of hot-air dried *Lentinula edodes* pileus (DLE)

Traits (%)	DLE (%)			SEM <sup>1)</sup>
	Non	7	9	
Moisture	64.26±0.25 <sup>a</sup>	59.50±0.23 <sup>b</sup>	58.34±1.03 <sup>c</sup>	1.107
Protein	14.98±0.49	14.05±1.34	13.11±1.03	0.427
Fat	5.28±0.85	5.30±1.28	5.72±1.35	0.348
Ash	1.99±0.13	2.32±0.18	2.43±0.28	0.107
Carbohydrate	13.02±1.44 <sup>b</sup>	16.85±0.60 <sup>a</sup>	19.10±0.45 <sup>a</sup>	1.162

All values are mean±SD.

<sup>1)</sup> n=9.

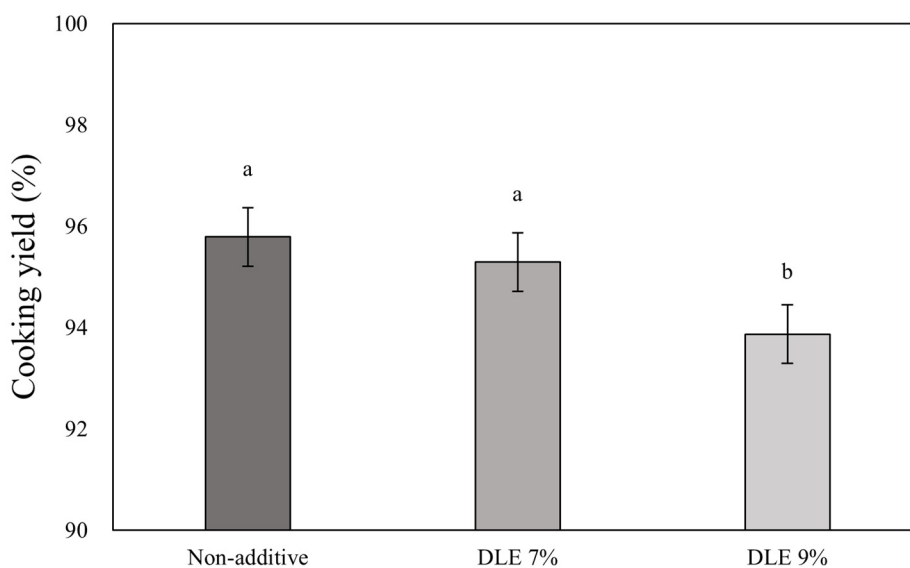
<sup>a-c</sup> Mean in the same row with different letters are significantly different ( $p < 0.05$ ).

affected by DLE addition ( $p>0.05$ ). It is considered that the protein, fat, and ash content of DLE was relatively low compared to the carbohydrate content, so it did not directly affect the rolled-dumplings significantly. However, *L. edodes* can be considered as a food additive as a good source of protein and minerals (Spim et al., 2021). The carbohydrate content was significantly higher for the samples with DLE addition than for those without DLE ( $p<0.05$ ). Bach et al. (2017) reported that the carbohydrate content of *L. edodes* was 70.91%. The increase in the carbohydrate content of the rolled-dumplings with increasing DLE addition is considered to be due to the high carbohydrate content of DLE.

Fig. 1 shows the cooking yield of the rolled-dumplings according to the addition of various DLE. There was no significant difference in the cooking yield of the rolled-dumplings without DLE and those with 7% DLE. However, the cooking yield of the samples with 9% DLE was significantly lower ( $p<0.05$ ). The protease activity of *L. edodes* is 13.01 U/g, which is similar to that of kiwi (10.26 U/g) and pineapple (19.58 U/g), which are used as meat tenderizers (Oosone et al., 2020). Qing et al. (2021) reported that when paddy straw mushroom, shimeji mushroom, and oyster mushroom powders were added to beef paste, water bound to the meat tissue was exuded by proteolysis due to the protease contained in the mushroom, thereby reducing the cooking yield, which is similar to the result of this study. In addition, Wang et al. (2019) reported that when some of the pork used in sausages was replaced with *L. edodes*, the water retention ability of *L. edodes* decreased during the cooking process as the *L. edodes* level increased, resulting in a decrease in the cooking yield. Therefore, it is thought that the decrease in the cooking yield of the rolled-dumplings with 9% DLE is due to the decrease in the water holding capacity of *L. edodes* because of the protease contained in *L. edodes*. In addition, it is thought that the addition of 7% DLE could prevent reduction of the product yield when producing rolled-dumplings.

### pH and color

Table 2 shows the pH of the rolled-dumplings with different amounts of DLE. The pH of the rolled-dumplings before and after heating increased significantly as the content of DLE (pH  $6.27\pm 0.03$ ) increased ( $p<0.05$ ). It is known that the initial pH of meat products is affected by additives, the pH of mushrooms undergoing the HAD process increases due to the loss of



**Fig. 1.** Cooking yield of rolled-dumplings with various levels of hot-air dried *Lentinula edodes pileus* (DLE). Bars with different letters are significantly different ( $p<0.05$ ).

**Table 2.** pH and color of rolled-dumplings with various levels of hot-air dried *Lentinula edodes* pileus (DLE)

Traits	DLE (%)			SEM <sup>1)</sup>		
	Non	7	9			
pH	Uncooked	5.82±0.01 <sup>c</sup>	6.02±0.02 <sup>b</sup>	6.05±0.01 <sup>a</sup>	0.025	
	Cooked	6.07±0.01 <sup>c</sup>	6.10±0.01 <sup>b</sup>	6.13±0.01 <sup>a</sup>	0.006	
Color	Uncooked	CIE L*	64.63±1.12 <sup>a</sup>	57.87±2.43 <sup>b</sup>	54.75±2.17 <sup>c</sup>	1.093
		CIE a*	1.25±0.48 <sup>b</sup>	1.67±0.62 <sup>ab</sup>	2.23±0.16 <sup>a</sup>	0.141
		CIE b*	15.45±0.96 <sup>a</sup>	13.02±1.57 <sup>b</sup>	12.15±0.80 <sup>b</sup>	0.425
	Cooked	CIE L*	66.52±2.03 <sup>a</sup>	60.97±1.55 <sup>b</sup>	59.40±1.06 <sup>b</sup>	1.072
		CIE a*	1.73±0.17 <sup>b</sup>	2.30±0.44 <sup>ab</sup>	3.04±0.94 <sup>a</sup>	0.228
		CIE b*	12.78±0.57	13.03±0.43	13.62±0.82	0.193

All values are mean±SD.

<sup>1)</sup> n=9.

<sup>a-c</sup> Mean in the same row with different letters are significantly different (p<0.05).

acid-related substances by heating (Çakmak et al., 2016; Ko and Yoo, 2018). It has also been reported that organic acids are decomposed by heat (Aktas and Yildiz, 2011). As a similar result, organic acid loss of *Stropharia rugoso-annulata* due to the HAD process was reported, and in this study, it is considered that the pH increased due to organic acid loss of *L. edodes* by HAD (Hu et al., 2020). Therefore, it is thought that the pH of the rolled-dumplings increased with the addition of DLE.

Before heating, the L\* of the rolled-dumplings with different amounts of DLE (L\*: 53.33±2.08, a\*: 5.77±0.31, b\*: 14.20±0.48) decreased significantly as DLE content increased (p<0.05). After heating, the L\* was significantly lower for the group with added DLE than for the group with no DLE (p<0.05). Before and after heating, the a\* was significantly higher for the rolled-dumplings with 9% DLE than for the congeners with no DLE. However, there was no significant difference between the a\* for the samples with 7% DLE and no DLE (p<0.05). Before heating, the b\* was significantly lower for the samples with DLE than for those without DLE (p<0.05). After heating, there was no significant difference in the b\* of the various samples (p>0.05). The Maillard reaction, a non-enzymatic browning reaction, is a chemical reaction between the carbonyl group of reducing sugars and the amino group of free amino acids that produces melanoidin, which is brown (Murata, 2021). Chen et al. (2021a) reported that L\*, a\*, b\* decreased due to enzymatic browning and non-enzymatic Maillard reaction caused by HAD of *L. edodes*. However, the increase in a\* observed with the addition of DLE is considered to have occurred because the initial redness of rolled-dumplings was lower than that of DLE. Based on these results, it seems that the color change of rolled-dumplings was influenced by the addition of DLE, which was browned by melanin generated during the HAD process.

### Texture profile analysis (TPA)

Table 3 shows the TPA data for the rolled-dumplings with different levels of DLE addition. Consumers prefer tender, juicier sausages, while spherical meat products like meatballs are harder and more elastic (Huang et al., 2005). The hardness, gumminess, and chewiness increased significantly as the DLE addition level increased (p<0.05). The cohesiveness was significantly higher for the samples with DLE than for those without DLE (p<0.05). It is known that the texture of meat products is affected by several factors, such as the particle size and moisture content of the non-meat components (Younis et al., 2021). Cellulose, the main component of the cell wall of mushrooms, is replaced by lignin during heating and is lignified

**Table 3.** Texture profile analysis of rolled-dumplings with various levels of hot-air dried *Lentinula edodes pileus* (DLE)

Traits	DLE (%)			SEM <sup>1)</sup>
	Non	7	9	
Hardness (N)	30.19±1.89 <sup>c</sup>	45.04±2.18 <sup>b</sup>	52.14±4.05 <sup>a</sup>	2.953
Springiness	0.91±0.03	0.93±0.01	0.94±0.01	0.007
Gumminess (N)	13.48±0.93 <sup>c</sup>	20.57±1.94 <sup>b</sup>	25.68±2.60 <sup>a</sup>	1.527
Chewiness (N)	11.98±0.59 <sup>c</sup>	18.35±0.86 <sup>b</sup>	23.52±1.84 <sup>a</sup>	1.528
Cohesiveness	0.43±0.02 <sup>b</sup>	0.50±0.03 <sup>a</sup>	0.50±0.01 <sup>a</sup>	0.012

All values are mean±SD.

<sup>1)</sup> n=9.

<sup>a-c</sup> Mean in the same row with different letters are significantly different (p<0.05).

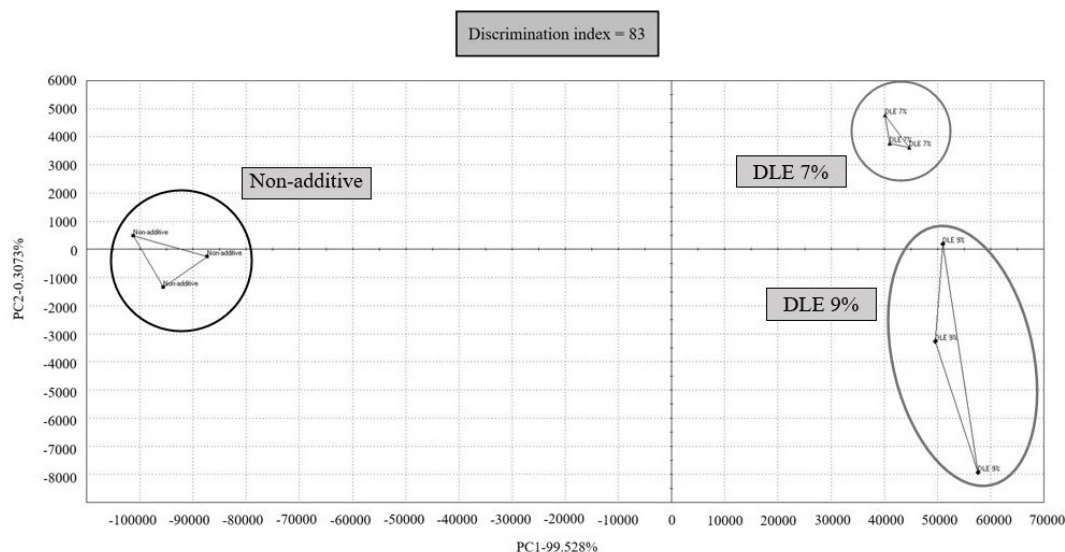
by chemical bonding with non-cellulose carbohydrates, which affects the texture (Donaldson, 2001; Yang et al., 2017). It has been reported that lignification by lignin increases the firmness of mushrooms (Jiang et al., 2010; Li et al., 2016). Furthermore, the texture properties of meat products are also known to be related to the gelation of myofibrillar protein and the structural binding of protein and water following the addition of dietary fiber (Kurt and Genççelep, 2018; Zhuang et al., 2019). Therefore, it is considered that the added DLE influenced, and in fact changed, the textural properties of the rolled-dumplings.

### E-nose

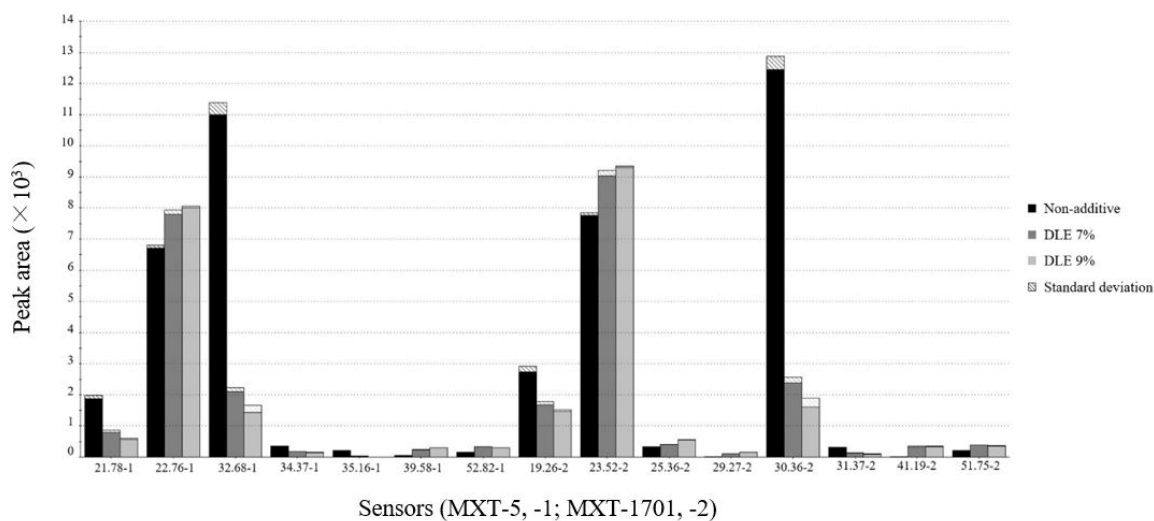
The results of e-nose analysis of the rolled-dumpling samples with different DLE contents are shown in Figs. 2A and B as the PCA and mean bar graphs, respectively. The contribution rates of the first principal component (PC1; X-axis) and the second principal component (PC2; Y-axis) were 99.528% and 0.3073%, respectively. The difference caused by adding DLE to the rolled-dumplings was mainly confirmed through PC1. In the PCA plot, the samples with and without DLE were located at positive and negative values on the X-axis, respectively. Therefore, it was confirmed that DLE addition caused a difference in the flavor of the rolled-dumplings. The values were observed for the specific sensors (21.78, 22.76, 32.68, 34.37, 35.16, 39.58, 52.82) of the MXT-5 column (-1) and the specific sensors (19.26, 23.52, 25.36, 29.27, 30.36, 31.37, 41.19, 51.75) of the MXT-1701 column (-2). As the DLE content increased, the mean bar graphs showed a positive correlation for the 22.76-1, 39.58-1, 52.82-1, 23.52-2, 25.36-2, 29.27-2, 41.19-2, and 51.75-2 sensors. The representative compounds and flavors associated with each sensor are 22.76-1 (methanethiol: meaty, sulfurous), 39.58-1 (3-methylbutanal: malty, toasted), 52.82-1 (pyrazine: pungent, roasted hazelnuts), 23.52-2 (ethanol: pungent, sweet), 25.36-2, 29.27-2 (carbon disulfide: burnt, sulfurous), 41.19-2 (1-hydroxy-2-propanone: caramelized, sweet), 51.75-2 (toluene: caramelized, pungent). DLE forms a distinctive flavor due to the Maillard reaction induced by heating and amadori rearrangement occurring at the beginning of the browning reaction (Li et al., 2022). The flavor characteristics of the rolled-dumplings were affected by the compounds exhibiting the characteristic flavor of DLE. The 21.78-1, 32.68-1, 34.37-1, 35.16-1, 19.26-2, 30.36-2, and 31.37-2 sensors showed negative correlation. The content of compounds corresponding to 21.78-1 (trimethylamine: ammoniacal), 32.68-1, 30.36-2 (2-methylfuran: burnt, musty), 34.37-1 (acetic acid: acidic, sour), 35.16-1 (2-methyl-1-propanol: alcoholic, bitter), 19.26-2 (acetaldehyde: ethereal), and 31.37-2 (ethyl acetate: acidic, ethereal) was also thought to be decreased by DLE addition. DLE addition affects the flavor properties of the rolled-dumplings by increasing the positively acceptable odor compounds such as methanethiol and 3-methylbutanal and causing a relative decrease in the negatively acceptable odor



(A)



(B)

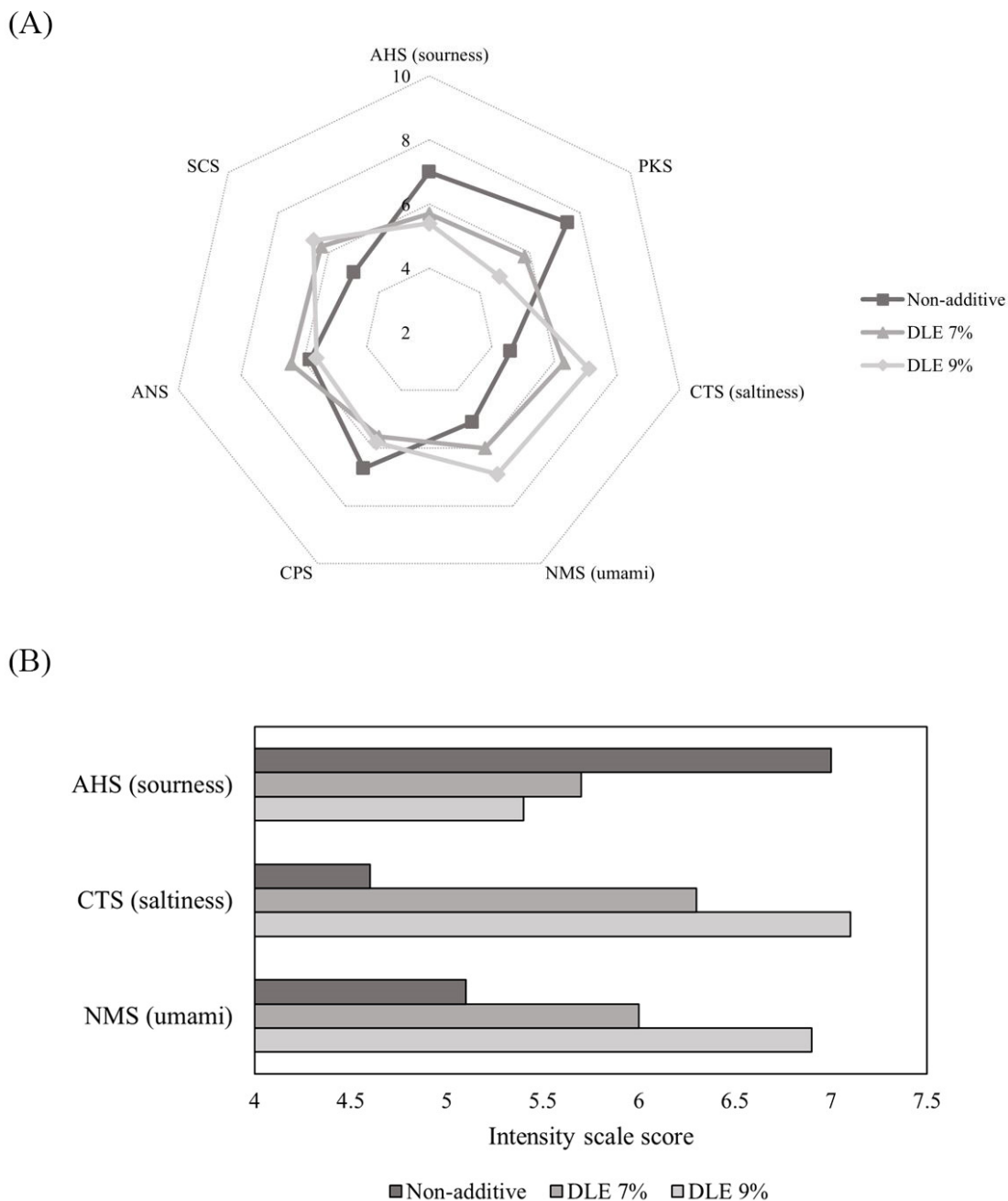


**Fig. 2.** Electronic-nose (e-nose) data of rolled-dumplings with various levels of hot-air dried *Lentinula edodes pileus* (DLE). (A) Principal component analysis score plots of rolled-dumplings with various levels of DLE using flash gas chromatography e-nose. (B) Mean bar graphs of selected main peak area used as raw data in chromatogram representing main chemical compounds of rolled-dumplings with various levels of DLE using flash gas chromatography e-nose. Mean bar graphs X-axis: variables (sensors), -1 (MXT-5), -2 (MXT-1701); Mean bar graphs Y-axis: abundance, size ( $\times 10^3$ ).

compounds such as trimethylamine and acetic acid. These flavors are associated with the flavor compounds formed by the chemical reactions of DLE during the HAD process.

### E-tongue

The results of e-tongue analysis of the rolled-dumplings with different DLE content are shown in Figs. 3A and B as the radar chart and intensity scale bar chart, respectively. The sourness was ranked as 5.7 and 5.4 for the samples with 7% and



**Fig. 3. Electronic-tongue (e-tongue) data chart of rolled-dumplings with various levels of hot-air dried *Lentinula edodes pileus* (DLE).** (A) Intensity comparison score radar chart of rolled-dumplings with various levels of DLE using taste sensors e-tongue. (B) Intensity scale score bar chart of rolled-dumplings with various levels of DLE using taste sensors e-tongue. AHS, sourness; SCS, standard sensor; PKS, auxiliary sensor; ANS, auxiliary sensor; CTS, saltiness; CPS, standard sensor; NMS, umami.

9% DLE, respectively, indicating lower strength than that of the sample without DLE, for which the sourness was ranked as 7.0. It seems that the higher pH due to the increase in the DLE content reduced the sour taste of the rolled-dumplings. Sourness is mainly determined by pH, and sourness can be predicted through pH measurement (Clement et al., 2020). The saltiness was ranked as 6.3 and 7.1 for the samples with 7% and 9% DLE, respectively, indicating higher saltiness than that of the sample without DLE (4.6). The umami taste was ranked as 6.0 and 6.9 for the samples with 7% and 9% DLE,

respectively, which is higher than that of the sample without DLE (5.1). Edible mushrooms contain MSG-like amino acids (Asp, Glu) and 5'-nucleotides, which are umami factors. Umami contributes to the palatability of food, promotes food intake, acts as an inhibitor of bitterness which has a negative organoleptic effect, and is a saltiness enhancer (Kim et al., 2015; Myrdal Miller et al., 2014; Zhang et al., 2013; Zhu et al., 2022). The equivalent umami concentration of DLE at 60°C has been reported to be 19.7 g MSG/100 g, and it is known that compounds such as free amino acids and 5'-nucleotides can be used as flavor enhancers in low-salt foods (dos Santos Harada-Padermo et al., 2020; Yang et al., 2019). When ground beef steak and beef burgers were prepared using *L. edodes* extract, the saltiness and umami taste were improved, similar to the results of this study (Dermiki et al., 2013; Mattar et al., 2018). Based on the results, the umami factor of *L. edodes* extracted in the HAD process improved the saltiness and umami taste of the rolled-dumplings. Therefore, it is considered that with DLE addition, the amount of the organoleptic properties of meat products can be improved, as DLE acts as a saltiness and flavor enhancer.

### Organoleptic evaluation

Table 4 shows the results of the organoleptic evaluation of the rolled-dumplings. The samples with DLE had significantly higher color values than those without DLE ( $p < 0.05$ ). The reduction in  $L^*$  for the rolled-dumplings due to DLE addition was positively perceived by consumers compared to that of the sample without DLE. On the other hand, because there was no significant difference in  $a^*$  for the samples with 7% DLE and no DLE,  $a^*$  for the rolled-dumplings does not seem to affect consumers' color acceptance. Meat products with high-fat content are known to have a brighter color than products with low-fat content, which may reflect the perception that consumers prefer products with a low-fat content when choosing products (Issanchou, 1996; Tobin et al., 2012). The sample with 7% DLE received the highest score in the flavor category, and that without DLE received the lowest score ( $p < 0.05$ ). As seen from the e-nose and e-tongue data, DLE addition may influence the tastes and flavors compared to those of the samples without DLE. Therefore, DLE can be used as an additive to increase consumer acceptance. Also, for the lowered flavor score of 9% DLE, Du et al. (2021) explained that this was because too much mushroom flavor was created with increasing mushroom content. In the texture evaluation, the sample with 7% DLE received a significantly higher score than that without DLE ( $p < 0.05$ ). It was confirmed that the enhancement of the texture properties due to DLE addition contributed to improving the texture of the rolled-dumplings. The juiciness was evaluated as

**Table 4.** Organoleptic evaluation of rolled-dumplings with various levels of hot-air dried *Lentinula edodes pileus* (DLE)

Traits <sup>1)</sup>	DLE (%)			SEM <sup>2)</sup>
	Non	7	9	
Color	8.06±0.78 <sup>b</sup>	9.44±0.50 <sup>a</sup>	9.19±0.65 <sup>a</sup>	0.178
Flavor	7.63±0.52 <sup>c</sup>	9.31±0.59 <sup>a</sup>	8.69±0.59 <sup>b</sup>	0.183
Texture	8.13±0.64 <sup>b</sup>	8.94±0.56 <sup>a</sup>	8.63±0.95 <sup>ab</sup>	0.160
Juiciness	8.88±0.23 <sup>a</sup>	8.69±0.46 <sup>a</sup>	8.00±0.71 <sup>b</sup>	0.126
Off-flavor	8.00±0.76 <sup>b</sup>	8.94±0.78 <sup>a</sup>	8.13±0.64 <sup>b</sup>	0.166
Overall acceptability	7.88±0.64 <sup>b</sup>	9.19±0.53 <sup>a</sup>	8.69±0.59 <sup>a</sup>	0.161

All values are mean±SD.

<sup>1)</sup> Color, flavor, texture, juiciness, overall acceptability (10=extremely good or desirable, 1=extremely bad or undesirable); off-flavor (10=extremely not felt, 1=extremely felt).

<sup>2)</sup> n=9.

<sup>a-c</sup> Mean in the same row with different letters are significantly different ( $p < 0.05$ ).

significantly higher for the samples with 7% DLE than for those with 9% DLE ( $p < 0.05$ ). The previous results show that the decrease in the moisture content according to the DLE addition was proportional to the cooking yield. The samples with 7% DLE received the most favorable evaluation in the off-flavor categories compared to those without DLE and with 9% DLE ( $p < 0.05$ ). Based on the fact that the samples with 9% DLE received a lower score in the flavor, juiciness, and off-flavor categories than the samples with 7% DLE, it is judged that excessive DLE addition acts as a foreign substance and adversely affects the organoleptic acceptance of consumers. However, adding DLE to rolled-dumplings had a higher flavor score than when it was not added, and it can be seen that consumers appreciate the contribution of flavor more in the overall acceptability category. In the overall acceptability category, the samples with DLE received significantly higher scores than those without DLE ( $p < 0.05$ ). Consumers perceive the organoleptic properties through the interaction of taste, tenderness, texture, and gravy (Novaković and Tomašević, 2017). Therefore, it is judged that the sample with DLE, which received higher scores than those without DLE in various categories, will receive higher scores in overall preference. When *L. edodes* powder was added to Frankfurter sausage, high flavor and preference scores were obtained due to the improved organoleptic properties induced by flavor-enhancing substances (5'-GMP and inosine) and taste active compounds (MSG) (Pil-Nam et al., 2015). In addition, the ability of *L. edodes* to improve the organoleptic properties of low-fat meatballs was reported, suggesting that the use of *L. edodes* for flavor enhancement in the production of low-fat meatballs can increase consumer acceptance by improving the organoleptic properties (Ramle et al., 2021). The addition of DLE to rolled-dumplings may be positively accepted by consumers because the flavor of the dumplings is enhanced by flavor enhancers and flavoring ingredients in DLE. Moreover, 7% DLE can be set as the optimal addition ratio because the samples with this DLE content received the highest scores in all organoleptic evaluation categories.

## Conclusion

The changes in the physicochemical and organoleptic properties of rolled-dumplings due to DLE addition were analyzed. The addition of DLE reduced the moisture content and  $L^*$ , while increasing the carbohydrate content, pH,  $a^*$ , texture properties of the rolled-dumplings. The cooking yield was reduced by 9% DLE addition, but was not affected by 7% DLE addition. The loss of acid-related substances and browning reactions caused by the HAD process decreased the pH and color change of the rolled-dumplings. DLE improved the texture properties of rolled-dumplings. E-nose and e-tongue analyses showed that the addition of DLE to rolled-dumplings increased the positively acceptable flavor compounds such as methanethiol (meaty, sulfurous), 3-methylbutanal (malty, toasted) and the saltiness and umami taste were also improved. In the organoleptic evaluation, the color change due to DLE addition resulted in a high color score for the rolled-dumplings. In addition, the difference in the flavor and taste induced by DLE had a positive effect on the flavor and off-flavor scores. Because of the changes in the texture properties of the rolled-dumplings, DLE also positively affected the texture. DLE addition to rolled-dumplings could receive a significantly positive overall evaluation. However, the addition of 9% DLE may have a negative effect on the organoleptic acceptance as it is perceived as a foreign substance. Therefore, DLE has the potential to be applied as a flavoring agent, flavor enhancer for rolled-dumplings. The addition of DLE to rolled-dumplings can improve the quality and organoleptic properties and cause a positive response in consumer acceptance.

## Conflicts of Interest

The authors declare no potential conflicts of interest.

## Acknowledgements

This work was carried out with the support of the “Cooperative Research Program for Agriculture Science and Technology Development (Project No. PJ016217)”, Rural Development Administration, Korea. And this research was supported by the research grant of the Kongju National University in 2022.

## Author Contributions

Conceptualization: Go HY. Data curation: Lee SH, Kim HY. Formal analysis: Go HY, Lee SH. Methodology: Kim HY. Software: Lee SH, Kim HY. Validation: Kim HY. Investigation: Go HY, Lee SH. Writing - original draft: Go HY. Writing - review & editing: Go HY, Lee SH, Kim HY.

## Ethics Approval

Organoleptic evaluation of this study was approved by the Kongju National University’s Ethics Committee (Authority No: KNU\_IRB\_2020-40).

## References

- Aktas ET, Yildiz H. 2011. Effects of electropulsation treatment on chlorophyll and carotenoid extraction yield from spinach and tomato. *J Food Eng* 106:339-346.
- Alakali JS, Irtwange SV, Mzer MT. 2010. Quality evaluation of beef patties formulated with bambara groundnut (*Vigna subterranean* L.) seed flour. *Meat Sci* 85:215-223.
- AOAC. 2005. Official methods of analysis of AOAC International. 18<sup>th</sup> ed. AOAC International, Gaithersburg, MD, USA.
- aTFIS. 2019. Food market newsletter week 4 of December - Dumplings. Available from: [https://www.atfis.or.kr/home/pdf/view.do?path=/upload\\_old/ARTICLE/20191227/3373/587AA436DC474C3F8D770EC034CB617E.pdf](https://www.atfis.or.kr/home/pdf/view.do?path=/upload_old/ARTICLE/20191227/3373/587AA436DC474C3F8D770EC034CB617E.pdf). Accessed at Dec 27, 2019.
- aTFIS. 2020. 2020 Food industry market and consumer trend analysis. Available from: [https://www.atfis.or.kr/home/pdf/view.do?path=/upload\\_old/ARTICLE/20210113/3650/2DE24C1C9559452CBBD6D9D4E1096792.pdf](https://www.atfis.or.kr/home/pdf/view.do?path=/upload_old/ARTICLE/20210113/3650/2DE24C1C9559452CBBD6D9D4E1096792.pdf). Accessed at Jan 13, 2021.
- Bach F, Helm CV, Bellettini MB, Maciel GM, Haminiuk CWI. 2017. Edible mushrooms: A potential source of essential amino acids, glucans and minerals. *Int J Food Sci Technol* 52:2382-2392.
- Bae MA, Park SH, Cheng S, Chang KJ. 2021. Comparison of consumption behaviors and development needs for the home meal replacement among Chinese college students studying abroad in Korea, Chinese college students in China, and Korean college students in Korea. *Nutr Res Pract* 15:747-760.
- Buratti S, Malegori C, Benedetti S, Oliveri P, Giovanelli G. 2018. E-nose, e-tongue and e-eye for edible olive oil characterization and shelf life assessment: A powerful data fusion approach. *Talanta* 182:131-141.
- Çakmak RŞ, Tekeoğlu O, Bozkır H, Ergün AR, Baysal T. 2016. Effects of electrical and sonication pretreatments on the drying rate and quality of mushrooms. *LWT-Food Sci Technol* 69:197-202.
- Cerón-Guevara MI, Rangel-Vargas E, Lorenzo JM, Bermúdez R, Pateiro M, Rodríguez JA, Sánchez-Ortega I, Santos EM.

2020. Effect of the addition of edible mushroom flours (*Agaricus bisporus* and *Pleurotus ostreatus*) on physicochemical and sensory properties of cold-stored beef patties. *J Food Process Preserv* 44:e14351.
- Chen D, Wang S, Li M, Hao T, Lin S. 2021a. The dynamic changes in product attributes of shiitake mushroom pilei and stipes during dehydration by hot air drying. *J Food Process Preserv* 45:e15648.
- Chen Q, Hu Y, Wen R, Wang Y, Qin L, Kong B. 2021b. Characterisation of the flavour profile of dry fermented sausages with different NaCl substitutes using HS-SPME-GC-MS combined with electronic nose and electronic tongue. *Meat Sci* 172:108338.
- Choi Y, Lee SM, Chun J, Lee HB, Lee J. 2006. Influence of heat treatment on the antioxidant activities and polyphenolic compounds of Shiitake (*Lentinus edodes*) mushroom. *Food Chem* 99:381-387.
- Clement H, Prost C, Rannou C, Chiron H, Bonnand-Ducasse M, Courcoux P, Onno B. 2020. Can instrumental characterization help predicting sour taste perception of wheat sourdough bread? *Food Res Int* 133:109159.
- Dermiki M, Mounayar R, Suwankanit C, Scott J, Kennedy OB, Mottram DS, Gosney MA, Blumenthal H, Methven, L. 2013. Maximising umami taste in meat using natural ingredients: Effects on chemistry, sensory perception and hedonic liking in young and old consumers. *J Sci Food Agric* 93:3312-3321.
- Donaldson LA. 2001. Lignification and lignin topochemistry: An ultrastructural view. *Phytochemistry* 57:859-873.
- dos Santos Harada-Padermo S, Dias-Faceto LS, Selani MM, Alvim ID, Floh EIS, Macedo AF, Bogusz S, dos Santos Dias CT, Conti-Silva AC, de Souza Vieira TMF. 2020. Umami ingredient: Flavor enhancer from shiitake (*Lentinula edodes*) byproducts. *Food Res Int* 137:109540.
- Du X, Muniz A, Sissons J, Wang W, Juma S. 2021. Consumer acceptance of egg white partially substituted with mushrooms and mushroom-egg white flavor pairing. *Food Sci Nutr* 9:1410-1421.
- Ğağlarımak N. 2011. Chemical composition and nutrition value of dried cultivated culinary-medicinal mushrooms from Turkey. *Int J Med Mushrooms* 13:351-356.
- Hu S, Feng X, Huang W, Ibrahim SA, Liu Y. 2020. Effects of drying methods on non-volatile taste components of *Stropharia rugoso-annulata* mushrooms. *LWT-Food Sci Technol* 127:109428.
- Huang SC, Shiau CY, Liu TE, Chu CL, Hwang DF. 2005. Effects of rice bran on sensory and physico-chemical properties of emulsified pork meatballs. *Meat Sci* 70:613-619.
- Issanchou S. 1996. Consumer expectations and perceptions of meat and meat product quality. *Meat Sci* 43:5-19.
- Jiang T, Jahangir MM, Wang Q, Ying T. 2010. Accumulation of lignin and malondialdehyde in relation to quality changes of button mushrooms (*Agaricus bisporus*) stored in modified atmosphere. *Food Sci Technol Int* 16:217-224.
- Kim MJ, Chu WM, Park EJ. 2012. Antioxidant and antigenotoxic effects of shiitake mushrooms affected by different drying methods. *J Korean Soc Food Sci Nutr* 41:1041-1048.
- Kim MJ, Son HJ, Kim Y, Misaka T, Rhyu MR. 2015. Umami-bitter interactions: The suppression of bitterness by umami peptides via human bitter taste receptor. *Biochem Biophys Res Commun* 456:586-590.
- Kim TK, Choi HD, Kim YB, Jeon KH, Choi YS. 2017. Home meal replacement status and technology trends. *Food Ind Nutr* 22:1-7.
- Kim YH, Ahn N. 2019. The main meals review on the culinary books of Joseon dynasty. *Korean Acad Food Serv Ind Manage* 15:45-62.
- Ko YJ, Yoo SS. 2018. Effect of black carrot (*Daucus carota* L.) on the quality of pork hamburger patties. *Korean J Food Nutr* 31:345-354.

- Kong Y, Zhang LL, Zhao J, Zhang YY, Sun BG, Chen HT. 2019. Isolation and identification of the umami peptides from shiitake mushroom by consecutive chromatography and LC-Q-TOF-MS. *Food Res Int* 121:463-470.
- Kurt A, Genççelep H. 2018. Enrichment of meat emulsion with mushroom (*Agaricus bisporus*) powder: Impact on rheological and structural characteristics. *J Food Eng* 237:128-136.
- Lee DY. 2017. Growth of food industry from change of consumer's living environment: HMR market growth factor. *Food Sci Ind* 50:33-38.
- Li D, Qin X, Tian P, Wang J. 2016. Toughening and its association with the postharvest quality of king oyster mushroom (*Pleurotus eryngii*) stored at low temperature. *Food Chem* 196:1092-1100.
- Li W, Li R, Chen W, Feng J, Wu D, Zhang Z, Zhang J, Yang Y. 2022. The anabolism of sulphur aroma volatiles responds to enzymatic and non-enzymatic reactions during the drying process of shiitake mushrooms. *Food Chem* 371:131123.
- Liu Y, Luo M, Liu F, Feng X, Ibrahim SA, Cheng L, Huang W. 2020. Effects of freeze drying and hot-air drying on the physicochemical properties and bioactivities of polysaccharides from *Lentinula edodes*. *Int J Biol Macromol* 145:476-483.
- Manzocco L, Calligaris S, Mastrocola D, Nicoli MC, Lericci CR. 2000. Review of non-enzymatic browning and antioxidant capacity in processed foods. *Trends Food Sci Technol* 11:340-346.
- Mattar TV, Gonçalves CS, Pereira RC, Faria MA, de Souza VR, Carneiro JDS. 2018. A shiitake mushroom extract as a viable alternative to NaCl for a reduction in sodium in beef burgers: A sensory perspective. *Br Food J* 120:1366-1380.
- Morales D, Rutckeviski R, Villalva M, Abreu H, Soler-Rivas C, Santoyo S, Iacomini M, Smiderle FR. 2020. Isolation and comparison of  $\alpha$ - and  $\beta$ -D-glucans from shiitake mushrooms (*Lentinula edodes*) with different biological activities. *Carbohydr Polym* 229:115521.
- Murata M. 2021. Browning and pigmentation in food through the Maillard reaction. *Glycoconj J* 38:283-292.
- Myrdal Miller A, Mills K, Wong T, Drescher G, Lee SM, Sirimuangmoon C, Schaefer S, Langstaff S, Minor B, Guinard JX. 2014. Flavor-enhancing properties of mushrooms in meat-based dishes in which sodium has been reduced and meat has been partially substituted with mushrooms. *J Food Sci* 79:S1795-S1804.
- Novaković S, Tomašević I. 2017. A comparison between Warner-Bratzler shear force measurement and texture profile analysis of meat and meat products: A review. *IOP Conf Ser Earth Environ Sci* 85:012063.
- Oosone S, Kashiwaba A, Yanagihara N, Yoshikawa J, Kashiwagi Y, Maehashi K. 2020. The role of amylolytic and proteolytic enzyme activities of vegetables, fruits, and edible fungi in flavor enhancement during cooking. *Int J Gastron Food Sci* 22:100264.
- Pil-Nam S, Park KM, Kang GH, Cho SH, Park BY, Van-Ba H. 2015. The impact of addition of shiitake on quality characteristics of frankfurter during refrigerated storage. *LWT-Food Sci Technol* 62:62-68.
- Qin L, Gao JX, Xue J, Chen D, Lin SY, Dong XP, Zhu BW. 2020. Changes in aroma profile of shiitake mushroom (*Lentinus edodes*) during different stages of hot air drying. *Foods* 9:444.
- Qing Z, Cheng J, Wang X, Tang D, Liu X, Zhu M. 2021. The effects of four edible mushrooms (*Volvariella volvacea*, *Hypsizygus marmoreus*, *Pleurotus ostreatus* and *Agaricus bisporus*) on physicochemical properties of beef paste. *LWT-Food Sci Technol* 135:110063.
- Qiu Y, Bi J, Jin X, Hu L, Lyu J, Wu X. 2021. An understanding of the changes in water holding capacity of rehydrated shiitake mushroom (*Lentinula edodes*) from cell wall, cell membrane and protein. *Food Chem* 351:129230.
- Ramle NA, Zulkurnain M, Ismail-Fitry MR. 2021. Replacing animal fat with edible mushrooms: A strategy to produce high-

- quality and low-fat buffalo meatballs. *Int Food Res J* 28:905-915.
- Spim SRV, Castanho NRCM, Pistila AMH, Jozala AF, Oliveira Júnior JM, Grotto D. 2021. *Lentinula edodes* mushroom as an ingredient to enhance the nutritional and functional properties of cereal bars. *J Food Sci Technol*. 58:1349-1357.
- Stefanello FS, Cavalheiro CP, Ludtke FL, Silva MDSD, Fries LLM, Kubota EH. 2015. Oxidative and microbiological stability of fresh pork sausage with added sun mushroom powder. *Ciênc Agrotec* 39:381-389.
- Tan J, Xu J. 2020. Applications of electronic nose (e-nose) and electronic tongue (e-tongue) in food quality-related properties determination: A review. *Artif Intell Agric* 4:104-115.
- Tsai SY, Tsai HL, Mau JL. 2008. Non-volatile taste components of *Agaricus blazei*, *Agrocybe cylindracea* and *Boletus edulis*. *Food Chem* 107:977-983.
- Tobin BD, O'Sullivan MG, Hamill RM, Kerry JP. 2012. Effect of varying salt and fat levels on the sensory and physicochemical quality of frankfurters. *Meat Sci* 92:659-666.
- Wang L, Guo H, Liu X, Jiang G, Li C, Li X, Li Y. 2019. Roles of *Lentinula edodes* as the pork lean meat replacer in production of the sausage. *Meat Sci* 156:44-51.
- Weng Z, Sun L, Wang F, Sui X, Fang Y, Tang X, Shen X. 2021. Assessment the flavor of soybean meal hydrolyzed with Alcalase enzyme under different hydrolysis conditions by E-nose, E-tongue and HS-SPME-GC-MS. *Food Chem X* 12:100141.
- Xu L, Fang X, Wu W, Chen H, Mu H, Gao H. 2019. Effects of high-temperature pre-drying on the quality of air-dried shiitake mushrooms (*Lentinula edodes*). *Food Chem* 285:406-413.
- Yang W, Du H, Mariga AM, Pei F, Ma N, Hu Q. 2017. Hot air drying process promotes lignification of *Lentinus edodes*. *LWT-Food Sci Technol* 84:726-732.
- Yang X, Zhang Y, Kong Y, Zhao J, Sun Y, Huang M. 2019. Comparative analysis of taste compounds in shiitake mushrooms processed by hot-air drying and freeze drying. *Int J Food Prop* 22:1100-1111.
- Younis K, Ahmad S, Malik MA. 2021. Mosambi peel powder incorporation in meat products: Effect on physicochemical properties and shelf life stability. *Appl Food Res* 1:100015.
- Yun SW, Kim SJ, Kim MR. 2020. Quality characteristics and antioxidant activities of Yanggaeng added with *Lentinus edodes* powder. *J East Asian Soc Diet Life* 30:162-171.
- Zhang L, Hu Y, Wang Y, Kong B, Chen Q. 2021a. Evaluation of the flavour properties of cooked chicken drumsticks as affected by sugar smoking times using an electronic nose, electronic tongue, and HS-SPME/GC-MS. *LWT-Food Sci Technol* 140:110764.
- Zhang X, Wu H, Lin L, Du X, Tang S, Liu H, Yang H. 2021b. The qualitative and quantitative assessment of xiaochaihu granules based on e-eye, e-nose, e-tongue and chemometrics. *J Pharm Biomed Anal* 205:114298.
- Zhang Y, Venkitasamy C, Pan Z, Wang W. 2013. Recent developments on umami ingredients of edible mushrooms: A review. *Trends Food Sci Technol* 33:78-92.
- Zhang Y, Ye YL, Liu JJ, Xiao YG, Sun QX, He Z. 2011. The relationship between Chinese raw dumpling quality and flour characteristics of Shandong winter wheat cultivars. *Agric Sci China* 10:1792-1800.
- Zhu Y, Zhou X, Chen YP, Liu Z, Jiang S, Chen G, Liu Y. 2022. Exploring the relationships between perceived umami intensity, umami components and electronic tongue responses in food matrices. *Food Chem* 368:130849.
- Zhuang X, Han M, Jiang X, Bai Y, Zhou H, Li C, Xu XL, Zhou GH. 2019. The effects of insoluble dietary fiber on myofibrillar protein gelation: Microstructure and molecular conformations. *Food Chem* 275:770-777.