



# Wall shear stress on vascular smooth muscle cells exerts angiogenic effects on extracranial arteriovenous malformations

Jeong Yeop Ryu<sup>1</sup>, Tae Hyun Park<sup>1</sup>, Joon Seok Lee<sup>1</sup>, Eun Jung Oh<sup>1,2</sup>, Hyun Mi Kim<sup>1,2</sup>, Seok-Jong Lee<sup>3</sup>, Jongmin Lee<sup>4</sup>, Sang Yub Lee<sup>4</sup>, Seung Huh<sup>5</sup>, Ji Yoon Kim<sup>6</sup>, Saewon Im<sup>7</sup>, Ho Yun Chung<sup>1,2</sup>

<sup>1</sup>Department of Plastic and Reconstructive Surgery, <sup>2</sup>Cell and Matrix Research Institute, Departments of <sup>3</sup>Dermatology, <sup>4</sup>Radiology, <sup>5</sup>Surgery, and <sup>6</sup>Pediatrics, School of Medicine, Kyungpook National University, Daegu; <sup>7</sup>School of Business Administration, Kyungpook National University, Daegu, Korea

**Background** In addition to vascular endothelial cells, vascular smooth muscle cells (VSMCs) are subject to continuous shear stress because of blood circulation. The angiogenic properties of VSMCs in extracranial arteriovenous malformations (AVMs) may exceed those of normal blood vessels if the body responds more sensitively to mechanical stimuli. This study was performed to investigate the hypothesis that rapid angiogenesis may be achieved by mechanical shear stress.

**Methods** VSMCs were obtained from six patients who had AVMs and six normal controls. The target genes were set to angiopoietin-2 (*AGP2*), aquaporin-1 (*AQP1*), and transforming growth factor-beta receptor 1 (*TGFBR1*). Reverse-transcriptase polymerase chain reaction (RT-PCR) and real-time PCR were implemented to identify the expression levels for target genes. Immunofluorescence was also conducted.

**Results** Under the shear stress condition, mean relative quantity values of *AGP2*, *AQP1*, and *TGFBR1* in AVM tissues were  $1.927 \pm 0.528$ ,  $1.291 \pm 0.031$ , and  $2.284 \pm 1.461$  when compared with neutral conditions. The expression levels of all three genes in AVMs were higher than those in normal tissue except for *AQP1* under shear stress conditions. Immunofluorescence also revealed increased staining of shear stress-induced genes in the normal tissue and in AVM tissue.

**Conclusions** Shear stress made the VSMCs of AVMs more sensitive. Although the pathogenesis of AVMs remains unclear, our study showed that biomechanical stimulation imposed by shear stress may aggravate angiogenesis in AVMs.

**Keywords** Vascular smooth muscle / Shear strength / Arteriovenous malformations

**Correspondence:** Ho Yun Chung  
Department of Plastic and Reconstructive Surgery, Cell and Matrix Research Institute, School of Medicine, Kyungpook National University, 130 Dongdeok-ro, Jung-gu, Daegu 41944, Korea  
Tel: +82-53-420-5692  
Fax: +82-53-425-3879  
E-mail: hy-chung@knu.ac.kr

This work was supported by Biomedical Research Institute Grant, Kyungpook National University Hospital (2019).

Received: May 10, 2021 • Revised: August 10, 2021 • Accepted: August 30, 2021  
pISSN: 2234-6163 • eISSN: 2234-6171 • <https://doi.org/10.5999/aps.2021.00626> • Arch Plast Surg 2022;49:115-120

## INTRODUCTION

Vascular anomalies are diseases that affect the surrounding tissues and blood vessels due to changes in blood vessel walls and

the endothelium [1]. They can be divided into vascular tumors and malformations according to the International Society for the Study of Vascular Anomalies by Mulliken and Glowacki [2]. Vascular tumors are characterized by an abnormal overgrowth

of vascular endothelial cells; however, malformations are based on structural anomalies of the vascular walls without neoplastic proliferation. Vascular malformations are classified into several types according to the specific type of anomalies [3].

An extracranial arteriovenous malformation (AVM) is an abnormal tangle of the vascular system that comprises arteries that connect directly to veins, bypassing the normal capillary network. These shunts consist of a mass of vessels that produce a vascular network called the nidus. Altered hemodynamics develop due to the nidus [4].

AVMs are classified according to the Schobinger staging system by clinical severity. Stage I (quiescence) is a generally asymptomatic state in which the macule is pink/blue. In stage II, mucosal or skin warmth, discoloration and edema, and pulsation are evident. Stage III is characterized by pain, bleeding, ulceration, or skin necrosis. Stage IV lesions are very large, causing increased blood flow, and heart failure (Table 1) [5].

Several studies on the causes of AVM are ongoing, but the results are still uncertain. Five theories to explain the causes of AVMs have been presented: biomechanical activation, extracellular matrix dysregulation, endothelial cell remodeling, hormonal stimulation, and pericyte dysfunction [6]. Of these, biomechanical activation was the focus of this study. Shear stress, which continuously affects vascular walls by blood flow, has been identified as an important biomechanical stimulus.

Our previous study showed that oscillatory shear stress promoted angiogenic effects on the endothelial cells of AVMs [7]. Some studies have found that gene expression in vascular smooth muscle cells (VSMCs) was also affected by mechanical stress. Black et al. [8] reported that cyclic stretching upregulated vascular endothelial growth factor expression via the transforming growth factor-beta 1 (TGF- $\beta$ 1)-dependent activation of NAD(P)H oxidase and increased generation of reactive oxygen species. Anwar et al. [9] found that mechanical stretching modulated the expression of several genes both in vascular endothelial cells and VSMCs. We also hypothesized that VSMCs in AVMs, not endothelial cells, more frequently undergo development in response to mechanical stress than in normal arterial vessels. We therefore conducted the present study to identify abnormal angiogenesis according to oscillating shear stress.

## METHODS

This research was approved by the Institutional Review Board of Kyungpook National University Hospital (IRB No. 2018-04-020-007) and was performed in accordance with the principles of the Declaration of Helsinki. All participants provided written informed consent to use their tissue samples.

Six patients with AVMs and six normal controls without AVMs participated in this study. We obtained vascular tissue samples from each participant and extracted VSMCs from the tissue samples. To do so, vascular tissues were washed several times with phosphate-buffered saline and cut into fine pieces. Smooth muscle cell medium (1–2 mL; SMCM Media 1101, ScienCell Research Laboratories, Carlsbad, CA, USA) was added to a 60-well plate, and finely cut tissue pieces were placed into the medium. Most of the medium was then suctioned out of each well, and the samples were fixed for 5–10 days. Subsequently, VSMCs were isolated in an incubator with CO<sub>2</sub>, and cells were allowed to proliferate continuously. This process was repeated for each participant's sample. To confirm that the isolated VSMCs were pure, we conducted an additional biological analysis. Immunohistochemistry (IHC) was performed using anti-smooth muscle actin antibody (Actin, Smooth Muscle 1A4 Mouse Monoclonal Antibody; Cell Marque Corp., Rocklin, CA, USA). Three genes—angiopoietin-2 (AGP2), aquaporin-1 (AQP1), and transforming growth factor-beta receptor 1 (TGFBRI)—were identified as the target genes for this study.

In order to establish the settings for oscillating shear stress and time, the degree of change in the shape of cells ( $M$ ) can be described as  $M = kft$  (where  $k$  is a constant value,  $f$  is force, and  $t$  is time). To define  $f$ ,  $t$  should have a consistent value; for our study, it was set to 24 hours. We defined  $f_{min}$  as the minimum shear stress at which the cells began to change shape, and  $f_{max}$  was defined as the maximum shear stress just before the cells were destroyed. Next, we defined  $t_{max}$  as the maximum time during which shear stress could be applied. In order to find the value of  $t_{max}$  corresponding to a change in the cellular shape, VSMCs were observed at 0, 6, 12, 24, 48, and 72 hours after the value of  $f$  was set to 4.5 dyn/cm<sup>2</sup>.

Reverse-transcription polymerase chain reaction (RT-PCR) and real-time PCR were implemented to measure the amount of gene expression at the RNA level. These results were analyzed using the comparative cycle threshold (Ct) method. A detailed description of the comparative Ct method was presented in our previous study [7]. For each target gene, the relative quantity (RQ) value was calculated before and after shear stress was applied. In addition, the condition of shear stress was matched and the RQ values between AVMs and normal vascular tissue were

**Table 1.** Schobinger staging of arteriovenous malformations

Stage	Clinical findings
I (Quiescence)	Warm, pink-blue, shunting on Doppler
II (Expansion)	Enlargement, pulsation, thrill, bruit, tortuous veins
III (Destruction)	Dystrophic skin changes, ulceration, bleeding, pain
IV (Decompensation)	Cardiac failure

calculated. For a molecular biological comparison, the VSMCs were immunostained to identify the function of VSMCs before and after shear stress was applied to tissue from AVMs and normal arteries. Immunostained VSMCs were observed by a super-resolution, highly sensitive, confocal microscope (LSM 800 with AiryScan; ZEISS, Oberkochen, Germany).

To compare the RQ values of gene expression before and after shear stress was applied to both AVM and normal arterial tissues, we conducted the paired t-test. To compare the values of gene expression between tissue from AVMs and tissue from normal arteries, the Student t-test was used. The normality of data distribution was verified using the Shapiro-Wilk test. We used STATA/MP 16.1 (StataCorp, College Station, TX, USA), to perform all analyses; statistical significance was defined as  $P < 0.05$ .

## RESULTS

The purity of VSMCs was verified by confirming strong expression of smooth muscle actin antibody through IHC. The minimum amount of shear stress needed to deform cells ( $f_{min}$ ) was 4 dyn/cm<sup>2</sup>, whereas the maximum amount ( $f_{max}$ ) just before the cells were destroyed was 11 dyn/cm<sup>2</sup>. Because morphological changes in cells occurred at 4 dyn/cm<sup>2</sup>, 4.5 dyn/cm<sup>2</sup> of shear stress was applied constantly to identify the maximum time ( $t_{max}$ ). VSMCs did not exhibit morphological changes after 48 hours. Therefore,  $t_{max}$  was identified as 48 hours, and 7 dyn/cm<sup>2</sup> of shear stress, which was the median value between  $f_{min}$  and  $f_{max}$ , was applied for 48 hours ( $t_{max}$ ) to all experimental samples (Fig. 1).

Under the shear stress condition, the mean RQ values of *AGP2*, *AQP1*, and *TGFBR1* in normal arteries were  $2.861 \pm 0.822$ ,  $1.972 \pm 0.411$ , and  $1.181 \pm 0.215$ , when compared with the neutral condition. In AVM tissues, these values were  $1.927 \pm 0.528$ ,  $1.291 \pm 0.031$ , and  $2.284 \pm 1.461$ , respectively (Table 2). In the

comparison of AVM tissue with normal arteries, the RQ values of *AGP2*, *AQP1*, and *TGFBR1* were 2.355, 1.295, and 2.117, respectively, in neutral conditions without shear stress and 1.658, 0.879, and 3.329, respectively, under shear stress (Table 3). None of the no-template controls showed a detectable signal (data not shown).

The staining of *AGP2*, *AQP1*, and *TGFBR1* was stronger in the cytoplasm of both normal tissue and AVM tissue under shear stress than in neutral conditions. The staining for all three proteins was also stronger in the cytoplasm of AVM tissue than in normal tissue. In the shear stress environments, staining for *AGP2* and *TGFBR1* was stronger in the AVM tissue than in normal tissue. Regarding the expression of *AQP1*, no significant differences were found in the degree of fluorescence staining in the cytoplasm between the AVM and normal tissues under shear stress (Fig. 2).

## DISCUSSION

We studied the effect of shear stress on angiogenesis with regard to AVMs. The results consistently indicated that shear stress

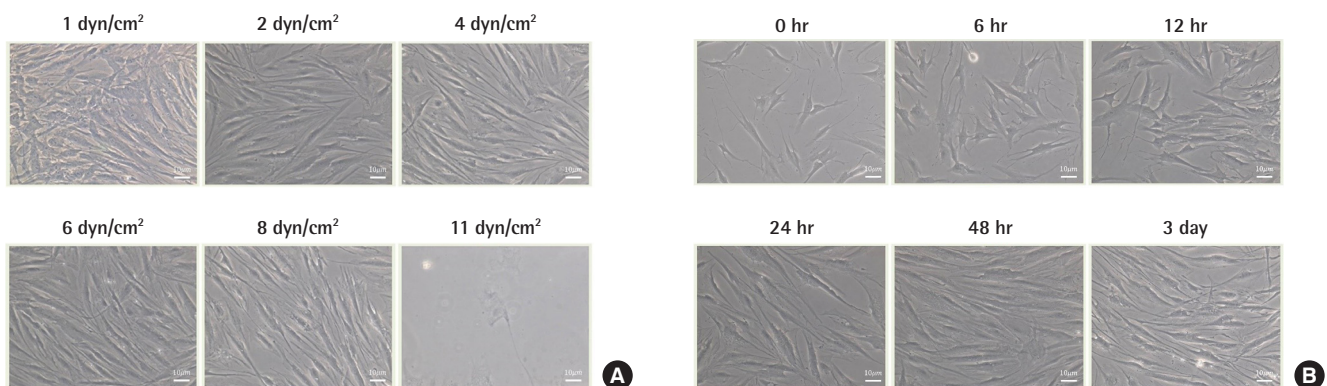
**Table 2.** Relative quantification of gene expression in shear force and neutral environments

Tissue	Gene	Mean RQ	SD	t	P-value
Normal arteries	<i>AGP2</i>	2.861	0.822	-13.439	<0.001 <sup>b)</sup>
	<i>AQP1</i>	1.972	0.411	-12.054	<0.001 <sup>b)</sup>
	<i>TGFBR1</i>	1.181	0.215	-2.411	0.061
AVMs	<i>AGP2</i>	1.927	0.528	-5.097	0.004 <sup>a)</sup>
	<i>AQP1</i>	1.291	0.031	-20.710	<0.001 <sup>b)</sup>
	<i>TGFBR1</i>	2.284	1.461	-4.496	0.006 <sup>a)</sup>

Types of tissues were matched.

*AGP2*, angiotensin-2; *AQP1*, aquaporin-1; *TGFBR1*, transforming growth factor-beta receptor 1; AVMs, arteriovenous malformations; RQ, relative quantity; SD, standard deviation.

<sup>a)</sup> $P < 0.01$ ; <sup>b)</sup> $P < 0.001$ .



**Fig. 1.** Shear stress and time dependent microscopy ( $\times 20$ ). (A) The cell structure began to change at 4 dyn/cm<sup>2</sup>, and cell destruction occurred at 11 dyn/cm<sup>2</sup>. (B) The cells did not exhibit structural changes after 48 hours.



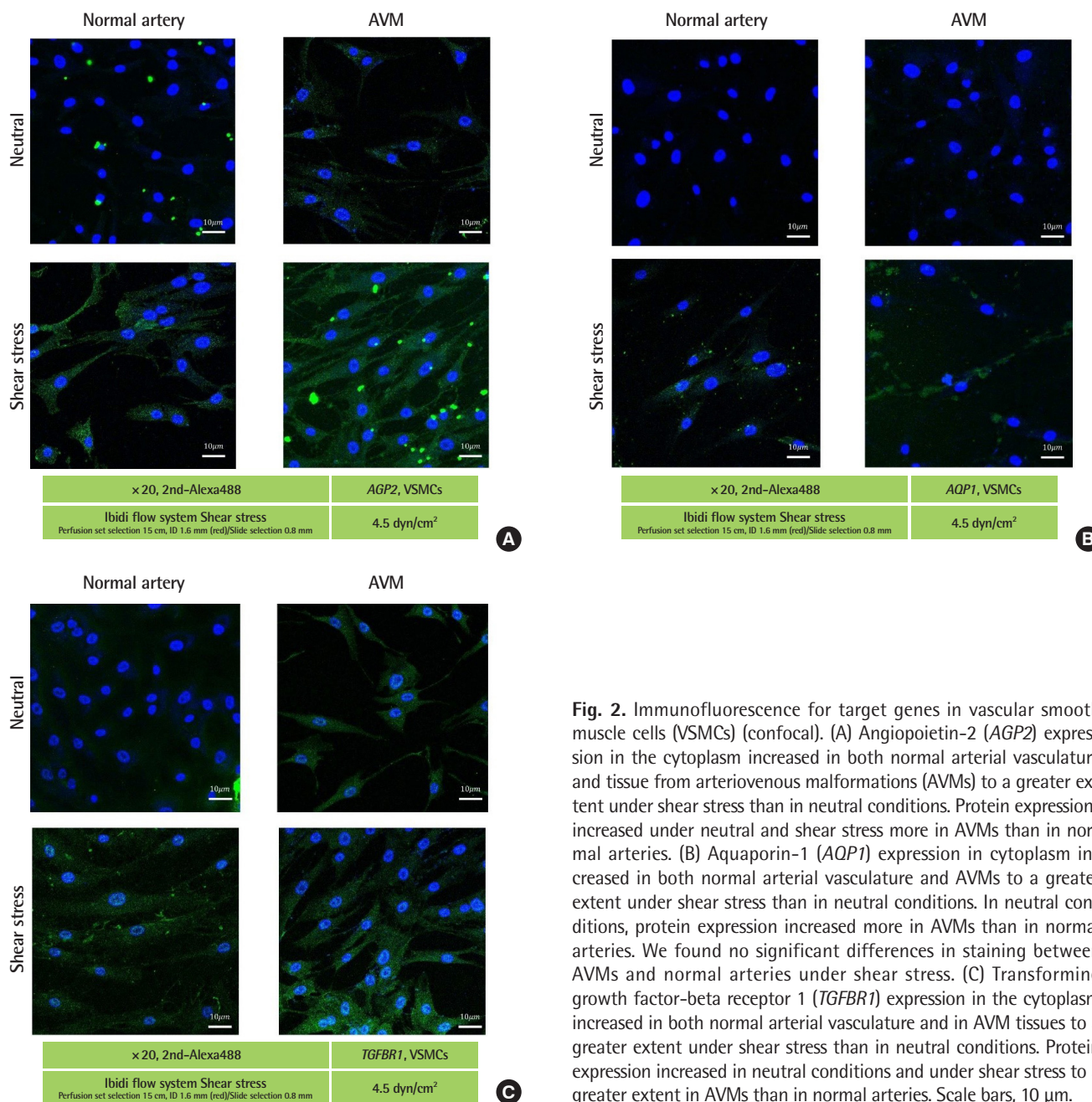
**Table 3.** Relative quantification of gene expression in shear force and neutral environments: comparison between AVMs and normal arteries

<i>f(dCt)</i>		Neutral environment			Shear force state		
		Mean ± SD	RQ	P-value	Mean ± SD	RQ	P-value
<i>AGP2</i>	AVMs	0.749 ± 0.068	2.355	<0.001 <sup>b)</sup>	1.409 ± 0.141	1.658	0.010 <sup>a)</sup>
	Normal arteries	0.318 ± 0.037			0.850 ± 0.013		
<i>AQP1</i>	AVMs	7.149 ± 0.160	1.295	0.018 <sup>a)</sup>	9.231 ± 0.224	0.879	<0.001 <sup>b)</sup>
	Normal arteries	5.520 ± 0.483			10.498 ± 0.115		
<i>TGFBR1</i>	AVMs	30.764 ± 1.361	2.117	0.040 <sup>a)</sup>	55.658 ± 0.963	3.329	<0.001 <sup>b)</sup>
	Normal arteries	14.532 ± 5.931			16.720 ± 1.247		

Types of environments were matched.

AVMs, arteriovenous malformations; *f(dCt)*, function of the value obtained by subtracting the amount of glyceraldehyde 3-phosphate dehydrogenase expression from the cycle threshold (Ct) value of the target gene; *AGP2*, angiotensinogen-converting enzyme 2; *AQP1*, aquaporin-1; *TGFBR1*, transforming growth factor-beta receptor 1; RQ, relative quantity [ $RQ = f(dCt_{AVM}) / f(dCt_{normal})$ ].

<sup>a)</sup>P < 0.05; <sup>b)</sup>P < 0.001.



**Fig. 2.** Immunofluorescence for target genes in vascular smooth muscle cells (VSMCs) (confocal). (A) Angiotensin-2 (*AGP2*) expression in the cytoplasm increased in both normal arterial vasculature and tissue from arteriovenous malformations (AVMs) to a greater extent under shear stress than in neutral conditions. Protein expressions increased under neutral and shear stress more in AVMs than in normal arteries. (B) Aquaporin-1 (*AQP1*) expression in cytoplasm increased in both normal arterial vasculature and AVMs to a greater extent under shear stress than in neutral conditions. In neutral conditions, protein expression increased more in AVMs than in normal arteries. We found no significant differences in staining between AVMs and normal arteries under shear stress. (C) Transforming growth factor-beta receptor 1 (*TGFBR1*) expression in the cytoplasm increased in both normal arterial vasculature and in AVM tissues to a greater extent under shear stress than in neutral conditions. Protein expression increased in neutral conditions and under shear stress to a greater extent in AVMs than in normal arteries. Scale bars, 10 μm.

promotes angiogenesis, which can result in AVMs. The expression of *AGP2*, *AQP1*, and *TGFBR1* was higher under shear stress than in neutral conditions. Furthermore, the expression of *AGP2* and *TGFBR1* was also higher in AVMs than in normal arteries under shear stress. To identify angiogenesis that results in AVMs, we evaluated the expression of these three genes for several reasons. First, because AVMs are related to genetic mutations, we performed a microarray analysis to identify differential gene expression (data not shown). We chose genes that had differential expression results in common with vascular endothelial cells. This choice was influenced by our hypothesis that both VSMCs and endothelial cells are influenced by shear stress and promote angiogenesis. Furthermore, some studies have shown that the products of these three genes play roles in angiogenesis. *AGP2* is a ligand for tyrosine kinase receptor 2 and contributes to angiogenesis [10]. *AGP2* promotes angiogenesis of several vessels, as well as pathological angiogenesis [11,12]. *AQP1* is known as an osmolarity-driven water transporter [13]. Some reports have revealed that *AQP1* was expressed at the time of microvascular proliferation, especially associated with tumors [14-16]. *AQP1* expression is necessary for hypoxia-induced angiogenesis [17]. TGF- $\beta$  also contributes to angiogenesis. One study revealed that TGF- $\beta$  was related to cardiovascular problems and angiogenesis [18]. Other studies demonstrated that dysfunctional TGF- $\beta$  signaling can cause vascular malformations and affect the activation and regulation of angiogenesis [19]. However, under shear stress, the expression of *AQP1* was not higher in AVMs than in normal arteries in this study. This may indicate contradictory results, or perhaps *AQP1* expression may not reflect the angiogenesis that leads to AVMs. In other studies, *AQP1* was related to tumor angiogenesis; however, AVMs are vascular malformations, not tumors.

As mentioned in our previous study, because blood passes through an artery, shear stress is always applied to the arterial wall. This concept is expressed by the Hagen–Poiseuille equation [7]. According to other reports, the Hagen–Poiseuille equation was described as  $WSS = 32 \mu Q / \pi D^3$ , where WSS = wall shear stress (dyn/cm<sup>2</sup>), D = blood vessel diameter (cm), Q = blood flow rate (mL/s), and  $\mu$  = blood viscosity (0.035 poise) [20,21]. If a greater amount of blood passes through vessels, more shear stress is exerted on the vascular walls, according to this equation. VSMCs are one of several types of vascular cells that form the vascular wall. Because blood always flows through vessels as a result of heart contractions in living humans, shear stress always occurs on vascular walls. VSMCs are also affected by shear stress on vascular walls.

In conclusion, this study revealed that the VSMCs of AVMs also showed a high response to oscillatory shear stress, and

VSMCs of AVMs exhibited more angiogenic properties than did those of normal arteries both in neutral conditions and under shear stress. These findings constitute evidence that biomechanical stimulation leads to pathological abnormal angiogenesis, which can result in aggravation of AVMs.

## NOTES

### Conflict of interest

Ho Yun Chung is an editorial board member of the journal but was not involved in the peer reviewer selection, evaluation, or decision process of this article. No other potential conflicts of interest relevant to this article were reported.

### Ethical approval

The study was approved by the Institutional Review Board of Kyungpook National University Hospital (IRB No. 2018-04-020-007) and performed in accordance with the principles of the Declaration of Helsinki. Written informed consent was obtained.

### Author contribution

Conceptualization: S Huh. Data curation: JY Ryu, TH Park, EJ Oh, HM Kim, SJ Lee, J Lee, SY Lee, JY Kim, S Im. Formal analysis: JY Ryu, EJ Oh, HM Kim, SY Lee, S Im. Funding acquisition: HY Chung. Methodology: TH Park, HM Kim, S Im. Project administration: JS Lee, HY Chung. Visualization: JS Lee. Writing - original draft: JY Ryu, TH Park, JS Lee. Writing - review & editing: SJ Lee, J Lee, S Huh, JY Kim, HY Chung. All authors read and approved the final manuscript.

### ORCID

Jeong Yeop Ryu	<a href="https://orcid.org/0000-0003-2812-5051">https://orcid.org/0000-0003-2812-5051</a>
Tae Hyun Park	<a href="https://orcid.org/0000-0002-0373-9156">https://orcid.org/0000-0002-0373-9156</a>
Joon Seok Lee	<a href="https://orcid.org/0000-0002-1580-0487">https://orcid.org/0000-0002-1580-0487</a>
Eun Jung Oh	<a href="https://orcid.org/0000-0002-5139-9870">https://orcid.org/0000-0002-5139-9870</a>
Hyun Mi Kim	<a href="https://orcid.org/0000-0002-0577-4836">https://orcid.org/0000-0002-0577-4836</a>
Seok-Jong Lee	<a href="https://orcid.org/0000-0002-6131-632X">https://orcid.org/0000-0002-6131-632X</a>
Jongmin Lee	<a href="https://orcid.org/0000-0002-4163-913X">https://orcid.org/0000-0002-4163-913X</a>
Sang Yub Lee	<a href="https://orcid.org/0000-0001-8529-8229">https://orcid.org/0000-0001-8529-8229</a>
Seung Huh	<a href="https://orcid.org/0000-0002-0275-4960">https://orcid.org/0000-0002-0275-4960</a>
Ji Yoon Kim	<a href="https://orcid.org/0000-0002-5577-6629">https://orcid.org/0000-0002-5577-6629</a>
Saewon Im	<a href="https://orcid.org/0000-0003-1716-9841">https://orcid.org/0000-0003-1716-9841</a>
Ho Yun Chung	<a href="https://orcid.org/0000-0001-7359-3044">https://orcid.org/0000-0001-7359-3044</a>

## REFERENCES

1. Greene AK, Kim S, Rogers GF, et al. Risk of vascular anom-

- alies with Down syndrome. *Pediatrics* 2008;121:e135-40.
2. Mulliken JB, Glowacki J. Hemangiomas and vascular malformations in infants and children: a classification based on endothelial characteristics. *Plast Reconstr Surg* 1982;69:412-22.
  3. Nozaki T, Nosaka S, Miyazaki O, et al. Syndromes associated with vascular tumors and malformations: a pictorial review. *Radiographics* 2013;33:175-95.
  4. Flemming KD, Brown RD Jr. The natural history of intracranial vascular malformations. In: Winn HR, editor. *Youmans neurological surgery*. 6th ed. Philadelphia: WB Saunders; 2011. p. 4016-23.
  5. Timbang MR, Richter GT. Update on extracranial arteriovenous malformations: a staged multidisciplinary approach. *Semin Pediatr Surg* 2020;29:150965.
  6. Qiao C, Richter GT, Pan W, et al. Extracranial arteriovenous malformations: from bedside to bench. *Mutagenesis* 2019;34:299-306.
  7. Ryu JY, Kim YH, Lee JS, et al. Oscillatory shear stress promotes angiogenic effects in arteriovenous malformations endothelial cells. *Mol Med* 2021;27:31.
  8. Black SM, Grobe A, Mata-Greenwood E, et al. Cyclic stretch increases VEGF expression in pulmonary arterial smooth muscle cells via TGF-1 and reactive oxygen species: a requirement for NAD(P)H oxidase. *Conf Proc IEEE Eng Med Biol Soc* 2004;2004:5053-6.
  9. Anwar MA, Shalhoub J, Lim CS, et al. The effect of pressure-induced mechanical stretch on vascular wall differential gene expression. *J Vasc Res* 2012;49:463-78.
  10. Yin J, Gong G, Sun C, et al. Angiopoietin 2 promotes angiogenesis in tissue-engineered bone and improves repair of bone defects by inducing autophagy. *Biomed Pharmacother* 2018;105:932-9.
  11. Hackett SF, Wiegand S, Yancopoulos G, et al. Angiopoietin-2 plays an important role in retinal angiogenesis. *J Cell Physiol* 2002;192:182-7.
  12. Lefere S, Van de Velde F, Hoorens A, et al. Angiopoietin-2 promotes pathological angiogenesis and is a therapeutic target in murine nonalcoholic fatty liver disease. *Hepatology* 2019;69:1087-104.
  13. Smith BL, Agre P. Erythrocyte Mr 28,000 transmembrane protein exists as a multisubunit oligomer similar to channel proteins. *J Biol Chem* 1991;266:6407-15.
  14. Endo M, Jain RK, Witwer B, et al. Water channel (aquaporin 1) expression and distribution in mammary carcinomas and glioblastomas. *Microvasc Res* 1999;58:89-98.
  15. Saadoun S, Papadopoulos MC, Davies DC, et al. Increased aquaporin 1 water channel expression in human brain tumours. *Br J Cancer* 2002;87:621-3.
  16. Vacca A, Frigeri A, Ribatti D, et al. Microvessel overexpression of aquaporin 1 parallels bone marrow angiogenesis in patients with active multiple myeloma. *Br J Haematol* 2001;113:415-21.
  17. Kaneko K, Yagui K, Tanaka A, et al. Aquaporin 1 is required for hypoxia-inducible angiogenesis in human retinal vascular endothelial cells. *Microvasc Res* 2008;75:297-301.
  18. ten Dijke P, Arthur HM. Extracellular control of TGFbeta signalling in vascular development and disease. *Nat Rev Mol Cell Biol* 2007;8:857-69.
  19. Goumans MJ, Liu Z, ten Dijke P. TGF-beta signaling in vascular biology and dysfunction. *Cell Res* 2009;19:116-27.
  20. Zhao X, Zhao M, Amin-Hanjani S, et al. Wall shear stress in major cerebral arteries as a function of age and gender: a study of 301 healthy volunteers. *J Neuroimaging* 2015;25:403-7.
  21. Alaraj A, Shakur SF, Amin-Hanjani S, et al. Changes in wall shear stress of cerebral arteriovenous malformation feeder arteries after embolization and surgery. *Stroke* 2015;46:1216-20.