



ARTICLE

Isolation of *Lactococcus lactis* ssp. *cremoris* LRCC5306 and Optimization of Diacetyl Production Conditions for Manufacturing Sour Cream

Yunsik Kim^{1,†}, Seokmin Yoon^{2,†}, Hyejung Shin³, Miyoun Jo², Sunmin Lee², and Sae-hun Kim^{3,*}

¹Department of Biosystems and Biotechnology, College of Life Science and Biotechnology, Korea University, Seoul 02841, Korea

²Food-Biotech Team, Division of Basic Research, Lotte R&D Center, Seoul 07594, Korea

³Department of Food Bioscience and Technology, College of Life Science and Biotechnology, Korea University, Seoul 02841, Korea

OPEN ACCESS

Received September 7, 2020

Revised October 26, 2020

Accepted January 23, 2021

*Corresponding author : Sae-hun Kim
Department of Food Bioscience and Technology, College of Life Science and Biotechnology, Korea University, Seoul 02841, Korea
Tel: +82-2-3290-3055
Fax: +82-2-3290-3506
E-mail: saehkim@korea.ac.kr

*ORCID
Yunsik Kim
<https://orcid.org/0000-0001-8608-4951>
Seokmin Yoon
<https://orcid.org/0000-0002-7004-5947>
Hyejung Shin
<https://orcid.org/0000-0003-2571-6294>
Miyoun Jo
<https://orcid.org/0000-0001-6248-6091>
Sunmin Lee
<https://orcid.org/0000-0002-8438-3365>
Sae-hun Kim
<https://orcid.org/0000-0002-0990-2268>

† These authors contributed equally to this work.

Abstract The sensory properties and flavor of sour cream are important factors that influence consumer acceptability. The present study aimed to isolate lactic acid bacteria with excellent diacetyl production ability and to optimize the fermentation conditions for sour cream manufacture. *Lactococcus lactis* ssp. *cremoris* was isolated as a lactic acid bacterium derived from raw milk. This strain showed the greatest diacetyl production among other strains and was named LRCC5306. Various culture conditions were optimized to improve the diacetyl production of LRCC5306. The highest diacetyl production was found to be at 105.04±2.06 mg/L, when 0.2% citric acid and 0.001% Fe²⁺ were added and cultured at 20°C for 15 h. Based on the optimal cultivation conditions, sour cream was manufactured using LRCC5306, with a viable count of 1.04×10⁸ CFU/g and a diacetyl concentration of 106.56±1.53 mg/g. The electronic tongue system was used to compare the sensory properties of the sour cream; the fermented product exhibited sweetness and saltiness which was similar to that of an imported commercial product, but with slightly reduced bitterness and a significantly greater degree of sour taste. Therefore, our study shows that if cream is fermented using the LRCC5306, it is possible to produce sour cream with greatly improved sensory attractiveness, resulting in increased acceptance by consumers. Since this sour cream has a higher viable count of lactic acid bacteria, it is also anticipated that it will have a better probiotic effect.

Keywords *Lactococcus lactis cremoris*, sour cream, diacetyl, process optimization

Introduction

Sour cream, also known as fermented cream, is a traditional dairy product that is consumed in several countries and has various applications. Sour cream is very popular in North America, Mexico, and Northern and Eastern Europe; it is commonly added to

stews and other meat dishes, or is used as a topping for fish, vegetables, salads, and some cakes. It can also be employed in the baking process for cakes, cookies, biscuits, and scones (Champagne and Côté, 1987; Goddik, 2012).

In addition to its unique flavor, sour cream possesses high nutritional value because it contains milk-derived proteins and fats. Sour butter, which is made by subjecting sour cream to various processes, including churning, is popular despite its short shelf life. Sour cream is categorized as follows by its fat content and in accordance with the specifications of the United States Department of Agriculture (USDA): sour cream, fat $\geq 18\%$; light sour cream, fat $\leq 9\%$; low-fat sour cream, fat $\leq 6\%$; and non-fat sour cream, fat $\leq 1\%$ (Champagne and Côté, 1987; Narvhus et al., 2019; USDA, 2000).

Sour cream has a sour but soft taste, with a tinge of sweet and savory flavors and is slightly viscous. One of the components of sour cream that exerts a strong influence on its flavor is diacetyl. Diacetyl is one of the major compounds that is generated when milk-based ingredients are subjected to lactic acid bacteria (LAB) fermentation, and which produces a decisive effect on the quality of fermented products and their acceptance by consumers (Monnet et al., 2000; Moyane and Jideani, 2013; Rincon-Delgadillo et al., 2012; Shepard et al., 2013). Aromatic compounds generated during fermentation are typically comprised of volatile organic acids and carbonyl compounds including diacetyl, which is a volatile carbonyl compound. In LAB, diacetyl is generated via the citrate fermentation pathway. Citrate, which is a precursor in this pathway, contributes to the stability of diacetyl that accumulates after fermentation (Dorau et al., 2019; Ji et al., 2015; Kaneko et al., 1990). Therefore, citrate-utilizing LAB, such as *Lactobacillus*, *Lactococcus lactis* subsp. *lactis*, and *Leuconostoc* sp., are frequently employed in the manufacture of sour cream (Bassit et al., 1995; Boumerdassi et al., 1996; Khemariya et al., 2017; Maurad and Meriem, 2008).

Increasing interest in foods that improve health and well-being life have spawned an interest in ‘probiotics’ and ‘fermentation’ worldwide (Asghar et al., 2017). Probiotics refer to living microorganisms that provide health benefits by improving the balance of gut microbes in the host. Currently, well-known probiotic bacterial strains include the genus *Bifidobacterium*, the genus *Lactobacillus*, the genus *Lactococcus*, the genus *Enterococcus*, *Clostridium butyricum*, and *Bacillus polyfermenticus*. Probiotics have been reported to produce beneficial effects, such as improving gut health, immune modulation, antibacterial and antiviral effects (Gill et al., 2000; Lim et al., 2018). Therefore, there are growing expectations regarding the nutritional value and health functional effects of sour cream that has been fermented using probiotic LAB.

In comparison with Europe, one of the greatest challenges for sour cream manufacturing technology in Korea is the failure to satisfy consumers’ demands due to insufficient low sensory profiles on account of low diacetyl concentrations. Diacetyl rapidly increases during the fermentation of cream and the fermented flavor becomes weaker as the diacetyl is converted to acetoin. There is additional loss of diacetyl during post-fermentation processes such as drying. To provide an excellent fermented flavor, it is essential to use LAB producing a high concentration of diacetyl. It is therefore important to establish fermentation conditions that allow LAB to produce diacetyl optimally.

In the present study, it was aimed to isolate LAB with probiotic activity, with excellent fermentation ability for cream, and optimal sensory properties in the manufacture of sour cream. In addition, by measuring the concentration of diacetyl produced while varying the LAB culture conditions, optimal conditions for diacetyl production were aimed to be established.

Materials and Methods

Screening of diacetyl-producing bacterial strains

To isolate bacterial strains, unsterilized raw milk that had been milked within the last 2 days at the Lotte Foods Pasteur

Factory (Hoengseong, Korea) was collected. After performing serial dilutions with sterilized saline, 0.1 mL samples of the diluted milk were obtained. The diluted milk was spread onto solid MRS medium containing 0.002% (w/w) of bromocresol purple (BCP) and 1.5% (w/w) of agar. After cultivation for 48 h in an incubator at a constant temperature of 37°C, colonies that displayed a yellow ring were isolated.

The isolated strains were inoculated onto MRS agar and activated for 24 h at 30°C, and then inoculated into 10 mL of MRS broth (Difco, Becton, NJ, USA) to produce the seed culture. The seed culture broth was inoculated at a concentration of 1% into MRS broth containing 1 g/L of citrate. The broth was incubated for 24 h at 30°C (Bassit et al., 1995; Hassan et al., 2017), and centrifuged (10,000×g, 10 min). The concentrations of α -acetolactate and diacetyl in the supernatant were measured using a gas chromatography-electron capture detector (GC-ECD, Agilent, Santa Clara, CA, USA). *Lactobacillus casei* ATCC393 (hereafter, referred to as LC393) obtained from the American Type Culture Collection (ATCC, Manassas, VA, USA) (Hegazi and Abo-Elnaga, 1980) was used as a control to compare diacetyl production.

Bacterial strain identification

The API 50 CHL kit (Biomerieux, La Balme-les-Grottes, France) was used to measure sugar utilization and rapid identification of the isolated bacterial strains. The API 50 CHL kit was inoculated with cultured colonies on MRS agar, and the variation of color (yellow) in each was measured after culturing for 24 and 48 h at 37°C, respectively. The results were used to identify bacterial strains using Biomerieux DB (<https://apiweb.biomerieux.com>).

In addition, genetic identification was performed by analyzing 16s rDNA. After extracting genomic DNA using a genomic DNA preparation kit (Promega, Madison, WI, USA), PCR was performed with the universal primers 27F (5'-AGA GTT TGA TCC TGG CTC AG-3') and 1492R (5'-TAC GGY TAC CTT GTT ACG ACT T-3') to amplify the 16s rDNA gene (Lim et al., 2018). The PCR products were purified using the QIA quick PCR kit (QIAGEN, USA), nucleotide sequencing was outsourced to Macrogen (Seoul, Korea), and the sequences were compared with a DB using BLAST at GenBank on the NCBI website (<https://blast.ncbi.nlm.nih.gov/Blast.cgi>).

Optimization of conditions for diacetyl production

To optimize the cultivation temperature for diacetyl production, seed culture for the isolated strain or control strain (LC393) was inoculated into 100 mL of MRS broth containing 0.1% citrate and incubated at 10°C, 20°C, 25°C, 30°C, or 37°C. To identify the optimal citrate concentration, 0%, 0.1%, 0.2%, 0.3%, 0.5%, 1%, 2%, or 3% citrate was added to the MRS broth, and the diacetyl concentration was measured after cultivation for 15 h at 20°C. To investigate the effects of metal ions, 0.01% of iron (Fe^{2+}), magnesium (Mg^{2+}), manganese (Mn^{2+}), or calcium (Ca^{2+}) was added to the culture broth. The concentrations of metal ion were treated at 0.0001%, 0.001%, 0.01%, 0.1%, or 1% for highest diacetyl production. The optimal cultivation time was investigated based on the optimal temperature and citrate concentration identified above.

In each condition, culture broth was collected after cultivation and centrifuged (12,000×g, 10 min), and GC-ECD (Agilent 7890A with Electron Capture Detector) was used to measure the diacetyl concentration. To enumerate viable cells of isolated strain, some samples were serially diluted and spread on MRS agar and incubated.

Manufacture of sour cream

After activating the isolated strain in MRS agar, 2–3 colonies were inoculated into 30 mL of MRS broth and cultured for 24 h at 37°C. This seed culture broth was then centrifuged (8,000×g, 10 min), the supernatant was removed, and 10 mL of 0.1

M phosphate buffer (pH 6.8) was added to suspend the colonies. The same step was repeated thrice; after removing the final supernatant, 5 mL of 0.1 M phosphate buffer was added to suspend the bacterial colonies to generate the final seed culture for sour cream manufacture. The commercially whipped creams, a product from Lotte Foods, was purchased and used (Pasteur Fresh Cream, Lotte Foods, Korea), 0.2 g of citrate, and 1 mL of seed culture broth were added to 78.8 g of cream and 20 g of skim milk, and the mixture was incubated for 15 h at 20°C. After cultivation, 1 g of cream was collected and serially diluted using sterile saline, 100 µL of the appropriate dilution was collected and spread onto MRS agar for measuring the viable cell count. The diacetyl concentration was analyzed using GC-ECD. In addition, an electronic tongue (Intelligent Sensor Technology, SA402B, Japan) and GC/MS (Agilent Technologies, 5977A) were used to compare sensory and flavor components in the cream before and after fermentation. Unfermented imported commercial cream, used as a control group, was compared with the cream fermented with the isolated strain in the present study.

Statistical analysis

All data are presented as means (\pm SD) of at least 3 independent experiments; each experiment had 3 replicates of each sample. Data were analyzed statistically using IBM SPSS Statistics software version 25.0 (IBM, Armonk, NY, USA). The statistical difference between the mean values of test groups was analyzed by using one-way analysis of variance (ANOVA). Statistical significance was defined as $p=0.05$. Multiple comparisons between different groups were assessed using Duncan's test.

Results and Discussion

Screening of diacetyl-producing bacterial strains

A total 84 of LAB were isolated from 21 types of raw milk (data not shown). Among the isolated LABs, *Lactobacillus casei* LC5229 (hereafter referred to as LC5229), *Lactococcus lactis* LL5301 (hereafter referred to as LL5301), *Lactococcus lactis* LL5306 (hereafter referred to as LL5306), and *Lactobacillus casei* LC5316 (hereafter referred to as LC5316) demonstrated the highest levels of diacetyl production (Table 1). In particular, LL5306 showed the highest level of diacetyl production (13.20 ± 0.54 mg/L). Therefore, LL5306 was selected as the favorable strain for the sour cream manufacturing.

Monnet et al. (2000) reported that 0.5–6 mM diacetyl was produced by *Lactococcus lactis* subsp. *lactis* MR3-T7, in which nitrosoguanidine was used to induce random mutations. Although this corresponds to a concentration of 0.04–0.52 mg/L, the conditions of the medium varied and a higher concentration of diacetyl was produced when yeast extract or catalase was added. According to Guo et al. (2015), when yogurt was fermented by the *Lactococcus lactis* DX strain, 22.39 mg/L of

Table 1. Diacetyl production of the isolated LAB

Strain	Diacetyl (mg/L)
<i>L. casei</i> ATCC393	10.97 \pm 0.55 ^a
<i>L. lactis cremoris</i> LL5306	13.20 \pm 0.54 ^b
<i>L. casei</i> LC5229	10.70 \pm 0.35 ^a
<i>L. lactis cremoris</i> LL5301	8.13 \pm 0.66 ^b
<i>L. casei</i> LC5316	7.90 \pm 0.75 ^b

Results are expressed as mean \pm SE (n=3).

L. casei ATCC393 was used as the reference strain. The initial concentration of diacetyl was 0.

^{a,b} Means in the same column with different lowercase superscript letters are significantly different at $p<0.05$.

LAB, lactic acid bacteria.

diacetyl was produced and 2–4 mg/L was produced when buttermilk was fermented. Thus, the similar *Lactococcus lactis* strain displayed prominent differences in diacetyl production, which depended on each strain and the respective culture conditions.

Bacterial strain identification

Table 2 shows the results of the analysis with the API 50 CHL that was used to investigate sugar utilization by the isolated strain, LL5306. As shown in the results in Table 2, LL5306 utilized galactose, glucose, fructose, mannose, raffinose, maltose, cellobiose, lactose, sucrose, sugar alcohols such as mannitol and sorbitol, esculin, amygdalin, and salicin. However, LL5306 did not utilize glycerol, D-xylose, L-xylose, inulin, or starch.

The sugar utilization results from our study, when compared with the observations on the API website (www.apweb.biomerieux.com), showed similarity to those of *Lactococcus lactis* ssp. *lactis* reference strain 1 (87.7% ID, T index 0.94); the only difference seen was the utilization of amygdalin (75%). The results were also similar to those of *Lactococcus lactis* ssp. *lactis* reference strain 2 (12.1% ID, T index 0.73), whereby utilization of D-xylose and xylitol were 1% and 20% different, respectively.

LL5306 demonstrates similarity to *Lactobacillus plantarum*; however the ID and T index were only 0.1% and 0.54%, respectively. Furthermore, there were considerable differences in the utilization of D-xylose, amygdalin, and trehalose, at 1%,

Table 2. Carbohydrate fermentation pattern analysis of LL5306

Sugar	Result ¹⁾	Sugar	Result ¹⁾	Sugar	Result ¹⁾
Control	–	α -Methyl-D-mannoside	–	Lyxose	–
Glycerol	–	α -Methyl-D-glucoside	–	Tagatose	–
Erythritol	–	N-Acetyl-glucosamine	+	D-Fucose	–
D-Arabinose	–	Amygdalin	+	L-Fucose	–
L-Arabinose	+	Arbutin	+	D-Arabitol	–
Ribose	–	Esculin	+	L-Arabitol	–
D-Xylose	–	Salicin	+	Gluconate	–
L-Xylose	–	Cellobiose	+	2-Ketone-gluconate	–
Adonitol	–	Maltose	+	5-Keto-gluconate	–
β -Methyl-D-Xylose	–	Lactose	+		
Galactose	+	Melibiose	+		
Glucose	+	Sucrose	+		
Fructose	+	Trehalose	+		
Mannose	+	Inulin	–		
Sorbose	–	Melezitose	+		
Rhamnose	–	Raffinose	+		
Dulcitol	–	Starch	–		
Inositol	–	Glycogen	–		
Mannitol	+	Gentiobiose	+		
Sorbitol	+	Turanose	+		

¹⁾ The results were compared against the database from Biomerieux at <https://apiweb.biomerieux.com>.

83%, and 1%, respectively. After using PCR to amplify the 16s rDNA gene of LL5306, sequencing of the 1,335 bp was outsourced to Macrogen (Seoul, Korea) and the sequence was used in a homology search with the NCBI BLASTN program (<http://blast.ncbi.nlm.gov>). Following a comparison with the GenBank database and a homology search with the BLASTN program, a phylogenetic tree was constructed using the neighbor-joining method (Fig. 1). The results from this analysis identified the strain as *Lactobacillus lactis* ssp. *cremoris* and showed the closest homology with *Lactococcus lactis* subsp. *cremoris* strain 3941. There were also similarities to *Lactococcus lactis* strain, but not as much similarity as to *Lactococcus lactis* subsp. *cremoris*. Hence, the isolated strain LL5306 was named *Lactococcus lactis cremoris* LRCC5306 (Lotte R&D Culture Collection).

Optimization of diacetyl production conditions

Table 3 shows the results of diacetyl production with various cultivation temperatures. As shown, the optimal culture temperature for production of diacetyl by LRCC5306 was 20°C–25°C, which is similar to previous research which showed that other *Lactococcus lactis* strains generally show superior secretion of metabolic products at low temperatures of $\leq 25^\circ\text{C}$. Diacetyl production was significantly different between 20°C and 25°C; therefore, 20°C was selected as the optimal temperature. Similar to LRCC5306, ATCC373 also showed optimal diacetyl production at 20°C, but showed lower diacetyl production than LRCC5306 at temperatures other than 37°C.

Bassit et al. (1995) investigated the optimal temperature for diacetyl production by *Lactococcus lactis* subsp. *lactis* biovar *diacetylacti* and reported that 0.30 mM diacetyl was produced at 18°C and 0.18 mM diacetyl at 30°C, which represents a 1.7-fold difference. The activity of diacetyl reductase, an enzyme that reduces diacetyl to acetoin, was also investigated and was found to be significantly lower at 18°C (2.31 units) than at 30°C (3.29 units). Therefore, it was assumed that lower temperatures inhibit the degradation of diacetyl to acetoin, thereby resulting in a higher concentration of diacetyl remaining in the final fermented product. In contrast, Guo et al. (2015) reported that when yogurt was fermented with *Lactococcus lactis* DX at 37°C, a diacetyl concentration of 22.39 mg/L was produced, which indicates that even the same strain can manifest differences in diacetyl production.

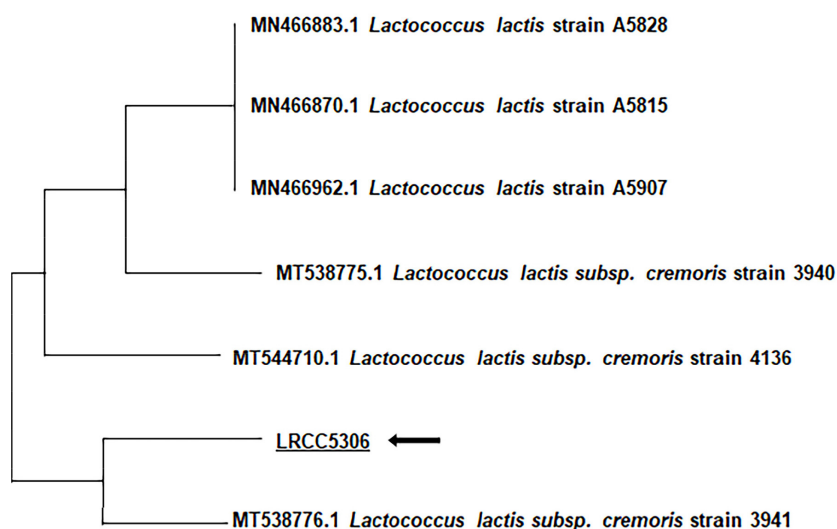


Fig. 1. Phylogenetic tree of *Lactococcus lactis* ssp. *cremoris* LRCC5306. The analyzed sequences were compared against the GenBank database on the NCBI website using BLAST analysis (<https://blast.ncbi.nlm.nih.gov/Blast.cgi>).

Table 3. Comparison of diacetyl production at different culture temperatures

Temperature (°C)	Diacetyl (mg/L)	
	LRCC5306	ATCC393
0	0.0	0.0
10	0.0	0.0
20	20.64±0.51 ^d	15.41±0.21 ^c
25	18.32±0.64 ^c	10.52±0.16 ^a
30	14.25±0.13 ^b	10.96±0.15 ^a
37	11.48±0.16 ^a	11.61±0.29 ^b

Results are expressed as mean±SE (n=3).

L. casei ATCC393 was used as the reference strain. The initial concentration of diacetyl was 0.

^{a-d} Means in the same column with different lowercase superscript letters are significantly different at p<0.05.

Table 4 shows the effects of added citrate concentrations on diacetyl during cultivation. As shown in the results, there was a remarkable difference in diacetyl production when citrate was added compared to the untreated samples. Compared to the diacetyl concentration of 19.85±0.38 mg/L in the absence of citrate, almost twice as much diacetyl was produced when citrate was added. However, there was no correlation between the citrate concentration and the diacetyl production. Additionally, there was a slight decrease in diacetyl concentration as the added citrate concentration increased to 2% and above. Therefore, based on the results presented in Table 4, 0.2% was selected as the optimal and economical citrate concentration, which produced the highest diacetyl concentration.

Fig. 2 shows the diacetyl production when different metal ions were added. As shown in the graph, the highest concentration of diacetyl (66.30±2.23 mg/L) was produced in the group to which Fe²⁺ ions were added. Additionally, 62.64±1.76 mg/L of diacetyl was produced in the group with added Mn²⁺ ions; however, there was no statistically significant difference between Fe²⁺ and Mn²⁺ (p=0.20). While the addition of Mg²⁺ or Ca²⁺ ions showed that there was a trend for a slight increase in diacetyl concentration compared to the treatment with no added metal ions, the p-value was higher than 0.05, indicating that there was no statistically significant difference. Therefore, Fe²⁺ and Mn²⁺ ions were selected as the optimal metal ions for diacetyl production.

Table 4. Production of diacetyl with the addition of different concentrations of citrate

Citrate (% w/v)	Diacetyl (mg/L)
0	19.85±0.38
0.1	40.48±0.32 ^b
0.2	43.26±0.44 ^b
0.3	42.75±1.41 ^b
0.5	43.01±0.59 ^b
1.0	42.85±1.43 ^b
2.0	34.43±1.64 ^a
3.0	35.20±1.05 ^a

Results are expressed as mean±SE (n=3).

MRS broth was used as the basal medium, citrate was added before sterilization (autoclave, 121°C, 15 min). The initial concentration of diacetyl was 0.

^{a,b} Means in the same column with different lowercase superscript letters are significantly different at p<0.05.

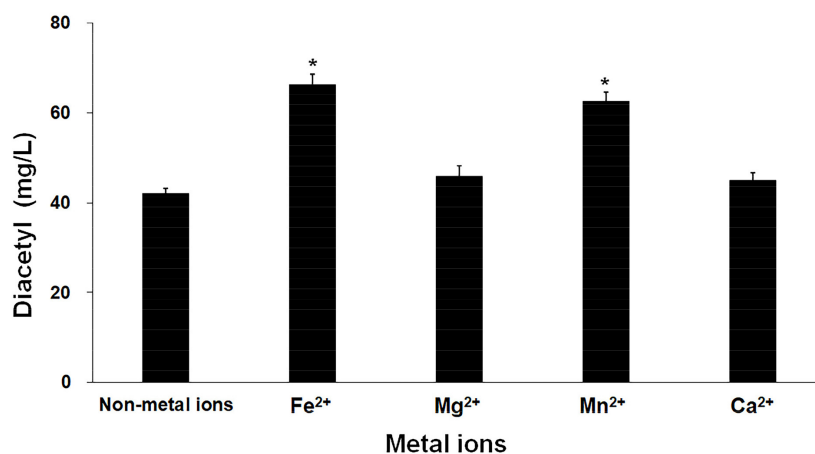


Fig. 2. Diacetyl production by LRCC5306 with the addition of different types of metal ions. MRS broth was used as basal medium, metal ions were added before sterilization (autoclave, 121°C, 15 min). The initial concentration of diacetyl was 0. Results are expressed as mean±SE (n=3). * Means in the same column with different lowercase superscript letters are significantly different at p<0.05.

Table 5 shows the comparison of diacetyl production when different concentrations of Fe²⁺ or Mn²⁺ ions were added. Neither Fe²⁺ nor Mn²⁺ ions at a concentration of 0.0001% resulted in a significant increase in diacetyl concentration, compared to the treatment with no added metal ions; however, the addition of Fe²⁺ or Mn²⁺ ions ≥0.001% resulted in a significant increase in diacetyl. As the concentration of Fe²⁺ or Mn²⁺ ions increased further, however, there was almost no significant difference in the concentration range of 0.001% and 1.0%. Based on these results, and considering cost-effectiveness, it was determined that the optimal concentration of metal ions was 0.001%.

According to the mechanisms of diacetyl production, the enzyme involved in producing diacetyl from the precursor α-acetolactate is known to be α-acetolactate decarboxylase (Boumerdassi et al., 1996; Ji et al., 2015; Guo et al., 2015). According to Guo et al. (2015), when metal ions were added to a *Lactococcus lactis* DX cultivation, the relative activity of α-acetolactate decarboxylase was increased; an elevation in activity by 110%, 250%, 300%, and 320% was reported for the addition of Mn²⁺, Fe²⁺, Zn²⁺, and Mg²⁺ ions, respectively. Kaneko et al. (1990) also reported an increase in diacetyl production when Cu²⁺ was added to a *Lactococcus lactis* subsp. *lactis* 3022 cultivation. Therefore, taken together, the results from previous studies provide evidence that diacetyl production increases with the addition of an appropriate amount of suitable

Table 5. Comparison of diacetyl production with the addition of different concentrations of Fe²⁺ or Mn²⁺ ions

Concentration (% w/v)	Diacetyl from LRCC5306 (mg/L)	
	Iron	Manganese
0	42.28±1.58	43.66±2.09
0.0001	43.03±1.76	42.18±1.76
0.001	66.58±2.73 ^a	62.25±0.78 ^a
0.01	66.52±2.82 ^a	62.96±2.12 ^a
0.1	63.60±1.45 ^a	61.25±1.20 ^a
1.0	65.46±2.34 ^a	60.83±2.42 ^a

Results are expressed as mean±SE (n=3).

MRS broth was used as the basal medium, citrate was added before sterilization (autoclave, 121°C, 15 min). The initial concentration of diacetyl was 0.

^a Means in the same column with different lowercase superscript letters are significantly different at p<0.05.

metal ions for a given bacterial strain. In the case of LRCC 5306, 0.001% of Fe^{2+} was selected as the optimal metal ion.

Fig. 3 shows variation in diacetyl production with cultivation time. As shown in the graph, diacetyl production by LRCC5306 was highest after 14–16 h but decreased thereafter. In particular, the diacetyl concentration of 105.04 ± 2.06 mg/L at 15 h was statistically significant. Therefore, the optimal cultivation time for diacetyl production by LRCC5306 was determined to be 15 h.

Considering the metabolic mechanisms of diacetyl-producing LAB, α -acetolactate can be produced from pyruvate, which was generated from glucose via glycolysis. The generated α -acetolactate is then converted to diacetyl (Dorau et al., 2019). However, the generated diacetyl is converted to acetoin, depending on several conditions such as the storage time and storage temperature. Therefore, while it is important to produce a high concentration of diacetyl at the end of fermentation, it is also extremely important to optimize the cultivation time that produces the highest concentration of diacetyl (Bondarchuk, 2018).

Boumerdassi et al. (1996) reported that 0.5 mM diacetyl was produced after 8–10 h of culturing *Lactococcus lactis* ssp. *lactis* CNRZ 483 when the oxygen concentration was modulated. In addition, Gebreselassie et al. (2016) using buttermilk collected from a farm in northern Ethiopia reported that the mean diacetyl concentration after 32 h and 48 h of fermentation was 1.32 and 2.97 mg/kg, respectively, and that the highest diacetyl concentration was 7.76 mg/kg.

The results from our study of the growth of LRCC5306 with cultivation time (Fig. 3) showed that the viable cells gradually increased with the passage of time, peaked at 23 h, and slowly decreased thereafter. Thus, there was no correlation between the time of highest diacetyl production at 15 h and the highest viable cells. This indicated that diacetyl is a primarily produced metabolite in the exponential phase of the microbial growth curve. The exact underlying mechanisms need to be examined in further studies.

Manufactured sour cream profile

The viable cells in actual fermented cream, produced by inoculating LRCC5306 culture broth into commercial cream as the seed, were 1.04×10^8 CFU/g, and the diacetyl concentration was 106.56 ± 1.53 mg/g. Fig. 4 shows the results of sensory properties of sour cream using the electronic tongue system. The sensory components of commercial cream before fermentation were set as the zero-base. In these data, imported commercial sour cream demonstrated a slightly more sour

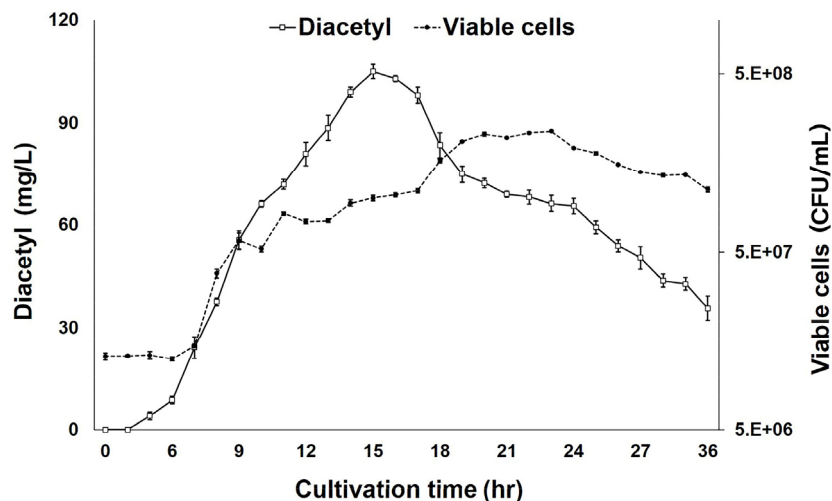


Fig. 3. Diacetyl production and viable count by LRCC5306 cultivation time. MRS broth was used as basal medium; 0.1% of citrate and 0.001% of Fe^{2+} were added before sterilization (autoclave, 121°C, 15 min). Results are expressed as mean \pm SE (n=3).

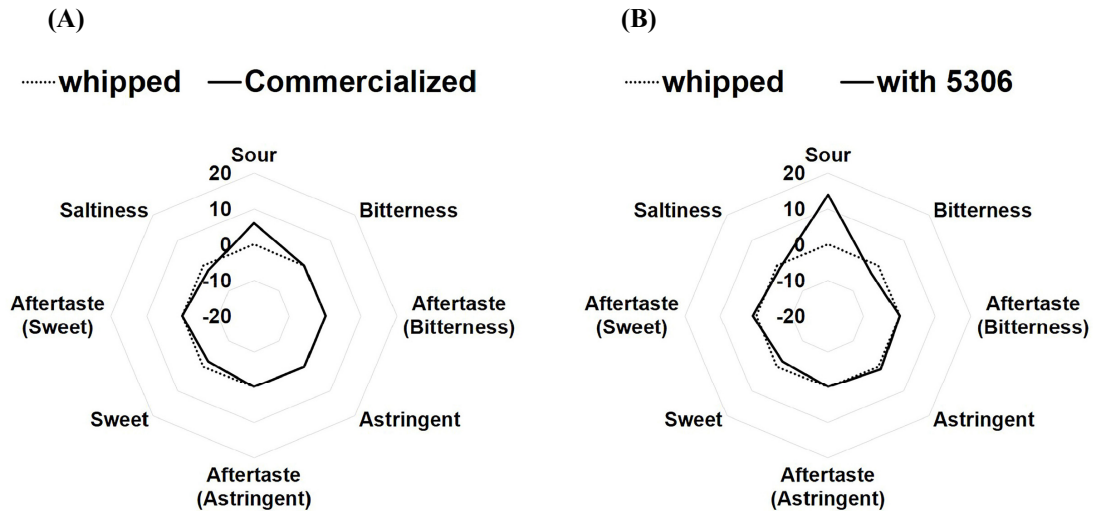


Fig. 4. Comparison of taste components between unfermented cream and LRCC5306 fermented cream (electronic tongue).

taste than whipped cream, but slightly lower sweetness and saltiness. It was also found that the cream fermented with LRCC5306 showed a similar sweetness and saltiness as the imported product, but a slightly lower bitterness, as well as a significantly increased sour taste.

Fig. 5 shows the results of comparing flavor components between commercial whipped cream (unfermented), imported commercial sour cream, and sour cream with LRCC5306. The analyzed flavor components by GC/MS were grouped into six flavor categories. In the whipped cream, the strongest characteristic was ‘sweet’; it has very few components in other flavor categories. In particular, there were almost no buttery, acidic, or cheesy flavor components. In contrast, the imported sour cream and the sour cream with LRCC5306 both showed various changes in flavor components, with a particular increase in buttery and acidic characteristics. Cheesy, milky, and green characteristics demonstrated slight differences between the

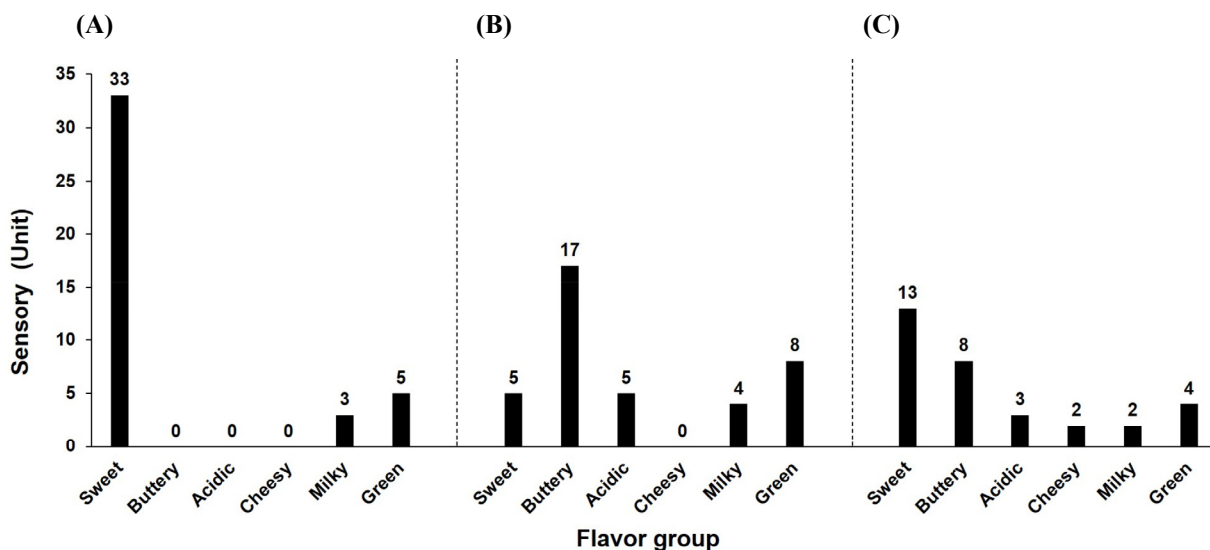


Fig. 5. Comparison of flavor components with unfermented cream and a commercially available imported cream product. (A) Whipped cream before fermentation, (B) sour cream with LRCC5306, (C) imported commercial sour cream. Results are expressed as unit-based sum of calculated total area from GC/MS.

imported product and the sour cream with LRCC5306. Notably, the sour cream with LRCC5306 possessed almost no cheesy components but had somewhat stronger milky and green components.

Meunier-Goddik (2004) described sour cream as a product that includes the taste of lactic acid and a balanced, pleasant, buttery-like (diacetyl) flavor. Meanwhile, Shepard et al. (2013) conducted a consumer acceptance test for 32 sour creams in the US based on the results of sensory evaluation and analysis of organic acids and volatile compounds. The flavor with the highest consumer preference was ‘butter-like’ and the active compounds in this flavor included diacetyl and acetoin.

Sour cream with LRCC5306 produced more various flavors and greatly enhanced the buttery flavor that consumers expect from sour cream, compared to the unfermented whipped cream or the imported product. Therefore, it is anticipated that sour cream produced with the LRCC5306 strain could generate a high degree of acceptability among consumers.

LAB must survive the extreme physiological conditions of the upper gastrointestinal tract to exhibit its probiotic function effectively in the intestines. *Lactococcus lactis* species are generally considered probiotics. We found the viability of LRCC5306 in the presence of hostile gastric and bile acids to be 81 Log % and 96 Log % (% of Log CFU/g), respectively (data not shown).

Further, efficacy studies of sour cream with LRCC5306 as a probiotic on intestinal health are pending. Such studies are important in establishing health implications of sour cream in conditions such as constipation, diarrhea. We consider clinical experiments in animals and humans to render noteworthy results in this regard.

Conclusion

Sour cream has possesses high nutritional value because it contains milk-derived proteins and fats, but it takes a lot of effort to improve its sensory. There is additional loss of diacetyl during fermentation and post-fermentation processes. Also it is very establish fermentation conditions that allow LAB to produce diacetyl optimally.

In the present study, various fermentation conditions were optimized to augment diacetyl concentration using *Lactococcus lactis* ssp. *cremoris* LRCC5306. In particular, adding the appropriate concentration of citrate and Fe²⁺ greatly increased diacetyl production. This effect is thought to be mediated by increased α -acetolactate decarboxylase activity. Our results showed that sour cream manufactured using LRCC5306 possessed superior sensory properties compared to commercialized sour cream. This is anticipated to provide the sensory properties that consumers expect from sour cream, with reduced bitterness and increased sourness. After fermentation with LRCC5306, the viable cell count was over 10⁸ CFU/g. Therefore, in addition to its excellent sensory properties, it is anticipated that this sour cream will act as a source of probiotics. In future research, it will be important to investigate enzymes involved in diacetyl production during LAB fermentation and to explain their mechanisms of action. Moreover, to sustainably improve consumer acceptance, it will be necessary to conduct studies to improve the synergy and balance between flavors following fermentation.

Conflicts of Interest

The authors declare no potential conflicts of interest.

Acknowledgements

This work was supported by Lotte Foods and Korea University.

Author Contributions

Conceptualization: Kim YS. Data curation: Yoon SM. Formal analysis: Jo MY. Methodology: Jo MY. Software: Lee SM. Validation: Shin HJ. Investigation: Kim SH. Writing - original draft: Kim YS, Yoon SM. Writing - review & editing: Kim YS, Yoon SM, Shin HJ, Jo MY, Lee SM, Kim SH.

Ethics Approval

This article does not require IRB/IACUC approval because there are no human and animal participants.

References

- Asghar F, Ali S, Goraya A, Javaid I, Hussain Z. 2017. A review on the role of fermented foods as health promoters. *Int J Sci Res Sci Technol* 3:141-148.
- Bassit N, Boquien CY, Picque D, Corrieu G. 1995. Effect of temperature on diacetyl and acetoin production by *Lactococcus lactis* subsp. *lactis* biovar *diacetylactis* CNRZ 483. *J Dairy Res* 62:123-129.
- Bondarchuk OO. 2018. Influence of temperature regimes of ripening and fermentation stages on the physical and chemical properties of cream and sour-cream butter quality indicators. *Food Sci Technol* 12:57-63.
- Boumerdassi H, Desmazeaud M, Monnet C, Boquien CY, Corrieu G. 1996. Improvement of diacetyl production by *Lactococcus lactis* ssp. *lactis* CNRZ 483 through oxygen control. *J Dairy Sci* 79:775-781.
- Champagne CP, Côté CB. 1987. Cream fermentation by immobilized lactic acid bacteria. *Biotechnology Lett* 9:329-332.
- Dorau R, Chen L, Liu J, Jensen PR, Solem C. 2019. Efficient production of α -acetolactate by whole cell catalytic transformation of fermentation-derived pyruvate. *Microb Cell Fact* 18:217.
- Gebreselassie N, Abrahamsen RK, Beyene F, Abay F, Narvhus JA. 2016. Chemical composition of naturally fermented buttermilk. *Int J Dairy Technol* 69:200-208.
- Gill HS, Rutherford KJ, Prasad J, Gopal PK. 2000. Enhancement of natural and acquired immunity by *Lactobacillus rhamnosus* (HN001), *Lactobacillus acidophilus* (HN017) and *Bifidobacterium lactis* (HN019). *Br J Nutr* 83:167-176.
- Goddik LM. 2012. Sour cream and crème fraîche. In *Handbook of animal-based fermented food and beverage technology*. 2nd ed. Hui YH, Evranuz Ö (ed). CRC Press, Boca Raton, FL, USA. pp 235-246.
- Guo Y, Pan D, Ding H, Wu Z, Sun Y, Zeng X. 2015. Purification and characterization of α -acetolactate decarboxylase (ALDC) from newly isolated *Lactococcus lactis* DX. *J Sci Food Agric* 95:1655-1661.
- Hassan MNA, Mehriz AM, Salem AS, Abozied HH. 2017. Formulation and characterization aspects of light sour cream. *J Food Dairy Sci* 8:257-262.
- Hegazi FZ, Abo-Elnaga IG. 1980. Production of acetoin and diacetyl by lactic acid bacteria in skimmed milk with added citrate and pyruvate. *Z Lebensm Unters Forsch* 171:367-370.
- Ji CE, Ahn HW, Kim WJ. 2015. Effect of α -acetolactate decarboxylase on diacetyl content of beer. *Food Sci Biotechnol* 24:1373-1380.
- Kaneko T, Takahashi M, Suzuki H. 1990. Acetoin fermentation by citrate-positive *Lactococcus lactis* subsp. *lactis* 3022 grown aerobically in the presence of hemin or Cu^{2+} . *Appl Environ Microbiol* 56:2644-2649.
- Khemariya P, Singh S, Nath G, Gulati AK. 2017. Probiotic *Lactococcus lactis*: A review. *Turk J Agric Food Sci Technol*

5:556-562.

- Lim Jh, Yoon Sm, Tan PL, Yang S, Kim Sh, Park Hj. 2018. Probiotic properties of *Lactobacillus plantarum* LRCC5193, a plant-origin lactic acid bacterium isolated from Kimchi and its use in chocolates. *J Food Sci* 83:2802-2811.
- Maurad K, Meriem KH. 2008. Probiotic characteristics of *Lactobacillus plantarum* strains from traditional butter made from camel milk in arid regions (Sahara) of Algeria. *Grasas Y Aceites* 59:218-224.
- Meunier-Goddik L. 2004. Semisolid cultured dairy products: Sour cream and crème fraîche. In *Handbook of food and beverage fermentation technology*. 2nd ed. Hui YH, Meunier-Goddik L, Josephsen J, Nip WK, Stanfield PS (ed). CRC Press, Boca Raton, FL, USA. pp 171-183.
- Monnet C, Aymes F, Corrieu G. 2000. Diacetyl and α -acetolactate overproduction by *Lactococcus lactis* subsp. *lactis* biovar diacetylactis mutants that are deficient in α -acetolactate decarboxylase and have a low lactate dehydrogenase activity. *Appl Environ Microbiol* 66:5518-5520.
- Moyane JN, Jideani AO. 2013. The physicochemical and sensory evaluation of commercial sour milk (amasi) products. *Afr J Food Sci* 7:56-52.
- Narvhus JA, Østby N, Abrahamsen RK. 2019. Science and technology of cultured cream products: A review. *Int Dairy J* 93:57-71.
- Rincon-Delgadillo MI, Lopez-Hernandez A, Wijaya I, Rankin SA. 2012. Diacetyl levels and volatile profiles of commercial starter distillates and selected dairy foods. *J Dairy Sci* 95:1128-1139.
- Shepard L, Miracle RE, Leksrisompong P, Drake MA. 2013. Relating sensory and chemical properties of sour cream to consumer acceptance. *J Dairy Sci* 96:5435-5454.
- United States Department of Agriculture [USDA]. 2000. USDA specifications for sour cream and acidified sour cream. Available from: <https://www.ams.usda.gov/sites/default/files/media/sourcream.pdf>. Accessed at June 5, 2000.