



ARTICLE

High-Throughput Sequencing Reveals Bacterial Diversity in Raw Milk Production Environment and Production Chain in Tangshan City of China

Huihui Cao^{1,2,3,†}, Yanhua Yan^{1,2,3,†}, Lei Wang^{1,2}, Lixue Dong^{1,2,3}, Xueliang Pang^{1,2,3}, Sining Tang^{2,3}, Aijun Li^{1,2}, Aili Xiang^{2,3}, Litian Zhang^{1,2,3,*}, and Baiqin Zheng^{1,2,3,*}

¹Tangshan Food and Drug Comprehensive Testing Center, Tangshan 063000, China

²Hebei Agricultural Products Quality and Safety Testing Innovation Center, Tangshan 063000, China

³Tangshan Institute of Industrial Technology for Functional Agricultural Products, Tangshan 063000, China



Received November 17, 2020
Revised February 27, 2021
Accepted March 5, 2021

***Corresponding author :**

Litian Zhang
Tangshan Food and Drug Comprehensive Testing Center, Tangshan 063000, China
Tel: +86-315-2803905
E-mail: 2384768115@qq.com

Baiqin Zheng
Tangshan Food and Drug Comprehensive Testing Center, Tangshan 063000, China
Tel: +86-13333295559
E-mail: lihua_cahp@sina.com

***ORCID**

Huihui Cao
<https://orcid.org/0000-0002-1964-1655>
Yanhua Yan
<https://orcid.org/0000-0001-5158-0517>
Lei Wang
<https://orcid.org/0000-0002-0823-8182>
Lixue Dong
<https://orcid.org/0000-0002-4766-853X>
Xueliang Pang
<https://orcid.org/0000-0002-3886-3835>
Sining Tang
<https://orcid.org/0000-0003-3416-0400>
Aijun Li
<https://orcid.org/0000-0002-9945-4402>
Aili Xiang
<https://orcid.org/0000-0002-3572-3247>
Litian Zhang
<https://orcid.org/0000-0001-5273-4880>
Baiqin Zheng
<https://orcid.org/0000-0001-8512-1968>

[†] These authors contributed equally to this work.

Abstract Raw milk is a nature media of microbiota that access milk from various sources, which constitutes a challenge in dairy production. This study characterizes the relationship between the raw milk quality and the bacteria diversity at different sampling sites in dairy farms, aiming to provide a strong scientific basis for good hygienic practices and optimized procedure in milk production. High-throughput sequencing of 16S rRNA V3-V4 region was used to analyze the components, abundance and diversity of 48 bacterial population sampled from 8 different sites in dairy farm: pre-sterilized cow's teats (C1), post-sterilized cow's teats (C2), milking cluster (E), milk in storage tank (M1), transport vehicle (M2), storage equipment (E2), cow's dung samples (F) and drinking water (W). Firmicutes account for predominantly 32.36% (C1), 44.62% (C2), 44.71% (E), 41.10% (M1), 45.08% (M2), 53.38% (F) of all annotated phyla. Proteobacteria accounts for 81.79% in W group and Actinobacteria 56.43% in E2 group. At the genus level, *Acinetobacter* was the most abundant genus that causes bovine mastitis, *Acinetobacter* and *Arthrobacter* were dominant in C1, C2, and E groups, *Kocuria* in E2 group and *Arcobacter* in W group. E, C1, and C2 group have very similar bacterial composition, and M1 and M2 demonstrated similar composition, indicating that the milking cluster was polluted by the environment or contact with cow udders. Bacterial population composition in different sampling sites identified by NGS reveals a correlation between the bacteria communities of raw milk production chain and the quality of raw milk.

Keywords high-throughput nucleotide sequencing, microbial community composition, environmental microbiology

Introduction

Milk is nature's most nutritious food comprising of appreciable amount of essential nutrients and micronutrients, such as proteins, lipids, carbohydrates, vitamins and

enzymes, and plays an irreplaceable role and position in the human diet (Abriouel et al., 2008; Thorning et al., 2016). Because of its nutritional properties, milk is also a good culture medium for a variety of spoilage and potentially pathogenic microorganisms which are harmful to human health. With the rapid development of China economy, the increasing demand for dairy products, milk safety problems become the focus of social attention (Gabriels et al., 2015). The quality and safety of raw milk, which is the upstream of dairy supply chain, are the main factors that limit the sustainable and healthy development of dairy industry (Coorevits et al., 2008). The quality of milk is affected by many factors: health status of cows, milk handling and hygiene of milking. The pathogenic microorganisms in raw milk are mainly bacteria, its spoilage causes significant economic losses for the food industry also can affect the health of consumers and even lead to death while lowering the quality of milk (De Silva et al., 2016; Salovuoto et al., 2005).

A growing number of scientific studies indicated that the contamination of raw milk before milking was very low, mainly during milking and milk storage. Milk is considered to be sterile when secreted from a healthy udder, after which numerous contamination sources increase its bacterial load (Vacheyrou et al., 2011). The raw milk secreted by healthy cows is in a relatively sterile state, but the raw milk is inevitably contaminated by microorganisms at every procedures down the production chain, such as being squeezed out and transportation to dairy processing plants (Sørensen et al., 2016).

The research on the source of raw milk microorganisms has been a hot spot in foreign countries in recent years. In China, the research focuses on the studies of pathogenic bacteria but there is little research on the microorganism pollution source of raw milk (Garedew et al., 2012; Marjan et al., 2014). In order to control the microbial contamination and milk safety risk in raw milk, bacteria population dwelling in the production chain and environment of dairy industry in China should be strictly regulated and controlled. Therefore, it is important to characterize bacterial population and its risk factor in raw milk.

The advent of high-throughput sequencing technology facilitates the inquiries in the field of micro-ecology that had been deterred due to technological limits. In this study, high-throughput sequencing technology was used to study the bacteria population structure and diversity in raw milking procedure and dairy farm environment, predicting the source of bacterial contamination in raw milk. The results of this study can be used to predict the possible bacteria species in raw milk, provides the basis for good hygienic practices and standardized operation procedures in the milk production to deliver high-quality milk products.

Material and Methods

Study area and description of different sampling sites

The study was conducted in a large dairy farm (more than 1,500 cows in the stockade) in Tangshan City, Hebei Province, China (118.02°E, 39.63°N). The Milking Parlour, milk-storing hall and Sports Ground were selected as sampling sites. The sampling sites were cleaned and rinsed daily after milking, samples collected included pre-sterilized cow's teats (C1), post-sterilized cow's teats (C2), milking cluster (E), milk in storage tank (M1), milk in transport vehicle (M2), milk storage equipment (E2), cow dung samples (F) and cow's drinking water (W). The samples were stored in liquid nitrogen tank for a short time after collection. Study was performed in September of 2019, and samples were taken 3 times per day, for a consecutive 5 days. The samples collected at the same day was mixed together and serve as a replicate. For each site, 5 repeats were sequenced and analyzed.

Study design and sample collection

In this study, 8 typical sites in dairy farm in Hebei province of China were selected, the bacterial population composition

and diversity were studied by high-throughput sequencing. Samples were collected in the experiment dairy farm. Collection of samples C1.1–C1.6: six healthy cows were randomly selected, samples were taken with sterile cotton swab from the area of 1 cm² around the teats, and then placed in 10 mL sterile normal saline immediately; collection of samples C2.1–C2.6: Samples were taken with sterile cotton swab from the cows corresponds to C1 in the same way; samples collection of E.1–E.6: according to the distribution of the milking cluster, 6 milking cluster that can cover the whole milking parlor were selected, and the surface of the clusters were smeared with sterile cotton swabs for 3 times and placed in sterile saline solution immediately. Collection of M1.1–M1.6 and M2.1–M2.6 samples: after proper blending, the liquid milk bucket was used to collect milk from the surface, the middle and the bottom of the 3 points then thoroughly mixed and evenly, respectively 15 mL milk was taken and divided into 6 sample collection tubes; collection of E2.1–E2.6 samples: wiping with sterile cotton swab and placed in 10 mL sterile normal saline. Collection of F.1–F.6 samples: 6 different directions of cow's sports field were selected, collect the excrement about 1g that does not have the impurity and put it into aseptic test tube with aseptic medicine spoon. Collection of W.1–W.6 samples: after each sampling site >10L breeding water was filtered, the filter membrane (cut or removed) was transferred to a sterile centrifuge tube for storage and inspection. All samples were stored in liquid N₂ for long-term preservation immediately after collection.

DNA extraction and library construction

DNA was extracted from 48 samples of 8 groups. The V3–V4 hypervariable region of 16S rRNA were amplified by PCR for barcoded pyrosequencing. The 16S rRNA gene V3–V4 region of bacteria was amplified using the universal Forward: 5'-ACTCCTACGGGAGGCAGCAG-3' and reverse 5'-GGACTACHVGGGTWTCTAAT-3'. The PCR amplification products were purified and dissolved in Elution Buffer by Agencourt AMPure XP magnetic beads, and then the library was constructed. Agilent 2100 Bioanalyzer was used to detect the range and concentration of fragments in the library, the V3–V4 region of the 16S rDNA gene was amplified with the qualified sample DNA as the template, and the magnetic beads were used to screen Amplicon fragments. Finally, the qualified library was used for Cluster preparation and Paired-end sequencing. The data obtained from the computer were used for the corresponding bioinformatics analysis (Avershina et al., 2013; Smith and Peay, 2014).

Data analysis

The data from Illumina platform was filtered to remove the low-quality sequences and the remaining high-quality valid sequences, which can be used for subsequent analysis (Fadrosh et al., 2014; Sørensen et al., 2016); FLASH V1.2.11 software was used to assemble the paired sequences obtained by paired-end sequencing into a sequence by overlapping relationship, and tag sequences with high variable region were obtained. The minimum matching length was set to 15 bp and the allowable mismatch rate of Overlap region was 10%. Sequences without overlapping relationship were removed (Cicconi-Hogan et al., 2013; Magoč and Salzberg, 2011); USEARCH V9.1 was used to cluster the splice effective sequences with 97% similarity, and then the OTU representative sequences were compared with the Greengene database by RDP Classifier V2.2 software, and the species annotation of OTU was carried out (Edgar, 2013; Edgar et al., 2011; Fouts et al., 2012; Wang et al., 2007); based on the results of OTU and species annotation, species complexity analysis and inter-group species difference analysis were performed.

Abundance analysis, rarefaction analysis and significance analysis of intergroup differences

The α -diversity of 8 groups was calculated using the VEGAN package in R 3.4.3, and the following indices were analyzed:

observed species, Chao, Ace, Shannon, Simpson, and Coverage. The α -diversity values of the samples were calculated using the Mothur (v1.31.2) software, and the corresponding rarefaction curves, Heatmap analysis β -Diversity heatmaps and Clustering trees were generated using the R (v3.1.1) software. Principal component analysis (PCA) was conducted to compare similarities among samples using R and the corresponding rarefaction curves were generated using the R (V3.1.1). Intergroup differences in alpha-diversity indices were presented as box plots. Histograms were constructed for all taxa at the genus level. Cluster analysis was performed using the QIIME (v1.80) software. An iterative algorithm was used to perform sampling of 75% of the sequences in a sample with the least number of sequences using weighted and unweighted taxon abundance data, respectively. The final statistical results were obtained by analyzing the overall statistics after 100 iterations. The clustering method used was the unweighted pair group method with arithmetic mean (UPGMA). The significance of intergroup differences was analyzed using the R software rank-sum test.

Results

Total viable count of 8 tested sites

The total viable count of the 8 tested sites varied substantially. Due to the nature of samples, the total viable count is measured separately in F, which was presented in different unit (CFU/g) and showed extraordinarily high Total viable bacterial counts (TVC; Table 1). Overall, E2 and W demonstrated the lowest TVC, C2, and E present moderate amount of TVC. C1, M1, and M2 demonstrated similar TVC. We can see that the TVC increases significantly from E to M1, and slightly from M1 to M2, indicating that additional measures are desired for the storage and transportation of milk.

Statistical analysis of sequencing results, verification of sampling depth, and OTUs composition analysis

High-throughput sequencing of 16Sr RNA (V3–V4 region) of bacterial genome was carried out on 48 samples from 8 different sampling sites, and the composition of bacterial population was obtained. As shown in Fig. 1, the rarefaction curves of all samples had reached plateaus with the current sequencing, and the species had no more obvious increase as the sample number increased, which indicated that the sequencing depth and coverage was sufficient and the sample volume in our study was relatively large enough to reflect the species richness.

A total of 2,624,955 original sequences and 2,181,981 quality control sequences were obtained from the 48 samples at 8 different sampling sites. After clustering the merged tags, 45,726 OTUs were obtained from the 16S rRNA data at 97%

Table 1. Total viable bacterial counts (TVC) of 8 sites

Site location	Total viable bacterial count of 8 test sites
Pre-sterilized cow's teats (C1)	3.2×10^6 CFU/mL
Post-sterilized cow's teats (C2)	0.89×10^5 CFU/mL
Milking cluster (E)	0.62×10^5 CFU/mL
Milk in storage tank (M1)	3.5×10^5 CFU/mL
Transport vehicle (M2)	4.2×10^5 CFU/mL
Storage equipment (E2)	0.21×10^5 CFU/mL
Cow's dung samples (F)	42×10^7 CFU/g
Drinking water (W)	0.2×10^5 CFU/mL

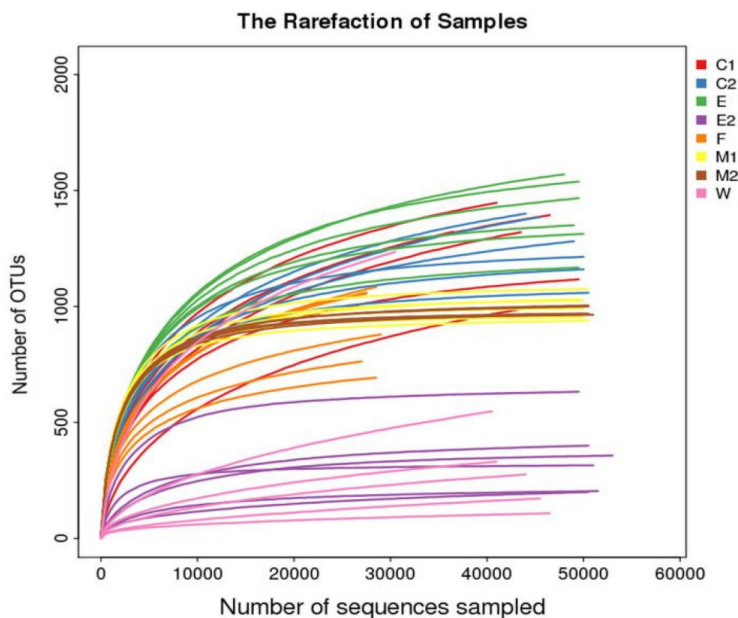


Fig. 1. Rarefaction curves of the bacterial communities at different sampling sites. C1, pre-sterilized cow’s teats; C2, post-sterilized cow’s teats; E, milking cluster; M1, milk in storage tank; M2, transport vehicle; E2, storage equipment; F, cow dung samples; W, drinking water.

similarity. Among them, the OTUs in E group were the most, reaching 8,408 OTUs, while the OTUs in E2 group were the least, only 2, 108 OTUs (Table 2).

OTUs abundance analysis

Among the 48 samples in 8 sampling sites, the common number of OTUs in 8 groups is 372, which accounted for 4.4%–17.6% of the total number of OTUs in each group, of which C1 group has 69 unique OOUTs, C2 has 78 unique OTUs, E has 174 unique OOUTs, M1 has 161 unique OTUs, M2 has 140 unique OTUs, E2 has 92 unique OTUs, F only has 6 unique OTUs and W has 69 unique OTUs, which accounting for 0.91%, 1.04%, 2.07%, 2.68%, 2.38%, 5.69%, 0.11%, 2.58% of the total OOUTs, respectively (Fig. 2). In addition, the results also showed that among the 8 groups, E (milking equipment) group had the most unique OTUs, indicating that E group is most diverse in bacterial populations and post a key factor influencing the quality of milk.

Table 2. Sequence information of samples

Samples ID	Samples clean reads	Clean tags	Tags length (bp)	OTUs
C1	328,104	320,352	418	7,605
C2	328,427	320,149	416	7,502
E	328,883	318,290	415	8,408
M1	327,901	314,746	417	6,016
M2	327,824	317,880	417	5,871
E2	328,157	317,462	413	2,108
F	328,660	321,428	414	5,544
W	326,999	321,884	413	2,672

C1, pre-sterilized cow’s teats; C2, post-sterilized cow’s teats; E, milking cluster; M1, milk in storage tank; M2, transport vehicle; E2, storage equipment; F, cow dung samples; W, drinking water.

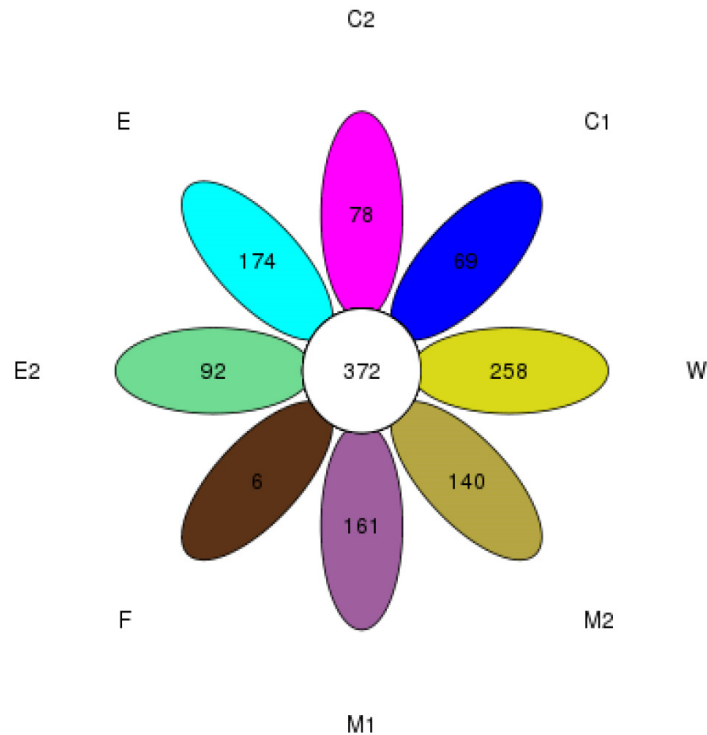


Fig. 2. The picture of OTU Core-Pan of different sampling sites. C1, pre-sterilized cow's teats; C2, post-sterilized cow's teats; E, milking cluster; M1, milk in storage tank; M2, transport vehicle; E2, storage equipment; F, cow dung samples; W, drinking water.

Diversity and composition of bacterial communities

The Alpha diversity indices of 8 groups were as shown in Table 3, and there were significant differences ($p < 0.05$, respectively). The bacterial population richness of C1 and E group were the highest among all sampling sites, and Chao index, Ace index and Shannon index of C2, M1, M2, F groups were significantly higher than E2 and W groups, but Simpson index of C2, M1, M2, F groups was significantly lower than that of E2 and W groups. The Shannon index of E, M1 and M2 was higher than that of the other groups, which indicated that the bacterial population of the milking cluster and raw milk samples had higher diversity, and the species diversity of E2 and W was the lowest.

Table 3. The Alpha diversity index of the samples

Sample/info	Sobs index	Chao index	Ace index	Shannon index	Simpson index	Coverage
C1	1,267.530±171.852	1,510.231±201.751	1,515.750±205.170	4.827±0.7345	0.041±0.043	0.993±0.002
C2	1,250.333±132.952	1,360.722±216.808	1,361.686±229.008	5.373±0.297	0.017±0.009	0.996±0.003
E	1,401.333±152.792	1,489.633±203.448	1,480.794±202.806	5.667±0.063	0.012±0.001	0.997±0.002
M1	1,002.667±51.259	1,018.735±50.420	1,011.785±52.527	5.779±0.092	0.008±0.001	0.999±0.000
E2	351.333±159.439	383.601±149.439	372.815±151.463	2.567±0.889	0.245±0.167	0.999±0.000
M2	978.566±18.328	998.733±33.006	986.595±21.047	5.772±0.0292	0.008±0.001	0.999±0.000
F	924.000±169.513	1,116.558±241.009	1,091.290±235.108	5.083±0.124	0.024±0.003	0.993±0.002
W	445.333±0.000	682.374±519.825	837.135±508.115	2.015±1.246	0.387±0.187	0.995±0.004

C1, pre-sterilized cow's teats; C2, post-sterilized cow's teats; E, milking cluster; M1, milk in storage tank; M2, transport vehicle; E2, storage equipment; F, cow dung samples; W, drinking water.

Analysis of taxonomic annotations

Comparison of OTUs against the database at the phylum, class, order, family, genus, and species levels resulted in the annotation of the 16S rRNA sequence-based OTUs to 36 phyla, 96 classes, 186 orders, 353 families, 766 genus and 896 species.

Comparative analysis of bacterial composition in different sampling sites

The NGS method was used for comparative analysis with Greengene database. Approximately 36 phyla and 799 genera were detected. The predominant phylum was Firmicutes which account for 32.36% (C1), 44.62% (C2), 44.71% (E), 41.10% (M1), 45.08% (M2), 8.08% (E2), 53.38% (F), 4.47% (W) in each group; proteobacteria was the subdominant phylum, which account for 20.72% (C1), 16.01% (C2), 17.39% (E), 15.49% (M1), 13.06% (M2), 21.88% (E2), 3.98% (F). Proteobacteria was the absolute dominant phylum accounting for 81.79% in W group; actinobacteria accounts for 56.43% in E2 group. Minor phyla in 8 groups including Bacteroidetes and Actinobacteria (Fig. 3A).

The dominant genus in 8 groups were *Acinetobacter*, *Arthrobacter*, *Kocuria*, *Chryseobacterium*, *Clostridium*, *Corynebacterium*, *Enhydrobacter*, *Microbacterium*, *Prevotella*, *Macrococcus*. Considerable difference was noted between the bacterial compositions of the 8 groups. The bacterial composition in C1, C2, and E is most similar, the most abundant genus were *Acinetobacter*, *Arthrobacter* and *Sphingobacterium*. The dominant bacterial genera were *Kocuria*, *Microbacterium* and *Chryseobacterium* in E2 group, which account for 30.04%, 10.89% and 8.69%, respectively; The predominant genera was *Acinetobacter* in 8 groups which accounted for 13.06% (C1), 6.31% (C2), 5.84% (E), 5.04% (M1), 3.90% (M2), 6.96% (E2), F (0.81%), W (7.56%) at each sampling sites. *Arthrobacter* was the subdominant bacteria genera, which accounted for 7.43% (C1), 4.01% (C2), 3.65% (E), 0.25% (E2), 0.86% (M1), 1.06% (M2), F (0.01%), W (0.02%) at each sampling site, Ranking the third dominant bacteria genera was *Sphingobacterium*, which accounted for 2.69% (C1), 1.03% (C2), 0.49% (E), 0.14% (E2), 0.17% (M1), 0.18% (M2), F (0.02%), W (0.03%) in each sampling site, respectively (Fig. 3B).

Heatmap analysis

Heatmap clustering analysis were performed at the genus level, and all taxa with an abundance of less than 20% in a sample were group at others. The top 10 most abundant bacterial species, based on the 16S rRNA sequences, were in descending order of *Acinetobacter*, *Arthrobacter*, *Sphingobacterium*, *Macrococcus*, *Corynebacterium*, *Knoellia*, *Psychrobacter*, *Ruminobacter*, *Kocuria*, *Chryseobacterium*. The bacteria population of the collected samples was vertically clustered into two large branches according to the evolutionary relationship. Among the 8 group, C1, C2, and E were relatively close to each other in the graph, which shows that the diversity of species composition is small. The TOP3 bacteria population were *Acinetobacter* C1 (13.06%), C2 (6.31%), E (5.84%), *Arthrobacter* C1 (7.43%), C2 (4.01%), E (3.65%) and *Corynebacterium* C1 (1.57%), C2 (2.11%), E (2.36%). However, *Chryseobacterium* was the predominant genus in M1 and M2 group, which account for M1 (1.96%), M2 (2.26%), *Staphylococcus* was the subdominant genus in M1, M2 groups, which account for M1 (1.91%), M2 (2.15%). The top 3 dominant genus were *Kocuria* (30.04%), *Microbacteria* (10.89%) and *Rossia* (6.92%) in E2 group, while the predominant genus was *Arcobacter* (57.65%) in W group, which indicated that the bacterial population composition in group E2 and W was quite different from that in other groups (Fig. 4).

Cluster analysis of species compositions in different samples

Cluster analysis showed that the bacterial population compositions of the M1 and M2 were quite similar, the bacterial

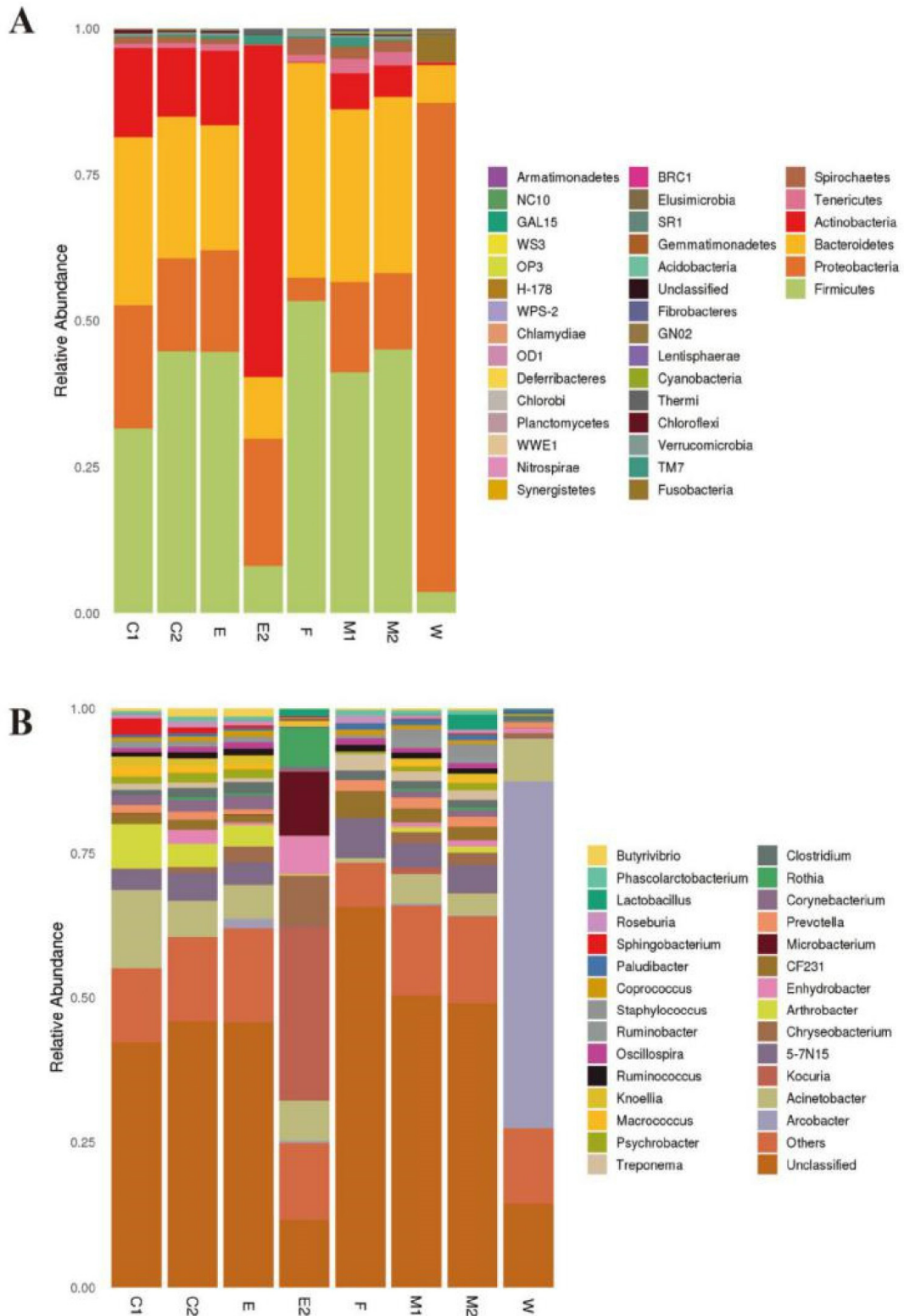


Fig. 3. Relative abundance and diversity of bacteria phylum (A) and bacteria genus (B) in different sampling sites. The x-coordinate is the sample name, and the y-coordinate is the relative abundance of the species annotated. The classification level was not annotated were grouped at unclassified and with an abundance of less than 20% in a sample were group at others. C1, pre-sterilized cow's teats; C2, post-sterilized cow's teats; E, milking cluster; M1, milk in storage tank; M2, transport vehicle; E2, storage equipment; F, cow dung samples; W, drinking water.

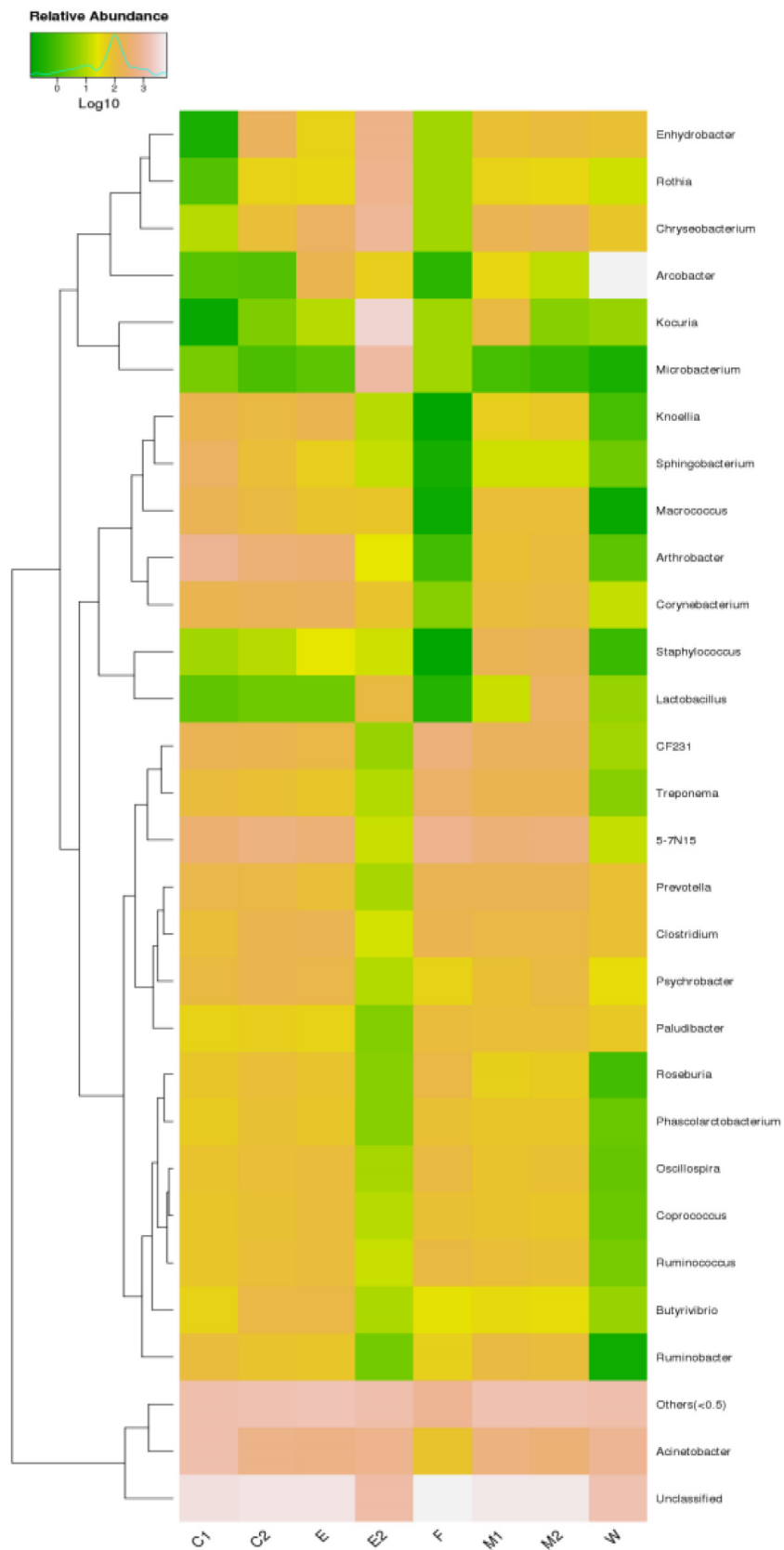


Fig. 4. Relative abundance heatmap of the bacteria in the level of genus. C1, pre-sterilized cow's teats; C2, post-sterilized cow's teats; E, milking cluster; M1, milk in storage tank; M2, transport vehicle; E2, storage equipment; F, cow dung samples; W, drinking water.

population compositions of the C1, C2, and E were quite similar, but E2 group and W group differs in species composition from the other 6 groups (Fig. 5).

Significance analysis of intergroup differences

PCA was performed based on the OTUs abundance. The composition of bacteria population in two raw milk (M1 and M2 group) were very close in the figure, and some sites almost overlapped. In addition, the bacterial population in C1, C2, and E were relatively similar. However, there were significant differences between the W, E2 and other 6 groups in the bacterial population compositions (Fig. 6). The bacterial population structure of the 8 groups showed an obvious clustering phenomenon, with most of them clustered to the left and only a few to the right.

Discussion

High-throughput next-generation sequencing, also known as “next generation” or “deep” sequencing, which can sequence hundreds of thousands to millions of DNA sequences in one time, so it is also called deep sequencing (Ercolini et al., 2012; Quigley et al., 2012). In recent years, high-throughput sequencing technology has been widely used in the study of dairy products, gradually changing from the identification of dominant flora to the studies on the overall diversity of microorganisms (Abriouel et al., 2008; Liu et al., 2015). Due to the complexity of the dairy chain, microbial contamination can occur in different steps of production, leading to the development of adequate control plans for monitoring the microbial quality and safety of milk since production to processing (Wouters et al., 2002). Through high throughput sequencing technology, the key nodes of whole milking procedure which affect raw milk quality were deduced, and the key influencing factors of raw milk quality in the feeding environment of dairy farms were clarified.

Milk in healthy udder cells is thought to be sterile (Johnson et al., 2015), but there after becomes colonised by microorganisms from a variety of sources, including the teat apex, milking equipment, air, water, feed, grass, soil and other environments (Vacheyrou et al., 2011). Previous study found several microbial groups in different milking sites, some groups were used to assess the hygienic procedures and conditions during milking, such as *Mesophilic aerobes* and *Coliforms* (Wouters et al., 2002), some groups were considered as relevant spoilage agents, such as *Sphingobacterium*, *Pseudomonas*, and *Clostridium*; many bacteria were researched due to their pathogenic potential, such as *Acinetobacter*, *Arthrobacter*, *Staphylococcus*, *Campylobacter* and *Arcobacter*, and other bacteria can possess beneficial features, like some *Lactobacillus*, *Lactococcus*, *Streptococcus* and *Enterococcus* (Vacheyrou et al., 2011). This huge diversity is a challenge in the dairy industry, addresses their sources in different production procedure, which can guide the raw milk utilization by consumers and dairy industry.

This study presented a novel investigation of the bacterial population in china dairy farms. The predominant phylum was Firmicutes which account for 32.36% (C1), 44.62% (C2), 44.71% (E), 41.10% (M1), 45.08% (M2), 8.08% (E2), 53.38% (F), 4.47% (W) in each group, The predominant genera was *Acinetobacter* in 8 groups which accounted for 13.06% (C1), 6.31% (C2), 5.84% (E), 5.04% (M1), 3.90% (M2), 6.96% (E2), F (0.81%), W (7.56%) at each sampling sites. Milking parlors as the very heart of every dairy and where milking process are concerned, hygiene is key (Wouters et al., 2002) Udder health is an essential component of quality milk, mastitis is the common disease found in dairy herds in China. Cow teats surface can contain a high diversity of bacteria, this study revealed that *Acinetobacter* (13.06%) and *Arthrobacter* (7.43%) were detected in C1 but *Acinetobacter* (6.31%) and *Arthrobacter* (4.02%) in C2, there is a significant decrease in bacterial richness.

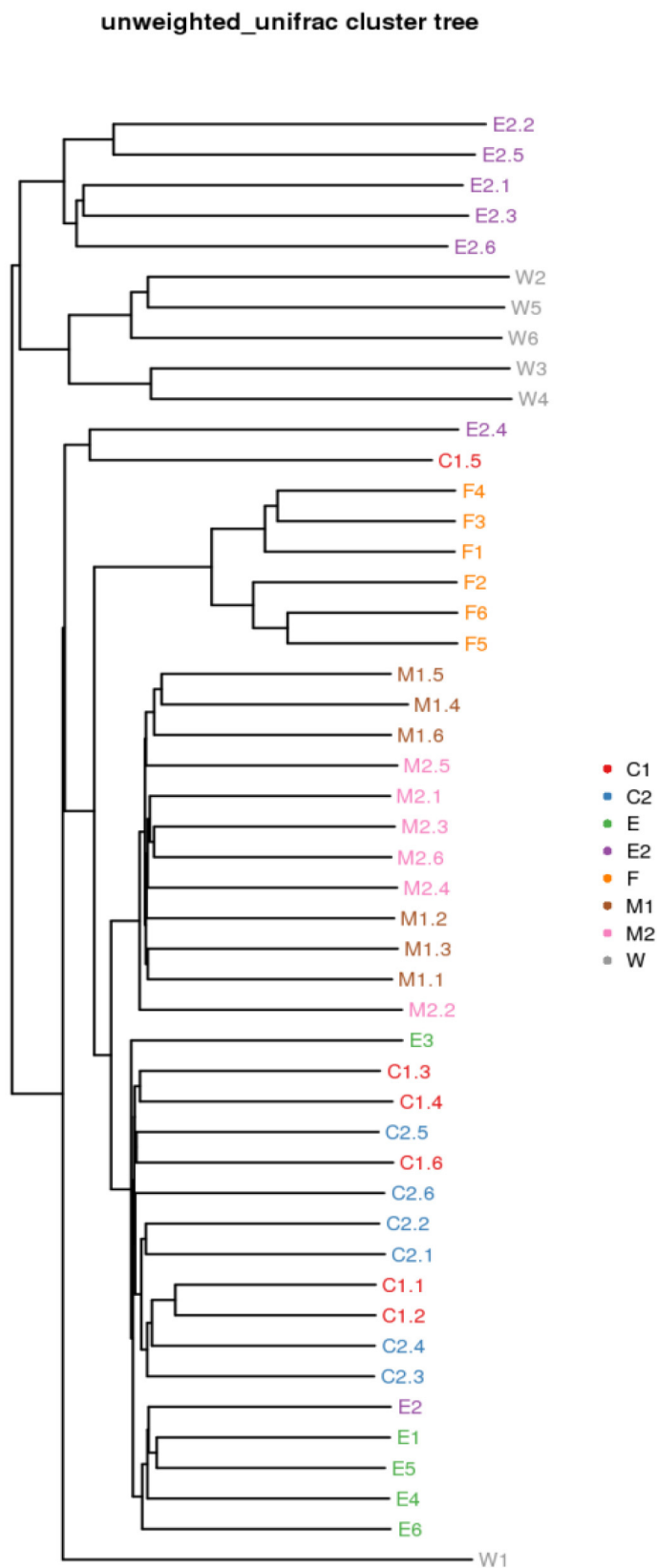


Fig. 5. Samples clustering result (description, weighted_unifrac). The same color represents the samples in the same group. Short distance between samples represents high similarity. C1, pre-sterilized cow's teats; C2, post-sterilized cow's teats; E, milking cluster; M1, milk in storage tank; M2, transport vehicle; E2, storage equipment; F, cow dung samples; W, drinking water.

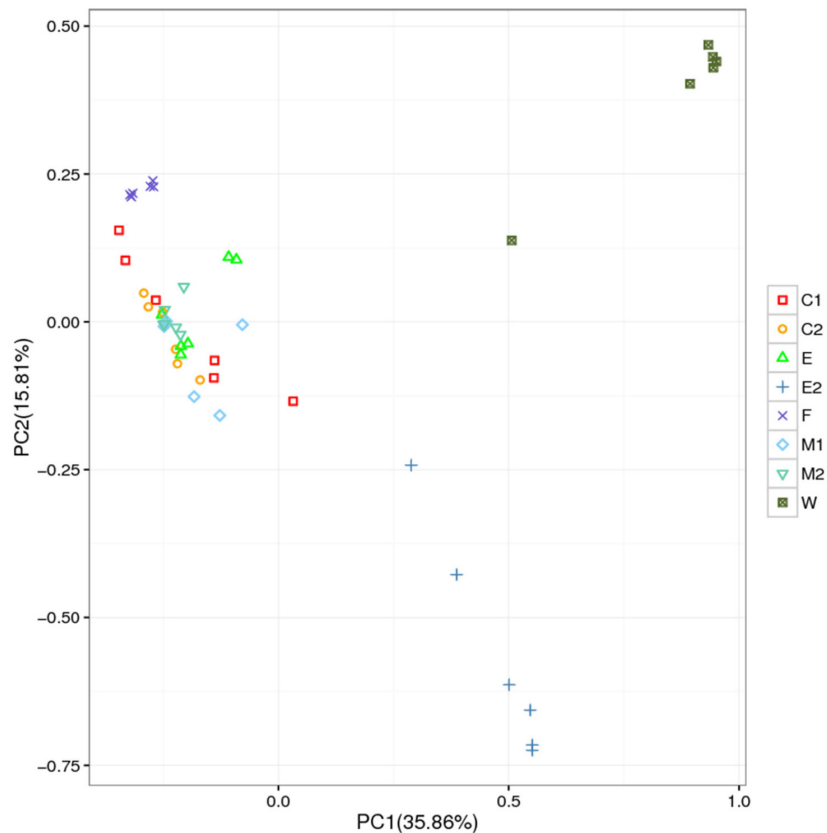


Fig. 6. Principle components analysis based on operational taxonomic units abundance (description). X-axis, 1st principle component and Y-axis, 2nd principal component. Number in brackets represents contributions of principle components to differences among samples. Each small shape in the figure above represents a sample. The shapes of the same color are from the same group. The closer the distance between the two shapes is the smaller, the difference in community composition is high similarity. C1, pre-sterilized cow's teats; C2, post-sterilized cow's teats; E, milking cluster; M1, milk in storage tank; M2, transport vehicle; E2, storage equipment; F, cow dung samples; W, drinking water.

Notably, teats disinfection is very important before milking which can reduce the diversity and richness of bacteria population. Previous study also shown that the use of some disinfectant products for pre-milking teat dip preparation can have beneficial effects on reducing the levels of staphylococcal and streptococcal pathogens on teat skin (Gleeson et al., 2009). Jones and Newburn (2002) found the two basic principles of mastitis control are first, elimination of existing infections and, secondly, prevention of new infections. Milking cluster (E) which can direct touch cow's udder, incomplete cleaning can lead to a risk of mastitis, so, its cleanliness can directly affect the quality of raw milk. According to the results of Samples Clustering (Description, Weighted_Unifrac) and PCA, there was a notable clustering phenomenon toward the C1, C2, and E which may have been caused by the bacterial population composition of the C1, C2, and E were quite similar, it revealed that much of variance in bacterial communities of above 3 groups was associated with cleanness of cow teats and cleanness of milking cluster. The Top 3 dominant bacterial genus in F group were *Treponema* (2.84%), *Prevotella* (1.97%), *Clostridium* (1.60%), this study shows composition of F group was similar to the C1, C2, E, M1, and M2 groups, which further indicated that faeces could not be cleaned in time, microorganisms can cross-contaminate the milking cluster by adhering to the cow's body or by air flow. The top 3 dominant genus in E2 group were *Kocuria* (30.04%), *Microbacteria* (10.89%) and *Rossia* (6.92%), while the predominant genus was *Arcobacter* (57.65%) in W group, which indicated that the bacterial population composition in group E2 and W was quite different from that in other groups. Our study showed that

Acinetobacter (5.04%), *Chryseobacterium* (1.96%) and *Treponema* (1.68%) were the dominant genus in M1. However, *Acinetobacter* (3.90%), *Lactobacillus* (2.62%), *Chryseobacterium* (2.26%) were the dominant genus in M2. Cluster analysis showed that the bacterial population composition of M1 and M2 were quite similar, the results are partly consistent with previous studies, Lafarge and Hagi believed that there were two main strains in the milk, *Lactobacillus* and *Staphylococcus* (Hagi et al., 2010; Hagi et al., 2013). Delbès et al. (2007) detected that the dominant bacteria in milk were *Clostridium* and *Lactobacillus*. Previous study shows that the dominant bacteria detected in the commercial milk were *Acinetobacter* and *Pseudomonas*. In addition, cold-resistant bacteria are the main spoilage bacteria in milk, and *Gammaproteobacteria* and *Bacillus* are also the dominant bacteria with contents more than 1% in this study (Raats et al., 2011). Rasoloflo et al. (2010) believed that the abundance of these two bacteria would increase with the prolongation of refrigeration time, so the processing time of raw milk into commercially available milk should be shortened. Milk storage equipment (E2) can contain a reservoir of bacteria, this study detected that *Kocuria* (30.04%), *Chryseobacterium* (8.69%) and *Enhydrobacter* (6.64%) were the dominant genus bacteria in E2. The bacterial population composition of E2 differs from other 7 groups, the reason for this difference may be caused by the temperature of the milk storage equipment and the microorganisms in the environment.

In conclusion, the difference of bacteria species diversity in different sampling sites may be related to the environmental health status of each space, the timely cleaning and wiping of bovine body, the sterilization of milking cluster and the transmission of aerosol pollution. In this study, a variety of bacteria genera were identified, including some pathogenic bacteria genera such as *Acinetobacter*, *Arthrobacter*, *Sphingosinolium*, *Staphylococcus*, *Pseudomonas* and *Corynebacterium* which were the main dominant bacteria genus in different milking sites. *Acinetobacter* and *Corynebacterium* can cause bovine mastitis, *Sphingomonas* can decompose milk fat and milk protein and remove low milk protein activity. *Pseudomonas aeruginosa* can also cause mastitis in cows. *Bacillus anthracis* can produce enterotoxin, which is highly pathogenic to humans and animals (Ercolini et al., 2012; Quigley et al., 2012). *Acinetobacter* as a kind of conditional pathogenic bacteria causing the cow's mastitis, among 8 groups C1 (the cow teats before disinfection) with the highest percentage (13.06%), followed by W (7.56%), E2 (6.96%) and C2 (6.31%), the result suggests teats disinfection before milking is crucial and the cleanliness of the milk storage equipment also affects the quality of raw milk, the results also indicated that the cleanliness of drinking water in the farm directly affected the quality of raw milk.

In summary, in the traditional dairy farms of China, there are two factors can affect the quality of raw milk, one is the milking procedure, the other is the environmental sanitation. Milking procedure includes cow's teats, milking cluster, milk storage equipment, milk from milk storage tanks and milk from transportation vehicles, the sampling sites in this study were C1, C2, E, E2, M1, and M2, while the farm environment mainly includes faeces and water, sampling sites were F and W in this study, based on the results of our study, bacterial population composition in different sampling sites of milking was significantly different, therefore, we believe that there is a considerable correlation between the proper milking procedure and raw milk quality. The timely disposal of excrement and the cleanliness of drinking water also helpful to guarantee the quality of raw milk, affect the quality of raw milk, pathogenic bacteria of messy environment in the dairy farms will through the injured cow nipple cause mastitis, therefore, it is necessary for the quality of raw milk to be ensured by the proper milking and the hygienic condition in the course of dairy cow breeding.

China has formulated and implemented a nationwide raw milk quality and safety testing plan since 2008, but compared with the development needs of dairy industry, the systematic research is still weak. This study from the perspective of industrial chain, systematically analyzed the effect of milking behavior and environment on the quality of raw milk in dairy farm. About 90% of the bacterial communities which cannot be isolated in lab were obtained through high-throughput

sequencing, this study gave a comprehensive and in-depth understanding of the bacterial diversity and composition along milking in dairy farms. It is of great significance to grasp the key nodes in the milk production process as a whole and provide a strong scientific basis for the quality and safety supervision of raw milk.

Conflicts of Interest

The authors declare no potential conflicts of interest.

Acknowledgements

This work was financially supported by Hebei Provincial System Innovation Initiative of Modern Agriculture Technology, Phase II (HeBei Province:HBCT2018120207), Hebei Provincial Special Funds for Key Innovative Projects and of Dairy Industry Renaissance (HeBei Province:19227516D), Hebei Provincial High-Caliber Talent Award for Key Innovative Projects and of Dairy Industry Renaissance (HeBei Province:A201803034), Tangshan Municipal Funds for Science and Technology (Tangshan City:19150248E), and Leading Talent Award in Sci-Tech of Tangshan City.

Authors Contribution

Conceptualization: Zheng B, Cao H. Data curation: Yan Y, Wang L, Dong L, Pang X. Formal analysis: Cao H, Tang S, Li A. Methodology: Cao H, Zhang L, Xiang A. Writing - original draft: Cao H, Yan Y. Writing - review & editing: Cao H, Yan Y, Wang L, Dong L, Pang X, Tang S, Li A, Xiang A, Zhang L, Zheng B.

Ethics Approval

This article does not require IRB/IACUC approval because there are no human and animal participants.

References

- Abriouel H, Martín-Platero A, Maqueda M, Valdivia E, Martínez-Bueno M. 2008. Biodiversity of the microbial community in a Spanish farmhouse cheese as revealed by culture-dependent and culture-independent methods. *Int J Food Microbiol* 127:200-208.
- Avershina E, Trine F, Knut R. 2013. De novo semi-alignment of 16S rRNA gene sequences for deep phylogenetic characterization of next generation sequencing data. *Microbes Environ* 28:211-216.
- Cicconi-Hogan KM, Gamroth M, Richert R, Ruegg PL, Stiglbauer KE, Schukken YH. 2013. Associations of risk factors with somatic cell count in bulk tank milk on organic and conventional dairy farms in the United States. *J Dairy Sci* 96:3689-3702.
- Coorevits A, De Jonghe V, Vandroemme J, Reekmans R, Heyrman J, Messens W, De Vos P, Heyndrickx M. 2008. Comparative analysis of the diversity of aerobic spore-forming bacteria in raw milk from organic and conventional dairy farms. *Syst Appl Microbiol* 31:126-140.
- Delbès C, Ali-Mandjee L, Montel MC. 2007. Monitoring bacterial communities in raw milk and cheese by culture-dependent

- and -independent 16S rRNA gene-based analyses. *Appl Environ Microbiol* 73:1882-1891.
- De Silva SASD, Kanugala KANP, Weerakkody NS. 2016. Microbiological quality of raw milk and effect on quality by implementing good management practices. *Procedia Food Sci* 6:92-96.
- Edgar RC. 2013. UPARSE: Highly accurate OTU sequences from microbial amplicon reads. *Nat Methods* 10:996-998.
- Edgar RC, Haas BJ, Clemente JC, Quince C, Knight R. 2011. UCHIME improves sensitivity and speed of chimera detection. *Bioinformatics* 27:2194-2200.
- Ercolini D, De Filippis F, La Storia A, Iacono M. 2012. "Remake" by high-throughput sequencing of the microbiota involved in the production of water buffalo mozzarella cheese. *Appl Environ Microbiol* 78:8142-8145.
- Fadrosh DW, Ma B, Gajer P, Sengamalay N, Ott S, Brotman RM, Ravel J. 2014. An improved dual-indexing approach for multiplexed 16S rRNA gene sequencing on the illumina MiSeq platform. *Microbiome* 2:6.
- Fouts DE, Szpakowski S, Purushe J, Torralba M, Waterman RC, MacNeil MD, Alexander LJ, Nelson KE. 2012. Next generation sequencing to define prokaryotic and fungal diversity in the bovine rumen. *PLOS ONE* 7:e48289.
- Gabriels G, Lambert M, Smith P, Wiesner L, Hiss D. 2015. Melamine contamination in nutritional supplements-is it an alarm bell for the general consumer, athletes, and 'weekend warriors?' *Nutr J* 14:69.
- Garedew L, Berhanu A, Mengesha D, Tsegay G. 2012. Identification of gram-negative bacteria from critical control points of raw and pasteurized cow milk consumed at gondar town and its suburbs, Ethiopia. *BMC Public Health* 12:950.
- Gleeson D, O'Brien B, Flynn J, O'Callaghan E, Galli F. 2009. Effect of pre-milking teat preparation procedures on the microbial count on teats prior to cluster application. *Ir Vet J* 62:461.
- Hagi T, Kobayashi M, Nomura M. 2010. Molecular-based analysis of changes in indigenous milk microflora during the grazing period. *Biosci Biotechnol Biochem* 74:484-487.
- Hagi T, Sasaki K, Aso H, Nomura M. 2013. Adhesive properties of predominant bacteria in raw cow's milk to bovine mammary gland epithelial cells. *Folia Microbiol* 58:515-522.
- Johnson B, Joseph M, Jose S, Kinne J, Wernery U. 2015. The microflora of teat canals and udder cisterns in non-lactating dromedaries. *J Camel Pract Res* 22:55-59.
- Jones T, Newburn T. 2002. The transformation of policing? understanding current trends in policing systems. *Br J Criminol* 42:129-146.
- Liu W, Zheng Y, Kwok LY, Sun Z, Zhang J, Guo Z, Hou Q, Menhe B, Zhang H. 2015. High-throughput sequencing for the detection of the bacterial and fungal diversity in Mongolian naturally fermented cow's milk in Russia. *BMC Microbiol* 15:45.
- Magoč T, Salzberg SL. 2011. FLASH: Fast length adjustment of short reads to improve genome assemblies. *Bioinformatics* 27:2957-2963.
- Marjan S, Das KK, Munshi SK, Noor R. 2014. Drug-resistant bacterial pathogens in milk and some milk products. *Nutr Food Sci* 44:241-248.
- Quigley L, O'Sullivan O, Beresford TP, Ross RP, Fitzgerald GF, Cotter PD. 2012. High-throughput sequencing for detection of subpopulations of bacteria not previously associated with artisanal cheeses. *Appl Environ Microbiol* 78:5717-5723.
- Raats D, Offek M, Minz D, Halpern M. 2011. Molecular analysis of bacterial communities in raw cow milk and the impact of refrigeration on its structure and dynamics. *Food Microbiol* 28:465-471.
- Rasolofoa EA, St-Gelais D, LaPointe G, Roy D. 2010. Molecular analysis of bacterial population structure and dynamics during cold storage of untreated and treated milk. *Int J Food Microbiol* 138:108-118.

- Salovu H, Ronkainen P, Heino A. 2005. Introduction of automatic milking system in Finland effect on milk quality. *Agric Food Sci* 14:346-353.
- Smith DP, Peay KG. 2014. Sequence depth, not PCR replication, improves ecological inference from next generation DNA sequencing. *PLOS ONE* 9:e90234.
- Sørensen LP, Bjerring M, Løvendahl P. 2016. Monitoring individual cow udder health in automated milking systems using online somatic cell counts. *J Dairy Sci* 99:608-620.
- Thorning TK, Raben A, Thorning T, Soedamah-Muthu SS, Givens I, Astrup A. 2016. Milk and dairy products: Good or bad for human health? An assessment of the totality of scientific evidence. *Food Nutr Res* 60:32527.
- Vacheyrou M, Normand AC, Guyot P, Cassagne C, Piarroux R, Bouton Y. 2011. Cultivable microbial communities in raw cow milk and potential transfers from stables of sixteen French farms. *Int J Food Microbiol* 146:253-262.
- Wang Q, Garrity GM, Tiedje JM, Cole JR. 2007. Naïve Bayesian classifier for rapid assignment of rRNA sequences into the new bacterial taxonomy. *Appl Environ Microbiol* 73:5261-5267.
- Wouters JTM, Ayad EHE, Hugenholtz J, Smit G. 2002. Microbes from raw milk for fermented dairy products. *Int Dairy J* 12:91-109.