



ARTICLE

## Effect of Dry-Aged Beef Crust Levels on Quality Properties of Brown Sauce

Sin-Young Park<sup>1</sup>, Kuk-Hwan Seol<sup>2</sup>, and Hack-Youn Kim<sup>1,\*</sup>

<sup>1</sup>Department of Animal Resources Science, Kongju National University, Yesan 32439, Korea

<sup>2</sup>National Institute of Animal Science, Rural Development Administration, Wanju 55365, Korea

OPEN ACCESS

Received April 17, 2020

Revised June 12, 2020

Accepted June 16, 2020

\*Corresponding author : Hack-Youn Kim  
Department of Animal Resource Science,  
Kongju National University, Yesan 32439,  
Korea  
Tel: +82-41-330-1041  
Fax: +82-41-330-1249  
E-mail: kimhy@kongju.ac.kr

\*ORCID  
Sin-Young Park  
<https://orcid.org/0000-0001-7900-5987>  
Kuk-Hwan Seol  
<https://orcid.org/0000-0002-0907-882X>  
Hack-Youn Kim  
<https://orcid.org/0000-0001-5303-4595>

**Abstract** This study utilized the crust by-product from dry-aged beef as a flavor enhancer for brown sauce and analyzed its physicochemical and organoleptic properties. The physicochemical properties include proximate composition, color, pH, swelling yield, viscosity, and salinity. The organoleptic properties were studied through electronic nose and sensory evaluations. The moisture content of the samples decreased while fat and protein content increased as crust content increased ( $p < 0.05$ ). The lightness, yellowness, and redness increased with increasing crust content ( $p < 0.05$ ). The pH of the samples also increased as the crust content increased. The viscosity significantly increased while salinity decreased with increasing crust content ( $p < 0.05$ ). The aromatic profiles of the control and samples with 5% and 10% crust addition were distinguishable; however, samples with crust additives between 10% and 15% gave similar aromatic profiles. The taste of the control sample was significantly lower than that of the samples formulated with the crust ( $p < 0.05$ ), and the sensory viscosity of the samples with 10% crust was significantly higher than that of the control ( $p < 0.05$ ). Flavor and overall acceptability tended to increase with increasing crust content of up to 10% addition ( $p < 0.05$ ). These results show that the crust from dry-aged beef loin crust is a suitable natural flavor enhancer for brown sauce and improves its physicochemical and organoleptic properties.

**Keywords** beef, brown sauce, crust, dry aging, food processing

### Introduction

The global sauce market revenue saw a 46.98% increase from 2010 to 2019, from \$86,898 million to \$127,731 million, and is forecasted to continue growing (Statista, 2019). Sauce as a flavor-enhancer, along with color, and are complex seasoning mixtures with varying ingredients (Mcgee, 2004). Flavor is an important factor for sauce palatability—a sauce must satisfy gustatory and olfactory senses. Commonly used natural flavor-enhancers for sauce include vegetables (e.g., green onions, onions, garlic, pepper, and ginger) and seafoods (e.g., anchovies, shrimp, clams, and crevices) (Methven, 2012). As a sauce flavor-enhancer, meat extracts is typically used in meat

stocks and gravy products in some countries. Thus, meat-derived products are restricted to their utilization as spice and in sauce preparation (Varavinit et al., 2000). Among various sauces, brown sauce is world-wide to flavor a diverse range of foods (Mcgee, 2004). Depending on the additional ingredient and the manufacturer, there are various products (William and Akiko, 2012). In particular, many types of brown sauces (e.g., Bigarade sauce, Bordelaise sauce, Devilled sauce, and Lyonnaise sauce, etc.) are used in meat and meat products.

Recently, consumers have shown a preference for quality to quantity during food purchase; hence, high-quality differentiated dry-aged beef has gained consumer attention (Boleman et al., 1997). Unlike wet aging, where the meat is packaged, dry aging partially exposes the meat to air. As moisture in the meat evaporates during the dry aging process, the flavor becomes concentrated and enriched (Lee et al., 2019). Due to this unique flavor, the dry-aged meat is favored by many; nevertheless, the dry aging process also causes surface hardening, which forms a crust on the meat (Laster et al., 2008; Ryu et al., 2018).

Dry-aged beef have been consumed for premium steaks mostly in fine restaurants and upscale grocery stores, but, expanding dry-aged beef consumption market such as common grocery stores (supermarket) and butcher shop (Stenström et al., 2014). As such, the dry-aged beef demand for consumers is increasing due to the unique flavor and taste of dry-aged beef, but as the consumption of dry-aged beef increases, the amount of crust is also increasing. In addition, crust is non-edible but it constitutes 15%–35% can increase the dry-aged beef price (Dashdorj et al., 2016). Therefore, it must be devised to various utilization methods for crust so that the dry-aged beef price stabilization and expansion of consumption. However, the crust has abundant dry-aging flavor compounds because it is trimmed from dehydrated meat surfaces. Hence, the crust could be utilized as a flavor-enhancer. Furthermore, as the crust has exhibited beneficial antioxidant and antihypertensive activities, it has been previously used as a natural flavor-enhancer in beef patties (Park et al., 2018). Nevertheless, crust utilization in sauce preparation has not been widely investigated; therefore, the use non-edible parts of dry-aged beef byproducts, e.g., crust, as a flavor-enhancer in sauces must be researched.

To investigate if crust, the by-product from dry aging meat, can potentially be used in the food industry, it was added to brown sauce and the physicochemical and organoleptic properties were examined.

## Materials and Methods

### Sample preparation and dry aging process

In total, six pieces of beef loin (*M. longissimus dorsi*) were obtained from six carcasses (Holstein steer; Korea quality grade 3) that were two days postmortem, and were divided into three sections of equal length and width. These sections of beef loin were then dry-aged in a dry-aging fridge (DA-45, Korea alessio, Gyeonggi-do, Korea) for four weeks (temperature, 4°C; air velocity, 5±3 m/s; humidity, 80±5%). The crust was cut (height 0.3–0.7 cm) from the outermost edge of the dry-aged beef loin, and was subsequently freeze-dried (FDU-1110, Eyela, Tokyo, Japan) at –70°C for 15 h.

### Brown sauce manufacture

A basic brown sauce was used in this study and was manufactured according to the methods of Lee et al. (2007); and the ingredients are presented in Table 1. Initially, water, hot pepper paste, and tomato paste were mixed for 5 min at 70°C to prepare the brown sauce solution. Secondly, starch dissolved in water was added and the solution was stirred for 4 min at 95°C. After gelatinization, sugar, soy sauce, Worcestershire sauce, garlic, onion, and mirin were added to the solution and it was mixed for 10 min at a constant temperature of 95°C. Lastly, starch syrup, vinegar, basil powder, oregano powder, and

**Table 1.** Ingredient of brown sauce formulated with different levels of dry-aged beef crust

Ingredients (%)	Dry-aged beef crust (%)			
	0 (control)	5	10	15
Water	49.12	49.12	49.12	49.12
Hot pepper paste	3.18	3.18	3.18	3.18
Tomato paste	11.79	11.79	11.79	11.79
Starch	0.59	0.59	0.59	0.59
Sugar	3.93	3.93	3.93	3.93
Soy sauce	6.17	6.17	6.17	6.17
Worcestershire sauce	10.26	10.26	10.26	10.26
Garlic	0.98	0.98	0.98	0.98
Onion	3.93	3.93	3.93	3.93
Mirin	0.98	0.98	0.98	0.98
Starch syrup	7.86	7.86	7.86	7.86
Vinegar	0.98	0.98	0.98	0.98
Basil powder	0.10	0.10	0.10	0.10
Oregano powder	0.05	0.05	0.05	0.05
Bay leaf powder	0.08	0.08	0.08	0.08
Total		100		
Crust	-	5	10	15

bay-leaf powder were added to the solution and mixed for 5 min at 95°C. Following manufacturing, the samples of this basic brown sauce had 0% (control), 5%, 10%, and 15% crust added and were each mixed for 5 min at a temperature maintained at 95°C. The samples were cooled at 20°C for 30 min and then stored at 4°C while the experiments were being conducted. Physicochemical properties (proximate composition, pH, color, and swelling yield) of the crust are presented in Supplementary Table S1.

### Proximate composition

The proximate composition was measured using methods that comply to the AOAC (1990). The moisture, crude protein, crude fat, and ash contents were measured by oven-drying, Kieldahl, Soxhlet, and dry-ashing methods, respectively.

### Color

The CIE general color, lightness ( $L^*$ ), redness ( $a^*$ ), and yellowness ( $b^*$ ) were measured using a colorimeter (CR-10, Minolta, Tokyo, Japan). A white standard plate (CIE  $L^*$ , +97.83; CIE  $a^*$ , -0.43; CIE  $b^*$ , +1.98) was used for reference.

### pH

Homogenized samples were prepared from 4 g of each sample and 16 mL of distilled water, using an Ultra-Turrax homogenizer (HMZ-20DN, Poolim Tech, Seoul, Korea) at 10,923×g for 1 min. The pH was then measured using a pH meter

(Model S220, Mettler-Toledo, Schwerzenbach, Switzerland).

### Swelling yield

Each sample (10 g) was mixed with 100 mL of pH 3, pH 4 Tris-HCl buffer, and distilled water, respectively and stirred using a vortex mixer (SVM-10, SciLab, Seoul, Korea) for 1 min. The samples were then left at room temperature (25°C) for 1 hr. The supernatant was removed and the remaining sediment was weighed. The percentage swelling yield was calculated from the sediment weight using the equation below.

$$\text{Swelling yield (\%)} = \frac{\text{Weight after swelling (g)}}{\text{Weight before swelling (g)}} \times 100$$

### Viscosity

The viscosity of the samples was measured using a rotational viscometer (Merlin VR, Rheosys, Hamilton Township, NJ, USA). The viscometer was attached to a 30-mm cone, and the sample was placed in a 25-mm co-axial cylinder. Measurements were performed over 60 s at 25°C with a head speed of 0.43×g. The average of the measured values was calculated and presented in units of Pa.s.

### Salinity

For measuring brown sauces salinity measurements were taken using a salinity meter (SB-2000PRO, HM Digital, Redondo Beach, CA, USA), measured values were presented a salinity (%).

### Electronic nose

Aroma profiling of the brown sauce samples was performed using a Heracles II electronic nose (Alpha MOS, Toulouse, France). The electronic nose analysis conditions were as follows: Injected volume, 5 mL; injection temperature, 200°C; Trap ready temperature, 40°C; sampling duration, 4 s; trap desorption temperature, 250°C; injection duration, 1.5 s; column temperature program, 51°C (10 s) to 260°C (4 s); detector temperature, 260°C. Before the PCA, the sensitivity of each electronic-nose sensor was measured to determine the rate of change between the resistance values of the volatile compound and the air. These measured sensitivity values were used in the Alpha soft program (Alpha MOS) employed for the PCA procedure. The classified aroma pattern was given as the primary component value (PC1) and the secondary component value (PC2).

**Table 2. Proximate composition of brown sauce formulated with different levels of dry-aged beef crust**

Trait	Dry-aged beef crust (%)			
	0 (control)	5	10	15
Moisture (%)	67.44±0.10 <sup>a</sup>	62.76±0.27 <sup>b</sup>	58.90±1.06 <sup>c</sup>	59.09±0.53 <sup>c</sup>
Fat (%)	0.25±0.13 <sup>c</sup>	1.62±0.12 <sup>b</sup>	3.35±0.82 <sup>a</sup>	3.44±0.56 <sup>a</sup>
Protein (%)	1.73±0.22 <sup>d</sup>	5.97±0.50 <sup>c</sup>	9.00±0.84 <sup>b</sup>	10.62±0.26 <sup>a</sup>
Ash (%)	3.71±0.03	3.70±0.04	3.68±0.07	3.72±0.06

All values are mean±SD.

<sup>a-d</sup> Means on the same row with different letters are significantly different (p<0.05).

## Sensory evaluation

The sensory evaluations of each sample were performed in triplicate by 10 sensory panelists. The panelists used basic taste identification tests and trained with commercial brown sauce products for 7 days (1 hr sessions per day) to familiarize themselves with the sensory properties to be evaluated. The color, taste, flavor, viscosity, and overall acceptability (1, extremely undesirable; 10, extremely desirable) of the samples were evaluated on a 10-point descriptive scale. The sensory evaluation was approved by the Kongju National University's Ethics Committee (Authority No: KNU 2020-15).

## Statistical analysis

The results for all the analyses, except the electric nose, were assessed after a minimum of 3 trials. Statistical analysis of variance was performed on all variables, compiled, and analyzed by the general linear model (AVOVA), using SAS version 9.3 (SAS Institute, Cary, NC, USA), and Duncan's multiple range test, which verified the significance of the differences ( $p < 0.05$ ). The gathered data were presented as mean  $\pm$  SD.

## Results and Discussion

### Proximate composition

The general composition of brown sauces with varying levels of dry-aged beef crust are provided in Table 2. Excluding ash content, we observed significant differences in the contents of moisture, fat, and protein. As more crust content was introduced, the moisture level of the samples exhibited an overall decrease, while the fat and protein contents both increased ( $p < 0.05$ ). In a comparable case, it was reported that the general composition of sauce or gravy products changed depending on the compositions of the ingredients being added in or taken out (Abdullah et al., 2018; Tsikritzi et al., 2015). Likewise, in this study, the differences seen in the general composition of the sauce samples were believed to be caused by the high content of fat and protein in the crust (fat: 29.81%, protein: 56.25%; Supplementary Table S1).

### Color and pH

Sauces are semi-solid foods (Juszczak et al., 2004), and their color tends to change with different additives. As the sauce color greatly affects the consumer selection of the product, the effect of the crust additive on the brown sauce color was studied (Table 3). The lightness (CIE  $L^*$ ) and yellowness (CIE  $b^*$ ) of the samples were significantly augmented with the addition of crust content ( $p < 0.05$ ). Similarly, the redness (CIE  $a^*$ ) of the samples intensified with increasing crust content. These changes in the sample chromaticity are likely influenced by the chromaticity of the crust ( $L^*$ , 45.00;  $a^*$ , 8.50;  $b^*$ , 7.30; Supplementary Table S1). Although, the CIE  $b^*$  values of the samples containing the crust additive (7.92–9.32) were higher than that of the crust alone (7.30, Supplementary Table S1). When beef is heated above a certain temperature it browns, which increases the yellowness (Young and West, 2001). With the addition of the crust, the browning is believed to have occurred at 95°C during the process of heating.

The pH values of brown sauces with different crust contents are provided in Table 3. The pH values of the samples increased when adding a crust content of up to 10% ( $p < 0.05$ ); however, insignificant differences were observed when the added crust was above 10%. Despite the pH not changing when  $>10\%$  crust was added, the pH variations observed with lower levels of added crust seemed to be influenced by the pH of the crust (5.27, Supplementary Table S1). Similar cases have shown variations in the pH of gravy and brown sauce due to additives (Juneja et al., 1999; Lee et al., 2007); thus,

**Table 3.** Color and pH of brown sauce formulated with different levels of dry-aged beef crust

Trait	Dry-aged beef crust (%)			
	0 (control)	5	10	15
Color				
CIE L*	28.16±0.09 <sup>d</sup>	29.18±0.08 <sup>c</sup>	30.10±0.10 <sup>b</sup>	30.38±0.18 <sup>a</sup>
CIE a*	5.34±0.38 <sup>c</sup>	6.70±0.21 <sup>b</sup>	7.36±0.34 <sup>a</sup>	7.70±0.24 <sup>a</sup>
CIE b*	6.24±0.11 <sup>d</sup>	7.92±0.13 <sup>c</sup>	8.98±0.28 <sup>b</sup>	9.32±0.19 <sup>a</sup>
pH	4.12±0.01 <sup>c</sup>	4.37±0.01 <sup>b</sup>	4.54±0.02 <sup>a</sup>	4.55±0.01 <sup>a</sup>

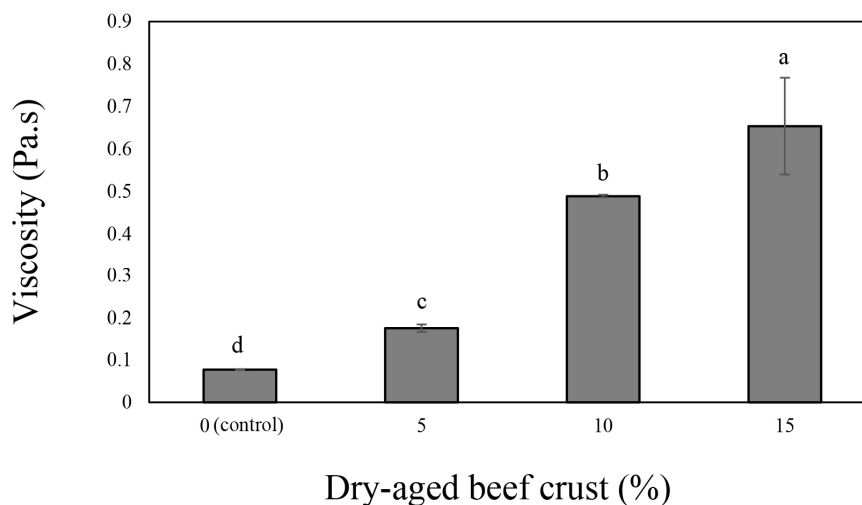
All values are mean±SD.

<sup>a-d</sup> Means on the same row with different letters are significantly different ( $p < 0.05$ ).

supporting the link observed between the pH changes of brown sauce with the addition of crust.

### Viscosity

The high viscosity of sauces serves as an indicator of how well the additives are mixed (Yapar et al., 2006). To control the viscosity, using emulsion agents like that the starch and whey protein are commonly used (Kadam et al., 2018). When the viscosity is excessively low the sauce will likely flow off of the food; whereas, excessively high viscosity will restrict the usage of the sauce (Zeng et al., 1996). The viscosity of the control sample was shown to be 0.07 Pa.s, which increased to 0.17 Pa.s, 0.48 Pa.s, and 0.65 Pa.s, for 5%, 10%, and 15% crust addition, respectively (Fig. 1;  $p < 0.05$ ). This shows that the lyophilized crust had a swelling yield of 278.94% at a pH of 4, which was higher than the other conditions (Supplementary Table S1). The high swelling power of crust additive in brown sauce, which has a pH range around of 4–5, contributed to the binding of the ingredients composing the sauce. The swelling potential of the crust, according to the powdering of the raw materials, is said to be greater when it is freeze-dried, rather than heat-dried. Furthermore, the lyophilized products are known for their rehydration ability (Eshtiaghi et al., 1994). The crust used in the present study underwent freeze-drying; therefore, it can be deduced that the addition of this crust led to rehydration and enhanced the mixing potential of the additives in the brown sauce.



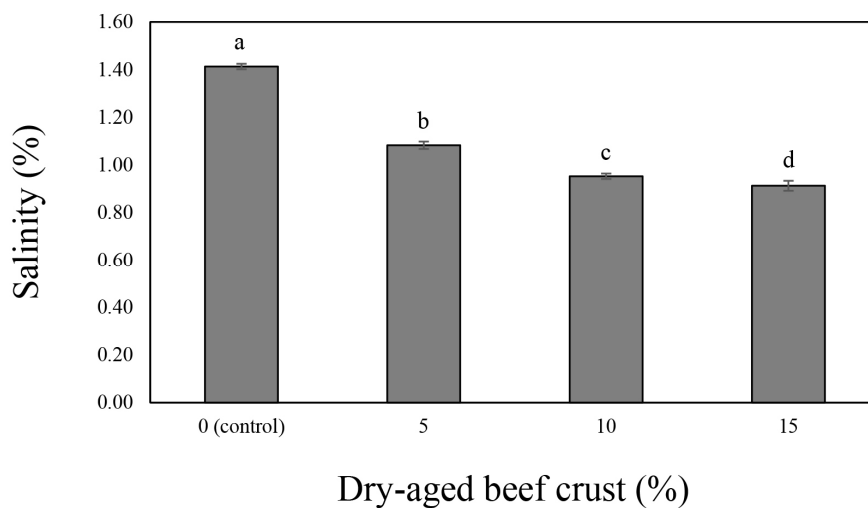
**Fig. 1.** Viscosity of brown sauce formulated with different levels of dry-aged beef crust. <sup>a-d</sup> Means on the same bar with different letters are significantly different ( $p < 0.05$ ).

## Salinity

The salinity of brown sauce with different crust contents is shown in Fig. 2, which decreased from 1.41% to 0.91% as the crust content increased ( $p < 0.05$ ). This can be explained by the decreasing proportion of added raw materials, due to increasing crust additive, that affect the salinity of the sauce, such as red pepper paste, soy sauce, and Worcester sauce. Similarly, Kim et al. (2009) observed a salinity reduction during the processing of demi-glace sauces when thickening agents, such as roux, were added. Nowadays, consumer health is at risk of developing various diseases related to excessive sodium consumption. Considering this, the meat industry is developing various low-sodium meat products with the goal of reducing the sodium intake of meat consumers (Desmond, 2006). Therefore, it is advantageous that, along with enhanced umami, the addition of crust to the brown sauce also reduces the sodium content.

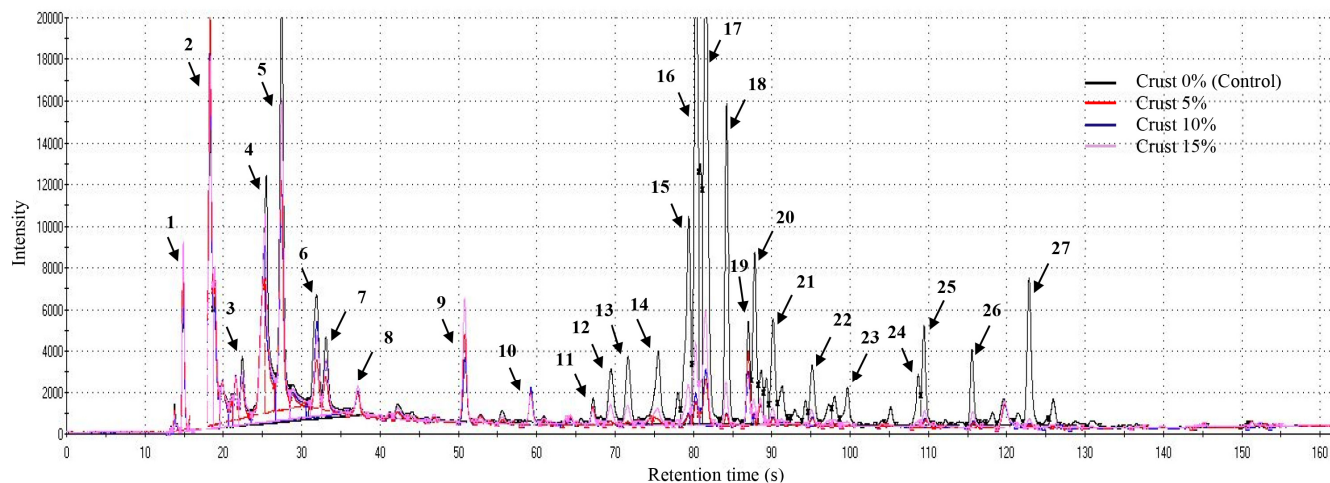
## Electronic nose (principal component analysis plot, PCA)

To examine the differences in the volatile aroma of brown sauce samples, the results of analysis of volatile compounds according to the retention time for each samples were shown in chromatograms (Fig. 3). It was confirmed that there was a change in the type and amount of volatile compounds depending on the amount of crust added. Especially, increased the nonan-2-one component, having the "baked", "hot milk-like", and "fatty" flavors, which are positive factors for the brown sauce flavor. This component was detected in all the samples with crust, and increased as the amount of crust added. The principal component in PC2 (2.062%) was lower than that in PC1 (97.596%). Compared to the principal component of PC1, the principal component of PC2 did not show significant difference in the aroma profiles. Thus, the aromatic components in PC1 (X-axis) were considerably different than those in PC2 (Y-axis) (Xiao et al., 2014). The PCA results for brown sauce formulated with different levels of dry-aged beef crust are shown in Fig. 4. The aromatic profiles of the control and the samples with 5% and 10% crust additive were all distinguishable from each other; however, the samples with 10%–15% crust content exhibited a close proximity of their aromatic profiles. Therefore, a crust addition of over 10% is not expected to yield significant results regarding flavor. Moreover, using PCA, Oh (2018) reported a significant difference in the flavor component between meat samples that underwent 28 days of the dry aging process and those that underwent a shorter dry

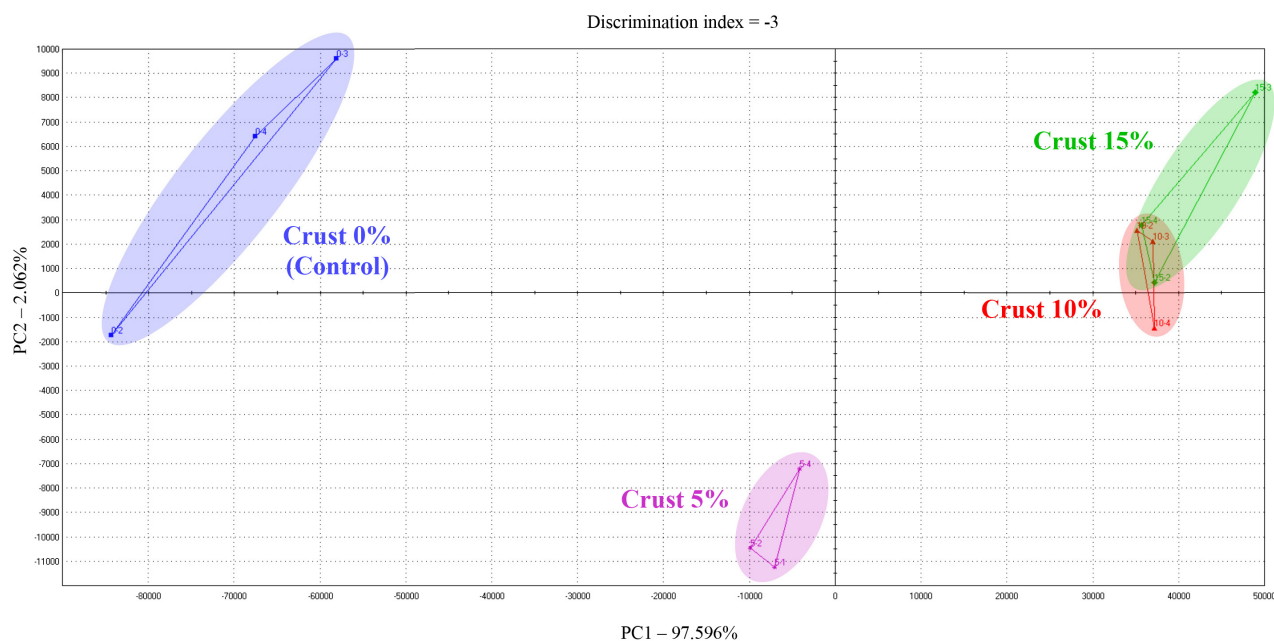


**Fig. 2.** Salinity of brown sauce formulated with different levels of dry-aged beef crust. <sup>a-d</sup> Means on the same bar with different letters are significantly different ( $p < 0.05$ ).





**Fig. 3.** Volatile compounds of brown sauce formulated with different levels of dry-aged beef crust. Peaks are reported in order of elution: 1, acrylonitrile; 2, trometamol; 3, methyl formate; 4, 2-methylbutane; 5, diethyl ether; 6, acetonitrile; 7, butan-2-one; 8, ethylbenzene; 9, nonan-2-one; 10, methyl 2-propenoate; 11, 3-methylbutanal; 12, 1-hydroxy-2-propanone; 13, acetoin; 14, hexanal; 15, 1-methyl-4-isopropenyl-1-cyclohexene; 16, methyl heptanoate; 17, 1, 8-cineole; 18, 2-methyldecane; 19, 3-nonanol; 20, p-chlorotoluene; 21, psi-cumene; 22, pentyl 2-methyl-2-propenoate; 23, linalool; 24, (E,E)-2,4-octadienal; 25, triethyl phosphate; 26, ethyl-4-hydroxymethyl-3(2H)-Furanone; 27, benzene, pentyl-.



**Fig. 4.** Principal component analysis plot of brown sauce formulated with different levels of dry-aged beef crust.

aging duration. Likewise, the crust used in the present study was prepared from the dry aged beef for 28 days, dry-aged meat, which likely influenced the flavor of the resulting brown sauce samples. Dry-aging process of meat results in protein decomposition due to myofibrillar fragmentation (Spanier et al., 1997), and this leads to an increase in IMP and glutamic acid content that are responsible for the umami taste (Iida et al., 2016). Hence, because the crust of dry-aged meat is concentrated with components that give an umami taste, it could influence the flavor of the brown sauce.



## Sensory evaluation

Table 4 consists of sensory evaluation data with respect to the various crust contents in the brown sauce samples. Differences in color were negligible between the samples, but the taste of the control sample was significantly inferior to that of the samples formulated with the crust ( $p < 0.05$ ). However, the differences in taste between each crust-formulated sample were not large, and the flavor overall seemed to only enhance from 0 to 10% crust addition. Furthermore, sensory viscosity of the 10% crust sample was noticeably superior than the control sample ( $p < 0.05$ ); whereas, minimal differences were observed between the samples formulated with the crust. The overall acceptability of samples significantly increased as crust content increased, but only up to 10% addition ( $p < 0.05$ ). The differences in the sensory evaluation of the taste and flavor of the samples are due to the varying crust concentrations, as flavor substances are generated in the crust during heating. During this heating process, Maillard reactions take place between carbohydrate-containing free amino groups and amino acids, and the by-product of subsequent unsaturated fat breakdown is responsible for the meaty flavor (Aaslyng and Meinert, 2017). This meaty flavor from crust, due to the drying process, is thought to have a positive impact on the characteristics of sauces, as the viscosity increases with greater crust addition (Fig. 1). Furthermore, additives with carbohydrates and proteins generally act as emulsifiers for various types of sauces (Sikora et al., 2008). Therefore, the intensified emulsification from the addition of crust was a contributing factor to the increased viscosity and enhanced sensory characteristics of the brown sauce.

## Conclusion

In this study, we used a crust derived from dry-aged beef loin as a flavor enhancer for brown sauce. With increasing crust content, lightness, yellowness, and viscosity increased and salinity decreased, indicating the positive effect of crust addition. In case of redness, pH, and aromatic profile, there were no significant differences between the 10% crust and 15% crust samples. The sensory evaluation of the 10% crust sample was excellent compared to the other samples. Therefore, these results suggest that adding 10% dry-aged beef crust to brown sauces as a natural flavor enhancer can improve their physiochemical and sensory properties.

## Supplementary Materials

Supplementary materials are only available online from: <https://doi.org/10.5851/kosfa.2020.e45>.

**Table 4.** Sensory evaluation of brown sauce formulated with different levels of dry-aged beef crust

Trait	Dry-aged beef crust (%)			
	0 (control)	5	10	15
Color	8.29±0.49	8.71±1.25	8.43±1.40	8.29±1.11
Taste	7.57±0.79 <sup>b</sup>	9.00±0.58 <sup>a</sup>	9.00±0.82 <sup>a</sup>	8.86±1.21 <sup>a</sup>
Flavor	7.86±0.90 <sup>b</sup>	8.29±0.76 <sup>ab</sup>	9.00±0.82 <sup>a</sup>	9.00±0.82 <sup>a</sup>
Sensory viscosity	7.71±0.76 <sup>b</sup>	8.71±0.49 <sup>ab</sup>	9.00±1.00 <sup>a</sup>	8.86±1.46 <sup>ab</sup>
Overall acceptability	7.71±0.49 <sup>c</sup>	8.43±0.53 <sup>b</sup>	9.29±0.49 <sup>a</sup>	9.14±0.69 <sup>a</sup>

All values are mean±SD.

<sup>a-c</sup> Means on the same row with different letters are significantly different ( $p < 0.05$ ).

All samples were evaluated on a 10-point descriptive scale (1, extremely undesirable; 10, extremely desirable).

## Conflicts of Interest

The authors declare no potential conflict of interest.

## Acknowledgements

This research was supported by Korea Institute of Planning and Evaluation for Technology in Food, Agriculture and Forestry (IPET), funded by Ministry of Agriculture, Food and Rural Affairs (MAFRA: 119024-03).

## Author Contributions

Conceptualization: Kim HY. Data curation: Seol KH, Kim HY. Formal analysis: Park SY. Methodology: Kim HY. Software: Park SY, Seol KH. Validation: Seol KH, Kim HY. Investigation: Park SY. Writing - original draft: Park SY. Writing - review & editing: Park SY, Seol KH, Kim HY.

## Ethics Approval

The experiment was approved by the Kongju National University's Ethics Committee (Authority No: KNU2020-15).

## References

- Aaslyng MD, Meinert L. 2017. Meat flavour in pork and beef: From animal to meal. *Meat Sci* 132:112-117.
- Abdullah N, Wahab N, Saruan N, Matias-Peralta HM, Xavier NR, Muhammad N, Talip BA, Bakar MFA. 2018. Effect of replacing coconut milk with almond milk in spicy coconut gravy on its sensorial, nutritional and physical properties. *Mater Today* 5:21919-21925.
- AOAC. 1990. Official methods of analysis. 15<sup>th</sup> ed. Association of Official Analytical Chemists, Washington, DC, USA. pp 1-788.
- Boleman SJ, Boleman SL, Miller RK, Taylor JF, Cross HR, Wheeler TL, Koohmaraie M, Shackelford SD, Miller MF, West RL, John DD, Savell JW. 1997. Consumer evaluation of beef known categories of tenderness. *J Anim Sci* 75:1521-1524.
- Dashdorj D, Tripathi VK, Cho S, Kim Y, Hwang I. 2016. Dry aging of beef: Review. *J Anim Sci Technol* 58:20.
- Desmond E. 2006. Reducing salt: A challenge for the meat industry. *Meat Sci* 74:188-196.
- Eshtiaghi MN, Stute R, Knorr D. 1994. High-pressure and freezing pretreatment effects on drying, rehydration, texture and color of green beans, carrots and potatoes. *J Food Sci* 59:1168-1170.
- Iida F, Miyazaki Y, Tsuyuki R, Kato K, Egusa A, Ogoshi H, Nishimura T. 2016. Changes in taste compounds, breaking properties, and sensory attributes during dry aging of beef from Japanese black cattle. *Meat Sci* 112:46-51.
- Juneja VK, Marmer BS, Eblen BS. 1999. Predictive model for the combined effect of temperature, pH, sodium chloride, and sodium pyrophosphate on the heat resistance of *Escherichia coli* O157:H7. *J Food Saf* 19:147-160.
- Juszczak L, Witczak M, Fortuna T, Banyś A. 2004. Rheological properties of commercial mustards. *J Food Eng* 63:209-217.
- Kadam BR, Ambadkar RK, Rathod KS, Landge S. 2018. Health benefits of whey: A brief review. *Int J Livest Res* 8:31-49.
- Kim DS, Choi SK, Lee JP, Choi SH. 2009. Physiological and sensory characteristics of demi-glace sauce with roux. *Korean J Culin Res* 15:150-160.
- Laster MA, Smith RD, Nicholson KL, Nicholson JDW, Miller RK, Griffin DB, Harris KB, Savell JW. 2008. Dry versus wet

- aging of beef: Retail cutting yields and consumer sensory attribute evaluations of steaks from ribeyes, strip loins, and top sirloins from two quality grade groups. *Meat Sci* 80:795-804.
- Lee HJ, Yoon JW, Kim M, Oh H, Yoon Y, Jo C. 2019. Changes in microbial composition on the crust by different air flow velocities and their effect on sensory properties of dry-aged beef. *Meat Sci* 153:152-158.
- Lee JA, Shin YJ, Park GS. 2007. Quality characteristics of brown sauce with added apricot during storage. *Korean J Food Cook Sci* 23:877-883.
- Mcgee H. 2004. *On food and cooking: The science and lore of the kitchen*. Unwin Hyman, London, UK. pp 580-581.
- Methven L. 2012. Natural food and beverage flavour enhancers. In *Natural food additives, ingredients and flavourings*. 1<sup>st</sup> ed. Baines D, Seal R (ed). Woodhead, Cambridge, UK. pp 76-99.
- Oh J. 2018. Establishment of aging indicator for dry-aged beef. M.S. thesis, Seoul National Univ., Seoul, Korea.
- Park B, Yong HI, Choe J, Jo C. 2018. Utilization of the crust from dry-aged beef to enhance flavor of beef patties. *Korean J Food Sci Anim Resour* 38:1019-1028.
- Ryu S, Park MR, Maburutse BE, Lee WJ, Park DJ, Cho S, Hwang I, Oh S, Kim Y. 2018. Diversity and characteristics of the meat microbiological community on dry aged beef. *J Microbiol Biotechnol* 28:105-108.
- Sikora M, Badrie N, Deisingh AK, Kowalski S. 2008. Sauces and dressings: A review of properties and applications. *Crit Rev Food Sci Nutr* 48:50-77.
- Spanier AM, Flores M, McMillin KW, Bidner TD. 1997. The effect of post-mortem aging on meat flavor quality in Brangus beef. Correlation of treatments, sensory, instrumental and chemical descriptors. *Food Chem* 59:531-538.
- Statista. 2019. Sauces & spices. Food report 2019. Available from: <https://www.statista.com/outlook/40070000/100/sauces-condiments/worldwide>. Accessed at Feb 10, 2020.
- Stenström H, Li X, Hunt MC, Lundström K. 2014. Consumer preference and effect of correct or misleading information after ageing beef *longissimus* muscle using vacuum, dry ageing, or a dry ageing bag. *Meat Sci* 96:661-666.
- Tsikritzi R, Wang J, Collins VJ, Allen VJ, Mavrommatis Y, Moynihan PJ, Gosney MA, Kennedy OB, Methven L. 2015. The effect of nutrient fortification of sauces on product stability, sensory properties, and subsequent liking by older adults. *J Food Sci* 80:S1100-S1110.
- Varavinit S, Snobsngob S, Bhidyachakorawat M, Suphantharika M. 2000. Production of meat-like flavor. *Sci Asia* 26:219-224.
- William S, Akiko A. 2012. History of worcestershire sauce (1837–2012). Soyinfo Center, Lafayette, CA, USA. pp 34-114.
- Xiao Z, Yu D, Niu Y, Chen F, Song S, Zhu J, Zhu G. 2014. Characterization of aroma compounds of Chinese famous liquors by gas chromatography-mass spectrometry and flash GC electronic-nose. *J Chromatogr B* 945-946:92-100.
- Yapar A, Atay S, Kayacier A, Yetim H. 2006. Effects of different levels of salt and phosphate on some emulsion attributes of the common carp (*Cyprinus carpio* L., 1758). *Food Hydrocoll* 20:825-830.
- Young OA, West J. 2001. Meat color. In *Meat science and applications*. Hui YH, Nip WK, Rogers RW, Young OA (ed). Marcel Dekker, New York, NY, USA. pp 39-70.
- Zeng W, Zhang HZ, Lee TC. 1996. Direct determination of the starch content in gravy by near-infrared spectroscopy. *J Agric Food Chem* 44:1460-1463.