

Erratum to : Immune-Enhancing Effects of Green Lettuce (*Lactuca sativa* L.) Extracts through the TLR4-MAPK/NF- κ B Signaling Pathways in RAW264.7 Macrophage Cells

Hyun-Ju Seo¹ and Jin Boo Jeong^{2*}

¹Post-doc, Institute of Agricultural Science and Technology, Andong National University, Andong 36729, Korea

²Professor, Department of Medicinal Plant Resources, Andong National University, Andong 36729, Korea

published online: 1 June 2020

© 2020 by The Plant Resources Society of Korea

Korean J. Plant Res. 33(3):183–193(2020)

https://doi.org/10.7732/kjpr.2020.33.3.183

Due to an unfortunate oversight Figure 4 was omitted from this paper.

Figure 4 appears below.

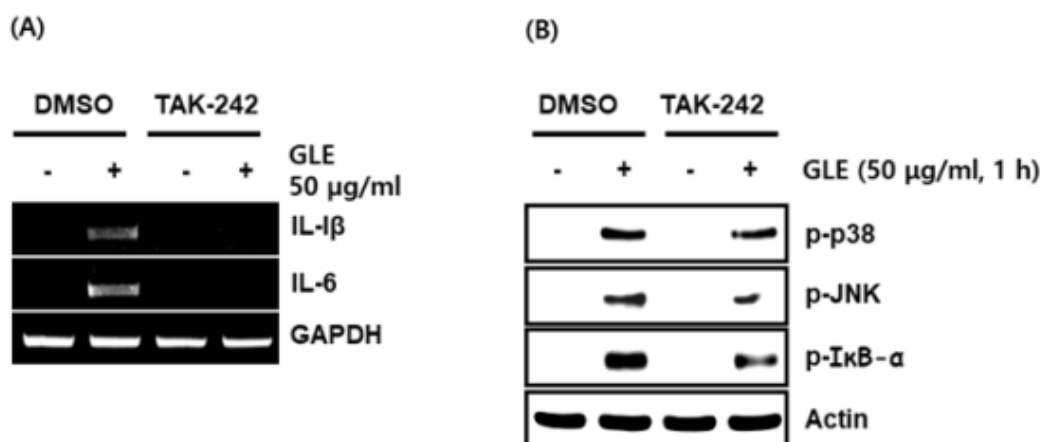


Fig. 4. Effect of TLR4 on GLE-mediated expression of immunomodulators through the activation of p38, JNK and NF- κ B. (A) The cells were pretreated with TAK-242 (5 μ M) for 2 h and then co-treated with GLE for 24 h. For RT-PCR analysis, total RNA was prepared. GAPDH was used as internal control for RT-PCR. (B) RAW264.7 cells were pretreatment with TAK-242 (5 μ M) for 2 h and then co-treated with GLE for 1 h. All cell lysates were subjected to SDS-PAGE and the Western blot was performed using antibodies against p-p38, p-JNK, p-I κ B- α or actin. Actin was used as internal control for Western blot analysis.

The authors apologize this mistake.