



ARTICLE

A Non-yeast Kefir-like Fermented Milk Development with *Lactobacillus acidophilus* KCNU and *Lactobacillus brevis* Bmb6

Bomee Lee^{1,2,†}, Cheng-Chung Yong^{3,†}, Hae-Chang Yi¹, Saehun Kim^{2,*}, and Sejong Oh^{3,*}

¹Samik Dairy & Food Co. Ltd, Seoul 06195, Korea

²College of Life Sciences and Biotechnology, Korea University, Seoul 02841, Korea

³Division of Animal Science, Chonnam National University, Gwangju 61186, Korea

OPEN ACCESS

Received March 3, 2020

Revised March 27, 2020

Accepted April 6, 2020

*Corresponding author :

Saehun Kim
College of Life Sciences and Biotechnology,
Korea University, Seoul 02841, Korea
Tel: +82-2-3290-3055
Fax: +82-2-3290-3506
E-mail: saehkim@korea.ac.kr

Sejong Oh
Division of Animal Science, Chonnam
National University, Gwangju 61186, Korea
Tel: +82-62-530-2116
Fax: +82-62-530-2129
E-mail: soh@chonnam.ac.kr

*ORCID

Bomee Lee
<https://orcid.org/0000-0003-1954-5046>
Cheng-Chung Yong
<https://orcid.org/0000-0003-0531-6381>
Hae-Chang Yi
<https://orcid.org/0000-0001-7042-2629>
Saehun Kim
<https://orcid.org/0000-0002-0990-2268>
Sejong Oh
<https://orcid.org/0000-0002-5870-3038>

† These authors contributed equally to this work .

Abstract The use of yeast assist kefir fermentation, but also can cause food spoilage if uncontrolled. Hence, in this study, the microbial composition of an existing commercial kefir starter was modified to produce a functional starter, where *Lactobacillus acidophilus* KCNU and *Lactobacillus brevis* Bmb6 were used to replace yeast in the original starter to produce non-yeast kefir-like fermented milk. The functional starter containing *L. acidophilus* KCNU and *L. brevis* Bmb6 demonstrated excellent stability with 10^{10} CFU/g of total viable cells throughout the 12 weeks low-temperature storage. The newly developed functional starter also displayed a similar fermentation efficacy as the yeast-containing control starter, by completing the milk fermentation within 12 h, with a comparable total number of viable cells (10^8 CFU/mL) in the final products, as in control. Sensory evaluation revealed that the functional starter-fermented milk highly resembled the flavor of the control kefir, with enhanced sourness. Furthermore, oral administration of functional starter-fermented milk significantly improved the disease activity index score by preventing drastic weight-loss and further deterioration of disease symptoms in DSS-induced mice. Altogether, *L. acidophilus* KCNU and *L. brevis* Bmb6 have successfully replaced yeast in a commercial starter pack to produce a kefir-like fermented milk beverage with additional health benefits. The outcome of this study provides an insight that the specific role of yeast in the fermentation process could be replaced with suitable probiotic candidates.

Keywords yeast, kefir, starter culture, fermentation, *Lactobacillus*

Introduction

Kefir, an acidic-alcoholic fermented milk product with an acidic taste and a creamy consistency, is produced by fermenting milk with a complex mixture of microorganisms, consisting of acetic acid bacteria, lactic acid bacteria, and yeast, at 25°C–28°C. Among the complex microbial composition, *Lactobacillus* spp., is the dominant species in the kefir microbial population, accounting for up to 80% of all

microorganisms, while the rest is represented by *Bifidobacterium* sp., *Lactococcus* sp., and yeast (Miguel et al., 2010; Witthuhn et al., 2004). Blooming reports on the health-promoting effects of kefir resulting in an emerging trend for the use of kefir as a healthy and rehydrating beverage (de LeBlanc et al., 2007; Hertzler & Clancy, 2003; Huseini et al., 2012; Liu et al., 2005, 2006; Lopitz-Otsoa et al., 2006; Matsuu et al., 2003).

Yeast in kefir can play a double role. The production of carbon dioxide (CO₂) and ethanol by yeast during alcoholic fermentation are responsible for the unique flavor in kefir (Adriana and Socaciu, 2008). However, uncontrolled growth and the excess production of CO₂ and ethanol through secondary alcoholic fermentation in yeast could lead to off-flavor, accumulation of CO₂, leading to swollen containers during storage and packaging, eventually blowing off the package (Kwak et al., 1996; O'Brien et al., 2016). As food safety has become a primary global concern, food spoilage as in the accumulation of CO₂ at the headspace of kefir has become an obstacle for the rapid economic growth and industry development (Danilović et al., 2018).

Hence, strain selection is essential to the production of a unique starter culture that could maintain the traditional attributes of the product while improving its aroma, safety, shelf-life, and functional benefits of the product. In this study, a new functional starter was developed by replacing yeast in a commercial starter with two functional probiotic strains, the bacteriocin-producing *L. acidophilus* KCNU and the colitis-ameliorating *L. brevis* Bmb6, for the production of kefir-like fermented milk with additional health benefits.

Materials and Methods

Cultivation of microorganisms

Twelve starter microorganisms (*Bifidobacterium longum*, *Lactobacillus casei*, *Lactobacillus plantarum*, *Lactobacillus acidophilus*, *Lactobacillus bulgaricus*, *Lactobacillus fermentum*, *Lactobacillus reuteri*, *Streptococcus thermophilus*, three *Lactococcus lactis* spp., and *Saccharomyces cerevisiae*) were provided by Samik Dairy & Food Co. Ltd, Gangnam-gu, Seoul, Korea. The bacteriocin-producing *Lactobacillus acidophilus* KCNU was obtained from the Korean Culture Center of Microorganisms, Seodaemun-gu, Seoul, Korea. *Lactobacillus brevis* Bmb6 with prominent anti-inflammatory effects was isolated from kimchi (Shin, 2017). All *Lactobacillus* strains were cultivated and maintained in MRS broth at 37°C; *Lactococcus* strains were cultivated and maintained in M17-lactose broth at 32°C; *Streptococcus* strains were cultivated and maintained in M17 broth 43°C; *Bifidobacterium longum* was cultivated and maintained in BL broth at 37°C under anaerobic condition; Yeast (*S. cerevisiae*) was cultivated and maintained in YGC broth at 28°C.

Stability assessment of bacteriocin from *L. acidophilus* KCNU

The crude bacteriocin was extracted from *L. acidophilus* KCNU, as described previously (Oh et al., 2008). *L. acidophilus* KCNU was cultured in MRS broth at 37°C for 18 h, followed by centrifugation at 6,000×g for 30 min at 4°C. Cell-free supernatant was collected as crude bacteriocin, and the pH was adjusted to 7.0 using 10 N NaOH. The crude protein was subjected to filtration through a 0.45 µm filter, heat-treated, and vacuum-dried or freeze-dried before being evaluated for its antimicrobial activity by the spot-on-lawn method (Ahn and Stiles, 1990). The antimicrobial activity of the crude bacteriocin was expressed as arbitrary units (AU) per mL of crude bacteriocin.

Stability of the functional starters

The microbial composition of the control starter and the non-yeast functional starter were tabulated in Table 1. All strains

Table 1. Composition of lactic acid bacteria (LAB) strains in the control and functional starter cultures used in this study

Control	Functional starter
<i>Bifidobacterium longum</i> ¹⁾	<i>Bifidobacterium longum</i> ¹⁾
<i>Lactobacillus casei</i> ¹⁾	<i>Lactobacillus casei</i> ¹⁾
<i>Lactobacillus plantarum</i> ¹⁾	<i>Lactobacillus plantarum</i> ¹⁾
<i>Lactobacillus acidophilus</i> ¹⁾	<i>Lactobacillus acidophilus</i> ¹⁾
<i>Lactobacillus bulgaricus</i> ¹⁾	<i>Lactobacillus bulgaricus</i> ¹⁾
<i>Lactobacillus fermentum</i> ¹⁾	<i>Lactobacillus fermentum</i> ¹⁾
<i>Lactobacillus reuteri</i> ¹⁾	<i>Lactobacillus reuteri</i> ¹⁾
<i>Streptococcus thermophilus</i> ¹⁾	<i>Streptococcus thermophilus</i> ¹⁾
<i>Lactococcus lactis</i> ssp. <i>lactis</i> ¹⁾	<i>Lactococcus lactis</i> ssp. <i>lactis</i> ¹⁾
<i>Lactococcus lactis</i> ssp. <i>cremoris</i> ¹⁾	<i>Lactococcus lactis</i> ssp. <i>cremoris</i> ¹⁾
<i>Lactococcus lactis</i> ssp. <i>lactis</i> biovar. <i>diacetylactis</i> ¹⁾	<i>Lactococcus lactis</i> ssp. <i>lactis</i> biovar. <i>diacetylactis</i> ¹⁾
<i>Saccharomyces cerevisiae</i> ¹⁾	<i>Lactobacillus acidophilus</i> KCNU ²⁾
	<i>Lactobacillus brevis</i> Bmb6 ³⁾

¹⁾ Strains were provided by Samik Dairy & Food Co. Ltd, Seoul, Korea.

²⁾ *Lactobacillus acidophilus* KCNU was obtained from Korean Culture Center of Microorganisms, KCCM10753P.

³⁾ *Lactobacillus brevis* Bmb6 was obtained from Chonnam National University (Shin, 2017).

were cultured for 1–2 days to reach 10^{10} CFU/mL. Cell pellets were collected via centrifugation at $3,000\times g$ for 30 min. Cell pellet from each strain was mixed and resuspended in 40% (v/v) glycerol in reconstituted skim milk as cryoprotectant. The mixture was then subjected to freeze-drying for 72 h. The freeze-dried starter powder was vacuum packed in an aluminum-coated vinyl pack. The starter was either stored at -20°C (frozen storage) or 5°C (cold storage) for 12 weeks, and the total number of viable cells was determined by at every 4 weeks interval. The total number of viable cells was the average of the viable count of *Lactobacillus*, *Lactococcus*, *Bifidobacterium*, *Streptococcus*, and yeast. *Lactobacillus* strains were cultivated in MRS-lactose agar at 37°C under anaerobic condition for 48 h; *Lactococcus* strains were cultivated in M17-lactose agar at 32°C under anaerobic condition for 24 h; *Bifidobacterium longum* was cultivated in BL agar at 37°C under anaerobic condition for 48 h; *Saccharomyces cerevisiae* was cultivated in PDA agar at 28°C under anaerobic condition for 72 h.

Preparation of functional starter-fermented milk

Sterilized milk was inoculated using 0.02% (w/w) of the functional starter pack (10^{10} CFU/g) and fermented at 25°C under normal atmospheric conditions for approximately 24 h. The control consisted of sterilized milk inoculated with 2% (w/w) of original commercial starter (10^7 CFU/g) and fermented at 25°C under normal atmospheric conditions until the pH 4.5 was reached. The pH and the total number of viable cells of fermented milk were evaluated and recorded at every 4 h interval. The total number of viable cells was the average of the viable count of *Lactobacillus*, *Lactococcus*, *Bifidobacterium*, *Streptococcus*, and yeast cultivated in different media and culture conditions. The final products were evaluated by 50 regular fermented milk consumers, consisting of university students and staff, to determine the general public acceptability. The fermented milk was scored 1 (worst) to 7 (best) according to taste, texture, and sourness of the beverages.

Colitis-ameliorating assessment of functional starter-fermented milk

Seven-weeks old female ICR mice were obtained from the Daehan Lab (Daejeon, Korea) and acclimated for one week in the Animal Housing Unit (room temperature of 22-25°C, 50%–60% humidity, and 12 h light/dark cycle; standard mouse chow-diet and water were provided *ad libitum*), according to the guidelines provided by the Institutional Animal Care and Use Committee of the Chonnam National University (CNU-IACUC-YB-2016-47; Chonnam National University, Gwangju, Korea).

The control and treatment groups were administered with PBS for the first seven days. Drinking water was then replaced with 4% (w/v) dextran sulfate sodium (DSS) water from day-7 to day-14 to induce colitis in mice. The control group was administered with PBS through oral gavage from the beginning until the end day-14, while the samples group was administered with 0.1 g of functional starter-fermented milk through oral gavage from day-7 to day-14. Bodyweight, fecal condition, and disease activity index (DAI) was assessed daily based on a scoring system, as shown in Table 2 (Herías et al., 2005).

Statistical analysis

All data were expressed as mean±SD. Paired-sample t-test was performed using SPSS[®] version 20 (IBM[®] SPSS[®] Statistics, USA), with a $p < 0.05$ indicating statistical significance.

Results

Stability of bacteriocin from *L. acidophilus* KCNU

The antimicrobial activity of crude bacteriocin produced by *L. acidophilus* KCNU was not affected by heat treatment, vacuum concentration, or freeze-drying process was maintained at 6,400 AU/mL, regardless of the treatment process (Table 3), indicating the ability of crude bacteriocin to withstand downstream processes for industrial application.

Stability of starters

Upon the freeze-drying process, the functional starter achieved total viability at 10^{10} CFU/g, and the number fluctuated within the range of 10^{10} CFU/g throughout the study (Fig. 1). At the end of 12 weeks storage period, functional starter stored at -20°C contained 10.66 ± 0.11^{10} CFU/g of total viable cells and 10.38 ± 0.06^{10} CFU/g of total viable cells for functional starter stored at 5°C . indicating their stability over long-term storage at low temperatures.

Table 2. Scoring system for disease activity index¹⁾

Score	Weight loss (%)	Stool consistency ²⁾	Gross bleeding
0	None	Normal	Negative
1	1–5	Loose	Negative
2	5–10	Loose	Hemocult positive
3	11–15	Diarrhoea	Hemocult positive
4	>15	Diarrhoea	Bleeding

¹⁾ Disease activity index, $\text{DAI} = (\text{Score of weight loss} + \text{Stool consistency} + \text{Gross bleeding}) / 3$

²⁾ Normal stool, well-formed pellets; loose, pasty stool that does not stick to the anus; diarrhoea, liquid stool that sticks to anus.

Table 3. Antimicrobial activity of crude bacteriocin produced by *Lactobacillus acidophilus* KCNU

Sample	Treatment condition	Antimicrobial activity ¹⁾ (AU/mL)
Filtration	Filtration through a 0.45 µm membrane	6,400
Heat-treatment	Heat treatment (65°C for 20 min) followed by 0.45 µm membrane filtration	6,400
Vacuum concentration	Vacuum evaporation at 55°C	6,400
Freeze-drying	Heat treatment (65°C for 20 min) followed by freeze-drying (-50°C, 6 torr)	6,400

¹⁾ Antimicrobial activity was expressed as arbitrary unit per milliliter (AU/mL) using the formula $(1,000 \mu\text{L}/10 \mu\text{L}) \times \text{reciprocal of the highest dilution showing visible inhibitory activity}$.

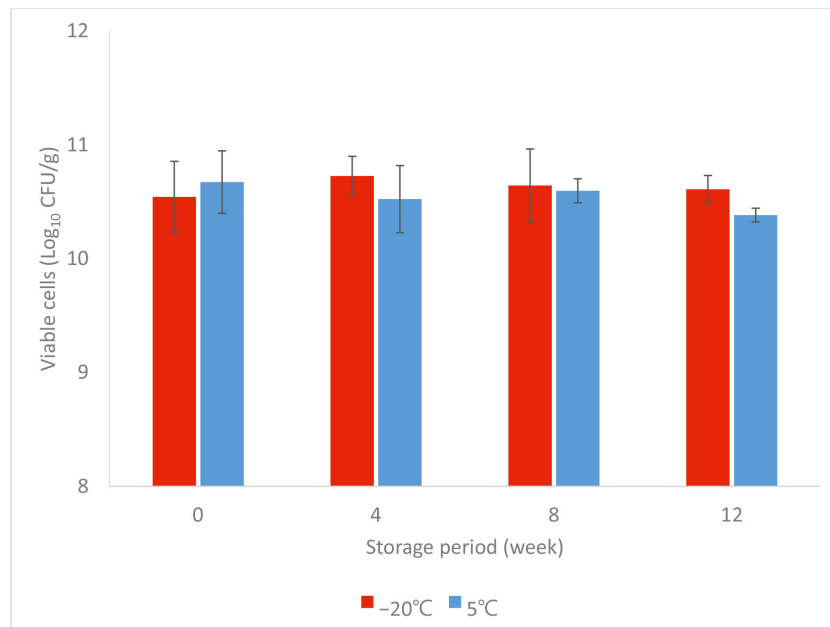


Fig. 1. The total number of viable cells in starter cultures during storage at -20°C and 5°C. Results are expressed as the mean±SD of three independent experiments (n=3). Paired t-test was performed with no significant differences between the sample (p>0.05).

Characteristics of the functional starter-fermented milk

The fermentation efficacy of the functional starter was comparable to the control starter, both achieved pH 4.5, the optimal pH of kefir at a time near 12 h (Fig. 2a). Moreover, at 12 h, both fermented milks have a similar number of viable *Lactobacillus* count, with 8.94 ± 0.50^{10} CFU/mL in control and 8.99 ± 0.35^{10} CFU/mL in functional starter-fermented milk (Fig. 2b). Also, the sensory evaluation revealed the acceptance of the functional starter-fermented milk by the panels, with a similar texture, sourness, and taste as the control kefir beverage (Fig. 3).

Mitigation effects of the functional fermented milk on colitis model

In this experiment, treatment group mice were administered with functional starter-fermented milk, which contained the bacteriocin-producing *L. acidophilus* KCNU and the anti-inflammatory *L. brevis* Bmb6 strains. Upon DSS induction, the control group mice exhibited a drastic decrease in body weight on day-9 and continued until the end of the day-14 (Fig. 4a). In contrast, the body weight of the treatment group mice was decreased gradually throughout the study, but the reduction rate was lower, as compared to the control group. The control group had a DAI score of 0.4 on day-8, which showed a gradual

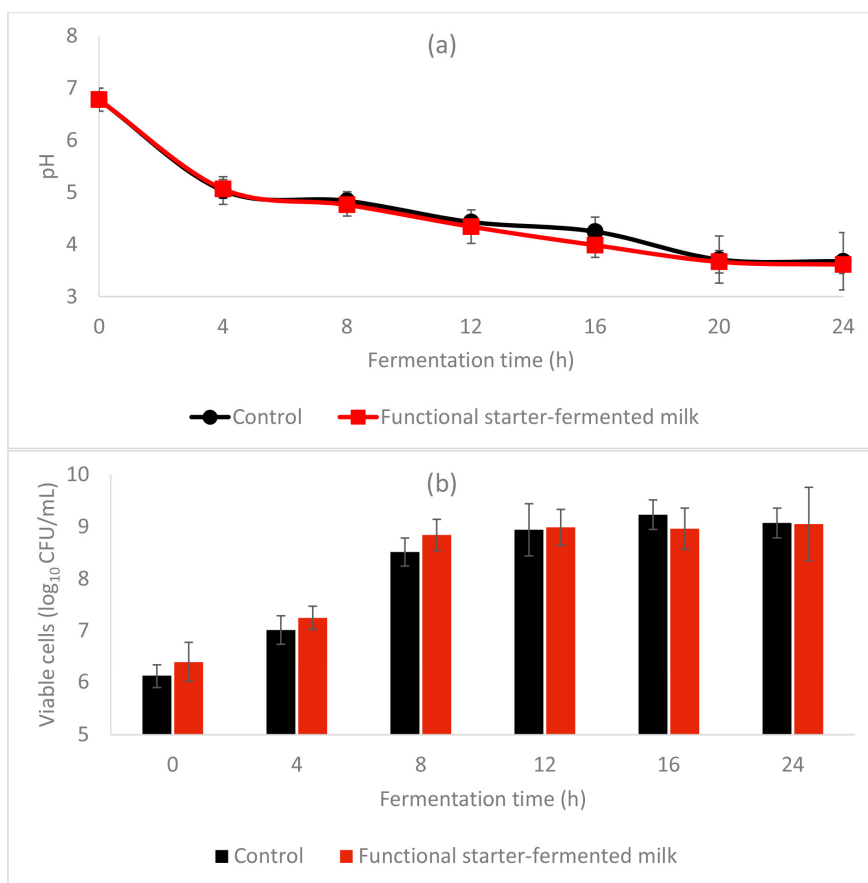


Fig. 2. Change in the (a) pH and (b) the total number of viable count during milk fermentation with different starters, at 25°C for 24 h. Results are expressed as the mean±SD of three independent experiments (n=3).

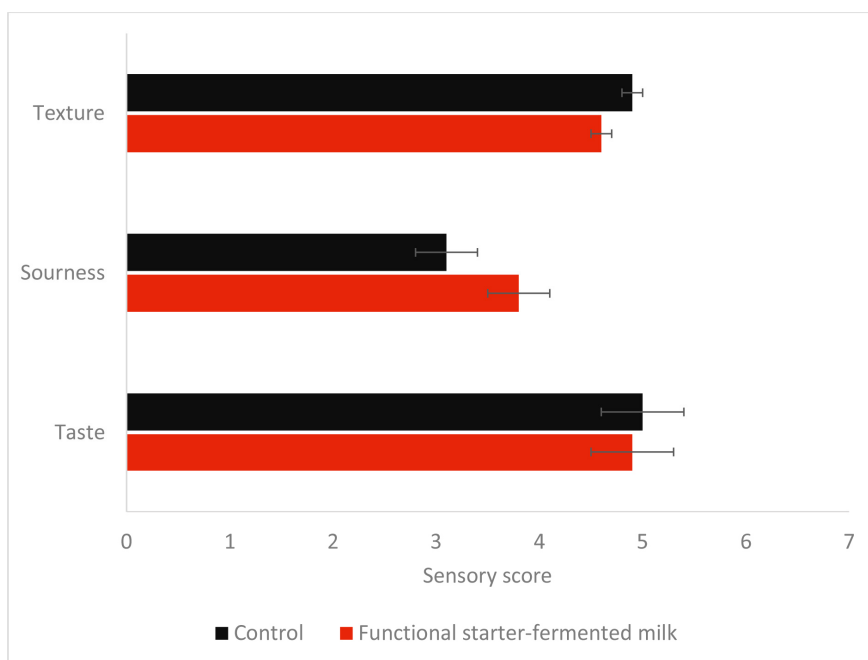


Fig. 3. Sensory evaluation of fermented milk with different starters. Results are expressed as the mean±SD of 50 individual subjects (n=50). Paired t-test was performed with no significant differences between the sample ($p>0.05$).

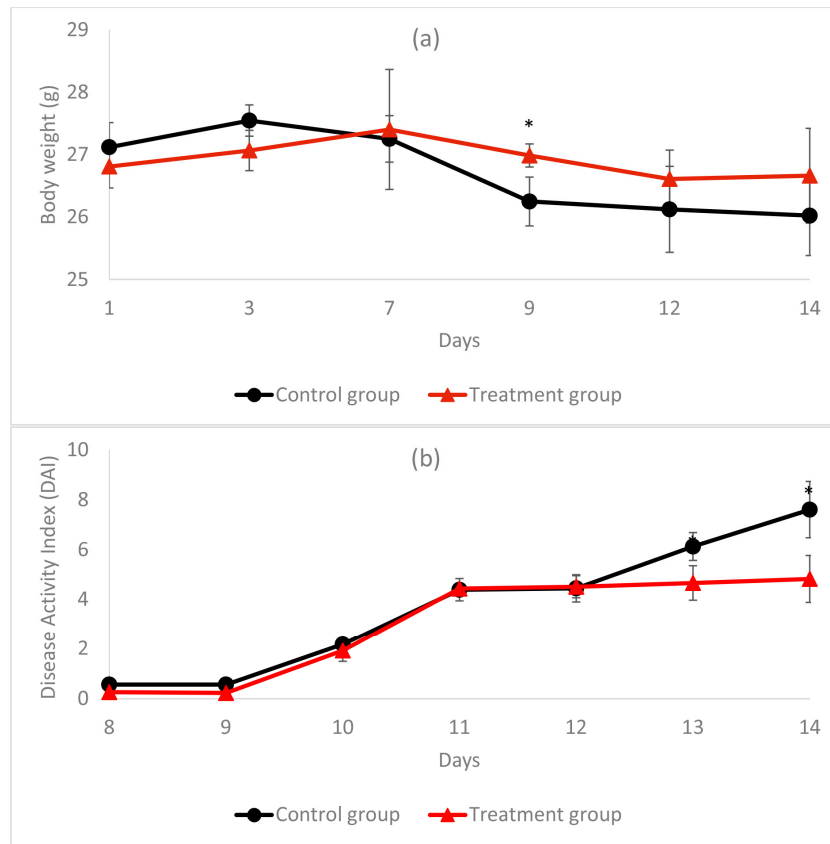


Fig. 4. Changes in the (a) body weight and (b) disease activity index of dextran sulfate sodium-induced mice. Results are expressed as the mean \pm SD of five independent experiments (n=5). Paired t-test was performed. The asterisk (*) indicates significant differences between the control and kefir group ($p < 0.05$). Treatment group: Functional starter-fermented milk-fed DSS-mice; Control group: yeast-starter kefir-fed DSS-mice.

increase in the DAI score to 7.6 at day-14 (Fig. 4b). Meanwhile, the DAI score of treatment group mice began to increase from 2.0 on day-10 and fluctuated between 4.3 to 4.6 until day-14. Whereas, the DAI score of control group mice continued to increase with DAI score of 7.6 at the end of the study. These results were showing that the ability of functional starter-fermented milk to prevent further deterioration of colitis-symptoms in treatment group mice, as compared to the control.

Discussion

The microbial composition of a starter greatly affects the flavor, nutritional value, health-promoting effects, and shelf life of a fermented dairy product. The use of yeast as a member of the starter culture plays a double role. Yeast could either positively or negatively affect the quality of dairy products, depending on their interaction with other starter strains and the fermentation conditions (Viljoen, 2001). For instance, formation and accumulation of CO₂ in the containers, leading to swollen and bloated containers during storage, had shortened the shelf-life of the products and causing economic loss to the food manufacturer as well (Danilović et al., 2018; Foschino et al., 1993; Kwak et al., 1996; O'Brien et al., 2016; Sarkar, 2008). Hence, in the present study, the use of yeast in starter was replaced by two functional *Lactobacillus* strains, *L. acidophilus* KCNU and *L. brevis* Bmb6, for production of a health-promoting kefir-like fermented milk.

L. acidophilus KCNU, a bacteriocin-producing strain, isolated from the porcine small intestine, has been reported to be

effective against various pathogens, including *Bacillus cereus*, *Enterococcus aerogenes*, *Escherichia coli*, *Listeria monocytogenes*, *Staphylococcus aureus*, *Pseudomonas aeruginosa*, and *Yersinia enterocolitica*. In addition, *L. acidophilus* KCNU also reported exerting prominent acid and bile tolerance and cholesterol-lowering ability, which suggests its use for food fermentation or pharmaceutical (Oh et al., 2008). Hence, the use of *L. acidophilus* KCNU as a member of the starter could greatly improve the safety by reducing the risk of contamination of the starter culture and spoilage on the end products, while assisting host to maintain balance gut homeostasis through suppressing the growth of gut pathogens. It is crucial for the bacteriocin from *L. acidophilus* to resist the harsh downstream dehydration processes, including heat-treatment, vacuum drying, or freeze-drying process. In this study, upon the dehydration treatments, the crude bacteriocin from *L. acidophilus* KCNU able to maintain a stable antimicrobial activity at 6,400 AU/mL, similar to the antimicrobial activity of the unprocessed crude bacteriocin, suggesting its suitability to be used as a starter culture.

The development of starter culture is crucial for the production of fermented foods as it allows a consistent production of fermented foods. It is of utmost importance to maintain the viability of the bacteria and prolong the shelf-life of commercial starter culture (Taskila, 2017). The newly developed *L. acidophilus* KCNU and *L. brevis* Bmb6 containing functional starter exhibited excellent stability by maintaining the total number of viable cells at 10^{10} CFU/g throughout the 12 weeks storage period, at -20°C and 5°C . Freeze-drying is one of the most commonly practiced preservation techniques for commercial starter culture production, owing to its capability to maintain a high number of viable bacterial cells and to prolong the shelf-life of the product (Taskila, 2017). Based on our results, frozen storage is preferable to cold storage when considering storing the product for a more extended period (>12 weeks).

Ideally, industrial kefir fermentation should be completed within 8 h, with the final pH of 4.5, to meet the smooth and continuous downstream procedures such as the cooling and packaging process (Lee et al., 2018). Certain yeast strains were capable of assimilating lactate, producing alkaline end products that could neutralize the acids, thereby prolong the fermentation period (Potter and Hotchkiss, 1995; Soulides, 1955). However, the replacement of yeast with *L. acidophilus* KCNU and *L. brevis* Bmb6 did not improve the fermentation efficacy of the functional starter. Also, the absence of yeast in the functional starter did not alter the total number of the viable count, with 10^8 CFU/mL upon completion of the milk fermentation, indicating the use of *L. acidophilus* KCNU and *L. brevis* Bmb6 did not affect the total number of viable cells in the fermented milk as in the control kefir. Meanwhile, sensory evaluation by regular fermented milk consumers revealed that the functional starter-fermented high resembled the control yeast-kefir in terms of the taste and texture of the fermented milk, with enhanced sourness taste.

Previously, the administration of *L. brevis* Bmb6 has been reported to effectively improve the symptoms of bowel inflammation in DSS-induced colitis mice (Shin, 2017). In this study, the colitis-ameliorating property of *L. brevis* Bmb6 remained in the end product, fermented milk after a series of industrial manufacturing processes. Administration of the functional starter-fermented milk prevented a drastic decrease in body weight of DSS-induced mice, thereby rendering further deterioration of colitis-symptoms in DSS-induced mice at the later stages (Day-13 and -14), suggesting that *L. brevis* Bmb6-containing fermented milk can mitigate the symptom of gastrointestinal disorders. This colitis ameliorating effects of *L. brevis* Bmb6 was attributed to enhance gut epithelium integrity, promote the recovery of epithelial cells, and suppress the pro-inflammatory cytokines, TNF- α , and IFN- γ (Shin, 2017).

In summary, a non-yeast functional starter has been developed by substituting yeast in a commercial starter with *L. acidophilus* KCNU and *L. brevis* Bmb6. The new functional starter demonstrated excellent storage stability and the functional starter-fermented milk high resembling the control yeast-kefir in terms of fermentation efficacy, total viable cells,

taste, and texture of the fermented milk, with enhanced sourness. Moreover, the functional starter-fermented milk retained the ability *L. brevis* Bmb6 in relieving intestinal inflammation. The outcome of this study provides an insight into the development of non-yeast starter for fermented dairy products through the use of other functional lactic acid bacteria.

Conflicts of Interest

The authors declare no potential conflicts of interest.

Acknowledgements

This study was conducted with the support from the ‘R&D Rediscovery Project’ by the Korea Institute for Advancement of Technology, overseen by the Korean Ministry of Trade, Industry and Energy (N0002488) and also support from the Basic Science Research Program through the National Research Foundation of Korea (NRF) funded by the Minister of Education, Science, and Technology (NRF-2019R1A2C108764811).

Author Contributions

Conceptualization: Oh S, Kim S. Data curation and formal analysis: Lee B, Yong CC, Yi HC. Methodology: Lee B, Yi HC. Software: Lee B, Yi HC. Validation: Lee B, Yi HC. Investigation: Lee B, Yi HC. Writing - original draft: Yong CC. Writing - review & editing: Lee B, Yong CC, Yi HC, Kim S, Oh S.

Ethics Approval

The animal study was performed with the approval from the Institutional Animal Care and Use Committee of the Chonnam National University (CNU-IACUC-YB-2016-47). This article does not require IRB approval because there are no human participants.

References

- Adriana P, Socaciu C. 2008. Probiotic activity of mixed cultures of kefir’s lactobacilli and non-lactose fermenting yeasts. *Bull UASVM Agric* 65:329-334.
- Ahn C, Stiles ME. 1990. Antibacterial activity of lactic acid bacteria isolated from vacuum-packaged meats. *J Appl Bacteriol* 69:302-310.
- Danilović B, Savić D, Cocola L, Fedel M, Poletto L. 2018. Determination of CO₂ content in the headspace of spoiled yogurt packages. *J Food Qual* 2018:8121606.
- de LeBlanc AM, Matar C, Farnworth E, Perdigon G. 2007. Study of immune cells involved in the antitumor effect of kefir in a murine breast cancer model. *J Dairy Sci* 90:1920-1928.
- Foschino R, Garzaroli C, Ottogalli G. 1993. Microbial contaminants cause swelling and inward collapse of yoghurt packs. *Lait* 73:395-400.
- Herías MV, Koninkx JF, Vos JG, Huis In’t Veld JH, Van Dijk JE. 2005. Probiotic effects of *Lactobacillus casei* on DSS-

- induced ulcerative colitis in mice. *Int J Food Microbiol* 103:143-155.
- Hertzler SR, Clancy SM. 2003. Kefir improves lactose digestion and tolerance in adults with lactose maldigestion. *J Am Diet Assoc* 103:582-587.
- Huseini HF, Rahimzadeh G, Fazeli MR, Mehrasma M, Salehi M. 2012. Evaluation of wound healing activities of kefir products. *Burns* 38:719-723.
- Kwak HS, Park SK, Kim DS. 1996. Biostabilization of kefir with a nonlactose-fermenting yeast. *J Dairy Sci* 79:937-942.
- Lee B, Yi HC, Moon YI, Oh S. 2018. Development of a functional mixed-starter culture for kefir fermentation. *J Milk Sci Biotechnol* 36:178-185.
- Liu JR, Chen MJ, Lin CW. 2005. Antimutagenic and antioxidant properties of milk-kefir and soymilk-kefir. *J Agric Food Chem* 53:2467-2474.
- Liu JR, Wang SY, Chen MJ, Chen HL, Yueh PY, Lin CW. 2006. Hypocholesterolaemic effects of milk-kefir and soymilk-kefir in cholesterol-fed hamsters. *Br J Nutr* 95:939-946.
- Lopitz-Otsoa F, Rementeria A, Elguezabal N, Garaizar J. 2006. Kefir: A symbiotic yeasts-bacteria community with alleged healthy capabilities. *Rev Iberoam Micol* 23:67-74.
- Matsuo M, Shichijo K, Okaichi K, Wen CY, Fukuda E, Nakashima M, Nakayama T, Shirahata S, Tokumaru S, Sekine I. 2003. The protective effect of fermented milk kefir on radiation-induced apoptosis in colonic crypt cells of rats. *J Radiat Res* 44:111-115.
- Miguel MGCP, Cardoso PG, de Assis Lago L, Schwan RF. 2010. Diversity of bacteria present in milk kefir grains using culture-dependent and culture-independent methods. *Food Res Int* 43:1523-1528.
- O'Brien KV, Aryana KJ, Prinyawiwatkul W, Ordonez KMC, Boeneke CA. 2016. The effects of frozen storage on the survival of probiotic microorganisms found in traditionally and commercially manufactured kefir. *J Dairy Sci* 99:7043-7048.
- Oh S, Han K, Kim Y, Kim K, Kim S. 2008. *Lactobacillus acidophilus* KCNU. KR Patent KR100871904B1.
- Potter NN, Hotchkiss JH. 1995. Fermentation and other uses of microorganisms. In *Food science*. 5th ed. Potter NN, Hotchkiss JH (ed). Springer Science & Business Media, Boston, MA, USA. pp 264-278
- Sarkar S. 2008. Biotechnological innovations in kefir production: A review. *Br Food J* 110:283-295.
- Shin MY. 2017. Anti-inflammatory effects of *Lactobacillus brevis* BMB6 in dextran sulfate sodium-induced mice. M.S. thesis, Chonnam National Univ., Gwangju, Korea.
- Soulides DA. 1955. A synergism between yoghurt bacteria and yeasts and the effect of their association upon the viability of the bacteria. *Appl Microbiol* 3:129-131.
- Taskila S. 2017. Industrial production of starter cultures. In *Starter cultures in food production*. 1st ed. Speranza B, Bevilacqua A, Corbo MR, Sinigaglia M (ed). John Wiley & Sons, Chichester, UK. pp 79-100.
- Viljoen BC. 2001. The interaction between yeasts and bacteria in dairy environments. *Int J Food Microbiol* 69:37-44.
- Witthuhn RC, Schoeman T, Britz TJ. 2004. Isolation and characterization of the microbial population of different South African kefir grains. *Int J Dairy Technol* 57:33-37.