

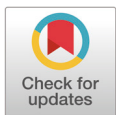
# Signatures of positive selection underlying beef production traits in Korean cattle breeds

Zewdu Edea<sup>1</sup>, Kyoung Sub Jung<sup>2</sup>, Sung-Sub Shin<sup>3</sup>, Song-Won Yoo<sup>3</sup>,  
 Jae Won Choi<sup>2</sup> and Kwan-Suk Kim<sup>1\*</sup>

<sup>1</sup>Department of Animal Science, Chungbuk National University, Cheongju 28644, Korea

<sup>2</sup>Institute of Livestock and Veterinary Research, Cheongju 28153, Korea

<sup>3</sup>Korea Institute for Animal Products Quality Evaluation, Sejong 30100, Korea



Received: Oct 24, 2019  
 Revised: Mar 4, 2020  
 Accepted: Mar 15, 2020

#### \*Corresponding author

Kwan-Suk Kim  
 Department of Animal Science,  
 Chungbuk National University,  
 Cheongju 28644, Korea.  
 Tel: +82-43-261-2547  
 E-mail: kwanskim@chungbuk.ac.kr

Copyright © 2020 Korean Society of Animal Sciences and Technology. This is an Open Access article distributed under the terms of the Creative Commons Attribution Non-Commercial License (<http://creativecommons.org/licenses/by-nc/4.0/>) which permits unrestricted non-commercial use, distribution, and reproduction in any medium, provided the original work is properly cited.

#### ORCID

Zewdu Edea  
<https://orcid.org/0000-0003-2343-4832>  
 Kyoung Sub Jung  
<https://orcid.org/0000-0002-9145-9794>  
 Sung-Sub Shin  
<https://orcid.org/0000-0001-5684-6636>  
 Song-Won Yoo  
<https://orcid.org/0000-0002-7650-0779>  
 Jae Won Choi  
<https://orcid.org/0000-0002-9632-8179>  
 Kwan-Suk Kim  
<https://orcid.org/0000-0002-5895-4398>

#### Competing interests

No potential conflict of interest relevant to this article was reported.

#### Funding sources

This work was supported by Korea Institute of Planning and Evaluation for

#### Abstract

The difference in the breeding programs and population history may have diversely shaped the genomes of Korean native cattle breeds. In the absence of phenotypic data, comparisons of breeds that have been subjected to different selective pressures can aid to identify genomic regions and genes controlling qualitative and complex traits. In this study to decipher genetic variation and identify evidence of divergent selection, 3 Korean cattle breeds were genotyped using the recently developed high-density GeneSeek Genomic Profiler F250 (GGP-F250) array. The three Korean cattle breeds clustered according to their coat color phenotypes and breeding programs. The Heugu breed reliably showed smaller effective population size at all generations considered. Across the autosomal chromosomes, 113 and 83 annotated genes were identified from Hanwoo-Chikso and Hanwoo-Heugu comparisons, respectively of which 16 genes were shared between the two pairwise comparisons. The most important signals of selection were detected on bovine chromosomes 14 (24.39–25.13 Mb) and 18 (13.34–15.07 Mb), containing genes related to body size, and coat color (*XKR4*, *LYN*, *PLAG1*, *SDR16C5*, *TMEM68*, *CDH15*, *MC1R*, and *GALNS*). Some of the candidate genes are also associated with meat quality traits (*ACSF3*, *EIF2B1*, *BANP*, *APCDD1*, and *GALM*) and harbor quantitative trait locus (QTL) for beef production traits. Further functional analysis revealed that the candidate genes (*DBI*, *ACSF3*, *HINT2*, *GBA2*, *AGPAT5*, *SCAP*, *ELP6*, *APOB*, and *RBL1*) were involved in gene ontology (GO) terms relevant to meat quality including fatty acid oxidation, biosynthesis, and lipid storage. Candidate genes previously known to affect beef production and quality traits could be used in the beef cattle selection strategies.

**Keywords:** Candidate genes, Korean cattle, Selection signatures, GGP-F250

## INTRODUCTION

Cattle production in the Korean Peninsula has a long history, dates back to over 5,000 years [1]. Evidence on the origin and domestication of Korean cattle has been debatable. Genetic evidence based on mtDNA analysis has shown that Korean cattle are maternally traced back to taurine [2]. A genome-wide study using nuclear single nucleotide polymorphism (SNP) markers, however, have detect-

Technology in Food, Agriculture, Forestry (IPET) through "Development of on-site verification system and device for Identifying Hanwoo beef" Project, funded by Ministry of Agriculture, Food and Rural Affairs, Korea (318015-3).

#### Acknowledgements

The authors are grateful to the anonymous reviewers for their useful suggestions and Dr. Rasel Uzzaman for technical assistance for manuscript revision.

#### Availability of data and material

Upon reasonable request, the datasets of this study can be available from the corresponding author.

#### Authors' contributions

Conceptualization: Edea Z, Kim KS.  
 Data curation: Jung KS, Shin SS, You SW.  
 Formal analysis: Edea Z, Choi JW, Kim KS.  
 Methodology: Edea Z.  
 Software: Edea Z.  
 Validation: Edea Z, Kim KS.  
 Investigation: Edea Z, Kim KS.  
 Writing - original draft: Edea Z.  
 Writing - review & editing: Kim KS.

#### Ethics approval and consent to participate

This article does not require IRB/IACUC approval because there are no human and animal participants.

ed a substantial indicine introgression in Korean Hanwoo and Japanese Black cattle [3]. Korean indigenous cattle are characterized by different phenotypes and based on coat color phenotypes, which are broadly grouped into four sub-populations or breeds: Brown Hanwoo, Jeju Black, Black cattle (Heugu), and Brindle Hanwoo [1]. Of the four cattle breeds, the Brown Hanwoo is the predominant breed in terms of population size (3,000,000) and geographical distribution, whereas the population sizes of Chikso and Heugu were recently declined [4,5].

The national level genetic improvement program for carcass weight and marbling has been implemented for the Brown Hanwoo cattle for the few decades [1,6]. In line with the measurable changes achieved in growth traits over the last few decades, genome-wide selection scans and association studies of Korean cattle (Hanwoo) did detect putative candidate genes and quantitative trait locus (QTL) associated with carcass weight. For instance, QTL for carcass weight was reported on BTA4 and BTA14 (23–25 Mb) [7–9].

Unlike the Brown Hanwoo, the Black and Brindle cattle breeds have not been targets of strong artificial selection and improvement for specific beef traits; rather a selection against certain phenotypes (e.g., coat color) has led to a steep decline in their effective population sizes. The difference in the breeding programs and population history may have diversely shaped the genomes of Korean native cattle breeds. Assessment of the possible impacts of demographic events on the landscape of genetic diversity and population structure is of particular importance for the ongoing conservation program.

In the absence of phenotypic data, comparisons of breeds that have been subjected to different selective pressures can aid to identify genomic regions and genes controlling qualitative and complex traits. The commercial availability of a wide range of genome-wide SNP panels has been facilitated the fine mapping and detection of genes controlling complex quantitative traits. Previously selection signature scans and genome-wide association studies of Korean cattle have been employed Bovine SNP50 and high-density 777 K chips. In an attempt to identify signatures of divergent selection, we have genotyped three Korean cattle populations showing distinct phenotypes and subjected to different breeding programs using the recently developed GeneSeek Profiler F250 (GGP-F250) array [10].

## MATERIALS AND METHODS

Three native Korean cattle breeds Brown Hanwoo ( $n = 24$ ), Chikso (Brindle Hanwoo,  $n = 24$ ) and Heugu (Black Hanwoo,  $n = 24$ ) were sampled and genotyped with the GGP-F250 array, which contains 214677 SNPs. A GGP-F250 Bead Chip was built from diverse *Bos taurus* and *Bos indicus* breeds. The SNP markers were screened for the call rate  $> 90\%$ , minor allele frequency (MAF)  $> 0.01$  and call rate by sample  $> 90\%$ . Following the application of the above quality control criteria, 108675 autosomal SNP markers were retained and used for downstream analysis.

Genetic diversity was estimated for each breed using PLINK [11]. Inbreeding coefficient and animal relatedness were estimated as the proportion identity-by-descent (IBD) between sample pairs within the breed as a PI\_HAT value using the same package. A principal component analysis (PCA) was also performed on 108,675 SNPs using SNP and Variation Suite v8.5.0 (Golden Helix, Bozeman, MT, [www.goldenhelix.com](http://www.goldenhelix.com)). Linkage disequilibrium (LD) was estimated between adjacent SNPs. Inter-SNP distances were binned into different categories and estimates of  $r^2$  were averaged for each inter-SNP distance category. Effective population size ( $N_e$ ) in each breed was estimated from linkage disequilibrium using SNEP tool [12] with the default settings. Based on the population structure and PCA results,  $F_{ST}$  values were calculated between Hanwoo-Chikso, Hanwoo-Heugu, and Chikso-Heugu according to [13] in sliding windows of 20 SNPs. Windows

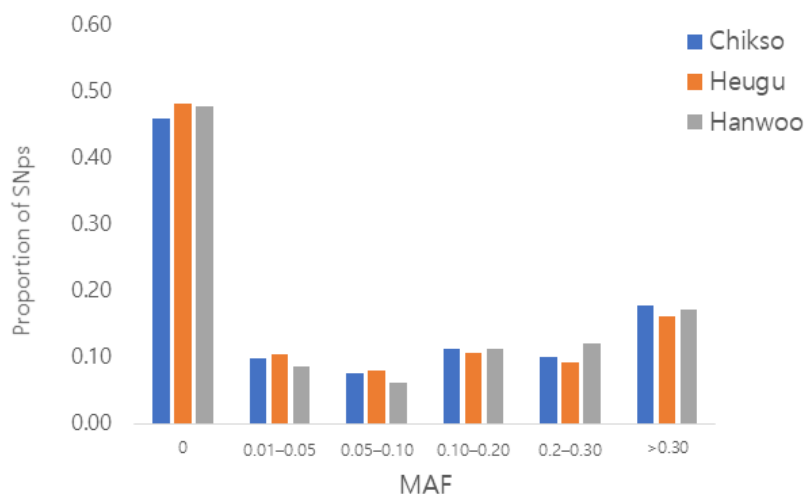
of the SNP were used to minimize the stochastic effect of single SNP.  $F_{st}$  values were converted to a standard normal distribution (ZFst). The SNP windows that display high genetic differentiations ( $ZF_{st} \geq 5$ ) were considered as candidates. Candidate genes within the top ZFst values were annotated using the Bovine UMD.3.1 genome assembly. QTL regions that overlapped with the identified candidate regions were searched from the cattle QTLdb (<http://www.animalgenome.org/cgi-bin/QTLdb/BT/index>).

## RESULTS AND DISCUSSION

### Genetic diversity, population structure, and demographic history

Of the total autosomal SNPs (191,789), 47% were found to be fixed across the three breeds. The percentage of SNPs with  $MAF > 5\%$  was 44%, 41%, and 44% in Hanwoo, Heugu, and Chikso, respectively. The proportion of polymorphic SNPs observed in the Korean cattle is nearly similar to the figure observed on GGP-F250 ([https://genomics.neogen.com/pdf/slicks/ag229\\_ggp\\_f250\\_array\\_flyer.pdf](https://genomics.neogen.com/pdf/slicks/ag229_ggp_f250_array_flyer.pdf)) for diverse cattle breeds (Fig. 1). This higher proportion of fixed SNPs in our study cattle breed could be explained by the fact that the GGPF-250 array largely contained functional variants (non-synonymous, frameshift and premature stop) having a functional effect or causative polymorphism and subject to selection. Previous studies have shown that functional SNPs (non-synonymous) had lower minor allele frequencies [14,15]. The SNP was considered as breed-specific when it was polymorphic ( $MAF > 0.05$ ) in the particular breed, but fixed in the other breeds [16]. The highest number of breed-specific SNPs (1784) was found in the Korean black cattle, while the Hanwoo breed had a lower number of breeds specific SNPs (925). The average  $MAF$  of breed-specific SNPs ranged from 0.09 in Chikso to 0.14 in Heugu. The SNPs identified as specific to one breed can be used for product traceability and breed discrimination/assignment.

To assess the consequences of artificial selection and demographic events in shaping the genetic constitution of Korean native cattle breeds, level of within breed genetic variability was assessed based on observed and expected heterozygosity. Results show that a deficiency of heterozygosity was detected in the three cattle populations. Specifically, the Korean black (Heugu) cattle retained the lowest level of within-breed genetic variation (Table 1). The observed heterozygosity in Han-



**Fig. 1. Distribution of minor allele frequencies in the three Korean cattle breeds.** MAF, minor allele frequency; SNP, single nucleotide polymorphism.

**Table 1. Genetic parameters in three Korean native cattle breeds**

Parameter	Chikso	Hanwoo	Heugu
$H_o$	0.30	0.30	0.28
$H_E$	0.28	0.28	0.26
$F$	-0.041	-0.045	-0.069
PI_HAT (IBS)	0.096	0.115	0.155
MAF	0.12	0.12	0.11
Number of breed specific SNPs	1,491	925	1,784
MAF			
Minimum	0.06	0.06	0.02
Maximum	0.46	0.30	0.48
Average	0.09	0.10	0.14
$N_e$ 13 generations ago	94	88	57

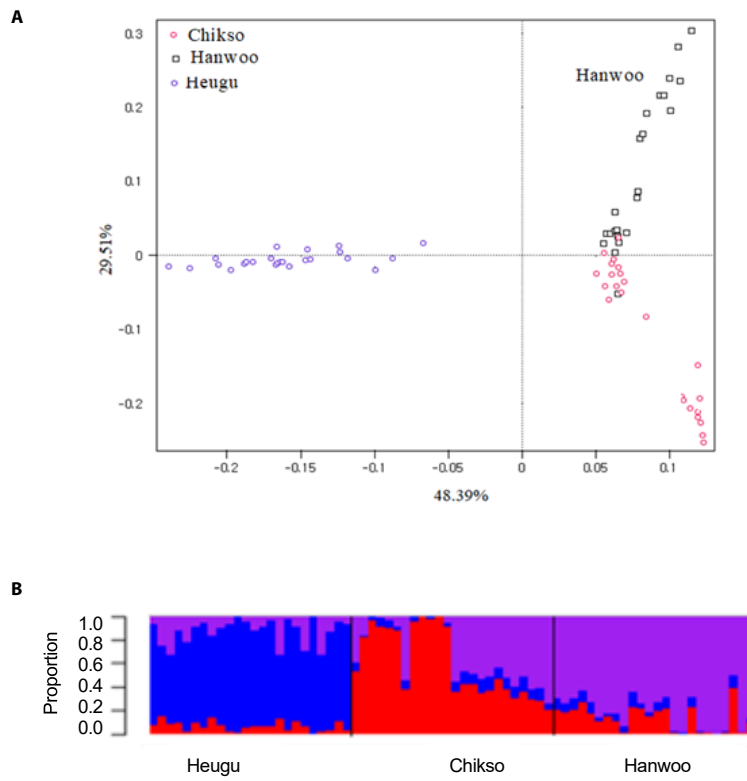
MAF, minor allele frequency; SNP, single nucleotide polymorphism;  $N_e$ , effective population size.

woo and Chikso are higher than the values (0.26–0.29) estimates from high-density SNPs [17], but far lower than the microsatellite (0.67) [5] and Bovine SNP50 BeadChip based estimates (0.38–0.44) [18]. The low level of genetic variability obtained from Heugu is possibly attributed to genetic drift associated with low effective population and geographical isolation [4]. The estimated inbreeding coefficients were -0.041, -0.069, and -0.045 in Chikso, Heugu, and Hanwoo, respectively. The estimated average relatedness was highest for Heugu (0.155) followed by Hanwoo (0.12).

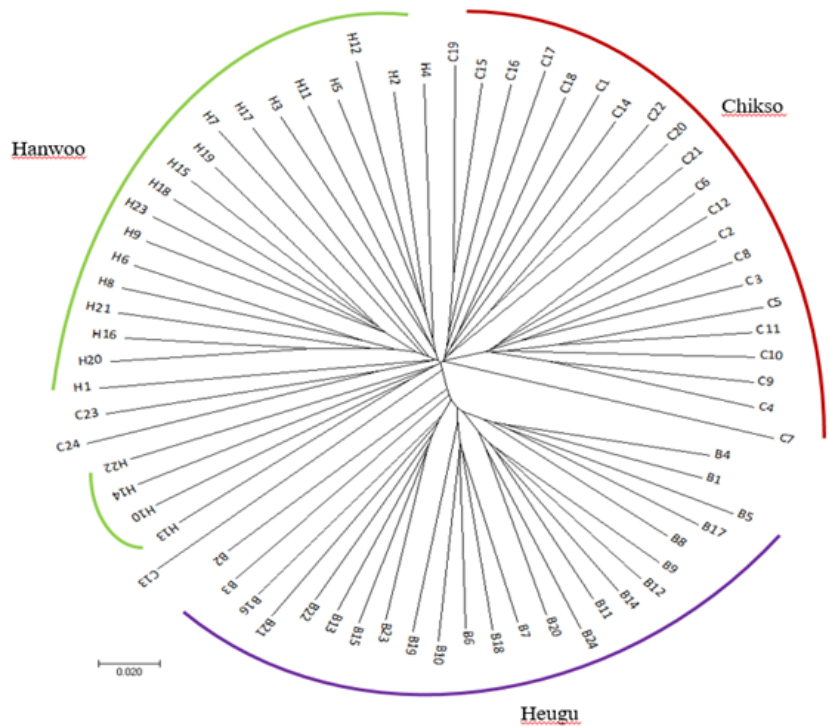
To portray population structure, a principal component was carried out and results showed that the three breeds were clustered based on their coat color phenotypes and breeding histories. As well depicted in Fig. 2, the PC1 accounted for about 48.39% of the variation and prominently separated Hanwoo and Chikso from the Korean Black cattle with a lower level of variation in Heugu. The PC2 segregated Brown Hanwoo population from the Brindle Hanwoo (Chikso) with some individuals from both breeds clustered closely (Fig. 3). In addition, Heugu breed was far separated from the two mainland cattle breeds, possibly due to geographical isolation and genetic drift associated with small effective population size. The PCA results further supported by a model-based population structure (Fig. 2).

### Linkage disequilibrium and demographic history

Linkage disequilibrium as estimated by  $r^2$  were found to be  $0.25 \pm 0.34$ ,  $0.26 \pm 0.35$  and  $0.26 \pm 0.35$  in Hanwoo, Chikso, and Heugu, respectively. These estimates were higher than the reported 0.1, 0.13, and 0.12 values in Hanwoo, Chikso, and Heugu based on 50 K chip analysis [18]. Across the three breeds,  $r^2$  values decreased steeply as the distance between markers increased. For instance, in the Hanwoo cattle,  $r^2$  values dropped from 0.35 to 0.11 when the inter-marker distance increased from 0–10 to 80–100 b (Fig. 4). The higher LD at a shorter distance in the three Korean cattle breeds could be attributed to a reduction in their effective population sizes across generations. The effective population size ( $N_e$ ) during the last 13 generations (~65 years) in Hanwoo, Chikso, and Heugu were 88, 94, and 57, respectively. Overall, the studied breeds showed a consistent decline in  $N_e$  across all generations. Of the three Korean native cattle breeds, Heugu had smaller  $N_e$  values at all generations considered (Fig. 5). These smaller  $N_e$  values obtained from Heugu are in concurrent with the estimated lower within-breed genetic diversity. The  $N_e$  values obtained in this study for the last 13 generations are far lower than those reported for Hanwoo (260) and Chikso (202) [17], but higher than the values estimated for Hanwoo (83) and Chikso (59) [18]. This difference can be attributed to the difference in genotyping arrays, Bovine HD and SNP50, respectively.



**Fig. 2.** Individual animals clustering based on principal component analysis (A) and model-based population structure analysis results (K = 3) (B).



**Fig. 3.** Genetic relationships among three Korean cattle breeds.

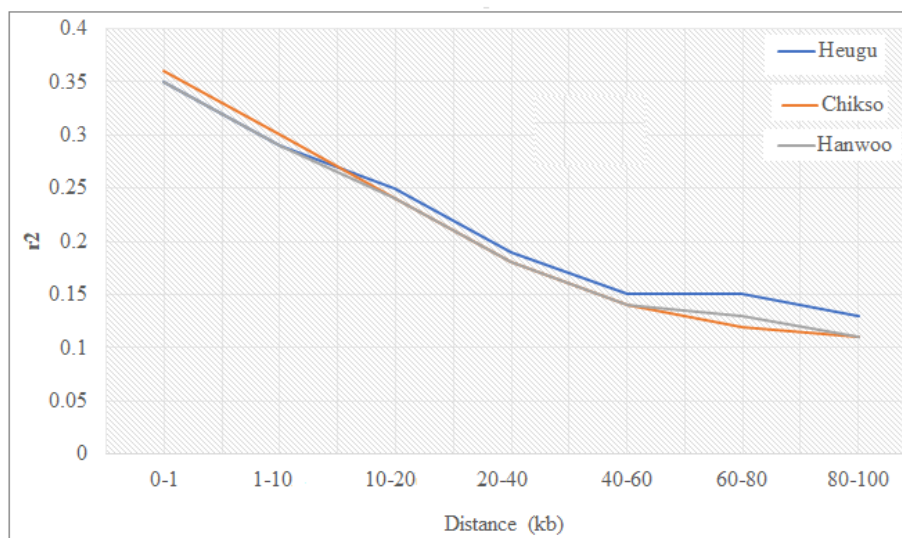


Fig. 4. Linkage disequilibrium ( $r^2$ ) decay in three Korean cattle breeds.

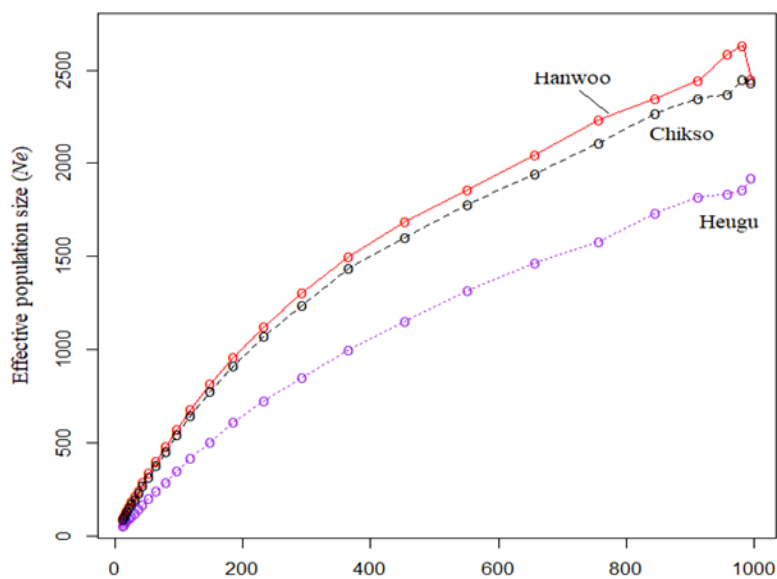


Fig. 5. Effective population size across generations in the three Korean cattle breeds.

### Candidate regions and genes under positive selection

Here for the first time, we employed the GGP-F250 chip primarily built from functional variants to investigate how selection and genetic drift have shaped the genetic variation of Korean native cattle breeds displaying distinct phenotypic traits. Tables 2 and 3, present candidate regions and genes identified in the comparisons of Hanwoo-Heugu and Hanwoo-Chikso, respectively. Across the bovine autosomal chromosomes, 113 and 84 genes were detected for Hanwoo-Chikso and Hanwoo-Heugu pairs analyses, respectively. For the two pairs of comparisons, the strongest signals of selection were detected on BTA18 (12.51–14.57 Mb;  $ZF_{st} = 11$ ). The largest numbers of candidate genes were also located on BTA18 followed on BTA8 and BTA11. Specifically, the region on BTA18 between 13.34 and 15.06 Mb includes 25 genes in Hanwoo-Chikso pair. For



Heugu-Hanwoo group, the candidate regions on BTA18 (13.93–14.68 Mb) contained 18 genes. The strong signals of selection on BTA18 also had strong linkage disequilibrium and diverse haplotypes in the three cattle breeds analysed (Figs. 6–8). In addition to variation in production traits, the studied breeds or breeds under study also exhibit distinct coat colors and patterns. The Heugu cattle display a solid black coat color, whereas Hanwoo shows brown coat color. Interestingly, the region on BTA18 (14.32–14.68 Mb; ZFst = 8) showing strong divergent selection signals was only 19 kb away from the *MC1R* gene (14,705,093–14,706,843 [Figs. 6–8]).

As compared with the two Korean native cattle breeds, the Brown Hanwoo cattle breed has been phenotypically subjected to selection for beef production and quality traits, including carcass weight, eye muscle area, backfat thickness, and marbling score for the past 30 years [6]. The list of our candidate genes includes genes affecting body size, growth, stature, and carcass quality traits (Table 2 and 3). More importantly, the region between 24.67 Mb and 25.65 Mb on BTA 14 includes *XKR4*, *PLAG1*, *LYN*, *DPEP1*, *SDR16C5*, and *TMEM68* genes that have been previously well known to affect several traits including height, carcass weight, and stature. This region also overlapped with several known QTL for stature, yearling weight, weaning weight, body weight gain, subcutaneous rump fat thickness, intramuscular fat, average daily gain, and carcass weight. The *XKR4* gene has been reported to be associated with the backfat thickness [19,20], feed intake, and average daily gain [21,22]. *PLAG1* and *LYN* gene were associated with variation in stature in cattle and humans [23,24], associated with feed intake and growth in beef cattle [25]. *TMEM68* is associated with several production traits including growth, birth weight, feed intake, meat tenderness, and growth/yearling weight in cattle [22,26]. *SDR16C5* is associated with birth weight, body

**Table 2.** Selection regions and genes identified from Heugu and Hanwoo cattle comparison

Chr	Start position	End position	Candidate genes	QTL
2	71023597	71882569	<i>MARCO</i> , <i>STEAP3</i> , <i>C2H2orf76</i> , <i>DBI</i> , <i>SCTR</i>	Body weight
3	8684364	8879299	<i>ITLN2</i> , <i>ENSBTAG0000046236</i> , <i>ENSBTAG00000040437</i> , <i>CD244</i> , <i>LY9</i> , <i>ENSBTAG00000010458</i>	Marbling score
5	100367546	101298140	<i>CLEC12B</i> , <i>KLRF2</i> , <i>RF00026</i> , <i>ENSBTAG00000038461</i> , <i>A2M</i>	Scrotal circumference, yearling weight
7	54109476	54190447	<i>PCDHGA2</i> , <i>PCDHGA3</i> , <i>PCDHGB1</i> , <i>PCDHGB2</i> , <i>PCDHGA5</i> , <i>PCDHGC3</i>	
8	60317329	60596717	<i>GBA2</i> , <i>MSMP</i> , <i>RGP1</i> , <i>NPR2</i> , <i>ENSBTAG00000047598</i> , <i>SPAG8</i> , <i>HNT2</i> , <i>FMA221B</i> , <i>TMEM8B</i> , <i>ENSBTAG00000026123</i>	Height, body weight
8	67030265	67241125	<i>ENSBTAG0000005966</i> , <i>ENSBTAG0000005966</i>	Body weight gain
8	72477349	72949048	<i>ADAM28</i> , <i>ADAMDEC1</i> , <i>ADAM7</i>	
11	34583714	34813659	-	
11	93787137	93853093	<i>OR1L1</i> , <i>OR1L3</i>	
15	47043175	47908687	<i>DCHS1</i> , <i>TPP1</i> , <i>TAF10</i> , <i>RRP8</i> , <i>DNHD1</i> , <i>APBB1</i> , <i>OR52E4</i> , <i>ENAG00000037505</i> , <i>ENSBTAG0000000118</i> , <i>ENSBTAG00000038452</i> , <i>ENSBTAG00000027949</i> , <i>ENSBTAG00000040480</i> , <i>ENSBTAG00000036326</i>	Body weight gain, yearling weight, average daily gain, feed conversion ratio, dry matter intake, residual feed intake
17	72962185	73021410	<i>IGLL1</i> , <i>ZNF280B</i> , <i>ZNF280A</i>	
18	6301968	6481097	-	
18	11406268	11581262	-	
18	13933911	14685758	<i>CYBA</i> , <i>RNF166</i> , <i>CTU2</i> , <i>PIEZO1</i> , <i>bta-mir-2327</i> , <i>CDT1</i> , <i>APRT</i> , <i>GALNS</i> , <i>TRAPPC2L</i> , <i>CBFA2T3</i> , <i>ACSF3</i> , <i>CDH15</i> , <i>SLC22A31</i> , <i>ANKRD11</i> , <i>SPG7</i> , <i>CPNE7</i> , <i>ZNF276</i> , <i>FANCA</i>	Residual feed intake, calf size
21	49597943	49738155	<i>TRAPPC6B</i> , <i>ENSBTAG00000045986</i> , <i>ENSBTAG0000006819</i>	Bone quality
24	41976143	42597651	<i>RALBP1</i> , <i>RAB31</i> , <i>TXNDC2</i> , <i>VAPA</i> , <i>APCDD1</i>	Average daily gain, age at puberty

chr, chromosome; QTL, quantitative trait locus.

weight, and differences in body stature in beef and dairy cattle breeds [24,27]. Additionally, this gene influences human height [23,28,29]. In agreement with our results, a genome-wide association study of Korean cattle (Hanwoo) did detect QTL for carcass weight on BTA14 at 23–25 Mb [8,9].

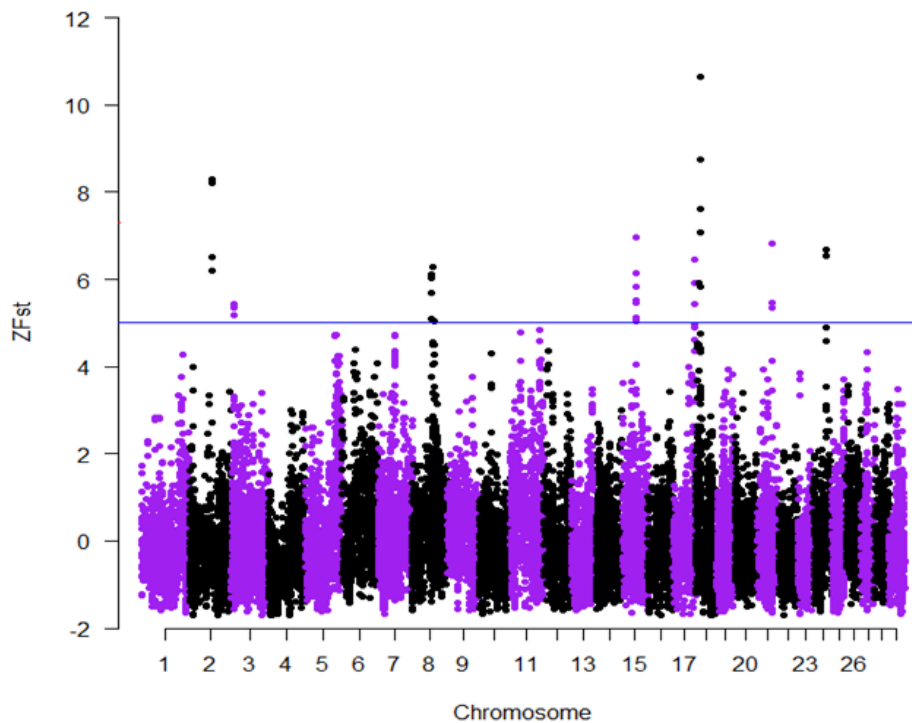
We further assessed selective signals between the two pairwise comparisons. Common signals of selection between Hanwoo–Heugu and Hanwoo–Chikso pairs were identified on 3 autosomal chromosomes including on BTA11 (93.79–93.80 Mb), BTA17(73.00–73.02 Mb), and BTA18 (14.06–14.68 Mb). Of these candidate regions, the strongest shared selection signals were observed on BTA18 (13.34–15.07 Mb) that covered 1,727 kb. This region includes 18 genes (*ACSF3*, *ANKRD11*, *APRT*, *CBFA2T3*, *CDH15*, *CDT1*, *CPNE7*, *FANCA*, *GALNS*, *IGLL1*, *OR1L1*, *OR1L3*,

**Table 3.** Candidate regions and genes associated with beef production and carcass quality traits identified from Chikso and Hanwoo cattle comparison

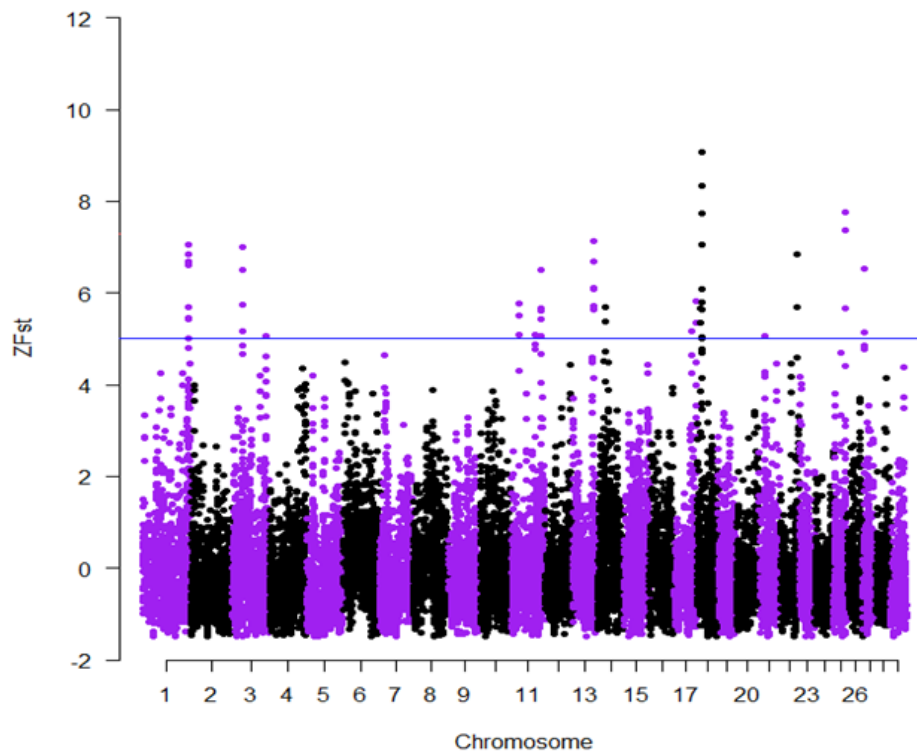
Chr	Start position	End position	Genes	QTL
1	148072449	151166757	<i>PRMT2</i> , <i>FBXO25</i> , <i>ENSBTAG00000046447</i> , <i>SIM2</i> , <i>HLCS</i> , <i>RIPPLY3</i> , <i>RF00026</i> , <i>TTC3</i> , <i>VPS26C</i>	Body weight gain, weaning weight, muscularity, marbling score, fat thickness, lean meat yield
3	32873828	33033967	<i>KCNA2</i> , <i>KCNA10</i>	
3	110766510	111381801	<i>TFAP2E</i> , <i>KIAA0319L</i> , <i>ZMYM4</i> , <i>ZMYM1</i> , <i>ZMYM6</i> , <i>DLGAP3</i>	Lean meat yield, marbling score, longissimus muscle area, yearling weight, body weight gain, average daily gain
7	14999658	15045085	<i>ENSBTAG00000046982</i> , <i>ENSBTAG00000047921</i> , <i>ENSBTAG0000004369</i>	
11	21010489	21606892	<i>GALM</i> , <i>SRSF7</i> , <i>GEMIN6</i> , <i>DHX57</i> , <i>MORN2</i> , <i>ARHGEF33</i> , <i>CDKL4</i> , <i>MAP4K3</i>	Body weight
11	77076811	78031240	<i>APOB</i>	Yearling weight, body weight gain, intramuscular fat
11	93692524	93809101	<i>ENSBTAG00000045545</i> , <i>ENSBTAG00000038551</i> , <i>OR1Q1</i> , <i>OR1B1</i> , <i>OR1L1</i> , <i>OR1L3</i>	
13	66660916	66868249	<i>RBL1</i> , <i>SOGA1</i> , <i>MROH8</i> , <i>RPN2</i> , <i>GHRH</i>	Body weight gain
13	71333012	71723514	<i>PTPRT</i>	Weaning weight
14	20596116	20987173	<i>ENSBTAG00000009474</i> , <i>ENSBTAG000000040351</i> , <i>SPIDR</i>	
14	24396553	25135691	<i>XKR4</i> , <i>TMEM68</i> , <i>LYN</i> , <i>PLAG1</i> , <i>RF00003</i> , <i>SDR16C5</i>	Weaning weight, yearling weight, scrotal circumference, stature, body weight gain, subcutaneous rump fat thickness, intramuscular fat, average daily gain, growth index, carcass weight
17	54274325	54408888	<i>TCTN2</i> , <i>GTF2H3</i> , <i>EIF2B1</i> , <i>DDX55</i> , <i>TMED2</i> , <i>RILPL1</i>	
17	73002611	73020126	<i>IGLL1</i> , <i>ZNF280B</i> , <i>ZNF280A</i>	
18	10853886	11102972	<i>KLHL36</i> , <i>USP10</i> , <i>CRISPLD2</i>	Residual feed intake, cold tolerance
18	13343265	15070445	<i>SLC7A5</i> , <i>CA5A</i> , <i>BANP</i> , <i>ZNF469</i> , <i>CDT1</i> , <i>APRT</i> , <i>GALNS</i> , <i>TRAPPC2L</i> , <i>CBFA2T3</i> , <i>ACSF3</i> , <i>CDH15</i> , <i>SLC22A31</i> , <i>ANKRD11</i> , <i>SPG7</i> , <i>CPNEP1</i> , <i>ZNF276</i> , <i>FANCA</i> , <i>SPIRE2</i> , <i>TCF25</i> , <i>DEF8</i> , <i>ENSBTAG00000038051</i> , <i>GAS8</i> , <i>SHCBP1</i> , <i>VPS35</i> , <i>ORC6</i>	Residual feed intake, feed conversion ratio, conception rate
21	20178170	20346289	<i>ENSBTAG00000001308</i> , <i>ENSBTAG00000002786</i> , <i>ENSBTAG00000012326</i>	
22	52187729	52768833	<i>ENSBTAG00000047174</i> , <i>MAP4</i> , <i>CATHL6</i> , <i>DHX30</i> , <i>SMARCC1</i> , <i>CSPG5</i> , <i>ELP6</i> , <i>RF00026</i> , <i>SCAP</i> , <i>CDC25A</i>	
25	21352460	21458166	<i>COG7</i> , <i>GGA2</i> , <i>EARS2</i>	
25	36085282	36169022	<i>ENSBTAG000000020157</i> , <i>ENSBTAG000000047767</i>	
27	4657588	5041722	<i>ENSBTAG00000007477</i> , <i>ENSBTAG00000008519</i> , <i>AGPAT5</i> , <i>XKR5</i> , <i>TAP</i> , <i>SPAG11B</i> , <i>ZNF705A</i> , <i>ENSBTAG00000007340</i>	

chr, chromosome; QTL, quantitative trait locus.





**Fig. 6.** Manhattan plots of genome-wide distribution of ZFst values for the comparison of Hanwoo and Heugu. The solid blue line indicates ZFst values  $\geq 5$ .



**Fig. 7.** Manhattan plots of genome wide distribution of ZFst values for the comparison of Hanwoo and Chikso. The solid blue line indicates ZFst values  $\geq 5$ .

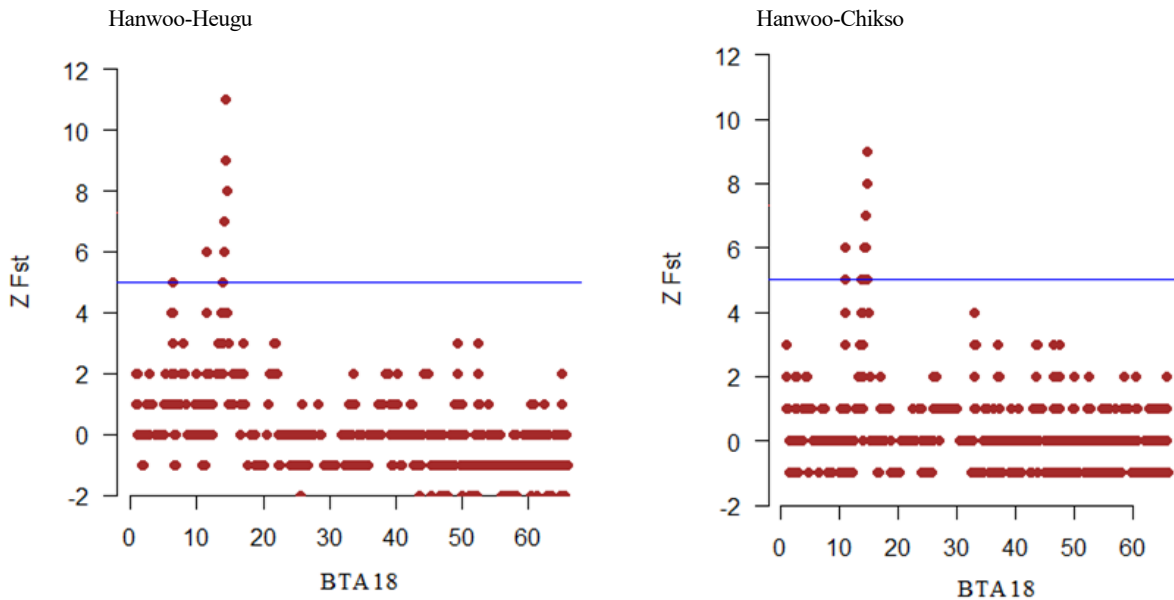


Fig. 8. Signatures of strong selection spotted on BTA18 at 14.00–15.03 Mb.

*RF00026*, *SLC22A31*, *SPG7*, *TRAPPC2L*, *ZNF276*, *ZNF280A* [Table 3; Figs. 6 and 7]). The *ACSF3* gene has been identified as a novel candidate for intramuscular fat (IMF) [30] and gene activates fatty acids [31]. Two of the candidate genes (*CDH15* and *GALNS*) have reported to be associated with meat production and stature in cattle [32]. Our LD and haplotype analysis did detect strong LD and haplotype block in the *GALNS*, *CDH15*, and *APRT* gene regions. In their expression analysis, [33] demonstrated that the expression of *DPEP1* gene was increased in cattle with greater average daily gain. *CPNE7*, *FANCA*, and *SPG7* all located on BTA18 between 13.93 and 14.68 Mb were identified as being under selection in European taurine breeds and linked to reproduction, lipid metabolism process, and nervous system development [34]. These shared signals of selection in genes associated with beef traits could imply that Hanwoo cattle are selected for growth and carcass quality traits.

Several earlier and recent studies have clearly shown that growth hormone (GH) plays an important role in controlling growth rate, feed intake, lactation, and carcass traits [35–37]. GH levels are regulated by the release of *GHRH* [38]. Coincidentally, a region on BTA13 (66.66–66.86 Mb) spanning 5 genes, including *RBL1*, *SOGA1*, *MROH8*, *RPN2*, and *GHRH*. Mutations in this *GHRH* gene are linked to carcass yield in cattle [39]. Previous studies have shown that *SOGA1* gene affects average daily gain [40,41] and residual feed intake [40]. A region spanning 4.65–5.04 Mb on BTA27 harbored candidate gene for abiogenesis and fatty acid oxidation [42]. Another potential region of interest is flagged on BTA22 (52.18–52.76 Mb) containing the *CDC25A* which underlines body size variation and under strong selection in beef cattle [43]. Another candidate region is BTA5:100.36–101.29 Mb, which spanned the *CLEC12B* gene. The *CLEC* family genes such as *CLEC12A* and *CLEC4G* are highly expressed in tender meat and associated with meat tenderness [44,45]. Another gene also within the BTA17 (54.27–54.40 Mb), *EIF2B1*, was identified as a potential candidate for beef tenderness [46]. *BANP* is associated with preadipocyte proliferation [47]. Following the association of several of our candidate genes with meat quality traits, further functional analysis of the divergently selected genes (*DBI*, *ACSF3*, *HINT2*, *GBA2*, *AGPAT5*, *SCAP*, *ELP6*, *APOB*, and *RBL1*) was associated with relevant gene ontology (GO) terms including fatty

oxidation, metabolism, biosynthesis, and storage.

The expression of *DPEP1* gene was increased in cattle with greater average daily gain [33], expression of *GALM* is lower in cattle showing lower IMF [33,48]. Several of the candidate genes found in this study were previously reported QTL regions on beef production traits (Tables 2 and 3).

In summary, based on the results of the present study, the genetic diversity and population structure of Korean cattle breeds can be revealed by population demographic events and selective breeding. The smallest effective population size obtained in particular for Heugu over generations pledges further strengthening of the ongoing conservation program. The candidate genes detected in the present study are previously known to affect beef production and quality traits and could be used in the beef cattle breeding strategies.

## REFERENCES

1. Lee SH, Park BH, Sharma A, Dang CG, Lee SS, Choi TJ, et al. Hanwoo cattle: origin, domestication, breeding strategies and genomic selection. *J Anim Sci Technol*. 2014;56:2.
2. Dadi H, Lee SH, Lee SS, Park C, Kim KS. Inter- and intra-population genetic divergence of East Asian cattle populations: focusing on Korean cattle. *Genes Genom*. 2014;36:261-5.
3. Decker JE, McKay SD, Rolf MM, Kim J, Alcalá AM, Sonstegard TS, et al. Worldwide patterns of ancestry, divergence, and admixture in domesticated cattle. *PLoS Genet*. 2014;10:e1004254.
4. Dadi H, Lee SH, Jung KS, Choi JW, Ko MS, Han YJ, et al. Effect of population reduction on mtDNA and demographic history of Korean cattle populations. *Asian-Australas J Anim Sci*. 2012;25:1223-8.
5. Suh S, Kim YS, Cho CY, Byun MJ, Choi SB, Ko YG, et al. Assessment of genetic diversity, relationships and structure among Korean native cattle breeds using microsatellite markers. *Asian-Australas J Anim Sci*. 2014;27:1548-53.
6. Park B, Choi T, Kim S, Oh SH. National genetic evaluation (system) of Hanwoo (Korean native cattle). *Asian-Australas J Anim Sci*. 2013;26:151-6.
7. Edea Z, Jeoung YH, Shin SS, Ku J, Seo S, Kim IH, et al. Genome-wide association study of carcass weight in commercial Hanwoo cattle. *Asian-Australas J Anim Sci*. 2018;31:327-34.
8. Lee SH, Choi BH, Lim D, Gondro C, Cho YM, Dang CG, et al. Genome-wide association study identifies major loci for carcass weight on BTA14 in Hanwoo (Korean cattle). *PLOS ONE*. 2013;8:e74677.
9. Lee SH, van der Werf J, Lee SH, Lim DJ, Park EW, Gondro C, et al. Genome wide QTL mapping to identify candidate genes for carcass traits in Hanwoo (Korean Cattle). *Genes Genom*. 2012;34:43-9.
10. Rowan TN, Hoff JL, Crum TE, Taylor JF, Schnabel RD, Decker JE. A multi-breed reference panel and additional rare variants maximize imputation accuracy in cattle. *Genet Sel Evol*. 2019;51:66.
11. Purcell S, Neale B, Todd-Brown K, Thomas L, Ferreira MA, Bender D, et al. PLINK: a tool set for whole-genome association and population based linkage analyses. *Am J Hum Genet*. 2007;81:559-75.
12. Barbato M, Orozco-terWengel P, Tapio M, Bruford MW. SNeP: a tool to estimate trends in recent effective population size trajectories using genome-wide SNP data. *Front Genet*. 2015;6:109.
13. Weir BS, Cockerham CC. Estimating F-statistics for the analysis of population structure. *Evolution*. 1984;38:1358-70.
14. Halushka MK, Fan JB, Bentley K, Hsie L, Shen N, Weder A, et al. Patterns of single nucleotide

- polymorphisms in candidate genes for blood pressure homeostasis. *Nat Genet.* 1999;22:239-47.
15. Cargill M, Altshuler D, Ireland J, Sklar P, Ardlie K, Patil N, et al. Characterization of single-nucleotide polymorphisms in coding regions of human genes. *Nat Genet.* 1999;22:231-8.
  16. Czech B, Frąszczak M, Mielczarek M, Szyda J. Identification and annotation of breed-specific single nucleotide polymorphisms in *Bos taurus* genomes. *PLOS ONE.* 2018;13:e0198419.
  17. Kim S, Cheong HS, Shin HD, Lee SS, Roh HJ, Jeon DY, et al. Genetic diversity and divergence among Korean cattle breeds assessed using a BovineHD single-nucleotide polymorphism chip. *Asian-Austral J Anim Sci.* 2018;31:1691-9.
  18. Sharma A, Lee SH, Lim D, Chai HH, Choi BH, Cho Y. A genome-wide assessment of genetic diversity and population structure of Korean native cattle breeds. *BMC Genet.* 2016;17:139.
  19. Porto Neto LR, Bunch RJ, Harrison BE, Barendse W. Variation in the *XKR4* gene was significantly associated with subcutaneous rump fat thickness in indicine and composite cattle. *Anim Genet.* 2012;43:785-9.
  20. Bolormaa S, Porto Neto LR, Zhang YD, Bunch RJ, Harrison BE, Goddard ME, et al. A genome-wide association study of meat and carcass traits in Australian cattle. *J Anim Sci.* 2011;89:2297-309.
  21. Medeiros de Oliveira Silva R, Bonvino Stafuzza N, de Oliveira Fragomeni B, Miguel Ferreira de Camargo G, Matos Ceacero T, Noely dos Santos Gonçalves Cyrillo J, et al. Genome-wide association study for carcass traits in an experimental nelore cattle population. *PLOS ONE.* 2017;12:e0169860.
  22. Lindholm-Perry AK, Kuehn LA, Smith TPL, Ferrell CL, Jenkins TG, Freetly HC, et al. A region on BTA14 that includes the positional candidate genes *LYPLA1*, *XKR4* and *TMEM68* is associated with feed intake and growth phenotypes in cattle. *Anim Genet.* 2012;43:216-9.
  23. Gudbjartsson DF, Walters GB, Thorleifsson G, Stefansson H, Halldorsson BV, Zusmanovich P, et al. Many sequence variants affecting diversity of adult human height. *Nat Genet.* 2008;40:609-15.
  24. Utsunomiya YT, do Carmo AS, Carvalheiro R, Neves HRH, Matos MC, Zavarez LB, et al. Genome-wide association study for birth weight in Nelore cattle points to previously described orthologous genes affecting human and bovine height. *BMC Genet.* 2013;14:52.
  25. Hay EH, Roberts A. Genome-wide association study for carcass traits in a composite beef cattle breed. *Livest Sci.* 2018;213:35-43.
  26. Terakado PN, Costa RB, de Camargo GMF, Irano N, Bresolin T, Takada L, et al. Genome-wide association study for growth traits in Nelore cattle. *Animal.* 2018;12:1358-62.
  27. Xiong X, Yang H, Yang B, Chen C, Huang L. Identification of quantitative trait transcripts for growth traits in the large scales of liver and muscle samples. *Physiol Genomics.* 2015;47:274-80.
  28. Lettre G, Jackson AU, Gieger C, Schumacher FR, Berndt SI, Sanna S, et al. Identification of ten loci associated with height highlights new biological pathways in human growth. *Nat Genet.* 2008;40:584-91.
  29. Weedon MN, Lango H, Lindgren CM, Wallace C, Evans DM, Mangino M, et al. Genome wide association analysis identifies 20 loci that influence adult height. *Nat Genet.* 2008;40:575-83.
  30. Rubio YLB, Duarte JLG, Bates RO, Ernst CW, Nonneman D, Rohrer GA, et al. Implementing meta-analysis from genome-wide association studies for pork quality traits. *J Anim Sci.* 2015;93:5607-17.
  31. Bovo S, Bertolini F, Schiavo G, Mazzoni G, Dall'Olio S, Fontanesi L. Reduced representa-

- tion libraries from DNA pools analysed with next generation semiconductor based-sequencing to identify SNPs in extreme and divergent pigs for back fat thickness. *Int J Genomics*. 2015;2015:950737.
32. Gutiérrez-Gil B, Arranz JJ, Wiener P. An interpretive review of selective sweep studies in *Bos taurus* cattle populations: identification of unique and shared selection signals across breeds. *Front Genet*. 2015;6:167.
  33. Foote AP, Keel BN, Zarek CM, Lindholm-Perry AK. Beef steers with average dry matter intake and divergent average daily gain have altered gene expression in the jejunum. *J Anim Sci*. 2017;95:4430-9.
  34. Zhao F, McParland S, Kearney F, Du L, Berry DP. Detection of selection signatures in dairy and beef cattle using high-density genomic information. *Genet Sel Evol*. 2015;47:49.
  35. Burton JL, McBride BW, Block E, Glimm DR, Kennelly JJ. A review of bovine growth hormone. *Can J Anim Sci*. 1994;74:167-201.
  36. Kopchick JJ, Cioffi JA. Exogenous and endogenous effects of growth hormone in animals. *Livest Prod Sci*. 1991;27:61-75.
  37. Brumby PJ. The influence of growth hormone on growth in young cattle. *N Z J Agric Res*. 1959;2:683-9.
  38. Vance ML. Growth-hormone-releasing hormone. *Clin Chem*. 1990;36:415-20.
  39. Cheong HS, Yoon DH, Kim LH, Park BL, Choi YH, Chung ER, et al. Growth hormone-releasing hormone (GHRH) polymorphisms associated with carcass traits of meat in Korean cattle. *BMC Genet*. 2006;7:35.
  40. Do DN, Strathe AB, Ostersen T, Pant SD, Kadarmideen HN. Genome-wide association and pathway analysis of feed efficiency in pigs reveal candidate genes and pathways for residual feed intake. *Front Genet*. 2014;5:307.
  41. Meng Q, Wang K, Liu X, Zhou H, Xu L, Wang Z, et al. Identification of growth trait related genes in a Yorkshire purebred pig population by genome-wide association studies. *Asian-Australas J Anim Sci*. 2017;30:462-9.
  42. Zhang YY, Wang HB, Wang YN, Wang HC, Zang S, Hong JY, et al. Transcriptome analysis of mRNA and microRNAs in intramuscular fat tissues of castrated and intact male Chinese Qinchuan cattle. *PLOS ONE*. 2017;12:e0185961.
  43. Wang X, Liu J, Zhou G, Guo J, Yan H, Niu Y, et al. Whole-genome sequencing of eight goat populations for the detection of selection signatures underlying production and adaptive traits. *Sci Rep*. 2016;6:38932.
  44. Fonseca LFS, Gimenez DFJ, Silva DB, Barthelson R, Baldi F, Ferro JA, et al. Differences in global gene expression in muscle tissue of Nelore cattle with divergent meat tenderness. *BMC Genomics*. 2017;18:945.
  45. Tizioto PC, Decker JE, Taylor JF, Schnabel RD, Mudadu MA, Silva FL, et al. Genome scan for meat quality traits in Nelore beef cattle. *Physiol Genomics*. 2013;45:1012-20.
  46. Gonçalves TM, de Almeida Regitano LC, Koltjes JE, Cesar ASM, da Silva Andrade SC, Mourão GB, et al. Expression analysis indicates potential pathways and regulators of beef tenderness in Nelore cattle. *Front Genet*. 2018;9:441.
  47. Liu M, Huang HY. Identification and validation of novel C/EBPbeta-regulated genes in preadipocyte proliferation. *Chin Med J*. 2010;123:1190-4.
  48. Zhang HM, Xia HL, Jiang HR, Mao YJ, Qu KX, Huang BZ, et al. Longissimus dorsi muscle transcriptomic analysis of Yunling and Chinese simmental cattle differing in intramuscular fat content and fatty acid composition. *Genome*. 2018;61:549-58.