

Identification of Free-Living Amoebas in Tap Water of Buildings with Storage Tanks in Korea

Da-In Lee^{1,†}, Sung Hee Park^{1,†}, Jong Hwan Baek², Jee Won Yoon², Soo Im Jin², Kwang Eon Han², Hak Sun Yu^{1,3,*}

¹Department of Parasitology and Tropical Medicine, School of Medicine, Pusan National University, Yangsan-si, Gyeongnam 50612, Korea;

²Department of Premedicine, School of Medicine, Pusan National University, Yangsan-si, Gyeongnam 50612, Korea; ³Research Institute for Convergence of Biomedical Science and Technology, Pusan National University Yangsan Hospital, Yangsan-si, Gyeongnam 50612, Korea

Abstract: Free-living amoebas (FLAs) can cause severe disease in humans and animals when they become infected. However, there are no accurate survey reports on the prevalence of FLAs in Korea. In this study, we collected 163 tap water samples from buildings, apartments, and restrooms of highway service areas in 7 Korean provinces with high population density. All these buildings and facilities have water storage tanks in common. The survey was separated into categories of buildings, apartments, and highway service areas. Five hundred milliliters of tap water from each building was collected and filtered with 0.2 µm pore filter paper. The filters were incubated in agar plates with heated *E. coli* at 25°C. After axenization, genomic DNA was collected from each FLA, and species classification was performed using partial 18S-rDNA PCR-sequencing analysis. We found that 12.9% of tap water from buildings with storage tanks in Korea was contaminated with FLAs. The highway service areas had the highest contamination rate at 33.3%. All of the FLAs, except one, were genetically similar to *Vermamoeba vermiformis* (*Hartmannella vermiformis*). The remaining FLA (KFA21) was very similar to *Acanthamoeba lugdunensis* (KA/E26). Although cases of human infection by *V. vermiformis* are very rare, we must pay attention to the fact that one-third of tap water supplies in highway service areas have been contaminated.

Key words: *Vermamoeba vermiformis*, free-living amoeba, tap water of storage tank, 18S-rDNA sequencing

Free-living amoebas (FLAs) are ubiquitous protozoa akin to bacteria, fungi, and algae. FLAs are found all around us, including in dust, seawater, soil, the atmosphere, and lakes [1]. FLAs are classified as several species. Of these species, *Balamuthia*, *Naegleria*, *Sappinia*, *Vermamoeba* (formerly *Hartmannella*), and *Acanthamoeba* have been reported to infect humans and animals [2]. The symptoms of the infections varied by individual case and FLA species. [3]. In the case of *Naegleria* infection in humans, encephalitis, such as primary amebic meningoencephalitis, has been observed. *Acanthamoeba*, *Vermamoeba*, *Sappinia*, and *Balamuthia* infections have primarily been observed in the eyes, a condition known as amebic keratitis [4-8]. In recent studies, *Acanthamoeba* has also been observed as one of the potential allergens leading to airway inflammation through intranasal infection [9]. The tap water for many pub-

lic facilities as well as large residential and office buildings is stored in storage tanks and supplied through individual water pipes when needed for activities such as drinking, washing, and cooking [10]. These water storage tanks can be easily contaminated by external pollutants in the air. In addition, special circumstances, such as flooding and heavy rains, can cause wastewater to flow backward from basement water tanks to the rooftop water tanks, resulting in extreme contamination of the tap water [11]. For this reason, 79% of USA and 89% of UK household tap water samples have been reported to contain FLAs [11,12]. In this study, we investigated the FLA contamination rate in the tap water supplies of office buildings, apartments, and restrooms of highway service areas in South Korea. FLA contamination rates and genetic classification of species were investigated. A total of 163 tap water samples was collected using water sample bottles (MEDI-LAND, Seoul, Korea) from 37 apartments, 102 office buildings, and 24 highway service areas. Each 500 ml sample of tap water was filtered through 0.2 µm pore filter (Adventec MFS, California, USA). The exposed filters were placed upside down on 1.5% of agar plates, which were smeared with heated *Escherichia coli* and

•Received 10 March 2020, revised 17 April 2020, accepted 20 April 2020.

*Corresponding author (hsyu@pusan.ac.kr)

†These authors contributed equally to this work.

© 2020, Korean Society for Parasitology and Tropical Medicine

This is an Open Access article distributed under the terms of the Creative Commons Attribution Non-Commercial License (<https://creativecommons.org/licenses/by-nc/4.0>) which permits unrestricted non-commercial use, distribution, and reproduction in any medium, provided the original work is properly cited.

then incubated at 25°C. After one week, trophozoites or cysts of FLAs were detected under a microscope. A single cyst of each FLA was moved to a new *E. coli* treated agar plate under a microscope and then observed for additional growth of FLAs without any contamination. A piece of an agar plate with many FLA cysts was treated with 0.1N HCl for 24 hr for axenization. The agar plate was incubated according to previous reports [13]. Each FLA was named as KFA (Korean Free-living Amoeba) followed by a number (according to the detection order). To identify the genetic level of the FLAs, genomic DNA was extracted according to manufacturer protocols (Qiagen, Valencia, California, USA). Genetic analyses were performed with 18S-rDNA partial sequences of the FLAs. The primer sequences for 18S-rDNA were 5'-TTT GAA TTC GCT CCA ATA GCG TAT AIT AA-3' and 5'-TTT GAA TTC AGA AAG AGC TAT CAA TCT GT-3'. Phylogenetic analyses were performed with FLA isolates and 2 reference sequences (*A. lugdunensis* KA/E26 EF140627 and *V. vermiformis* CRIB-06 DQ123623) using the MEGA6 program.

Following the analyses, we found that 21 out of 163 (12.9%) tap water samples were contaminated with FLAs. The shapes of the cysts were very similar each other; the size of cysts were belong to 5-25 µm and they have 2 layers of membranes commonly (Fig. 1). FLAs were detected in 4 samples from apartments (10.8%), 9 samples from office buildings (8.8%), and 8 samples from highway service areas (33.3%) (Table 1). The observed FLA contamination rate was higher for

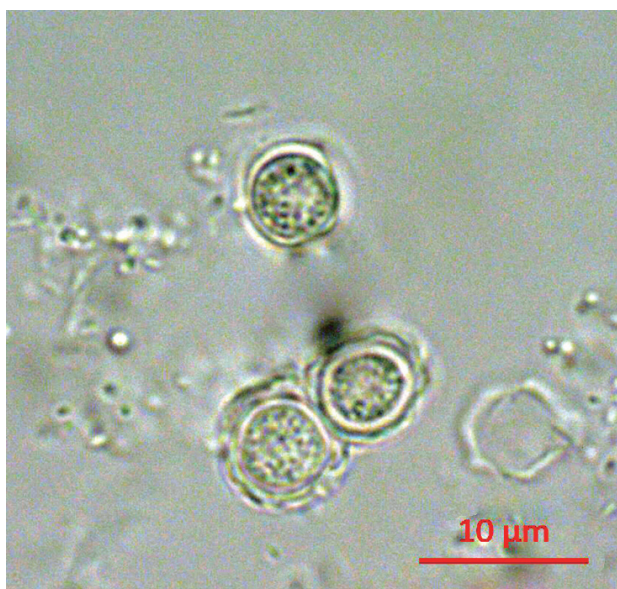


Fig. 1. Morphology of cyst of KFA 2.

highway service areas than apartments and office buildings. In order to determine the FLA contamination rate by region, we divided the FLA contaminated tap water samples into 8 regions (Table 2). FLA contamination was the highest in the Gyeongbuk region (north of Gyeongsang province), including Daegu (25.8%). In the Gyeongnam region (south of Gyeongsang province), which includes Busan and Ulsan, an FLA contamination rate of 16.1% was observed. In order to identify species, we isolated all FLAs from the contaminated tap water samples and ultimately collected 21 different FLAs. The genetic variation in the 21 different FLAs was analyzed using 18S-rDNA sequencing. We found that 20 of the FLAs were genetically similar to *V. vermiformis*. The remaining FLA was genetically similar to *A. lugdunensis* KA/E26 (Fig. 2).

FLAs are distributed in the components of many of our environments, such as dust, wastewater, sea water, soil, river, and the atmosphere, along with many other pollutants [14,15]. FLAs belonging to the *Acanthamoeba*, *Balamuthia*, and *Naegleria* species are important causes of numerous diseases in humans and animals. They infect a host through cyst formation before developing trophozoites and reproducing by mitosis [16]. They can enter the eyes, skin, lungs, and brain, resulting in severe pain. FLAs also live in contact lenses and eyewash solutions, and they have the potential to induce amoebic keratitis [17,18]. Recently, with increasing interest in personal beauty, the utilization of contact lenses has increased. At the same time, the number of amoebic keratitis patients in the U.K in-

Table 1. FLA contamination rate by building type

Building type	No. of samples	FLA detected samples (%)
Apartment	37	4 (10.8)
Office building	102	9 (8.8)
Highway service area	24	8 (33.3)
Total	163	21 (12.9)

Table 2. Regional FLA contamination rate

Region	No. of samples	FLA detected samples (%)
Incheon, Seoul, Gyeonggi	42	2 (4.8)
Daejeon, Chungchung	15	1 (6.7)
Jeonnam, Jeonbuk	10	0 (0.0)
Daegu, Gyeongbuk	31	8 (25.8)
Busan, Ulsan, Gyeongnam	62	10 (16.1)
Gangwon	1	0 (0.0)
Jeju	2	0 (0.0)
Total	163	21 (12.9)

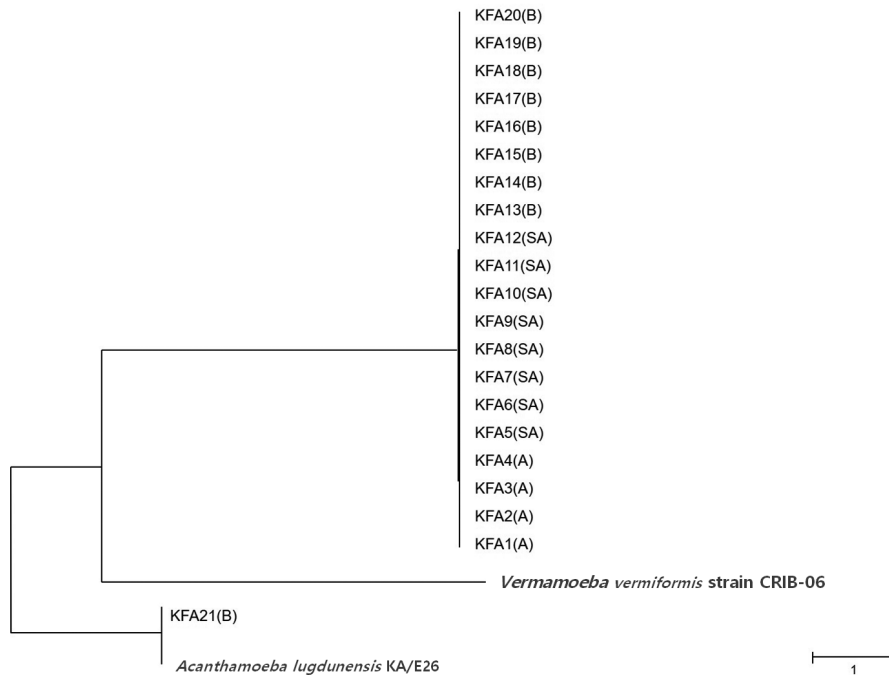


Fig. 2. Phylogenetic tree of 21 KFA isolates in Korea. Phylogenetic classifications were analyzed using 18S-rDNA with the MEGA6 program, the neighbor-joining method, and bootstrap analysis (1,000 replicates) based on the ClustalW algorithm. SA, service area; A, apartment; B, building. GenBank acc. No.: *A. lugdunensis* KA/E26, EF140627; *V. vermiformis* CRIB-06, DQ123623. No. of KFA1 – KFA21 were assigned to MT071758 – MT071778.

creased to 59 million as of 2016 [19]. In addition to amebic keratitis, *Acanthamoeba* has also been found to cause allergic airway inflammation in a recent study [9]. The isolated FLAs in this study were genetically related to *V. vermiformis* and *A. lugdunensis* KA/E26. *A. lugdunensis* KA/E26 has already been investigated, revealing genetic similarity to *A. lugdunensis* L3A and *A. lugdunensis* KA/E2. Numerous genetic isoforms of KA/E2 have been isolated from water, lens cases, and human eyes in Korea [13,20-23]. These genetic isoforms have been reported as a pathogen of amebic keratitis and potential allergen leading to airway inflammation [24]. Many studies in various countries have investigated FLA contamination rates [25]. For example, in the U.S., 79% of household tap water samples were contaminated with FLAs [11]. Likewise, in the U.K., 89% of household water samples contained FLAs [11,12]. In our study results, 33.3% of tap water samples from highway service areas were contaminated with FLAs. Although *Acanthamoeba* was not detected in any samples, *Vermamoeba* also has potential pathogenicity to humans [26]. Furthermore, because the life cycle of the 2 FLAs (*Vermamoeba* and *Acanthamoeba*) are very similar, *Acanthamoeba* could become more prevalent if we do not carefully maintain the storage water tanks.

In conclusion, we found that 12.9% of tap water in buildings with water storage tanks was contaminated with FLAs. Thus, it is necessary to determine the exact FLA contamination rate and establish regulatory policies for minimizing FLA contamination of tap water in South Korea.

ACKNOWLEDGMENTS

This work was supported by a 2-Year Research Grant of Pusan National University.

CONFLICT OF INTEREST

The authors declare that they have no conflict of interest.

REFERENCES

1. Greub G, Raoult D. Microorganisms resistant to free-living amoebae. *Clin Microbiol Rev* 2004; 17: 413-433.
2. Schuster FL, Visvesvara GS. Free-living amoebae as opportunistic and non-opportunistic pathogens of humans and animals. *Int J Parasitol* 2004; 34: 1001-1027.
3. Martinez AJ. Free-Living Amoebas: natural history, prevention,

- diagnosis, pathology and treatment of disease. Boca Raton, USA. CRC Press; 1985.
4. Aitken D, Hay J, Kinnear FB, Kirkness CM, Lee WR, Seal DV. Amebic keratitis in a wearer of disposable contact lenses due to a mixed *Vahlkampfia* and *Hartmannella* infection. *Ophthalmology* 1996; 103: 485-494.
 5. Grace E, Asbill S, Virga K. *Naegleria fowleri*: pathogenesis, diagnosis, and treatment options. *Antimicrob Agents Chemother* 2015; 59: 6677-6681.
 6. Niyyati M, Lorenzo-Morales J, Rezaeian M, Martin-Navarro CM, Haghi AM, Maciver SK, Valladares B. Isolation of *Balamuthia mandrillaris* from urban dust, free of known infectious involvement. *Parasitol Res* 2009; 106: 279-281.
 7. Qvarnstrom Y, da Silva AJ, Schuster FL, Gelman BB, Visvesvara GS. Molecular confirmation of *Sappinia pedata* as a causative agent of amoebic encephalitis. *J Infect Dis* 2009; 199: 1139-1142.
 8. Stehr-Green JK, Bailey TM, Visvesvara GS. The epidemiology of *Acanthamoeba* keratitis in the United States. *Am J Ophthalmol* 1989; 107: 331-336.
 9. Park MK, Cho MK, Kang SA, Park HK, Kim DH, Yu HS. *Acanthamoeba* protease activity promotes allergic airway inflammation via protease-activated receptor 2. *PLoS One* 2014; 9: e92726.
 10. National Research Council. Drinking Water and Health, Volume 4. Washington DC, USA. The National Academies Press. 1982.
 11. Kilvington S, Gray T, Dart J, Morlet N, Beeching JR, Frazer DG, Matheson M. *Acanthamoeba* keratitis: the role of domestic tap water contamination in the United Kingdom. *Invest Ophthalmol Vis Sci* 2004; 45: 165-169.
 12. Marciano-Cabral F, Jamerson M, Kaneshiro ES. Free-living amoebae, *Legionella* and *Mycobacterium* in tap water supplied by a municipal drinking water utility in the USA. *J Water Health* 2010; 8: 71-82.
 13. Lee SJ, Jeong HJ, Lee JE, Lee JS, Xuan YH, Kong HH, Chung DI, Ock MS, Yu HS. Molecular characterization of *Acanthamoeba* isolated from amebic keratitis related to orthokeratology lens overnight wear. *Korean J Parasitol* 2006; 44: 313-320.
 14. Visvesvara GS, Moura H, Schuster FL. Pathogenic and opportunistic free-living amoebae: *Acanthamoeba* spp., *Balamuthia mandrillaris*, *Naegleria fowleri*, and *Sappinia diploidea*. *FEMS Immunol Med Microbiol* 2007; 50: 1-26.
 15. Kang H, Sohn HJ, Seo GE, Seong GS, Ham AJ, Park AY, Jung SY, Lee SE, Cho SH, Shin HJ. Molecular detection of free-living amoebae from Namhangang (southern Han River) in Korea. *Sci Rep* 2020; 10: 335.
 16. Corliss JO, Esser SC. Comments on the role of the cyst in the life cycle and survival of free-living protozoa. *Trans Am Microsc Soc* 1974; 93: 578-593.
 17. Trabelsi H, Dendana F, Sellami A, Sellami H, Cheikhrouhou F, Neji S, Makni E, Ayadi A. Pathogenic free-living amoebae: epidemiology and clinical review. *Pathol Biol (Paris)* 2012; 60: 399-405.
 18. Castrillón JC, Orozco LP. *Acanthamoeba* spp. as opportunistic pathogens parasites. *Rev Chilena Infectol* 2013; 30: 147-155 (in Spanish).
 19. Carnt NP, Hoffman JM, Verma S, Hau S, Radford CFP, Minasian DC, Dart JKG. *Acanthamoeba* keratitis: confirmation of the UK outbreak and a prospective case-control study identifying contributing risk factors. *Br J Ophthalmol* 2018; 102: 1621-1628.
 20. Jeong HJ, Yu HS. The role of domestic tap water in *Acanthamoeba* contamination in contact lens storage cases in Korea. *Korean J Parasitol* 2005; 43: 47-50.
 21. Kong HH, Shin JY, Yu HS, Kim J, Hahn TW, Hahn YH, Chung DI. Mitochondrial DNA restriction fragment length polymorphism (RFLP) and 18S small-subunit ribosomal DNA PCR-RFLP analyses of *Acanthamoeba* isolated from contact lens storage cases of residents in southwestern Korea. *J Clin Microbiol* 2002; 40: 1199-1206.
 22. Yu HS, Choi KH, Kim HK, Kong HH, Chung DI. Genetic analyses of *Acanthamoeba* isolates from contact lens storage cases of students in Seoul, Korea. *Korean J Parasitol* 2001; 39: 161-170.
 23. Yu HS, Kong HH, Kim SY, Hahn YH, Hahn TW, Chung DI. Laboratory investigation of *Acanthamoeba lugdunensis* from patients with keratitis. *Invest Ophthalmol Vis Sci* 2004; 45: 1418-1426.
 24. Schaumberg DA, Snow KK, Dana MR. The epidemic of *Acanthamoeba* keratitis: where do we stand? *Cornea* 1998; 17: 3-10.
 25. Rodríguez-Zaragoza S. Ecology of free-living amoebae. *Crit Rev Microbiol* 1994; 20: 225-241.
 26. Scheid PL, Lâm TT, Sinsch U, Balczun C. *Vermamoeba vermiformis* as etiological agent of a painful ulcer close to the eye. *Parasitol Res* 2019; 118: 1999-2004.