

# Shape and Spacing Effects on Curvy Twin Sail for Autonomous Sailing Drone

Minh-Ngoc Pham\* · Bu-Gi Kim\*\* · Changjo Yang\*\*\*\*

\* Ph.D. Candidate, Graduate School of Mokpo National Maritime University, Mokpo, 58628, Korea,

\*\* Professor, Division of Marine Mechatronics, Mokpo National Maritime University, Mokpo, 58628, Korea,

\*\*\* Professor, Division of Marine Engineering System, Mokpo National Maritime University, Mokpo, 58628, Korea

## 무인 해상 드론용 트윈 세일의 형태와 간격에 관한 연구

팜민억\* · 김부기\*\* · 양창조\*\*\*\*

\* 목포해양대학교 대학원생, \*\* 목포해양대학교 해양메카트로닉스학부 교수,

\*\*\* 목포해양대학교 기관시스템공학부 교수

**Abstract :** *There is a growing interest this paper for ocean sensing where autonomous vehicles can play an essential role in assisting engineers, researchers, and scientists with environmental monitoring and collecting oceanographic data. This study was conducted to develop a rigid sail for the autonomous sailing drone. Our study aims to numerically analyze the aerodynamic characteristics of curvy twin sail and compare it with wing sail. Because racing regulations limit the sail shape, only the two-dimensional geometry (2D) was open for an optimization. Therefore, the first objective was to identify the aerodynamic performance of such curvy twin sails. The secondary objective was to estimate the effect of the sail's spacing and shapes. A viscous Navier-Stokes flow solver was used for the numerical aerodynamic analysis. The 2D aerodynamic investigation is a preliminary evaluation. The results indicated that the curvy twin sail designs have improved lift, drag, and driving force coefficient compared to the wing sails. The spacing between the port and starboard sails of curvy twin sail was an important parameter. The spacing is 0.035 L, 0.07 L, and 0.14 L shows the lift coefficient reduction because of dramatically stall effect, while flow separation is improved with spacing is 0.21 L, 0.28 L, and 0.35 L. Significantly, the spacing 0.28 L shows the maximum high pressure at the lower area and the small low pressure area at leading edges. Therefore, the highest lift was generated.*

**Key Words :** *Sailing Drone, Curvy Twin Sail, Driving Force Coefficient, Apparent Wind, Angle of Attack*

**요 약 :** 해양데이터를 수집하기 위해 필요한 엔지니어, 연구원 및 과학자를 대신할 수 있는 해양 모니터링 장치인 자율주행보트의 필요성이 대두되고 있다. 이 논문은 자율주행보트의 세일을 개발하기 위한 연구로 곡선형 트윈 세일의 공기역학적인 특성을 수치해석적으로 분석하고 이를 날개 형태의 세일과 성능비교를 통해 곡선형 트윈 세일의 공기 역학적인 성능을 확인하였고, 세일의 간격과 형상에 따른 성능을 비교하였다. 유체 해석을 위한 지배방정식은 Navier - Stokes를 사용하였다. 성능비교 결과 곡선 형 트윈 세일은 날개 형태의 세일과 비교하여 양력, 항력 및 추력 계수가 향상됨을 알 수 있다. 또한, 트윈 세일의 양 날개의 간격은 중요한 변수임을 확인 하였다. 0.035 L, 0.07 L, 0.14 L에서는 스톨로 인해 양력 계수의 감소로 나타났고 0.21 L, 0.28 L, 0.35 L에서는 개선되어 0.28 L에서 최대 양력을 보여 준다.

**핵심용어 :** 해상용 드론, 곡선형 트윈 세일, 추력 계수, 결보기 바람, 받음각

\* First Author : pmn5d16@gmail.com, 061-240-7472

† Corresponding Author : cjyang@mmu.ac.kr, 061-240-7228

## 1. Introduction

The marine environment in the sea is facing problems such as eutrophication, acidification, and oxygen deficiency. The need is growing for ocean sensing to benefit marine safety, environmental monitoring and climate research. An unmanned autonomous vehicle that can assist surveying the sea by acquiring long-term placed bound measurements, reporting pollution, hydrographic and meteorological data could be a helpful and cheap alternative to a commercial research vessel.

The researchers are now developing an autonomous sailing drone, which will be used as an experimental platform for autonomous data acquisition in the sea. The application drives requirements on the vehicle, where it needs to have robustness, reliability, and energy efficiency. The requirement is to develop a vehicle that can survive in any weather conditions all year under free conditions.

Utilization of wing sails in autonomous sailing drones has been an object for research in maritime robotics for over 15 years. Researches on wing sails have been conducted by many researchers. Several attempts to develop such systems have been made, for instance, by (Elkaim, 2001) and (Neal & Sauze, 2008). Elkaim has completed experimental aerodynamic performance of self-trimming wing sail for autonomous surface vehicles (Elkaim, 2007). In 2008, Aberystwyth University designed a sailing robot using double wing sail as an aero-propulsion system (Alves et al., 2008). A vehicle called “Sail drone” has been launched (Jekins et al., 2015). BMW Oracle was updated by a 60-meter high, multi-element wing sail, which won the 33rd America’s Cup in 2010. The rigid wing sail’s flexible size and excellent performance have been paid attention by the shipping industry (Seifert et al., 1993). Recently, Sweden Research Group have developed an autonomous sailboat with free-rotating wing sail (Kuttebkeuler et al., 2017). The research in the field shows that wing sails have good aerodynamic performance, good control capabilities, precision, and low power consumption. In order to improve the aerodynamic performance characteristic, different methods, such as trailing flap (Borglund & Kutteneuler, 2002) and (Daniel, 1996), leading slat (Carr & McAlister, 1983), deformed flaps (Li et al., 2015), and leading-edge turbulences (Fish, 1995), etc. However, difficulties in designing wing sails for autonomous sailing drone has been identified. Because of working in the long-term autonomous oceanography, the rigid sail’s simple design and good aerodynamic performance are required. Therefore,

the workability improvement of the sail in aerodynamic performance must be considered. A two dimensional curvy twin sail which installed on a Sailing drone is proposed and preliminary investigated.

## 2. Methodology

### 2.1 The Geometry of the Curvy twin sail

The general specifications of Sailing Drone are presented in Fig. 1 and Table 1.

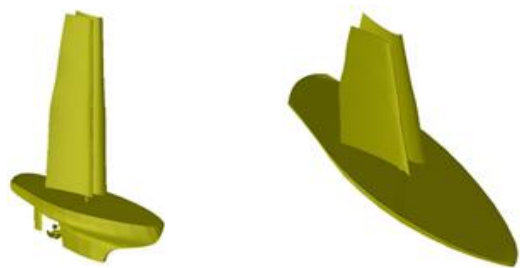


Fig. 1. 3D Design Model of Sailing Drone.

Table 1. General specifications

General Specifications	
Length overall	4.2 m
Width	1.2 m
Depth	1.0 m
Height above waterline	4.0 m
Displacement	280 kg
Curvy twin sail	
Span	3.5 m
Area	3.0 m <sup>2</sup>
Material	CFRP

The curvy twin sail’s geometry is a simplified 2D configuration of two-element rigid sail as Fig. 2 and Table 2. The non-dimensional number for characterizing the flow of fluid, Reynolds number is defined by Equation (1):

$$Re = \frac{\rho v L}{\mu} \quad (1)$$

Where  $\mu$  is the viscosity coefficient of air, no experimental data of optimized sail was available to validate the numerical results. Therefore, a proper numerical setting was performed to produce reliable results. The aerodynamic of NACA 0018 based on

## Shape and Spacing Effects on Curvy Twin Sail for Autonomous Sailing Drone

experiments were simulated with  $Re = 6 \times 10^5$  (the wind speed is assumed 8 m/s). Moreover, NACA 0018 was used to develop a wing sail by The Royal Institute Technology. The NACA 0018 wing sail simulation is compared with the curvy twin sail.

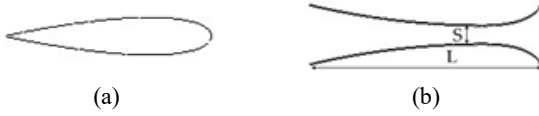


Fig. 2. (a) NACA 0018; (b) Curvy Twin Sail.

Table 2. Curvy Twin Sail parameterization

Parameter	Value
L	0.95 m
S	0.02 m
Re	$6 \times 10^5$

The total aerodynamic force can be decomposed in two ways. The first method considers the driving (FR) and heeling (FH) components of the total force. This is used when studying the balance of the aero-hydrodynamic forces. Nevertheless, when the aerodynamic behavior is analyzed on its own, it is common practice to decompose the aerodynamic force in its lift(L) and drag(D) components, as plotted in Fig. 3.

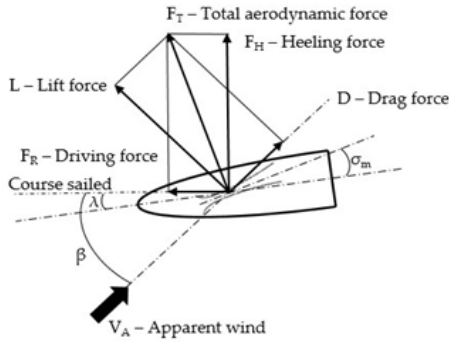


Fig. 3. Components of total aerodynamic force.

$$F_R = L \sin \beta - D \cos \beta$$

$$F_H = L \cos \beta + D \sin \beta$$

It is obvious that the goal is to maximize the driving force and simultaneously minimize the heeling force. When beating against the wind, the drag's contribution is negative because it increases the heeling force and reduces the driving forces. Therefore, in this point of sail, the objective is to maximize the lift and minimize the drag. As the apparent wind angle increases through the reaching

point of sail, the drag's contribution to the driving force becomes more important. At the last stage, when downwind, the maximum driving force will equivalent to maximum drag.

This work's primary purpose is to study the sail's shape and spacing, which are considered optimized parameters. By two dimensional simulation, the aerodynamic performance of 5 different sail shape was carried out to find the most appropriate curvy shape and spacing. The aerodynamic of NACA 0018 based on experiments were simulated. Moreover, NACA 0018 was used to develop a wing sail by The Royal Institute Technology (Kuttebkeuler et al., 2017). The NACA 0018 simulation is compared with the two dimensional curvy twin sail.

## 2.2 Computational Approach

### 2.2.1 Computational Domain

The calculation domain for computational simulation is presented in Fig. 4. The sail is located at the origin, while a semi-circle of radius  $15L$  forms the inlet. The cross-stream domain width is  $30L$ , while the down-stream length is  $40L$ . These domain dimensions ensure domain-independent results (Gasser et al., 2014), (Graf et al., 2009), and (Braun, 2008). AOA is adjusted by rotating the direction of airflow. The boundary conditions are described in Table 3.

The boundary conditions on domain sides are symmetry, while the downstream boundary is outlet. The velocity at the inlet is uniform, and the value is the same as the free flow velocity.

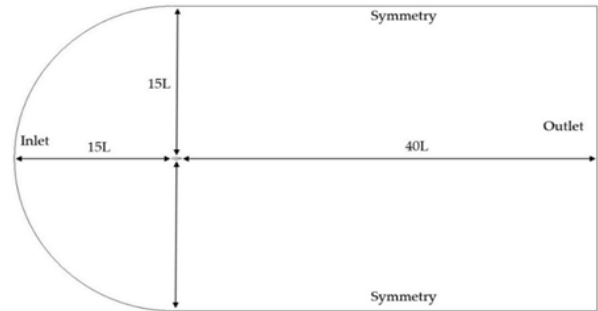


Fig. 4. The computational domain.

Table 3. Boundary condition

Calculation domain setup	
Inlet	Velocity inlet ( $v = 8$ m/s)
Outlet	Pressure outlet
Top and bottom	Symmetry
Wall	No slip

2.2.2 Mesh details and mesh independence

The quality of mesh determines the numerical result’s accuracy. Different numerical mesh parameters were examined, and a mesh independency test was done by observing the value of the computed lift coefficient at an angle of attack of 5 degrees. Fig. 5 shows the adopted mesh shapes where structured mesh was used (Hutchins, 2008) and (Milgram, 1968). The mesh distribution following the hexahedral was also refined to obtain accurate results.

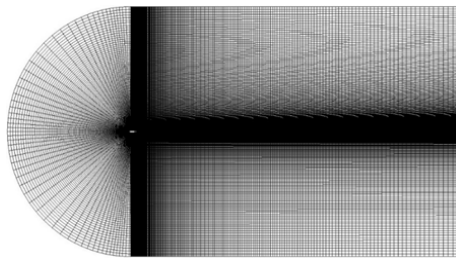


Fig. 5. The numerical solution mesh shape.

Table 4. Results of the mesh independency test

Mesh Parameter	Mesh 1	Mesh 2	Mesh 3	Mesh 4
No of nodes	98,868	99,023	102,912	150,671
Lift coefficient	0.4588	0.4801	0.4812	0.4825

Table 4 shows the obtained lift coefficient of the NACA 0018 at an angle of attack of 5 for different mesh sizes included in the mesh independency test. The computed lift coefficient varies from 0.45888 for mesh 1 to 0.4825 for mesh 4. The difference between the lift coefficient obtained by the coarse mesh and fine mesh (mesh 1 and mesh 4) is 5 %. However, the difference between mesh 4 results and mesh 3 results is only 0.18 %. Therefore, mesh 3 is adopted throughout the present work.

2.2.3 Computational Approach

To investigate the flow phenomena, an appropriate CFD flow solver must be selected. A CFD commercial code software is used to simulate in a parallel computation environment, along with a module for partitioning the volumetric grid as a pre-processor in parallel flow computations. CFD software solver can provide direct flow solutions and ad joint solutions for potential, Euler, Navier-Stokes, and Reynolds Averaged Navier-Stokes (RANS) governing equations. It uses a Finite Volume Method (FVM) for spatial discretization. Both explicit and implicit methods are

available for time integration, and central difference or upwind methods can also be used for spatial discretization. The advanced numerical techniques of residual smoothing and structured mesh methods are also available to improve the robustness and convergence of the flow solution. For the numerical analysis, the solver for the two-dimensional *k*-epsilon realizable governing equations which describe the mass conservation, momentum, and energy in a viscous fluid was used (Gentry, 1988) and (Fallow, 1996). The flow around the sail has a very low speed. It is important to consider the viscous effect for a more accurate flow solution. The setup for the computational model is illustrated in Table 5 (Claughton & Campell, 1994), (Hedges, 1993), (Hedges et al., 1996).

Table 5. Computational model setup

Simulation type	Single phase flow
Turbulence model	Realizable <i>k</i> -epsilon
Acting fluid	Air at 25°C
Calculation type	Steady state

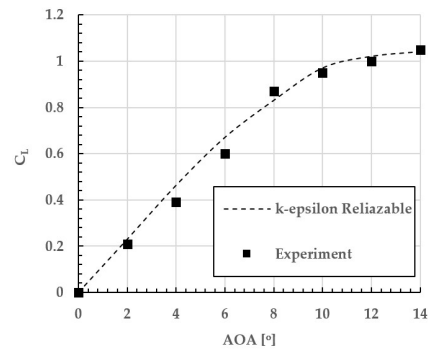


Fig. 6. Computed variation of lift coefficient with angle of attack for NACA airfoil, compared with experimental measurements.

2.2.4 Computational model validation

In order to verify the numerical results, the lift coefficient of the two dimensional NACA 0018 wing sail model in a free flow environment is compared with the experimental results. Fig. 6 shows the predicted variation of CL with AOA for the NACA 0018 using the realizable *k*-epsilon turbulence models. A comparison with the experimental results (Ramsey et al., 2017) also included in Fig. 6, shows that the model is in close agreement with the experiments for AOA varying from 0 to 14 degrees. Therefore, the realizable *k*-epsilon turbulence model is selected for further simulations.

### 3. Results and discussions

#### 3.1. Shape Optimizations

The shape optimization was illustrated in Fig. 7. The curvy twin sail's shapes was chosen randomly.

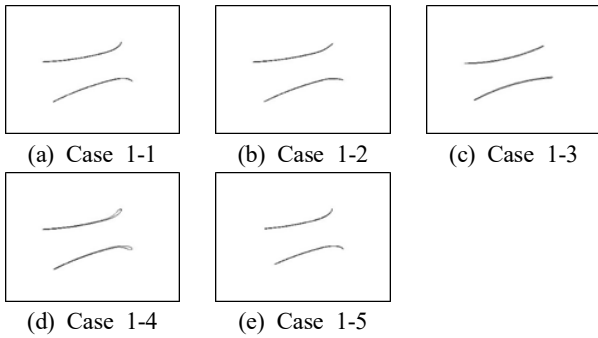


Fig. 7. Optimized Shape Cases Study.

##### 3.1.1. Aerodynamic Performance

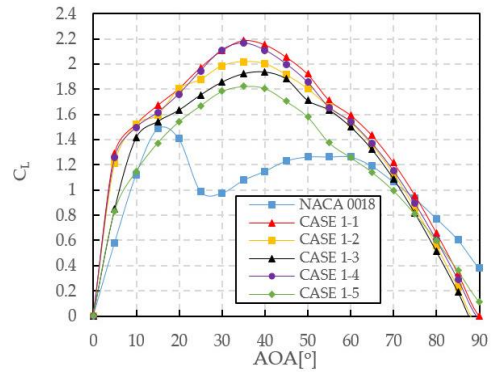
Firstly, the lift and drag coefficients have been investigated. Fig. 8 illustrates the predicted lift and drag coefficients with different sail shapes. To evaluate the performance of curvy twin sail designs, they have been compared with the NACA 0018 wing sail.

The curvy twin sail's lift and drag coefficients are superior to the NACA 0018 wing sail. When the angle of attack is from 0° to 75°, the lift coefficient of curvy twin sails is higher than NACA wing sail. The maximum lift coefficient of the NACA0018 wing sail is 1.5 with AOA = 15° while the curvy twin sails are about 2 with AOA around 35°.

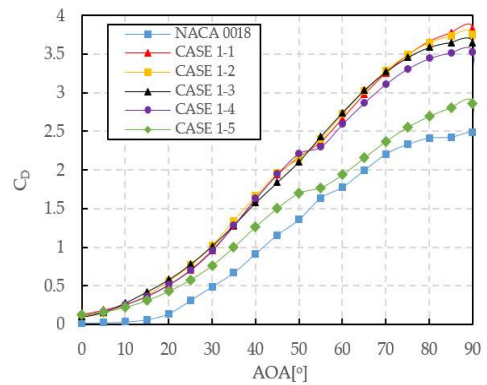
However, due to the curvy shape, the comprehensive performance of curvy twin sail in case 1-1 is higher than others. Therefore, it is necessary to consider sail shape when choosing the shape parameters.

Because the curvy twin sail's lift is generated by lift of sail's two components consisting of starboard and port sails, the lift coefficients need to be investigated separately, as shown in Fig. 9. Although the drag coefficient in curvy twin sail designs is higher than NACA 0018 wingsail, the drag may also form part of the propulsion force for the sailing drone in downwind conditions. So the aerodynamic performance for the curvy twin sail propose in this paper is more excellent.

The port sail mainly creates the favorable lift force while the starboard sail makes an adverse lift in starboard wind conditions. In contrast, the function of port and starboard sails are interchangeable in port wind conditions.

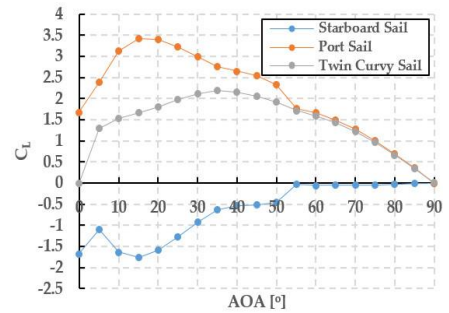


(a) Lift coefficient

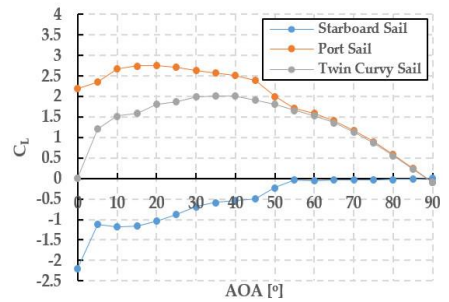


(b) Drag coefficient

Fig. 8. Effect of shape modifications on lift and drag coefficients.



(a) Case 1-1



(b) Case 1-2

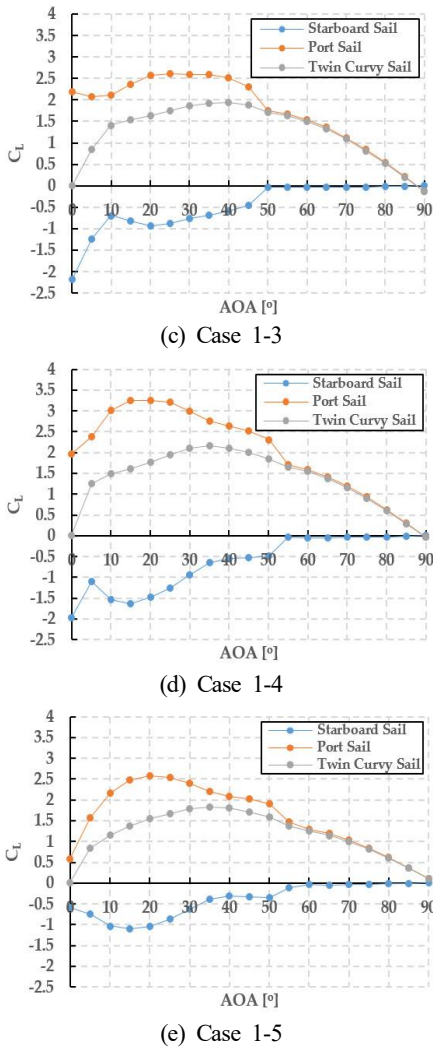


Fig. 9. Lift and Drag coefficients for port and starboard sails

It is convenient only to consider working in starboard wind conditions. The lift coefficient of port sail reaches a peak when the angle of attack is around 15°, but the total lift coefficient is not maximum. It is attributed to the starboard sail generated dramatic minor lift. When the angle of attack is over 55°, the starboard sail is not effected on the lift coefficient. Although there are unequal lifts at the port and starboard sail in curvy twin sail'case optimization, the difference in drag among them is unremarkable.

### 3.1.2. Velocity streamlines and pressure contours

The curvy twin sail with different shapes and NACA 0018 wing sail at AOA = 15°; AOA = 35° the streamlines and static pressure around the sails are depicted in Fig. 10, 11, 12, and 13. On NACA 0018 sail shape, as the angle of attack increases, the upper area separation of flow moves from the trailing edge towards the

leading edge. At the critical angle of attack 15°, upper area flow is more separated, and the NACA 0018 is producing its maximum lift coefficient. As the angle of attack increases further, the upper surface flow becomes more fully separated, and the lift coefficient reduces further.

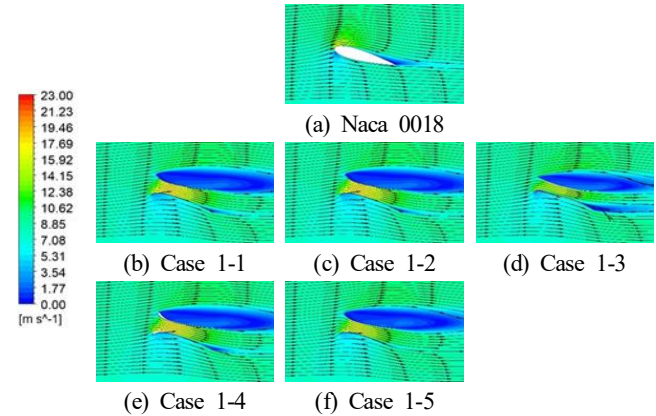


Fig. 10. Velocity contours and streamline at AOA = 15°

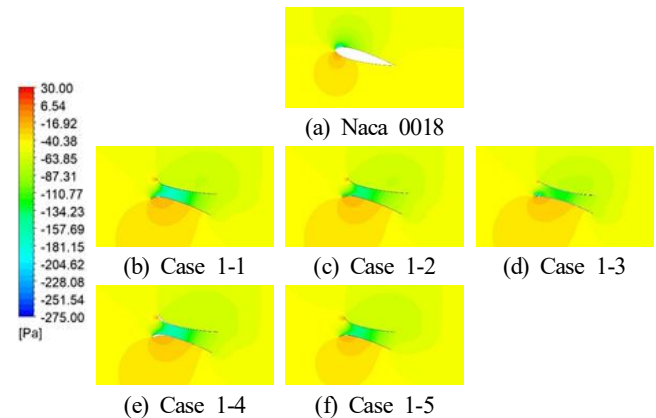


Fig. 11. Pressure contours at AOA = 15°

The flow phenomenon between the port and starboard components of curvy twin sail is different. For port sail, at angle of attack from 5° to 15°, the improvement of the lower area smooth flow and high velocity flow area between two sails took place due to the formation of high pressure region at the lower area and low pressure region at the area between two sails. The difference between these high and low pressure region cause a lift on the port sail. As the angle of attack increases, the flow separation appears at both lower and area between two sails. It leads to a reduction in flow velocity, which hinders the port sail's ability to create lift. For starboard sail, the stall is caused by flow separation at almost angle of attack, resulting in raising pressure at

the upper area, so the adverse lift is created. Consequently, there is a reduction in total lift generated by curvy twin sail. Therefore, the airflow separation at angle of attack  $35^\circ$ , the total lift is able to be maximum. When angle of attack increases from  $15^\circ$  to  $90^\circ$ , the pressure at the spacing area gradually balances with pressure at the upper area, so the adverse lift reduces to  $0^\circ$ .

Fig. 10 shows the velocity streamline and contours on sails at  $AOA = 15^\circ$ . With the curvy twin sails, the flow separation line appears at the upper area. It explains that the pressure at upper area of twin curvy sails is higher than NACA 0018 wing sails, as shown in Fig. 11. Besides, the spacing between the port and starboard sails generates the Laval nozzle effect; hence the increase in velocity make a reduction in pressure at this area. Because of curvy shape of port sails, the pressure distribution of twin curvy sails at the lower area is different and higher than NACA 0018 wing sails. The high pressure region at the lower area in case 1-1 is more extended than others, so generated lift is better than other cases.

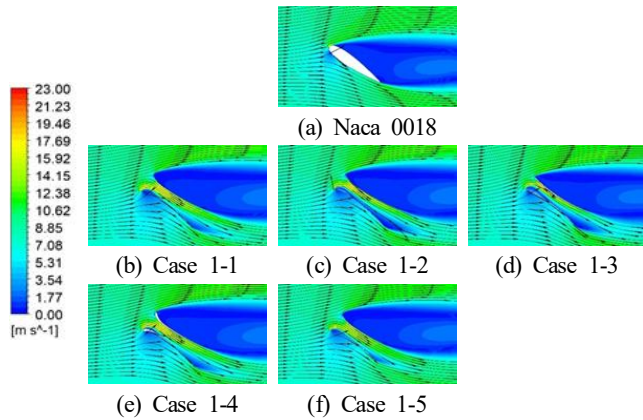


Fig. 12. Velocity contours and streamline at  $AOA = 35^\circ$

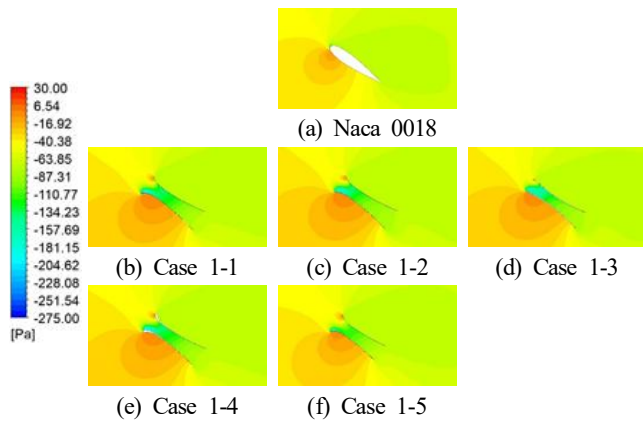


Fig. 13. Pressure contours at  $AOA = 35^\circ$

It can be seen from Fig. 12 that the upper area of curvy twin sails has a large flow separation at  $AOA = 35^\circ$ , and the opening of this area is unnoticeable in comparison with the NACA0018 wing sail. This phenomenon leads to similar pressure at the upper area, as shown in Fig. 13. Nevertheless, the Laval effect still occurs at the area between two sails, the low pressure region maintained. The low velocity at the lower area of curvy twin sails created a higher pressure than the NACA 0018 wing sail. Consequently, the lift generated by curvy twin sails is more effective than NACA 0018 wing sails.

The flow separation appears at the starboard sail's upper area for curvy twin sails at almost angle of attack. With the increase in angle of attack, the flow separation of starboard sail of the curvy twin sails expands and becomes larger. It is explained that raising in pressure at the upper area of the starboard sail creates adverse lift. The lift generated in case 1-1 reaches at peak at  $AOA = 35^\circ$  and a little higher than other cases. Because of the curvy shape, the lower area and area between the two sails flow characteristics are different. The smoother flow at the area between two sails in case 1-1 causes lower pressure, as shown in Fig. 13. This phenomenon leads to little lift improvement in case 1-1 in comparison with other cases.

### 3.1.3. Driving force coefficient comparison

When the true wind direction ( $V_T$ ) is constant and sailing drone permit sailing at constant speed ( $V_S$ ), the relative wind acting on sails is called apparent wind ( $V_A$ ) as illustrated in Fig. 14.

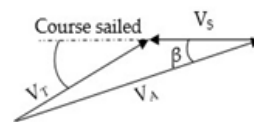


Fig. 14. The velocity triangle.

To investigate the effect of the flow interaction, which has a significant effect on sail's aerodynamic performance, a range of numerical aerodynamic analyses were conducted for sails by varying the true wind direction from  $0^\circ$  to  $180^\circ$  in intervals of  $5^\circ$ . It is supposed that sailing drone permit sailing at course sailed direction and  $V_S = 0$  m/s. Therefore, the apparent wind is equal to the true wind.

The requirement in generating driving force at port side and starboard side working conditions is similar, so the symmetric design of curvy twin sail is applied. The apparent wind direction is

determined from 0° to 180°; the lift and drag generated by sail are calculated. These forces are resolved into driving force ( $F_R$ ) and the heeling force ( $F_H$ ).

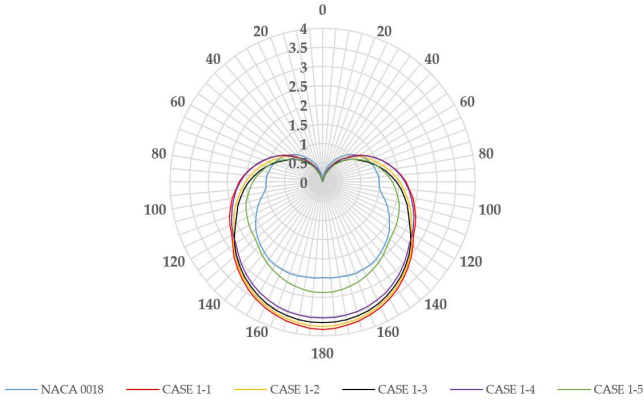


Fig. 15. Driving force coefficient.

The driving force is maximized, corresponding with each certain apparent wind angle. For certain apparent wind speed and angle, the angle of attack adjusted to generate different driving force values, and the maximum driving force is determined. Suppose that the heeling force ( $F_H$ ) is equal to horizontal side force ( $F_S$ ) (Hutchins, 2008) and (Milgram, 1968). For apparent wind angles aligned with the entry point of the sail, the sail lift is the predominant component of propulsion. For apparent wind angles behind the sail, lift diminishes, and drag increases as the predominant component of propulsion. The driving force coefficient in all sail designs is illustrated in Fig. 15. It is shown that the curvy twin sail is more effective than NACA 0018 wing sail in terms of the driving force.

### 3.2 Spacing optimizations

The two dimensional flow around the curvy twin sail at different spacing  $S$  values is studied in detail. In order to better study the effect of the spacing on aerodynamic characteristics and established stall of the curvy twin sail, we analyzed the lift and drag characteristics when the spacing is changed, as shown in Table 6.

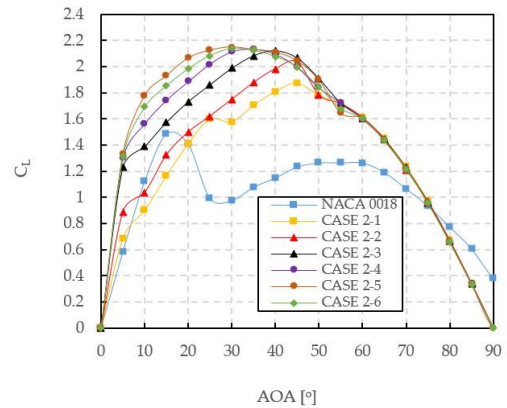
Table 6. Spacing optimizations

Spacing optimization case	S
Case 2-1	0.035 L
Case 2-2	0.07 L
Case 2-3	0.14 L
Case 2-4	0.21 L
Case 2-5	0.28 L
Case 2-6	0.35 L

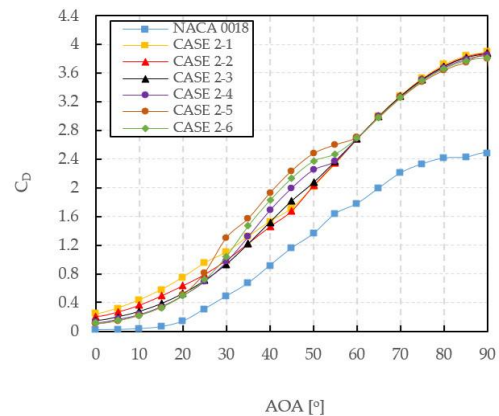
### 3.2.1. Aerodynamic Performance

Fig. 16 shows the lift and drag characteristics for different spacing. The spacing has little effect on the lifts and drags coefficient with AOA from 50° to 90°. The lift coefficient first increases and then reduces with the of spacing extension, especially AOA from 10° to 30°.

As the discussion in shape optimization, the critical angle of attack in case of the curvy twin sail depends on the relationship between lift of the port and starboard sails, so the total lift coefficient at vary spacing optimization is different. The critical angle of attack in case 2-1 and 2-2 is 45°, while in case 2-3, 2-4 is 35°, and case 2-5, 2-6 is 30°. The further angle of attack increases, the upper area flow becomes more fully separated, and lift coefficient reduces further.



(a) Lift coefficients



(b) Drag coefficients

Fig. 16. Effect of spacing modifications on lift and drag coefficients.

### 3.2.2. Velocity streamline and pressure contour

As for the curvy twin sail with different spacing values at AOA = 15° and 25°, the streamlines and static pressure around the sails



are depicted in Fig. 17, 18, 19, and 20. As the velocity streamlines shown, although the velocity flow at the area between two sails increases when the spacing  $S$  reduces and leading to a lower pressure region, the upper area separation point of flow is more significant. As a result of the curvy twin sails' upper area flow is more stall, the higher pressure region is formed above the sail. These higher pressure regions reduce the differential pressure causing a lower lift force.

Fig. 17 illustrates the velocity streamlines and contours on sails at  $AOA = 15^\circ$ . With the increase in spacing  $S$  from  $0.035L$  to  $0.14L$ , the upper area's flow separation narrows considerably. However, the upper area's flow separation is unchanged when the spacing  $S$  is over  $0.14L$ . It explains that the pressure at the upper area in case 2-1; 2-2; 2-3 is higher than in case 2-4; 2-5; 2-6, as shown in Fig. 18. Although the smaller spacing between the port and starboard sails is chosen, the higher velocity flow is generated. The vortex appeared in case 2-1; 2-2; 2-3 leads to a reduction in lift coefficient.

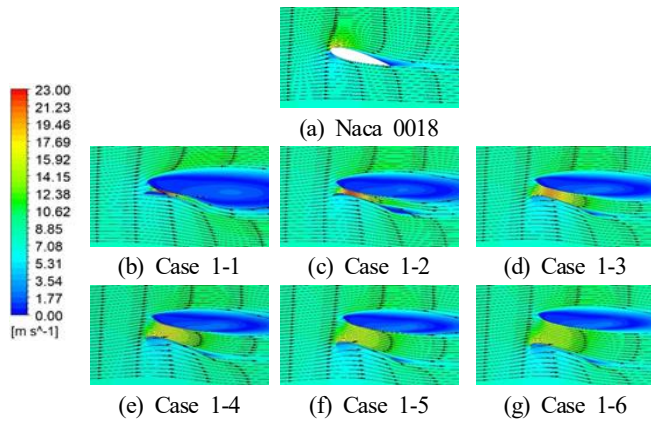


Fig. 17. Velocity contours and streamline at  $AOA = 15^\circ$

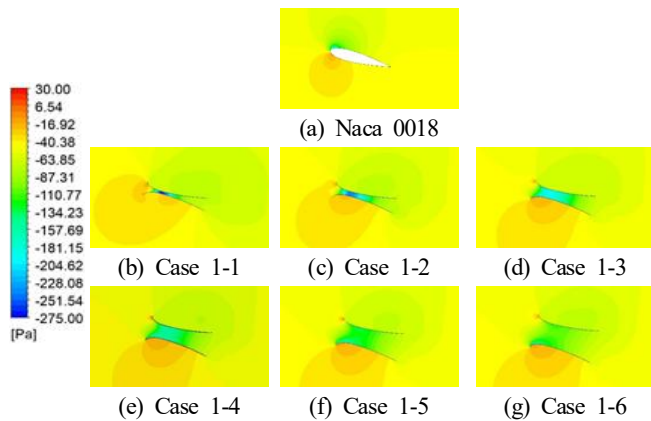


Fig. 18. Pressure contours at  $AOA = 15^\circ$

It can be seen from Fig. 19 that the upper area of sails in case 2-1 has the largest flow separation at  $AOA = 25^\circ$  in comparison with other cases. Although the twin curvy sails shape in spacing optimization is similar, the spacing effects on the flow at the lower area of the curvy twin sail. The spacing  $0.28L$  show the maximum high pressure region at lower area and the small low pressure area at leading edges, so the higher lift force is generated in comparison with other spacing value, as shown in Fig. 20.

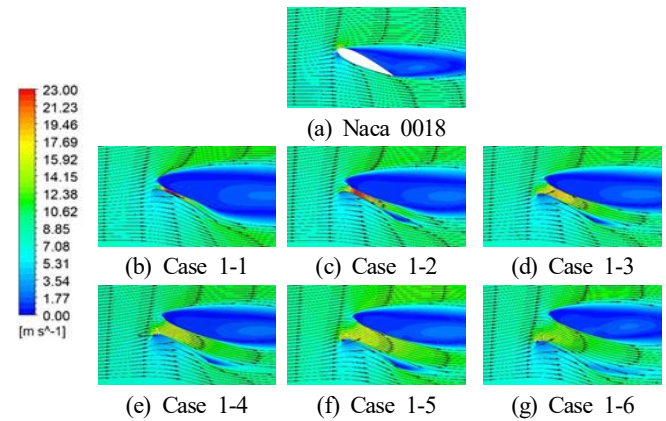


Fig. 19. Velocity contours and streamline at  $AOA = 25^\circ$

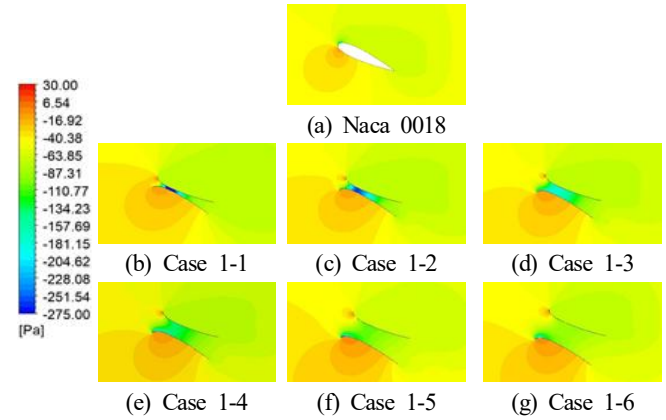


Fig. 20. Pressure contours at  $AOA = 25^\circ$

### 3.2.3. Driving force coefficient comparison

To further verify the driving force performance of curvy twin sail, the lift and drag coefficients are converted to the driving force coefficients, as illustrated in Fig. 21. When the apparent wind angle is less than  $20^\circ$ , the spacing  $0.035L$  and  $0.07L$  twin curvy sails and NACA 0018 wing sail are unable to generate driving force. In contrast, the spacing  $0.28L$  and  $0.35L$  twin curvy sail can generate driving forces from  $10^\circ$  to  $180^\circ$ . Moreover, the case 2-5 corresponding with spacing  $0.28L$  is found that the driving force is most effective.

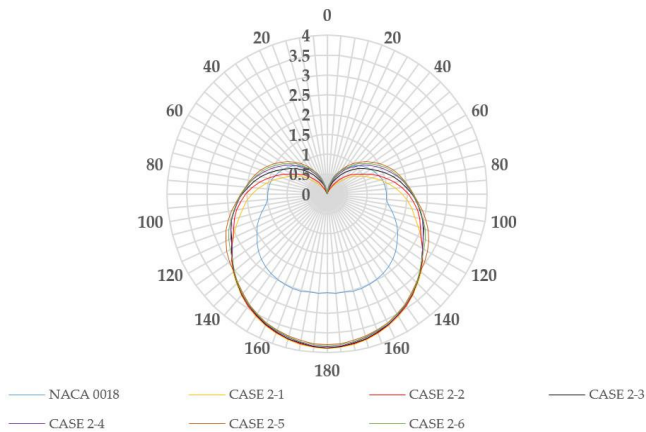


Fig. 21. Driving force coefficient.

#### 4. Conclusions

This study investigated the proposed curvy twin sail and compared it with the NACA 0018 wing sail on the aerodynamic performance. Since sail shape and the spacing between two sail components were used to introduce as optimized parameters. The CFD two dimensional model was generated by using CFD commercial code and validated by published experimental data. The lift, drag, and driving force coefficients were obtained using the same Reynolds number.

The shape optimization results show that the port sail mainly creates the favorable lift force while the starboard sail makes an adverse lift in starboard wind conditions. The port and starboard sails' function is interchangeable in port wind conditions, so the symmetric design is a requirement for the curvy twin sail. When the sail shape changed, the flow separation phenomenon appeared around the sail is considerable. The curvy twin sail showed the performance improvement in lift, drag, and driving force coefficient. This improvement can be attributed to the airstream appearance between two sail components and their curvy shape.

The spacing optimization mainly studies the influence of the spacing on the aerodynamic characteristics of curvy twin sail. When the spacing is  $0.035L$ ,  $0.07L$  and  $0.14L$ , the stall has been dramatically affected the lift coefficient reduction, while flow separation improvement with spacing is  $0.21L$ ,  $0.28L$  and  $0.35L$ . Especially, the spacing  $0.28L$  shows the maximum high pressure at lower area and the small low pressure area at leading edges, so the higher lift is generated compared to other spacing values.

#### Acknowledgements

This research was funded by Ministry of Trade, Industry and Energy (project titled "A Development of Suitable Sail Drone for Korea Coast", Project No. KOITA - CLUSTER - 2020 - 08.

#### References

- [1] Alves, J. C., B. M. Thomas, M. Neal and C. Sauze(2008), Technologies for Autonomous Sailing, Aberystwyth University, UK.
- [2] Borglund, D. and J. Kuttenukeuler(2002), Active Wing Flutter Suppression Using a Trailing Edge Flap. *J. Fluids Struct.*, Vol. 16, No. 3, pp. 271-294.
- [3] Braun, J. B.(2008), High Fidelity CFD Simulations in Racing Yacht Aerodynamic Analysis, in the proceedings of the 3rd High Performance Yacht Design Conference, Auckland, New Zealand, December 2nd-4th, pp. 168-175.
- [4] Carr, L. W. and K. W. McAlister(1983), The effect of a leading-edge slat on the dynamic stall of an oscillating airfoil, *AIAA*, <https://doi.org/10.2514/6.1983-2533>.
- [5] Claughton, A. R. and I. M. C. Campbell(1994), Wind Tunnel Testing of Sailing Rigs, in the proceedings of the International HISWA Symposium on Yacht Design and Yacht Construction, Amsterdam, November 14th-15th, pp. 89-106.
- [6] Daniel, W. A.(1996), The CFD Assisted Design and Experimental Testing of a Wingsail with High Lift Devices, University of Salford, UK.
- [7] Eggert, C. A. and C. L. Rumsey(2017), CFD Study of NACA 0018 Airfoil with Flow Control, *NACA/TM-2017-219602*.
- [8] Elkaim, G. H.(2001), System identification for precision control of wing-sailed GPS-guided catamaran, Stanford University.
- [9] Elkaim, G. H.(2007), Experimental aerodynamic performance of self-trimming wing-sail for autonomous surface vehicles.
- [10] Fallow, J. B.(1996), America's Cup Sail Design, *Journal of Wind Engineering and Industrial Aerodynamics*, Vol. 63, No. 1-3, pp. 183-192.
- [11] Fish, F. E. and J. M. Battle(1995), Hydrodynamic design of the humpback whale flipper, *J. Morphol.*, Vol. 225, No. 1, pp. 51-60.
- [12] Gentry, A. E.(1988), The Application of Computational Fluid Dynamics to Sails, in proceedings of the Symposium on

Hydrodynamic Performance Enhancement for Marine Applications, Newport, Rhode Island, USA.

- [13] Graf, K., C. Bohem, and H. Ranzsch(2009), CFD- and VPP-Challenges in the Design of the New AC90 America's Cup Yacht, in the proceedings of the 19th Chesapeake Sailing Yacht Symposium, Annapolis, USA, March 20th-21st, pp. 1-17.
- [14] Hassan, G. E., A. Hassan, and M. E. Youssef(2014), Numerical Investigation of Medium Range Reynold Number Aerodynamics Characteristics for NACA0018 Airfoil, CFD letter, Vol. 6(4), 175-187.
- [15] Hedges, K. L.(1993), Computer Modelling of Downwind Sails, ME Thesis, University of Auckland, New Zealand.
- [16] Hedges, K. L., P. J. Richards, and G. D. Mallison(1996), Computer Modeling of Downwind Sails, Journal of Wind Engineering and Industrial Aerodynamics, Vol. 63, No. 1-3, pp. 95-110.
- [17] Hutchins, N.(2008), The Use of Ansys CFX in America's Cup Yacht Design, in the proceedings of the 3rd High Performance Yacht Design Conference, Auckland, New Zealand, December 2nd-4th, pp. 185-192.
- [18] Jenkins, R., C. Meinig, N. Lawrence-Slavas, and H. M. Tabisola(2015), The Use of Sail-drones to Examine Spring Conditions in the Bering Sea: Vehicle Specification and Mission Performance, OCEANS 2015 - MTS/IEEE Washington. Retrieved 01 17, 2017.
- [19] Kutenkeuler, J. and R. Mikael(2017), Design of free-rotating wing sail for autonomous sailboat, KTH Royal Institute of Technology, Sweden.
- [20] Li, Q., Y. Nihei, T. Nakashima, and Y. Ikeda(2015), A study on the performance of cascade hard sails and sail-equipped vessels, Ocean Eng., Vol. 98, pp. 23-31.
- [21] Milgram, J. H.(1968), The Aerodynamics of Sails, In the proceedings of the 7th Symposium of Naval Hydrodynamic, pp. 1397-1434.
- [22] Neal, M. and C. Saauze(2008), Design considerations for sailing robots performing long-term autonomous oceanography, Austrian Journal of Artificial Intelligence, Vol. 2, pp. 4-10.
- [23] Seifert, A., T. Bachar, D. Koss, M. Shepshelovich, and I. Wygnanski(1993), Oscillatory Blowing: A Tool to Delay Boundary-Layer Separation, AIAA J., Vol. 31, No. 11, pp. 2052-2060.

---

Received : 2020. 11. 24.

Revised : 2020. 12. 21.

Accepted : 2020. 12. 28.