



ARTICLE

## Separation and Purification of Lipase Inhibitory Peptide from Fermented Milk by *Lactobacillus plantarum* Q180

Seulki Kim and Sang-Dong Lim\*

Fermented Food Research Team, Korea Food Research Institute, Wanju 55365, Korea

OPEN ACCESS

Received August 27, 2019  
Revised November 1, 2019  
Accepted November 9, 2019

\*Corresponding author : Sang-Dong Lim  
Fermented Food Research Team, Korea Food  
Research Institute, Wanju 55365, Korea  
Tel: +82-63-219-9082  
Fax: +82-63-219-9288  
E-mail: [lmsd@kfri.re.kr](mailto:lmsd@kfri.re.kr)

\*ORCID  
Seulki Kim  
<https://orcid.org/0000-0002-0064-9366>  
Sang-Dong Lim  
<https://orcid.org/0000-0002-1500-4413>

**Abstract** In this study, we separated and purified lipase inhibitory peptide from fermented milk by *Lactobacillus plantarum* Q180 with the aim of developing a new functional anti-lipase activity yogurt product. *L. plantarum* 180 was inoculated into 10% reconstituted skimmed milk and incubated at 37°C until the pH of the culture reached pH 4.4. The lipase activity was measured using porcine pancreatic lipase. The lipase inhibitory peptides were gradually isolated by ultrafiltration, reversed phase column chromatography (RPC), reversed phase high-performance liquid chromatography (RP-HPLC), and gel permeation high-performance liquid chromatography (GP-HPLC) from the fermented milk by *L. plantarum* Q180. An ODS-AQ column was used for the RPC, a Vydac C18 column for the RP-HPLC, and a Superdex Peptide HR column for the GP-HPLC. The peptide was composed of Asp, Thr, Ile, Ser, Ala, and Gln, and the anti-lipase activity (IC<sub>50</sub>) was 2,817 µg/mL.

**Keywords** separation, purification, lipase inhibitory peptide, fermented milk, *Lactobacillus plantarum*

### Introduction

Obesity is a medical condition in which excess body fat accumulates to the extent that it may have a negative effect on health, leading to reduced life expectancy and/or increased health problems. Diverse approaches to the prevention and treatment of obesity have been reported (Birari and Bhutani, 2007). Among these, both natural and synthetic pancreatic lipase inhibitors are effective in preventing obesity, which is likely to be due to their inhibition of intestinal lipid absorption (Hirose et al., 2013). For these reasons, lipase inhibitors are used in designing drugs for the treatment of obesity (Gupta et al., 2004). Many metabolic products obtained from microbes show potent pancreatic lipase inhibitory activity. Known products include Lipstatin produced by *Streptomyces toxytricini* (Hochuli et al., 1987; Weibel et al., 1987), Panclincins by *Streptomyces* sp. NR 0619 (Mutoh, et al., 1994; Yoshinari et al., 1994), Valilactone by *Streptomyces albolongus* (Kitahara et al., 1987), Ebelactones by *Streptomyces*

*aburaviensis* (Umezawa, et al., 1980), Esteratin by *Streptomyces lavendulae* (Umezawa, et al., 1978), Caulerpenyne by *Caulerpa taxifolia* (Tomoda, et al., 2002), Vibralactone by microfungi *Boreostereum virans* (Liu, et al., 2006), and Percyquinin by *Basidiomycete stereum complicatum* (Cordula, et al., 2003). Also, peptides that have been found to selectively inhibit fat intake include Enterostatin (Okada et al., 1991; Sorhede et al., 1993) and serotonin (Blundell and Lawton, 1995; Smith et al., 1997). Milk peptides have been shown to have antihypertensive, anti-oxidant and antithrombotic effects, and to influence insulin secretion and glucose control. They also influence lipid concentrations, immune response, inflammation and markers of oxidative stress (Marcone et al., 2017). However, little research has been conducted on the anti-lipase activity of peptide from fermented milk by lactic acid bacteria.

In this study, peptides with a lipase inhibitory effect were separated and purified from fermented milk by *Lactobacillus plantarum* Q180, a strain isolated from human feces, with a view to developing a new functional anti-lipase activity yogurt product. An ODS-AQ column, a Vydac column, and a Superdex Peptide column were used to separate and purify the peptides.

## Materials and Methods

### Lactic acid bacteria

*Lactobacillus plantarum* Q180 isolated from feces of healthy adults (June, 2012): This strain was selected by screening for probiotic properties such as acid and bile tolerance, antibacterial activity, and antibiotic tolerance (Park et al., 2014). The culture was maintained in MRS broth (Becton, Dickinson and Company, Franklin Lakes, NJ, USA).

### Sample preparation

*Lactobacillus plantarum* Q180 was inoculated into 10% reconstituted skimmed milk and incubated at 37°C until the pH of the culture reached pH 4.4.

### Ultrafiltration

Ultrafiltration (UF) was performed using a modified version of the method described by Aguilar-Toala et al. (2017). The >10,000-dalton fraction and the <10,000-dalton fraction were separated from fermented milk by an ultrafilter equipped with a membrane having a cut-off molecular weight of 10,000. After that, the fractions were separated into a 1,000-10,000-dalton fraction and a <1,000-dalton fraction by an ultrafilter equipped with a membrane having a cut-off molecular weight of 1,000. They were then evaporated and freeze-dried under vacuum conditions to prepare the peptides.

### Reverse-phase chromatography using an ODS-AQ column

A modified version of the method of reverse-phase chromatography using an ODS-AQ column reported by Li et al. (2007) was used. The peptide fractions were separated and purified by reverse-phase chromatography using an ODS-AQ column (26×300 mm, Vt: 1,865 mL). Elution was carried out with water and ethanol at a flow rate of 1.0 mL/min. The peaks detected at 215 nm and 280 nm were evaporated and freeze-dried under vacuum conditions.

### Reverse-phase chromatography using a Vydac C18 column

The peptide fractions were separated and purified by reverse-phase chromatography using a Vydac C18 column (10×250

mm, Vt: 19.6 mL). Elution was carried out with 0.1% TFA in water and 0.1% TFA in acetonitrile at a flow rate of 2.0 mL/min. The peaks detected at 215 nm and 280 nm were evaporated and freeze-dried under vacuum conditions.

### Gel permeation chromatography using a Superdex Peptide column

The peptide fractions were separated and purified by gel permeation chromatography using a Superdex Peptide column (10×30 mm, Vt: 24 mL). Elution was carried out with water at a flow rate of 0.5 mL/min. The peaks detected at 215 nm and 280 nm were evaporated and freeze-dried under vacuum conditions.

### Amino acid sequence analysis

The amino acid sequence of the peptides separated from fermented milk by *L. plantarum* Q180 was analyzed using a Procise TM (protein sequencing system, Perkin Elmer, Waltham, MA, USA).

### Lipase inhibitory activity test

A modified version of a method of lipase inhibitory activity determination reported by Lee et al. (1993) was used. The pancreatic lipase activity was measured using porcine pancreatic lipase (Sigma-Aldrich, St. Louis, MO, USA). 0.1 mg/mL of a sample solution dissolved in water, and 0.167 mM p-nitrophenyl palmitate (PNP; Sigma) solution and 0.061M Tris-HCl buffer (pH 8.5) were mixed in the well of a plate, to which 0.3 mg/mL of the lipase solution was then added to start the enzyme reaction. After incubation at 25°C for 10 min, its absorbance was measured at 405 nm.

### Statistical analysis

The results are expressed as the mean±SD. The statistical analysis was performed with a statistical analysis system (SAS, SAS Institute Inc., Cary, NC, USA).

## Results and Discussion

### Ultrafiltration

UF was used to separate the peptides from the fermented milk. The cut-off threshold ranged from 3 to 14 kDa depending on the targeted peptides (Aguilar-Toala et al., 2017). Until pH 4.4 was reached, 10% reconstituted skimmed milk was incubated at 37°C using *L. plantarum* Q180. After UF of the fermented skimmed milk using the cut-off membranes (MW 10,000 and 1,000), the anti-lipase activity of the 1,000-10,000-dalton fraction was slightly higher than that of the <1,000-dalton fraction. These results suggest that low molecular peptides do have lipase inhibitory activities (Table 1). The lipase inhibitory activity in this study was higher than the result obtained for fermented milk using *L. plantarum* (Gil-Rodriguez and

**Table 1.** Fractionation of lipase inhibitors by ultrafiltration from fermented milk by *Lactobacillus plantarum* Q180

Molecular weight	Anti-lipase activity (%)	Yield (%)
1,000 MW below	46.83±2.54	96.10
1,000–10,000 MW	49.85±5.83	1.64
10,000 MW above	7.73±4.01	2.25

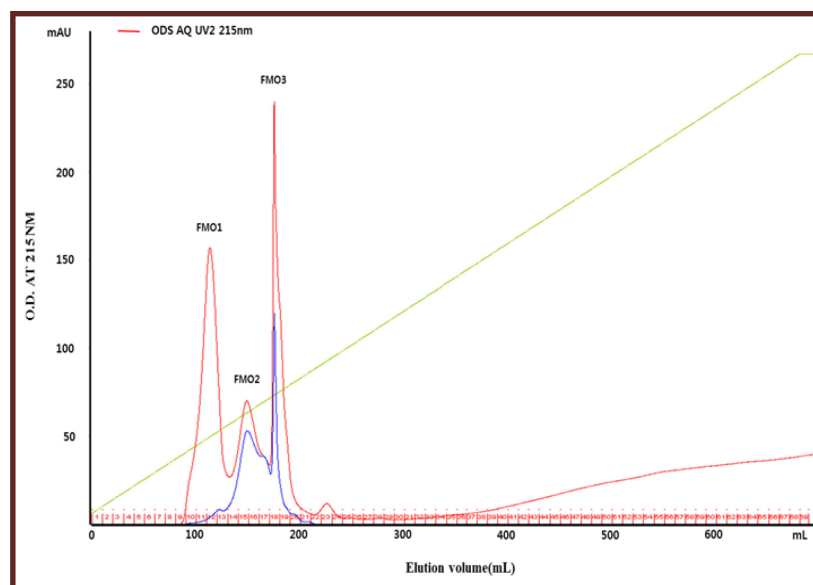
Beresford, 2019). In consideration of the high yield, the <1,000-dalton fraction was separated using the ODS AQ column.

### Reverse-phase chromatography by ODS AQ column

Reverse-phase chromatography is known to be an effective method of separating and purifying peptides from protein hydrolysates (Herraiz, 1997). After concentrating the <1,000-dalton fraction in a vacuum evaporator and freeze-dried, it was separated and purified by reverse-phase chromatography using an ODS-AQ column. The peaks separated by using the ODS AQ column were named FMO1, FMO2, and FMO3 (Fig. 1). The three fractions were concentrated in a vacuum evaporator and freeze-dried, respectively, and then measured for yield and anti-lipase activity. As a result, the lipase inhibitory activity of fraction FMO1 was the highest at 73.32%, and its yield was also the highest at 89.72% (Table 2).

### Reverse-phase chromatography by Vydac C18 column

The C18 column is particularly useful for separating peptides of less than 5,000 daltons, and is usually the column of choice for the separation of peptides resulting from protease digestion of proteins (Carr, 2013). Fraction FMO1, which has the highest yield and anti-lipase activity among FMO1, FMO2, and FMO3, was re-separated using the Vydac column. The peaks separated by using the Vydac C18 column were named FMO1V1 and FMO1V2 (Fig. 2). Fractions FMO1V1 and FMO1V2 were concentrated in a vacuum evaporator and freeze-dried, then measured for yield and anti-lipase activity. As a result, the

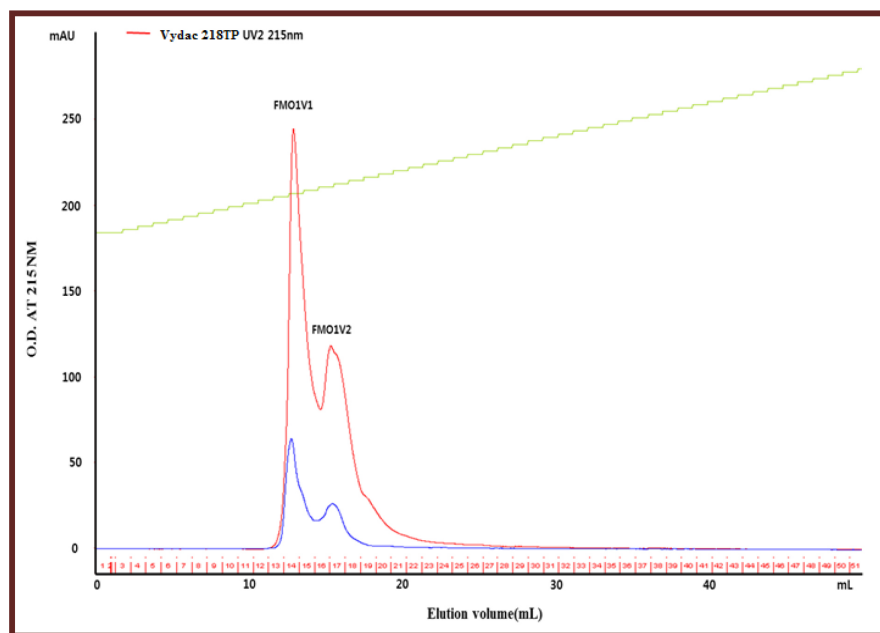


**Fig. 1.** Reverse phase column chromatogram of fermented milk by *Lactobacillus plantarum* Q180 on ODS AQ (2.6×30 cm). Eluent: A solution (water), B solution (ethanol). Flow rate: 10 mL/min, Fraction: 10 mL/tube. Fractionation: FMO1 (tube on, 10–13), FMO2 (tube on, 14–17), FMO3 (tube on, 18–20).

**Table 2.** Purification of lipase inhibitory peptide by ODS-AQ column from fermented milk peptide

Peak name	Anti-lipase activity (%)	Yield (%)
FMO1	73.32±0.02	89.72
FMO2	71.43±0.03	5.89
FMO3	-	4.40

-, not detected.



**Fig. 2.** Reverse phase column chromatogram of fermented milk by *Lactobacillus plantarum* Q180 on Vydac 218TP column (1.0×25 cm). Eluent: A solution (0.1% TFA in water), B solution (0.1% TFA in ACN). Flow rate: 2 mL/min, Fraction: 1 mL/tube. Fractionation: FMO1V1 (tube on, 13–16), FMO1V2 (tube on, 17–21).

lipase inhibitory activity of FMO1V2 was higher than that of FMO1V1, and the yield of FMO1V2 was 36.40% (Table 3).

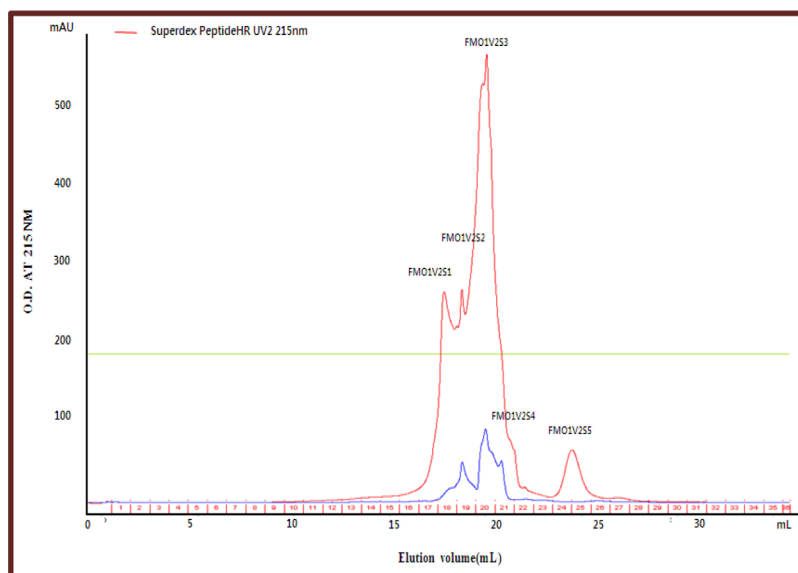
### Reverse-phase chromatography by Superdex peptide HR column

The Superdex Peptide HR 10/30 column showed better chromatographic resolution for peptides with an MW in the range of 75-dalton to 12,384-dalton than the TSK gel G2000 SWXL column, especially for peptides with an MW of less than 3,000-dalton (Su et al, 2013). Fraction FMO1V2, which has higher anti-lipase activity than FMO1V1, was separated using the Superdex Peptide HR column. The peaks separated by using the Superdex Peptide HR column were named FMO1V2S1, FMO1V2S2, FMO1V2S3, FMO1V2S4, and FMO1V2S5 (Fig. 3). The yield and anti-lipase activity of these fractions were measured after concentrating and freeze-drying them in a vacuum evaporator. The anti-lipase activity ( $IC_{50}$ ) value and the yield of FMO1V2S1 were 2,931  $\mu\text{g/mL}$  and 30.54%, respectively (Table 4).

Fraction FMO1V2S1, which has higher anti-lipase activity than the other fractions, was re-separated using the Superdex Peptide HR column. As a result of separation, there were two peaks; and these fraction were named FMO1V2S1S1 and FMO1V2S1S2 (Fig. 4). FMO1V2S1S1 and FMO1V2S1S2 were concentrated in a vacuum evaporator and freeze-dried, and then their yield and anti-lipase activity were determined. The anti-lipase activity ( $IC_{50}$ ) value and the yield of FMO1V2S1S1 were 2,817  $\mu\text{g/mL}$  and 73.92%, respectively, which were higher than those of FMO1V2S1S2 (Table 5). Gil-Rodriguez and Beresford (2019) reported that a peptide released from a milk protein hydrolyzed during fermentation by *L. helveticus* is the

**Table 3.** Purification of lipase inhibitory peptide by Vydac 218TP column from fermented milk peptide

Peak name	Anti-lipase activity (%)	$IC_{50}$	Yield (%)
FMO1V1	>100%	3,592 $\mu\text{g/mL}$	63.59
FMO1V2	>100%	2,880 $\mu\text{g/mL}$	36.40

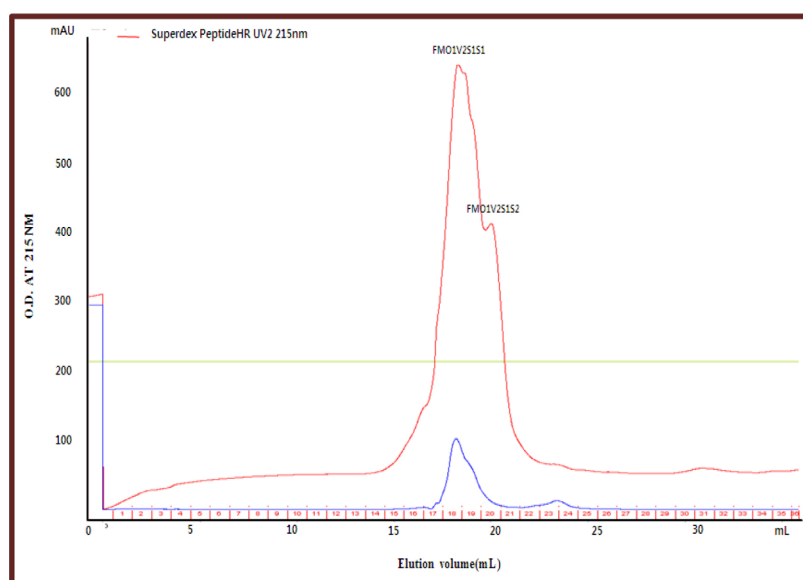


**Fig. 3.** Gel permeation chromatogram of fermented milk by *Lactobacillus plantarum* Q180 on the Superdex Peptide column. Eluent: Water. Flow rate: 0.5 mL/min, Fraction: 1 mL/tube, Fractionation: FMO1V2S1 (tube on, 17–18), FMO1V2S2 (tube on, 19), FMO1V2S3 (tube on, 20), FMO1V2S4 (tube on, 21), FMO1V2S5 (tube on, 24–25).

**Table 4.** Purification of lipase inhibitory peptide by Superdex Peptide HR column from fermented milk peptide

Peak name	Anti-lipase activity (%)	IC <sub>50</sub>	Yield (%)
FMO1V2S1	>100%	2,931 µg/mL	30.54
FMO1V2S2	>100%	3,079 µg/mL	36.21
FMO1V2S3	91.42±2.02	-	29.21
FMO1V2S4	89.12±1.98	-	3.63
FMO1V2S5	-	-	0.41

-, not detected.



**Fig. 4.** Gel permeation chromatogram of fermented milk by *Lactobacillus plantarum* Q180 on the Superdex Peptide column. Eluent: Water. Flow rate: 0.5 mL/min, Fraction: 1 mL/tube. Fractionation: FMO1V2S1S1 (tube on, 16–19), FMO1V2S1S2 (tube on, 20–21).

**Table 5. Purification of lipase inhibitory peptide by Superdex Peptide HR column from fermented milk peptide**

Variable	Anti-lipase activity (%)	IC <sub>50</sub>	Yield (%)
FMO1V2S1S1	>100%	2,817 µg/mL	73.92
FMO1V2S1S2	>100%	3,000 µg/mL	26.07

active component, and that these fractions exhibited two peaks corresponding to small-sized (<2 kDa) peptides.

### Analysis of the amino acid sequence

The fermented milk by *L. plantarum* Q180 was sequentially separated using the ODS AQ column, Vydac C18 column, and Superdex Peptide HR column. The peptide was composed of Asp, Thr, Ile, Ser, Ala, and Gln. The IC<sub>50</sub> of the lipase inhibitory activity was 2,817 µg/mL. Okada et al. (1991) reported that Enterostatin (Val-Pro-Asp-Pro-Arg), the activation peptide of pancreatic procolipase, selectively reduces fat intake. In addition, they reported that valine-proline-aspartate-proline-arginine (VPDPR) inhibited fat intake but had no effect on carbohydrate or protein intake.

## Conclusion

This study aimed to separate and purify the lipase inhibitory peptide from fermented milk by *L. plantarum* Q180 for the purpose of developing a new functional anti-lipase activity yogurt product. Lipase inhibitory peptides were gradually isolated by UF, reversed phase column chromatography (RPC), reversed phase high-performance liquid chromatography (RP-HPLC), and gel permeation high-performance liquid chromatography (GP-HPLC) from the fermented milk by *L. plantarum* Q180.

After the UF of fermented milk by *L. plantarum* Q180, the anti-lipase activity and the yield of the <1,000-dalton fraction were 46.83% and 96.10%, respectively. When the <1,000-dalton fraction was separated using the ODS AQ column, the lipase inhibitory activity of fraction FMO1 was the highest at 73.32%, and its yield was also the highest at 89.72%. Fraction FMO1 was re-separated using the Vydac C18 column, and the anti-lipase activity (IC<sub>50</sub>) value and the yield of FMO1V2 were 2,880 µg/mL and 36.40%, respectively. After FMO1V2 was separated using the Superdex Peptide HR column, the anti-lipase activity (IC<sub>50</sub>) value and the yield of FMO1V2S1 were 2,931 µg/mL and 30.54%, respectively. As a result of the separation of FMO1V2S1, the anti-lipase activity (IC<sub>50</sub>) value and the yield of FMO1V2S1S1 were 2,817 µg/mL and 73.92%, respectively,

The peptide was composed of Asp, Thr, Ile, Ser, Ala, and Gln, and the anti-lipase activity (IC<sub>50</sub>) was 2,817 µg/mL. Thus, the results of this study could be applied to the development of a new functional anti-lipase activity yogurt product by *Lactobacillus plantarum* Q180.

## Conflict of Interest

The authors declare no potential conflict of interest.

## Acknowledgments

This work was supported by the Korea Institute of Planning and Evaluation for Technology in Food, Agriculture, Forestry (IPET) through the High Value-added Food Technology Development Program (No. 111151-3), which is funded by the Ministry of Agriculture, Food and Rural Affairs (MAFRA) and the Korea Food Research Institute (Project No: ER180900-02).

## Author Contributions

Conceptualization: Lim SD. Data curation: Lim SD. Formal analysis: Kim S. Methodology: Kim S, Lim SD. Software: Kim S. Validation: Lim SD. Investigation: Kim S. Writing -original draft: Kim S, Lim SD. Writing -review & editing: Kim S, Lim SD.

## Ethics Approval

This article does not require IRB/IACUC approval because there are no human and animal participants.

## References

- Aguilar-Toala JE, Santiago-Lopez L, Peres CM, Peres C, Garcia HS, Vallejo-Cordoba B, Gonzalez-Cordova AF, Hernandez-Mendoza A. 2017. Assessment of multifunctional activity of bioactive peptides derived from fermented milk by specific *Lactobacillus plantarum* strains. *J Dairy Sci* 100:65-75.
- Birari RB, Bhutani KK. 2007. Pancreatic lipase inhibitors from natural sources: Unexplored potential. *Drug Discov Today* 12:879-889.
- Blundell JE, Lawton CL. 1995. Serotonin and dietary fat intake: Effects of dexfenfluramine. *Metabolism* 44:33-37.
- Carr D. 2013. Protein and peptide analysis and purification: VYDAC reversed phase handbook. 5<sup>th</sup> ed. Grace, Columbia, MO, USA. p 11.
- Cordula H, Michael K, Guenter M, Luigi T. 2003. Percyquinnin, a process for its production and its use as a pharmaceutical. US Patent 6,596,518.
- Gil-Rodriguez AM, Beresford TP. 2019. Lipase inhibitory activity of skim milk fermented with different strains of lactic acid bacteria. *J Funct Foods* 60:103413.
- Gupta R, Gupta N, Rathi P. 2004. Bacterial lipases: An overview of production, purification and biochemical properties. *Appl Microbiol Biotechnol* 64:763-781.
- Herraiz T. 1997. Sample preparation and reversed phase-high performance liquid chromatography analysis of food-derived peptide. *Anal Chim Acta* 352:119-139.
- Hirose M, Ando T, Shofiqur R, Umeda K, Kodama Y, Nguyen SV, Goto T, Shimada M, Nagaoka S. 2013. Anti-obesity activity of hen egg anti-lipase immunoglobulin yolk, a novel pancreatic lipase inhibitor. *Nutr Metab* 10:70-75.
- Hochuli E, Kupfer E, Maurer R, Meister W, Mercadal Y, Schmidt K. 1987. Lipstatin, an inhibitor of pancreatic lipase, produced by *Streptomyces toxytricini* II. Chemistry and structure elucidation. *J Antibiot* 40:1086-1091.
- Kitahara M, Asano M, Naganawa H, Maeda K, Hamada M, Aoyagi T, Umezawa H, Iitaka Y, Nakamura H. 1987. Valilactone, an inhibitor of esterase, produced by *Actinomycetes*. *J Antibiot* 40:1647-1650.
- Lee YP, Chung GH, Rhee JS. 1993. Purification and characterization of *Pseudomonas fluorescens* SIK W1 lipase expressed in *Escherichia coli*. *Biochim Biophys Acta* 1169:156-164.
- Li B, Chen F, Wang X, Ji B, Wu Y. 2007. Isolation and identification of antioxidative peptides from porcine collagen hydrolysate by consecutive chromatography and electrospray ionization-mass spectrometry. *Food Chem* 102:1135-1143.
- Liu DZ, Wang F, Liao TG, Tang JG, Steglich W, Zhu HJ, Liu JK. 2006. Vibralactone: A lipase inhibitor with an unusual fused  $\beta$ -lactone produced by cultures of the Basidiomycete *Boreostereum vibrans*. *Org Lett* 8:5749-5752.



- Marccone S, Belton O, Fitzgerald DJ. 2017. Milk-derived bioactive peptides and their health promoting effects: A potential role in atherosclerosis. *Br J Clin Pharmacol* 83:152-162.
- Mutoh M, Nakada N, Matsukuma S, Ohshima S, Yoshinari K, Watanabe J, Arisawa M. 1994. Panclitics, novel pancreatic lipase inhibitors I. Taxonomy, fermentation, isolation and biological activity. *J Antibiot* 47:1369-1375.
- Okada S, York DA, Bray GA, Erlanson-Albertsson C. 1991. Enterostatin (Val-Pro-Asp-Pro-Arg), the activation peptide of procolipase, selectively reduces fat intake. *Physiol Behav* 49:1185-1189.
- Park SY, Cho SA, Kim SH, Lim SD. 2014. Physiological characteristics and anti-obesity effect of *Lactobacillus plantarum* Q180 isolated from feces. *Korean J Food Sci Anim Resour* 34:645-653.
- Smith BK, York DA, Bray GA. 1997. Chronic *d*-fenfluramine treatment reduces fat intake and independent of macronutrient preference. *Pharmacol Biochem Behav* 60:105-114.
- Sorhede M, Mei J, Erlanson-Albertsson C. 1993. Enterostatin: A gut-brain peptideregulating fat intake in rat. *J Physiol Paris* 87:273-275.
- Su G, Ren J, Zhao M, Sun DW. 2013. Comparison of superdex peptide HR 10/30 column and TSK Gel G2000 SWXL column for molecular weight distribution analysis of protein hydrolysates. *Food Bioprocess Technol* 6:3620-3626.
- Tomoda H, Namatame I, Omura S. 2002. Microbial metabolites with inhibitory activity against lipid metabolism. *Proc Jpn Acad* 78:217-240.
- Umezawa H, Aoyagi T, Hazato T, Uotani K, Kojima F, Hamada M, Takeuchi T. 1978. Esterastin, an inhibitor of esterase produced by *Actinomycetes*. *J Antibiot* 31:639-641.
- Umezawa H, Aoyagi T, Uotani K, Hamada M, Takeuchi T, Takahashi S. 1980. Ebelactone, an inhibitor of esterase, produced by *Actinomycetes*. *J Antibiot* 33:1594-1596.
- Weibel EK. 1987. Lipstatin, an inhibitor of pancreatic lipase, produced by *Streptomyces toxytricini*. I. Producing organism, fermentation, isolation and biological activity. *J Antibiot* 40:1081-1085.
- Yoshinari K, Aoki M, Ohtsuka T, Nakayama N, Itezono Y, Mutoh M, Watanabe J, Yokose K. 1994. Panclitics, novel pancreatic lipase inhibitors II. Structural elucidation. *J Antibiot* 47:1376-1384.