

Anti-inflammatory effects of *Lactobacillus reuteri* LM1071 via MAP kinase pathway in IL-1 β -induced HT-29 cells

Tae-rahk Kim¹, Kyoung-sook Choi¹, Yosep Ji^{2,3}, Wilhelm H. Holzapfel^{2,3} and Min-Gyu Jeon^{1*}

¹Center for Research and Development, LACTOMASON, Jinju 52840, Korea

²Advanced Green Energy and Environment, Handong Global University, Pohang 37554, Korea

³HEM, Suwon 16229, Korea



Received: Jul 17, 2020
 Revised: Aug 3, 2020
 Accepted: Aug 27, 2020

*Corresponding author

Min-Gyu Jeon
 Center for Research and Development,
 LACTOMASON, Jinju 52840, Korea.
 Tel: +82-55-755-5355
 E-mail: jmg712@lactomason.com

Copyright © 2020 Korean Society of Animal Sciences and Technology. This is an Open Access article distributed under the terms of the Creative Commons Attribution Non-Commercial License (<http://creativecommons.org/licenses/by-nc/4.0/>) which permits unrestricted non-commercial use, distribution, and reproduction in any medium, provided the original work is properly cited.

ORCID

Tae-rahk Kim
<https://orcid.org/0000-0002-8066-1161>
 Kyoung-sook Choi
<https://orcid.org/0000-0003-0345-0085>
 Yosep Ji
<https://orcid.org/0000-0001-5349-7901>
 Wilhelm H. Holzapfel
<https://orcid.org/0000-0002-3669-1419>
 Min-Gyu Jeon
<https://orcid.org/0000-0003-2003-1130>

Competing interests

No potential conflict of interest relevant to this article was reported.

Funding sources

Not applicable.

Abstract

Lactic acid bacteria are well-known probiotics, conferring several health benefits. In this study, we isolated lactobacilli from human breast milk and identified *Lactobacillus reuteri* LM1071 (RR-LM1071) using 16S rDNA sequencing. We tested the hemolytic activity, biogenic amine production, and antibiotic susceptibility of this strain to assess its safety. RR-LM1071 was found to be negative for hemolytic activity and biogenic amine production, as well as was measured in susceptible level for antibiotics in the minimal inhibitory concentration (MIC) test. The adhesive properties of RR-LM1071 were higher than those of LGG in HT-29 cells, and showed a greater hydrophobicity than LGG in hexadecane solvent. Under inflammatory conditions, RR-LM1071 suppressed the mRNA expression of IL-6, TNF- α , and IL-4 produced in IL-1 β -induced HT-29 cells. Our results suggest that RR-LM1071 is a safe and valuable probiotic that can be used for the treatment of inflammatory bowel disease.

Keywords: Probiotics, Safety, Adhesive, *Lactobacillus reuteri*, Human breast milk

INTRODUCTION

The gastrointestinal (GI) tract of humans harbors diverse bacteria, which have mutually evolved with the host [1–4]. These bacteria aid the host in digesting carbohydrates, resisting infections, and regulating the immune system [5,6]. Lactic acid bacteria (LAB), which produce lactic acid as the sole or main product of carbohydrate metabolism, are well-known probiotics. They are found in the GI tract, oral cavity, saliva, and breast milk, ranging from humans to animals. They are also abundant in some plants and fermented foods. One species of LAB, *Lactobacillus reuteri* (*L. reuteri*), first isolated in 1962, helps in the prevention and/or amelioration of multiple disorders in the host [7].

Since the effects of probiotics depend on the genera, species, and strain, it is essential to verify their identity, characterization, and safety. The main criteria for selecting a probiotic strain is its safety, which includes the verification of hemolytic activity, biogenic amine production, and antibiotic resistance, as well as its adhesion to the intestinal mucosa [8–10].

Acknowledgements

We would like to thank Yosep Ji and Wilhelm H. Holzapfel (Holzapfel Effective Microbes, HEM) for providing the data on the safety of RR-LM1071.

Availability of data and material

Upon reasonable request, the datasets of this study can be available from the corresponding author.

Authors' contributions

Conceptualization: Kim Tr, Jeon MG.
Data curation: Kim Tr, Jeon MG.
Formal analysis: Kim Tr, Jeon MG.
Methodology: Ji Y, Holzapfel WH, Jeon MG.
Software: Jeon MG.
Validation: Ji Y, Holzapfel WH, Jeon MG.
Investigation: Ji Y, Jeon MG.
Writing - original draft: Jeon MG.
Writing - review & editing: Kim Tr, Choi Ks, Jeon MG.

Ethics approval and consent to participate

This article does not require IRB/IACUC approval because there are no human and animal participants.

Probiotics are generally recognized as safe (GRAS) because of their long-term use in fermented foods and dairy products [11]. Although the efficacy of probiotics has been studied extensively, the adverse effects of probiotics have been documented. These include sepsis in cardio-surgical patients, anaphylactic reactions, systemic fungemia, and the risk of antibiotic resistance gene transfer to pathogenic bacteria [8]. Hence, the United Nations Food and Agriculture Organization (FAO) and World Health Organization (WHO) have suggested that it is important to perform a minimum safety assessment for potential hemolysis, toxin production, and antibiotic resistance before its use in humans [12].

The mucus layer of the GI tract provides the first contact point between the intestinal microbiota and the host, creating a fluid environment. The GI tract is classified into the lower and upper GI tract, consisting of intestinal epithelial cells (IEC), including paneth cells and goblet cells [13]. Probiotics can regulate IEC function by various ways, including improving microbial colonization, enhancing tight junction (TJ) and mucin production, promoting antimicrobial peptide production, and modulating the immune response of the host. To confer health benefits, probiotics must interact sufficiently with the host by binding to the mucus layer of the GI tract [14–18].

Inflammatory bowel disease (IBD) is a chronic disorder of the GI tract and can be classified into two clinical entities: Crohn's disease (CD) or ulcerative colitis (UC) [19,20]. The pathogenic mechanisms of IBD mainly involve immune cells, including activated dendritic cells (DCs) and macrophages, via the secretion of cytokines, such as IL-1 β and TNF- α [21]. IL-1 β is a proinflammatory cytokine that plays a critical role in a wide range of systemic and local effects. Notably, increased IL-1 β expression in patients with CD and UC is significantly associated with the severity of intestinal inflammation, leading to a defective intestinal epithelial TJ barrier [19,20,22]. Some studies have shown that lipopolysaccharide (LPS)-induced HT-29, with the epithelial morphology of colonic adenocarcinoma cells, secrete Th2 cytokines, including IL-1 β , IL-6, TNF- α , and IL-4, mediated by the NF- κ B and/or MAP kinase pathway [23–25]. However, the inflammatory response in IL-1 β -induced HT-29 via the MAP kinase pathway has yet to be elucidated.

In this study, we evaluated the potential risk of RR-LM1071 isolated from breast milk by testing its hemolytic activity, biogenic amine production, and antibiotic resistance. To propose RR-LM1071 as an effective probiotic for regulating intestinal inflammation, we tested its adhesive properties and anti-inflammatory effects on HT-29 cells.

MATERIALS AND METHODS

Characterization of RR-LM1071

RR-LM1071 (KCCM 12650P) used in this study was isolated from human breast milk of three volunteer mothers, who are living in rural areas in South Korea. The mothers were between 25 and 40 years old, and samples were donated after obtaining their written consent. After isolation, the strain was stored at -80°C in a cryoprotectant mixture of 15% (w/v) skim milk and 10% glycerol until further use. RR-LM1071 was identified using 16S rDNA sequencing (Macrogen, Korea). Finally, the sequencing results were compared against reference sequences from the GenBank database (<http://www.ncbi.nlm.nih.gov/Blastn/>).

Determination of hemolytic activity

For the hemolysis test, RR-LM1071 was grown in MRS broth at 37°C for 18 h, and then streaked on agar plates containing 5% sheep blood. The plates were incubated at 37°C for 24 h. The formation of clear zones around colonies was determined as β -hemolysis. *Escherichia coli* ATCC 25922 was used as a positive control.

Determination of biogenic amine production

According to Bover-Cid and Holzzapfel, RR-LM1071 was cultured in MRS at 37°C for 24 h. Biogenic amine production was determined using a special agar medium with lysine, tyrosine, histamine, and ornithine as the precursors for the synthesis of cadaverine, tyramine, histamine, and putrescine, respectively, at 37°C for 48 h. *E. coli* ATCC 25922 was used as a positive control.

Antibiotic susceptibility

For the antibiotic susceptibility test, RR-LM1071 was cultured at 37°C for 48 h in a broth containing agar IST (90%) and MRS (10%), according to the Clinical and Laboratory Standards Institute (CLSI) recommendations. The minimal inhibitory concentration (MIC) was determined using the agar dilution method. Briefly, a single colony was suspended in phosphate buffered saline (PBS) at an optical density (OD) of 0.01, and inoculated on plates using a multipin-inoculator at 37°C for 24 h. The lowest concentration of antibiotics that suppressed visible growth was denoted as the MIC value, as per European Food Safety Authority (EFSA) recommendations.

Cell culture

HT-29 cells, human colon adenocarcinoma, were purchased from American Type Culture Collection (ATCC). The cells were cultured in RPMI 1640 medium supplemented with 10% fetal bovine serum, 100 U/mL penicillin, and 100 mg/mL streptomycin at 37°C in an atmosphere of 5% CO₂. To evaluate bacterial adhesion, HT-29 monolayers were prepared on 24-well tissue culture plates and seeded with 1 × 10⁵ cells per well. The culture medium was replaced with fresh medium after 24 h.

In vitro adhesion assays

The cultured bacterial cells were diluted in peptone water at 0.1 OD, and the diluted cells (1 mL) were treated on HT-29 cells for 2 h at 37°C in an atmosphere of 5% CO₂. After incubation, the HT-29 cells were washed by PBS to remove unadhered bacteria and treated with 0.25% trypsin-EDTA solution. A bacterial cell count was performed using serially diluted samples via the pour plate method. The diluted samples (1 mL) were placed on a plate before the MRS agar was poured. The results are expressed as a relative percentage of adhesion (CFU adhered bacterial / CFU added bacteria × 100).

Microbial adhesion to solvents

Microbial adhesion to solvents (MATS) was measured according to Kos et al. [26] with some modifications. Briefly, the bacterial cells were cultured in MRS broth for 24 h and harvested by centrifugation at 10,000×g for 2 min. The cell pellets were washed by PBS and diluted approximately to 1.0 × 10⁸ CFU/mL at a final OD of 1.0 ± 0.05 at 600 nm (A₀). The cell suspension was mixed well by vortexing with the same volume of solvent, and then allowed to stand for 30 min at room temperature. The absorbance of the aqueous layer was evaluated at 600 nm (A₁). The percentage of bacterial adhesion to the solvent was calculated as (1 - A₁ / A₀) × 100.

Real-time PCR

To determine the expression of cytokines at the mRNA level, HT-29 cells were seeded at 1 × 10⁶ cells per well in 6-well plates for 24 h. The next day, LGG and RR-LM1071 were incubated at a non-toxic dose (1 × 10⁸ CFU/mL) in the presence of IL-1β (10 ng/mL) for 24 h. Total RNA was extracted using RNAiso plus (TaKaRa, Shiga, Japan) solution, followed by the reverse transcription of 2 µg of total RNA into complementary DNA (cDNA) using PrimeScript™ 1st

strand cDNA synthesis kit (TaKaRa). To amplify cDNA, we used SYBR Green PCRmaster mix (Applied Biosystems, Foster City, CA, USA). The primers used in this study were as follows: IL-6-specific primer pairs consisted of 5'-TCAATGAGGGAGCTTGCCTG-3' (forward), 5'-GATGAGTTGTCATGTCCTGC-3' (reverse); TNF- α -specific primer pairs consisted of 5'-ACAAGCCTGTAGCCCATGTT-3' (forward), 5'-AAAGTAGACCTGCCAGACT-3' (reverse); IL-4-specific primer pairs consisted of 5'-CCCCTCTGTTCTTCTCTGCT-3' (forward), 5'-TCGTCTTTAGCCTTTCCAAG-3' (reverse); the internal control β -actin-specific primer pairs consisted of 5'-ATTGCCGACAGGATGCAGAA-3' (forward), 5'-AAGCATTTGCGGTGGACGAT-3' (reverse). The amplification conditions were as follows: 50 °C for 2 min and 95 °C for 10 min as the hold stage, followed by 95 °C for 15 s and 55 °C for 1 min as the PCR stage with 40 cycles. To analyze the amplified data, the $\Delta\Delta C_t$ method was employed.

Western blotting

HT-29 cells were seeded at 1×10^6 cells per well in 6-well plates for 24 h. After 24 h of incubation, LGG and RR-LM1071 were pre-treated for 1 h followed by IL-1 β (10 ng/mL) stimulation for 1 h. The levels of p44/42 MAP kinase were evaluated using an automated JESS-ProteinSimple instrument, according to the manufacturer's protocol (Minneapolis, MN, USA). Briefly, equal amounts of proteins were mixed with a fluorescence master mix at a ratio of 4:1, and then denatured at 95 °C for 10 min. The prepared protein samples, rabbit anti-p44/42 MAP kinase antibody (Cell Signaling Technology, Danvers, MA, USA), and rabbit anti- α -tubulin antibody (Cell Signaling Technology), as a loading control, were loaded into the pre-filled microplates, and then incubated with HRP-conjugated secondary antibodies. The chemiluminescent signal was determined using a charge-coupled device camera with the luminol-S/peroxide substrate reacted.

Statistical analysis

Data are expressed as the mean \pm SD of triplicate experiments. Mean differences were evaluated by Student's *t*-test or one-way ANOVA followed by tukey's multiple comparison test. $p < 0.05$ was considered statistically significant.

RESULTS AND DISCUSSION

Characterization

We isolated various lactic acid bacteria from human breast milk and denoted them as *Bifidobacterium bifidum* LM1108, *Bifidobacterium bifidum* LM1109, *Lactobacillus gasseri* LM1065, and *Lactobacillus reuteri* LM1071, respectively. Since *L. reuteri* is known for playing a critical role in the production of antimicrobial molecules, the modulation of the host immune system, and the reinforcement of the intestinal barrier [1,7], the *L. reuteri* strain was selected for further analysis. 16S rDNA gene sequence alignment revealed that RR-LM1071 was most closely related to *Lactobacillus reuteri* DSM 20016 (99.87% similarity).

Hemolytic activity

Hemolysis is a process by which red blood cells (RBCs) are destroyed. α -Hemolysis is considered as a partial breakdown of the hemoglobin in RBCs, while β -hemolysis and γ -hemolysis are considered as complete or no breakdown, respectively. Pathogenic bacteria or fungi that cause hemolysis can produce hemolysins that damage the cell membrane of RBCs, leading to sepsis [12]. Hence, it is necessary to evaluate whether probiotics have hemolytic activity. As shown in Table 1, RR-LM1071 showed no hemolytic activity compared to the positive control, *E. coli* ATCC 25922, which showed

β-hemolysis.

Biogenic amines

Biogenic amines are low molecular weight organic nitrogenous compounds formed by the removal of α-carboxyl groups from amino acids, which could induce toxicological events, including headache, hypertension, pyrexia, or heart disease. Thus, determining whether probiotics produce these biogenic amines is one of the critical points in safety [27]. The key biogenic amines are histamine, cadaverine, tyramine, and putrescine, which are synthesized by histidine, lysine, tyrosine, and ornithine, respectively [28,29]. As shown in Table 1, RR-LM1071 was found to be negative for biogenic amine production.

Antibiotic susceptibility

Some studies have indicated that commensal bacteria may store antibiotic resistance genes, as seen in pathogenic bacteria [11]. These bacteria can transfer antibiotic resistance genes to pathogenic bacteria. Therefore, it is necessary to evaluate the antibiotic susceptibility of probiotics [30]. As shown in Table 2, RR-LM1071 was found to be susceptible to ampicillin, erythromycin, gentamicin, tetracycline, streptomycin, vancomycin, chloramphenicol, kanamycin, and clindamycin, as per the EFSA criteria. Therefore, RR-LM1071 does not appear to pose a notable threat that it transfers antibiotic resistance genes to other intestinal bacteria, especially pathogenic bacteria. However, additional studies would be needed to verify whether it has resistance genes, such as through genomic analyses.

Adhesive properties

The GI tract of humans harbors ~14 Log bacteria, consisting of over 1,000 species. Bacterial adhesion to the mucus layer of the GI tract is a critical prerequisite for modulating immune responses and stabilizing the mucosal barrier of the gut. As previously reported, *Lactobacillus rhamnosus* GG (LGG) possesses mucus-binding properties [31,32]. For this reason, LGG is the desired reference for evaluating the adhesive properties of other strains. When we evaluated the adhesive properties of HT-29 cells *in vitro*, the adhesive properties of RR-LM1071 were found to be higher than those of LGG (Fig. 1A). In a previous study, genomic analysis showed that LGG has pilus gene clusters (spaCBA and spaFED), which encode diverse pili, wherein SpaA and SpaD form the pilus

Table 1. Hemolysis and biogenic amine production activity of RR-LM1071 and *E. coli* ATCC 25922

Strain	Hemolysis activity	Biogenic amine			
		Histamine	Cadaverine	Tyramine	Putrescine
RR-LM1071	Gamma	-	-	-	-
<i>E. coli</i> ATCC 25922	Beta	+	+	+	+

E. coli, *Escherichia coli*; +, positive; -, negative.

Table 2. Determination of minimum inhibitory concentration

Strain	Antibiotic resistance test								
	Minimum inhibitory concentration (mg/L) of antibiotics								
	Amp	Ery	Gen	Tet	Str	Van	Chl	Kan	Cli
RR-LM1071	≤ 0.5	≤ 0.25	2	1	≤ 0.25	-	≤ 0.5	≤ 8	≤ 1
EFSA breakpoint	2	1	8	16	64	n.r	4	64	1

Amp, ampicillin; Ery, erythromycin; Gen, gentamicin; Tet, tetracycline; Str, streptomycin; Van, vancomycin; Chl, chloramphenicol; Kan, kanamycin; Cli, clindamycin; n.r, not required; EFSA, European Food Safety Authority.

shaft, SpaB and SpaE adorn the pilus backbone, and SpaC and SpaF serve as adhesive components [31,33]. One limitation of this study is the cell-based analysis used to demonstrate the adhesive properties of RR-LM1071. Future studies should explore whether this is attributed to gene cluster and/or gene expression using genomic, transcriptomic, and proteomic analyses.

Hydrophobicity

The inhibition of pathogens is attributed to the physicochemical properties of the bacterial cell wall, which has adhesive effects. The adhesive properties are affected by various interactions, such as van der Waals forces, Lewis acid-base interactions, and hydrophobic and electrostatic interactions [34,35]. Hydrophobicity is the key to ensuring the first contact between a bacterial cell and mucous or epithelial cells [35,36]. As a result of MATS, RR-LM1071 showed a stronger hydrophobicity than LGG in a hexadecane solvent (Fig. 1B), while there was no differences between the hydrophobicity of the strains in a xylene solvent (data not shown).

The bacterial cell wall includes a thick layer of peptidoglycan, teichoic acid, lipoteichoic acid, surface-exposed proteins, and polysaccharides [26]. The hydrophobicity of probiotics is affected by proteins expressed on the cell surface, such as the Pilin SpaC subunit and MabA. The Pilin SpaC subunit promotes binding to human mucin and IEC. In addition, MabA, an LPXTG cell wall-anchoring protein, helps bacteria adhere to epithelial cells, as well as in biofilm formation [37]. Although the results (Fig. 1) may be ascribed to the rate and amount of cell surface protein expression, further studies will be needed to fully understand the correlation between adhesive properties and hydrophobicity.

Anti-inflammatory effects

LGG is known to have possible benefits in inflammatory diseases, including UC, acute gastroenteritis, and atopic dermatitis [38]. IBD, including CD and UC, is a multifactorial disease that leads to the loss of immune tolerance mediated by various molecules. Cytokines are one of the most important factors in the immune network between immune cells and epithelial cells in the intestine

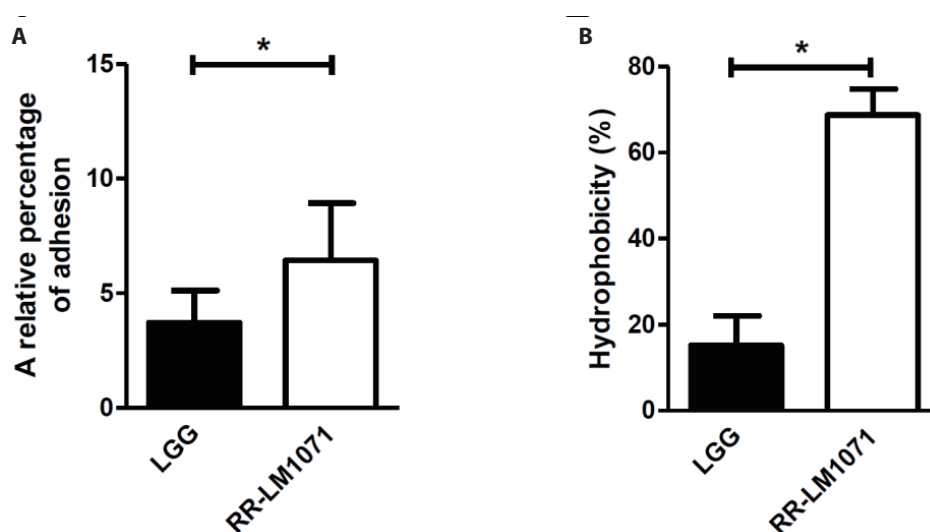


Fig. 1. Adhesive properties of LGG and RR-LM1071 to HT-29 cells. The evaluation of adhesive effects on HT-29 cells (A) and hydrophobicity on a hexadecane solvent (B) was performed as described in Materials and Methods. Data are mean values from three experiments. Each bar represents the mean value \pm SD ($p < 0.05$). LGG, *Lactobacillus rhamnosus* GG.

[39,40]. Activated macrophages are a major contributor to the production of cytokines, including IL-1 β and TNF- α . IL-1 β is a proinflammatory mediator that plays a central role in intestinal inflammation in the gut [21]. In this context, we tested whether a non-toxic concentration (1×10^8 CFU/mL) of RR-LM1071, determined by the WST assay (data not shown), could regulate the expression of cytokines in IL-1 β -induced HT-29 cells. Using real-time PCR analysis, RR-LM1071 was found to highly suppress the mRNA expression of IL-6, TNF- α , and IL-4 in IL-1 β -induced HT-29 cells (Fig. 2). Furthermore, RR-LM1071 significantly inhibited the IL-1 β -induced phosphorylation of p44/42 MAP kinase (Fig. 3). These results suggest that RR-LM1071 may inhibit IL-1 β -induced cytokine expression via the MAP kinase pathway in HT-29 cells.

Unexpectedly, the mRNA expression of IL-6 by RR-LM1071 was found to be significantly reduced compared to LGG. However, both TNF- α and IL-4 production did not show any statistical differences compared to LGG. IL-6 is a pleiotropic cytokine that leads to the development of IBD by means of its soluble IL-6 receptor (sIL-6R). IL-6 and sIL-6R levels are known to be correlated

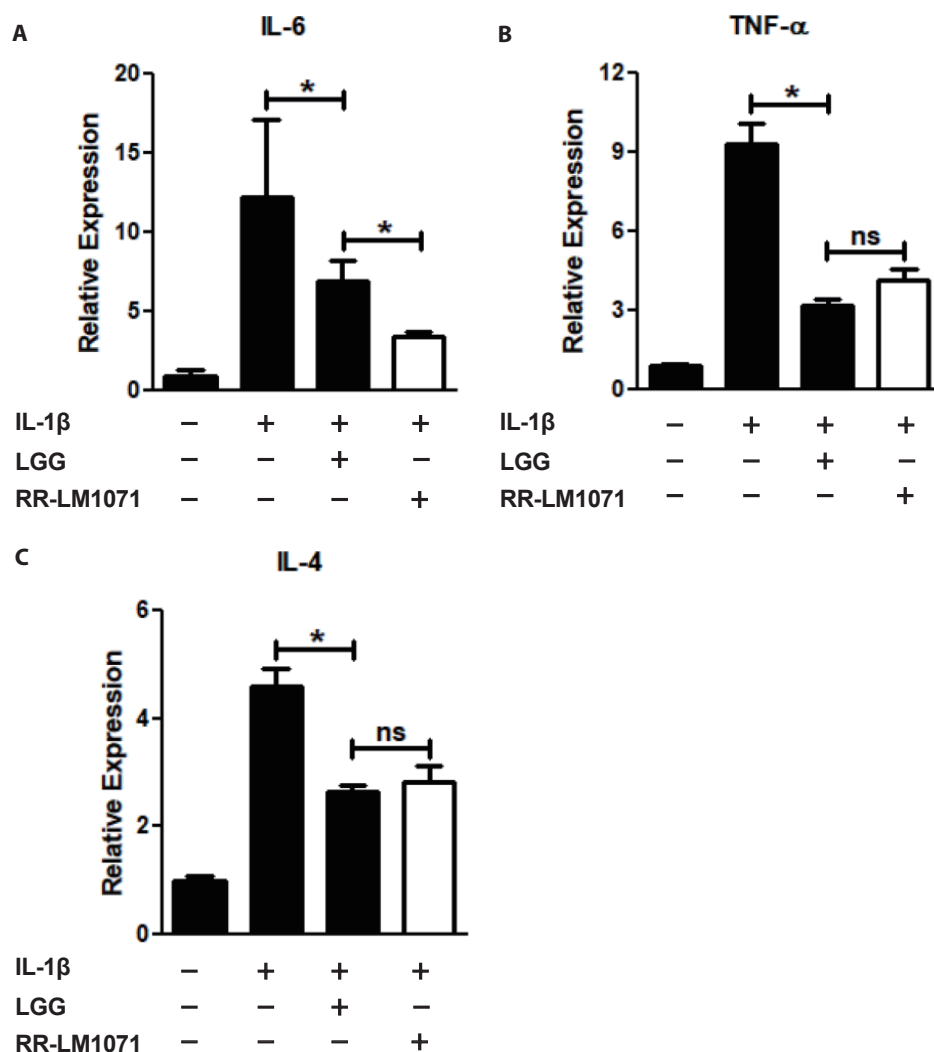


Fig. 2. Anti-inflammatory effects of LGG and RR-LM1071 in IL-1 β -induced HT-29 cells. The expression levels of IL-6 (A), TNF- α (B) and IL-4 (C) were determined by Realtime PCR as described in Materials and Methods. β -actin was used as an endogenous control. Data are mean values from three experiments. Each bar represents the mean value \pm SD ($p < 0.05$). IL, interleukin; LGG, *Lactobacillus rhamnosus* GG; TNF, tumor necrosis factor; NS, not significant.

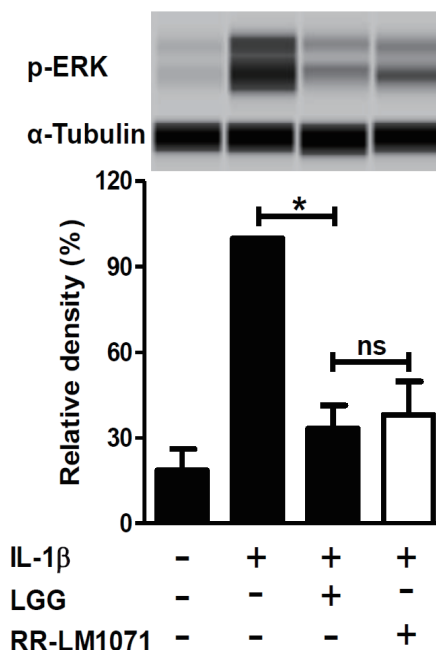


Fig. 3. p44/42 MAP kinase inhibition of LGG and RR-LM1071 in IL-1 β -induced HT-29 cells. The expression levels of p44/42 MAP kinase and α -tubulin were determined by automated JESS-ProteinSimple instrument. Each bar was expressed by area values of JESS, after normalized by α -tubulin. Data are mean values from three experiments. Each bar represents the mean value \pm SD (* p < 0.05). NS, not significant; IL, interleukin; LGG, *Lactobacillus rhamnosus* GG.

with the pathogenesis of UC and DC [41–43]. Therefore, our findings suggest that RR-LM1071 could be a better choice than LGG for preventing IBD.

Although the findings presented in this study point to the involvement of MAP kinase activation, which is responsible for the activation of inflammatory genes, future studies will need to confirm whether RR-LM1071 specifically regulates the pathway in HT-29 cells, as well as evaluate whether other pathways, such as the NF- κ B pathway mediated by IL-1 β , are involved.

CONCLUSION

In this study, the safety of RR-LM 1071 isolated from human breast milk was demonstrated by evaluating its hemolytic activity, biogenic amine production, and antibiotic resistance. In addition, RR-LM1071 was found to have more affinity for HT-29 cells compared to LGG in adhesive tests. Under inflammatory conditions induced by IL-1 β in HT-29 cells, RR-LM1071 suppressed the expression of inflammatory cytokines, namely IL-6, TNF- α , and IL-4, via the MAP kinase pathway. Collectively, our results demonstrate that RR-LM1071 would be an effective and safe probiotic in humans, thus making the case for its use in the development of health supplements and therapeutic treatments for IBD.

REFERENCES

1. Bene KP, Kavanaugh DW, Leclaire C, Gunning AP, MacKenzie DA, Wittmann A, et al. *Lactobacillus reuteri* surface mucus adhesins upregulate inflammatory responses through interactions with innate C-type lectin receptors. *Front Microbiol.* 2017;8:321. <https://doi.org/10.3389/fmicb.2017.01321>.

- org/10.3389/fmicb.2017.00321
2. Dethlefsen L, McFall-Ngai M, Relman DA. An ecological and evolutionary perspective on human-microbe mutualism and disease. *Nature*. 2007;449:811-8. <https://doi.org/10.1038/nature06245>
 3. Qin J, Li R, Raes J, Arumugam M, Burgdorf KS, Manichanh C, et al. A human gut microbial gene catalogue established by metagenomic sequencing. *Nature*. 2010;464:59-65. <https://doi.org/10.1038/nature08821>
 4. Rajilić-Stojanović M, de Vos WM. The first 1000 cultured species of the human gastrointestinal microbiota. *FEMS Microbiol Rev*. 2014;38:996-1047. <https://doi.org/10.1111/1574-6976.12075>
 5. Moran NA. Symbiosis. *Curr Biol*. 2006;16:R866-71. <https://doi.org/10.1016/j.cub.2006.09.019>
 6. Walter J, Britton RA, Roos S. Host-microbial symbiosis in the vertebrate gastrointestinal tract and the *Lactobacillus reuteri* paradigm. *Proc Natl Acad Sci USA*. 2011;108 Suppl 1:4645-52. <https://doi.org/10.1073/pnas.1000099107>
 7. Mu Q, Tavella VJ, Luo XM. Role of *Lactobacillus reuteri* in human health and diseases. *Front Microbiol*. 2018;9:757. <https://doi.org/10.3389/fmicb.2018.00757>
 8. Sotoudegan F, Daniali M, Hassani S, Nikfar S, Abdollahi M. Reappraisal of probiotics' safety in human. *Food Chem Toxicol*. 2019;129:22-9. <https://doi.org/10.1016/j.fct.2019.04.032>
 9. LeBlanc JG, Chain F, Martín R, Bermúdez-Humarán LG, Courau S, Langella P. Beneficial effects on host energy metabolism of short-chain fatty acids and vitamins produced by commensal and probiotic bacteria. *Microb Cell Factories*. 2017;16:79. <https://doi.org/10.1186/s12934-017-0691-z>
 10. Ríos-Covián D, Ruas-Madiedo P, Margolles A, Gueimonde M, de Los Reyes-Gavilán CG, Salazar N. Intestinal short chain fatty acids and their link with diet and human health. *Front Microbiol*. 2016;7:185. <https://doi.org/10.3389/fmicb.2016.00185>
 11. Mathur S, Singh R. Antibiotic resistance in food lactic acid bacteria: a review. *Int J Food Microbiol*. 2005;105:281-95.
 12. Kang MS, Yeu JE, Hong SP. Safety Evaluation of oral care probiotics *Weissella cibaria* CMU and CMS1 by phenotypic and genotypic analysis. *Int J Mol Sci*. 2019;20:2693. <https://doi.org/10.3390/ijms20112693>
 13. Nishiyama K, Sugiyama M, Mukai T. Adhesion properties of lactic acid bacteria on intestinal mucin. *Microorganisms*. 2016;4:34. <https://doi.org/10.3390/microorganisms4030034>
 14. Walter J. Ecological role of lactobacilli in the gastrointestinal tract: implications for fundamental and biomedical research. *Appl Environ Microbiol*. 2008;74:4985-96. <https://doi.org/10.1128/AEM.00753-08>
 15. Lebeer S, Vanderleyden J, De Keersmaecker SC. Genes and molecules of lactobacilli supporting probiotic action. *Microbiol Mol Biol Rev*. 2008;72:728-64. <https://doi.org/10.1128/MMBR.00017-08>
 16. Vastano V, Pagano A, Fusco A, Merola G, Sacco M, Donnarumma G. The *Lactobacillus plantarum* Eno A1 Enolase is involved in immunostimulation of Caco-2 cells and in biofilm development. *Adv Exp Med Biol*. 2016;897:33-44.
 17. Zyrek AA, Cichon C, Helms S, Enders C, Sonnenborn U, Schmidt MA. Molecular mechanisms underlying the probiotic effects of *Escherichia coli* nissle 1917 involve ZO-2 and PKC ζ redistribution resulting in tight junction and epithelial barrier repair. *Cell Microbiol*. 2007;9:804-16. <https://doi.org/10.1111/j.1462-5822.2006.00836.x>
 18. Schlee M, Harder J, Köten B, Stange EF, Wehkamp J, Fellermann K. Probiotic lactobacilli and VSL#3 induce enterocyte β -defensin 2. *Clin Exp Immunol*. 2008;151:528-35. <https://doi.org/>

- 10.1111%2Fj.1365-2249.2007.03587.x
19. Al-Sadi RM, Ma TY. IL-1 β causes an increase in intestinal epithelial tight junction permeability. *J Immunol.* 2007;178:4641-9. <https://doi.org/10.4049/jimmunol.178.7.4641>
 20. Al-Sadi R, Guo S, Ye D, Dokladny K, Alhmoud T, Ereifej L, et al. Mechanism of IL-1 β modulation of intestinal epithelial barrier involves p38 kinase and activating transcription factor-2 activation. *J Immunol.* 2013;190:6596-606. <https://doi.org/10.4049/jimmunol.1201876>
 21. Steinbach EC, Plevy SE. The role of macrophages and dendritic cells in the initiation of inflammation in IBD. *Inflamm Bowel Dis.* 2014;20:166-75. <https://doi.org/10.1097/MIB.0b013e3182a69dca>
 22. Cominelli F, Pizarro TT. Interleukin-1 and interleukin-1 receptor antagonist in inflammatory bowel disease. *Aliment Pharmacol Ther.* 1996;10 Suppl 2:49-53. <https://doi.org/10.1046/j.1365-2036.1996.22164020.x>
 23. Lee J, Hwang KT, Park KY. Adhesion of lactic acid bacteria can modulate the secretion of cytokines on HT-29 colon adenocarcinoma cells. *J Korean Assoc Cancer Prev.* 2004;9:36-41.
 24. Gross V, Andus T, Daig R, Aschenbrenner E, Schölmerich J, Falk W. Regulation of interleukin-8 production in a human colon epithelial cell line (HT-29). *Gastroenterology.* 1995;108:653-61. [https://doi.org/10.1016/0016-5085\(95\)90436-0](https://doi.org/10.1016/0016-5085(95)90436-0)
 25. Moon DO, Jin CY, Lee JD, Choi YH, Ahn SC, Lee CM, et al. Curcumin decreases binding of Shiga-like toxin-1B on human intestinal epithelial cell line HT29 stimulated with TNF- α and IL-1 β : suppression of p38, JNK and NF- κ B p65 as potential targets. *Biol Pharm Bull.* 2006;29:1470-5. <https://doi.org/10.1248/bpb.29.1470>
 26. Kos B, Šušković J, Vuković S, Šimpraga M, Frece J, Matošić S. Adhesion and aggregation ability of probiotic strain *Lactobacillus acidophilus* M92. *J Appl Microbiol.* 2003;94:981-7. <https://doi.org/10.1046/j.1365-2672.2003.01915.x>
 27. Silla Santos MH. Biogenic amines: their importance in foods. *Int J Food Microbiol.* 1996;29:213-31. [https://doi.org/10.1016/0168-1605\(95\)00032-1](https://doi.org/10.1016/0168-1605(95)00032-1)
 28. Ladero V, Fernández M, Calles-Enríquez M, Sánchez-Llana E, Cañedo E, Martín MC, et al. Is the production of the biogenic amines tyramine and putrescine a species-level trait in enterococci? *Food Microbiol.* 2012;30:132-8. <https://doi.org/10.1016/j.fm.2011.12.016>
 29. Gezginc Y, Akyol I, Kuley E, Özogul F. Biogenic amines formation in *Streptococcus thermophilus* isolated from home-made natural yogurt. *Food Chem.* 2013;138:655-62. <https://doi.org/10.1016/j.foodchem.2012.10.138>
 30. [FEEDAP] EFSA panel on additives and products or substances used in animal feed. Guidance on the assessment of bacterial susceptibility to antimicrobials of human and veterinary importance. *EFSA J.* 2012;10:2740. <https://doi.org/10.2903/j.efsa.2012.2740>
 31. Reunanen J, von Ossowski I, Hendrickx AP, Palva A, de Vos WM. Characterization of the SpaCBA pilus fibers in the probiotic *Lactobacillus rhamnosus* GG. *Appl Environ Microbiol.* 2012;78:2337-44. <https://doi.org/10.1128/AEM.07047-11>
 32. Bang M, Yong CC, Ko HJ, Choi IG, Oh S. Transcriptional response and enhanced intestinal adhesion ability of *Lactobacillus rhamnosus* GG after acid stress. *J Microbiol Biotechnol.* 2018;28:1604-13. <https://doi.org/10.4014/jmb.1807.07033>
 33. Kankainen M, Paulin L, Tynkkynen S, von Ossowski I, Reunanen J, Partanen P, et al. Comparative genomic analysis of *Lactobacillus rhamnosus* GG reveals pili containing a human-mucus binding protein. *Proc Natl Acad Sci USA.* 2009;106:17193-8. <https://doi.org/10.1073/pnas.0908876106>
 34. Polak-Berecka M, Waśko A, Paduch R, Skrzypek T, Sroka-Bartnicka A. The effect of cell surface components on adhesion ability of *Lactobacillus rhamnosus*. *Antonie van Leeuwenhoek.*

- 2014;106:751-62. <https://doi.org/10.1007/s10482-014-0245-x>
35. Giaouris E, Chapot-Chartier MP, Briandet R. Surface physicochemical analysis of natural *Lactococcus lactis* strains reveals the existence of hydrophobic and low charged strains with altered adhesive properties. *Int J Food Microbiol.* 2009;131:2-9. <https://doi.org/10.1016/j.ijfood-micro.2008.09.006>
 36. Del Re B, Sgorbati B, Miglioli M, Palenzona D. Adhesion, autoaggregation and hydrophobicity of 13 strains of *Bifidobacterium longum*. *Lett Appl Microbiol.* 2000;31:438-42. <https://doi.org/10.1046/j.1365-2672.2000.00845.x>
 37. Nishiyama K, Nakamata K, Ueno S, Terao A, Aryantini NP, Sujaya IN, et al. Adhesion properties of *Lactobacillus rhamnosus* mucus-binding factor to mucin and extracellular matrix proteins. *Biosci Biotechnol Biochem.* 2015;79:271-9. <https://doi.org/10.1080/09168451.2014.972325>
 38. de Vroome T, Martinovic B, Verkuyten M. The integration paradox: level of education and immigrants' attitudes towards natives and the host society. *Cultur Divers Ethnic Minor Psychol.* 2014;20:166-75. <https://doi.org/10.1037/a0034946>
 39. Sanchez-Muñoz F, Dominguez-Lopez A, Yamamoto-Furusho JK. Role of cytokines in inflammatory bowel disease. *World J Gastroenterol.* 2008;14:4280-8. <https://doi.org/10.3748/wjg.14.4280>
 40. Friedrich M, Pohin M, Powrie F. Cytokine networks in the pathophysiology of inflammatory bowel disease. *Immunity.* 2019;50:992-1006. <https://doi.org/10.1016/j.immuni.2019.03.017>
 41. Mitsuyama K, Toyonaga A, Sasaki E, Ishida O, Ikeda H, Tsuruta O, et al. Soluble interleukin-6 receptors in inflammatory bowel disease: relation to circulating interleukin-6. *Gut.* 1995;36:45-9. <https://doi.org/10.1136/gut.36.1.45>
 42. Reinisch W, Gasché C, Tillinger W, Wyatt J, Lichtenberger C, Willheim M, et al. Clinical relevance of serum interleukin-6 in Crohn's disease: single point measurements, therapy monitoring, and prediction of clinical relapse. *Am J Gastroenterol.* 1999;94:2156-64. [https://doi.org/10.1016/S0002-9270\(99\)00344-5](https://doi.org/10.1016/S0002-9270(99)00344-5)
 43. Van Kemseke C, Belaiche J, Louis E. Frequently relapsing Crohn's disease is characterized by persistent elevation in interleukin-6 and soluble interleukin-2 receptor serum levels during remission. *Int J Colorectal Dis.* 2000;15:206-10. <https://doi.org/10.1007/s003840000226>