



# Fully Automatic Segmentation of Acute Ischemic Lesions on Diffusion-Weighted Imaging Using Convolutional Neural Networks: Comparison with Conventional Algorithms

Ilsang Woo, MS<sup>1\*</sup>, Areum Lee, MS<sup>1\*</sup>, Seung Chai Jung, MD, PhD<sup>2</sup>, Hyunna Lee, PhD<sup>1</sup>, Namkug Kim, PhD<sup>1</sup>, Se Jin Cho, MD<sup>2</sup>, Donghyun Kim, MD<sup>2</sup>, Jungbin Lee, MD<sup>2</sup>, Leonard Sunwoo, MD, PhD<sup>3</sup>, Dong-Wha Kang, MD, PhD<sup>4</sup>

<sup>1</sup>Department of Convergence Medicine, Biomedical Engineering Research Center, University of Ulsan College of Medicine, Asan Medical Center, Seoul, Korea; <sup>2</sup>Department of Radiology and Research Institute of Radiology, University of Ulsan College of Medicine, Asan Medical Center, Seoul, Korea; <sup>3</sup>Department of Radiology, Seoul National University Bundang Hospital, Seongnam, Korea; <sup>4</sup>Department of Neurology, University of Ulsan College of Medicine, Asan Medical Center, Seoul, Korea

**Objective:** To develop algorithms using convolutional neural networks (CNNs) for automatic segmentation of acute ischemic lesions on diffusion-weighted imaging (DWI) and compare them with conventional algorithms, including a thresholding-based segmentation.

**Materials and Methods:** Between September 2005 and August 2015, 429 patients presenting with acute cerebral ischemia (training:validation:test set = 246:89:94) were retrospectively enrolled in this study, which was performed under Institutional Review Board approval. Ground truth segmentations for acute ischemic lesions on DWI were manually drawn under the consensus of two expert radiologists. CNN algorithms were developed using two-dimensional U-Net with squeeze-and-excitation blocks (U-Net) and a DenseNet with squeeze-and-excitation blocks (DenseNet) with squeeze-and-excitation operations for automatic segmentation of acute ischemic lesions on DWI. The CNN algorithms were compared with conventional algorithms based on DWI and the apparent diffusion coefficient (ADC) signal intensity. The performances of the algorithms were assessed using the Dice index with 5-fold cross-validation. The Dice indices were analyzed according to infarct volumes (< 10 mL, ≥ 10 mL), number of infarcts (≤ 5, 6–10, ≥ 11), and b-value of 1000 (b1000) signal intensities (< 50, 50–100, > 100), time intervals to DWI, and DWI protocols.

**Results:** The CNN algorithms were significantly superior to conventional algorithms ( $p < 0.001$ ). Dice indices for the CNN algorithms were 0.85 for U-Net and DenseNet and 0.86 for an ensemble of U-Net and DenseNet, while the indices were 0.58 for ADC-b1000 and b1000-ADC and 0.52 for the commercial ADC algorithm. The Dice indices for small and large lesions, respectively, were 0.81 and 0.88 with U-Net, 0.80 and 0.88 with DenseNet, and 0.82 and 0.89 with the ensemble of U-Net and DenseNet. The CNN algorithms showed significant differences in Dice indices according to infarct volumes ( $p < 0.001$ ).

**Conclusion:** The CNN algorithm for automatic segmentation of acute ischemic lesions on DWI achieved Dice indices greater than or equal to 0.85 and showed superior performance to conventional algorithms.

**Keywords:** Diffusion-weighted imaging; Cerebral ischemia; Segmentation; Convolutional neural networks

Received September 5, 2018; accepted after revision March 16, 2019.

This study was supported by a grant (2018-719) from the Asan Institute for Life Sciences, Asan Medical Center, Seoul, Korea.

\*These authors contributed equally to this work.

**Corresponding author:** Seung Chai Jung, MD, PhD, Department of Radiology and Research Institute of Radiology, University of Ulsan College of Medicine, Asan Medical Center, 88 Olympic-ro 43-gil, Songpa-gu, Seoul 05505, Korea.

• Tel: (822) 3010-3949 • Fax: (822) 476-4719 • E-mail: dynamics79@gmail.com

This is an Open Access article distributed under the terms of the Creative Commons Attribution Non-Commercial License (<https://creativecommons.org/licenses/by-nc/4.0>) which permits unrestricted non-commercial use, distribution, and reproduction in any medium, provided the original work is properly cited.

## INTRODUCTION

Diffusion-weighted imaging (DWI) of acute cerebral ischemia can indicate the infarct core, which strongly correlates with the final infarct volume (1, 2). Accurate segmentation of acute ischemic lesions on DWI is crucial for evaluating patients and guiding treatment options. However, the performance of the currently available automated segmentation methods remains insufficient relative to manual segmentation by experts, which is still considered the ground truth, even though automatic segmentations have been repeatedly tried (3-13). Previously developed automated segmentation methods have generally shown lower accuracy than the ground truth methods, and in cases where these methods had higher accuracy, the validation was only performed on small datasets (9, 11, 12). High signal intensity on DWI images with a b-value of 1000 (b1000) and low signal intensity on apparent diffusion coefficient (ADC) maps are well-known features representing acute infarction (14, 15). However, automatic segmentation based on thresholding of signal intensities seems to have limitations, since the signal intensities change over time in acute infarction and also vary across different magnetic resonance machines (2, 16). Therefore, manual segmentation still plays an important role as the reference standard for definition of the maximal visual extent of high signal intensities on b1000 images, with the ADC images serving as a reference to avoid regions of T2 shine-through artifacts (3, 17).

A deep learning algorithm using convolutional neural networks (CNNs) was recently introduced and applied to the segmentation of acute cerebral ischemia (3). The results from this deep learning algorithm were higher than those achieved with previous methods such as ADC thresholding and conventional machine learning. Using 741 subjects, Chen et al. (3) showed a mean accuracy of 0.67 (for the Dice coefficient), achieving accuracy values of 0.83 in larger lesions. The CNN simulates the organization of the animal visual cortex, which consists of multiple layers of neuron-like computational connections with minimal step-by-step processing, and deep learning algorithms with CNNs are suitable for classifying images in a large image repository (18). Deep learning using a CNN may be a promising method for the automatic segmentation of acute cerebral ischemia, showing the advantages and characteristics of end-to-end training and feature learning that automatically and adaptively enable the learning of hierarchical representations

of patterns from low- to high-level features because acute cerebral ischemic lesions are often non-dominant and multiple with indistinct boundaries, and co-exist with other artifacts in images (3, 18).

Therefore, we hypothesized that a deep learning algorithm using CNN could achieve higher performance than conventional methods in the automatic segmentation of acute cerebral ischemic lesions, and in this study, we intended to develop a deep learning algorithm using CNNs to segment such lesions on DWI and to compare our CNN-based method with conventional methods using thresholding-based segmentation, and with a widely used commercial algorithm.

## MATERIALS AND METHODS

### Study Population

This retrospective study was approved by our Institutional Review Board, which waived the requirement for informed consent. A total of 429 patients (men:women, 269:160; mean age, 72 years; age range, 24–98 years) who were registered on our stroke registry between September 2005 and August 2015 were retrospectively enrolled. These patients on the registry visited the emergency room because of symptoms of acute ischemic stroke and underwent magnetic resonance imaging (MRI) including DWI for hyperacute to acute infarction.

The demographic and clinical data of the patients were collected, including age, sex, body mass index, hypertension, diabetes mellitus, hyperlipidemia, obesity, alcohol and smoking history, activity and family history of stroke, and past medical history such as heart disease, history of stroke, and National Institutes of Health Stroke Scale rating (Table 1).

### Imaging Acquisition

MRI was performed with various machines, including 1.5T (Magnetom Avanto, Siemens Healthineers, Erlangen, Germany; Genesis Signa, GE Healthcare, Milwaukee, WI, USA; Intera, Philips Healthcare, Best, Netherlands) and 3T scanners (Ingenia CX, Philips Healthcare; Achieva, Philips Healthcare). The parameters for the DWI sequences included the following: repetition time, 3000–8000 ms; echo time, 56–103 ms; flip angle, 90°; matrix, 256 x 256–512 x 512; FOV, 220 x 220–250 x 250 mm; number of excitations, 1–6; number of slices, 20–45; and slice thickness, 3–5 mm; b-value, 1000 s/mm<sup>2</sup>.

**CNN Algorithm**

The CNN algorithm was constructed by adding squeeze-and-excitation blocks to two-dimensional (2D) U-Net with squeeze-and-excitation blocks (U-Net) and 2D DenseNet with squeeze-and-excitation blocks (DenseNet) architectures (19). U-Net and DenseNet are well-known CNN algorithms in the semantic segmentation of medical images (20, 21). The squeeze-and-excitation blocks capture dynamic and non-linear channel relationships using squeeze-and-excitation operations (22). The squeeze operation generates channel-wise descriptors that use global average pooling to represent the global information of each channel in feature maps. The excitation operations consist of fully connected layers and a rectified linear unit (23). The squeeze-and-excitation blocks were added to skip connections and dense blocks in U-Net and DenseNet, respectively. In the encoder-decoder model, all three types of blocks (encoder, bottleneck, decoder) were followed by a squeeze-and-excitation block (19). Finally, a U-Net with squeeze-and-excitation blocks (U-Net), a DenseNet with squeeze-and-excitation blocks (DenseNet), and an ensemble of U-Net and DenseNet with squeeze-and-excitation blocks (ensemble

of U-Net and DenseNet) were constructed for semantic segmentation of acute ischemic lesions (Fig. 1). Linear intensity normalization was performed to generate arbitrary signal intensity values in standardized intensity ranges from b1000 images (24) before the deep learning performed using the CNN algorithm.

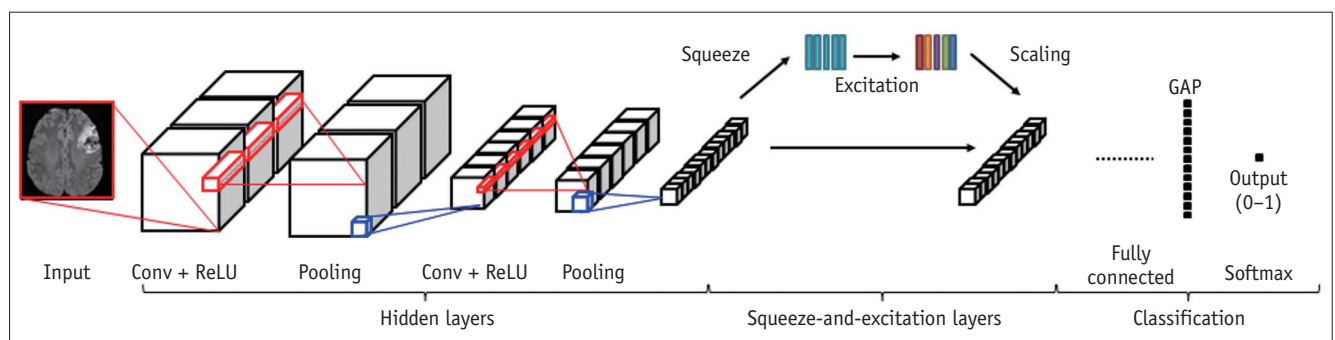
**Image Analysis and Processing**

Two experienced neuroradiologists with 5 years and 8 years of experience, respectively, working in consensus manually drew regions of interest (ROIs) for acute ischemic lesions on DWI. The ROIs were drawn on whole DWI slices, based on the maximal visual extent of high signal intensities on the b1000 images, with the ADC images serving as reference to avoid regions of T2 shine-through artifact. These ROIs formed the ground truth data (17). These ground truth masks were accomplished using in-house software running under ImageJ. Two DWIs for the ground truth and algorithm masks were co-registered with non-rigid methods in each individual subject. The Dice indices were calculated between the ROIs from the ground truth and algorithms based on the following formula:

**Table 1. Patient Characteristics**

Variables	Training Set	Validation Set	Test Set
Mean age (range, years)	69.5 (24–97)	75.4 (50–98)	75.5 (50–96)
Male:female	166:80	50:39	53:41
Past medical history (%)			
Hypertension	124 (50.4)	50 (56.2)	58 (61.7)
Diabetes mellitus	51 (20.7)	20 (22.5)	35 (37.2)
Hyperlipidemia	33 (13.4)	16 (18.0)	24 (25.5)
Smoking	128 (52.0)	36 (40.4)	36 (38.3)
Family history of stroke	62 (25.2)	17 (19.1)	13 (13.8)
Body mass index	24.0 ± 3.0	24.0 ± 3.5	23.3 ± 3.1
Number of vascular risk factors	2.4 (0–6)	2.5 (0–5)	2.7 (0–5)
Time interval to DWI (days)*	1.0 (0–11)	0.8 (0–4)	0.7 (0–5)

\*There were no significant differences in time intervals to DWI among three sets ( $p > 0.05$ ). DWI = diffusion-weighted imaging



**Fig. 1. CNN algorithm architecture.** CNN = convolutional neural network, Conv = convolutional layer, GAP = global average pooling, ReLU = rectified linear unit

$$\text{Dice}(X, Y) = \frac{2|X \cap Y|}{|X| + |Y|}$$

### Deep Learning and Statistical Analysis

The datasets were divided into training ( $n = 246$ ), validation ( $n = 89$ ), and test ( $n = 94$ ) sets based on random sampling. The Dice index (as an overlapping index) was used for evaluation of the algorithms. The CNN algorithms were trained and developed using the training and validation sets. The algorithms (U-Net, DenseNet, and an ensemble of U-Net and DenseNet) were then tested with the separate test set (processing time, 12 s per imaging slice), and the results were compared with those of two in-house thresholding algorithms and a commercial ADC thresholding algorithm (OleaSphere, Olea Medical, La Ciotat, France). The first in-house thresholding algorithm, referred to here as ADC-b1000, automatically segments acute ischemic lesions using ADC thresholds, and then adjusts them according to the b1000 signal intensity. The second in-house thresholding algorithm (b1000-ADC) automatically segments acute ischemic lesions according to b1000 signal intensity thresholds, and then adjusts them according to the ADC map. In the segmentation using b1000 signal intensities, we computed the global mean and standard deviation (SD) (i.e.,  $\mu_{WM}$  and  $SD_{WM}$ ) for b1000 intensities of every voxel within the normal white matter (WM) regions. We performed a three-dimensional connected component analysis and computed the mean b1000 value for each infarct component. Then, we determined the component having a mean b1000 value greater than or equal to the threshold value  $T$  ( $T = \mu_{WM} + 1.5 \times SD_{WM}$ ). Normalized absolute thresholding was applied to the segmentation using ADC values. For a given ADC map of each subject, we first constructed a quantile curve of ADC intensities within the brain mask. From the quantile-intensity curve, we found an intersection point between two tangent lines with maximum and minimum differential coefficients. The ADC maps were normalized by dividing the intensities on the ADC map by the intensity at the intersection point. Next, the normalized ADC map was thresholded using the optimal absolute threshold value of 0.835. The comparisons with the commercial ADC algorithm were performed using only 75 patients from the test set (from the test set of  $n = 94$ ) due to segmentation failure using the commercial ADC algorithm. Paired  $t$  tests were used to compare the Dice indices from the CNN and conventional algorithms according to infarct volumes and numbers, b1000 signal intensities,

time intervals to DWI, and DWI protocols. Permutation tests and 5-fold cross-validation were also performed in the entire sets, including training, validation, and test sets. The infarct volumes in the test set were divided into two groups: small lesions  $< 10$  mL, and large lesions  $\geq 10$  mL. The number of infarcts (determined as the multiplicity parameter) in each subject was analyzed according to connected component labeling, with three classes being defined ( $\leq 5$ ;  $6-10$ ;  $\geq 11$ ). The b1000 signal intensities were divided into three groups ( $< 50$ ;  $50-100$ ;  $> 100$ ). The time intervals to DWI were divided into three groups ( $< 6$  hours;  $6-24$  hours;  $> 24$  hours from the symptom onset). The correlation coefficients ( $r$ ) between the infarct volume defined by each algorithm and the ground truth values were also calculated. All statistical analyses were performed using the statistical software packages MedCalc for Windows (version 15.0, MedCalc Software, Ostend, Belgium) and SPSS (version 20.0, IBM Corp., Armonk, NY, USA). Two-sided  $p$  values less than 0.05 were considered to indicate statistical significance.

## RESULTS

### Performance of the CNN Algorithm for Segmentation of Acute Cerebral Ischemia

The segmentation performances are presented in Table 2. The Dice indices show a plateau from the 70th cumulative percentile ( $n = 172$ ) (Fig. 2). Representative cases are presented in Figures 3 and 4. The Dice indices were as follows: U-Net, 0.85; DenseNet, 0.85; ensemble of U-Net and DenseNet, 0.86. The Dice indices for small and large lesions, respectively, were 0.81 and 0.88 with U-Net, 0.80 and 0.88 with DenseNet, and 0.82 and 0.89 with the ensemble of U-Net and DenseNet. There were no significant differences ( $p > 0.05$ ) in the Dice indices of the CNN algorithms in relation to the multiplicity of infarcts, the b1000 signal intensities, the time intervals to DWI, and DWI protocols. However, there were significant differences ( $p < 0.01$ ) in the Dice indices of the CNN algorithms between small and large lesions (Fig. 5).

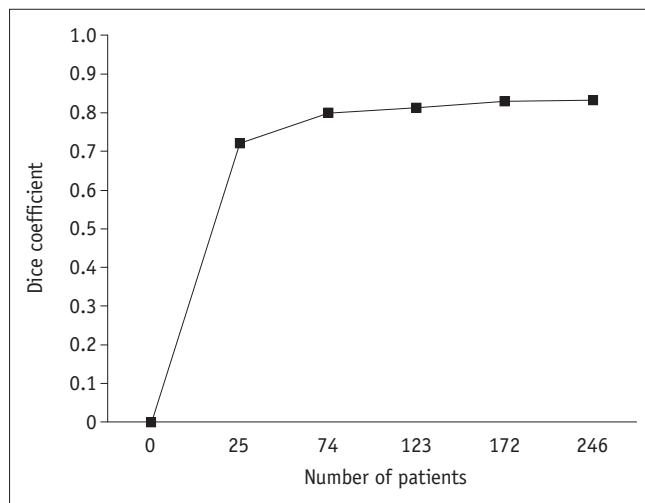
### Performance Comparisons between CNNs and Conventional Algorithms

The Dice indices for the conventional methods were as follows: ADC-b1000, 0.58; b1000-ADC, 0.58; commercial algorithm, 0.52. The CNN algorithms were superior to the ADC-b1000, b1000-ADC, and the commercial algorithm

**Table 2. Performances of Algorithms**

Algorithm	Performance							
	Averaged Dice Index*	Pooled Dice Index (Variance)*	CNN vs. Conventional Algorithms <sup>†</sup>	Small vs. Large Infarct Volume	Multiplicity of Infarcts	b1000 Signal Intensity of Infarcts	Time Interval to DWI	MR Machines or Protocols
U-Net with SE <sup>‡</sup>	0.8515	0.8216 (0.0098)	0.001	0.001	0.154	0.593	0.062	0.332
DenseNet with SE <sup>‡</sup>	0.8479	0.8089 (0.0122)	0.001	0.001	0.215	0.606	0.180	0.539
Ensemble of U-Net and DenseNet <sup>‡</sup>	0.8581	0.8219 (0.0054)	0.001	0.001	0.170	0.684	0.158	0.110
ADC-b1000	0.5786	0.5985 (0.0304)		0.001	0.263	0.049	0.019	0.561
b1000-ADC	0.5830	0.6005 (0.0259)		0.134	0.130	0.091	0.003	0.204
Commercial ADC	0.5185	0.5614 (0.0301)		0.001	0.783	0.011	0.303	0.237

\*Averaged Dice index was calculated in test set and pooled Dice index was calculated in training, validation, and test sets, <sup>†</sup>CNN algorithms were compared with ADC-b1000, b1000-ADC, and commercial ADC algorithms in terms of Dice indices. *p* values from comparisons showed statistical significances both for averaged and pooled values, <sup>‡</sup>There were no significant differences in Dice indices among three CNN algorithms (*p* > 0.05). ADC = apparent diffusion coefficient, b1000 = b-value of 1000, CNN = convolutional neural network, DenseNet = DenseNet with squeeze-and-excitation blocks, MR = magnetic resonance, SE = squeeze-and-excitation blocks, U-Net = U-Net with squeeze-and-excitation blocks



**Fig. 2. Averaged performances of CNN algorithms for segmentation according to number of cases with cerebral acute ischemia.**

(*p* = 0.001). The Dice indices for small and large lesions, respectively, were 0.50 and 0.63 with ADC-b1000, 0.54 and 0.61 with b1000-ADC, and 0.41 and 0.58 with the commercial algorithm. There were significant differences (*p* < 0.01) in the Dice indices of the conventional methods between small and large lesions, except in the b1000-ADC method.

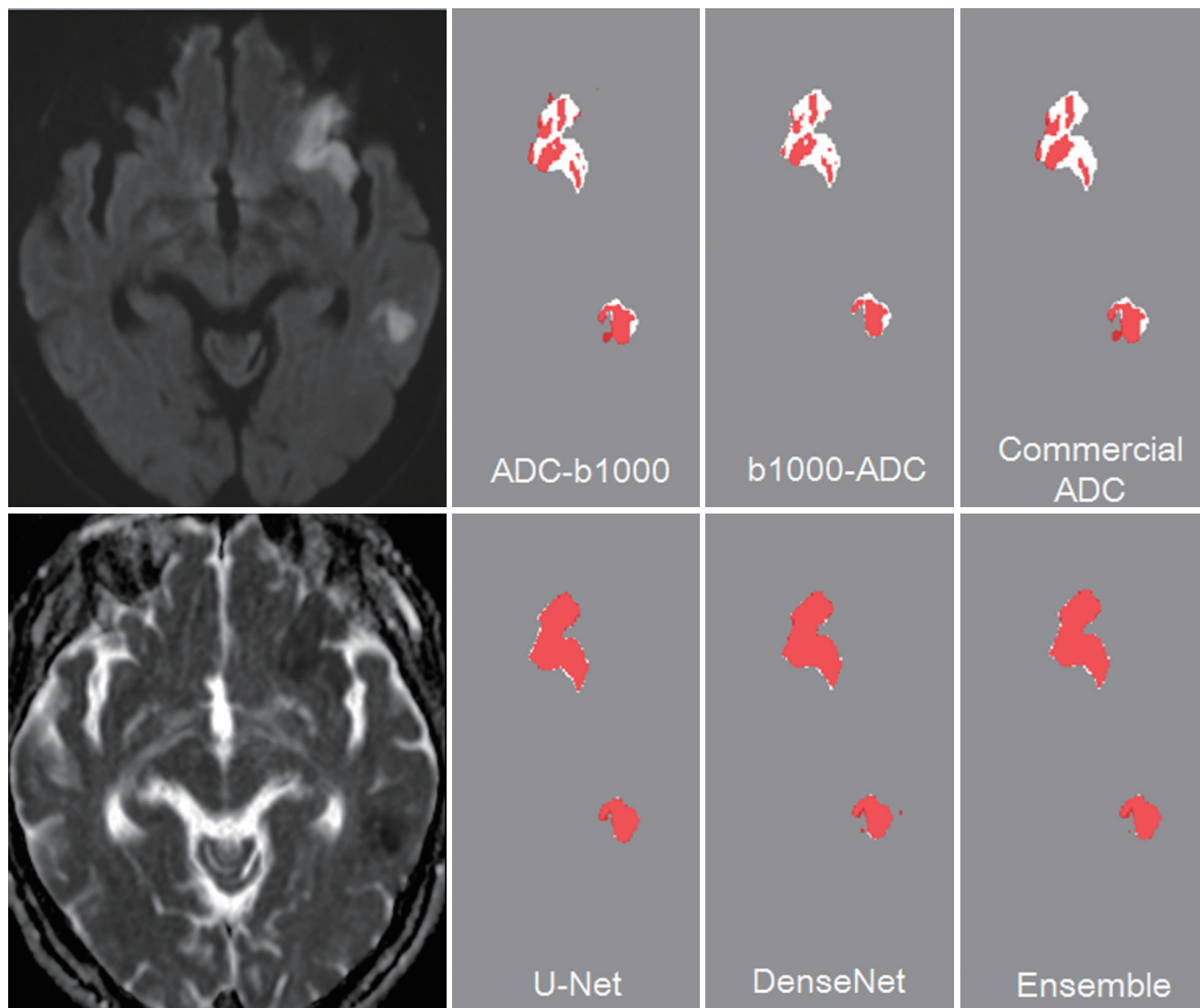
The correlation coefficients for the infarct volume between the algorithms and ground truths were 0.78 (95% confidence interval [CI], 0.68–0.85) for ADC-b1000, 0.75 (CI, 0.65–0.83) for b1000-ADC, 0.7 (CI, 0.56–0.80) for the commercial algorithm, 0.99 (CI, 0.98–0.99) for U-Net, 0.98

(CI, 0.97–0.99) for DenseNet, and 0.98 (CI, 0.98–0.99) for the ensemble of U-Net and DenseNet.

## DISCUSSION

In this study, the CNN algorithms showed superior performance to the conventional methods in the segmentation of acute cerebral ischemia. The CNN algorithms showed Dice indices of  $\geq 0.85$ , which were significantly better than those for the conventional segmentation methods, which showed Dice indices less than 0.6. The high segmentation performance of > 0.8 achieved with the CNN algorithms was preserved in subjects with small lesions and scattered infarcts, irrespective of the multiplicity of infarcts or their b1000 signal intensity. Therefore, we believe that the CNN algorithm could replace the conventional methods for automated segmentation of acute cerebral ischemia.

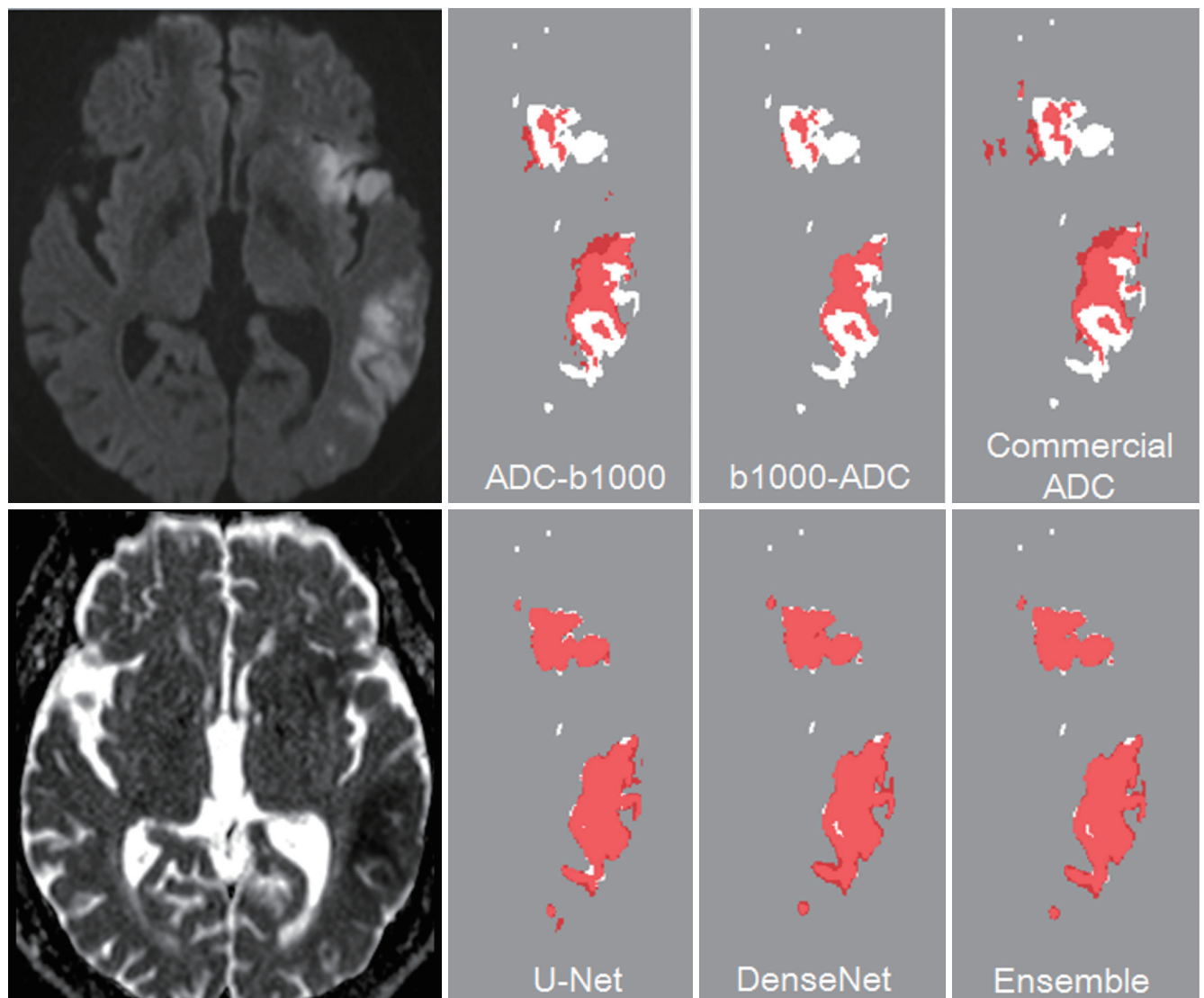
Automatic segmentation for acute cerebral ischemia is still challenging, even though previous reports have presented promising performances. Thresholding-based algorithms were preferentially considered in conventional methods because of the distinct high signal intensity of DWI and low ADC values in hyperacute to acute cerebral ischemia. Commercial software such as ‘Rapid Processing of Perfusion and Diffusion’ (RAPID) and OleaSphere adopt technical means based on low ADC values. However, the optimal ADC cutoff values for acute cerebral ischemia can vary, even though a cutoff value of  $600 \times 10^{-6} \text{ mm}^2/\text{s}$  is



**Fig. 3. 78-year-old woman with acute infarcts in left inferior frontal lobe and left temporal lobe.** Dice indices were 0.68 in ADC-b1000, 0.61 in b1000-ADC, 0.69 in commercial ADC, 0.95 in U-Net, 0.96 in DenseNet, and 0.96 in ensemble of U-Net and DenseNet algorithms for two large acute infarcts with total infarct volume of 53 mL and total of three lesions (white ROI, ground truth; red ROI, algorithm alone; pink, overlapped region between ground truth and algorithm). ADC = apparent diffusion coefficient, b1000 = b-value of 1000, DenseNet = DenseNet with squeeze-and-excitation blocks, ROI = region of interest, U-Net = U-Net with squeeze-and-excitation blocks

generally used (6). Therefore, other automatic segmentation methods have been developed, including machine learning approaches. Although another previously studied automatic segmentation method for DWI of acute cerebral ischemia presented a high diagnostic performance with a Dice index of 0.89 (13), the patient numbers used for the validation were very small ( $n = 10$ ). Other previous segmentation methods have been subject to similar limitations, with the studies focusing on the development of new methods with insufficient validation and using low numbers of subjects in the training and validation sets. These studies and their Dice indices and patient numbers are as follows: Prakash et al. (9),

Dice index = 0.6,  $n = 13$ ; Maier et al. (11), Dice index = 0.65,  $n = 37$ ; Mah et al. (4), Dice index = 0.79,  $n = 38$ ; Mohd Saad et al. (10), Dice index = 0.84,  $n = 30$ ; and Charoensuk et al. (8), Dice index = 0.85,  $n = 6$ . In the studies that were validated by substantial numbers of subjects, the newly developed segmentation methods seemed to require further development, as indicated by the following performances: Peng et al. (12), Dice index = 0.76,  $n = 98$ ; Chen et al. (3), Dice index = 0.67,  $n = 741$ ; and Boldsen et al. (5), Dice index = 0.61,  $n = 108$ . The common limitations of these segmentation methods make them difficult to apply in actual clinical practice. In this study, however, we validated the

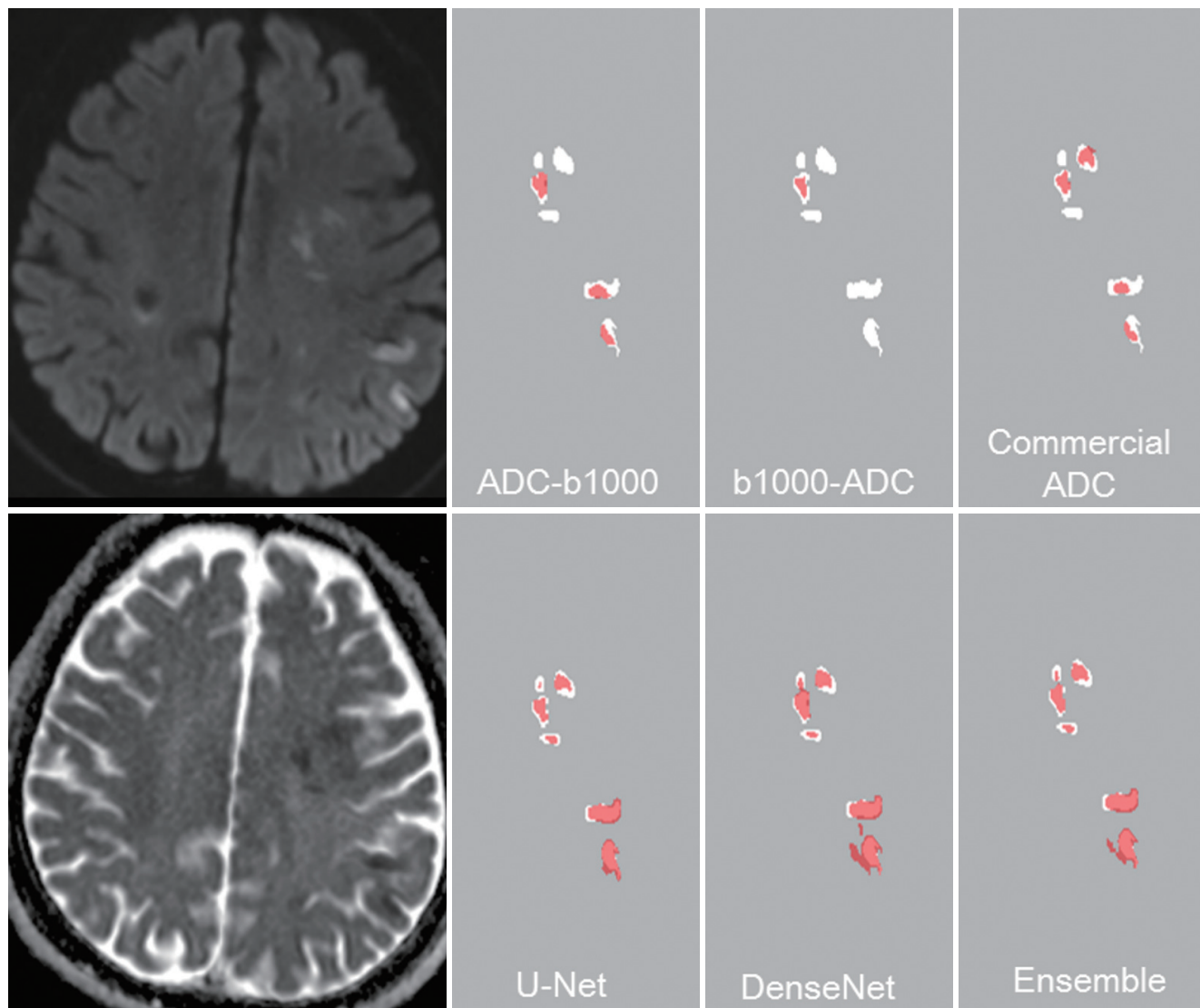


**Fig. 4.** 75-year-old man with acute infarcts in left inferior frontal lobe and left temporal lobe. Dice indices were 0.68 in ADC-b1000, 0.61 in b1000-ADC, 0.69 in commercial ADC, 0.95 in U-Net, 0.96 in DenseNet, and 0.96 in ensemble of U-Net and DenseNet algorithms for multiple small and large acute infarcts with total infarct volume of 142.43 mL and total of nine lesions (white ROI, ground truth; red ROI, algorithm alone; pink, overlapped region between ground truth and algorithm).

segmentation method with 426 subjects and obtained good segmentation performance with a Dice index above 0.85.

Chen et al. (3) recently reported the segmentation performance of a CNN algorithm tested on a large group of subjects ( $n = 741$ ) with acute cerebral ischemia. They presented a mean Dice index of 0.67 for the segmentation performance over the total subject group. They developed a CNN algorithm involving two processes: using an ensemble of  $N$  adapted DeconvNets (EDD net) to optimize lesion segmentation, and then removing false positives from the detected lesions with a Multi-Scale Convolutional Label Evaluation Net (MUSCLE net). The EDD Net was developed from the DeconvNet (25), which is one of the generic

CNN architectures for semantic segmentation (3). In this study, we developed a segmentation method using U-Net and DenseNet (which are also well-known generic semantic segmentation algorithms), combining them with squeeze-and-excitation networks. U-Net adopts U-shaped symmetric architectures with an encoder to capture the context and a decoder to enable precise localization with upsampling operators; this enables precise segmentation tasks, even with small training images (20). DenseNet is also an effective semantic segmentation algorithm with high performance that requires fewer parameters than traditional networks. DenseNet connects each layer to every other layer in a feed-forward fashion and adopts multiple densely



**Fig. 5. 76-year-old man with acute infarcts in left frontal and parietal lobe.** Dice indices were 0.45 in ADC-b1000, 0.31 in b1000-ADC, 0.40 in commercial ADC, 0.66 in U-Net, 0.63 in DenseNet, and 0.68 in ensemble of U-Net and DenseNet algorithms for multiple small acute infarcts with total infarct volume of 8.9 mL and total of 17 lesions (white ROI, ground truth; red ROI, algorithm alone; pink, overlapped region between ground truth and algorithm).

connected patterns, the so-called “dense blocks” (26). We developed the modified CNN by combining squeeze-and-excitation with two useful and effective CNN segmentation algorithms. However, one of the major difficulties in applying these segmentation methods to medical imaging is the loss of fine-grained information as a result of pooling in an encoding layer. To alleviate this problem, methods for enhancing the relationship with features significantly increased performance by introducing skip connection. The squeeze-and-excitation operations may help improve segmentation for discontinuous or small lesions, such as acute ischemic lesions, on DWI. Therefore, our proposed method is regarded as a fully CNN for segmenting size-

invariant infarct lesions.

Chen et al. (3) reported segmentation performances of 0.61 for small lesions and 0.83 for large lesions. Our CNNs showed a high segmentation performance of 0.8 even in small lesions. Furthermore, the degree of DWI signal intensity and scattered lesions did not affect the segmentation performance. In addition, the DWI protocols in this study varied considerably because of the retrospective study design and substantial outside images. However, the segmentation performances were preserved across the different protocols and machines.

The conventional segmentation methods showed inferior results to the CNN algorithms. The threshold-based methods



and commercial version showed Dice indices of 0.58 and 0.52, respectively. Although the threshold-based methods were in-house algorithms, their performance outcomes were higher than those reported by Boldsen et al. (5). They reported Dice indices of 0.4 (threshold-based methods using DWI signal intensity) and 0.3 (threshold-based methods using ADC values) in 108 patients with acute cerebral ischemia (5). In this study, the commercial ADC algorithm showed a strong correlation with the ground truth data in terms of volume, as did the RAPID system in a previous study (6). Therefore, the conventional algorithms evaluated in this study had similar or superior segmentation performance to the conventional algorithms described in previous reports. Nevertheless, the CNN algorithms showed superior segmentation performances to the conventional algorithms.

This study is subject to several limitations. First, the CNN algorithm was validated in only a single referral center using a retrospective registry. Therefore, the CNN algorithm requires external validation with prospectively enrolled patients or a strictly controlled registry. Second, although we tried to enroll as many patients as possible and demonstrated the saturated performance of the CNN algorithm as the patient number increased, further data may be warranted. Third, inter-observer variability was not evaluated in this study, even though the achieved Dice index of 0.84 is within or out of the range indicating inter-observer variability. Further investigations regarding the reproducibility of this new algorithm are therefore warranted.

In conclusion, the CNN algorithm for automatic segmentation of acute ischemic lesions on DWI achieved Dice index values greater than or equal to 0.85 and showed superior performance to conventional algorithms. Our segmentation method showed a stable segmentation performance across the various DWI protocols, even in subjects with small and scattered lesions, and irrespective of the multiplicity or b1000 signal intensity of the infarcts.

#### Conflicts of Interest

The authors have no potential conflicts of interest to disclose.

#### Acknowledgments

The authors gratefully acknowledge technical support from the Medical Imaging and Robotics Laboratory (MIRL), Department of Radiology, Asan Medical Center.

#### ORCID iDs

Seung Chai Jung  
<https://orcid.org/0000-0001-5559-7973>  
 Ilsang Woo  
<https://orcid.org/0000-0001-8268-9216>  
 Areum Lee  
<https://orcid.org/0000-0001-7414-4232>  
 Hyunna Lee  
<https://orcid.org/0000-0003-1669-3086>  
 Namkug Kim  
<https://orcid.org/0000-0002-3438-2217>  
 Se Jin Cho  
<https://orcid.org/0000-0001-6450-7554>  
 Donghyun Kim  
<https://orcid.org/0000-0002-3429-7557>  
 Jungbin Lee  
<https://orcid.org/0000-0002-6240-8277>  
 Leonard Sunwoo  
<https://orcid.org/0000-0003-0374-8658>  
 Dong-Wha Kang  
<https://orcid.org/0000-0002-2999-485X>

#### REFERENCES

1. Wheeler HM, Mlynash M, Inoue M, Tipirneni A, Liggins J, Zaharchuk G, et al.; DEFUSE 2 Investigators. Early diffusion-weighted imaging and perfusion-weighted imaging lesion volumes forecast final infarct size in DEFUSE 2. *Stroke* 2013;44:681-685
2. Muir KW, Buchan A, von Kummer R, Rother J, Baron JC. Imaging of acute stroke. *Lancet Neurol* 2006;5:755-768
3. Chen L, Bentley P, Rueckert D. Fully automatic acute ischemic lesion segmentation in DWI using convolutional neural networks. *Neuroimage Clin* 2017;15:633-643
4. Mah YH, Jager R, Kennard C, Husain M, Nachev P. A new method for automated high-dimensional lesion segmentation evaluated in vascular injury and applied to the human occipital lobe. *Cortex* 2014;56:51-63
5. Boldsen JK, Engedal TS, Pedraza S, Cho TH, Thomalla G, Nighoghossian N, et al. Better diffusion segmentation in acute ischemic stroke through automatic tree learning anomaly segmentation. *Front Neuroinform* 2018;12:21
6. Straka M, Albers GW, Bammer R. Real-time diffusion-perfusion mismatch analysis in acute stroke. *J Magn Reson Imaging* 2010;32:1024-1037
7. Forbes F, Doyle S, Garcia-Lorenzo D, Barillot C, Dojat M. Adaptive weighted fusion of multiple MR sequences for brain lesion segmentation. 2010 IEEE international symposium on biomedical imaging: from nano to macro;2010 April 14-17;Rotterdam, Netherlands

8. Charoensuk W, Covavisaruch N, Lerdlum S, Likitjaroen Y. Acute stroke brain infarct segmentation in DWI images. *Int J Pharm Med Biol Sci* 2015;4:115-122
9. Prakash KNB, Gupta V, Bilello M, Beauchamp NJ, Nowinski WL. Identification, segmentation, and image property study of acute infarcts in diffusion-weighted images by using a probabilistic neural network and adaptive Gaussian mixture model. *Acad Radiol* 2006;13:1474-1484
10. Mohd Saad N, Noor NSM, Abdullah AR, Sobri Muda, Muda AF, Abdul Rahman NNS. *Automated stroke lesion detection and diagnosis system*. International MultiConference of engineers and computer scientists;2017 March 15-17;Hong Kong, China
11. Maier O, Wilms M, von der Gablentz J, Krämer UM, Münte TF, Handels H. Extra tree forests for sub-acute ischemic stroke lesion segmentation in MR sequences. *J Neurosci Methods* 2015;240:89-100
12. Peng Y, Zhang X, Hu Q. Segmentation of hyper-acute ischemic infarcts from diffusion weighted imaging based on support vector machine. *Journal of Computer and Communications* 2015;3:152-157
13. Nag MK, Koley S, China D, Sadhu AK, Balaji R, Ghosh S, et al. Computer-assisted delineation of cerebral infarct from diffusion-weighted MRI using Gaussian mixture model. *Int J Comput Assist Radiol Surg* 2017;12:539-552
14. Warach S, Chien D, Li W, Ronthal M, Edelman RR. Fast magnetic resonance diffusion-weighted imaging of acute human stroke. *Neurology* 1992;42:1717-1723
15. van Everdingen KJ, van der Grond J, Kappelle LJ, Ramos LMP, Mali WPTM. Diffusion-weighted magnetic resonance imaging in acute stroke. *Stroke* 1998;29:1783-1790
16. Purushotham A, Campbell BC, Straka M, Mlynash M, Olivot JM, Bammer R, et al. Apparent diffusion coefficient threshold for delineation of ischemic core. *Int J Stroke* 2015;10:348-353
17. Ogata T, Christensen S, Nagakane Y, Ma H, Campbell BC, Churilov L, et al.; EPITHET and DEFUSE Investigators. The effects of alteplase 3 to 6 hours after stroke in the EPITHET-DEFUSE combined dataset: post hoc case-control study. *Stroke* 2013;44:87-93
18. Lee JG, Jun S, Cho YW, Lee H, Kim GB, Seo JB, et al. Deep learning in medical imaging: general overview. *Korean J Radiol* 2017;18:570-584
19. Woo I, Lee AR, Lee H, Choi K, Kang DW, Jung SC, et al. *Sementic segmentation with squeeze-and-excitation block: application to infarct segmentation in DWI*. NIPS 2017: the thirty-first annual conference on Neural Information Processing Systems;2017 December 4-9;Long Beach, CA, USA
20. Ronneberger O, Fischer P, Brox T. *U-Net: convolutional networks for biomedical image segmentation*. 18th Medical Image Computing and Computer Assisted Interventions (MICCAI);2015 October 5-9;Munich, Germany
21. Jégou S, Drozdal M, Vazquez D, Romero A, Bengio Y. *The one hundred layers tiramisu: fully convolutional DenseNets for semantic segmentation*. IEEE Conference on Computer Vision and Pattern Recognition Workshop (CVPRW);2017 July 21-26; Honolulu, HI, USA
22. Hu J, Shen L, Sun G. *Squeeze-and-excitation networks*. IEEE conference on Computer Vision and Pattern Recognition(CVPR);2018 June 18-22; Salt Lake City, UT, USA
23. Nair V, Hinton GE. *Rectified linear units improve restricted boltzmann machines*. 27th international conference on international conference on machine learning;2010 June 21-24;Haifa, Israel
24. Shinohara RT, Sweeney EM, Goldsmith J, Shiee N, Mateen FJ, Calabresi PA, et al.; Australian Imaging Biomarkers Lifestyle Flagship Study of Ageing; Alzheimer's Disease Neuroimaging Initiative. Statistical normalization techniques for magnetic resonance imaging. *Neuroimage Clin* 2014;6:9-19
25. Noh H, Hong S, Han B. Learning deconvolution network for semantic segmentation. IEEE international conference on computer vision (ICCV);2015 December 7-13; Santiago, Chile
26. Huang G, Liu Z, van der Maaten L, Weinberger KQ. *Densely connected convolutional networks*. IEEE conference on Computer Vision and Pattern Recognition(CVPR);2017 July 21-26; Honolulu, HI, USA