

2. Mathijssen IM, van der Meulen JC. Guidelines for reconstruction of the eyelids and canthal regions. *J Plast Reconstr Aesthet Surg* 2010;63:1420-33.
3. Bozkurt M, Kulahci Y, Kapi E, et al. A new design for superficial temporal fascial flap for reconstruction of the eyebrow, upper and lower eyelids, and lacrimal system in one-stage procedure: medusa flap. *Ann Plast Surg* 2009;63:636-9.

Squamous cell carcinoma identified in a thick-walled epidermal cyst with a recurrent ulcer

Jae-Won Kim, Chan-Su Kang, Jin Ho Lee, Kyu Jin Chung
Department of Plastic and Reconstructive Surgery, Yeungnam University College of Medicine, Daegu, Korea

Correspondence: Kyu Jin Chung
 Department of Plastic and Reconstructive Surgery, Yeungnam University College of Medicine, 170 Hyeonchung-ro, Nam-gu, Daegu 42415, Korea
 Tel: +82-53-620-3484, Fax: +82-53-626-0705
 E-mail: chungkj@ynu.ac.kr

This work was supported by Yeungnam University grants in 2017.

Received: 7 Sep 2018 • Revised: 10 Oct 2018 • Accepted: 18 Oct 2018
 pISSN: 2234-6163 • eISSN: 2234-6171
<https://doi.org/10.5999/aps.2018.01046>
Arch Plast Surg 2019;46:94-95



Copyright © 2019 The Korean Society of Plastic and Reconstructive Surgeons
 This is an Open Access article distributed under the terms of the Creative Commons Attribution Non-Commercial License (<http://creativecommons.org/licenses/by-nc/4.0/>) which permits unrestricted non-commercial use, distribution, and reproduction in any medium, provided the original work is properly cited.

recommended in the setting of plastic surgery [1]. We report a case of squamous cell carcinoma (SCC) confirmed in a residual wound after resection of a cutaneous cyst. A 46-year-old male patient underwent local resection of a cystic lesion in the left nasal alar region 3 weeks before at a local medical center without biopsy. He developed tenderness, fever, and erythema over the wound, and visited our hospital (Fig. 1A). While the planned excision was performed, a 0.8 × 0.9-cm-thick white capsule was observed (Fig. 2). Therefore, a biopsy including skin tissue was performed. A SCC was then diagnosed (Fig. 3), and additional resection with a 5-mm safety margin was performed. During the 18-month follow-up period, no recurrence was observed (Fig. 1B). Owing to the rarity of SCC arising from epidermal cysts, the nature and mechanism of this phenomenon remains uncertain. Malignant change of an epidermal

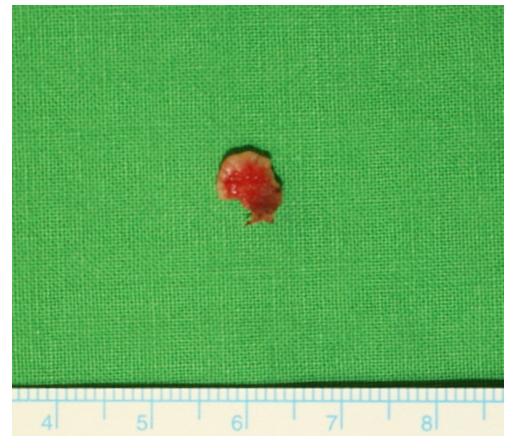


Fig. 2. A biopsy specimen. A 0.8 × 0.9-cm-thick white capsule was observed.

Epidermal cysts are common skin tumors. In order to achieve cost-effectiveness, routine biopsy is not



Fig. 1. (A) The patient at his first visit to our hospital. He had developed tenderness, febrile sensation, and erythema on the wound in the left nasal alar region. (B) Six-month postoperative follow-up. The patient shows a well-healed state in the nasal alar region without recurrence.

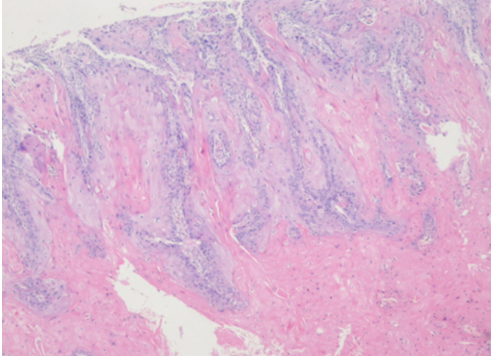


Fig. 3.

Cells showing mild to moderate atypia with abundant pink cytoplasm and carcinoma with well-developed keratinization, showing infiltration downward. These are typical findings of squamous cell carcinoma (hematoxylin and eosin stain, $\times 40$).

cyst is suspected when a chronic wound shows a sudden increase in size and ulceration. In such cases, other authors have suggested that biopsy and complete excision with a pathological examination should be performed [2]. According to a recent study, reported cases of SCC from epidermal cysts have increased [3]. Thus, to exclude malignant tumors, a biopsy is recommended when epidermal cysts with recurrent ulcers show wall thickening.

Notes

Conflict of interest

No potential conflict of interest relevant to this article was reported.

Ethical approval

The study was approved by the Institutional Review Board of Yeungnam University Hospital (IRB No. YUMC 2018-09-026) and performed in accordance with the principles of the Declaration of Helsinki. Written informed consent was obtained.

Patient consent

The patient provided written informed consent for the publication and the use of his images.

ORCID

Jae-Won Kim <https://orcid.org/0000-0003-1254-6580>

Chan-Su Kang <https://orcid.org/0000-0002-2005-6779>

Jin Ho Lee <https://orcid.org/0000-0003-2574-2628>

Kyu Jin Chung <https://orcid.org/0000-0001-6335-1818>

References

1. Fisher M, Alba B, Bhuiya T, et al. Routine pathologic evaluation of plastic surgery specimens: are we wasting time and money? *Plast Reconstr Surg* 2018;141:812-6.
2. Lee JW, Shin JY, Roh SG, et al. Squamous cell carcinoma arising from an epidermal inclusion cyst. *Arch Plast Surg* 2016;43:112-4.
3. Frank E, Macias D, Hondorp B, et al. Incidental squamous cell carcinoma in an epidermal inclusion cyst: a case report and review of the literature. *Case Rep Dermatol* 2018;10:61-8.