

Hydrophilic Extracts of the Bark from Six *Pinus* Species¹

Masendra² · Tatsuya Ashitani³ · Koetsu Takahashi³ · Mudji Susanto⁴ · Ganis Lukmandaru^{2,†}

ABSTRACT

Pine barks are important biomass resources because they are utilised in the production of pine wood and rosins. However, no chemical study has been conducted on the hydrophilic status of pine barks in Indonesia. This aim of this study is to explore the hydrophilic extracts of the barks from six *Pinus* species (*P. elliotii*, *P. caribaeae*, *P. oocarpa*, *P. merkusii*, *P. montezumae*, and *P. insularis*). The hydrophilics of pine barks were analysed using gas chromatography-mass spectrometry. The presence of polyphenol contents in the ethanol extracts obtained from the barks of six *Pinus* species was determined using the tannin-formaldehyde method, Folin-Ciocalteu assay, and vanillin-HCl assay. The ethanol and hot water soluble extractives derived from inner barks were higher in quantity when compared to those derived from the outer bark samples. The polyphenol measurement showed that the highest value of total phenol content was derived from the outer bark of *P. montezumae* whereas those of the total phenol and tannin-formaldehyde contents were derived from the inner and outer barks of *P. oocarpa*. GC-MS analysis revealed that nitrogenous compounds are dominant constituents in the inner and outer barks of the six species, followed by sugars and monophenolics, respectively.

Keywords: bark, hydrophilic, extractive content, total phenols, total flavanols, pinus

1. INTRODUCTION

Pine wood is good for providing long fiber for pulp and paper products and this utilisation process produces residues known as pine barks which make up about 10- 15 % of the total tree weight (Ku *et al.*, 2007). Pine bark contains high levels of polyphenol and bioactive compounds (Nunes *et al.*, 1999; Hafizoğlu *et al.*, 2002) which can potentially be used for pharmaceutical purposes, such as antioxidant (Ku *et al.*, 2007; Cadiz-Gurerrea *et al.*, 2014), anti-fungi

(Morita *et al.*, 2001), antitumor (Amalinei *et al.*, 2014) and anti-cancer activities (Yesil-Celiktas *et al.*, 2009). Those bioactive compounds were detected as flavonoids in *P. brutia*, *P. pinea*, *P. sylvestris*, *P. nigra* and *P. radiata* (Yesil-Celiktas *et al.*, 2009; Cadiz-Gurerrea *et al.*, 2014; Amalinei *et al.*, 2014; Mun, 2014; Mun and Nicholas, 2017). However, no previous study has been conducted on the flavonoids derived from the bark of Indonesian pine *P. merkusii*.

P. merkusii is a native species in South East Asia especially in Indonesia and it has been utilised for its

¹ Date Received November 16, 2017, Date Accepted December 31, 2018

² Department of Forest Products Technology, Faculty of Forestry, Universitas Gadjah Mada, Jl. Agro No.1, Bulaksumur, Sleman 55281, Indonesia

³ Faculty of Agriculture, Yamagata University, 1-23 Wakaba-machi, Tsuruoka, Yamagata 997-855, Japan

⁴ Center for Forest Biotechnology and Tree Improvement Research, Jl Palagan Tentara Palagan KM 15, Sleman 55582, Indonesia

† Corresponding author: Ganis Lukmandaru (e-mail: glukmandaru@ugm.ac.id, ORCID: 0000-0003-2203-4247)

rosin and long fiber. Because the presence of pine wood in providing long fiber and rosin in Indonesia is limited to *P. merkusii*, other species of *Pinus* e.g. *P. elliotii*, *P. caribaeae*, *P. oocarpa*, *P. montezumae*, and *P. insularis* were introduced. As the materials to be utilised, it is necessary to pay attention to the basic properties of the pines. In the previous study, we reported the lipophilic extractives of the inner and outer barks of these *Pinus* (Masendra *et al.*, 2018a, 2018b). However, information on the hydrophilic extracts from the inner and outer barks of these pines remains unknown. Therefore this is the first time that the chemical composition of the hydrophilic extracts of the inner and outer barks of six *Pinus* species which were grown in Indonesia is being reported.

2. MATERIALS and METHODS

2.1. Sample collection and extraction

The materials that were used in the process of conducting this study were obtained from the site of The Center for Forest Biotechnology and Tree Improvement Research, Situbondo, East Java, Indonesia. Two individual trees of each species (36- 88 years old) were selected and their bark samples were taken. The species were *P. elliotii* (seed source: USA), *P. caribaeae* (USA), *P. oocarpa* (Australia), *P. merkusii* (Indonesia), *P. montezumae* (Mexico) and *P. insularis* (Australia). The thickness of the inner barks ranged from 0.1-0.3cm, while that of the outer barks was from 0.3-1.6cm.

After radial separation, each portion was milled to produce bark powder (100 mesh) which was then extracted (2g) with dichloromethane and ethanol for 6h in a Soxhlet apparatus and with hot water for 3h in a reflux apparatus (Nunes *et al.*, 1999). The solvent was evaporated to make it dry then the extracts were weighed. The results were expressed in percent of dry bark.

2.2. Total phenols determination

The total phenol was observed using a modified version of the Folin-Ciocalteu method (Diouf *et al.*, 2009). Briefly, 2.5ml of Folin-Ciocalteu phenol reagent (10 times dilution) was mixed with 0.5ml of ethanol solution of the sample (0.25mg/ml) in a 9ml glass. After a period of 2mins, 2ml of 7.5% aqueous sodium carbonate (Na_2CO_3) was added to the glass and the mixture was allowed to stand for 30mins at ambient temperature. The absorbance of chromogen formed was read at 765nm. The results were expressed as gallic acid equivalents (mg GAE/g based on dry extract weight). The regression coefficient of gallic acid was 0.9973.

2.3. Total flavanols determination

The total content of flavanol was determined by a modification of the vanillin- HCl assay described by Richard *et al.* (1978). 0.5ml (0.25mg/ml) of ethanol solution from the sample, 3ml of vanillin reagent (4% vanillin in methanol) and 1.5ml of HCl were added and the reaction was allowed to stand for 15mins at ambient temperature. The absorbance was read at 500nm. Results were expressed in (+)-catechin equivalents (mg CE/g based on dry weight). The regression coefficient of (+)-catechin was 0.9953.

2.4. Tannin–formaldehyde determination

The tannin-formaldehyde quantification was carried out using the Humphreys procedure (1956). Briefly, the bark sample (2g) was refluxed with distilled water thrice and the samples were filtered afterwards. The filtrate was cooled to 18°C and quantitatively transferred to a 500ml volumetric flask. Furthermore, 100ml of the solution was taken and added to 10ml of formalin and 5ml of concentrated hydrochloric acid, then the

mixture was refluxed for 30 minutes and rapidly cooled at room temperature. Later, the precipitate was filtered and weighed for results. The tannin-formaldehyde is expressed as a percentage of the bark with the equation as follows:

$$\text{Tannin-Formaldehyde (\%)} = (4.425 \times A \times 10000) / (W \times (100 - \text{M.C. of sample}))$$

where A is the weight of the precipitate (gram) and W is the weight of the bark sample (gram).

2.5. Determination of pH value

The hydrogen-ion activity or pH value was measured using a pH meter (HORIBA). The bark sample (1g) was submerged in 20ml of distilled water and the pH was measured after 24h.

2.6. GC–MS analysis

For GC-MS analysis, each sample was trimethylsilylated. 40µl of the sample (1mg/ml) and 40µl of veratric acid (1mg/ml) were mixed and then evaporated. Then the sample was added to trimethylsilyl-hydroxyl (TMS-IH) and N, O-bis [trimethylsilyl] acetamide (BSA) each being 20µl in quantity. The reaction was allowed to stand for 30mins before injection. GC-mass spectrometry (GC-MS) data were collected with a GCMS-QP 2010 (Shimadzu, Japan) under the following conditions: DB-1 capillary column (30m × 0.25mm I.D. and 0.25µ m; GL Sciences, Tokyo, Japan); column temperature from 50°C (1min) to 320°C at 5°C/min; injection temperature of 250°C; detection temperature of 320°C and acquisition mass ranging from 50-800 amu using helium as the carrier gas. The components were identified by comparison with NIST MS library and literature (Petersson, 1969; Medeiros and Simoneit, 2007; Pruestos and Komaitis, 2013). The components were

quantified by comparison with internal standards i.e. veratric acid.

3. RESULTS and DISCUSSION

3.1. Ethanol and hot water extractive contents

The dichloromethane soluble extracts were previously reported and they ranged from 0.7% -4.5% of dry extract (Masendra *et al.*, 2018a). The measurement of ethanol and hot water extractive contents showed that the quantity extracted from the inner bark parts was much higher than from the outer bark parts except for hot water extractive of *P. elliotii* (Fig. 1). The results showed that the ethanol extractive levels were higher than those of hot water extractives.

The inner bark sample which produced the highest ethanol extract level was that of *P. oocarpa* (24.7%), while the outer bark of *P. merkusii* produced the lowest (6.0%) compared to those of other species. These quantities were within the range published for ethanol soluble extract from the bark of *P. pinea* (Miranda *et al.*, 2017) and *P. taeda* (Eberhardt, 2012). The measurement of hot water extract revealed that *P. caribea* has the highest level (13.4%) while the lowest was observed in *P. elliotii* (3%). These hot water soluble extracts were expected to be of levels similar to those found in the bark of *P. pinea* (Nunes *et al.*, 1999), *P. taeda* (Eberhardt, 2012), *P. densiflora*, *P. thunbergii*, *P. banksiana* and *P. contorta* (Ku *et al.*, 2007).

When compared to the radial parts, the ethanol extracts from the inner barks of *P. elliotii*, *P. oocarpa*, and *P. merkusii* were 2 times higher, whereas, the extracts from the inner bark of *P. insularis* was 4 times higher than from the outer barks. The hot water extractive contents derived from the inner barks also remained higher than the quantities derived from the outer barks but there was an exception in the case of

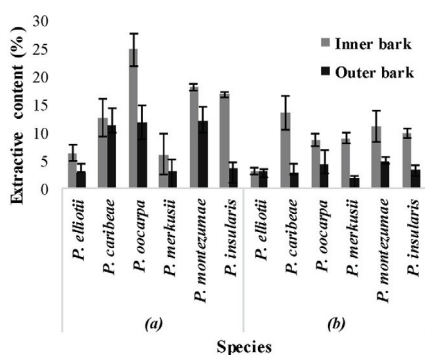


Fig. 1. Ethanol extractive content (a) and hot water extractive content (b) of bark of six pine species (weight percentage of oven-dry wood, average from two measurements).

P. elliotii. The quantities of hot water extracted from the inner barks of *P. oocarpa* and *P. montezumae* were twice as high as the quantities derived from their respective outer barks (Fig. 1). Furthermore, the contents in the inner barks of *P. caribaea* and *P. merkusii* were 4 times higher than those in their respective outer barks while that in the inner bark of *P. insularis* was approximately 3 times higher than in its outer bark. Thus, it can be observed that the presence of hydrophilic extractives in the inner barks decreased toward the outer bark samples. The higher accumulation of hydrophilic extractives in the inner bark samples also indicated that this part contains higher quantities of sugar and tannin

as reported in the literature (Krogell *et al.*, 2012; Eberhardt, 2012).

3.2. Total phenols, total flavanols, tannin-formaldehyde content, and pH value

The result of the total phenols, total flavanols, tannin-formaldehyde contents and pH values are presented in Table 1. In six *Pinus* species, the quantities of total phenols present in the outer bark samples were higher than in the inner barks of all while the opposite trend was observed in total flavanols. The differences of the pine species appeared to affect the values of total phenols, total flavanols and tannin-formaldehyde. The highest and lowest quantities of total phenol were observed in the outer barks of *P. montezumae* (916.2mg GA/ g) and *P. merkusii* (486.5mg GA/ g), respectively. Furthermore, the total flavanol content in the inner bark of *P. oocarpa* was 863.1mg CE/ g while that of *P. elliotii* was 40.2mg CE/ g. Compared to earlier reports, the total phenol contents of inner and outer bark samples were within the range reported for the barks of *P. thunbergii*, *P. banksiana*, *P. radiata*, and *P. koraiensis* (Ku *et al.*, 2007).

P. oocarpa (15.1%) and *P. montezumae* (14.2%) displayed the highest levels of tannin-formaldehyde contents, while *P. merkusii* (0.4%) showed the lowest. These values were lower than those found for Stiasny number in the bark of *P. densiflora* (Kofujita *et al.*, 1999)

Table 1. Total phenols, flavanols, tannins, and pH of inner and outer bark of six *Pinus* species (average of two measurements; standard deviation)

Parameter	<i>P. elliotii</i>		<i>P. caribaea</i>		<i>P. oocarpa</i>		<i>P. merkusii</i>		<i>P. montezumae</i>		<i>P. insularis</i>	
	Inner	Outer	Inner	Outer	Inner	Outer	Inner	Outer	Inner	Outer	Inner	Outer
Total phenols ^a	558.2 (48.6)	666.2 (258.4)	577.3 (207.8)	658.4 (21.6)	450.1 (62.9)	829.5 (15.9)	421.4 (123.4)	486.5 (132.3)	546.0 (133.6)	916.2 (34.3)	499.1 (6.7)	758.8 (60.7)
Total flavanols ^b	467.3 (9.6)	42.0 (12.0)	380.6 (30.9)	151.0 (146.6)	863.1 (234.6)	324.8 (44.8)	367.4 (144.5)	55.2 (30.4)	479.7 (9.1)	318.8 (260.2)	469.9 (14.4)	107.7 (33.1)
Tannin-formaldehyde ^c	nd	1.6 (1.2)	nd	7.9 (7.3)	nd	15.1 (1.2)	nd	0.4 (0.1)	nd	14.2 (0.5)	nd	1.6 (0.1)
pH	6.2 (0)	4.45 (0.1)	6.5 (0)	4.25 (0.1)	6.15 (0.1)	4.7 (0.1)	6.15 (0.1)	4.45 (0.1)	5.9 (0)	4.3 (0)	6.25 (0.2)	4.5 (0.3)

Note : a = total phenols are expressed in mg of gallic acid equivalent per g of dry extracts.

b = total flavanols are expressed in mg (+)- catechin equivalent per g of dry extracts.

c = tannin-formaldehyde are in weight percentage of oven-dry bark.

nd = not determined.

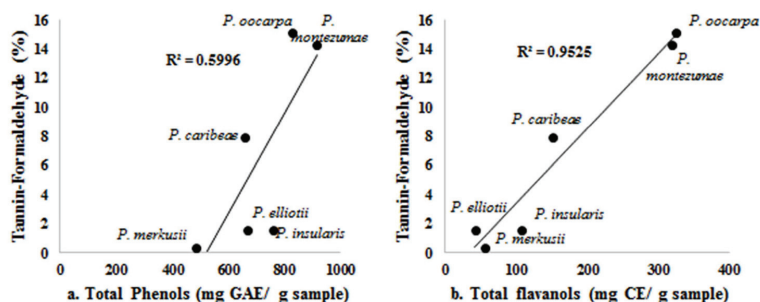


Fig. 2. Correlation between tannin-formaldehyde and total phenols (a) and total flavanols (b).

and *P. radiata* (Morita *et al.*, 2001). Due to the paucity of the inner bark samples, the measurement of tannin formaldehyde in the inner barks was not conducted.

Tannins are water-soluble phenolic compounds with their molecular weights ranging from 500 to 3000 and they are classified into hydrolyzable (aliphatic polyol and phenolic acids) and condensed tannins proanthocyanidins (Umezawa, 2001). Our results indicated that tannin-formaldehyde values correlated better with the total flavanol content than they did with total phenol content (Fig. 2. a and b). It could be considered that tannin-formaldehyde in the bark of the six *Pinus* species contain condensed tannins with a flavan-3-ol structure (C4-C8 bonds). This finding is consistent with those of Mun and Nicholas (2017), Mun (2014), Yesil-Celiktas *et al.* (2009), and Ku *et al.* (2007) in which taxifolin, catechin, and proanthocyanidin were found in the bark of *P. brutia*, *P. pinea*, *P. sylvestris*, *P. nigra* and *P. radiata*.

The pH values of samples had ranged from 4.2 to 6.5, meaning that all samples were acidic. The outer bark of *P. caribea* had the lowest pH value (4.25), while its inner bark had the highest (6.5). These results corroborate the findings of a great deal of the previous study which stated that the outer barks of some trees in Europe were more acidic than their inner barks (Fengel and Wegener, 1989). In relation to total phenols, the values of outer bark samples were higher than those of inner barks (Table 1). Thus, it can be suggested that the pH values were partly affected by phenolic contents.

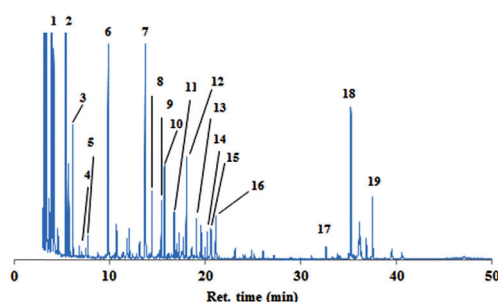


Fig. 3. Chromatogram of ethanol extract from *P. merkusii*, peak 1. Pyrazine (5.4 min), peak 2. Glycerol (5.5 min), peak 3. N,O-Bis carbamate (6.2 min), peak 4. Methylmalonic monoamide (6.8 min), peak 5. 2,5-Furandione (7.8 min), peak 6. Monoamidomalonic acid (9.9 min), peak 7. Veratric acid (IS: Internal Standard), peak 8. Malonyldiamide (14.5 min), peak 9. N-Acetylglutamine (15.5 min), peak 10. Xylitol (15.8 min), peak 11. D-Psicopyranose (isomer 2) (17.8 min), peak 12. D-Pinitol (18.1 min), peak 13. Glucopyranose (19.1 min), peak 14. D-Mannitol (20.2 min), peak 15. D-Pinitol, isomer (20.6 min), peak 16. Glucopyranose (21.1 min), peak 17. Thymol- β -D-glucopyranoside (33.8 min), peak 18. TMS catechol lactate (35.3 min), peak 19. Normorphine (37.5 min).

3.3. GC-MS analysis

The ethanol soluble extract of the bark samples were investigated by GC-MS for the composition of

Table 2. Hydrophilic constituents of the inner and outer barks identified by GC-MS (percentage of dry-weight extract, average of two measurements)

Constituents	Retention time (min)	<i>P. elliotii</i>		<i>P. caribaeae</i>		<i>P. oocarpa</i>		<i>P. merkusii</i>		<i>P. montezumae</i>		<i>P. insularis</i>		Similarity Index (%)
		IB	OB	IB	OB	IB	OB	IB	OB	IB	OB	IB	OB	
Nitrogenous compounds		23.58	10.38	23.21	9.6	22.62	18.31	38.46	11.85	21.6	12.25	18.69	21.31	
Pyrazine ^a	5.4	7.29	1.47	9.16	1.53	9.70	1.99	9.64	2.15	6.24	1.83	8.11	2.97	69
Glycine ^a	6.0	-	-	0.87	-	0.03	3.34	0.17	-	0.06	-	0.03	-	69
N,O-Bis carbamate ^a	6.2	4.09	2.24	1.19	0.82	1.92	2.21	5.38	1.23	3.65	1.51	1.15	2.73	83
Methylmalonic monoamide ^a	6.8	0.37	0.26	0.25	0.27	0.27	0.38	0.46	0.14	0.33	0.13	0.21	0.47	77
Propylamine ^a	7.0	-	-	0.02	-	0.07	0.02	0.07	-	0.03	-	0.02	-	72
Serine ^a	7.1	-	-	0.02	-	0.05	-	0.14	-	0.05	-	0.03	-	74
2,5-Furandione ^a	7.8	0.42	0.26	-	0.23	-	0.42	0.37	0.42	0.45	0.47	0.32	0.35	72
1,3,4-Thiadiazole ^a	9.5	0.06	-	0.07	-	0.06	-	0.11	-	0.08	-	0.02	5.07	66
Monoamidomalonic acid ^a	9.9	7.45	4.00	7.12	3.41	6.23	7.18	10.32	6.24	6.69	6.29	5.47	6.87	86
Ala.-beta.-Ala, N-TMS ^a	14.1	0.08	-	-	0.15	-	0.38	-	0.19	0.03	0.16	-	-	73
Malonyldiamide ^a	14.5	2.42	1.40	2.14	1.54	1.96	1.43	2.96	1.03	1.96	1.01	1.53	1.78	73
N-Acetylglutamine ^a	15.5	1.39	0.32	2.18	1.18	2.03	0.41	2.73	0.45	1.73	0.36	1.79	0.38	74
1,3,5-Triazine ^a	18.6	-	-	0.21	-	0.30	-	0.45	-	0.30	-	-	-	67
1H-imidazole-1-carboxamide ^a	18.7	-	0.44	-	0.48	-	0.54	-	-	-	0.48	-	0.68	58
Normorphine ^a	37.5	-	-	-	-	-	-	5.66	-	-	-	-	-	49
Sugar^a		11.23	9.48	10.48	2.77	5.57	6.51	32.58	8.72	5.45	7.83	5.15	12.63	
Glycerol ^b	5.5	1.73	2.54	2.37	1.21	0.49	1.02	8.08	1.98	1.02	1.05	0.37	2.95	91
Xylitol ^b	15.8	0.86	2.44	2.66	0.12	0.26	0.79	6.40	0.17	0.36	0.52	0.43	1.07	96
D-Psicopyranose, (isomer 2)	17.8	1.21	-	0.48	-	0.85	0.22	1.34	-	0.47	-	0.59	-	94
D-Pinitol ^b	18.1	2.22	0.37	1.85	0.89	1.79	1.99	8.66	1.34	1.72	2.10	2.29	0.98	93
Glucopyranose ^b	19.1	2.23	-	0.95	-	0.66	-	2.38	0.72	0.70	-	0.68	-	96
Galactopyranose ^a	19.2	-	0.77	0.15	-	0.44	1.00	-	0.19	0.10	1.44	-	2.32	93
D-Mannitol ^b	20.2	0.03	-	0.69	0.20	-	-	1.52	2.53	-	0.14	0.08	-	95
TMS ether of glucitol ^a	20.3	0.91	1.89	0.20	0.35	0.11	-	-	-	-	0.21	0.12	1.63	95
D-Pinitol, isomer ^a	20.6	0.12	-	0.09	-	0.10	-	1.80	-	0.14	-	0.06	-	70
Glucopyranose, isomer ^a	21.1	1.92	1.48	1.06	-	-	-	2.41	1.38	0.89	0.98	0.52	-	94
D-Glucose ^b	21.2	-	-	-	-	0.86	1.48	-	0.43	0.06	1.39	-	3.69	94
Phenolics		1.10	1.07	0.59	0.84	0.35	0.78	4.51	2.71	1.22	0.73	0.61	1.64	
Benzoic acid, 4-methoxy-TMS ester ^a	9.6	0.12	-	0.12	-	0.10	0.11	0.19	0.12	0.19	-	0.11	-	65
Hydroxytyrosol ^c	16.8	0.48	0.90	0.28	0.84	0.12	0.67	1.44	2.60	0.38	0.73	0.35	1.64	93
Ferulic acid TMS ^c	18.4	0.46	0.17	-	-	-	-	-	-	-	-	-	-	67
p-Trimethylsilyloxyphenyl ^a	19.7	0.03	-	0.13	-	0.11	-	0.78	-	0.19	-	0.02	-	89
TMS catecholactate ^a	35.3	-	-	-	-	-	-	1.93	-	-	-	0.14	-	55
Thymol.-beta.-d-glucopyranoside ^a	33.8	-	-	0.06	-	0.02	-	0.18	-	0.46	-	-	-	80

Note : B: Inner bark; OB: Outer bark (-): not detected

^aCompare with NIST library

^bCompare with Petersson (1969) and Medeiros and Simoneit (2007)

^cCompare with Pruestos and Komaitis (2013)

hydrophilic constituents. Fig. 3 showed chromatograms from the inner bark extracts of *P. merkusii* by derivatisation method (trimethylsilyl/TMS derivatives). The hydrophilic constituents (Table 2) in the bark samples can be grouped into nitrogenous compounds (NCs) (retention time 5-20 mins), sugars (ret. time 9-30

mins) and phenolics (ret. time 16-40 mins). The quantification of the constituents is shown in Table 2.

3.3.1. Nitrogenous compounds

NCs were dominant hydrophilic extractives in the barks of six *Pinus* species. NCs in the samples were

Table 3. Mass spectra of sugar TMS derivatives detected in the samples

Sugars	<i>m/z</i> of 8 fragments (% of relative abundance)							
Glycerol	205 (41)	191 (4)	175 (2)	147 (52)	133 (13)	103 (31)	75 (8)	73 (100)
Xylitol	422 (0.6)	319 (15)	307 (16)	217 (62)	147 (29)	117 (12)	103 (41)	73 (100)
D-Pinitol	522 (0.1)	318 (20)	260 (31)	217 (33)	191 (17)	147 (24)	103 (10)	73 (100)
D-Glucose	437 (0.6)	217 (20)	205 (22)	204 (99)	191 (42)	147 (24)	103 (10)	73 (100)
Glucopyranose	437 (0.4)	313 (12)	204 (83)	191 (42)	147 (19)	117 (20)	103 (7)	73 (100)
D-Mannitol	425 (1.4)	319 (54)	218 (13)	205 (34)	147 (33)	117 (19)	103 (28)	73 (100)

detected as TMS derivatives based on their similarity from the library. Their presences were already studied using derivatives GC-MS technique (Zarate *et al.*, 2016; Rohloff, 2015; Molyneux *et al.*, 2002). Higher quantities of NC were detected in the inner barks than in the outer bark samples but *P. insularis* was an exception. Monoamidomalonic acid and pyrazine were the major NCs in the samples. The inner bark of *P. merkusii* showed the highest NCs content (38.46%) while the lowest was found in *P. caribea* (9.6%). Normorphine was the only NC detected in great amounts in *P. merkusii* (5.66%) and it is also a potential chemotaxonomic marker among other species. The other TMS- NCs in the samples were N-acetylglutamine, glycine (amino acid), propylamine, serine (amino acid), thiadiazole and h-imidazole (biotin) which were detected by GC-MS via derivatisation (Zarate *et al.*, 2016; Rohloff, 2015), and most of them were amino NC.

The presence of amino NC in Pinus bark was consistent with studies of NCs in the xylem sap root of *P. serotina* as well as in the bark, wood, and foliage of *P. sylvestris* as amino compounds and glutamine (Barnes, 1962; Nordin *et al.*, 2001). These amino NCs of alkaloids could be considered due to their biological activities as reported in the study (Umezawa, 2001; Agustini *et al.*, 2014).

3.3.2. Sugars

The sugar compounds in the samples were identified

as TMS derivatives. The mass spectra of sugars have been compared with the mass spectra from previous studies (Medeiros and Simoneit, 2007; Petersson, 1969). For example, the sugar of glycerol, xylitol, d-pinitol, d-glucose, glucopyranose, and d-mannitol (Table 3) showed *m/z* 73 as the base peak in all spectra, and *m/z* 147 as the peak. Both peaks, *m/z* 73 and 147 characterised most of the sugar compounds which have more than one trimethylsilyloxy group (Petersson, 1969).

The findings showed that higher quantities of sugar compounds were found in the outer barks of *P. elliotii*, *P. caribea*, and *P. merkusii* than in their inner barks, but the reverse was the case with *P. oocarpa*, *P. montezumae*, and *P. insularis*. Indeed, the highest quantity of total sugar was detected in *P. merkusii* (32.58%) and the lowest, in *P. montezumae* (5.45%). D-pinitol, xylitol, and glycerol were the dominant sugars that were detected in the six samples, whereas d-psicopyranose, (isomer 2), glucopyranose, galactopyranose, d-mannitol, TMS ether of glucitol, glucopyranose, isomer and d-glucose were the minor components. These compounds were easily detected by GC-MS as TMS derivatives (Zarate *et al.*, 2016; Rohloff, 2015). The presence of higher sugar content in the inner bark than in the outer bark samples showed a trend that is similar to that of the bark of *P. loblolly* (Eberhardt, 2012).

3.3.3. Phenolics

There were higher concentrations of phenolics in

Hydrophilic Extracts of the Bark from Six *Pinus* Species

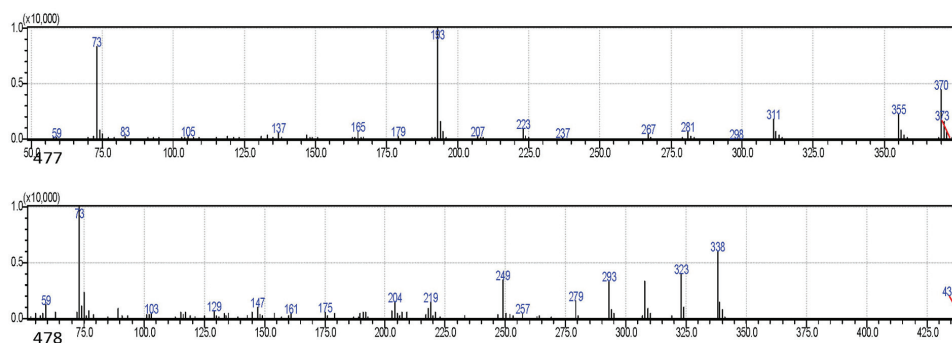


Fig. 4. Mass spectra of hydroxytyrosol and ferulic acid TMS from the bark of six *Pinus* species.

inner bark samples than in outer barks with the exception of *P. caribaea*, *P. oocarpa*, and *P. insularis*. The highest quantity of phenolics (4.51%) was shown by *P. merkusii* while *P. oocarpa* had the lowest (0.35%). Hydroxytyrosol was the major phenolic detected in the radial samples while p-trimethylsilyloxyphenyl was only detected in the inner bark samples. The phenolic of ferulic acid-TMS was found in *P. elliotii*, and catechol lactate-TMS was found in *P. merkusii* and *P. insularis*. The glycoside of thymol- β -d-glucopyranoside was detected in all inner bark samples except for *P. elliotii* and *P. insularis*. The appearance of this glycoside (sugar with monophenol) in inner barks revealed that phenolics were glycosylated. Previously, simple phenols, glycosides, and aromatic acids were reported in the bark of *P. nigra* by qualitative method (Hafizoğlu *et al.*, 2002) and also were isolated in the bark of *Cercidiphyllum japonicum* (Lee *et al.*, 2016), *Juglans mandshurica* (Li *et al.*, 2018). All phenolic compounds detected as TMS derivatives in the bark samples were estimated as monophenol (Fig. 4). Ferulic acid-TMS (MW: 338) and hydroxytyrosol (MW: 370) in these bark samples were identified by comparing their mass spectra in the literature (Pruestos and Komaitis, 2013).

Consistent with the previous study, this study revealed that the presence of both ferulic acid and hydroxytyrosol in the bark of *P. sylvestris* and *P.*

halepensis has anti-inflammatory and antimicrobial effects (Karonen *et al.*, 2004; Mohareb *et al.*, 2017). The phenolic compounds such as monophenolics and polyphenolics are the important constituents especially in the bark of *Pinus* species. The present results indicated that polyphenolics were not detected by GC-MS, thus, further work should be carried out on detecting polyphenolics by HPLC or other tools in the bark of the six *Pinus* species.

4. CONCLUSION

The quantity and composition of the hydrophilic extract that were derived from the barks of the six *Pinus* species were observed between the inner and outer barks. The quantities of ethanol and hot water soluble extracts in the outer bark were higher than those in the inner bark except for *P. elliotii*. The total phenols of outer bark samples were in higher concentrations than those of inner bark samples but the total flavanols measurement showed a reverse pattern. The quantities of Tannin-formaldehyde in the outer barks of the six *Pinus* species were in good correlation with that of total flavanols.

By GC-MS, the TMS derivatives of NCs, sugars, and phenolics were detected in higher amounts in the inner bark samples than in the outer bark samples. NCs

were the major group in the bark, followed by sugars, then monophenols. As the detection of constituents was merely conducted by library and some components showed relatively low similarity index levels, confirmation by the injection of standard components should be carried out in the future works. Furthermore, HPLC investigation would be useful in discovering the phenolics. Nevertheless, the high level of total phenols in the outer barks, total flavanols in the inner barks and several other important compounds that were detected as TMS derivatives in the samples suggests that the hydrophilic extractives of the barks of these families are potent to be biologically active.

REFERENCES

- Agustini, B.C., de Lima, D.B., Bonfim, T.M.B. 2014. Composition of amino acids and bioactive amines in common wines of Brazil, *Acta Scientiarum* 36: 225-233.
- Amalinei, R.L.M., Trifan, A., Cioanca, O., Miron, S.D., Mihai, C.T., Rotinberg, P., Miron, A. 2014. Polyphenol-rich extract from *Pinus sylvestris* L. bark chemical and antitumor studies, *Revista medico-chirurgicala a Societii de Medici si Naturalisti din lasi* 118(2): 551-557.
- Barnes, R.L. 1962. Glutamine synthesis and translocation in pine, *Plant Physiology* 37: 323-326.
- Cadiz-Gurerrea, M., Fernandez-Arroyo, S., Segura-Carretero, A. 2015. Pine bark and green tea concentrated extracts: antioxidant activity and comprehensive characterization of bioactive compounds by HPLC-ESI-QTOF-MS, *International Journal of Molecular Science* 15: 20382-20402.
- Diouf, P.N., Stevanovic, T., Cloutier, A. 2009. Antioxidant properties and polyphenol contents of *Trembling aspen* bark extracts, *Wood Science and Technology* 43(4): 457-470.
- Eberhardt, T.L. 2012. Impact of industrial source on the chemical composition of Loblolly pine bark, *Forest Product Journal* 62(7/8): 516-519.
- Fengel, D., Wegener, G. 1989. *Wood: Chemistry, Ultrastructure, Reactions; Constituents of Bark*. De Gruyter. Pp 240-267, Berlin, Germany.
- Hafizoğlu, H., Holmborn, B., Reunanen, M. 2002. Chemical composition of lipophilic and phenolic constituents of bark from *Pinus nigra*, *Abies bornmülleriana*, and *Castanea sativa*, *Holzforschung* 56: 257-260.
- Humphreys, F.R. 1956. Determination of tannin-formaldehyde in bark, *Social Leader Trade Chemist Journal* 40: 147-149.
- Karonen, M., Hämäläinen, M., Nieminen, R., Klika, K.D., Loponen, J., Ovcharenko, V.V., Moilanen, E., Pihlaja, K. 2004. Phenolic extractives from the bark of *Pinus sylvestris* L. and their effects on inflammatory mediators Nitric Oxide and Prostaglandin E₂, *Journal of Agriculture Food and Chemistry* 52: 7532-7540.
- Kofujita, H., ETTYU, K., Ota, M. 1999. Characterization of the major components in bark from five Japanese tree species for chemical utilization, *Wood Science and Technology* 33: 223-228.
- Krogell, J., Holmbom, B., Pranovich, A., Hemming, J., Willför, S. 2012. Extraction and chemical characterization of Norway spruce inner and outer bark, *Nordic Pulp and Paper Research Journal* 27: 6-17.
- Ku, C.S., Jang, J.P., Mun, S.P. 2007. Exploitation of Polyphenol-rich Pine Barks for Antioxidant Activity, *Journal of Wood Science* 53: 524-528.
- Lee, M.S., Min, J., Si, C.L., Bae, Y.S. 2016. Hydrolysable tannins from *Cercidiphyllum japonicum* bark, *Journal of the Korean Wood Science and Technology* 44(4): 559-570.
- Li, Z.J., Chen, S., Yang, X.H., Wang R., Min, H.J., Wu, L., Si, C.L., Bae, Y.S. 2018. Secondary metabolites with anti-complementary activity from the stem barks of *Juglans mandshurica* Maxim, *Journal of the Korean Wood Science and*

- Technology 46(2): 118-124.
- Masendra, Ashitani, T., Takahashi, K., Lukmandaru, G. 2018a. Lipophilic extractives of inner and outer barks from six different *Pinus* species grown in Indonesia, *Journal of Forestry Research* 29(5): 1329-1336.
- Masendra, Ashitani, T., Takahashi, K., Lukmandaru, G. 2018b. Triterpenoids and steroids from the bark of *Pinus merkusii* (Pinaceae), *BioResources* 13(3): 6160-6170.
- Medeiros, P.M., Simoneit B.R.T. 2007. Analysis of sugars in environmental samples by gas chromatography-mass spectrometry, *Journal of Chromatography A* 1141: 271-278.
- Miranda, I., Mirra, I., Gominho, J., Pereira, H. 2017. Fractioning of bark of *Pinus pinea* by milling and chemical characterization of different fraction, *Maderas: Ciencia y Tecnologia* 19(2): 185-194.
- Mohareb, A.S.O., Kherallah, I.E.A., Badawy, M.E.I., Salem, M.Z.M., Yousef, H.A. 2017. Chemical composition and activity of bark and leaf extracts of *Pinus halepensis* and *Olea europaea* grown in Al-Jabel Al-Akhdar Region, Libya against some plant phytopathogens, *Journal of Applied Biotechnology and Bioengineering* 3(3): 67-78.
- Molyneux, R.J., Gardner, D.R., James, L.F., Colegate, S.M. 2002. Polyhydroxy alkaloids: Chromatographic analysis, *Journal of Chromatography A* 967: 57-74.
- Morita, S., Yazaki, Y., Johnson, G.C. 2001. Mycelium growth promotion by water extractives from the inner bark of radiata pine (*Pinus radiata* D. Don), *Holzforschung* 55: 155-158.
- Mun, S.P. 2014. Efficacy and reusability of commercial adsorbent for isolation of proanthocyanidin from hot water extract of *Pinus radiata* bark, *Journal of the Korean Wood Science and Technology* 42(2): 207-213.
- Mun, S.P., Nicholas, D.D. 2017. Effect of proanthocyanidin-rich extracts from *Pinus radiata* bark on termite feeding deterrence, *Journal of the Korean Wood Science and Technology* 45(6): 720-727.
- Nordin, A., Uggla C., Näsholm, T. 2001. Nitrogen forms in bark, wood and foliage of nitrogen-fertilized *Pinus sylvestris*, *Tree Physiology* 21: 59-64.
- Nunes, E., Quilhó, T., Pereira, H. 1999. Anatomy and chemical composition of *P. pinea* L. bark, *Annals of Forest Science* 56: 479-484.
- Petersson, G. 1969. Mass spectrometry of alditol as trimethylsilyl derivatives, *Tetrahedron* 25: 4437-4443.
- Proestos, C., Komaitis, M. 2013. Analysis of naturally occurring phenolic compounds in aromatic plants by RP-HPLC coupled to diode array detector (DAD) and GC-MS after silylation, *Foods* 2: 90-99.
- Richard, T., Broadhurst, B., Willian, J.T. 1978. Analysis of condensed tannins using acidified vanillin, *Journal of the Science of Food and Agriculture* 29: 788-794.
- Rohloff, J. 2015. Analysis of phenolic and cyclic compounds in plant using derivatization techniques in combination with GC-MS-based metabolite profiling, *Molecules* 20: 3431-3462.
- Umezawa, T. 2001. Wood and cellulosic chemistry: Chemistry of extractives. Hon, D.N.,-S., and Shiraishi, N., New York, pp 213-241.
- Yesil-Celiktas, O., Ganzera, M., Akgun, I., Sevimli, C., Kormaz, K.S., Bedir, E. 2009. Determination of Polyphenolic Constituents and Biological Activities of Bark Extracts from different *Pinus* Species, *Journal of the Science of Food and Agriculture* 89: 1339-1345.
- Zarate, E., Boyle, V., Rupprecht, U., Green, S., Villas-Boas, S.G., Baker, P., Pinu, F.R. 2016. Fully automated trimethylsilyl (TMS) derivatisation protocol for metabolite profiling by GC-MS, *Metabolites* 1-13.