



Analysis of Essential oil, Quantification of Six Glycosides, and Nitric Oxide Synthase Inhibition Activity in *Caryopteris incana*

Agung Nugroho¹, Sang Kook Lee², Donghwa Kim², Jae Sue Choi³, Kyoung-Sik Park⁴,
Byong-Min Song⁵, and Hee-Juhn Park^{6,*}

¹Department of Agro-industrial Technology, Lambung Mangkurat University, Banjarbaru 70714, Indonesia

²College of Pharmacy, Seoul National University, Seoul 08826, Korea

³Department of Food and Nutrition, Pukyong National University, Busan 48513, Korea

⁴Department of Oriental Medicine, Sangji University, Wonju 26339, Korea

⁵Department of Forest Science, Sangji University, Wonju 26339, Korea

⁶Department of Pharmaceutical Engineering, Sangji University, Wonju 26339, Korea

Abstract – *Caryopteris incana* (Verbenaceae) has been used to treat cough, arthritis, and eczema in Oriental medicine. The two fractions (CHCl₃- and BuOH fractions) and the essential oil of the plant material were subjected to the inducible nitric oxide synthase (iNOS) assay. The IC₅₀ of the CHCl₃ fraction and the essential oil on LPS-induced macrophage RAW 264.7 cells were 16.4 µg/mL and 23.08 µg/mL, respectively. On gas chromatography (GC)-mass spectroscopy (MS) analysis, twenty-five components representing 85.5% amount of total essential oil were identified. On the chromatogram, three main substances, *trans*-pinocarveol, *cis*-citral, and pinocarvone, occupied 18.8%, 13.5% and 18.37% of total peak area. Furthermore, by HPLC-UV analysis, six compounds including one iridoid (8-*O*-acetylharpagide)- and five phenylethanoid glycosides (caryopteroside, acteoside, phlinoside A, 6-*O*-caffeoylphlinoside, and leucosceptoside A) isolated from the BuOH fraction were quantified. The content of six compounds were shown as the following order: caryopteroside (162.35 mg/g) > 8-*O*-acetylharpagide (93.28 mg/g) > 6-*O*-caffeoylphlinoside (28.15 mg/g) > phlinoside (22.60 mg/g) > leucosceptoside A (16.87 mg) > acteoside (7.05 mg/g).

Keywords – *Caryopteris incana*, glycoside, HPLC, inducible nitric oxide synthase, Verbenaceae

Introduction

Although the nitric oxide (NO) plays a physiological role, which is necessary for vasodilation, its excess production induces several pathophysiological states.¹ Excess production of NO can combine with superoxide anion radical, which causes cardiovascular disease, asthma, or arthritis.^{2,3} The inducible nitric oxide synthase (iNOS) plays a key role in the production of NO for the pathophysiological state. Recently, assays to search for the compounds with the inhibitory effect on NO formation are often used to test anti-inflammatory activity. The inhibitory effect on NO formation is frequently measured in lipopolysaccharide (LPS)-induced mouse macrophage cells. In the present study, this assay was performed in LPS-induced macrophage RAW 264.7 cells.

Caryopteris incana (Verbenaceae) is a perennial herb, which is used to treat cough, arthritis, and eczema in Oriental medicinal society.^{4,5} The constituents belonging to iridoid glycosides, phenylethanoid glycosides,^{5,6} and diterpenoids⁶ have been reported. In this study, the MeOH extract was divided into two fractions, the CHCl₃ fraction and BuOH fraction, the former contains less polar substances and the latter does more polar ones. Since *C. incana* is a very flavoring plant, the essential oil was also prepared from this plant material to test an iNOS assay and to analyze the constituents.

When the inhibition activity on iNOS were tested, the CHCl₃ fraction and essential oil significantly inhibited the production of NO, but the BuOH fraction did not. Because the constituents of the essential oil will share those of the CHCl₃ fraction, the essential oil was analyzed by gas chromatography (GC)-mass spectroscopy (MS). Furthermore, the six glycosides of an iridoid glycoside (8-*O*-acetylharpagide) and five phenylethanoid glycosides (caryopteroside, acteoside, phlinoside, 6-*O*-caffeoylphli-

*Author for correspondence
Hee-Juhn Park, Ph.D., Department of Pharmaceutical Engineering,
Sangji University, Wonju 26339, Republic of Korea.
Tel: +82-33-730-0564; E-mail: hjpark@sangji.ac.kr

noside, leucosceptoside A) were quantitatively analyzed using an HPLC method.

Experimental

Instruments and reagents – Capillary gas chromatography (GC)-mass spectrometry (MS) used for analysis of the essential oil was an MSD 5975N (Agilent technologies, USA) equipped with HP6890 GC (Agilent technologies, USA) and HP-7683 auto-sampler (Agilent technologies, USA). GC column used for GC-MS analysis was 5MS (30 m × 0.25 mm i.d., 0.25 μm film thickness)

HPLC system consisting of two Prostar 210 pumps, a Prostar 325 UV-Vis detector, and a Shiseido Capcell PAK C18 column (5 μm, 4.6 mm × 250 mm) equipped with MetaTherm temperature controller were used for quantification. The HPLC grade solvent used for the mobile phase was purchased from J.T. Baker (Philisburg, NJ, USA). The stationary phase column chromatography used for isolation was silica gel 60 (70–230 mesh, Merck, Germany) and Diaion HP-20 (Mitsubishi Chemical Co., Japan).

Plant material – The leaves of *C. incana* was collected on August in Wonju, Gangwon-do, Korea and then dried. The dried leaves were cut prior to extraction. This plant was identified by Prof. Byong-Min Song (Department of Forest Science, Sangji University). A voucher specimen (natchem-#92) was deposited in the Laboratory of Natural Products Sciences, Department of Pharmaceutical Engineering, Sangji University.

Steam distillation – To extract essential oil from the plant material, 300 g of the plant material and distilled for 3 h in the steam distillation apparatus. The distilled suspension was partitioned with diethyl ether three times, and further dehydrated with anhydrous sodium sulfate. Drying of the diethyl ether-soluble portion led to the preparation of essential oil (0.57 g, 0.58 mL). Density of this essential oil was calculated to be 0.982 g/mL.

Measurement of GC-MS – GC chromatography was performed at 250 °C of the injection port temperature with a splitless mode (injection mode) and 1 μL of injection volume. Helium as the carrier gas was flowed at 1.0 mL/min. Column temperature was increased as the programmed method. Initial temperature was maintained at 60 °C for 1.0 min. This temperature was increased to 130 °C at the rate of 20 °C/min, then to 190 °C at 5 °C/min, and finally increased to 240 °C at 20 °C/min. The final temperature was maintained for 1 min. In MS, the 70 eV was used for ionization of molecules as the electron impact mode. Transfer line temperature was 280 °C and solvent delay time was 2 min. Measurement of mass

spectra was performed with scan mode, where acquisition mode was m/z 40–500. Identification of molecules was performed by matching each spectrum with that of internal library (Wiley W9NO8 program) and confirmed at more than 90% quality ratio.

The number (1–15) of compounds of which structures were identified were given.

Extraction and fractionation – The plant material of the leaves of *C. incana* (440 g) was extracted with MeOH under reflux for 5 h three times. The extracted solution was filtered and evaporated on a rotatory evaporator under reduced pressure. The concentrated extract was further freeze-dried to give a MeOH extract (130.0 g). The MeOH extract (128 g) was suspended in H₂O and then partitioned with CHCl₃ three times. A CHCl₃-soluble portion was concentrated to dryness to give a CHCl₃ fraction (19 g). A residual aqueous layer was partitioned with BuOH three times. A BuOH-soluble portion was concentrated *in vacuo* and then freeze-dried to give a BuOH fraction (48.1 g). The aqueous layer was dried *in vacuo* and subjected to freeze-drying to give a H₂O fraction (67.3 g).

After the solvent-fractionation, successive column fractionation was performed using a Diaion HP-20 column. The BuOH fraction (40.3 g) was subjected to Diaion HP-20 column chromatography. This column was eluted with 1.0 L to remove sugars or ionic substances. Successive elution was conducted with each 1.0 L solvent of 25% MeOH, 50% MeOH, 75% MeOH, and 100% MeOH, every eluted solution was concentrated to produce a 25% MeOH extract (5.3 g), 50% MeOH extract (1.9 g), 75% MeOH extract (8.3 g), and 100% MeOH (6.2 g) extract.

Cell culture – Mouse macrophage RAW 264.7 cells, obtained from the American Type Culture Collection (ATCC, Rockville, MD, USA), were cultured in DMEM supplemented with 10% heat-inactivated fetal bovine serum (FBS) and antibiotics-antimycotics (PSF; 100 units/ml penicillin G sodium, 100 ng/mL streptomycin, and 250 ng/mL amphotericin B). The cells were maintained at 37 °C under a humidified atmosphere containing 5% CO₂.

Cell viability assay – MTT solution (final concentration of 500 μg/mL) was added to each well and incubated for 4 h at 37 °C. The culture media was removed, and dimethyl sulfoxide (DMSO) was added. The absorbance was measured at 570 nm, and percent survival was determined by comparison with a control group (LPS+).

iNOS assay – RAW 264.7 cells were cultured in 10% FBS-DMEM, and seeded in 24-well plates (2 × 10⁵ cells/mL). The next day, culture media was changed to 1% FBS-DMEM and samples were treated. After 1 h, 1 μg/

mL of LPS was added, except LPS- control, to stimulate NO production. Cells were incubated for an additional 18 h and the amount of NO production in culture media was determined by Griess reaction. Briefly, 180 μ L of Griess reagent (0.1% *N*-(1-naphthyl) ethylenediamine dihydrochloride in H₂O and 1% sulfanilamide in 5% H₃PO₄) was added to 100 μ L of culture media. Then absorbance was measured at 540 nm, and nitrite concentration was determined by comparison with a sodium nitrite standard curve. Percent inhibition was calculated using following formula: $[1 - (\text{NO level of test samples} / \text{NO levels of vehicle-treated control})] \times 100$. The IC₅₀ value, the sample concentration resulting in 50% inhibition of NO production, was calculated through non-linear regression analysis using Table Curve 2D v5.01 (Systat Software Inc., San Jose, CA, USA).

Isolation – The 75% fraction (10.0 g) was chromatographed over silica gel column (SiO₂ 180 g, Φ 4.5 cm \times 30 cm) using the eluent CHCl₃-MeOH-H₂O (65 : 35 : 10, lower phase) and collected by each 50 ml to give 35 aliquots (#1 - #35). These 35 aliquots were checked on TLC visualized by UV light and 50% H₂SO₄, and then combined into five groups. The six groups named CI-1 (#6 - #8), CI-2 (#12 - #14), CI-3 (#15 - #16), CI-4 (#21 - #23), CI-5 (#26 - #29), and CI-6 (#29 - #35) were concentrated to afford compounds **26** - **31**, respectively.

Compound 26 (8-O-acetylharpagide) – UV λ_{max} (MeOH) nm (log ϵ): 203 (3.83); IR ν_{max} (KBr) cm⁻¹: 3357 (broad, O-H), 2914 (C-H), 1712 (C=O), 1653 (C=C), 1375 (CH₃), 1237 (C-O), 1117, 1077 (Glycoside C-O); ¹H-NMR (600 MHz, CD₃OD) and ¹³C-NMR (150 MHz, CD₃OD) δ : literature.⁵

Compound 27 (caryopteriside) – UV λ_{max} (MeOH) nm (log ϵ): 268 (4.06), 329 (4.14); IR ν_{max} (KBr) cm⁻¹: 3403 (broad, O-H), 2940, 2883 (C-H), 1724, 1708, 1687 (C=O), 1604, 1517 (aromatic C=C), 1454, 1369, 1273 (phenolic C-O), 1175 (tertiary C-O), 1074 (secondary C-O), 1034 (glycoside C-O), 849, 815; ¹H-NMR (600 MHz, CD₃OD) and ¹³C-NMR (150 MHz, CD₃OD) δ : literature.⁴

Compound 28 (acteoside) – UV λ_{max} (MeOH) nm (log ϵ): 328 (4.11); IR ν_{max} (KBr) cm⁻¹: 3403 (broad, O-H), 2931, 2886 (C-H), 1698 (C=O), 1631 (olefinic C=C), 1604, 1516 (aromatic C=C), 1445, 1366, 1280 (phenolic C-O), 1161 (tertiary C-O), 1071 (secondary C-O), 1037 (glycoside C-O), 814; ¹H-NMR (600 MHz, CD₃OD) and ¹³C-NMR (150 MHz, CD₃OD) δ : literature.¹⁰

Compound 29 (leucoseptoside A) – UV λ_{max} (MeOH) nm (log ϵ): 313 (4.28); IR ν_{max} (KBr) cm⁻¹: 3392 (broad, OH), 2931 (CH), 1705 (C=O), 1634 (olefinic C=C), 1604, 1471 (aromatic C=C), 1373 (CH₃), 1365, 1235

(phenolic C-O), 1169 (tertiary C-O), 1135 (secondary C-O), 1073 (glycoside C-O), 834; ¹H-NMR (600 MHz, CD₃OD) and ¹³C-NMR (150 MHz, CD₃OD) δ : literature.¹¹

Compound 30 (phlinoside A) – UV λ_{max} (MeOH) nm (log ϵ): 323 (4.21); IR ν_{max} (KBr) cm⁻¹: 3404 (broad, O-H), 2926, 2885 (C-H), 1699 (C=O), 1631 (olefinic C=C), 1604, 1517 (aromatic C=C), 1445, 1366, 1274 (phenolic C-O), 1167 (tertiary C-O), 1073 (secondary C-O), 1039 (glycoside C-O), 815; ¹H-NMR (600 MHz, CD₃OD) and ¹³C-NMR (150 MHz, CD₃OD) δ : literature.¹⁰

Compound 31 (6-O-caffeoylphlinoside) – UV λ_{max} (MeOH) nm (log ϵ): 332 (3.98); IR ν_{max} (KBr) cm⁻¹: 3384 (broad, O-H), 2934, 2891 (C-H), 1698 (C=O), 1631 (olefinic C=C), 1604, 1519 (aromatic C=C), 1445, 1366, 1281 (phenolic C-O), 1162 (tertiary C-O), 1115 (secondary C-O), 1070 (primary C-O), 1039 (glycoside C-O), 815; ¹H-NMR (600 MHz, CD₃OD) and ¹³C-NMR (150 MHz, CD₃OD) δ : literature.⁵

Preparation of standard- and sample solutions – The stock solution (1000 μ g/mL) was prepared by dissolving each compound in MeOH and preserved under the temperature of 4 °C. To prepare working standard solutions, the stock solution was serially diluted. Regression equations were determined by calculation of the peak area (*y* axis) at six concentrations (*x* axis, μ g/ml). Sample solutions were prepared by dissolving the MeOH extract, BuOH fraction, the 25%, 50%, 75%, and 100% MeOH fraction in MeOH. These solutions were filtered through disposable syringe filter unit (0.50 μ m, Sismic-25JP Advantec, Japan) prior to injection.

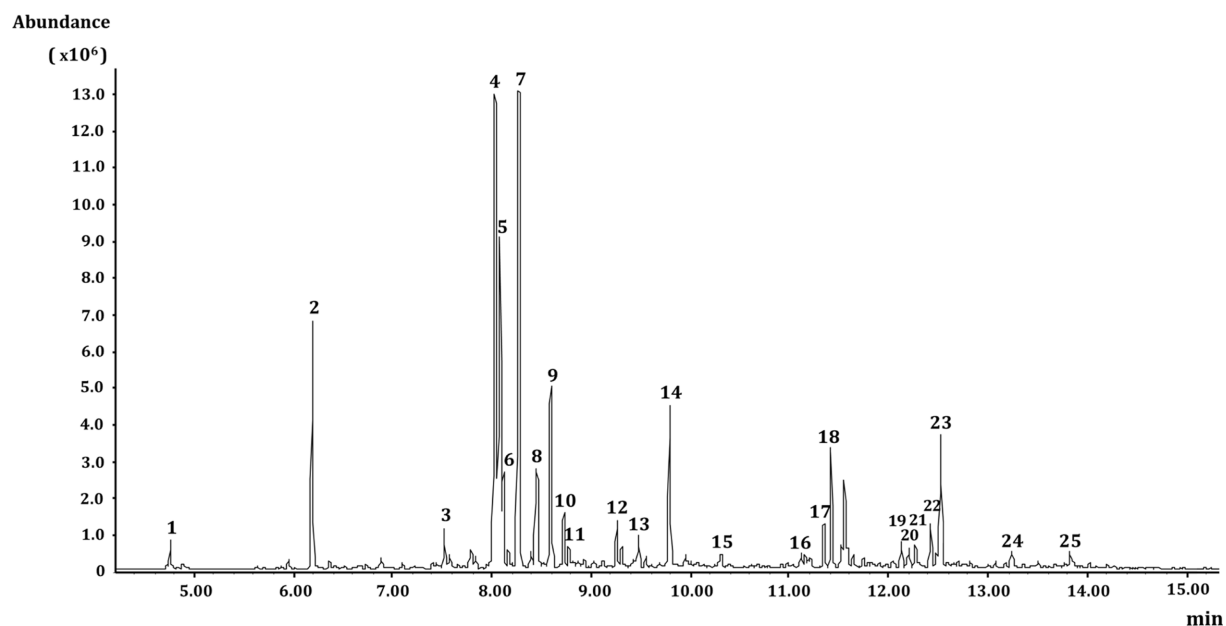
HPLC analytical method – Two solvents, solvent A (H₂O with 0.05% acetic acid, *v/v*) and solvent B (MeOH) were used in this method. The linear gradient elution of the solvents was programmed as follows: 0 – 20 min (15 \rightarrow 60% B), 20 – 21 min (60 \rightarrow 100% B), 21 – 25 min (100% B), 25 – 27 min (100 \rightarrow 15% B), and 27 – 30 min (15% B). The flow rate and column temperature was set constantly at 1.0 mL/min and 40 °C, respectively. The detection wavelength was fixed at 205 nm. The analytical method was validated in terms of linearity and sensitivity, referring to the guidance of international conference on harmonization (ICH). The *R*² value was used to assess the linearity of regression equation. LOD (limit-of-detection) and LOQ (limit-of-quantification) was used as the measure of sensitivity, where LOD and LOQ were determined at signal-to ratios (S/N ratio) of 3 and 10, respectively.

Result and Discussion

As shown in Table 1, the CHCl₃ fraction and the

Table 1. Effect of the essential oil and CHCl₃ fraction on LPS-induced NO production and cell viability

Concentration ($\mu\text{g/mL}$)	% NO inhibition		Cell viability (% of LPS+)	
	Essential oil	CHCl ₃ fraction	Essential oil	CHCl ₃ fraction
5	23.09	11.96	97.06	94.09
10	28.70	31.75	93.73	106.74
20	44.55	61.99	99.97	102.69
40	78.15	88.46	118.25	106.41
80	99.03	94.87	113.85	19.73

**Fig. 1.** GC chromatogram of the essential oil of *C. incana*.

essential oil greatly inhibited iNOS activities in LPS-activated macrophage RAW 264.7 cells, demonstrating that the two samples have anti-inflammatory activities. However, the BuOH fraction and its five compounds including an iridoid (8-*O*-acetylharpagide)- and five phenylethanoid glycosides (caryopteriside, acteoside, phlinoside, 6-*O*-caffeoylphlinoside, and leucosceptoside A) had no activity (data not shown). The IC₅₀s on the iNOS activity were 16.4 (CHCl₃ fraction) and 23.8 $\mu\text{g/mL}$ (essential oil), respectively. Furthermore, the CHCl₃ fraction was cytotoxic at the 80 $\mu\text{g/mL}$ concentration while the essential oil was not, indicating that the essential oil may be more advantageous for the anti-inflammatory activity. Since the essential oil shares volatile substances with the CHCl₃ fraction containing less polar substances, this oil was analyzed by GC-MS. Twenty-five components were identified by matching each mass spectrum with the data of MS library. Of compounds 1–14, twelve peaks besides compounds 1 and 2 belonged to monoterpenes.

From the peak 15 (α -copaene) at 10.31 min (t_R) to 25 (α -bisabolene epoxide) at 13.85 min on the GC chromatogram (Fig. 2), eleven compounds were sesquiterpenes. Considering the peak area, the amount of sesquiterpenes was relatively low compared to those of monoterpenes.

Most compounds were cyclic terpenes except for the two simple alcohols (3-hexen-1-ol, 1-octen-3-ol) and the two acyclic monoterpenes (linalool and *cis*-citral). Cyclic monoterpenes were shown including 1-*trans*-pinocarveol, *cis*-citral, β -phellandren-8-ol, 2(10)-pinen-3-one, terpendiol I, myrtenol, 1-verbenone, *trans*(+)-carveol, terpendiol II, 1,3,8-*p*-menthatriene, and (+)-myrtenyl acetate. The identification was confirmed by matching each spectrum with the database of the Wiley 10th version library. In Table 2, the molecular ion peak, base peak (100% relative intensity) and other significant peaks were shown. Of the 25 peaks, three major components were *trans*-pinocarveol (4, 18.78%), *cis*-citral (5, 13.53%), pinocarvone (7, 18.37%) (Fig. 1), where the percentage of peak area was shown in

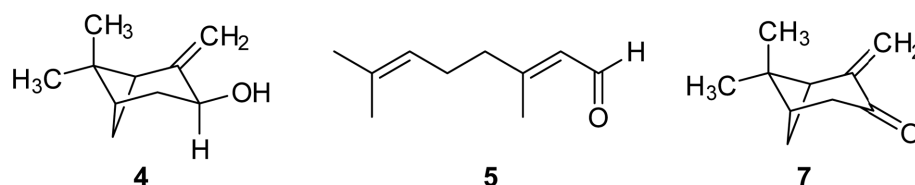


Fig. 2. Structure of three main monoterpenoids 4, 5, and 7 identified from the essential oil of *C. incana*.

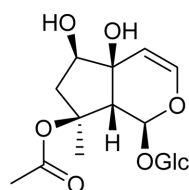
Table 2. Identification of the components in the essential oil of *C. incana*

Compound (peak number)	t_R (min)	M^+ m/z (%)	Fragment ion m/z (%)	Peak area (%)
3-Hexen-1-ol (1)	4.765	100.1 [C ₆ H ₁₂ O] ⁺ (2.5)	82.1 (40.0), 67.1 (82.5), 55.1 (41.0), 41.1 (100)	0.81
1-Octen-3-ol (2)	6.179	128.1 [C ₈ H ₁₈ O] ⁺ (0.0)	99.1 (42.9), 72.1 (20.0), 57.1 (100)	7.43
Linalool (3)	7.532	154.1 [C ₁₀ H ₁₈ O] ⁺ (1.4)	136.1 (8.8), 93.1 (79.4), 71.1 (100)	1.12
1- <i>trans</i> -Pinocarveol (4)	8.028	152.1 [C ₁₀ H ₁₆ O] ⁺ (3.3)	134.1 (33.5), 119.1 (63.3), 92.1 (100)	18.78
<i>cis</i> -Citral (5)	8.082	152.1 [C ₁₀ H ₁₆ O] ⁺ (2.9)	94.1 (26.5), 69.1 (85.3), 41.1 (100)	13.53
β-Phelladren-8-ol (6)	8.118	152.1 [C ₁₀ H ₁₆ O] ⁺ (2.7)	119.1 (27.8), 94.1 (100), 79.1 (80.1)	1.38
Pinocarvone (7)	8.269	150.1 [C ₁₀ H ₁₄ O] ⁺ (12.5)	135.1 (28.1), 108.1 (62.5), 79.1 (100)	18.37
Terpendiol I (8)	8.475	170.1 [C ₁₀ H ₁₈ O ₂] ⁺ (0.0)	82.1 (100), 76.1 (75.0), 43.1 (68.8)	0.62
Myrtenol (9)	8.596	152.1 [C ₁₀ H ₁₆ O] ⁺ (4.4)	108.1 (26.5), 79.1 (100), 41.0 (44.1)	1.91
1-Verbenone (10)	8.728	150.1 [C ₁₀ H ₁₄ O] ⁺ (36.4)	135.0 (72.7), 107.1 (100), 80.1 (27.3)	5.82
<i>trans</i> (+)-carveol(11)	8.783	152.1 [C ₁₀ H ₁₆ O] ⁺ (8.3)	137.0 (11.1), 109.1 (100), 84.1 (11.1)	1.78
Terpendiol II (12)	9.260	170.1 [C ₁₀ H ₁₆ O] ⁺ (0.0)	137.1 (7.3), 67.1 (100), 43.1 (87.8)	2.31
1,3,8-p-menthatriene (13)	9.478	134.1 [C ₁₀ H ₁₄] ⁺ (27.3)	119.1 (100), 91.1 (27.2), 65.0 (6.1)	1.37
(+)-Myrtenyl acetate (14)	9.786	194.1 [C ₁₂ H ₁₈ O] ⁺ (0.0)	152.0 (4.9), 119.1 (53.7), 91.0 (100)	4.75
α-Copaene (15)	10.316	204.1 [C ₁₅ H ₂₄] ⁺ (16.2)	189.1 (5.4), 161.1 (97.3), 119.1 (100)	0.16
γ-Cadinene (16)	11.150	204.1 [C ₁₅ H ₂₄] ⁺ (23.1)	189.1 (2.6), 161.0 (100), 105.1 (25.6)	0.35
γ-2-Cadinene (17)	11.349	204.1 [C ₁₅ H ₂₄] ⁺ (26.3%)	161.1 (100), 119.1 (39.5), 41.0 (78.9)	0.34
δ-Cadinene (18)	11.567	204.1 [C ₁₅ H ₂₄] ⁺ (40.5)	189 (18.9) [M-CH ₃] ⁺ , 161.1 (100), 119.1 (78.3)	1.07
β-Copaene-4α-ol (19)	12.135	220.1 [C ₁₅ H ₂₄ O] ⁺ (59.5)	159.1 (100), 131.1 (40.5), 91.0 (54.1)	0.20
α-Campholenal (20)	12.213	152.1 [C ₁₀ H ₁₆ O] ⁺ (16.7%)	137.1 (0.1) [M-CH ₃] ⁺ , 108.1 (100), 67.1 (25.0)	0.19
Ledol (21)	12.274	222.1 [C ₁₅ H ₂₆ O] ⁺ (2.7%)	189.1 (10.8), 161.1 (16.2), 43.1 (100)	0.26
α-Cedrene (22)	12.425	204.1 [C ₁₅ H ₂₄] ⁺ (21.6%)	161.1 (18.9), 119.1 (100), 91.1 (40.5)	0.33
τ-Muurodol (23)	12.521	222.1 [C ₁₅ H ₂₆ O] ⁺ (5.4%)	204.0 (37.8), 161.0 (51.4), 43.0 (100)	1.43
Caryophyllene epoxide (24)	13.234	220.1 [C ₁₅ H ₂₄ O] ⁺ (2.9%)	109.1 (34.3), 79.1 (42.9), 43.1 (100)	0.17
α-Bisabolene epoxide (25)	13.845	220.1 [C ₁₅ H ₂₄ O] ⁺ (2.8%)	133.0 (11.4), 109.1 (42.9), 43.0 (100)	0.23

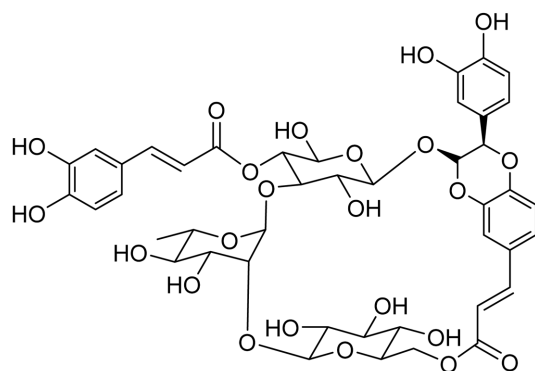
the parenthesis. Although a number of peaks of essential oils are shown in the chromatogram, a few compounds usually occupies predominant peak area of the compounds. Therefore, the essential oil of *C. incana* could be used based on the high percentage of *trans*-pinocarveol (4), *cis*-citral (5), and pinocarvone (7). Regarding sesquiterpenes, the eleven compounds including α-copaene, γ-cadinene, γ-2-cadinene, δ-cadinene, β-copaene-4α-ol, α-campholenal, ledol, α-cedrene, τ-muurodol, caryophyllene epoxide, and α-bisabolene epoxide were identified. The 25 compounds identified in this study represented 85.5% quantity of the total essential oil.

The BuOH fraction and its isolates of the glycosides did not inhibit NO formation in LPS-activated macrophage 264.7 cells. Since these glycosides could be active in other assays through the possible hydrolysis in the living system, the quantitative analysis of the phenolic glycosides were attempted using an HPLC method. The structure of six compounds were 8-*O*-acetylharpagide,⁵ caryopteriside,⁴ acteoside,¹⁰ phlinoside,⁵ 6-*O*-caffeoylphlinoside,⁵ and leucosceptoside A¹¹ were identified by comparisons of ¹H- and ¹³C-NMR spectroscopic data with literatures. One is an iridoid glycoside, and the other five are phenylethanoid glycosides, as shown in Fig. 3. Diaion HP-20 is the

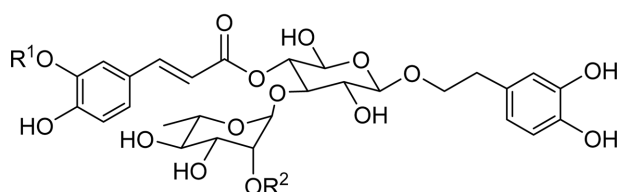
stationary phase with a structure of a spherical porous particle consisting of polystyrene polymers. In the present study, the HPLC analysis on six glycosides was performed



26 (8-*O*-Acetylharpagide)



27 (Caryopteroside)



- 28** : R₁=CH₃, R₂=H (Leucosceptoside A)
29 : R₁=R₂=H (Acteoside)
30 : R₁=H, R₂=β-D-glucopyranosyl (phlinoside A)
31 : R₁=H, R₂=6-*O*-caffeoyl-β-D-glucopyranosyl (6-*O*-caffeoylphlinoside)

Fig. 3. Structure of compounds **26** – **31** isolated from the BuOH fraction.

in the MeOH extract, CHCl₃- and BuOH fractions, and each fractions eluted with MeOH-H₂O solvents over a Diaion HP-20 column (Fig. 4). Retention times of six glycosides were shown in Table 3. The wavelength of 205 nm was chosen because only 8-*O*-acetylharpagide is not sensitive at 280 nm and 360 nm. Each regression equation was established after measuring the peak area at every six concentration ($n = 4$). The R^2 values more than 0.999 in the range of 31.25 – 1000.0 μg/mL established the linearity of the six equations. Every value of LOD and LOQ was sufficiently low indicating that they are very sensitive for the detection and quantification. As shown in Table 4, the content of six compounds were determined in the MeOH extract as the following order: caryopteroside (162.35 mg/g) > 8-*O*-acetylharpagide (93.28 mg/g) > 6-*O*-caffeoylphlinoside (28.15 mg/g) > phlinoside A (22.60 mg/g) > leucosceptoside A (16.87 mg) > acteoside (7.05 mg/g). These substances were quantitatively higher in the BuOH fraction than in the CHCl₃ fraction. In particular, 8-*O*-acetylharpagide was very rich (86.4%), but other five substances were not detected in the 25% MeOH fraction. In addition, caryopteroside occupied 11.2% of the 75% MeOH fraction. However, the quantity of acteoside and phlinoside was relatively low. In spite of no inhibition of the six glycosides on NO formation, other biological activities of them have been reported. Therefore, these analytical data will be useful for further research of *C. incana*.

In conclusion, the essential oil obtained from *C. incana* inhibited NO formation in macrophage 264.7 cells. GC-MS analysis of the essential oil led to the identification of 25 volatile substances and the finding of three main substances, *trans*-pinocarveol (**4**, 18.78%), *cis*-citral (**5**, 13.53%), and pinocarpone (**7**, 18.37%). Furthermore, the high content of caryopteroside (162.35 mg/g), 8-*O*-acetylharpagide (93.28 mg/g), and 6-*O*-caffeoylphlinoside (28.15 mg/g) were also elucidated in this plant by HPLC

Table 3. Linearity of standard curves and limits of detection and quantification for the standard compounds

Compound	t _R (min)	Calibration equation (linear model) ^a	Linear range (μg/mL)	R ² ^b	LOD ^c (μg/mL)	LOQ ^d (μg/mL)
8- <i>O</i> -Acetylharpagide (26)	12.62	$y = 159.50x + 117.91$	31.25 - 1000.0	0.999	1.77	5.88
Caryopteroside (27)	18.42	$y = 221.05x + 86.07$	31.25 - 1000.0	0.999	1.42	4.73
Acteoside (29)	15.05	$y = 228.41x + 95.77$	31.25 - 1000.0	0.999	1.33	4.43
Phlinoside A (30)	18.80	$y = 106.98x + 70.95$	31.25 - 1000.0	0.999	3.08	10.24
6- <i>O</i> -caffeoylphlinoside (31)	17.22	$y = 424.99x + 143.02$	31.25 - 1000.0	0.999	0.61	2.02
Leucosceptoside A (28)	20.11	$y = 132.15x + 84.07$	31.25 - 1000.0	0.999	2.39	7.96

^ay, peak area at 254nm; x, concentration of the standard (μg/mL); ^bR², correlation coefficient for 6 data points in the calibration curves (n = 4); ^cLOD, limit of detection (S/N = 3); ^dLOQ, limit of quantification (S/N = 10).

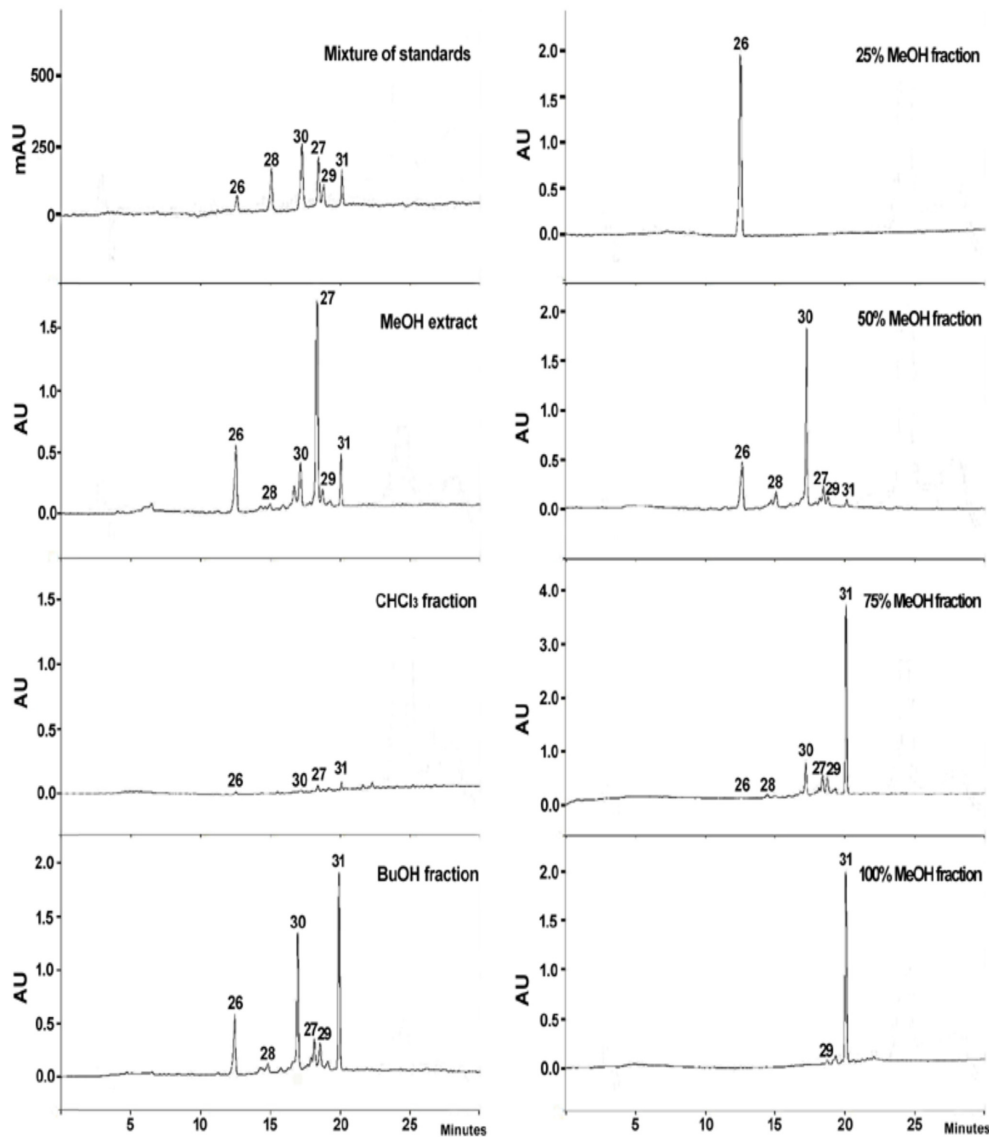


Fig. 4. HPLC chromatograms of MeOH extract of *C. incana* and its BuOH fraction, CHCl_3 fraction, and four fractions chromatographed from the BuOH fraction.

Table 4. Content of six compounds in the MeOH extract of *C. incana* and its BuOH fraction, CHCl_3 fraction, and four fractions chromatographed from the BuOH fraction

Extract / fractions	Analytes						Total
	8-O-acetylharpagide (26)	Caryopteriside (27)	Acteoside (29)	Phlinoside A (30)	6-O-caffeoylphlinoside (31)	Leucosceptoside A (28)	
MeOH extract	93.28	162.35	7.05	22.60	28.15	16.87	330.03
CHCl_3 fraction	7.69	8.49	-	-	1.11	5.03	22.32
BuOH fraction	215.78	13.75	10.83	26.91	97.76	110.17	475.20
25% MeOH fr.	864.84	-	-	-	-	-	864.84
50% MeOH fr.	316.87	54.72	77.31	80.53	264.93	12.63	806.99
75% MeOH fr.	9.02	112.08	15.30	170.37	114.20	464.96	885.93
100% MeOH fr.	-	-	-	13.99	-	398.81	412.80

The data was present as average of three determinations. The dash sign (-) means the concentration of the analyte was under the LOQ.

Acknowledgments

This research was supported by the Sangji University Research Fund, 2016.

References

- (1) Moncada, S.; Palmer, R. M. J.; Higgs, E. A. *Pharmacol. Rev.* **1991**, *43*, 109-142.
- (2) Baydoun, A. R.; Foale, R. D.; Mann, G. E. *Br. J. Pharmacol.* **1993**, *109*, 987-991.
- (3) Pacher, P.; Beckman, J. S.; Liaudet, L. *Physiol. Rev.* **2007**, *87*, 315-424.
- (4) Park, S.; Son, M. J.; Yook, C. S.; Jin, C. B.; Lee, Y. S.; Kim, H. J. *Phytochemistry* **2014**, *101*, 83-89.
- (5) Zhao, D. P.; Matsunami, K.; Otsuka, H. *J. Nat. Med.* **2009**, *63*, 241-247.
- (6) Yoshikawa, K.; Harada, A.; Iseki, K.; Hashimoto, T. *J. Nat. Med.* **2014**, *68*, 231-235.
- (7) Gao, J. J.; Igalshi, K.; Nukina, M. *Biosci. Biotechnol. Biochem.* **1999**, *63*, 983-988.
- (8) Choi, J.; Shin, K. M.; Park, H. J.; Jung, H. J.; Kim, H. J.; Lee, Y. S.; Rew, J. H.; Lee, K. T. *Planta Med.* **2004**, *70*, 1027-1032.
- (9) Cui, Q.; Pan, Y.; Xu, X.; Zhang, W.; Wu, X.; Qu, S.; Liu, X. *Fitoterapia* **2016**, *109*, 67-74.
- (10) Froelich, S.; Gupta, M. P.; Siems, K.; Jenett-Siems, K. *Braz. J. Pharmacogn.* **2008**, *18*, 517-520.
- (11) Schlauer, J.; Budzianowski, J.; Kukulczanka, K.; Ratajczak, L. *Acta Soc. Bot. Pol.* **2004**, *73*, 9-15.

Received April 4, 2018

Revised April 27, 2018

Accepted April 27, 2018