



# Surface deterioration of monolithic CAD/CAM restorative materials after artificial abrasive toothbrushing

Nazmiye Şen<sup>1\*</sup>, Betül Tuncelli<sup>1</sup>, Gültekin Göller<sup>2</sup>

<sup>1</sup>Department of Prosthodontics, School of Dentistry, Istanbul University, Istanbul, Turkey

<sup>2</sup>Department of Metallurgical and Materials Engineering, Faculty of Chemistry and Metallurgy, Istanbul Technical University, Istanbul, Turkey

**PURPOSE.** The purpose of this *in vitro* study was to evaluate the effect of abrasive toothbrushing on the surface properties of monolithic computer-assisted design and computer-assisted manufacturing (CAD/CAM) materials stored in food-simulating liquids (FSLs). **MATERIALS AND METHODS.** Forty-eight disk-shaped test specimens of each material (Paradigm MZ100/PMZ, Lava Ultimate/LU, Vita Enamic/VE, and Vita Mark II/VMII) with a diameter of 10.0 mm and a thickness of  $3.0 \pm 0.05$  mm were prepared. Specimens were divided into 4 subgroups (n=12) and stored in air, distilled water, 0.02 M citric acid, or 75% ethanol/water solution for 7 days at 36.5°C. Then, the specimens were brushed in a multi-station brushing machine under a vertical load of 2.0 N for 3 hours. Surface gloss (GU), roughness (Ra), and hardness (Vickers [VHN]) were measured after storage and brushing simulation. The data sets were statistically analyzed with 2 and 3-way ANOVAs followed by the Tukey's post-hoc comparisons ( $\alpha=.05$ ). **RESULTS.** Statistically significant difference was found among the materials concerning the results of surface properties. VMII showed the highest VHN, while PMZ produced the lowest. Storage in FSLs significantly affected the VHN of PMZ and LU. VMII showed the lowest Ra and highest GU irrespective of FSLs and of abrasive toothbrushing. VE, LU, and PMZ produced significant decrease in GU and increase in Ra after toothbrushing. **CONCLUSION.** Surface properties of monolithic CAD/CAM restorative materials were differently affected by the storage media and abrasive toothbrushing. [J Adv Prosthodont 2018;10:271-8]

**KEYWORDS:** Computer-aided design and computer-aided manufacturing (CAD/CAM); Toothbrushing; FSLs; Surface properties

## INTRODUCTION

The development of computer-assisted design and computer-assisted manufacturing (CAD/CAM) technology over the past thirty years has led to an unprecedented development

of new materials, manufacturing techniques, and treatment alternatives that outperform their predecessors.<sup>1-3</sup> Monolithic CAD/CAM block materials are preferred by the clinicians as they reduce the number of clinical appointments and manufacturing time needed to produce esthetic all-ceramic restorations.<sup>2</sup> Traditional monolithic CAD/CAM block materials consist of composite resins or of dental ceramics.<sup>1,4</sup> Composite resins generally have inferior mechanical properties when compared with traditional dental ceramics.<sup>5</sup> However, dental ceramics are inherently brittle and their machinability is not ideal.<sup>2,6,7</sup> In order to overcome these deficiencies, new ceramics with different new compositions such as resin nanoceramic and dual-network ceramic have been introduced to achieve mechanically stable and esthetically pleasing restorations. Resin nanoceramic (Lava Ultimate) contains nanoceramic particles bound in a cross-linked resin matrix, while dual-network ceramic (Vita Enamic) contains a feldspathic-based double penetrating polymer infiltrated ceramic net-

Corresponding author:

Nazmiye Şen  
Department of Prosthodontics, School of Dentistry, Istanbul University  
Çapa/ Fatih, Istanbul 34093, Turkey  
Tel. +90212440000-106; e-mail, nazmiye.sonmez@istanbul.edu.tr  
Received October 18, 2017 / Last Revision February 28, 2018 / Accepted  
March 5, 2018

© 2018 The Korean Academy of Prosthodontics  
This is an Open Access article distributed under the terms of the Creative Commons Attribution Non-Commercial License (<http://creativecommons.org/licenses/by-nc/3.0>) which permits unrestricted non-commercial use, distribution, and reproduction in any medium, provided the original work is properly cited.

This study was supported by the Research Fund of Istanbul University. (43707).

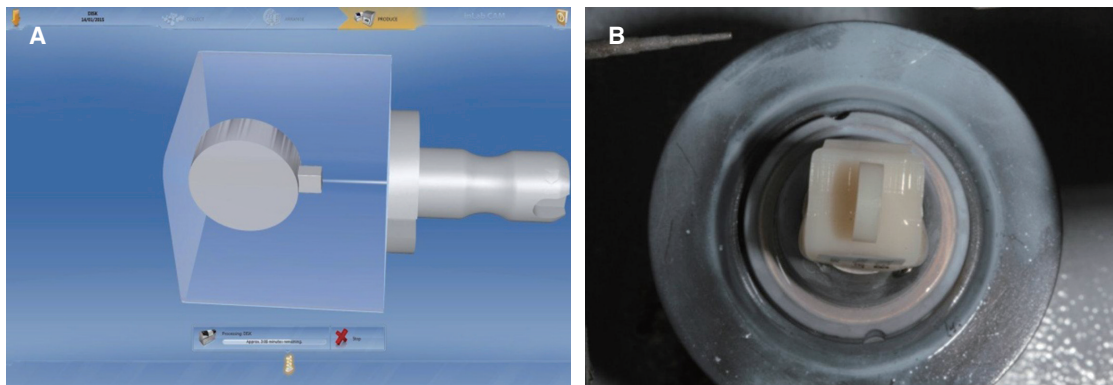
work.<sup>4,5,7,8</sup> The manufacturing purpose of these new generation materials is to combine the advantages of ceramics and composites in the same material.<sup>4</sup> Several advantages of the materials have been reported over dental ceramics, including polish retention, fracture resistance, milling damage tolerance, and reduced manufacturing time.<sup>2,4,5,7</sup>

Superficial changes of dental materials may be related to the long-term clinical success of the restorations, which are partially associated to their chemical degradation that can make the restoration more vulnerable to mechanical degradation.<sup>9,10</sup> Dental materials in the oral environment suffer an aging process provoked by diet, which could be simulated effectively by immersion in food-simulating liquids (FSLs).<sup>11,12</sup> Toothbrushing, which is an example of the body wear, constitutes another important factor on the surface properties of dental materials.<sup>13</sup> There are several investigations showing the effects of toothbrushing on the surface deterioration of restorative materials in terms of brushing time, force, and relative dentin abrasivity (RDA) of toothpaste.<sup>13-17</sup> However, there is little information related to the association between FSLs and toothbrushing abrasion on the surface texture of monolithic CAD/CAM restorative materials. Therefore, the aim of this *in vitro* study was to investigate the effect of toothbrushing on the surface prop-

erties such as gloss, roughness, and hardness of monolithic CAD/CAM restorative materials after immersion in FSLs. The null hypothesis was that surface properties of tested materials were not affected by the immersion media or toothbrushing simulation.

**MATERIALS AND METHODS**

Monolithic CAD/CAM block materials such as two resin-based block composites [Lava Ultimate (3M-ESPE, St. Paul, MN, USA), and Paradigm MZ100 (3M-ESPE, St. Paul, MN, USA)], a hybrid ceramic [Vita Enamic (Vita Zahnfabrik, Bad Sackingen, Germany)] and a silicate ceramic [Vita Mark II (Vita Zahnfabrik, Bad Sackingen, Germany)], were tested in this study (Table 1). Forty-eight disk-shaped test specimens of each CAD/CAM block with a diameter of 10.0 mm and a thickness of 3.0 mm were fabricated by using Cerec system (CEREC inLab MC XL, Dentsply Sirona, Bensheim, Germany) (Fig. 1). Specimen surfaces were polished under water-cooling in a polishing machine (LaboPol-25, Struers, Copenhagen, Denmark) with P800, P1000, P1200, P2400, and P4000 silicon carbide paper (Water Proof SiC Paper, Struers, Copenhagen, Denmark). Specimen dimensions were measured (IP54 Digital caliper, SHAN, Columbus,



**Fig. 1.** (A) Virtual design of test specimens, (B) Milled test specimens.

**Table 1.** Tested materials

Classification	Brand	Composition*	N	Code	Manufacturers
Resin nanoceramic	Lava Ultimate (A2-HT/14L)	-80% ceramic (69% SiO <sub>2</sub> , 31% ZrO <sub>2</sub> ) -20% polymer (BisGMA, UDMA, BisEMA, TEGDMA)	48	LU	3M ESPE
Dual-network ceramic	VITA Enamic (2M2-HT EM-14)	-86% ceramic (58-63% SiO <sub>2</sub> , 20-23% Al <sub>2</sub> O <sub>3</sub> , 9-11% Na <sub>2</sub> O, 4-6% K <sub>2</sub> O, 0-1% ZrO <sub>2</sub> ) -14% polymer (UDMA and TEGDMA)	48	VE	VITA Zahnfabrik
Feldspathic ceramic	Vita Mark II (2M2,C114)	56-64% SiO <sub>2</sub> , 20-23% Al <sub>2</sub> O <sub>3</sub> , 6-9% Na <sub>2</sub> O, 6-8% K <sub>2</sub> O	48	VMII	VITA Zahnfabrik
Composite resin block	Paradigm MZ 100	-85% ultrafine zirconia-silica ceramic particles, -15% polymer (Bis-GMA and TEGDMA)	48	PMZ	3M ESPE

\*As disclosed by manufacturers.

OH, USA) (Fig. 2). In total, 192 disk-shaped test specimens with a diameter of 10.0 mm and a thickness of  $3.0 \pm 0.05$  mm were prepared and ultrasonically cleaned (Sonorex Digiplus; Bandelin GmbH, Berlin, Germany) in distilled water for 10 minutes. Then, the specimens were randomly allocated into 4 subgroups ( $n = 12$ ) and stored in air, distilled water, 0.02M citric acid, or %75 ethanol/water solution for 7 days at 36.5°C. After the immersion period, surface quality was assessed with gloss, roughness, and hardness measurements.

Surface gloss was measured three times on the centre of each specimen by using a small-area glossmeter (Novo-Curve 60, Rhopoint Instruments, Istanbul, Turkey). The specimens were placed on the top plate of the glossmeter and covered with a black opaque film container to eliminate external light exposure and to maintain the exact position of the specimen during the measurement. The glossmeter was calibrated before each measurement. Gloss values were expressed as gloss units (GU) that can range from 0 (for a totally non-reflective surface) to 100 (obtained from a highly polished black glass with a refractive index of 1.567).

Initial surface roughness was measured with stylus profilometry (Dektak 8, Veeco Ins, Plainview, NY, USA) and expressed in Ra values. Three readings spaced at 120 degree, with a 0.8 mm cutoff and a speed of 0.1 mm/s, were taken and the average Ra was determined for each specimen.

Surface hardness was tested by using Vickers hardness test device (Leica VMHT, Leica Microsystems, Wetzlar, Germany). The diamond indenter of the device was used on the polished surface of the specimen with a load of 300 g for 12 s and the Vickers hardness number (VHN) was determined. The average VHN was obtained from the arithmetic mean of three VHN readings.

After the immersion period, the test specimens were ultrasonically cleaned and submitted to brushing test in a custom-made multi-station brushing machine that was prepared with 6 electrical toothbrushes (Braun Professional Care Triumph 5000, Braun, Frankfurt, Germany) fixed on a flat ground horizontally. To ensure unchanging conditions during the test period, electrical toothbrushes needed to be

charged every thirty minutes transformed to ensure long-time brushing by a 12V/60W transformer (Fig. 3). Test specimens were brushed in 'continuous mode' with a standardized force of 2 N for 3 hours.<sup>18</sup> Abrasive toothpaste slurry was prepared with a 1:1 ratio of distilled water and toothpaste (RDA-165, Colgate Tartar Control Toothpaste, Palmolive GmbH, New York, NY, USA).<sup>19</sup> Toothpaste slurry was renewed 3 times during the test period. Gloss and roughness measurements were repeated after brushing.

One random specimen from each group was selected for SEM examination (Jeol JSM-5600, Tokyo, Japan) and coated with gold and palladium using the sputtering device (Leica EM SCD 500, Leica Microsystems, Heerbrugg, Switzerland). SEM images were taken at a magnification of  $\times 1000$ .

The data sets were analyzed with statistical software (IBM SPSS Version 20, IBM, New York, NY, USA). The whole deterioration process was separately analyzed by using repeated ANOVAs. Multiple pair wise comparisons were done with post-hoc paired t-tests. The significance level was determined at  $P < .05$ .

## RESULTS

Statistically significant difference was found among the materials concerning the results of surface properties. 2 and 3-way ANOVAs were performed to investigate the effects of independent variables (materials, immersion media, and brushing simulation) on the dependent variables (gloss, hardness, and roughness) (Table 2). Tests of between-subjects effects showed that the dependent variables were significantly affected by the independent variables ( $P < .05$ ) (Table 2).

The results of Vickers hardness test measurements after the immersion period are presented in Table 3. The mean VHN value of the group VMII was significantly higher than the VHN of the groups VE, LU, and PMZ regardless of the FSLs, when they were immersed for one week ( $P < .05$ ). Immersion in FSLs significantly affected the VHN of the groups LU and PMZ ( $P < .05$ ) but produced no significant effect on the groups VMII and VE ( $P > .05$ ). Immersion in 75% ethanol/water solution significantly reduced the mean



Fig. 2. Measurement of test specimens.

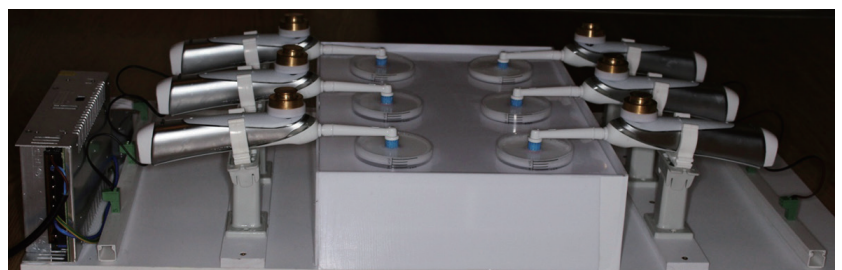


Fig. 3. Toothbrushing simulation.

**Table 2.** Tests of between-subjects effects

Source	Type III sum of squares	df	Mean square	F	Sig.
Dependent variable: VHN					
Corrected model	27216.568 <sup>a</sup>	4	8034.019	157.931	0.000
Intercept	3112.065	1	3112.065	34.530	0.017
Materials	654.135	1	654.135	87.129	0.000
Immersion media	76.432	1	76.432	9.025	0.084
Materials * Immersion media	261.702	1	261.702	29.038	0.000
Error	19735.896	64	97.038		
Total	769593.000	77			
Corrected total	385509.000	75			
Dependent variable: Gloss					
Corrected model	18916.029 <sup>b</sup>	5	5014.169	97.927	0.000
Intercept	2521.739	1	2521.739	51.015	0.005
Materials	1230.023	1	1230.023	20.430	0.000
Immersion media	786.865	1	786.865	10.206	0.854
Brushing simulation	2764.017	1	2764.017	65.184	0.000
Materials * Immersion media	129.531	1	129.531	17.195	0.009
Materials * brushing simulation	874.095	1	874.095	36.019	0.000
Immersion media * brushing simulation	1026.325	1	1026.325	46.015	0.000
Materials * Immersion media * Brushing simulation	1984.072	1	1984.072	54.189	0.000
Error	15328.012	203	125.093		
Total	882146.594	219			
Corrected total	40972.160	215			
Dependent variable: Roughness					
Corrected model	13.079 <sup>c</sup>	11	1.112	13.576	0.000
Intercept	1905.876	1	1905.876	20536.482	0.000
Materials	1.569	1	1.569	15.306	0.000
Immersion media	8.016	1	8.016	87.459	0.608
Brushing simulation	1.255	2	0.628	7.911	0.000
Materials * Immersion media	0.074	1	0.074	0.348	0.061
Materials * Brushing simulation	0.584	2	0.292	3.962	0.000
Immersion media * Brushing simulation	0.236	2	0.118	1.217	0.000
Materials * Immersion media * Brushing simulation	1.860	2	0.930	9.503	0.002
Error	6.145	60	0.126		
Total	2011.319	75			
Corrected total	17.821	74			

a. R squared = .875 (Adjusted R squared = .862)

b. R squared = .389 (Adjusted R squared = .355)

c. R squared = .610 (Adjusted R squared = .463)

VHN of LU and PMZ when compared with other immersion medias (air, distilled water, and 0.02 M citric acid) ( $P < .05$ ).

The results of gloss measurements are presented in Table 4. The highest mean GU was observed for the group VMII followed by the groups LU, VE, and PMZ. Immersion in FSLs did not significantly affect the GU of the groups

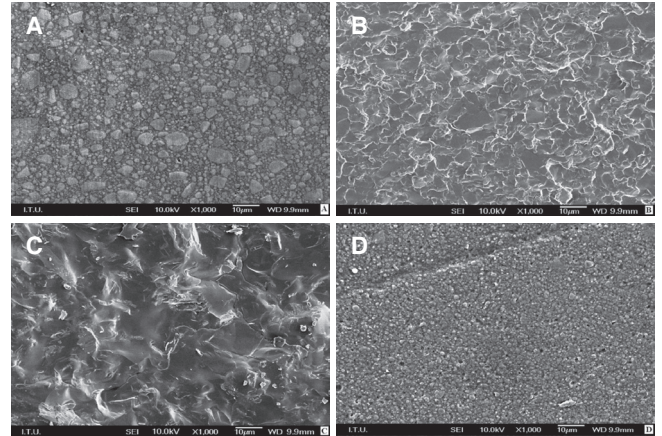
VMII, VE, and LU. Immersion in 75 % ethanol/water solution significantly reduced the mean GU of the group PMZ when compared with other immersion medias (air, distilled water, and 0.02 M citric acid) ( $P < .05$ ). Toothbrushing simulation significantly reduced the GU of VE, LU, and PMZ ( $P < .05$ ) but produced no significant effect on VMII ( $P > .05$ ).

**Table 3.** Vickers hardness of tested materials

Groups	Food simulating liquids (n = 12)	Mean ± SD
VMII (n = 48)	Air	658 ± 69 <sup>a</sup>
	Distiled water	596 ± 43 <sup>a</sup>
	0.02 M Citric acid	623 ± 58 <sup>a</sup>
	75% Ethanol	640 ± 86 <sup>a</sup>
VE (n = 48)	Air	209 ± 21 <sup>d</sup>
	Distiled water	237 ± 46 <sup>d</sup>
	0.02 M Citric acid	182 ± 11 <sup>d</sup>
	75% Ethanol	194 ± 25 <sup>d</sup>
LU (n = 48)	Air	128 ± 12 <sup>e</sup>
	Distiled water	132 ± 23 <sup>e</sup>
	0.02 M Citric acid	137 ± 18 <sup>e</sup>
	75% Ethanol	96 ± 8 <sup>f</sup>
PMZ (n = 48)	Air	104 ± 21 <sup>e,f</sup>
	Distiled water	115 ± 10 <sup>e</sup>
	0.02 M Citric acid	119 ± 15 <sup>e</sup>
	75% Ethanol	82 ± 11 <sup>f</sup>

Different superscripted letters indicate statistically significant differences of materials ( $P < .05$ ).

The results of roughness measurements are presented in Table 5. The highest mean Ra was calculated for the group VE, which was followed by the groups PMZ, LU, and VMII. Immersion in FSLs produced no significant effect on the Ra values of the tested materials (VMII, VE, LU, and PMZ) ( $P > .05$ , Table 5). VE, LU, and PMZ produced significant increases in the mean value of Ra after toothbrushing ( $P < .001$ ). SEM images of the materials showing the differences in morphology and grain size are presented in Fig. 4.



**Fig. 4.** Scanning electron microscope images of specimens at polished surfaces (original magnification  $\times 1000$ ). (A) Lava Ultimate, LU, (B) Vita Enamic, VE, (C) Vitablocs Mark II, VMII, (D) Paradigm MZ 100, PMZ.

**Table 4.** Gloss before and after brushing simulation

Groups	Food simulating liquids (n = 12)	Mean ± SD		
		Before Brushing	After Brushing	P value
VMII (n = 48)	Air	84 ± 11 <sup>a</sup>	82 ± 5 <sup>a</sup>	.396
	Distiled water	81 ± 10 <sup>a</sup>	73 ± 7 <sup>a</sup>	.062
	0.02 M Citric acid	75 ± 8 <sup>a</sup>	69 ± 5 <sup>a</sup>	.124
	75% Ethanol	77 ± 5 <sup>a</sup>	68 ± 3 <sup>a</sup>	.053
VE (n = 48)	Air	64 ± 3 <sup>a,b</sup>	51 ± 10 <sup>c</sup>	< .05
	Distiled water	60 ± 6 <sup>b</sup>	47 ± 4 <sup>c</sup>	< .05
	0.02 M Citric acid	55 ± 9 <sup>b</sup>	45 ± 6 <sup>c</sup>	< .05
	75% Ethanol	61 ± 4 <sup>b</sup>	43 ± 7 <sup>c</sup>	< .05
LU (n = 48)	Air	69 ± 7 <sup>a</sup>	59 ± 8 <sup>b</sup>	< .05
	Distiled water	72 ± 8 <sup>a</sup>	64 ± 7 <sup>a,b</sup>	.052
	0.02 M Citric acid	67 ± 5 <sup>a</sup>	55 ± 4 <sup>b</sup>	< .05
	75% Ethanol	64 ± 6 <sup>a,b</sup>	56 ± 5 <sup>b</sup>	.056
PMZ (n = 48)	Air	57 ± 4 <sup>b</sup>	49 ± 6 <sup>c</sup>	< .05
	Distiled water	62 ± 13 <sup>b</sup>	40 ± 5 <sup>c</sup>	< .001
	0.02 M Citric acid	53 ± 5 <sup>b,c</sup>	45 ± 2 <sup>c</sup>	.063
	75% Ethanol	47 ± 3 <sup>c</sup>	36 ± 5 <sup>d</sup>	< .05

Different superscripted letters indicate statistically significant differences of materials ( $P < .05$ ).

**Table 5.** Surface roughness before and after brushing simulation

Groups	Food simulating liquids (n = 12)	Mean ± SD		
		Before Brushing	After Brushing	P value
VMII (n = 48)	Air	0.246 ± 0.017 <sup>a</sup>	0.254 ± 0.013 <sup>a</sup>	.540
	Distiled water	0.240 ± 0.012 <sup>a</sup>	0.258 ± 0.021 <sup>a</sup>	.308
	0.02 M Citric acid	0.258 ± 0.06 <sup>a</sup>	0.265 ± 0.005 <sup>a</sup>	.121
	75% Ethanol	0.252 ± 0.018 <sup>a</sup>	0.259 ± 0.015 <sup>a</sup>	.092
VE (n = 48)	Air	0.697 ± 0.023 <sup>d</sup>	1.306 ± 0.036 <sup>k</sup>	< .001
	Distiled water	0.684 ± 0.037 <sup>d</sup>	1.134 ± 0.102 <sup>g</sup>	< .001
	0.02 M Citric acid	0.717 ± 0.012 <sup>d</sup>	1.329 ± 0.052 <sup>k</sup>	< .001
	75% Ethanol	0.704 ± 0.018 <sup>d</sup>	1.280 ± 0.093 <sup>k</sup>	< .001
LU (n = 48)	Air	0.517 ± 0.016 <sup>c</sup>	1.156 ± 0.106 <sup>g</sup>	< .001
	Distiled water	0.472 ± 0.023 <sup>c</sup>	1.139 ± 0.75 <sup>g</sup>	< .001
	0.02 M Citric acid	0.541 ± 0.019 <sup>c</sup>	1.164 ± 0.067 <sup>g</sup>	< .001
	75% Ethanol	0.501 ± 0.014 <sup>c</sup>	1.197 ± 0.095 <sup>a,k</sup>	< .001
PMZ (n = 48)	Air	0.633 ± 0.083 <sup>c,d</sup>	1.084 ± 0.039 <sup>g</sup>	< .001
	Distiled water	0.652 ± 0.056 <sup>d</sup>	1.020 ± 0.083 <sup>g</sup>	< .001
	0.02 M Citric acid	0.700 ± 0.081 <sup>d</sup>	1.162 ± 0.104 <sup>g</sup>	< .001
	75% Ethanol	0.648 ± 0.046 <sup>d</sup>	1.234 ± 0.069 <sup>k</sup>	< .001

Different superscripted letters indicate statistically significant differences of materials.

## DISCUSSION

The null hypothesis was rejected as significant differences were found among the groups based on the results of surface properties.

In the oral cavity, dental materials are subjected to a variety of factors including thermal, chemical, and mechanical processes that may alter the quality of surface.<sup>11,13,20</sup> A continuous process of intraoral degradation caused by chemical agents found in saliva, food and beverages, or mechanical factors like toothbrushing affect the surface properties of dental materials, which results in lower durability of the restorations.<sup>21</sup>

Surface microhardness is a primary physical property which is defined as the resistance of a material to indentation or penetration.<sup>11</sup> Hardness is generally associated with rigidity and mechanical strength of the material.<sup>5,7,11</sup> In the present study, statistically significant difference was found among the materials concerning the results of Vickers hardness. The highest mean VHN was obtained in the VMII group followed by VE, LU, and PMZ. The microhardness of CAD/CAM restorative materials has been investigated in several studies.<sup>5,7,22,23</sup> Results, obtained in the present study were in line with the results reported in the literature.<sup>22,23</sup> Immersion media produced no significant effect on the VHN of VMII and VE. However, immersion in 75% ethanol/water solution significantly reduced the VHN of LU and PMZ when compared with other immersion media (air,

distilled water, and 0.02M citric acid). Surface microhardness of dental materials has been reported to be affected by their chemical composition and media exposure.<sup>11,12,20</sup> The most common monomers used in dental composites are triethylene glycol dimethacrylate (TEGDMA), urethane dimethacrylate (UDMA), bisphenol A glycol dimethacrylate (Bis-GMA), and 2-hydroxy ethyl methacrylate (HEMA).<sup>11</sup> Dental composites also contain fillers such as quartz, colloidal silica, or ceramics.<sup>21</sup> A strong covalent bond between organic matrix and inorganic fillers is essential to obtain required physical properties in dental restorations.<sup>11,12,21</sup> Bonding of these two phases is achieved by coating the fillers with a silane coupling agent.<sup>21</sup> Ferracane and Marker reported that the storage in 75% ethanol/water solution caused degradation of the resin matrix and matrix-filler interface.<sup>24</sup> A decrease in surface hardness of resin composites after storage in ethanol has been reported in several previous studies.<sup>24-26</sup> Researchers explained the decrease in hardness after immersion in ethanol solution by referring to the solubility parameter. The solubility parameter of 75% ethanol/water solution was found to be closer to the solubility parameter of Bis-GMA/TEGDMA based composites.<sup>24</sup> There are also studies that reported no significant effect of storage media on the hardness of resin composites, possibly due to the different testing conditions (exposure time, temperature, and chemical composition of the media) and filler content (filler type and loading percentage) of the resin composite used.<sup>26,27</sup> Materials used in the present study showed micro-

structural differences, confirmed by the SEM images made on the polished surfaces (Fig. 4).

The esthetical appearance of dental restorations are affected by the surface properties such as gloss and roughness of dental materials.<sup>18,20,28</sup> Furthermore, the surface texture of the restoration is reported to have an influence on the accumulation of plaque, wear, and the discoloration of restorations.<sup>9,12</sup> In the present study, statistically significant differences were found among the groups concerning the results of gloss and roughness. The highest mean GU was observed in the WMII group, followed by LU, VE, and PMZ. The lowest Ra was obtained in the group VMII, followed by LU, PMZ, and VE. GU and Ra values were not significantly affected by the immersion media except the group PMZ that produced lower GU after immersion in 75% ethanol/water solution. Previous studies reported superficial changes of dental composites after immersion in FSLs, which they attributed to the degradation of the polymer matrix and resin-filler interface, and to the loss of inorganic filler particles.<sup>10,12,26,27</sup>

The materials were brushed for 3 h after immersion in FSLs, which may correspond with the amount of toothbrushing that is carried out over a period of 1 year, if it is assumed that a pair of premolar or molar teeth is, on average, brushed twice a day for 8 s.<sup>18,29</sup> Toothbrushing simulation significantly reduced the GU and augmented Ra values of VE, LU, and PMZ ( $P < .001$ ) but produced no significant effect on the group VMII ( $P > .05$ ). Few studies concerning the surface properties of monolithic CAD/CAM restorative materials after simulated toothbrushing are available in the existing literature, some of which are in accordance with the present study.<sup>22,30,31</sup> In a recent study, Mörmann *et al.*<sup>22</sup> investigated the surface roughness and gloss of various CAD/CAM restorative materials and reported significant decrease in gloss with a significant increase in roughness after abrasive toothbrushing.

There are several studies investigating the separate effects of FSLs and toothbrushing on the surface texture of dental materials.<sup>10-15,23</sup> In a clinical situation, toothbrushing generally comes after the exposure to FSLs.<sup>16</sup> The effect of such association between chemical and mechanical processes might also be clinically relevant. In the present study, immersion in the 75% ethanol/water solution prior to toothbrushing significantly affected the VHN and GU values of the group PMZ. This finding might be explained with the chemical degradation caused by ethanol on the Bis-GMA molecules that are present in PMZ.<sup>26</sup> Such an effect was not observed in the groups LU, VE, or VMII, possibly due to the different composition characteristics of the materials. Additionally, reducing the filler size to nano-size might be effective on the better GU and Ra values that were observed in the group LU when compared with the groups VE or PMZ.<sup>21</sup> Further studies are needed to quantify the long-term surface properties of monolithic CAD/CAM restorative materials by simulating the conditions of intra-oral environment.

## CONCLUSION

Within the limitations of the present study, it may be concluded that surface properties of monolithic CAD/CAM restorative materials are differently affected by the storage media and abrasive toothbrushing. Bis-GMA-containing CAD/CAM restorative materials showed higher surface deterioration than hybrid ceramic and silicate ceramic. Chemical compositions and microstructural differences of the materials seemed to influence the surface deterioration observed after immersion in 75% ethanol/water solution and abrasive toothbrushing.

## ORCID

Nazmiye Şen <https://orcid.org/0000-0003-2768-2112>

## REFERENCES

1. Ruse ND, Sadoun MJ. Resin-composite blocks for dental CAD/CAM applications. *J Dent Res* 2014;93:1232-4.
2. Fasbinder DJ. Materials for chairside CAD/CAM restorations. *Compend Contin Educ Dent* 2010;31:702-4, 706, 708-9.
3. Beuer F, Schweiger J, Edelhoff D. Digital dentistry: an overview of recent developments for CAD/CAM generated restorations. *Br Dent J* 2008;204:505-11.
4. Della Bona A, Corazza PH, Zhang Y. Characterization of a polymer-infiltrated ceramic-network material. *Dent Mater* 2014;30:564-9.
5. Awada A, Nathanson D. Mechanical properties of resin-ceramic CAD/CAM restorative materials. *J Prosthet Dent* 2015; 114:587-93.
6. Tsitrou EA, Northeast SE, van Noort R. Brittleness index of machinable dental materials and its relation to the marginal chipping factor. *J Dent* 2007;35:897-902.
7. Lauvahutanon S, Takahashi H, Shiozawa M, Iwasaki N, Asakawa Y, Oki M, Finger WJ, Arksornnukit M. Mechanical properties of composite resin blocks for CAD/CAM. *Dent Mater J* 2014;33:705-10.
8. Park JH, Choi YS. Microtensile bond strength and micromorphologic analysis of surface-treated resin nanoceramics. *J Adv Prosthodont* 2016;8:275-84.
9. Anil N, Bolay S. Effect of toothbrushing on the material loss, roughness, and color of intrinsically and extrinsically stained porcelain used in metal-ceramic restorations: an in vitro study. *Int J Prosthodont* 2002;15:483-7.
10. Tanoue N, Matsumura H, Atsuta M. Wear and surface roughness of current prosthetic composites after toothbrush/dentifrice abrasion. *J Prosthet Dent* 2000;84:93-7.
11. Yap AU, Mah MK, Lye CP, Loh PL. Influence of dietary simulating solvents on the hardness of provisional restorative materials. *Dent Mater* 2004;20:370-6.
12. Yap AU, Low JS, Ong LF. Effect of food-simulating liquids on surface characteristics of composite and polyacid-modified composite restoratives. *Oper Dent* 2000;25:170-6.
13. Heintze SD, Forjanic M, Ohmiti K, Rousson V. Surface dete-

- rioration of dental materials after simulated toothbrushing in relation to brushing time and load. *Dent Mater* 2010;26:306-19.
14. Garza LA, Thompson G, Cho SH, Berzins DW. Effect of toothbrushing on shade and surface roughness of extrinsically stained pressable ceramics. *J Prosthet Dent* 2016;115:489-94.
  15. Heintze SD, Forjanic M, Rousson V. Surface roughness and gloss of dental materials as a function of force and polishing time in vitro. *Dent Mater* 2006;22:146-65.
  16. Franzò D, Philpotts CJ, Cox TF, Joiner A. The effect of toothpaste concentration on enamel and dentine wear in vitro. *J Dent* 2010;38:974-9.
  17. Rosentritt M, Sawaljanow A, Behr M, Kolbeck C, Preis V. Effect of tooth brush abrasion and thermo-mechanical loading on direct and indirect veneer restorations. *Clin Oral Investig* 2015;19:53-60.
  18. Jassé FF, de Campos EA, Lefever D, Di Bella E, Salomon JP, Krejci I, Ardu S. Influence of filler charge on gloss of composite materials before and after in vitro toothbrushing. *J Dent* 2013;41:e41-4.
  19. ISO 11609. Dentistry-Dentifrices-Requirements, test methods and marking. International Organization for Standardization; Geneva; Switzerland, 2010.
  20. Ardu S, Braut V, Uhac I, Benbachir N, Feilzer AJ, Krejci I. Influence of mechanical and chemical degradation on surface gloss of resin composite materials. *Am J Dent* 2009;22:264-8.
  21. da Silva EM, Dória J, da Silva Jde J, Santos GV, Guimarães JG, Poskus LT. Longitudinal evaluation of simulated toothbrushing on the roughness and optical stability of microfilled, microhybrid and nanofilled resin-based composites. *J Dent* 2013;41:1081-90.
  22. Mörmann WH, Stawarczyk B, Ender A, Sener B, Attin T, Mehl A. Wear characteristics of current aesthetic dental restorative CAD/CAM materials: two-body wear, gloss retention, roughness and Martens hardness. *J Mech Behav Biomed Mater* 2013;20:113-25.
  23. Flury S, Diebold E, Peutzfeldt A, Lussi A. Effect of artificial toothbrushing and water storage on the surface roughness and micromechanical properties of tooth-colored CAD-CAM materials. *J Prosthet Dent* 2017;117:767-74.
  24. Ferracane JL, Marker VA. Solvent degradation and reduced fracture toughness in aged composites. *J Dent Res* 1992;71:13-9.
  25. Pilliar RM, Vowles R, Williams DF. The effect of environmental aging on the fracture toughness of dental composites. *J Dent Res* 1987;66:722-6.
  26. Sideridou ID, Karabela MM, Vouvoudi ECh. Volumetric dimensional changes of dental light-cured dimethacrylate resins after sorption of water or ethanol. *Dent Mater* 2008;24:1131-6.
  27. Yap AU, Tan SH, Wee SS, Lee CW, Lim EL, Zeng KY. Chemical degradation of composite restoratives. *J Oral Rehabil* 2001;28:1015-21.
  28. Özarslan MM, Büyükkaplan UŞ, Barutçigil Ç, Arslan M, Türker N, Barutçigil K. Effects of different surface finishing procedures on the change in surface roughness and color of a polymer infiltrated ceramic network material. *J Adv Prosthodont* 2016;8:16-20.
  29. Volpenhein DW, Walsh ME, Dellerman PA, Burkett TA. A new method for in vitro evaluation of the interproximal penetration of manual toothbrushes. *J Clin Dent* 1994;5:27-33.
  30. Koizumi H, Saiki O, Nogawa H, Hiraba H, Okazaki T, Matsumura H. Surface roughness and gloss of current CAD/CAM resin composites before and after toothbrush abrasion. *Dent Mater J* 2015;34:881-7.
  31. Kamonkhantikul K, Arksornnukit M, Lauvahutanon S, Takahashi H. Toothbrushing alters the surface roughness and gloss of composite resin CAD/CAM blocks. *Dent Mater J* 2016;35:225-32.