

# Impact of radiation dose on concurrent chemoradiotherapy for limited-stage small-cell lung cancer

Junhee Park, MD, Min Kyu Kang, MD

Department of Radiation Oncology, School of Medicine, Kyungpook National University, Daegu, Korea

**Purpose:** To evaluate clinical outcomes according to radiation dose in patients with limited-stage small-cell lung cancer (LS-SCLC) treated with concurrent chemoradiotherapy (CCRT).

**Materials and Methods:** From January 2006 to December 2015, 38 patients with LS-SCLC were treated with CCRT with etoposide and cisplatin. Total radiation doses ranged from 45 Gy to 66 Gy (1.8–2 Gy/fraction) and were classified into three groups: 45–54 Gy, 60–63 Gy, and 66 Gy. The impact of radiation dose on survival outcomes were evaluated. Toxicities were evaluated according to the Common Terminology Criteria for Adverse Events version 4.03.

**Results:** The median follow-up period was 21 months. The 2-year overall survival (OS) and local failure-free survival (LFFS) rates were 45.8% and 67.5%, respectively. The 2-year LFFS rates were 33.3% for 45–54 Gy group, 68.6% for 60–63 Gy group, and 87.1% for 66 Gy group ( $p = 0.014$ ). In multivariate analysis, radiation dose was a significant factor for LFFS ( $p = 0.015$ ). Although radiation dose was not a significant factor for OS and disease-free survival (DFS) in multivariate analysis, both OS and DFS of 66 Gy group tended to be better than that of 45–63 Gy group in univariate analysis. However, there were no differences in severe toxicities among three groups.

**Conclusion:** Higher radiation dose achieved better local control in patients with LS-SCLC treated with CCRT. In addition, a total dose of 66 Gy tended to improve OS and DFS.

**Keywords:** Small cell lung carcinoma, Chemoradiotherapy, Radiotherapy dosage

## Introduction

Lung cancer is one of the most aggressive malignancies and the leading cause of cancer-related death. Small-cell lung cancer (SCLC) cases account for 13% of lung cancer cases, and the 5-year survival rate for SCLC is about 7% [1,2]. Two meta-analyses published in 1992 demonstrated that chemotherapy combined with thoracic radiotherapy (RT) showed moderately improved survival compared with chemotherapy alone [3,4]. In addition, in a randomized trial performed to evaluate

concurrent versus sequential chemoradiotherapy, concurrent chemoradiotherapy (CCRT) showed better survival compared to the sequential arm [5]. Following these studies, CCRT has been used as a standard treatment for limited-stage SCLC (LS-SCLC).

Several studies have been performed to determine the optimal timing of the addition of RT, but the results have been controversial. Moreover, the optimal dose and fractionation of RT remain unclear. Several studies have been performed to determine the optimal radiation dose and schedule [6-11]. Compared to total dose of 45 Gy conventional RT, total dose

Received 09 June 2017, Revised 20 August 2017, Accepted 13 September 2017.

Correspondence: Min Kyu Kang, MD, Department of Radiation Oncology, Kyungpook National University Chilgok Hospital, 807 Hoguk-ro, Buk-gu, Daegu 41404, Korea. Tel: +82-53-200-2653, Fax: +82-53-200-2029, E-mail: mkkang@knu.ac.kr

© This is an Open Access article distributed under the terms of the Creative Commons Attribution Non-Commercial License (<http://creativecommons.org/licenses/by-nc/4.0/>) which permits unrestricted non-commercial use, distribution, and reproduction in any medium, provided the original work is properly cited.

[www.e-roj.org](http://www.e-roj.org)

of 45 Gy twice-daily accelerated RT over 3 weeks and dose-escalated conventional RT (60–70 Gy) showed better survival outcomes [8,9,11,12]. A pooled analysis of three Cancer and Leukemia Group B trials (CALGB 30904) reported that total dose of 70 Gy with concurrent chemotherapy was feasible and tolerable [13].

Therefore, we retrospectively analyzed treatment outcomes and toxicities of patients with LS-SCLC treated with CCRT, and investigated the impact of radiation dose on survival and toxicity.

## Materials and Methods

Kyungpook National University Hospital (IRB No. 2016-07-030-005) and Kyungpook National University Chilgok Hospital (No. 2016-08-023-007) approved this retrospective study and waived the requirement for informed patient consent.

### 1. Patients

Thirty-eight patients who were diagnosed with LS-SCLC and treated with CCRT with etoposide and cisplatin (EP) between January 2006 and December 2015 were enrolled in this study. Limited stage was defined as disease confined to a hemithorax. This included nodal disease limited to both hilum, and bilateral mediastinum. Patients with pleural or pericardial effusions and/or supraclavicular lymphadenopathy were excluded. Patients who had been treated for other malignancies before or had synchronous malignancy at diagnosis were not included. We also excluded patients who received radiation doses of less than 45 Gy or were treated with adjuvant CCRT after surgical resection.

The diagnostic workup included physical examination, bronchoscopy, sputum cytology, chest radiography, computed tomography (CT), brain magnetic resonance imaging (MRI), bone scan, and positron emission tomography/computed tomography (PET/CT). PET/CT was performed as a staging modality for all patients.

### 2. Chemoradiotherapy

All patients received CCRT with EP, which consisted of etoposide 100 mg/m<sup>2</sup>/day intravenously (IV) on day 1 and cisplatin 60 mg/m<sup>2</sup>/day IV on days 1 to 3. Thirty-four patients received chemotherapy of EP regimen before or after CCRT and four patients received induction chemotherapy of irinotecan plus cisplatin (CC). Total cycles of chemotherapy ranged from 1 to 7 (median, 4) and 29 patients (76.3%) received 4 or more cycles of chemotherapy. Twenty-one patients began

RT simultaneously with chemotherapy from the first cycle of chemotherapy, 12 from the second cycle, 2 from the third cycle, and 3 from the fourth cycle; the former two were allocated to early CCRT group and the latter two to late CCRT group.

### 3. Radiotherapy

All patients underwent planning CT for three-dimensional conformal RT (3D-CRT). Gross tumor volume (GTV) included primary tumor and positive lymph nodes. Clinical target volume (CTV) included GTV with appropriate margin expansion and positive lymph node stations. Initial CTV always covered ipsilateral hilar lymph nodes and subcarinal lymph node. Elective nodal irradiation (ENI) was defined as radiation to clinically uninvolved mediastinal lymph node stations. After a radiation dose of 44–45 Gy in 1.8–2 Gy per fraction, planning CT was performed for boost treatment. Boost RT was administered to primary tumor and positive lymph nodes seen on pretreatment CT. Planning target volume (PTV) for both initial and boost RT was generated by expanding CTV with a margin of 1 cm mediolaterally and 1.5 cm craniocaudally. Total radiation dose was gradually escalated (range, 45 to 66 Gy; median, 63 Gy) and the most recently used dose was 66 Gy. Prophylactic cranial irradiation (PCI; 25 Gy in 10 fractions) was given for patients who achieved complete response (CR) or partial response (PR) after the completion of treatment.

### 4. Follow-up and response assessment

Posttreatment assessments were performed using physical examination, bronchoscopy, and imaging studies as needed. Follow-up imaging evaluation was generally performed within 3 months after the completion of CCRT and then every 3 to 6 months. Tumor response was evaluated based on the first follow-up chest CT after treatment according to Response Evaluation Criteria in Solid Tumors version 1.1 [14]. If patients did not undergo a CT scan within 3 months for any reason, response was evaluated based on the earliest examination performed. Brain MRI was performed for patients who either showed CR or PR with good performance status before PCI, or who showed central nervous system symptoms.

Local failure was defined as increased size of primary lesion within radiation field. Regional failure was defined as increased size of mediastinal lymph nodes or recurrence within regional lymph nodes. In-field or out-of-field recurrence was analyzed by comparing the locations of recurrence with the radiation field. When imaging findings were indeterminate, failure was determined by subsequent imaging studies and not

Table 1. Patients' characteristics

Characteristic	No. of patients (%)				p-value
	All	45–54 Gy	60–63 Gy	66 Gy	
Age (yr)					0.247
≤65	25 (65.8)	8 (88.9)	7 (58.3)	10 (58.8)	
>65	13 (34.2)	1 (11.1)	5 (41.7)	7 (41.2)	
Sex					0.191
Male	37 (97.4)	8 (88.9)	12 (100)	17 (100)	
Female	1 (2.6)	1 (11.1)	0 (0.0)	0 (0.0)	
ECOG performance status					0.690
0	23 (60.5)	6 (66.7)	8 (66.7)	9 (52.9)	
1	15 (39.5)	3 (33.3)	4 (33.3)	8 (47.1)	
T stage <sup>a)</sup>					0.550
1–2	31 (81.6)	7 (77.8)	11 (91.7)	13 (76.5)	
3–4	7 (18.4)	2 (22.2)	1 (8.3)	4 (23.5)	
N stage <sup>a)</sup>					0.708
0	3 (7.9)	1 (11.1)	0 (0.0)	2 (11.8)	
1	7 (18.4)	1 (11.1)	4 (33.3)	2 (11.8)	
2	16 (42.1)	4 (44.4)	5 (41.7)	7 (41.2)	
3	12 (31.6)	3 (33.3)	3 (25.0)	6 (35.3)	
AJCC stage <sup>a)</sup>					0.798
I–II	10 (26.3)	2 (22.2)	4 (33.3)	4 (23.5)	
III	28 (73.7)	7 (77.8)	8 (66.7)	13 (76.5)	
Chemotherapy					0.955
CC + EP	4 (10.5)	1 (11.1)	1 (8.3)	2 (11.8)	
EP	34 (89.5)	8 (88.9)	11 (91.7)	15 (88.2)	
Timing					0.749
Early	33 (86.8)	8 (88.9)	11 (91.7)	14 (82.4)	
Late	5 (13.2)	1 (11.1)	1 (8.3)	3 (17.6)	
ENI					0.021
No	8 (21.1)	0 (0.0)	1 (8.3)	7 (41.2)	
Yes	30 (78.9)	9 (100)	11 (91.7)	10 (58.8)	
Response					0.240
No	3 (7.9)	1 (11.1)	2 (16.7)	0 (0.0)	
Yes	35 (92.1)	8 (88.9)	10 (83.3)	17 (100)	
PCI <sup>b)</sup>					0.349
No	18 (51.4)	4 (50.0)	7 (70.0)	7 (41.2)	
Yes	17 (48.6)	4 (50.0)	3 (30.0)		

ECOG, Eastern Cooperative Oncology Group; AJCC, American Joint Committee on Cancer; EP, etoposide + cisplatin; CC, irinotecan + cisplatin; ENI, elective nodal irradiation; PCI, prophylactic cranial irradiation.

<sup>a)</sup> Stage was based on 7th edition of the American Joint Committee on Cancer staging manual.

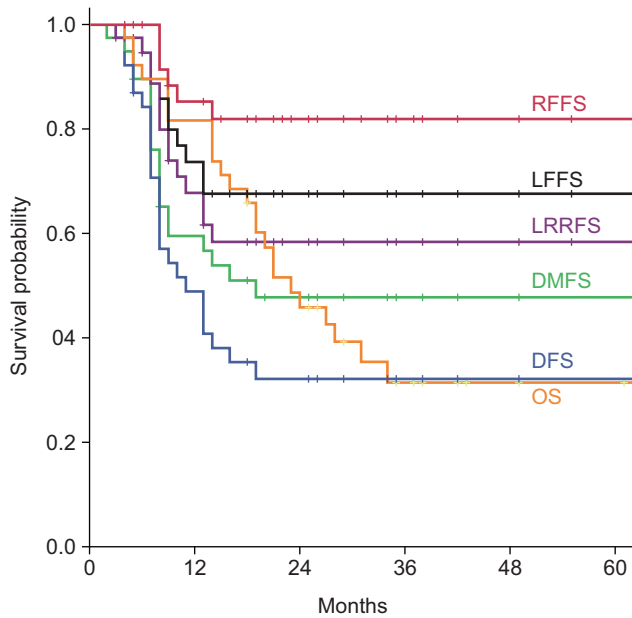
<sup>b)</sup> The use of PCI was compared among the patients with complete or partial response after treatment.

recorded as recurrence until progression. Distant metastasis (DM) was defined as metastases in any other sites except those mentioned above. Toxicities were evaluated according to the Common Terminology Criteria for Adverse Events version 4.03 [15].

## 5. Statistical analysis

Radiation doses were classified into three groups: 45–54

Gy, 60–63 Gy, and 66 Gy. We evaluated overall survival (OS), disease-free survival (DFS), local failure-free survival (LFFS), regional failure-free survival (RFFS), locoregional failure-free survival (LRFFS), and distant metastasis-free survival (DMFS) according to radiation doses as primary endpoints. Survival curves were estimated by the Kaplan-Meier method from the start date of treatment until the date of event or last follow-up. Each event was defined as follows: death from any cause



**Fig. 1.** Survival curves. RFFS, regional failure-free survival; LFFS, local failure-free survival; LRRFS, locoregional failure-free survival; DMFS, distant metastasis-free survival; DFS, disease-free survival; OS, overall survival.

for OS, any locoregional or distant recurrence for DFS. Local or regional failure or DM that occurred as the patterns of initial failure was recorded as the event. When treatment failures at different sites were detected within 3 months, these failures were regarded as synchronous. The associations between survival outcomes and total radiation doses were analyzed with the log-rank test and Cox proportional hazards model. As secondary endpoints, the toxicity profiles according to radiation doses were compared. Patient characteristics and toxicities according to radiation dose were compared using Pearson chi-square test. IBM SPSS ver. 23 (IBM Corp., Armonk, NY, USA) was used for analysis, and p-values of less than 0.05 were considered statistically significant.

## Results

### 1. Patient characteristics

Patient characteristics are summarized in Table 1. The median age was 63 years (range, 35 to 76 years). Thirty-seven patients (97.4%) were men, and 28 (73.7%) had stage III tumors. Thirty patients (78.9%) received ENI. Seventeen patients (48.6%) received PCI. The radiation doses were 45–54 Gy in 9 patients (23.7%), 60–63 Gy in 12 patients (31.6%), and 66 Gy in 17 patients (44.7%). When comparing the characteristics of

patients, tumors, and treatments, all were not statistically different among three groups except the use of ENI (Table 1).

### 2. Response

The tumor responses were CR, PR, stable disease, and progressive disease in 7 (18.4%), 28 (73.7%), 1 (2.6%), and 2 (5.3%) patients, respectively. The maximal response of all patients was not different from the response based on the initial follow-up CT except in 4 patients, who showed their maximal response at 4 months after the completion of CCRT.

### 3. Survival and patterns of failure

The median follow-up period was 21 months (range, 4 to 119 months). All survival outcomes are shown in Fig. 1. Of the 38 patients, 14 patients (36.8%) remained alive at the time of the last follow-up. The median OS and DFS for all patients were 23 and 11 months, respectively. The 1-year and 2-year OS rates were 81.6% and 45.8%, respectively. The 1-year and 2-year DFS rates were 48.8% and 32.1%, respectively.

Failure patterns are shown in Table 2. Fourteen patients experienced locoregional failure(s); local in 11 patients and regional in 6 patients. The 1-year and 2-year LFFS rates were 73.6% and 67.5%, respectively. The RFFS and LRRFS rates at 2-year were 81.8% and 58.3%, respectively. No isolated regional failures were found, and Table 2 shows that in-field was a major pattern of failure.

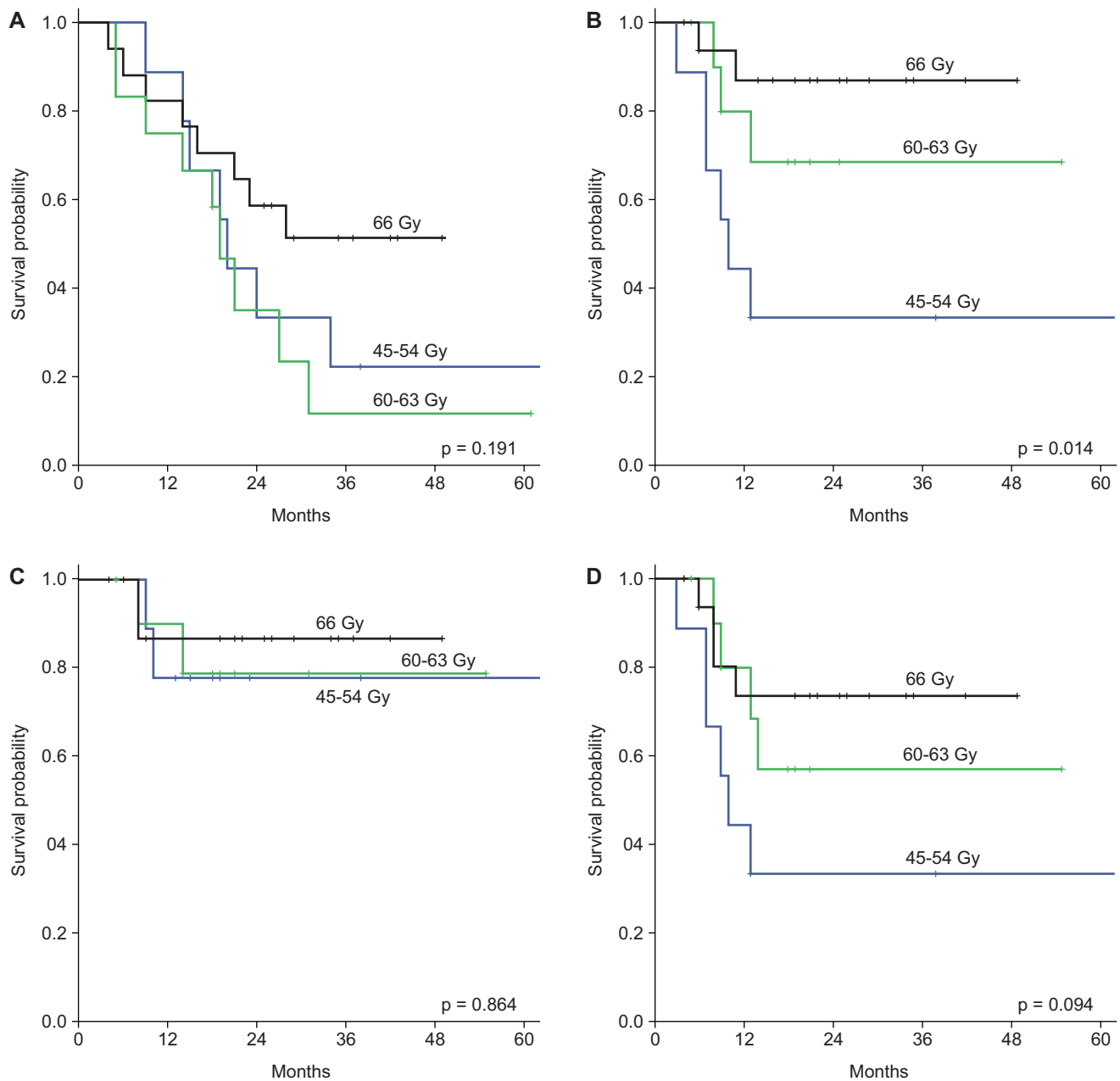
Nineteen patients experienced DM with simultaneous locoregional failure in 8 patients. The 1-year and 2-year DMFS rates were 59.4% and 47.7%, respectively. The common sites of DM were brain ( $n = 9$ ), bone ( $n = 8$ ), liver ( $n = 7$ ), adrenal glands ( $n = 4$ ), pleura ( $n = 4$ ), abdominal lymph node ( $n = 4$ ), and contralateral lung ( $n = 2$ ).

### 4. Survival outcomes according to total radiation dose

Survival differences according to radiation doses are shown in Fig. 2. Higher radiation dose significantly improved LFFS ( $p = 0.014$ ) and tended to improve LRRFS ( $p = 0.094$ ). However, there was no difference in RFFS. Even though there was no statistical difference in OS and DFS among three groups, 66 Gy group achieved better survival than other groups; when patients were divided into two groups (45–63 Gy vs. 66 Gy), there was a borderline significance in both OS ( $p = 0.086$ ) and DFS ( $p = 0.097$ ).

### 5. Factors associated with survival

The results of univariate and multivariate analyses for survival outcomes are summarized in Table 3.



**Fig. 2.** Survival curves according to total radiation doses: (A) overall survival, (B) local failure-free survival, (C) regional failure-free survival, and (D) locoregional failure-free survival.

Radiation dose was a significant factor for LFFS in both univariate ( $p = 0.014$ ) and multivariate analyses ( $p = 0.015$ ), and had marginal significance for LRFSS ( $p = 0.081$ ) in multivariate analysis. Achieving response was a significant factor for LFFS ( $p = 0.046$ ), RFFS ( $p = 0.019$ ), and LRFSS ( $p = 0.007$ ) in univariate analysis, which maintained significance for LRFSS ( $p = 0.041$ ) in multivariate analysis. Receiving PCI was a significant factor for DMFS ( $p = 0.011$ ) and had marginal

significance for OS ( $p = 0.066$ ) and DFS ( $p = 0.091$ ). However, there were no factors associated with RFFS.

### 6. Toxicity

The most common toxicities were acute esophagitis and radiation pneumonitis. Acute esophagitis was defined as dysphagia observed during RT or within 1 month after the completion of RT. Twenty-one patients showed acute

**Table 2.** Patterns of initial failure

	No. of patients (%)				p-value
	All	45–54 Gy	60–63 Gy	66 Gy	
Total failure					0.321
No	13 (34.2)	2 (22.2)	3 (25.0)	8 (47.1)	
Yes	25 (65.8)	7 (77.8)	9 (75.0)	9 (52.9)	
Failure pattern					0.308
No	12 (31.6)	2 (22.2)	3 (25.0)	7 (41.2)	
Locoregional	7 (18.4)	4 (44.4)	1 (8.3)	2 (11.8)	
Distant	11 (28.9)	1 (11.1)	5 (41.7)	5 (29.4)	
Locoregional + distant	8 (21.1)	2 (22.2)	3 (25.0)	3 (17.6)	
Local failure					0.013
No	27 (71.1)	3 (33.3)	9 (75.0)	15 (88.2)	
Yes	11 (28.9)	6 (66.7)	3 (25.0)	2 (11.8)	
Regional failure					0.781
No	32 (84.2)	7 (77.8)	10 (83.3)	15 (88.2)	
Yes	6 (15.8)	2 (22.2)	2 (16.7)	2 (11.8)	
Locoregional failure					0.091
No	24 (63.2)	3 (33.3)	8 (66.7)	13 (76.5)	
Yes	14 (36.8)	6 (66.7)	4 (33.3)	4 (23.5)	
Distant metastasis					0.302
No	19 (50.0)	6 (66.7)	4 (33.3)	9 (52.9)	
Yes	19 (50.0)	3 (33.3)	8 (66.7)	8 (47.1)	
In-field failure <sup>a)</sup>					0.260
No	1 (7.1)	0 (0.0)	0 (0.0)	1 (25.0)	
Yes	13 (92.9)	6 (100)	4 (100)	3 (75.0)	

<sup>a)</sup> In-field failure rates were calculated in patients with locoregional failure.

esophagitis, and 13 had grade 2 toxicity. There was no grade 3 or higher acute esophagitis. Among 35 patients with radiation pneumonitis, 33 patients experienced grade 1–2 toxicity and 2 had grade 5 toxicity. Late lung fibrosis was determined 6 months after the completion of RT; only grade 1 toxicity was observed in 33 patients. Grade 3 and 5 febrile neutropenia occurred in 3 patients. Grade 5 aspiration pneumonia was observed in 1 patient. There were no statistical differences in observed toxicities according to radiation dose (Table 4).

## Discussion and Conclusion

In the present study, we analyzed treatment outcomes according to radiation dose in patients with LS-SCLC treated with CCRT. Radiation dose was a significant prognostic factor for local control in multivariate analysis, but not with regional control. Even though radiation dose was not a prognostic factor for OS and DFS in multivariate analysis, a total dose of 66 Gy tended to improve OS and DFS.

The optimal radiation dose and fractionation have not yet been determined. In the phase II study by the Southwest

Oncology Group, 45 Gy once-daily CCRT achieved a median survival of approximately 18 months and a 2-year survival rate of 40% with acceptable toxicities [16]. Because the dose-response curve for SCLC cells had no shoulder when studied *in vitro*, a relatively lower dose hyperfractionated RT regimen was performed to reduce the toxicities to normal organs [8]. A pilot study conducted by the Eastern Cooperative Oncology Group showed that twice-daily thoracic RT resulted in no differences in efficacy and toxicities compared to standard fractionation RT [9]. Based on the results of previous studies, the Intergroup 0096 was conducted to compare 45 Gy in 1.8 Gy once daily to 45 Gy in 1.5 Gy twice daily, and reported that accelerated twice-daily RT showed superior survival [17]. As a result, a twice-daily regimen of 45 Gy has become a standard regimen for LS-SCLC.

However, because the biological effective dose of once-daily RT is not the same as that of twice-daily RT when considering total RT duration, and the rate of in-field recurrence has continued to be high despite the use of CCRT, many dose escalation studies have been performed [11,12]. The Radiation Therapy Oncology Group (RTOG) 9712 trial showed an

**Table 3.** Univariate and multivariate analysis of survival outcomes

	OS		LFFS		DMFS	
	Uni	Multi (HR, 95% CI)	Uni	Multi (HR, 95% CI)	Uni	Multi (HR, 95% CI)
	Age ( $\leq 65$ vs. $> 65$ yr)	0.315	0.333 (0.594, 0.207–1.706)	0.368	0.850 (0.849, 0.155–4.642)	0.213
AJCC stage (I–II vs. III)	0.755	0.777 (1.150, 0.438–3.023)	0.991	0.643 (1.432, 0.314–6.539)	0.819	0.922 (0.948, 0.323–2.782)
Total dose (45–54 vs. 60–63 vs. 66 Gy)	0.191	0.376 (0.797, 0.482–1.318)	0.014	0.015 (0.346, 0.148–0.811)	0.227	0.610 (1.169, 0.641–2.133)
Timing (early vs. late)	0.782	0.536 (0.662, 0.179–2.446)	0.601	0.676 (1.442, 0.259–8.022)	0.705	0.660 (0.733, 0.184–2.918)
Response (yes vs. no)	0.246	0.601 (0.706, 0.192–2.599)	0.046	0.071 (0.198, 0.034–1.146)	0.642	0.978 (1.022, 0.211–4.946)
PCI (yes vs. no)	0.178	0.066 (0.448, 0.190–1.056)	-	-	0.005	0.011 (0.252, 0.088–0.727)

OS, overall survival; LFFS, local failure-free survival; DMFS, distant metastasis-free survival; uni, univariate analysis; multi, multivariate analysis; HR, hazard ratio; CI, confidence interval; AJCC, American Joint Committee on Cancer; PCI, prophylactic cranial irradiation.

improvement in survival with dose escalation up to 61.2 Gy in 1.8 Gy per fraction [12]. Another phase I study (CALGB 8837) showed that the maximum tolerated radiation dose of CCRT was 45 Gy in 30 fractions over 3 weeks for twice-daily RT and 70 Gy in 35 fractions over 7 weeks for once-daily RT [11]. In this study, there was no difference in survival between the once-daily RT group and the twice-daily RT group; however, no analysis was performed regarding the dose-response relationship. In a pooled analysis of subsequent CALGB studies (39808, 30002, and 30206) using 70 Gy in 35 fractions, 2-year OS and progression-free survival rates were 20% and 26%, respectively, which were comparable to those of the Intergroup 0096 study [13]. Based on these results, two phase III randomized studies (CALGB 30610 and CONVERT) are ongoing to clarify the optimal radiation dose [18,19]. CALGB 30610 randomly assigned patients to receive 45 Gy in 1.5 Gy twice daily, 70 Gy in 2 Gy once daily, or 61.2 Gy in 1.8 Gy per fraction with accelerated fractionation [18]. The interim analysis showed that the median survival times were 21.5, 21.5, and 20.2 months with no significant difference in OS ( $p = 0.631$ ). After the interim analysis, a dose schedule of 61.2 Gy in 34 fractions was discontinued because of the greatest toxicities. The survival results comparing 70 Gy in 2 Gy once daily versus 45 Gy in 1.5 Gy twice daily will be available after several years. Another phase III randomized study, the CONVERT trial, is comparing 66 Gy in 2 Gy once-daily RT with 45 Gy in 1.5 Gy twice-daily RT. Recently, it reported no survival differences at a median follow-up of 45 months with similar toxicity profiles [19].

Although 45 Gy in 1.5 Gy twice daily with concurrent chemotherapy is the only treatment schedule that has been confirmed by a randomized trial, only a once-daily RT schedule has been applied in Korea because twice-daily RT has not been reimbursed by the national health insurance system. Furthermore, it is still necessary to determine the optimal radiation dose with daily fractionated RT when considering the following results. An early study from Massachusetts General Hospital showed that a higher total dose achieved higher locoregional control within the range of 30 Gy to 50 Gy [20]. In a later study from the same hospital reporting the results in patients treated with  $\geq 50$  Gy, the higher dose group (55–72 Gy, median 63 Gy) tended to achieve a higher DMFS although there were no differences in OS, local control, or DFS between the two groups (50–54 Gy vs. 55–72 Gy) [6]. The current study showed a positive dose-response relationship in local control (45–54 Gy vs. 60–63 Gy vs. 66 Gy) (Fig. 2, Table 3). In a Japanese retrospective study, the higher dose group

**Table 4.** Treatment-related toxicities

	No. of patients (%)			p-value
	45–54 Gy	60–63 Gy	66 Gy	
Febrile neutropenia				0.570
Grade 0	9 (100)	11 (91.7)	15 (88.2)	
Grade 3–5	0 (0.0)	1 (8.3)	2 (11.8)	
Acute esophagitis				0.992
Grade 0–1	6 (66.7)	8 (66.7)	11 (64.7)	
Grade 2–5	3 (33.3)	4 (33.3)	6 (35.3)	
Radiation pneumonitis				0.691
Grade 0–2	9 (100)	11 (91.7)	16 (94.1)	
Grade 3–5	0 (0.0)	1 (8.3)	1 (5.9)	

(54–66 Gy) achieved significantly better local control and OS compared to the lower dose group (<54 Gy) [7]. In addition, long-term survival data from CALGB 8837 showed better median survival and 5-year OS in the daily fractionated RT arm compared to the twice-daily RT arm [21].

Dose escalation may be associated with better survival but could jeopardize survival by simultaneously increasing toxicities. Rutter et al. [22] evaluated dose escalation in SCLC with CCRT. For patients treated with radiation doses of 30.01 to 70 Gy, median OS increased and HR decreased in accordance with the increase in total radiation dose; these findings were statistically significant. However, OS in patients treated with radiation doses of over 70 Gy (70.01–80 Gy) was inferior compared with that of patients treated with radiation doses of 40.01 to 70 Gy. Salama et al. [23] analyzed predictors of pulmonary toxicity in 100 patients with LS-SCLC treated with CCRT of 70 Gy. Grade 3 pulmonary toxicity was observed in 3 patients (3%), and its likelihood was associated with the volume of lung irradiated with lower, intermediate, and higher radiation doses. As 3D-CRT or intensity-modulated RT has come into wide use recently, it has become possible to escalate the radiation dose more safely than in the past. The toxicity profiles of the current study showed that high-dose radiation of 66 Gy using 3D-CRT did not increase the acute and late radiation-induced toxicities when compared to a lower dose radiation. However, radiation-induced lung toxicities should be carefully considered when using high-dose radiation, considering two cases of grade 5 radiation pneumonitis in 29 patients receiving 60–66 Gy.

Several prospective randomized and retrospective studies have demonstrated that the omission of ENI was not associated with isolated nodal recurrence; in-field recurrence was a major failure pattern [24–27]. In the current study,

in-field recurrence occurred in 92.9% of the patients with locoregional failures and radiation dose was a significant factor for LFFS in multivariate analysis. Therefore, dose escalation to the gross tumor without ENI could be a strategy to improve both locoregional control and DFS without increasing toxicities.

This study has some limitations as a retrospective study with a small number of patients. Because of the long period of enrollment for patients, treatment volume, the implementation of PCI, and chemotherapeutic regimen have changed. The characteristics of patients and tumors should be heterogeneous. Because the radiation dose has increased gradually, the follow-up period of patients treated with higher doses was shorter. All of these factors can serve as causes of bias. Furthermore, assessment of toxicities was difficult because they were obtained by retrospective chart review.

In summary, higher radiation dose was associated with better local control and high-dose radiation of 66 Gy tended to improve OS and DFS. Because the follow-up period of 66 Gy group was short, long-term follow-up is needed to know the impact of radiation dose on OS and DFS. Although there are some limitations due to its nature as a retrospective study, the results of the present study imply the possibility of high-dose radiation in the treatment of LS-SCLC.

## Conflict of Interest

No potential conflict of interest relevant to this article was reported.

## References

1. Miller KD, Siegel RL, Lin CC, et al. Cancer treatment and



- survivorship statistics, 2016. *CA Cancer J Clin* 2016;66:271-89.
- Siegel RL, Miller KD, Jemal A. Cancer statistics, 2016. *CA Cancer J Clin* 2016;66:7-30.
  - Pignon JP, Arriagada R, Ihde DC, et al. A meta-analysis of thoracic radiotherapy for small-cell lung cancer. *N Engl J Med* 1992;327:1618-24.
  - Warde P, Payne D. Does thoracic irradiation improve survival and local control in limited-stage small-cell carcinoma of the lung? A meta-analysis. *J Clin Oncol* 1992;10:890-5.
  - Takada M, Fukuoka M, Kawahara M, et al. Phase III study of concurrent versus sequential thoracic radiotherapy in combination with cisplatin and etoposide for limited-stage small-cell lung cancer: results of the Japan Clinical Oncology Group Study 9104. *J Clin Oncol* 2002;20:3054-60.
  - Roof KS, Fidias P, Lynch TJ, Ancukiewicz M, Choi NC. Radiation dose escalation in limited-stage small-cell lung cancer. *Int J Radiat Oncol Biol Phys* 2003;57:701-8.
  - Tomita N, Kodaira T, Hida T, et al. The impact of radiation dose and fractionation on outcomes for limited-stage small-cell lung cancer. *Int J Radiat Oncol Biol Phys* 2010;76:1121-6.
  - Frytak S, Shaw EG, Jett JR, et al. Infusion cisplatin chemotherapy and hyperfractionated thoracic radiotherapy for small-cell lung cancer. *Am J Clin Oncol* 1996;19:193-8.
  - Johnson DH, Turrisi AT, Chang AY, et al. Alternating chemotherapy and twice-daily thoracic radiotherapy in limited-stage small-cell lung cancer: a pilot study of the Eastern Cooperative Oncology Group. *J Clin Oncol* 1993;11:879-84.
  - Schild SE, Bonner JA, Shanahan TG, et al. Long-term results of a phase III trial comparing once-daily radiotherapy with twice-daily radiotherapy in limited-stage small-cell lung cancer. *Int J Radiat Oncol Biol Phys* 2004;59:943-51.
  - Choi NC, Herndon JE 2nd, Rosenman J, et al. Phase I study to determine the maximum-tolerated dose of radiation in standard daily and hyperfractionated-accelerated twice-daily radiation schedules with concurrent chemotherapy for limited-stage small-cell lung cancer. *J Clin Oncol* 1998;16:3528-36.
  - Komaki R, Swann RS, Ettinger DS, et al. Phase I study of thoracic radiation dose escalation with concurrent chemotherapy for patients with limited small-cell lung cancer: report of Radiation Therapy Oncology Group (RTOG) protocol 97-12. *Int J Radiat Oncol Biol Phys* 2005;62:342-50.
  - Salama JK, Hodgson L, Pang H, et al. A pooled analysis of limited-stage small-cell lung cancer patients treated with induction chemotherapy followed by concurrent platinum-based chemotherapy and 70 Gy daily radiotherapy: CALGB 30904. *J Thorac Oncol* 2013;8:1043-9.
  - Eisenhauer EA, Therasse P, Bogaerts J, et al. New response evaluation criteria in solid tumours: revised RECIST guideline (version 1.1). *Eur J Cancer* 2009;45:228-47.
  - National Cancer Institute. Common Terminology Criteria for Adverse Events (CTCAE) v4.03 [Internet]. Bethesda, MD: National Cancer Institute; c2017 [cited 2018 Jan 20]. Available from: [https://evs.nci.nih.gov/ftp1/CTCAE/CTCAE\\_4.03/CTCAE\\_4.03\\_2010-06-14\\_QuickReference\\_5x7.pdf](https://evs.nci.nih.gov/ftp1/CTCAE/CTCAE_4.03/CTCAE_4.03_2010-06-14_QuickReference_5x7.pdf).
  - McCracken JD, Janaki LM, Crowley JJ, et al. Concurrent chemotherapy/radiotherapy for limited small-cell lung carcinoma: a Southwest Oncology Group Study. *J Clin Oncol* 1990;8:892-8.
  - Turrisi AT 3rd, Kim K, Blum R, et al. Twice-daily compared with once-daily thoracic radiotherapy in limited small-cell lung cancer treated concurrently with cisplatin and etoposide. *N Engl J Med* 1999;340:265-71.
  - ClinicalTrials.gov. Phase III comparison of thoracic radiotherapy regimens in patients with limited small cell lung cancer also receiving cisplatin and etoposide [Internet]. Bethesda, MD: National Library of Medicine; c2017 [cited 2017 Aug 20]. Available from: <https://clinicaltrials.gov/ct2/show/NC00632853?term=calgb+30610&rank=1>.
  - Faivre-Finn C, Snee M, Ashcroft L, et al. Concurrent once-daily versus twice-daily chemoradiotherapy in patients with limited-stage small-cell lung cancer (CONVERT): an open-label, phase 3, randomised, superiority trial. *Lancet Oncol* 2017;18:1116-25.
  - Choi NC, Carey RW. Importance of radiation dose in achieving improved loco-regional tumor control in limited stage small-cell lung carcinoma: an update. *Int J Radiat Oncol Biol Phys* 1989;17:307-10.
  - Choi NC, Herndon J, Rosenman J, et al. Long term survival data from CALGB 8837: radiation dose escalation and concurrent chemotherapy (CT) in limited stage small cell lung cancer (LD-SCLC): possible radiation dose-survival relationship [abstract]. *Proc Am Soc Clin Oncol* 2002;21:1190.
  - Rutter CE, Park HS, Corso CD, et al. Comparison of survival outcomes among standard radiotherapy regimens in limited-stage small cell lung cancer patients receiving concurrent chemoradiation. *Lung Cancer* 2015;90:243-8.
  - Salama JK, Pang H, Bogart JA, et al. Predictors of pulmonary toxicity in limited stage small cell lung cancer patients treated with induction chemotherapy followed by concurrent platinum-based chemotherapy and 70 Gy daily radiotherapy: CALGB 30904. *Lung Cancer* 2013;82:436-40.
  - De Ruyscher D, Bremer RH, Koppe F, et al. Omission of

- elective node irradiation on basis of CT-scans in patients with limited disease small cell lung cancer: a phase II trial. *Radiother Oncol* 2006;80:307-12.
25. Colaco R, Sheikh H, Lorigan P, et al. Omitting elective nodal irradiation during thoracic irradiation in limited-stage small cell lung cancer: evidence from a phase II trial. *Lung Cancer* 2012;76:72-7.
26. Shirvani SM, Komaki R, Heymach JV, Fossella FV, Chang JY. Positron emission tomography/computed tomography-guided intensity-modulated radiotherapy for limited-stage small-cell lung cancer. *Int J Radiat Oncol Biol Phys* 2012;82:e91-7.
27. Liu Z, Liu W, Ji K, Wang P, Wang X, Zhao L. Simultaneous integrated dose reduction intensity-modulated radiotherapy applied to an elective nodal area of limited-stage small-cell lung cancer. *Exp Ther Med* 2015;10:2083-7.
26. Shirvani SM, Komaki R, Heymach JV, Fossella FV, Chang JY.