

## Genome-Wide Comparison of Carbohydrate-Active Enzymes (CAZymes) Repertoire of *Flammulina ononidis*

Young-Jin Park<sup>a</sup>  and Won-Sik Kong<sup>b</sup>

<sup>a</sup>Department of Integrated Biosciences, Research Institute for Biomedical & Health Science, College of Biomedical and Health Science, Konkuk University, Chungju-si, Korea; <sup>b</sup>Mushroom Research Division, National Institute of Horticultural and Herbal Science, Rural Development Administration, Eumseong-gun, Korea

### ABSTRACT

Whole-genome sequencing of *Flammulina ononidis*, a wood-rotting basidiomycete, was performed to identify genes associated with carbohydrate-active enzymes (CAZymes). A total of 12,586 gene structures with an average length of 2009 bp were predicted by the AUGUSTUS tool from a total 35,524,258 bp length of *de novo* genome assembly (49.76% GC). Orthologous analysis with other fungal species revealed that 7051 groups contained at least one *F. ononidis* gene. In addition, 11,252 (89.5%) of 12,586 genes for *F. ononidis* proteins had orthologs among the Dikarya, and *F. ononidis* contained 8 species-specific genes, of which 5 genes were paralogous. CAZyme prediction revealed 524 CAZyme genes, including 228 for glycoside hydrolases, 21 for polysaccharide lyases, 87 for glycosyltransferases, 61 for carbohydrate esterases, 87 with auxiliary activities, and 40 for carbohydrate-binding modules in the *F. ononidis* genome. This genome information including CAZyme repertoire will be useful to understand lignocellulolytic machinery of this white rot fungus *F. ononidis*.

### ARTICLE HISTORY

Received 16 July 2018  
Revised 9 October 2018  
Accepted 12 October 2018

### KEYWORDS

*Flammulina ononidis*;  
genome; carbohydrate-  
active enzyme

## 1. Introduction

*Flammulina ononidis* was first described as a new species based on material from Germany and growth on *Ononis spinosa* [1]. In previous studies, *F. ononidis* differs from the popular edible mushroom *F. velutipes* in having wider spores. The minimum average spore width (SW) of *F. ononidis* is reported to be 4.2  $\mu\text{m}$ , with a maximum SW for *F. velutipes* of 4  $\mu\text{m}$  [2–4]. In addition, *Flammulina* species can be discriminated by species-specific motifs in the internal transcribed spacer (ITS) DNA region and there were variable regions of ITS1 ranging from 28-bp to 63-bp, and from 148-bp to 149-bp that were species-specific [5]. The authors demonstrated that both *F. velutipes* and *F. ononidis* lacked bases in the latter area [5].


Biological assay with mycelial cultures of the genus *Flammulina* has been investigated by several authors to provide fundamental data and for widespread application [6,7].

Interestingly, inconsistent results from earlier studies on *Flammulina* species have been reported, one of which concerns the laccase activity of *Flammulina* species. In cultural studies of *Flammulina* species, the similarity of *F. ononidis* and *F. velutipes* were observed in growth rate [7]. In

addition, the authors reported that *Flammulina* species varied in laccase (EC 1.10.3.2) activity and *F. velutipes* and *F. ononidis* produced no laccase [7]. Other studies [8,9] also described the inability of *F. velutipes* to produce laccase. However, the presence of laccase activity has been reported from all *Flammulina* species, with significant variation between different isolates [10]. Moreover, laccase production can vary based on growth time and season [11]. It has been suggested that the morphological characteristics and habitat of *Flammulina* species are important for classification of the European species of the genus *Flammulina* and that *F. ononidis* generally grows on roots, gregarious or scattered, and sometimes occurs in clusters [12].

Several fungi possess lignocellulolytic activity and efficiently degrade lignocellulosic polymers derived from plants [13]. Thus, fungi are frequently found in nature, such as on softwoods, hardwoods, grasses, crops, and forest waste. Among them, fungi capable of decomposing lignin and polysaccharides are termed wood-rotting fungi. They are generally divided into white-rot fungi and brown-rot fungi [14]. These abilities of fungi are mainly due to their various enzymes, which include carbohydrate-active enzymes (CAZymes). CAZymes include glycoside

CONTACT Young-Jin Park  [yjpark@kku.ac.kr](mailto:yjpark@kku.ac.kr)

 Supplemental data for this article can be accessed [here](#).

**Table 1.** Statistics of genome sequencing of *F. ononidis*.

HiSeq 2000 NGS analysis	
Total reads (100 bp)	25,964,380
Reads after trimming (%), >Q30	24,132,250 (92.94)
Velvet <i>de novo</i> assembly	
Optimised Velvet hash value (kmer)	31
Total number of contigs	12,825
Number of contigs (>1 kb)	1586
Contig N50 (bp)	73,451
Length of longest contig (bp)	808,623
Total bases in contigs (bp)	34,524,258
Total bases in contigs (>1 kb)	32,738,129
GC content (%)	49.76
AUGUSTUS gene prediction	
Predicted gene	12,269
Average gene length (bp)	2009
Average protein length (aa)	535.53
Average exon per gene	6.86
Average exon size (bp)	234.09
Average intron size (bp)	68.14

hydrolases (GHs), carbohydrate esterases (CEs), polysaccharide lyases (PLs), glycosyltransferases (GTs), and enzymes with auxiliary activities (AA), as well as carbohydrate-binding modules (CBMs) having carbohydrate-binding activity. These CAZymes are classified into several families based on their functional amino acid sequences and structural similarity (CAZy database; <http://www.cazy.org/>) [15]. Understanding the mechanism of degradation of wood-rotting fungi that can degrade lignocellulosic polymers allows for a wide variety of use. Therefore, CAZymes have a great potential due to their diverse biotechnological and industrial applications [14].

To date, several studies have been carried out to uncover wood degrading machinery of the fungal genome. In addition, the excavation of enzymes capable of degrading biomass in the fungal genome has also become an important research area in the post-genome era. Here, we first report the genome sequence of *F. ononidis* for identification of CAZyme genes to increase utilization of these biotechnologically and industrially useful enzymes. The genomic information of *F. ononidis* will help to understand this fungus, and the gene information predicted to encode CAZymes will be useful for future biotechnology and industrial applications.

## 2. Materials and methods

### 2.1. Genome sequencing, gene modeling, and gene annotation of *F. ononidis*

*F. ononidis* KACC46186 was obtained from the National Agrobiodiversity Center (<http://genebank.rda.go.kr/>) and was grown at 26 °C on potato dextrose agar (PDA, 20 g dextrose, 4 g potato starch, 15 g agar per liter) for 14 days. *F. ononidis* genomic DNA was extracted by a previously described method [16]. Genome sequencing of *F. ononidis* was performed using the HiSeq 2000 platform according

to the manufacturer's protocol (Illumina Inc., USA). Sequence reads were deposited in the Sequence Read Archive (SRA) at the National Center for Biotechnology Information (NCBI; SRP152895). Raw sequencing reads were processed by FastQC (<http://www.bioinformatics.babraham.ac.uk/projects/fastqc/>) and Trimmomatic (version 0.32) [17] for quality control and trimming of bad quality reads including sequencing adapters, respectively. *De novo* assembly of the resulting short-reads was performed by Velvet Optimiser [18] with kmer-size search range of 17–31. Gene structure modeling of *F. ononidis de novo* assembly was performed using the AUGUSTUS tool [19] trained in *Laccaria bicolor*. Functional annotation of the predicted genes was performed using DIAMOND [20] and BLASTP (v 2.2.31) softwares against a non-redundant database and fungal genome database from NCBI. Protein family search was further conducted using Pfam-scan software [21] against the protein family database (Pfam 31.0, <http://pfam.xfam.org>).

### 2.2. Ortholog analysis

Orthologous groups were clustered using OrthoFinder (version 2.2.1) software [22] based on all-versus-all protein comparison with fungal species including *Aspergillus nidulans* FGSC A4 [23], *Botrytis cinerea* B05.10 [24], *Agaricus bisporus* var. *bisporus* H97 [25], *Coprinopsis cinerea* okayama7#130 [26], *Cordyceps militaris* CM01 [27], *Cryptococcus neoformans* var. *grubii* H99 [28], *F. velutipes* KACC42780 [16], *L. bicolor* S238N-H82 [29], *Lentinula edodes* [30], *Neurospora crassa* OR74A [31], *Phanerochaete chrysosporium* RP78 [32], *Saccharomyces cerevisiae* S288C [33], *Schizophyllum commune* H4-8 [34], *Trichoderma reesei* QM6a [35], and *Ustilago maydis* 521 [36].

### 2.3. CAZyme identification

CAZyme genes associated with GHs, GTs, PLs, CEs, and AAs, and CBMs were predicted using HMMER 3.0 package software (<http://hmmer.org/>) with the dbCAN CAZyme database [37] and obtained from DOE Joint Genome Institute (JGI Fungi Portal database; <https://genome.jgi.doe.gov/programs/fungi/index.jsf>) and CAZy database (<http://www.cazy.org/>).

## 3. Results and discussion

### 3.1. General features of *F. ononidis* genome

The total number of quality-checked and trimmed reads from the total 25,964,380 reads (100-bp paired-end) was 24,132,250 (>Q30). The resulting

**Table 2.** Comparison of genome characteristics between *F. ononidis* and other basidiomycetes.

Genome characteristics	<i>F. ononidis</i>	<i>F. velutipes</i>	<i>L. bicolor</i>	<i>C. cinerea</i>	<i>P. chrysosporium</i>	<i>U. maydis</i>	<i>S. commune</i>
Strain	KACC46186	KACC42780	S238N-H82	Okayama7#130	RP78	521	H4-8
Genome assembly (Mb)	34.5	35.6	64.9	37.5	35.1	19.7	38.5
Number of protein-coding genes	12,269	12,218	20,614	13,544	10,048	6522	13,181
GC contents (%)	49.76	48.99	46.6	51.6	53.2	54.0	56.6
Average gene length (bp)	2009	2,294	1533.0	1679.0	1667.0	1935.0	1794.9
Average exon size (bp)	234.09	231.4	210.1	251.0	232.0	1051.0	249.3
Average intron size (bp)	68.14	190.3	92.7	75.0	117.0	127.0	79.0

short reads were assembled using Velvet assembly tool with a kmer-size search range of 17–31. The resulting optimized assembly (31 kmer) consisted of 12,825 sequence contigs with a total length of 34,524,258 bp (49.76% GC) and N50 length of 73,451 bp (Table 1). Gene structure modeling was performed using the AUGUSTUS tool. A total of 12,269 gene models were predicted with an average gene length of 2,009 bp (Table 1). The predicted genes contained exons and introns averaging 234.09 bp and 68.14 bp in length, respectively. Of the 12,269 predicted genes, 85.8% (10,529) and 82% (10,068) had significant sequence similarity ( $0.001 > e$ -value) to documented proteins in NCBI-NR and fungal genome database, respectively (Supplementary data S1). In genome comparison with other basidiomycetes, the general features of *F. ononidis* genome were similar with those of its nearest sequenced species, *F. velutipes* [16], except average intron size (Table 2).

In a protein family search against the Pfam 31.0 database, 6,964 and 1,206 genes were annotated as functional proteins and as multi-domain protein families, respectively (Supplementary data S2). Cluster analysis with other sequenced fungal species identified 7,051 groups containing at least one *F. ononidis* protein (Table 3). Analysis of these clusters suggested that 58.7% of *F. ononidis* proteins had orthologs among the Dikarya and were thus conserved in basidiomycetes and ascomycetes (Table 3). Among the set of homologous genes, 592 single-copy orthologs were detected and *F. ononidis* contained 8 species-specific genes, of which 5 were paralogous. Additionally, *F. ononidis* was classified into one group with *F. velutipes* by ortholog-clustering analysis (Figure 1).

### 3.2. GTs in *F. ononidis* genome

GTs (EC 2.4.x.y) catalyze the formation of a glycoside involved in the biosynthesis of oligosaccharides, polysaccharides, and glycoconjugates [38,39]. GTs also catalyze glycosyl group transfer to specific acceptor molecules, forming glycosidic bonds [39–41]. In CAZyme identification based on a dbCAN database search, a total of 32 GT families including 87 GTs were identified from *F. ononidis*

genome, of which about 50% (15 families) were identified as a family of one GT gene (Figure 2(a) and Supplementary data S3). It has been reported that a large number of GTs (approximately 1–2% of the gene products) are found in completely sequenced organisms [15]. Among the GT families, GT2 and GT4 account for approximately half of the total number of GTs in the CAZy database (<http://www.cazy.org/>). Presently, the GT2 family was prominently present, with 11 genes in the *F. ononidis* genome (Figure 2(a) and Supplementary data S3). Additionally, 64 and 54 GTs were identified by BLASTP (NCBI-NR) and protein family database (Pfam 31.0) search, respectively (Supplementary data S4). Thus, a total of 100 GTs was identified from three different databases, of which 34 GTs were commonly identified. Among the total 100 GTs, 17, 8, and 4 GTs were uniquely identified by dbCAN, NCBI-NR, and pfam databases searches, respectively (Figure 3(a) and Supplementary data S4).

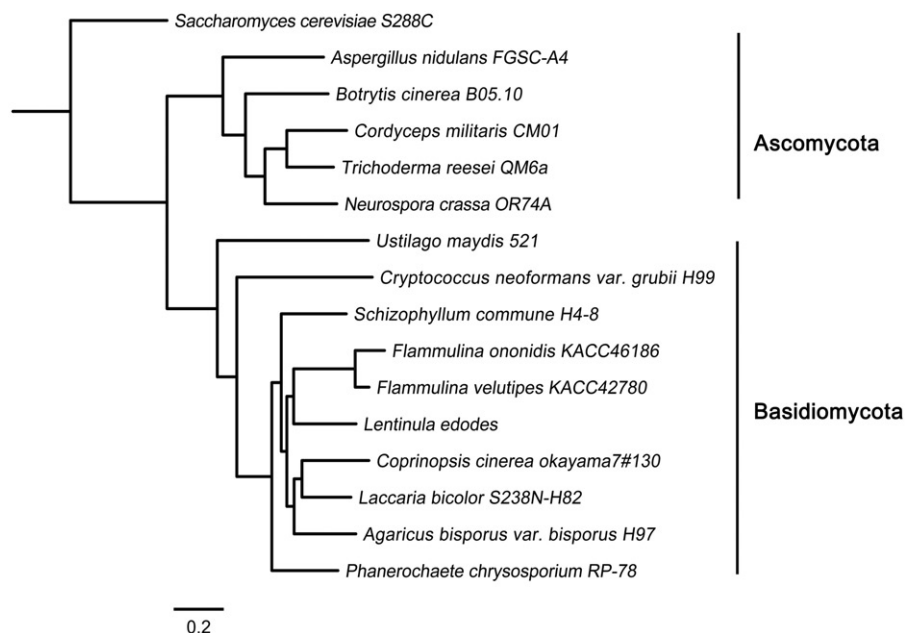
GTs have been classified into families based on amino acid sequence similarities [40,41]. Likewise, 100 GTs were identified in the three databases with amino acid sequences of predicted genes in the *F. ononidis* genome. However, many GTs showed different activity, even though the members of GT are closely related to their sequences [38]. It has been reported that polyspecific families including GT2 or GT4 have amino acid sequence similarities within only a small portion of the catalytic domain [38]. Therefore, Mukai et al. [42] suggested that a method that does not rely on sequence similarity is required for GT identification. The authors demonstrated that a computational method for determining the transmembrane region of Golgi-localized signal-anchor-type GTs and for discovering novel GTs [42]. Furthermore, additional studies based on structural, modeling, and mutational analysis are needed to identify and elucidate the enzymatic characteristics of these enzymes.

### 3.3. GHs in *F. ononidis* genome

GHs (EC 3.2.1.x) are key enzymes of carbohydrate metabolism that catalyze the hydrolysis of glycosidic bonds of carbohydrate substrates. GHs are involved in the degradation of the most biomass such as

**Table 3.** Ortholog analysis of *F. ononidis* with other sequenced fungal species.

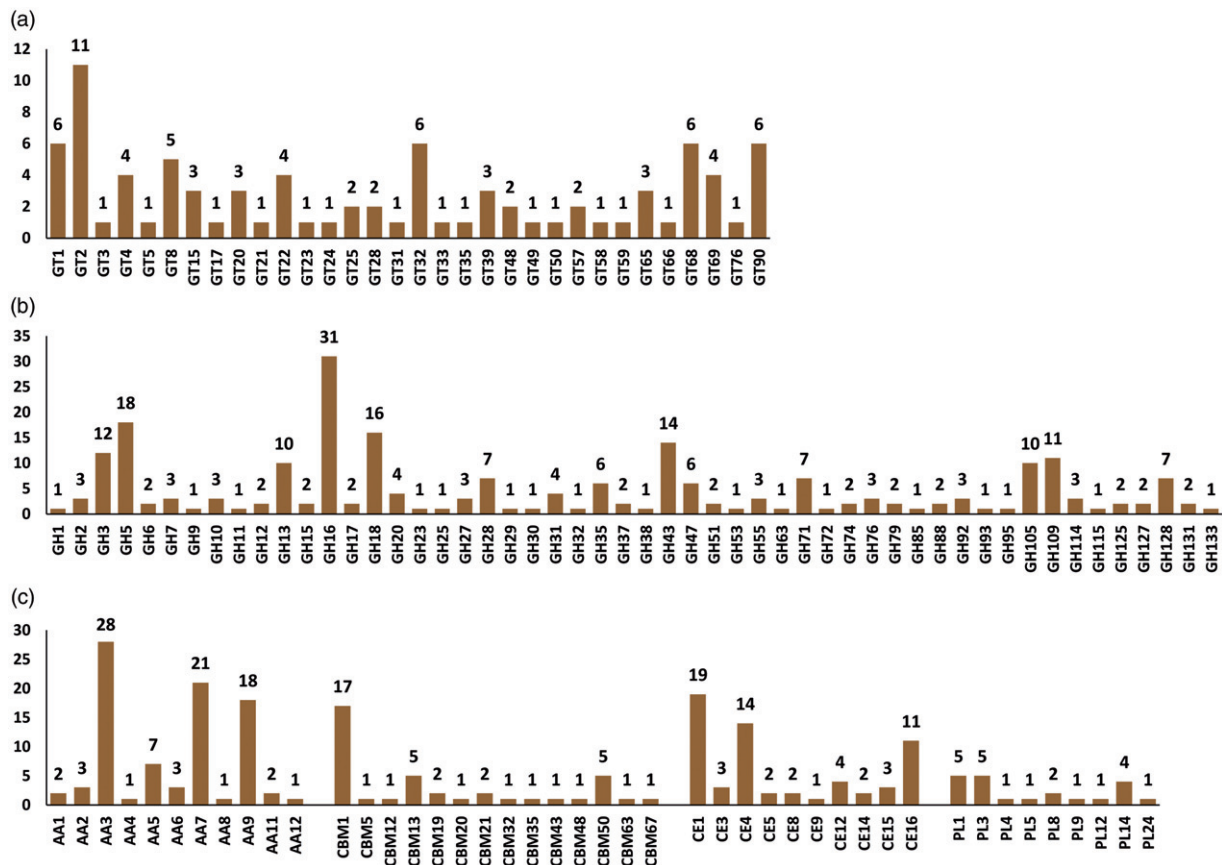
Taxon	Fungal species	No. of genes	No. of genes in orthogroups (%)	No. of unassigned genes (%)	No. of orthogroups containing species (%)	No. of species-specific orthogroups	No. of genes in species-specific orthogroups (%)	
Basidiomycota	<i>Flammulina ononidis</i> KACC46186	12,269	11,249 (92)	1020 (8)	7051 (58.7)	3	8 (0.1)	
	<i>Flammulina velutipes</i> KACC42780	12,218	10,460 (86)	1758 (14)	6674 (55.6)	5	12 (0.1)	
	<i>Agaricus bisporus</i> var. <i>bisporus</i> H97	10,448	9077 (87)	1371 (13)	5,893 (49.1)	24	186 (1.8)	
	<i>Coprinopsis cinerea</i> okayama 7#130	13,356	10,780 (81)	2576 (19)	6,585 (54.8)	44	247 (1.8)	
	<i>Cryptococcus neoformans</i> var. <i>grubii</i> H99	7,826	6,515 (83)	1,311 (17)	4,898 (40.8)	38	131 (1.7)	
	<i>Laccaria bicolor</i> S238N-H82	18,215	12,502 (69)	5713 (31)	6376 (53.1)	66	448 (2.5)	
	<i>Lentinula edodes</i>	14,079	11,605 (82)	2474 (18)	6879 (57.3)	49	297 (2.1)	
	<i>Phanerochaete chrysosporium</i> RP78	13,602	10,411 (77)	3,191 (24)	6437 (53.6)	34	186 (1.4)	
	<i>Schizophyllum commune</i> H4-8	13,194	10,895 (83)	2,299 (17)	6397 (53.3)	50	337 (2.6)	
	<i>Ustilago maydis</i> 521	6783	5656 (83)	1127 (17)	4845 (40.3)	9	22 (0.3)	
	Ascomycota	<i>Aspergillus nidulans</i> FGSC-A4	9561	8442 (88)	1119 (12)	5817 (48.4)	5	24 (0.3)
		<i>Botrytis cinerea</i> B05.10	16,389	9329 (57)	7060 (43)	6389 (53.2)	14	43 (0.3)
		<i>Cordyceps militaris</i> CM01	9651	8382 (87)	1269 (13)	6254 (52.1)	5	15 (0.2)
<i>Neurospora crassa</i> OR74A		10,812	8649 (80)	2163 (20)	6341 (52.8)	8	22 (0.2)	
<i>Saccharomyces cerevisiae</i> S288C		6002	4631 (77)	1371 (23)	3572 (29.7)	13	34 (0.6)	
<i>Trichoderma reesei</i> QM6a		9115	8331 (91)	784 (9)	6417 (53.4)	4	9 (0.1)	

**Figure 1.** Phylogenetic tree of fungal species based on ortholog clustering. The amino acid sequences in each orthologous group were aligned by MAFFT (<https://mafft.cbrc.jp/alignment/software/>) and phylogenetic tree was constructed with FastTree (<http://www.microbesonline.org/fasttree/>) with 1000 bootstraps.

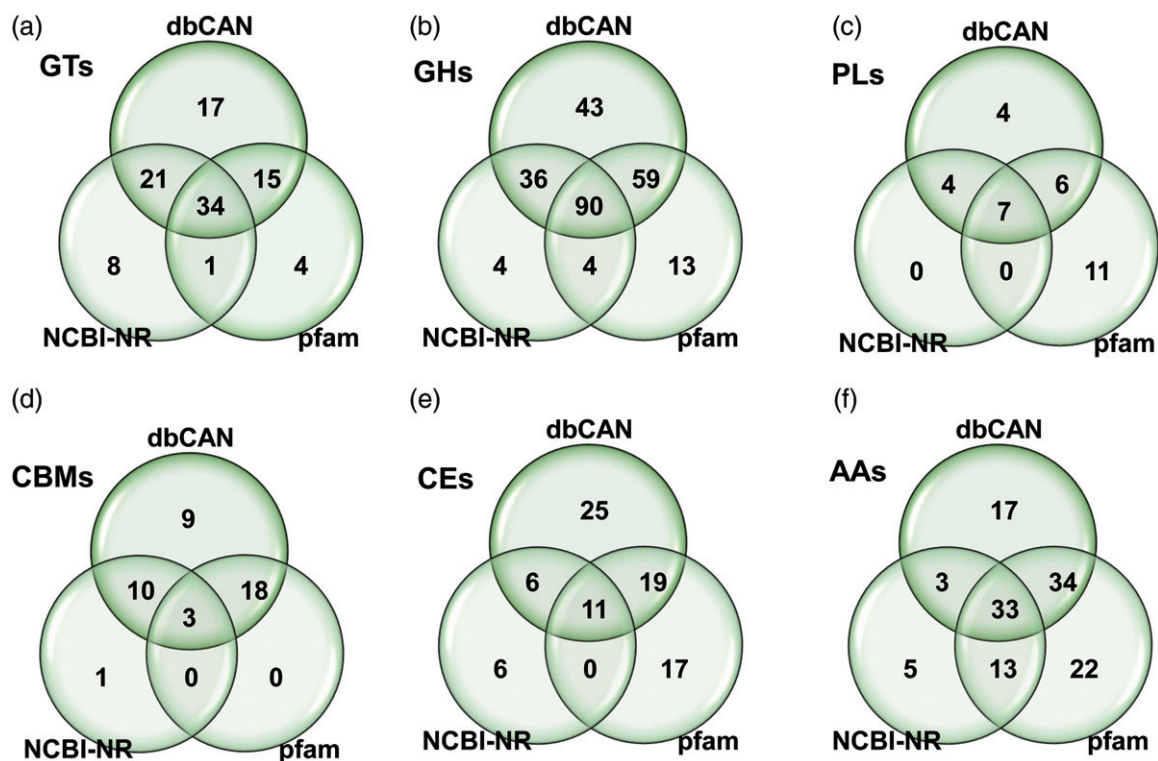
cellulose, hemicellulose, and starch [43,44]. GHs are classified into various families based on sequence similarity. At the time of writing (July 2018), the database comprises more than 507,392 classified and

8,914 non-classified GH sequences that have been divided into 153 families (CAZy database; <http://www.cazy.org/>). Presently, a total of 228 GHs were classified into 52 families predicted in the *F. onionidis*

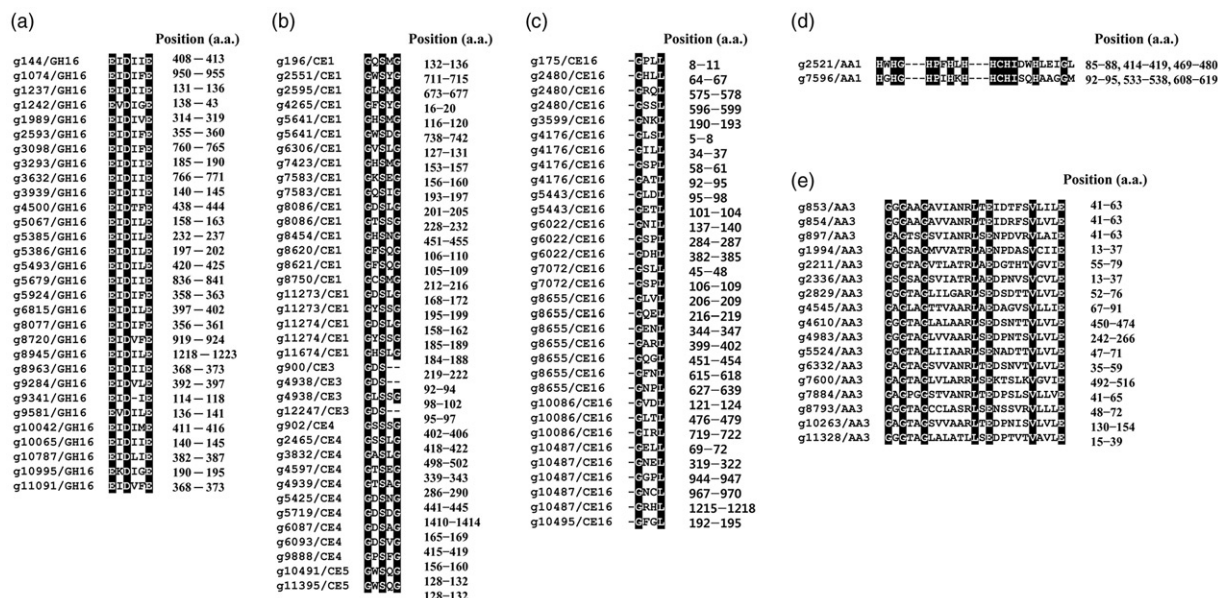




**Figure 2.** CAZyme distribution predicted from *F. ononidis* genome. The number after each CAZyme means family. (a) GT families; (b) GH families; (c) AA, CBM, CE, and PL families. AA, auxiliary activities; GH, glycoside hydrolase; GT, glycosyltransferase; CBM, carbohydrates-binding module; PL, polysaccharide lyase.



**Figure 3.** Venn diagrams of CAZymes predicted in *F. ononidis* by three different database searches including protein family database (Pfam), CAZyme database (dbCAN), and National Center for Biotechnology Information (NCBI) non-redundant database (NCBI-NR). (a) GT families; (b) GH families; (c) PL families; (d) CBM families; (e) CE families; and (f) AA families.



**Figure 4.** Conserved motifs within (a) glycoside hydrolase family 16, (b) carbohydrate esterase family 1, (c) carbohydrate esterase family 3, (d) auxiliary activity family 1 (laccase), and (e) auxiliary activity family 3 (GMC oxidoreductase) amino acids of *F. ononidis*. Position (a.a.) refers to the start and end positions of the motif in the amino acid sequence.

genome based on a dbCAN database search (Figure 2(b) and Supplementary data S3). GH family classification revealed 17 families that consisted of only 1 GH. GH16 was prominently present, with 31 genes (Figure 2(b) and Supplementary data S3). A total of 249 GHs were identified from the dbCAN, BLASTP (NCBI-NR), and protein family (Pfam 31.0) databases (Figure 3(b) and Supplementary data S5). Among them, 134 and 166 GHs were identified by NCBI-NR and Pfam 31.0 search, respectively, and 90 GHs were commonly identified among the three different databases (Figure 3(b) and Supplementary data S5).

In previous studies, most of the enzymes belonging to the GH16 family were found to contain a conserved motif, EXDX(X)E, in their amino acid sequences [45,46]. Our results also showed the conserved motifs within amino acid sequences of genes predicted to encode GH16 families in *F. ononidis*, except one GH16 family (Figure 4(a) and Supplementary data S3). Among them, 8, 6, 5, and 2 GH16 families possessed a catalytic motif identical to EIDIIE, EIDILE, EIDIFE, and EIDVFE, respectively (Figure 4(a)). Kotake et al. [47] indicated that the first and last glutamic acid (E) residues are important for the catalytic activity of the GH16 family enzyme. Although further analysis is required to characterize their biochemical activities, these results suggest that these genes predicted to encode GH16 families might act as GHs, such as lichenase (EC 3.2.1.73), xyloglucan xyloglucosyltransferase (EC 2.4.1.207), agarase (EC 3.2.1.81), kappa-carrageenase (EC 3.2.1.83), endo-beta-1,3-glucanase (EC 3.2.1.39), endo-beta-1,3-1,4-glucanase (EC 3.2.1.6), and endo-beta-galactosidase (EC 3.2.1.103).

GHs are essential for the processing of polysaccharides including cellulose and xylan of various plants and chitin, which are important carbon and nitrogen sources in nature [15]. The enzymes belonging to GH5–GH9, GH12, GH44, GH45, and GH48 families act as cellulases; those belonging to GH10, GH11, and GH30 families act as xylanases; and those belonging to GH18, GH19, and GH85 families act as xylanase chitinases [15,48]. Our results also reveal that *F. ononidis* contains genes associated with cellulase (18 GH5, 2 GH6, 3 GH7, 1 GH9, and 2 GH12 families), xylanase (3 GH10, 1 GH11, and 1 GH30), and chitinases (16 GH18 and 1 GH85) in its genome sequence (Figure 2(b) and Supplementary data S3).  $\beta$ -Glucosidases (EC 3.2.1.21), which are also members of GH families such as GH1 and GH3, convert cellobiose into glucose. CAZyme annotation also revealed *F. ononidis* contained these GH families with 1 GH1 and 12 GH3 families in its genome (Figure 2(b) and Supplementary data S3).

Plant cell walls often form complex polysaccharides structure with cellulose and xylan. Therefore, the synergistic activities of various GH families are required to degrade these complexes efficiently. Among various organisms in nature, fungi play a key role in the degradation of these complex polysaccharide structures and, therefore, are likely to be applied to the industrial and biotechnological applications, such as food, paper, textile, animal feed, and other chemicals, including biofuels [14]. Thus, our results suggest that *F. ononidis* has a strong potential for industrial and biotechnological applications, because of the over 200 genes predicted to encode various GHs in its genome.

### 3.4. PLs in *F. ononidis* genome

Polysaccharides are essential cellular components of all living organisms [49]. PLs (EC 4.2.2.-) act on polysaccharides to produce an unsaturated polysaccharide via a  $\beta$ -elimination mechanism [50].

To date, PLs have been classified into 28 families with more than 14,200 classified and 1,300 non-classified PL sequences in the CAZy database (<http://www.cazy.org/>). Pectate or pectin is less prominently present in plants than cellulose and hemicellulose [51,52]. The enzymes that catalyze the formation of polygalacturonan are designated pectate or pectin lyases [52]. Several fungi produce both pectin lyases and pectate lyases, which are often accompanied by other hydrolases to degrade pectin and/or pectate [53]. Pectin and pectate lyases have been classified into 6 PL families in the CAZy database: PL1, PL2, PL3, PL9, PL10, and PL22 (<http://www.cazy.org/>). All characterized pectin lyases (EC 4.2.2.10) are classified in the PL1 family. In addition, pectate lyases (EC 4.2.2.2 and EC 4.2.2.9) of fungal species belong to PL1, PL3, and PL9 (CAZy database; <http://www.cazy.org/>).

In *F. ononidis*, a total of 21 PLs classified in 9 families were identified in the genome according to a dbCAN database search (Figure 2(c) and Supplementary data S3). Among them, the PL1 and PL3 families were prominently present in the *F. ononidis* genome, with 5 genes each (Figure 2(c) and Supplementary data S3). Furthermore, 11 and 24 PLs were identified by NCBI-NR and Pfam 31.0 database searches, respectively, and 7 PLs were commonly identified among the three different databases (Figure 3(c) and Supplementary data S6).

Recently, the determination of the sequences of a variety of basidiomycetes has revealed information about genes encoding PLs. This information has the potential to be used in biotechnological applications. *S. commune* is one of the most efficient (hemi)cellulose degrading-basidiomycete because of the wealth of putative pectin-degrading lyases in its genome and, therefore, produces a high level of pectinase [34,54]. Similarly, diverse members of PL families including PL1, PL3, and PL9 in the *F. ononidis* genome suggest the potential of this fungus for various applications involved in the processing of polysaccharides in the future.

### 3.5. CBMs in *F. ononidis* genome

CBMs have carbohydrate-binding activity. They bind to carbohydrate ligands and enhance the catalytic efficiency of CAZymes [55]. Although CBMs have no hydrolytic activity, the enzymatic complex including GHs, GTs, and PLs, which contain CBM, more efficiently degrade substrate [56]. CBMs have

been classified into 83 families with more than 133,400 classified in the CAZy database (CAZy database; <http://www.cazy.org/>).

In the present study, a total of 40 CBMs classified into 14 families with 17 CBM1 families were identified in the *F. ononidis* genome based on a dbCAN database search (Figure 2(c) and Supplementary data S3). Among them, 9 families including CBM5, CBM12, CBM20, CBM32, CBM35, CBM43, CBM48, CBM63, and CBM67 consisted of only one CBM (Figure 2(c) and Supplementary data S3). Moreover, 14 and 21 CBMs were identified by NCBI-NR and Pfam 31.0 database searches, respectively (Figure 3(d) and Supplementary data S7), and 3 CBMs (CBM1/5 and CBM21) were commonly identified among the three different databases (Figure 3(d) and Supplementary data S7). CBM is considered as an essential module in cellulase and cellobiohydrolases, and belongs to the GH6 and GH7 families [57]. In the present study, each GH6 and GH7 of the *F. ononidis* genome contained a CBM1 family (Supplementary data S3) and CBMs families were also identified in several CAZymes including 11 GHs, 6 CEs, and 1 AA, suggesting that those CAZymes may require CBM for their activities to efficiently degrade substrates.

### 3.6. CEs in *F. ononidis* genome

Esterases act on ester bonds and are widely used in industrial processes [58,59]. CEs are a class of esterases and catalyze the O- or N-deacylation to remove the ester of substituted saccharides [60].

To date, CEs have been classified into 16 families with more than 53,400 classified and 930 non-classified CE sequences in the current CAZy database (<http://www.cazy.org/>). CEs act on diverse substrates including xylan (acetylxylan esterases, EC 3.1.1.72), feruloyl-polysaccharide (feruloyl esterases, EC 3.1.1.73), acetic ester (acetyl esterases, EC 3.1.1.6), peptidoglycan (poly-N-acetylglucosamine deacetylases, EC 3.5.1.104), chitin (chitin deacetylases, EC 3.5.1.41), and pectin (pectinesterase, EC 3.1.1.11) among others [61]. In the present study, a total of 61 CEs classified into 10 families were identified in *F. ononidis* genome based on a dbCAN database search (Figure 2(c) and Supplementary data S3). CE1 families were prominently present with 19 and CE4 family was the second largest family with 11 in the *F. ononidis* genome (Figure 2(c)). However, a relatively low number of CEs were identified by an NCBI-NR search with 23 and 11 CEs commonly identified from the three different databases (Figure 3(e) and Supplementary data S8).

Several characteristic features in the amino acid sequences of CE families have been identified [62].



**Table 4.** CAZymes of *F. ononidis* and other fungal species.

Taxon	Species	AA	GH	GT	CE	CBM	PL	Total	Annotation
Basidiomycota	<i>F. ononidis</i>	87	228	87	61	40	21	524	dbCAN (this study)
	<i>F. velutipes</i>	85	239	84	63	44	25	540	dbCAN (this study)
	<i>A. bisporus</i>	81	174	54	33	44	9	395	JGI
	<i>C. cinerea</i>	111	195	83	60	105	16	570	dbCAN (this study)
	<i>L. bicolor</i>	55	170	96	18	31	7	377	JGI
	<i>L. edodes</i>	82	254	85	44	61	11	537	dbCAN (this study)
	<i>P. chrysosporium</i>	85	175	65	16	62	4	407	JGI
	<i>S. commune</i>	78	241	85	57	37	18	516	dbCAN (this study)
	<i>U. maydis</i>	28	113	61	29	10	2	243	dbCAN (this study)
	<i>C. neoformans</i>	14	97	70	5	12	4	202	CAZy
	Ascomycota	<i>C. militaris</i>	54	165	91	34	39	5	388
<i>T. reesei</i>		59	210	90	32	44	5	440	dbCAN (this study)
<i>S. cerevisiae</i>		5	57	68	2	12	0	144	CAZy
<i>A. nudulans</i>		33	267	91	30	46	23	490	CAZy
<i>N. crassa</i>		35	177	80	21	42	4	359	CAZy
<i>B. cinerea</i>		77	287	119	37	89	10	619	CAZy

Some CE1, CE4, CE5, and CE7 families contain the GX SXG (Gly-Xaa-Ser-Xaa-Gly) conserved motif in their amino acid sequences [62]. However, CE2 and CE3 families contain the Gly-Asp-Ser-(Leu) (GDS[L]) motif in their amino acid sequences [62].

Our results also revealed those conserved motifs in the amino acid sequences of some CE families including CE1, CE3, CE4, and CE5 with GX SXG (Gly-Xaa-Ser-Xaa-Gly) and GDS (Gly-Asp-Ser) (Figure 4(b) and Supplementary data S3). In addition, esterases involved with class C  $\beta$ -lactamases have a Gly-Xaa-Xaa-Leu (GXXL) motif in their amino acid sequences [63,64]. Indeed, all members of the CE16 family identified in the *F. ononidis* genome contained multiple copies of these conserved motifs in their amino acid sequences (Figure 4(c) and Supplementary data S3).

CEs generally facilitate the access of GHs to accelerate the degradation of substrates, thereby leading to saccharification [65]. Therefore, our results suggest that *F. ononidis* having various CE families may be useful for industrial applications that require saccharification, such as food, animal feed, and biofuel production.

### 3.7. AAs in *F. ononidis* genome

The lignin degradation enzymes, such as lytic polysaccharide monooxygenases (LMPOs), are classified into AA families in the CAZy database (<http://www.cazy.org/>). Levasseur et al. [66] reported that the GH61 and CBM33 families were characterized as LPMOs, and these families were reclassified into a new category as AA. These AA families catalyze non-carbohydrate structural components, such as lignin, which is the primary cell wall component of plants [14].

These AAs are classified into 15 families with more than 10,300 classified families based on mainly amino acid sequence similarities in the CAZy database (<http://www.cazy.org/>). The AA members are grouped into eight families of ligninolytic enzymes

and three families of LPMOs. *F. ononidis* contains a total of 11 AA families with 87 AAs in its genome (Figure 2(c) and Supplementary data S3). In addition, our results also show that *F. ononidis* contains the majority members of AA3 (GMC oxidoreductase; alcohol oxidase, aryl-alcohol oxidase/glucose oxidase, cellobiose dehydrogenase, pyranose oxidase), AA7 (glucosylglycosylase), and AA9 (lytic polysaccharide monooxygenase; GH61) family in its genome (Figure 2(c) and Supplementary data S3). Moreover, 54 and 102 associated with AAs were identified by NCBI-NR and Pfam 31.0 database search, respectively (Figure 3(f) and Supplementary data S9) and 33 AAs were commonly identified from the three different databases (Figure 3(f) and Supplementary data S9).

In previous studies, several AA families have been identified to contain the conserved motifs that are required for the interaction with substrates [67–70]. Laccases (EC 1.10.3.2) in the AA1 family (multi-copper oxidase) contain copper-binding motifs of His-Xaa-His-Gly (HXHG), His-Xaa-Xaa-His-Xaa-His (HXXHXH), and His-Cys-His-Xaa(3)-His-Xaa(4)-Met/Leu/Phe (HCHXXXHXXXM/L/F) within their amino acid sequences [67]. It has also been reported that GMC oxidoreductase of the AA3 family possesses the  $\beta$ - $\alpha$ - $\beta$  dinucleotide binding-motif, Gly-Xaa-Gly-Xaa-Xaa-Gly-Xaa<sup>18</sup>-Glu (GXGXXGX<sup>18</sup>E), which interacts with the flavin adenine dinucleotide cofactor [68–70]. Our results also demonstrate that laccases belonging to the AA1 family and most GMC oxidoreductases belonging to the AA3 family contain the copper-binding motif (Figure 4(d) and Supplementary data S3) and the  $\beta$ - $\alpha$ - $\beta$  dinucleotide binding motif (Figure 4(e) and Supplementary data S3) within their amino acid sequences, respectively, suggesting that the AA1 and AA3 families may act as laccase and GMC oxidoreductase on non-carbohydrate structural components.

Plants cell walls often contain a significant amount of lignin (non-carbohydrate structural component), which is an obstacle to the conversion of



biomass (mainly carbohydrates) into bioenergy, such as bioethanol. Several recent studies suggested that the use of microbial enzymes belong to AA members might be useful to degrade the recalcitrant lignin matrix for bioethanol production [71–73]. In the present study, a vast array of genes associated with AA family was identified found in the *F. ononidis* genome. These results suggest the strong potential of *F. ononidis* as a biomaterial and for bioenergy production through the degradation of non-carbohydrate structural components such as the recalcitrant lignin matrix.

### 3.8. CAZyme repertoire of *F. ononidis* and other fungal species

In the present study, analysis of the genome sequence of *F. ononidis* revealed a series of genes associated with GT, GH, PL, CE, AA, and CBM. For genome-wide comparisons, CAZymes of 7 fungal species were further identified by a dbCAN CAZyme database search [37]. In addition, CAZymes of 8 other fungal species were obtained from the CAZy database (<http://www.cazy.org/>) and the JGI Fungi Portal database (<https://genome.jgi.doe.gov/programs/fungi/index.jsf>). Table 4 shows the distribution of the total CAZymes of *F. ononidis* and 15 other fungal species (see also Supplementary data S10).

In CAZyme identification based on the dbCAN database search, 87 GTs were identified from the *F. ononidis* genome and the GT2 family was prominently present, with 11 genes (Figure 2(a) and Supplementary data S3). More than 427,000 classified GT sequences have been divided into 105 families in the CAZy database (<http://www.cazy.org/>), of which more than 132,000 are GT2 family members. Breton et al. [38] reported that not all GTs from various organisms were present in the database, and the number of families will be gradually increased as new GTs are discovered. In the present study, the GT2 family was also prominently present in *F. ononidis* as well as other fungal species, implying that this family is a major component of the GT family of various organisms (Supplementary data S10).

Various members of the GH families were identified in most fungal species including *F. ononidis*. The GH16 family was most abundant, except for some ascomycetes including *C. militaris*, *T. reesei*, *S. cerevisiae*, and *A. nidulans* (Supplementary data S10). In addition, multiple copies of the GH5 and GH18 families in *F. ononidis* were similar to those in some other basidiomycetes. GH5 (formerly cellulase family A) is one of the largest of the GH families and utilizes a variety of substrates, such as cellulase, endomannanase, exoglucanases, exomannanases,  $\beta$ -glucosidase,

and  $\beta$ -mannosidase [74]. GH18 family includes chitinase (EC 3.2.1.14), lysozyme (EC 3.2.1.17), and endo- $\beta$ -N-acetylglucosaminidase (EC 3.2.1.96). Chitinases break down all forms of chitin at varying rates depending on the enzyme and the substrate [75]. Recently, various genes related to the degradation of cellulose, chitin, and xylan have been identified in the bacterial genome, suggesting industrial applicability, such as biopolymer degradation [76–78]. In addition to bacteria, several fungi also show high hydrolytic activity toward polysaccharides due to their degradation machinery [48,79,80]. Thus, the various GHs revealed in the *F. ononidis* genome as well as the various fungi suggests the potential for biotechnology applications.

Zhao et al. [80] reported that some PL families are phylum-specific, among which PL10 and PL11 are ascomycetes-specific, with PL15 only in basidiomycetes. In the present study, PL family 11 and 15 were found only in *A. nidulans* (ascomycete) and *C. cinerea* (basidiomycete), respectively. However, most of the other fungal species have no PL family 11 or 15. Moreover, our results revealed that PL5, -14, and -24 families are basidiomycetes-specific (Supplementary data S10). To date, all characterized pectin lyases belong to the PL1 family, and the fungal pectate lyases belong to families PL1, PL3, and PL9 (CAZy database). Our results showed that PL family 1 and 3 comprised the majority of PLs of *F. ononidis* as well as that of other fungal species. However, most fungal species did not have the PL9 family. This family was only found in *F. ononidis*, *F. velutipes* [16], *S. commune* [34], *C. militaris* [27], and *A. nidulans* [23] (Supplementary data S10). Xavier-Santos et al. [54] reported that *S. commune* (basidiomycete) produced higher polygalacturonase than *A. niger* in wheat bran cultures. Thus, because of their diverse roles in the environment, there is a compelling reason to discover new PLs with unique properties from the basidiomycetes.

*F. ononidis* does not have a unique CBM in its genome, but the distribution of multiple copies of the CBM1, CBM13, and CBM50 CBM is similar to some other fungal species. However, the abundance of some families differed between basidiomycetes and ascomycetes. Ascomycetes had more CBM18 family members than other basidiomycetes and the CBM5 and CBM12 families were not observed in all ascomycetes (Supplementary data S10). Zhao et al. [80] also demonstrated that ascomycetes have more CBM18 family members than basidiomycetes, while CBM5 and CBM12 have less. Interestingly, the distribution of CBM in fungal species showed that the largest number of CBMs, including 52 CBM family 1, were found in the coprophilic fungus *C. cinerea* genome. Fernandez-Fueyo et al. [71] also observed a

vast array of genes associated with CBMs including CBM family 1 in *C. cinerea* genome.

The total number of CEs in *F. ononidis* was similar with that of *F. velutipes*, and the CE1, CE4, and CE16 families were prominently present in *F. ononidis* and other basidiomycetes. Presently, the abundance of the CE family also varied in some basidiomycetes and ascomycetes. For example, only 5 CEs, including 4 CE4 and 1 CE9 families, and 2 CE4 family members have been found in *C. neoformans* and *S. cerevisiae* (Supplementary data S10). In the CAZyme prediction against the dbCAN database, various CE classified in the CE10 family were identified in the *F. ononidis* genome (data not shown). However, all of the CE10 family members were not included in the study because they were found to act on non-carbohydrate substrates [15].

The total number of AAs in *F. ononidis* was similar to that of other white rot fungus, such as *F. velutipes* (white rot) [16], *L. edodes* (white rot) [30], *S. commune* (white rot-like) [34], and *P. chrysosporium* (white rot) [32], but not *C. cinerea* (white rot) [26] (Table 4 and Supplementary data S10). In addition, fungal species including *L. bicolor* (ectomycorrhizal fungus) [29], *U. maydis* (plant pathogen) [36], and *C. neoformans* (yeast) [28] have fewer AAs than other basidiomycetes. Unicellular and lipophilic fungi, such as *C. neoformans*, *Rhodotorula glutinis*, and *Walleimia sebi*, possess very few genes encoding polysaccharide degrading enzymes [14]. It has also been suggested that *U. maydis* possesses at least a gene encoding a polysaccharide degrading enzyme due to plant defense responses [32,36].

As described above, various members of CAZyme were identified in the *F. ononidis* genome including 228 GHs, 21 PLs, 61 CEs, and 87 AAs associated with polysaccharide and lignin degradation (Table 4). Our results reveal that the distribution of this CAZyme repertoire in *F. ononidis* is comparable to those of other basidiomycetes. Although further studies of these CAZymes are needed, the present study suggests that *F. ononidis* degradation machinery has great potential for industrial and biotechnological applications, such as food, paper, textile, animal feed, and other chemicals, including biofuels.

### Disclosure statement

No potential conflict of interest was reported by the authors.

### Funding

This research was supported by the Basic Science Research Program of the National Research Foundation of Korea (NRF), funded by the Ministry of Education (2016R1D1A1B03930808).

### ORCID

Young-Jin Park  <http://orcid.org/0000-0002-8392-4772>

### References

- [1] Arnolds E. Einige Pilze eines Halbtrockenrasen bei Detmold (Westfalen). Westfäl Pilzbrieft. 1977;11: 29–39.
- [2] Ripková S, Adamčík S, Kučera V. *Flammulina ononidis* – a new species for Slovakia. Czech Mycol. 2008;60:221–230.
- [3] Łuszczynski J, Łuszczynska B, Tomaszewska A. *Flammulina ononidis* – first record in Poland. Acta Mycol. 2014;49:79–85.
- [4] Ripková S, Hughes K, Adamčík S, et al. The delimitation of *Flammulina fennae*. Mycol Progress. 2010;9:469–484.
- [5] Hughes KW, McGhee LL, Methven AS, et al. Patterns of geographic speciation in the genus *Flammulina* based on sequences of the ribosomal ITS1-5.8S-ITS2 area. Mycologia. 1999;91:978–986.
- [6] Psurtseva NV. Culture of *Flammulina velutipes* (Fr.) P.Karst. (biology and economic importance. Mikol. i Fitopatol. 1987;21:477–486.
- [7] Klan J, Baudisova D. Cultural, enzyme and genetic studies in the genus *Flammulina* Karst. Mycotaxon. 1992;43:341–350.
- [8] Nobles MJ. Identification of cultures of wood inhabiting Hymenomycetes. Can J Bot. 1965;26: 281–413.
- [9] Marr CD. Laccase and peroxidase oxidation of spot test reagents. Mycotaxon. 1979;9:244–276.
- [10] Alekhina I, Psurtseva N, Yli-Mattila T. Isozyme analysis of LE(BIN) Collection *Flammulina* strains. Karstenia. 2001;41:55–63.
- [11] Psurtseva NY, Mnoukhina AY. Morphological, physiological and enzyme variability of *Flammulina* P. Karst. cultures. Mikol i Fitopatol. 1998;32:49–54.
- [12] Pérez-Butrón JL, Ferdnández-Vicente J. Una nueva especie de *Flammulina* P. Karsten, *F. cephalariae* (Agaricales) encontrada en España. Rev Catalana Micol. 2007;29:81–91.
- [13] Eriksson K, Blanchette RA, Ander P. Microbial and enzymatic degradation of wood and wood components. Berlin, Germany: Springer-Verlag; 1990.
- [14] Rytioja J, Hildén K, Yuzon J, et al. Plant-polysaccharide-degrading enzymes from basidiomycetes. Microbiol Mol Biol Rev. 2014;78:614–649.
- [15] Lombard V, Golaconda Ramulu H, Drula E, et al. The carbohydrate-active enzymes database (CAZy) in 2013. Nucleic Acids Res. 2014;42:D490–D495.
- [16] Park YJ, Baek JH, Lee S, et al. Whole genome and global gene expression analyses of the model mushroom *Flammulina velutipes* reveal a high capacity for lignocellulose degradation. PLoS One. 2014;9:e93560.
- [17] Bolger AM, Lohse M, Usadel B. Trimmomatic: a flexible trimmer for Illumina sequence data. Bioinformatics. 2014;30:2114–2120.
- [18] Zerbino DR, Birney E. Velvet: algorithms for de novo short read assembly using de Bruijn graphs. Genome Res. 2008;18:821–829.
- [19] Stanke M, Morgenstern B. AUGUSTUS: a web server for gene prediction in eukaryotes that allows

- user-defined constraints. *Nucleic Acids Res.* 2005; 33:W465–W467.
- [20] Buchfink B, Xie C, Huson D. Fast and sensitive protein alignment using DIAMOND. *Nat Methods.* 2015;12:59–60.
- [21] Finn RD, Coghill P, Eberhardt R, et al. The Pfam protein families database: towards a more sustainable future. *Nucleic Acids Res.* 2016;44: D279–D285.
- [22] Emms D, Kelly S. OrthoFinder: solving fundamental biases in whole genome comparisons dramatically improves orthogroup inference accuracy. *Genome Biol.* 2015;16:157.
- [23] Galagan JE, Calvo SE, Cuomo C, et al. Sequencing of *Aspergillus nidulans* and comparative analysis with *A. fumigatus* and *A. oryzae*. *Nature.* 2005;438: 1105–1115.
- [24] Staats M, van Kan JA. Genome update of *Botrytis cinerea* strains B05.10 and T4. *Eukaryot Cell.* 2012; 11:1413–1414.
- [25] Morin E, Kohler A, Baker AR, et al. Genome sequence of the button mushroom *Agaricus bisporus* reveals mechanisms governing adaptation to a humic-rich ecological niche. *Proc Natl Acad Sci USA.* 2012;109:17501–17506.
- [26] Stajich JE, Wilke SK, Ahrén D, et al. Insights into evolution of multicellular fungi from the assembled chromosomes of the mushroom *Coprinopsis cinerea* (*Coprinus cinereus*). *Proc Natl Acad Sci USA.* 2010;107:11889–11894.
- [27] Zheng P, Xia Y, Xiao G, et al. Genome sequence of the insect pathogenic fungus *Cordyceps militaris*, a valued traditional Chinese medicine. *Genome Biol.* 2011;12:R116.
- [28] Janbon G, Ormerod K, Paulet D, et al. Analysis of the genome and transcriptome of *Cryptococcus neoformans* var. *grubii* reveals complex RNA expression and microevolution leading to virulence attenuation. *PLOS Genet.* 2014;10:e1004261.
- [29] Martin F, Aerts A, Ahrén D, et al. The genome of *Laccaria bicolor* provides insights into mycorrhizal symbiosis. *Nature.* 2008;452:88–92.
- [30] Chen L, Gong Y, Cai Y, et al. Genome sequence of the edible cultivated mushroom *Lentinula edodes* (Shiitake) reveals insights into lignocellulose degradation. *PLoS One.* 2016;11:e0160336.
- [31] Galagan JE, Calvo SE, Borkovich KA, et al. The genome sequence of the filamentous fungus *Neurospora crassa*. *Nature.* 2003;422:859–868.
- [32] Martinez D, Larrondo LF, Putnam N, et al. Genome sequence of the lignocellulose degrading fungus *Phanerochaete chrysosporium* strain RP78. *Nat Biotechnol.* 2004;22:695–700.
- [33] Fisk DG, Ball CA, Dolinski K, et al. *Saccharomyces cerevisiae* S288C genome annotation: a working hypothesis. *Yeast.* 2006;23:857–865.
- [34] Ohm RA, De Jong JF, Lugones L, et al. Genome sequence of the model mushroom *Schizophyllum commune*. *Nat Biotechnol.* 2010;28:957–963.
- [35] Li WC, Huang CH, Chen CL, et al. *Trichoderma reesei* complete genome sequence, repeat-induced point mutation, and partitioning of CAZyme gene clusters. *Biotechnol Biofuels.* 2017;10:170.
- [36] Kämper J, Kahmann R, Bölker M, et al. Insights from the genome of the biotrophic fungal plant pathogen *Ustilago maydis*. *Nature.* 2006;444: 97–101.
- [37] Yin Y, Mao X, Yang JC, et al. dbCAN: a web resource for automated carbohydrate-active enzyme annotation. *Nucleic Acids Res.* 2012;40: W445–W451.
- [38] Breton C, Šnajdrová L, Jeanneau C, et al. Structures and mechanisms of glycosyltransferases. *Glycobiology.* 2006;16:29R–37R.
- [39] Lairson LL, Henrissat B, Davies GJ, et al. Glycosyltransferases: structures, functions, and mechanisms. *Annu Rev Biochem.* 2008;77:521–555.
- [40] Coutinho PM, Deleury E, Davies GJ, et al. An evolving hierarchical family classification for glycosyltransferases. *J Mol Biol.* 2003;328:307–317.
- [41] Campbell JA, Davies GJ, Bulone V, et al. A classification of nucleotide-diphospho-sugar glycosyltransferases based on amino acid sequence similarities. *Biochem J.* 1997;326:929–939.
- [42] Mukai Y, Hirokawa T, Tomii K, et al. Identification of glycosyltransferases focusing on Golgi transmembrane region. *Tigg.* 2007;19:41–47.
- [43] Berlemont R, Martiny AC. Glycoside hydrolases across environmental microbial communities. *PLoS Comput Biol.* 2016;12:e1005300.
- [44] Henrissat B. A classification of glycosyl hydrolases based on amino acid sequence similarities. *Biochem J.* 1991;280:309–316.
- [45] Hahn M, Olsen O, Politz O, et al. Crystal structure and site-directed mutagenesis of *Bacillus macerans* endo-1,3-1,4-beta-glucanase. *J Biol Chem.* 1995; 270:3081–3088.
- [46] Masuda S, Endo K, Koizumi N, et al. Molecular identification of a novel beta-1,3-glucanase from alkaliphilic *Nocardiopsis* sp. strain F96. *Extremophiles.* 2006;10:251–255.
- [47] Kotake T, Hirata N, Degi Y, et al. Endo-beta-1,3-galactanase from winter mushroom *Flammulina velutipes*. *J Biol Chem.* 2011;286:27848–27854.
- [48] Berlemont R. Distribution and diversity of enzymes for polysaccharide degradation in fungi. *Sci Rep.* 2017;7:222.
- [49] Sutherland IW. Polysaccharide lyases. *FEMS Microbiol Rev.* 1995;16:323–347.
- [50] Yip VL, Withers SG. Breakdown of oligosaccharides by the process of elimination. *Curr Opin Chem Biol.* 2006;10:147–155.
- [51] van den Brink J, de Vries RP. Fungal enzyme sets for plant polysaccharide degradation. *Appl Microbiol Biotechnol.* 2011;91:1477–1492.
- [52] Garron ML, Cygler M. Structural and mechanistic classification of uronic acid-containing polysaccharide lyases. *Glycobiology.* 2010;20:1547–1573.
- [53] Linhardt RJ, Galliher PM, Cooney CL. Polysaccharide lyases. *Appl Biochem Biotechnol.* 1986;12:135–176.
- [54] Xavier-Santos S, Carvalho CC, Bonfá M, et al. Screening for pectinolytic activity of wood-rotting basidiomycetes and characterization of the enzymes. *Folia Microbiol.* 2004;49:46–52.
- [55] Boraston AB, Bolam DN, Gilbert HJ, et al. Carbohydrate-binding modules: fine-tuning polysaccharide recognition. *Biochem J.* 2004;382: 769–781.
- [56] Shoseyov O, Shani Z, Levy I. Carbohydrate binding modules: biochemical properties and novel applications. *Microbiol Mol Biol Rev.* 2006;70: 283–295.

- [57] Várnai A, Mäkelä MR, Djajadi DT, et al. Carbohydrate-binding modules of fungal cellulases: occurrence in nature, function, and relevance in industrial biomass conversion. *Adv Appl Microbiol.* 2014;88:103–165.
- [58] Bornscheuer UT. Microbial carboxyl esterases: classification, properties and application in biocatalysis. *FEMS Microbiol Rev.* 2002;26:73–81.
- [59] Jaeger KE, Eggert T. Lipases for biotechnology. *Curr Opin Biotechnol.* 2002;13:390–397.
- [60] Cantarel BL, Coutinho PM, Rancurel C, et al. The Carbohydrate-Active EnZymes database (CAZy): an expert resource for glycogenomics. *Nucleic Acids Res.* 2009;37:D233–D238.
- [61] Biely P. Microbial carbohydrate esterases deacetylating plant polysaccharides. *Biotechnol Adv.* 2012;30:1575–1588.
- [62] Adesioye FA, Makhalyane TP, Biely P, et al. Phylogeny, classification and metagenomic bio-prospecting of microbial acetyl xylan esterases. *Enzyme Microb Technol.* 2016;93–94:79–91.
- [63] Wei Y, Schottel JL, Derewenda U, et al. A novel variant of the catalytic triad in the *Streptomyces scabies* esterase. *Nat Struct Biol.* 1995;2:218–223.
- [64] Petersen EI, Valinger G, Sölkner B, et al. A novel esterase from *Burkholderia gladioli* which shows high deacetylation activity on cephalosporins is related to beta-lactamases and DD-peptidases. *J Biotechnol.* 2001;89:11–25.
- [65] Christov LP, Prior BA. Esterases of xylan-degrading microorganisms: production, properties, and significance. *Enzyme Microb Technol.* 1993;15:460–475.
- [66] Levasseur A, Drula E, Lombard V, et al. Expansion of the enzymatic repertoire of the CAZy database to integrate auxiliary redox enzymes. *Biotechnol Biofuels.* 2013;6:41.
- [67] Reiss R, Ihssen J, Richter M, et al. Laccase versus laccase-like multi-copper oxidase: a comparative study of similar enzymes with diverse substrate spectra. *PloS One.* 2013;8:e65633.
- [68] Fernandez IS, Ruiz-Duenas FJ, Santillana E, et al. Novel structural features in the GMC family of oxidoreductases revealed by the crystal structure of fungal aryl-alcohol oxidase. *Acta Crystallogr D Biol Crystallogr.* 2009;65:1196–1205.
- [69] Varela E, Jesús Martínez M, Martínez AT, Arylalcohol oxidase protein sequence: a comparison with glucose oxidase and other FAD oxidoreductases. *Biochem Biophys Acta Protein Struct Mol Enzymol.* 2000;1481:202–208.
- [70] Wierenga RK, Drenth J, Schulz GE, et al. Comparison of the 3-dimensional protein and nucleotide structure of the FAD-binding domain of parahydroxybenzoate hydroxylase with the FAD-binding as well as NADPH-binding domains of glutathionereductase. *J Mol Biol.* 1983;167:725–739.
- [71] Fernandez-Fueyo E, Ruiz-Duenas FJ, Ferreira P, et al. Comparative genomics of *Ceriporiopsis subvermispora* and *Phanerochaete chrysosporium* provide insight into selective ligninolysis. *Proc Natl Acad Sci USA.* 2012;109:5458–5463.
- [72] Martínez AT, Ruiz-Dueñas FJ, Martínez MJ, et al. Enzymatic delignification of plant cell wall: from nature to mill. *Curr Opin Biotechnol.* 2009;20:348–357.
- [73] Ruiz-Dueñas FJ, Martínez AT. Microbial degradation of lignin: how a bulky recalcitrant polymer is efficiently recycled in nature and how we can take advantage of this. *Microb Biotechnol.* 2009;2:164–177.
- [74] Henrissat B, Claeyssens M, Tomme P, et al. Cellulase families revealed by hydrophobic cluster analysis. *Gene.* 1989;81:83–95.
- [75] The CAZyPedia Consortium. Ten years of CAZyPedia: a living encyclopedia of carbohydrate-active enzymes. *Glycobiology.* 2018;28:3–8.
- [76] Berlemont R, Martiny AC. Phylogenetic distribution of potential cellulases in bacteria. *Appl Environ Microbiol.* 2013;79:1545–1554.
- [77] Berlemont R, Martiny AC. Genomic potential for polysaccharides deconstruction in bacteria. *Appl Environ Microbiol.* 2015;81:1513–1519.
- [78] Talamantes D, Biabini N, Dang H, et al. Natural diversity of cellulases, xylanases, and chitinases in bacteria. *Biotechnol Biofuels.* 2016;9:133.
- [79] Eichlerová I, Homolka L, Žifčáková L, et al. Enzymatic systems involved in decomposition reflects the ecology and taxonomy of saprotrophic fungi. *Fungal Ecol.* 2015;13:10–22.
- [80] Treseder KK, Lennon JT. Fungal traits that drive ecosystem dynamics on land. *Microbiol Mol Biol Rev.* 2015;79:243–262.
- [81] Zhao Z, Liu H, Wang C, et al. Comparative analysis of fungal genomes reveals different plant cell wall degrading capacity in fungi. *BMC Genomics.* 2013;14:274.