

Reactive oxygen species-dependent apoptosis induction by water extract of *Citrus unshiu* peel in MDA-MB-231 human breast carcinoma cells

Min Yeong Kim^{1,2}, Eun Ok Choi^{1,2}, Hyun HwangBo^{1,2}, Da He Kwon^{1,2}, Kyu Im Ahn^{1,2,3}, Hong Jae Kim^{1,2}, Seon Yeong Ji^{1,2}, Su-Hyun Hong^{1,2}, Jin-Woo Jeong^{1,2}, Gi Young Kim³, Cheol Park⁴ and Yung Hyun Choi^{1,2,5}

¹Open Laboratory for Muscular and Skeletal Disease, and Department of Biochemistry, Donggeui University College of Korean Medicine, 42 San, Yangjungdong, Busan 47227, Korea

²Anti-Aging Research Center, Donggeui University, Busan 47340, Korea

³Laboratory of Immunobiology, Department of Marine Life Sciences, Jeju National University, Jeju 63243, Korea

⁴Department of Molecular Biology, College of Natural Sciences, Donggeui University, Busan 47340, Korea

BACKGROUND/OBJECTIVES: Although several recent studies have reported the anti-cancer effects of extracts or components of *Citrus unshiu* peel, which has been used for various purposes in traditional medicine, the molecular mechanisms for their effects remain unclear. In the present study, the anti-cancer activity of a water-soluble extract of *C. unshiu* peel (WECU) in MDA-MB-231 human breast carcinoma cells at the level of apoptosis induction was investigated.

MATERIALS/METHODS: Cytotoxicity was evaluated using the MTT assay. Apoptosis was detected using DAPI staining and flow cytometry analyses. Mitochondrial membrane potential, reactive oxygen species (ROS) assay, caspase activity and Western blotting were used to confirm the basis of apoptosis.

RESULTS: The results indicated that WECU-induced apoptosis was related to the activation of caspase-8, and -9, representative initiator caspases of extrinsic and intrinsic apoptosis pathways, respectively, and caspase-3 accompanied by proteolytic degradation of poly(ADP-ribose) polymerase and down-regulation of the inhibitors of apoptosis protein family members. WECU also increased the pro-apoptotic BAX to anti-apoptotic BCL-2 ratio, loss of mitochondrial membrane potential and cytochrome c release from mitochondria to cytoplasm. Furthermore, WECU provoked the generation of ROS, but the reduction of cell viability and induction of apoptosis by WECU were prevented when ROS production was blocked by antioxidant N-acetyl cysteine.

CONCLUSIONS: These results suggest that WECU suppressed proliferation of MDA-MB-231 cells by activating extrinsic and intrinsic apoptosis pathways in a ROS-dependent manner.

Nutrition Research and Practice 2018;12(2):129-134; <https://doi.org/10.4162/nrp.2018.12.2.129>; pISSN 1976-1457 eISSN 2005-6168

Keywords: *Citrus unshiu*, apoptosis, caspase, cytotoxicity, ROS

INTRODUCTION

Breast cancer is one of the world's most prevalent female cancers and is also a leading cause of cancer deaths in women [1]. Currently, breast cancer is mainly treated by surgery and radiation therapy, and adjuvant chemotherapy or hormone therapy is used in parallel. Although advances in recent therapies have increased survival rates for women with breast cancer, the incidence and mortality rates for breast cancer have also increased rapidly in both developed and developing countries [2,3]. Therefore, greater understanding of the basic mechanisms of breast cancer progression and new and effective therapies for breast cancer prevention and treatment are needed.

Recently, certain natural compounds have been extensively

used for the purpose of chemoprevention through induction of cancer cell specific apoptosis and removal of the malignant tumor [4-6]. Reconsideration of natural medicines, particularly those that have been used for many years in traditional medicines, has attracted a great deal of attention in research for new anti-cancer drugs [7,8]. Peels of *Citrus unshiu* Markovich, which belongs to the Rutaceae family, have long been used as traditional medicines for various therapeutic purposes. Recent studies have reported that their extracts and components have anti-inflammatory, antioxidant, anti-allergic, anti-diabetic and antiviral effects [9-12]. In a study of anti-cancer activity using a tumor-bearing mouse model, *C. unshiu* peel extract was shown to inhibit tumor growth associated with increased production of cytokines, such as interferon- γ and tumor necrosis

This work has been financially supported by the Basic Science Research Program through the National Research Foundation of Korea (NRF) grant funded by the Korea government (2015R1A2A2A01004633).

⁵ Corresponding Author: Yung Hyun Choi, Tel. 82-51-850-7413, Fax. 82-51-853-4036, Email: choiyh@deu.ac.kr

Received: October 26, 2017, Revised: November 10, 2017, Accepted: January 29, 2018

This is an Open Access article distributed under the terms of the Creative Commons Attribution Non-Commercial License (<http://creativecommons.org/licenses/by-nc/3.0/>) which permits unrestricted non-commercial use, distribution, and reproduction in any medium, provided the original work is properly cited.

factor- α [13]. In another recent study, *C. unshiu* peel has been reported to reduce systemic inflammation in tumor-bearing rats and prevent pro-inflammatory and pro-cachectic factors production in tumors, which was connected with the prevention of skeletal muscle atrophy and weight loss [14]. It was also reported that flavonoids or polysaccharides found in *C. unshiu* peel suppressed the metastasis of cancer cells [15,16]; however, the mechanism and relevant mechanism of the anticancer effects associated with apoptosis of *C. unshiu* are still unknown. In this study, as part of our research to search for anti-cancer active ingredients from traditional medicinal resources, the effect of a water-soluble extract of *C. unshiu* peel (WECU) on MDA-MB-231 human breast cancer cells was investigated.

MATERIALS AND METHODS

Preparation of WECU

Dried peels of *C. unshiu* were obtained from Dongeui Korean Medical Center (Busan, Republic of Korea) and pulverized into a fine powder. The powders were boiled with distilled water for 3 h. The extract was filtered with a 0.45 μ m filter to remove insoluble materials, and the filtrate was lyophilized with a vacuum rotary evaporator (BUCHI, Switzerland); the residue was freeze-dried in a freezing-dryer, and then stored at -80°C . The extracts (WECU) were dissolved in dimethyl sulfoxide (DMSO, Sigma-Aldrich Chemical Co., St. Louis, MO, USA) to a final concentration of 500 mg/mL (extract stock solution), which was stored at 4°C . The stock solution was diluted with the medium to the desired concentrations, prior to use.

Cell culture

MDA-MB-231 human breast carcinoma cells were obtained from the American Type Culture Collection (Manassas, VA, USA). The cells were maintained in an RPMI 1640 medium (WelGENE Inc., Daegu, Republic of Korea) supplemented with 10% fetal bovine serum (FBS), 2 mM L-glutamine, 100 U/mL penicillin, and 100 mg/mL streptomycin at 37°C in a humidified atmosphere with 5% CO_2 .

Cell viability assay

To assess the effect of WECU on cell growth, the cells were seeded in 6-well plates at a density of 2×10^4 cells per well. After incubation for 24 h, the cells were treated with various concentrations of WECU for 72 h. At the end of this time, a 3-(4,5-dimethylthiazol-2-yl)-2,5-diphenyltetrazolium bromide (MTT, Sigma-Aldrich Chemical Co.) solution was added to each well, at a concentration of 0.5 mg/mL, and the cells were additionally incubated at 37°C for 3 h. The MTT solution was carefully removed, and, after solubilization of formazan crystal by DMSO, the optical density (OD) of the converted dye was measured at 540 nm using an enzyme-linked immunosorbent assay (ELISA) microplate reader (Dynatech Laboratories, Chantilly, VA, USA). The OD of the formazan formed in the control (untreated) cells was used to represent 100% viability. The experiment was performed in triplicate, and the results are indicative of three independent studies. To evaluate morphological changes after WECU treatment, photographs of the cells were taken using an inverted light microscope (Carl Zeiss, Oberkochen, Germany).

Detection of apoptosis via DAPI staining

After treatment with WECU, the cells were harvested, washed with a phosphate-buffered saline (PBS), twice, and fixed with 3.7% paraformaldehyde (Sigma-Aldrich Chemical Co.) in PBS for 10 min at 25°C . The cells were washed with PBS, stained with 1.0 mg/mL of 4',6-diamidino-2-phenylindole (DAPI, Sigma-Aldrich Chemical Co.) solution for 10 min and then washed twice with PBS. The morphology changes in the nucleus were examined using a fluorescence microscope (Carl Zeiss).

Assessment of apoptosis by flow cytometry

To determine the magnitude of the apoptosis by WECU, an Annexin V-fluorescein isothiocyanate (FITC) apoptosis detection kit (BD Pharmingen, San Diego, CA, USA) was used. In brief, the cells were harvested, washed with PBS and binding buffer, and then stained with FITC-conjugated annexin V and propidium iodide (PI) for 20 min in the dark. The mixture was then analyzed using a flow cytometer (Becton Dickinson, San Jose, CA, USA) according to the manufacturer's protocol. At least 10,000 stained cells were analyzed from each sample. The annexin/PI⁻ cell population was considered as normal, while the annexin V-FITC⁺/PI⁻ and annexin⁺/PI⁺ cell populations were considered as indicators of early and late apoptotic cells, respectively [17].

Western blot analysis

Following the WECU treatment, the cells were collected and lysed, and the protein concentrations were quantified using a Bio-Rad protein assay (Bio-Rad Lab., Hercules, CA, USA), as described in a previous study [18]. In a parallel experiment, the mitochondrial and cytosolic fractions were isolated using a mitochondria isolation kit (Active Motif, Carlsbad, CA, USA) according to the manufacturer's instructions. For Western blotting, equal amounts of cell lysates were electrophoresed on sodium-dodecyl sulfate (SDS)-polyacrylamide gels and electrophoretically transferred onto polyvinylidene fluoride (PVDF) membranes (Schleicher & Schuell, Keene, NH, USA). After blocking with 5% bovine serum albumin (BSA) in the mixture of Tris-Buffered Saline and Tween-20 (TBST) for 1 h, the membranes were probed with specific primary antibodies at 4°C overnight, followed by incubation with the appropriate horseradish peroxidase (HRP)-conjugated secondary antibodies for 1 h at room temperature. The protein bands were visualized using an enhanced chemiluminescence (ECL) assay kit (Amersham Biosciences, Westborough, MA, USA) as per the manufacturer's instructions. Primary antibodies were purchased from Santa Cruz Biotechnology, Inc. (Santa Cruz, CA, USA) and Cell Signaling Technology, Inc. (Danvers, MA, USA). HRP-conjugated secondary antibodies and the enhanced chemiluminescence (ECL) kit were obtained from Amersham Biosciences (Westborough, MA, USA).

Assay for caspases activity

The activities of the caspases (caspase-3, -8 and -9) were determined using colorimetric assay kits (R&D Systems, Minneapolis, MN, USA), following the manufacturer's protocol. Briefly, the cells were lysed in the supplied lysis buffer, and equal amounts of proteins were incubated with the supplied reaction buffer, containing dithiothreitol and tetrapeptides as substrates

for each caspase, at 37°C for 2 h in the dark. The reactions were measured by changes in absorbance at 405 nm using an ELISA reader.

Measurement of mitochondrial membrane potential (MMP, $\Delta\psi_m$)

The MMP changes were determined by measuring the retention of a dual-emission potential-sensitive probe, 5,5',6,6'-tetrachloro-1,1',3,3'-tetraethyl-imidacarbocyanine iodide (JC-1, Sigma-Aldrich Chemical Co.). In brief, the WECU-treated cells were washed with PBS and incubated with 10 μ M JC-1 for 20 min at 37°C in the dark. The cells were then collected by centrifugation and washed twice with PBS to remove unbound dye. The MMP values were measured at 488 nm and 575 nm using a flow cytometer by following the manufacturer's protocol.

Detection of reactive oxygen species (ROS) accumulation

In order to detect the production of intracellular ROS, 2',7'-dichlorofluorescein diacetate (DCF-DA, Molecular Probes, Leiden, Netherlands) was used as described elsewhere [19]. Cells were treated with WECU for a certain period of time and then the cells were harvested, washed and re-suspended in 10 μ M DCF-DA solution. The cells were then incubated at 37°C for 20 min in a dark room before being analyzed by a flow cytometer. The values were expressed as a percentage of fluorescence intensity relative to the blank control cells. The stained cells were also mounted on the chamber slide with a mounting medium. The images were obtained on a fluorescence microscope. To confirm whether intracellular ROS levels play any role in the WECU-induced cytotoxicity, cells were pretreated with N-acetyl-L-cysteine (NAC, Sigma-Aldrich Chemical Co.), a well-established antioxidant, for 1 h prior to treatment with WECU.

Data analysis

Experiments were carried out at least in triplicate, and results were expressed as mean \pm standard deviation (SD). Significant differences between mean values were analyzed using the Student's t-test.

RESULTS

WECU inhibits cell viability and induces apoptosis in MDA-MB-231 cells

The effect of WECU on the cell viability of MDA-MB-231 cells was determined by the MTT assay. As shown in Fig. 1A, the cell viability was reduced by WECU in a concentration-dependent manner, with the various morphological changes including membrane blebbing, diminished cell density, and an increased number of floating cells (Fig. 1B). To investigate whether the reduction of cell viability by WECU could be linked to apoptosis, nuclear morphological changes and flow cytometry analysis were performed. As expected, WECU-treated cells showed remarkable changes, such as nuclear fragmentation and chromatin condensation (Fig. 1C). In addition, when cells were treated with WECU, the apoptotic rate was significantly increased in comparison to that of the untreated control cells (Fig. 1D), indicating that WECU suppressed cell viability by inducing apoptosis in MDA-MB-231 cells.

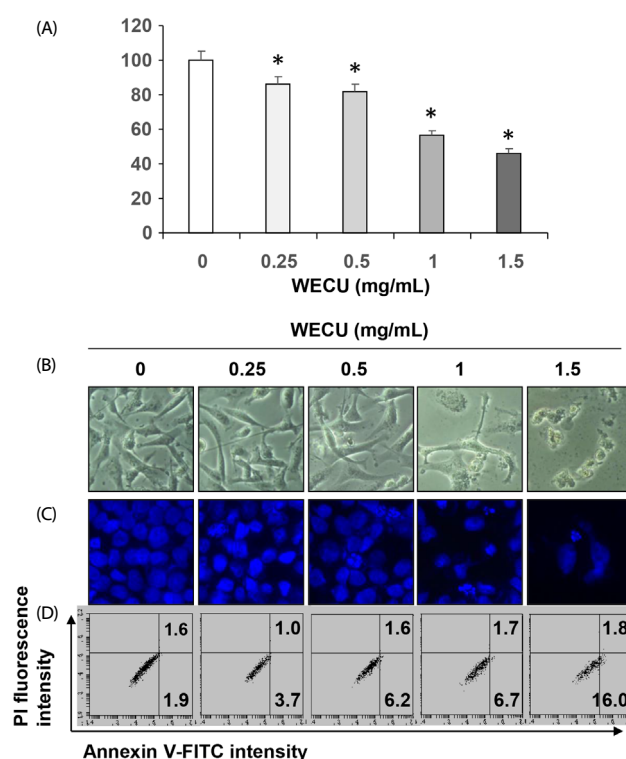


Fig. 1. Inhibition of cell viability and induction of apoptosis by WECU in MDA-MB-231 cells. MDA-MB-231 cells were treated with various concentrations of WECU for 72 h. (A) The cell viability was measured by an MTT assay. The data were expressed as the means \pm SD of three independent experiments (* P < 0.05 vs. untreated control). (B) The morphological changes of MDA-MB-231 cells treated with WECU in various concentrations were observed under an inverted microscope (magnification, \times 200). (C) The cells were stained with DAPI, and then the nuclei were photographed with a fluorescence microscope using a blue filter (magnification, \times 400). (D) The percentages of annexin V-FITC positive cells in the top (PI negative) and bottom (PI positive) right quadrant were indicated. Each point represents the means of two independent experiments.

WECU enhances activation of caspases and degradation of PARP in MDA-MB-231 cells

To explore whether WECU induces apoptosis by activation of caspases, the effects of WECU on the expression and activity of caspases were investigated. The immunoblotting results showed that expression of pro-caspase-8 and -9, representative initiator caspases of the extrinsic and intrinsic apoptosis pathways, respectively, was apparently decreased with increasing WECU concentrations, while their active forms were increased (Fig. 2A). WECU treatment also caused the activation of caspase-3 in a concentration-dependent manner, and the typical 89 kDa cleaved fragment of poly(ADP-ribose) polymerase (PARP), occurred in WECU-exposed MDA-MB-231 cells. In this process, the expression of inhibitors of apoptosis (IAP) family proteins, such as cIAP-1, cIAP-2 and XIAP, was suppressed by WECU treatment. Consistent with the Western blot analysis results, the *in vitro* activity of these caspases was significantly enhanced by WECU treatment (Fig. 2B), indicating that both apoptosis pathways might be activated during induction of apoptosis by WECU.

WECU modulates the expression of BCL-2 family proteins in MDA-MB-231 cells

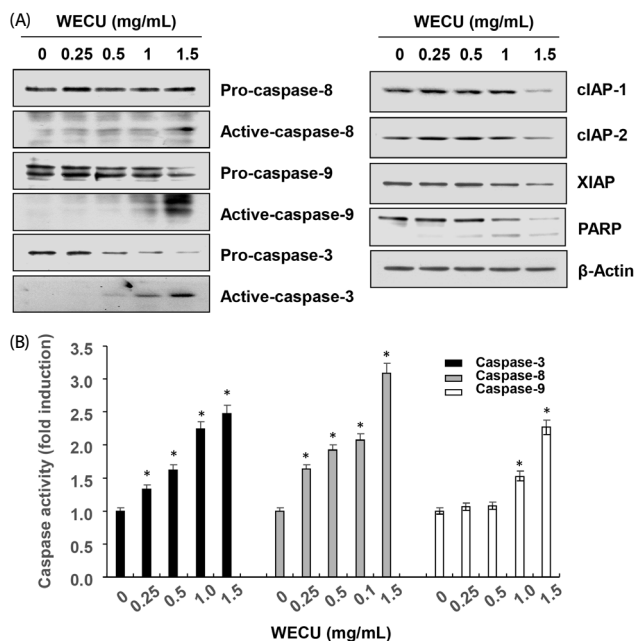


Fig. 2. Activation of caspases and inhibition of IAP family proteins expression by WECU in MDA-MB-231 cells. MDA-MB-231 were treated with the indicated concentrations of WECU for 72 h. (A) The equal amounts of cellular proteins were probed with the indicated antibodies, and the proteins were visualized using an ECL detection system, Actin was used as an internal control. (B) The activities of the caspases were evaluated using caspases assay kits. The data were expressed as the means ± SD of three independent experiments (* $P < 0.05$ vs, untreated control).

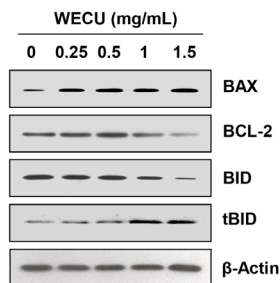


Fig. 3. Effects of WECU on the levels of BCL-2 family proteins in MDA-MB-231 cells. After 72 h incubation with the indicated concentrations of WECU, the cellular proteins were probed with anti-BAX, anti-BCL-2 and anti-BID antibodies. Equal protein loading was confirmed by analysis of actin in the protein extracts.

As shown in Fig. 3, the expression of pro-apoptotic BAX was increased by WECU treatment, whereas the expression of anti-apoptotic BCL-2 was decreased in WECU-stimulated MDA-MB-231 cells. In addition, the expression of truncated BID (tBID) was increased with the decrease of the expression of total BID, a pro-apoptotic BCL-2 family protein, by WECU treatment.

WECU-induced apoptosis is associated with mitochondrial dysfunction in MDA-MB-231 cells

The change of MMP values according to WECU treatment was next investigated and the resulting data indicate that WECU significantly destroys the integrity of mitochondria measured by concentration-dependent loss of MMP (Fig. 4A and B). Moreover, the release of cytochrome c from the mitochondria to the cytoplasm increased clearly when treated with increasing

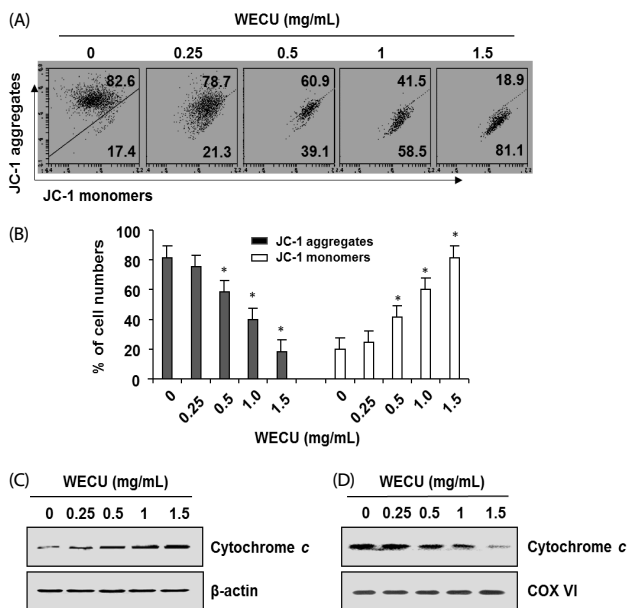


Fig. 4. Effects of WECU on the MMP values and cytochrome c expression in MDA-MB-231 cells. (A and B) After 72 h incubation with the indicated concentrations of WECU, the changes in MMP were analyzed on a flow cytometer. (A) An example of representative results according to each treatment concentration is presented, (B) The data were expressed as the means ± SD of three independent experiments (* $P < 0.05$ vs, untreated control). (C and D) Cells cultured under the same conditions were lysed, and cytosolic (C) and mitochondrial (D) proteins were probed with an anti-cytochrome c antibody. Equal protein loading was confirmed by analysis of actin and cytochrome oxidase subunit VI (COX VI) in each protein extract.

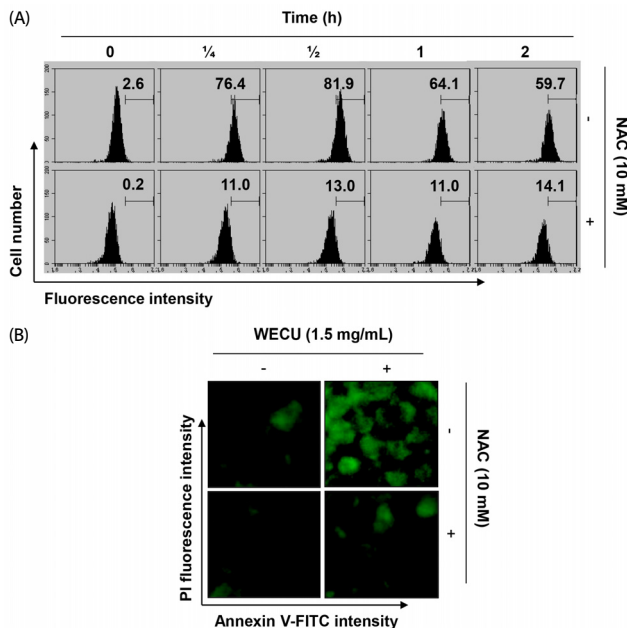


Fig. 5. Induction of ROS generation by WECU in MDA-MB-231 cells. (A) MDA-MB-231 cells were either treated with 1,5 mg/mL WECU for the indicated times or pre-treated with NAC (10 mM) for 1 h before WECU treatment, ROS generation was measured by a flow cytometer. The data are the means of the two different experiments. (B) The cells were either treated with 1,5 mg/mL WECU for 1 h or pre-treated with NAC (10 mM) for 1 h before WECU treatment and then stained with DCF-DA. Images were obtained using a fluorescence microscope (Original magnifications: 200×). The images presented here are captured from one experiment and are representative of at least three independent experiments.

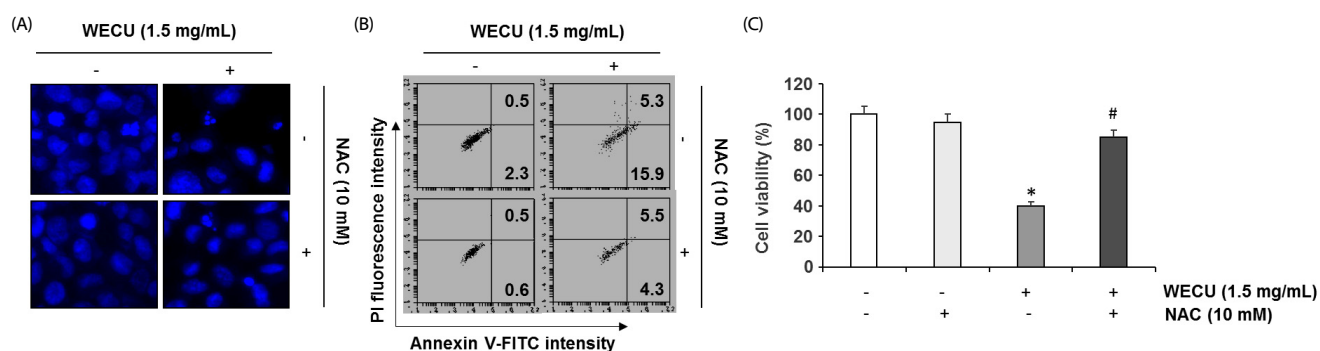


Fig. 6. Induction of ROS-dependent apoptosis by WECU in MDA-MB-231 cells. MDA-MB-231 cells were pre-treated with or without 10 mM NAC for 1 h, prior to 1.5 mg/mL WECU treatment. (A) After 72 h incubation, the cells were stained with DAPI, and then the nuclei were photographed (magnification, $\times 400$). (B) The percentages of annexin V-FITC positive cells cultured under the same conditions in the top (PI negative) and bottom (PI positive) right quadrant were indicated. Each point represents the mean of two independent experiments. (C) Cell viability was analyzed using MTT assay. The data are expressed as means \pm SD of three independent experiments (* $P < 0.05$ vs. untreated control; # $P < 0.05$ vs. WECU-treated cells).

concentrations of WECU (Fig. 4C). These results indicated that the loss of mitochondrial function plays an important role in the induction of apoptosis by WECU in MDA-MB-231 cells.

Induction of apoptosis by WECU is ROS-dependent in MDA-MB-231 cells

We further investigated whether induction of apoptosis by WECU is a ROS-dependent signal transduction pathway. As can be seen from the flow cytometry results, shown in Fig. 5A, in WECU treated cells, the production of ROS peaked within 30 min of WECU treatment, then gradually decreased over the treatment time. However, the WECU-induced increase of ROS content was greatly reduced by the addition of NAC, a ROS scavenger, and this phenomenon was confirmed additionally by fluorescence microscopic observation (Fig. 5B). Furthermore, when ROS production was artificially blocked, apoptosis induction and survival rate reduction by WECU were significantly attenuated (Fig. 6), indicating that induction of apoptosis by WECU was ROS dependent in MDA-MB-231 cells.

DISCUSSION

In this study, the mechanism of apoptosis induction by WECU, a water-soluble extract of *C. unshiu* peel, in MDA-MB-231 human breast cancer cells was investigated. The present results indicated that activation of the extrinsic and intrinsic apoptotic pathways may be involved in the induction of MDA-MB-231 cell apoptosis by WECU, which was ROS generation dependent.

Apoptosis, a programmed cell death, is a major death mechanism of the cytotoxic action of anti-cancer agents that removes target cells, such as malignant and/or cancer cells, without damaging normal cells or surrounding tissues. Apoptosis is generally divided into death receptor (DR)-initiated extrinsic and mitochondria-mediated intrinsic pathways [20,21]. The extrinsic pathway begins with the binding of the cell surface DRs of the death ligands for the activation of caspase-8 after mobilization of the adapter molecule leading to the activity of the downstream effector caspases such as caspase-7 and -3 [22,23]. Activation of effector caspases degrades various substrate proteins, including PARP, required for cell survival at the final stage of cell death, thus completing cell death [22]. Therefore, the increase in caspase-8 activity in MDA-MB-231

cells treated with WECU, as in the results of this study, implied that the extrinsic pathway was involved in the induction of apoptosis. The intrinsic pathway is initiated by the loss of internal mitochondrial membrane integrity and the activation of caspase-9 through the release of pro-apoptotic factors, such as cytochrome *c*, from the mitochondria into the cytoplasm. In addition, mitochondrial dysfunction is closely related to altered expression of BCL-2 family members and is mediated by a common pathway in which the activity of effector caspases is increased by activated caspase-9 [20,23]. In the present study, caspase-9 was activated in WECU-treated cells, and the loss of MMP and the migration of cytochrome *c* into the cytoplasm were increased, which correlated with decreased expression of BCL-2 and increased expression of BAX. The results also showed that the expression of tBID in WECU-treated cells was increased. Previous studies have shown that activation of caspase-8 by anti-cancer agents can convert BID to tBID [21,23]. tBID, together with BAX, oligomerizes in the outer membrane of mitochondria to destroy their integrity, causing the promotion of MMP loss and release of apoptogenic factors [20,23]. These results demonstrated that the induction of WECU-mediated apoptosis in MDA-MB-231 cells was simultaneously mediated by the intrinsic pathway and the exogenous pathway, and that the extrinsic pathway eventually amplified the intrinsic pathway through caspase-8-mediated truncation of BID.

ROS, cellular metabolites that regulate the various signaling transduction pathways of the cell, are an important regulator of cell fate [24,25]. Mitochondria are regarded as an important target of ROS damage, and an increase in ROS levels can lead to apoptosis by oxidizing mitochondrial pores [26,27]. Therefore, the production of ROS in MDA-MB-231 cells by WECU treatment using DCF-DA was measured, and the results confirmed that the production of ROS was greatly increased by WECU treatment. However, when the production of ROS was blocked by NAC, the apoptosis by WECU was markedly inhibited, and the inhibited cell survival rate was also significantly recovered. Although further studies on the mechanism of ROS production inhibition and mitochondrial transport system disturbance are needed, these results suggest that mitochondrial damage by ROS-dependent WECU in MDA-MB-231 cells was a major cause of apoptosis.

In summary, the present results demonstrated that WECU induced apoptosis in MDA-MB-231 cells through activation of

both intrinsic and extrinsic pathways by enhancing MMP loss and the cytosolic release of cytochrome *c* with increasing BAX/BCL-2 ratio. WECU also promoted ROS generation; however, when ROS production was blocked, WECU-induced apoptosis and reduction of cell viability were diminished, indicating ROS was a potential upstream molecule of the cytotoxic effect induced by WECU in MDA-MB-231 cells. Although the results of this study can provide a new perspective on the molecular mechanisms of the effects of *C. unshiu* peel extract on the growth of MDA-MB-231 breast cancer cells, the efficacy on other cancer cell lines and detection of bioactive active compounds of WECU should be additionally researched.

CONFLICT OF INTEREST

The authors declare no potential conflicts of interest.

ORCID

Min Yeong Kim: <http://orcid.org/0000-0001-9083-8218>
 Eun Ok Choi: <http://orcid.org/0000-0002-9141-4596>
 Hyun HwangBo: <http://orcid.org/0000-0003-2180-1205>
 Da He Kwon: <http://orcid.org/0000-0001-5492-7184>
 Kyu Im Ahn: <http://orcid.org/0000-0003-3827-4173>
 Hong Jae Kim: <http://orcid.org/0000-0003-2719-4004>
 Seon Yeong Ji: <http://orcid.org/0000-0001-8564-8663>
 Su-Hyun Hong: <http://orcid.org/0000-0001-9291-5803>
 Jin-Woo Jeong: <http://orcid.org/0000-0002-2263-7462>
 Gi Young Kim: <http://orcid.org/0000-0002-6878-0790>
 Cheol Park: <http://orcid.org/0000-0003-4906-0410>
 Yung Hyun Choi: <http://orcid.org/0000-0002-1454-3124>

REFERENCES

- Siegel RL, Miller KD, Jemal A. Cancer statistics, 2016. *CA Cancer J Clin* 2016;66:7-30.
- Niraula S, Ocana A. Mechanism of drug resistance in relation to site of metastasis: meta-analyses of randomized controlled trials in advanced breast cancer according to anticancer strategy. *Cancer Treat Rev* 2016;50:168-74.
- Li C, Yang L, Zhang D, Jiang W. Systematic review and meta-analysis suggest that dietary cholesterol intake increases risk of breast cancer. *Nutr Res* 2016;36:627-35.
- Safarzadeh E, Sandoghchian Shotorbani S, Baradaran B. Herbal medicine as inducers of apoptosis in cancer treatment. *Adv Pharm Bull* 2014;4:421-7.
- Gali-Muhtasib H, Hmadi R, Kareh M, Tohme R, Darwiche N. Cell death mechanisms of plant-derived anticancer drugs: beyond apoptosis. *Apoptosis* 2015;20:1531-62.
- Bonfiglio D, Giordano C, De Amicis F, Lanzino M, Andò S. Natural products as promising antitumoral agents in breast cancer: mechanisms of action and molecular targets. *Mini Rev Med Chem* 2016;16:596-604.
- Wang CY, Bai XY, Wang CH. Traditional Chinese medicine: a treasured natural resource of anticancer drug research and development. *Am J Chin Med* 2014;42:543-59.
- Ming-Hua C, Bao-Hua Z, Lei Y. Mechanisms of anorexia cancer cachexia syndrome and potential benefits of traditional medicine and natural herbs. *Curr Pharm Biotechnol* 2016;17:1147-52.
- Min KY, Kim HJ, Lee KA, Kim KT, Paik HD. Antimicrobial activity of acid-hydrolyzed *Citrus unshiu* peel extract in milk. *J Dairy Sci* 2014;97:1955-60.
- Park HJ, Jung UJ, Cho SJ, Jung HK, Shim S, Choi MS. *Citrus unshiu* peel extract ameliorates hyperglycemia and hepatic steatosis by altering inflammation and hepatic glucose- and lipid-regulating enzymes in db/db mice. *J Nutr Biochem* 2013;24:419-27.
- Oh YC, Cho WK, Jeong YH, Im GY, Yang MC, Hwang YH, Ma JY. Anti-inflammatory effect of *Citrus unshiu* peel in LPS-stimulated RAW 264.7 macrophage cells. *Am J Chin Med* 2012;40:611-29.
- Suzuki M, Sasaki K, Yoshizaki F, Oguchi K, Fujisawa M, Cyong JC. Anti-hepatitis C virus effect of *Citrus unshiu* peel and its active ingredient nobiletin. *Am J Chin Med* 2005;33:87-94.
- Lee S, Ra J, Song JY, Gwak C, Kwon HJ, Yim SV, Hong SP, Kim J, Lee KH, Cho JJ, Park YS, Park CS, Ahn HJ. Extracts from *Citrus unshiu* promote immune-mediated inhibition of tumor growth in a murine renal cell carcinoma model. *J Ethnopharmacol* 2011;133:973-9.
- Kim A, Im M, Gu MJ, Ma JY. *Citrus unshiu* peel extract alleviates cancer-induced weight loss in mice bearing CT-26 adenocarcinoma. *Sci Rep* 2016;6:24214.
- Jin H, Lee WS, Yun JW, Jung JH, Yi SM, Kim HJ, Choi YH, Kim G, Jung JM, Ryu CH, Shin SC, Hong SC. Flavonoids from *Citrus unshiu* Marc. inhibit cancer cell adhesion to endothelial cells by selective inhibition of VCAM-1. *Oncol Rep* 2013;30:2336-42.
- Park HR, Park SB, Hong HD, Suh HJ, Shin KS. Structural elucidation of anti-metastatic rhamnogalacturonan II from the pectinase digest of citrus peels (*Citrus unshiu*). *Int J Biol Macromol* 2017;94:161-9.
- Lee PY, Park BC, Chi SW, Bae KH, Kim S, Cho S, Kang S, Kim JH, Park SG. Histone H4 is cleaved by granzyme A during staurosporine-induced cell death in B-lymphoid Raji cells. *BMB Rep* 2016;49:560-5.
- You MK, Kim HJ, Rhyu J, Kim HA. Pear pomace ethanol extract improves insulin resistance through enhancement of insulin signaling pathway without lipid accumulation. *Nutr Res Pract* 2017; 11:198-205.
- Kim HB, Yoo BS. Propolis inhibits UVA-induced apoptosis of human keratinocyte HaCaT cells by scavenging ROS. *Toxicol Res* 2016; 32:345-51.
- Fulda S, Debatin KM. Extrinsic versus intrinsic apoptosis pathways in anticancer chemotherapy. *Oncogene* 2006;25:4798-811.
- Nakajima YI, Kuranaga E. Caspase-dependent non-apoptotic processes in development. *Cell Death Differ* 2017;24:1422-30.
- Decker P, Muller S. Modulating poly (ADP-ribose) polymerase activity: potential for the prevention and therapy of pathogenic situations involving DNA damage and oxidative stress. *Curr Pharm Biotechnol* 2002;3:275-83.
- Hata AN, Engelman JA, Faber AC. The BCL2 family: Key mediators of the apoptotic response to targeted anticancer therapeutics. *Cancer Discov* 2015;5:475-87.
- Kaminsky VO, Zhivotovsky B. Free radicals in cross talk between autophagy and apoptosis. *Antioxid Redox Signal* 2014;21:86-102.
- Yang Y, Karakhanova S, Hartwig W, D'Haese JG, Philippov PP, Werner J, Bazhin AV. Mitochondria and mitochondrial ROS in cancer: novel targets for anticancer therapy. *J Cell Physiol* 2016;231:2570-81.
- Kim J, Kim J, Bae JS. ROS homeostasis and metabolism: a critical liaison for cancer therapy. *Exp Mol Med* 2016;48:e269.
- Kim B, Song YS. Mitochondrial dynamics altered by oxidative stress in cancer. *Free Radic Res* 2016;50:1065-70.