

# Correlation between the Inclinations of the Incisors and Lips in Mixed Dentition

Sungdong Oh, Jewoo Lee, Jinyoung Kim, Jiyoung Ra

*Department of Pediatric Dentistry, College of Dentistry, Wonkwang University*

## Abstract

This study aimed to investigate the correlation between the inclinations of the incisors and lips in mixed dentition aged 7 - 11 years. Lateral cephalometric radiographs of 353 children were analyzed to measure the upper incisor inclination, lower incisor inclination, lower-nasolabial angle, and mentolabial angle in relation to the skeletal malocclusion classification. The measurements were then assessed using the Kruskal-Wallis test, Pearson correlation, and multiple regression analysis.

There were significant negative correlations between the inclination of the upper incisors and lower-nasolabial angle in all classes of skeletal malocclusion. There was a negative correlation between the inclination of the lower incisors and mentolabial angle; however, class II malocclusion had a significant positive correlation.

This study identified the factors that affect lip inclination and verified their associations.

**Key words :** Inclination of the incisors, Lower-nasolabial angle, Mentolabial angle

## I. Introduction

The ultimate goal of orthodontic treatment is to achieve and maintain optimal function and aesthetic appearance[1]. It is crucial to take into account both the functional and aesthetic improvement when making an orthodontic diagnosis or establishing a treatment plan. When observing the soft tissues in profile, the appearance of the face is the most important aspect to evaluate[2].

Many reports have already acknowledged the importance of the soft tissues in orthodontic treatment[3-7] and attempted to apply these principles to clinical practice. Tweed[3] considered that the mouth plays an important role in portraying the beauty and character of the face. According to Tweed[3], the

shape and esthetics of the lips are affected by the occlusal relationships of the teeth and are closely related to the changes in the inclination of the mandibular incisors relative to the basal bone.

The Tweed triangle is used in clinical practice based on this principle. Ricketts[4], Merrifield[5], and Peck and Peck[6] have studied aesthetic aspects of the facial soft tissues, while Holdaway[7] used soft tissue analysis to demonstrate the irrationality of utilizing only hard tissue analysis when establishing an orthodontic treatment plan.

With regard to the relationship between the retrusion of the maxillary and mandibular incisors and the upper and lower lips, a large number of studies have been conducted to establish a ratio between posterior movement of the lips and

---

*Corresponding author : Jiyoung Ra*

*Department of Pediatric Dentistry, College of Dentistry, Wonkwang University, 895 Muwang-ro, Iksan, Jeollabuk-do, 54538, Korea*

*Tel: +82-63-850-6633 / Fax: +82-63-858-2957 / E-mail: pedojoy@wku.ac.kr*

*Received April 17, 2017 / Revised August 14, 2017 / Accepted July 26, 2017*

the incisal edge of the anterior teeth[8-12]. Jacobs *et al.*[12] reported a ratio of 0.7 : 1 for the movement of the upper lip and retraction of the maxillary incisors and a ratio of 1 : 1 for the movement of the lower lip and retraction of the mandibular incisors. The latter is known to be less predictable than the former. Caplan and Shicapuja[13] reported ratios of 1.75 : 1 and 1.2 : 1 for the retraction of the upper and lower lips, respectively, depending upon the retraction of the upper and lower incisors in African Americans. In a study on Japanese participants, Yasutomi *et al.*[14] reported these ratios to be 1.85 : 1 and 1.32 : 1.

The soft tissue profile is determined by multiple factors, including growth of the facial skeleton, growth of the nose, and the inclination of the teeth. Pediatric dentistry, in particular, requires awareness of changes in the growth of soft and hard tissues, because children are continually growing and their facial appearance is constantly changing. Nanda *et al.*[15] examined changes in the facial appearance of children aged 7 - 18 years and presented patterns of change in soft tissues by age and sex.

Furthermore, previous findings on changes in the facial soft tissue profile with age or its relationship with inclination of the incisors following orthodontic treatment have been reported. However, only a few studies have addressed the relationship between the soft and hard tissues in developing children who have not undergone orthodontic treatment; there are especially very few studies on Korean children.

Therefore, this study aimed to investigate the correlations between the anterior and posterior inclination of the maxillary and mandibular teeth, which are part of the facial hard tissues, and the lower-nasolabial angle (L-nasolabial angle) and mentolabial angles, which are part of the facial soft tissues. To this end, measurements from cephalometric radiographs was analyzed, checked for statistical significance, and assessed whether the results would be useful for orthodontic diagnosis.

## II. Materials and methods

### 1. Study participants

Subjects consisted of 375 children (181 boys and 194 girls), aged 7 - 11 years, who had undergone cephalometric radiography at Wonkwang University Dental Hospital between January 1, 2003 and December 31, 2015. The 22 patients for meeting the exclusion criteria, which included a history of

**Table 1.** Distribution of skeletal malocclusion and gender

	Class I malocclusion	Class II malocclusion	Class III malocclusion
Boys (N=173)	80	58	35
Girls (N=180)	99	58	23

orthodontic treatment or current orthodontic treatment, or having a craniofacial deformity such cleft lip and palate were excluded. All participants were classified into skeletal class I, II, or III malocclusion (Table 1).

### 2. Methods

#### 1) Cephalometric radiograph analysis

The following landmarks and measurements were used in this study:

##### (1) Landmarks

###### ① Hard tissue landmarks (Fig. 1)

Nasion (N) : Most anterior point in frontonasal suture

Subspinale (A) : The greatest concavity of the maxilla between anterior nasal spine and the maxillary dental alveolus

Supramentale (B) : The greatest concavity of the mandible between infradentale and pogonion

Porion (Po) : Most superior point of outline of external auditory meatus

Orbitale (Or) : Most inferior point on margin of orbit

Gonion (Go) : Most posterior inferior point on angle of mandible

Gnathion (Gn) : The most anterior-inferior point on the mandibular symphysis

Root apex of upper incisor (Ur)

Incisor superius (Is)

Incisor inferius (Ii)

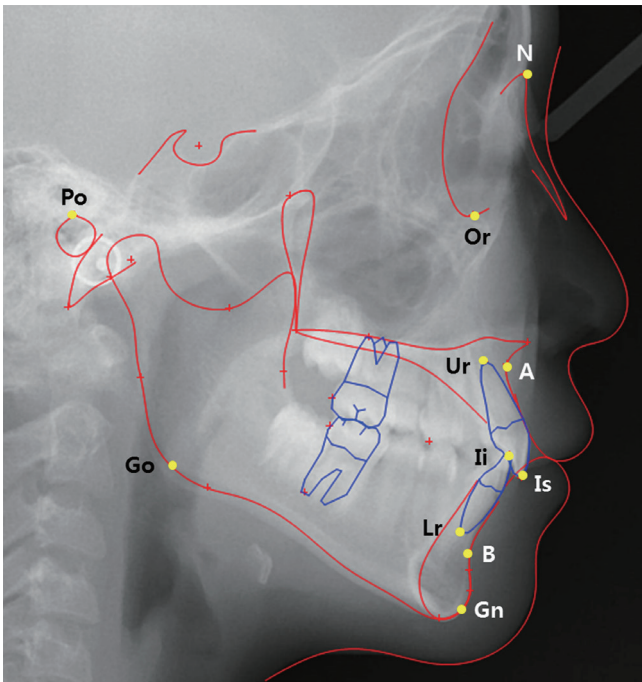
Root apex of lower incisor (Lr)

###### ② Soft tissue landmarks (Fig. 2)

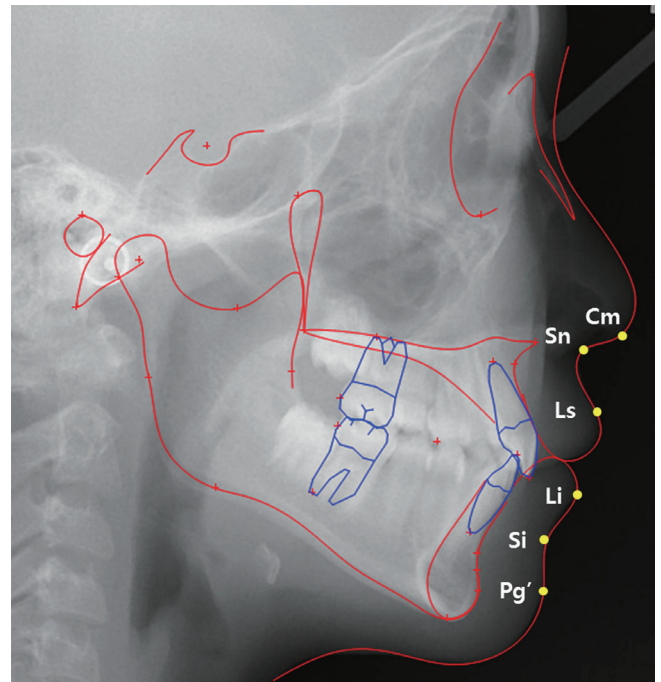
Columella point (Cm) : The most anterior point on the columella of the nose

Subnasale (Sn) : The point of convergence of the nose and the upper lip

Labrale superius (Ls) : The most anterior point on the con-



**Fig. 1.** Hard tissue landmarks. N: Nasion, A: Subspinale, B: Supramentale, Po: Porion, Go: Gonion, Or: Orbitale, Gn: Gnathion, Ur: Root apex of upper incisor, Is: Incisor superius, Ii: Incisor inferius, Lr: Root apex of lower incisor.



**Fig. 2.** Soft tissue landmarks. Cm: Columella point, Sn: Subnasale, Ls: Labrale superius, Li: Labrale inferius, Si: Sulcus inferius, Pg': Soft tissue pogonion.

vexity of upper lip

Labrale inferius (Li) : The most anterior point on the convexity of the lower lip

Sulcus inferius (Si) : The point of greatest concavity in the midline between the lower lip and soft-tissue chin

Soft tissue pogonion (Pg') : The most anterior point of the soft-tissue chin

(2) Measurements (Fig. 3)

Frankfort horizontal plane (FH) : Orbitale-porion horizontal line

Upper incisor angle : Angle of Ur-Is line (U1) to FH, angle of U1 to NA line

Lower incisor angle : incisor-mandibular plane angle (IMPA), angle of Ii-Lr (L1) to NB line

Lower-nasolabial angle (L-nasolabial angle) : Angle of FH plane to Sn-Ls line

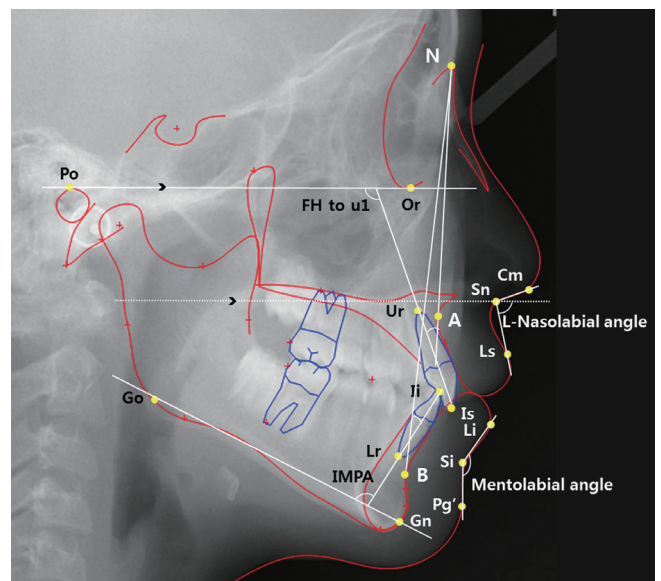
Mentolabial angle : The angle between Li and Si and Pg'

Upper lip thickness (ULT) : Length of A point to Sn

Upper lip length (ULL) : Length of Ls to Sn

Lower lip thickness (LLT) : Length of B point to Si

Lower lip length (LLL) : Length of Li to Si



**Fig. 3.** Angular measurements. FH: Frankfort horizontal plane, N: Nasion, A: Subspinale, B: Supramentale, Po: Porion, Go: Gonion, Or: Orbitale, Gn: Gnathion, Ur: Root apex of upper incisor, Is: Incisor superius, Ii: Incisor inferius, Lr: Root apex of lower incisor, Cm: Columella point, Sn: Subnasale, Ls: Labrale superius, Li: Labrale inferius, Si: Sulcus inferius, Pg': Soft tissue pogonion, L-nasolabial angle: Lower-nasolabial angle.

The inclination of the maxillary incisors was calculated by measuring the angles of the long axis of the maxillary central incisor with the FH plane and with the NA line. The inclination of the mandibular incisors was calculated by measuring the angles of the long axis of the mandibular central incisor with the Go-Gn line and with the NB line. For the assessment of the inclination of the upper lip, the lower-nasolabial angle was measured with reference to the FH plane to eliminate any individual differences in nasal growth and inclination. Mentolabial angle was assessed by measuring the angles between Li, Si, and Pg'.

Since previous studies have shown that lip length and thickness can affect the inclination of the lips, the length and thickness of the upper and lower lips were measured. The thickness of the upper lip was measured as the length of the line connecting A Point and Sn, while the length of the upper lip was measured as the length of the line connecting Ls and Sn. The thickness of the lower lip was measured as the length of the line connecting B Point and Si, while the length of the lower lip was measured as the length of the line connecting Li and Si.

2) Statistical analysis

A single investigator used the Vceph™ 6.0 (Osstem Implant, Korea) to identify and measure landmarks on the cephalometric radiographs and to evaluate and record the results. Statistical analyses were conducted using Windows SPSS 18 (IBM,

USA) with a significance level set at 5%. The Kruskal-Wallis test and Mann-Whitney test were performed, depending upon the classification of skeletal malocclusion. A Pearson correlation test was performed to investigate the correlations between the inclination of the incisors and the lower-nasolabial and mentolabial angles. Partial correlation analysis was performed to eliminate the effects of lip thickness and length, and a multiple regression analysis was performed to verify the correlation with various factors.

III. Results

1. Comparison of the measurements depending upon the classification of skeletal malocclusion

Table 2 shows the means of all measurements in relation to the classification of skeletal malocclusion. FH to U1, which represents the inclination of the upper incisor, significantly differed between class II and III malocclusion groups, while U1 to NA significantly differed across all groups. IMPA and L1 to NB, which represent inclination of the lower incisor, significantly differed across all groups. L-nasolabial angle significantly differed between the class II and III malocclusion groups, while mentolabial angle significantly differed between class I and II malocclusion groups and between class II and class III malocclusion groups.

**Table 2.** The means and standard deviation of cephalometric measurement

Variable	Class I malocclusion		Class II malocclusion		Class III malocclusion	
	Mean	SD	Mean	SD	Mean	SD
FH to U1	114.46 <sup>ab</sup>	0.50	112.72 <sup>a</sup>	0.77	115.69 <sup>b</sup>	1.00
U1 to NA	25.34	0.44	22.70	0.78	28.12	0.85
IMPA	90.40	0.50	93.33	0.61	85.52	1.13
L1 to NB	26.06	0.40	28.00	0.62	20.36	0.86
Lower-nasolabial angle	69.07 <sup>ab</sup>	0.54	70.41 <sup>a</sup>	0.70	67.38 <sup>b</sup>	1.17
Mentolabial angle	142.72 <sup>a</sup>	0.73	136.82	1.36	144.58 <sup>a</sup>	1.15
ULT	11.83 <sup>a</sup>	0.12	11.52 <sup>a</sup>	0.15	12.30	0.19
ULL	12.29 <sup>abc</sup>	0.13	12.52 <sup>abc</sup>	0.19	12.02 <sup>abc</sup>	0.20
LLT	12.80	0.20	13.27	0.26	12.06	0.26
LLL	12.11	0.15	12.60	0.17	11.47	0.22

Kruskal-Wallis test, Mann-Whitney post hoc

a, b, and c mean that there is no significant difference between the groups.

SD = standard deviation, FH = Frankfort horizontal plane, U1 = Root apex of upper incisor-Incisor superius line, IMPA = Incisor-mandibular plane angle, L1 = Root apex of lower incisor-Incisor inferius line, NA = Nasion-subspinale line, NB = Nasion-supramentale line, ULT = Upper lip thickness, ULL = Upper lip length, LLT = Lower lip thickness, LLL = Lower lip length

## 2. Correlation between the inclinations of the incisors and lips in relation to the classification of skeletal malocclusion

FH to U1 had a significant negative correlation with L-nasolabial angle ( $r = -0.333, p < 0.001$ ) in the skeletal class I malocclusion group, and U1 to NA had a significant negative correlation with L-nasolabial angle ( $r = -0.179, p < 0.05$ ), suggesting that L-nasolabial angle is more strongly associated with FH to U1 than with U1 to N1. IMPA and L1 to NB were negatively ( $p < 0.01$ ) and positively correlated with mentolabial angle, respectively. However, the latter correlation was not statistically significant, showing that the IMPA is more strongly correlated with the mentolabial angle than L1 to NB (Table 3).

FH to U1 had a significant negative correlation with L-nasolabial angle ( $r = -0.261, p < 0.01$ ) in the skeletal class II malocclusion group, and U1 to NA also had a significant negative correlation with L-nasolabial angle ( $r = -0.189, p < 0.05$ ), suggesting that L-nasolabial angle is more strongly associated with FH to U1 than with U1 to N1. IMPA and L1 to NB were negatively correlated with the mentolabial angle; however, only the latter correlation was statistically significant ( $r = 0.489, p < 0.001$ ), indicating that L1 to NB has a stronger correlation with the mentolabial angle than IMPA does (Table 3).

FH to U1 had a significant negative correlation with the L-nasolabial angle ( $r = -0.483, p < 0.001$ ) in the skeletal class III malocclusion group, and U1 to NA also had a significant negative correlation with the L-nasolabial angle ( $r = -0.308, p < 0.05$ ), suggesting that L-nasolabial angle is more strongly associated with FH to U1 than with U1 to N1. IMPA and L1 to NB were negatively correlated with the mentolabial angle; however, the correlation was not statistically significant (Table 3).

Partial correlation analysis considering the thickness and length of the lips revealed a higher correlation coefficient with the inclinations of the upper incisors and lips than the inclinations of the lower incisors and lips, regardless of the classification of skeletal malocclusion. This suggested that the thickness and length of the lips have a greater impact on the inclination of the upper lips (Table 4).

## 3. Regression analysis for the correlation between the inclinations of the incisors and lips

Regression analysis revealed that FH to U1 has a significantly greater association with L-nasolabial angle than U1 to NA. Moreover, ULT had a significantly greater impact on L-nasolabial angle than U1 to NA in the skeletal class I malocclusion

**Table 3.** Correlation between the inclinations of the incisors and lips

		Lower-nasolabial angle		Mentolabial angle	
		Correlation	$p$ value	Correlation	$p$ value
Class I malocclusion	FH to U1	-0.333***	0.000	.	.
	U1 to NA	-0.179*	0.017	.	.
	IMPA	.	.	-0.232**	0.002
	L1 to NB	.	.	0.074	0.324
Class II malocclusion	FH to U1	-0.261**	0.005	.	.
	U1 to NA	-0.189*	0.042	.	.
	IMPA	.	.	0.093	0.319
	L1 to NB	.	.	0.489***	0.000
Class III malocclusion	FH to U1	-0.483***	0.000	.	.
	U1 to NA	-0.308*	0.019	.	.
	IMPA	.	.	-0.235	0.075
	L1 to NB	.	.	-0.003	0.985

Pearson's correlation test (\* :  $p < 0.05$ , \*\* :  $p < 0.01$ , \*\*\* :  $p < 0.001$ )

FH = Frankfort horizontal plane, U1 = Root apex of upper incisor-Incisor superior line, N1 = Root apex of lower incisor-Incisor inferior line NA = Nasion-Subspinale line, NB = Nasion-Supramentale line, IMPA = Incisor-mandibular plane angle

**Table 4.** Partial correlation between the inclinations of the incisors and lips

		Lower-nasolabial angle		Mentolabial angle	
		Correlation	<i>p</i> value	Correlation	<i>p</i> value
Class I malocclusion	FH to U1	-0.418***	0.000	.	.
	U1 to NA	0.249**	0.001	.	.
	IMPA	.	.	-0.221	0.003
	L1 to NB	.	.	0.013	0.866
Class II malocclusion	FH to U1	-0.359***	0.000	.	.
	U1 to NA	-0.286**	0.002	.	.
	IMPA	.	.	0.055	0.563
	L1 to NB	.	.	0.418***	0.000
Class III malocclusion	FH to U1	-0.561***	0.000	.	.
	U1 to NA	-0.389**	0.003	.	.
	IMPA	.	.	-0.223	0.099
	L1 to NB	.	.	-0.020	0.884

Partial correlation test (\*\* : *p* < 0.01, \*\*\* : *p* < 0.001)

Control variable : Upper lip thickness, Upper lip length, Lower lip thickness, Lower lip length

FH = Frankfort horizontal plane, U1 = Root apex of upper incisor-Incisor superius line, N1 = Root apex of lower incisor-Incisor inferius line NA = Nasion-Subspinale line, NB = Nasion-Supramentale line, IMPA = Incisor-mandibular plane angle

**Table 5.** Multiple regression analysis of the inclination of the lips with independent variables in Class I malocclusion

Dependent variable		Independent variable	B	$\beta$	t	<i>p</i>	VIF
Class I malocclusion	Lower-nasolabial angle	(constant)	140.861				
		FH to U1	-0.996	-0.912	-6.534***	0.000	4.967
		U1 to NA	0.705	0.570	4.078***	0.000	4.986
		ULT	1.663	0.372	5.803***	0.000	1.046
	Mentolabial angle	ULL	0.382	0.094	1.482	0.140	1.017
		(constant)	202.692				
		IMPA	-1.005	-0.695	-5.755***	0.000	3.188
		N1 to NB	1.070	0.591	4.797***	0.000	3.320
		LLT	-0.028	-0.008	-0.089	0.929	1.587
		LLL	0.281	0.060	0.812	0.418	1.186

Multiple regression analysis (\*\*\* : *p* < 0.001)

FH = Frankfort horizontal plane, U1 = Root apex of upper incisor-Incisor superius line, N1 = Root apex of lower incisor-Incisor inferius line NA = Nasion-Subspinale line, NB = Nasion-Supramentale line, ULT = Upper lip thickness, ULL = Upper lip length, LLT = Lower lip thickness, LLL = Lower lip length, IMPA = Incisor-mandibular plane angle

group. IMPA was more strongly associated with mentolabial angle than N1 to NB was, while LLT and LLL had no significant correlations (Table 5). The explanatory powers of the multiple regression model for L-nasolabial angle and mentolabial angle were 30.2% and 18.6%, respectively, in the class I malocclusion group.

In the skeletal class II malocclusion group, FH to U1 had

the strongest association with L-nasolabial angle, followed by ULT, ULL, and U1 to NA. Unlike in the class I malocclusion group, N1 to NB had a greater impact on the mentolabial angle than IMPA did (Table 6). The explanatory powers of the multiple regression model for L-nasolabial angle and mentolabial angle were 21.9% and 37.6%, respectively, in the class II malocclusion group.



In the skeletal class III malocclusion group, FH to U1 had the greatest impact on L-nasolabial angle, and the remaining variables had similar levels of impact. Results pertaining to mentolabial angle were similar to those in the class I malocclusion group (Table 7). The explanatory powers of the multiple regression model for L-nasolabial angle and mentolabial angle were 44.3% and 15.6%, respectively, in the class III malocclusion group.

Multiple regression results in relation to skeletal classifica-

tion were similar across all three groups; however, ULL had no significant impact on the L-nasolabial angle in class I malocclusion while it had significant impact on L-nasolabial angle in class II and class III malocclusion. Further, N1 to NB was a stronger predictor of mentolabial angle than IMPA was in class II malocclusion. The multiple regression model for class III malocclusion had the strongest explanatory power for L-nasolabial angle while that for class II malocclusion had the strongest explanatory power for mentolabial angle.

**Table 6.** Multiple regression analysis of the inclination of the lips with independent variables in Class II malocclusion

	Dependent variable	Independent variable	B	$\beta$	t	$p$	VIF
Class II malocclusion	Lower-nasolabial angle	(constant)	143.326				
		FH to U1	-0.998	-1.107	-3.539**	0.001	14.392
		U1 to NA	0.705	0.788	2.495*	0.014	14.677
		ULT	1.124	0.244	2.774**	0.007	1.143
		ULL	0.844	0.230	2.725**	0.007	1.047
	Mentolabial angle	(constant)	211.031				
		IMPA	-1.236	0.259	-4.767***	0.000	2.447
		N1 to NB	2.059	0.290	7.106***	0.000	3.212
		LLT	-0.314	0.575	-0.547	0.585	1.667
		LLL	-0.983	0.646	-1.522	0.131	1.227

Multiple regression analysis (\* :  $p < 0.05$ , \*\* :  $p < 0.01$ , \*\*\* :  $p < 0.001$ )

FH = Frankfort horizontal plane, U1 = Root apex of upper incisor-Incisor superius line, N1 = Root apex of lower incisor-Incisor inferius line NA = Nasion-Subspinale line, NB = Nasion-Supramentale line, ULT = Upper lip thickness, ULL = Upper lip length, LLT = Lower lip thickness, LLL = Lower lip length, IMPA = Incisor-mandibular plane angle

**Table 7.** Multiple regression analysis of the inclination of the lips with independent variables in Class III malocclusion

	Dependent variable	Independent variable	B	$\beta$	t	$p$	VIF
Class III malocclusion	Lower-nasolabial angle	(constant)	157.959				
		FH to U1	-1.371	-1.162	-4.693***	0.000	6.272
		U1 to NA	0.936	0.676	2.759**	0.008	6.135
		ULT	1.787	0.283	2.758**	0.008	1.077
		ULL	1.64	0.276	2.724**	0.009	1.047
	Mentolabial angle	(constant)	199.007				
		IMPA	-0.886	-0.868	-3.375**	0.001	4.461
		N1 to NB	1.008	0.756	2.866**	0.006	4.693
		LLT	0.254	0.057	0.400	0.691	1.354
		LLL	-0.196	-0.038	-0.265	0.792	1.361

Multiple regression analysis (\*\* :  $p < 0.01$ , \*\*\* :  $p < 0.001$ )

FH = Frankfort horizontal plane, U1 = Root apex of upper incisor-Incisor superius line, N1 = Root apex of lower incisor-Incisor inferius line NA = Nasion-Subspinale line, NB = Nasion-Supramentale line, ULT = Upper lip thickness, ULL = Upper lip length, LLT = Lower lip thickness, LLL = Lower lip length, IMPA = Incisor-mandibular plane angle

#### IV. Discussion

Because children and adolescents exhibit continuous growth and development, choosing the appropriate time for orthodontic treatment, although very important, is difficult.

Since the introduction of cephalometric radiography to the field of dentistry, it has become possible to evaluate patterns of facial growth and changes in growth with age. This is useful for predicting growth in orthodontics[16,17].

It has been known for a long time that changes in the hard tissue related to growth or orthodontic treatment are associated with soft tissue changes. As the hard tissue is necessarily covered by the distinct anatomical structure of the soft tissue, consisting of skin and muscles, the specific location of the hard tissue itself is not fully visible externally. Thus, in addition to analyzing the relatively static hard tissue, it is important to closely analyze the individual's soft tissue before initiating the treatment, since this provides the face with its unique character[18]. In particular, changes in the inclination of the incisors affect the protrusion of the profile, and since this is a crucial aspect of orthodontic diagnosis and aesthetic considerations, it is essential to understand the relationship between these two properties. Riedel[19] analyzed cephalometric radiographs in order to study the response of the soft tissue to orthodontic treatment and found that the soft tissue profile was affected by the maxillary and mandibular basal bones, skeletal protrusion, and the relationship of the basal bones with the maxillary and mandibular incisors; additionally, the profiles of the soft and hard tissues are also closely related. However, Burstone[20] reported that these are not always closely connected because of individual differences in the thickness of the soft tissue covering the bones. Likewise, Subtelny *et al.*[18] reported that not all parts of the soft tissue show consistent changes in response to the growth of the hard tissue that forms its base. In addition, longitudinal studies on soft tissue growth have explained the soft tissue profile in terms of the supporting skeletal structures; they have also shown differences in soft tissue growth between boys and girls. Therefore, for orthodontic diagnosis, it is important to verify the extent of the association between the hard and soft tissues.

Numerous studies have been conducted, with diverse results, for analyzing the soft tissue profile in relation to orthodontic tooth movement because this aspect is critical for establishing orthodontic treatment plans and achieving satisfaction in treatment outcomes. However, according to Rudee *et al.*[8],

orthodontic treatment produces a change in the lip area and an overall improvement in the profile. Therefore, such an outcome should not be taken for granted without first evaluating normal growth-related changes in each part of the soft tissue profile. In this regard, Nanda *et al.*[15] investigated soft tissue changes by age and sex in male and female participants aged 7 - 18 years with normal class I occlusion. They observed that the nasolabial angle showed a slight increase, but the variation by age was large. In contrast, none of the participants did not show significant age-related changes in the mentolabial angle, despite considerable diversity in the size differences between ages. These results may be due to the fact that the nasolabial angle is affected by the protrusion of the alveolar process, the thickness of the lips, and especially the nose, which results in a large variance. Conversely, the mentolabial angle is affected by both the maxillary and the mandibular incisors, and the uncertainty in the landmark could be responsible for the above-mentioned result[8,21,22]. In addition, Andersen *et al.*[21] reported that the nasolabial angle is larger in female than in male children due to differences in nose growth. However, Lo and Hunter[23] reported that the nasolabial angle hardly changed regardless of growth, that changes in the nasolabial angle were unrelated to bodily movement of the maxillary incisors, and that the nasolabial angle increased due to the inclinational movement. Chung *et al.*[24] reported that male children have a longer nose and overall profile than their female counterparts, while their soft tissue profile has slightly less curvature. With age, both male and female children show greater protrusion and linearity in the lower face, but slightly more curvature in the overall soft tissue profile.

Several studies have also evaluated the association between the soft tissue of the lips and the inclination of the maxillary and mandibular incisors. Wylie *et al.*[25] reported that the uprighting of the mandibular incisors has little effect on the protrusion of the lower lip, while there is a moderate correlation between uprighting of the maxillary incisors and protrusion of the upper lip. Bloom *et al.*[10] investigated the correlation between changes in the incisor inclination and the lip inclination before and after orthodontic treatment and found that changes in the inclination of the maxillary incisors affected both the upper and lower lips, while changes in the inclination of the mandibular incisors mainly affected the lower lip. Ramos *et al.*[26] discovered a significant correlation between posterior movement of the maxillary incisors and changes in the inclination of the upper lip. Rudee *et al.*[8] also studied



changes in the lips in relation to posterior movement of the incisors due to orthodontic treatment. They identified a strong correlation between changes in the inclination of the maxillary incisors and in the upper lip, a moderate correlation between the inclination of the maxillary incisors and the lower lip, and a strong correlation between the inclination of the mandibular incisors and the lower lip. In contrast, Waldman *et al.*[27] reported that there was no significant correlation between the actual tooth movement and changes in the soft tissue in the horizontal plane. The findings of this study partially support previous reports. With the exception of skeletal class II malocclusion, the inclinations of the upper and lower incisors had a significant negative correlation with the inclinations of the upper and lower lips, respectively. The inclinations of the lower incisors and lips were positively correlated only in skeletal class II malocclusion.

Initially, in order to predict the response of soft tissues to changes in hard tissues, investigators used the ratio between movements of the soft tissue and corresponding movements of the hard tissue[8,9]. However, Bloom[10] claimed that, since there was a strong correlation between treatment of the hard tissue and changes in the soft tissue, it should be possible to use methods such as regression analysis or scatter plots. Denis and Speidel[28] compared the standard error when using ratios, simple regression analysis, or multiple regression analysis as methods to predict the soft tissue profile in adult patients and reported that ratios were the least accurate, while multiple regression analysis was the most accurate. In this study, multiple regression analysis was used, but in the future, it will be necessary to analyze various other measurements and perform a multiple regression analysis that includes more contributing factors.

This study used the lower-nasolabial angle instead of the nasolabial angle. There have been various reports suggesting that the nose has a major influence on the measurement of the nasolabial angle. For example, Sheideman *et al.*[29] reported that the nasolabial angle decreases slightly with age due to the downward growth of the nose, and Fitzgerald *et al.*[30] consistently emphasized the effect of nasal development in the analysis of the nasolabial angle. Therefore, in order to minimize the influence of nasal growth, the lower-nasolabial angle was used, which is measured relative to the FH plane, for comparison with the inclination of the maxillary incisors.

This study has clear limitations as it was a cross-sectional study, and subjects were selected at random, rather than only

those with perfect occlusion. Meanwhile, using the FH plane as a reference for maxillary measurements eliminated some possibility of variance due to individual differences. As can be observed in the results, performing a partial correlation analysis that accounted for lip thickness and length yielded a more significant result than the Pearson correlation analysis for the inclinations of the incisors and lips. This shows that the inclination of the lips are affected by various factors, suggesting that an even stronger association between the variables could be obtained by performing a multiple regression analysis that includes factors other than the incisor inclination and the thickness and length of the lips. Other variables that could be added to the regression model include the functional pressure of the soft tissue, patterns of growth, changes in the nose, and growth of the maxilla and mandible.

## V. Conclusion

This study aimed to investigate the correlation between the inclinations of the incisors and lips in mixed dentition. The findings verify that the inclination of the incisors has an impact on the inclination of the lips irrespective of skeletal malocclusion. Moreover, the impact of incisor inclination is lesser on the lower lip than on the upper lip, with the exception of skeletal class II malocclusion, in mixed dentition. Furthermore, we verified that the thickness and length of soft tissue has a more decisive effect on the inclination of the upper lips compared to that on the inclination of the lower lips. These findings suggest that changes of forms near the lips may be predicted to some extent based on the changes in incisor inclination in children with mixed dentition.

## References

1. Riedel RA : Esthetics and its relation to orthodontic therapy. *Angle Orthod*, 20:168-178, 1950.
2. Baek SH, Yang YS : A soft tissue analysis on facial esthetics of Korean young adults. *Korean J Orthod*, 21:131-170, 1991.
3. Tweed CH : The frankfort-mandibular incisor angle(FMIA) in orthodontic diagnosis, treatment planning and prognosis. *Angle Orthod*, 24:121-169, 1954.
4. Ricketts RM : The biologic significance of the divine proportion and fibonacci series. *Am J Orthodontics*, 81:351-370, 1982.

5. Merrifield LL : The profile line as an aid in critically evaluating facial esthetics. *Am J Orthodontics*, 52:804-822, 1966.
6. Peck H, Peck S : A concept of facial esthetics. *Angle Orthod*, 40:284-317, 1970.
7. Holdaway RA : A soft-tissue cephalometric analysis and its use in orthodontic treatment planning. Part I. *Am J Orthodontics*, 84:1-28, 1983.
8. Rudee DA : Proportion profile changes concurrent with orthodontic therapy. *Am J Orthodontics*, 50:421-434, 1964.
9. Hershey HG : Incisor tooth retraction and subsequent profile change in postadolescent female patients. *Am J Orthodontics*, 61:45-54, 1972.
10. Bloom LA : Perioral profile changes in orthodontic treatment. *Am J Orthodontics*, 47:371-379, 1961.
11. Garner LD : Soft-tissue changes concurrent with orthodontic tooth movement. *Am J Orthodontics*, 66:367-379, 1974.
12. Jacobs JD : Vertical lip changes from maxillary incisor retraction. *Am J Orthodontics*, 74:396-404, 1978.
13. Caplan MJ, Shcapuja KS : The effect of premolar extractions on the soft-tissue profile in adult African American. *Angle Orthod*, 67:129-136, 1997.
14. Yasutomi H, Ioi H, Counts AL, *et al.* : Effects of retraction of anterior teeth on horizontal and vertical lip positions in Japanese. *Orthod Waves*, 65:141-147, 2006.
15. Nanda RS, Meng H, Kapila S, Goorhis J : Growth changes in the soft tissue facial profile. *Angle Orthod*, 60:177-190, 1989.
16. Hwang CJ, Kil JK, Lim SA : Semi-longitudinal study on growth development of children aged 6 to 17. *Korean J Orthod*, 26:469-485 1996.
17. Kang SG, Lee YJ, Park YG : A comparative study of soft tissue profile between Korean and Caucasian young adults under NHP. *Korean J Orthod*, 33:323-337, 2003.
18. Subtelny JD : A longitudinal study of soft tissue facial structures and their profile characteristics, defined in relation to underlying skeletal structures. *Am J Orthodontics*, 45:481-507, 1959.
19. Riedel RA : An analysis of dentofacial relationships. *Am J Orthodontics*, 43:103-119, 1957.
20. Burstone CJ : The integumental profile. *Am J Orthodontics*, 44:1-25, 1958.
21. Prah-Andersen B, Ligthelm-Bakker ASWMR, Wattel E, Nanda R : Adolescent growth changes in soft tissue profile. *Am J Orthod Dentofac Orthop*, 107:476-483, 1995.
22. Posen JM : A longitudinal study of the growth of the nose. *Am J Orthodontics*, 53:746-756, 1967.
23. Lo FD, Hunter WS : Changes in nasolabial angle related to maxillary incisor retraction. *Am J Orthodontics*, 82:384-391, 1982.
24. Chung KR : A longitudinal study of soft-tissue facial profile changes in Korean children. *Korean J Orthod*, 19:7-20, 1989.
25. Wylie WL : The mandibular incisor-its role in facial esthetics. *Angle Orthod*, 25:32-41, 1955.
26. Ramos AL : Upper lip changes correlated to maxillary incisor retraction-a metallic implant study. *Angle Orthod*, 75:499-505, 2005.
27. Waldman BH : Change in lip contour with maxillary incisor retraction. *Angle Orthod*, 52:129-134, 1982.
28. Denis KL, Speidel TM : Comparison of three methods of profile change prediction in the adult orthodontic patient. *Am J Orthod Dentofac Orthop*, 92:396-402, 1987.
29. Sheideman GB, Bell WH, Legan HL, Reisch JS, *et al.* : Cephalometric analysis of dentofacial normals. *Am J Orthodontics*, 78:404-420, 1980.
30. Fitzgerald JP, Nanda RS, Currier GF : An evaluation of the nasolabial angle and the relative inclination of the nose and upper lip. *Am J Orthod Dentofac Orthop*, 102:328-334, 1992.

국문초록

## 혼합치열기 아동의 전치 경사도와 입술 경사도 사이의 상관관계

오성동 · 이제우 · 김진영 · 라지영

*원광대학교 치과대학 소아치과학교실*

본 연구는 7세에서 11세 사이의 혼합치열기 아동의 전치 경사도와 입술 경사도 사이의 연관성을 알아보고자 하였다. 353명의 측모 두부방사선 사진을 분석하여, 골격성 부정교합의 분류에 따른 상악 전치 경사도, 하악 전치 경사도, 하-비순각, 이순각을 평가하였다. 측정된 수치는 Kruskal-Wallis test와 피어슨 상관분석 및 다중회귀분석을 통해 평가하였다.

모든 골격성 부정교합에서 상악 전치 경사도와 상순 경사도 사이에는 유의한 음의 상관관계가 확인되었고, 하악 전치 경사도와 하순 경사도 사이에는 음의 상관관계가 확인되었으나 2급 부정교합에서는 유의할만한 양의 상관관계가 확인되었다.

본 연구를 통해 입술 경사도에 영향을 미치는 요인들을 확인하고 그 연관성을 확인할 수 있었다.