

First Case of Canine Infection with *Hepatozoon canis* (Apicomplexa: Haemogregarinidae) in the Republic of Korea

Seung-Joo Kwon¹, Yoon-Hee Kim², Hyun-Hee Oh³, Ul-Soo Choi^{1,*}

¹College of Veterinary Medicine, Chonbuk National University, Iksan 54596, Korea; ²Western Animal Medical Center, Seoul 04103, Korea;

³Kwangjin Animal Medical Center, Seoul 04975, Korea

Abstract: This report describes a dog infected with *Hepatozoon canis*, the first canine infection in the Republic of Korea. A 2-year-old intact male Maltese dog presented with anorexia and depression. Physical examinations revealed mild dehydration and hyperthermia (39.8°C), and blood analysis showed pancytopenia. Diff-Quik staining of blood smear specimens showed the presence of ellipsoidal shaped structures (gamonts of *H. canis*) within a small number of neutrophils. Real-time PCR analysis using whole blood confirmed infection by *H. canis*. The clinical condition of the dog improved after symptomatic treatment and administration of doxycycline. Although a molecular epidemiologic survey in Korea showed *H. canis* infection of dogs, to our knowledge this is the first report of a dog infection in Korea molecularly shown to be *H. canis*.

Key words: *Hepatozoon canis*, hepatozoonosis, dog, Korea

INTRODUCTION

Hepatozoonosis is an arthropod-borne infection caused by *Hepatozoon* species (Apicomplexa: Haemogregarinidae) [1,2]. *Hepatozoon* species are transmitted by hematophagous invertebrate definitive hosts such as ticks, mites, mosquitoes, fleas, lice, sandflies, tsetse flies, and reduviid bugs [3,4]. Unlike many arthropod-borne pathogens which are transmitted *via* the salivary glands, *Hepatozoon* infection is established when an intermediate vertebrate host (mammal, amphibian, reptile, and bird) ingests the infected definitive host [1]. After ingestion, sporozoites penetrate the intestinal wall and reach the hemolymphatic target organs (liver, spleen, and bone marrow) either hematogenously or via the lymph. Merogony occurs in these organs, and the resulting meronts contain merozoites that penetrate neutrophils and develop into gamonts that appear in the peripheral blood. The *Hepatozoon* life cycle is completed when a vector ingests the infected blood [3,5].

Only 2 species of hepatozoa, *Hepatozoon canis* and *Hepatozoon americanum*, have been known to infect dogs. The former occurs worldwide [1,5], whereas the latter occurs only in the southeast part of the United States [6,7]. There have been 2 reports on *Hepatozoon* infection in Korea. The first was a molecular survey of *H. canis* infection in dogs [8], and the second was the finding of *Hepatozoon felis* infection in a leopard cat [9]. The clinical signs associated with *H. canis* infection vary from negligible (asymptomatic) to severe and fatal disease with anemia, fever, lethargy, cachexia, and weight loss [2,10]. Most cases of *H. americanum* infection have severe clinical signs [2].

The standard diagnosis of *Hepatozoon* infection is by microscopic detection of intracellular ellipsoidal-shaped gamonts within neutrophils in peripheral blood smears and “wheel-spoke” meronts or monozyotic tissue cysts in histopathologic specimens [11]. More recent diagnostic techniques, such as an enzyme-linked immunosorbent assay, an indirect fluorescent antibody test, and the polymerase chain reaction (PCR), can also detect *Hepatozoon* infection [12,13].

This report describes the first dog molecularly diagnosed with *H. canis* infection in Korea and provides an overview of this case.

•Received 4 April 2016, revised 24 October 2016, accepted 11 November 2016.

*Corresponding author (uschoi@jbnu.ac.kr)

© 2017, Korean Society for Parasitology and Tropical Medicine

This is an Open Access article distributed under the terms of the Creative Commons Attribution Non-Commercial License (<http://creativecommons.org/licenses/by-nc/4.0>) which permits unrestricted non-commercial use, distribution, and reproduction in any medium, provided the original work is properly cited.

Table 1. Hematological findings of the present case

Analyte	Normal Range	Units	Day 1	Day 2	Day 2	Day 3
WBC	6.0-17.0	$\times 10^3/\mu\text{l}$	4.1	4.2	5.07	3.9
Neutrophils	3.0-11.8	$\times 10^3/\mu\text{l}$	2.7	1.9	1.09	1.4
Lymphocytes	1.0-4.8	$\times 10^3/\mu\text{l}$	1.4	2	2.68	2.2
Monocytes	0.2-1.4	$\times 10^3/\mu\text{l}$	-	0.2	1	0.2
Eosinophils	0.1-1.3	$\times 10^3/\mu\text{l}$	-	0.1	0.08	0.1
RBC	5.50-8.50	$\times 10^6/\mu\text{l}$	4.41	3.59	3.58	3.83
Hgb	12.0-18.0	g/dl	11.1	9.2	8.7	9.7
Hct	37.0-55.0	%	29.9	24.2	26	26.1
MCV	60.0-74.0	fL	67.8	67.4	72.8	68.1
MCH	19.5-24.5	Pg	25.2	25.6	24.3	25.3
MCHC	31.0-36.0	g/dl	37.1	38	33.4	37.2
RDW	11.0-15.5	%	13.3	12.6	11.6	13.4
PLT	200-500	$\times 10^3/\mu\text{l}$	148	147	121	190
MPV	5.0-15.0	fL	6.1	6.7	14	6.6

Table 2. Results of serum chemistry in the present case

Analyte	Normal Range	Units	Day 1
Total protein	5.0-7.2	g/dl	7.3
Albumin	2.6-4.0	g/dl	2.8
Globulin	2.0-5.0	g/dl	4.5
ALT	17-78	U/L	34
AST	17-44	U/L	27
ALP	47-254	U/L	537
GGT	5-14	U/L	6
BUN	9.2-29.2	mg/dl	12.3
Creatinine	0.4-1.4	mg/dl	0.2
Glucose	75-128	mg/dl	64
Amylase	200-1,400	U/L	921
Lipase	10-160	U/L	27
Sodium	141-152	mmol/L	140
Potassium	3.8-5.0	mmol/L	3.8
Chloride	102-117	mmol/L	101

CASE RECORD

In August 2015, a 2-year-old intact male Maltese dog weighing 2.5 kg presented to the Kwangjin Animal Medical Center (Gwangjin-gu, Seoul, Korea) with signs of anorexia and depression. Mild dehydration, pale mucous membranes, and hyperthermia (39.8°C) were detected in the physical examination, although cardiac auscultation was normal. Table 1 and Table 2 show the results of the clinical and pathological examinations. A complete blood count (CBC) indicated leukopenia (4,100 cells/ μl , normal range: 6,000-17,000 cells/ μl), moderate anemia (PCV 29.9%, normal range: 37-55%), and mild thrombocytopenia (148,000 cells/ μl , normal range: 200,000-500,000 cells/ μl). Serum biochemistry showed mild hypoglycemia, mild hyperproteinemia, increased alkaline phosphatase, and decreased serum creatinine, sodium, and chloride concentrations.

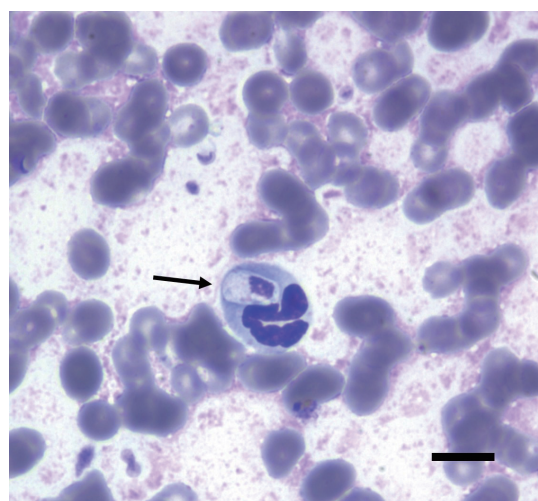


Fig. 1. Diff-Quik-stained peripheral blood smear ($\times 1,000$) on the first day of hospitalization, showing an ellipsoidal-shaped structure within a neutrophil, indicative of an *Hepatozoon canis* gamont (arrow). Bar = 10 μm .

tase, and decreased serum creatinine, sodium, and chloride concentrations.

The serologic tests for canine parvovirus (CPV) and canine distemper virus (CDV) using commercial diagnostic kits (CPV Antigen Test Kit and CDV Antigen Test Kit, Bionote, Hwaseong, Korea) were negative. The results of urinalysis were nonspecific, but the specific gravity was greater than 1.050, suggesting dehydration. Plain radiography and ultrasonography findings were unremarkable. A blood smear examination with Diff-Quik staining indicated large intracellular ellipsoidal-shaped structures within a small number of neutrophils (Fig. 1). These structures were morphologically consistent with *H. canis* gamonts. An EDTA whole blood sample was submitted to IDEXX

Reference Laboratories for real-time PCR analysis (Canine Anemia RealPCR™ Panel, IDEXX Laboratories, Westbrook, Maine, USA).

While waiting for the real-time PCR results, the symptoms were managed by fluid therapy, antibiotics (cimetidine, metoclopramide, enrofloxacin, and metacam), and regular measurements of body temperature. The symptoms subsided slightly, and the body temperature decreased gradually to 38.1°C. On day 3 after presentation, the pancytopenia was not resolved, but the clinical signs were less severe and the body temperature returned to the normal range. Additional oral doxycycline (10 mg/kg, p.o., q 24 hr) was prescribed and the dog was discharged from the hospital. Soon after this, the real-time PCR results indicated the DNA of *H. canis*. There were no signs of recurrence at 5 months after the initial presentation.

DISCUSSION

H. canis infection was first reported in dogs from India in 1905 [14], and many studies since then have reported on the epidemiology, transmission, pathogenesis, and diagnostic methods of *H. canis* infection [3,5,10,15]. In Korea, there have been a few reports on hepatozoonosis. A molecular survey of infections in 184 dogs in the province of Jeju-do in 2008 found that 16 dogs (8.7%) were infected with *H. canis*, 14 dogs (7.6%) were infected with *Babesia gibsoni*, and 6 dogs (3.3%) were infected with both [8], and a leopard cat, *Prionailurus bengalensis*, in Korea was reported to be infected with *H. felis* in 2010 [9]. Although the molecular epidemiologic survey confirmed *H. canis* infection in Korean dogs, to our knowledge this is the first report of a dog diagnosed with *H. canis* infection in Korea.

There is a close relationship between the distribution of *H. canis* and its acarine definitive hosts. The brown dog tick, *Rhipicephalus sanguineus*, is the most important vector in the life cycle of *H. canis* [3], with a study showing experimental transmission of *H. canis* using *R. sanguineus* [16]. This tick species has a nearly worldwide distribution, and is more common in warmer climates [17]. However, studies of tick populations found that *R. sanguineus* was not present in Korea. For example, an analysis of 3,135 ixodid ticks collected from vegetation and small mammals (wild rodents and insectivores) showed that 2,071 could be identified as *Haemaphysalis longicornis*, 115 as *Haemaphysalis flava*, 9 as *Ixodes turdus*, 3 as *Ixodes persulcatus*, 20 as *Ixodes nipponensis*, and 287 as other *Ixodes* species [18]. Another study of 918 ixodid ticks found that the most com-

mon was *H. longicornis* (54.4%), followed by other species of the genera *Haemaphysalis* and *Ixodes* [19]. An assay of 565 ixodid ticks collected from domestic livestock (cows) also found that the most common tick was *H. longicornis* (87.4%), with other ticks including *Boophilus microplus*, *I. persulcatus*, *R. sanguineus*, *Argas vespertilionis*, and an unidentified species [20].

Similar results were observed in a study of 220 ticks collected from 14 of 58 dogs infected with *H. canis* in Japan [21]. These ticks were members of the genera *Haemaphysalis* and *Ixodes*, but none was found to be *R. sanguineus*. Histopathologic examination detected oocysts is similar to those of *H. canis* in the haemocoel of *H. longicornis* and *H. flava*, suggesting that *H. longicornis* and *H. flava* may be potential vectors of *H. canis* infection. Although the actual vector is unknown in the present case, this dog was likely infected by a *Haemaphysalis* species because these are relatively common in Korea.

There is an association between the level of parasitemia and the severity of clinical signs, however most dogs infected with *H. canis* are asymptomatic or only exhibit mild clinical signs. A case-control study of dogs with *H. canis* infections reported the high parasitemia group was more anemic and neutrophilic than the low parasitemia group and that the high parasitemia group had severe systemic clinical signs including lethargy, fever, weight loss, anorexia, and pale mucous membranes [22]. The dog in the present case had a very low parasite load (less than 1%), so there were only mild clinical signs, and it is possible that the clinical signs improved only due to the administration of symptomatic therapy. It was peculiar that pancytopenia was present in the CBC results. Anemia is the most common blood abnormality in *H. canis* infections, although a low platelet count occasionally occurs in dogs [10]. The leukocyte count is commonly within the reference interval when the parasitemia is low, but is increased when the parasitemia is high [1]. However, the dog in the present case had leukopenia. Previous studies reported that parasitized neutrophils have reduced myeloperoxidase activity [23] and deficient oxidative bactericidal capacity [24]. Therefore, the leukopenia in the present case might be attributed to a concomitant underlying inflammation.

To date, there has been only 1 report of *Hepatozoon* infection in a person. This patient presented with anemia and icterus, and histopathologic examinations showed gamonts of *Hepatozoon* in peripheral blood leukocytes. However, there were no parasites in the liver or bone marrow of this patient. Although the importance of *Hepatozoon* spp. in zoonotic diseases and

public health has not been determined, the likelihood of dog-to-human transmission is apparently low because *Hepatozoon* infection occurs following ingestion of an infected tick. However, caution should be exercised when removing ticks from dogs or when handling infected dogs [1].

The present report is the first molecular and biochemical diagnosis of *H. canis* infection in a dog from Korea. *H. canis* infection should be considered in the differential diagnosis of dogs with fever or anemia.

ACKNOWLEDGMENT

This work was supported by research funds of Chonbuk National University in 2016.

CONFLICT OF INTEREST

All authors declare no conflict of interest.

REFERENCES

- Greene CE. Infectious Diseases of The Dog and Cat. 4th ed. Missouri, USA. Elsevier Saunders. 2012, pp. 750-757.
- Baneth G, Mathew JS, Shkap V, Macintire DK, Barta JR, Ewing SA. Canine hepatozoonosis: two disease syndromes caused by separate *Hepatozoon* spp. *Trends Parasitol* 2003; 19: 27-31.
- Baneth G, Samish M, Alekseev E, Aroch I, Shkap V. Transmission of *Hepatozoon canis* to dogs by naturally-fed or percutaneously-injected *Rhipicephalus sanguineus* ticks. *J Parasitol* 2001; 87: 606-611.
- Smith TG. The genus *Hepatozoon* (Apicomplexa: Adeleina). *J Parasitol* 1996; 82: 565-585.
- Baneth G, Samish M, Shkap V. Life cycle of *Hepatozoon canis* (Apicomplexa: Adeleorina: Hepatozoidae) in the tick *Rhipicephalus sanguineus* and domestic dog (*Canis familiaris*). *J Parasitol* 2007; 93: 283-299.
- Vincent-Johnson NA, Macintire DK, Lindsay DS, Lenz SD, Baneth G, Shkap V, Blagburn BL. A new *Hepatozoon* species from dogs: description of the causative agent of canine hepatozoonosis in North America. *J Parasitol* 1997; 83: 1165-1172.
- Baneth G, Barta JR, Shkap V, Martin DS, Macintire DK, Vincent-Johnson N. Genetic and antigenic evidence supports the separation of *Hepatozoon canis* and *Hepatozoon americanum* at the species level. *J Clin Microbiol* 2000; 38: 1298-1301.
- Kwak DH, Kim YG, Ji HJ, Lee KK, Yun YM. Molecular survey of *Babesia gibsoni* and *Hepatozoon canis* infection in dogs from Jeju island. *J Vet Clin* 2008; 10: 154 (in Korean).
- Kubo M, Jeong A, Kim SI, Kim YJ, Lee H, Kimura J, Agatsuma T, Sakai H, Yanai T. The first report of *Hepatozoon* species infection in leopard cats (*Prionailurus bengalensis*) in Korea. *J Parasitol* 2010; 96: 437-439.
- Baneth G, Weigler B. Retrospective case-control study of *Hepatozoonosis* in dogs in Israel. *J Vet Intern Med* 1997; 11: 365-370.
- Otranto D, Dantas-Torres F, Weigl S, Latrofa MS, Stanneck D, Decapriaris D, Capelli G, Baneth G. Diagnosis of *Hepatozoon canis* in young dogs by cytology and PCR. *Parasit Vectors* 2011; 4: 55.
- Li Y, Wang C, Allen KE, Little SE, Ahluwalia SK, Gao D, Macintire DK, Blagburn BL, Kaltenboeck B. Diagnosis of canine *Hepatozoon* spp. infection by quantitative PCR. *Vet Parasitol* 2008; 157: 50-58.
- Gonen L, Strauss-Ayali D, Shkap V, Vincent-Johnson N, Macintire DK, Baneth G. An enzyme-linked immunosorbent assay for antibodies to *Hepatozoon canis*. *Vet Parasitol* 2004; 122: 131-139.
- James SP. On a parasite found in the white corpuscles of the blood of dogs. *Sci Mem Offrs Med Sanit Deps India* 1905; 14: 1-12.
- Craig TM, Smallwood JE, Knauer KW, McGrath JP. *Hepatozoon canis* infection in dogs: clinical, radiographic, and hematologic findings. *J Am Vet Med Assoc* 1978; 173: 967-972.
- Nordgren RM, Craig TM. Experimental transmission of the Texas strain of *Hepatozoon canis*. *Vet Parasitol* 1984; 16: 207-214.
- Dantas-Torres F. The brown dog tick, *Rhipicephalus sanguineus* (Latreille, 1806) (Acari: Ixodidae): from taxonomy to control. *Vet Parasitol* 2008; 152: 173-185.
- Kim CM, Yi YH, Yu DH, Lee MJ, Cho MR, Desai AR, Shringi S, Klein TA, Kim HC, Song JW, Baek LJ, Chong ST, O'guinn ML, Lee JS, Lee IY, Park JH, Foley J, Chae JS. Tick-borne rickettsial pathogens in ticks and small mammals in Korea. *Appl Environ Microbiol* 2006; 72: 5766-5776.
- Kim HC, Han SH, Chong ST, Klein TA, Choi CY, Nam HY, Chae HY, Lee H, Ko S, Kang JG, Chae JS. Ticks collected from selected mammalian hosts surveyed in the Republic of Korea during 2008-2009. *Korean J Parasitol* 2011; 49: 331-335.
- Kang YB. Studies on tick eradication in Korea (1982-1984). Special project for animal health. *Ann Rep Inst Vet Res, Rural Develop Admin* 1984: 269-305.
- Murata T, Inoue M, Taura Y, Nakama S, Abe H, Fujisaki K. Detection of *Hepatozoon canis* oocyst from ticks collected from the infected dogs. *J Vet Med Sci* 1995; 57: 111-112.
- Karagenc TI, Pasa S, Kirli G, Hosgor M, Bilgic HB, Ozon YH, Atasoy A, Eren H. A parasitological, molecular and serological survey of *Hepatozoon canis* infection in dogs around the Aegean coast of Turkey. *Vet Parasitol* 2006; 135: 113-119.
- Ibrahim ND, Rahamathulla PM, Njoku CO. Neutrophil myeloperoxidase deficiency associated with canine hepatozoonosis. *Int J Parasitol* 1989; 19: 915-918.
- Murata T, Tagami R, Inoue M, Uzuka Y, Taura Y, Nakama S. Investigation of nitroblue tetrazolium reduction of neutrophils in the dog infected with *Hepatozoon canis*. *Jikken Dobutsu* 1994; 43: 101-103 (in Japanese).