

RESEARCH ARTICLE

Open Access



# Circadian rhythm of melatonin secretion and growth-related gene expression in the tiger puffer *Takifugu rubripes*

Byeong-Hoon Kim<sup>1†</sup>, Sung-Pyo Hur<sup>5†</sup>, Sang-Woo Hur<sup>2</sup>, Yuki Takeuchi<sup>3</sup>, Akihiro Takemura<sup>4</sup> and Young-Don Lee<sup>1,6\*</sup>

**Abstract:** Somatostatin (SS) and growth hormone-releasing hormone (GHRH) are primary factors regulating growth hormone (GH) secretion in the pituitary. To date, it remains unknown how this rhythm is controlled endogenously, although there must be coordination of circadian manners. Melatonin was the main regulator in biological rhythms, and its secretion has fluctuation by photic information. But relationship between melatonin and growth-related genes (*ghrh* and *ss*) is unclear. We investigated circadian rhythms of melatonin secretion, *ghrh* and *ss* expressions, and correlation between melatonin with growth-related genes in tiger puffer *Takifugu rubripes*. The melatonin secretion showed nocturnal rhythms under light and dark (LD) conditions. In constant light (LL) condition, melatonin secretion has similar patterns with LD conditions. *ss1* mRNA was high during scotophase under LD conditions. But *ss1* rhythms disappeared in LL conditions. *Ghrh* appeared opposite expression compared with melatonin levels or *ss1* expression under LD and LL. In the results of the melatonin injection, *ghrh* and *ss1* showed no significant expression compared with control groups. These results suggested that melatonin and growth-related genes have daily or circadian rhythms in the tiger puffer. Further, we need to know mechanisms of each *ss* and *ghrh* gene regulation.

**Keywords:** Photoperiod, Melatonin, Somatostatin, GHRH, Tiger puffer

## Background

Biological rhythms are controlled by many environmental changes including light, temperature, universal gravitation, and weather conditions (Fraser et al. 1993; Forward et al. 1998; Wan et al. 2013; Guerra-Santos et al. 2017). In non-mammalian vertebrates, photic signals are transmitted via neural pathways from the retina to the pineal gland. These signals control the secretion of various hormones (Iigo et al. 1997; Ayson and Takemura 2006; Revel et al. 2006; Moore and Menaker 2011; Hur et al. 2011).

Body growth is enhanced by growth hormone (GH), which is released from the pituitary gland in vertebrates (McLean et al. 1997; Raven et al. 2012; Fuentes et al. 2013). The secretion of GH is primarily controlled by growth hormone-releasing hormone (GHRH) and

somatostatin (SS), which are synthesized in the hypothalamus (Klein and Sheridan 2008; Luque et al. 2008). Moreover, IGF-1, which is secreted from the liver, is also known to control body growth through interactivity with GH (Wood et al. 2005). Studies show that GH secretion is controlled by various environmental factors such as temperature and photoperiod.

GHRH is a member of the glucagon superfamily, and its primary function is to stimulate GH synthesis and secretion by binding to GHRH receptors (GHRHR) in the anterior pituitary. Recent studies in fish show that GHRH and pituitary adenylate cyclase-activating peptide (PACAP) encodings differ by only a single gene, and GH induction in the pituitary gland by GHRH has been identified (Lee et al. 2007). In contrast, SS has been widely detected not only in the central nervous system but also in peripheral tissues. It inhibits GH secretion in the pituitary (Very et al. 2001). These two GH-regulating hormones, GHRH and SS, have opposing functions: GHRH enhances GH release from the pituitary *in vivo* and *in vitro*, while SS inhibits its secretion in many teleost fishes (Canosa et al. 2007).

\* Correspondence: leemri@jejunu.ac.kr

†Equal contributors

<sup>1</sup>Marine Science Institute, Jeju National University, Jeju 6333, South Korea  
<sup>6</sup>19-5, Hamdeok 5(o)-gill, Jocheon, Jeju Special Self-Governing Province 695-965, Republic of South Korea

Full list of author information is available at the end of the article



Melatonin is an indole-derived hormone that is synthesized in the retina and pineal gland. The secretion of this hormone is primarily controlled by environmental light conditions in vertebrates, including fish. The plasma melatonin level in Mozambique tilapia *Oreochromis mossambicus* increases during the night and decreases at day (Nikaido et al. 2009). Although it has been suggested that melatonin secretions affect physiological functions, including body growth in fish (Taylor et al. 2005; Herrero et al. 2007; De Pedro et al. 2008; Maitra et al. 2013), the effect of melatonin on the transcription of growth-related genes (*ghrh* and *ss*) is still unclear.

The tiger puffer *Takifugu rubripes* is a commercially valuable species in South Korea. The aim of the present study is to profile its growth-related gene expressions and to evaluate the effect of melatonin on expressions of these genes.

## Methods

### Animal

A total of 200 tiger puffer *T. rubripes* (body weight  $128.4 \pm 2.1$  g, body length  $18.7 \pm 0.1$  cm) were used in this study. Fish were obtained from the Tham-Ra Fishery located in Soegwipo, Jeju, South Korea, and transported to Marine Research Institute, Jeju National University. The fish were acclimatized under natural photoperiod and water temperature (20–21 °C). The fish were fed commercial pellets (Daehan co., MP3, Busan, South Korea) equivalent to 1 to 2% of body weight at 0900 and 1600 h daily.

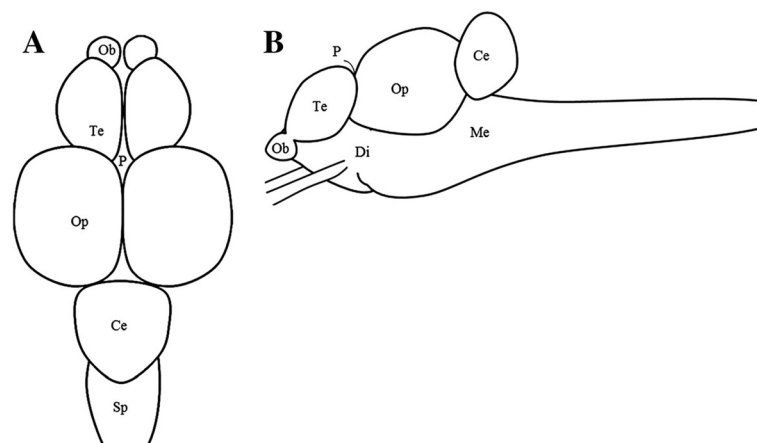
Distribution of growth-related genes in the parts of brain were examined by RT-PCR and real-time quantitative RT-PCR (Real-time PCR). The fish ( $n = 4$ ) brain were divided to five portions each, the telencephalon, optic tectum, diencephalon, cerebellum, and medulla

oblongata (Hur et al. 2011) (Fig. 1). Sampling was conducted at 1200 h during the daytime, and sampling methods was explained above.

For the circadian variation, fish were adapted under 12-h light and 12-h dark photoperiod condition (12L:12D, light on = 0800 h and light off = 2000 h) for 1 week. After adapted, fish were divided into two groups; 12L:12D group and 24-h light photoperiod condition (24L) group. The 12L:12D group fish ( $n = 98$ , BW  $126.2 \pm 4.1$  g, TL  $18.0 \pm 0.2$  cm) and 24L group fish ( $n = 98$ , BW  $136.4 \pm 3.1$  g, TL  $19.0 \pm 0.2$  cm) were reared for 3 days. Fish were anesthetized in MS-222 and killed by decapitation at 4-h intervals for 1 day at zeitgeber time (ZT) 2, ZT 6, ZT 10, ZT 14, ZT18, and ZT 22 for 12L:12D group and circadian time (CT) 2, CT 6, CT 10, CT 14, CT 18, and CT 22 for 24L group fish. The two experimental groups were sampled at the same time in different light conditions. The sampling at darkness time was conducted under red dim light, and blood plasma, diencephalon, and pituitary were collected as described above. The collected blood plasma were used in melatonin levels' analysis, and diencephalon tissues were used in *ghrh1*, *ghrh2*, and *ss* mRNA expression analysis by fluoroimmuno assay (TR-FIA) and real-time qPCR. The experimental procedures followed the guidance approved by the Animal Care and Use committees of Jeju National University, Jeju, South Korea.

### Melatonin intraperitoneal injection

A total of 20 fish were used for the effects of melatonin with several growth-related genes. Fish were reared under natural photoperiod and water temperature. The one group of fish was melatonin (Sigma, 1 mg/kg,  $n = 10$ ) treated by intraperitoneal injection (i.p.), and the other group was injected with the only vehicle solution (0.6% of saline,  $n = 10$ ) at 1100 h. The fish of melatonin



**Fig. 1** Diagram showing dorsal view (a) and sagittal plane (b) of the puffer fish brain. Ob olfactory bulb, Te telencephalon, Op optic tectum, Ce cerebellum, P pineal gland, PON preoptic nucleus, Sp spinal cord

i.p. and vehicle groups were sampled melatonin i.p. after 1 h. Fish were anesthetized with MS-222 before sampling, and tissues were collected (diencephalon and pituitary) by decapitation. The collected samples were kept at  $-80^{\circ}\text{C}$  until the analysis.

#### Plasma melatonin measurement

The levels of melatonin were measured by time-resolved fluoroimmuno assay (TR-FIA) according to the previous report (Takemura et al. 2004). Briefly, a 96-well plate (AGC Techno Glass) was coated with 50 mM carbonate buffer, pH 9.6 (100  $\mu\text{l}$ /well), containing a melatonin-bovine serum albumin (BSA) conjugate (5 ng/ml) for 2 h at  $24 \pm 0.5^{\circ}\text{C}$  in an incubator (Sanyo). After three washes with DELFIA wash buffer, 50  $\mu\text{l}$  of samples/standards (7.8–4000 pg/ml) and 50  $\mu\text{l}$  of anti-melatonin (1:200,000 in assay buffer) were placed in the wells. The plate was incubated overnight at  $4^{\circ}\text{C}$ . After washing, 100  $\mu\text{l}$  of the secondary antibody against rabbit immunoglobulin G labeled with europium (1:1000 in assay buffer) was added to the well and incubated at  $24^{\circ}\text{C}$  for 1 h. After washing, 50  $\mu\text{l}$  of DELFIA enhancement solution was added to the wells. The signal in each well was quantified using a time-resolved fluorometer (Arcus1234, Wallac, Oy, Finland). The composition of the assay buffer (pH 7.75) used in the present study was 0.05 M Tris, 0.9% NaCl, 0.5% BSA, (Sigma), 0.05%  $\text{NaN}_3$ , 0.01% Tween 40, and 20 mM diethylenetriaminepentaacetic acid (DTPA, Kanto Chemicals, Tokyo, Japan). DELFIA washing buffer (pH 7.75) contained 0.05 M Tris, 0.9% NaCl, 0.1%  $\text{NaN}_3$ , and 0.01% Tween 20.

#### RT-PCR and real-time quantitative PCR

Total RNA was extracted from the tissues of tiger puffer using the RNAiso Reagent (TaKaRa Bio, Japan) after absolutely homogenizing the samples. And 1  $\mu\text{g}$  of total RNA was used for synthesis of first strand cDNA by Transcriptor First strand cDNA synthesis kit (Roche Diagnostics, Mannheim, Germany). Primer sets of each genes were designed by isolated *ghrh1* (Gene bank, accession number; DQ659331), *ghrh2* (DQ659332), *ss1* (XM\_003968318), and  *$\beta$ -actin* (U37499) of tiger puffer from National Center for Biotechnology Information (NCBI, Table 1). For the RT-PCR, each PCR reaction mix contained 50% of Emerald PCR Master mix (TaKaRa-Bio), 10  $\mu\text{m}$  of each forward and reverse primer, and 50 ng of cDNA template. The RT-PCR cycling conditions were followed by 28 cycles of denaturation for 45 s at  $94^{\circ}\text{C}$ , annealing for 45 s at  $58^{\circ}\text{C}$ , and extension for 1 min at  $72^{\circ}\text{C}$ . The real-time quantitative PCR was performed using the CFX™ Real-time System (Bio-Rad, Hercules, CA, USA) with 20 ng of cDNA using FastStart Universal SYBR Green Master (Roche Diagnostics). The real-time quantitative PCR amplification was performed by initial denaturation at  $95^{\circ}\text{C}$  for 10 min, 40 cycles of  $95^{\circ}\text{C}$  for 15 s,  $60^{\circ}\text{C}$  for 1 min, and last  $60^{\circ}\text{C}$  for

**Table 1** Primer sets used in this study

Primers	Sequence (5'-3')	GeneBank Accession No.
<i>ss1</i> -F	TCTGCT ACT GCAGT CCAACG CCTT	XM_003968318
<i>ss1</i> -R	CAGCCAGAGCAAGGTT	
<i>ghrh1</i> -F	TACAGCGT CAT CT GCT CACC	DQ659331
<i>ghrh1</i> -R	GAAGGAGT AGAGGT CGT CAGC	
<i>ghrh1</i> -V	AGCGT CTT CT GCACACCT AT C	DQ659332
<i>ghrh1</i> -R	AGT ACGCAT CGTCGTCTACC	
<i>yS-actin</i> -F	GCCAT CCTT CCTT GGT AT GGA	U37499
<i>yS-actin</i> -R	GT CGT ACT CCT GCTT GCT GA	

1 min. Growth-related gene expressions in diencephalon were normalized to amount of the internal control  $\beta$ -actin gene.

#### Statistical analysis

The plasma melatonin levels and growth-related genes were expressed as means  $\pm$  SEM and considered significantly different at  $P < 0.05$ . Data were analyzed by one-way analysis of variance (ANOVA) followed by Tukey's test to assess statistically significant differences among the different time points in the daily and circadian variation experiments. The significant differences of growth-related gene expression after melatonin injection were tested by Student's *t* test.  $P < 0.05$  was considered significant.

## Results

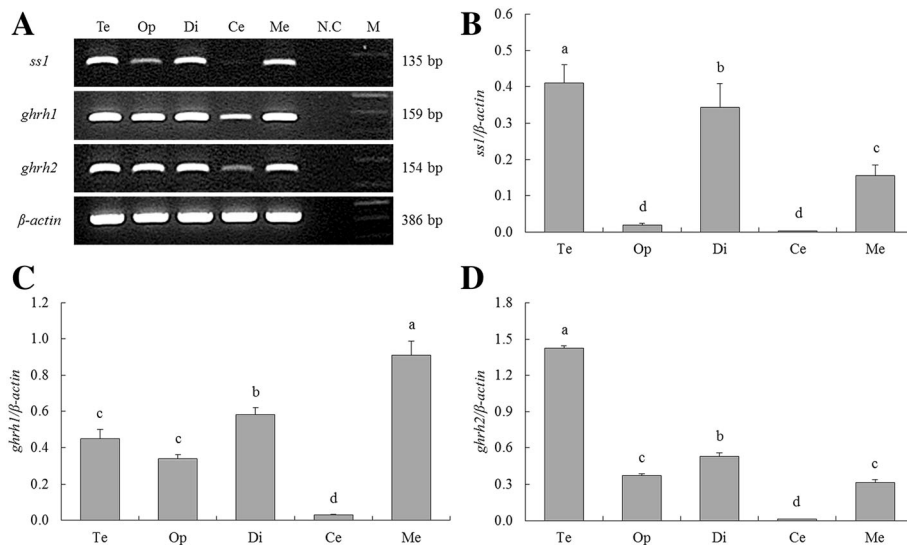
#### The mRNA expression of growth-related genes in central nerves tissues

We profiled the distribution of the growth-related gene expression in the several parts of the tiger puffer brain by RT-PCR (Fig. 2a) and real-time qPCR (Fig. 2b–d). The *ss1* expression was detected in the telencephalon (Te), optic tectum (Op), diencephalon (Di), and medulla oblongata (ME) but not in the cerebellum (Ce), while the *ghrh1* and *ghrh2* seemed to express in the all parts of the brain (Fig. 2a).

The *ss1* was significantly highly expressed in the Te, Di, and ME than Op and Ce (Fig. 2b). The significantly highest expression of *ghrh1* was observed in the ME, and the highest expression of *ghrh2* was detected in the Te (Fig. 2c, d).

#### Daily and circadian rhythm of melatonin and growth-related genes

Plasma melatonin levels were significantly elevated at the middle of the night (ZT18), and its higher level was kept until the dark phase under 12L:12D conditions (Fig. 3a). When the fish were reared under 24L conditions, the plasma melatonin showed similar patterns with that under



**Fig. 2** Tissue-specific expression of growth-related genes in the portion of the brain of tiger puffer. The brain was further divided into five parts. They were analyzed by RT-PCR (a) and qPCR (b–d). The expression of  $\beta$ -actin mRNA was used as reference. *Te* telencephalon, *Op* optic tectum, *Di* diencephalon, *Ce* cerebellum, *Me* medulla oblongata, *N.C* negative control, *M* 100 bp DNA ladder marker. Means represented by different letters are significant ( $P < 0.05$ ). Values are mean  $\pm$  SEM

12L:12D conditions (Fig. 3b). Under 12L:12D conditions, *ss1* expression in the diencephalon was more increased during scotophase than photophase (Fig. 4a). *ss1* mRNA showed the highest expression at ZT18, and the lowest expression was detected at ZT2. However, this significant ( $P < 0.05$ ) expression patterns disappear under 24L conditions (Fig. 4b).

Each *ghrh1* and *ghrh2* mRNA in the diencephalon showed alike expression patterns under 12L:12D and 24L conditions. Expression of *ghrh1* mRNA was more increased during photophase than scotophase under 12L:12D conditions, but its rapidly low expression was detected in ZT6 (Fig. 5a). Under 24L conditions, *ghrh1* mRNA showed different expression patterns compared with 12L:12D conditions, and this mRNA detected no sudden low expression in CT6 (Fig. 5b). *ghrh2* mRNA showed alike expression pattern with *ghrh1* mRNA under all experiment conditions (Fig. 6a, b). This gene revealed significant expressions under 12L:12D and 24 L conditions. But, this gene detected no significant expression between photophase and scotophase.

#### Effect of melatonin treatment on the expressions of growth-related genes

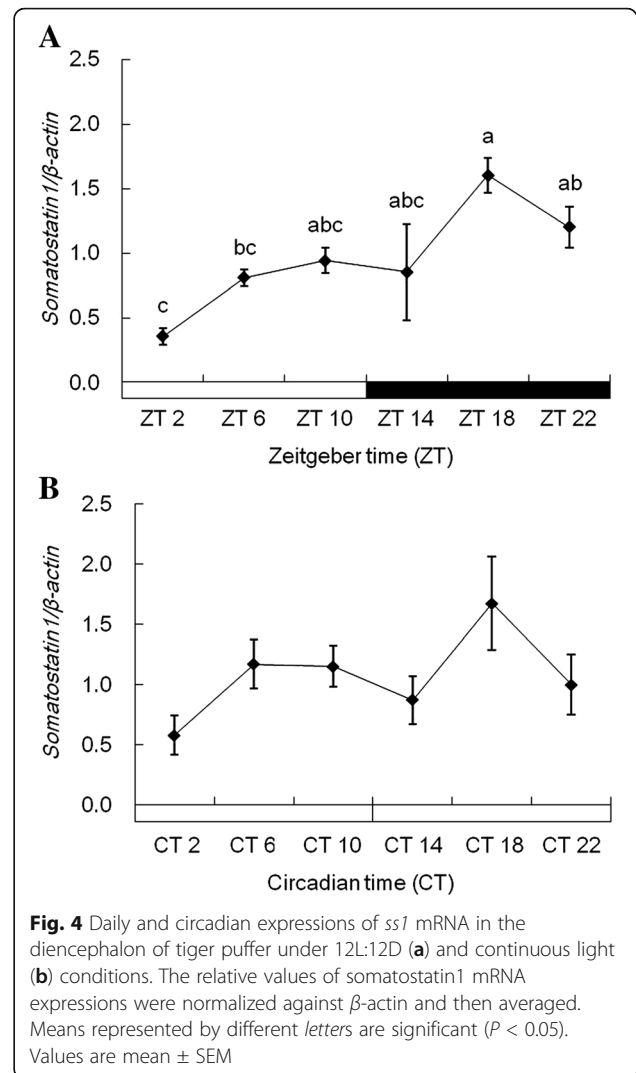
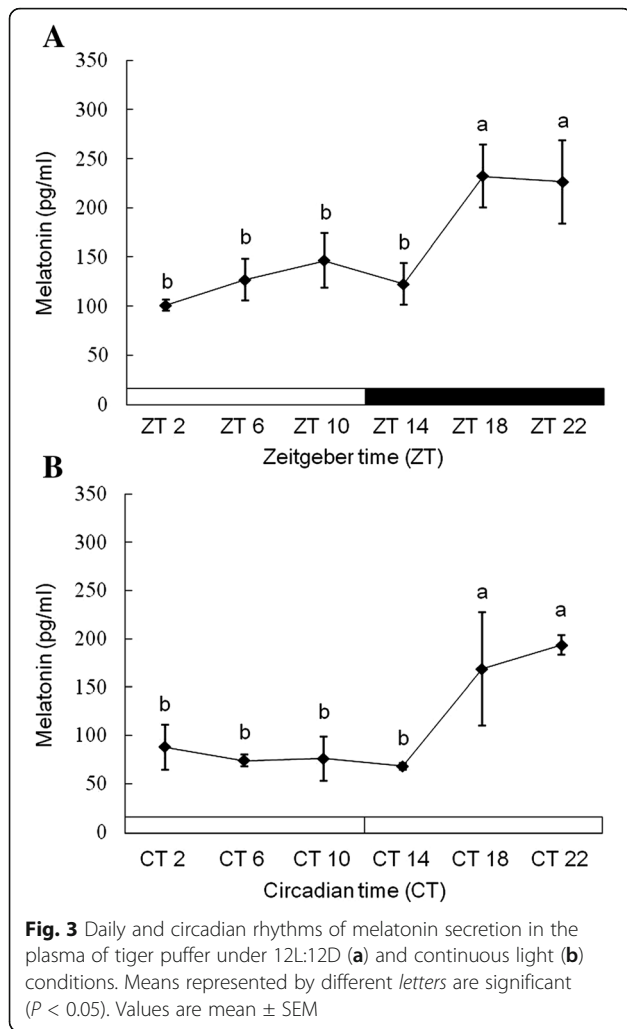
The expression of growth-related genes in the diencephalon and pituitary after melatonin i.p. were analyzed by qPCR. One hour after melatonin i.p., *ss1* mRNA showed higher expression levels in melatonin group than saline group (Fig. 7a). However, *ghrh1* and *ghrh2* mRNA after melatonin i.p. showed no different expression in the melatonin group with saline group (Fig. 7b, c).

#### Discussion and conclusions

Photoperiod is a well-known regulation factor for many physiological responses in fish, including growth and development (Norberg et al. 2001; Taylor et al. 2005; Biswas et al. 2008; Gunnarsson et al. 2012). In this study, we decided to evaluate the effect of light/dark cycle on the expression of growth-related genes in the tiger puffer.

The distribution of growth-related genes in the brain tissue was evaluated using RT-PCR and qPCR. The data revealed widespread distribution of these genes in the brain (Fig. 2), similar to that in the orange-spotted grouper *Epinephelus coioides* (Xing et al. 2005; Qian et al. 2012). In the orange-spotted grouper, the expression of *ss* mRNA was detected in all brain regions, excluding the epithalamus. *Ghrh* mRNA was also expressed in many brain regions. These data suggest that *ss* and *ghrh* expression may mediate not only GH secretion in the pituitary but also multiple biological functions in the tiger puffer.

The daily and circadian regulation of melatonin is well known in vertebrates, including fish. Plasma melatonin levels in the Senegalese sole *Solea senegalensis* showed typical daily rhythms consisting of low levels during photophase and high levels during scotophase (Bayarri et al. 2004). For tench *Tinca tinca* identified the circadian secretion of melatonin under continuous dark conditions as well as light and dark conditions (Oliveira et al. 2009). Our experimental data showed similar results; plasma melatonin secretion in tiger puffers increased during the dark phase in 12L:12D conditions (Fig. 3a). Similar melatonin secretion patterns were found during



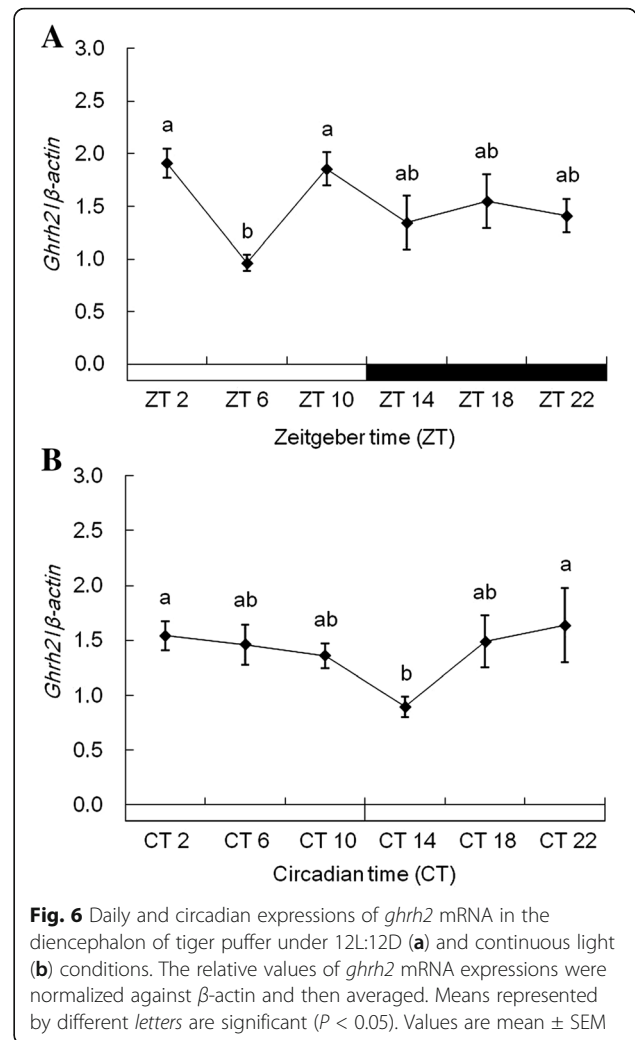
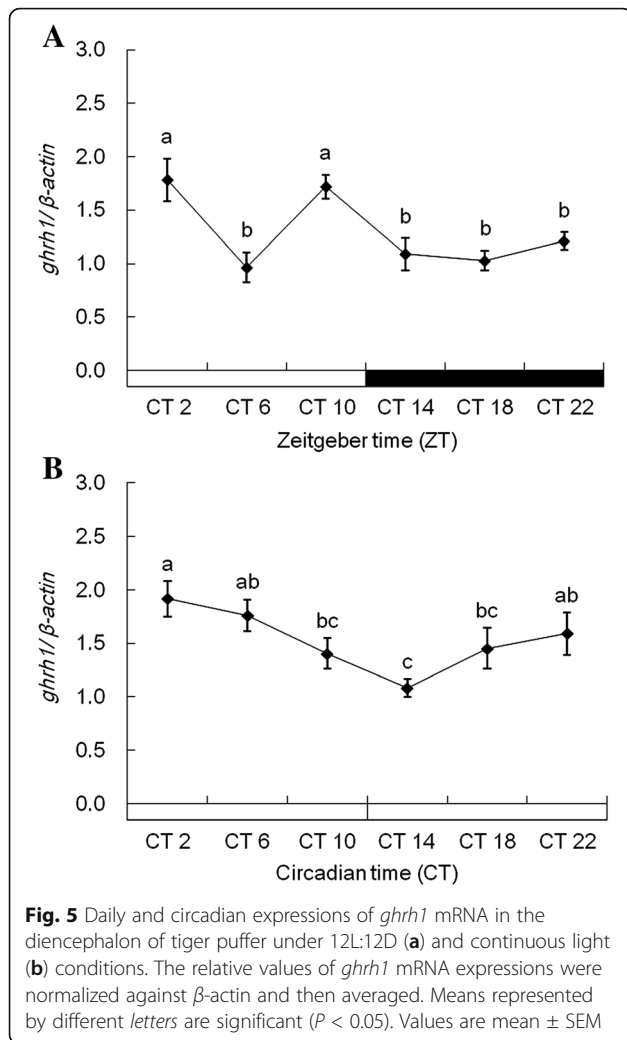
continuous light conditions (Fig. 3b). In some fishes, the rise of melatonin secretion during scotophase is controlled using an endogenous clock. In pike *Esox* and zebrafish *Danio rerio*, the expression of the melatonin synthesis gene (arylalkylamine *N*-acetyltransferase (AANAT)) shows nocturnal rhythms in 12L:12D conditions, and this gene has similar expression rhythms during continuous light or dark conditions (Bégay et al. 1998). These fish have circadian rhythms of high secretion during scotophase caused by the circadian oscillation of the AANAT gene via an endogenous clock. Therefore, we suggest that melatonin have the circadian rhythm in the tiger puffer.

SS and GHRH regulate the synthesis and secretion of GH in the pituitary of vertebrates, including fish (Bertherat et al. 1995; Sheridan and Hagemester 2010). However, SS and GHRH rhythms in fish are not well understood since the majority of research has focused on mammals. Circadian variation of SS levels in rat plasma showed more elevation during scotophase than

during photophase (Peinado et al. 1990; Ishikawa et al. 1997). We investigated biological rhythms of growth-related genes in the diencephalon of the tiger puffer. The expression patterns of *ss1* mRNA were similar to those shown in previous studies. The *ss1* mRNA expression in the diencephalon of tiger puffers increased during the dark phase in 12L:12D conditions (Fig. 4). However, *ss1* mRNA expression rhythm disappeared under 24L conditions. Therefore, *ss1*mRNA suggest to have the daily rhythm according to light and dark.

In our presents, *ghrh1* and *ghrh2* mRNA exhibited diurnal rhythms in tiger puffers (Figs. 5 and 6). In rats, *ghrh* mRNA expression also exhibited diurnal rhythms (Bredow et al. 1996). Peak expression of hypothalamic *ghrh* mRNA occurred during the early part of photophase in rats. The *ghrh* expression gradually decreased up to scotophase, and the mRNA expressions maintained low levels during scotophase. Diurnal rhythms of hypothalamic *ghrh* mRNA were also observed in rats (Gardi et al. 1999). In these



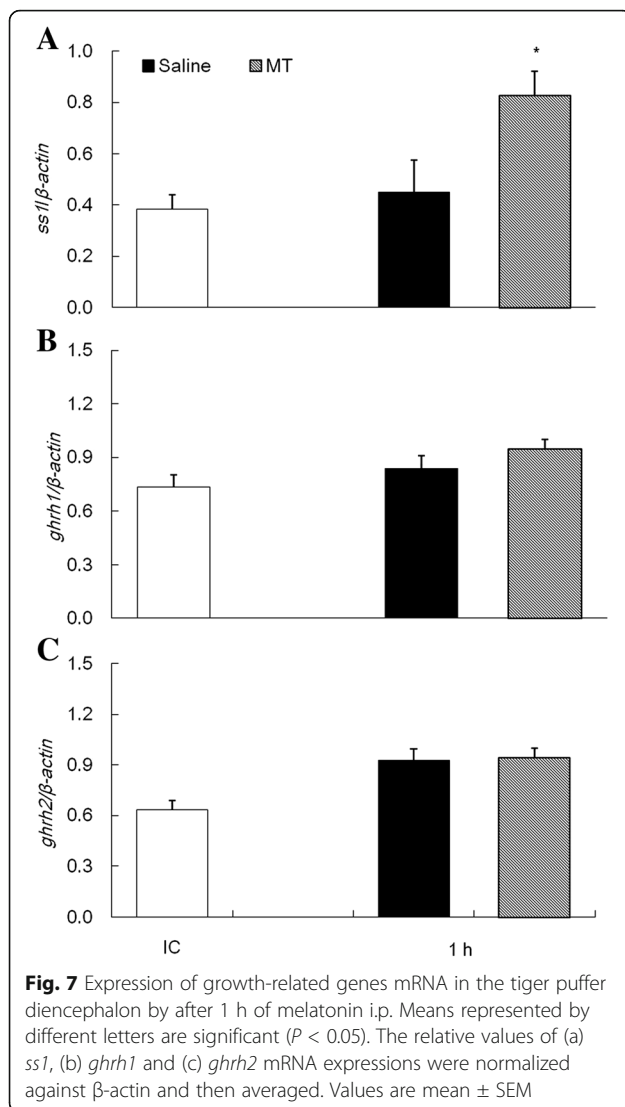


studies, hypothalamic *ghrh* levels increased rapidly in the first hour after light onset, then decreased for 4 h after light onset. The *ghrh* level gradually increased up to the beginning of scotophase and then steadily decreased during scotophase. The *ghrh1* and *ghrh2* mRNA rhythms in tiger puffers in this study were similar to the *ghrh* mRNA rhythms in rats. The expression of *ghrh1* mRNA in tiger puffers was high in the early part of photophase and then decreased toward the midpoint of photophase. Further, the *ghrh1* mRNA increased from the midpoint up to the end of photophase. During scotophase, *ghrh1* mRNA showed prolonged low expression levels. Therefore, we suggest that tiger puffers have daily rhythms of *ghrh* expression that vary with light and dark conditions.

Our results showed that the *ss1* mRNA expression pattern was similar to the pattern of melatonin secretion, but *ghrh1* and *ghrh2* mRNA expression patterns were opposite to those of melatonin secretion. We then examined the correlation of melatonin secretion and growth-related gene

expressions in tiger puffers. In our experiment, *ss1* mRNA in diencephalon of tiger puffer was showed inducing expression by melatonin i.p (Fig. 7a). But, no effect of melatonin on mRNA expressions of *ghrh1* and *ghrh2* was detected (Fig. 7b, c). This suggests that the daily fluctuation of *ss1* gene in the tiger puffer is controlled by melatonin, but not *ghrh* gene. Few studies have addressed the correlation of melatonin with SS or GHRH in vertebrates, including mammals. Our review of the literature found studies only on the relationship of melatonin to SS in the rat hippocampus (Izquierdo-Claros et al. 2004). This study showed a reduction in SS levels through decreasing somatostatinergic system activity, including inhibition of SS receptor activity by melatonin in the hippocampus. Although this finding seems to conflict with our results, we suggest that daily and circadian rhythms of growth-related genes are directly or indirectly controlled by melatonin in the tiger puffer.

Briefly, our results suggest that melatonin secretion and growth-related gene expressions follow daily and circadian rhythms in the tiger puffer. As a result, melatonin showed



that nocturnal rhythm in 12L:12D condition and this rhythm was similarly showed in 24L condition compared with 12L:12D condition. Through these results, melatonin is suggested to have the circadian rhythm regardless of the day and night. The *ss1* expression appears to be induction by melatonin treatment. However, *ss1* expression rhythm showed different expression rhythm when compared with melatonin rhythm under 24L condition. Therefore, *ss1* mRNA suggest that directly or indirectly regulated by melatonin. The correlation between *ghrh* expression rhythms with melatonin was not confirmed. Therefore, we more need to further investigate the clarity of the mechanisms between melatonin and growth-related genes.

#### Abbreviations

AANAT: Arylalkylamine *N*-acetyltransferase; GH: Growth hormone; GHRH: Growth hormone-releasing hormone; LD: Light and dark; LL: Constant light; SS: Somatostatin

#### Acknowledgements

This research was supported by the Basic Science Research Program through the National Research Foundation of Korea (NRF) funded by the Ministry of Education, Science, and Technology (2012R1A6A3A04041089).

#### Funding

This research was supported by the Basic Science Research Program through the National Research Foundation of Korea (NRF).

#### Availability of data and materials

Not applicable.

#### Authors' contributions

BH and SP designed and carried out the data analysis and manuscript writing. SW participated in the fish sampling and data analysis. YT and AT participated in the plasma melatonin data analysis. YD participated in its design and coordination and helped to draft the manuscript. All authors read and approved the final manuscript.

#### Ethics approval

All experiments were conducted in compliance with both the Animal Care and Use Committee guidelines of the Jeju National University.

#### Consent for publication

Not applicable.

#### Competing interests

The authors declare that they have no competing interests.

#### Publisher's Note

Springer Nature remains neutral with regard to jurisdictional claims in published maps and institutional affiliations.

#### Author details

<sup>1</sup>Marine Science Institute, Jeju National University, Jeju 6333, South Korea. <sup>2</sup>Aquafeed Research Center, National Institute of Fisheries Science (NIFS), Pohang 37517, South Korea. <sup>3</sup>Department of Electrical Engineering and Bioscience, School of Advanced Science and Engineering, Waseda University, Shinjuku, Tokyo 162-8480, Japan. <sup>4</sup>Department of Chemistry, Biology and Marine Sciences, Faculty of Science, University of the Ryukyus, Nishihara, Okinawa 903-0213, Japan. <sup>5</sup>Jeju International Marine Science Research & Logistics Center, Korea Institute of Ocean Science & Technology, Jeju 63349, South Korea. <sup>6</sup>19-5, Hamdeok 5(o)-gill, Jocheon, Jeju Special Self-Governing Province 695-965, Republic of South Korea.

Received: 12 February 2017 Accepted: 20 July 2017

Published online: 08 August 2017

#### References

- 1. Ayson FG, Takemura A. Daily expression patterns for mRNAs of GH, PRL, SL, IGF-I and IGF-II in juvenile rabbitfish, *Siganus guttatus*, during 24-h light and dark cycles. *Gen Comp Endocrinol.* 2006;149:261–8.
- 2. Bayarri MJ, Munoz-Cueto JA, López-Olmeda JF, Vera LM, De Lama MR, Madrid JA, Sanchez-Vazquez FJ. Daily locomotor activity and melatonin rhythms in Senegal sole (*Solea senegalensis*). *Physiol Behav.* 2004;81:577–83.
- 3. Bégay V, Falcón J, Cahill GM, Klein DC, Coon SL. Transcripts encoding two melatonin synthesis enzymes in the Teleost pineal organ: circadian regulation in pike and Zebrafish, but not in trout 1. *Endocrinology.* 1998;139:905–12.
- 4. Bertherat J, Bluet-Pajot MT, Epelbaum J. Neuroendocrine regulation of growth hormone. *Eur J Endocrinol.* 1995;132:12–24.
- 5. Biswas AK, Seoka M, Ueno K, Yong AS, Biswas BK, Kim YS, Taki K, Kumai H. Growth performance and physiological responses in striped knifejaw, *Oplegnathus fasciatus*, held under different photoperiods. *Aquaculture.* 2008;279:42–6.
- 6. Bredow S, Taishi P, Obél F Jr, Guha-Thakurta N, Krueger JM. Hypothalamic growth hormone-releasing hormone mRNA varies across the day in rats. *Neuroreport.* 1996;7:2501–6.
- 7. Canosa LF, Chang JP, Peter RE. Neuroendocrine control of growth hormone in fish. *Gen Comp Endocrinol.* 2007;151:1–26.

- De Pedro N, Martínez-Álvarez RM, Delgado M. Melatonin reduces body weight in goldfish (*Carassius auratus*): effects on metabolic resources and some feeding regulators. *J Pineal Res.* 2008;45:32–9.
- Forward RB, Tankersley RA, Reinsel KA. Selective tidal stream transport of spot (*Leiostomus xanthurus* Lacepede) and pinfish [*Lagodon rhomboides* (Linnaeus)] larvae: contribution of circatidal rhythms in activity. *J Exp Mar Biol Ecol.* 1998;226:19–32.
- Fraser NH, Metcalfe NB, Thorpe JE. Temperature-dependent switch between diurnal and nocturnal foraging in salmon. *Proc Royal Soc Lon B.* 1993;252:135–9.
- Fuentes EN, Valdés JA, Molina A, Björnsson BT. Regulation of skeletal muscle growth in fish by the growth hormone-insulin-like growth factor system. *Gen Comp Endocrinol.* 2013;192:136–48.
- Gardi J, Obal F, Fang J, Zhang J, Krueger JM. Diurnal variations and sleep deprivation-induced changes in rat hypothalamic GHRH and somatostatin contents. *Am J Phys.* 1999;277:R1339–44.
- Guerra-Santos B, López-Olmeda JF, de Mattos BO, Baião AB, Pereira DSP, Sánchez-Vázquez FJ, Cerqueira RB, Albinati RCBA, Fortes-Silva R. Synchronization to light and mealtime of daily rhythms of locomotor activity, plasma glucose and digestive enzymes in the Nile tilapia (*Oreochromis niloticus*). *Comp Biochem Physiol A Mol Integr Physiol.* 2017;204:40–7.
- Gunnarsson S, Imsland AK, Siikavuopio SI, Arnason J, Gústavsson A, Thorarensen H. Enhanced growth of farmed Arctic charr (*Salvelinus alpinus*) following a short-day photoperiod. *Aquaculture.* 2012;350:75–81.
- Herrero MJ, Martínez FJ, Miguez JM, Madrid JA. Response of plasma and gastrointestinal melatonin, plasma cortisol and activity rhythms of European sea bass (*Dicentrarchus labrax*) to dietary supplementation with tryptophan and melatonin. *J Comp Physiol B.* 2007;177:319–26.
- Hur SP, Takeuchi Y, Esaka Y, Nina W, Park YJ, Kang HC, Jeong HB, Lee YD, Kim SJ, Takemura A. Diurnal expression patterns of neurohypophysial hormone genes in the brain of the threespot wrasse *Halichoeres trimaculatus*. *Comp Biochem Physiol A Mol Integr Physiol.* 2011;158:490–7.
- Iigo M, Furukawa K, Hattori A, Ohtani-Kaneko R, Hara M, Suzuki T, Tabata M, Aida K. Ocular melatonin rhythms in the goldfish, *Carassius auratus*. *J Biol Rhythm.* 1997;12:182–92.
- Ishikawa M, Mizobuchi M, Takahashi H, Bando H, Saito S. Somatostatin release as measured by in vivo microdialysis: circadian variation and effect of prolonged food deprivation. *Brain Res.* 1997;749:226–31.
- Izquierdo-Claros RM, MDC BLO-A, Arilla-Ferreiro E. Acutely administered melatonin decreases somatostatin-binding sites and the inhibitory effect of somatostatin on adenylyl cyclase activity in the rat hippocampus. *J Pineal Res.* 2004;36:87–94.
- Klein SE, Sheridan MA. Somatostatin signaling and the regulation of growth and metabolism in fish. *Mol Cell Endocrinol.* 2008;286:148–54.
- Lee LT, Siu FK, Tam JK, Lau IT, Wong AO, Lin MC, Vaudry H, Chow BK. Discovery of growth hormone-releasing hormones and receptors in nonmammalian vertebrates. *Proc Natl Acad Sci.* 2007;104:2133–8.
- Luque RM, Park S, Kineman RD. Role of endogenous somatostatin in regulating GH output under basal conditions and in response to metabolic extremes. *Mol Cell Endocrinol.* 2008;286:155–68.
- Maitra SK, Chatteraj A, Mukherjee S, Moniruzzaman M. Melatonin: a potent candidate in the regulation of fish oocyte growth and maturation. *Gen Comp Endocrinol.* 2013;181:215–22.
- McLean E, Devlin RH, Byatt JC, Clarke WC, Donaldson EM. Impact of a controlled release formulation of recombinant bovine growth hormone upon growth and seawater adaptation in coho (*Oncorhynchus kisutch*) and chinook (*Oncorhynchus tshawytscha*) salmon. *Aquaculture.* 1997;156:113–28.
- Moore AF, Menaker M. The effect of light on melatonin secretion in the cultured pineal glands of Anolis lizards. *Comp Biochem Physiol A Mol Integr Physiol.* 2011;160:301–8.
- Nikaído Y, Ueda S, Takemura A. Photocircadian regulation of melatonin production in the Mozambique tilapia *Oreochromis mossambicus*. *Comp Biochem Physiol A Mol Integr Physiol.* 2009;152:77–82.
- Norberg B, Weltzien FA, Karlén Ø, Holm JC. Effects of photoperiod on sexual maturation and somatic growth in male Atlantic halibut (*Hippoglossus hippoglossus* L.). *Comp Biochem Physiol B Biochem Mol Biol.* 2001;129:357–65.
- Oliveira C, Garcia EM, López-Olmeda JF, Sánchez-Vázquez FJ. Daily and circadian melatonin release in vitro by the pineal organ of two nocturnal teleost species: Senegal sole (*Solea senegalensis*) and tench (*Tinca tinca*). *Comp Biochem Physiol A Mol Integr Physiol.* 2009;153:297–302.
- Peinado MA, Fajardo N, Hernandez G, Puig-Domingo M, Viader M, Reiter RJ, Webb SM. Immunoreactive somatostatin diurnal rhythms in rat pineal, retina and hardierian gland: effects of sex, season, continuous darkness and estrous cycle. *J Neural Transm.* 1990;81:63–72.
- Qian Y, Yan A, Lin H, Li W. Molecular characterization of the GHRH/GHRH-R and its effect on GH synthesis and release in orange-spotted grouper (*Epinephelus coioides*). *Comp Biochem Physiol B Biochem Mol Biol.* 2012;163:229–37.
- Raven PA, Sakhrani D, Beckman B, Neregård L, Sundström LF, Björnsson BT, Devlin RH. Growth and endocrine effects of recombinant bovine growth hormone treatment in non-transgenic and growth hormone transgenic coho salmon. *Gen Comp Endocrinol.* 2012;177:143–52.
- Revel FG, Saboureau M, Masson-Pévet M, Pévet P, Mikkelsen JD, Simonneaux V. Kisspeptin mediates the photoperiodic control of reproduction in hamsters. *Curr Biol.* 2006;16:1730–5.
- Sheridan MA, Hagemester AL. Somatostatin and somatostatin receptors in fish growth. *Gen Comp Endocrinol.* 2010;167:360–5.
- Takemura A, Susilo ES, Rahman MD, Morita M. Perception and possible utilization of moonlight intensity for reproductive activities in a lunar-synchronized spawner, the golden rabbitfish. *J Exp Zool A Comp Exp Biol.* 2004;301:844–51.
- Taylor JF, Migaud H, Porter MJR, Bromage NR. Photoperiod influences growth rate and plasma insulin-like growth factor-I levels in juvenile rainbow trout, *Oncorhynchus mykiss*. *Gen Comp Endocrinol.* 2005;142:169–85.
- Very NM, Knutson D, Kittilson JD, Sheridan MA. Somatostatin inhibits growth of rainbow trout. *J Fish Biol.* 2001;59:157–65.
- Wan X, Zhang X, Huo Y, Wang G. Weather entrainment and multispectral diel activity rhythm of desert hamsters. *Behav Process.* 2013;99:62–6.
- Wood AW, Duan C, Bern HA. Insulin-like growth factor signaling in fish. *Int Rev Cytol.* 2005;243:215–85.
- Xing Y, Wensheng L, Haoran L. Polygenic expression of somatostatin in orange-spotted grouper (*Epinephelus coioides*): molecular cloning and distribution of the mRNAs encoding three somatostatin precursors. *Mol Cell Endocrinol.* 2005;241:62–72.

Submit your next manuscript to BioMed Central and we will help you at every step:

- We accept pre-submission inquiries
- Our selector tool helps you to find the most relevant journal
- We provide round the clock customer support
- Convenient online submission
- Thorough peer review
- Inclusion in PubMed and all major indexing services
- Maximum visibility for your research

Submit your manuscript at  
www.biomedcentral.com/submit

