



The Prognostic Value of the Charlson's Comorbidity Index in Patients with Prolonged Acute Mechanical Ventilation: A Single Center Experience

Seung Eon Song, M.D.¹, Sang Hee Lee, M.D.², Eun-Jung Jo, M.D.¹, Jung Seop Eom, M.D.¹, Jeong Ha Mok, M.D.¹, Mi-Hyun Kim, M.D.¹, Ki Uk Kim, M.D.¹, Min Ki Lee, M.D.¹ and Kwangha Lee, M.D.¹

¹Division of Pulmonary, Allergy and Critical Care Medicine, Department of Internal Medicine, Pusan National University School of Medicine, Busan, ²Division of Pulmonology, Department of Internal Medicine, Wonkwang University Sanbon Hospital, Gunpo, Korea

Background: The aim of our study was to evaluate the prognostic value of Charlson's weighted index of comorbidities (WIC) in patients with prolonged acute mechanical ventilation (PAMV, ventilator care ≥ 96 hours).

Methods: We retrospectively enrolled 299 Korean PAMV patients who were admitted in a medical intensive care unit (ICU) of a university-affiliated tertiary care hospital between 2008 and 2013. Survivors were defined as patients who survived for 60 days after ICU admission.

Results: The patients' mean age was 65.1 ± 14.1 years and 70.6% were male. The mean ICU and hospital length of stay was 21.9 ± 19.7 and 39.4 ± 39.1 days, respectively. In addition, the 60-day mortality rate after ICU admission was 35.5%. The mean WIC was 2.3 ± 1.8 , with significant differences between nonsurvivors and survivors (2.7 ± 2.1 vs. 2.1 ± 1.7 , $p < 0.05$). The area under the curve of receiver-operating-characteristics curve for WIC was 0.593 (95% confidence interval [CI], 0.523–0.661; $p < 0.05$). Based on Kaplan-Meier curves of 60-day survival, WIC ≥ 5 had statistically lower survival than WIC < 5 (log-rank test, $p < 0.05$). In a multivariate Cox proportional hazard model, WIC ≥ 5 was associated with poor prognosis (hazard ratio, 1.901; 95% CI, 1.140–3.171; $p < 0.05$). The mortality rate of patients with WIC ≥ 5 was 54.2%.

Conclusion: Our study showed a WIC score ≥ 5 might be helpful in predicting 60-day mortality in PAMV patients.

Keywords: Intensive Care Units; Comorbidity; Respiration, Artificial; Prognosis

Address for correspondence: Kwangha Lee, M.D., Ph.D.

Division of Pulmonary, Allergy and Critical Care Medicine, Department of Internal Medicine, Pusan National University School of Medicine, 179 Gudeok-ro, Seo-gu, Busan 49241, Korea

Phone: 82-51-240-7743, Fax: 82-52-245-3127

E-mail: jubilate@pusan.ac.kr

Received: Dec. 14, 2015

Revised: Feb. 4, 2016

Accepted: Aug. 10, 2016

© It is identical to the Creative Commons Attribution Non-Commercial License (<http://creativecommons.org/licenses/by-nc/4.0/>).



Copyright © 2016
The Korean Academy of Tuberculosis and Respiratory Diseases.
All rights reserved.

Introduction

Among the patients admitted to intensive care units (ICUs), those requiring ventilator care consume high amounts of medical resources and incur much expense^{1,2}. Several studies have suggested that an important factor contributing to the high cost of health care may be associated with the clinician decision-making at the patient's bedside³⁻⁶. Accordingly, the length of stay of a patient in the ICU would be expected to be longer, and it may be helpful for critical-care physicians to determine at an early stage if these patients would really benefit from ICU care.

Recently, some reports described a novel subpopulation of patients on mechanical ventilation (MV): those who require

MV for ≥ 96 hour, referred to as “prolonged acute mechanical ventilation” (PAMV) cases^{2,7-9}. These studies reported that PAMV patients constituted one-third of all hospitalized patients undergoing MV and consumed two thirds of the medical resources of all MV patients^{2,7-9}. Also, these patients are projected to increase in the years to come^{7,8}. Thus, further research needs to focus on more accurately characterizing the clinical outcomes and prognostic factors for such patients.

When critical care physicians discuss and guide the goal of care and prognosis of PAMV patients, a mortality prediction model would be necessary to address prognostic uncertainty. Although clinical parameters on their clinical course would be associated with clinical outcomes, the concurrent comorbidities before admission should be considered. In the existing literature, Charlson’s weighted index of comorbidities (WIC) has been suggested to have a predictive value¹⁰ and has also been shown to predict hospital mortality in critically ill patients¹⁰⁻¹⁴. In existing literature, there were some reports about the validity and utility of Charlson’s WIC in relation to other illness scores (such as Acute Physiology and Chronic Health Evaluation [APACHE] II and Sequential Organ Failure Assessment [SOFA] scores) in predicting the outcome of critically ill patients¹¹⁻¹⁶. Based on previous reports, we hypothesized the role of this index as a prognostic model for PAMV population.

This study sought to investigate the prognostic value of Charlson’s WIC in predicting 60-day mortality after MV in patients defined as PAMV cases in a medical ICU of a university-affiliated tertiary care center in South Korea.

Materials and Methods

1. Study design

This retrospective study was conducted in Pusan National University Hospital, Republic of Korea, a university-affiliated tertiary care hospital with a 12-bed medical ICU with full cardiovascular and close airway monitoring as well as a separate seven-bed adult coronary care unit. The physician staff in the medical ICU consisted of one full-time specialist, one clinical fellow in pulmonary and critical care medicine, two resident physicians, and one intern. Fellows and resident physicians provided overnight care, and the nurse-to-bed ratio was 1:3. Full-time physical and respiratory rehabilitation therapies were available for all patients. Consultation services were accessible for all the subspecialists in the hospital. All patients were managed according to therapeutic recommendations based on early goal-directed therapy and a lung-protective ventilator strategy^{17,18}.

2. Study subjects

Patients defined as PAMV cases within the period from

March 1, 2008, to February 28, 2013 were included in this study. The PAMV patients were those who had undergone MV for longer than 4 days in the ICU², regardless of tracheostomy. The exclusion criteria included patients younger than 18 years who received ventilator care prior to ICU admission. The medical records and laboratory and radiological findings of all the patients were reviewed. The investigators completed a case report form, and data were collected from March to June 2014. The three investigators (S.E.S., S.H.L., and K.L.) confirmed that the study objectives and procedures were honestly disclosed, and all had full access to all the study data. This study was conducted with approval from the Institutional Review Board of Pusan National University Hospital (E-2015127). This study had no impact on the patient treatment.

3. Data collection

The following data were gathered from the medical records of each patient: age, gender, body mass index, presence of shock on the ICU admission day, duration of MV, and length of stay in the ICU and hospital. The ICU and in-hospital mortality for all the patients were recorded. The APACHE II and SOFA scores were calculated to quantify the severity of the illness and the degree of organ dysfunction, respectively, using the data from the first 24 hours of ICU admission^{15,16}. Charlson’s WIC, acquired from the medical records of all the patients’ comorbidities before the catastrophic illness requiring ICU care, was calculated to predict the effect of the underlying diseases on the patient outcomes¹⁰. The major diagnoses leading to MV were also collected. We also evaluated the do-not-resuscitate (DNR) status records of the patients within 4 days after ICU admission. The survivors were defined as patients who had survived for 60 days after ICU admission.

4. Statistical analysis

The continuous variables were expressed as median values with the range or mean \pm standard deviation, and the categorical variables were expressed as numbers (percentages). Student’s t test and Mann-Whitney U test were used to compare the continuous variables, and the chi-square and Fisher exact tests (for small numbers) were used to compare the categorical variables. To evaluate the relationship between WIC and the other clinical variables, the Pearson’s correlation coefficient (γ) was calculated. Receiver operating characteristic (ROC) curves and the area under the curve (AUC) were used. Univariate Cox proportional hazard models were developed to determine the relationship between WIC and mortality. Variables with $p < 0.05$ were included in the multivariate Cox proportional hazard model. Survival curves were prepared using the Kaplan-Meier method with the log-rank test. All the statistical analyses were performed using the Statistical Package for the Social Sciences (version 19.0, IBM Corp., Armonk,

NY, USA) program. A two-tailed p-value <0.05 was considered to indicate a significant difference.

Results

A total of 754 patients who had been admitted to the medical ICU and to whom MV was applied during the study period were identified. Among them, 311 patients (41.2%) met the definition of PAMV. Among these patients, 12 patients (3.9%) had DNR order given before day 4 of MV. We appropriately

excluded them because this would be effective modified of prognosis. For the total enrolled patients (n=299), the ICU and in-hospital mortality rates were 41.5 and 42.1%, respectively. In addition, the 60-day mortality rate after ICU admission was 35.5%. Table 1 shows the results of the baseline characteristics of all enrolled patients, and the results of the comparisons between the survivors and the nonsurvivors.

The enrolled patients had an average WIC of 2.3±1.8 and a median WIC of 2 (range, 0–11). The number of patients for each WIC level and the corresponding mortality are shown in Figure 1. Results of the investigation of all the components of

Table 1. Comparison of baseline characteristics between survivors and nonsurvivors

Characteristic	Total (n=299)	Survivor (n=193)	Nonsurvivor (n=106)	p-value
Age, yr	65.1±14.1	64.0±14.1	67.2±14.1	0.058
Male	211 (70.6)	133 (68.9)	78 (73.6)	0.428
Body mass index, kg/m ²	21.7±4.0	21.9±3.6	21.3±4.6	0.219
ICU LOS, day	21.9±19.7	24.7±22.8	16.9±10.6	<0.001
Hospital LOS, day	39.4±39.1	49.0±44.9	22.0±14.0	<0.001
APACHE II score on admission day	17.1±6.0	16.5±5.9	18.1±6.1	0.028
SOFA score on admission day	4.9±2.5	4.9±2.5	5.0±2.7	0.921
Total MV days	17.9±19.5	19.2±22.9	15.6±10.4	0.130
Shock on admission day	223 (74.6)	138 (71.5)	85 (80.2)	0.126
Major diagnosis leading to MV				
Pneumonia without ARDS	148 (49.5)	97 (50.2)	51 (48.1)	0.809
Pneumonia with ARDS	59 (19.7)	16 (8.3)	43 (40.6)	<0.001
Cardiogenic pulmonary edema	55 (18.4)	48 (24.9)	7 (6.6)	<0.001
Aspiration	20 (6.7)	17 (8.8)	3 (2.8)	0.054
AE of chronic lung diseases*	17 (5.7)	15 (7.8)	2 (1.9)	0.038

Values are presented as mean±standard deviation or number (%).

*Chronic lung diseases: chronic obstructive pulmonary disease, asthma, and bronchiectasis.

ICU LOS: intensive care unit length of stay; APACHE: Acute Physiology and Chronic Health Evaluation; SOFA: Sequential Organ Failure Assessment; MV: mechanical ventilation; ARDS: acute respiratory distress syndrome; AE: acute exacerbation.

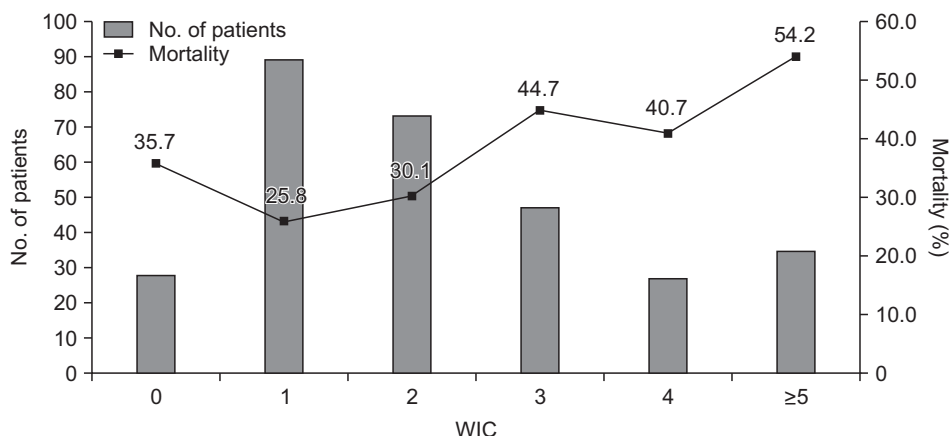


Figure 1. The number of patients for each Charlson's weighted index of comorbidities (WIC) score (left Y axis) and the corresponding mortality (right Y axis).

Table 2. Comparison of the components of Charlson’s weighted index of comorbidities between survivors and nonsurvivors

Assigned weight for underlying disorder	Underlying disorder	Total (n=299)	Survivor (n=193)	Nonsurvivor (n=106)	p-value
1	Myocardial infarction	16 (5.4)	5 (2.6)	11 (10.4)	0.006
	Congestive heart failure	54 (18.1)	35 (18.1)	19 (17.9)	>0.999
	Peripheral vascular disease	5 (1.7)	5 (2.6)	0 (0)	0.165
	Cerebrovascular disease	70 (23.4)	49 (25.4)	21 (19.8)	0.319
	Dementia	9 (3.0)	6 (3.1)	3 (2.8)	>0.999
	Chronic pulmonary disease	124 (41.5)	75 (38.9)	49 (46.2)	0.223
	Connective tissue disease	19 (6.4)	16 (8.3)	3 (2.8)	0.082
	Ulcer disease	22 (7.4)	15 (7.8)	7 (6.6)	0.819
	Mild liver disease	23 (7.7)	16 (8.3)	7 (6.6)	0.658
	Diabetes	69 (23.1)	45 (23.3)	24 (22.6)	>0.999
2	Hemiplegia	16 (5.4)	13 (6.7)	3 (2.8)	0.186
	Moderate and severe renal disease	39 (13.0)	19 (9.8)	20 (18.9)	0.032
	Diabetes with end-organ damage	15 (5.0)	9 (4.7)	6 (5.7)	0.784
	Any tumor	37 (12.4)	15 (7.8)	22 (20.8)	0.002
	Leukemia	1 (0.3)	1 (0.5)	0 (0.0)	>0.999
	Lymphoma	1 (0.3)	1 (0.5)	0 (0.0)	>0.999
3	Moderate and severe liver disease	11 (3.7)	4 (2.1)	7 (6.6)	0.058
6	Metastatic tumor	6 (2.0)	3 (1.6)	3 (2.8)	0.670
	Acquired immune deficiency syndrome	0 (0)	0 (0)	0 (0)	Not applicable

Value are presented as number (%).

WIC and their matching patients are shown in Table 2. Table 2 also shows the comparisons between survivors and nonsurvivors according to the components of WIC.

When the relationship between WIC and the clinical variables upon admission were analyzed, it was found that the WIC score was positively correlated with the APACHE II ($\gamma=0.321, p<0.001$) and SOFA ($\gamma=0.224, p<0.001$) scores on admission day, respectively.

When the WIC scores of the nonsurvivors and survivors were compared, it was found that the nonsurvivors had significantly higher WIC scores than the survivors (2.7 ± 2.1 vs. $2.1\pm 1.7, p=0.008$). The AUC of the ROC curve for WIC in our cohort was 0.592 (95% confidence interval, 0.523–0.661; $p=0.008$). Kaplan-Meier curves of 60-day survival are shown in Figure 2. Survival curves showed WIC ≥ 5 had statistically significant differences than other WIC scores (log-rank test, $p=0.027$). In a univariate Cox proportional hazard model, four clinical factors were associated with poor prognosis ($p<0.05$): WIC more than or equal to 5; presence of shock on ICU admission day; acute respiratory distress syndrome (ARDS) on ICU admission day; and APACHE II score of more than or equal to 17 (the cut-off level was determined by ROC curves).

After adjusting for age and sex, these factors were included in a multivariate model: 3 factors (WIC ≥ 5 , ARDS on ICU ad-

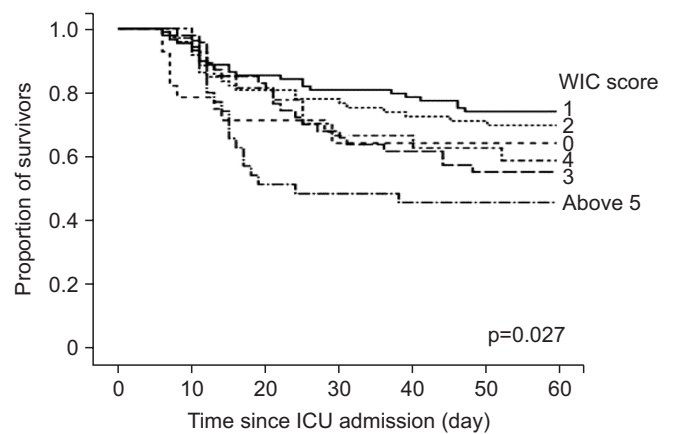


Figure 2. Kaplan-Meier survival curves of 60-day mortality according to the number of Charlson’ weighted index of comorbidities (WIC). ICU: intensive care unit.

mission day, and APACHE II ≥ 17) were independently associated with the 60-day mortality (Table 3). The mortality rate of patients with WIC ≥ 5 was 54.2%.

Table 3. Multivariate analysis of factors associated with 60-day mortality

Factor	Multivariate analysis	
	HR (95% CI)	p-value
Presence of shock on ICU admission day	1.199 (0.739–1.946)	0.462
ARDS on ICU admission day	4.527 (3.039–6.743)	<0.001
APACHE II \geq 17	1.601 (1.075–2.385)	0.021
WIC \geq 5	1.901 (1.140–3.171)	0.014

Statistical significance was tested by multivariate Cox hazards models.

HR: hazard ratio; CI: confidence interval; ICU: intensive care unit; ARDS: acute respiratory distress syndrome; APACHE: Acute Physiology and Chronic Health Evaluation; WIC: Charlson's weighted index of comorbidities.

Discussion

The previous studies have shown that comorbid conditions before admission appear to predict mortality in ICU patients, and as such, comorbidity indices should be used as an important tool for predicting patient outcomes^{11,19,21}. In the present study, the prognostic value of Charlson's WIC in PAMV patients was investigated. It was demonstrated that a WIC score of more than or equal 5 was associated with the increased 60-day mortality of our enrolled patients. Based on the present study results, a higher WIC score might be helpful in predicting the mortality of PAMV patients.

In this study, however, the AUC of the ROC curve for the WIC score was lower and the WIC score had weak correlation with the APACHE II and SOFA score. Moreover, as shown in Figure 2, we could not find the prognostic value in a WIC score less than 4 in predicting 60-day mortality. Also, we could not find how each component of WIC could affect their prognosis. Although our result suggests that WIC may be a useful indicator to assist physicians in decisions related to patient management and counseling with their families or surrogates, this index should not override clinical judgments. In addition, our study was a single center experience. Further research is needed to determine the influence of comorbidities on the prognosis of these patients.

Based on the previous reports^{2,7-9}, the incidence of PAMV cases seems likely to increase in the future, making it an emerging challenge for the critical-care delivery system. In the Asian ICUs (including those in South Korea), however, the critical-care resources and facilities of university hospitals are typically limited compared to those of the developed countries in North America and Europe^{22,23}. In addition, a shortage of critical-care personnel, including full-time intensivists, and a low nurse-to-patient ratio, exist, which are serious issues for clinical practice²⁴. Accordingly, a prediction model that identifies patients with poor or good risks for clinical course may be useful for informing the discussions among the clinicians and the patients' families (or surrogates). Although there were reported data about the prognostic factors for these patients²⁵, developing a new mortality model through a large-scale multi-

center study would be necessary for the South Korean patient population requiring PAMV.

This study had several limitations. First, it was conducted retrospectively, which may have resulted in an informational bias. Second, the study was an observational retrospective analysis, and our data represent the experience of a single center. Thus, the results of our study may not represent the general situation in Korea. Third, our study was a retrospective one, we could not know how to deal with some patients who were not already indicated in the ICU but could not be out of the ICU because there was no general ward vacancy or availability in other hospitals. Fourth, in our results, the mortality of patients with WIC=0 was higher than that of patients with WIC=1 or 2. Because our study was retrospective study, all patients' various comorbidities could be omitted in medical records, and all comorbidities could not gathered completely.

In conclusion, this study investigated the usefulness of Charlson's WIC as a prognostic indicator in PAMV patients. It was found that higher WIC scores than that of the survivors, and WIC \geq 5 might be helpful in predicting 60-day mortality. In terms of identifying a prognostic value of this score in PAMV, this population is set to increase so prospective, large-scale, multicenter studies with longer follow-up time periods are required to determine if this index can be considered a prognostic factor.

Conflicts of Interest

No potential conflict of interest relevant to this article was reported.

References

1. Halpern NA, Pastores SM. Critical care medicine in the United States 2000-2005: an analysis of bed numbers, occupancy rates, payer mix, and costs. *Crit Care Med* 2010;38:65-71.
2. Zilberberg MD, Luippold RS, Sulsky S, Shorr AF. Prolonged acute mechanical ventilation, hospital resource utiliza-

- tion, and mortality in the United States. *Crit Care Med* 2008;36:724-30.
3. Kale MS, Bishop TF, Federman AD, Keyhani S. "Top 5" lists top \$5 billion. *Arch Intern Med* 2011;171:1856-8.
 4. Berwick DM, Hackbarth AD. Eliminating waste in US health care. *JAMA* 2012;307:1513-6.
 5. Garland A, Shaman Z, Baron J, Connors AF Jr. Physician-attributable differences in intensive care unit costs: a single-center study. *Am J Respir Crit Care Med* 2006;174:1206-10.
 6. Campbell EG, Regan S, Gruen RL, Ferris TG, Rao SR, Cleary PD, et al. Professionalism in medicine: results of a national survey of physicians. *Ann Intern Med* 2007;147:795-802.
 7. Zilberberg MD, de Wit M, Pirone JR, Shorr AF. Growth in adult prolonged acute mechanical ventilation: implications for healthcare delivery. *Crit Care Med* 2008;36:1451-5.
 8. Zilberberg MD, Shorr AF. Prolonged acute mechanical ventilation and hospital bed utilization in 2020 in the United States: implications for budgets, plant and personnel planning. *BMC Health Serv Res* 2008;8:242.
 9. Zilberberg MD, Kramer AA, Higgins TL, Shorr AF. Prolonged acute mechanical ventilation: implications for hospital benchmarking. *Chest* 2009;135:1157-62.
 10. Charlson ME, Pompei P, Ales KL, MacKenzie CR. A new method of classifying prognostic comorbidity in longitudinal studies: development and validation. *J Chronic Dis* 1987;40:373-83.
 11. Norena M, Wong H, Thompson WD, Keenan SP, Dodek PM. Adjustment of intensive care unit outcomes for severity of illness and comorbidity scores. *J Crit Care* 2006;21:142-50.
 12. Quach S, Hennessy DA, Faris P, Fong A, Quan H, Doig C. A comparison between the APACHE II and Charlson Index Score for predicting hospital mortality in critically ill patients. *BMC Health Serv Res* 2009;9:129.
 13. Yang Y, Yang KS, Hsann YM, Lim V, Ong BC. The effect of comorbidity and age on hospital mortality and length of stay in patients with sepsis. *J Crit Care* 2010;25:398-405.
 14. Oltean S, Tatulescu D, Bondor C, Slavcovici A, Cismaru C, Lupse M, et al. Charlson's weighted index of comorbidities is useful in assessing the risk of death in septic patients. *J Crit Care* 2012;27:370-5.
 15. Knaus WA, Draper EA, Wagner DP, Zimmerman JE. APACHE II: a severity of disease classification system. *Crit Care Med* 1985;13:818-29.
 16. Vincent JL, Moreno R, Takala J, Willatts S, De Mendonca A, Bruining H, et al. The SOFA (Sepsis-related Organ Failure Assessment) score to describe organ dysfunction/failure. On behalf of the Working Group on Sepsis-Related Problems of the European Society of Intensive Care Medicine. *Intensive Care Med* 1996;22:707-10.
 17. Ventilation with lower tidal volumes as compared with traditional tidal volumes for acute lung injury and the acute respiratory distress syndrome. The Acute Respiratory Distress Syndrome Network. *N Engl J Med* 2000;342:1301-8.
 18. Dellinger RP, Levy MM, Rhodes A, Annane D, Gerlach H, Opal SM, et al. Surviving Sepsis Campaign: international guidelines for management of severe sepsis and septic shock, 2012. *Intensive Care Med* 2013;39:165-228.
 19. Poses RM, McClish DK, Smith WR, Bekes C, Scott WE. Prediction of survival of critically ill patients by admission comorbidity. *J Clin Epidemiol* 1996;49:743-7.
 20. Johnston JA, Wagner DP, Timmons S, Welsh D, Tsevat J, Render ML. Impact of different measures of comorbid disease on predicted mortality of intensive care unit patients. *Med Care* 2002;40:929-40.
 21. Ladha KS, Zhao K, Quraishi SA, Kurth T, Eikermann M, Kaafarani HM, et al. The Deyo-Charlson and Elixhauser-van Walraven Comorbidity Indices as predictors of mortality in critically ill patients. *BMJ Open* 2015;5:e008990.
 22. Kim JH, Hong SK, Kim KC, Lee MG, Lee KM, Jung SS, et al. Influence of full-time intensivist and the nurse-to-patient ratio on the implementation of severe sepsis bundles in Korean intensive care units. *J Crit Care* 2012;27:414.
 23. Phua J, Koh Y, Du B, Tang YQ, Divatia JV, Tan CC, et al. Management of severe sepsis in patients admitted to Asian intensive care units: prospective cohort study. *BMJ* 2011;342:d3245.
 24. Kwak SH, Jeong CW, Lee SH, Lee HJ, Koh Y. Current status of intensive care units registered as critical care subspecialty training hospitals in Korea. *J Korean Med Sci* 2014;29:431-7.
 25. Lee SH, Kim MJ, Jeong ES, Jo EJ, Eom JS, Mok JH, et al. Outcomes and prognostic factors in patients with prolonged acute mechanical ventilation: a single-center study in Korea. *J Crit Care* 2015;30:1016-20.