

# Subtype Distribution of *Blastocystis* in Communities along the Chao Phraya River, Thailand

Attakorn Palasuwan<sup>1</sup>, Duangdao Palasuwan<sup>1</sup>, Aongart Mahittikorn<sup>2</sup>, Rachatawan Chiabchalard<sup>2</sup>, Valery Combes<sup>3</sup>, Supaluk Popruk<sup>2,\*</sup>

<sup>1</sup>Department of Clinical Microscopy, Faculty of Allied Health Sciences, Chulalongkorn University, Bangkok, Thailand; <sup>2</sup>Department of Protozoology, Faculty of Tropical Medicine, Mahidol University, Bangkok 10400, Thailand; <sup>3</sup>Faculty of Sciences, School of Life Sciences, University of Technology, Sydney, Australia

**Abstract:** *Blastocystis* is a common zoonotic enteric protozoan that has been classified into 17 distinct subtypes (STs). A cross-sectional study was conducted to determine the prevalence and subtype distributions of *Blastocystis* in villagers living along the Chao Phraya River, Ayutthaya Province, Thailand, and to assess the risk of zoonotic infection. In total, 220 stool samples were collected, and DNA was extracted. PCR and sequencing were performed with primers targeting the small-subunit ribosomal RNA (SSU rRNA) genes. *Blastocystis* was present in 5.9% (13/220) of samples, and ST3 (5.0%; 11/220) was the predominant subtype, followed by ST2 (0.45%; 1/220) and ST6 (0.45%; 1/220). Phylogenetic trees were constructed with the maximum-likelihood method based on the Hasegawa–Kishino–Yano + G + I model, neighbor-joining, and maximum parsimony methods. The percentage of bootstrapped trees in which the associated taxa clustered together was relatively high. All the sequences of the *Blastocystis*-positive samples (KU051524–KU051536) were closely related to those from animals (pig, cattle, and chicken), indicating a zoonotic risk. Therefore, the villagers require proper health education, especially regarding the prevention of parasitic infection, to improve their personal hygiene and community health. Further studies are required to investigate the *Blastocystis* STs in the animals living in these villages.

**Key words:** *Blastocystis*, subtype, zoonotic risk, Chao Phraya River, Thailand

## INTRODUCTION

*Blastocystis* is an enteric zoonotic protozoan found in humans and many kinds of animals [1]. It is one of the most commonly detected protozoans in parasitological surveys, with high infection rates in developing countries [2]. Transmission can occur from humans to humans, humans to animals, and animals to humans via the fecal-oral route.

Several methods are used to diagnose *Blastocystis* infection, including direct examination, culture, and PCR. Among these, PCR is the most powerful, sensitive, and specific detection technique for *Blastocystis* and can be used for subtyping analyses [3]. At least 17 distinct subtypes (STs) of *Blastocystis* have been identified in humans, non-human primates, mammals, and avian hosts, based on the analysis of the small-

subunit ribosomal RNA (SSU rRNA) genes [4]. ST1–ST9 have been reported in humans, and ST1–ST4 are most common [5,6]. Some *Blastocystis* STs detected in humans have also been identified in animals. This suggests that animals can act as reservoirs for this protozoan and may be linked to its zoonotic transmission. Therefore, subtyping of this protozoan allows us to understand the interactions between humans and animals in specific communities.

The Chao Phraya River is one of the most important water sources in Thailand. Many communities and animal husbandry activities are located along this river. Importantly, it is the source of water for the people living along it, including those in Ayutthaya Province. It is possible that domestic animals, wildlife, and communities shed intestinal parasites into the river, readily spreading them to the environment, and thus distributing parasitic diseases among the communities.

Until now, limited data have been available on the prevalence and subtypes of *Blastocystis* in the communities living along the Chao Phraya River. Such data could be used to support and promote the health and quality of life of the humans and animals in the area, and to improve the interactions be-

•Received 14 March 2016, revised 19 May 2016, accepted 8 June 2016.

\*Corresponding author (supaluk.pop@mahidol.ac.th)

© 2016, Korean Society for Parasitology and Tropical Medicine

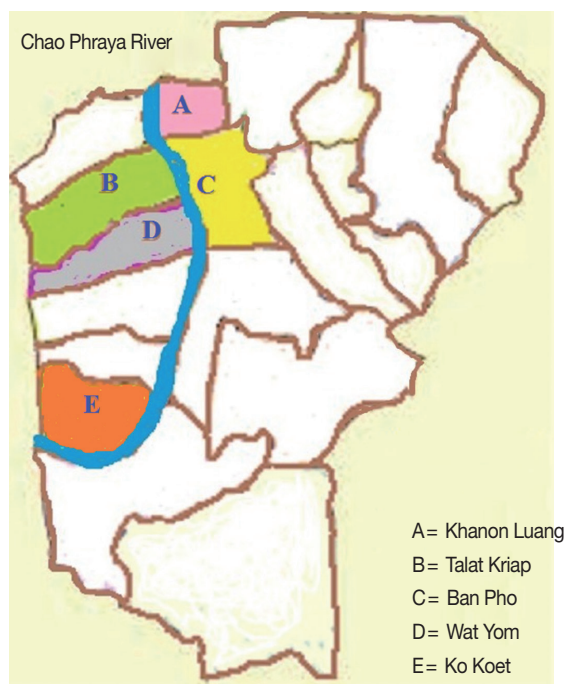
This is an Open Access article distributed under the terms of the Creative Commons Attribution Non-Commercial License (<http://creativecommons.org/licenses/by-nc/4.0>) which permits unrestricted non-commercial use, distribution, and reproduction in any medium, provided the original work is properly cited.

tween them. In this study, we investigated the prevalence and subtype distributions of *Blastocystis* among the villagers living along the Chao Phraya River.

## MATERIALS AND METHODS

### Collection of human stool samples

A cross-sectional study was conducted in September-October 2015 in 5 subdistricts (Khanon Luang, Talat Kriap, Ban Pho, Wat Yom, and Ko Koet) in the Bang Pa-In district of Ayutthaya Province, in central Thailand. These subdistricts are situated along the sides of the Chao Phraya River, and the villagers work in agriculture and live in close contact with animals, as shown in Fig. 1. Moreover, there has been some concern about the health of the villagers. In total, 220 human stool samples were collected. The participants ranged in age from 1 to 75 years. No participant complained of any gastrointestinal symptoms, such as abdominal pain or diarrhea. The specific instructions for collecting the stool samples and avoiding their contamination were clearly explained to all the participants. The stool samples were kept cool during transportation to the laboratory, and were then stored at -20°C until DNA extraction. The study protocol was approved by the Ethics Review Committee for Re-



**Fig. 1.** Map of the study areas. Bang Pa-In district, Ayutthaya Province, central Thailand.

search Involving Human Research Subjects, Health Sciences Group, Chulalongkorn University, Bangkok, Thailand (COA no. 152/2558).

### DNA extraction from stool samples and PCR amplification

DNA was extracted directly from all the fresh stool samples using the PSP® Spin Stool DNA Kit (STRATEC Molecular GmbH, Berlin, Germany), according to the manufacturer's instructions. DNA samples were stored at -20°C until analysis.

*Blastocystis* was detected, and the STs were characterized with a nested PCR analysis of the DNA from the collected stool samples. The primer sets and conditions used have been published previously and are specific for the partial SSU rRNA genes, which differentiate the subtypes of *Blastocystis*: external primer set, RD3 5'-GGGATCCTGATCCTTCCGCAGGTTACCT

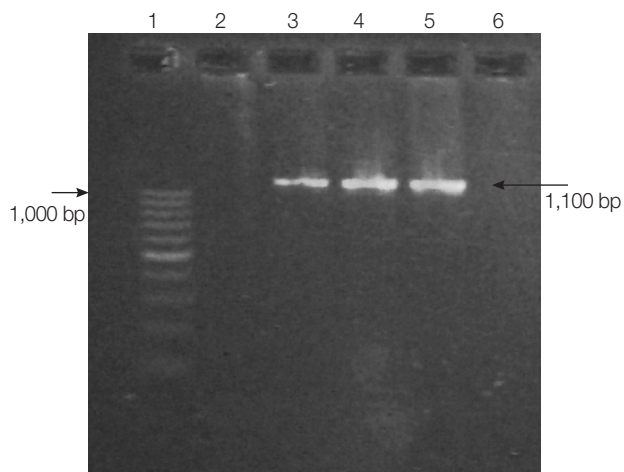
**Table 1.** Reference *Blastocystis* sequences used for the phylogenetic analysis in this study

Subtype	Host	Accession no.	Location
1	Pig	AB107961	Japan [21]
	Human	U51151	USA [22]
	Vervet monkey	AB107968	Japan [21]
2	Pig	EU445487	Philippines [23]
	Human	AB070987	Japan [24]
	Pig-tailed macaque	AB107969	Japan [21]
3	Human	AB070992	Japan [24]
	Baboon	HQ909890	Denmark [25]
	Cattle	AB107965	Japan [21]
4	Pig	AB107963	Japan [21]
	Rat	AB071000	Japan [24]
	Human	JN682513	Denmark [26]
5	Guinea pig	U51152	USA [22]
	Pig	AB107964	Japan [21]
	Cattle	AB107966	Japan [21]
6	Human	EF468654	China [27]
	Human	AB091237	Japan [24]
	Chicken	EU445485	Philippines [23]
7	Human	AF408427	Japan [24]
	Duck	AY135412	France [28]
8	Lemur	AB107970	Japan [21]
	Pheasant	AB107971	Japan [21]
9	Human	AF408426	Japan [14]
	Human	KC138681	Denmark [29]
10	Camel	KC148207	UK [4]
11	Elephant	GU256922	Australia [30]
12	Giraffe	GU256902	Australia [30]
13	Mouse deer	KC148209	UK [4]
14	Cattle	KC148205	UK [4]
15	Gibbon	KC148211	UK [4]
16	Red kangaroo	EU427514	Japan [31]
17	Gundi	KC148208	UK [4]

AC-3' and RD5 5'-GGAAGCTTATCTGTTGATCCTGCCAGTA-3'[7]; and internal primer set, forward 5'-GGAGGTAGTGACAA TAAATC-3' and reverse 5'-ACTAGGAATTCCTCGTTC ATG-3' [2]. PCR products were about 1,100 base pairs (bp) in length and were detected with 1.5% agarose gel electrophoresis. DNA in the gels was stained with ethidium bromide and visualized under a transilluminator.

#### DNA sequencing and phylogenetic reconstruction

All the positive samples were sequenced with an ABI 3730 XL sequencer, using fluorescent-dye terminator sequencing by Bio Basic Canada Inc. (Ontario, Canada). The positive sample sequences were read and edited with BioEdit (<http://www.mbio.ncsu.edu/bioedit/bioedit.html>). The *Blastocystis* STs of the positive samples were identified by comparing them with the 17 *Blastocystis* STs available in the GenBank database using the Basic Local Alignment Search Tool (BLAST; <http://blast.ncbi.nlm.nih.gov/Blast.cgi>) as shown in Table 1. A multiple sequence alignment was constructed with Clustal W [8]. Phylogenetic reconstructions were performed with MEGA 6.0 [9]. The phylogenetic trees were constructed with maximum-likelihood (ML) method based on the Hasegawa-Kishino-Yano + G (gamma distribution) + I (invariant) model (best-fit substitution model), and also neighbor-joining (NJ) and maximum parsimony (MP) methods. Bootstrap values were calculated with 1,000 replicates. *Proteromonas lacertae* (accession no. U37108), which is closely related to *Blastocystis*, was used as the outgroup.



**Fig. 2.** Gel electrophoresis of PCR amplification products. Lane 1, 100-bp DNA marker; lane 2, negative control; lane 3, positive control (*Blastocystis*); lanes 4-5, positive samples containing *Blastocystis*; lane 6, negative sample without *Blastocystis*.

#### Statistical analysis

A descriptive analysis of percentages was used to explore the positive stool samples and ST distributions of *Blastocystis*.

## RESULTS

#### Prevalence of *Blastocystis* determined with nested PCR

The overall prevalence of *Blastocystis* infection detected with nested PCR in this study was 5.9% (13/220). Fig. 2 shows positive PCR results for *Blastocystis*. PCR products were about 1,100 bp in length.

#### Subtype characterization of *Blastocystis* in positive stool samples

The *Blastocystis* STs were identified with direct DNA sequencing. BLAST results for positive samples were shown in Table 2. Only ST3, ST2, and ST6 were detected. ST3 (5.0%; 11/220) was the predominant subtype, followed by ST2 (0.45%; 1/220) and ST6 (0.45%; 1/220) as shown in Table 3. Table 4 shows the ST distributions of *Blastocystis* according to geographic subdistricts. The ages of the *Blastocystis*-infected individuals ranged from approximately 30 to 70 years, except for 2 infected children from Talat Kriap and Khanon Luang, whose ages were 1 year (ST6 infected) and 8 years (ST3 infected), respectively.

**Table 2.** BLAST results for positive samples in this study

Sample	% Identity	% Coverage	Accession no.
KU051524	99	98	AB107963 (ST3)
KU051525	98	97	AB107963 (ST3)
KU051526	99	97	GU992412 (ST2)
KU051527	99	98	AB107963 (ST3)
KU051528	99	97	EU445496 (ST3)
KU051529	99	98	AB107963 (ST3)
KU051530	99	97	AB107963 (ST3)
KU051531	99	99	AB107963 (ST3)
KU051532	99	98	AB107963 (ST3)
KU051533	99	96	AB091237 (ST6)
KU051534	99	98	AB107963 (ST3)
KU051535	99	96	AB107963 (ST3)
KU051536	99	97	AB107965 (ST3)

**Table 3.** Subtype distribution of *Blastocystis* in this study

Subtype	No. of positive samples (%)
2	1/220 (0.45)
3	11/220 (5.0)
6	1/220 (0.45)
Total	13/220 (5.9)

### Phylogenetic reconstruction and genetic divergence of *Blastocystis* isolates

The ML tree of *Blastocystis* constructed from SSU rRNA gene sequences is shown in Fig 3. The ML method was based on the Hasegawa-Kishino-Yano+G+I model. The percentage of bootstrapped trees in which the associated taxa clustered together was relatively high. The ML tree, upon which the SSU rRNA gene sequences of the *Blastocystis*-positive samples were compared with 17 reference sequences in the GenBank database, classified KU051524, KU051525, KU051527-KU051530, KU051532, and KU051534-KU051536 as ST3, KU051526 as ST2, and KU051533

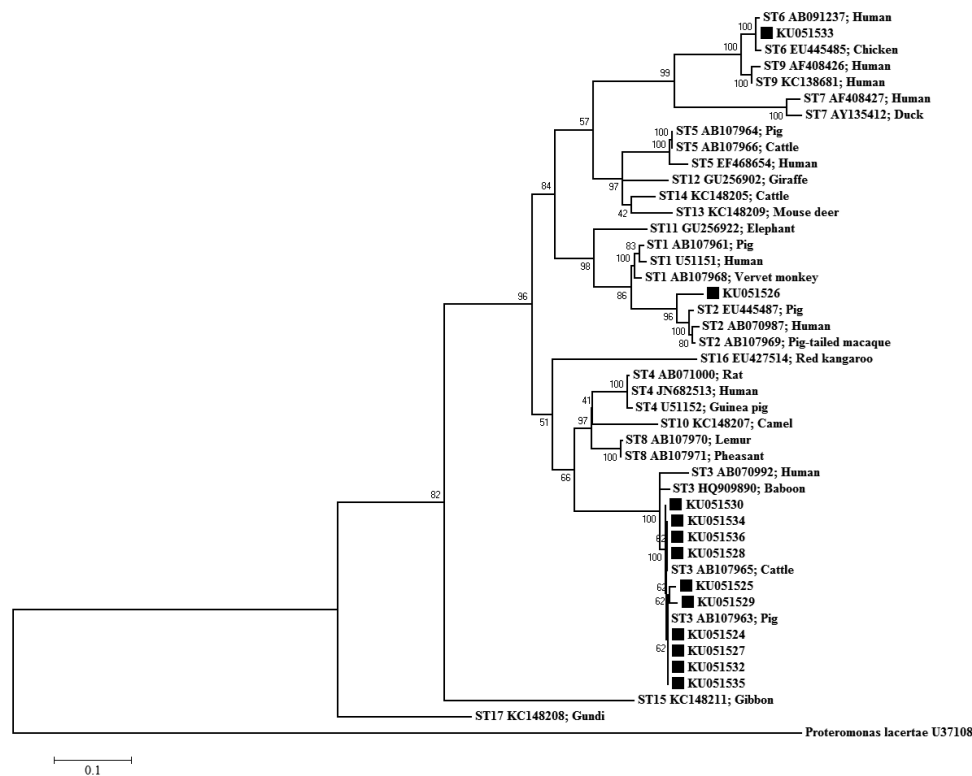
**Table 4.** Subtype distribution of *Blastocystis* according to subdistrict

Subdistrict	Subtype	No. of positive samples (%)
Khanon Luang	2	1/58 (1.7)
	3	4/58 (6.9)
Talat Kriap	3	2/18 (11.1)
	6	1/18 (5.6)
Ban Pho	3	3/66 (4.5)
Wat Yom	3	2/6 (3.2)
Ko Koet	-	0/15 (0.0)
Total		13/220 (5.9)

as ST6. All the sequences from the *Blastocystis*-positive samples were closely related to animal sequences (from pigs, cattle, and chickens). The NJ and MP trees showed the same clustering patterns as the ML tree (data not shown).

## DISCUSSION

The relatively low (5.9%) prevalence of *Blastocystis* observed in this study might be attributable to the characteristics of the study area, where public utilities, such as tap water, are available to almost every household. Therefore, the villagers are protected from infection because they use treated water in their daily activities. The prevalence of *Blastocystis* infection is higher in developing countries than in developed countries. However, it varies from country to country, and within the same country [2,10,11]. In Thailand, *Blastocystis* infection has been reported at rates as high as 37.2% [12]. Several risk factors seem to be associated with *Blastocystis* infection, including poor personal hygiene and high-risk behavior, poor community sanitation, socioeconomic status, lifestyle, and the culture of the population. *Blastocystis* can also infect a range of animals, including



**Fig. 3.** Maximum-likelihood phylogenetic analysis of *Blastocystis* SSU rDNA sequences. Black boxes indicate the sequences identified in this study.

pigs, cattle, monkeys, and chickens. Zoonotic STs have been isolated from these animals, and they may therefore act as reservoir hosts for this protozoan and facilitate its zoonotic transmission. Zoonotic transmission is considered an important mode of *Blastocystis* infection in humans, and most infections occur via the fecal-oral route.

To date, the genetic diversity of this protozoan has been demonstrated with SSU rRNA gene analyses, which have detected at least 17 distinct STs [4]. ST1-ST9 have been reported in humans, and ST3 is the most prevalent. In this study, ST3 was the predominant subtype, followed by ST2 and ST6. The findings of this study are consistent with those of several studies conducted in many countries, including Singapore, Turkey, Bangladesh, and Egypt [2,6,13,14], which all reported ST3 as the predominant subtype. However, this subtype has also been isolated from animals such as pigs, dogs, cattle, and non-human primates [15]. Surprisingly, ST1 was not detected in the present study, although several studies in Thailand have reported that ST1 is a common subtype [16-18]. This discrepancy could be attributable to differences in the study areas and study populations investigated, revealing different subtype distributions. We also observed ST6 in a 1-year-old child. ST6 is considered a typical 'avian' subtype [19], and is rare in non-avian hosts. The infection may have been transmitted by the unwashed hands of the parents or carers, after their contact with animals, or when the child was crawling on the ground in areas contaminated with *Blastocystis* cysts. This clearly demonstrates that animals are potential risk factors for *Blastocystis* infection and should be considered zoonotic sources.

In this study, the PCR primers that we used amplified the partial SSU rRNA gene [2], which contains highly variable nucleotides that allow *Blastocystis* to be differentiated into subtypes. This sequence also allows the construction of reliable phylogenetic trees. We believed that it is one of the best techniques for *Blastocystis* subtyping, instead of sequencing complete SSU rRNA gene. However, the 'barcode region', a 600-bp 5' region of *Blastocystis* SSU rRNA, is also recommended for *Blastocystis* subtyping [20]. It reduces the time and the costs of the procedure insofar as the sequence can be amplified with only a single round of PCR. Therefore, the 'barcode' PCR is a useful alternative method for large epidemiological studies.

The ML tree indicated that all the *Blastocystis*-positive samples were potentially involved in zoonotic transmission, as shown in Fig. 3. ST3 has been reported in pigs, but is uncommon. Thathsongsong et al. [18] demonstrated that ST1 was common in pigs kept

at an army base in Chonburi Province. In the present study, the individuals infected with ST3 may have acquired *Blastocystis* from pigs (person-to-pig or pig-to-person transmission via the fecal-oral route), because we observed that their livestock (pigs, chicken, and cattle) were regularly kept under or near their houses. However, stools must be collected from all the animals in the infected houses to test this assumption. It is difficult to avoid the aerosols emitted from animal stools, which could contribute to the transmission of *Blastocystis* in these houses (on the ground), and frequent animal contact may increase the risk of *Blastocystis* infection in this area.

In conclusion, the risk of *Blastocystis* zoonotic infection in these villagers was considered in this study. This risk can involve a combination of factors, including the traditional culture, human activities, and animal contact (pigs, cattle, and chickens), all of which increase the risk of *Blastocystis* infection in the study area, even though the rate of *Blastocystis* infection was relatively low in this study. The villagers must have access to proper health education regarding the prevention of parasitic infections because they do not understand the dangers associated with contact with animals infected with pathogenic organisms. They should also be encouraged to improve their personal hygiene and community health. Further studies are required to investigate the *Blastocystis* STs in the animals living in these villages.

## ACKNOWLEDGMENTS

We would like to thank all the participants and staff of the Department of Clinical Microscopy, Faculty of Allied Health Sciences, Chulalongkorn University, Bangkok, Thailand for their help in the collection of the stool samples. This research was supported by the National Research University Project, Office of Higher Education Commission, Thailand (WCU-58-001-HR).

## CONFLICT OF INTEREST

The authors declare that they have no conflicts of interest.

## REFERENCES

1. Tan KS. New insights on classification, identification, and clinical relevance of *Blastocystis* spp. *Clin Microbiol Rev* 2008; 21: 639-665.
2. Wong KH, Ng GC, Lin RT, Yoshikawa H, Taylor MB, Tan KS.

- Predominance of subtype 3 among *Blastocystis* isolates from a major hospital in Singapore. *Parasitol Res* 2008; 102: 663-670.
3. Roberts T, Barratt J, Harkness J, Ellis J, Stark D. Comparison of microscopy, culture, and conventional polymerase chain reaction for detection of *Blastocystis* sp. in clinical stool samples. *Am J Trop Med Hyg* 2011; 84: 308-312.
  4. Alfellani MA, Taner-Mulla D, Jacob AS, Imeede CA, Yoshikawa H, Stensvold CR, Clark CG. Genetic diversity of *Blastocystis* in live-stock and zoo animals. *Protist* 2013; 164: 497-509.
  5. Rene BA, Stensvold CR, Badsberg JH, Nielsen HV. Subtype analysis of *Blastocystis* isolates from *Blastocystis* cyst excreting patients. *Am J Trop Med Hyg* 2009; 80: 588-592.
  6. Souppart L, Moussa H, Cian A, Sanciu G, Poirier P, El Alaoui H, Delbac F, Boorom K, Delhaes L, Dei-Cas E, Viscogliosi E. Subtype analysis of *Blastocystis* isolates from symptomatic patients in Egypt. *Parasitol Res* 2010; 106: 505-511.
  7. Clark CG. Extensive genetic diversity in *Blastocystis hominis*. *Mol Biochem Parasitol* 1997; 87: 79-83.
  8. Larkin MA, Blackshields G, Brown NP, Chenna R, McGettigan PA, McWilliam H, Valentin F, Wallace IM, Wilm A, Lopez R, Thompson JD, Gibson TJ, Higgins DG. Clustal W and Clustal X version 2.0. *Bioinformatics* 2007; 23: 2947-2948.
  9. Tamura K, Stecher G, Peterson D, Filipski A, Kumar S. MEGA6: Molecular Evolutionary Genetics Analysis version 6.0. *Mol Biol Evol* 2013; 30: 2725-2729.
  10. Hirata T, Nakamura H, Kinjo N, Hokama A, Kinjo E, Yamane N, Fujita J. Prevalence of *Blastocystis hominis* and *Strongyloides stercoralis* infection in Okinawa, Japan. *Parasitol Res* 2007; 101: 1717-1719.
  11. Horiki N, Maruyama M, Fujita Y, Yonekura T, Minato S, Keneda Y. Epidemiologic survey of *Blastocystis hominis* infection in Japan. *Am J Trop Med Hyg* 1997; 56: 370-374.
  12. Popruk S, Udonsom R, Koompaong K, Mahittikorn A, Kusolsuk T, Ruangsittichai J, Palasuwan A. Subtype distribution of *Blastocystis* in Thai-Myanmar border, Thailand. *Korean J Parasitol* 2015; 53: 13-19.
  13. Meloni D, Sanciu G, Poirier P, El Alaoui H, Chabé M, Delhaes L, Dei-Cas E, Delbac F, Luigi Fiori P, Di Cave D, Viscogliosi E. Molecular subtyping of *Blastocystis* sp. isolates from symptomatic patients in Italy. *Parasitol Res* 2011; 109: 613-619.
  14. Yoshikawa H, Wu Z, Kimata I, Iseki M, Ali IK, Hossain MB, Zaman V, Haque R, Takahashi Y. Polymerase chain reaction-based genotype classification among human *Blastocystis hominis* populations isolated from different countries. *Parasitol Res* 2004; 92: 22-29.
  15. Stensvold CR, Alfellani M, Clark CG. Levels of genetic diversity vary dramatically between *Blastocystis* subtypes. *Infect Genet Evol* 2012; 12: 263-273.
  16. Thathaisong U, Siripattanapibong S, Mungthin M, Pipatsatibong D, Tan-Ariya P, Naaglor T, Leelayoova S. Identification of *Blastocystis* subtype 1 variants in the Home for Girls, Bangkok, Thailand. *Am J Trop Med Hyg* 2013; 88: 352-358.
  17. Leelayoova S, Siripattanapibong S, Thathaisong U, Naaglor T, Taamasri P, Piyaraj P, Mungthin M. Drinking water: a possible source of *Blastocystis* spp. subtype 1 infection in schoolchildren of a rural community in central Thailand. *Am J Trop Med Hyg* 2008; 79: 401-406.
  18. Thathaisong U, Worapong J, Mungthin M, Tan-Ariya P, Viputtigul K, Sudatis A, Noonai A, Leelayoova S. *Blastocystis* isolates from a pig and a horse are closely related to *Blastocystis hominis*. *J Clin Microbiol* 2003; 41: 967-975.
  19. Stensvold CR, Suresh GK, Tan KS, Thompson RC, Traub RJ, Viscogliosi E, Yoshikawa H, Clark CG. Terminology for *Blastocystis* subtypes-a consensus. *Trends Parasitol* 2007; 23: 93-96.
  20. Scicluna SM, Tawari B, Clark CG. DNA barcoding of *Blastocystis*. *Protist* 2006; 157: 77-85.
  21. Abe N. Molecular and phylogenetic analysis of *Blastocystis* isolates from various hosts. *Vet Parasitol* 2004; 120: 235-242.
  22. Silberman JD, Sogin ML, Leipe DD, Clark CG. Human parasite finds taxonomic home. *Nature* 1996; 380: 398.
  23. Rivera WL. Phylogenetic analysis of *Blastocystis* isolates from animal and human hosts in the Philippines. *Vet Parasitol* 2008; 156: 178-182.
  24. Arisue N, Hashimoto T, Yoshikawa H. Sequence heterogeneity of the small subunit ribosomal RNA genes among *Blastocystis* isolates. *Parasitology* 2003; 126: 1-9.
  25. Stensvold CR, Clark CG. Investigation of the molecular epidemiology of *Blastocystis* by use of a multi-locus sequence typing system for subtype 3. Unpublished data.
  26. Stensvold CR, Alfellani M, Clark CG. Levels of genetic diversity vary dramatically between *Blastocystis* subtypes. *Infect Genet Evol* 2012; 12: 263-273.
  27. Yan MY, Su LS, Lai YR, Ye HJ, Liao H, Chen FG, Luo PX, Hou PZ, Lai FX. Phylogenetic analysis of *Blastocystis hominis* isolates in China. Unpublished data.
  28. Noël C, Peyronnet C, Gerbod D, Edgcomb VP, Delgado-Viscogliosi P, Sogin ML, Capron M, Viscogliosi E, Zenner L. Phylogenetic analysis of *Blastocystis* isolates from different hosts based on the comparison of small-subunit rRNA gene sequences. *Mol Biochem Parasitol* 2003; 126: 119-123.
  29. Engsbro AL, Stensvold CR. *Blastocystis*: to treat or not to treat... but how? *Clin Infect Dis* 2012; 55: 1431-1432.
  30. Parkar U, Traub RJ, Vitali S, Elliot A, Leveck B, Robertson I, Geurden T, Steele J, Drake B, Thompson RC. Molecular characterization of *Blastocystis* isolates from zoo animals and their animal-keepers. *Vet Parasitol* 2010; 169: 8-17.
  31. Yoshikawa H. Phylogenetic studies of *Blastocystis* isolates from zoo marsupial mammals inferred from the small subunit ribosomal RNA gene sequences. Unpublished data.