

Case Report

Adult Intracranial Gliofibroma : A Case Report and Review of the Literature

Ho Kang, M.D.,¹ Jin Wook Kim, M.D.,¹ Young-Bem Se, M.D.,¹ Sung-Hye Park, M.D.²

Departments of Neurosurgery,¹ Pathology,² Seoul National University Hospital, Seoul, Korea

Gliofibroma is an extremely rare biphasic tumor with an astrocytic and benign mesenchymal component, which commonly occurs within the first two decades of life. The exact biological behavior of the tumor is not fully understood. Therefore, it is not listed as a distinct entity in the current World Health Organization classification of central nervous system tumors. Here, we describe a rare case of gliofibroma, which was located on the medial temporal lobe in a 61-year-old woman. Preoperatively, we misdiagnosed it as a meningioma because it was a well-demarcated and well-enhanced extra-axial mass with calcification and bony destruction. On the histopathological and immunohistochemical examination, the tumor consisted of a mixture of glial tissue and mesenchymal tissue and it was finally diagnosed as a gliofibroma. To our knowledge, this case of intracranial gliofibroma is in the oldest patient ever reported.

Key Words : Gliofibroma · Intracranial tumor.

INTRODUCTION

Gliofibroma is an extremely rare neoplasm specified by biphasic morphology of both astrocytic and mesenchymal components. Since Friede first reported this unusual tumor in the medulla oblongata of a 3-year-old child in 1978, only about 30 cases have been reported to date⁸⁻¹⁰. The tumor commonly occurs in the young, less than 20 years old. Because of the paucity of clinical and pathological information regarding this type of tumor, it has not been yet included as a distinct entity in the current World Health Organization classification of tumors of the central nervous system (CNS)^{9,12}.

In this report, we describe a case of intracranial gliofibroma in the medial temporal area in a 61-year-old woman. Radiological, intraoperative, and histopathological findings of the tumor are discussed. To our knowledge, this case of intracranial gliofibroma is in the oldest patient ever reported.

CASE REPORT

A previously healthy 58-year-old woman was referred to our hospital because of abnormal findings on computed tomography (CT), which was incidentally taken for evaluation after minor head trauma. She had some minor hearing disturbance of

the right ear a few years previously, but hearing was serviceable. In addition, there were no abnormal symptoms or signs, such as facial motor or sensory deficits, diplopia, seizure, or motor or sensory deficits of extremities.

CT showed an iso-attenuated mass with a lobulating contour on the right medial temporal area. The lesion was destroying the petrous portion of the temporal bone with peripheral calcification density involving the right cavernous sinus and posterior fossa from the pons to the midbrain (Fig. 1A). Magnetic resonance (MR) imaging revealed that the tumor had iso-signal intensity on T1-weighted imaging (T1WI), heterogeneous and relatively low density on T2-weighted imaging (T2WI) (Fig. 1B). Also it was enhanced well by Gadolinium (Fig. 1C, D). The lesion caused chronic otitis media by blocking the right eustachian tube, which might have caused a hearing disturbance. On angiography, there was minimal tumor staining from a dural branch of the petrous internal carotid artery. After considering all imaging findings, our preoperative radiological diagnosis was considered to be a meningioma.

A right-sided pterional craniotomy was performed after removing a zygoma. The tumor was avascular yellowish tumor. It was too hard to be resected even using a Cavitron ultrasonic surgical aspirator. The tumor was subtotally removed except medial portion encasing the left internal carotid artery. There was no

• Received : March 11, 2015 • Revised : August 15, 2015 • Accepted : August 21, 2015

• Address for reprints : Jin Wook Kim, M.D.

Department of Neurosurgery, Seoul National University Hospital, 101 Daehak-ro, Jongno-gu, Seoul 03080, Korea
Tel : +82-2-2072-2862, Fax : +82-2-744-8459, E-mail : wook616@hanmail.net

• This is an Open Access article distributed under the terms of the Creative Commons Attribution Non-Commercial License (<http://creativecommons.org/licenses/by-nc/3.0>) which permits unrestricted non-commercial use, distribution, and reproduction in any medium, provided the original work is properly cited.

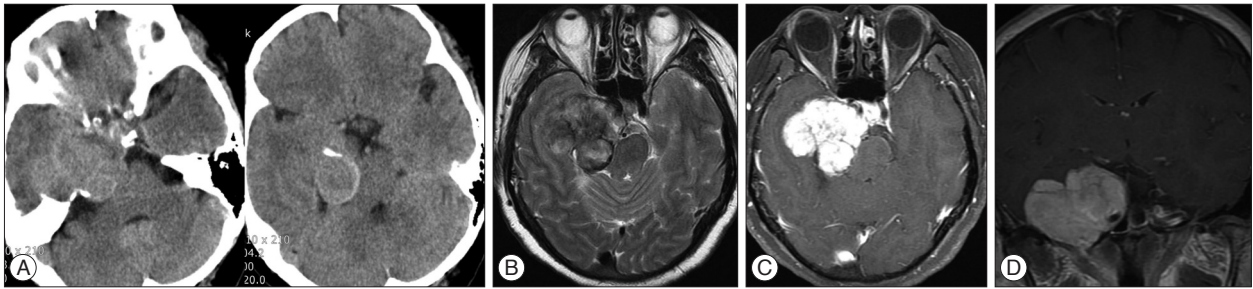


Fig. 1. CT revealing a calcified mass with a lobulating contour on the petrous portion of the right temporal bone. A : The lesion was involving the right cavernous sinus and posterior fossa from the pons to the midbrain. B : Axial T2WI on MR showing a heterogeneous mass with a relatively lower signal intensity than normal parenchyma. C and D : Postgadolinium MR imaging showed a homogeneous well-enhanced lesion partially encasing the right internal carotid artery.

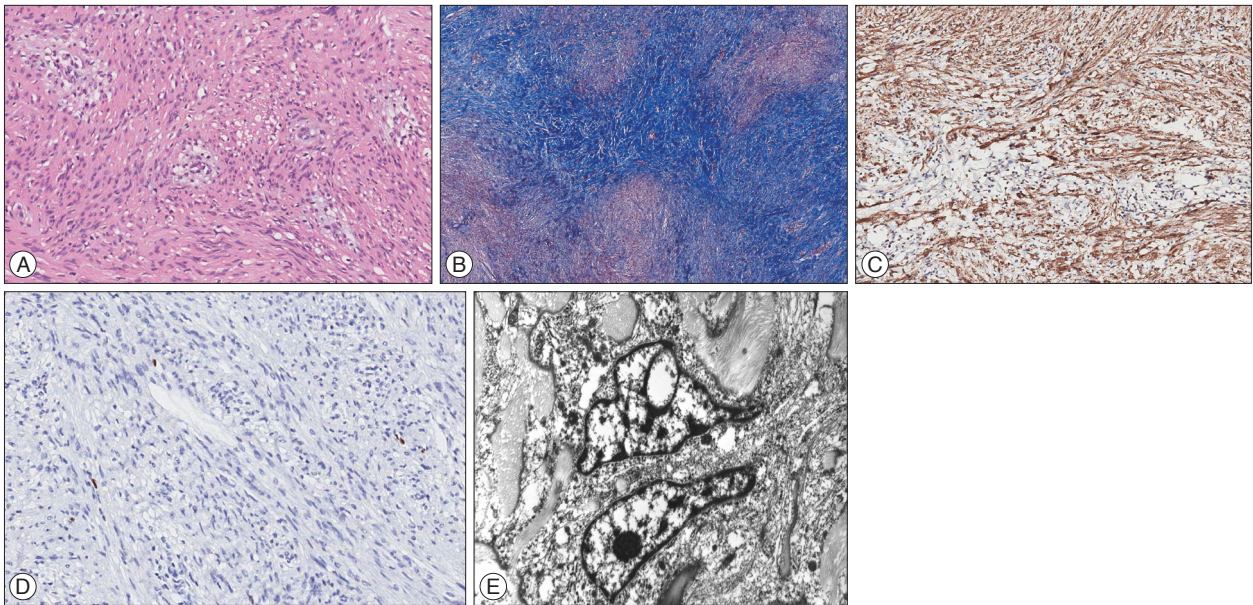


Fig. 2. Photomicrographs of the gliofibroma showing fascicular arrangement of spindle-shaped glial cells with prominent blood vessels (A : hematoxylin and eosin 200 \times) and abundant intercellular collagen deposition (B : Masson trichrome staining, 20 \times). Immunohistochemistry revealing GFAP-positive glial components and a relatively low Ki-67 labeling index (C : GFAP, 100 \times , D : Ki-67, 200 \times). Nuclei of tumor cells are oval to elongated and cytoplasm contains rough endoplasmic reticulum, lysosomes, and intermediate filaments (E : electromicroscopy, uranyl acetate, and lead citrate, 8000 \times).

abnormality on intraoperative neuromonitoring during surgery. Immediately after surgery, she presented right peripheral-type facial palsy Grade IV according to the House-Brackmann grading system and mild hypesthesia along the dermatome of the trigeminal nerve maxillary branch.

The tumor tissue was fixed in formalin and embedded in paraffin. Hematoxylin and eosin stain, the Masson trichrome stain and a few immunohistochemical stain using several monoclonal antibody were performed. Under the light microscope, the tumor was seen composed of spindle-shaped cells with prominent blood vessels and abundant intercellular collagen deposits (Fig. 2A, B). Spindle-shaped cells were presumed to be glial cells (Fig. 2C). Mitotic count was less than 1 per 10 high-power fields. There was no necrosis, prominent nucleoli, or microvascular proliferation. Immunostaining by antibody Ki-67 was almost negative, because the labeling index was below 0.5% (Fig. 2D). The other specific immunohistochemical staining was negative

for epithelial membrane antigen, and positive for vimentin and S-100.

Electromicroscopy revealed individual tumor cells surrounded by abundant collagen and nuclei of tumor cells were oval to elongated (Fig. 2E). Ultimately, the tumor was diagnosed as a gliofibroma.

The patient received no additional radiotherapy or chemotherapy, and was regularly followed up until 4 years after surgery. Although she had recovered facial motor function to House-Brackmann Grade II palsy, facial hypesthesia never fully recovered. Until the last serial follow up MR, there had been no tumor growth.

DISCUSSION

The detailed clinical information for a total of 32 patients published to date is shown in Table 1. Although there is no clear con-

Table 1. Clinical findings of gliofibroma published in the literature

Author/reference	Year	Age (years)/sex	Location	Surgery	Adjuvant therapy	FU/clinical outcome
Intracranial gliofibromas						
Friede ⁸⁾	1978	3.9/F	Medulla oblongata	Autopsy	Ch+RT	3 m/died
Reinhardt and Nahser ¹⁸⁾	1984	16/F	Rt temporal lobe	GTR	None	6 m/alive
Bonin et al. ²⁾	1990	32/F	4th ventricle	Biopsy	NA	NA
Snipes et al. ²³⁾	1991	2 m/F	Thalamus/posterior fossa	PR	None	16 m/died
Vazquez et al. ²⁵⁾	1991	11 m/F	Rt temporal lobe	PR	None	2 yr/alive
Schober et al. ²¹⁾	1992	18/M	Rt frontal lobe	GTR	NA	NA
Iglesias et al. ¹¹⁾	1992	1.2/F	Lt frontoparietal lobe	GTR	None	18 m/alive
Rushing et al. ¹⁹⁾	1993	6 m/F	4th ventricle	GTR	None	2 yr/alive
Cerdeña-Nicolas and Kepes ⁵⁾	1993	9/M	Lt parietal lobe	GTR	NA	5.5 m/alive
		4/F	4th ventricle	Biopsy	NA	NA
Caldemeyer et al. ⁴⁾	1995	8/M	Temporal lobe	Biopsy	Ch	NA
		6 m/F	Cerebellum	GTR	None	NA
Prayson ¹⁷⁾	1996	3 m/M	Lt frontotemporal lobe	PR	None	3 yr/alive
Mölenkamp et al. ¹⁴⁾	1998	NA	NA	NA	NA	NA
Sharma et al. ²²⁾	1998	10/M	Temporal lobe	GTR	None	3 m/alive
		54/F	Rt parietal lobe	GTR	RT	6 m/died
Kim et al. ¹²⁾	2003	25/M	Lt parietal lobe	GTR	None	2 m/alive
Suarez et al. ²⁴⁾	2004	NA	NA	Biopsy	Ch	3 yr/alive
Erguvan-Onal et al. ⁷⁾	2004	16/M	Lt parietal lobe	GTR	None	14 m/alive
Deb et al. ⁶⁾	2006	15/NA	Brain stem	GTR	None	NA
Goyal et al. ¹⁰⁾	2007	8/M	Rt temporoparietooccipital lobe	PR	Ch+RT	1 yr/alive
		15/F	3rd ventricle	PR/CR	Ch+RT*	2 yr/alive
Sarkar et al. ²⁰⁾	2009	3 m/F	Lateral ventricles	Biopsy	None	10 yr/alive
Altamirano et al. ¹⁾	2011	7/F	Thalamus/mesencephalon	PR	Ch+RT	4 m/died
Gargano et al. ⁴⁾	2013	10.7/F	Lt frontoparietal lobe	GTR	Ch+RT	2 yr/alive
Present case	2015	61/F	Rt medial temporal lobe	PR	None	4 yr/alive
Spinal gliofibromas						
Budka and Sunder-Plassmann et al. ³⁾	1980	45/F	Spinal cord	GTR		1 yr/alive
Iglesias et al. ¹¹⁾	1984	11 d/M	Spinal cord	GTR	None	4 yr/alive
Vazquez et al. ²⁵⁾	1991	9/F	Spinal cord	PR	RT	19 m/died
		5.6/M	Spinal cord	PR	RT	2.5 yr/alive
Sharma et al. ²²⁾	1998	24/F	Spinal cord	PR	None	2 yr/alive
Matsumura et al. ¹³⁾	2002	12/F	Spinal cord	GTR	NA	2.9 yr/alive

*After second surgery. NA : not available, Rt : right, Lt : left, d : days, m : months, yr : years, GTR : gross total resection, PR : partial resection, Ch : chemotherapy, RT : radiotherapy

sensus about this rare tumor concerning tumorigenesis, biological behavior, and prognosis, some common characteristics in the clinical, radiological, and histopathological aspects were found.

First, gliofibromas have a tendency to affect children more than adults despite unknown predilection age^{6,9-11,15,20)}. Among 32 patients, only six (19%) including our patient were over 20 years old. There were only three middle-aged patients more than 40 years old. A female predominance of 2 : 1 has been noted by analysis of previous reports^{4,6)}. Furthermore, the majority of gliofibromas, with the exception of five cases in the infratentorial area and seven cases in the spinal cord, had a supratentorial location, although the tumor has been described as arising in both supra-

tentorial and infratentorial areas^{6,10,12)}.

Second, some reports described radiological characteristics of gliofibromas, although no specific radiological features allowed a preoperative diagnosis of gliofibroma^{4,15)}. CT shows a well-demarcated mass with heterogeneous or homogeneous contrast enhancement. On MR images, gliofibromas appear to have various signal intensities including iso- to hyperintense on T1WI, and hypo- to hyperintense on T2WI. T2WI in our case showed an isointense mass with partially hyperintense regions. In particular, such low signal intensity on T2WI is thought to result from the reflection of the dense connective tissues as one of the peculiar characteristics in gliofibromas. Because these radiological

findings include an extra-axial location, preoperative radiological misdiagnosis as a meningioma has been reported, as was the case in our patient⁶.

The most peculiar characteristics of gliofibromas are in the histopathological findings. Gliofibromas have peculiar 'biphasic' features composed of glial and mesenchymal components^{6,9,10,12,15,17,20,22}. In our patient, the tumor clearly showed a similar biphasic appearance of mixed fibrillary astrocytes and mesenchymal components. For this reason, gliofibromas should be distinguished from other collagen-producing CNS neoplasms such as gliosarcomas and desmoplastic infantile astrocytomas or gangliomas (DIA/DIG)^{9,10,12,15}. However, gliofibromas can be distinguished in several histopathological aspects. Although DIA/DIG have a prominent desmoplastic component similar to gliofibromas, it is usually a benign cystic tumor located on the brain surface and it has no mesenchymal component^{9,12}. Moreover, gliofibroma can be distinguished from gliosarcoma by the absence of a clear-cut malignant mesenchymal component.

Although there are some exceptional cases, the majority of gliofibromas have a benign histology such as no necrosis, no microvascular proliferation, and a very low MIB-1 labeling index like this case^{6,9,10,12,15,16,20}. In addition, electron microscopic and chromosomal studies of gliofibromas have only been reported occasionally, and have not yet provided conclusive information.

Radical surgical resection as an initial management seems to be the treatment of choice. Most of the published cases with gliofibroma presented a benign tumor nature, indolent clinical course, and showed no definite evidence of disease progression. However, some cases with a poor outcome have also been reported^{9,10,16,24}. Though some patients underwent adjuvant treatments such as radiation therapy or chemotherapy, the role of radiation therapy and chemotherapy is still controversial, and the prognosis of this rare tumor is not clearly understood. In our case, there was no disease progression during 4 years of follow-up, even if partially resected. However, long-term follow-up and more accumulated clinical experiences should be mandatory to understand this rare tumor.

CONCLUSION

In this report, we presented a case of intracranial gliofibroma in a 61-year-old woman. It is rare tumor mostly reported from pediatric patients. Also, it has characteristic biphasic microscopic morphology. We believe this case adds support to understanding more fully the nature and biological behavior of this rare tumor.

References

- Altamirano E, Jones MC, Drut R : Gliofibroma. Comunicación de un caso pediátrico y revisión de la bibliografía. *Patol Rev Latinoam* 49 : 221-225, 2011
- Bonnin JM, Warner JC, Turner MS : 1 Cystic gliofibroma of the fourth ventricle. *J Neuropathol Exp Neurol* 49 : 261, 1990. Abstract. DOI : 10.1093/jnen/49.3.261
- Budka H, Sunder-Plassmann M : Benign mixed glial-mesenchymal tumour ("glio-fibroma") of the spinal cord. *Acta Neurochir (Wien)* 55 : 141-145, 1980
- Caldemeyer KS, Zimmerman RA, Azzarelli B, Smith RR, Moran CC : Gliofibroma : CT and MRI. *Neuroradiology* 37 : 481-485, 1995
- Cerda-Nicolas M, Kepes JJ : Gliofibromas (including malignant forms), and gliosarcomas : a comparative study and review of the literature. *Acta Neuropathol* 85 : 349-361, 1993
- Deb P, Sarkar C, Garg A, Singh VP, Kale SS, Sharma MC : Intracranial gliofibroma mimicking a meningioma : a case report and review of literature. *Clin Neurol Neurosurg* 108 : 178-186, 2006
- Erguvan-Onal R, Ateş O, Onal C, Aydin NE, Koçak A : Gliofibroma : an incompletely characterized tumor. *Tumori* 90 : 157-160, 2004
- Friede RL : Gliofibroma. A peculiar neoplasia of collagen forming glia-like cells. *J Neuropathol Exp Neurol* 37 : 300-313, 1978
- Gargano P, Zuccaro G, Lubieniecki F : Intracranial gliofibroma : a case report and review of the literature. *Case Rep Pathol* 2014 : 165025, 2014
- Goyal S, Puri T, Gunabushanam G, Sharma MC, Sarkar C, Julka PK, et al. : Gliofibroma : a report of three cases and review of literature. *Acta Oncol* 46 : 1202-1204, 2007
- Iglesias JR, Richardson EP Jr, Collià F, Santos A, Garcia MC, Redondo C : Prenatal intramedullary gliofibroma. A light and electron microscope study. *Acta Neuropathol* 62 : 230-234, 1984
- Kim Y, Suh YL, Sung C, Hong SC : Gliofibroma : a case report and review of the literature. *J Korean Med Sci* 18 : 625-629, 2003
- Matsumura A, Takano S, Nagata M, Anno I, Nose T : Cervical intramedullary gliofibroma in a child : a case report and review of the literature. *Pediatr Neurosurg* 36 : 105-110, 2002
- Mölenkamp G, Riemann B, Kuwert T, Sträter R, Kurlemann G, Schober O, et al. : Monitoring tumor activity in low grade glioma of childhood. *Klin Padiatr* 210 : 239-242, 1998
- Nomura M, Hasegawa M, Kita D, Yamashita J, Minato H, Nakazato Y : Cerebellar gliofibroma with numerous psammoma bodies. *Clin Neurol Neurosurg* 108 : 421-425, 2006
- Prayson RA : Disseminated spinal cord astrocytoma with features of gliofibroma : a review of the literature. *Clin Neuropathol* 32 : 298-302, 2013
- Prayson RA : Gliofibroma : a distinct entity or a subtype of desmoplastic astrocytoma? *Hum Pathol* 27 : 610-613, 1996
- Reinhardt V, Nahser HC : Gliofibroma originating from temporoparietal hamartoma-like lesions. *Clin Neuropathol* 3 : 131-138, 1984
- Rushing EJ, Rorke LB, Sutton L : Problems in the nosology of desmoplastic tumors of childhood. *Pediatr Neurosurg* 19 : 57-62, 1993
- Sarkar R, Yong WH, Lazareff JA : A case report of intraventricular gliofibroma. *Pediatr Neurosurg* 45 : 210-213, 2009
- Schober R, Bayindir C, Canbolat A, Urich H, Wechsler W : Gliofibroma : immunohistochemical analysis. *Acta Neuropathol* 83 : 207-210, 1992
- Sharma MC, Gaikwad S, Mehta VS, Dhar J, Sarkar C : Gliofibroma : mixed glial and mesenchymal tumour. Report of three cases. *Clin Neurol Neurosurg* 100 : 153-159, 1998
- Snipes GJ, Steinberg GK, Lane B, Horoupian DS : Gliofibroma. Case report. *J Neurosurg* 75 : 642-646, 1991
- Suarez CR, Raj AB, Bertolone SJ, Coventry S : Carboplatinum and vincristine chemotherapy for central nervous system gliofibroma : case report and review of the literature. *J Pediatr Hematol Oncol* 26 : 756-760, 2004
- Vazquez M, Miller DC, Epstein F, Allen JC, Budzilovich GN : Glioneurofibroma : renaming the pediatric "gliofibroma" : a neoplasm composed of Schwann cells and astrocytes. *Mod Pathol* 4 : 519-523, 1991