



Composition of the insect diet in feces of yellow-throated marten, *Martes flavigula*, in Jirisan National Park, South Korea

Moon Bo Choi^{1,2,*}, Donggul Woo³, Tae Young Choi³

¹Institute for Phylogenomics and Evolution, Kyungpook National University, Daegu 702-701, Republic of Korea

²School of Applied Biosciences, College of Agriculture and Life Sciences, Kyungpook National University, Daegu 702-701, Republic of Korea

³Ecosystem Conservation Division, National Institute of Ecology, Seocheon 325-813, Republic of Korea

Abstract

The composition of the *Martes flavigula* diet has been extensively studied, but little is known about its insect component. This study characterized the insect diet and insect nest materials in the feces of *M. flavigula*. A total of 952 fecal samples were collected in Jirisan National Park from January 2009 to November 2011, and 1379 species or taxonomic groups were identified. *M. flavigula* fed on insects (8.7%) and bee wax (5.0%), which comprised 2.9% and 4.4% of the dry weight of *M. flavigula* feces, respectively. A total of 12 insect species belonging to 8 families in 3 orders were identified. The most frequently found insects were Hymenoptera (frequency of occurrence, FO, 89.1), including *Vespa simillima simillima* (FO, 37.3) and *Vespula koreensis koreensis* (FO, 20.0). The Vespidae constituted the majority of the insect diet in autumn when the diversity of marten's prey was strongly reduced, probably because the numbers of social insects were sufficient for *M. flavigula*. In addition, the data suggest that *M. flavigula* attacks the nests of social wasps in late autumn when males do not have a venomous sting and new queens are less aggressive than workers. Bee wax appeared in all seasons and the highest rate was from spring to early summer. However, the remains of honeybees were not found in feces; thus, *M. flavigula* presumably eats honey but not honeybees.

Key words: insect diet, *Martes flavigula*, Vespidae, yellow-throated marten

INTRODUCTION

The martens (genus *Martes*) are medium-sized animals belonging to Mustelidae, Carnivora; in total, 7 species are known worldwide. The martens are widespread in tropical, temperate, and boreal forest zones of the Old and New World. Martens are listed in the IUCN Red List (2014) as 'Least Concern' or 'Vulnerable' species (Buskirk 1994).

Yellow-throated marten, *Martes flavigula* Boddaert 1785, is brownish-yellow with golden-orange dorsum of the head, whereas forefeet, rear legs and the tail are dark

brown or black. Body and tail lengths are 400–600 mm and 380–430 mm, respectively. The adult weight is approximately 3.4 kg and the life span is approximately 14 years. Yellow-throated martens mate in August and give birth in April (Lekagul and McNeely 1977, Nowak 1999). *M. flavigula* moves in groups of 2 or occasionally 3 (Fig. 1a), unlike the other six *Martes* species, which are solitary (Grassman et al. 2005, Choi et al. 2009). *M. flavigula* inhabits sub-tropical and temperate forests of the Far East

<http://dx.doi.org/10.5141/ecoenv.2015.041>



This is an Open Access article distributed under the terms of the Creative Commons Attribution Non-Commercial License (<http://creativecommons.org/licenses/by-nc/3.0/>) which permits unrestricted non-commercial use, distribution, and reproduction in any medium, provided the original work is properly cited.

Received 23 March 2015, Accepted 14 May 2015

*Corresponding Author

E-mail: kosinchoi@hanmail.net

Tel: +82-53-950-5762



Fig. 1. Two yellow-throated martens, *Martes flavigula* (a), and their feces (b) in Jirisan National Park of South Korea.

and Southeast Asia, southern China, the Himalayas, and India (Prater 1971, Harrison et al. 2004, Proulx et al. 2004).

M. flavigula is found across the whole Korean peninsula with an estimated population of 2000–3000 individuals based on presumed 50–60 individuals in Jirisan National Park (Choi et al. 2011). Despite its ‘Least Concern’ or ‘Vulnerable’ status in the IUCN Red List (2014), *M. flavigula* is considered to be an endangered species (Class II) by the Ministry of Environment of South Korea. *M. flavigula* is a top-level predator that plays the role of an umbrella species for conservation of the forest ecosystem and biodiversity because there are no large predators in the ecosystems of South Korea (Choi et al. 2009, 2010).

Although martens mainly feed on rodents and fruits (De Marinis and Masseti 1995, Zhou et al. 2010), their diet varies with the location and seasons (Zhou et al. 2010, 2011). Martens, including *M. flavigula*, are omnivorous and feed on fruits, rodents, birds, amphibians, reptiles, and insects (Lekagul and McNeely 1977, Clevenger 1994, Harrison et al. 2004, Parr and Duckworth 2007, Zhou et al. 2010, 2011). Like other martens, *M. flavigula* is considered to be an important seed disperser (Zhou et al. 2008). Choi et al (2009, 2012) reported that groups of *M. flavigula*

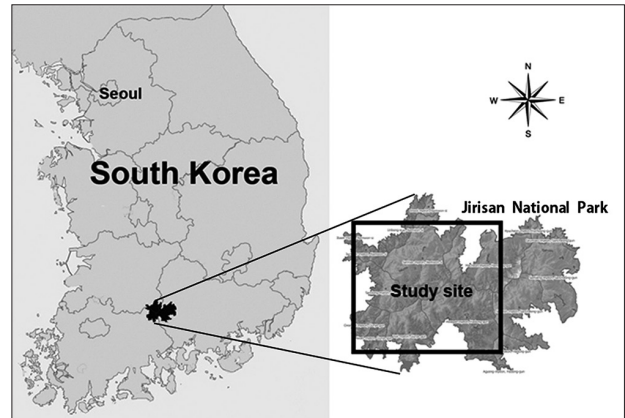


Fig. 2. The study site in Jirisan National Park.

forage on relatively large animals such as roe deer, young wild boar, and water deer. The diet of *M. flavigula* varies with prey resources in the environment. This dietary plasticity indicates adaptability of this marten species to new habitats (Zhou et al. 2008).

The composition of the martens’ diet has been extensively studied, but little is known about its insect component. This study characterized the insect diet of *M. flavigula* adapted to Korean ecosystems by identifying the species of seasonal insects in the feces of *M. flavigula*.

MATERIALS AND METHODS

Field survey

This study was conducted in Jirisan National Park in South Korea, which contains 471,758 km² of a typical temperate forest (Fig. 2). The feces of *M. flavigula* were collected along the Mt. Jirisan ridge. *M. flavigula* marked their range by placing their feces on small rocks and fallen trees (Fig. 1b; Choi et al. 2009). The dates and coordinates of collection sites were recorded, and the feces were placed in plastic bags and stored at –80°C. Sample collection was conducted monthly from January 2009 to November 2011.

Insect diet analysis

Analyses of fecal samples were performed according to the method of Jedrejewska and Jedrejewski (1998). The contents of frozen feces were extracted by incubating them in water for 3 days; the samples were then filtered through a mesh sieve (5 mm). The matter that remained

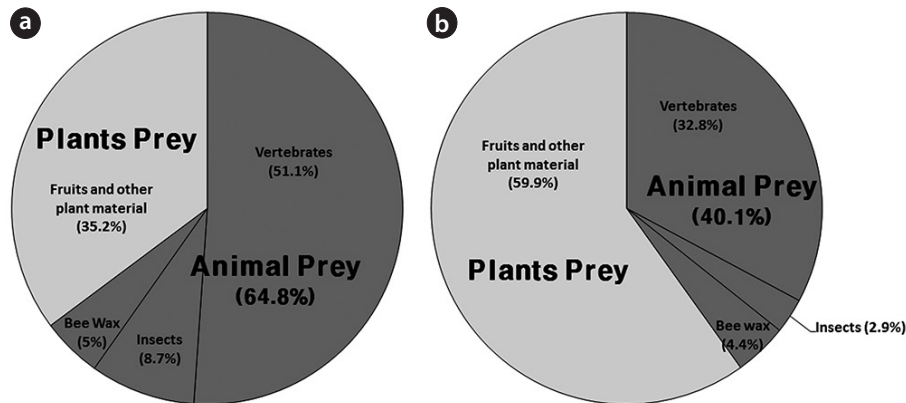


Fig. 3. Taxonomic composition of *Martes flavigula* feces. (a) Dietary composition of the feces, (b) Dry weight (g) of the diet.

in the sieve was dried in an oven for 5 h at 50°C and insect taxa were identified under a microscope. Social wasps were identified according to Yamane et al. (1980), Kim et al. (2006), and Archer (2012). The insect diet composition was expressed in two ways: as the frequency of occurrence (FO) and dry weight (DW) of biomass. The FO was calculated according to Balestrieri et al. (2011) and Zhou et al. (2011) as:

$$\frac{\text{The number of occurrences of the species or taxonomic group}}{\text{Total number of fecal samples}} \times 100$$

The DW was defined as:

$$\frac{\text{The weight of prey species}}{\text{Total DW of fecal samples}} \times 100$$

Statistical analyses

Two-way PERMANOVA (permutation multivariate analysis of variance) was used to test the independent and interactive effects between the seasons and frequency of insects of each taxonomic group. The non-parametric PERMANOVA test calculates a pseudo- F (based on permutations), which is comparable to the F statistic from ANOVA and is not affected by non-normal distributions of data. The Euclidean distance measure was used. Multivariate analyses were performed in PAST (Hammer et al. 2001) using 9999 permutations.

RESULTS

In total, 952 fecal samples were collected during the

study period. Among the total 1379 species or taxonomic groups identified, we detected both animals (dietary composition, DC, 64.8%; DW, 40.1%) and plants (DC, 35.2%; DW 59.9%). Among the remains of animal origin, we detected vertebrates (DC, 51.1%; DW, 32.8%), insects (DC, 8.7%; DW, 2.9%), and bee wax (DC, 5.0%; DW, 4.4%) (Fig. 3). A total of 12 insect species belonging to 8 families in 3 orders were identified (Table 1). The most frequent were Hymenoptera (FO, 89.1), especially *Vespa simillima simillima* (FO, 37.3) (Fig. 4a) and *Vespula koreensis koreensis* (FO, 20.0) (Fig. 4b), followed by Coleoptera (FO, 15.5) (Fig. 4e), such as *Dorcus titanus* and *Allomyrina dichotoma*, and Orthoptera (FO, 4.5) (Fig. 4d). Although we did not consider bee wax as a component of the insect diet, its FO was 69; honeybees were not found (Table 1 and Fig. 4c).

Total DW of the insect diet in collected fecal samples was 51.8 g. The Vespidae constituted 48.2 g (93.0%). Coleoptera and Orthoptera accounted for 2.7 g (5.3%) and 0.8 g (1.5%), respectively (Table 1).

M. flavigula fed only on Vespidae in winter and spring, and also consumed Coleoptera and Orthoptera in summer and autumn. In autumn, Vespidae made up most of its insect diet, as their numbers rapidly increase in late summer and autumn. Bee wax appeared in the diet of *M. flavigula* in all four seasons and the highest relative percentage was found from spring to early summer (Fig. 5). However, the frequency of insect occurrence did not differ significantly among seasons (PERMANOVA, $F = 2.08$, $P = 0.092$), but differed significantly among taxonomic groups ($F = 4.25$, $P = 0.007$). The interaction between seasons and taxonomic groups was significant ($F = 2.65$, $P = 0.016$) (Table 2).

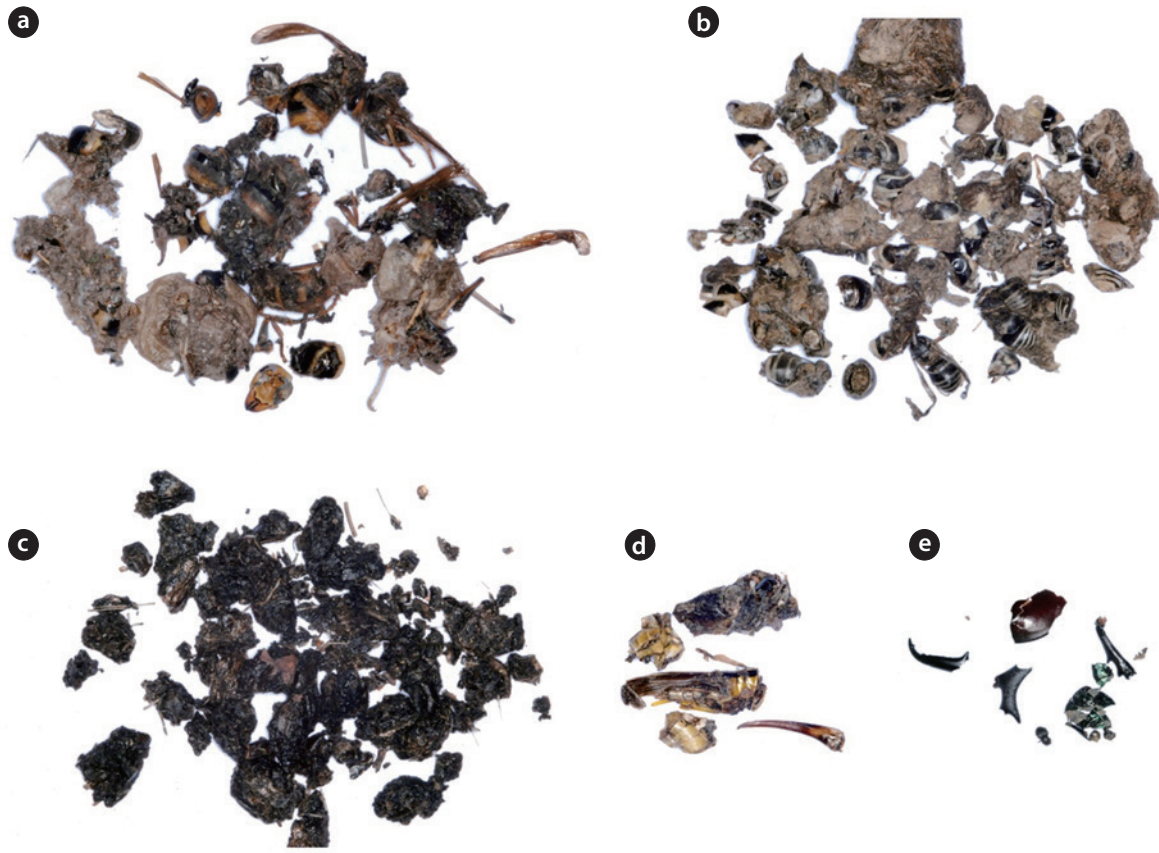


Fig. 4. Remains of insects in feces of *Martes flavigula*. (a) Hornets, (b) Yellow jackets, (c) Bee wax, (d) Grasshoppers, (e) Beetles.

Table 1. Insect diet composition in feces of *Martes flavigula* in Jirisan National Park, South Korea

Order	Family	Species	FO (%)	DW (%)
Hymenoptera	Vespidae	<i>Vespa simillima simillima</i>	37.3(34.2%)	21.7(41.9%)
		<i>Vespa crabro flavofasciata</i>	5.5(5.0%)	2.6(5.0%)
		<i>Vespa ducalis</i>	0.9(0.8%)	0.1(0.2%)
		<i>Vespa analis parallela</i>	0.9(0.8%)	0.1(0.2%)
		[§] <i>Vespa</i> spp.	12.7(11.7%)	6.9(13.3%)
		<i>Vespula koreensis koreensis</i>	20.0(18.3%)	12.6(24.3%)
		[§] <i>Vespula</i> spp.	10.9(10.0%)	4.2(8.1%)
	Apidae	[§] <i>Apis</i> spp. (Bee wax)	0.9(0.8%) (69)	0.1(0.2%) (78.4)
	Subtotal		89.1(81.7%)	48.3(93.2%)
Coleoptera	Tenebrionidae	Not identified	0.9(0.8%)	0.1(0.2%)
	Lucanidae	<i>Dorcus titanus castanicolor</i>	2.7(2.5%)	0.6(1.2%)
	Dynastidae	<i>Allomyrina dichotoma</i>	0.9(0.8%)	0.1(0.2%)
	Rutelidae	Not identified	10.9(10.0%)	1.9(3.7%)
	Subtotal		15.5(14.2%)	2.7(5.3%)
Orthoptera	Tettigoniidae	Not identified	0.9(0.8%)	0.1(0.2%)
	Acrididae	Not identified	3.6(3.3%)	0.7(1.4%)
	Subtotal		4.5(4.2%)	0.8(1.5%)

FO, frequency of occurrence; DW, dry weight.

[§]The spp. of *Vespa*, *Vespula* and *Apis* were unidentified because their bodies were crushed in feces.

*Bee wax was included because it is a honeybee hive material.

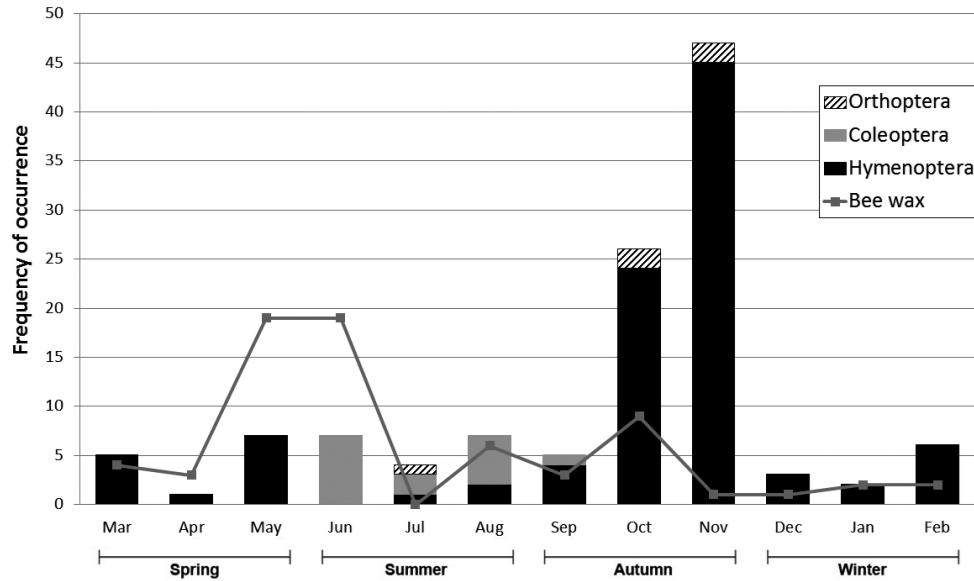


Fig. 5. Monthly and seasonal changes in the composition of *Martes flavigula* insect diet.

DISCUSSION

In this study, we characterized the insect diet of *M. flavigula* in different seasons. Even though insects were not the main diet of martens, they were consumed throughout the year and included Hymenoptera, Coleoptera, Orthoptera, Homoptera, and Hemiptera (Zhou et al. 2011). The ratio of insects to other components of martens' diet was considerable (about 10-30%) (Zhou et al. 2010). The two most frequently detected taxa were Hymenoptera and Coleoptera, which were in abundance from spring to autumn (Marchesi and Mermod 1989, Clevenger 1993, 1994, De Marinis and Masseti 1995, Zhou et al. 2010, 2011, Balestrieri et al. 2011). Besides insects, *M. flavigula* fed a beehive because of its fondness for honey (Lekagul and McNeely 1977, Payne et al. 1985). These results are in accordance with our expectation that insects are eaten by martens because they are easy to forage for and are available all year round. According to Zhou et al. (2011),

martens feed on fruits despite their relatively low protein content because fruits can be easily procured relative to time and effort invested to forage for mammals. Similarly, martens meet their protein requirements by consuming insects during the periods of food shortages.

We found that insects occupied a smaller fraction in *M. flavigula* feces (<10%) than vertebrates and fruits. Hymenoptera are generally dominated by Apoidea or wide bees (Roberts 1977, Zhou et al. 2011). However, we found that *M. flavigula* primarily preys on social wasps, including hornets and yellow jackets, together with their nest materials. This is probably because social insects can supply sufficient food for *M. flavigula*, which would be impossible with solitary insects. There are hundreds to thousands of larvae, pupae and adults in the nests of social wasps, which are high in protein (Matsuura and Yamane 1990). As we expected, *V. simillima simillima* was the most important food resource for *M. flavigula* since their nests are attached to tree branches where the nests are usually

Table 2. Variations in *Martes flavigula* insects diet by seasons and taxonomic groups, and the interaction effect between variation

Source	Sum of square	df	Mean square	F	P
Season	248.06	3	82.69	2.08	0.092
Taxonomic groups	506.73	3	168.91	4.25	0.007
Interaction	946.69	9	105.19	2.65	0.016
Residual	1271.3	32	39.73		
Total	2972.8	47			

found by martens. *Vespa crabro*, *V. ducalis*, *V. analis*, and *Vespa* species usually build their nests in tree crevices, tree branches or bushes, or underground (at a depth of 10-20 cm) (Matsuura and Yamane 1990), where they are also accessible to *M. flavigula*. However, most Vespidae species have a strong venomous sting, which is very dangerous against animals. *M. flavigula* has a strategy to minimize the exposure to Vespidae stings. Fig. 5 shows that the numbers of Coleoptera, Orthoptera, and Hymenoptera captured by *M. flavigula* were low in summer and early autumn (September) when sufficient prey is available. However, the amounts of Hymenoptera captured increased dramatically in October and peaked in November. The life cycle of the Vespidae begins with a queen building an embryo nest in early spring (Matsuura and Yamane 1990). The first workers continue nest building in June, and the nest then grows rapidly. The nest size is maximal in August and September, when large numbers of aggressive workers are sufficient to protect it from predators. New reproductives are produced after September; however, at that time males do not have a venomous sting and queens are less aggressive than workers. Therefore, it seems that *M. flavigula* frequently attacks the nests of social wasps in late autumn when the amount of larvae and adults increases and their aggressive behavior is reduced. Because prey is insufficient in winter and early spring, *M. flavigula* forages easily on overwintered new queens found in tree crevices or underground, embryo nests, and beehives. Unlike Vespidae, however, the remains of honeybees were not found in the feces; therefore, *M. flavigula* presumably eats honey but not honeybees. Although this study could not fully address the mechanism of *M. flavigula* foraging, it should be studied in the future.

LITERATURE CITED

- Archer ME. 2012. Vespine wasps of the world: behaviour, ecology & taxonomy of the Vespinae. Siri Scientific Press, Manchester.
- Balestrieri A, Remonti L, Ruiz-González A, Vergara M, Capelli E, Gómez-Moliner BJ, Prigioni C. 2011. Food habits of genetically identified pine marten (*Martes martes*) expanding in agricultural lowlands (NW Italy). *Acta Theriol* 56: 199-207.
- Buskirk SW. 1994. Introduction to the Genus *Martes*. In: Martens, sables, and fishers: biology and conservation (Buskirk SW, Harestad AS, Raphael MG, Powell RA, eds). Cornell University Press, Ithaca, NY, pp 1-10.
- Choi T, Woo D, Cho B, Lee S, Yang B, Kim M, Yang D, Choi D. 2010. Management of ecological corridor to conserve wildlife population (II). National Institute of Environmental Research, Incheon, p 26.
- Choi T, Woo D, Lee S, Kim S, Lee J, Yang B, Jeong W. 2012. Endangered wildlife research to conserve ecological corridor. National Institute of Environmental Research, Incheon, p 31.
- Choi T, Woo D, Yang B, Kim M, Lee S, Jeong W, Choi D. 2011. Management of ecological corridor to conserve wildlife population (III). National Institute of Environmental Research, Incheon, p 29.
- Choi T, Yang B, Woo D, Yoo B, Lee S, Choi D, Choi C, Lee BK. 2009. Management of ecological corridor to conserve wildlife population (I). National Institute of Environmental Research, Incheon, p 97.
- Clevenger AP. 1993. Pine marten (*Martes martes* Linné, 1758) comparative feeding ecology in an island and mainland population of Spain. *Z Säugetierkd* 58: 212-224.
- Clevenger AP. 1994. Feeding ecology of Eurasian pine martens and stone martens in Europe. In: Martens, sables, and fishers: biology and conservation (Buskirk SW, Harestad AS, Raphael MG, Powell RA, eds). Cornell University Press, Ithaca, NY, pp 326-340.
- De Marinis AM, Masseti M. 1995. Feeding habits of the pine marten *Martes martes* L., 1758, in Europe: a review. In: Proceedings II Italian symposium on carnivores (Prigioni C ed). *Hystrix* 7: 143-150.
- Grassman LI, Tewes ME, Silvy NJ. 2005. Ranging, habitat use and activity patterns of binturong *Arctictis binturong* and yellow-throated marten *Martes flavigula* in north-central Thailand. *Wildl Biol* 11: 49-57.
- Hammer Ø, Harper DAT, Ryan PD. 2001. PAST: Paleontological Statistics Software Package for Education and Data Analysis. *Palaeontologia Electronica*. 4: 1-9. http://palaeo-electronica.org/2001_1/past/issue1_01.htm. Accessed 5 March 2015.
- Harrison DJ, Fuller AK, Proulx G. 2004. Martens and fisher (*Martes*) in human-altered environments: an international perspective. Kluwer Academic Publishers, Norwell.
- IUCN Red List. 2014. The IUCN Red List of Threatened Species. <http://www.iucnredlist.org/details/41649/0>. Accessed 5 March 2015.
- Jedrejewski B, Jedrejewski W. 1998. Predation in vertebrate communities: the Bialowieza Primeval Forest as a Case Study. Springer-Verlag, Berlin.
- Kim JK, Choi MB, Moon TY. 2006. Occurrence of *Vespa velutina* Lepeletier from Korea, and a revised key for Korean *Vespa* species (Hymenoptera: Vespidae). *Entomol Res* 36: 112-115.

- Lekagul B, McNeely JA. 1977. Mammals of Thailand. 1st Ed. Kurusapha Press, Bangkok.
- Marchesi P, Mermod C. 1989. Regime alimentaire de la marte (*Martes martes* L.) dans de Jura Suisse (Mammalia: Mustelidae). Rev Suisse Zool 96: 127-146.
- Matsuura M, Yamane S. 1990. Biology of the Vespine wasps. Springer-Verlag, Berlin.
- Nowak RM. 1999. Walker's Mammals of the World. Johns Hopkins University Press, Washington, DC.
- Parr JWK, Duckworth JW. 2007. Notes on diet, habituation and sociality of yellow-throated marten *Martes flavigula*. Small Carniv Conserv 36: 27-29.
- Payne J, Francis CM, Phillipps K. 1985. A field guide to the mammals of Borneo. The Sabah Society with WWF Malaysia, Kota Kinabalu.
- Prater SH. 1971. The book of Indian animals. 3rd Ed (as updated 1993). Bombay Natural History Society and Oxford University Press, Mumbai.
- Proulx G, Aubry K, Birks J, Buskirk S, Fortin C, Frost H, Krohn W, Mayo L, Monakhov V, Payer D, Saeki M, Santos-Reis M, Weir R, Zielinski W. 2004. World distribution and status of the genus *Martes* in 2000. In: Martens and Fishers (*Martes*) in Human-Altered Environments (DJ Harrison, AK Fuller, G Proulx, eds.). Springer, New York, NY, pp. 21-76.
- Roberts TJ. 1977. The mammals of Pakistan. Ernest Benn Limited, London.
- Yamane SK, Wagner RE, Yamane S. 1980. A tentative revision of the subgenus *Paravespula* of eastern Asia (Hymenoptera: Vespidae). Insecta Matsumurana 19: 1-46.
- Zhou YB, Newman C, Buesching CD, Zalewski A, Kaneko Y, Macdonald DW, Xie ZQ. 2011. Diet of an opportunistically frugivorous carnivore, *Martes flavigula*, in subtropical forest. J Mamm 92: 611-619.
- Zhou YB, Newman C, Xu WT, Buesching CD, Zalewski A, Kaneko Y, Macdonald DW, Xie ZQ. 2010. Biogeographical variation in the diet of Holarctic martens (genus *Martes*, Mammalia: Carnivora: Mustelidae): adaptive foraging in generalists. J Biogeogr 38: 137-147.
- Zhou YB, Slade E, Newman C, Wang XM, Zhang SY. 2008. Frugivory and seed dispersal by the yellow-throated marten, *Martes flavigula*, in a subtropical forest of China. J Trop Ecol 24: 219-223.