

neuroma, surgical resection can result in complete pain relief. A heightened awareness of the diagnosis and management of neuroma is very important, since this is a treatable cause of pain. When having a consultation about chronic pain after LD breast reconstruction, surgeons should always keep in mind that this is a complex and heterogenous condition for both diagnosis and treatment. Thoracodorsal neuroma should be considered as a possible cause.

References

1. Andersen KG, Kehlet H. Persistent pain after breast cancer treatment: a critical review of risk factors and strategies for prevention. *J Pain* 2011;12:725-46.
2. Ducic I, Seiboth LA, Iorio ML. Chronic postoperative breast pain: danger zones for nerve injuries. *Plast Reconstr Surg* 2011;127:41-6.
3. Kaariainen M, Giordano S, Kauhanen S, et al. No need to cut the nerve in LD reconstruction to avoid jumping of the breast: a prospective randomized study. *J Plast Reconstr Aesthet Surg* 2014;67:1106-10.
4. Mavrogenis AF, Pavlakis K, Stamatoukou A, et al. Current treatment concepts for neuromas-in-continuity. *Injury* 2008;39 Suppl 3:S43-8.
5. Paolini G, Longo B, Laporta R, et al. Permanent latissimus dorsi muscle denervation in breast reconstruction. *Ann Plast Surg* 2013;71:639-42.

Rice Body Tenosynovitis without Tuberculosis Infection after Multiple Acupuncture Procedures in a Hand

Seung Eun Hong, Ji-Hyun Pak, Hyun Suk Suh, So-Ra Kang, Bo Young Park

Department of Plastic Surgery, Ewha Womans University Mokdong Hospital, Ewha Womans University School of Medicine, Seoul, Korea

Correspondence: Bo Young Park

Department of Plastic Surgery, Ewha Womans University Mokdong Hospital, Ewha Womans University School of Medicine, 1071 Anyangcheon-ro, Yangcheon-gu, Seoul 158-710, Korea

Tel: +82-2-2650-5149, Fax: +82-2-3410-0036, E-mail: byps@icloud.com

No potential conflict of interest relevant to this article was reported.

Received: 4 Mar 2015 • Revised: 2 Apr 2015 • Accepted: 18 Apr 2015

pISSN: 2234-6163 • eISSN: 2234-6171

<http://dx.doi.org/10.5999/aps.2015.42.4.502> • *Arch Plast Surg* 2015;42:502-505

Copyright © 2015 The Korean Society of Plastic and Reconstructive Surgeons

This is an Open Access article distributed under the terms of the Creative Commons Attribution Non-Commercial License (<http://creativecommons.org/licenses/by-nc/3.0/>) which permits unrestricted non-commercial use, distribution, and reproduction in any medium, provided the original work is properly cited.

Rice body is an uncommon condition first described in 1895 and associated with tuberculosis tenosynovitis [1]. Resembling rice, the lesion has been called rice body, melon seed, and millet seed, and is encountered as a manifestation of rheumatoid disorders or tuberculosis [1]. In areas where tuberculosis is endemic, rice body tenosynovitis is related to a typical manifestation of extra-pulmonary

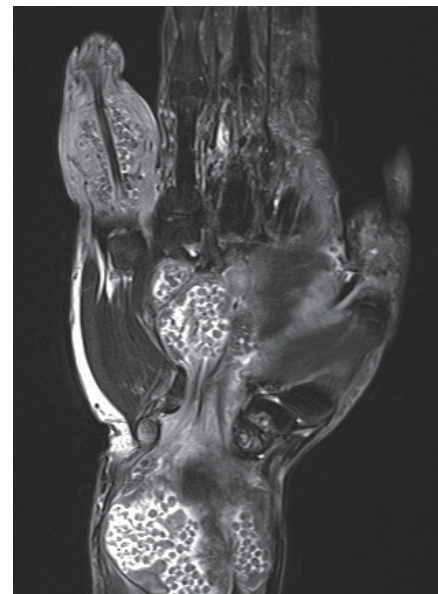


Fig. 1.

A magnetic resonance imaging scan revealed a wrist mass centered on the flexor tendon group and the extensor carpi ulnaris tendon, a mass that connected with the wrist mass, and a finger mass around the flexor digitorum profundus and the superficialis and extensor digiti minimi tendons with rice body tenosynovitis.

tuberculosis. Herein, we describe a rare case of rice body tenosynovitis in a hand that showed no evidence of any infections or rheumatic diseases after repetitive diagnostic procedures.

An 80-year-old male presented with enlarging masses in his left wrist, palm, and the fifth finger complaining of repetitive open wounds. The patient had no relevant medical history except a gouty attack 10 years previously. The mass first appeared in the wrist area after an acupuncture procedure following a wrist sprain 3 years previously. The mass slowly enlarged over these 3 years, and new lesions appeared on his palm and the fifth finger. His acupuncture procedure was not discontinued because of his belief that it might be helpful in removing the masses. He had fully active range of motion except in his fifth finger and no sensory change occurred. The open wound showed a wax-and-wane course during the procedure. A magnetic resonance imaging (MRI) scan revealed a wrist mass measuring 5.5 cm × 5 cm × 5.5 cm centered on the flexor tendon group and extensor carpi ulnaris tendon, a palm mass measuring 4.2 cm × 3 cm × 3.5 cm connected with the wrist mass, and a mass measuring 2.5 cm × 2.5 cm × 2.5 cm around the flexor digitorum profundus and the superficialis and extensor digiti minimi tendons with rice body tenosynovitis (Fig. 1). The differential diagnosis included tuberculosis tenosynovitis, rheumatoid tenosynovitis, and villonodular synovitis. An incisional biopsy through open wounds showed multiple ovoid nodules—so called rice bodies—and a histopathological examination reported chronic

inflammation suspected to be a ganglion while ruling out sarcoma and giant cell tumor. A wound culture including bacteria, tuberculosis, and fungus showed an infection of *Enterococcus faecalis* and negative results to tuberculosis and fungus, so preoperative antibiotics were started. Complete wide excision was scheduled under regional anesthesia. Encapsulated shiny corpuscles filled with rice bodies were found surrounding the common flexor tendon sheath and extending distally to the palm through the carpal tunnel (Fig. 2). A similar mass was found on the fifth finger with a thickened flexor profundus and superficialis tendon sheath. The encapsulated masses, including the scattered rice bodies and thickened tendon sheath, were totally removed (Fig. 3). Neurovascular structures were carefully preserved. The histopathological examination showed nonspecific chronic inflammation without non-caseous necrosis. Repetitive acid-fast bacilli reactions, tuberculosis polymerase chain reaction (PCR) tests of the tissue and blood in triplicate, and additional Quanti-FERON Tb Gold (Celletis, Melbourne, Australia) in the blood all showed negative results. Evaluation for rheumatoid arthritis revealed a normal range of rheumatoid factor. Thus, we diagnosed “non-specific tenosynovitis,” which did not meet the criteria for rheumatoid disease or tuberculosis tenosynovitis. The postoperative course was uneventful except for mild inflammation at the incision site (Fig. 4). It was resolved with antibiotics, and the patient showed full range of motion and normal sensory capacity after surgery. There was no



Fig. 2. Encapsulated shiny corpuscles filled with rice bodies were found surrounding the common flexor tendon sheath.



Fig. 3. Removed masses with multiple rice bodies: a wrist mass measuring 9 cm × 7 cm, a palm lesion measuring 2 cm × 5 cm, and a finger corpuscle measuring 1 cm × 5 cm and containing scattered rice bodies were removed.



Fig. 4.
Postoperative view.

recurrence at the one-year follow-up.

Rice body tenosynovitis is, rarely, reported in small case series although tuberculous tenosynovitis is relatively frequent and occurs in approximately 1% to 3% of patients with tuberculosis in endemic areas [2,3]. Rice bodies are non-specific findings in chronic inflammation that arise from microinfarctions with synovial shedding encapsulated by fibrin [4] and can be well observed with MRI in T1- and T2-weighted images as specific ovoid-shaped nodules of iso- or hypointense density [5].

Clinical manifestations differ depending on etiologies. In rheumatic disease, rice body tenosynovitis presents mainly in the knee joints and tendon thickness, and signal changes or ruptures frequently accompany the associated bone and joint deformities. In contrast to rheumatic disease, tuberculous tenosynovitis does not show tendon thickness or rupture and involves small joints [4].

The histological evaluation should be performed for diagnosis in addition to clinical manifestations; multiple caseating granulomas surrounded by epithelioid histiocytes and multinucleated giant cells are typical findings, but a lack of granulomas or non-caseating granulomas is sometimes observed. Further, tissue stains for acid-fast bacilli, culture for tuberculosis, and PCR should be performed. Failure to determine the etiology, leading to a diagnosis of “non-specific” tenosynovitis, is extremely rare [3].

Since our patient had a history of multiple acupuncture treatments, we initially suspected tuberculosis or atypical mycobacterial infection based on frequent reports and clinical experiences in Asia. However, the patient’s medical history, histopathological findings, PCR of the tissue and blood performed in triplicate, and repetitive cultures

all excluded tuberculosis, and the etiology, in the end, remained unknown.

Complete excision including tenosynovectomy is essential even in “non-specific” rice body tenosynovitis. To prevent surgical complications, such as motor restriction or sensory changes, careful dissection should be undertaken. In the case of tuberculous tenosynovitis, more than 50% of the patients saw recurrence within 1 year. Medical therapy should therefore be used initially because of the long duration of culture growth among mycobacteria.

In conclusion, we experienced a rare case of rice body formation with unknown etiology, including large multiple mass-like lesions involving both the flexor and the extensor groups in the absence of any symptoms. Even though we should keep tuberculosis tenosynovitis in mind when rice body formation is found in endemic areas, the etiology cannot be tuberculosis and remains unknown despite repetitive diagnostic procedures. However, further studies are necessary for a better understanding of pathogenesis to establish an early treatment of disease.

References

1. Forse CL, Mucha BL, Santos ML, et al. Rice body formation without rheumatic disease or tuberculosis infection: a case report and literature review. *Clin Rheumatol* 2012;31:1753-6.
2. Kotwal PP, Khan SA. Tuberculosis of the hand: clinical presentation and functional outcome in 32 patients. *J Bone Joint Surg Br* 2009;91:1054-7.
3. Ergun T, Lakadamyali H, Aydin O. Multiple rice body formation accompanying the chronic nonspecific tenosynovitis of flexor tendons of the wrist. *Radiat Med*

2008;26:545-8.

4. Cheung HS, Ryan LM, Kozin F, et al. Synovial origins of Rice bodies in joint fluid. *Arthritis Rheum* 1980;23:72-6.
5. Nagasawa H, Okada K, Senma S, et al. Tenosynovitis with rice body formation in a non-tuberculosis patient: a case report. *Ups J Med Sci* 2009;114:184-8.

Foreign-Body Granuloma after Metacarpal Fracture Treatment with Absorbable Implants

Jung-Sik Choi, Jung-Ho Lee, Sue-Min Kim, Young-Jin Kim, Young-Joon Jun

Department of Plastic and Reconstructive Surgery, Bucheon St. Mary's Hospital, College of Medicine, The Catholic University of Korea, Seoul, Korea

Correspondence: Young-Joon Jun

Department of Plastic and Reconstructive Surgery, Bucheon St. Mary's Hospital, College of Medicine, The Catholic University of Korea, 327 Sosa-ro, Wonmi-gu, Bucheon 420-717, Korea
Tel: +82-32-340-7062, Fax: +82-32-340-7062
E-mail: joony@catholic.ac.kr

No potential conflict of interest relevant to this article was reported.

Received: 6 Mar 2015 • Revised: 10 Apr 2015 • Accepted: 24 Apr 2015
pISSN: 2234-6163 • eISSN: 2234-6171
<http://dx.doi.org/10.5999/aps.2015.42.4.505> • Arch Plast Surg 2015;42:505-507

Copyright © 2015 The Korean Society of Plastic and Reconstructive Surgeons
This is an Open Access article distributed under the terms of the Creative Commons Attribution Non-Commercial License (<http://creativecommons.org/licenses/by-nc/3.0/>) which permits unrestricted non-commercial use, distribution, and reproduction in any medium, provided the original work is properly cited.

The treatment of unstable fractures or complex injuries of the hand frequently requires the implementation of rigid internal fixation. Traditionally, metallic implants have been used to achieve stability. However, the complication rates of metallic implants are high, with major complications reported in 36% of the patients considered in a series [1]. These complications included nonunion, delayed union, stiffness, plate palpation, infection, and tendon rupture. Therefore, bioabsorbable implants have been introduced to reduce these problems. The first-generation bioabsorbable implants showed a high complication rate due to weak mechanical properties and rapid degradation. This led to the development of stronger devices with improved durability. However,

recently developed implants have raised concerns about late-occurring adverse reactions such as foreign body reactions. Herein, a case of foreign body granuloma after the use of an absorbable implant will be presented with a brief literature review.

A 30-year-old male visited Bucheon St. Mary's hospital with a swelling on his left hand after a slip-and-fall injury. He was diagnosed with a left fifth metacarpal bone fracture by hand computed tomography (CT) and X-rays (Fig. 1). The first operation was performed 8 days after the injury, and open reduction was performed. To stabilize the fracture segments, a bioabsorbable plate and screws (Linvatec Biomaterials Ltd., Tampere, Finland) were used for internal fixation. Although the 1-year follow-up was uneventful, the patient visited us with swelling on the previous operation site. Physical exam showed just the swelling of the soft tissue of the operation site without any fluctuation, heat, or erythema. We recommended further evaluation such as an imaging study, but the patient refused to undergo it. Therefore, we decided to observe the patient without administering any medication because there was no evidence of infection. Four months later, the patient visited us again because of another trauma at the same site. Physical examination, CT, and X-rays were conducted, and the patient was diagnosed with a refracture of the fifth metacarpal bone with increased soft tissue swelling as compared to when we first noticed it 4 months previously (Figs. 2, 3). We



Fig. 1. Preoperative X-ray of the first fracture event. The X-ray shows the fracture of the fifth metacarpal bone shaft of the left hand (red circle).