



## Natural Lactic Acid Bacteria Population and Silage Fermentation of Whole-crop Wheat

Kuikui Ni<sup>a</sup>, Yanping Wang<sup>a</sup>, Yimin Cai<sup>1</sup>, and Huili Pang<sup>\*</sup>

Henan Provincial Key Laboratory of Ion Beam Bio-engineering, Zhengzhou University, Zhengzhou 450000, China

**ABSTRACT:** Winter wheat is a suitable crop to be ensiled for animal feed and China has the largest planting area of this crop in the world. During the ensiling process, lactic acid bacteria (LAB) play the most important role in the fermentation. We investigated the natural population of LAB in whole-crop wheat (WCW) and examined the quality of whole-crop wheat silage (WCWS) with and without LAB inoculants. Two *Lactobacillus plantarum* subsp. *plantarum* strains, Zhengzhou University 1 (ZZU 1) selected from corn and forage and grass 1 (FG 1) from a commercial inoculant, were used as additives. The silages inoculated with LAB strains (ZZU 1 and FG 1) were better preserved than the control, with lower pH values (3.5 and 3.6, respectively) ( $p < 0.05$ ) and higher contents of lactic acid (37.5 and 34.0 g/kg of fresh matter (FM), respectively) ( $p < 0.05$ ) than the control. Sixty LAB strains were isolated from fresh material and WCWS without any LAB inoculation. These LAB strains were divided into the following four genera and six species based on their phenotypic, biochemical and phylogenetic characteristics: *Leuconostoc pseudomesenteroides*, *Leuconostoc citreum*, *Weissella cibaria*, *Lactococcus lactis* subsp. *lactis*, *Lactobacillus buchneri*, and *Lactobacillus plantarum* subsp. *plantarum*. However, the prevalent LAB, which was predominantly heterofermentative (66.7%), consisted of *Leuconostoc pseudomesenteroides*, *Leuconostoc citreum*, *Weissella cibaria*, and *Lactobacillus buchneri*. This study revealed that most of isolated LAB strains from control WCWS were heterofermentative and could not grow well at low pH condition; the selective inoculants of *Lactobacillus* strains, especially ZZU 1, could improve WCWS quality significantly. (**Key Words:** Whole-crop Wheat Silage (WCWS), Lactic Acid Bacteria, Fermentation Quality, 16S rDNA, *recA* Gene)

### INTRODUCTION

Winter wheat (*Triticum aestivum* L.) is one of the most popular crops in the world, including China, which is the largest producer that produced almost 111 million tons of this crop every year in the world. The North Plain, especially the Henan Province, producing about two-thirds of the total wheat production, is the most important winter wheat growing area in China (Lu et al., 2013). As the crop can be grown in a wide range of climates and soil conditions, and has relative high contents of dry matter (DM) and water soluble carbohydrate (WSC) which could improve ensiling process. Some countries, such as northern Europe, began to explore the feeding value as the whole-crop wheat silage

(WCWS) (Ashbell et al., 1985; Adamson et al., 1992; Ashbell et al., 1997). The study of Wang et al. (2013) found that the alternative of corn silage to WCWS had a tendency to raise milk production of cows. The crude protein content of silage prepared with whole-crop wheat (WCW) in milk-ripe stage was 1% to 2% higher than that of whole corn silage, while neutral detergent fiber (NDF) and acid detergent fiber (ADF) were close. With the improvement of people's living standard and the adjustment of economic structure, some areas in North China are transforming traditional farming pattern to the cultivating crops for livestock; besides, some wheat with relatively poor quality is not suitable for making food. Therefore, it is necessary for us to investigate the potential ability to develop the WCWS in China.

Ensiling is the most commonly preservation method for forage crop and is fermented by a complex consortium of microorganisms, predominantly LAB, which convert WSC into sufficient organic acids, mainly lactic acid, under anaerobic condition. As a result, pH decreases and

\* Corresponding Author: Huili Pang, E-mail: pang@zzu.edu.cn

<sup>1</sup> National Institute of Livestock and Grassland Science, Tsukuba, Ibaraki 305-0901, Japan.

<sup>a</sup> These two authors contributed equally to this article.

Submitted Dec. 22, 2014; Revised Jan. 27, 2015; Accepted Mar. 2, 2015

undesirable microorganisms are inhibited (Cai, 1999; Pang et al., 2012). Many LAB inoculants and chemical additives have been developed, because LAB inoculants are safe and easy to apply, non-corrosive to machine, do not pollute the environment and are regarded as natural products (Filya et al., 2000). Thus, many LAB-containing additives, which include *Lactobacillus (L.) plantarum*, *L. rhamnosus*, *L. acidophilus*, *Pediococcus acidilactici*, and *Enterococcus faecium* have been developed and are available (Cai et al., 1998). For example, Xie et al. (2012) found inoculating *Lactobacillus parafarraginis* could enhance the aerobic stability of wheat silages at different maturity. These inoculants may involve accelerating the process of silage fermentation and dominating lactic acid fermentation.

To our knowledge, from microbiological perspective, little information is available on the microbial ecology of fresh wheat material, especially the inhabited LAB, which determines whether inoculant needs to be used. Therefore, the present study was to investigate the microorganism constitution of fresh wheat material and control WCWS, identify isolates with physiological and biochemical test, and determine selected representative strains at the molecular level using 16S rRNA and *recA* sequence analysis

## MATERIALS AND METHODS

### Silage preparation and microbiological analysis

The whole crop wheat (Yumai 19) was collected at the milk stage from a farmland in Henan Province, China in the May, 2012. Two *L. plantarum* subsp. *plantarum* strains Zhengzhou University 1 (ZZU 1) isolated from corn and forage and grass 1 (FG 1) from a commercial inoculant (Chikuso-1) were used, and they were incubated in lactobacilli de Man, Rogosa, Sharpe (MRS) broth overnight. After incubation, the optical density of the suspension at 700 nm was adjusted to 0.40 using sterile 0.85% NaCl solution just before ensiling. Then 100  $\mu$ L diluted LAB solution per 100 gram of fresh matter (FM) was applied. Silages were prepared using a small scale system, approximately 100 g portions of forage material chopped into about 20-mm length and packed into plastic bags (N-9, Asahi Kasei Co., Ltd., Tokyo, Japan). Experimental treatments included: control silage without LAB, the WCW+FG 1 silage and WCW+ZZU 1 silage. The bag silos were vacuumized and sealed with Sharp Vacuum Seal/Package (SQ-202, Sharp Co., Ltd., Tokyo, Japan). Eight bags per treatment were made. The plastic bags were stored at room temperature (28.0°C to 35.0°C) and three bags on day 30 of each treatment were opened for evaluations of silage fermentation.

The samples (10 g) were blended with 90 mL of sterilized water, and serially diluted from  $10^{-1}$  to  $10^{-5}$  in sterilized water. The number of LAB was measured by plate count on MRS agar incubated at 30°C for 48 h under anaerobic conditions

(DG 250/min MACS; Don Whitley Science, Shipley, England). Coliform bacteria were counted on blue light broth agar (Nissui-Seiyaku Co., Ltd., Tokyo, Japan), incubated at 30°C for 48 h. Molds and yeasts were counted on potato dextrose agar (Nissui-Seiyaku Ltd., Japan), incubated at 30°C for 24 h, and yeasts were distinguished from molds and other bacteria by colony appearance and the observation of cell morphology. Bacilli and aerobic bacteria were counted on nutrient agar (Nissui Ltd., Japan), incubated at 30°C for 24 h under aerobic conditions. Colonies were counted as viable numbers of microorganisms in CFU/g of FM. Three repetitions of each sample were analyzed during the isolation process, and almost all of these from same sample were similar, therefore, one sample data were used in this experiment. Each LAB colony was isolated and purified twice by streaking on MRS agar plates. Pure cultures were grown on MRS agar at 30°C for 24 h, and then the purified strains were stored at -80°C in nutrient broth (Difco) for further examination.

### Morphological, physiological and biochemical tests of lactic acid bacteria

Morphological, physiological and biochemical tests of LAB morphology and Gram-staining response were examined after 24 h of incubation on MRS agar. Catalase activity and gas production from glucose were determined using the methods of Kozaki et al. (1992). The LAB strains producing gas from glucose were regarded as heterofermentative type while the LAB strains producing no gas were regarded as homofermentative type. Growth at different temperatures was observed in MRS broth after incubation at 5°C, 10°C, and 15°C for 14 days, and at 45°C and 50°C for 7 days. Growth at pH 3.0, 3.5, 4.0, 4.5, 5.0, 6.0, and 8.0 was observed in MRS broth after incubation at 30°C for 7 days. Salt tolerance of LAB was tested in MRS broth containing 3.0% and 6.5% NaCl at 30°C for 2 days. Carbohydrate assimilation and fermentation of 49 compounds with one control were identified on Analytic Products INC (API) 50 CH strips (bioMerieux, Tokyo, Japan).

### 16S rRNA gene sequencing and *recA* gene polymerase chain reaction amplification

Cells grown at 30°C for 24 h in MRS agar were used for 16S rRNA gene sequence. The 16S rRNA gene was amplified by polymerase chain reaction (PCR) in a thermal cycler. The sequences of the PCR products were determined directly with a sequencing kit using the prokaryotic 16S ribosomal DNA universal primers 27F (5'-AGAGTTTGATCCTGGCTCAG -3') and 1492R (5'-GGTTACCTTGTTACGACTT-3') (Pang et al., 2011a). Sequence similarity searches were performed using the DNA Database of Japan (DDBJ) and the basic local alignment

search tool. The sequence information was then imported into the Sequencher which contains Clustal X 1.81 software program (Hitachi Software Engineering Co., Tokyo, Japan) for assembly and alignment. The 16S rDNA sequences of ZZU strains were compared with sequences from type LAB strains held in the DDBJ. Nucleotide substitution rates (Kunc values) were calculated and phylogenetic trees were constructed using the neighbor-joining method (Kimura et al., 1972). *Bacillus subtilis* NCDO 1769<sup>T</sup> was used as an outgroup organism. The topologies of trees were evaluated using bootstrap analysis of the sequence data with molecular evolutionary genetic analysis (MEGA) 4 software, based on 1,000 random resampling (Tamura et al., 2007). These sequences were aligned with the type published sequences from DDBJ, GenBank and the European Molecular Biology Laboratory (EMBL).

For further discrimination of strains in the *L. plantarum* group, a multiplex PCR assay was performed with the *recA* gene-based primers: *paraF* (5'-GTCACAGGCATTACGAA AAC-3'), *pentF* (5'-CAGTGGCGCGGTTGATATC-3'), *planF* (5'-CCGTTTATGCGGAACACCTA-3'), and *pREV* (5'-TCGGGATTACCAAACATCAC-3'). The PCR mixture and amplifications were performed as described by Torriani et al. (2001).

The nucleotide sequences for the 16S rDNA described in this report were deposited with GenBank under accession nos. AB30322, AB30323, AB30324, AB30325, AB30326, AB30327 and AB30328 for the strains ZZU 16, ZZU 20, ZZU 23, ZZU 3, ZZU 8, ZZU 12, and ZZU 21, respectively.

#### **Fermentation quality, chemical composition and statistical analysis**

At the 30 day of ensiling, three bags of WCWS per treatment were opened for measuring fermentation quality and chemical composition. The pH was measured with a glass electrode pH meter (pH 213; HANNA, Padova, Italy). The ammonia-N was determined by steam distillation of the filtrates. The organic acid contents were measured by HPLC (1200series; Agilent, Santa Clara, CA, USA) according to the method described by Cai et al. (1999). The WCWS samples were dried in a forced-air oven at 65°C for 48 h and ground to pass a 1-mm screen with a Wiley mill (ZM200, Retsch GmbH, Haan, Germany). Dry matter, ether extract and organic matter were analyzed according to AOAC Methods 934.01, 920.39, and 942.05, respectively (AOAC, 1990). The NDF and ADF were analyzed by the method of Van Soest et al. (1991). Wet silage (10 g) was homogenized with 90 mL sterilized distilled water.

Data on the fermentation quality and chemical composition of the 30 d silages were analyzed by analysis of variance, and the significance of differences among means was tested by the general linear model procedures of SAS (SAS Institute Inc., Cary, NC, USA). The statistical model

included the main factor of treatment (3 levels) and the random factor of silage within treatment. Statistical analysis was performed using one-way analysis of variance with post hoc Duncan test;  $p < 0.05$  was considered significant.

## **RESULTS**

### **The physiological properties and the carbohydrate fermentation patterns of lactic acid bacteria LAB isolated from fresh material and control WCWS**

As shown in Table 1 and 2, all of the LAB strains isolated from the control WCWS were Gram-positive and catalase-negative and could not grow at temperatures below 5°C or above 50°C. No LAB strains could grow both at pH 3.0 and in 6.5% NaCl, except strain ZZU 20. According to the morphological, physiological and biochemical properties, the isolated LAB strains were divided into six groups (A-F). The strains in group A (ZZU 3 and 21) produced acid from galactose, melibiose, trehalose, D-raffinose, and D-turanose and could not grow in 6.5% NaCl, while the strain in group C (ZZU 8) could not ferment those carbohydrates, but could grow in 6.5% NaCl. The group B strain ZZU 16 could not produce acid from ribose or D-xylose, making it different from groups A and C. Unlike the strains in groups A, B, and C, the group D strain (ZZU 12) did not produce gas from glucose and did not grow at pH 4.5. All of the strains in group E (ZZU 23) and group F were rod-shaped, but those in group E were homofermentative, while those in group F were heterofermentative.

### **16S rRNA gene sequencing of representative lactic acid bacteria strains**

Phylogenetic trees of 7 representative strains constructed from evolutionary distances using the neighbour-joining method are shown in Figure 1 and 2. Following the 16S rDNA sequence analysis, the strains in all groups were placed in clusters based on their genera, *Leuconostoc*, *Lactococcus*, *Weissella*, and *Lactobacillus*. Strains in groups A and B were placed in the cluster of *Leuconostoc* (*Ln.*). *Ln. pseudomesenteroides* JCM 9696<sup>T</sup> and *Ln. citreum* JCM 9698<sup>T</sup> were the most closely related species, indicated by a more than 99.7% similarity in their 16S rRNA gene sequences. Therefore, the strains in groups A and B belonged to *Ln. pseudomesenteroides* and *Ln. citreum*, respectively. The representative strain in group C was clearly defined as *Weissella* (*W.*) *cibaria* supported with a 100% bootstrap value. The group D strain was found to be *Lactococcus* (*Lc.*) *lactis* because group D formed a very well-defined cluster with the following three subspecies: *Lc. lactis* subsp. *hordniae*, *Lc. lactis* subsp. *lactis*, and *Lc. lactis* subsp. *cremoris*; the group D strain was further ascribed to the subspecies *lactis* on the phylogenetic tree, with a 100% bootstrap value and 99.9% similarity for the 16S rRNA gene

**Table 1.** Characteristics of isolated LAB strains from the control WCWS

Characteristics	Group A		Group B	Group C	Group D	Group E	Group F
	ZZU 3	ZZU 21	ZZU 16	ZZU 8	ZZU 12	ZZU 23	ZZU 20
No. of isolates	10	8	6	10	8	12	6
Shape	Cocci	Cocci	Cocci	Cocci	Cocci	Rod	Rod
Gram stain	+	+	+	+	+	+	+
Gas from glucose	+	+	+	+	-	-	+
Catalase	-	-	-	-	-	-	-
Fermentation type	Hetero	Hetero	Hetero	Hetero	Homo	Homo	Hetero
Growth at temperature (°C)							
5	-	-	-	-	-	-	-
10	+	w	w	w	w	-	w
15	+	+	+	+	+	+	+
45	-	-	-	-	-	+	+
50	-	-	-	-	-	-	-
Growth at pH							
3.0	-	-	-	-	-	-	+
3.5	w	-	-	-	-	+	+
4.0	w	w	w	w	w	+	+
4.5	+	+	+	+	-	+	+
5.0	+	+	+	+	+	+	+
8.0	+	+	+	+	+	+	+
Growth in NaCl (w/v %)							
3.0	+	+	+	+	+	+	+
6.5	-	-	+	+	-	+	+

LAB, lactic acid bacteria; WCWS, whole-crop wheat silage; ZZU, Zhengzhou University.

Gram stain: +, Gram-positive; -, Gram-negative. Gas from glucose: +, producing gas from glucose; -, no gas produced.

Catalase: +, producing hydrogen peroxide; -, no hydrogen peroxide produced. Growth: +, usual growth; w, weakly growth; -, no growth.

Homo, homofermentative; Hetero, heterofermentative.

sequence supporting its monophyly. The strains of group E and F were all placed in the cluster of *Lactobacillus*; group E strains were grouped on the phylogenetic tree with *L. plantarum* subsp. *plantarum*, *L. plantarum* subsp. *argentoratensis*, *L. pentosus* and *L. paraplantarum*, and the representative strain of group F was identified as *L. buchneri*, with 99.8% similarity for the 16S rRNA gene sequence. In the fresh matter, only *W. cibaria* was found.

#### Amplification products obtained from the *recA* gene multiplex assay

Amplification products obtained from the *recA* gene of the representative strains of group E and the type strain are shown in Figure 3. The group E strains and *L. plantarum* subsp. *plantarum* JCM 1149<sup>T</sup> produced 318 bp products. Thus, all of the group E strains were clearly identified as *L. plantarum* subsp. *plantarum*.

#### The microbiological composition, fermentation quality and chemical composition of WCWS after 30 days of fermentation

The microbiological composition of silages after 30 days of fermentation are shown in Table 3. The numbers of coliform bacteria in the treated silages decreased to a low

level and were too few (<10<sup>3</sup> colony-forming unit [CFU]/g) to count after 30 days of fermentation. The counts of aerobic bacteria and yeasts decreased to a lower level (10<sup>4</sup> CFU/g) than that in the control. Table 4 shows the fermentation quality and chemical composition of the silages after 30 days of fermentation. Propionic acid and n-Butyric acid were below the detectable level (0.01 g/kg of FM) in all of the silages. Compared with the control, the silages inoculated with LAB (ZZU 1 and FG 1) were preserved well with relatively lower pH values (3.5 and 3.6, respectively) and higher lactic acid contents (37.5 and 34.0 g/kg of FM, respectively) (p<0.05). In addition, the DM for the ZZU 1-treated silage was higher (p<0.05) than that for the control, and the DM for the FG 1-treated silage was not significantly higher than that for the control (p<0.05).

## DISCUSSION

Wheat is cultivated beyond 240 million hectares, larger than any other crops in the developing country. As one of the top producers of world, China's share is almost one-sixth of the world production of wheat (Weinberg et al., 2010). Wheat is becoming more and more popular to be used as silage in the world, and there are some advantageous characteristics

**Table 2.** API 50 CH fermentation patterns of isolated LAB from the control WCWS

Items	Group A		Group B	Group C	Group D	Group E	Group F	JCM		
	ZZU 3	ZZU 21	ZZU 16	ZZU 8	ZZU 12	ZZU 23	ZZU 20	5805 <sup>T</sup>	16167 <sup>T</sup>	1180 <sup>T</sup>
L-Arabinose	+	+	+	+	-	+	+	-	-	-
Ribose	+	w	-	+	+	+	+	+	-	-
D-Xylose	+	+	-	+	+	-	+	+	-	-
Galactose	+	+	-	-	+	+	+	+	+	-
D-Glucose	+	+	+	+	-	+	+	-	-	-
D-Fructose	+	+	+	+	-	+	+	-	-	-
D-Mannose	+	+	+	+	+	+	+	+	+	+
Mannitol	-	-	-	-	+	+	-	+	-	-
Sorbitol	-	-	-	-	-	+	-	-	-	-
$\alpha$ -Methyl-D-mannoside	-	-	-	-	-	+	-	-	-	-
$\alpha$ -Methyl-D-glucoside	+	+	w	-	-	-	+	-	-	-
N-acetyl glucosamine	+	w	+	w	+	+	w	-	-	-
Amygdaline	-	-	+	+	+	+	+	+	-	-
Arbutine	-	w	w	w	+	+	w	+	-	+
Esculine	-	-	-	-	+	+	-	+	-	+
Salicine	+	w	+	w	+	+	w	+	-	+
Cellobiose	+	+	+	+	+	+	+	+	-	+
Maltose	+	+	+	+	+	+	+	-	-	-
Lactose	-	w	-	-	+	+	w	+	+	-
Melibiose	+	+	-	-	+	+	+	+	+	-
Saccharose	+	+	w	+	-	+	+	-	-	+
Trehalose	+	+	+	-	+	+	+	+	-	+
Melezitose	-	-	-	-	-	+	+	-	-	-
D-Raffinose	+	+	-	-	-	w	+	-	-	-
Starch	w	-	-	-	w	-	-	-	-	-
$\beta$ -Gentiobiose	w	w	w	-	+	+	w	w	-	-
D-Turanose	+	+	+	-	-	+	+	w	-	-
D-Arabitol	-	-	-	-	-	w	-	-	-	-
Gluconate	-	-	w	w	w	+	-	w	w	w
5-ceto-gluconate	-	-	w	-	-	-	-	-	-	-

API, Analytic Products INC; LAB, lactic acid bacteria; WCWS, whole-crop wheat silage; JCM, Japan Collection of Microorganisms; ZZU, Zhengzhou University; <sup>T</sup>, Type strains.

+, fully assimilated; w, partly assimilated; -, negatively assimilated.

JCM 5850<sup>T</sup>, *Lactococcus lactis* subsp. *lactis*; JCM 16167<sup>T</sup>, *Lactococcus lactis* subsp. *cremoris*; JCM 1180<sup>T</sup>, *Lactococcus lactis* subsp. *hordniae*.

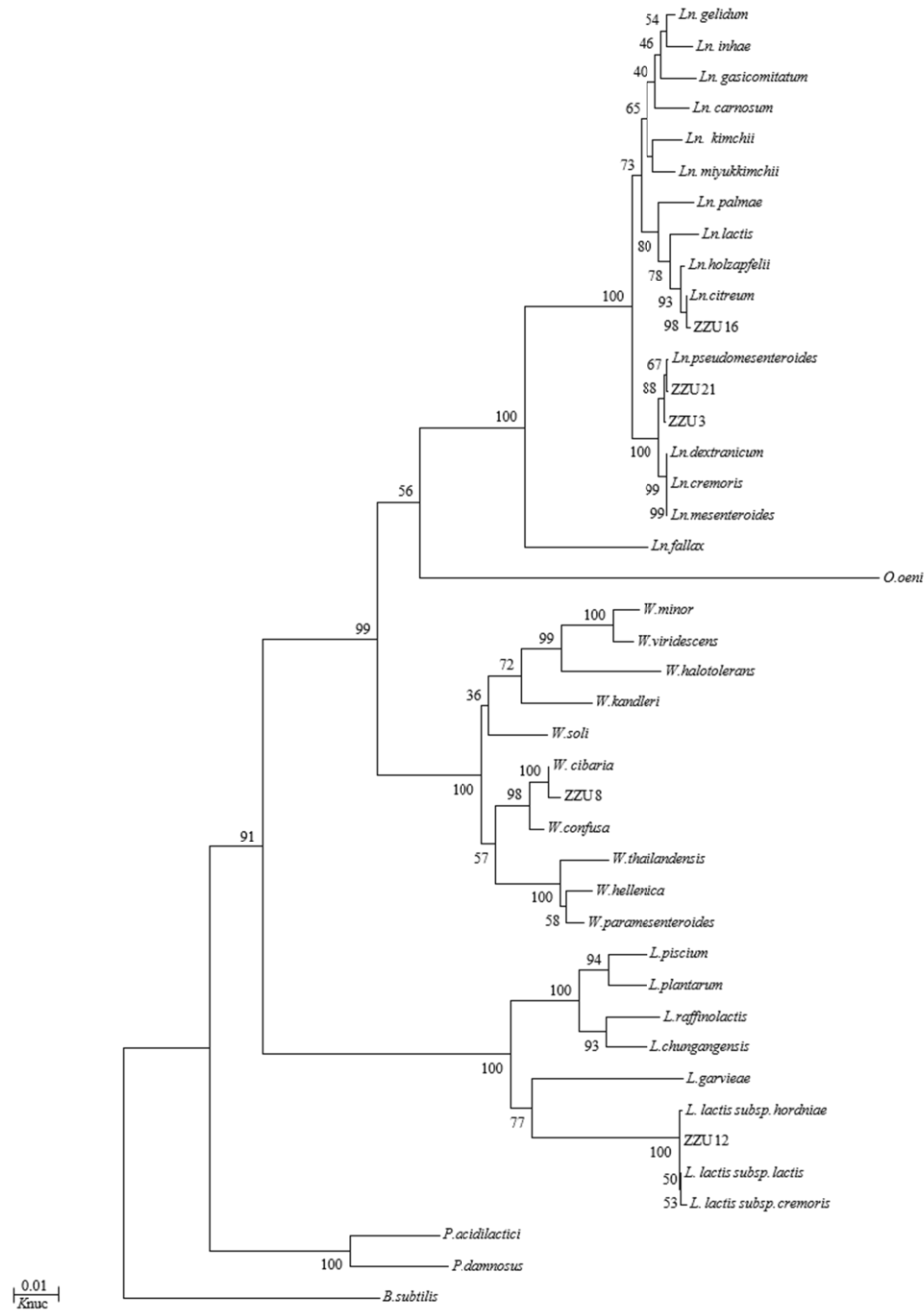
The rest of carbohydrates were not fermented by all the isolated strains and not listed.

of wheat as a forage crop: it can adapt different kinds of soils and climate conditions; the moisture is adequate for ensiling when it is harvested in the spring; if wheat is ensiled properly with other crop grains, it can increase milk production. In addition, with the increasing price of corn caused by biofuel production, wheat silage could be an alternative to corn silage (Weinberg et al., 2009). The fermentation process of LAB for several forage crops and grasses have been described (Cai, 1999). This study provides a unique opportunity to investigate microbial flora of wheat silage, and study the effects of fermentation quality and chemical composition on the wheat silage by LAB inoculant.

In order to reproduce the fermentation process and exactly analyze fermentation quality, a small-scale fermentation method was developed (Tanaka et al., 1995).

This method employs about 100 to 1,000 g of portions of forage material to pack into plastic bag silo, then the bag silo was sealed with a vaccum sealer. The plastic silo was made by using the laminated plastic film of nylon and polyethylene and silage prepared with this method can store well more than one year (Cao et al., 2011; Chen et al., 2013). This method can reproduce the silage fermentation process, and greatly contribute to the study of silage fermentation principle. In addition, in some comparative tests of silage fermentation using various silo, the results of silage fermentation by using small-scale fermentation method were same or similar (not significantly) to other silo methods such as bottle, jar, role bale, and bunk silo (Tanaka et al., 1995; Müller, 2005).

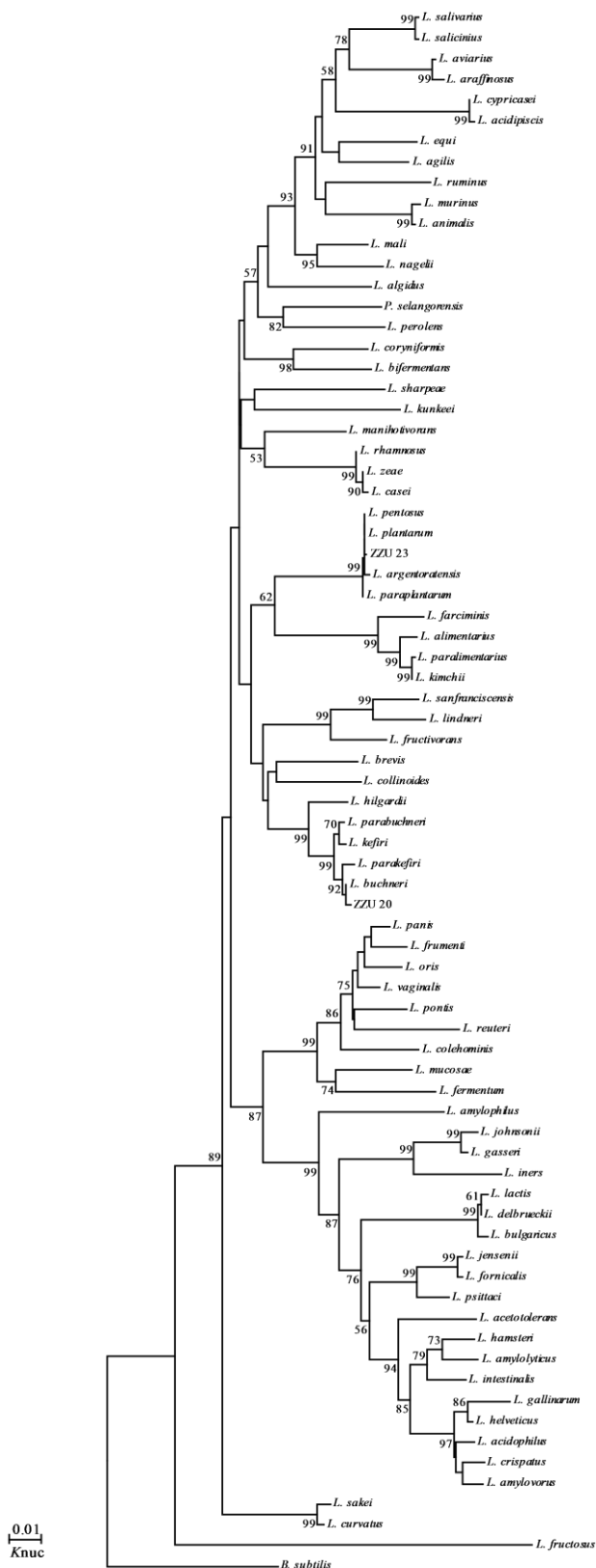
In this study, all the isolated LAB were characterized by



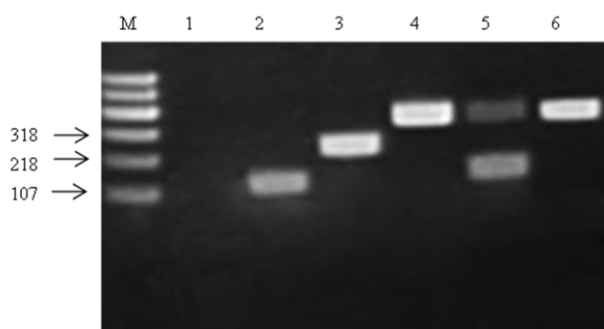
**Figure 1.** Phylogenetic tree showing the relative positions of *Leuconostoc*, *Weissella*, *Lactococcus*, and *Enterococcus* species, as inferred by the neighbor-joining method with 16S rRNA gene sequences. *B. subtilis* is used as an outgroup. Bootstrap values for a total of 1,000 replicates are shown at the nodes of the tree. The bar indicates 1% sequence divergence. Knuc, nucleotide substitution rates. *Ln.*, *Leuconostoc*s; *W.*, *Weissella*; *L.*, *Lactococcus*; *E.*, *Enterococcus*.

the physical procedure, API 50 CH strips, and for the purpose of identifying LAB isolates at the species level, molecular phylogeny analysis was employed and phylogenetic trees were constructed based on the 16S rDNA sequences from evolutionary distances by the neighbor-joining method, which led to delineation of 6 groups of isolates, and strains in group A, B, and C were all identified to clear phylogenetic position (Eitan et al., 2006). Group D representative strain ZZU 12 was clearly ascribed to *Lc. lactis* cluster containing

three subspecies: *Lc. lactis* subsp. *cremoris*, *Lc. lactis* subsp. *lactis*, and *Lc. lactis* subsp. *hordniae* (Figure 1). However, 16S rDNA sequence analysis could not differentiate strains at the subspecies level or efficiently classify interspecies relationships (Stackebrandt et al., 1994), combine with carbohydrate fermentation patterns nearly identical to that type strain of *Lc. lactis* subsp. *lactis* 5805<sup>T</sup> excepting maltose and *N*-acetyl glucosamine, but their ribose, D-Xylose, mannitol and amygdaline fermentation patterns differed from



**Figure 2.** Phylogenetic tree showing the relative position of *L. plantarum*, *L. brevis*, and *L. paraplantrum* species as inferred by the neighbor-joining method with 16S rRNA gene sequences. *B. subtilis* is used as an outgroup. Bootstrap values for a total of 1,000 replicates are shown at the nodes of the tree. The bar indicates 1% sequence divergence. KnuC, nucleotide substitution rates.



**Figure 3.** Amplification products obtained from the *recA* multiplex assay. Lane M contained a 600 bp PLUS DNA ladder (Tiangen Biotech Co, Ltd., Beijing, China). Lanes 1, 2, 3, 4, and 5, PCR amplification products from *L. casei* JCM 16167<sup>T</sup> (negative control), *L. paraplantarum* JCM 12533<sup>T</sup>, *L. pentosus* JCM 1558<sup>T</sup>, *L. plantarum* subsp. *plantarum* JCM 1149<sup>T</sup>, and *L. plantarum* subsp. *argentoratensis* JCM 16169<sup>T</sup>, respectively; Lane 6, PCR amplification product from ZZU 23. PCR, polymerase chain reaction.

those of the other two subspecies (Table 2). In addition, the strain ZZU 12 could grow in 0.1% bile salt, which made it different from the other two subspecies (Kim et al., 1999), and therefore, group D strains could be identified as *Lc. lactis* subsp. *lactis*. The same difficulty exists in the group E, members *L. plantarum* cluster including *L. pentosus*, *L. plantarum* subsp. *plantarum*, *L. plantarum* subsp. *argentoratensis*, and *L. paraplantarum*, which have very similar 16S rDNA gene sequences that differ only by 2 bp. The PCR product of *recA* gene is regarded as an efficient way for differentiating the distantly related species (Torriani et al., 2001). The PCR amplification analysis of partial *recA* gene products permitted a clear distinction between the four type strains and group E strains. The strain ZZU 23, represented strain of group E, had the same product (318 bp) as the *L. plantarum* subsp. *plantarum*. Therefore, strain ZZU 23 could be identified as *L. plantarum* subsp. *plantarum*.

Different species and the characteristics of epiphytic LAB might change and influence fermentation process and silage quality. During early fermentation phase, WSC are converted into CO<sub>2</sub>, heat and water by both plant cells and aerobic microbes, lactic acid-producing cocci, e.g. lactococci, leuconostocs, weissella, streptococci, pediococci, and

**Table 3.** Microorganisms of whole-crop wheat ensiled for 30 d

	Counts (log CFU/g of FM) of viable microorganisms			
	Coliform bacteria	Aerobic bacteria	Yeasts	LAB
Control	4.1	6.2 <sup>a</sup>	5.6 <sup>a</sup>	4.7 <sup>b</sup>
ZZU 1	ND	4.9 <sup>b</sup>	4.5 <sup>b</sup>	5.7 <sup>a</sup>
FG 1	ND	4.1 <sup>b</sup>	4.9 <sup>b</sup>	4.1 <sup>b</sup>
SEM	-	0.5	0.6	0.3

CFU, colony forming unit; FM, fresh matter; ZZU, Zhengzhou University; ND, not detected; FG, forage and grass; SEM, standard error of the mean. Molds were not detected in all sampling days

enterococci, grow vigorously and start lactate fermentation by creating an anaerobic environment suitable for the development of lactobacilli (Ennahar et al., 2003). In the present study, the various groups presumably represented 4 genera including one rod (*Lactobacillus*) and three cocci (*Lactococcus*, *Weissella*, and *Leuconostoc*). In contrast with cocci that could not grow at low pH values, lactobacilli play a more important role in promoting lactic acid fermentation for a longer time, leading to a sharp drop in pH. Many studies have indicated that inoculating forage with homofermentative lactobacilli such as *L. casei* or *L. plantarum* has beneficial effects on increasing the amount of lactic acid content and improving silage quality. Heterofermentative LAB can improve silage fermentation quality to the some extent in some cases, but their efficiency is not as good as homofermentative ones (Cai, 1999; Pang et al., 2011b).

It was reported that epiphytic lactobacilli must reach a level of at least 10<sup>5</sup> CFU/g FM to ensure successful silage storage (Ennahar et al., 2003; Pang et al., 2012), while in the present study, the number of LAB were below 10<sup>4</sup> CFU/g of FM, and the counts of aerobic bacteria, coliform bacteria and yeasts were higher than 10<sup>4</sup> CFU/g of FM in the fresh wheat material (data not shown). When LAB fail to produce adequate lactic acid in the process of silage fermentation to reduce pH and suppress the growth of harmful bacteria, the resulting silage will be of poor quality. In the present study, the control silage show higher numbers of coliform bacteria after day 5 of fermentation. The most plausible explanation lies in the fermentation quality. The control silages did not improve silage quality, if the silage pH does not decline to <4.0, the growth of coliform bacteria and aerobic bacteria is

**Table 4.** Fermentation quality and chemical composition of whole-crop wheat silages ensiled for 30 d<sup>1</sup>

Treatment	pH	Organic acid (% FM)				Ammonia-N (g/kg of FM)	DM	Chemical composition (% DM)		
		Lactic	Acetic	Propionic	n-Butyric			Organic matter	Crude fiber	Ether extract
Control	4.20 <sup>a</sup>	1.25 <sup>c</sup>	0.37 <sup>c</sup>	ND	ND	1.80	47.10 <sup>b</sup>	92.58 <sup>a</sup>	26.28 <sup>a</sup>	3.24
ZZU 1	3.49 <sup>b</sup>	3.75 <sup>a</sup>	0.95 <sup>b</sup>	ND	ND	1.70	48.90 <sup>a</sup>	93.30 <sup>b</sup>	22.97 <sup>b</sup>	3.32
FG 1	3.58 <sup>b</sup>	3.40 <sup>a</sup>	1.27 <sup>a</sup>	ND	ND	1.60	47.13 <sup>b</sup>	93.50 <sup>b</sup>	23.41 <sup>b</sup>	3.61
SEM	0.01	0.33	0.12	-	-	0.25	0.68	0.28	1.26	0.45

FM, fresh matter; DM, dry matter; ND, not detected; ZZU, Zhengzhou University; FG, forage and grass; SEM, standard error of the mean.

<sup>1</sup> Values are the means of three silage samples.

Means in the same column with different superscripts in lowercase letter are statistically significantly different (p<0.05).



not inhibited (Cai et al., 1998; 2003).

The objectives of inoculating silage with LAB are to accelerate the production of lactic acid and lower the pH values, and inhibit the reproduction of harmful bacteria (Ashbell et al., 1997). Many commercial LAB inoculants are selected to add the ensilaged forage to predominate and outnumber the naturally epiphytic LAB present in the forage. They may be dependent on several characteristics, such as their capacity to dominate the natural microflora in the forages and to produce lactic acid rapidly due to effective fermentation (Hellings et al., 1985). This research found that all the harmful microorganisms and pH values of the treated silages declined rapidly than the control; the values of pH and ammonia-N content of ZZU 1 treated silages were relatively equal with that treated with FG 1. FG 1 is a popular commercial inoculant both in China and Japan. Compared with the FG 1, strain ZZU 1 is better than commercial strain FG 1 in some cases, such as it can grow at the sanity of 6.5% and pH 3.0. That may mean ZZU 1 strain has potential value being as a commercial inoculant for forage crop ensiling, and more experiments about its effectiveness in other crops are underway.

## CONCLUSION

The isolated LAB strains from the fresh wheat and control WCWS were mostly heterofermentative and did not have a strong surviving ability in low pH condition. The treated silages with *L. plantarum* subsp. *plantarum* strains ZZU 1 and FG 1 were preserved well, which shows the additive of LAB, especially the lactobacilli, is necessary for wheat silage. In addition, the strain ZZU 1 showed a potential ability for developing as an excellent additive.

## ACKNOWLEDGMENTS

This work was supported by Foundation of Henan Science and Technology Committee (Grant No. 132300410054).

## REFERENCES

- Adamson, A. H. and A. Reeve. 1992. Nutritional evaluation of whole-crop wheat. In: Whole-Crop Cereals (Eds. B. A. Stark and J. M. Wilkinson). Chalcombe Publications, Aberystwyth, UK. pp. 85-96.
- AOAC. 1990. Official Methods of Analysis. 15th ed. Association of Official Analytical Chemists, Arlington, VA, USA.
- Ashbell, G., H. H. Theune, and D. J. Sklan. 1985. Ensiling whole wheat at various maturation stages: Changes in nutritive ingredients during maturation and ensiling and upon aerobic exposure. *J. Agric. Food Chem.* 33:1-4.
- Ashbell, G., Z. G. Weinberg, I. Bruckental, K. Tabori, and N. Sharet. 1997. Wheat silage: Effect of cultivar and stage of maturity on yield and degradability *in situ*. *J. Agric. Food Chem.* 45:709-712.
- Cai, Y. 1999. Identification and characterization of Enterococcus species isolated from forage crops and their influence on silage fermentation. *J. Dairy Sci.* 82:2466-2471.
- Cai, Y., Y. Benno, M. Ogawa, S. Ohamomo, S. Kumai, and T. Nakase. 1998. Influence of *Lactobacillus* spp. from an inoculant and of *Weissella* and *Leuconostoc* spp. from forage crops on silage fermentation. *Appl. Environ. Microbiol.* 64:2982-2987.
- Cai, Y., Y. Fujita, M. Murai, N. Yoshida, A. Kitamura, and T. Miura. 2003. Application of lactic acid bacteria (*Lactobacillus plantarum* Chikuso-1) for silage preparation of forage paddy rice. *J. Jpn. Soc. Grassland Sci.* 49:477-485.
- Cao, Y., Y. Cai, T. Takahashi, N. Yoshida, M. Tohno, R. Uegaki, K. Nonaka, and F. Terada. 2011. Effect of lactic acid bacteria inoculant and beet pulp addition on fermentation characteristics and *in vitro* ruminal digestion of vegetable residue silage. *J. Dairy Sci.* 94:3902-3912.
- Chen, M. M., Q. H. Liu, G. R. Xin, and J. G. Zhang. 2013. Characteristics of lactic acid bacteria isolates and their inoculating effects on the silage fermentation at high temperature. *Lett. Appl. Microbiol.* 56:71-78.
- Ennahar, S., Y. Cai, and Y. Fujita. 2003. Phylogenetic diversity of lactic acid bacteria associated with paddy rice silage as determined by 16S ribosomal DNA analysis. *Appl. Environ. Microbiol.* 69:444-451.
- Eitan, B. D., O. H. Shapiro, N. Siboni, and A. Kushmaro. 2006. Advantage of using inosine at the 3' termini of 16S rRNA gene universal primers for the study of microbial diversity. *Appl. Environ. Microbiol.* 72:6902-6906.
- Filya, I., G. Ashbell, Y. Hen, and Z. G. Weinberg. 2000. The effect of bacterial inoculants on the fermentation and aerobic stability of whole crop wheat silage. *Anim. Feed Sci. Technol.* 88:39-46.
- Hellings, P., G. Bertin, and Vanbelle. 1985. Effect of lactic acid bacteria on silage fermentation. In: Proceedings 15th International Grassland Congress. Kyotosuyuppan, Kyoto, Japan. pp. 932-933.
- Kim, W. S., J. Ren, and N. W. Dunn. 1999. Differentiation of *Lactococcus lactis* subspecies *lactis* and subspecies *cremoris* strains by their adaptive response to stresses. *FEMS Microbiol. Lett.* 171:57-65.
- Kimura, M. and T. Ohta. 1972. On the stochastic model for estimation of mutational distance between homologous proteins. *J. Mol. Evol.* 2:87-90.
- Kozaki, M., T. Uchimura, and S. Okada. 1992. Experimental Manual of Lactic Acid Bacteria. Asakurashoten, Tokyo, Japan.
- Lu, C. and L. Fan. 2013. Winter wheat yield potentials and yield gaps in the North China Plain. *Field Crops Res.* 143:98-105.
- Müller, C. E. 2005. Fermentation patterns of small-bale silage and haylage produced as a feed for horses. *Grass Forage Sci.* 60:109-118.
- Pang, H., G. Qin, Z. Tan, Z. Li, Y. Wang, and Y. Cai. 2011a. Natural populations of lactic acid bacteria associated with silage fermentation as determined by phenotype, 16S ribosomal RNA and *recA* gene analysis. *Syst. Appl. Microbiol.* 34:235-241.
- Pang, H., Z. Tan, G. Qin, Y. Wang, Z. Li, Q. Jin, and Y. Cai. 2012. Phenotypic and phylogenetic analysis of lactic acid bacteria isolated from forage crops and grasses in the Tibetan Plateau. *J. Microbiol.* 50:63-71.

- Pang, H, M. Zhang, G. Qin, Z. Tan, Z. Li, Y. Wang, and Y. Cai. 2011b. Identification of lactic acid bacteria isolated from corn stovers. *Anim. Sci. J.* 82:642-653.
- Stackebrandt, E. and B. M. Goebel. 1994. A place for DNA-DNA reassociation and 16S rRNA sequence analysis in the present species definition in bacteriology. *Int. J. Syst. Evol. Microbiol.* 44:846-849.
- Tamura, K., J. Dudley, M. Nei, and S. Kumar. 2007. MEGA 4: Molecular Evolutionary Genetics Analysis (MEGA) software version 4.0. *Mol. Biol. Evol.* 24:1596-1599.
- Tanaka, O. and S. Ohmomo. 1995. A simple method of laboratory silage fermentation by using a plastic pouch for packaging. *Grassland Sci.* 41:55-59.
- Torriani, S., G. E. Felis, and F. Dellaglio. 2001. Differentiation of *Lactobacillus plantarum*, *L. pentosus*, and *L. paraplantarum* by *recA* Gene Sequence Analysis and Multiplex PCR Assay with *recA* Gene-Derived Primers. *Appl. Environ. Microbiol.* 67:3450-3454.
- Van Soest, P. J., J. B. Robertson, and B. A. Lewis. 1991. Methods for dietary fiber, neutral detergent fiber, and nonstarch polysaccharides in relation to animal nutrition. *J. Dairy Sci.* 74:3583-3597.
- Wang, Q., B. Tang, and Z. Han. 2013. The effects of the different silage on milk yield and composition in dairy cows. *Dairy Cows* 9:52-54.
- Weinberg, Z. G, P. Khanal, C. Yildiz, Y. Chen, and A. Arieli. 2010. Effects of stage of maturity at harvest, wilting and LAB inoculant on aerobic stability of wheat silages. *Anim. Feed Sci. Technol.* 158:29-35.
- Weinberg, Z. G., Y. Chen, and R. Solomon. 2009. The quality of commercial wheat silages in Israel. *J. Dairy Sci.* 92:638-644.
- Xie, Z., T. Zhang, X. Chen, G. Li, and J. Zhang. 2012. Effects of maturity stages on the nutritive composition and silage quality of whole crop wheat. *Asian Australas. J. Anim. Sci.* 25:1374-1380.