

Loss of FAT Atypical Cadherin 4 Expression Is Associated with High Pathologic T Stage in Radically Resected Gastric Cancer

Hae Yoen Jung*, Hyundeuk Cho^{1,*}, Mee-Hye Oh, Ji-Hye Lee, Hyun Ju Lee, Si-Hyong Jang, and Moon Soo Lee²

Department of Pathology, Soonchunhyang University Cheonan Hospital, ¹Department of Pathology, Soonchunhyang University College of Medicine, ²Department of Surgery, Soonchunhyang University Cheonan Hospital, Cheonan, Korea

Purpose: Recent studies have revealed recurrent alterations in the cell adhesion gene *FAT4*, a candidate tumor suppressor gene, in cancer. FAT atypical cadherin 4 (FAT4) is a transmembrane receptor involved in the Hippo signaling pathway, which is involved in the control of organ size. Here, we investigated the loss of FAT4 expression and its association with clinicopathological risk factors in gastric cancer.

Materials and Methods: We assessed the expression of FAT4 by using immunohistochemistry on three tissue microarrays containing samples from 136 gastric cancer cases, radically resected in the Soonchunhyang University Cheonan Hospital between July 2006 and June 2008. Cytoplasmic immunoreexpression of FAT4 was semi-quantitatively scored using the H-score system. An H-score of ≥ 10 was considered positive for FAT4 expression.

Results: Variable cytoplasmic expressions of FAT4 were observed in gastric cancers, with 33 cases (24.3%) showing loss of expression (H-score < 10). Loss of FAT4 expression was associated with an increased rate of perineural invasion (H-score < 10 vs. ≥ 10 , 36.4% vs. 16.5%, $P=0.015$), high pathologic T stage ($P=0.015$), high tumor-node-metastasis stage ($P=0.017$), and reduced disease-free survival time (H-score < 10 vs. ≥ 10 , mean survival 62.7 ± 7.3 months vs. 79.1 ± 3.1 months, $P=0.025$). However, no association was found between the loss of FAT4 expression and tumor size, gross type, histologic subtype, Lauren classification, lymphovascular invasion, or overall survival.

Conclusions: Loss of FAT4 expression appears to be associated with invasiveness in gastric cancer.

Key Words: FAT4 protein; Stomach neoplasms; Surgery; Disease-free survival

Introduction

Despite developments in surgical techniques and improvements in the efficacies of anticancer drugs in recent years, gastric cancer (GC) remains one of the most common malignancies and the second most common cause of cancer-related deaths worldwide.¹

Therefore, the identification of new diagnostic or prognostic biomarkers for GC is one of the major goals in this field.

Recent whole-exome sequencing studies have revealed a number of potential cancer-driving genes in GC. Among the frequently mutated cell-adhesion genes, *FAT4* was particularly notable, ranking fourth in mutational significance after *PKHD1*, *CTNNB1*, and *CNTN1*.²

The family of *FAT* genes consists of the human homologs of the *Drosophila Fat* gene, which is involved in tumor suppression,³ control of cell proliferation during *Drosophila* development, and planar cell polarity.⁴ In addition, Fat was recently found to be a potential transmembrane receptor in the Hippo signaling pathway in *Drosophila*, which plays an important role in controlling organ size.⁵ In *Drosophila*, Fat inactivation causes hyperplasia of pupal

Correspondence to: Moon Soo Lee

Department of Surgery, Soonchunhyang University Cheonan Hospital, 31 Suncheonhyang 6-gil, Dongnam-gu, Cheonan 330-903, Korea

Tel: +82-41-570-3628, Fax: +82-41-571-0129

E-mail: msslee@schmc.ac.kr

Received January 19, 2015

Revised February 8, 2015

Accepted February 8, 2015

*These authors contributed equally to this work.

© This is an open-access article distributed under the terms of the Creative Commons Attribution Non-Commercial License (<http://creativecommons.org/licenses/by-nc/3.0>) which permits unrestricted noncommercial use, distribution, and reproduction in any medium, provided the original work is properly cited.

imaginal discs, and loss-of-function mutations give rise to hyperplastic tumors through increased cell proliferation and decreased cell death.⁶

There are four members in the FAT atypical cadherin (FAT) family in humans (FAT1, FAT2, FAT3, and FAT4). FAT1 and FAT4 suppress tumor growth via activation of Hippo signaling, while FAT1 can also promote tumor migration via induction of actin polymerization. Thus, FAT1 is both tumor suppressive and oncogenic, while FAT4 acts solely as a tumor suppressor. However, to our knowledge, protein expression levels of FAT4 have not been examined in gastric adenocarcinoma. Here, we aimed to examine immunohistochemical expression of FAT4 and its prognostic significance in gastric adenocarcinoma.

Materials and Methods

1. Patient and tissue samples

The study was retrospectively performed on a consecutive cohort of 136 patients with GCs, who had been surgically treated in Soonchunhyang University Cheonan Hospital between July 2006 and June 2008. All tumors were histopathologically re-examined by two independent pathologists (HY Jung and HD Cho) to confirm the diagnosis, depth of invasion, number of metastatic lymph nodes, resection margin, and lymphovascular/perineural invasion. Tumor stage was re-classified according to the standardized tumor-node-metastasis (TNM) 7th classification of the American Joint Committee on Cancer (AJCC).⁷ Clinical data, information on adjuvant chemotherapy, recurrence, vital status, and cause of death were obtained from medical records.

All the patients underwent subtotal or total gastrectomy for curative resection and 99 patients (72.8%) received adjuvant chemotherapy according to the following criteria: (1) tumors of more advanced stage than stage Ib according to the 7th AJCC cancer staging system,⁷ (2) patients who do not refuse chemotherapy, and (3) patients who do not respond to contraindication for chemotherapy.

2. Tissue microarrays

Tissue microarrays (TMAs) were constructed by reviewing hematoxylin and eosin slides, and selecting one representative formalin-fixed paraffin-embedded (FFPE) archival block for each case. Core tissue biopsies (2 mm in diameter) were taken from individual FFPE blocks (donor blocks) and arranged in recipient paraffin blocks (tissue array blocks) using a trephine. In addition, normal

gastric mucosa was obtained in 16 cases using the same procedure. Three array blocks containing 136 GC and 16 normal gastric tissue samples were prepared.

3. Immunohistochemistry and staining evaluation

The expression of FAT4 in normal gastric mucosa and GCs was evaluated using immunohistochemistry. Tissue sections (4 μ m) were cut from the TMAs, deparaffinized in xylene, and hydrated using an ethanol-deionized water series. Endogenous peroxidase activity was blocked using 3% H₂O₂ in methanol for 15 minutes. Sections were washed, and stained with a rabbit polyclonal antibody against FAT4 (NBPI-78381; Novus biological, Littleton, CO, USA) diluted 1:50. Primary antibody binding was detected using Bond Polymer Refine Detection Kit (Leica, Wetzlar, Germany). Slides were counterstained with hematoxylin.

The predominant cytoplasmic staining intensities were designated negative (0), weak (1), moderate (2), or strong (3). The fractions of FAT4-positive cells were estimated as percentages of positively staining areas, and FAT4 expression was semi-quantitatively calculated using the H-score system as follows: H-score=3 \times percentage of strongly staining cells+2 \times percentage of moderately staining cells+percentage of weakly staining cells. An H-score of ≥ 10 was considered positive for FAT4 expression.

4. Statistical analysis

To evaluate the relationship between FAT4 expression and clinicopathological parameters, the Pearson chi-square test was used for parametric analysis whereas Fisher exact test, Mann-Whitney test, and Kruskal-Wallis test were applied for nonparametric analysis. Overall survival (OS) and disease-free survival (DFS) rates according to FAT4 expression were calculated using Kaplan-Meier analysis. To assess differences between Kaplan-Meier curves, the log-rank test was used. DFS was calculated in all but 5 patients of stage IV according to the 7th AJCC staging system.⁷

Results

1. Clinicopathological characteristics of the gastric cancer patients

Among a total of 136 GC patients, there were 101 men (74.3%) and 35 women (25.7%), with a mean age of 60.2 years (range, 25 to 81 years); the mean follow-up time was 6.8 years (range, 0.8 to 7.9 years). As mentioned above, all the patients underwent subtotal or total gastrectomy and 99 patients (72.8%) received adjuvant

chemotherapy. There were 92 advanced gastric cancer (AGC) cases (67.6%), 44 early gastric cancer (EGC) cases (32.4%), and the 5-year survival rate calculated according to the 7th AJCC stage

was 94.4% for stage I, 85.7% for stage II, and 31.7% for stage III/IV cases in this cohort.

In histologic examination, the GC samples were comprised of

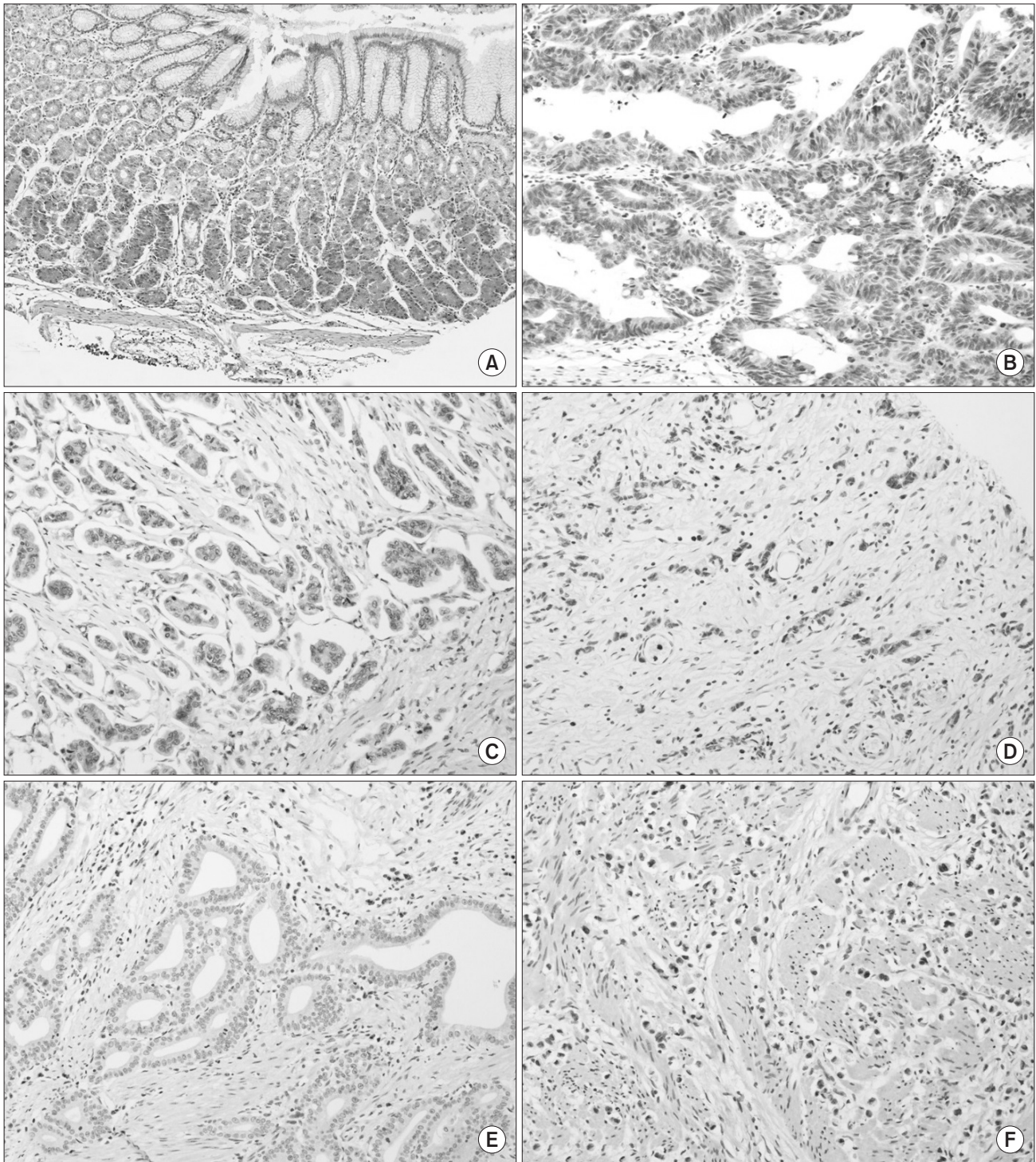


Fig. 1. Immunohistochemical staining of FAT4 in normal gastric mucosa and gastric adenocarcinoma ($\times 200$). FAT4 expression was well preserved in normal gastric mucosa (A), while tumors showed variable expressions of FAT4. Strong and diffuse FAT4 expression was seen in intestinal-type gastric adenocarcinoma (B), while focal FAT4 expression was observed in intestinal- (C) and diffuse-type (D) gastric adenocarcinoma. A total loss of the expression of FAT4 was also observed in intestinal- (E) and diffuse-type (F) gastric adenocarcinoma.

81 tubular adenocarcinomas (59.6%), 47 poorly cohesive carcinomas including signet ring cell carcinomas (34.6%), 3 mucinous adenocarcinomas (2.2%), 3 papillary adenocarcinomas (2.2%), and 2 undifferentiated carcinomas (1.5%).

2. Loss of FAT4 expression in gastric cancer

The evaluation of FAT4 expression in 16 normal gastric mucosa samples and 136 GC samples was shown in Fig. 1. As shown in Fig. 2, FAT4 expression was better preserved in normal gastric mucosae (mean H-score \pm standard deviation, 148.1 ± 67.4) than in primary GCs, where variable cytoplasmic expression was seen (mean H-score \pm standard deviation, 60.0 ± 63.1). Loss of FAT4 expression was seen in 33/136 cases of GC (24.3%) (H-score < 10), including 4 cases of EGC and 29 cases of AGC. Expression of FAT4 was seen in 103/136 of GC cases (75.7%) (H-score ≥ 10).

3. Association of loss of FAT4 expression with clinicopathological parameters in gastric cancer

Table 1 lists the clinicopathological parameters investigated and the correspondin gostatuses of FAT4 expression. The loss of FAT4 expression in GC was significantly associated with a large tumor size ($P=0.017$), perineural invasion ($P=0.015$), more advanced T stages ($P=0.015$), and more advanced AJCC stages ($P=0.011$) (Table 1, Fig. 2). The loss of FAT4 was more frequently observed in the group with a more advanced N stage, but statistical significance was borderline ($P=0.059$). No association was found between FAT4 expression and sex, age, tumor location, gross type, histologic subtype, Lauren classification, or lymphovascular invasion.

As seen in Fig. 3, the loss of FAT4 expression was significantly associated with poor DFS rates (5-year survival rate; loss vs. no loss, 68.7% vs. 86.9%, $P=0.017$) according to the Kaplan–Meier analysis. The FAT4–negative group was associated with a poor OS rate, but statistical significance was borderline (5-year survival rate; loss vs. no loss, 57.6% vs. 70.9%, $P=0.083$) (Fig. 3). The prognostic value of FAT4 was confirmed by the univariate Cox regression analysis for the DFS rate (hazard ratio=0.415; 95% confidence interval, 0.19 to 0.92; $P=0.031$), but this association was not significant in the multivariate analysis (data not shown).

Otherwise, poor DFS and OS rates were significantly associated with male patients, lymphovascular invasion, perineural invasion, and more advanced pathologic T/N stages (all $P < 0.05$). Moreover, OS rates in patients receiving adjuvant chemotherapy tended to improve than patients without adjuvant chemotherapy, especially in stage III or IV of the 7th AJCC stage ($n=56$); however, the number of patients without adjuvant chemotherapy was too small for the analysis to be considered powerful enough ($n=8$).

Discussion

During organ development, the number of cells in growing tissues is tightly controlled by the regulation of cellular proliferation and apoptosis to maintain a proper organ size and a specific organ shape. This is orchestrated by numerous developmental genes.^{8,9} The dysregulation of developmental genes is often implicated in human diseases. For example, FAT1, an isoform of the atypical cadherin, has been reported to induce liver fibrosis, which is also

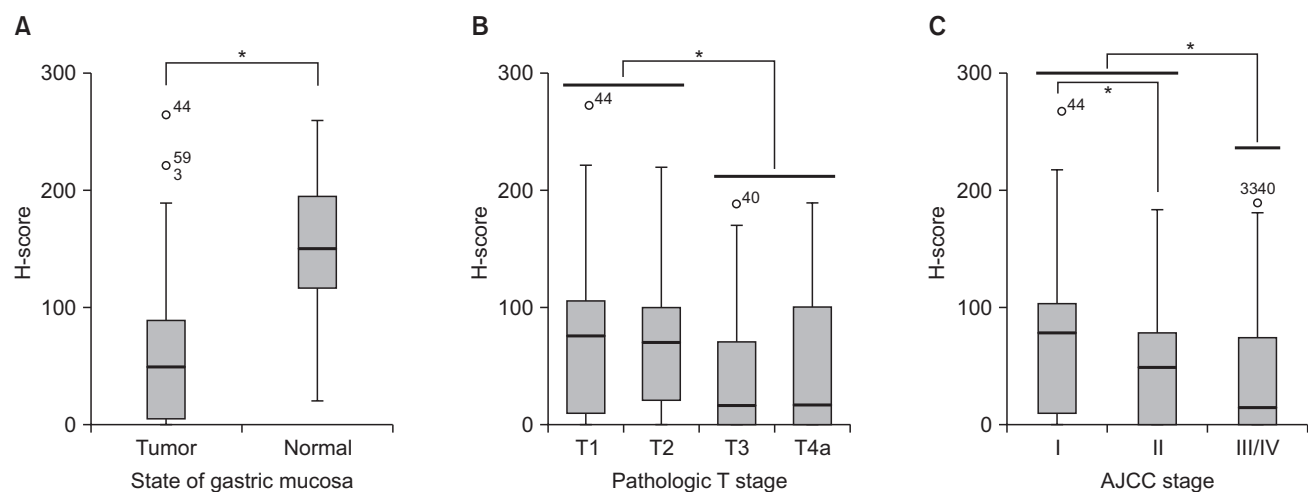


Fig. 2. Comparison of the H-scores of FAT4 immunohistochemical staining. (A) The H-scores for FAT4 in normal gastric mucosa (mean H-score, 148.1 ± 67.4) and gastric cancer (mean H-score, 60.0 ± 63.1). (B) The H-scores of FAT4 according to the pathologic T stage. (C) The H-scores of FAT4 according to the American Joint Committee on Cancer (AJCC) cancer staging system. * $P < 0.05$.

Table 1. Expression of FAT4 in relation to clinicopathological parameters in GCs

Clinicopathological parameter	FAT4 expression in GCs		P-value	Clinicopathological parameter	FAT4 expression in GCs		P-value
	Loss	No loss			Loss	No loss	
Sex (n=136)				Lymphatic invasion (n=136)			0.232
Female (n=35)	12 (34.3)	23 (65.7)	0.109	Not identified (n=70)	14 (20.0)	56 (80.0)	
Male (n=101)	21 (20.8)	80 (79.2)		Present (n=66)	19 (28.8)	47 (71.2)	
Mean age (yr)	63.7±10.5	59.8±13.0	0.150	Venous invasion (n=136)			0.942
Tumor size (cm)	4.7±2.1	3.9±2.4	0.017*	Not identified (n=120)	29 (24.2)	91 (75.8)	
Gross type (advanced GC) (n=92)			0.703	Present (n=16)	4 (25.0)	12 (75.0)	
Borrmann type 1 (n=6)	2 (33.3)	4 (66.7)		Perineural invasion			0.015*
Borrmann type 2 (n=25)	9 (36.0)	16 (64.0)		Not identified (n=107)	21 (19.6)	86 (80.4)	
Borrmann type 3 (n=57)	16 (28.1)	41 (71.9)		Present (n=29)	12 (41.4)	17 (58.6)	
Borrmann type 4 (n=4)	2 (50.0)	2 (50.0)		Pathologic T stage (n=136)			0.015*
Gross type (early GC) (n=44)			0.563	pT1 (n=44)	4 (9.1)	40 (90.9)	
0-I (n=4)	0 (0.0)	4 (100.0)		pT2 (n=21)	4 (19.0)	17 (81.0)	
0-IIa (n=5)	1 (20.0)	4 (80.0)		pT3 (n=50)	18 (36.0)	32 (64.0)	
0-IIb (n=9)	2 (22.2)	7 (77.8)		pT4a (n=21)	7 (33.3)	14 (66.7)	
0-IIc (n=14)	1 (7.1)	13 (92.9)		Pathologic N stage (n=136)			0.059
0-III (n=8)	0 (0.0)	8 (100.0)		pN0, N1 (n=77)	14 (18.2)	63 (81.8)	
0-IIb+IIc (n=4)	0 (0.0)	4 (100.0)		pN2, N3 (n=59)	19 (32.2)	40 (67.8)	
Histologic grade (n=128)			0.456	AJCC stage (n=136)			0.011*
Well (n=11)	2 (18.2)	9 (81.8)		I (n=55)	6 (10.9)	49 (89.1)	
Moderate (n=34)	6 (17.6)	28 (82.4)		II (n=25)	9 (36.0)	16 (64.0)	
Poor (n=83)	23 (27.7)	60 (72.3)		III/IV (n=56)	18 (32.1)	38 (67.9)	
Lauren classification (n=128)			0.531				
Intestinal (n=78)	18 (23.1)	60 (76.9)					
Diffuse (n=48)	12 (25.0)	36 (75.0)					
Mixed (n=2)	1 (50.0)	1 (50.0)					

Values are presented as number (%) or mean±standard deviation. GC = gastric cancer; AJCC = American Joint Committee on Cancer. *P<0.05.

referred to as cirrhosis, and carcinogenesis. It has recently been found that members of the FAT family code for potential transmembrane receptors in the Hippo signaling pathway,⁵ which controls organ size during animal development.¹⁰ There is also growing evidence of a tumor suppressive role for members of the FAT family, particularly FAT4, which is believed to act via the activation of the Hippo signaling pathway.^{11,12}

Here, we have examined the expression of FAT4 in normal gastric mucosa and gastric adenocarcinoma, and demonstrated a loss of FAT4 expression in a subset of GCs. The loss of FAT4 expression was significantly associated with poor prognostic factors, and more frequently observed in AGC than in EGC patients. It was also associated with a large tumor size, perineural invasion, more

advanced pathologic T stages, more advanced pathologic N stages, more advanced AJCC stages, and shorter DFS rates. These results are in line with those of previous studies indicating that FAT4 acts as a tumor suppressor in other types of cancer.^{6,13,14}

Of the 44 EGC patients, 4 showed loss of FAT4 expression, and no statistically significant correlations with clinicopathological parameters were found. Interestingly, however, a signet ring cell carcinoma limited to the mucosa (pathologic T [pT] 1a), with metastasis to five regional lymph nodes at the time of surgery (pathologic N [pN] 2), showed a loss of FAT4 expression. The limited number of EGC cases included in this study might not be sufficient to clarify the clinical significance of the loss of FAT4 expression in EGC.

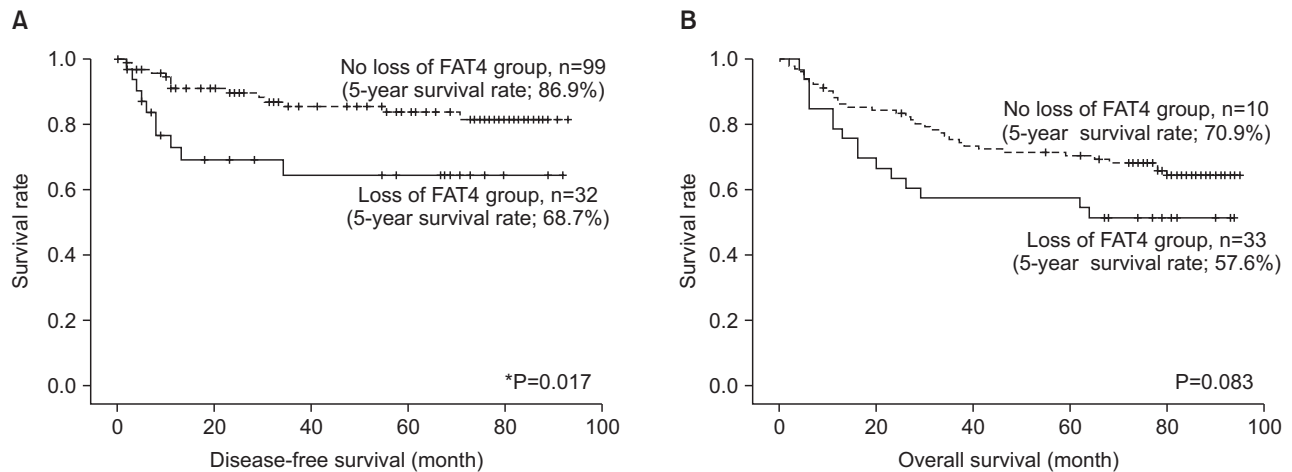


Fig. 3. Disease-free survival (DFS) and overall survival (OS) in relation to FAT4 expression in gastric cancer. (A) The loss of FAT4 expression was significantly associated with poor DFS (5-year survival rate; loss vs. no loss, 68.7% vs. 86.9%, $P=0.017$). (B) The FAT4-negative group was associated with poor OS, but statistical significance was borderline (5-year survival rate; loss vs. no loss, 57.6% vs. 70.9%, $P=0.083$). * $P < 0.05$.

In addition, we demonstrated that the loss of FAT4 expression was associated with more advanced pathologic T stages in a step-wise fashion. Four of the 44 cases with pT1 (9.1%), 4/21 with pT2 (19%), 18/50 with pT3 (36%), and 7/21 with pT4 (33.3%) showed a loss of FAT4 expression ($P=0.033$), suggesting that the loss of FAT4 expression may be associated with invasiveness in GC.

These results are in agreement with those of previous studies implicating *FAT4* as a candidate tumor suppressor gene in human carcinomas, including GC. A recent study found that missense mutations of *FAT4* were detected in peritoneal metastasis in pancreatic cancer.¹⁵ Zang et al.² showed that silencing of wild-type *FAT4* resulted in a significant increase in cell proliferation, and enhanced cellular invasion and migration, by reducing fibronectin adhesion in a gastric adenocarcinoma cell line. The authors also observed genomic deletions of *FAT4* in 4% of GC cases (3/83 tumors), and mutations in *FAT4* in approximately 5% of GC cases (6/110 tumors). Half of the *FAT4* mutations were predicted to adversely affect the protein function of FAT4. This suggests that *FAT4* may act as a tumor suppressor gene in GC, and that somatic inactivation of FAT4 may be a key tumorigenic event in a subset of GCs.²

However, our study showed the loss of FAT4 expression in a higher proportion of GCs (24.3%) as compared with the 5% gene mutations and 4% deletions of *FAT4* in GCs reported in the previous study.² These differences might be explained by epigenetic regulation or post-transcriptional modification. The mouse *Fat4* gene is inactivated by a loss of heterozygosity and promoter CpG hypermethylation in subcutaneous tumors induced by random chromosomal deletion.¹³ Additionally, human *FAT4* mRNA expression has

been found to be repressed in breast cancer, in part by promoter CpG hypermethylation.¹³ The *FAT4* promoter has also been found to be hypermethylated in a subset of stage I lung adenocarcinoma, and *FAT4* mRNA is downregulated in stage I/II non-small cell lung cancer.¹⁴

In summary, we have demonstrated a loss of FAT4 expression in a subset of gastric adenocarcinomas, and found this loss of expression to be associated with a more advanced T stage and shorter DFS. This suggests *FAT4* as an important tumor suppressive gene in GC. Further studies examining the mechanisms leading to the loss of FAT4 expression are warranted to investigate the possible connections of FAT4 with the epithelial-mesenchymal transition in GC.

Acknowledgments

The authors appreciate the careful guidance of Professor Myoung-Won Son from the Department of Surgery, Soonchunhyang University Hospital on the collection of clinical data.

References

1. Brenner H, Rothenbacher D, Arndt V. Epidemiology of stomach cancer. *Methods Mol Biol* 2009;472:467-477.
2. Zang ZJ, Cutcutache I, Poon SL, Zhang SL, McPherson JR, Tao J, et al. Exome sequencing of gastric adenocarcinoma identifies recurrent somatic mutations in cell adhesion and chromatin remodeling genes. *Nat Genet* 2012;44:570-574.

3. Bryant PJ, Huettner B, Held LI Jr, Ryerse J, Szidonya J. Mutations at the fat locus interfere with cell proliferation control and epithelial morphogenesis in *Drosophila*. *Dev Biol* 1988;129:541-554.
4. Axelrod JD. Progress and challenges in understanding planar cell polarity signaling. *Semin Cell Dev Biol* 2009;20:964-971.
5. Willecke M, Hamaratoglu F, Kango-Singh M, Udan R, Chen CL, Tao C, et al. The fat cadherin acts through the hippo tumor-suppressor pathway to regulate tissue size. *Curr Biol* 2006;16:2090-2100.
6. Katoh M. Function and cancer genomics of FAT family genes (review). *Int J Oncol* 2012;41:1913-1918.
7. Conlon I, Raff M. Size control in animal development. *Cell* 1999;96:235-244.
8. Johnston LA, Gallant P. Control of growth and organ size in *Drosophila*. *Bioessays* 2002;24:54-64.
9. Valletta D, Czech B, Thasler WE, Müller M, Bosserhoff AK, Hellerbrand C. Expression and function of the atypical cadherin FAT1 in chronic liver disease. *Biochem Biophys Res Commun* 2012;426:404-408.
10. Edgar BA. From cell structure to transcription: Hippo forges a new path. *Cell* 2006;124:267-273.
11. Sadeqzadeh E, de Bock CE, Thorne RF. Sleeping giants: emerging roles for the fat cadherins in health and disease. *Med Res Rev* 2014;34:190-221.
12. Qi C, Zhu YT, Hu L, Zhu YJ. Identification of Fat4 as a candidate tumor suppressor gene in breast cancers. *Int J Cancer* 2009;124:793-798.
13. Rauch TA, Wang Z, Wu X, Kernstine KH, Riggs AD, Pfeifer GP. DNA methylation biomarkers for lung cancer. *Tumour Biol* 2012;33:287-296.
14. Yachida S, Jones S, Bozic I, Antal T, Leary R, Fu B, et al. Distant metastasis occurs late during the genetic evolution of pancreatic cancer. *Nature* 2010;467:1114-1117.