

RESEARCH ARTICLE

Comprehensive Expression Analysis Suggests Functional Overlapping of Human FOX Transcription Factors in Cancer

Ya-Li Zhang, Feng-Ting Sun, Ze Zhang, Xiao-Xu Chen, Ai-Xiang Liu, Jing-Jing Pan, Fei Peng, Shuai Zhou, Li-Jun Sun*

Abstract

Forkhead-box (FOX) transcription factors comprise a large gene family that contains more than 50 members in man. Extensive studies have revealed that they not only have functions in control of growth and development, but also play important roles in different diseases, especially in cancer. However, biological functions for most of the members in the FOX family remain unknown. In the present study, the expression of 39 FOX genes in 48 kinds of cancer was mined from the Gene Expression Atlas database of European Bioinformatics Institute. The analysis results showed that some FOX genes demonstrate overlapping expression in various cancers, which suggests particular biological functions. The pleiotropic features of the FOX genes make them excellent candidates in efforts aimed to give medical treatment for cancers at the genetic level. The results also indicated that different FOX genes may have the synergy or antagonistic effects in the same cancers. The study provides clues for further functional analysis of FOX genes, especially for the pleiotropic biological functions and crosstalk of FOX genes in human cancers.

Keywords: FOX transcription factors - overlapping expression - cancer diseases - gene expression atlas

Asian Pac J Cancer Prev, 15 (23), 10475-10481

Introduction

The FOX transcription factors (Forkhead box, FOX), as one of the largest gene families, are characterized by the highly conserved 110 amino acids DNA-binding domain (Wijchers et al., 2006). The FOX domain is also known as winged-helix domain with two wing-like loops and three α -helices structure (Kaestner et al., 2000). Genome-based bioinformatics analyses have showed that FOX proteins comprise a large family members identified in species ranging from yeasts to humans, and have been classified into different subfamilies (Kaestner et al., 2000; Mazet et al., 2003; Wotton et al., 2006; Tu et al., 2006; Benayoun et al., 2011). Animals appeared to have more FOX genes than fungi, for example, with 4 genes identified in *Saccharomyces* and *Schizosaccharomyces*, and over 50 members in the human (Wotton et al., 2006; Benayoun et al., 2011). Up to date, the members of the FOX gene family have been demonstrated to play important roles in diverse biological processes, including cell differentiation, embryonic development, morphogenesis, metabolism, and effectors of signal transduction (Kaestner et al., 2000; Carlsson et al., 2002; Pohl et al., 2005).

The FOX transcription factors also play key roles in the health and disease (Hannenhalli et al., 2009; Benayoun et al., 2011; Katoh et al., 2013). Mutations in eight

different FOX genes including FOXC1, FOXC2, FOXE1, FOXE3, FOXL2, FOXN1, FOXP2, and FOXP3 have been associated with human congenital disorders or hereditary diseases (Carlsson et al., 2002). For example, FOXC1 has been identified in patients with defects in development of the anterior chamber of the eye (Lehmann et al., 2000). Mutations in FOXC2 lead to distichiasis, or double rows of eyelashes, together with lymphedema (Bell et al., 2001). Mutations in FOXL2 cause variable eyelid defects and also associated with ovarian failure (Crisponi et al., 2001; De et al., 2001). FOX family genes are also involved in carcinogenesis (Katoh et al., 2013). Several FOX genes such as FOXA1, FOXM1, FOXO1, FOXO2 (FOXO6), FOXO3, FOXO4, FOXP1, FOXR1 have been reported to play important roles in carcinogenesis as oncogenes and/or tumor suppressor genes (Katoh et al., 2013).

Although several FOX genes of human have been characterized functionally in the cancer diseases, the biological functions for the most members in this family remain unknown. To extend our understanding the biological function of the human FOX genes, we analyzed expression of human FOX genes in different cancer diseases from the European Bioinformatics Institute (EBI) (<http://www-test.ebi.ac.uk/gxa/>). The results suggested that most of human FOX family genes are different expression in cancer diseases. The results also provide

clues for further functional analysis of *FOX* genes, especially for the pleiotropic biological functions and the crosstalk of *FOX* genes in cancer diseases of human.

Materials and Methods

The sequence analysis of human FOX transcription factors

Using “forkhead human” to search the human *FOX* family genes in the gene mode of National Center of Biotechnology Information (<http://www.ncbi.nlm.nih.gov/gene>), the *FOX* genes were obtained. The protein sequences of human *FOX* transcription factors were obtained from National Center of Biotechnology Information. In addition, the chromosome, sites, location, and protein length of human *FOX* genes were obtained. Protein domain architectures of the *FOX* transcription factors were analyzed in SMART database (<http://smart.embl-heidelberg.de/>). The physics and chemistry features of *FOX* protein including molecular weight and isoelectric point, instability index, aliphatic index, and grand average hydropathicity were obtained from protParam (<http://web.expasy.org/protparam/>). The subcellular localization was predicted by Protcomp 9.0 (<http://linux1.softberry.com/berry.phtml?>).

Multiple sequence alignment of full-length protein sequences of human *FOX* transcription factors was performed using ClustalW2 program with default parameters. Phylogenetic tree was plotted using MEGA5.05 software by the Neighbor-joining method with 1000 bootstrap replicates. The conserved motifs in full length human *FOX* proteins were identified using Multiple Expectation Maximization for Motif Elicitation (MEME) program version 4.6.1 (<http://meme.nbcr.net/meme/>) with default parameters.

Expression profiling analysis in cancer diseases

The differential expression of human *FOX* genes in different cancer diseases was mined from Gene Expression Atlas database of European Bioinformatics Institute (<http://www-test.ebi.ac.uk/gxa/>). The Gene Expression Atlas is an added-value database providing information about gene expression in different cell types, organism parts, developmental stages, disease states, sample treatments and other biological/experimental conditions. The content of this database derives from re-annotation and statistical analysis of selected data from the arrayExpress archive of functional genomics data. The query results are ranked using various statistical measures and many independent studies in the database to show the particular gene-condition association. An interface allows us to query for differential gene expression (i) by *FOX* gene names; (ii) by cancer diseases. By the condition of P-value <0.05 of the automated screening, we have obtained the differential expression of 39 *FOX* genes in different cancer diseases. Moreover, P-value of up-regulated *FOX* genes was set as positive number, while the down-regulated genes as negative number. In order to illustrate the expression of *FOX* genes in the same cancer diseases, P-value was taken to the base 10 of a negative logarithm. Then invert P-value of up-regulated genes was set as positive number and down-regulated genes as

negative number. The histograms were plotted with invert P-value and its corresponding *FOX* genes.

Results and Discussion

Identification of human FOX genes

Using “forkhead human” to search the human *FOX* family genes in the gene mode of National Center of Biotechnology Information, the 50 *FOX* genes of human were obtained (Table 1). The *FOX* transcription factors of human have been named by a capital letter, and a number is used to distinguish members in the same subclass. The method of definition is similar with previous report (Kaestner et al., 2000). The 50 protein sequences of human *FOX* genes were obtained from National Center of Biotechnology Information. Protein domain architectures of the *FOX* transcription factors were analyzed in SMART database. The physics and chemistry features of *FOX* protein are analyzed by protparam (Table 1). The amino acid number of *FOX* protein is from 292 to 748 with average 473. The weight of protein is from 33 to 82.7 kDa with average 50.5 kDa. There is positive correlation between protein molecular weight and the number of amino acid. The isoelectric point of protein is from 4.92 to 9.82 with average 7.95. The instability index of protein is from 49.44 to 86.35. The aliphatic index of protein is from 50 to 75.37 with average 64.67. The grand average hydropathicity of protein is from -0.887 to -0.163 with average -0.496. The subcellular localization was predicted by Protcomp 9.0. The results showed that almost of predicted nuclear location scores are above 9.9, which indicated that most of *FOX* transcription factors can locate in nuclear.

Chromosomal location and Phylogenetic analysis of human FOX genes

50 *FOX* genes distribute on 19 chromosomes of human (Table 1). Among them, 8 *FOX* genes locate on the Chromosome 9. Chromosome 1 and 6 contains 5 *FOX* genes, Chromosome 2, 12, 14, 16, 17 and X contains 3 *FOX* genes, Chromosome 3, 5, 7, and 20 contains 2 *FOX* genes, Chromosome 8, 10, 11, 13, 15, 19 contains 1 *FOX* genes, respectively. The phylogenetic analysis suggested that human *FOX* transcription factors can be divided into A to S 19 subgroups (Figure 1). According to the phylogenetic tree and gene location analysis, it was found that there are fragments replication and string copying phenomenon of *FOX* transcription factors. For example, *FOXA1/FOXA2*, *FOXC1/FOXC2*, *FOXD1/FOXD2*, *FOXK1/FOXK2*, *FOXP1/FOXP2*, *FOXN1/FOXN4*, and *FOXN2/FOXN3* are fragments replication. Several genes *FOXD4L2*, *FOXD4L3*, *FOXD4L4*, *FOXD4L5*, and *FOXD4L6* are string copying. In order to analyze the diversity of human *FOX* proteins, the conserved motifs were identified. There were 2 or 3 conservative *FOX* motifs in the structure of human *FOX* domain. Among them, FOXH1, FOXJ2, FOXP1, FOXP2, FOXP3, FOXP4, FOXR1, and FOXR2 only have 2 motifs (motif 1 and motif 2). For the motif 1, the possible match is “QGWKNSIRHNLSDLNDCFVKVPRE”. For the motif 2, the possible match is

“PYSYIALITMAIQQSPEKRLTLNEIYQWI”. For the motif 3, the possible match is “PGKGNWTLDPDCEDMFENGSLRRRKR”. Most of FOX motifs in the N end of the sequence, suggests that the presence of these elements for FOX execution of protein function is required.

Expression profiling analysis of FOX genes in cancer diseases

To study the possible involvement of FOX genes in different cancer diseases, we mined expression of human FOX genes in different cancer diseases from the European Bioinformatics Institute (EBI) (<http://www-test.ebi.ac.uk/gxa/>). The results showed that the differential expression of 39 FOX genes in various diseases, including 48 kind

of cancer diseases.

Overlapping expression patterns of the FOX genes in response to different cancer diseases were analyzed. The results showed that FOX genes exhibited overlapping expression patterns in response to different cancer diseases. It is noteworthy that FOX genes exhibited overlapping expression patterns in response to brain tumor, adenoma, metastatic prostate cancer, renal cell carcinoma, acute myeloid leukemia, myeloma, B-cell lymphoma, papillary thyroid carcinoma, breast cancer, leiomyoma, oral squamous cell carcinoma, invasive ductal carcinoma (Table 1). For example, FOXE1 was overlapping expression in eight cancer diseases. FOXA2, FOXC1, FOXD3, FOXG1, FOXJ1 and FOXM1, were overlapping expression in seven cancer diseases.

Table 1. The Distribution of FOX Transcription Factor Family on the Scaffolds of Genome and Physico-chemical analysis in Human

| Gene | Chromosome | Site | Location | Length/aa | Molecular Weight/Kda | Isoelectric point | Instability index | Aliphatic index | Grand average hydropathicity | Nuclear location score |
|---------|------------|--------------|----------------------|-----------|----------------------|-------------------|-------------------|-----------------|------------------------------|------------------------|
| FOXA1 | 14 | NC_000014.9 | 37589552..37595120 | 472 | 49.1 | 8.93 | 55.56 | 50.61 | -0.483 | 10 |
| FOXA2 | 20 | NC_000020.11 | 22581004..22585463 | 463 | 48.9 | 8.82 | 65.88 | 49.96 | -0.532 | 10 |
| FOXA3 | 19 | NC_000019.10 | 45795710..45902604 | 350 | 37.1 | 7.01 | 55.93 | 60.57 | -0.447 | 10 |
| FOXB1 | 15 | NC_000015.10 | 59871343..60397986 | 325 | 35 | 9.66 | 65.89 | 71.32 | -0.279 | 9.9 |
| FOXB2 | 9 | NC_000019.12 | 77019655..770200953 | 432 | 45.6 | 9.55 | 61.54 | 65 | -0.372 | 9.9 |
| FOXC1 | 6 | NC_000006.12 | 1528364..2245634 | 553 | 56.8 | 8.7 | 65.39 | 54.72 | -0.534 | 9.9 |
| FOXC2 | 16 | NC_000016.10 | 86530176..86737841 | 501 | 53.6 | 8.68 | 53.6 | 60.3 | -0.588 | 9.9 |
| FOXD1 | 5 | NC_000005.10 | 73168253..73509715 | 465 | 46.1 | 5.03 | 70.37 | 68.19 | -0.215 | 10 |
| FOXD2 | 1 | NC_000001.11 | 47416072..47550750 | 495 | 48.7 | 6.76 | 55.24 | 63.84 | -0.163 | 9.9 |
| FOXD3 | 1 | NC_000001.11 | 63159083..63361181 | 478 | 47.6 | 6.01 | 53.49 | 71.55 | -0.181 | 9.9 |
| FOXD4 | 9 | NC_000009.12 | 45408..465259 | 439 | 47.3 | 9.38 | 74.03 | 68.18 | -0.575 | 9.9 |
| FOXD4L1 | 2 | NC_000002.12 | 113406388..113572564 | 408 | 43.6 | 9.36 | 71.37 | 68.09 | -0.554 | 10 |
| FOXD4L2 | 9 | NC_000009.11 | 42717234..42720342 | 416 | 45.9 | 9.74 | 70.8 | 67.69 | -0.614 | 9.9 |
| FOXD4L3 | 9 | NC_000009.12 | 68302867..68305084 | 417 | 45.8 | 9.82 | 72.74 | 68.25 | -0.579 | 10 |
| FOXD4L4 | 9 | NC_000009.12 | 65736314..65739422 | 416 | 45.9 | 9.74 | 70.8 | 67.69 | -0.614 | 9.9 |
| FOXD4L5 | 9 | NC_000009.12 | 65282101..65285209 | 416 | 45.8 | 9.58 | 70.35 | 67.69 | -0.59 | 9.9 |
| FOXD4L6 | 9 | NC_000009.12 | 41126251..41128975 | 417 | 45.8 | 9.76 | 72.39 | 68.01 | -0.576 | 9.9 |
| FOXE1 | 9 | NC_000009.12 | 97698872..97922570 | 373 | 38.1 | 9.62 | 59.99 | 57.94 | -0.279 | 10 |
| FOXE3 | 1 | NC_000001.11 | 47333797..47440691 | 319 | 33.2 | 9.72 | 72.06 | 71 | -0.25 | 10 |
| FOXF1 | 16 | NC_000016.10 | 86434844..86555235 | 379 | 40.1 | 9.24 | 62.23 | 54.43 | -0.468 | 9.9 |
| FOXF2 | 6 | NC_000006.12 | 961003..1515582 | 444 | 46 | 9.2 | 80.9 | 52.27 | -0.395 | 9.9 |
| FOXG1 | 14 | NC_000014.9 | 28593773..28832060 | 489 | 52.4 | 8.99 | 51.19 | 53.95 | -0.749 | 9.9 |
| FOXH1 | 8 | NC_000008.11 | 144428780..144507172 | 365 | 39.3 | 9.6 | 65.23 | 71.67 | -0.416 | 10 |
| FOXI1 | 5 | NC_000005.10 | 169637247..170199141 | 378 | 41 | 5.89 | 64.71 | 55.21 | -0.625 | 9.9 |
| FOXI2 | 10 | NC_000010.11 | 127737274..127741186 | 318 | 33 | 8.93 | 62.21 | 66.23 | -0.291 | 9.9 |
| FOXI3 | 2 | NC_000002.12 | 88448207..88452535 | 420 | 43.3 | 8.51 | 71.92 | 55.74 | -0.387 | 9.9 |
| FOXJ1 | 17 | NC_000017.11 | 76080993..76240367 | 421 | 45.2 | 5.04 | 56.8 | 71.54 | -0.439 | 9.9 |
| FOXJ2 | 12 | NC_000012.12 | 7994770..8097777 | 574 | 62.4 | 6.2 | 72.69 | 50 | -0.887 | 9.9 |
| FOXJ3 | 1 | NC_000001.11 | 42153421..42456267 | 622 | 69 | 6.59 | 60.88 | 60.05 | -0.784 | 10 |
| FOXK1 | 7 | NC_000007.14 | 4682299..4771443 | 733 | 75.5 | 9.41 | 67.98 | 74.15 | -0.17 | 10 |
| FOXK2 | 17 | NC_000017.11 | 82458184..82698722 | 660 | 69.1 | 9.56 | 57.53 | 74.55 | -0.361 | 9.9 |
| FOXL1 | 16 | NC_000016.10 | 86555320..87063991 | 345 | 36.5 | 9.64 | 53.77 | 66.96 | -0.481 | 10 |
| FOXL2 | 3 | NC_000003.12 | 138652698..139006268 | 376 | 38.8 | 9.26 | 66.04 | 55.35 | -0.445 | 9.9 |
| FOXM1 | 12 | NC_000012.12 | 2812621..3040676 | 748 | 82.7 | 8.57 | 76.13 | 75.37 | -0.609 | 9.9 |
| FOXN1 | 17 | NC_000017.11 | 28467778..28571869 | 648 | 68.9 | 5.93 | 62.97 | 64.35 | -0.462 | 9.9 |
| FOXN2 | 2 | NC_000002.12 | 47989625..48776517 | 431 | 47.2 | 5.98 | 49.44 | 73.16 | -0.565 | 10 |
| FOXN3 | 14 | NC_000014.9 | 88979098..89954777 | 468 | 51.5 | 6.71 | 65.6 | 56.5 | -0.859 | 9.9 |
| FOXN4 | 12 | NC_000012.12 | 109277978..109309220 | 517 | 55.2 | 5.93 | 65.03 | 73.83 | -0.36 | 9.9 |
| FOXO1 | 13 | NC_000013.11 | 40194509..40771211 | 655 | 69.7 | 6.28 | 61.9 | 57.13 | -0.571 | 2.5 |
| FOXO3 | 6 | NC_000006.12 | 108559823..108684769 | 673 | 71.3 | 4.98 | 66.77 | 62.11 | -0.594 | 6 |
| FOXO4 | X | NC_000023.11 | 70987306..71111631 | 505 | 53.7 | 5.13 | 66.38 | 72.89 | -0.45 | 4.8 |
| FOXO6 | 1 | NC_000001.11 | 41361656..41383591 | 492 | 50.6 | 5.25 | 58.65 | 69.72 | -0.362 | 6.1 |
| FOXP1 | 3 | NC_000003.12 | 70751067..71785206 | 677 | 75.3 | 6.19 | 60.95 | 75.23 | -0.647 | 8.7 |
| FOXP2 | 7 | NC_000007.14 | 113116718..115125475 | 740 | 82.6 | 6.03 | 78.39 | 74.73 | -0.743 | 8.9 |
| FOXP3 | X | NC_000023.11 | 49205063..49301464 | 431 | 47.2 | 9.52 | 55.68 | 73.41 | -0.353 | 3.4 |
| FOXP4 | 6 | NC_000006.12 | 41381392..41667655 | 680 | 73.5 | 5.97 | 65.4 | 70.93 | -0.574 | 7.2 |
| FOXQ1 | 6 | NC_000006.12 | 909119..1502550 | 403 | 41.5 | 9.52 | 67.45 | 69.58 | -0.318 | 9.9 |
| FOXR1 | 11 | NC_000011.10 | 118896140..119018347 | 292 | 33.3 | 9.3 | 86.35 | 63.53 | -0.757 | 5.3 |
| FOXR2 | X | NC_000023.11 | 55484616..55759333 | 311 | 35.9 | 4.92 | 77.51 | 64.28 | -0.785 | 4.4 |
| FOXS1 | 20 | NC_000020.11 | 31739101..31968710 | 330 | 35.4 | 9.28 | 63.82 | 53.33 | -0.492 | 9.9 |

FOXH1, *FOXJ3*, *FOXN2*, *FOXP1*, and *FOXP3* were overlapping expression in six cancer diseases. *FOXF2*, *FOXJ2*, *FOXX2*, *FOXO1*, and *FOXP2* were overlapping expression in five cancer diseases. *FOXBI*, *FOXC2*, *FOXD2*, *FOXII*, *FOXL2* and *FOXO4* were overlapping expression in four cancer diseases. *FOXA1*, *FOXD4*, *FOXE3*, *FOXF1*, *FOXLI*, *FOXNI*, and *FOXQ1* were overlapping expression in three cancer diseases. Several *FOX* genes in this study showed the similar expression pattern with previous reported and these genes have been

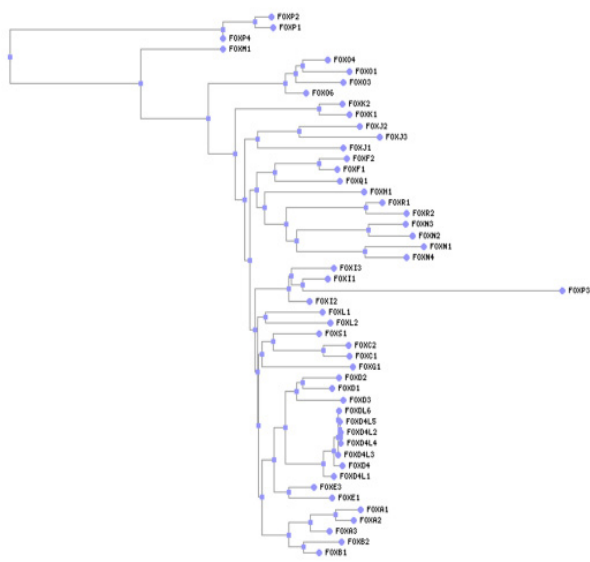


Figure 1. Phylogenetic Tree Analysis of Human FOX Genes. Multiple sequence alignment of full-length protein sequences of human FOX genes was performed using ClustalW2 program with default parameters. Phylogenetic tree was plotted using MEGA5.05 software by the Neighbor-joining method with 1000 bootstrap replicates

proved to play important roles in cancer diseases (Kato et al., 2013). Among them, *FOXA1* is upregulated in estrogen receptor (ER)-positive breast cancer (Schneider et al., 2006) and *FOXA1* point mutations also occur in prostate cancer (Grasso et al., 2012). Overexpression of *FOXA1* is associated with estrogen receptor (ER)-positive breast cancer (Hu et al., 2009), lung cancer, esophageal

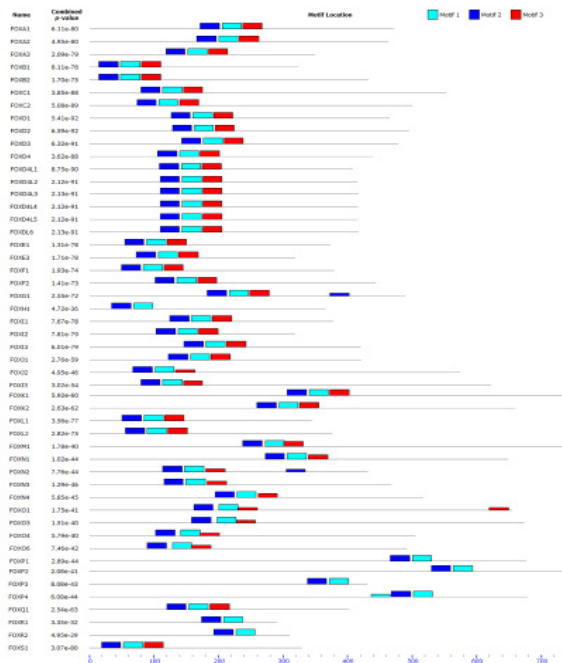


Figure 2. The Motif Analysis of Human FOX genes. The conserved motifs in full length human FOX proteins. The motifs were identified using Multiple Expectation Maximization for Motif Elicitation (MEME) program version 4.6.1 with default parameters and the maximum number of motifs to find was set to 12

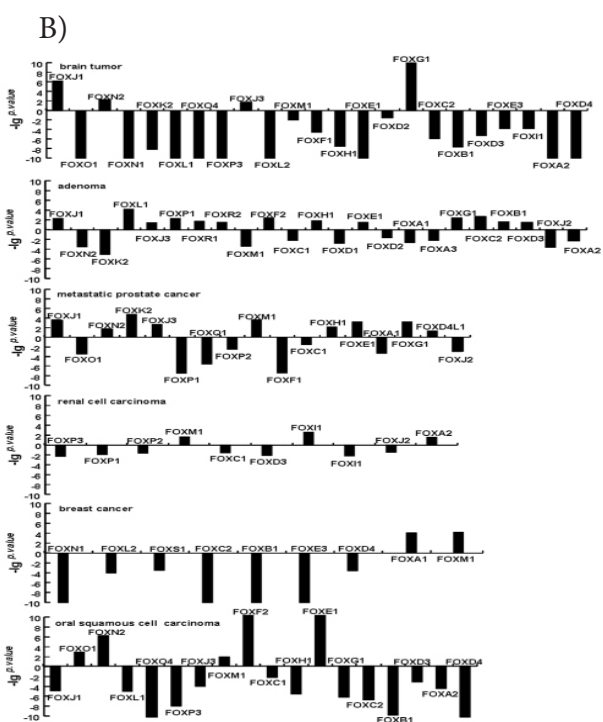
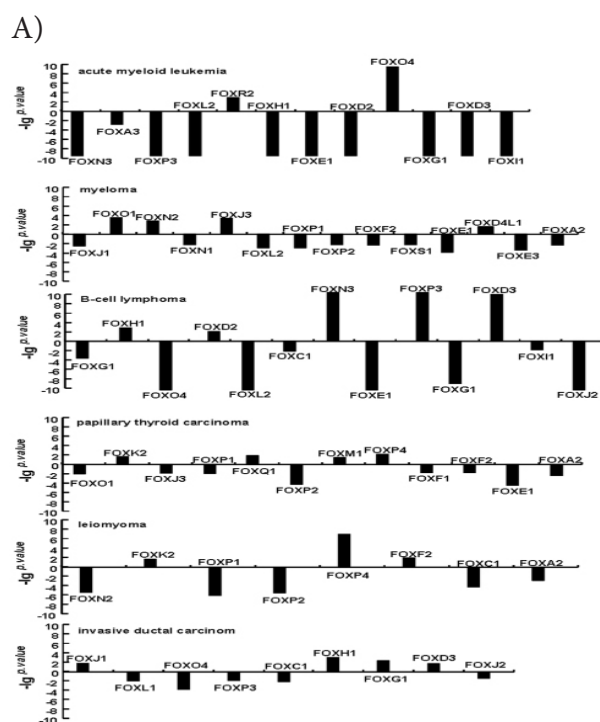


Figure 3. Differential Expressions of FOX Genes in Same Cancer Diseases. P-value was taken to the base 10 of a negative logarithm and copied out the number of P-value after changing. We set the up-regulated genes as positive number, while the down-regulated genes as negative number. Finally, we use each value and its corresponding FOX gene made a histogram

Table 2. Differential Expression of FOX Genes in Response to Cancer Diseases

| Gene | brain tumor | adenoma | metastatic prostate cancer | renal cell carcinoma | breast cancer | oral squamous cell carcinoma | acute myeloid leukemia | myeloma | B-cell lymphoma | papillary thyroid carcinoma | leiomyoma | invasive ductal carcinoma |
|---------|-------------|----------|----------------------------|----------------------|---------------|------------------------------|------------------------|---------|-----------------|-----------------------------|-----------|---------------------------|
| FOXA1 | - | -0.004 | -0.00034 | - | 6.00E-05 | - | - | - | - | - | - | - |
| FOXA2 | -1.00E-10 | -0.009 | - | 0.026 | - | -0.0000413 | - | -0.007 | - | -0.004 | -0.002 | - |
| FOXA3 | - | -0.01 | - | - | - | - | 0.002 | - | - | - | - | - |
| FOXB1 | -2.15E-08 | 0.028 | - | - | -1.00E-10 | -2.11E-08 | - | - | - | - | - | - |
| FOXC1 | - | -0.011 | -0.028 | -0.033 | - | -0.007 | - | - | -0.011 | - | -0.00008 | -0.01 |
| FOXC2 | -0.000001 | 0.003 | - | - | -1.00E-10 | -0.00000023 | - | - | - | - | - | - |
| FOXD1 | - | -0.003 | - | - | - | - | - | - | - | - | - | - |
| FOXD2 | -0.029 | -0.035 | - | - | - | - | 1.00E-10 | - | 0.011 | - | - | - |
| FOXD3 | -6.00E-06 | 0.037 | - | -0.011 | - | -0.000875 | -1.00E-10 | - | 2.40E-10 | - | - | 0.017 |
| FOXD4 | -1.00E-10 | - | - | - | -3.00E-04 | -1.00E-10 | - | - | - | - | - | - |
| FOXD4L1 | - | - | 0.048 | - | - | - | - | 0.026 | - | - | - | - |
| FOXE1 | -1.00E-10 | 0.037 | 0.000516 | - | - | 1.00E-10 | 1.00E-10 | -0.0002 | -1.00E-10 | -3.00E-05 | - | - |
| FOXE3 | -1.00E-04 | - | - | - | -1.00E-10 | - | - | -0.0007 | - | - | - | - |
| FOXF1 | -3.10E-04 | - | -2.26E-08 | - | - | - | - | - | - | -0.017 | - | - |
| FOXF2 | - | 0.005 | - | - | - | 1.00E-10 | - | -0.006 | - | -0.02 | 0.012 | - |
| FOXG1 | 1.00E-10 | 0.005 | 0.000501 | - | - | -0.00000082 | 1.00E-10 | - | -1.76E-09 | - | - | 0.004 |
| FOXH1 | - | 0.019 | 0.006 | - | - | -0.00000374 | 1.00E-10 | - | 0.002 | - | - | 0.001 |
| FOXI1 | -1.00E-04 | - | - | 0.003 | - | - | -1.00E-10 | - | -0.018 | - | - | - |
| FOXJ1 | 1.00E-06 | 0.007 | 0.00025 | - | - | -0.000016 | - | -0.004 | -0.0004 | - | - | 0.014 |
| FOXJ2 | - | 0.00058 | -0.001 | -0.039 | - | - | - | - | -1.00E-10 | - | - | -0.049 |
| FOXJ3 | 0.019 | 0.04 | 0.002 | - | - | -0.000135 | - | 0.00056 | - | -0.015 | - | - |
| FOXK2 | -6.21E+09 | -0.00002 | 0.0000124 | - | - | - | - | - | - | 0.025 | 0.024 | - |
| FOXL1 | -1.00E-10 | 0.00013 | - | - | - | -0.0000117 | - | - | - | - | - | - |
| FOXL2 | -1.00E-10 | - | - | - | - | - | -1.00E-10 | -0.002 | -1.00E-10 | - | - | - |
| FOXMI | -0.011 | -0.00076 | 0.000179 | 0.024 | 1.00E-05 | 0.015 | - | - | - | 0.038 | - | - |
| FOXN1 | -1.00E-10 | - | - | - | -1.00E-10 | - | - | -0.008 | - | - | - | - |
| FOXN2 | 0.005 | -0.00065 | 0.02 | - | - | 0.000001 | - | 0.002 | - | - | -0.00001 | - |
| FOXN3 | - | - | - | - | - | - | 1.00E-10 | - | 1.00E-10 | - | - | - |
| FOXO1 | 1.00E-10 | - | -0.00028 | - | - | 0.002 | - | 0.0004 | - | -0.01 | - | - |
| FOXO4 | -1.00E-10 | - | - | - | - | -1.00E-10 | 1.00E-10 | - | -1.00E-10 | - | - | - |
| FOXP1 | - | 0.006 | -1.69E-08 | -0.016 | - | - | - | -0.001 | - | -0.012 | -1.00E-06 | - |
| FOXP2 | - | 0 | -0.003 | -0.028 | - | - | - | 0.009 | - | -0.0001 | -4.00E-06 | - |
| FOXP3 | -1.00E-10 | - | - | -0.006 | - | -1.65E-08 | 1.00E-10 | - | 1.00E-10 | - | - | 0.018 |
| FOXP4 | - | - | - | - | - | - | - | - | - | 0.007 | 1.00E-07 | - |
| FOXQ1 | - | - | -0.000002 | - | -0.025 | - | - | - | - | 0.013 | - | - |
| FOXR1 | - | 0.023 | - | - | - | - | - | - | - | - | - | - |
| FOXR2 | - | 0.032 | - | - | - | - | 0.000714 | - | - | - | - | - |
| FOXS1 | - | - | - | - | -3.00E-04 | - | - | -0.009 | - | - | - | - |

*The P-value of differential expressions of FOX genes in response to cancer diseases. The up-regulated genes as positive number and the down-regulated genes as negative number

cancer (Lin et al., 2002), and anaplastic thyroid cancer (Nucera et al., 2009). *FOXMI* is overexpressed in basal-type breast cancer (Curtis et al., 2012), non-Hodgkins lymphoma (Green et al., 2011), and malignant peripheral nerve sheath tumors (Yu et al., 2011). Down-regulation of *FOXMI* in laryngeal squamous carcinoma cells resulted in an inhibition of cell proliferation, migration, and invasion, which indicated that inhibition of *FOXMI* represents an attractive target for cancer therapy (Chen et al., 2011). Xu et al. (2012) indicated that *FOXMI* expression in tumor tissue had clinical significance for predicting recurrence in patients with non-small cell lung cancer after tumor surgery. *FOXO1* gene is located within the commonly deleted region in prostate cancer and the expression *FOXO1* is frequently down regulated in prostate cancer (Dong et al., 2006). *FOXO4* is fused to the *MLL* gene as a result of chromosomal translocation in acute lymphoblastic leukemia (ALL) (Dansen et al., 2008). *FOXC2* acts as regulators of Lymphangiogenesis and Angiogenesis in Oral Squamous Cell Carcinoma (Sasahira et al., 2014). The expression of *FOXC2* gene also increases with malignancy of Cervical Cancer, especially with blood vessel hyperplasia and invasion degree (Zheng et al., 2014). *FOXL1* plays an inhibitory role in renal tumor

progression and over-expression of *FOXL1* can inhibit tumor cell growth, migration and invasion in renal cancer cells (Yang et al., 2013). The responsiveness of these cancer-responsive *FOX* genes with overlapping expression patterns might imply that they have pleiotropic biological functions in cancer diseases, therefore, the detailed functional analysis using mutants and/or overexpression transgenic lines is required. Taken together, the pleiotropic feature of the biological functions of the *FOX* genes make them become excellent candidates in efforts aimed to give medical treatment for cancer diseases at genetic.

The expression characteristics of *FOX* genes in the same kind of cancer disease were also analyzed (Figure 2, and Figure 3). Twenty-three *FOX* genes (4 up-regulated and 19 down-regulated) were differentially expressed in brain tumor. It is noted that most of them were down-regulated expression in the brain tumor indicated that the *FOX* family genes may play important roles in brain tumor. The study suggested that *FOXD2* and *FOXE3* maybe play suppressor roles in the meningioma tumor, which is a kind of brain tumor (Sulman et al., 2004). Twenty-three *FOX* genes (13 up-regulated and 10 down-regulated) were differentially expressed in adenoma. Seventeen *FOX* genes (9 up-regulated and 8 down-regulated) were found

to be differentially expressed in metastatic prostate cancer. Among them, *FOXA1* (Grasso et al., 2012), *FOXMI* (Lokody., 2014), and *FOXO1* (Dong et al., 2006) have been reported to play key roles in prostate cancer. Ten *FOX* genes (3 up-regulated and 7 down-regulated) were found to be differentially expressed in renal cell carcinoma. Nine *FOX* genes (2 up-regulated and 7 down-regulated) were differentially expressed in breast cancer. For example, *FOXA1* (Schneider et al., 2006; Hu et al., 2009), and *FOXMI* (Curtis et al., 2012) were upregulated expression in breast cancer, which play an important roles in breast cancer. In addition, eighteen *FOX* genes (5 up-regulated and 13 down-regulated) were found to be differentially expressed in oral squamous cell carcinoma. Twelve *FOX* genes (2 up-regulated and 10 down-regulated) were found to be differentially expressed in acute myeloid leukemia. Fourteen *FOX* genes (4 up-regulated and 10 down-regulated) were found to be differentially expressed in myeloma. Thirteen *FOX* genes (5 up-regulated and 8 down-regulated) were found to be differentially expressed in B-cell lymphoma. Twelve *FOX* genes (4 up-regulated and 8 down-regulated) were found to be differentially expressed in papillary thyroid carcinoma. Eight *FOX* genes (3 up-regulated and 5 down-regulated) were found to be differentially expressed in leiomyoma. Nine *FOX* genes (4 up-regulated and 5 down-regulated) were found to be differentially expressed in invasive ductal carcinoma. All of these results showed that multiple genes may have the synergy or antagonism effects in the same kind of cancer disease, which suggested that the *FOX* genes involved redundant function in the cancer disease.

In conclusions, the present study, we analyzed the expression of *FOX* genes in different cancer diseases. The cancer-responsive *FOX* genes with overlapping expression patterns might imply that they have pleiotropic biological functions in cancer diseases. The pleiotropic feature of the biological functions of the *FOX* genes make them become excellent candidates in efforts aimed to give medical treatment for cancer diseases at genetic. The cancer-responsive *FOX* genes are also different expression in the same disease, which indicated that they may have the synergy or antagonism effects in the same kind of cancer disease. In all, the results of this study provide clues for further functional analysis of *FOX* genes, especially for the pleiotropic biological functions and the crosstalk of *FOX* genes in cancer diseases of human

Acknowledgements

This research is supported by the National Natural Science Foundation of China (No: 31400315), and the Natural Science Foundation of Jiangsu Province (Nos: BK20130389 and BK20130397).

References

- Bell R, Brice G, Child AH, et al (2001). Analysis of lymphoedema-distichiasis families for *FOXC2* mutations reveals small insertions and deletions throughout the gene. *Hum Genet*, **108**, 546-51.
- Benayoun BA, Caburet S, Veitia RA (2011). Forkhead transcription factors: key players in health and disease. *Trends Genet*, **27**, 224-32.
- Carlsson P, Mahlapuu M (2002). Forkhead transcription factors: key players in development and metabolism. *Dev Biol*, **250**, 1-23.
- Chen W, Yuan K, Tao ZZ, et al (2011). Deletion of Forkhead Box M1 transcription factor reduces malignancy in laryngeal squamous carcinoma cells. *Asian Pac J Cancer Prev*, **12**, 1785-8.
- Crisponi L, Deiana M, Loi A, et al (2001). The putative forkhead transcription factor *FOXL2* is mutated in blepharophimosis/ptosis/epicanthus inversus syndrome. *Nat Genet*, **27**, 159-66.
- Curtis C, Shah SP, Chin SF, et al (2012). The genomic and transcriptomic architecture of 2,000 breast tumours reveals novel subgroups. *Nature*, **486**, 346-52.
- Dansen TB, Burgering BM (2008). Unravelling the tumor-suppressive functions of *FOXO* proteins. *Trends Cell Biol*, **18**, 421-9.
- De BE, Dixon MJ, Small KW, et al (2001). Spectrum of *FOXL2* gene mutations in blepharophimosis-ptosis-epicanthus inversus (BPES) families demonstrates a genotype-phenotype correlation. *Hum Mol Genet*, **10**, 1591-600.
- Dong XY, Chen C, Sun X, et al (2006). *FOXO1A* is a candidate for the 13q14 tumor suppressor gene inhibiting androgen receptor signaling in prostate cancer. *Cancer Res*, **66**, 6998-7006.
- Grasso CS, Wu YM, Robinson DR, et al (2012). The mutational landscape of lethal castration-resistant prostate cancer. *Nature*, **487**, 239-43.
- Green MR, Aya-Bonilla C, Gandhi MK, et al (2011). Integrative genomic profiling reveals conserved genetic mechanisms for tumorigenesis in common entities of non-Hodgkin's lymphoma. *Genes Chromosomes Cancer*, **50**, 313-26.
- Hannenhalli S, Kaestner KH (2009). The evolution of *FOX* genes and their role in development and disease. *Nat Rev Genet*, **10**, 233-40.
- Hu X, Stern HM, Ge L, et al (2009). Genetic alterations and oncogenic pathways associated with breast cancer subtypes. *Mol Cancer Res*, **7**, 511-22.
- Kaestner KH, Knochel W, Martinez DE (2000). Unified nomenclature for the winged helix/forkhead transcription factors. *Genes Dev*, **14**, 142-6.
- Katoh M, Igarashi M, Fukuda H, et al (2013). Cancer genetics and genomics of human *FOX* family genes. *Cancer Lett*, **328**, 198-206.
- Lehmann OJ, Ebenezer ND, Jordan T, et al (2000). Chromosomal duplication involving the forkhead transcription factor gene *FOXC1* causes iris hypoplasia and glaucoma. *Am J Hum Genet*, **67**, 1129-35.
- Lin L, Miller CT, Contreras JI, et al (2002). The hepatocyte nuclear factor 3 alpha gene, HNF3alpha (*FOXA1*), on chromosome band 14q13 is amplified and overexpressed in esophageal and lung adenocarcinomas. *Cancer Res*, **62**, 5273-9.
- Lokody I (2014). Signalling: *FOXMI* and CENPF: co-pilots driving prostate cancer. *Nat Rev Cancer*, **14**, 450-1.
- Mazet F, Yu JK, Liberles DA, et al (2003). Phylogenetic relationships of the *FOX* (Forkhead) gene family in the Bilateria. *Gene*, **316**, 79-89.
- Nucera C, Eeckhoutte J, Finn S, et al (2009). *FOXA1* is a potential oncogene in anaplastic thyroid carcinoma. *Clin Cancer Res*, **15**, 3680-9.
- Pohl BS, Knochel W (2005). Of *FOX* and Frogs: *FOX* (fork head/winged helix) transcription factors in *Xenopus* development. *Gene*, **344**, 21-32.
- Sasahira T, Ueda N, Yamamoto K, et al (2014). Prox1 and *FOXC2* act as regulators of lymphangiogenesis and angiogenesis in

- oral squamous cell carcinoma. *PLoS One*, **9**, 92534.
- Schneider J, Ruschhaupt M, Buness A, et al (2006). Identification and meta-analysis of a small gene expression signature for the diagnosis of estrogen receptor status in invasive ductal breast cancer. *Int J Cancer*, **119**, 2974-9.
- Sulman EP, White PS, Brodeur GM (2004). Genomic annotation of the meningioma tumor suppressor locus on chromosome 1p34. *Oncogene*, **23**, 1014-20.
- Tu Q, Brown CT, Davidson EH, et al (2006). Sea urchin Forkhead gene family: phylogeny and embryonic expression. *Dev Biol*, **300**, 49-62.
- Wijchers PJ, Burbach JP, Smidt MP (2006). In control of biology: of mice, men and FOXes. *Biochem J*, **397**, 233-46.
- Wotton KR, Shimeld SM (2006). Comparative genomics of vertebrate FOX cluster loci. *BMC Genomics*, **7**, 271.
- Xu N, Wu SD, Wang H, et al (2012). Involvement of FOXM1 in non-small cell lung cancer recurrence. *Asian Pac J Cancer Prev*, **13**, 4739-43.
- Yang FQ, Yang FP, Li W, et al (2013). FOXI1 inhibits tumor invasion and predicts outcome in human renal cancer. *Int J Clin Exp Pathol*, **7**, 110-22.
- Yu J, Deshmukh H, Payton JE, et al (2011). Array-based comparative genomic hybridization identifies CDK4 and FOXM1 alterations as independent predictors of survival in malignant peripheral nerve sheath tumor. *Clin Cancer Res*, **17**, 1924-34.
- Zheng CH, Quan Y, Li YY, et al (2014). Expression of transcription factor FOXC2 in cervical cancer and effects of silencing on cervical cancer cell proliferation. *Asian Pac J Cancer Prev*, **15**, 1589-95.