

Molecular Characterization of *Gastrothylax crumenifer* (Platyhelminthes: Gastrothylacidae) from Goats in the Western Part of India by LSU of Nuclear Ribosomal DNA

Ashwani Kumar¹, Anshu Chaudhary^{1,2,*}, Chandni Verma¹, Hridaya Shanker Singh¹

¹Molecular Taxonomy Laboratory, Department of Zoology, Chaudhary Charan Singh University, Meerut (U.P.) 250004, India; ²Veterinary Medical Research Institute, Hungarian Academy of Sciences, PO Box 18, H-1581 Budapest, Hungary

Abstract: The rumen parasite, *Gastrothylax crumenifer* (Platyhelminthes: Gastrothylacidae), is a highly pathogenic trematode parasite of goat (*Capra hircus*). It sucks blood that causes acute disease like anemia, and severe economic losses occur due to morbidity and mortality of the ruminant infected by these worms. The study of these rumen paramphistomes, their infection, and public health importance remains unclear in India especially in the western part of state Uttar Pradesh (U.P.), Meerut, India, where the goat meat consumption is very high. This paper provides the molecular characterization of *G. crumenifer* recovered from the rumen of *Capra hircus* from Meerut, U.P., India by the partial sequence of 28S rDNA. Nucleotide sequence similarity searching on BLAST of 28S rDNA from parasites showed the highest identity with those of *G. crumenifer* from the same host *Capra hircus*. This is the first report of molecular identification of *G. crumenifer* from this part of India.

Key words: *Gastrothylax crumenifer*, goat (*Capra hircus*), ribosomal DNA, Uttar Pradesh, India

The rumen worm, *Gastrothylax crumenifer* [1,2], is a blood-sucking trematode parasite found in the rumen of *Capra hircus*, *Bos indicus*, *Bubalus bubalis*, and *Ovis aries*. The infection causes anemia and accidental death of the animals which is serious and a major animal health problem [3]. The prevalence of this parasite is very high in tropical countries [4,5]. Some reports specified that, in tropical and subtropical areas, *Paramphistomum cervi*, *P. Epiclitum*, and *G. crumenifer* are the most prevalent parasites which cause the disease in ruminants [6-8].

Goats are a treasure home for different helminth parasites, thus, it is difficult to discriminate them because of their morphological similarity. Identification of parasites is usually done by microscopic observations of parasite's characters like the acetabulum, pharynx, and terminal genitalium. For any parasitic infection, accurate identification of the species involved is the first vital step for subsequent studies in the field of epidemiology, physiology, and immunology of the parasite. Therefore, it

is important to identify the species found in goat on the basis of molecular characterization. Since *G. crumenifer* has been regarded as a valid species of the genus *Gastrothylax* on the basis of morphological characters [9]. It has been recorded from various localities in India, such as Uttar Pradesh, Jammu and Kashmir, Meghalaya, Himachal Pradesh, and Rajasthan [10-14], but no previous molecular studies have been done in Meerut region. Paramphistomiasis is important diseases of ruminants despite that little attention have received with respect to use of molecular tools for their validation, particularly in Indian region.

In the present work, we report molecular identification of *G. crumenifer* on the basis of sequences of the large subunit (LSU) ribosomal RNA (rRNA) 28S gene by using the PCR amplification and sequence analysis. The LSU or 28S rRNA is often regarded as a good phylogenetic marker, and its usage has provided a more fruitful resolution among the Metazoa [15]. It has been widely used to rectify species phylogenies of digenetic trematodes [16-18].

Flukes were collected from the rumens of freshly slaughtered goats at abattoirs located in the Sotiganj, Meerut (29°01' N, 77°45' E) of state U.P., western India. The flukes were washed extensively in saline solution, and some were stored at -20°C

•Received 3 May 2014, revised 22 July 2014, accepted 26 August 2014.

*Corresponding author (anshu8282@rediffmail.com)

© 2014, Korean Society for Parasitology and Tropical Medicine

This is an Open Access article distributed under the terms of the Creative Commons Attribution Non-Commercial License (<http://creativecommons.org/licenses/by-nc/3.0>) which permits unrestricted non-commercial use, distribution, and reproduction in any medium, provided the original work is properly cited.

until DNA extraction and molecular analysis were carried out. Others were used for morphological identification by optical and scanning electron microscopy (SEM). For morphological studies, the parasites were fixed in 70% ethanol for 24 hr and washed several times with water. They were then stained with Borax carmine, dehydrated through increasing grades of ethanol, and mounted in Canada balsam. The slides have been deposited in the Museum, Department of Zoology, Chaudhary Charan Singh University, U.P., India, under the voucher no. HS.TR/2013/01. For SEM, the specimens were fixed overnight with 3.5% glutaraldehyde. After then, the specimens were dehydrated through graded alcohol series and dried, mounted on aluminum stubs, and sputter coated with gold for 1 min. The observation and image acquisition was made in a JEOL-NeoScope JCM-5000 (NIKON-Type 108) SEM at 10 kV, according to the manufacturer's instructions.

Three flukes from each 2 ruminant in the study were used for extraction of genomic DNA. The genomic DNA extraction was performed on individual flukes using the Qiagen Tissue kit (QIAGEN, Hilden, Germany) according to the instructions

specified by the manufacturer and stored at -20°C . The 28S sequences was amplified by PCR using the primers 28S F (5'-TAGGTCGACCCGCTGAAYTTAAGCA-3') as described by Littlewood et al. [19] and 28S R (5'-GCTATCCTGAGGGAAACTTCG-3') as described by Pawlowski et al. [20] with the annealing temperature 57°C . The PCR cycle, product purification, and sequencing reaction were performed as described by Chaudhary and Singh [21] with the same primers used in this work. Sequences of 28S were aligned using the programmes Clustal W and MUSCLE (3.7) for phylogenetic analysis. Pairwise distances were calculated using the Tamura-Nei substitution model using the software MEGA 6 [22]. Subsequent phylogenetic analysis of rDNA sequences was performed using the PhyML method with bootstrap values for $n = 100$ replicates [23]. The obtained nucleotide sequence is available in GenBank, NCBI under accession no. KJ559529.

The stained slides of the parasite were examined using light microscopy. The SEM images show the full view of the worm (Fig. 1), with its oral and posterior suckers (acetabulum). The sequences from each DNA sample were identical without any

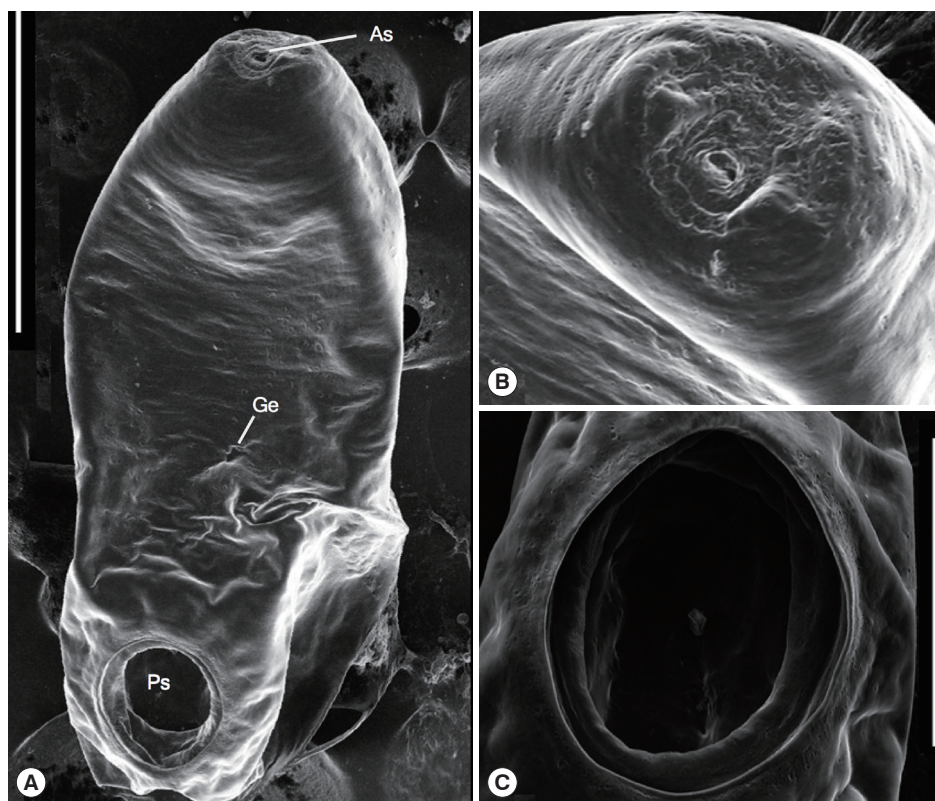


Fig. 1. (A) Whole-body topography of *Gastrothylax crumenifer* (Creplin, 1847) Poirier, 1883. (B) An enlarged view of the anterior sucker. (C) An enlarged view of the posterior sucker (acetabulum). Scale bars = 500 μm (A), 100 μm (B, C). As, anterior sucker; Ge, genital canal; Ps, posterior sucker.

ambiguities. The complete sequence of the 28S from *G. crumenifer* was 1,293 bp long. The nucleotide sequence similarity search for 28S rDNA from the parasites of Meerut region showed 98% identity with the same species (JX518970) in GenBank collected from the same host from northern part of India (Fig. 2). Beside the host *C. hircus*, from India, *G. crumenifer* was also reported from *B. indicus*, *B. Frontalis*, and *B. bubalis*. We also compared our sequences with the sequence data of *G. crumenifer* (JX518968, JX518960, JX518971, JX518969) obtained from these hosts to reveal the molecular characteristics (Fig. 2). Based on phylogenetic analyses, *G. crumenifer* was grouped with the same species isolated from *C. hircus* (JX518970) (Fig. 2), both isolates were genetically close to each other. Maximum likelihood and Bayesian inference both placed *G. crumenifer* (KJ559529 and JX518970) in a same clade (Fig. 2) and gave highly similar tree topology for the position of *G. crumenifer* (Fig. 2). The Gastrothylacidae species forming a well-supported clade (100%) with 1 species of the Paramphistomatidae (JQ670847) (Fig. 2).

Among ruminants, of the different paramphistomoid families, various species of parasites mainly the members of Paramphistomidae and Gastrothylacidae, cause a disease collectively known as paramphistomiasis [24]. The family Gastrothylacidae is composed of 4 genera viz., *Carmyerius* Stiles and Goldberger, 1910 [25], *Fischoederius* Stiles and Goldberger, 1910 [25], *Gastrothylax* Poirier, 1883 [2], and *Velasquezotrema*

Eduardo and Javellana, 1987 [26]. Due to thick bodies, it is hard to see the internal parts of these worms; that is why it is difficult to identify these worms. Morphological differences based on stained and mounted specimens have been widely used for discrimination of platyhelminthes species [27], but it is not possible to distinguish them on the basis of clinical, pathological, or immunological findings as they are morphologically very similar [28]. Therefore, in order to gain better understanding of the phylogeny of this group of parasites needs the use of molecular tools.

The results of the present study confirmed that 28S ribosomal DNA region is a useful molecular marker for species identification and platyhelminthes phylogeny [29-32]. Phylogenetic analyses results based on 28S sequences revealed that *G. crumenifer* from Meerut is closely related with the *G. crumenifer* obtained from Shillong, and *G. crumenifer* from infected goats at Meerut region showed to be identical to other *G. crumenifer* corresponding sequences in GenBank, in accordance with previous studies [32,33]. It is also confirmed that there is a highly conserved character of the 28S gene among *G. crumenifer* isolates from different regions of India [32,33]. The closeness of *G. crumenifer* from Meerut and Shillong regions is not surprising as they are the same species from 2 distantly apart locations in India (western India and northern India) and depicted within the same clade. The results also corroborate that the *G. crumenifer* species prevalent in India have not

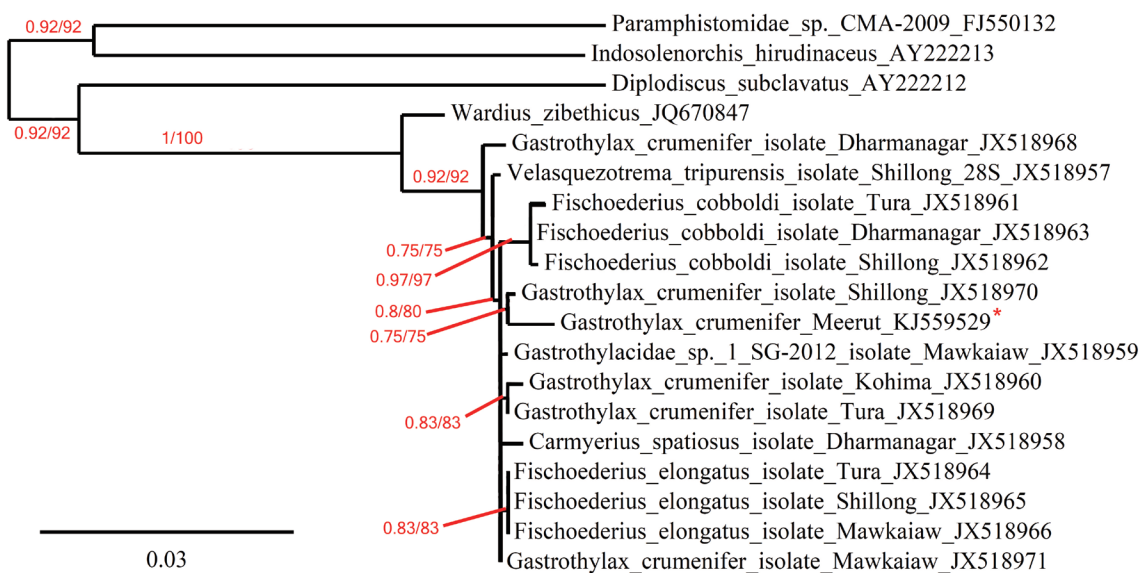


Fig. 2. Phylogenetic tree based on 28S sequence data and the numbers represent Bayesian probabilities/bootstap values from 100 replicates (maximum likelihood). Bootstap values of <50% are not shown. Asterisks shows the species sequenced in this study.

been identified properly due to the lack of genetic data. To determine the correct phylogeny and identification between the related species to this genus, further studies with additional molecular markers are needed.

This study reports the first molecular diagnosis and characterization of *G. crumenifer* from Meerut region, U.P., India. The current study is the first step toward expanding our knowledge of paramphistome fauna in this area. However, further studies are required to detect other paramphistome species, which may be concurrently infecting the same host or different hosts. Additional epidemiological and experimental studies must be undertaken to obtain specimens from other host samples from Meerut region, and further researches are required to determine the presence or absence of other species of paramphistomes in this region.

ACKNOWLEDGMENTS

We wish to acknowledge the support of the Head, Department of Zoology, Chaudhary Charan Singh University, Meerut (U.P.), India, for assistance. This work was funded by a grant from the Junior Research Fellowship (JRF) Grant under Rajiv Gandhi National Fellowship (RGNF) (grant no. F1-17.1/2013-14/RGNF-2013-14-SC-UTT-48647/(SA-3rd/website) to AK by University Grants Commission (UGC), New Delhi, India.

CONFLICT OF INTEREST

Authors declare that they have no conflict of interests.

REFERENCES

- Creplin F. Beschreibung zweier neuen Amphistomen-Arten aus dem zebu-Ochsen. *Arch Naturgesch* 1847; 13: 30-35.
- Poirier MJ. Description d'helminthes nouveaux du *Palomia frontalis*. *Bull Soc Philomat Paris* 1883; 7: 73-80.
- Hanna REB, Williamson DS, Mattison RC, Nizami WA. Seasonal reproduction in *Paramphistomum epiclitum* and *Gastrothylax crumenifer*, rumen paramphistomes of the Indian water buffalo and comparison with the biliary paramphistome *Gigantocotyle explanatum*. *Int J Parasitol* 1988; 18: 513-521.
- Rangel-Ruiz LJ, Albores-Brahms ST, Gamboa-Aguilar J. Seasonal trends of *Paramphistomum cervi* in Tabasco, Mexico. *Vet Parasitol* 2003; 116: 217-222.
- Ahmad T, Reshi ML, Cheshi MZ, Tanveer S, Shah ZA. A case report of *Gastrothylax crumenifer* incidence in sheep in Kashmir Valley. *Iraq J Vet Sci* 2013; 27: 71-72.
- Gupta PP, Singh B, Dutt SC. Note on amphistomiasis in an adult buffalo. *Indian Vet J* 1978; 55: 491-492.
- Wang CR, Qiu JH, Zhu XQ, Han XH, Ni HB, Zhao JP, Zhou QM, Zhang HW, Lun ZR. Survey of helminths in adult sheep in Heilongjiang Province, People's Republic of China. *Vet Parasitol* 2006; 140: 378-382.
- Panyarachun B, Ngamniyom A, Sobhon P, Anuracpreeda P. Morphology and histology of the adult *Paramphistomum gracile* Fischöeder, 1901. *J Vet Sci* 2013; 14: 425-432.
- Sey O. Revision of the family Gastrothylacidae Stiles et Goldberger, 1910 (Trematoda: Paramphistomata). *Acta Zool Acad Sci Hung* 1983; 29: 223-252.
- Srivastava HD. A survey of the incidence of helminth infection in India at the Imperial Veterinary Research Institute, Izatnagar. *Indian J Vet Sci Anim Husband* 1946; 15: 146-148.
- Bali HS. A survey of helminth parasites of sheep (*Ovis aries*) in Jammu and Kashmir. *J Anim Health Product* 1976; 6: 25-32.
- Soota TD, Ghosh RK. On some trematodes from Meghalaya. *Rec Zool Surv India* 1977; 73: 111-122.
- Tandon V, Sharma V. Amphistome fauna of ruminants in Himachal Pradesh. *Indian J Parasitol* 1981; 5: 241-245.
- Swarnakar G, Roat K, Sanger B, Kumawat A. Anthelmintic effect of *Trigonella foenum-graecum* on tegument of *Gastrothylax crumenifer* in cattle of Udaipur, India. *Int J Curr Microbiol App Sci* 2014; 3: 599-606.
- Medina M, Collins AG, Silberman JD, Sogin ML. Evaluating hypotheses of basal animal phylogeny using complete sequences of large and small subunit rRNA. *Proc Nat Acad Sci USA* 2001; 98: 9707-9712.
- Snyder SD, Tkach VV. Phylogenetic and biogeographical relationships among some holarctic frog lung flukes (Digenea: Haematoloechidae). *J Parasitol* 2001; 87: 1433-1440.
- Tkach VV, Pawlowski J, Mariaux J, Swiderski Z. Molecular phylogeny of the suborder Plagiorchiata and its position in the system of Digenea. In Littlewood DTJ, Bray RA eds, *Interrelationships of the Platyhelminthes*. London, UK. Taylor and Francis. 2001, pp 186-193.
- León-Règagnon V, Paredes-Calderón EL. *Haematoloechus danbrooksi* n. sp (Digenea: Plagiorchioidea) from *Rana vaillantii* from Los Tuxtlas, Veracruz, Mexico. *J Parasitol* 2002; 88: 1215-1221.
- Littlewood DT, Curini-Galletti M, Herniou EA. The interrelationships of Proseriata (Platyhelminthes: Seriata) tested with molecules and morphology. *Mol Phylogenet Evol* 2000; 16: 449-466.
- Pawlowski J, Bolivar I, Guiard-Maffia J, Gouy M. Phylogenetic position of foraminifera inferred from LSU rRNA gene sequences. *Mol Biol Evol* 1994; 11: 929-938.
- Chaudhary A, Singh HS. Phylogenetic study of nine species of freshwater monogeneans using secondary structure and motif prediction from India. *Bioinformatics* 2012; 8: 862-869.
- Tamura K, Stecher G, Peterson D, Filipinski A, Kumar S. MEGA6: Molecular Evolutionary Genetics Analysis version 6.0. *Mol Biol Evol* 2013; 30: 2725-2729.
- Dereeper A, Guignon V, Blanc G, Audic S, Buffet S, Chevenet F,

- Dufayard JF, Guindon S, Lefort V, Lescot M, Claverie JM, Gascuel O. Phylogeny.fr: robust phylogenetic analysis for the non-specialist. *Nucleic Acids Res* 2008; 36: W465-W469.
24. Sanabria REF, Romero JR. Review and update of paramphistomosis. *Helminthologia* 2008; 45: 64-68.
25. Stiles CW, Goldberger J. A study of the anatomy of *Watsonius* (n.g.) *watsoni* of man and of nineteen allied species of mammalian trematode worms of the superfamily Paramphistomoidea. *Bull Hyg Lab (Public Health and Marine-Hospital Service of the United States)*, 1910, No. 60, p 259.
26. Eduardo SL, Javellana CRH. A new genus, *Velasquezotrema*, for *Fischoederius brevisaccus* Eduardo, 1981. *Philipp J Vet Med* 1987; 24: 29-34.
27. Miyazaki I. Lung flukes in the world. Morphology and life history. In Sasa M ed, *A symposium on epidemiology of parasitic diseases*. Tokyo, Japan. International Medicine Foundation of Japan. 1974, pp 101-135.
28. Lotfy WM, Hillyer GV. *Fasciola* species in Egypt. *Exp Pathol Parasitol* 2003; 11: 9-22.
29. Jovelín R, Justine JL. Phylogenetic relationships within the polyopisthocotylean monogeneans (Platyhelminthes) inferred from partial 28S rDNA sequences. *Int J Parasitol* 2001; 31: 393-401.
30. Choudhury A, Rosas Valdez R, Johnson RC, Hoffmann B, Pérez-Ponce de León G. The phylogenetic position of Allocreadiidae (Trematoda: Digenea) from partial sequences of the 18S and 28S ribosomal RNA genes. *J Parasitol* 2007; 93: 192-196.
31. Atopkin DM. Genetic characterization of the *Psilotrema* (Digenea: Psilostomatidae) genus by partial 28S ribosomal DNA sequences. *Parasitol Int* 2011; 60: 541-543.
32. Shylla JA, Ghatani S, Tandon V. Utility of divergent domains of 28S ribosomal RNA in species discrimination of paramphistomes (Trematoda: Digenea: Paramphistomoidea). *Parasitol Res* 2013; 112: 4239-4253.
33. Ghatani S, Shylla JA, Tandon V, Chatterjee A, Roy B. Molecular characterization of pouched amphistome parasites (Trematoda: Gastrothylacidae) using ribosomal ITS2 sequence and secondary structures. *J Helminthol* 2012; 86: 117-124.