



Effect of High Dietary Carbohydrate on the Growth Performance and Physiological Responses of Juvenile Wuchang Bream, *Megalobrama amblycephala*

C. P. Zhou¹, X. P. Ge^{1,2,*}, B. Liu^{1,2}, J. Xie^{1,2}, and L. H. Miao²

¹ Wuxi Fisheries College, Nanjing Agricultural University, Wuxi 214081, China

ABSTRACT: An optimum dietary carbohydrate content is important for maximum fish growth. In this study, we fed Wuchang bream (*Megalobrama amblycephala*) with either control diet (30.42%) or high carbohydrate diet (52.92%) for 90 d. Fish were fed to apparent satiation three times daily in an aquarium with automatic temperature control and circulated water. Growth performance, plasma biochemical parameters, hepatic morphology and enzyme activities were determined. It was shown that compared to fish fed control diet, fish fed high carbohydrate diet had higher plasma triglyceride and cortisol levels for d 90, and lower alkaline phosphatase level for d 45, lower hepatic superoxide dismutase and total antioxidative capacity for d 90, higher malondialdehyde for d 45 and glycogen content for d 45 and 90 ($p < 0.05$). Histological and transmission electron microscopy studies showed that hepatocytes of fish fed high carbohydrate diet contained large lipid droplets, causing displacement of cellular organelles to periphery of hepatocytes. The relative level of hepatic heat shock protein 70 (HSP70) mRNA of Wuchang bream fed high carbohydrate diet was significantly higher than that of fish fed the control diet for 90 d ($p < 0.05$). These changes led to decreased specific growth rate and increased feed conversion ratio ($p < 0.05$). Upon hypoxia challenge, fish fed high carbohydrate diet had higher cumulative mortality than those fed the control diet ($p < 0.05$). These results suggested that high dietary carbohydrate (52.92%) was detrimental to the growth performance and health of Wuchang bream. (**Key Words:** *Megalobrama amblycephala*, High Dietary Carbohydrate, Growth Performance, Plasma Biochemical Parameters, Hepatic Antioxidant Abilities, Histology, Expression of HSP70)

INTRODUCTION

Wuchang bream (*Megalobrama amblycephala*) is a Chinese freshwater herbivorous species (Ke, 1975) with high potential for aquaculture. This fish was originally found in Newshan Lake and Yuli Lake. Its main distribution is in the mid reach of the Yangtze River, China (Zhu, 1995). Due to the merits of this species including tender flesh, fast growth, feeding on natural foods, high disease resistance, economic profitability, and cultural values (Ke, 1986; Zhou et al., 2008; Li et al., 2010), Wuchang bream is widely cultured in China with the output of 625,789 ton in 2009; an increase of 31.50% in the past decade. This species has

been introduced to North America (northern Canada to southern Mexico), Africa, Europe and other Asian countries. It can adapt well to local environment, being compatible with native species, and thus has a bright future for culture worldwide (Ke, 1986). According to previous reports (Zou et al., 1987; Shi et al., 1988; Yang et al., 1989; Liu et al., 1992; Zhou et al., 1997; Li et al., 2010), the optimum protein requirement of Wuchang bream ranges between 21.05 and 41.4% and the carbohydrate requirement was reported to be between 25% and 30%. However, little research has been done on the health implications of high dietary carbohydrate on Wuchang bream.

The carbohydrate utilization of fish varies between fish species and carbohydrate sources (Wilson, 1994; Krogdahl et al., 2005). Fish are known to have a limited ability for digestion and metabolism of carbohydrate and hence, excessive intake of this nutrient may result in nutritional problems (Jauncey, 1982; Roberts and Bullock, 1989; Lall, 1991). Excess carbohydrates reduce the growth rate and are often accompanied by poor feed utilization (Hemre et al., 2002). In general, herbivorous fish are more capable of

* Corresponding Author: X. P. Ge. Tel: +86-510-85557892, Fax: +86-510-85553304, E-mail: gexp@ffrc.cn

² Key Laboratory of Freshwater Fisheries and Germplasm Resources Utilization, Ministry of Agriculture, Freshwater Fisheries Research Center, Chinese Academy of Fishery Sciences, No. 9, Shanshui East Road, Wuxi City, Jiangsu Province 214081, China.

Submitted Nov. 26, 2012; Accepted Feb. 27, 2013; Revised May 30, 2013

utilizing dietary carbohydrate than carnivorous and omnivorous fish (Hemre et al., 2002). Fish with excess glucose are assumed to be under constant metabolic stress (Pieper and Pfeffer, 1980; Fletcher, 1981), which may lead to suppressed immune functions (Erfanullah, 1995; Fu and Xie, 2005) and cause a change in heat shock protein 70 (HSP70) content in gilthead sea bream *Sparus aurata* (Enes et al., 2006; Miao et al., 2011). Thus, high dietary carbohydrate consumption may increase the incidence of diseases and affect the antioxidation ability of the fish.

The structural modifications of nuclei observed within hepatocytes could reflect a nutritional pathology (Caballero et al., 1999). Histological changes in tissues of fish fed diets containing different carbohydrate levels have also been reported for some fish species. For instance, hepatocytes with large lipid vacuoles and nuclei located at the periphery of the cell were observed in livers of *Labeo rohita* juveniles (Kumar et al., 2005) fed Non-gelatinised carbohydrate and *L. rohita* fry (Mohapatra et al., 2003) fed higher gelatinized carbohydrate. Although the histopathological interpretation of these ultrastructural changes is difficult, it can provide useful information on better understanding the metabolism of carbohydrate.

Therefore, the objectives of the present study were to evaluate the effect of high dietary carbohydrate on growth performance, plasma biochemical indices, hepatic antioxidation enzyme activities and expression of hepatic HSP70 to gain a better understanding of the health implications of high dietary carbohydrate in Wuchang bream.

MATERIALS AND METHODS

Experimental diets

Two isonitrogenous (28.56% crude protein) and isolipidic (5.28% crude lipid) semi-purified diets were formulated to contain either 30.42% or 52.92% carbohydrate (Table 1). Fish meal was used as the only protein source, and α -starch (Wuxi Jinling Tower Starch Co. Ltd., China) as the only carbohydrate source. Dietary ingredients were ground through a 60-mesh screen. Vitamins and minerals were mixed by the progressive enlargement method (Zhou et al., 2007). Lipid and distilled water (60%, w/w) were added to the premixed dry ingredients and thoroughly mixed until homogenous in a feed mixer. The 2-mm diameter pellets were wet-extruded, air-dried, and sealed in plastic bags and stored frozen at -20°C until being used.

Animal rearing and feeding trial

Juvenile Wuchang bream (*Megalobrama amblycephala*) were obtained from the Freshwater Fisheries Research Center, Chinese Academy of Fishery Sciences, China. The fish were placed in six 300 L cylindrical fiberglass tanks

Table 1. Formulation and nutrient compositions of experimental diets

Ingredients	Compositions	
	30.42% carbohydrate	52.92% carbohydrate
Fish meal ¹	42	42
α -starch ²	30	52.5
Microcrystalline cellulose	22.5	0
Fish oil	1.5	1.5
Premix ³	1	1
Carboxyl-methyl cellulose	2	2
Calcium dihydrogen phosphate	1	1
Total	100	100
Proximate composition		
Dry matter (%)	92.32	90.52
Crude protein (%)	28.56	28.56
Ether extract (%) (EE)	5.28	5.28
Digestible carbohydrate (%)	30.42	52.92
Ash	8.90	9.31
Gross energy (kJ/g) ⁴	14.06	17.92

¹ Fish meal: TECNOLÓGICA DE ALIMENTOS S.A., Perú

² α -Starch: purchased from Jin Lingta Co., Ltd. China

³ Premix supplied the following minerals (g/kg of diet) and vitamins (IU or mg/kg of diet): CuSO₄·5H₂O, 2.0 g; FeSO₄·7H₂O, 25 g; ZnSO₄·7H₂O, 22 g; MnSO₄·4H₂O, 7 g; Na₂SeO₃, 0.04 g; KI, 0.026 g; CoCl₂·6H₂O, 0.1 g; Vitamin A, 900,000 IU; Vitamin D, 200,000 IU; Vitamin E, 4,500 mg; Vitamin K₃, 220 mg; Vitamin B₁, 320 mg; Vitamin B₂, 1,090 mg; Vitamin B₅, 2,000 mg; Vitamin B₆, 500 mg; Vitamin B₁₂, 1.6 mg; Vitamin C, 5,000 mg; Pantothenate, 1,000 mg; Folic acid, 165 mg; Choline, 60,000 mg.

⁴ Gross energy (kJ/g) was calculated using energy equivalents 23.64 kJ/g, 39.54 kJ/g, and 17.15 kJ/g for protein, lipid and digestible carbohydrate, respectively.

and acclimated for 15 d. After the acclimation, fish of similar sizes (average weight, 34.73±0.67 g) were randomly distributed into six 300 L cylindrical fiberglass tanks at a rate of 28 fish per tank. Fish in each tank were randomly assigned one of two experimental diets. Each diet was tested in triplicate. Fish were hand-fed to apparent satiation three times daily (06:30, 11:30 and 16:30 h) for 90 d.

Fish were provided with a continuous flow of sand-filtered freshwater (2 L/min) with continuous aeration. Water quality parameters were monitored daily. During the feeding trial, water temperature was 26.0±1.5°C. The water oxygen content was not less than 6.0 mg/L during the experiment. A 12 L:12 D photoperiod was used. Tanks were thoroughly cleaned biweekly.

Sample collection

At the start of the experiment, the fish were weighed after 24-h starvation and nine fish from each group were sampled. The fish were anesthetized in diluted MS-222 (tricaine methanesulfonate, Sigma, USA) at the concentration of 200 mg/L before being sampled. Nine fish from each experimental group in the middle of the

experiment were sampled again. After 24-h starvation at the end of the feeding period, fish from each tank were weighed and the specific growth rate (SGR) was calculated. Blood was collected from the caudal vein, immediately centrifuged and the plasma frozen for analysis. The livers were frozen in liquid nitrogen and stored at -80°C until assay.

Proximate analysis of Wuchang bream

Diets and fish were analyzed for proximate composition. Dry matter was determined by oven drying until constant weight (105°C). Crude protein (nitrogen $\times 6.25$) was determined by the Kjeldahl method using an Auto Kjeldahl System (FOSS KT260, Switzerland). Crude lipid was determined by ether-extraction using Soxtec System HT (Soxtec System HT6, Tecator, Sweden) and ash was determined by combustion at 550°C for 4 h. The hepatic glycogen content was determined as described in Plummer (1987).

Plasma biochemical parameters and hormones

Plasma triglyceride (TGL), glucose (GLU) and cholesterol (CHOL) were measured by enzymatic (glycerol phosphate oxidase) and colorimetric (PAP) methods, glucose oxidase method, and enzymatic (cholesterol oxidase) and colorimetric methods, respectively, using kits purchased from Junshi Biotechnology Co., Ltd., Shanghai, China. Plasma insulin was measured by radioimmunoassay (RIA) using a test kit (Beifang Biotech Research Institute, Beijing, China) and following the method described by Clark and Hales (Clark and Hales, 1994; Li et al., 2012). Plasma cortisol was measured by RIA using a test kit (Beifang Biotech Research Institute, Beijing, China) and following the method described by Pickering and Pottinger (Pickering and Pottinger, 1983; Liu et al., 2012). Alkaline phosphatase (AKP) activity was measured according to the procedure described by Bessey et al. (1946) and Dabrowski (1990) using kits from Junshi Biotechnology Co., Ltd., Shanghai, China.

Liver superoxide dismutase (SOD) activities, malondialdehyde (MDA) and total antioxidative capacity (T-AOC) activities

Liver samples were homogenized in ice-cold phosphate buffer (1:10 dilution) (phosphate buffer: 0.064 mol/L, pH 6.4) (Liu et al., 2012). The homogenate was then centrifuged for 20 min (4°C , 3,000 \times g). An aliquot of the supernatant was used to determine the hepatic SOD, MDA and T-AOC. Hepatic SOD activity and MDA content were measured by the xanthine oxides method (Marklund and Marklund, 1974) and barbituric acid reaction chronometry (Xiang and Wang, 1990), respectively, using kits from Jiancheng Bioengineering Institute, Nanjing, China. Hepatic T-AOC was also evaluated using commercial kits

(Jiancheng Bioengineering Institute, Nanjing, China) according to the manufacturer's instructions.

Histology

The fish liver slices were immediately fixed in neutral buffered formalin, embedded in paraffin wax, cut at 5 μm , and stained with haematoxylin and eosin (H & E) as described by Roberts (1989).

Electron microscopy

At the end of the experiment, livers from 3 fish per group were removed for histological examination. Livers were diced into small pieces at approximately 1 mm^3 , and prefixed in 2.5% glutaraldehyde solution, then fixed in glutaraldehyde overnight at 4°C . After washing in 0.2 M phosphate buffer (pH 7.2) for three 15 min, the samples were post-fixed in cold 1% aqueous osmium tetroxide for 1 h. After rinsing with phosphate buffer again, the specimens were dehydrated in a graded ethanol series of 30-100% and further embedded in Epon 812. The semi-thin sections were stained with 1% toluidine blue in 1% borax solution and viewed under a light microscope for initial evaluation. Blocks with specific areas were then chosen and sectioned with glass knives on a KBV ultramicrotome. Eventually, the fifty-nanometer sections of liver were stained with uranyl acetate and lead citrate and observed with H-7650 Transmission Electron Microscope (Hitachi High-Technologies Co., Japan). Ten areas per liver were selected from fish fed the different dietary carbohydrate levels.

Real-time PCR measurement of hepatic HSP70

We used *M. amblycephala* cDNA sequences in GenBank to design the primers for HSP70 (accession No EU884290.2) and β -actin (accession No AY170122.2) (Ming et al., 2010). The primers were: (1) 5'-CTTTATCAGGGAGGGATGCCAGC-3' and 5'-CCCTG CAGCATTGAGTTCATAAGGT-3' for HSP70 cDNA and; (2) 5'-TCGTCCACCGCAAATGCTTCTA-3' and 5'-CCGTCACCTTCACCGTTCAGT-3' for β -actin cDNA. All primers were synthesized by Shanghai Generay Biotech co., LTD. China. The PCR products were 100 to 150 bp long.

We extracted total RNA from the liver tissue using RNAiso Plus (Dalian Takara Co. Ltd., China). RNA samples were treated with RQ1 RNase-Free DNase (Dalian Takara Co. Limited, China) to avoid genomic DNA amplification. We generated cDNA from 500 ng DNase-treated RNA using ExScript RT-PCR Kit (Dalian Takara Co. Ltd., China). The reverse transcription PCR reaction solution consisted of 500 ng RNA, 2 μL 5 \times Buffer, 0.5 μL dNTP Mixture (10 mM each), 0.25 μL RNase Inhibitor (40 U/ μL), 0.5 μL dT-AP Primer (50 mM), 0.25 mL ExScript RTase (200 U/ μL), and DEPC H_2O , up to a final volume of

10 μ L. The reaction conditions were as follows: 37°C for 15 min, 85°C for 5 s, and 4°C thereafter.

We used real-time PCR to determine mRNA levels with an SYBR Green I fluorescence kit (Ming et al., 2010). Real-time PCR was performed in a Mini Opticon Real-Time Detector (Bio-Rad, USA). The fluorescent quantitative PCR reaction solution consisted of 12.5 μ L SYBR premix Ex Taq (2 \times), 0.5 μ L PCR Forward Primer (10 μ M), 0.5 μ L PCR Reverse Primer (10 μ M), 2.0 μ L RT reaction mix (cDNA solution), 9.5 μ L dH₂O. The reaction conditions were as follows: 95°C for 2 min, followed by 44 cycles consisting of 95°C for 10 s, 59°C for 20 s, and 72°C for 20 s. The fluorescent flux was then recorded and the reaction continued at 72°C for 3 min. We measured the dissolution rate between 65 and 92°C. Each increase of 0.2°C was maintained for 1 s and the fluorescent flux was recorded. We calculated the relative quantification of the target gene transcript (HSP70) with a chosen reference gene transcript (β -actin) using the $2^{-\Delta\Delta C_T}$ method (Livak and Schmittgen, 2001). This mathematical algorithm, which does not require a calibration curve, computes an expression ratio based on real-time PCR efficiency and the crossing point deviation of the sample versus a control. We measured the PCR efficiency by constructing a standard curve using a serial dilution of cDNA; $\Delta\Delta C_T = (C_{T, \text{Target}} - C_{T, \beta\text{-actin}}) \text{ time } x - (C_{T, \text{Target}} - C_{T, \beta\text{-actin}}) \text{ time } 0$.

Hypoxia challenge experiment

At the end of the experiment, fifteen fish from each

group (5 fish taken from each tank) underwent hypoxia challenge test. The fish were separately placed into six tanks (60 cm \times 47 cm \times 40 cm) without aeration. Cumulative mortality was recorded at d 1, d 2, d 3, and d 4. During the challenge test of hypoxia, water temperature was 26.0 \pm 1.5°C, pH 6.9 \pm 0.1, dissolved oxygen ranged from 0.64 to 0.74 mg/L. The asphyxiant point of Wuchang bream is about 0.5 mg/L (Ou et al., 2001). Oxygen content of water samples was determined using the Winkler method (Strickland and Parsons, 1968).

Statistical analysis

We used SPSS (version 16.0) software Duncan's multiple range tests and Independent-Samples *t*-tests to determine the differences. Diverse lower case letters above histogram bars show significant differences ($p < 0.05$) in different carbohydrate groups at each sampling point in Duncan's multiple range tests. Significant differences ($p < 0.05$) between values obtained from normal and high carbohydrate groups are marked by asterisks above histogram bars in Independent-Samples *t*-tests. All the results were expressed as means \pm standard error ($\bar{X} \pm SE$).

RESULTS

Growth performance and feed utilization of Wuchang bream fed different levels of carbohydrate diet are shown in Table 2. The survival in all treatments was 100%. There was no difference in weight gain between fish fed with the

Table 2. Initial weight, Final weight, weight gain, specific growth rate (SGR), feed conversion rate (FCR), protein efficiency rate (PER), feeding rate (FR) and proximate composition of whole body of Wuchang bream (*Megalobrama amblycephala*) fed diets containing two levels of carbohydrate for 90 d¹

Carbohydrate level in diet (%)	30.42% carbohydrate	52.92% carbohydrate
Initial body weight (g)	34.77 \pm 0.03	34.68 \pm 0.02
Final body weight (g)	82.47 \pm 1.55	76.71 \pm 2.05
Weight gain (%) ²	137.15 \pm 4.55	121.21 \pm 5.79
SGR (%) ³	1.23 \pm 0.03	1.13 \pm 0.04*
FCR ⁴	1.47 \pm 0.02	1.64 \pm 0.03*
PER ⁵	2.42 \pm 0.23	2.30 \pm 0.26
FR (%) ⁶	1.54 \pm 0.06	1.49 \pm 0.04
Proximate composition of whole body		
Dry matter (DM, %)	24.17 \pm 0.20	24.96 \pm 0.45
Crude protein (% DM)	82.22 \pm 0.60	80.97 \pm 0.79
Crude lipid (% DM)	7.83 \pm 0.52	9.13 \pm 0.68
Ash (% DM)	8.95 \pm 0.63	9.10 \pm 0.70

¹ Values of weight gain and specific growth rate (SGR) are means \pm SE (n = 3); Values of dry matter, crude protein, crude lipid and ash are means \pm SE (n = 9); All data were analyzed by Independent-Samples *t*-tests to test for the effects of the dietary treatments. Asterisks show significant difference between normal and high carbohydrate groups. All the results were expressed as means \pm standard error ($\bar{X} \pm SE$).

² Weight gain (%) = (Final body weight - initial body weight) \times 100 / initial body weight.

³ Specific growth rate (SGR, %) = (LnW_i - LnW₀) \times 100 / T, where W₀ and W_i are the initial and final body weights, and T is the culture period in days.

⁴ Feed conversion ratio (FCR) = total diet fed (kg) / total wet weight gain (kg).

⁵ Protein efficiency ratio (PER) = final wet weight gain / protein intake.

⁶ Feeding rate (FR, %) = 100 \times dry feed intake / [(initial wet body mass + final wet body mass) / 2 \times T].

two diets. Protein efficiency ratio (PER) and feeding rate (FR) of Wuchang bream fed 52.92% carbohydrate diet were not statistically significant from those fed with control diet. The fish fed with high carbohydrate diet (52.92%) had significantly lower SGR and higher feed conversion ratio than those of fish fed the control diet ($p < 0.05$). Proximate compositions of whole body for Wuchang bream were also shown in Table 2. There was no difference in dry matter between two dietary treatment groups. Protein, lipid and ash contents in whole body were not significantly affected by the different dietary carbohydrate levels.

Plasma TGL of Wuchang bream fed the control diet for 45 d was significantly lower than that on d 0 ($p < 0.05$). TGL of fish fed 52.92% carbohydrate diet for 90 d was significantly higher than that for 45 d ($p < 0.05$) and also significantly higher than that of fish fed the control diet for

90 d ($p < 0.05$) (Figure 1a). Glucose concentration of fish fed 52.92% carbohydrate diet for 90d was significantly higher than that on d 0 ($p < 0.05$) (Figure 1b). Plasma CHOL of fish fed the control diet for 90 d was significantly higher than those for 0 d and 45 d ($p < 0.05$). There was no difference in CHOL of Wuchang bream between two groups (Figure 1c). Plasma insulin of fish fed the control diet for 45 d was significantly higher than those for 0 d and 90 d, respectively ($p < 0.05$) (Figure 1 d). Plasma cortisol of Wuchang bream fed the control diet for 45 d and 90 d were significantly lower than that for d 0, respectively ($p < 0.05$). Plasma cortisol of Wuchang bream fed high carbohydrate diet for 45 d was significantly lower than that for d 0 ($p < 0.05$). Plasma cortisol of Wuchang bream fed high carbohydrate diet for 90 d was significantly higher than that of fish fed the control diet for 90 d ($p < 0.05$) (Figure 1e). AKP of fish

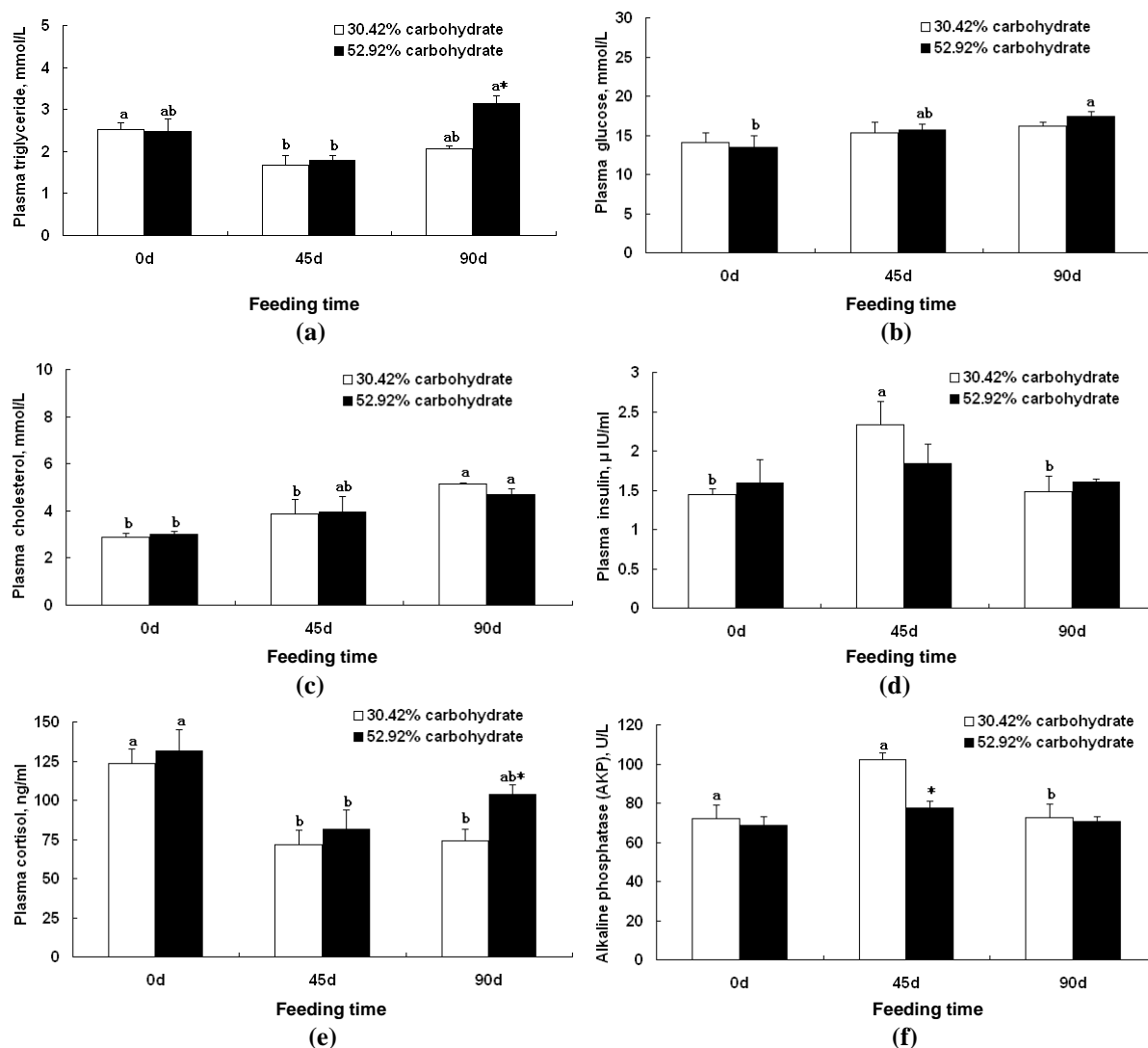


Figure 1. Effects of high or normal carbohydrate diet on plasma triglyceride (a), glucose (b), cholesterol (c), insulin (d), cortisol (e) and alkaline phosphatase (AKP) (f) levels of Wuchang bream (*Megalobrama amblycephala*). Data are expressed as means \pm SE (n = 9). Significant differences ($p < 0.05$) between values obtained in 30.42% carbohydrate group and 52.92% carbohydrate group was marked by asterisk by t-tests. Different letters indicate significant differences ($p < 0.05$) in different sampling points by Duncan's multiple range tests.

fed the control diet for 90 d was significantly lower than that for 45 d, 0 d, respectively. AKP of Wuchang bream fed high carbohydrate diet was not found significantly different among the 0 d, 45 d, and 90 d samples. AKP of Wuchang bream fed high carbohydrate diet for 45 d was remarkably lower than that of fish fed the control diet for 45 d ($p < 0.05$) (Figure 1f).

The hepatic SOD activity of Wuchang bream fed the control diet for 45 d and 90 d were significantly lower than that on d 0, respectively ($p < 0.05$). Hepatic SOD activity of Wuchang bream fed high carbohydrate diet for 45 d and 90 d were also significantly lower than that for d0, respectively ($p < 0.05$). Hepatic SOD activity of Wuchang bream fed 52.92% carbohydrate diet for 90 d was significantly lower compared to that of fish fed the control diet for 90 d ($p < 0.05$) (Figure 2a). Hepatic MDA levels of Wuchang bream fed 52.92% carbohydrate diet for 45 d and 90 d were significantly higher than that on d 0, respectively ($p < 0.05$). Hepatic MDA level of Wuchang bream fed 52.92% carbohydrate diet for 45 d was significantly higher compared to that of fish fed the control diet for 45 d ($p < 0.05$) (Figure 2b). The hepatic T-AOC of Wuchang bream fed 52.92% carbohydrate diet for 90 d was significantly lower than that of fish fed the control diet for 90 d ($p < 0.05$) (Figure 2c). The hepatic glycogen content of Wuchang bream fed 52.92% carbohydrate diet for 45 d and 90 d were significantly higher than that for d 0, respectively ($p < 0.05$). Hepatic glycogen content of Wuchang bream fed

high carbohydrate diet for 45 d was significantly higher compared to that of fish fed the control diet for 45 d ($p < 0.05$) (Figure 2d). Hepatic glycogen content of Wuchang bream fed 52.92% carbohydrate diet for 90 d was also significantly higher compared to that of fish fed the control diet for 90 d ($p < 0.05$) (Figure 2d).

Liver from fish fed normal carbohydrate diet showed regular-shaped hepatocytes with large centrally located nuclei and some lipidic vacuoles in the cytoplasm which did not disturb the hepatocytes size (Figure 3a). In contrast, fish fed high carbohydrate diet showed foci of non-stained swelling hepatocytes, with numerous varying-size lipid vacuoles. This morphology was more evident for those Wuchang bream fed diets supplemented with the highest dietary inclusion of carbohydrate (Figure 3b).

Hepatocytes of fish fed the control diet showed a great number of small lipid droplets and large nuclei (Figure 4a). On the contrary, fish fed 52.92% carbohydrate diet showed large lipid droplets in a small number that coalesced among them, causing displacement of cellular organelles to the periphery of hepatocytes (Figure 4b).

The relative level of hepatic HSP70 mRNA of Wuchang bream fed 52.92% carbohydrate diet for 90 d was significantly higher than that of fish fed the control diet for 90 d ($p < 0.05$) (Figure 5).

There were no significant differences among the cumulative mortality in two groups at 1 d after the hypoxia challenge experiment. But after 2-d hypoxia challenge, the

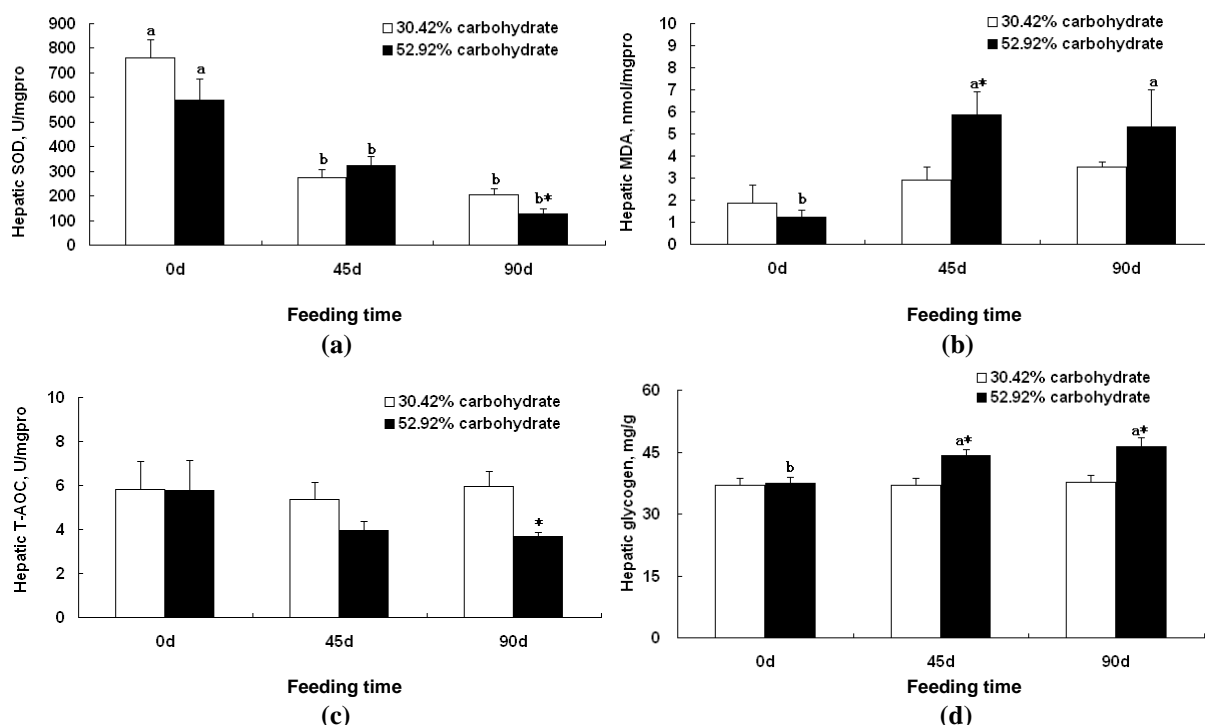


Figure 2. Effects of high or normal carbohydrate diet on hepatic SOD (a), MDA (b), T-AOC (c) and glycogen (d) levels of Wuchang bream (*Megalobrama amblycephala*). Legends are the same as in Figure 1.

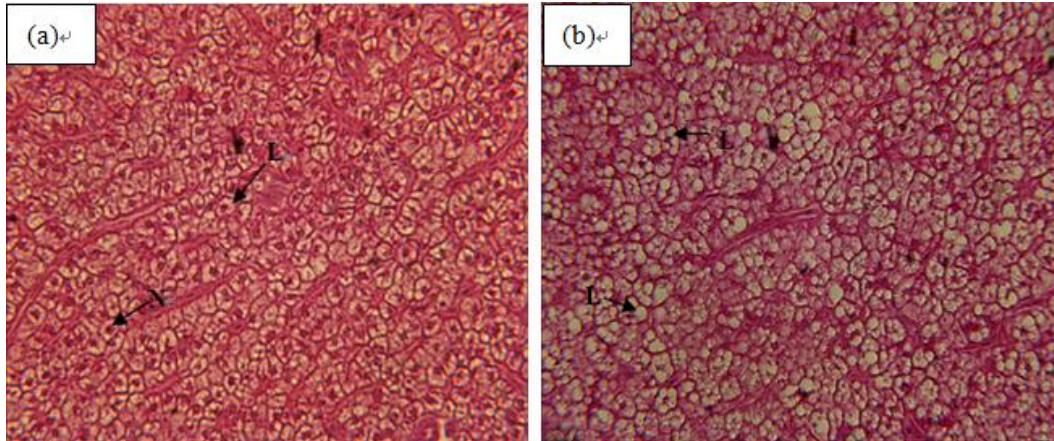


Figure 3. Hepatocytes from Wuchang bream (*Megalobrama amblycephala*) fed experimental diets. (a) Diet: 30.42% dietary carbohydrate content. Large and spherical nucleus centrally located (H&E, $\times 400$). (b) Diet: 52.92% dietary carbohydrate content. Note swelling hepatocytes with enlarged irregular nucleus located at the periphery of the cell (H&E, $\times 400$). N = Nucleus, L = Lipid droplets.

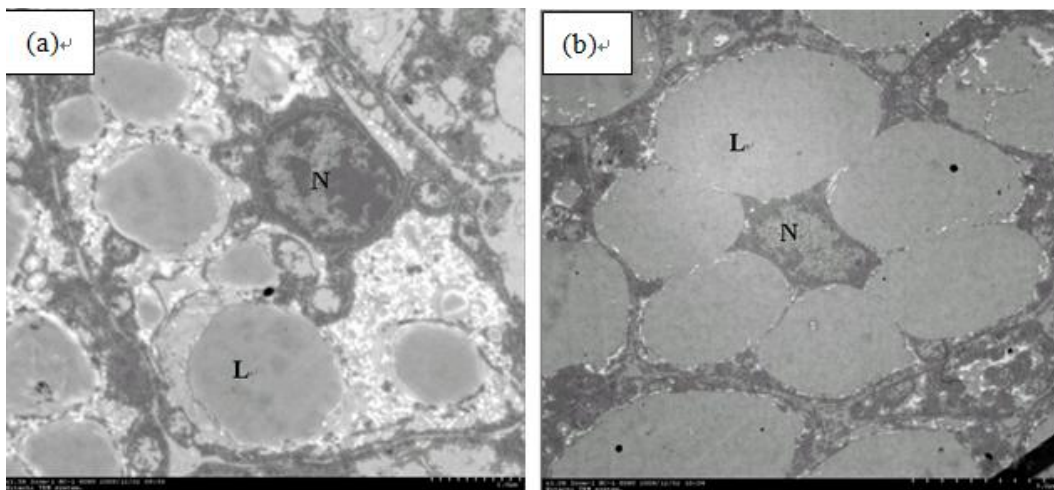


Figure 4. Electron micrographs of Wuchang bream (*Megalobrama amblycephala*) hepatocytes fed with (a) 30.42% carbohydrate or (b) 52.92% carbohydrate. Note more large lipid droplets in hepatocytes from Wuchang bream (*Megalobrama amblycephala*) fed with high carbohydrate diet (b). N = Nucleus, L = Lipid droplets.

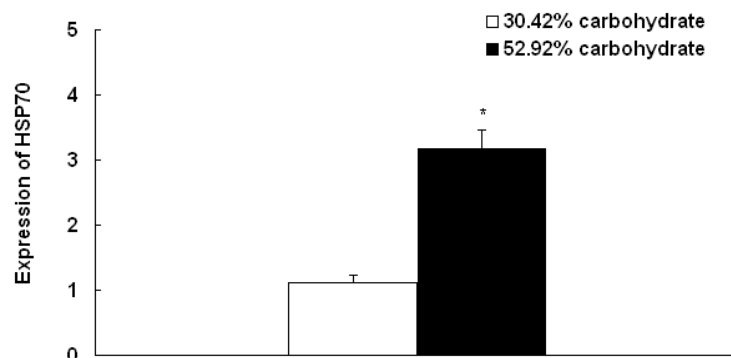


Figure 5. Effects of dietary carbohydrate levels on the relative level of hepatic Heat Shock Protein 70 (HSP70) mRNA of Wuchang bream (*Megalobrama amblycephala*). Data are expressed as means \pm SE (n = 9). Significant differences ($p < 0.05$) between values obtained in 30.42% carbohydrate group and 52.92% carbohydrate group was marked by asterisk by t-tests.

cumulative mortality of the fish in the high carbohydrate group was about 80% while the cumulative mortality in normal groups were about 6.7% ($p < 0.05$). Similarly, after 3-d hypoxia experiment, the cumulative mortality of the fish in the high carbohydrate group was about 100% while the cumulative mortality in normal group was about 86.67%. These indicated that the hypoxia resistance of fish fed the control diet was higher than that of fish fed high carbohydrate diet (Figure 6).

DISCUSSION

Previous studies suggested that high dietary carbohydrate levels reduce growth rate and feed utilization (Hemre et al., 2002). In the present study, fish fed high carbohydrate diet had a lower specific growth rate and a higher feed conversion ratio. Similar results were reported previously in herbivorous fish such as grass carp (*Ctenopharyngodon idellus*) (Gao et al., 2010), omnivorous fish such as gibelio crucian carp (*Carassius auratus gibelio*) (Tan et al., 2009), as well as in carnivorous fish such as top mouth culter (*Erythroculter ilishaeformis* Bleeker) (Ge et al., 2007; Liu et al., 2008), southern catfish (*Silurus meridionalis*) (Luo and Xie, 2010). However, a few studies reported that excessive carbohydrate does not affect growth of rainbow trout (*Oncorhynchus mykiss*) (Bergot, 1979; Brauge et al., 1994) and Indian major carp (*Cirrhinus mrigala*) fry (Singh et al., 2006).

In this study, compared with the control group, fish fed high carbohydrate diet for 90 d had significantly higher plasma TGL. Similar findings were obtained in top mouth culter (*Erythroculter ilishaeformis* Bleeker) (Ge et al., 2007; Liu et al., 2008), European whitefish (*Coregonus lavaretus*) (Vielma et al., 2003), Atlantic salmon (*Salmo salar* L.) (Hemre et al., 1995). However, some other studies reported no significant difference by dietary carbohydrate in gilthead sea bream (*Sparus aurata*) (Enes et al., 2008), largemouth

bass (*Micropterus salmoides*) (Amoah et al., 2008), Atlantic salmon (*Salmo salar* L.) (Arnesen et al., 1995), and grass carp (*Ctenopharyngodon idellus*) (Gao et al., 2010).

In addition to changes in growth and intermediate metabolism, excess dietary carbohydrates influence the stress responses of fish (Fletcher, 1997). Stress results in the adrenergic and hypothalamus - pituitary - interrenal (HPI) axis responses, with the HPI response culminating in an increase in plasma cortisol. Therefore the level of cortisol is commonly used as an indicator to assess the stress responses of fish (Barton and Iwama, 1991; Iwama et al., 1997; Wendelaar Bonga, 1997). An increase in dietary carbohydrate from 5% to 30% slightly increased the cortisol levels in Atlantic salmon (Waagbø et al., 1994), but had no apparent effect on rainbow trout (Hilton et al., 1987) or cod (Hemre et al., 1991). In this study, we found that plasma concentrations of cortisol of Wuchang bream fed high dietary carbohydrate was significantly higher than that of fish fed the control diet at the end of the experiment, suggesting that high dietary carbohydrate affected the stress response of Wuchang bream.

The stress response might also increase free radical contents, leading to increased lipid peroxidation and lipid peroxidation injury (Zhou and Liang, 2003; Chen et al., 2006; He et al., 2007). In Atlantic salmon, dietary intake of high carbohydrate can impact on the immunity and fish mortality after *Aeromonas Salmonicida* infection (Waagbø et al., 1994). The hepatic lipid peroxide will decompose further to produce a large amount of aldehydes, alcohols and hydrocarbon of which MDA is a component with strong toxicity. SOD plays a significant role in resisting oxide damage (Gu et al., 1995). In this study, compared with control group, fish fed a high carbohydrate diet had significantly lower hepatic SOD activity for 90 d, higher hepatic MDA activities for 45d, and higher hepatic T-AOC for 90 d. These results suggest that excessive carbohydrate lowered the hepatic antioxidant abilities of Wuchang bream.

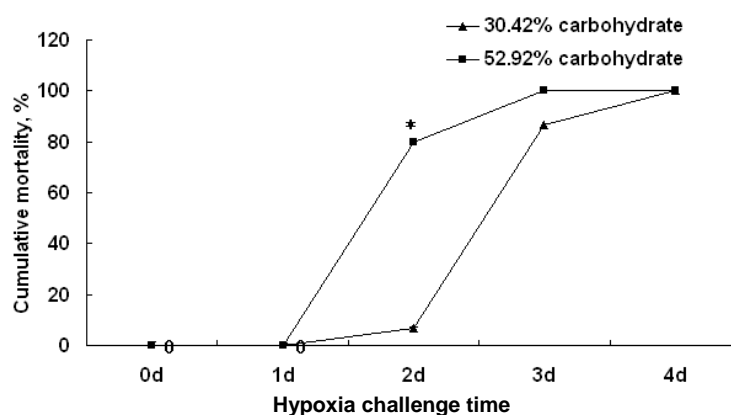


Figure 6. Cumulative mortality after hypoxia challenge in Wuchang bream (*Megalobrama amblycephala*) fed with the high carbohydrate diet (52.92% carbohydrate) or normal carbohydrate diet (30.42% carbohydrate) for 90 d. Significant differences ($p < 0.05$) between the control and high dietary carbohydrate group at each sampling point after hypoxia challenge are marked by asterisks in *t*-tests.

The fate of excess hepatic carbohydrate is either towards glycogen synthesis or towards lipogenesis (Enes et al., 2006a). In this study, we observed that hepatic glycogen content of Wuchang bream fed a high carbohydrate diet was significantly higher compared to that of fish fed the control diet, similar to a previous study (Yengkokpam, 2003). In the present study, high carbohydrate diet affected hepatocyte morphology. We observed the hepatocytes of fish fed a high carbohydrate diet showed large lipid droplets that coalesced among them, causing displacement of cellular organelles to the periphery of hepatocytes. This observation agrees with reports of hepatocyte hypertrophy due to increased level of carbohydrate in the feed of *L. rohita* juveniles (Kumar et al., 2005) and *L. rohita* fry (Mohapatra et al., 2003).

Heat shock proteins (HSPs) are one of the most conserved and important protein families, present in all organisms including fish (Basu et al., 2002). HSP70 is mainly involved in stress protection, improving cell survival and raising tolerance to environmental stressors or harm (Basu et al., 2002). Thus, HSP70 has been most widely chosen as a bioindicator of stress. In this study, the relative level of hepatic HSP70 mRNA of Wuchang bream fed high carbohydrate diet for 90 d was significantly higher than that of fish fed the control diet for 90 d. The finding of our study indicated that high dietary carbohydrate may lead to metabolic stress in *M. amblycephala*, similar to a previous study (Enes et al., 2006b).

The objective of hypoxia challenge was to determine the effects of hypoxia on the mortality of the fish fed high dietary carbohydrate. Inadequate dissolved oxygen in the aquatic environment is a well-established cause of fish mortality (Choi et al., 2007). Similar experiments were carried out on estuarine fish (*Leiostomus xanthurus*) (Cooper et al., 2002) and tilapia (*Oreochromis* spp.) (Bunch and Bejerano, 1997; Evans et al., 2003). Fish fed with high carbohydrate diet are assumed to be under constant metabolic stress (Pieper and Pfeffer, 1980; Fletcher, 1981), which may lead to suppressed immune functions (Ellis, 1981; Maule et al., 1989; Wiik et al., 1989; Vielma et al., 2003; Kumar et al., 2005). In this study, after hypoxia challenge, the mortality was higher in the high dietary carbohydrate group compared to the control group, at d 2 or d 3 of challenge. It was considered that the disease resistance of the fish fed high dietary carbohydrate was lower than those of the fish fed control diet. Excessive dietary carbohydrate might have lowered the resistance to hypoxia.

CONCLUSIONS

In summary, based on results from growth performances, blood biochemical parameters, hepatic antioxidation enzyme activities, the change of hepatic morphology, the relative level of hepatic HSP70 mRNA, and the hypoxia

challenge, high dietary carbohydrate reduced the growth rate and feed utilization, decreased fish resistance to hypoxia challenge, therefore health status. These findings provide a better understanding of the health implications of high dietary carbohydrate for Wuchang bream.

ACKNOWLEDGEMENTS

We thank Dr. Ya-Xiong Tao at Auburn University in United States for advice and editing during preparation of the manuscript. This work was supported by Modern Agro-industry Technology Research System, China (CARS-46), Special Fund for Agro-scientific Research in the Public Interest of China (201003020), Open Fund of Key Laboratory of Freshwater Fisheries and Germplasm Resources Utilization of the Ministry of Agriculture (KF201311), Freshwater Fisheries Research Center, Chinese Academy of Fishery Sciences, China Central Governmental Research Institutional Basic Special Research Project from Public Welfare Fund (2009JBFB16).

REFERENCES

- Amoah, A., S. D. Coyle, C. D. Webster, R. B. M Durborrow, L. A. Bright, and J. H. Tidwell. 2008. Effects of graded levels of carbohydrate on growth and survival of largemouth bass, *Micropterus salmoides*. *J. World Aquac. Soc.* 39:397-405.
- Arnesen, P., A. Krogdahl, and A. Sundby. 1995. Nutrient digestibilities, weight gain and plasma and liver levels of carbohydrate in Atlantic salmon (*Salmo salar*, L.) fed diets containing oats and maize. *Aquac. Nutr.* 1:151-158.
- Barton, B. A. and G. K. Iwama. 1991. Physiological changes in fish from stress in aquaculture with emphasis on the response and effects of corticosteroids. *Ann. Rev. Fish Dis.* 1:3-26.
- Basu, N., A. E. Todgham, P. A. Ackerman, M. R. Bibeau, K. Nakano, P. M. Schulte, and G. K. Iwama. 2002. Heat shock protein genes and their functional significance in fish. *Gene* 295:173-183.
- Bergot, F. 1979. Carbohydrate in rainbow trout diets: effects of the level and source of carbohydrate and the number of meals on growth and body composition. *Aquaculture* 18:157-167.
- Bessey, O. A., O. H. Lowry, and M. J. Brock. 1946. A method for the rapid determination of alkaline phosphatase with five cubic millimeters of serum. *J. Biol. Chem.* 164:321-329.
- Brauge, C., F. Medale, and G. Corraze. 1994. Effect of dietary carbohydrate levels on growth, body composition and glycemia in rainbow trout, *Oncorhynchus mykiss*, reared in seawater. *Aquaculture* 123:109-120.
- Bunch, E. C. and I. Bejerano. 1997. The effect of environmental factors on the susceptibility of hybrid tilapia *Oreochromis niloticus* × *Oreochromis aures* to streptococcosis. *Israel J. Aquac.* 49:67-76.
- Caballero, M. J., G. Lopez-Calero, J. Socorro, F. J. Roo, M. S. Izquierdo, and A. J. Fernández. 1999. Combined effect of lipid level and fish meal quality on liver histology of gilthead seabream (*Sparus aurata*). *Aquaculture* 179:277-290.
- Chen, W. W., L. R. Cui, and C. F. Yang. 2006. The study on

- Huangqi's protective role of lipid peroxidation injury during renal ischemia reperfusion in rats. *Journal of Qiqihar Medical College* 27:1666-1667.
- Choi, I., D. W. Lehmann, C. A. Harms, and J. M. Law. 2007. Acute hypoxia-reperfusion triggers immunocompromise in Nile Tilapia. *J. Aquat. Anim. Health*. 19:128-140.
- Clark, P. and C. Hales. 1994. How to measure plasma insulin. *Diabetes/Metabolism Rev.* 10:79.
- Cooper, R. U., L. M. Clough, M. A. Farwell, and T. L. West. 2002. Hypoxia-induced metabolic and antioxidant enzymatic activities in the estuarine fish *Leiostomus xanthurus*. *J. Exp. Mar. Biol. Ecol.* 279:1-20.
- Dabrowski, K. 1990. Assay of ascorbic phosphate and bioavailability of ascorbic mono- and poly-phosphates. *J. Sci. Food Agric.* 52:409-420.
- Enes, P., S. Panserat, S. Kaushik, and A. Oliva-Teles. 2008. Growth performance and metabolic utilization of diets with native and waxy maize starch by gilthead sea bream (*Sparus aurata*) juveniles. *Aquaculture* 274:101-108.
- Enes, P., S. Panserat, S. Kaushik, and A. Oliva-Teles. 2006a. Effect of normal and waxy maize starch on growth, food utilization and hepatic glucose metabolism in European sea bass (*Dicentrarchus labrax*) juveniles. *Comp. Biochem. Physiol. Part A. Mol. Integr. Physiol.* 143:89-96.
- Enes, P., S. Panserat, S. Kaushik, and A. Oliva-Teles. 2006b. Rapid metabolic adaptation in European sea bass (*Dicentrarchus labrax*) juveniles fed different carbohydrate sources after heat shock stress. *Comp. Biochem. Physiol. Part A. Mol. Integr. Physiol.* 145:73-81.
- Ellis, A. E. 1981. Stress and the modulation of defence mechanisms in fish. In: Pickering AD, editor. *Stress in fish*. London/New York: Academic Press, pp. 147-69.
- Erfanullah, A. K. J. 1995. Protein-sparing effect of dietary carbohydrate in diets for fingerling *Labeo rohita*. *Aquaculture* 136:331-339.
- Evans, J. J., C. A. Shoemaker, and P. H. Klesius. 2003. Effects of sublethal dissolved oxygen stress on blood glucose and susceptibility to *Streptococcus agalactiae* in Nile tilapia *Oreochromis niloticus*. *J. Aquat. Anim. Health* 15:202-208.
- Fletcher, T. C. 1981. Dietary effects on stress and health. In: Ed. G. K. Iwama, A. D. Pickering, J. P. Sumpter, C. B. Schreck, editors. London/New York: Academic Press, pp. 147-169.
- Fletcher, T. C. 1997. Dietary effects on stress and health. In: *Fish Stress and Health in Aquaculture* (Ed. G. K. Iwama, A. D. Pickering, J. P. Sumpter, C. B. Schreck). Cambridge Univ. Press, Cambridge, UK, pp. 223-246.
- Fu, S. J. and X. J. Xie. 2005. Effect of dietary carbohydrate levels on growth performance in *Silurus meridionalis* Chen. *Acta Hydrobiol Sin.* 29:393-398.
- Gao, W., Y. J. Liu, L. X. Tian, K. S. Mai, G. Y. Liang, H. J. Yang, M. Y. Huai, and W. J. Luo. 2010. Effect of dietary carbohydrate-to-lipid ratios on growth performance, body composition, nutrient utilization and hepatic enzymes activities of herbivorous grass carp (*Ctenopharyngodon idella*). *Aquac. Nutr.* 16:327-333.
- Ge, X. P., B. Liu, J. Xie, J. H. Yu, Y. K. Tang, and T. T. Wu. 2007. Effect of different carbohydrate levels of dietary on growth, plasma biochemical indices and hepatic pancreas carbohydrate metabolic enzymes in top mouth culter (*Erythroculter ilishaeformis* Bleeker). *J. Nanjing Agric. Univ.* 30:88-93.
- Gu, J., J. H. Gong, Y. B. Yin, and J. Li. 1995. Effects of intermittent hyperbaric oxygen exposure and oxygen convulsions on a trioxidant enzyme activity and lipid peroxide contents in rats. *Chinese J. Nautr. Med.* 2:31-34.
- He, S. X., J. L. Xu, G. Zhao, Y. L. Wang, H. Fu, H. X. Li, and X. M. Chang. 2007. Effects of *Salvia miltiorrhiza* bunge injection on the status of lipid peroxidation in liver cirrhosis patients with massive upper gastrointestinal hemorrhage. *World Chinese J. Digestol.* 15:181-184.
- Hemre, G. I., G. Lambertsen, and Ø. Lie. 1991. The effect of dietary carbohydrate on the stress response in cod (*Gadus morhua*). *Aquaculture* 95:319-328.
- Hemre, G. I., T. P. Mommsen, and Å. Krogdahl. 2002. Carbohydrates in fish nutrition: effects on growth, glucose metabolism and hepatic enzymes. *Aquac. Nutr.* 8:175-194.
- Hemre, G. I., K. Sandnes, Ø. Lie, and R. Waagbø. 1995. Blood chemistry and organ nutrient composition in Atlantic salmon, *Salmo salar* L., fed graded amounts of wheat starch. *Aquac. Nutr.* 1:37-42.
- Hilton, J. W., E. M. Plisetskaya, and J. F. Leatherland. 1987. Does oral 3,5,3'-triiodo-L-thyronine affect dietary glucose utilization and plasma insulin levels in rainbow trout (*Salmo gairdneri*)? *Fish Physiol. Biochem.* 4:113-120.
- Iwama, G. K., A. D. Pickering, J. P. Sumpter, and C. B. Schreck. 1997. *Fish Stress and Health in Aquaculture*. Society for Experimental Biology Seminar Series, vol. 62. Society for Experimental Biology, Great Britain, pp. 278.
- Jauncey, K. 1982. Carp (*Cyprinus carpio* L.) nutrition - a review. In: *Recent advances in aquaculture* (Ed. J. F. Muir, R. J. Roberts). Croom Helm Ltd, London, pp. 215-263.
- Ke, H. 1975. An excellent freshwater food fish, *Megalobrama amblycephala*, and its propagating and culturing. *Acta Hydrobiol Sin.* 5:293-312.
- Ke, H. 1986. Cultivation of blunt snout bream (*Megalobrama amblycephala*) in China. *Fisheries Science and Technology Information* 5: 1-5.
- Krogdahl, Å., G. I. Hemre, and T. P. Mommsen. 2005. Carbohydrates in fish nutrition: digestion and absorption in postlarval stages. *Aquac. Nutr.* 11:103-122.
- Kumar, S., N. P. Sahu, A. K. Pal, D. Choudhury, S. Yengkokpam, and S. C. Mukherjee. 2005. Effect of dietary carbohydrate on haematology, respiratory burst activity and histological changes in *L. rohita* juveniles. *Fish. Shellfish Immunol.* 19: 331-344.
- Lall, S. P. 1991. Salmonid nutrition and feed production. In: *Proceedings of the special session on salmonid aquaculture* (Ed. R. H. Cook and W. Pennel). *World Aquaculture Society*, Los Angeles, CA, pp. 107-123.
- Li, X. F., W. B. Liu, Y. Y. Jiang, H. Zhu, and X. P. Ge. 2010. Effects of dietary protein and lipid levels in practical diets on growth performance and body composition of blunt snout bream (*Megalobrama amblycephala*) fingerlings. *Aquaculture* 303:65-70.
- Li, X. F., Y. Y. Jiang, W. B. Liu, and X. P. Ge. 2012. Protein-sparing effect of dietary lipid in practical diets for blunt snout bream (*Megalobrama amblycephala*) fingerlings: effects on digestive and metabolic responses. *Fish Physiol. Biochem.* 38:529-541.
- Liu, B., X. P. Ge, J. Xie, P. Xu, Y. J. He, Y. T. Cui, J. H. Ming, Q.

- L. Zhou, and L. K. Pan. 2012. Effects of anthraquinone extract from *Rheum officinale* Bail on the physiological responses and HSP70 gene expression of *Megalobrama amblycephala* under *Aeromonas hydrophila* infection. *Fish Shellfish Immunol.* 32:1-7.
- Liu, B., J. Xie, Y. T. Su, J. H. Yu, Y. K. Tang, and X. P. Ge. 2008. Effect of high carbohydrate levels of dietary on growth, GK activities and GK mRNA levels in top mouth culter (*Erythroculter ilishaeformis* Bleeker). *Acta Hydrobiol Sin.* 1: 47-53.
- Liu, M. Z., W. L. Shi, C. W. Zhu, M. Y. Lu, G. L. Wang, and F. Q. Wang. 1992. The effect of dietary lipid level on the growth of blunt snout bream (*Megalobrama amblycephala*) fingerling. *Journal of Fisheries of China* 4:330-336.
- Livak, K. J. and T. D. Schmittgen. 2001. Analysis of relative gene expression data using Real-time quantitative PCR and the $2^{-\Delta\Delta CT}$ method. *Methods* 25:402-408.
- Luo, Y. P. and X. J. Xie. 2010. Effects of high carbohydrate and high lipid diets on growth, body composition and glucose metabolism in southern catfish at two temperatures. *Aquac. Res.* 41:431-437.
- Marklund, S. and G. Marklund. 1974. Involvement of the superoxide anion radical in the autoxidation of pyrogallol and a convenient assay for superoxide dismutase. *Eur. J. Biochem.* 47:469-474.
- Maule, A. G., R. A. Tripp, S. L. Kaattari, and C. B. Schreck. 1989. Stress alters the immune function and disease resistance in Chinook salmon (*Oncorhynchus tshawytscha*). *J. Endocrinol.* 120:135-142.
- Miao, L. H., X. P. Ge, J. Xie, B. Liu, L. K. Pan, Q. L. Zhou, and R. L. Chen. 2011. Effect of high dietary carbohydrates on plasma cortisol levels and HSP70 expression in allogynogenetic crucian carp (*Carassius auratus gibelio*). *J. Fishery Sci. China* 18:819-827 (in Chinese, with English abstract).
- Ming, J. H., J. Xie, P. Xu, W. B. Liu, X. P. Ge, B. Liu, Y. J. He, Y. F. Cheng, Q. L. Zhou, and L. K. Pan. 2010. Molecular cloning and expression of two HSP70 genes in the Wuchang bream (*Megalobrama amblycephala* Yih). *Fish Shellfish Immunol.* 28:407-418.
- Mohapatra, M., N. P. Sahu, and A. Chaudhari. 2003. Utilization of gelatinized carbohydrate in diets in *Labeo rohita* fry. *Aquac. Nutr.* 9:189-196.
- Ou, Y. M., X. Yu, and D. Y. Chen. 2001. Preliminary study on the oxygen consumption rate and asphyxiant point of Wuchang bream in Poyang Lake. *Fisheries Science and Technology in Jiangxi* 88:20-22.
- Pickering, A. D. and P. Pottinger. 1983. Seasonal and diet changes in plasma cortisol levels of the brown trout, *Salmo trutta* L. *Gen. Comp. Endocrinol.* 49:232-239.
- Pieper, A. and E. Pfeffer. 1980. Studies on the effect of increasing proportions of sucrose or gelatinized maize starch in diets for rainbow trout (*Salmo gairdneri*, R.) on the utilization of dietary energy and protein. *Aquaculture* 20:333-342.
- Plummer, P. 1987. Glycogen determination in animal tissues. An Introduction to Practical Biochemistry, 3rd edn. McGraw Hill Book, Maidenhead, pp. 332.
- Roberts, R. J. 1989. Nutritional pathology of teleosts. In: *Fish pathology* (Ed. R. J. Roberts). Bailliere Tindall, London, pp. 337-362.
- Roberts, R. J. and A. M. Bullock. 1989. Nutritional pathology. In: *Fish nutrition* (Ed. J. E. Halver). Academic Press Inc, London, pp. 423-473.
- Shi, W. L., J. Shan, M. Z. Liu, H. Yan, F. Q. Huang, X. W. Zhou, and L. Shen. 1988. A study of the optimum demand of protein by blunt snout bream (*Megalobrama amblycephala*). *FAO library. Report No: FAO-FI-RAS/86/047; FAO-FI-NACA/WP/88/68.* Accession No: 289611.
- Singh, R. K., A. K. Balange, and M. M. Ghughuskar. 2006. Protein sparing effect of carbohydrates in the diet of *Cirrhinus mrigala* (Hamilton, 1822) fry. *Aquaculture* 258:680-684.
- Strickland, J. D. A. and T. R. Parsons. 1968. A practical handbook of seawater analysis, *Fish. Res. Board Can. Bull.* 167:1-11.
- Tan, Q. S., F. Wang, S. Q. Xie, X. M. Zhu, W. Lei, and J. Z. Shen. 2009. Effect of high dietary starch levels on the growth performance, blood chemistry and body composition of gibelio crucian carp (*Carassius auratus* var. gibelio). *Aquaculture Res.* 40:1011-1018.
- Vielma, J., J. Koskela, K. Ruohonen, I. Jokinen, and J. Kettunen. 2003. Optimal diet composition for European whitefish (*Coregonus lavaretus*): carbohydrate stress and immune parameter responses. *Aquaculture* 225:3-16.
- Waagbø, R., J. Glette, K. Sandnes, and G. I. Hemre. 1994. Influence of dietary carbohydrate on blood chemistry, immunity and disease resistance in Atlantic salmon, *Salmo salar* L. *J. Fish Dis.* 17:245-258.
- Wendelaar Bonga, S. E. 1997. The stress response in fish. *Physiol Rev.* 77:591-625.
- Wiik, R., K. Andersen, I. Ulgenes, and E. Egidius. 1989. Cortisol-induced increase in susceptibility of Atlantic salmon, *Salmo salar* together with effects on the blood cell pattern. *Aquaculture* 83:201-215.
- Wilson, R. P. 1994. Utilization of dietary carbohydrate by fish. *Aquaculture* 124:67-80.
- Xiang, R. and D. N. Wang. 1990. The improvement of the method spectrophotometer on lipid peroxides thiobarbituric acid. *Progress in Biochemistry and Biophysics* 17:241-242.
- Yang, G. H., Q. X. Dai, and L. D. Gu. 1989. Nutrition, feed formulation and high-yield aquaculture techniques of blunt snout bream (*Megalobrama amblycephala*). *Feed Industry* 1: 7-10.
- Zhou, J. B., Q. C. Zhou, S. Y. Chi, Q. H. Yang, and C. W. Liu. 2007. Optimal dietary protein requirement for juvenile ivory shell, *Babylonia areolata*. *Aquaculture* 270:186-192.
- Zhu, S. Q. 1995. Synopsis of Freshwater Fishes of China. Jiangsu Science and Technology Publishing House, Nanjing, Jiangsu, China.
- Zhou, W. Y., C. Y. Yu, J. Z. Liu, and G. H. Yang. 1997. Effects of quality and quantity of fat in diet on growth of blunt snout bream (*Megalobrama amblycephala*). *Fish. Sci. Technol. Inf.* 1:3-9.
- Zhou, Z., Z. Ren, H. Zeng, and B. Yao. 2008. Apparent digestibility of various feedstuffs for blunt nose black bream *Megalobrama amblycephala* Yih. *Aquac. Nutr.* 14:153-165.
- Zou, Z., F. Yuan, and S. Chen. 1987. The optimal protein requirement of blunt nose black bream *Megalobrama amblycephala* Yih. *Freshwater Fisheries* 3:21-24.