

Effect of *Polyopes lancifolia* Extract on Oxidative Stress in Human Umbilical Vein Endothelial Cells Induced by High Glucose

Seong Won Min and Ji Sook Han

Department of Food Science and Nutrition, Pusan National University, Busan 609-735, Korea

ABSTRACT: The protective effect of *Polyopes lancifolia* extract on high glucose-induced oxidative stress was investigated using human umbilical vein endothelial cells (HUVECs). High concentration of glucose (30 mM) treatment induced HUVECs cell death, but *Polyopes lancifolia* extract, at concentrations of 25, 50, and 100 µg/mL, protected cells from high glucose-induced damage. Furthermore, thiobarbituric acid reactive substances, intracellular reactive oxygen species, and nitric oxide levels increased by high glucose treatment were effectively decreased by treatment with *Polyopes lancifolia* extract in a dose-dependent manner. Also, *Polyopes lancifolia* extract treatment reduced the overexpressions of inducible nitric oxide synthase, cyclooxygenase-2, and nuclear factor-kappa B proteins activation that was induced by high glucose in HUVECs. These results indicate that *Polyopes lancifolia* extract is a potential therapeutic material that will reduce the damage caused by high glucose-induced-oxidative stress associated with diabetes.

Keywords: *Polyopes lancifolia*, high glucose, oxidative stress, protective effects, HUVECs

INTRODUCTION

Diabetes mellitus is the most serious, chronic metabolic disorder and is characterized by high blood glucose levels (1,2). Currently, an estimated 347 million people worldwide have diabetes, and the World Health Organization (WHO) projects that diabetes deaths will increase by two-thirds between 2008 and 2030 (3). Diabetic complications are related to hyperglycemic levels, especially with the length of exposure to hyperglycemia. Long-term glycemic control is a significant predictor of both micro- and macro-vascular complications (4,5). Micro- and macro-vascular complications of diabetes have complexity of pathogenesis involving functional disorder of vascular endothelial cells, which are sensitive to stimulatory factors such as increased glucose concentration, glycation end products, reduced nerve growth factor, and oxidative stress (6-9).

Oxidative stress is a major contributor to the diabetic vascular complication, which was observed in diabetic patients (6,10,11). High glucose might contribute to increased oxidative stress and the release of reactive oxygen/nitrogen species (ROS/RNS) by several mechanisms (4). Reactive oxygen species (ROS) are generated by oxidative phosphorylation, nicotinamide adenine dinucleotide phosphate oxidase, xanthin oxidase, cytochrome

P450 monooxygenase, and glucose autoxidation (12). Furthermore, hyperglycemia can reduce antioxidant enzyme defenses, thereby allowing ROS to accumulate, resulting in cellular and tissue damage (13,14). For this reason, decline of oxidative stress induced by hyperglycemia is an important issue to reduce the risk of diabetic complications (15).

Polyopes lancifolia (*Harvey*) *kawaguchi et wang* (PL), a type of seaweed usually found off the coast of Republic of Korea and Japan, holds medicinal value (16,17). In a previous study, Kim et al. (17) revealed that bromophenol purified from the PL may have the potential as a natural nutraceutical for α -glucosidase inhibitory activity. However, the specific effect of PL on the endothelial function related to diabetes has not been examined. Therefore, this study was designed to examine the effect of PL on oxidative damage in human umbilical vein endothelial cells induced by high glucose.

MATERIALS AND METHODS

Materials

The red alga, *Polyopes lancifolia* (*Harvey*) *kawaguchi et wang* (PL) was collected along the coast of Jeju Island, Korea. The samples were washed three times with tap water to

Received: December 11, 2012; **Accepted:** February 1, 2013

Correspondence to: Ji Sook Han, Tel: +82-51-510-2836, E-mail: hanjs@pusan.ac.kr

Copyright © 2013 by The Korean Society of Food Science and Nutrition. All rights Reserved.

© This is an Open Access article distributed under the terms of the Creative Commons Attribution Non-Commercial License (<http://creativecommons.org/licenses/by-nc/3.0>) which permits unrestricted non-commercial use, distribution, and reproduction in any medium, provided the original work is properly cited.

remove the salt, epiphytes, and sand attached to the surface, then carefully rinsed with fresh water and freeze-dried. Dried sample was ground and sifted through a 50-mesh standard testing sieve. The sample was extracted with ten volumes of 80% methanol for 12 h three times at room temperature. The filtrate was then vacuum-evaporated to obtain the extract. After PL extract (PLE) was thoroughly dried for complete removal of solvent, the extract was then stored in a deep freezer (Nihon freezer Co., Tokyo, Japan) (-80°C).

Cell culture

Human umbilical vein endothelial cell (HUVECs) and endothelial cell basal medium-2 (EBM-2) bullet kit were purchased from Clonetics Inc. (San Diego, CA, USA). Cells were cultured in EGM-2 containing 2% fetal bovine serum (FBS; GIBCO Inc., Rockville, MD, USA) at 37°C in a humidified atmosphere containing 5% CO_2 , according to the supplier's recommendation and which were used between passages 3 and 6.

Assay of neutral red cell viability

Cell viability was assessed by measuring the uptake of the supravital dye neutral red. Cells (4×10^4 cells/well), cultured in 24-well plates in a humidified atmosphere containing 5% CO_2 at 37°C , were pre-incubated with glucose (5.5 and 30 mM) for 48 h, followed by treatment with various concentrations (25, 50, and 100 $\mu\text{g}/\text{mL}$) of PLE for 20 h. Thereafter, the medium was carefully removed from each well, and replaced with 0.5 mL of fresh medium containing 1.14 mmol/L neutral red. After 3 h of incubation, the medium was removed and the cells were washed twice with phosphate buffered saline (PBS, pH 7.4). The incorporated neutral red was released from the cells by incubation in the presence of 1 mL of cell lysis buffer [50 mmol/L Tris-HCl (pH 7.4), 150 mmol/L NaCl, 5 mmol/L dithiothreitol (DTT), and Triton X-100 (1%, v/v)] containing acetic acid (1%, v/v) and ethanol (50%, v/v) at room temperature for 15 min. To measure the dye taken up, the cell lysis products were centrifuged and absorbance of supernatant was measured spectrophotometrically at 540 nm.

Assay of lipid peroxidation

Lipid peroxidation, which was caused by influence of ROS generated with high glucose-induced oxidative damage in the cells, was measured by thiobarbituric acid reactive substances production. Cells (4×10^4 cells/well) were seeded in a 24-well plate and pre-incubated with glucose (5.5 and 30 mM) in humidified atmosphere containing 5% CO_2 at 37°C for 48 h. After 48 h of incubation, the cells were treated with various concentrations (25, 50, and 100 $\mu\text{g}/\text{mL}$) of PLE and further incubated for 20 h. A 200 μL sample of each medium su-

pernatant was mixed with 400 μL of TBARS solution then boiled at 95°C for 20 min. The absorbance at 532 nm was measured and TBARS concentrations were extrapolated from the 1,1,3,3-tetraethoxypropane serial dilution standard curve. TBARS values were then expressed as equivalent nmoles of malondialdehyde (MDA).

Assay of intracellular ROS levels

Intracellular ROS levels were measured by the 2',7'-dichlorofluorescein diacetate (DCF-DA) assay. DCF-DA can be deacetylated in cells, where it can react quantitatively with intracellular radicals to convert into its fluorescent product, DCF, which is retained within the cells. Therefore, DCF-DA was used to evaluate the generation of ROS in oxidative damage. Cells (2×10^4 cells/well) were seeded in a 96-well plate and pre-incubated with glucose (5.5 and 30 mM) in humidified atmosphere containing 5% CO_2 at 37°C for 48 h. After 48 h of incubation, the cells were treated with various concentrations (25, 50, and 100 $\mu\text{g}/\text{mL}$) of PLE and further incubated for 20 h. Thereafter, the medium was removed and the cells were washed twice with PBS (pH 7.4) and then incubated with 100 μM DCF-DA for 90 min at room temperature. Fluorescence was measured using a fluorescence plate reader (BMG LABTECH GmbH, Offenberg, Germany).

Assay of nitric oxide (NO) levels

The amount of nitrite accumulation, the end product of NO generation, was assessed by the Griess reaction. Cells (2×10^4 cells/well) were seeded in a 96-well plate and pre-incubated with glucose (5.5 and 30 mM) in humidified atmosphere containing 5% CO_2 at 37°C for 48 h. After 48 h of incubation, the cells were treated with various concentrations (25, 50, and 100 $\mu\text{g}/\text{mL}$) of PLE and further incubated for 20 h. Thereafter, each 50 μL of culture supernatant was mixed with an equal volume of Griess reagent [0.1% N-(1-naphthyl)-ethylenediamine, 1% sulfanilamide in 5% phosphoric acid] and incubated at room temperature for 10 min. The absorbance at 550 nm was measured in a microplate absorbance reader (Bio-Rad Laboratories Inc., Hercules, CA, USA), and a series of known concentrations of sodium nitrite was used as a standard.

Total and nuclear protein extracts

Cells were homogenized with ice-cold lysis buffer containing 250 mM NaCl, 25 mM Tris-HCl (pH 7.5), 1% v/v NP-40, 1 mM DTT, 1 mM PMSF, and protein inhibitor cocktail (10 $\mu\text{g}/\text{mL}$ aprotinin, 1 $\mu\text{g}/\text{mL}$ leupeptin). The cells were then centrifuged at $20,000 \times g$ for 15 min at 4°C . The supernatants were used as total protein extracts. For nuclear protein extracts, cells were homogenized with ice-cold lysis buffer containing 50 mM

Tris-HCl (pH 7.5), 10 mM MgCl₂, 15 mM CaCl₂, 1.5 M sucrose, 1 mM DTT, and protease inhibitor cocktail (10 µg/mL aprotinin, 1 µg/mL leupeptin). Then, the cells were centrifuged at 11,000×g for 20 min at 4°C. The supernatants were resuspended with extraction buffer containing 20 mM HEPES (pH 7.9), 1.5 mM MgCl₂, 0.42 M NaCl, 0.2 mM EDTA, 25% (v/v) glycerol, 10 mM DTT, and protease inhibitor cocktail (10 µg/mL aprotinin, 1 µg/mL leupeptin). The samples were shaken gently for 30 min and centrifuged at 21,000×g for 5 min at 4°C. The pellets were used as nuclear protein extracts. The total and nuclear protein contents were determined by the Bio-Rad protein kit (Bio-Rad Lab.) with BSA as the standard.

Immunoblotting

iNOS, COX-2 expressions and NF-κB p65 DNA-binding activity were determined by western blot analysis. Total protein (20 µg) for iNOS, COX-2 protein levels and nuclear protein (20 µg) for NF-κB were electrophoresed through 10% sodium dodecyl sulfate-polyacrylamide gel (SDS-PAGE). Separated proteins were transferred electrophoretically to a pure nitrocellulose membrane, blocked with 5% skim milk solution for 1 h, and then incubated with primary antibodies (1:1,000; Abcam, Cambridge, UK) overnight at 4°C. After washing, the blots were incubated with goat anti-rabbit or goat anti-mouse IgG HRP conjugated secondary antibody for 1 h at room temperature. Each antigen-antibody complex was visualized using ECL Western Blotting Detection Reagents and detected by chemiluminescence with LAS-1000 plus (FUJIFILM, Tokyo, Japan). Band densities were determined by an image analyzer (Multi Gauge V3.1, FUJIFILM Corp., Valhalla, NY, USA) and normalized to β-actin for total protein and nuclear protein.

Statistical analysis

The data are represented as the mean±standard error (SE) of triplicate experiments. The statistical analysis was performed using SAS 9.0 software (SAS Institute Inc., Cary, NC, USA). The values were evaluated by one-way analysis of variance (ANOVA) followed by post hoc Duncan's multiple range tests, and p-values of less than 0.05 were considered statistically significant.

RESULTS AND DISCUSSION

Neutral red cell viability

Fig. 1 shows the effect of *Polyopes lancifolia* extract (PLE) on cell viability in HUVECs treated with high glucose of 30 mM. When HUVECs were treated with 30 mM glucose for 48 h, the cell viability significantly decreased. Cell viability was decreased to 26.1% in 30 mM glu-

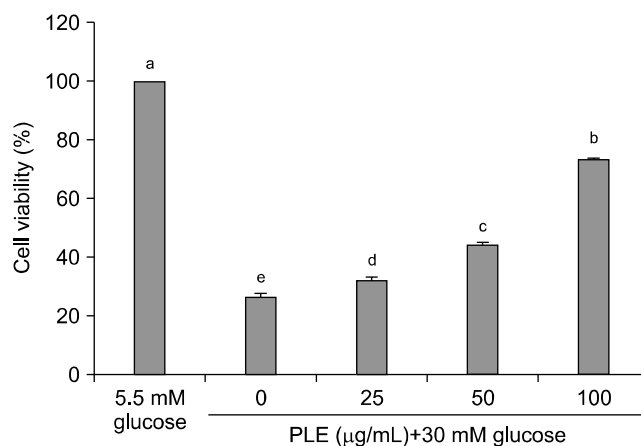


Fig. 1. Effect of PLE on cell viability in high-glucose-treated HUVECs. Cells in 24-well plates (4×10^4 cells/well) were pre-incubated with 5.5 or 30 mM glucose for 48 h, and then incubated in the absence of PLE or 25, 50, or 100 µg/mL of PLE for 20 h. The use of 5.5 mM glucose represents normal glucose and 30 mM represents high glucose. Each value is expressed as mean±SD (n=3). ^{a-e}Values with different alphabets are significantly different at p<0.05 as analyzed by Duncan's multiple range test.

cose-treated HUVECs, but PLE protected the cells from high glucose-induced damage, and reviving cell survival was significantly increased to 32.2%, 44.1%, and 73.4% at the concentrations of 25, 50, and 100 µg/mL, respectively.

Cell viability under oxidative stress induced by high glucose was measured by the neutral red uptake assay as reflected by lysosomal functions. Neutral red is uptaken into a cell owing to lysosomal activities (15). Our results evidenced that neutral red uptake was decreased owing to high glucose treatment, indicating that high glucose concentration might have a negative effect on the cell survival rate. However, the cell viability significantly increased with the addition of PLE in a dose-dependent manner. These findings suggest that PLE has the ability to protect the cell surface and lysosomal membranes of HUVECs from oxidative damage induced by high glucose treatment.

Lipid peroxidation

Inhibitory effect of PLE against lipid peroxidation induced by a high glucose was determined by measuring thiobarbituric acid reactive substance (TBARS). When HUVECs were incubated with 5.5 mM or 30 mM glucose for 48 h, TBARS level in the 30 mM glucose-treated HUVECs was significantly increased in comparison to the cells treated with 5.5 mM glucose. However, PLE protected lipid peroxidation of the cells in a dose-dependent manner. Importantly, TBARS was significantly decreased by 0.13 nmol MDA in the cells treated with 50 µg/mL of PLE together with high glucose.

Lipid peroxidation is one of the important interme-

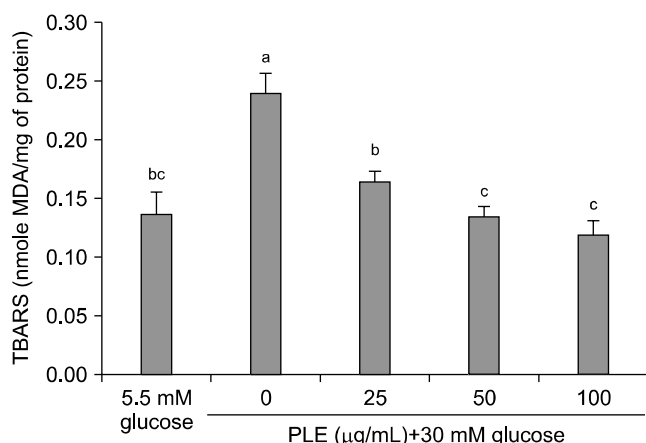


Fig. 2. Effect of PLE on TBARS generation in high-glucose-treated HUVECs. Cells in 24-well plates (4×10^4 cells/well) were preincubated with glucose and incubated in the absence or presence of PLE as described in the legend to Fig. 1. Each value is expressed as mean \pm SD ($n=3$). ^{a-c}Values with different alphabets are significantly different at $p < 0.05$ as analyzed by Duncan's multiple range test.

diary events in oxidative stress-induced cellular damage (18). In our study, high glucose induced lipid peroxidation in HUVECs and PLE inhibited TBARS formation effectively (Fig. 2). Lipid peroxidation is one of the consequences of oxidative stress and can be the cause of cell injury (19). In particular, the polyunsaturated fatty acid located in cellular membranes is highly prone to attack, which results in the generation of lipid peroxides (20). Lately, the levels of TBARS are increased in diabetic patients with hyperglycemia (21). Therefore, the inhibition of lipid peroxidation is considered to be an important index of antioxidant activity as well as anti-diabetic activity induced by oxidative stress.

Intracellular ROS generation

In an effort to express the effect of PLE on intracellular ROS induced by high glucose of 30 mM, we used DCF-DA as a probe for ROS measurement (Fig. 3). Production of ROS was substantially increased in the cells treated with the high glucose compared to the normal glucose treated cells. However, PLE inhibited the high glucose induced ROS production. Particularly, treatment with 100 $\mu\text{g/mL}$ of PLE resulted in a significant decrease in intracellular ROS to 99.6%.

ROS are considered to be important mediators of several biologic responses, including cell proliferation, and extracellular matrix deposition. Recent observations indicated that hyperglycemia induces the generation of ROS and oxidative stress in various cell types (22). High ROS levels induce oxidative stress, which can result in a variety of biochemical and physiological lesions. Such cellular damage often injures metabolic function and leads to cell death (23). Our results showed that high glucose-treated cells increased the intracellular ROS lev-

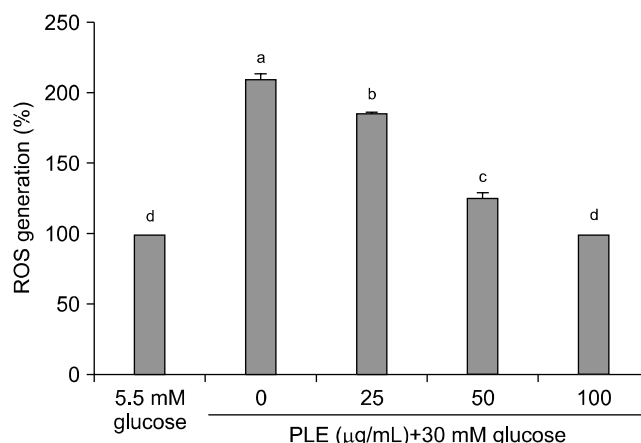


Fig. 3. Effect of PLE on intracellular ROS generation in high-glucose-treated HUVECs. Cells in 24-well plates (4×10^4 cells/well) were preincubated with glucose and incubated in the absence or presence of PLE as described in the legend to Fig. 1. Each value is expressed as mean \pm SD ($n=3$). ^{a-d}Values with different alphabets are significantly different at $p < 0.05$ as analyzed by Duncan's multiple range test.

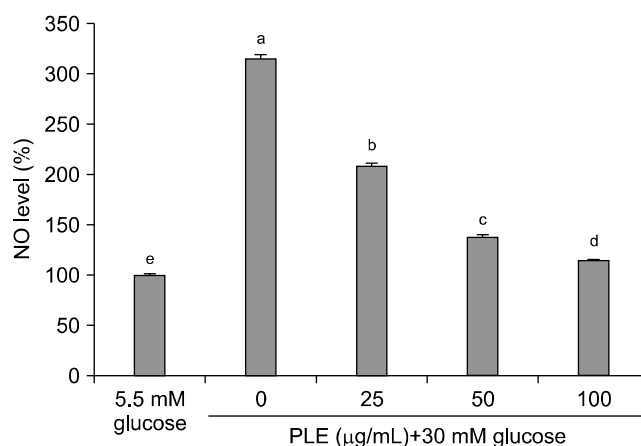


Fig. 4. Effect of PLE on NO level in high-glucose-treated HUVECs. Cells in 24 well plates (4×10^4 cells/well) were preincubated with glucose and incubated in the absence or presence of PLE as described in the legend to Fig. 1. Each value is expressed as mean \pm SD ($n=3$). ^{a-e}Values with different alphabets are significantly different at $p < 0.05$ as analyzed by Duncan's multiple range test.

el compared to normal glucose treatment while PLE significantly decreased the high glucose-induced ROS generation. These results suggest that PLE reduces oxidative stress via inhibiting ROS generation induced by high glucose treatment.

NO generation

As shown in Fig. 4, the level of NO in HUVECs was significantly increased by 30 mM glucose treatment (315.9%) compared to 5.5 mM glucose treatment. However, NO levels in PLE treated cells decreased significantly in a concentration-dependent manner, especially treatment with 100 $\mu\text{g/mL}$ of PLE resulting in a significant decrease in intracellular NO to 114.2%.

The study have reported that high glucose treatment leads to overproduction of NO and O_2^- , which induces endothelial cell dysfunction (15). Hyperglycemia was related to an increase in NO production with a parallel enhancement of nitrotyrosine due to the attendant generation of superoxide radical and the consequent formation of peroxynitrite (24). NO reaction with superoxide anion (O_2^-) leads to the formation of peroxynitrite ($ONOO^-$), which can be decomposed, generating hydroxyl radicals ($\cdot OH$) and nitrogen dioxide radicals ($\cdot NO_2$). In addition, NO is one of the targets on intracellular antioxidative enzymes, resulting in the loss of their function (25,26). In this study, PLE effectively decreased NO production by high glucose induced oxidative stress. These results suggest that PLE might act effectively for NO levels and afford important protection against the oxidative stress induced by hyperglycemia.

iNOS and COX-2 expressions

After incubation for 48 h, iNOS and COX-2 protein lev-

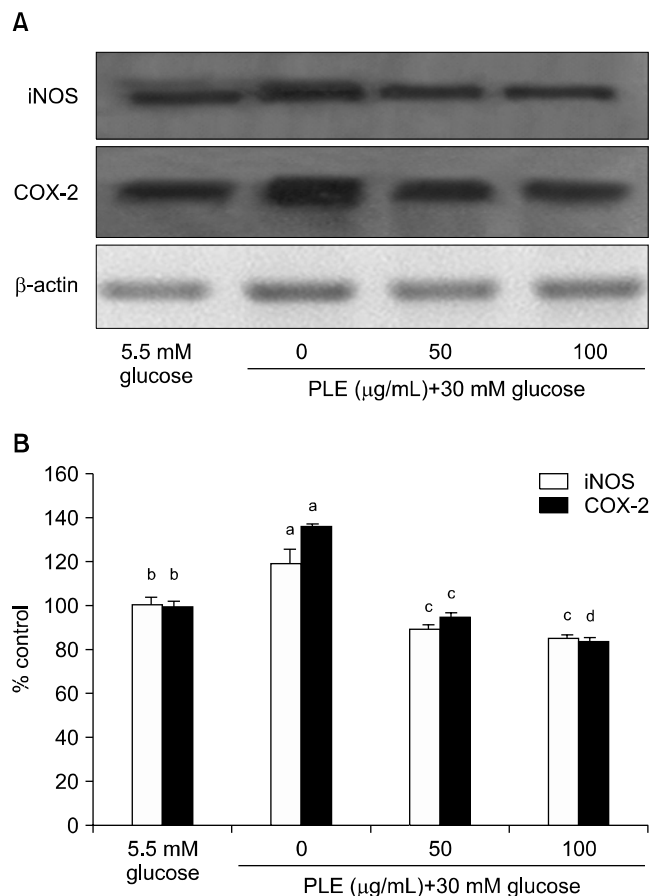


Fig. 5. Effect of PLE on high glucose-induced iNOS and COX-2 expressions in HUVECs. Equal amounts of cell lysates (30 μ g) were subjected to electrophoresis and analyzed for iNOS and COX-2 expressions by western blot. Actin was used as an internal control. (A) iNOS and COX-2 protein expressions, (B) expression levels of iNOS and COX-2. Each value is expressed as the mean \pm SD (n=3). ^{a-d}Values with different alphabets are significantly different at $p < 0.05$ as analyzed by Duncan's multiple range test.

els were increased in 30 mM glucose treated HUVECs (Fig. 5). Densitometric analysis showed that iNOS and COX-2 protein levels in 30 mM glucose treated cells were 120% and 140% higher than those of 5 mM glucose, respectively. However, 50 μ g/mL PLE treatment reduced these expression levels remarkably.

The proinflammatory enzymes, including iNOS and COXs, are known to be involved in the pathogenesis of many chronic diseases associated with oxidative stress (27). The level of NO released from iNOS under stimulation, such as high glucose or inflammatory conditions, is significantly elevated and forms the potent free radical $ONOO^-$ when combined with O_2^- (28). Therefore, an increase in iNOS production has been proposed to be responsible for multiple organ dysfunctions (29) and selective iNOS inhibition has been shown to attenuate or prevent this syndrome (30). COXs have been found in two forms, COX-1 and COX-2. COX-1, a housekeeping enzyme, is constitutively expressed in almost all mammalian tissues, but COX-2 is barely detectable under normal physiological conditions (31). As shown by our present study, high glucose induced the overexpression of COX-2 protein, and this was concentration-depend-

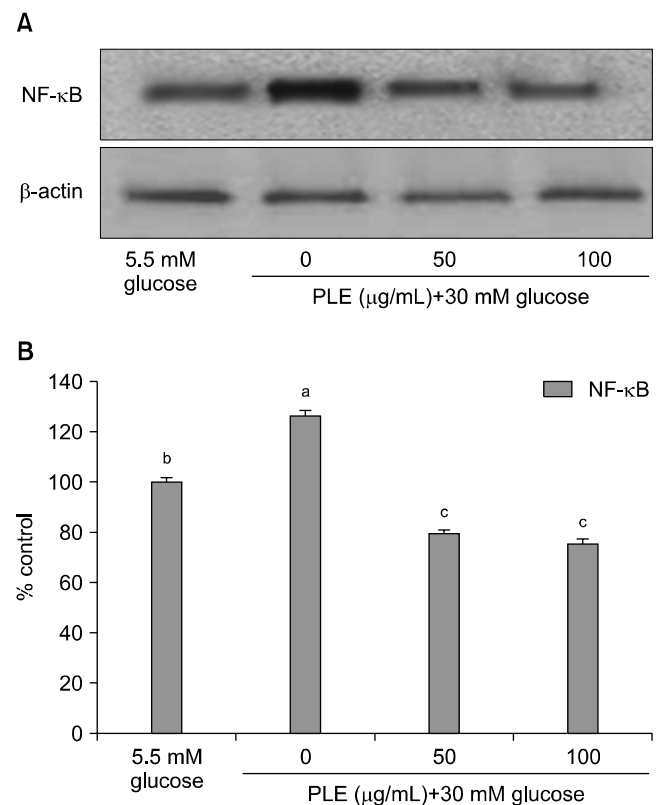


Fig. 6. Effect of PLE on high glucose-induced NF- κ B p65 activation in HUVECs. Equal amounts of cell lysates (30 μ g) were subjected to electrophoresis and analyzed for NF- κ B activity by western blot. Actin was used as an internal control. (A) NF- κ B p65 protein expression, (B) expression level of NF- κ B p65. Each value is expressed as the mean \pm SD (n=3). ^{a-c}Values with different alphabets are significantly different at $p < 0.05$ as analyzed by Duncan's multiple range test.

ently inhibited by treatment with PLE. Both iNOS and COX-2 are often present together and play fundamental roles in similar pathophysiological conditions, such as inflammation and chronic diseases associated with oxidative stress (32).

NF- κ B activity

We determined the effect of PLE on NF- κ B p65 activity because p65 is the major component of NF- κ B in high glucose stimulated cells. The level of NF- κ B p65 activity was obviously higher in 30 mM glucose-treated HUVECs compared to 5.5 mM glucose treatment (Fig. 6). However, when PLE concentration of 50 and 100 μ g/mL were added to HUVECs, NF- κ B p65 activities were decreased markedly; a significant inhibition of NF- κ B activity was seen after 50 μ g/mL of PLE treatment.

NF- κ B p65, an oxidative stress responsive transcription factor, plays a significant role in the mechanism of cell injury and in the induction of iNOS and COX-2, which are both expressed as a result of NF- κ B activation (33,34). In particular, NF- κ B is activated in cells cultured under conditions of high glucose concentrations (35,36) and might play an important role in diabetes. There is evidence that exposure with endothelial cells under high glucose concentration induces the increase of NF- κ B p65 activity and that specific inhibitors of the NF- κ B factor significantly decreases high glucose-induced enhanced monocyte adhesion (37). In summary, this study demonstrated that PLE ameliorates an oxidative stress state induced by high glucose by its ability to suppress lipid peroxidation, ROS and NO production. Additionally, the data showed that PLE suppresses the oxidative stress process by modulating iNOS, COX-2, and NF- κ B p65 activity.

ACKNOWLEDGMENTS

This research was supported by Basic science Research Program through the National Research Foundation of Korea (NRF) funded by the Ministry of Education, Science and Technology.

REFERENCES

1. Corry DB, Tuck ML. 2000. Protection from vascular risk in diabetic by pretension. *Curr Hypertens Rep* 2: 154-159.
2. Krentz AJ, Clough G, Byren CD. 2007. Interaction between microvascular and macrovascular disease in diabetes: pathophysiology and therapeutic implications. *Diabetes Obes Metab* 9: 781-791.
3. World Health Organization (WHO). Update 2012. <http://www.who.int/mediacentre/factsheets/fs312/en/>.
4. Kaplan M, Aviram M, Hayek T. 2012. Oxidative stress and macrophage foam cell formation during diabetes mellitus-induced atherogenesis: Role of insulin therapy. *Pharmacol Ther* 136: 175-185.
5. Diabetes Control and Complications Trial Research Group. 1993. The effect of intensive treatment of diabetes on the development and progression of long-term complications in insulin-dependent diabetes mellitus. *N Engl J Med* 329: 977-986.
6. Hiramatsu K, Arimori S. 1998. Increased superoxide production by mononuclear cells of patients with hypertriglyceridemia and diabetes. *Diabetes* 37: 832-837.
7. Van Dam PS, Van Asbeck BS, Van Oirschot JF, Biessels GJ, Hamers FP, Marx JJ. 2001. Glutathione and alpha-lipoate in diabetic rat: nerve function, blood flow and oxidative state. *Eur J Clin Invest* 31: 417-424.
8. Feldman EF. 2003. Oxidative stress and diabetic neuropathy: a new understanding of an old problem. *J Clin Invest* 111: 431-433.
9. Park MJ, Song YS, Han JS. 2006. Protective effects of the BuOH fraction from *Laminaria japonica* extract on high glucose-induced oxidative stress in human umbilical vein endothelial cells. *J Food Sci Nutr* 11: 94-99.
10. Tsuneki H, Sekizaki N, Suzuki T, Kobayashi S, Wada T, Okamoto T, Kimura I, Sasaoka T. 2007. Coenzyme Q10 prevents high glucose-induced oxidative stress in human umbilical vein endothelial cells. *Eur J Pharmacol* 566: 1-10.
11. Dewanjee S, Das AK, Sahu R, Gangopadhyay M. 2009. Antidiabetic activity of *Diospyros peregrina* fruit: effect on hyperglycemia, hyperlipidemia and augmented oxidative stress in experimental type 2 diabetes. *Food Chem Toxicol* 47: 2679-2685.
12. Saini AK, Arun KHS, Sharma SS. 2007. Preventive and curative effect of edaravone on nerve functions and oxidative stress in experimental diabetic neuropathy. *Eur J Pharmacol* 568: 164-172.
13. Giugliano D, Ceriello A, Paolisso G. 1996. Oxidative stress and diabetic vascular complications. *Diabetes Care* 19: 257-267.
14. Baynes JW, Thorpe SR. 1999. Role of oxidative stress in diabetic complications: a new perspective on an old paradigm. *Diabetes* 48: 1-9.
15. Zanetti M, Zwacka R, Engelhardt J, Katusic Z, O'Brien T. 2001. Superoxide anions and endothelial cell proliferation in normoglycemia and hyperglycemia. *Arterioscler Thromb Vasc Biol* 21: 195-200.
16. Mineur F, Clerck OD, Roux AL, Maggs CA, Verlaque M. 2010. *Polyopes lancifolius* (Halymeniales, Rhodophyta), a new component of the Japanese marine flora introduced to Europe. *Phycologia* 49: 86-96.
17. Kim KY, Nguyen TH, Kurihara H, Kim SM. 2010. α -glucosidase inhibitory activity of bromophenol purified from the red alga *Polyopes lancifolia*. *J Food Sci* 75: 145-150.
18. Sevanian A, Hochstein P. 1985. Mechanism and consequence of lipid peroxidation in biological systems. *Annu Rev Nutr* 5: 365-390.
19. Schmidtmann S, Muller M, von Baehr R, Precht K. 1991. Changes of antioxidative homeostasis in patients on chronic haemodialysis. *Nephrol Dial Transpl* 6: 71-74.
20. Halliwell B, Gutteridge JMC. 1999. *Free Radicals in Biology and Medicine*. 3rd ed. Oxford University Press, Oxford, UK. p 617-783.
21. Seghrouchni I, Draï J, Bannier E, Riviere J, Calmard P, Garcia I, Orgiazzi J, Revol A. 2002. Oxidative stress parameters in type I, type II and insulin-treated type 2 diabetes mellitus; insulin treatment efficiency. *Clin Chim Acta* 321: 89-96.
22. Lee YJ, Kang DG, Kim JS, Lee HS. 2008. *Lycopodium lucidus* inhibits high glucose-induced vascular inflammation in human umbilical vein endothelial cells. *Vasc Pharmacol* 48:

- 38-46.
23. Finkel T, Holbrook NJ. 2000. Oxidants, oxidative stress and the biology of aging. *Nature* 408: 239-247.
 24. Pereira EC, Ferderbar S, Bertolami MC, Faludi AA, Monte O, Xavier HT, Pereira TV, Abdalla DS. 2008. Biomarkers of oxidative stress and endothelial dysfunction in glucose intolerance and diabetes mellitus. *Clin Biochem* 41: 1454-1460.
 25. Corbett JA, McDaniel ML. 1992. Does nitric oxide mediate autoimmune destruction on β -cells? Possible therapeutic interventions in IDDM. *Diabetes* 41: 897-903.
 26. Hogg N, Darley-Usmar VM, Graham A, Moncada S. 1993. Peroxynitrite and atherosclerosis. *Biochem Soc Trans* 21: 358-362.
 27. Lee SH, Han JS, Heo SJ, Hwang JY, Jeon YJ. 2009. Protective effects of dieckol isolated from *Ecklonia cava* against high glucose-induced oxidative stress in human umbilical vein endothelial cells. *Toxicol In Vitro* 24: 375-381.
 28. Spencer NF, Poynter ME, Im SY, Daynes RA. 1997. Constitutive activation of NF-kappa B in an animal model of aging. *Int Immunol* 9: 1581-1588.
 29. Thiemermann C, Ruetten H, Wu CC, Vane JR. 1995. The multiple organ dysfunction syndrome caused by endotoxin in the rat: attenuation of liver dysfunction by inhibitors of nitric oxide synthase. *Br J Pharmacol* 116: 2845-2851.
 30. Liaudet L, Rosselet A, Schaller MD, Markert M, Perret C, Feihl F. 1998. Nonselective versus selective inhibition of inducible nitric oxide synthase in experimental endotoxic shock. *J Infect Dis* 177: 127-132.
 31. Yokozawa T, Kim YA, Kim HY, Lee YA, Nonaka G. 2007. Protective effect of persimmon peel polyphenol against high glucose-induced oxidative stress in LLC-PK(1) cells. *Food Chem Toxicol* 45: 1979-1987.
 32. Wu KK. 1995. Inducible cyclooxygenase and nitric oxide synthase. *Adv Pharmacol* 33: 179-190.
 33. Baeuerle PA, Baltimore D. 1996. NF-kappa B: ten years after. *Cell* 87: 13-20.
 34. Han M, Wen JK, Zheng B, Zhang DQ. 2004. Acetylbri-tannilatone suppresses NO and PGE2 synthesis in RAW 264.7 macrophages through the inhibition of iNOS and COX-2 gene expression. *Life Sci* 75: 675-684.
 35. Du X, Stocklauser-Färber K, Rösen P. 1999. Generation of reactive oxygen intermediates, activation of NF-kappaB, and induction of apoptosis in human endothelial cells by glucose: role of nitric oxide synthase? *Free Radic Biol Med* 27: 752-763.
 36. Hattori Y, Hattori S, Sato N, Kasai K. 2000. High-glucose-induced nuclear factor kappa B activation in vascular smooth muscle cells. *Cardiovasc Res* 46: 188-197.
 37. Morigi M, Angioletti S, Imberti B, Donatelli R, Micheletti G, Figliuzzi M, Remuzzi A, Zoja C, Remuzzi G. 1998. Leukocyte-endothelial interaction is augmented by high glucose concentration and hyperglycemia in a NF- κ B dependent fashion. *J Clin Invest* 101: 1905-1915.