

EPS Production, PHB Accumulation and Abiotic Stress Endurance of Plant Growth Promoting *Methylobacterium* Strains Grown in a High Carbon Concentration

Sungman Woo, Parthiban Subramanian, Krishnamoorthy Ramasamy,
M. Melvin Joe, and Tongmin Sa*

Department of Environmental and Biological Chemistry, Chungbuk National University,
Cheongju, 361-763, Korea

In this study, we compared growth pattern, floc yield, Exo-polysaccharides (EPS) production, Poly- β -hydroxybutyrate (PHB) accumulation, resistance to osmotic and acid stress in *Methylobacterium* strains CBMB20, CBMB27, CBMB35, and CBMB110. Modified high C:N ratio medium denoted as HCN-AMS medium was used with a C:N ratio of 30:1. The HCN-AMS medium favored increased growth in all the studied strains. All *Methylobacterium* strains tested positive for EPS production and showed positive fluorescence with calcoflour stain. Elevated levels of EPS production from 4.2 to 75.0% was observed in HCN-AMS medium. Accumulation of PHB in HCN-AMS medium increased by 3.8, 36.7, and 12.0% in strains CBMB27, CBMB35, and CBMB110 respectively. Among the abiotic stresses, osmotic stress-induced growth inhibition of *Methylobacterium* strains was found to be lowered when grown in HCN-AMS medium. Likewise, growth inhibition due to acid stress at pH 5.0 was lower for strains grown in HCN-AMS medium compared to growth in AMS medium. Enhanced survivability under stress conditions may be attributed to the high EPS and PHB production at increased carbon concentration in the growth medium.

Key words: *Methylobacterium*, AMS medium, HCN-AMS medium, EPS production, PHB accumulation, Stress endurance efficiency

Introduction

Members of the genus *Methylobacterium*, often referred to as pink-pigmented facultative methylotrophic bacteria (PPFMs) are distributed in soil, leaves and various other parts of plant (Corpe and Rheme, 1989; Green, 2001). These bacteria utilize methanol produced out of the stomata of plants, and are also able to grow on a variety of C₂, C₃, and C₄ compounds (Corpe, 1985). Although PPFMs often dominate the phyllosphere region of plants (Corpe and Rheem, 1989), their presence in the rhizosphere has also been reported (Idris et al., 2004; Omer et al., 2004). They benefit the plants they colonize by production of indole acetic acid, cytokinins and vitamin B₁₂ and through endophytic and endo-symbiotic relationships with plants (Omer et al., 2004; Knief et al., 2008). Their

association with more than 70 plant species makes them potential agents for plant growth promotion and bio control against diseases (Holland and Polacco, 1994).

In spite of their studied plant growth promotional traits, commercialization of the *Methylobacterium* strains as bioinoculant have been hindered constantly owing to lack of appropriate formulation. Inoculant formulation is important in providing a suitable microenvironment during storage in different carrier material and in preventing rapid decline of introduced bacteria in the soil (Bashan, 1998). Van Elsas and Heijnen (1990) suggested that formulations lacking these characteristic features will be unacceptable in the agricultural market.

The physiological status of microorganisms in a bioinoculant formulation is considered more important than their cell numbers to ensure higher survival in carriers, soil and seed Catroux et al. (2001). One such approach for inoculant preparation is based on the induction of massive cell aggregation, clumping and flocculation (Sadasivan and Neyra, 1985). Neyra et al. (1995) produced inoculants

containing a mixture, of both *Azospirillum* and *Rhizobium*, by coflocculation forming intergeneric coaggregates. They also reported that these cells can be grown on a large scale and used as inoculants in agriculture.

Although aggregation/flocculation has been reported among various *Methylobacterium* spp. such as *Methylobacterium organophilum* (Choi, 1998), *Methylobacterium adhaesivum* AR27 (Gallego et al. 2006), and *Methylobacterium marchantiae* JT1 (Schauer et al., 2011), this phenomenon has never been studied extensively among *Methylobacterium* spp. Moreover, no attempt to the best of our knowledge has been made to develop *Methylobacterium* aggregated cells as bioinoculants for agriculture.

The present study evaluated *Methylobacterium* strains CBMB20, CBMB27, CBMB35, and CBMB110 for their growth pattern, floc yield, Exo-polysaccharides (EPS) production, Poly- β -hydroxybutyrate (PHB) accumulation and stress endurance efficiency. Ammonium mineral salt (AMS) medium is a selective media used to grown and maintain *Methylobacterium* strains (Madhayan, 2007). In the present study AMS medium was modified by increasing carbon concentration to attain a C:N ratio of 30:1.

Materials and Methods

Studies on culture conditions for maximizing aggregation *Methylobacterium* strains grown in ammonium mineral salt (AMS) media with 0.5% sodium succinate were transferred to 25 mL AMS broth and incubated at 30°C on a shaker incubator (150 rpm) for 72 h. After 72 h incubation, 1.0 mL of culture (1×10^8 cfu mL⁻¹) was transferred to 100 mL fresh AMS broth and the culture was allowed to grow for another 72 h. To obtain a maximum aggregation/flocculation and for enhanced accumulation of EPS and PHB, AMS medium was modified by increasing the carbon concentration. The carbon source of AMS, sodium succinate concentration was increased to 1.1% and the final C:N ratio in the media was set to 30:1. This modified high C:N ratio medium was denoted as HCN-AMS medium elsewhere in the text. The composition of AMS media is given in Table 1.

Quantification of the flocculation The flocs were harvested on the 3rd day of incubation by filtering the flocs through whatman filter paper (No. 1). For dry weight determination, the filter paper with the flocs were placed

Table 1. Composition of ammonium mineral salt (AMS) medium.

Chemicals	Amount per liter
NH ₄ Cl	0.50 g
K ₂ HPO ₄	0.70 g
KH ₂ PO ₄	0.54 g
MgSO ₄ · 7H ₂ O	1.00 g
CaCl ₂ · 2H ₂ O	0.200 g
FeSO ₄ · 7H ₂ O	4.00 mg
ZnSO ₄ · 7H ₂ O	100.00 µg
MnCl ₂ · 4H ₂ O	30.00 µg
H ₃ BO ₃	300.00 µg
CoCl ₂ · 6H ₂ O	200.00 µg
CuCl ₂ · 2H ₂ O	10.00 µg
NiCl ₂ · 6H ₂ O	20.00 µg
Na ₂ MoO ₄ · 2H ₂ O	60.00 µg
Sodium succinate	5.00 g
pH	6.80

In HCN-AMS medium concentration of sodium succinate 11.0 g and NH₄Cl concentration to 0.25 g.

in a desiccator oven at 60°C for 2 h and weighed. The weight of the filter paper was then excluded and floc yield was expressed as mg per liter of medium (mg L⁻¹).

Qualitative/ Quantitative assay for EPS production

Qualitative estimation of EPS production Plates containing Calcofluor white were used to qualitatively examine EPS production (Dana and Shimkets, 1993; Ramaswamy et al., 1997). Briefly, 5 µL of a cell suspension at 5×10^9 cells mL⁻¹ was spotted onto CYE plates supplemented with Calcofluor white (50 µg mL⁻¹). These plates were incubated at 32°C for 5 days before documentation. Calcofluor white plates were examined under long-wave UV (365 nm) for fluorescence, which is indicative of dye binding and EPS production.

Quantitative estimation of EPS production Bacterial EPS content was estimated according to the protocol of Celik et al. (2008). Bacterial strains grown in the HCN-AMS medium were harvested by centrifugation (5000 × g, washed with saline 0.9% NaCl w/v) and the resulting pellets were stirred with glass beads to detach EPS associated with the bacterial cells. The supernatant

was then removed by centrifugation ($10,000 \times g$ for 30 min, 4°C) and to the pellet, six volumes of 95% ethanol was added and allowed to precipitate over night at 4°C . Precipitated EPS were recovered by centrifugation ($12,000 \times g$ for 30 min, 4°C), and the resulting pellets were dissolved in distilled water. Total EPS content was estimated by phenol-sulphuric method using glucose as standard.

Qualitative/Quantitative assay for PHB production

Qualitative estimation of PHB Two microscopic techniques were used to detect PHB producing bacteria. Phase contrast microscopy detects brightly refractile cytoplasmic inclusions (RCI) in axenic cultures of PHB producing bacteria (López-Cortés et al., 2008). The lipophilic stain, Sudan Black was used to identify PHB under bright field and epifluorescence microscopes, respectively. Sudan Black staining was performed on heat-fixed samples and the staining solution was prepared by dissolving 0.3 g Sudan Black B in 75 mL of 95% ethanol, and the volume brought to 100 mL with distilled water. Samples were stained with Sudan Black solution for 10 min, blot dried with filter paper, and clarified with xylene drops, dried again with filter paper, and counter stained with 0.5% aqueous safranin for 5 s (López-Cortés, 2008).

Quantitative estimation of PHB Bacterial cell cultures grown HCN-AMS medium were harvested and the pellets were resuspended in sodium hypochloride, of the same original volume of medium. After 1 h incubation at 37°C , the lipid granules (PHB) were centrifuged, washed with distilled water, and subsequently washed with acetone and ethanol. The polymer of PHB was dissolved by extraction with three small portions of boiling chloroform; the chloroform solution was filtered, and the filtrate was used. The excess of chloroform was evaporated, and 10 mL of concentrated H_2SO_4 was added and heated for 10 min at 100°C in a boiling water bath to convert PHB to crotonic acid. PHB was determined as crotonic acid and quantified by spectrophotometer at 235 nm. A standard curve with commercial PHB (Sigma) was made to determine the PHB present in the samples (Karr et al., 1983; Reusch and Sadoff, 1983).

Stress endurance efficiency under different induced stress conditions

Stress endurance experiments were carried out according to Kadouri et al. (2003) with a slight modification. For each experiment the initial number of bacterial cells was maintained higher than $9 \log \text{cfu mL}^{-1}$. The effect of osmotic stress was determined by exposing the bacterial cells to 150 mM, 200 mM and 250 mM NaCl for 30 min at 42°C . The effect of acid stress was determined by exposing the bacterial cells to 330 mM sodium lactate buffer at pH 5.0 for 30 min at 42°C . Serial dilution and plating was carried out after treatment with abiotic stress and plates were incubated for 48 h at 42°C under aerobic conditions.

Statistical analysis Data were analyzed in STATISTICA 7.0 following the protocols of Gomez and Gomez (1984) using *t*-test method. Critical Difference (CD) values were calculated at *P* level of 0.05%.

Results

Effect of HCN-AMS medium on *Methylobacterium*

strains growth Growth of *Methylobacterium* strains in HCN-AMS medium was compared with growth in normal AMS medium without any modifications. In general, HCN-AMS medium favored a higher growth in all strains (Fig. 1). Increased growth was pronouncedly observed in CBMB27 strain, which recorded an OD value of 1.32 after 84 h incubation (Fig. 1b). Similarly, the strain CBMB110 also showed high OD value of 1.15 after 84 h incubation. However, in spite of marked differences during the 12 - 48 h incubation time, no differences were observed between CBMB35 strains grown in the two media after the 84 h incubation period (Fig. 1c).

Effect of HCN-AMS medium on *Methylobacterium* population

Population of *Methylobacterium* strains in conventional AMS medium and HCN-AMS medium was compared. In general, HCN-AMS medium increased the population in all the strains (Fig. 2). The biggest difference in growth between populations grown in the two media was seen in CBMB 110 with a 4.2% increase at $7.40 \log \text{cfu mL}^{-1}$ compared to CBMB110 grown in AMS medium. This was similarly followed by CBMB 35, CBMB 20, and CBMB 27 at 1.9, 0.9, and 0.4% growth increase in HCN-AMS medium compared to normal AMS medium. Except for that of CBMB 27, all differences were found to

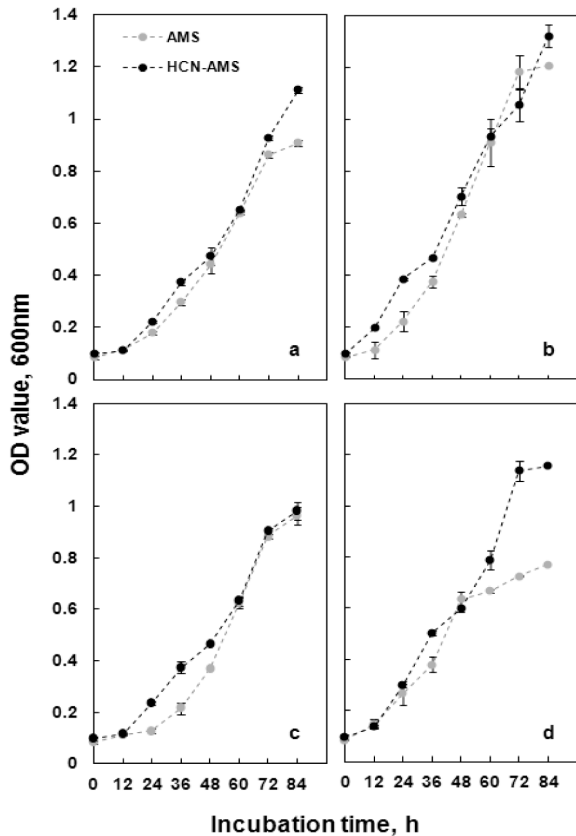


Fig. 1. Growth of *Methylobacterium* strains in AMS medium and HCN-AMS medium maintained at 150 rpm at 30°C. a) CBMB20; b) CBMB27; c) CBMB35; d) CBMB110. Each value represents the mean \pm S.E ($n = 4$).

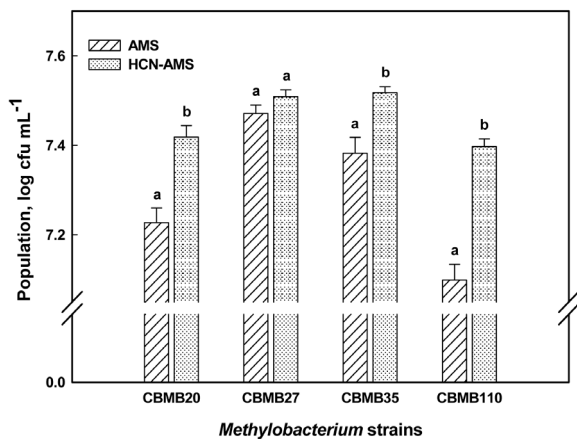


Fig. 2. Comparative population of *Methylobacterium* strains in AMS medium and HCN-AMS medium maintained at 150 rpm at 30°C. Each value represents the mean \pm S.E ($n = 4$). Different letters indicate a significant difference (between growth media) according to t test at $p < 0.05$.

be statistically significant.

Determination of flocculation yield Comparative floc yield of *Methylobacterium* strains in HCN-AMS

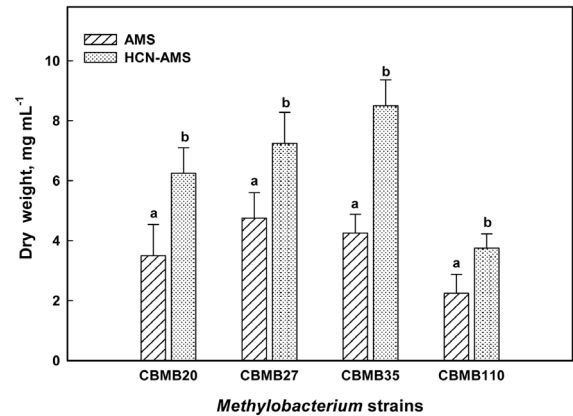


Fig. 3. Comparative flocculation yield of *Methylobacterium* strains in AMS medium and HCN-AMS medium maintained at 150 rpm at 30°C. Each value represents the mean \pm SE ($n = 4$). Different letters indicate significant difference (between growth media) according to t test at $p \leq 0.05$.

medium and AMS medium were studied and the results are presented graphically in Fig. 3. Irrespective of the strain, a marked increase in the floc yield was recorded. Increases of 80.0, 52.1, 93.0, and 65.2% in floc yield was observed in CBMB20, CBMB27, CBMB35, and CBMB110 strains respectively, using HCN-AMS medium. Comparison in floc yield among the *Methylobacterium* strains grown in HCN-AMS medium revealed that CBMB35 produced the highest floc, followed by CBMB27 at 8.5 and 7.3 mg mL⁻¹ dry weight, respectively.

Qualitative determination of EPS production The calcofluor-binding polysaccharides were distributed between the capsular and exopolysaccharide fractions, suggesting their exocellular localization. Calcofluor-white is a special fluorescent stain that binds strongly to structures containing cellulose present in the polysaccharides. All *Methylobacterium* strains were found to be positive for calcofluor as evidenced by the positive fluorescence (Fig. 4). This positive staining provided evidence for the presence of neutral glans in the polysaccharide fraction.

Quantitative EPS production Quantitative EPS production in *Methylobacterium* strains was studied based on a spectrometric assay in AMS medium and HCN-AMS medium. Though all the strains were able to produce EPS, the production efficiency in *Methylobacterium* strains varied considerably. *Methylobacterium* strains CBMB20, CBMB27, CBMB35, and CBMB110 recorded EPS contents of 0.34, 0.23, 0.25, and 0.24 mg mL⁻¹, respectively and

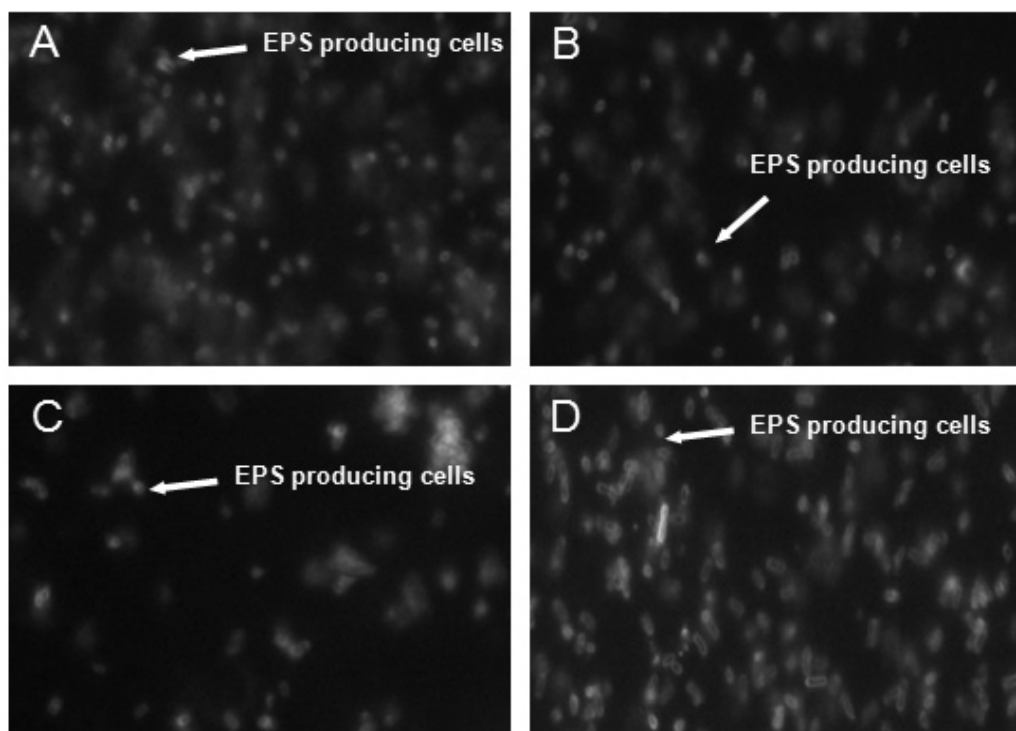


Fig. 4. Micrographs of *Methylobacterium* stains showing positive calcofluor fluorescence. Micrographed with microscope illuminator filter IF550 and DM dichronic mirror. A) CBMB20; B) CBMB27; C) CBMB35; D) CBMB110.

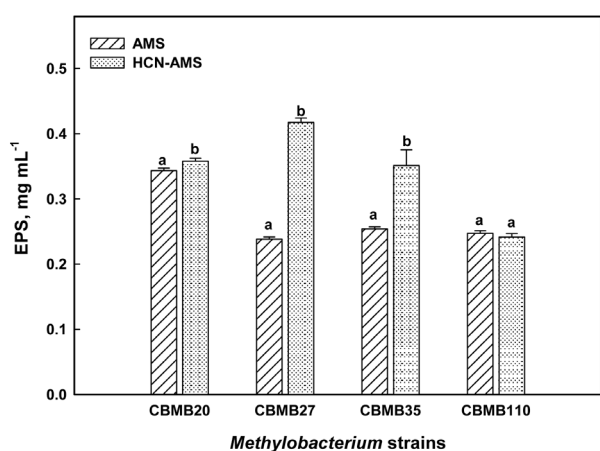


Fig. 5. EPS production of *Methylobacterium* strains grown in AMS medium and HCN-AMS medium maintained at 150 rpm at 30°C. Each value represents the mean \pm S.E ($n = 4$). Different letters indicate significant difference (between growth media) according to *t* test at $p \leq 0.05$.

0.35, 0.41, 0.35, and 0.24 mg mL⁻¹ in HCN-AMS medium (Fig. 5). It is interesting here to note that the EPS production increased by 4.2 to 75% in HCN-AMS medium. The highest EPS production of 0.41 mg mL⁻¹ was recorded in CBMB27 strain in HCN-AMS medium. Except for CBMB 110, increases in EPS production in all strains were statistically significant.

Qualitative PHB production Inclusions are aggregates of various compounds that are normally involved in storing energy reserves or building blocks for the cell. Inclusions accumulate when a cell is grown in the presence of excess nutrients and they are often observed under laboratory conditions. One of the more common storage inclusions is PHB. Phase contrast microscopy was used to detect brightly refractile cytoplasmic inclusions in PHB producing bacteria under axenic conditions. All *Methylobacterium* strains showed well-defined brightly refractile cytoplasmic inclusions under Phase contrast microscopy (Fig. 6), suggesting PHB accumulation by these strains.

Quantitative PHB production Quantitative PHB production in *Methylobacterium* strains was compared using AMS medium and HCN-AMS medium based on spectroscopic assay. All the studied strains were found to be positive for PHB accumulation. *Methylobacterium* strains CBMB20, CBMB27, CBMB35, and CBMB110 recorded a PHB content of 0.56, 1.15, 0.83, and 0.78 mg mL⁻¹ and 0.56, 1.20, 1.13, and 0.87 mg mL⁻¹ in HCN-AMS medium (Fig. 7). PHB production in *Methylobacterium* strains when grown in HCN-AMS medium increased by 3.8, 36.7, and 12.0% in CBMB27, CBMB37, and

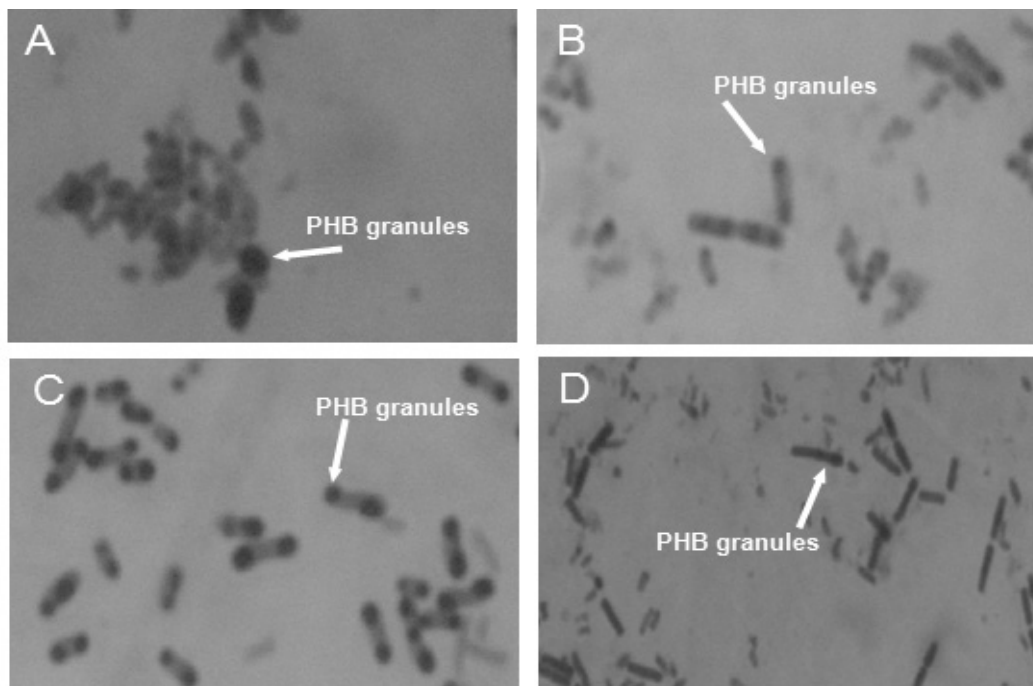


Fig. 6. Micrographs of *Methylobacterium* stains showing PHB accumulation by dark inclusions with sudan black stain. A) CBMB20; B) CBMB27; C) CBMB35; D) CBMB110.

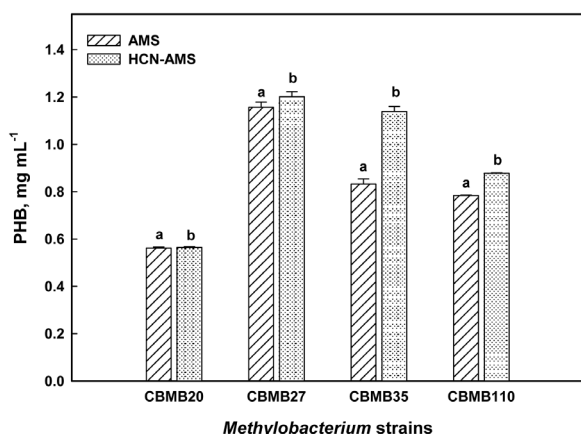


Fig. 7. PHB accumulation in *Methylobacterium* strains grown in AMS and HCN-AMS medium maintained at 150 rpm at 30°C. Each value represents the mean \pm S.E ($n=4$). Different letters after values indicate a significant difference (among growth media) according to t test at $p \leq 0.05$.

CBMB110 strains. The highest PHB accumulation of 1 to 1.20 mg mL⁻¹ was recorded by the strain CBMB27 grown HCN-AMS medium.

Stress endurance efficiency under different created stress conditions

Osmotic stress Survivability of *Methylobacterium* strains grown in HCN-AMS medium and AMS medium

was compared under NaCl stress conditions and the results are presented in Table 2. Bacterial populations decreased with increase in NaCl concentration regardless of *Methylobacterium* strains or the media used. Highest reduction in population was recorded at 250 mM NaCl, at which CBMB20, CBMB27, CBMB35, and CBMB110 populations decreased by 5.3, 3.2, 1.6, and 2.6%, respectively in HCN-AMS medium and 6.0, 3.5, 7.3, and 7.9% in AMS medium. Decrease in populations grown in HCN-AMS medium was comparatively less for strains CBMB27, CBMB35, and CBMB110.

At 200 mM concentration, notable reduction in bacterial population was observed for the strain CBMB110, with 2.8% decrease in HCN-AMS medium compared to 5.4% in AMS medium. Notable differences were also observed for the strains CBMB20, CBMB35, and CBMB110, with 2.3, 3.2, and 3.2% decrease, respectively in HCN-AMS medium and 1.8, 1.7, and 2.7% decrease, respectively in AMS medium at 150 mM NaCl.

Acid stress Survivability of *Methylobacterium* strains grown in HCN-AMS medium was compared with normal AMS medium when subjected to acid stress. The results are presented in Table 3. Acid stress at pH 5.0 caused 3.6, 5.9, 4.2, and 7.7% decrease in population of CBMB20, CBMB27, CBMB35, and CBMB110 in AMS medium and 0.9, 2.4, 1.3, and 4.1% decrease cor-

Table 2. Osmotic stress tolerance among *Methylobacterium* strains grown in AMS medium and HCN-AMS medium.

Treatments	Strains	AMS			HCN-AMS		
		Before stress	After stress	Decrement	Before stress	After stress	Decrement
		---- log cfu mL ⁻¹ ----		%	---- log cfu mL ⁻¹ ----		%
150 mM NaCl	CBMB20	6.07±0.04	5.94±0.04	2.30	6.28±0.03	6.17±0.03	1.83
	CBMB27	5.92±0.06	5.82±0.05	1.72	6.37±0.03	6.28±0.03	1.38
	CBMB35	6.18±0.05	5.99±0.07	3.27	6.33±0.03	6.22±0.03	1.75
	CBMB110	6.24±0.05	6.04±0.07	3.25	6.26±0.02	6.09±0.03	2.73
200 mM NaCl	CBMB20	6.11±0.05	5.94±0.02	2.93	6.32±0.08	6.17±0.02	2.39
	CBMB27	6.11±0.06	5.91±0.03	3.33	6.29±0.02	6.08±0.03	3.58
	CBMB35	6.07±0.05	5.99±0.07	1.25	6.31±0.03	6.22±0.03	1.50
	CBMB110	6.23±0.06	5.91±0.07	5.40	6.18±0.02	6.01±0.03	2.89
250 mM NaCl	CBMB20	5.99±0.03	5.64±0.10	6.04	6.00±0.06	5.69±0.04	5.33
	CBMB27	5.98±0.05	5.78±0.08	3.52	5.99±0.09	5.81±0.08	3.21
	CBMB35	6.11±0.04	5.69±0.05	7.36	6.31±0.3	6.21±0.02	1.68
	CBMB110	5.90±0.04	5.46±0.06	7.94	6.17±0.05	6.01±0.03	2.67

*Each value represents the mean ± S.E ($n = 4$).

Table 3. Acid stress tolerance among *Methylobacterium* strains grown in AMS medium and HCN-AMS medium.

	Strains	AMS			HCN-AMS		
		Before stress	After stress	Decrement	Before stress	After stress	Decrement
		--- log cfu mL ⁻¹ ---		%	--- log cfu mL ⁻¹ ---		%
pH 5.0	CBMB20	5.99±0.03	5.77±0.04	3.69	6.22±0.02	6.16±0.05	0.99
	CBMB27	5.79±0.05	5.46±0.06	5.90	6.25±0.05	6.11±0.07	2.41
	CBMB35	6.07±0.06	5.82±0.09	4.25	5.84±0.03	5.77±0.06	1.34
	CBMB110	5.84±0.04	5.42±0.07	7.72	6.23±0.05	5.98±0.05	4.15

*Each value represents the mean ± S.E ($n = 4$).

respondingly in HCN-AMS medium. Percentage decrease of *Methylobacterium* populations in HCN-AMS medium was likewise, lower when compared to AMS medium.

DISCUSSION

The increase in the world's population, coupled with the limitations in the world's supply of natural resources and widespread degeneration of the environment presents a major challenge to agriculturists. Though chemical fertilizers can meet the nutrient requirements of the plant within a short period, excessive use had caused them to be washed away and contaminate water leading to evaporation in the atmosphere and environmental pollution.

Microbial inoculants, also known as soil inoculants are agricultural amendments that use beneficial microbes (bacteria or fungi) to promote plant health. Microbial

inoculants are applied to improve plant nutrition and can also be used to promote plant growth by stimulating plant hormone production (Bashan and Holguin, 1997; Sullivan et al, 2001). Groups of bacteria, including strains from genera *Azospirillum*, *Azotobacter*, *Bacillus*, *Burkholderia*, *Erwinia*, *Methylobacterium*, *Pseudomonas*, *Rhizobium*, and *Serratia* have gained acceptance as plant growth promoting rhizobacteria (PGPR).

Members of the genus *Methylobacterium* are adaptable in nature and ubiquitous on plant surfaces, with high potential for predominating the phyllosphere (Corpe and Rheem, 1989). *Methylobacterium*, as plant symbionts, utilize the methanol emitted from plants and in turn, impart beneficial effects on plant growth through one or more mechanisms that include production of phytohormones like indoleacetic acid or cytokinins and vitamins (Basile et al., 1985; Koenig et al., 2002;

Trotsenko et al., 2001), synthesis of enzymes such as urease or 1-aminocyclopropane-1-carboxylate deaminase (ACCD) that modulate plant growth (Holland and Polacco, 1992; Madhaiyan et al., 2006, 2007) and production of siderophores (Idris et al., 2004).

Monier and Lindow (2003) reported that on different plant species, large aggregates of bacteria are embedded in extracellular matrix. Further studies by Schauer and Kutschera (2008) reported that leaf associated *Methylobacterium* live in plant surfaces in the form of biofilm like aggregates and suggested the need to further work to support this hypothesis. Aggregation in bacterial strains such as *Azospirillum*, *Azotobacter* and *Pseudomonas* positively affected its dispersal in soil (Madi and Henis, 1989). In this study, we investigated aggregation in *Methylobacterium* strains grown under high carbon concentrations, and the influence of such modification to EPS production, PHB accumulation and stress tolerance efficiency.

Aggregation was studied using *Methylobacterium* strains grown in HCN-AMS medium. The strains CBMB35 and CBMB27 recorded the highest floc yield of 8.5 and 7.25 mg mL⁻¹ dry weight in HCN-AMS medium. Numerous studies have shown that rich media with a low C:N ratio tend to promote a dispersive growth mode, whereas a medium with high C:N ratio tend to aggregate and flocculate the bacterial cells (Burdman et al., 1998; Madi and Henis, 1989; Sadasivan and Neyra, 1985). Furthermore, fructose plays a major role in aggregation by enhancing polysaccharide synthesis (Kaci et al., 2005; Sadasivan and Neyra, 1985) and this polysaccharide induce flocculation by bridging of polymers between the cells (Del Gallo et al., 1989).

All *Methylobacterium* strains were found to be positive for Calcofluor staining as evidenced by the positive fluorescence. Calcofluor-white is a special fluorescent stain that binds strongly to structures containing cellulose present in the polysaccharides (Dell Gallo et al., 1989). The positive staining with Calcofluor reveal the presence of calcofluor-binding polysaccharides distributed between the capsular and exopolysaccharide fractions in the *Methylobacterium* strains.

The total EPS content of *Methylobacterium* strains grown in HCN-AMS medium was analyzed and the results show that the EPS content among the selected plant growth promoting *Methylobacterium* strains varied from 0.24 to 0.34 mg mL⁻¹ in AMS medium and from 0.24 to

0.41 mg mL⁻¹ in HCN-AMS medium. Breuer and Babel (1999) reported the production of 3.86 g L⁻¹ of EPS in *M. rhodesianum* under ammonium limitation conditions. Our results correspond with findings for EPS production under conditions of nitrogen limitation. Data suggesting the involvement of EPS in aggregation of numerous PGPR strains have been published earlier (Alami et al., 2000; Bahat-samet et al., 2004; Burdman et al., 2000). Similar findings could also be observed in our present study in which strains CBMB20, CBMB27, and CBMB35, showing better EPS production also yielded higher flocs.

All *Methylobacterium* strains showed well-defined brightly refractile cytoplasmic inclusions under Phase contrast microscopy suggesting PHB accumulation by these strains. The presence of brightly refractile cytoplasmic inclusions in PHB producing bacteria under axenic conditions and the subsequent confirmation of PHB production as observed in our present study go well with the findings of López-Cortés et al. (2008), who used the presence of bright cytoplasmic inclusions as preliminary step for qualitative PHB determination. Micrographs of *Methylobacterium* stains showed positive for PHB accumulation as evidenced by the dark inclusions with Sudan black stain. The presence of these dark inclusions after sudan black staining may be explained based on non fluorescent lipophilic affinity of the stain towards PHB (Wei et al., 2011).

An increase in PHB accumulation was observed in *Methylobacterium* strains grown in HCN-AMS medium. The high amount of PHB accumulation observed in *Methylobacterium* strains was also recorded by Alvarez et al. (1996) in some psychrophilic and psychrotrophic crude oil-utilizing marine bacteria, which accumulate lipid storage compounds in the cytoplasm under nitrogen-limiting conditions when the C:N ratio becomes high.

Better survivability was observed in *Methylobacterium* strains grown in HCN-AMS medium when subjected to osmotic and acid stress. Though reports regarding the survivability of *Methylobacterium* strains subjected to different stress responses are scarce, we believe that the enhanced survivability of *Methylobacterium* strains may be attributed to the high EPS production and PHB production under increased carbon concentration in the growth medium. The role of high carbon concentration in aggregation of bacterial strains such as *Azospirillum*, *Azotobacter*, and *Pseudomonas* and the concomitant accumulation of high levels of intracellular storage

substances such as polyhydroxyalkanoates (PHA) has been reported by numerous workers (Burdman et al., 1998; Burdman et al., 2000; Kadouri et al., 2003; Madi and Henis, 1989). Results of our present study go well with the findings of Ayub et al. (2004), who correlated high stress tolerance efficiency in *Pseudomonas* sp. 14-3 for thermal and oxidative stresses to the high PHB accumulation by the strain.

Conclusion

In this study, we investigated aggregation in *Methylobacterium* strains grown under high carbon concentrations, and the influence of such modification to EPS production, PHB accumulation and stress tolerance efficiency. Our present study in which strains CBMB20, CBMB27, and CBMB35, which showed better EPS production also yielded higher flocs. An increase in PHB accumulation was observed in *Methylobacterium* strains grown in HCN-AMS medium. Better survivability was observed in *Methylobacterium* strains grown in HCN-AMS medium when subjected to osmotic and acid stress. Though reports regarding the survivability of *Methylobacterium* strains subjected to different stress responses are scarce, we believe that the enhanced survivability of *Methylobacterium* strains may be attributed to the high EPS production and PHB production under increased carbon concentration in the growth medium.

Acknowledgements

This work was partially supported by the Rural Development Administration (RDA), Republic of Korea.

References

- Alami, Y., W. Achouak, C. Marol, and T. Heulin. 2000. Rhizosphere soil aggregation and plant growth promotion of sunflowers by an exopolysaccharide-producing *Rhizobium* sp. strain isolated from sunflower roots. *Appl. Environ. Microbiol.* 66:3393-3398.
- Alvarez, M.I., R.J. Sueldo, and C.A. Barassi. 1996. Effect of *Azospirillum* inoculation on coleoptile growth in wheat seedlings under water stress. *Cereal Res. Commun.* 24:101-107.
- Ayub Akbari, P.J. Swedko, H.D. Clark, W. Hogg, J. Lemelin, P. Magner, L. Moore, and D. Ooi. 2004. Detection of chronic kidney disease with laboratory reporting of estimated glomerular filtration rate and an educational program. *Arch. Intern. Med.* 164(16):1788-1792.
- Bahat-Samet, E., S. Castro-Sowinski, and Y. Okon. 2004. Arabinose content of extracellular polysaccharide plays a role in cell aggregation of *Azospirillum brasilense*. *FEMS Microbiol. Lett.* 237: 195-203.
- Bashan, Y. and G. Holguin. 1997. *Azospirillum* - plant relationships: environment and physiological advances. *Can. J. Microbiol.* 43:103-121.
- Bashan, Y. 1998. Inoculants of plant growth-promoting bacteria for use in agriculture. *Biotechnol. Adv.* 16:729-770.
- Basile, D.V., M.R. Basile, Q.Y. Li, and W.A. Corpe. 1985. Vitamin B12-stimulated growth and development of *Jungmannia leiantha* Grolle and *Gymnocolea inflata* (Huds.) Dum (Hepaticae). *Bryologist.* 88:77-81.
- Breuer, U. and W. Babel. 1999. *Methylobacterium rhodesianum* produces poly-3-hydroxybutyrate and after mutagenesis in addition exopolysaccharides. *Acta Biotechnol.* 19:779-786.
- Burdman, S., E. Jurkevitch, B. Schnartsburd, M. Hampel, and Y. Okon. 1998. Aggregation in *Azospirillum brasilense*: effects of chemical and physical factors and involvement of extracellular components. *Microbiol.* 144:1989-1999.
- Burdman, S., E. Jurkevitch, M.E. Soria-Dia, A.M.G. Serrano, and Y. Okon. 2000. Extracellular polysaccharide composition of *Azospirillum brasilense* and its relation to cell aggregation. *FEMS Microbiol. Lett.* 189:259-264.
- Catroux, G., A. Hartmann, C. Revellin. 2001. Trends in rhizobial inoculant production and use. *Plant Soil* 230:21-30.
- Celik, G.Y., B. Aslim, and Y. Beyatli. 2008. Characterization and production of the exopolysaccharide (EPS) from *Pseudomonas aeruginosa* G1 and *Pseudomonas putida* G12 strains. *Carbohydrate Polymers.* 73:178-182.
- Choi, H.H. 1998. An explicit formula of linear sliding surfaces for a class of uncertain dynamic systems with mismatched uncertainties. *Automatica* 34:1015-1020.
- Corpe, W.A. 1985. A method for detecting methylophilic bacteria on solid surfaces. *J. Microbiol. Methods* 3:215-221.
- Corpe, W.A. and S. Rheem. 1989. Ecology of the methylophilic bacteria on living leaf surfaces. *FEMS Microbiol. Ecol.* 62:243-250.
- Dana, J.R., and L.J. Shimkets. 1993. Regulation of cohesion dependent cell interactions in *Myxococcus xanthus*. *J. Bacteriol.* 175:3636-3647.
- Del Gallo M, M. Negi, and C.A. Neyra. 1989. Calcofluor- and lectin-binding exocellular polysaccharides of *Azospirillum brasilense* and *Azospirillum lipoferum*. *J. Bacteriol.* vol. 171 no. 6:3504-3510.
- Gallego, V., M.T. Garcia, and A. Ventosa, 2006. *Methylobacterium adhaesivum* sp. nov., a methylophilic bacterium isolated from drinking water. *Int. J. Syst. Evol. Microbiol.* 56:339-342.
- Gomez, K.A. and A.A. Gomez. 1984. Statistical procedures for agricultural research, 2nd ed. (Chichester, UK: John Wiley and Sons).
- Green, P. N. 2001. *Methylobacterium*. In *The Prokaryotes*, 3rd edn, release 3.5. Edited by M. Dworkin. New York: Springer.
- Holland M.A. and J.C. Polacco. 1994. PPFMs and other contaminants: is there more to plant physiology than just plant

- Annu. Rev. Plant Physiol. Plant Mol. Biol. 45:197-209.
- Idris, R., R. Trifonova, M. Puschenreiter, W.W. Wenzel, and A. Sessitsch. 2004. Bacterial communities associated with flowering plants of the Ni hyper accumulator *Thaspi goesingense*. Appl. Environ. Microbiol. 70:2667-2677.
- Kaci, Y., A. Heyraud, M. Barakat, and T. Heulin. 2005. Isolation and identification of an EPS producing *Rhizobium* strain from arid soil (Algeria): characterization of its EPS and the effect of inoculation on wheat rhizosphere soil structure. Res. Microbiol. 156:522-531.
- Kadouri, D., E. Jurkevitch, and Y. Okon. 2003. Involvement of the reserve material poly-beta-hydroxybutyrate in *Azospirillum brasilense* stress endurance and root colonization. Appl. Environ. Microbiol. 69:3246-3253.
- Karr, D.B., J.K. Waters and D. W. Emerich. 1983. Analysis of poly-β-hydroxybutyrate in *Rhizobium japonicum* bacteroids by ion-exclusion high-pressure liquid chromatography and UV detection. Appl. Environ. Microbiol. 46, 1339-1344.
- Koenig, R.L., Morris, R.O. and Polacco, J.C. 2002. tRNA is the source of low-level trans-zeatin production in *Methylobacterium* spp.. J. Bacteriol. 184: 1832-1842.
- Knief, C., L. Frances, F. Cantet, and J.A. Vorholt. 2008. Cultivation-independent characterization of *Methylobacterium* populations in the plant phyllosphere by automated ribosomal intergenic spacer analysis. Appl. Environ. Microbiol. 74:2218-2228.
- López-Cortés, A., A. Lanz-Landázuri, and J.Q. García-Maldonado. 2008. Screening and isolation of PHB-producing bacteria in a polluted marine microbial mat. Microb. Ecol. 56:112-120.
- Madhaiyan, M., B.Y. Kim, S. Poonguzhali, S.W. Kwon, M.H. Song, J.H. Ryu, S.J. Go, B.S. Koo, and T.M. Sa. 2007. *Methylobacterium oryzae* sp. nov., an aerobic, pink-pigmented, facultatively, ethylophilic, 1-aminocyclopropane-1-carboxylate deaminase-producing bacterium isolated from rice. Int. J. Syst. Evol. Microbiol. 57:326-331.
- Madhaiyan, M., S. Poonguzhali, V.S. Saravanan, K. Hari, and T.M. Sa. 2006. Influence of pesticides on the growth rate and plant-growth promoting traits of *Gluconacetobacter diazotrophicus*. Pestic. Biochem. Physiol. 84:143-154.
- Madi, L. and Y. Henis. 1989. Aggregation in *Azospirillum brasilense* ed.: Conditions and factors involved in cell-to-cell adhesion. Plant Soil 115:89-98.
- Monier, J.M. and S.E. Lindow. 2003. Differential survival of solitary and aggregated bacterial cells promotes aggregate formation on leaf surfaces. Proc Natl Acad Sci USA. 100(26): 15977-15982.
- Neyra, C.A., L.A. Atkinson, and O. Olubayi. 1995. Coaggregation of *Azospirillum* with other bacteria: basis for functional diversity. In: Fendrik I, Del Gallo M, Vanderleyden J, de Zamaroczy M (eds) *Azospirillum* VI and related microorganisms, genetics physiology ecology. NATO ASI series, series G. Springer. Berlin Heidelberg New York. 429-439.
- Omer, Z.S., R. Tombolini, A. Broberg, and B. Gerhardson. 2004. Indole-3-acetic acid production by pink-pigmented facultative methylotrophic bacteria. Plant Growth Regul. 43:93-96.
- Ramaswamy, S., M. Dworkin, and J. Downard. 1997. Identification and characterization of *Myxococcus xanthus* mutants deficient in calcofluor white binding. J. Bacteriol. 179:2863-2871.
- Reusch, R.N. and H.L. Sadoff. 1983. D-(−) Poly-β-hydroxybutyrate in membranes of genetically competent bacteria. J. Bacteriol. 156:778-788.
- Sadasivan, L. and C.A. Neyra. 1985. Flocculation in *Azospirillum brasilense* and *Azospirillum lipoferum*: exopolysaccharides and cyst formation. J. Bacteriol. 163:716-723.
- Schauer, S. and U. Kutschera. 2008. Methylotrophic bacteria on the surfaces of field-grown sunflower plants: a biogeographic perspective. Theory Biosci. 127:23-29.
- Schauer S., P. Kämpfer, S. Wellner, C. Spröer, and U. Kutschera. 2011. *Methylobacterium marchantiae* sp. nov. a pink-pigmented, facultatively methylotrophic bacterium isolated from the thallus of a liverwort. Int. J. Syst. Evol. Microbiol. 61:870-876.
- Sullivan. B.D., M.R. Dana, and D.A. Sullivan. 2001. Influence of aging on the polar and neutral lipid profiles in human meibomian gland secretions. Invest. Ophthalmol. Vis. Sci. 124(9):1286-1292.
- Trotsenko, Y.A., Ivanova, E.G. and Doronina, N.V. 2001. Aerobic methylotrophic bacteria as phytosymbionts. Mikrobiologiya. 70: 725-736.
- Van Elsas, J.D. and C.E. Heijnen. 1990. Methods for the introduction of bacteria in soil: a review. Biol. Fertil. Soils 10:127-33.
- Wei Y.H, W.C. Chen, C.K. Huang, H.S. Wu, Y.M. Sun, C.W. Lo, and O.M. Janarthanan. 2011. Screening and Evaluation of Polyhydroxybutyrate-Producing Strains from Indigenous Isolate *Cupriavidus taiwanensis* Strains. Int. J. Mol. Sci. 12:252-265.