

# The Predictors and Clinical Impact of Positive Resection Margins on Frozen Section in Gastric Cancer Surgery

Se Yeong Kim, Yoon Sun Hwang, Tae Sung Sohn, Seung Jong Oh, Min Gew Choi,  
Jae Hyung Noh, Jae Moon Bae, and Sung Kim

*Department of Surgery, Samsung Medical Center, Sungkyunkwan University School of Medicine, Seoul, Korea*

**Purpose:** The aim of this study is to compare the characteristics of tumor and prognosis, depending on the status of resection margin involvement, on the frozen section diagnosis in gastric cancer.

**Materials and Methods:** This study was conducted retrospectively, in 83 margin-positive patients on the frozen section diagnosis, who underwent gastrectomy from July 1995 to September 2006. The control group was selected by matching the age, gender, TNM stage and status of adjuvant chemoradiotherapy, among those who had shown clear resection margins. The characteristics of tumor and patient survival are investigated, and they were analyzed between the two groups.

**Results:** The tumor size was significantly larger in the study group than that of the control group ( $P=0.037$ ). There was significant difference between the two groups in location of the tumors ( $P=0.003$ ). Multivariate analysis indicated that only the location and Lauren's classification are independent factors, which affected the resection margin involvement. Median survival was  $41.0 \pm 11.5$  months in the study group and  $93.0 \pm 30.3$  months in the control group ( $P=0.049$ ). In the survival analysis, it was investigated that TNM stage and the resection margin involvement of the frozen section diagnosis were the critical variables.

**Conclusions:** When the tumor is located at the middle or the upper third, or the Lauren's indeterminate type, they are highly likely to show the resection margin involvement on the frozen section diagnosis, and it can, therefore, have negative effects on the prognosis. It is considered as good to perform more extensive resection as possible, during the initial resection.

**Key Words:** Stomach neoplasms; Gastrectomy; Resection margin; Frozen sections

## Introduction

Gastric cancer (GC) is one of the most common cancers in Korea. According to the National Cancer Information Center of Korea, the incidence of GC in 2008 was 56.8 cases per million. Surgical resection is the treatment of choice for GC and curative (R0) resection of the tumor is the principal goal of surgery. This implies

removing the tumor with sufficiently distant proximal and distal margins.

Microscopic resection margin involvement has been reported to affect poor prognosis in GC patients performed with resection.(1-3) Therefore, if the conditions of patient are tolerable and possible for more resection technically, it is recommended to achieve curative resection through a reoperation with more resection. Several studies had reported that the macroscopic and histopathological characteristics of the tumors were associated with the resection margin involvement.(1,4,5) Likewise, the frequency of resection margin involvement on the frozen section diagnosis would be considered as having relation to the specific clinical or histopathological characteristics of the tumors as well.

Generally, when performing gastrectomy to treat GC, a frozen

Correspondence to: Tae Sung Sohn

Department of Surgery, Samsung Medical Center, Sungkyunkwan University School of Medicine, 81, Irwon-ro, Gangnam-gu, Seoul 135-710, Korea

Tel: +82-2-3410-3475, Fax: +82-2-3410-6981

E-mail: [tssohn@skku.edu](mailto:tssohn@skku.edu)

Received February 29, 2012

Revised April 21, 2012

Accepted May 2, 2012

section diagnosis is to be conducted on the resection margins in order to secure clear resection margins. The extent of resection is determined usually depending on tumor's location and gross type (Bormann's classification), and the final surgical procedure is determined depending on the resection margin involvement identified on the frozen section diagnosis. The macroscopic and histopathological characteristics of the tumor are examined through pre-operative esophagogastroduodenoscopy (EGD) and biopsy. When the resection margin involvement-related characteristics are identified among them, it would be helpful for determining the extent of gastrectomy accordingly.

The purpose of this study is to make comparisons of the macroscopic and histopathological characteristics of the tumor as well as the prognosis depending on the resection margin involvement in the patients underwent gastrectomy for GC.

## Materials and Methods

This study was conducted retrospectively in 83 margin-positive patients with GC on the frozen section diagnosis among the patients to whom the curative resection had been performed from July of 1995 to September of 2006 at the Samsung Medical Center.

Age, gender, types of operation and implementations of post-operative adjuvant chemotherapy or radiotherapy were examined by using the medical records and the size, location, macroscopic type, histological classification and the stage of the GC were examined by review of the histopathological findings.

Patients with multiple lesions were excluded on this study, and the size of tumor was measured based on the long axis of lesion. The locations of tumor were divided based on the center of the lesion into three parts of upper third, middle third and lower third. When the lesion was located spanning over two parts or more, such case was described as the diffuse GC. Depending on the location of tumor, the subtotal gastrectomy, proximal gastrectomy or total gastrectomy with D2 lymph node dissection had been performed. And the frozen section diagnosis was performed on the proximal and distal resection margins during operation in all patients. The patient with resection margin involvement on the frozen section diagnosis was performed additional resection during the operation. As the reconstruction, Billroth-I or Billroth-II anastomosis was performed in case of the subtotal gastrectomy while Roux-en-Y anastomosis was performed in case of the total gastrectomy.

After surgery, resection margin status and histopathological characteristics were identified by review of the final histopathologi-

cal diagnosis. The counts of intra-operatively resected lymph nodes and the counts of metastatic lymph nodes had been analyzed, and the final stage of the cancer was operated in accordance with American Joint Committee on Cancer/Union Internationalis Contra Cancrum 7th staging system.(6)

For comparison with the patients who had shown as resection margin involvement on the frozen section diagnosis but achieved curative resection by more resection, the patients to whom curative resection could be achieved without more resection as not showing resection margin involvement on the frozen section diagnosis were selected as the control group. The control group was randomly selected on the patients whose age, gender, TNM stage and the status of adjuvant chemoradiotherapy equal to the patients of the study group among the patients undergone the curative gastrectomy in the same period. Also the clinical and histopathological characteristics were compared between the study group and the control group. And survival rate was analyzed in the two groups.

IBM SPSS ver. 19.0 (IBM, New York, NY, USA) was used for the statistical analysis. The stratified logistic regression analysis for univariate analysis and multivariate stratified logistic regression analysis were employed in the inter-group comparisons of clinical and histopathological characteristics. Kaplan-Meier survival analysis and stratified Cox regression analysis were used to calculate the survival functions. The P-value less than 0.05 was considered to indicate statistical significance.

## Results

The mean age of 83 patients achieved curative resection with more resection as being identified as resection margin involvement on the frozen section diagnosis was 54.6 years old for 55 male patients (66.3%) and 28 female patients (33.7%). Mean follow up period was 50.9 months. The comparisons were made on the clinical and histopathological characteristics between two groups (Table 1).

The size of tumor was significantly larger in the study group than in the control group ( $7.7 \pm 4.4$  cm vs.  $5.8 \pm 3.0$  cm;  $P=0.037$ ). The patients of the study group had more number of tumors positioned at the lower third (55.4%), in contrast that the patients of the control group had more number of tumors positioned at the middle third (48.2%), presenting significant difference ( $P=0.003$ ). Accordingly, the largest proportion of patients performed with the total gastrectomy was 79.5% in the margin-positive patients on the frozen section diagnosis. Whereas the largest proportion of patients performed with the subtotal gastrectomy was 62.7% in the margin-

Table 1. Comparison of demographic and pathologic data

Variables	RM status on frozen section		P-value*	Variables	RM status on frozen section		P-value*
	Positive (n=83)	Negative (n=83)			Positive (n=83)	Negative (n=83)	
Age	54.6±13.0	54.9±12.7	0.875	Lauren			0.021
Sex			1.000	Intestinal	17 (20.5)	29 (34.9)	
Male	55 (66.3)	55 (66.3)		Diffuse	50 (60.2)	49 (59.0)	
Female	28 (33.7)	28 (33.7)		Mixed	2 (2.4)	3 (3.6)	
Tumor size (cm)	7.7±4.4	5.8±3.0	0.037	Indeterminate	14 (16.9)	2 (2.4)	
Tumor location			0.003	TNM stage			1.000
Diffuse	5 (6.0)	2 (2.4)		IA	14 (16.9)	14 (16.9)	
Upper	15 (18.1)	11 (13.3)		IB	4 (4.8)	4 (4.8)	
Middle	46 (55.4)	30 (36.1)		IIA	12 (14.5)	12 (14.5)	
Lower	17 (20.5)	40 (48.2)		IIB	11 (13.3)	11 (13.3)	
Surgical procedure			0.000	IIIA	7 (8.4)	7 (8.4)	
DG	15 (18.1)	52 (62.7)		IIIB	17 (20.5)	17 (20.5)	
PG	2 (2.4)	1 (1.2)		IIIC	18 (21.7)	18 (21.7)	
TG	66 (79.5)	30 (36.1)		CTx			0.875
Retrieved lymph nodes	41.2±15.9	40.0±21.4	0.868	Yes	36 (43.4)	48 (57.8)	
Gross type			0.499	No	47 (56.6)	35 (42.2)	
EGC	19	19		RTx			0.855
AGC	64	64		Yes	20 (24.1)	19 (22.9)	
B-I	2 (3.1)	1 (1.6)		No	63 (75.9)	64 (77.1)	
B-II	6 (9.4)	11 (17.2)		PRM (cm)	4.4±4.2	4.4±3.0	0.976
B-III	33 (51.6)	38 (59.4)		DRM (cm)	6.2±5.3	5.2±4.0	0.167
B-IV	22 (34.4)	13 (20.3)					
B-V	1 (1.6)	1 (1.6)					
Histology							
Well-differentiated	2 (2.4)	5 (6.0)					
Moderately differentiated	13 (15.7)	25 (30.1)					
Poorly differentiated	39 (45.8)	27 (32.5)					
Signet ring cell	28 (33.7)	25 (30.1)					
Mucinous	1 (1.2)	1 (1.2)					
Papillary	1 (1.2)	0					

Values are presented as mean±standard deviation or n (%). RM = resection margin; DG = distal gastrectomy; PG = proximal gastrectomy; TG = total gastrectomy; EGC = early gastric cancer; AGC = advanced gastric cancer; CTx = adjuvant chemotherapy; RTx = adjuvant radiotherapy; PRM = proximal resection margin; DRM = distal resection margin. \*P-value<0.05 at stratified logistic regression analysis.

negative patients, presenting there were significant differences between two groups ( $P < 0.001$ ). All patients had undergone the gastrectomy with D2 lymph node dissection, and there was no inter-group difference in the counts of resected lymph nodes ( $P = 0.868$ ).

On macroscopic characteristics according to Bormann's classification, most of the lesions were in type-III and type-IV in both groups, but there was no inter-group difference ( $P = 0.499$ ). According to the World Health Organization histological classification, the patients of the study group had more of poorly differentiated type

and signet ring cell type but there was no inter-group difference ( $P = 0.126$ ). Also on Lauren's classification, the most population in both groups was the diffuse type, yet the patients of the study group had less number of intestinal type tumors showing significant inter-group difference (20.5% vs. 34.9%;  $P = 0.021$ ). The distance of final proximal and distal resection margins had no inter-group difference ( $P = 0.976$ ,  $P = 0.167$ ).

The results of the multivariate analysis, it only showed the location and Lauren's classification were the independent factors con-

**Table 2. Stratified logistic regression results of clinicopathological features in patients**

Variables	B	SE	Wald	df	Sig.*	Exp (B)	95% CI for Exp (B)	
							Lower	Upper
Tumor size (cm)			4.824	2	0.090			
5~10/≤5	-0.217	0.412	0.277	1	0.598	0.805	0.359	1.804
10~15/≤5	1.046	0.602	3.020	1	0.082	2.846	0.875	9.262
Tumor location			10.786	3	0.013			
Diffuse/Lower	0.939	1.050	0.801	1	0.371	2.558	0.327	20.008
Upper/Lower	1.493	0.553	7.292	1	0.007	4.450	1.506	13.152
Middle/Lower	1.265	0.429	8.678	1	0.003	3.542	1.527	8.217
Lauren's classification			8.449	3	0.038			
Diffuse/Intestinal	0.293	0.389	0.569	1	0.451	1.341	0.626	2.871
Mixed/Intestinal	0.018	1.016	0.000	1	0.986	1.019	0.139	7.462
Indeterminate/Intestinal	2.429	0.841	8.347	1	0.004	11.344	2.184	58.927

B = the coefficient for the constant; SE = standard error; df = degree of freedom; Sig. = significance; Exp (B) = exponentiation of the B coefficient; CI = confidence interval. \*Sig.<0.05.

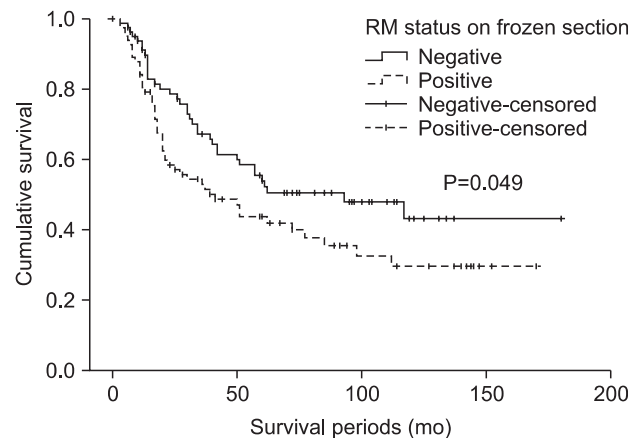
tributing to the resection margin involvement on the frozen section diagnosis (Table 2).

We performed the survival analysis, and showed the Kaplan-Meier survival curves with significant difference in both groups ( $P=0.049$ ) (Fig. 1). The 5-years survival rates were 43.7% in study group and 53.9% in control group. The median survivals of each group were  $41.0 \pm 11.5$  months and  $93.0 \pm 30.3$  months, showing it was shorter in the study group. When the variables had been calculated through the stratified Cox regression analysis, it was examined that the TNM stage and resection margin status on the frozen section were identified as the key variables affecting the patient survival (Table 3).

## Discussion

### 1. Determination of the extent of gastric resection

The extent of resection for curative gastrectomy is determined by the location and the size of lesion as well as by the distance of resection margins.(7,8) Even though there is no definitely established rule for the distance of resection margins, the treatment guidelines provided by the Japanese Gastric Cancer Association (JGCA) recommend to secure the distance  $\geq 2$  cm for T1 tumor,  $\geq 3$  cm for T2 or more deep tumor with expansive growth pattern and  $\geq 5$  cm for tumor with infiltrative growth pattern.(9) In determining the extent of resection according to these guidelines, usually there will be no objection to the extent of resection for the tumor located at upper third or lower third of stomach, but the extent of



**Fig. 1.** Cumulative survival curves according to the resection margin status on frozen section. RM = resection margin.

resection for the middle third tumor is controversial. Clark et al.(7) argues the total gastrectomy is required as the curative standard therapy for the GC located at the middle third, but other studies argue the subtotal gastrectomy is sufficient enough in consideration of post-operative complications or the quality of life because the extent of gastric resection and the distance of proximal resection margins do not have any effects on the long-term survival in contrast.(10,11) The surgeons in this study had determined the extent of resection by securing resection margins being recommended by the treatment guidelines provided by the JGCA depending on the results of pre-operative EGD and the computed tomography as well as the intra-operative gross findings.

**Table 3. Multivariate analysis of prognostic factors for survival**

Variables	Odds ratio	95% CI	P-value*
Tumor size (cm)			0.309
5~10/≤5	0.870	0.426~1.778	0.703
10~15/≤5	1.599	0.588~4.347	0.358
Tumor location			0.743
Diffuse/Lower	1.865	0.531~6.545	0.331
Upper/Lower	1.521	0.470~4.928	0.484
Middle/Lower	1.339	0.375~4.773	0.653
Gross types			0.186
B-I	0.470	0.016~13.454	0.659
B-II	1.159	0.190~7.057	0.873
B-III	3.017	0.569~16.006	0.195
B-IV	2.716	0.480~15.378	0.259
B-V	8.191	0.489~137.131	0.144
Histology			0.503
MD/WD	3.312	0.194~56.580	0.408
PD/WD	3.513	0.194~63.559	0.395
SRC/WD	5.071	0.274~93.809	0.275
Others/WD	7.820	0.366~167.156	0.188
Lauren's classification			0.660
Diffuse/Intestinal	0.867	0.242~3.109	0.827
Mixed/Intestinal	1.868	0.389~8.966	0.435
Indeterminate/Intestinal	0.566	0.142~2.265	0.421
TNM stage			0.000
IB	2.720	0.246~30.081	0.414
IIA	5.265	1.094~25.349	0.038
IIB	11.589	2.591~51.832	0.001
IIIA	15.842	3.402~73.774	0.000
IIIB	25.439	5.963~108.532	0.000
IIIC	50.036	11.726~213.513	0.000
RM status on frozen section			
Positive	1.939	1.249~3.011	0.003

Values are presented as number or range. CI = confidence interval; B = Borrmann type; MD = moderate differentiated; WD = well differentiated; PD = poorly differentiated; SRC = signet ring cell; RM = resection margin. \*P-value<0.05 at stratified Cox regression analysis.

## 2. Prognosis of patient identified with resection margin involvement on the frozen section diagnosis

The resection margin involvement after gastric surgery for GC has been known to act as the independent factor having negative effects on the prognosis.(3,4,8,12,13) Cascinu et al.(14) had reported that the resection margin involvement in the patient with N0 stage

disease had effects on poor prognosis therefore reoperation was required, whereas in the patient being identified with metastatic lymph nodes would not have any prognostic differences caused by the resection margin involvement, it was possible to have close observation. Another similar study also had reported that the resection margin involvement was identified as independent factor having effects on poor prognosis only in the patients with ≤5 positive lymph nodes so that the survival had been affected more by the extent of lymph node metastases rather than the status of resection margin involvement.(15) But according to the recent studies, it was reported that the resection margin involvement had negative effects on the prognosis with no relation with lymph node metastases, being opened to dispute.(3,13)

Generally, a frozen section diagnosis of the resection margins is being performed during the surgery for GC to secure a clear resection margin. And through such diagnosis, if necessary, more resections are to be performed on margins during the surgery to achieve curative resection as possible as it can be. It should be noted that all of previous studies were performed in the patients identified with resection margin involvement from the results of the final histopathological diagnosis. This study is the first one conducted comparative analysis of the characteristics and the prognosis of patient in those who had achieved curative resection through having more resections among the patients with resection margin involvement on the frozen section diagnosis.

In this study, the patient who had achieved curative resection through more resection as identified with resection margin involvement on the frozen section diagnosis had shown comparatively lower survival rate than those with negative margins. Nevertheless, according to the results of multivariate analysis, not only the TNM stage but also the resection margin status on the frozen section diagnosis was identified as factors affecting the survival. This result can be deemed that the resection margin involvement on the frozen section diagnosis was also likely to affect the survival likewise the resection margin status was identified as an independent factor with effects on the survival from previous studies performed in patients with microscopic residual disease determined by the final residual tumor status.

It is still unclear as far as the mechanism is concerned for how the resection margin involvement on the frozen section could have negative effects on the survival at the initial resection. When compared the distance from the lesion to the resection margins, there was no significant inter-group difference in both of proximal and distal resection margins, so that it could not be considered as the

survival-affective factor (Proximal  $4.4 \pm 4.2$  cm vs.  $4.4 \pm 3.0$  cm,  $P=0.976$ ; Distal  $6.2 \pm 5.3$  cm vs.  $5.2 \pm 4.0$  cm,  $P=0.167$ ). The curative resection of tumor should be done with en-bloc resection of primary cancer ensuring there would be no microscopic or macroscopic residual tumor in principal. Although, there was no discussion on the patterns of recurrence in the patients, but it is presumable that those exposed tumor cells were exfoliated into abdominal cavity at the initial resection and affected the survival of margin-positive patients on the frozen section.

### 3. Characteristics of tumors with high prevalence of resection margin involvement

There are several studies concerning the patient prognosis and needs of additional treatments depending on the resection margin status after gastrectomy for GC. In these studies, reports are made that macroscopic Borrmann type III and IV, tumor size, tumor and nodal stage, tumor location, and histologically undifferentiated tumors are associated with resection margin involvement.(1,3,5) Since it is universalized to use the frozen section diagnosis in order to determine the extent of resection during gastrectomy, it can be applied to the tumors with resection margin involvement on the frozen section diagnosis in order to identify their clinical and histopathological characteristics. In this study, the status of resection margin involvement had shown differences according to the size, location of tumors and Lauren's classification, presenting similar results to the previous studies conducted in the patients with the resection margin involvement on the final diagnosis. It is considered that mid-third or upper-third location of the tumor and Lauren's indeterminate histological type are predominant risk factors of resection margin involvement on the frozen section diagnosis.

This study has some limitations, due to the relatively small subject patients and the method of retrospective selection for the control group among those being performed with surgery in the same period. But the comparability was strengthened through random selections by matching age, gender, TNM stage of the patients and the status of adjuvant chemoradiotherapy.

In curative resection for GC, when the tumor was identified as located at mid-third or upper-third and in the case applicable to Lauren's indeterminate histological type, they are highly likely to show the resection margin involvement on the frozen section diagnosis and it can have negative effects on the prognosis. Therefore, it is considered that for tumors with these characteristics, it would be better to achieve en-bloc resection through more extensive resection than routine distance.

## References

1. Songun I, Bonenkamp JJ, Hermans J, van Krieken JH, van de Velde CJ. Prognostic value of resection-line involvement in patients undergoing curative resections for gastric cancer. *Eur J Cancer* 1996;32A:433-437.
2. Hallissey MT, Jewkes AJ, Dunn JA, Ward L, Fielding JW. Resection-line involvement in gastric cancer: a continuing problem. *Br J Surg* 1993;80:1418-1420.
3. Morgagni P, Garcea D, Marrelli D, De Manzoni G, Natalini G, Kurihara H, et al. Resection line involvement after gastric cancer surgery: clinical outcome in nonsurgically retreated patients. *World J Surg* 2008;32:2661-2667.
4. Cho BC, Jeung HC, Choi HJ, Rha SY, Hyung WJ, Cheong JH, et al. Prognostic impact of resection margin involvement after extended (D2/D3) gastrectomy for advanced gastric cancer: a 15-year experience at a single institute. *J Surg Oncol* 2007;95:461-468.
5. Fujimoto S, Takahashi M, Mutou T, Kobayashi K, Toyosawa T, Ohkubo H. Clinicopathologic characteristics of gastric cancer patients with cancer infiltration at surgical margin at gastrectomy. *Anticancer Res* 1997;17:689-694.
6. Washington K. 7th edition of the AJCC cancer staging manual: stomach. *Ann Surg Oncol* 2010;17:3077-3079.
7. Clark CJ, Thirlby RC, Picozzi V Jr, Schembre DB, Cummings FP, Lin E. Current problems in surgery: gastric cancer. *Curr Probl Surg* 2006;43:566-670.
8. Dicken BJ, Bigam DL, Cass C, Mackey JR, Joy AA, Hamilton SM. Gastric adenocarcinoma: review and considerations for future directions. *Ann Surg* 2005;241:27-39.
9. Japanese Gastric Cancer Association. Japanese gastric cancer treatment guidelines 2010 (ver. 3). *Gastric Cancer* 2011;14:113-123.
10. Jang YJ, Park MS, Kim JH, Park SS, Park SH, Kim SJ, et al. Advanced gastric cancer in the middle one-third of the stomach: should surgeons perform total gastrectomy? *J Surg Oncol* 2010;101:451-456.
11. Lee JH, Kim YI. Which is the optimal extent of resection in middle third gastric cancer between total gastrectomy and subtotal gastrectomy? *J Gastric Cancer* 2010;10:226-233.
12. Cunningham SC, Kamangar F, Kim MP, Hammoud S, Haque R, Maitra A, et al. Survival after gastric adenocarcinoma resection: eighteen-year experience at a single institution. *J Gastrointest Surg* 2005;9:718-725.

13. Wang SY, Yeh CN, Lee HL, Liu YY, Chao TC, Hwang TL, et al. Clinical impact of positive surgical margin status on gastric cancer patients undergoing gastrectomy. *Ann Surg Oncol* 2009;16:2738-2743.
14. Cascinu S, Giordani P, Catalano V, Agostinelli R, Catalano G. Resection-line involvement in gastric cancer patients undergoing curative resections: implications for clinical management. *Jpn J Clin Oncol* 1999;29:291-293.
15. Kim SH, Karpeh MS, Klimstra DS, Leung D, Brennan MF. Effect of microscopic resection line disease on gastric cancer survival. *J Gastrointest Surg* 1999;3:24-33.