

RESEARCH COMMUNICATION

Radiosensitivity Enhancement by Arsenic Trioxide in Conjunction with Hyperthermia in the EC-1 Esophageal Carcinoma Cell Line

Yan-Hui Cui^{1&}, Hai-Jun Liang^{2&}, Qing-Qin Zhang^{1&}, Si-Qing Li³, Xiao-Rui Li¹, Xiao-Qing Huo¹, Qing-Hui Yang¹, Wei-Wei Li¹, Jian-Fa Gu⁴, Qin-Liang Hua¹, Ping Lu^{1*}, Zhan-Hui Miao^{1*}

Abstract

Objective: To explore the effect on radiosensitivity of arsenic trioxide (As_2O_3) in conjunction with hyperthermia on the esophageal carcinoma EC-1 cell line. **Method:** Inhibition of EC-1 cell proliferation at different concentrations of As_2O_3 was assessed using the methyl thiazolyl blue colorimetric method (MTT method), with calculation of IC_{50} value and choice of 20% of the IC_{50} as the experimental drug concentration. Blank control, As_2O_3 , hyperthermia, radiotherapy group, As_2O_3 + hyperthermia, As_2O_3 + radiotherapy, hyperthermia + radiotherapy and As_2O_3 + hyperthermia + radiotherapy groups were established, and the cell survival fraction (SF) was calculated from flat panel colony forming analysis, and fitted by the 'multitarget click mathematical model'. Flow cytometry (FCM) was used to detect changes in cell apoptosis and the cell cycle. **Results:** As_2O_3 exerted inhibitory effects on proliferation of esophageal carcinoma EC-1 cells, with an IC_{50} of 18.7 μ mol/L. After joint therapy of As_2O_3 + hyperthermia + radiotherapy, the results of FCM showed that cells could be arrested in the G_2/M phase, and as the ratio of cells in G_0/G_1 and S phases decreased, cell death became more pronounced. **Conclusion:** As_2O_3 and hyperthermia exert radiosensitivity effects on esophageal carcinoma EC-1 cells, with synergy in combination. Mechanistically, As_2O_3 and hyperthermia mainly influence the cell cycle distribution of EC-1 esophageal carcinoma cells, decreasing the repair of sublethal damage and inducing apoptosis, thereby enhancing the killing effects of radioactive rays.

Keywords: As_2O_3 - hyperthermia - radiosensitivity - EC-1 cell line

Asian Pacific J Cancer Prev, 13, 1693-1697

Introduction

In Chinese traditional medicine, As_2O_3 is the effective component of arsenic. The initial study showed that acute promyelocytic leukaemia (APL), which induced by As_2O_3 can be differentiated into mature granulocyte, and the clinical remission rate can reach 70% or even above. But due to the high toxicity, it is difficult to reach the effective blood concentration in solid tumor chemotherapy. So, searching for the low dose As_2O_3 which has a radiosensitivity effect to solid tumor has become the focus of the recent study. Many studies verified that As_2O_3 can significantly inhibit the proliferation of solid tumor cells, such as nasopharyngeal carcinoma (Xie et al., 2004), cervical carcinoma (Guo et al., 2007), ovarian carcinoma (Zhang et al., 2003), fibrosarcoma (Wang et al., 2006), malignant glioma (Ning and Knox, 2006), lymphoma (Nie et al., 2005), induce the tumor cells to be arrested in G_2/M phase in which the cells are sensitive to

radioactive ray, and increase the apoptosis to implement the sensitization (Zhang et al., 2003; Guo et al., 2007). At the aspect of esophageal carcinoma, the related report is relatively less.

Hyperthermia is a treatment modality which makes the temperature of tumor tissue up to 40 °C- 44 °C by heating and induces inhibition or apoptosis of tumor cells. In addition to the direct cytotoxicity to tumor cells, hyperthermia has the effect of radiosensitivity, chemosensitivity, inhibiting the tumor metastasis, promoting the immunity of the organism (Liu et al., 2005; Ye, 2005; Chen et al., 2008; Cui et al., 2008; Sun and Wang, 2008; Zhan et al., 2008; Guo et al., 2011). This study investigates the radiosensitivity of As_2O_3 combined with thermotherapy on esophageal carcinoma EC-1 cell line, discuss the possible mechanism, and provide experiment evidence for effect of the combination of As_2O_3 , hyperthermia and radiotherapy on esophageal carcinoma.

¹Oncology Department, ²Infectious Disease I Department, ³Tuberculosis Department, the First Affiliated Hospital of Xinxiang Medical College, Weihui, ⁴The Fourth People Hospital of Zhengzhou, Zhengzhou, China [&]Equal contributors *For correspondence: liupingmed@126.com

Materials and Methods

Cells and main reagent

Human esophageal carcinoma EC-1 cells were provided by Tumor Reverse Transcription Molecular Biology Laboratory, Xinxiang Medical College, As₂O₃ (10 mg/vial) was purchased from Beijing Shuanglu Pharmaceutical Co., Ltd.

Experiment Groups

Eight groups are included, which are blank control group (O group), As₂O₃ group (A group), hyperthermia group (H group), As₂O₃ + hyperthermia group (AH group), radiotherapy group (R group), As₂O₃ + radiotherapy group (AR group), hyperthermia + radiotherapy group (AH group), As₂O₃ + hyperthermia + radiotherapy group (AHR group).

Cell Culture

EC-1 cells are cultured in RPMI 1640 medium with 10% foetal bovine serum (FBS), 100 µg/mL penicillin and 100 µg/mL streptomycin in constant temperature incubator at 37 °C, 5% CO₂. The cells used to all the experiments are at logarithmic growth phase.

Drug Sensitivity Test (MMT method)

The experiment is divided into 9 groups according to the concentration of As₂O₃, in which the blank control group is 0 µmol/L, the other groups are 64 µmol/L, 32 µmol/L, 16 µmol/L, 8 µmol/L, 4 µmol/L, 2 µmol/L, 1 µmol/L and 0.5 µmol/L, respectively. Monolayer culture cells are digested with 0.25 % trypsin, then dilute into single cell suspension with RPMI 1640 medium containing 10% bovine serum, seed in cell culture flask with 96 hole and 6×10³ cells in each hole, the volume of each hole is 100 µl. The cell culture flask is transferred into CO₂ incubator at 37 °C, 5% CO₂ and saturated humidity. The cells proliferate adhesively after 12 hours; add above As₂O₃ solutions for continued culture.

After the cell culture flask is observed at 24h, 48h, 72h, it is taken out and 20 µl MMT solution (5 mg/ml) is added into each hole. Stop culture after another 4 hours at 37 °C. The supernate in holes is absorbed cautiously and discarded. Inject 150 µl dimethyl sulfoxide (DMSO) into each hole, shock for 10 minutes to dissolve the crystals fully in shock mixer under ambient temperatures. Open enzyme linked immunosorbent monitor, adjust the wavelength to 492 nm after monitor self-inspection for 10 minutes, test the light absorption value (A) for each hole and record the results. Test is repeated 3 times, take average value.

Inhibition ratio (%) = 1-(average OD value of each group) OD value of control group)×100%

The drug-cell inhibition curve is obtained by taking the concentration of drug as the abscissa axis, inhibition ratio of drug as vertical axis. Then IC₅₀ can be calculated according to the curve.

The determination of cell radiosensitivity

A group, AH group, AR group, AHR group are dealt with As₂O₃ solutions whose concentration is 20% of IC₅₀

(about 3 µmol/l). Add 3µl As₂O₃ mother solution (5 mmol/L) to petri dish of A group, AH group, AR group, AHR group. Seal the petri dish and put them to constant incubator at 43 °C for 30 minutes, thermal equilibrium for 5 minutes. The conditions of irradiation are room temperature, electron linear accelerator with 6 MVX irradiation, and dosage rate is 200c Gy/min, the absorbed dosages are respectively 0 Gy, 1 Gy, 2Gy, 4Gy, 6Gy, 8Gy. After sterile culture for 14 days, the colony (≥50 cells) numbers are counted under a microscope. Each group set 6 parallel petri dishes, repeat 3 times, calculate the average value. SF is obtained according to the following equation: SF = colony forming numbers of AHR group/ (numbers of inoculation cells × colony forming numbers of without irradiation) × 100.

The cell survival curve is obtained by taking the irradiation dosage as the abscissa axis, SF as vertical axis. Do, Dq, N can be calculated according to the curve. Then calculate the sensitization enhancement ratio (SER) according to the following equation: SER = Do value of R group/Do value of AHR group.

The determination of cell cycle and apoptosis

Select EC-1 cells at logarithmic growth phase, adjust the cell concentration to 1×10⁵/ml, then inoculate into 6 hole culture plate with 3 ml per plate. Take different treatment after 12 hours: Blank control group (O group), As₂O₃ group (A group), hyperthermia group (H group), As₂O₃ + hyperthermia group (AH group), radiotherapy group (R group), As₂O₃ + radiotherapy group (AR group), hyperthermia + radiotherapy group (HR group), As₂O₃ + hyperthermia + radiotherapy group (AHR group). Transfer 3 µmol/l of As₂O₃ solutions to A group, AH group, AR group, AHR group. Heat the H group, AH group, HR group, AHR group at 43 °C for 30 minutes. After 24 hours, take radiotherapy with 2 Gy of irradiation dosage and 200c Gy/min of dosage rate.

After that, continue to culture at 5% CO₂ incubator at 37 °C for 48 hours. Centrifuge after trypsinization, made into single cell suspension. PBS solution at 4 °C is used to suspend cells, centrifuge for 3 minutes at 1000 pr/4°C, discard the supernatant. Then cells are suspended under ice bath by buffer solution supplied by 1 ml of kit, filter the cells with 400 mesh filter membrane. Add 5 µl of Annexin V, 2.5 µl of PI solution to 100 µl of cell suspension, well mixing. Incubate the suspension in cassette for 10 minutes under ice bath, then transfer 150 µl of buffer solution into the suspension. Test the DNA content at 488 nm by flow cytometry standard program. For each sample, the cumulative number is not less than 1×10⁴. The immunofluorescence data is analyzed by Exppo 32ADC, and, the DNA cell cycle fitting analysis is done by Multicycle AV software. Collect EC-1 cells of each group, wash cells for 2 times with PBS buffer solution, adjust cell concentration to 1×10⁶/ml, add 1ml PI dye liquor, analyze the cell apoptosis ratio by single histogram statistic software.

Statistical Analysis

These research adopt t test (mean comparison in 2 samples) and single factor variance analysis (mean

Table 1. Deviation of As₂O₃ Inhibition Effect to EC-1 cells Proliferation in Different Time

Concentration (μmol/l)	Inhibition ratio (%)		
	24h	48h	72h
0.5	2.00±1.10	3.35±3.31	5.01±8.41
1	7.66±1.02	8.17±2.51*	11.9±8.15
2	12.8±0.68	13.3±3.27*	16.9±11.7*
4	25.0±1.18*	27.1±9.73*	33.4±11.4*
8	29.1±1.26	36.6±4.96*#	50.8±12.4*#
16	30.3±1.43	47.8±4.70*#	66.7±6.78*
32	37.6±1.05	56.9±6.49*#	74.8±8.37*#
64	47.8±0.85*	71.2±4.01*#	80.3±8.80*#

Note: *comparison of the concentration with the former at same time p<0.05; #comparison of the time with the former with same concentration p<0.05

Table 2. The Main Parameter of Cell SF Curve after Irradiation

Group	Ser (Dq)	D ₀ (Gy)	Dq (Gy)	N	SER(D ₀)	SER(Dq)
R Group	2.193	0.462	1.625	-	-	-
HR Group	2.07	0.241	1.308	1.059	1.917	1.917
AR Group	1.706	0.133	1.196	1.285	3.474	3.474
AHR Group	1.272	0.042	1.079	1.724	11	11

Note: -represents contol group

Table 3. The Test Results for Apoptosis after Different Treatment (% , c± S)

Treatment	Apoptosis ratio (%)	Treatment	Apoptosis ratio (%)
O Group	0.72 ±0.026	R Group	1.13±0.128
H Group	0.78±0.026*	H+R Group	2.7±0.170*
A Group	1.94±0.05*	A+R Group	3.36±0.011*
H+A Group	2.58±0.191*	A+H + R Group	3.52±0.147*

Note: *represents that P value <0.05 compared to other groups comparison in multiple samples) using SPSS 17.0, experiment data are indicated by mean ± standard deviation (χ±S), a=0.05 was the level of test.

Results

MMT method test the inhibition effect of As₂O₃ to EC-1 cells proliferation

MMT method test the inhibition effect of As₂O₃ with different concentration (64, 32, 16, 8, 4, 2, 1, 0.5 μmol/l) to esophageal carcinoma EC-1 cells proliferation (Table 1) after 24h, 48h and 72h of addition of As₂O₃, the results (Figure 1) show that the inhibition is enhanced with increase of concentration and extension of time. That is, As₂O₃ can inhibit the cell growth depending on concentration and time, dosage-effect and time-effect relation can be got.

Take the concentration of As₂O₃ as the abscissa axis, inhibition ratio of As₂O₃ as vertical axis, plot curve (Figure 2) using EXCEL. Calculate IC₅₀ according to the curve. The relation between inhibition ratio and concentration of As₂O₃ shows gradient change, and IC₅₀ of 48 hours is 18.74 μmol/l. From the figure, IC₅₀ is about 19 μmol/l. It meets the above result calculated by equation.

Flat Panel Colony Forming Test Radiosensitivity of cells

In order to study the effect of As₂O₃ + hyperthermia

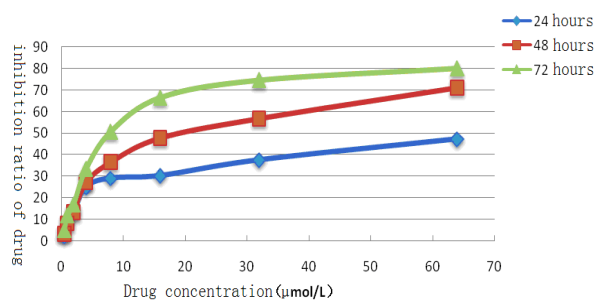


Figure 1. The Inhibition Ratio of As₂O₃ on the Esophageal Cancer Cell Line EC-1

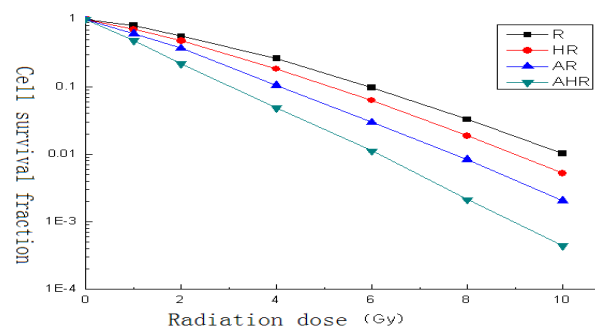


Figure 2. Human Esophageal Carcinoma EC-1 Cells SF Curve

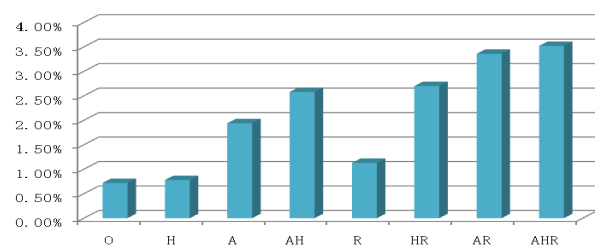


Figure 3. Histogram for Different Treatment Groups of Cells Apoptosis Changes

+ radiotherapy to human esophageal carcinoma EC-1 cells, take 3 μmol/l of As₂O₃, which is 20% of IC₅₀, as the experiment concentration. Put in constant incubator at 43 °C for 30 minutes for hyperthermia, then take radiotherapy. Test respectively the effect of As₂O₃ + hyperthermia + radiotherapy and As₂O₃ + hyperthermia according to Esophageal Carcinoma EC-1 Cell using colony forming test, calculate the SF, plot SF curve (Figure 2).

Simulated the cell SF curve by multitarget click mathematical model (Figure 2), through which and related equation, radioactivity parameters of (Table 2) are obtained, D₀ represents the average lethal dosage of cells, Dq represents quasi-field dosage, which indicates the repair ability of cells to sublethal injury. The results show that SF₂ is declined, the Dq is decreases, survival curves shoulder is decreased, the value of radiosensitivity is 1.258, 1.059, 1.724 based on D₀, and the value of radiosensitivity is 3.474, 1.917, 11. The value of D₀, Dq, N are decreased, the ratio of Dq is increased significantly, which indicates that As₂O₃ + hyperthermia have radiosensitivity effect. The Conjunction with hyperthermia can enhance the radiosensitivity effect.

FCM Analyse Cell Cycle and Apoptosis

In order to study the radiosensitivity mechanism of the As₂O₃ + hyperthermia, test apoptosis and the change

Table 4. Test Results for Cell Cycle and Apoptosis to Different Groups (% ,`c ±S)

Group	G ₀ /G ₁ phase	S phase	G ₂ /M phase
O Group	54.1±1.47	35.8±1.71	10.1±1.08
H Group	50.3±1.74*	32.2±2.40*	17.5±1.95*
A Group	31.4±1.93	44.2±1.65	24.5±1.11
A+H Group	31.3±1.31	42.0±1.77*	26.6±0.85
R Group	50.8±0.79	32.1±0.53*	17.1±1.65
H+R Group	45.3±0.95	27.0±0.60*	27.7±0.95*
A+R Group	37.2±2.00	28.7±0.55	34.1±3.42
A+H+R Group	15.0±1.45*	26.4±1.15*	58.6±2.84*

Note: *represents that P value <0.05 compared to other groups

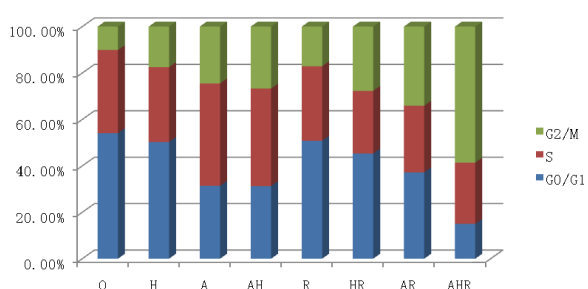


Figure 4. Ratio Histograms for Each Phase Cell in Cell Cycle for Different Treatment Groups

of cell cycle distribution after different treatment using FCM. For the change of apoptosis after 48 h of different treatment (Table 3, Figure 3). For the proportion in all cell cycle and the apoptosis ratio (Table 4, Figure 4).

We can see from Table 3 that As₂O₃ and hyperthermia can respectively increase apoptosis induced by radioactive rays (3.36 ± 0.011 V.S 1.13 ± 0.128, P<0.05; 2.7 ± 0.170 V.S 1.13 ± 0.128, P<0.05), and the combination treatment can make the apoptosis ratio up to the highest level (3.52 ± 0.147 V.S 1.13 ± 0.128, P<0.05). This indicates that the combination can further increase the apoptosis induced by radioactive rays.

Compared to O group, H group and A group can increase the ratio of G₂/M phase in all cell cycle (17.5 ± 1.95 V.S 10.1 ± 1.08, P<0.05; 24.5 ± 1.11 V.S 10.1 ± 1.08, P<0.05), the combination can make the ratio of G₂/M phase up to the highest level (26.6 ± 0.85 V.S 10.1 ± 1.08, P<0.05), the ratio of G₂/M phase is increased in R group (17.1 ± 1.65 V.S 10.1 ± 1.08, P<0.05).

Compared to R group, the ratio of G₂/M phase is increased in H+R group and A+R group (27.7 ± 1.46 V.S 17.1 ± 1.65, P<0.01; 34.1 ± 3.42 V.S 17.1 ± 1.65, P<0.01), and the ratio of S phase is decreased (27.0 ± 0.60 V.S 32.1 ± 0.53 ± P <0.05; 28.7 ± 0.55 V.S 32.1 ± 0.53, P<0.05). The ratio of G₂/M phase up to the highest level in A+H+R group (58.6 ± 2.84 V.S 17.1 ± 1.65, P<0.001), and the ratio is increased compared to H+R group and A+R group, the ratio of S phase is decreased to the least level (26.4 ± 1.15 V.S 32.1 ± 0.53, P=0.01). But the ratio of G₀/G₁ is decreased in H+R group and A+R group (45.3 ± 0.95 V.S 50.8 ± 0.79, P<0.01; 37.2 ± 2.00 V.S 50.8 ± 0.79, P<0.01), it is decreased to the least level in A+H+R group, P value is less than 0.001 (Table 4, Figure 4).

The results show that As₂O₃ and hyperthermia can inhibit the cells at G₂/M phase in which the cells are sensitive to radiotherapy, and the conjunction with radiotherapy can decrease the ratio of S phase and G₀/G₁

phase in which the cells are insensitive to radiotherapy.

Discussion

In this study, simulating comparison for irradiation-survival curve of 4 groups of human esophageal carcinoma EC-1 cells using multitarget click mathematical model formula reveals that the D₀ value, Dq value and N value of cells are decreased in R group with the treatment of As₂O₃ and hyperthermia, As₂O₃ can enhance the radiosensitivity effect to human esophageal carcinoma EC-1 cells [SER (D₀) is 1.285, SER (Dq) is 3.474], hyperthermia can also enhance the radiosensitivity effect to human esophageal carcinoma EC-1 cells [SER (D₀) is 1.059, SER (Dq) is 1.917], and As₂O₃ in conjunction with hyperthermia can further enhance the radiosensitivity effect to human esophageal carcinoma EC-1 cells [SER (D₀) is 1.724, SER (Dq) is 11]. All the above results indicate that after treatment of As₂O₃ and hyperthermia, the average lethal dosage of R group is decreased compared to the R group without treatment, the shoulder is decreased obviously, and the repair ability of cell sublethal injury is decreased obviously. The radiosensitivity effect of As₂O₃ in conjunction with hyperthermia is increased obviously to human esophageal carcinoma EC-1 cells, the average lethal dosage is decreased with irradiation, the decrease of shoulder is more significant, and the repair ability of cell sublethal injury is decreased obviously.

Further study has been made to investigate the radiosensitivity mechanism of As₂O₃ in conjunction with hyperthermia. The results from testing cell cycle and apoptosis by FCM indicate that As₂O₃ mainly inhibits the cells at G₂/M phase, decrease the G₀/G₁ phase ratio. That conforms to the study in multiple cancer cell line such as lung cancer, ovarian cancer and breast cancer by Ling et al. (2002) and the study in gastric cancer BGC-823 cells by Li et al. (2008). Hyperthermia inhibits also cells at G₂/M phase, decrease the S phase ratio. As₂O₃ or hyperthermia in conjunction with radiotherapy can respectively increase the ratio of G₂/M phase in which the cells is sensitive to irradiation, decrease the ratio of S phase in which the cells is insensitive to irradiation, so the radiosensitivity can be increased. As₂O₃ and hyperthermia in conjunction with radiotherapy can inhibit cells at G₂/M phase in which the cells is sensitive to irradiation, decrease the ratio of S phase in which the cells is insensitive to irradiation at a modest rate whose lowest degree is 26.4%. The possible reason is that the expression of cell cycle inhibition gene p57 is increased and cell cycle promotion gene cyclinB is obviously decreased after As₂O₃ in conjunction with hyperthermia. Both As₂O₃ and hyperthermia can increase apoptosis induced by radioactive rays, and As₂O₃ in conjunction with hyperthermia can further increase that in theory. But the highest apoptosis ratio for this study is only 3.52%, far below 48.53% which is reported by Liu et al. (2007), and similar with the apoptosis ratio of K562 reported by Chen et al. (2003).

In conclusion, this study demonstrates that As₂O₃ and hyperthermia have radiosensitivity effect to human esophageal carcinoma EC-1 cells. Effecting the cell cycle may be the main mechanism. Secondly, the killing effect

of radioactive rays can be enhanced by inducing apoptosis.

References

- Chen X, Ma S, Mou H, et al (2008). The synergistic killing effect of hyperthermia combined with chemotherapy to lung cancer drug resistance cell A549/DDP. *J Zhonghua Physical Medicine Recovery*, **30**, 88-91
- Chen Z, Ohnishi K, You Y, et al (2003). Mechanism of G2/M cycle arrest induced by arsenic trioxide in chronic myelogenous leukemia cells. *Acta Universitatis Medicinae Tangji*, **36**, 610-2
- Cui Y, Jiao M, Wang G, et al (2008). Therapeutic effect and molecular mechanisms of hyperthermia on S180 tumor cell line. *J Harbin Med Univers*, **42**, 122-5
- Guo H, Wu R, Chi F, et al (2007). Radiation enhancement of arsenic trioxide in human cervical squamous carcinoma cell line (Hela). *J Practical Oncol*, **21**, 21-2
- Guo K, Liu Y, Li Z (2011). Effect of the combination of three dimensional conformal radiotherapy and radio frequency hyperthermia in the treatment of upper esophageal carcinoma. *Practical J Cancer*, **26**, 67-77
- Li L, Zhang J, Liu Y, et al (2008). The effect of arsenic trioxide (As_2O_3) on proliferation and cell cycle in gastric cancer cell line BGC-823. *J Oncol*, **14**, 190-2
- Liang K (2002). Advance in tumor molecular biology and radiation biology research. see: Yin Weibo. Radiation Oncology. 3rd Edition. Beijing medical university and China xie-he medical university press association, 430-2
- Ling YH, Jmng JD, Holland JF, et al (2002). Arsenic trioxide produces polymerization of microtubules and mitotic arrest before apoptosis in human tumor cell lines. *Mol Pharmacol*, **62**, 529-38
- Liu Y, Niu J, Zhang W, et al (2005). The experimental study of the effects of radiotherapy combined with hyperthermia on the hela cells of cervical carcinoma in laboratory. *J Capital Univers Med Sci*, **26**, 593-6
- Nie L, Zhang Y, Li P, et al (2005). Radiosensitization of arsenic trioxide on malignant lymphoma cell lines. *Chinese J Radiation Med Protection*, **25**, 43-5
- Ning S, Knox SJ (2006). Optimization of combination therapy of arsenic trioxide and fractionated radiotherapy for malignant glioma. *Int J Radiat Oncol Biol Phys*, **65**, 493-8
- Sun X, Wang R (2008). The effect of hyperthermia and radiotherapy combined with hyperthermia to cell CNE-2 apoptosis. *J Guangxi Med Univers*, **25**, 194-6
- Wang W, Yang W, Li Y, et al (2006). Radiation enhancement on fibrosarcoma cells by arsenic trioxide. *Chinese J Radiation Oncol*, **15**, 448-51
- Xie L, Li D, Lin Y, et al (2004). Arsenic trioxide enhances radiosensitivity of nasopharyngeal carcinoma in vitro. *Chinese J Radiation Med Protection*, **24**, 240-2
- Ye C (2005). Efficacy evaluation for the treatment of radiotherapy combined with hyperthermia in 50 case with esophageal carcinoma. *Chengdu Med J*, **31**, 91
- Zhang D, Wang B, Hu L, et al (2003). Radiation enhancement and induced apoptosis in ovarian cancer cells by arsenic trioxide. *Chinese J Radiation Oncol*, **12**, 46-9
- Zhan H, Liang H, Sun H, et al (2008). Changes in E-cadherin and β -catenin expressions after hyperthermia, chemotherapy and radiotherapy in human colon cancer transplanted in nude mice. *Chinese J Cancer Prev Treat*, **15**, 991-5